



2022 – 2023 Safety and Fire Report



Greenville Tech Police
Serving Our Community
for 15 Years



Empowering individuals. Changing lives. Reshaping Communities.



ReportIt

Citizen Property Inventory System

Powered by LeadsOnline



Register your property at reportit.leadsonline.com

Safe. Secure. Free.

Knowing what you own – the difference between recovering and not recovering stolen property.



General Public

Keep a secure, online record of valuable property, accessible from anywhere. All for free.



Law Enforcement

Help law enforcement recover stolen property faster than before.



Corporate Accounts

Inventory tools, equipment, supplies, etc. Call 1-800-311-2656 for more about corporate accounts.

ReportIt is not a law enforcement function and does not automatically search for property that may have been lost or stolen. Please report any criminal activity to law enforcement immediately.

reportit.leadsonline.com

Contents

A message from Dr. Keith Miller 5

Introduction from the Chief of Police 6

Contacts 7

Section 1 Safety Report..... 8

Alcohol and Substance Abuse..... 9

Annual Security Reports [ASR] 11

 Statistics Explained 11

 Crime and Activity Logs 11

 100 Barton Campus 16

 160 Gene Haas Center for Manufacturing Innovation [CMI] 20

 200 Brashier Campus..... 22

 300 Benson Campus 24

 400 Northwest Campus 26

 550 Truist Culinary and Hospitality Innovation Center [CHI] 28

 700 South Carolina Army National Guard Readiness Center 30

 800 McKinney Regional Automotive Technology Center 32

Building Access..... 34

Building Evacuations 35

Counseling and Support Services..... 36

Crime Prevention and Reporting 39

Emergency Phones..... 43

Emergency Messaging 44

Emergency Procedures 45

Emergency Preparedness and Incident Committee (EPIC)..... 46

Fire Safety 47

Inclement Weather 48

Medical Emergencies 50

Missing Student Notification 51

Police..... 52

Public Safety/Environmental Health and Safety..... 53

Sex Offenders..... 54

Sexual Violence and Misconduct	56
Programs and Information Regarding Sexual Violence	56
Assault Information for Women.....	58
Male Sexual Assault.....	63
Title IX	66
Victim’s Rights.....	68
Weapons on Campus	70
Section 2 Fire Safety Report.....	72
Campus Fire Safety Annual Compliance Report	73
Contact Information.....	75
Living Safely in Your Apartment.....	76
Statistics and Reports of On-Campus Student Housing Fires	77
Glossary of Terms	78
Photo Credits	79

*A publication of the **Greenville Technical College Police Department**.
Produced in cooperation and with input from **Greenville Technical College***

A message from Dr. Keith Miller

At Greenville Technical College, we take safety very seriously, knowing that a secure environment allows students to concentrate on learning and professors to focus on teaching. We use a team approach to minimize crime, an effort that involves each person on campus.

Uniformed police officers take the lead in responding to incidents and deterring criminal activity with help from public safety officers. This team responds quickly when calls and emergencies take place. Employees, students, and visitors also play a critical role in safety, supporting officers by noticing suspicious behavior and reporting concerns.

A warning system is in place, and communication tools include emails and text alerts. Each facility has a trained building marshal and floor captains who carry out emergency notifications and procedures when required. Resources also include emergency telephones on the Barton Campus.

An Emergency Preparedness and Incident Committee (EPIC) meets monthly, ready to mobilize at a moment's notice. The team utilizes drills and training to maintain readiness. All employees are required to complete annual safety training in an effort to keep awareness strong and skills up to date.

While crime can't be eliminated, preparedness and awareness allow us to reduce it to the maximum extent possible. Thank you for being part of the GTC community, coming together to maintain secure classrooms and campuses.

Sincerely,



Keith Miller, PhD
President, Greenville Technical College



[Back to Table of Contents](#)

Introduction from the Chief of Police



The Greenville Technical College Police Department is pleased to present the 2022-2023 Safety and Fire Report in accordance with the Jeanne Clery Act. The mission of our Police Department is to provide a safe, secure, and inviting environment for our students, faculty, staff, and visitors at each of our five campuses and other GTC properties. Our Police Department consists of Certified Police Officers (Commissioned by the State Law Enforcement Division) and civilian Public Safety Officers who are on duty twenty-four hours a day with the committed purpose to ensure the safety of our college community.

Our relationship and collaboration with each division of our college, our communities and our law enforcement and judicial partners are imperative in helping provide optimal services to those we serve daily.

We continually evaluate our opportunities and challenges to ensure the accomplishment of our mission and the delivery of Service Excellence to those we serve. Our professional development training is a valuable component that prepares us to foresee emerging trends in our field and respond expediently. Additionally, several college faculty and staff members and I have received ATIXA Title IX Advanced Investigator Training and serve on the Title IX investigation staff.

This publication will provide you comprehensive information in regards to crime and fire information from calendar years 2019 through 2021. This information is available in printed and digital form for public dissemination.

In an emergency, dial 9-1-1. Greenville Technical College Police Officers are dispatched by Greenville City Police Department E-911 Emergency Dispatch. Our non-emergency contact number is (864) 250-8001. You may reach any of our personnel via email at police@gvltec.edu. Please assist us in our continuing efforts to ensure the safety of our college community.

Sincerely,

A handwritten signature in black ink that reads "Terence M. Brooks". The signature is fluid and cursive.

Terence M. Brooks, FBI NA Session 203
Chief of Police, Greenville Technical College
Barton Campus Engineering Technologies Building
ET/102-124 [Suite 123-124]
(864) 250-8211 [x8211]
Terence.Brooks@gvltec.edu



[Back to Table of Contents](#)

Contacts

Emergency

Dial 9-1-1 – GTC Police, Fire, and EMS

GTC Police Non-Emergency Contacts

Police Headquarters: Barton Campus – Willie B. McMahan Engineering Technologies Building ET/103-124
Chief Terence Brooks (ET/103-124) – (864) 250-8211 (x8211); Terence.Brooks@gvltec.edu
Sergeant Brad Stansell (ET/103-124D) – (864) 236-6426 (x6426); Brad.Stansell@gvltec.edu
Sergeant Scott Weaver (ET/103-124C) – (864) 236-6427 (x6427); Scott.Weaver@gvltec.edu
Records (ET/103-124B) – Joel Foster (864) 250-8001 [option 3] (x8001); Joel.Foster@gvltec.edu
ID Office (ET/103-123) – (864) 250-8001 [option 2] (x8001)

Police Non-Emergency Dispatch: Barton Campus – (FR/107-117) – (864) 250-8001 [option 1] (x8001)
Forensics/P&E – Officer Jeremy Sutton (FR/107-118) – (864) 250-8001 [option 4] (x8001);
Jeremy.Sutton@gvltec.edu

Environmental Health and Safety/Department of Public Safety

John Moore, Environmental Health and Safety Manager
Barton Campus – J. Verne Smith Institutional Effectiveness/Logistics Building (IEL/108-110) (864) 250-8205
(x8205); John.Moore@gvltec.edu

Brashier Campus Public Safety Officer: George E. Bomar Center (BR/201 – 1st Floor Rotunda)
Desk (864) 250-4135 (x4135); Cell (864) 419-9903

Benson Campus Public Safety Officer: Jim and Evelyn Benson Center (BE/301-128A)
Office (864) 250-3027 (x3027); Cell (864) 419-9923

Northwest Campus Public Safety Officer: Northwest (NW/402 – Main Entrance)
Cell (864) 419-9968

Title IX

Title IX Coordinator

Dr. Travis P. Gleaton
Associate Dean of Students
Barton Campus – Student Center (SC/105-216)
Office (864) 236-6523 (x6523); Travis.Gleaton@gvltec.edu

Interim Title IX Deputy Coordinator

Barbara Wilson
Manager of Benefits & Time Management
Barton Campus – Robert C. Crawford Administration Building (AD/123- 120)
Office (864) 236-6655 (x6655); Barbara.Wilson@gvltec.edu

[Back to Table of Contents](#)



Section 1 Safety Report

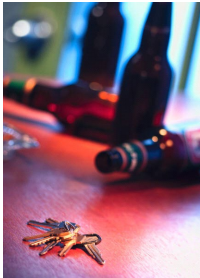
To comply with the 1998 **Jeanne Clery Disclosure of Campus Security Policy and Campus Crime Statistics Act** (20 USC § 1092(f)), commonly referred to as the "Clery Act," Greenville Technical College offers this report, commonly called the "Clery Report." Portions also are provided to comply with requirements of **The Campus Sexual Violence Elimination (SaVE) Act**, a part of the **Violence Against Women Reauthorization Act of 2013 (VAWA)**, passed as a complement to the Title IX Guidance by the U.S. Department of Education's Office for Civil Rights. This report, updated annually, is available to all college students, faculty, staff, and interested individuals via web distribution. If requested, Greenville Technical College will provide a printed copy of this report to any current or prospective student, faculty, staff, and interested individuals. Contact the GTC Police Department for more information.

[Back to Table of Contents](#)

Alcohol and Substance Abuse

Excerpt from the [Academic Catalog 2022-2023 Edition "Alcohol and Drug Policy"](https://catalog.gvitec.edu/student-handbook/campus-safety-security/)
(<https://catalog.gvitec.edu/student-handbook/campus-safety-security/>)

The sale, possession or consumption of alcoholic beverages and/or narcotics, hallucinogens, stimulants and marijuana are specifically prohibited on all campus properties. Violations will be reported to the GTC Police Department for prosecution. Behavior resulting from the use of alcohol or other drugs that poses danger to the student or others will not be tolerated and could result in disciplinary sanctions.



No alcoholic beverages are to be served or consumed at any on-campus or off-campus college function. This includes club, departmental and class activities such as meetings, field trips, picnics, parties, and similar activities. No GTC funds will be authorized for the purpose of purchasing alcoholic beverages.

Individuals who experience alcohol/drug dependency are encouraged to seek assistance through the Counseling Department, the z Center, or the South Carolina Department of Vocational Rehabilitation.

The college complies with Section 1213 of the Higher Education Act of 1965, as amended. As part of the compliance procedure, the college provides each student and employee with a copy of the "Alcohol and Other Drug Use" policy as adopted by the State Board for Technical and Comprehensive Education. This policy contains information concerning the following.

- The technical college system's prohibition of the unlawful manufacture, distribution, possession or use of narcotics, drugs, other controlled substances or alcohol at the workplace and in the educational setting.
- The effects and health risks associated with alcohol consumption.
- The effects and health risks associated with the consumption of controlled substances.
- South Carolina laws relating to alcohol and other drugs.
- Federal penalties for the possession of controlled substances.
- Local (City of Greenville or Greenville County) ordinances and penalties relating to drugs and contraband.
- Assistance programs are available to students and employees.

A copy of the Alcohol and Other Drug Use policy is available in the office of the dean of students.

GTC Center for Collegiate Recovery

The Center for Collegiate Recovery at GTC delivers student-driven services and recovery-oriented community development for achieving collegiate health and academic excellence. Our daily vision for students practicing or seeking recovery is to experience continuous support, graduate from college, and achieve success in life.

Nate Tate

Collegiate Recovery Program Director
Commons/103-218
(864) 250-8774

The Center for Collegiate Recovery is committed to ensuring that students practicing or seeking recovery graduate from Greenville Technical College.

What We Do

The guiding priorities of the Center for Collegiate Recovery are to recruit, retain, and graduate GTC students and families by promoting Recovery Engagement and Access for Collegiate Health and Educational Success (REACHES). The Center for Collegiate Recovery Program provides students with recovery-oriented staff, safe social and study space, student-driven activities, academic support, and recovery services.

Connecting with the Center for Collegiate Recovery reinforces each person's unique recovery journey by establishing and strengthening confidence and competence, shared knowledge, lived experiences, and applied skills to achieve success in careers, families, and communities. Being a part of the Collegiate Recovery Community at GTC provides the opportunity to have fun, work hard, develop a reliable community network, give back, and build positive relationships with yourself and your peers.



For more information, visit [The Center for Collegiate Recovery](https://www.gvltec.edu/student_resources/student_support/counseling/collegiate-recovery.html) web page

(https://www.gvltec.edu/student_resources/student_support/counseling/collegiate-recovery.html).

Special Events: Use of Facilities Policy, Procedure [Administrative Policy 4-01.1, II. E. 4.](https://www.gvltec.edu/about_greenilletech/administration_governance/admin_policies/4-01.1-Use-of-Facilities-Procedures.html)

(https://www.gvltec.edu/about_greenilletech/administration_governance/admin_policies/4-01.1-Use-of-Facilities-Procedures.html)

“Alcohol is strictly prohibited on campus unless pre-approved by the College President. The Application for Service of Alcoholic Beverages on Campus may be requested through a separate application process.”

Resources

[Catalog and Student Handbook](https://www.gvltec.edu/catalog/) (<https://www.gvltec.edu/catalog/>)

[Center for Collegiate Recovery](https://www.gvltec.edu/student_resources/student_support/counseling/collegiate-recovery.html) – (864) 250-8774 [x8774]

(https://www.gvltec.edu/student_resources/student_support/counseling/collegiate-recovery.html)

[Greenville Tech Counseling Services](https://www.gvltec.edu/counseling/) (<https://www.gvltec.edu/counseling/>)

[The Phoenix Center](http://www.phoenixcenter.org) – (864) 467-3790 (<http://www.phoenixcenter.org>)

[South Carolina Department of Vocational Rehabilitation](http://www.scvrd.net) – (800) 832-7526 (<http://www.scvrd.net>)

- Greenville – (864) 297-3066
- Anderson – (864) 224-6391
- Clinton – (864) 984-6563; Toll-Free (866) 443-0103
- Gaffney – (864) 489-3306; Toll-Free (866) 451-1481
- Greenwood – (864) 229-5827; Toll-Free (866) 443-0162
- Jonesville – (864) 475-5000
- Seneca – (864) 882-6669; Toll-Free (866) 313-0082
- Spartanburg – (864) 585-3693; Toll-Free – (866) 451-1480

[Back to Table of Contents](#)

Annual Security Reports [ASR]

Statistics Explained

We are required to disclose specific crime statistics in compliance with the 1998 **Jeanne Clery Disclosure of Campus Security Policy and Campus Crime Statistics Act** (20 USC § 1092(f)), commonly referred to as the “Clery Act.” Additionally, **The Campus Sexual Violence Elimination (SaVE) Act**, part of the **Violence Against Women Reauthorization Act of 2013 (VAWA)**, adds additional reporting requirements. Following this summary, eight (8) Annual Security Reports appear:

- **Barton Campus (100)**, Greenville
- **Gene Haas Center for Manufacturing Innovation [CMI] (160)**, Greenville
- **Brashier Campus (200)**, Simpsonville
- **Benson Campus (300)**, Taylors (Greer area)
- **Northwest Campus (400)**, Greenville (Berea area)
- **Truist Culinary and Hospitality Innovation Center [CHI] (550)**, Greenville (Poe West)
- **South Carolina Army National Guard Readiness Center at SCTAC (700)**, Greenville
- **McKinney Regional Automotive Technology Center [RATC] (800)**, Greenville

The Barton Campus report contains statistics for the **Admissions and Registration Center (603) at McAlister Square (600)**. All Greenville Technical College offices and functions closed as of September 13, 2021. Greenville Technical College now has no academic functions at McAlister Square. This location will not appear in the 2023-2024 report. Greenville Technical College and Greenville Tech Foundation currently own the mall parcels and most of the parking lots at this facility. Greenville Tech Police maintain police jurisdiction over the facility at this time.

This report also contains statistics for **Campus Pointe at Greenville Technical College**, a student housing facility adjacent to Greenville Technical College and formerly owned by the Greenville Tech Foundation, Inc. The Foundation sold this facility to Grace Church on May 6, 2022; the new name is **Front Porch Housing**, and it is now a two-year supportive housing program designed to help individuals and families in crisis. A one-year agreement between Front Porch Housing and Greenville Technical College allows Building D to remain Student Housing through Spring Semester 2023, with an extension possible by agreement of both parties. As a result, Front Porch Housing will remain in this report through the 2023-2024 edition.

The *Clery Act* requires educational institutions, at minimum, to maintain 2 types of logs of reportable crimes:

- 60 Day Log
- Crime Logs for the 3 reporting years

Greenville Technical College maintains monthly logs on the GTC website dating back to 2018, which exceeds the requirement. The GTC Police Records Division maintains these logs at 506 South Pleasantburg Drive, ET/103-124B, Greenville, SC 29607.

Crime and Activity Logs

Logs are available in several ways:

- On the [GTC website](https://www.gvltec.edu/about_greenvilletech/police/crime-logs.html) (https://www.gvltec.edu/about_greenvilletech/police/crime-logs.html)
- From the GTC Police Records Division upon request during business hours. Business hours are Monday through Thursday, 9 a.m. – 4 p.m., Friday 9 a.m. – 1 p.m., holidays and campus closings excluded.
- Request a copy of the log in PDF format by email; or a print version by fax, mail, or in person. Contact the GTC Police Records Division at (864) 250-8001 [option 3] (x8001) or visit GTC Police Headquarters, Barton Campus Engineering Technologies Building (ET/103-Suite 123-124) for assistance. The mailing address is Greenville Technical College, Police Records Division, PO Box 5616, MS 1032. Greenville, SC 29606-5616.

Crime logs are available for public inspection at the GTC Police Records Division on the Barton Campus. Please request these logs in writing from the GTC Police on the Barton Campus. Allow up to 48 business hours for public inspection of these logs.

The Clery Act requires institutions to disclose crime statistics for the prior three (3) full calendar years for specific categories of crimes and offenses. The Clery Report includes statistics for the following types of crimes and offenses that appear in the Clery Report as required:

1. Specified Categories of Offenses

- Murder and Non-Negligent Manslaughter
- Negligent Manslaughter
- Sex Offenses (Forcible):
 - Rape
 - Fondling
- Sex Offenses (Non-forcible)
 - Incest
 - Statutory rape
- Robbery
- Aggravated Assault
- Burglary
- Motor Vehicle Theft
- Arson

2. Hate Crimes—Reportable Hate Crimes include all of the above categories plus:

- Simple Assault
- Larceny – theft
- Intimidation
- Destruction/damage/vandalism of property

Categories of bias as amended in 2015 are:

- Race
- Religion
- Sexual Orientation
- Gender
- Gender Identity
- Disability
- Ethnicity
- National Origin

3. Arrests and Referrals for Disciplinary Action for:

- Illegal weapons possession
- Violation of drug laws
- Violation of liquor laws

4. VAWA Offenses

- Domestic violence
- Dating Violence
- Stalking

5. Total crimes determined to be “unfounded” in any of the categories listed above

Glossary of Terms Used in the Annual Security Reports

Aggravated Assault: An unlawful attack by one person upon another to inflict severe or aggravated bodily injury. This type of assault usually includes the use of a weapon or means likely to produce death or great bodily harm. This type does not include Simple Assaults. When a gun, knife, or other weapon is involved, the crime will be classified as Aggravated Assault, even if there is no injury.

Arson: The willful or malicious burning or attempt to burn, with or without intent to defraud, a dwelling house, public building, motor vehicle or aircraft, or personal property of another kind.

Burglary: The unlawful entry of a structure to commit a felony or theft. For reporting purposes, this definition includes unlawful entry with intent to commit a larceny or a felony; breaking and entering with intent to commit a larceny; housebreaking; safecracking; and all attempts to commit any of the crimes mentioned above.

Dating violence: Means violence by a person who has been in a romantic or intimate relationship with the victim. Whether there was such a relationship will be gauged by its length, type, and frequency of interaction.

Domestic violence: Includes asserted violent misdemeanor and felony offenses committed by the victim's current or former spouse, current or former cohabitant, person similarly situated under domestic or family violence law, or anyone else protected under domestic or family violence law.

Drug Abuse Violations: Violations of state and local laws relating to the unlawful possession, sale, use, growing, manufacturing, and the making of narcotic drugs. The relevant substances include opium or cocaine and their derivatives, marijuana, synthetic narcotics, and dangerous non-narcotic drugs.

Hate Crimes: The crimes noted on [page 12](#) under **Hate Crimes**, along with Larceny/Theft, Simple Assault, Intimidation, and damage or vandalism of victim's property or other crimes involving bodily injury in which the victim's actual or perceived race, religion, sexual orientation, gender, gender identity, disability, ethnicity, or national origin is a factor in the Clery Report according to the category of prejudice.

Intimidation: To unlawfully place another person in reasonable fear of bodily harm through the use of threatening words and/or other conduct, but without displaying a weapon or subjecting the victim to actual physical attack.

Larceny: The unlawful taking, carrying, leading, or riding away of property from the possession or constructive possession of another.

Liquor Law Violations: The violation of laws or ordinances prohibiting the manufacture, sale, transporting, furnishing, possessing of intoxicating liquor, maintaining unlawful drinking places, bootlegging, operating a still, furnishing liquor to minor or intemperate person, using a vehicle for illegal transportation of liquor, drinking on a train or public conveyance, and all attempts to commit any of those above. This term does not include drunkenness or driving under the influence.

Motor Vehicle Theft: The theft or attempted theft of a motor vehicle. This term includes all cases where automobiles are taken by persons not having lawful access, even though the vehicles are later abandoned - including joyriding.

Murder/Non-Negligent Manslaughter: The willful (non-negligent) killing of one human being by another. NOTE: This category excludes deaths caused by negligence, attempts to kill, assaults to kill, suicides, accidental deaths, and justifiable homicides.

Negligent Manslaughter: The killing of another person through gross negligence.

Non-campus Buildings or Property: Any building or property owned or controlled by the college, used to support the college's educational purposes, is frequently used by students, and is not with the same reasonably contiguous geographic area of the college.

On-Campus or College Property: 1) Buildings or properties owned or controlled by the college within the same reasonably contiguous geographic area and used by the college in direct support of, or in a manner related to, the college's education purposes; i.e., Any classroom or other building on campus. 2) Buildings or properties within or reasonably contiguous to the college, owned by the college but controlled by another person, frequently used by students, and support institutional purposes.

Public Property: All public property, including thoroughfares, streets, sidewalks, alleys, and parking facilities, is within the campus or immediately adjacent to and accessible from the campus.

Robbery: Taking or attempting to take anything from the care, custody, or control of a person or persons by force or threat of force, or violence and/or by putting the victim in fear.

Sex Offenses – Dating Violence, Domestic Violence, and Stalking:

- **Dating violence** – violence committed by a person:
 - (A) who is or has been in a social relationship of a romantic or intimate nature with the victim; and
 - (B) where the existence of such a relationship shall be determined based on a consideration of the following factors:
 - i. The length of the relationship.
 - ii. The type of relationship.
 - iii. The frequency of interaction between the persons involved in the relationship.
- **Domestic violence** – includes felony or misdemeanor crimes of violence committed by:
 - (A) a current or former spouse of the victim
 - (B) a person whom the victim shares a child in common
 - (C) a person who is cohabitating with or has cohabitated with the victim as a spouse
 - (D) a person similarly situated to a spouse of the victim under the domestic or family violence laws of the jurisdiction receiving grant monies
 - (E) any other person against an adult or youth victim who is protected from that person's acts under the domestic or family violence laws of the jurisdiction
- **Stalking** – engaging in a course of conduct directed at a specific person that would cause a reasonable person to:
 - (A) fear for his or her safety or the safety of others; or
 - (B) suffer substantial emotional distress

Sex Offenses-Forcible: Any sexual act directed against another person, forcibly and/or against that person's will; or not forcibly or against the person's will where the victim is incapable of giving consent.

- **Forcible Rape:** The carnal knowledge of a person, forcibly and/or against the person's will; or not forcibly or against the person's will where the victim is incapable of giving consent because of his/her temporary or permanent mental or physical incapacity (or because of his/her youth).
 - **Forcible Sodomy:** Oral or anal sexual intercourse with another person, forcibly and/or against that person's will; or not forcibly against the person's will where the victim is incapable of giving consent because of his/her youth or because of his/her temporary or permanent mental or physical incapacity.

- **Sexual Assault With An Object:** The use of an object or instrument to unlawfully penetrate, however slightly, the genital or anal opening of the body of another person, forcibly and/or against that person's will; or not forcibly or against the person's will where the victim is incapable of giving consent because of his/her youth or because of his/her temporary or permanent mental or physical incapacity.
- **Forcible Fondling:** The touching of the private body parts of another person for sexual gratification, forcibly and/or against that person's will; or, not forcibly or against the person's will where the victim is incapable of giving consent because of his/her youth or because of his/her temporary or permanent mental incapacity.

Sex Offenses-Non-forcible: Unlawful, non-forcible sexual intercourse.

- **Incest:** Non-forcible sexual intercourse between persons related to each other within the degrees wherein marriage is prohibited by law.
- **Statutory Rape:** Non-forcible sexual intercourse with a person who is under the statutory age of consent.

Simple Assault: An unlawful physical attack by one person upon another where neither the offender displays a weapon nor the victim suffers obvious severe or aggravated bodily injury involving apparent broken bones, loss of teeth, possible internal injury, severe laceration, or loss of consciousness.

Stalking: A course of conduct directed at a specific person that would cause a reasonable person to fear for her, his, or others' safety or to suffer substantial emotional distress.

Unfounded: If a reported crime is investigated by law enforcement authorities and found to be false or baseless, the crime is "unfounded." Only sworn, commissioned law enforcement personnel may determine that a crime is unfounded.

Vandalism: To willfully or maliciously destroy, injure, disfigure, or deface any public or private property, real or personal, without the consent of the owner or person having custody or control by cutting, tearing, breaking, marking, painting, drawing, covering with filth, or any other such means as may be specified by local law.

Weapon Law Violations: The violation of laws or ordinances dealing with weapon offenses, regulatory in nature, such as manufacture, sale, or possession of deadly weapons; carrying deadly weapons, concealed or openly; furnishing deadly weapons to minors; aliens possessing deadly weapons; all attempts to commit any of those as mentioned above.)

Resources

[The Campus Safety and Security Data Analysis Cutting Tool](https://ope.ed.gov/campussafety/) (https://ope.ed.gov/campussafety/)
[United States Department of Justice's Office on Violence Against Women \(OVW\)](https://www.justice.gov/ovw/)
 (https://www.justice.gov/ovw/)

[Back to Table of Contents](#)

100 Barton Campus Annual Crime Report 2022-2023

506 South Pleasantburg Drive
Greenville, SC 29607



- This campus **provides** Student Housing adjacent to GTC through an agreement with Grace Church
Front Porch Housing – Building D
Formerly: Campus Pointe at Greenville Technical College
1433 Cleveland Street
Greenville, SC 29607

This agreement will remain in effect through Spring Semester 2023, and, unless extended by arrangement, 2023-2024 will be the final reporting period for this facility

- This campus has received data from the local Police Agency [Greenville Police]
- This campus **had** one non-campus building, in which all GTC functions ceased on September 13, 2021. *This location will not appear in future reports:*
Admissions and Registration Center (603), *Located at* McAlister Square (600)
225 South Pleasantburg Drive
Greenville, SC 29607

Reportable Criminal Offenses Occurring on Barton Campus			
Criminal Offense	2019	2020	2021
a. Murder/Non-negligent manslaughter	0	0	0
b. Negligent manslaughter	0	0	0
c. Sex offenses – Forcible			
a. Rape	0	0	0
b. Fondling	0	1	1
d. Sex offenses – Non-forcible			
a. Incest	0	0	0
b. Statutory rape	0	0	0
e. Robbery	1	0	0
f. Aggravated assault	1	0	0
g. Burglary	0	8	0
h. Motor vehicle theft	0	0	0
i. Arson [Only fires that are investigated by law enforcement and determined to be arson]	0	0	0

Reportable Criminal Offenses Occurring in Student Housing [ALSO REPORTED IN CAMPUS TOTALS]			
Criminal Offense	2019	2020	2021
a. Murder/Non-negligent manslaughter	0	0	0
b. Negligent manslaughter	0	0	0
c. Sex offenses – Forcible			
a. Rape	0	0	0
b. Fondling	0	1	1
d. Sex offenses – Non-forcible			
a. Incest	0	0	0
b. Statutory rape	0	0	0
e. Robbery	1	0	0
f. Aggravated assault	1	0	0
g. Burglary	0	7	0
h. Motor vehicle theft	0	0	0
i. Arson [Only fires that are investigated by law enforcement and determined to be arson]	0	0	0

Reportable Criminal Offenses Occurring on Non-campus Properties [McAlister Square]			
Criminal Offense	2019	2020	2021
a. Murder/Non-negligent manslaughter	0	0	0
b. Negligent manslaughter	0	0	0
c. Sex offenses – Forcible			
a. Rape	0	0	0
b. Fondling	0	0	0
d. Sex offenses – Non-forcible			
a. Incest	0	0	0
b. Statutory rape	0	0	0
e. Robbery	0	0	0
f. Aggravated assault	0	1	0
g. Burglary	1	0	1
h. Motor vehicle theft	0	1	0
i. Arson [Only fires that are investigated by law enforcement and determined to be arson]	0	0	0

Reportable Criminal Offenses Occurring on Public Property [ADJACENT TO BARTON CAMPUS]			
Criminal Offense	2019	2020	2021
a. Murder/Non-negligent manslaughter	0	0	1
b. Negligent manslaughter	0	0	0
c. Sex offenses – Forcible			
a. Rape	0	0	0
b. Fondling	0	0	0
d. Sex offenses – Non-forcible			
a. Incest	0	0	0
b. Statutory rape	0	0	0
e. Robbery	0	0	0
f. Aggravated assault	0	2	3
g. Burglary	0	0	0
h. Motor vehicle theft	0	0	2
i. Arson [Only fires that are investigated by law enforcement and determined to be arson]	0	0	0

Hate Crimes

There were no reportable hate crimes for the reporting period [2019-2021].

VAWA Offenses Occurring on Barton Campus			
Crime	2019	2020	2021
a. Domestic violence	0	0	0
b. Dating violence	0	0	1
c. Stalking	0	0	0

VAWA Offenses Occurring in Student Housing [ALSO REPORTED IN CAMPUS TOTALS]			
Crime	2019	2020	2021
a. Domestic violence	0	0	0
b. Dating violence	0	0	1
c. Stalking	0	0	0

Barton Campus Annual Crime Report 2022-2023 – 2

VAWA Offenses Occurring on Non-campus Properties [McAlister Square]			
Crime	2019	2020	2021
a. Domestic violence	0	0	0
b. Dating violence	0	0	0
c. Stalking	0	0	0

VAWA Offenses Occurring on Public Property [ADJACENT TO BARTON CAMPUS]			
Crime	2019	2020	2021
a. Domestic violence	0	0	0
b. Dating violence	0	0	0
c. Stalking	0	0	0

Arrests on Barton Campus			
Crime	2019	2020	2021
a. Illegal weapons possession	6	3	0
b. Drug law violations	20	8	7
c. Liquor law violations	4	0	4

Arrests in Student Housing [ALSO REPORTED IN CAMPUS TOTALS]			
Crime	2019	2020	2021
a. Illegal weapons possession	2	1	0
b. Drug law violations	4	6	2
c. Liquor law violations	1	0	1

Arrests – Non-Campus Properties [McAlister Square]			
Crime	2019	2020	2021
a. Illegal weapons possession	0	0	0
b. Drug law violations	1	1	1
c. Liquor law violations	0	1	0

Arrests – Public Properties [ADJACENT TO BARTON CAMPUS]			
Crime	2019	2020	2021
a. Illegal weapons possession	0	0	3
b. Drug law violations	2	0	5
c. Liquor law violations	1	0	1

Disciplinary Actions on Barton Campus			
Crime	2019	2020	2021
a. Illegal weapons possession	0	0	0
b. Drug law violations	4	14	0
c. Liquor law violations	0	1	3

Barton Campus Annual Crime Report 2022-2023 – 3

Disciplinary Actions in Student Housing [ALSO REPORTED IN CAMPUS TOTALS]			
Crime	2019	2020	2021
a. Illegal weapons possession	0	0	0
b. Drug law violations	4	13	0
c. Liquor law violations	0	1	3

Disciplinary Actions – Non-Campus Properties [McAlister Square]			
Crime	2019	2020	2021
a. Illegal weapons possession	0	0	0
b. Drug law violations	0	0	0
c. Liquor law violations	0	0	0

Disciplinary Actions - Public Properties [ADJACENT TO BARTON CAMPUS]			
Crime	2019	2020	2021
a. Illegal weapons possession	0	0	0
b. Drug law violations	0	0	0
c. Liquor law violations	0	0	0

Unfounded Crimes on Barton Campus and ARC at McAlister Square			
	2019	2020	2021
Total unfounded crimes – reportable categories only	0	0	1

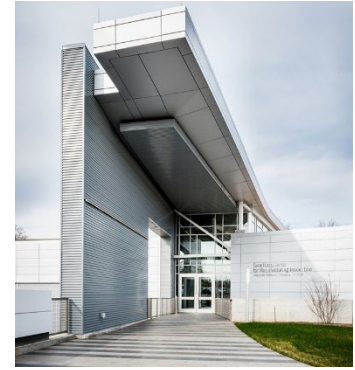
This campus has a Student Housing Agreement.

Front Porch Housing, located at 1433 Cleveland Street, is owned by **Grace Church**. The property was formerly known as **Campus Pointe at Greenville Technical College** and was owned by **Greenville Tech Foundation, Inc.**, on property previously owned by **Greenville Technical College**. The sale closed on May 6, 2022, and the church took ownership and control at that time. The church has an agreement with Greenville Technical College to offer a single building of the complex, Building D, as Student Housing through Spring Semester 2023, with the option to extend as dedicated student housing by agreement of both parties. The facility is no longer under the jurisdiction of the GTC Police Department; instead, it is now under the jurisdiction of the Greenville Police Department.

Data and statistics for fires in the complex are included in the **Fire Safety Report**, Section 2 of this booklet, starting on [page 72](#).

160 Gene Haas Center for Manufacturing Innovation [CMI] Annual Crime Report 2022-2023

575 Millennium Blvd.
Greenville, SC 29607



- This campus **does not provide** On-campus Student Housing
- This location received data from the local Police Agency [Greenville Police]
- This campus has **no** non-campus buildings

Reportable Criminal Offenses Occurring on CMI Campus			
Criminal Offense	2019	2020	2021
a. Murder/Non-negligent manslaughter	0	0	0
b. Negligent manslaughter	0	0	0
c. Sex offenses – Forcible			
a. Rape	0	0	0
b. Fondling	0	0	0
d. Sex offenses – Non-forcible			
a. Incest	0	0	0
b. Statutory rape	0	0	0
e. Robbery	0	0	0
f. Aggravated assault	0	0	0
g. Burglary	0	0	0
h. Motor vehicle theft	0	0	0
i. Arson [Only fires that are investigated by law enforcement and determined to be arson]	0	0	0

Reportable Criminal Offenses Occurring on Public Property [ADJACENT TO CMI CAMPUS]			
Criminal Offense	2019	2020	2021
a. Murder/Non-negligent manslaughter	0	0	0
b. Negligent manslaughter	0	0	0
c. Sex offenses – Forcible			
a. Rape	0	0	0
b. Fondling	0	0	0
d. Sex offenses – Non-forcible			
a. Incest	0	0	0
b. Statutory rape	0	0	0
e. Robbery	0	0	0
f. Aggravated assault	0	0	0
g. Burglary	0	0	0
h. Motor vehicle theft	0	0	0
i. Arson [Only fires that are investigated by law enforcement and determined to be arson]	0	0	0

Hate Crimes on CMI Campus

There were no reportable hate crimes for the reporting period [2019-2021]

VAWA Offenses Occurring on CMI Campus			
Crime	2019	2020	2021
a. Domestic violence	0	0	0
b. Dating violence	0	0	0
c. Stalking	0	0	0

VAWA Offenses Occurring on Public Property [ADJACENT TO CMI CAMPUS]			
Crime	2019	2020	2021
a. Domestic violence	0	0	0
b. Dating violence	0	0	0
c. Stalking	0	0	0

Arrests on CMI Campus			
Crime	2019	2020	2021
a. Illegal weapons possession	0	0	1
b. Drug law violations	0	0	0
c. Liquor law violations	0	0	0

Arrests – Public Properties [ADJACENT TO CMI CAMPUS]			
Crime	2019	2020	2021
a. Illegal weapons possession	0	0	0
b. Drug law violations	0	0	0
c. Liquor law violations	0	0	0

Disciplinary Actions on CMI Campus			
Crime	2019	2020	2021
a. Illegal weapons possession	0	0	0
b. Drug law violations	0	0	0
c. Liquor law violations	0	0	0

Disciplinary Actions - Public Properties [ADJACENT TO CMI CAMPUS]			
Crime	2019	2020	2021
a. Illegal weapons possession	0	0	0
b. Drug law violations	0	0	0
c. Liquor law violations	0	0	0

Unfounded Crimes on CMI Campus			
	2019	2020	2021
Total unfounded crimes – reportable categories only	0	0	0

200 Brashier Campus Annual Crime Report 2022-2023

1830 West Georgia Road
Simpsonville, SC 29680



- This campus **does not provide** On-campus Student Housing
- This location received data from the local Police Agency [Greenville County Sheriff’s Office]
- This campus has **no** non-campus buildings

Reportable Criminal Offenses Occurring on Brashier Campus			
Criminal Offense	2019	2020	2021
a. Murder/Non-negligent manslaughter	0	0	0
b. Negligent manslaughter	0	0	0
c. Sex offenses – Forcible			
a. Rape	0	0	0
b. Fondling	0	0	0
d. Sex offenses – Non-forcible			
a. Incest	0	0	0
b. Statutory rape	0	0	0
e. Robbery	0	0	0
f. Aggravated assault	0	0	0
g. Burglary	0	0	0
h. Motor vehicle theft	0	0	0
i. Arson [Only fires that are investigated by law enforcement and determined to be arson]	0	0	0

Reportable Criminal Offenses Occurring on Public Property [ADJACENT TO BRASHIER CAMPUS]			
Criminal Offense	2019	2020	2021
a. Murder/Non-negligent manslaughter	0	0	0
b. Negligent manslaughter	0	0	0
c. Sex offenses – Forcible			
a. Rape	0	0	0
b. Fondling	0	0	0
d. Sex offenses – Non-forcible			
a. Incest	0	0	0
b. Statutory rape	0	0	0
e. Robbery	0	0	0
f. Aggravated assault	0	0	0
g. Burglary	0	0	0
h. Motor vehicle theft	0	0	0
i. Arson [Only fires that are investigated by law enforcement and determined to be arson]	0	0	0

Hate Crimes on Brashier Campus

There were no reportable hate crimes for the reporting period [2019-2021].

VAWA Offenses Occurring on Brashier Campus			
Crime	2019	2020	2021
a. Domestic violence	0	0	0
b. Dating violence	0	0	0
c. Stalking	0	0	0

VAWA Offenses Occurring on Public Property [ADJACENT TO BRASHIER CAMPUS]			
Crime	2019	2020	2021
a. Domestic violence	0	0	0
b. Dating violence	0	0	0
c. Stalking	0	0	0

Arrests on Brashier Campus			
Crime	2019	2020	2021
a. Illegal weapons possession	0	0	0
b. Drug law violations	0	0	0
c. Liquor law violations	0	0	0

Arrests – Public Properties [ADJACENT TO BRASHIER CAMPUS]			
Crime	2019	2020	2021
a. Illegal weapons possession	0	0	0
b. Drug law violations	0	0	0
c. Liquor law violations	0	0	0

Disciplinary Actions on Brashier Campus			
Crime	2019	2020	2021
a. Illegal weapons possession	0	0	0
b. Drug law violations	0	0	0
c. Liquor law violations	0	0	0

Disciplinary Actions - Public Properties [ADJACENT TO BRASHIER CAMPUS]			
Crime	2019	2020	2021
a. Illegal weapons possession	0	0	0
b. Drug law violations	0	0	0
c. Liquor law violations	0	0	0

Unfounded Crimes on Brashier Campus			
	2019	2020	2021
Total unfounded crimes – reportable categories only	0	0	0

300 Benson Campus Annual Crime Report 2022-2023

2522 Locust Hill Road
Taylors, SC 29687



- This campus **does not provide** On-campus Student Housing
- This location received data from the local Police Agency [Greenville County Sheriff’s Office]
- This campus has **no** non-campus buildings
- This campus was previously known as the **Greer Campus**

Reportable Criminal Offenses Occurring on Benson Campus			
Criminal Offense	2019	2020	2021
a. Murder/Non-negligent manslaughter	0	0	0
b. Negligent manslaughter	0	0	0
c. Sex offenses – Forcible			
a. Rape	0	0	0
b. Fondling	0	0	0
d. Sex offenses – Non-forcible			
a. Incest	0	0	0
b. Statutory rape	0	0	0
e. Robbery	0	0	0
f. Aggravated assault	0	0	0
g. Burglary	0	0	0
h. Motor vehicle theft	0	0	0
i. Arson [Only fires that are investigated by law enforcement and determined to be arson]	0	0	

Reportable Criminal Offenses Occurring on Public Property [ADJACENT TO BENSON CAMPUS]			
Criminal Offense	2019	2020	2021
a. Murder/Non-negligent manslaughter	0	0	0
b. Negligent manslaughter	0	0	0
c. Sex offenses – Forcible			
a. Rape	0	0	0
b. Fondling	0	0	1
d. Sex offenses – Non-forcible			
a. Incest	0	0	0
b. Statutory rape	0	0	0
e. Robbery	0	0	0
f. Aggravated assault	1	0	0
g. Burglary	0	0	0
h. Motor vehicle theft	0	0	1
i. Arson [Only fires that are investigated by law enforcement and determined to be arson]	0	0	0

Hate Crimes on Benson Campus

There were no reportable hate crimes for the reporting period [2019-2021].

VAWA Offenses Occurring on Benson Campus			
Crime	2019	2020	2021
a. Domestic violence	0	0	0
b. Dating violence	0	0	0
c. Stalking	0	0	0

VAWA Offenses Occurring on Public Property [ADJACENT TO BENSON CAMPUS]			
Crime	2019	2020	2021
a. Domestic violence	0	0	0
b. Dating violence	0	0	0
c. Stalking	0	0	0

Arrests on Benson Campus			
Crime	2019	2020	2021
a. Illegal weapons possession	0	0	0
b. Drug law violations	0	0	0
c. Liquor law violations	0	0	0

Arrests – Public Properties [ADJACENT TO BENSON CAMPUS]			
Crime	2019	2020	2021
a. Illegal weapons possession	0	0	1
b. Drug law violations	0	0	0
c. Liquor law violations	0	0	0

Disciplinary Actions on Benson Campus			
Crime	2019	2020	2021
a. Illegal weapons possession	0	0	0
b. Drug law violations	0	0	0
c. Liquor law violations	0	0	0

Disciplinary Actions - Public Properties [ADJACENT TO BENSON CAMPUS]			
Crime	2019	2020	2021
a. Illegal weapons possession	0	0	0
b. Drug law violations	0	0	0
c. Liquor law violations	0	0	0

Unfounded Crimes on Benson Campus			
	2019	2020	2021
Total unfounded crimes – reportable categories only	0	0	0

400 Northwest Campus Annual Crime Report 2022-2023

8109 White Horse Road
Greenville, SC 29617



- This campus **does not provide** On-campus Student Housing
- This location received data from the local Police Agency [Greenville County Sheriff's Office]
- This campus has **no** non-campus buildings

Reportable Criminal Offenses Occurring on Northwest Campus			
Criminal Offense	2019	2020	2021
a. Murder/Non-negligent manslaughter	0	0	0
b. Negligent manslaughter	0	0	0
c. Sex offenses – Forcible			
a. Rape	0	0	0
b. Fondling	0	0	0
d. Sex offenses – Non-forcible			
a. Incest	0	0	0
b. Statutory rape	0	0	0
e. Robbery	0	0	0
f. Aggravated assault	0	0	1
g. Burglary	0	0	0
h. Motor vehicle theft	0	0	0
i. Arson [Only fires that are investigated by law enforcement and determined to be arson]	0	0	0

Reportable Criminal Offenses Occurring on Public Property [ADJACENT TO NORTHWEST CAMPUS]			
Criminal Offense	2019	2020	2021
a. Murder/Non-negligent manslaughter	0	0	0
b. Negligent manslaughter	0	0	0
c. Sex offenses – Forcible			
a. Rape	0	0	0
b. Fondling	0	0	0
d. Sex offenses – Non-forcible			
a. Incest	0	0	0
b. Statutory rape	0	0	0
e. Robbery	0	0	0
f. Aggravated assault	0	0	0
g. Burglary	2	2	0
h. Motor vehicle theft	0	0	0
i. Arson [Only fires that are investigated by law enforcement and determined to be arson]	0	0	0

Hate Crimes on Northwest Campus

There were no reportable hate crimes for the reporting period [2019-2021]

VAWA Offenses Occurring on Northwest Campus			
Crime	2019	2020	2021
a. Domestic violence	0	0	0
b. Dating violence	0	0	0
c. Stalking	0	0	0

VAWA Offenses Occurring on Public Property [ADJACENT TO NORTHWEST CAMPUS]			
Crime	2019	2020	2021
a. Domestic violence	0	0	0
b. Dating violence	0	0	0
c. Stalking	0	0	0

Arrests on Northwest Campus			
Crime	2019	2020	2021
a. Illegal weapons possession	0	0	0
b. Drug law violations	0	0	0
c. Liquor law violations	0	0	0

Arrests – Public Properties [ADJACENT TO NORTHWEST CAMPUS]			
Crime	2019	2020	2021
a. Illegal weapons possession	0	0	0
b. Drug law violations	0	1	0
c. Liquor law violations	0	0	0

Disciplinary Actions on Northwest Campus			
Crime	2019	2020	2021
a. Illegal weapons possession	0	0	0
b. Drug law violations	0	0	0
c. Liquor law violations	0	0	0

Disciplinary Actions - Public Properties [ADJACENT TO NORTHWEST CAMPUS]			
Crime	2019	2020	2021
a. Illegal weapons possession	0	0	0
b. Drug law violations	0	0	0
c. Liquor law violations	0	0	0

Unfounded Crimes on Northwest Campus			
	2019	2020	2021
Total unfounded crimes – reportable categories only	0	0	0

550 Truist Culinary and Hospitality Innovation Center [CHI] Annual Crime Report 2022-2023

556 Perry Avenue
Suite B-114
Greenville, SC 29611



- This location **does not provide** On-campus Student Housing
- This location has received data from the local Police Agency [Greenville Police]
- This location has **no** non-campus buildings
- 2020 is a partial year – The facility was dedicated on September 29, 2020

Reportable Criminal Offenses Occurring on CHI Property			
Criminal Offense		2020*	2021
a. Murder/Non-negligent manslaughter		0	0
b. Negligent manslaughter		0	0
c. Sex offenses – Forcible			
a. Rape		0	0
b. Fondling		0	0
d. Sex offenses – Non-forcible			
a. Incest		0	0
b. Statutory rape		0	0
e. Robbery		0	0
f. Aggravated assault		0	0
g. Burglary		0	0
h. Motor vehicle theft		0	0
i. Arson [Only fires that are investigated by law enforcement and determined to be arson]		0	0

Reportable Criminal Offenses Occurring on Public Property [ADJACENT TO CHI PROPERTY]			
Criminal Offense		2020*	2021
a. Murder/Non-negligent manslaughter		0	0
b. Negligent manslaughter		0	0
c. Sex offenses – Forcible			
a. Rape		0	0
b. Fondling		0	0
d. Sex offenses – Non-forcible			
a. Incest		0	0
b. Statutory rape		0	0
e. Robbery		0	0
f. Aggravated assault		0	0
g. Burglary		0	0
h. Motor vehicle theft		0	0
i. Arson [Only fires that are investigated by law enforcement and determined to be arson]		0	0

Hate Crimes on CHI Property

There were no reportable hate crimes for the reporting period [2019-2021]

VAWA Offenses Occurring on CHI Property			
Crime		2020*	2021
a. Domestic violence		0	0
b. Dating violence		0	0
c. Stalking		0	0

VAWA Offenses Occurring on Public Property [ADJACENT TO CHI PROPERTY]			
Crime		2020*	2021
a. Domestic violence		0	0
b. Dating violence		0	0
c. Stalking		0	0

Arrests on CHI Property			
Crime		2020*	2021
a. Illegal weapons possession		0	0
b. Drug law violations		0	0
c. Liquor law violations		0	0

Arrests – Public Properties [ADJACENT TO CHI PROPERTY]			
Crime		2020*	2021
a. Illegal weapons possession		0	0
b. Drug law violations		0	0
c. Liquor law violations		0	0

Disciplinary Actions on CHI Property			
Crime		2020*	2021
a. Illegal weapons possession		0	0
b. Drug law violations		0	0
c. Liquor law violations		0	0

Disciplinary Actions - Public Properties [ADJACENT TO CHI PROPERTY]			
Crime		2020*	2021
a. Illegal weapons possession		0	0
b. Drug law violations		0	0
c. Liquor law violations		0	0

Unfounded Crimes on CHI Property			
		2020*	2021
Total unfounded crimes – reportable categories only		0	0

* 09/29/2020 – 12/31/2020

CHI Property Annual Crime Report 2022-2023 – 2

[Back to Table of Contents](#)

**700 South Carolina Army National Guard Readiness Center
Annual Crime Report 2022-2023**

SC Technology and Aviation Center [SCTAC]
915 Perimeter Road
Greenville, SC 29605



- This location **does not provide** On-campus Student Housing
- This location received data from the local Police Agency [Greenville County Sheriff’s Office]
- This location has **no** non-campus buildings

Reportable Criminal Offenses Occurring on SCTAC Property

Criminal Offense	2019	2020	2021
a. Murder/Non-negligent manslaughter	0	0	0
b. Negligent manslaughter	0	0	0
c. Sex offenses – Forcible			
a. Rape	0	0	0
b. Fondling	0	0	0
d. Sex offenses – Non-forcible			
a. Incest	0	0	0
b. Statutory rape	0	0	0
e. Robbery	0	0	0
f. Aggravated assault	0	0	0
g. Burglary	0	0	0
h. Motor vehicle theft	0	0	0
i. Arson [Only fires that are investigated by law enforcement and determined to be arson]	0	0	0

**Reportable Criminal Offenses Occurring on Public Property
[ADJACENT TO SCTAC PROPERTY]**

Criminal Offense	2019	2020	2021
a. Murder/Non-negligent manslaughter	0	0	0
b. Negligent manslaughter	0	0	0
c. Sex offenses – Forcible			
a. Rape	0	0	0
b. Fondling	0	0	0
d. Sex offenses – Non-forcible			
a. Incest	0	0	0
b. Statutory rape	0	0	0
e. Robbery	0	0	0
f. Aggravated assault	0	0	0
g. Burglary	0	0	0
h. Motor vehicle theft	0	0	0
i. Arson [Only fires that are investigated by law enforcement and determined to be arson]	0	0	0

Hate Crimes on SCTAC Property

There were no reportable hate crimes for the reporting period [2019-2021]

VAWA Offenses Occurring on SCTAC Property			
Crime	2019	2020	2021
a. Domestic violence	0	0	0
b. Dating violence	0	0	0
c. Stalking	0	0	0

VAWA Offenses Occurring on Public Property [ADJACENT TO SCTAC PROPERTY]			
Crime	2019	2020	2021
a. Domestic violence	0	0	0
b. Dating violence	0	0	0
c. Stalking	0	0	0

Arrests on SCTAC Property			
Crime	2019	2020	2021
a. Illegal weapons possession	0	0	0
b. Drug law violations	0	0	0
c. Liquor law violations	0	0	0

Arrests – Public Properties [ADJACENT TO SCTAC PROPERTY]			
Crime	2019	2020	2021
a. Illegal weapons possession	0	0	0
b. Drug law violations	0	0	0
c. Liquor law violations	0	0	0

Disciplinary Actions on SCTAC Property			
Crime	2019	2020	2021
a. Illegal weapons possession	0	0	0
b. Drug law violations	0	0	0
c. Liquor law violations	0	0	0

Disciplinary Actions - Public Properties [ADJACENT TO SCTAC PROPERTY]			
Crime	2019	2020	2021
a. Illegal weapons possession	0	0	0
b. Drug law violations	0	0	0
c. Liquor law violations	0	0	0

Unfounded Crimes on SCTAC Property			
	2019	2020	2021
Total unfounded crimes – reportable categories only	0	0	0

**800 McKinney Regional Automotive Technology Center
Annual Crime Report 2022-2023**

227 North Pleasantburg Drive
Greenville, SC 29607



- This location **does not provide** On-campus Student Housing
- This location has received data from the local Police Agency [Greenville Police]
- This location has **no** non-campus buildings

Reportable Criminal Offenses Occurring on McKinney Property			
Criminal Offense	2019	2020	2021
a. Murder/Non-negligent manslaughter	0	0	0
b. Negligent manslaughter	0	0	0
c. Sex offenses – Forcible			
a. Rape	0	0	0
b. Fondling	0	0	0
d. Sex offenses – Non-forcible			
a. Incest	0	0	0
b. Statutory rape	0	0	0
e. Robbery	0	0	0
f. Aggravated assault	0	0	0
g. Burglary	0	0	0
h. Motor vehicle theft	0	0	0
i. Arson [Only fires that are investigated by law enforcement and determined to be arson]	0	0	0

Reportable Criminal Offenses Occurring on Public Property [ADJACENT TO MCKINNEY PROPERTY]			
Criminal Offense	2019	2020	2021
a. Murder/Non-negligent manslaughter	0	0	0
b. Negligent manslaughter	0	0	0
c. Sex offenses – Forcible			
a. Rape	0	0	0
b. Fondling	0	0	0
d. Sex offenses – Non-forcible			
a. Incest	0	0	0
b. Statutory rape	0	0	0
e. Robbery	0	0	0
f. Aggravated assault	0	0	0
g. Burglary	0	0	0
h. Motor vehicle theft	0	0	0
i. Arson [Only fires that are investigated by law enforcement and determined to be arson]	0	0	0

Hate Crimes on McKinney Property

There were no reportable hate crimes for the reporting period [2019-2021]

VAWA Offenses Occurring on McKinney Property			
Crime	2019	2020	2021
a. Domestic violence	0	0	0
b. Dating violence	0	0	0
c. Stalking	0	0	0

VAWA Offenses Occurring on Public Property [ADJACENT TO MCKINNEY PROPERTY]			
Crime	2019	2020	2021
a. Domestic violence	0	0	0
b. Dating violence	0	0	0
c. Stalking	0	0	0

Arrests on McKinney Property			
Crime	2019	2020	2021
a. Illegal weapons possession	0	0	0
b. Drug law violations	0	0	0
c. Liquor law violations	0	0	0

Arrests – Public Properties [ADJACENT TO MCKINNEY PROPERTY]			
Crime	2019	2020	2021
a. Illegal weapons possession	0	0	0
b. Drug law violations	0	0	0
c. Liquor law violations	0	0	0

Disciplinary Actions on McKinney Property			
Crime	2019	2020	2021
a. Illegal weapons possession	0	0	0
b. Drug law violations	0	0	0
c. Liquor law violations	0	0	0

Disciplinary Actions - Public Properties [ADJACENT TO MCKINNEY PROPERTY]			
Crime	2019	2020	2021
a. Illegal weapons possession	0	0	0
b. Drug law violations	0	0	0
c. Liquor law violations	0	0	0

Unfounded Crimes on McKinney Property			
	2019	2020	2021
Total unfounded crimes – reportable categories only	0	0	0

Building Access

The college will be open to students, parents, employees, contractors, guests, and invitees during business hours. During non-business hours, access to all college facilities is by issued key or by admittance via an officer from the GTC Police Department or the GTC Department of Public Safety. All classrooms and labs with equipment (projectors, computers, and the like) should be locked when unoccupied. **Secure classrooms and labs will remain locked until a faculty/staff member is on-site to take control of the room.** The faculty/staff member who controls the classroom/lab should lock it when not in use.



Neither GTC Police Officers nor GTC Public Safety Officers will open private offices for anyone other than authorized personnel. A faculty member must authorize any access to their office **in writing before** Officers can grant access.

During inclement weather closings, the college is closed to all non-essential personnel.

Resources

[Greenville Tech Policies](https://gvltec.edu/administrative-policies/) (https://gvltec.edu/administrative-policies/)

[8-05 Campus Closure Policy](https://www.gvltec.edu/about_greenvilletech/administration_governance/admin_policies/8-05-Campus-Closures-Policy.html) (https://www.gvltec.edu/about_greenvilletech/administration_governance/admin_policies/8-05-Campus-Closures-Policy.html)

[Inclement Weather FAQ](https://www.gvltec.edu/about_greenvilletech/administration_governance/admin_policies/Inclement_Weather_FAQ.html)

(https://www.gvltec.edu/about_greenvilletech/administration_governance/admin_policies/Inclement_Weather_FAQ.html)

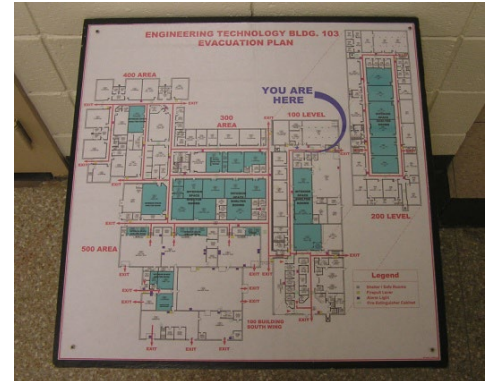
[Back to Table of Contents](#)

Building Evacuations

The Offices of GTC Police, Facilities Management, and Environmental Safety and Health/Department of Public Safety are authorized to initiate the evacuation of a building(s).

The Building Marshals will work with the Emergency Preparedness and Incident Committee (EPIC) to develop emergency and evacuation plans for each building. The plans will include a telephone tree for notifying critical persons in an emergency. All building occupants will receive training in their emergency plan.

Evacuation is not needed nor recommended for all emergencies. The appropriate Building Marshal will distribute evacuation information to staff and faculty, and drills are conducted periodically.



Most buildings on campus have a fire alarm system that will be the primary notification system for emergency evacuation. Everyone must leave the building and move to a safe location when the alarm system sounds. A situation may exist where the building may need to evacuate without activating an alarm. In this event, building evacuation plans will rely on the Building Marshal and Floor Captains to notify occupants of the need to evacuate. After-hours classes and events will be cleared by the GTC Police or the GTC Department of Public Safety.

The following guidelines are critical for a safe and successful building evacuation:

- The individual reaching the outside door first will hold it open for the others.
- Walk to the closest exit in a quiet, orderly manner. If an exit is blocked, the Floor Captain will give guidance on the exit route.
- Do not use elevators; use stairwells for evacuation.
- Faculty should ensure no one remains in classrooms; they should be the last to leave.
- Floor Captains should check all rooms, including rest rooms, conference rooms, and remote areas, closing doors behind them.
- Advise any remaining employees or other persons on the floor about the emergency and the need to evacuate.
- Report any persons refusing to leave or problems to the GTC Police.
- No one should enter the building when the alarm sounds.

Take all fire alarms seriously. Evacuation is mandatory. No one will reenter until the signal is given by the GTC Police or the GTC Department of Public Safety, in consultation with the Fire Department.



If the designated evacuation site is also under an evacuation order, the GTC Police, Department of Public Safety, and Building Marshals will communicate the revised evacuation location.

GTC Police will work with the Office of Disability Services to identify those students, faculty, and staff with disabilities who may need assistance evacuating a building in an emergency. Individuals with disabilities who need help during an evacuation may need to identify individuals in their respective classes or office/work area who can assist.

[Back to Table of Contents](#)

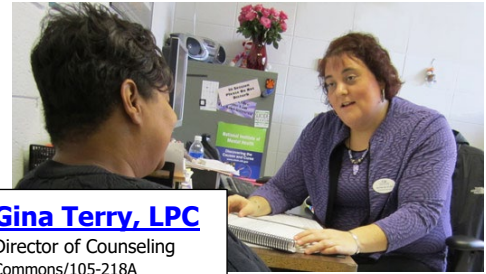
Counseling and Support Services

GTC Counseling Services

Counselors can offer guidance on personal issues, help work through academic concerns, and assist in making career decisions. Share challenges with an experienced and qualified member of our counseling staff.

What is a counselor?

While an advisor ensures that the classes taken meet academic goals, a counselor assists with issues that interfere with studies.



Gina Terry, LPC

Director of Counseling
Commons/105-218A
(864) 250-8157

What can a counselor do for you?

Counselors help to resolve concerns about life inside and outside of the classroom. They assist students on academic probation and suspension and provide information on topics, tactics, and resources to help students succeed.

TRiO Student Support Services (SSS)

TRiO Student Support Services at Greenville Technical College aims to positively impact the educational success of 350 highly motivated students through the delivery of personalized and dynamic services.

Jeannie Knecht

Student Services Coordinator
Engineering Technology Center/103-311
(864) 250-8386

The U.S. Department of Education funds the TRIO program to offer services to particular students to motivate and assist them in obtaining a college degree.

TRIO provides participants with the following services and activities:

- Academic advising
- Cultural activities
- FAFSA assistance
- Financial literacy education
- Four-year college tours
- Grant aid
- Mentoring
- Student success workshops
- Transfer assistance
- Tutoring

Students enrolled in at least one class at the Barton Campus must identify at least one of the following criteria to be eligible to participate in TRIO Student Support Services:

- A low-income student whose taxable income falls within 150% of the poverty level established by the Census Bureau
- A first-generation college student whose parent(s)/legal guardian(s) have not completed a bachelor's degree
- A disabled student with a verifiable learning or physical disability

In addition to meeting one or more of the criteria above, an applicant must:

- Be a United States citizen or permanent resident
- Be able to demonstrate a "need for academic assistance"
- Have earned fewer than 90 hours of credit and do not have an associate or higher level degree

Are you interested in obtaining an application? Please stop by the TRIO Office (Engineering Technologies Building 103, Room 304).

TRiO Upward Bound

Greenville Technical College's Upward Bound Program prepares students to complete high school, enroll, and post-secondary education. Upward Bound fosters the skills, talents, and motivation to succeed through engaging academic instruction, intense college preparation, and enriching cultural experiences.

Diva Hemphill

TRIO Upward Bound Assistant Director
Engineering Technologies Center/103-303
(864) 250-8957

The U.S. Department of Education funds TRIO Upward Bound.

Eligibility Criteria:

65 students from Berea, Carolina, Southside, and Woodmont High Schools
Future First-Generation college students and/or Low Income

Program Objectives:

- Academic performance – GPA Min. 2.5
- Academic performance on standardized test
- Secondary school retention & graduation
- Secondary school graduation – a rigorous program of study
- Postsecondary enrollment
- Postsecondary completion

Program Services and Activities:

- Financial aid information
- ACT/SAT preparation
- Stipends
- Work-study (Summer component)
- Bridge program (two college-level courses)
- College tours
- College admissions assistance
- Advising in college course selection
- Cultural activities
- Academic component (18 Saturdays)
- Instruction in math (through pre-calculus)
- Instruction in composition and literature
- Instruction in laboratory science
- Instruction in Spanish
- Instruction in financial literacy
- Summer component (M-F for six weeks)
- Breakfast and lunch

Student Disability Services

Greenville Technical College is committed to providing equal opportunity for all students with disabilities and assisting students in making their college experience successful per Section 504 and 508 of the 1973 Rehabilitation Act and the Americans with Disabilities Act (ADA) of 1990, and the Americans with Disabilities Amendments of 2010 (ADAA).

Elaine Scott-Mattison

Director, Student Disability Services
Student Center/105-115
(864) 250-8408

Student Disability Services is available to assist in the planning and implementation of appropriate accommodations. Students with a physical or mental impairment that substantially limits a primary life function are responsible for identifying themselves with the Student Disability Services and providing appropriate documentation. This office will then develop an accommodation plan based on the needs of the student and the course requirements. Students are encouraged to contact the office as soon as possible to discuss their individual needs.

Student Disability Services is located in the Student Center (Building 105, Office 113) on the Barton Campus and can be reached by phone at (864) 250-8202 or (864) 250-8408 (V/TTY) or by email at DisabilityServices@gvltec.edu. Appointments are available at the Brashier, Benson, and Northwest campuses.

GTC Center for Collegiate Recovery

The Center for Collegiate Recovery is committed to ensuring that students who are practicing or seeking recovery graduate from Greenville Technical College. See [page 9](#) for more information

Nate Tate

Collegiate Recovery Program Director
Commons/103-218
(864) 250-8774

Resources

National Suicide Prevention Lifeline – Dial **9-8-8** or (800) 273=TALK (8255)

Crisis Text Line – Text "**HOME**" to 741741

[American Red Cross Upstate SC Chapter](https://www.redcross.org/local/south-carolina/about-us/locations/upstate-sc.html) – (864) 271-8222 (https://www.redcross.org/local/south-carolina/about-us/locations/upstate-sc.html)

[Center for Collegiate Recovery](https://www.gvltec.edu/student_resources/student_support/counseling/collegiate-recovery.html) – (864) 250-8774 [x8774]

(https://www.gvltec.edu/student_resources/student_support/counseling/collegiate-recovery.html)

[Compass of Carolina](https://www.compassofcarolina.org/) – (864) 467-3434 (https://www.compassofcarolina.org/)

[Greater Greenville Mental Health](http://greatergreenvillemhc.com/) (http://greatergreenvillemhc.com/)

Greenville – (864) 241-1040

Greer – (864) 879-2111

Simpsonville – (864) 963-3421

[GTC Counseling Services](https://gvltec.edu/counseling/) – (864) 250-8157 [x8157] (https://gvltec.edu/counseling/)

[Julie Valentine Center](https://www.julievalentinecenter.org/) – (864) 331-0560 (https://www.julievalentinecenter.org/)

24/7 Crisis Hotline – (864) 467-3633

[Mental Health America \(MHA\)](https://mhanational.org/) (https://mhanational.org/)

[MHA South Carolina](https://mha-sc.org/) – (https://mha-sc.org/)

[MHA Greenville County](http://www.mhagc.org/) – (864) 467-3344; CRISISline (800) 273-8255 (http://www.mhagc.org/)

[MHA Abbeville County](https://arc.mhanational.org/user/mhaabbeyville) – (864) 379-8117 (https://arc.mhanational.org/user/mhaabbeyville)

[MHA Anderson County](https://arc.mhanational.org/user/mhaanderson) – (864) 984-0635 (https://arc.mhanational.org/user/mhaanderson)

[MHA Greenwood County](https://arc.mhanational.org/user/mhagreenwood) – (864) 229-2833 (https://arc.mhanational.org/user/mhagreenwood)

[MHA Laurens County](https://arc.mhanational.org/user/mhalaurens) – (864) 984-0635 (https://arc.mhanational.org/user/mhalaurens)

[MHA Spartanburg County](https://mhaspartanburg.org/) – (864) 345-0014 (https://mhaspartanburg.org/)

[Miracle Hill Ministries](https://miraclehill.org/) – (864) 268-4357 (https://miraclehill.org/)

[National Domestic Violence Hotline](http://www.thehotline.org/) – Toll-Free (800) 799-SAFE (7233); TTY: (800) 787-3227; Text "**START**" to 88788; [chat live](http://www.thehotline.org/) at the website (http://www.thehotline.org/)

[National Sexual Assault Hotline](https://www.rainn.org/about-national-sexual-assault-telephone-hotline) – Toll-Free (800) 656-HOPE (4673); [chat live](https://www.rainn.org/about-national-sexual-assault-telephone-hotline) at the website (https://www.rainn.org/about-national-sexual-assault-telephone-hotline)

[New Horizons Family Health Services](http://www.newhorizonfhs.org/) – (http://www.newhorizonfhs.org/)

West Faris – (864) 729-8330

Greer – (864) 801-2035

Travelers Rest - (864) 836-1109

Dental – (864) 351-2400

[The Phoenix Center](http://www.phoenixcenter.org) – (864) 467-3790 (http://www.phoenixcenter.org)

[Safe Harbor Shelter](https://www.safeharborpsc.org/) – (864) 467-1177 (https://www.safeharborpsc.org/)

24-Hour Crisis Line Toll-Free (800) 291-2139

[Salvation Army of Greenville](https://www.salvationarmycarolinas.org/greenvillesc/) – (864) 235-4803; Toll-Free (800) SAL-ARMY (725-2769) (https://www.salvationarmycarolinas.org/greenvillesc/)

[Shepherd's Gate \(Miracle Hill\)](https://miraclehill.org/adult/shepherds-gate/) – (864) 268-5589 (https://miraclehill.org/adult/shepherds-gate/)

[South Carolina Coalition Against Domestic Violence and Sexual Assault \(SCCADVASA\)](http://sccadvasa.org) (803) 256-2900 (http://sccadvasa.org)

[United Way of Greenville County Helpline](https://www.unitedwaygc.org/) – Dial **2-1-1** (https://www.unitedwaygc.org/)

[Back to Table of Contents](#)

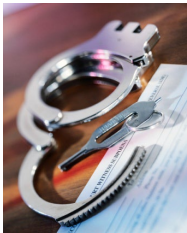
Crime Prevention and Reporting

Greenville Technical College is committed to protecting the welfare of its faculty, staff, and students, as well as its property and facilities. The college strives to minimize the impact of emergencies and assure maximum and efficient utilization of resources in responding to and recovering from any occurrences.



Crime Prevention Tips

One of the most significant issues facing higher education facilities today is campus crime. In one way or another, all facilities are concerned about preventing crimes such as theft, robbery, or sexual assault. The possibility of any student becoming a victim of a crime makes it essential that every person learns how to stay safe on campus.



Students, faculty, staff, and visitors should follow a few essential safety tips to help prevent crime, such as:

- Know the phone number for all emergencies – **9-1-1**. Be prepared to give E-911 Dispatch your complete location and information regarding your surroundings.
- Know the location of emergency telephones.
- Develop a “what if” mentality that allows you to plan how to escape a bad situation. Have a plan of action if you find yourself in a threatening situation. Be prepared to run, scream, or resist attack.
- Be aware of your surroundings. Survey the entire area as you walk to your vehicle or outside buildings. If you feel uncomfortable, call GTC Police for an escort.
- Observe others in the area before leaving a building. Report suspicious persons, panhandlers, or unusual events to GTC Police immediately.
- Avoid one-on-one meetings with acquaintances or strangers. Often, individuals with criminal intent will use diversionary tactics, such as asking for directions, assistance with labels, or panhandling for money or cigarettes.
- Do not work alone in isolated settings, especially on weekends, holidays, or late at night.
- Avoid isolated or dark places where you cannot summon help.
- Walk with friends (especially at night). There is safety in numbers!
- Do not carry large amounts of cash or unnecessary belongings.
- Have your keys ready in your hands. When you approach your vehicle, look for persons who may be hiding nearby. Check the back seat before getting into your car.
- Be aware and concerned about alcohol and other drug use and abuse. Sexual abuse, date rape, and other violent acts occur more often when people are under the influence of alcohol and drugs.
- Report any assault immediately to GTC Police.

Protect Your Property

- Lock doors.
- Keep valuables in your car out of sight. Valuable items in plain view encourage theft and vandalism.
- Keep your belongings with you at all times (books, computer, book bag, coat, purse), even if you are only going to be gone for a short time, such as a quick trip to the restroom. Never leave them unattended.

Identity theft is another serious issue on campuses all across the nation. Every student must learn to protect their identity from computer hackers and predators who may take personal mail directly out of a garbage can. Thousands of people have their identities stolen yearly, and repairing the problem is expensive and time-consuming. It is not something anyone wants to deal with, especially when building a credit history.

Never give anyone your personal information, even if they claim to need it. Protect your social security number, driver's license number, student ID (Colleague/Datatel) number, credit/check card number, computer user name, password, or other login information. Do not carry your social security card in your wallet. If your wallet is lost or stolen, whoever has it will have your information.

Avoid giving out personal information over the phone or in person. Someone may be scamming you or listening to your conversation. Only give out your information in a private school office where you are confident it is safe.



Responsibility to Report Crime

All Greenville Technical College community members, guests, and visitors are encouraged to report emergencies or instances of possible violations of law or college policies to the GTC Police.

Listed below are the types of incidents that may result in injury or severe threat of harm to a person or person's property and require reporting.

- Assault and battery
- Extortion
- Bomb threat
- Possession of weapons on campus
- Sexual offenses
- Vandalism
- Theft of property
- Possession or sale of stolen property
- Arson
- Furnishing, selling, use, or possession of any unauthorized substances described in the code of conduct for college students
- Furnishing, selling, use, or possession of controlled substances, including without limitation drugs, narcotics, or poisons
- Distribution, sale, purchase, manufacture, or unlawful possession of controlled substances while on or within a radius of one-half mile of the college
- Threatening to take the life of or inflict bodily harm upon another



Reporting a Crime

GTC Police encourages everyone to immediately report crimes, incidents, and suspicious activities on campus to the department. Report crimes in several ways:

- By phone: **9-1-1**
- By emergency phone (Barton Campus): press the red button
- By email (non-emergency reporting only): police@gvltec.edu
- In-person to GTC Police on the Barton Campus; Building

103 Suite 123/124

- In-person to the Department of Public Safety Officers, who will then contact GTC Police:
 - Brashier Campus; Building 201 Rotunda
 - Benson Campus; Building 301 Room 128A
 - Northwest Campus; Building 402 Main lobby (next to Heritage Hall)
 - Student Services or Information Desk for help in locating the Public Safety Officer on duty or for assistance in notifying GTC Police

Please be prepared to provide the following information:



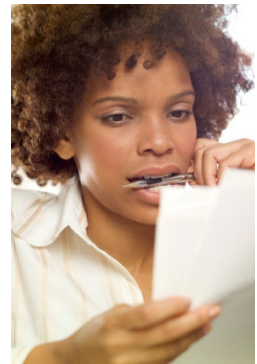
- Name of the person calling in the report (not required but recommended)
- Nature of the incident
- Location of the incident
- Description of the person or persons involved
- Description of property involved
- Names of people involved if known
- Any other pertinent information

Campus Security Authorities

The Jeanne Clery Disclosure of Campus Security Policy and Campus Crime Statistics Act final rule of November 1, 1999, designates certain college community members as Campus Security Authorities (CSAs). It requires all institutions to collect crime reports from various individuals and organizations that the Act considers "Campus Security Authorities." The Clery Act defines FOUR categories of Campus Security Authorities:

1. Campus Police & Security Personnel
2. Individuals responsible for safety but are not campus police or security, student escorts, student security, or parking monitors.
3. Officials of institutions with "significant responsibility for student campus activities," e.g., Coaches and Trip Advisors.
4. Individuals designated under school policy as individuals to report crimes, e.g., Dean of Students, student housing management and resident assistants, and others in authority.

These are not campus security authorities: a single teaching faculty member (other than an adviser to a student group), a physician in a campus health center, a counseling center counselor whose only responsibility is to provide care to students, or campus clerical staff.



A Campus Security Authority (CSA) is not responsible for determining whether a crime occurred. That is the function of law enforcement. Federal law requires CSAs to report the offenses listed in the following paragraph for statistical purposes when they have direct knowledge or receive the report.

Federal law requires Greenville Technical College to report statistics concerning the occurrence of certain criminal offenses reported to the Police or any Campus Security Authority, including murder/non-negligent manslaughter; negligent manslaughter; sex offenses (forcible and non-forcible, dating and domestic violence, and stalking); robbery; aggravated assault; burglary; motor vehicle theft; arson; liquor law violations; drug violations; and illegal weapons possession. We are required to report offenses occurring on campus, on non-campus property utilized by the institution, and on public property adjacent to the campus. Refer to [page 12](#) of this report for the list of these offenses with details.

Crime Definitions Used for This Reporting Program:

Definitions and descriptions of crimes listed above, required to be reported by CSAs under this program, are contained in the **Glossary of Terms Used in the Annual Security Reports** on [pages 13-15](#) of this report.

Many crimes in the United States go unreported because victims fail to report them for numerous reasons. Everyone is encouraged to report crimes to GTC Police to protect and aid potential or past victims. CSAs provide an option to victims for counseling and other assistance while anonymously reporting crimes if so desired.

Escorts

GTC Police and Department of Public Safety Officers are available to escort faculty, staff, students, and visitors to and from areas on campus as requested. Contact us at (864) 250-8001 (x8001) to request an escort. On the Barton Campus, emergency phones are also available; press the red button. A Police or Public Safety Officer will assist as soon as available.

Resources

[Crime Stoppers](http://greenville.crimestoppersweb.com/) – (864) 23-CRIME (232-7463) (<http://greenville.crimestoppersweb.com/>)

Dean of Students – Brett Gaffney (864) 250-8100 [x8100]

Associate Dean of Students – Dr. Travis Gleaton (864) 236-6523 [x6523]

[Greenville Technical College Police](#) – **Emergency Dial 9-1-1 (9-1-1 from any campus extension)**

Non-emergency (864) 250-8001 (<https://gvltec.edu/police/>)

[Julie Valentine Center](#) – Rape Crisis Hotline (24/7/365) – (864) 467-3633

(<https://www.julievalentinecenter.org/>)

[ReportIt Citizen Property Inventory System](#), Powered by LeadsOnline

(<https://reportit.leadsonline.com/>)

[South Carolina Sex Offender Search](http://scor.sled.sc.gov/) – <http://scor.sled.sc.gov/>

[Back to Table of Contents](#)

Emergency Phones

Emergency phones are located throughout the Barton Campus. These phones connect directly with the Greenville City E-911 Center. They will dispatch GTC Police as necessary.



Barton Campus Emergency Phone Locations

Press the red button on the phone, and wait for E-911 Dispatch to answer.

No.	Location	No.	Location
1	103/ET North Side facing 124/Michelin	11	102/SSC West Side facing Lot N
2	103/ET South Side facing Lot H	12	108/IE Logistics North Stair 2 nd Floor (107)
3	104/UT East Side facing 103/ET	13	108/IE Logistics South Stair 2 nd Floor (103)
4	104/UT West Side facing McAlister Rd./Back Lawn	A	Lot F Next to Brister Blvd.
5	105/SC South Side [Courtyard]	B	Front of 120/HS adjacent to McAlister Rd. across from Lot D
6	121/CJ South Side facing Brister Blvd.	C	Lot H between 104/UT and 105/SC
7	119/CHS West Side facing 118/CDC	D	Near Lot C between 104/UT and Traffic Circle
8	106C/Cosmetology facing Lot K	E	Lot I Side Lot (Dental Side)
9	117/NS North Side near Entrance	F	Lot I Front Lot (Morgan Manor side)
10	112/DEN North Side facing Lot O		



[Back to Table of Contents](#)

Emergency Messaging



Every student, faculty, and staff member of Greenville Technical College is also a member of GTC Regroup Messaging. We use SMS Text Messaging, email, and other methods to communicate during emergencies, send advisories and distribute additional information. Greenville Technical College controls GTC Regroup Messaging, and text and email messages will only come from the College.

Do you need to make changes to your account? The contact information (name, address, phone numbers, email addresses) in Colleague, GTC's database is also the information in GTC Regroup. This information must be current. *Students* can update contact details by using **SelfService** within [GTC4me](https://gtc4me.gvltec.edu/) (<https://gtc4me.gvltec.edu/>).

Faculty/Staff should submit a current [Address/Emergency Contact](#) form to Human Resources to update personal information.

(<https://mygvltec.sharepoint.com/sites/resources4me/gtcdocumentation/Human%20Resources%20Documents/Emergency%20Contact%20Form.pdf>) to Contact Human Resources at (864) 250-8192 (x8192) if you need further guidance.

Persons not affiliated with Greenville Technical College, such as parents of students, individuals affiliated with the Middle Colleges (Charter High Schools) on our campuses, the University Center, Greenville Early College located at the University Center, and any interested party are encouraged to sign up and maintain accounts on the [GTC Regroup Messaging System](#) (<https://gvltec.edu/GTCRegroup>).

Federal regulations require a minimum of 1 test of the system per semester. Disclosure of personal information to anyone without an official educational interest violates the Family Educational Rights and Privacy Act of 1974 (FERPA). Student information will not be sold or given to anyone. The messaging system is for official use only.

Resources

[GTC Regroup Messaging email contact](#)

(GTCRegroupHelp@gvltec.edu)

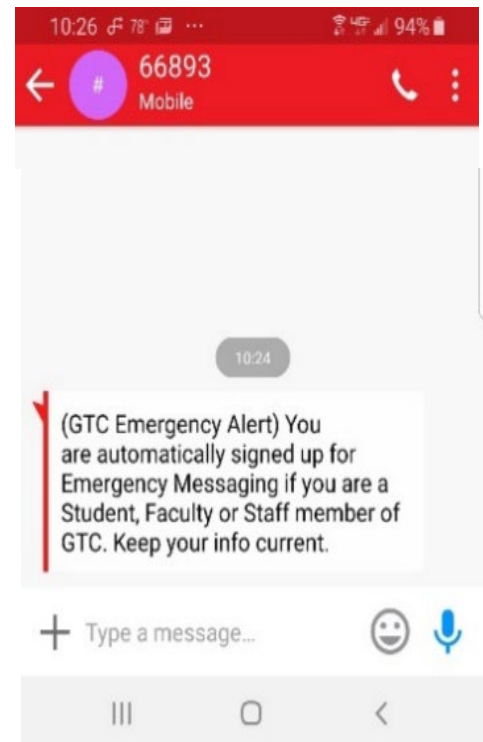
[GTC Regroup Messaging signup for Non-affiliated Persons of GTC](#)

(<https://gvltec.edu/GTCRegroup>)

[GTC Human Resources](#) (864) 250-8192 [x8192]

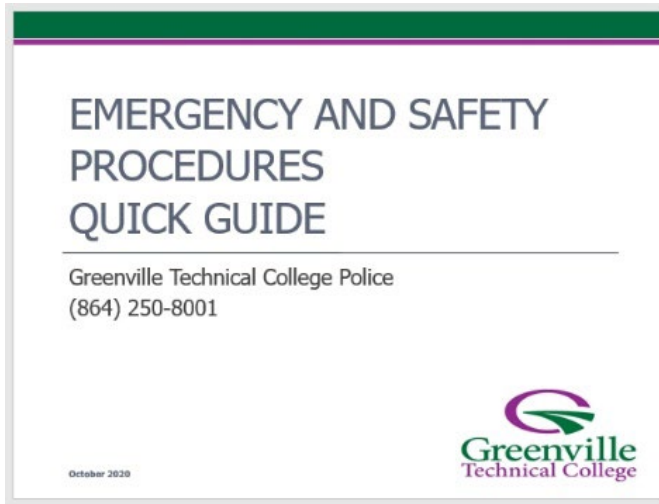
(https://www.gvltec.edu/about_greenvilletech/employment/)


[GTC4me](#) – *login required* (<https://gtc4me.gvltec.edu/>)



[Back to Table of Contents](#)

Emergency Procedures



The college has an EMERGENCY AND SAFETY PROCEDURES QUICK GUIDE, establishing guidelines and procedures to help make the best use of available resources during disasters. The goals are to minimize loss of life or injury and protect college resources and facilities. The manual is in a digital magazine format. It is available to all college faculty and staff members with computer access. A link to the manual is on every college computer on the desktop; the icon appears above right. The link also appears on the [GTC4me](https://gtc4me.gvltec.edu/) (<https://gtc4me.gvltec.edu/>) main page – *login required* under **Quick Links**. 

When a major incident occurs, the Emergency Preparedness and Incident Committee (EPIC) will activate the plan, immediately establishing an emergency operations center and mobilizing key officials. The plan includes procedures for communicating with those directly affected by the situation and with the general public.

Resources

- [Federal Emergency Management Agency](https://www.fema.gov/) (<https://www.fema.gov/>)
- [Greenville County Emergency Management Division](http://www.gceoc.com/) (<http://www.gceoc.com/>)
- [SC Emergency Management Division](http://www.scemd.org/) (<http://www.scemd.org/>)

[Back to Table of Contents](#)

Emergency Preparedness and Incident Committee (EPIC)

Per the Campus Emergency Guidelines, the Emergency Preparedness and Incident Committee (EPIC) is in place. EPIC will gauge the scope of any incident and advise the President. EPIC has also established response strategies, will deploy resources, and initiate the emergency recovery process.

Communications During a Crisis



All communications during an event will originate with the Director of Executive Communications and Public Relations. The Director will meet with EPIC or, in certain situations, another member of EPIC to develop a statement of facts. With back-up provided by the Director of Marketing and Communications and working with the Chief of Police, the Director will expediently communicate to the public. Statements for the media and press conferences will occur as the situation dictates. The plan

also requires notification of the President's Cabinet and the Area Commission as needed before the message flow described above begins.

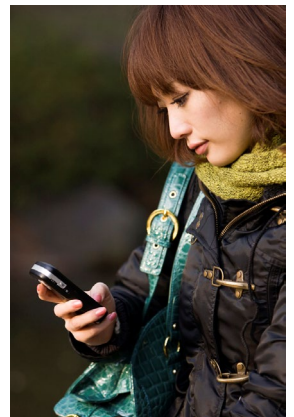
Emergency Messaging Alerts

Emergency Messaging Alerts to students, faculty, and staff are available via our GTC Regroup Messaging System. See **Emergency Messaging**, [page 44](#), for more information.

Timely Warnings

A campus-wide *timely warning* will be issued without delay when a situation arises that constitutes a credible ongoing or continuing threat, either on or off-campus. Timely warnings will primarily utilize GTC Regroup Messaging. Other methods may include as necessary:

- Desktop alerts
- Digital Signage
- College website
- Exterior electronic signs
- Social media
- Blackboard banner message
- Switchboard
- Child Development Center notification to parents



Anyone with information warranting a timely warning should immediately report the circumstances to the GTC Police by phone (864) 250-8001 [x8001] or in person at GTC Police Headquarters, Barton Campus Building 103 Suite 123/124.

[Back to Table of Contents](#)

Fire Safety

Only trained faculty or staff should use a fire extinguisher. Follow these steps if a fire occurs in any building on campus:

- **Sound the fire alarm immediately.**
- Dial **9-1-1** as soon as safely possible and give the Dispatcher as much information as possible about the fire.
- Evacuate the building following the building evacuation plans, summarized on [page 35](#).
- Do not close windows; close doors, but do not lock them.
- Everyone must remain out of any driveway or other hard-surfaced area close to the building.
- Evacuees should proceed to the designated Rally Point.
- GTC Police or Department of Public Safety Officers will be designated to meet the first responder with a master key.
- Access roads will be kept open for emergency vehicles. GTC Police will designate an individual or group of individuals to ensure that all access roads are open.
- Students, faculty, and staff members will be allowed to return to the building only at the direction of GTC Police or the Department of Public Safety in consultation with the Fire Department command.



Find residential fire safety information for Student Housing in Section 2 (**Campus Fire Safety Annual Compliance Report**) beginning on [page 72](#).

Resources

Fire – Dial 9-1-1 (9-1-1 from any campus extension)

[Greenville Tech Policies](https://gvltec.edu/administrative-policies/) (<https://gvltec.edu/administrative-policies/>)

[4-8 Fire Device Use Policy](https://gvltec.edu/4-8_Fire_Device_Use_Policy/) (https://gvltec.edu/4-8_Fire_Device_Use_Policy/)

Non-emergency Numbers for Fire Departments

- [Greenville City Fire Department](#) *Barton – Gene Haas Center for Manufacturing Innovation – McKinney Regional Automotive Technology Center – Truist Culinary & Hospitality Innovation Center* – (864) 232-CARE (2273) (<https://www.greenvillesc.gov/1402/Fire-Department>)
- [Lake Cunningham Fire Rescue](#) *Benson* – (864) 895-1212 (<http://www.lcfid.us/>)
- [South Greenville Fire District](#) *Brashier* – (864) 243-5650 (<http://sgfdfire.com/>)
- [Berea Fire Department](#) *Northwest* – (864) 294-4848 (<http://www.bereafire.com/home.htm>)
- [Donaldson Center Fire Department](#) *SCTAC* – (864) 277-1429 (<http://www.donaldsoncenterfd.com/>)



[Back to Table of Contents](#)

Inclement Weather



Severe or inclement weather includes:

- **Severe thunderstorms:** Thunderstorms having tornadoes, gusts at least 58 mph, or hail at least $\frac{3}{4}$ inch in diameter
- **Tornado Watch:** Conditions are favorable for tornado or severe weather
- **Tornado Warning:** Tornado has been sighted or indicated by Doppler radar
- **Winter Storms:** Storms likely to bring ice, strong winds, freezing rain, and snow

Notification of Severe Thunderstorm or Tornado

By Federal law, all smartphones receive localized emergency notification alerts. The GTC Police and the Department of Public Safety also monitor NOAA Weather Radio and other sources. If a severe thunderstorm or tornado warrants additional notification, faculty, staff, and students may receive a Regroup emergency message.

Upon notification or observation of a severe storm:

- Anyone outside should come into a building.
- Avoid auditoriums, gymnasiums, or other structures with wide, free-span roofs.
- Stay away from windows and exterior doors.
- Faculty and staff should close all windows and blinds to create a protective barrier against flying debris.
- Move away from glass/window areas and proceed to a designated position against an inner hallway on the lowest floor or a smaller interior room without windows, such as a bathroom or closet. Many of these rooms have signage.
- If sheltering in an interior room/office, go to the center of the room. Stay away from corners as they attract debris.
- Get under a piece of sturdy furniture such as a workbench, heavy table, or desk.
- Assume a kneeling position, head down, and use arms to protect your head and neck from falling or flying debris.
- Remain quiet so everyone can hear directions given by the building safety marshals.
- Anyone in unsafe locations must move to an assigned shelter area on campus. Areas designated as dangerous are areas outside the buildings on campus.
- Never try to "outdrive" a tornado. Abandon the vehicle immediately and take shelter in a nearby building, lie in a ditch, culvert, or low-lying area, or crouch near a strong structure. Be aware of the potential for flooding. Use arms to protect the head and neck.



Once the threat of severe weather has passed, GTC Police will give the building safety marshals an all-clear signal. Building occupants are not to return to their offices or classrooms until cleared by authorized personnel (GTC Police, GTC Department of Public Safety officers, building safety marshals, or floor captains).

Campus Closure Policy

Adapted from [Greenville Tech Administrative Policy 8-05 Campus Closures](#), revised 1/25/2019

(https://www.gvltec.edu/about_greenvilletech/administration_governance/admin_policies/8-05-Campus-Closures-Policy.html)



In the event of inclement weather, Greenville Technical College will close or adjust its operating hours in the interest of student and employee safety. Greenville Technical College will determine its own schedule and NOT follow the schedule of Greenville County Schools in all instances. Decisions and announcements regarding college classes and activities will be INDEPENDENT of Greenville County Schools and announced and posted on area media outlets and college information sites. Decisions regarding employees WILL follow the decision of Greenville County offices.

Information and Questions

For answers and up-to-date information regarding campus closures, please refer to the online [Inclement Weather FAQ](#) on the Greenville Technical College website

(https://www.gvltec.edu/about_greenvilletech/administration_governance/admin_policies/Inclement_Weather_FAQ.html).

Please do not contact GTC Police directly for closure information; in particular, do not dial 9-1-1 unless there is an emergency.

Severe Weather Damage

If damage occurs to a building on campus during a severe weather event, notify GTC Police immediately.

- Upon notification, GTC Police, Facilities Resources, or the Department of Environmental Health and Safety/Department of Public Safety, in collaboration with the building safety marshal, will decide to evacuate and move to another building or stay within the damaged building, depending on the damage assessment.
- In a building evacuation, follow standard evacuation procedures and assist any injured or trapped persons.
- The building safety marshal will communicate any injuries to GTC Police. Do not try to move the seriously injured unless they are in immediate danger of further injury. If urgent, contact EMS Dispatch immediately by dialing **9-1-1**.
- Once evacuated, stay out of the building until GTC Police determines that return is safe.
- Reassignment of classrooms will be made as quickly as possible.



Resources

[Accuweather](#) (https://www.accuweather.com/en/us/greenville/29607/weather-forecast/12555_pc)

[Ambient Weather PWS Network](#) (<https://ambientweather.net/>)

[Greenville Tech Policies](#) (<https://gvltec.edu/administrative-policies/>)

[8-05 Campus Closure Policy](#) (https://www.gvltec.edu/about_greenvilletech/administration_governance/admin_policies/8-05-Campus-Closures-Policy.html)

[Inclement Weather FAQ](#)

(https://www.gvltec.edu/about_greenvilletech/administration_governance/admin_policies/Inclement_Weather_FAQ.html)

[NOAA National Weather Service](#) (https://forecast.weather.gov/MapClick.php?lat=34.84287400383329&lon=-82.37665310035953#.V-rke_krK70)

[The Weather Channel](#) (<https://weather.com/weather/today/l/29607:4:US>)

[Weather Underground](#) (<https://www.wunderground.com/weather/us/sc/greenville/29607>)

[Windy.com](#) (<https://www.windy.com/34.826/-82.370?34.826,-82.371,17,m:eDdadRR>)

[Back to Table of Contents](#)

Medical Emergencies



Greenville County Emergency Medical Service (EMS) provides emergency services for all campuses. If there is a situation on campus in which a faculty or staff member, a student, or a campus visitor is injured or seriously ill, immediately contact

EMS. Often, when an individual should be treated immediately by a medical doctor, time is of the essence. Do not hesitate to call for assistance.

When a medical emergency happens, **remain calm, call 9-1-1**, or use an Emergency Call Box. Be prepared to provide the dispatcher with your name, the location, the injury information, and the person's current status, i.e., conscious, unconscious, or breathing.

Do not move the injured person unless safety concerns dictate doing so. Comfort the person and assure them that medical assistance is on the way. If properly trained and the situation dictates, use pressure to stop bleeding and provide basic life support (CPR).

Do not jeopardize your health or the health of the person. Wait for professional help if unable to provide proper first-aid safely.

The GTC Police will activate EPIC as necessary.

Follow emergency procedures for information communication to the staff, students, and evacuation.



Automated External Defibrillators (AEDs)

AEDs are located throughout all campuses and locations. An AED should be within 3 minutes of any area. Only individuals certified in their use should attempt the use of AEDs. Training is available periodically through the Environmental Health and Safety/Department of Public Safety Office. Contact John Moore, Environmental Health and Safety Manager, (864) 250-8205 (x8205); John.Moore@gvltec.edu. **Initiate CPR only after EMS has been notified.**

EMT/Paramedic Program on Campus

Any citizen can assist in emergencies as a good Samaritan, including instructors and students in the EMT/Paramedic Program. However, they cannot respond to emergencies on campus in an official capacity.

Contact Information

Greenville County EMS – Dial 9-1-1 (9-1-1 from any campus extension)

[Palmetto Poison Center](tel:(800)222-1222) – (800) 222-1222

[Back to Table of Contents](#)

Missing Student Notification

Greenville Technical College sets forth these policies and procedures for Missing Student Notification for Student Housing residents. Under the Higher Education Act (HEA), as amended, these procedures are required.

Reporting Procedures

If a resident of Student Housing is missing for 24 hours or more, report the missing student to either Greenville Police or Front Porch Management. Nothing in this policy precludes implementing these procedures in less than 24 hours if circumstances warrant a faster implementation.

Option to Register Confidential Contact

Student Housing residents may, at their option, register a confidential contact person if a resident is determined to be missing. Residents should register their confidential contact person to management in the Leasing Office of Front Porch Housing. Only authorized campus officials, including Front Porch Management, Greenville Police, GTC Police, the Dean of Students, and the Office of the President are permitted to access this information in the event of a missing persons report. In addition, Local, State, and Federal Law Enforcement may access this information during an investigation.



Procedure

As Front Porch Housing is under the jurisdiction of the Greenville Police Department, GPD will initiate procedures according to their Policies and Procedures/General Orders. GTC Police will assist as requested. We offer the following Preliminary Investigation and Search guidelines as a reference for what may occur at the outset of such an incident.

Preliminary Investigation and Search

The preliminary investigation gathers information and takes steps that will aid in searching for and locating a missing person, including collecting the following types of information and materials:

- A complete description of the missing person along with a recent photograph
- Details of any physical or emotional problems
- Identity of the last person(s) to have seen the missing person, as well as friends, relatives, coworkers, or associates who were or may have been in contact with the subject before disappearance
- Plans, habits, routines, and personal interests of the missing person, including places frequented or locations of particular personal significance
- Indications of missing personal belongings, particularly money and other valuables
- Any suggestions of foul play or accident

Contact Information

Greenville Police Emergency – Dial 9-1-1

Greenville Police Non-emergency – (864) 271-5333

[Back to Table of Contents](#)

Police

Greenville Technical College is a relatively large community of well over 10,000 college students, faculty, staff, and numerous continuing education students spread throughout our community. This population occupies five (5) campuses and nine (9) different locations throughout the City and County of Greenville. The college is as large as some of the municipalities in the area during the day. Although our campuses and schools are relatively safe, they are not crime-free. No community in America can make that claim.



The Greenville Technical College Police Department [GTCPD] provides a 24-hour certified police department to enforce all federal, state, county, and municipal laws. We also offer educational and crime-prevention programs and escort services for students, faculty, and staff. GTCPD is the primary law enforcement agency for all Greenville Technical College campuses and locations. The Department works closely with the Greenville Police Department, Greenville County Sheriff's Office, Greenville County Department of Public Safety Forensics, and other city, county, state, and federal agencies to help ensure the safety of everyone on campus.

GTC Police Officers are certified by the S.C. Criminal Justice Academy and commissioned by the Office of the Governor as State Constables, having statewide jurisdiction. However, our officers generally limit enforcement activities to the campuses and areas surrounding our campuses. Sworn Police Officers wear gold badges, and most are in a dark navy uniform. Our Police Officers are armed. We work hard to develop relationships with students, faculty, and staff to increase awareness and a positive exchange of information.



When a student has committed a minor offense, GTC Police Officers may use their discretion and submit a disciplinary referral to the Dean of Students or Campus Pointe Housing Management instead of placing the student under arrest. The Greenville County Detention Center, a part of the Greenville County Law Enforcement Center complex located at 4 McGee Street, provides arrestee detention services. East Greenville Summary Court, located at 320 West Main Street in Taylors, is the venue for hearing misdemeanor offenses. General Sessions Court is the venue for high court adjudication. Those trials are held at the Greenville County Courthouse, 305 East North Street, Greenville, SC 29601. Family Court, where juvenile cases are heard, is located at 350 Halton Road, Greenville, SC 29601. Prosecutions are conducted by the 13th Circuit Solicitor's Office, Greenville County Courthouse, 305 East North St., Suite 325, Greenville, SC 29601.

Resources

[East Greenville Summary Court](https://www.greenvillecounty.org/MagistrateCourts/EastGreenville.aspx) (Magistrate) – (864) 467-4625

<https://www.greenvillecounty.org/MagistrateCourts/EastGreenville.aspx>

[Greenville County Family Court](https://www.greenvillecounty.org/FamilyCourt/) (Juveniles) – (864) 467-5900

<https://www.greenvillecounty.org/FamilyCourt/>

[Greenville Technical College Police](https://gvltec.edu/police/) – <https://gvltec.edu/police/>

GTC Police Emergency – Dial 9-1-1 (9-1-1 from any campus extension)

GTC Police Office – (864) 250-8001 [option 1] (x8001)

[13th Circuit Solicitor Greenville](https://www.greenvillecounty.org/Solicitor/) – (864) 467-8647 – <https://www.greenvillecounty.org/Solicitor/>



[Back to Table of Contents](#)

Public Safety/Environmental Health and Safety

The GTC Department of Public Safety, a part of the Office of Environmental Health and Safety, consists of non-commissioned Public Safety Officers who assist in several areas:

- Safety and Security
- Parking enforcement
- Building security
- Safety and environmental inspections (fire extinguishers and emergency lighting)
- Machine room inspections

Identify Public Safety Officers by their light blue uniform shirt, dark navy trousers, and two-tone nickel and gold badge. Contract security will wear their company's uniform.



The Department of Public Safety officers work closely with the GTC Police to provide a safe and secure campus. If you need an escort, please contact GTC Police Dispatch at (864) 250-8001 [option 1] (x8001). On the Barton Campus, emergency phones are also available; press the red button. A Police or Public Safety Officer will be dispatched as soon as available.



Resources

GTC Department of Environmental Health and Safety/Department of Public Safety

John Moore, Environmental Health and Safety Manager (864) 250-8205 (x8205)

GTC Non-Emergency Dispatch – (864) 250-8001 [option 1] (x8001)

[Back to Table of Contents](#)

Sex Offenders

Several Federal laws and regulations require that the Greenville Technical College Police Department provide links to local and state Sex Offender Registries. These laws include:

- The **Campus Sex Crimes Prevention Act of 2000**
- The **Jacob Wetterling Crimes Against Children and Sexually Violent Offender Registration Act**
- The **Jeanne Clery Act**
- The **Family Educational Rights and Privacy Act of 1974 [FERPA]**

A link to the South Carolina Sex Offender Registry, along with instructions to help search for offenders on or near all campus and off-campus locations of Greenville Technical College, is located on the [college website](#) (<https://gvltec.edu/sex-offender-registry/>). The direct link to the [Sex Offender Registry](#) is <http://scor.sled.sc.gov/>. For further assistance, please contact the GTC Police Department.

The South Carolina Sex Offender Registry

South Carolina now utilizes a sex offender management application called SORT, which provides information sharing across all jurisdictions. SORT provides community notifications and automatic updates to the National Sex Offender Public Web Site. The offender registry includes:



- Photographs of the offender over time
- Offender's residence
- Aliases
- All sexually related convictions

The County Sheriff's Offices and the South Carolina Law Enforcement Division update this information regularly to ensure it is as complete and accurate as possible. However, this information can change quickly, and information on registered sex offenders is often provided by the registered sex offender themselves as required by law. Local law enforcement officials may not have verified this information when posted on the website. Please understand that the information provided on the site is information of record and may not reflect the current residence, status, or other information regarding a registered sex offender.

Individuals included within the Registry are included solely by virtue of their conviction record and state law. The primary purpose of providing this data on the Internet is to make the information more readily available and accessible, not as a warning about any specific individual.



Residency Restrictions for Sex Offenders

Under South Carolina Code of Law §23-3-535 et seq., residency restrictions are imposed on sex offenders convicted of the following:

- criminal sexual conduct with a minor, first degree
- criminal sexual conduct with a minor, second degree
- assault with intent to commit criminal sexual conduct with a minor
- kidnapping a person under eighteen years of age
- trafficking in persons of a person under eighteen years of age except when the court makes a finding on the record that the offense did not include a criminal sexual offense or an attempted criminal sexual offense

It is unlawful for a sex offender convicted of any of these offenses to reside within 1000 of a school, daycare center, children's recreational facility, park, or public playground. This law became effective on February 14, 2011, and offenders residing within this area before this date are exempt from the requirement.

- A **Daycare center** means an arrangement where, at any one time, there are three or more preschool-age children or nine or more school-age children receiving child care.
- A **School** does not include a home school or an institution of higher education.
- **Within one thousand feet** means a measurement made straight from the residence's closest point to the structure's nearest point. Intervening structures and objects within this line do not affect this measurement.



Greenville Technical College has four (4) facilities that meet these definitions:

Barton Campus, 506 S. Pleasantburg Dr., Greenville, SC 29607

- Child Development Center, Building 118, Barton Campus (daycare center)
- Greenville Technical Charter High School, Buildings 119/120 (school)

Brashier Campus, 1830 W. Georgia Rd., Simpsonville, SC 29680

- Brashier Middle College Charter High School, Building 203 (school)

Benson Campus, 2522 Locust Hill Rd., Taylors, SC 29687

- Greer Middle College Charter High School, 138 W McElhaney Rd. (school)

Resources

[GTC Locations and Sex Offender Search Instructions](https://gvltec.edu/sex-offender-registry/) – <https://gvltec.edu/sex-offender-registry/>

[South Carolina Sex Offender Search](http://scor.sled.sc.gov/) – <http://scor.sled.sc.gov/>

[South Carolina Code of Laws, Title 23, Chapter 3](http://www.scstatehouse.gov/code/t23c003.php) – <http://www.scstatehouse.gov/code/t23c003.php>

[Back to Table of Contents](#)

Sexual Violence and Misconduct

The Campus Sexual Violence Elimination Act (Campus SaVE), incorporated within the reauthorization of the Violence Against Women's Act (VAWA) as amended in 2013, requires these statements and advisories.

Programs and Information Regarding Sexual Violence

It is illegal to commit sexual violence, including domestic violence, dating violence, and stalking. These acts are incompatible with the college's goal of providing a healthy educational environment for students, faculty, staff, and guests and will not be tolerated on campus. Sexual offenses involve physical contact of a sexual nature, against one's will or without one's consent. Consent requires a voluntary, positive agreement between the participants to engage in specific sexual activity. Nonconsensual sexual activity would include, but is not limited to:

- Nonconsensual sexual intercourse or penetration (vaginal, oral, or anal) by any means;
- Nonconsensual sexual contact (any touching of intimate body parts with any body part or object without consent);
- Sexual contact with a person while knowing or having reason to know that the person is incapacitated by any means (including alcohol or other drugs)



A stranger or acquaintance can perpetrate sexual violence. Both men and women can be victims or perpetrators.

- **Domestic Violence** is a pattern of abusive behavior in any relationship that one partner uses to gain or maintain power and control over another intimate partner. Domestic violence can be physical, sexual, emotional, economic, or psychological actions or threats that influence another person, including any behaviors that intimidate, manipulate, humiliate, isolate, frighten, terrorize, coerce, threaten, blame, hurt, injure, or wound someone. Domestic violence includes but is not limited to any abusive, violent, coercive, forceful, or threatening act or word inflicted against the victim by the victim's current or former spouse, current or former cohabitant, or a person similarly situated under domestic or family violence law, or anyone else protected under domestic or family violence law.
- **Dating Violence** includes offenses committed against a victim who has been in a social relationship of a romantic or intimate relationship with the victim.
- **Stalking** is a course of conduct directed at a person that would cause a reasonable person to fear for their own or others' safety or suffer substantial emotional distress.

Greenville Technical College will invite local advocacy organizations to campus events to provide information for the prevention and awareness of rape, acquaintance rape, and other sex offenses throughout the year. Bystander intervention and risk assessment will be a part of these educational programs. For instance, in a situation involving sexual assault, relationship violence, or stalking, a bystander should minimize risk and:

- Approach everyone as a friend;
- Not be antagonistic;
- Avoid violence;
- Be honest and direct whenever possible;
- Recruit help, if possible;
- Keep safe; and
- If things get out of hand, contact the police.

Reporting and Disciplinary Procedures

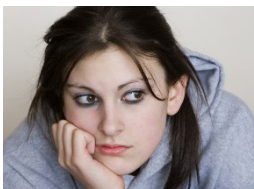
We will assist any student or employee who wishes to report that they have been a victim of domestic violence, dating violence, sexual assault, or stalking. The victim can notify GTC Police or the local agency with jurisdiction if the incident occurs off-campus. At the victim's request, college officials will assist in notifying the proper authorities. Victims of sexual assault or rape should follow these recommended steps:



- Go to a safe place following the attack.
- Do not shower, bathe, or destroy any clothing you wore during the attack. Place all clothing in a paper bag; plastic bags may destroy critical evidence. Preservation of evidence is crucial for proof of a criminal offense.
- Go to a hospital emergency room for medical care.
- Make sure you are evaluated for the risk of pregnancy and venereal disease. (A medical examination is the only way to ensure you are not injured. It could provide valuable evidence if you decide to prosecute.)
- You should not be alone; Call someone to be with you.

It is also recommended that victims call the **24/7 Crisis Hotline of the Julie Valentine Center at (864) 467-3633**. Counselors are always available to help answer medical and emotional questions at any hour in complete confidence.

Reporting the rape to the police is up to the victim. However, it is essential to remember that reporting a rape is not the same as prosecuting a rape. Victims are strongly encouraged to call the police and report the rape. If the victim requests, college staff will assist the victim in notifying law enforcement authorities. When a victim needs additional counseling services beyond those identified below, college staff will assist in identifying off-campus counseling or mental health services.



Victims of sexual assault will often find it challenging to focus on things that do not seem important at the time. Collecting and preserving all evidence related to the crime is vital if you are a victim. Do not change clothing, bathe or shower or perform any hygienic measures since these actions may destroy valuable evidence needed in the investigation. Evidence gathered from the victim or the victim's clothing may help establish the perpetrator's identity, if unknown, and provide evidence supporting statements. Medical and crisis personnel will be ready to assist in a caring manner.

If you are a victim, please understand that collection of all clothing worn before, during, and after the assault is a must. Clothing worn before or during the assault often contains trace evidence and bodily fluids vital to investigators. Clothing worn after the assault may also have seminal fluid from the perpetrator that is still present after the assault.

While not recommended, a victim may not want to pursue either disciplinary action or criminal prosecution. However, the victim may still want to consider making a confidential report. With the victim's permission, a **Campus Security Authority (CSA)** ([page 41](#)) can file a report on the details of the incident without revealing the victim's identity. The purpose of the confidential report is to comply with the victim's wish to keep the matter confidential while taking steps to ensure the campus community's safety.

After reporting any sexual assaults, the victim has the right to request that Greenville Technical College take reasonable steps or actions to prevent unnecessary or unwanted contact or proximity with alleged assailants, including relocation within student housing or transfer of classes.

Victims will receive information about counseling, physical health, mental health, victim advocacy, legal assistance, and other available services.

Procedures Once Incident Has Been Reported

Upon learning of possible sexual violence involving an individual affiliated with Greenville Technical College, we will take immediate action to investigate or otherwise determine what happened. This action will occur regardless of whether or not the victim reports the incident to law enforcement. Such action may include, but is not limited to, speaking with the alleged victim, the alleged perpetrator, and other potential witnesses as appropriate and reviewing other evidence if available. If the college determines that the allegation is credible, we will take steps designed to promptly and effectively end the sexual violence or the threat of sexual violence, prevent its recurrence, and address its effects regardless of whether the alleged actions are subject to a criminal investigation.

Disciplinary Action and Sanctions

On-campus Title IX disciplinary procedures against students will follow **Title IX** processes and procedures at that time. We will conduct Title IX disciplinary procedures against employees in compliance with SC Technical College System [SBTCE Policies and Procedures](http://sctechsystem.com/faculty-and-staff/policies-and-procedures/index.html) (http://sctechsystem.com/faculty-and-staff/policies-and-procedures/index.html) Number 8-5-100 et seq. The Title IX team uses "preponderance of evidence" for the standard in deliberations. Title IX Coordinators receive annual training related to domestic violence, dating violence, sexual assault, and stalking, along with how-to's for conducting investigations and hearing process that protects the safety of victims and promotes accountability. The accuser and the accused are entitled to have others present during a disciplinary proceeding and receive the outcome of any campus disciplinary proceeding. The outcome of a disciplinary proceeding means only Greenville Technical College's final determination concerning the alleged sexual offense and any sanction imposed against the accused. Sanctions imposed following a final determination of any investigation or disciplinary proceeding, including rape, acquaintance rape, or other forcible or non-forcible sex offenses, may include a warning, probation, suspension, or dismissal.

Greenville Technical College prohibits retaliation by its officers, employees, students, or agents against a person who exercises their rights or responsibilities under any federal or state law provision, including Title IX and the Campus SaVE Act or this policy.

Assault Information for Women

What is Acquaintance/Date Rape?

Acquaintance/date rape is a sexual assault committed by someone the victim knows. It could be a friend, co-worker, classmate, date, and the like. Regardless of who the rapist is, this type of sexual assault can be more devastating because it destroys the victim's sense of trust. Acquaintance/date rape accounts for 66% of all sexual assaults. Some experts believe it has become an epidemic on college campuses.



Scope of the problem

- 2/3 of all sexual assaults are acquaintances or date rapes
- 1 in 4 women between the ages of 13 and 26 are victims of sexual assault or attempted sexual assault
- Over 66% of all sexual assault victims knew their attacker
- 1 in 12 men between the ages of 18 and 26 admitted to participating in an act that met the legal definition of rape or attempted rape (Koss, 1988)
- 1 in 4 men admitted to having used sexual coercion or aggression with women (Koss, 1988)

Why it occurs

Our society's cultural and social climate contributes to inappropriate attitudes regarding the roles of females and males. Those attitudes result in gender stereotyping, double standards, labeling, and peer pressure.



Attitudes and Myths

The following attitudes and myths can contribute to Acquaintance/Date Rape:

- Women are "supposed" to say no first so as not to give the impression of being easy
- Men are taught "No really means Yes"
- It's okay to force someone to have sex if the man has spent a lot of money on the date
- Women are taught to be passive
- Men are taught to be aggressive
- Often young men are taught to view sex as a conquest rather than a relationship
- Force/violence is a means to achieve whatever you want
- If she's wearing a "sexy" dress, she wants to have sex
- If a man believes a woman has "led him on," he has the right to force her to have sex

How could it happen?

Acquaintance/date rapes are planned and usually have some pattern to them. Often alcohol or other drugs are used to facilitate the opportunity for the plan to be completed. These are the typical stages that occur during an acquaintance sexual assault:

- *Intrusion* – the offender somehow violates the victim's space, such as staring, "accidental" touching, or uncomfortable conversation
- *Desensitization* – the victim becomes used to the intrusion, thinking, "he does not mean anything by this; it's just his personality"
- *Isolation* – the offender has to get the victim alone to commit the rape

What are date rape drugs?

These are drugs sometimes used to assist a sexual assault. Sexual assault is any sexual activity with which a person disagrees. It can include touching that is not okay, putting something into the vagina, sexual intercourse, rape, and attempted rape. These drugs are powerful and dangerous. They can be slipped into your drink when you are not looking. The drugs often have no color, smell, or taste, so you can't tell if you are drugged. The drugs can make you weak and confused — or even pass out — so you cannot refuse sex or defend yourself. If you are drugged, you might not remember what happened while you were drugged. Both females and males can be drugged.



The three most common date rape drugs are:

- **Rohypnol** (roh-HIP-nol). Rohypnol is the trade name for flunitrazepam (FLOO-neye-TRAZ-uh-pam). Abuse of two similar drugs appears to have replaced Rohypnol abuse in some parts of the United States. These are clonazepam (marketed as Klonopin in the U.S. and Rivotril in Mexico) and alprazolam (marketed as Xanax). Rohypnol is also known as Circles, Forget Pill, LA Rochas, Lunch Money, Mexican Valium, Mind Erasers, Poor Man's Quaalude, R-2, Rib, Roach, Roach-2, Roches, Roofies, Roopies, Rope, Rophies, Ruffies, Trip-and-Fall, and Whiteys.
- **GHB**, which is short for gamma hydroxybutyric (GAM-muh heye-DROX-ee-BYOO-tur-ihk) acid. GHB is also known as Bedtime Scoop, Cherry Meth, Easy Lay, Energy Drink, G, Gamma 10, Georgia Home Boy,

G-Juice, Gook, Goop, Great Hormones, Grievous Bodily Harm (GBH), Liquid E, Liquid Ecstasy, Liquid X, PM, Salt Water, Soap, Somatomax, and Vita-G.

- **Ketamine** (KEET-uh-meen) is also known as Black Hole, Bump, Cat Valium, Green, Jet, K, K-Hole, Kit Kat, Psychedelic Heroin, Purple, Special K, and Super Acid.

These drugs also are known as "club drugs" because they tend to be used at dance clubs, concerts, and "raves."

The term "date rape" is widely used. However, most experts prefer the term "drug-facilitated sexual assault." These drugs also help people commit crimes like robbery and physical assault. Victims include both men and women. The words "date rape" also can be misleading because the person who commits the crime might not be dating the victim. Instead, it could be an acquaintance or stranger.

What do the drugs look like?

Rohypnol comes as a pill that dissolves in liquids. Some are small, round, and white. Newer pills are oval and green-gray. When slipped into a drink, a dye in these new pills makes clear liquids turn bright blue, and dark drinks turn cloudy. However, this color change might be hard to see in a dark drink, like cola or dark beer, or in a dark room. Also, the pills with no dye are still available. Often the pills are ground into powder.



GHB has a few forms: a liquid with no odor or color, white powder, and in pill form. It might give your drink a slightly salty taste. Mixing it with a sweet drink, such as fruit juice, can mask the salty taste.

Ketamine comes as a liquid and a white powder.

What effects do these drugs have on the body?

Rohypnol takes effect within 30 minutes of being drugged and can last several hours. You might look and act like someone drunk, have trouble standing, speaking, or even pass out.

Rohypnol can cause these problems:

- Muscle relaxation or loss of muscle control
- Difficulty with motor movements
- Drunk feeling
- Problems talking
- Nausea
- Loss of memory
- Loss of consciousness (blackout)
- Confusion
- Problems seeing
- Dizziness
- Sleepiness
- Lower blood pressure
- Stomach problems
- Death

GHB takes effect in about 15 minutes and can last 3 or 4 hours. It is very potent: A minimal amount can have a significant effect. So it's easy to overdose on GHB. Most GHB comes from home or street "labs." So, you don't know what's in it or how it will affect you.

GHB can cause these problems:

- Relaxation
- Drowsiness
- Dizziness
- Nausea
- Problems seeing
- Loss of consciousness (blackout)
- Seizures
- Loss of memory
- Problems breathing
- Tremors
- Sweating
- Vomiting
- Slow heart rate
- Dream-like feeling
- Coma
- Death

Ketamine is very fast-acting. You might be aware of what is happening to you but unable to move. It also causes memory problems. Later, you might be unable to remember what happened while you were drugged.

Ketamine can cause these problems:

- Distorted perceptions of sight and sound
- Lost sense of time and identity
- Out-of-body experiences
- Dream-like feeling
- Feeling out of control
- Impaired motor function
- Problems breathing
- Aggressive or violent behavior
- Vomiting
- Memory problems
- Numbness
- Loss of coordination
- Convulsions
- Depression
- High blood pressure
- Slurred speech

These drugs are potent. They can affect you very quickly and without your knowledge. The length of time that the effects last varies. It depends on how much of the drug is taken and if mixed with other drugs or alcohol. Alcohol makes the drugs even more potent and can cause serious health problems — even death.

Are these drugs legal in the United States?

Some of these drugs are legal when lawfully used for medical purposes. Nevertheless, that does not mean they are safe. These drugs are powerful and can hurt you. Use only under a doctor's care and order.

Rohypnol is NOT legal in the United States. It is legal in Europe and Mexico, prescribed for sleep problems and to assist with anesthesia before surgery. It is brought into the United States illegally.

Ketamine is legal in the United States as an anesthetic. It is occasionally used on humans but mainly on animals. Ketamine stolen from Veterinary clinics is a significant source of the drug.

GHB is legal in the United States and used to treat narcolepsy (a sleep disorder). The distribution of GHB for this purpose is tightly restricted.



Is alcohol a date rape drug? What about other drugs?

Any drug that can affect judgment and behavior can put a person at risk for unwanted or risky sexual activity. Alcohol is one such drug. Alcohol is the drug most commonly used to help commit sexual assault. When a person drinks too much alcohol:

- It is harder to think clearly.
- It is harder to set limits and make good choices.
- It is harder to tell when a situation could be dangerous.
- It is harder to say "no" to sexual advances.
- It is harder to fight back if a sexual assault occurs.
- It is possible to blackout and have memory loss.

Offenders often use the club drug "ecstasy" (MDMA) to commit sexual assault. Slipping the drug into someone's drink without the person's knowledge is routine. Also, a person who willingly takes ecstasy is at greater risk of sexual assault. Ecstasy can make a person feel "lovey-dovey" towards others. It also can lower a person's ability to give reasoned consent. Once under the drug's influence, a person is less able to sense danger or resist a sexual assault.

Even if a victim of sexual assault drank alcohol or willingly took drugs, the victim is NOT at fault for being assaulted. A victim is not "asking for it" or the cause of the crime.

How can I protect myself from being a victim?

- Do not accept drinks from other people.
- Open containers yourself.
- Keep your drink with you always, even when you go to the bathroom.
- Do not share drinks.
- Do not drink from punch bowls or other communal, open containers. They may already have drugs in them.
- If someone offers to get you a drink, go with the person to order it. Watch the drink being poured and carry it yourself.
- If it tastes or smells strange, do not drink it. Sometimes, GHB tastes salty.
- Have a nondrinking friend with you to make sure nothing happens.
- If you realize you left a drink unattended, pour it out.
- If you feel drunk and have not drunk any alcohol — or feel like the effects of drinking alcohol are more intense than usual — get help immediately.



Are there ways to tell if I might have been drugged and sexually assaulted?

It is often hard to tell. Most victims do not remember being drugged or assaulted. The victim might not be aware of the attack until 8 or 12 hours after it occurred. These drugs also leave the body very quickly. Once a victim gets help, there might be no proof that drugs were involved in the attack. However, there are some signs that someone may have drugged you:

- You wake up feeling very hungover and disoriented or having no memory of a specific period.
- You remember having a drink but cannot recall anything after that.
- You find your clothes torn or not on right.
- You feel like you had sex but cannot remember it.

What should I do if I think I have been drugged and sexually assaulted?

Get medical care right away. Call **9-1-1** or have a trusted friend take you to a hospital emergency room. To preserve evidence of the sexual assault, do not urinate, douche, bathe, brush your teeth, wash your hands, change clothes, or eat or drink. The hospital will use a sexual assault kit to collect evidence. If you prefer, consult with a private doctor.

The hospital will assist you in contacting the police. Tell the police exactly what you remember. Be honest about all your activities. Remember, nothing you did — including drinking alcohol or doing drugs — can justify a sexual assault.

Ask the hospital to take a urine (pee) sample to test for date rape drugs. The drugs leave your system quickly. Rohypnol can be detected in the urine up to 72 hours after taking it. GHB leaves the body in 12 hours. Do not urinate before going to the hospital.

Do not pick up or clean up where you think the assault might have occurred. There could be evidence left behind — such as on a drinking glass or bed sheets.

Get counseling and treatment. Feelings of shame, guilt, fear and shock are normal. A counselor can help you work through these emotions and begin the healing process. Calling a crisis center or a hotline is a good place to start.

Effects of Acquaintance/Date Rape

- Denial – Many victims have difficulty identifying what happened to them as rape
- Shock – Inability to perceive what has happened as reality
- Behavioral Changes – Sleep disturbance, eating disorders, abusive behavior to self or others, depression
- Development of Phobias – Victims may experience fear of people, places, or things
- Lack of Confidence – Victims often question their ability to make decisions or have control over their life
- Loss of Trust – They can no longer trust anyone, especially males, and may doubt their own ability to judge people's character
- Guilt – Although the victim is not at fault, she may feel guilt and shame, finding some reason to blame herself

Prevention tips

- Communicate your thoughts clearly – Set personal limits. Communicate your wishes before you get into a sexual situation.
- Be Assertive – Demand respect. Do not apologize for expressing what you do and do not want.
- Do not depend on your date – Be prepared to provide your own transportation if necessary.
- Be Situationally Aware – Observe your surroundings. Look for things that make you feel uncomfortable. Avoid secluded areas.
- Trust your intuition – If it does not feel comfortable, get away quickly.
- Alcohol – Be aware that alcohol and drugs can affect your ability to be in control.

How can friends and family help?

Your presence can be a helpful, comforting influence. Please do not underestimate your importance to the victim.

- Be supportive. Believe the victim's story. Listen closely and try to understand her feelings.
- Be gentle and sensitive to her needs. Please do not blame her. Do not ask prying questions, but be available when she wants to talk.
- Understand what sexual assault is: an act of violence that looks sexual.

If you cannot do the above, steer her to someone else who can. Friends, family members, clergy, school counselors, and Rape Crisis are all excellent sources of support.

Sources: [Julie Valentine Center](https://www.julievalentinecenter.org/) (https://www.julievalentinecenter.org/)
[Womenshealth.gov](https://www.womenshealth.gov/a-z-topics/date-rape-drugs) (https://www.womenshealth.gov/a-z-topics/date-rape-drugs)



Male Sexual Assault

Men and boys are also the victims of sexual assault, sexual abuse, and rape crimes. In fact, in the U.S., over 10% of all victims are male.

Male survivors and others affected by sexual violence can receive free, confidential, live help through RAINN's National Sexual Assault Hotlines, 24/7. Call (800) 656-HOPE to be connected to a local rape crisis center in your area, or visit the National Sexual Assault Online Hotline to get live help in an instant messaging format.

Stereotypes and Myths

Some stereotypes and myths impact male survivors' ability to face their sexual assault. These include:

- Men are immune to victimization.
- Men should be able to fight off attacks.
- Men should not express emotion.
- Men enjoy all sex, so they must have enjoyed the assault.
- Male survivors are more likely to become sexual predators.

These stereotypes and myths can then lead to multiple results for male victims of sexual assault, including:

- Dramatic loss of self-esteem
- Diminished belief in their masculinity
- Self-blame
- Feelings of shame, guilt, anger
- Feelings of powerlessness, apprehension, withdrawal, and embarrassment
- Fears that they will not be able to protect and support their families
- Sexual difficulties
- Self-destructive behavior (drinking, drug use, aggression)
- Intimacy issues
- Questioning sexual identity

Barriers

Male survivors of sexual assault also may experience particular barriers to seeking support or services, either from friends and family or from organizations and institutions.

Support

- It can be difficult for men to seek help because of how others judge them.
- Responses from friends and family can be damaging or unsupportive.

Safety

- The perpetrator may have threatened the victim of a sexual assault or his family, causing the victim to keep silent.
- The perpetrator or others within an institution may pressure the victim to keep silent through implied and actual threats.

Privacy

- He may resist reporting the sexual assault because he must repeatedly repeat the story to police, prosecutors, and court.
- He may be unwilling to share details of the assault to protect his family from societal judgment.

Self-blame

- He may blame himself for the attack because he could not fight the aggressor off.
- He may think that the assault is not rape because he became sexually aroused during the attack (i.e., he had an erection or ejaculated). This arousal is a physiological reaction, NOT a sign of enjoyment.

Aftermath

Male survivors of sexual assault may experience a variety of effects that have an impact on their well-being.

Psychological

- Disrupted sense of self and concept of "reality"
- Profound anxiety, depression, fearfulness, and identity confusion
- Phobias related to the assault setting
- Hypochondriac symptoms (imaginary ailments)
- Paranoia and an obsessive fear of bodily harm
- Withdrawal from interpersonal contact and a heightened sense of alienation
- Stress-induced psycho-physiological reactions
- Psychological outcomes can be severe for men because men are socialized to believe that they are immune to sexual assault, and societal reactions to these assaults can be more isolating and stigmatizing.



Heterosexual Men

- He may experience “homosexual panic”- fearing that the assault will make him “become homosexual.”
- He may feel that he is less of a man.

Gay Men

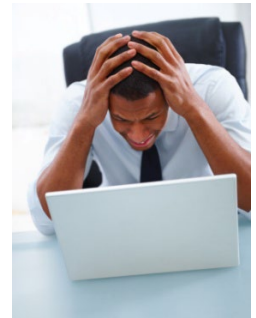
- He may feel he is being “punished” for his sexual orientation.
- He may fear that he was targeted as a member of the gay community. This fear may lead him to withdraw from that community.
- He may develop self-loathing related to his sexual orientation.

Relationships / Intimacy

- The assault may disrupt functional relationships.
- Others may react in a way that disrupts relationships, such as a lack of belief/support.
- The victim’s reactions to the assault may also disrupt relationships.

Emotional

- Anger about the assault can lead to hostility.
- Similarly, the overwhelming emotions of surviving a sexual assault can lead to emotional withdrawal.



Source: Rape, Abuse, and Incest National Network ([RAINN.org](https://www.rainn.org)) *Adapted*

Resources

Hospitals

[Bon Secours Greenville Emergency](https://www.bonsecours.com/locations/emergency-rooms/greenville)

(<https://www.bonsecours.com/locations/emergency-rooms/greenville>)

[Prisma Health Emergency Centers](https://www.prismahealth.org/services/emergency-services) (<https://www.prismahealth.org/services/emergency-services>)

[Spartanburg Regional Healthcare System Emergency](https://www.spartanburgregional.com/emergency)

(<https://www.spartanburgregional.com/emergency>)

Greenville Technical College

[Title IX at Greenville Technical College](https://www.gvltec.edu/Title-IX/) (<https://www.gvltec.edu/Title-IX/>)

Title IX Coordinator – Dr. Travis Gleaton (864) 236-6523 [x6523]

Interim Deputy Title IX Coordinator – Barbara Wilson (864) 236-6655 [x6655]

[SC Technical College System Policies and Procedures](http://sctechsystem.com/faculty-and-staff/policies-and-procedures/index.html)

(<http://sctechsystem.com/faculty-and-staff/policies-and-procedures/index.html>)

Victim Assistance and Information

[Julie Valentine Center](https://www.julievalentinecenter.org/) – Rape Crisis Hotline (24/7/365) – (864) 467-3633

(<https://www.julievalentinecenter.org/>)

[Date Rape Drugs](https://www.womenshealth.gov/a-z-topics/date-rape-drugs) (<https://www.womenshealth.gov/a-z-topics/date-rape-drugs>)

[National Center for Victims of Crime](https://victimssofcrime.org/) – (202) 467-8700 (<https://victimssofcrime.org/>)

[National Coalition Against Domestic Violence](https://ncadv.org) – (303) 839-1852 (<https://ncadv.org>)

[Rape, Abuse, and Incest National Network \(RAINN\)](https://www.rainn.org/) – (800) 656-HOPE (4673) (<https://www.rainn.org/>)

[South Carolina Coalition Against Domestic Violence and Sexual Assault](http://sccadvasa.org)

(803) 256-2900 (<http://sccadvasa.org>)

[Back to Table of Contents](#)

Title IX

Title IX of the Education Amendments of 1972 prohibits discrimination based on sex in education programs and activities in federally funded schools at all levels. It protects students, employees, applicants for admission and employment, and other persons from sex-based discrimination and harassment.

The college defines sexual discrimination/harassment as unwelcome, pervasive conduct of a sexual nature that creates a hostile environment. Possible violations of Title IX include but are not limited to unwelcome comments or gestures of a sexual nature; unwelcome sexual advances, including quid pro quo; stalking; and sexual violence. The Title IX process is used to combat these and other acts of sexual misconduct on campus.

Title IX is an administrative process available to students, faculty, guests, and visitors to the college who have experienced sexual misconduct. It is separate from any criminal proceeding that may result from a report of sexual misconduct. The details of the process are included in the college's Student Handbook. A summary of the Title IX program is included below.

To comply with the provisions of Title IX, the college has appointed a Title IX Coordinator and Deputy Title IX Coordinator to administer the process. These individuals are responsible for delivering training, developing related policies and procedures, and administering investigations of reports of sexual misconduct.

When a report is received, the Title IX Coordinator and/or Deputy Coordinator determine if the reported issue is a Title IX matter. If it is not a Title IX matter, the issue is referred to the appropriate office on campus for further investigation and resolution. If the issue falls under Title IX, it is fully investigated to determine if a policy violation occurred. If it is determined, based on a preponderance of the evidence gathered during the investigation, that a policy violation occurred, appropriate disciplinary action is taken.

If the individual responsible for the violation is an employee, the disciplinary process is handled through established Human Resources policies and procedures. If the accused is a student, the disciplinary action is determined by the Title IX Coordinator or Deputy Coordinator and is administered in collaboration with the Dean of Students Office.

Disciplinary action for employees can range from a verbal or written warning up to and including termination. Disciplinary action for students can range from an apology to expulsion from the college. For more information on Title IX policies and procedures, consult the Student Handbook.

On-campus and community resources are available to individuals affected by sexual misconduct. These resources are available below and included on the [college's Title IX webpage](http://www.gvltec.edu/Title-IX/) (<http://www.gvltec.edu/Title-IX/>).



Resources

[Center for Changing Our Campus Culture](http://changingourcampus.org/) (<http://changingourcampus.org/>)

[Greater Greenville Mental Health Center](http://greatergreenvillemhc.com/) (<http://greatergreenvillemhc.com/>)

Greenville - (864) 241-1040

Greer – (864) 879-2111

Simpsonville – (864) 963-3421

Greenville Technical College

[Title IX at Greenville Technical College](http://www.gvltec.edu/Title-IX/) (<http://www.gvltec.edu/Title-IX/>)

Title IX Coordinator – Dr. Travis Gleaton (864) 236-6523 [x6523]

Deputy Title IX Coordinator – Barbara Wilson (864) 236-6655 [x6655]

[GTC Counseling Services](http://www.gvltec.edu/student_resources/student_support/counseling/index.html) – (864) 250-8322 [x8322]

(http://www.gvltec.edu/student_resources/student_support/counseling/index.html)

[Greenville Technical College Police](http://gvltec.edu/police/) (<http://gvltec.edu/police/>)

GTC Police Emergency – *Dial 9-1-1*

GTC Police Office – (864) 250-8001 [x8001]

Dean of Students – Brett Gaffney (864) 250-8100 [x8100]

Associate Dean of Students – Dr. Travis Gleaton (864) 236-6523 [x6523]

[VP for Student Services](http://www.gvltec.edu/student_resources/student_support/counseling/index.html) – Dr. Matteel Knowles (864) 250-8177 [x8177]

[Julie Valentine Center](http://www.julievalentinecenter.org/) – Rape Crisis Hotline (24/7/365) – (864) 467-3633

(<http://www.julievalentinecenter.org/>)

[New Horizons Family Health Center](http://www.newhorizonfhs.org/) – (864) 729-8330 (<http://www.newhorizonfhs.org/>)

[Safe Harbor](https://safeharborsc.org/) (Domestic Violence) – (864) 567-3636 (<https://safeharborsc.org/>)

[SC Technical College System Policies and Procedures](http://sctechnology.com/faculty-and-staff/policies-and-procedures/index.html)

(<http://sctechnology.com/faculty-and-staff/policies-and-procedures/index.html>)

[Back to Table of Contents](#)

Victim's Rights

Crime Victim's Bill of Rights

Pursuant to the Constitution of the State of South Carolina, Article I, Section 24, as a victim of a crime, you have the right:

- To receive an initial offense incident report.
- To be treated with fairness, respect, and dignity and to be free from intimidation, harassment, or abuse.
- To be reasonably informed when the accused or convicted person is arrested, released from custody, or has escaped.
- To be informed of and be present at all criminal proceedings where final decisions on charges can be made or where the defendant has a right to be present.
- To be allowed to submit either a written or oral statement at all hearings affecting bond or bail.
- To be heard at any proceeding involving a post-arrest motion, plea, or sentencing.
- To be reasonably protected from the accused or persons acting on behalf of the accused throughout the criminal justice process.
- To confer with the prosecution before the trial or any disposition and be informed of the disposition.
- To have reasonable access after the conclusion of the criminal investigation to all documents relating to the crime against the victim before trial.
- To receive prompt and full restitution from the convicted person(s).
- To be informed of any proceedings when any post-conviction action or hearing is held and be present at any hearing.
- To obtain a reasonable disposition and prompt and final conclusion of the case.

Incident Reports

Crime victims may obtain a copy of the Incident Report free of charge, 48 hours after the incident (excluding weekends and holidays) from the GTC Police Department, Records Division, P.O. Box 5616, Mail Stop 1032, Greenville, SC 29606. GTC Police Records Division is located on the Barton Campus in Building 103/124B. Check-in at the ID Office, room 123). Phone: (864) 250-8001 [x8001] (Option 3); Fax: (864) 250-8516.

Victim's Compensation

The South Carolina Victim's Compensation Fund may provide reimbursement for the following crime-related expenses:

- Medical expenses
- Counseling (by a licensed counselor)
- Lost wages/support
- Funeral expense

Property loss, pain, and suffering cannot be compensated.

To be eligible to receive victim compensation, the applicant must:

- Have reported the crime to the proper law enforcement agency within 48 hours after the crime.
- File a claim within 180 days of the date of the crime.
- Fully cooperate with all law enforcement agencies.
- Not have engaged in illegal activity at the time of the crime.



Crime victims can get more information by contacting the [13th Circuit Solicitor's Victim Witness Program](http://www.greenvillemcc.org/solicitor/Victim_Witness.asp) at (864) 467-8647 (http://www.greenvillemcc.org/solicitor/Victim_Witness.asp) or the [Department of Crime Victim Compensation](http://sova.sc.gov/) at (800) 220-5370 (<http://sova.sc.gov/>).

*Law Enforcement Agencies:
Emergency Dial 9-1-1 except as noted*



Greenville County Sheriff's Office

(864) 271-5210

Greenville Police

(864) 271-5333

Greenville Technical College Police

(864) 250-8001



S.C. Highway Patrol

(864) 552-5009

*Roadside Emergencies (cell) Dial *HP (*47)*

Travelers Rest Police

(864) 834-9029

Community Resources:

East Greenville Summary Court (Magistrate) – (864) 467-4625

Compass of Carolina – (864) 467-3434; SC Toll-Free (800) 203-9692

Crime Stoppers – (864) 23-CRIME (232-7463)

CRISISline – (800) 273-TALK (8255) or (864) 271-8888

Julie Valentine Center Rape Crisis Hotline – (864) 467-3633

Safe Harbor Shelter for Abused Women - (800) 291-2139

Salvation Army of Greenville – (864) 235-4803

Shepherd's Gate (Miracle Hill) - (864) 268-5589

SC Department of Corrections Victim Services – (803) 896-1733; Toll-Free (800) 835-0304

SC Department of Social Services – Greenville (864) 467-7700; Greer (864) 848-5380

South Carolina Legal Services – (864) 679-3232; Toll-Free (800) 763-4825

SC Victim Assistance Network – Spartanburg (803) 750-1200 ext. *6456

Suicide Hotline – Dial **9-8-8** or (800) 273-TALK (8255)

13th Circuit Solicitor Family Court – (864) 467-5900

13th Circuit Solicitor Greenville – (864) 467-8647

United Way of Greenville County Helpline – Dial **2-1-1**

Bob Jones University Public Safety

(864) 242-5100 x5900

Emergency (864) 770-1311

Fountain Inn Police

(864) 862-4461

Furman University Police

(864) 294-2111



Greer Police

(864) 848-2151

Mauldin Police

(864) 289-8900

Simpsonville Police

(864) 967-9536



[Back to Table of Contents](#)

Weapons on Campus

The carrying of firearms or other weapons on Greenville Technical College properties, concealed or openly, is prohibited under the South Carolina Code of Law, except as provided in the code. The sections excerpted below are applicable as of the time of this publication:

SECTION 16-23-420. *Possession of firearm on school property; concealed weapons.*



A) It is unlawful for a person to possess a firearm of any kind on any premises or property owned, operated, or controlled by a private or public school, college, university, technical college, other post-secondary institution, or in any publicly owned building, without the express permission of the authorities in charge of the premises or property. The provisions of this subsection related to any premises or property owned, operated, or controlled by a private or public school, college, university, technical college, or other post-secondary institution, do not apply to a person who is authorized to carry a concealed weapon pursuant to Article 4, Chapter 31, Title 23 when the weapon remains inside an attended or locked motor vehicle and is secured in a closed glove compartment, closed console, closed trunk, or in a closed container secured by an integral fastener and transported in the luggage compartment of the vehicle.

(B) It is unlawful for a person to enter the premises or property described in subsection (A) and to display, brandish, or threaten others with a firearm.

(C) A person who violates the provisions of this section is guilty of a felony and, upon conviction, must be fined not more than five thousand dollars or imprisoned not more than five years, or both.

(D) This section does not apply to a guard, law enforcement officer, or member of the armed forces, or student of military science. A married student residing in an apartment provided by the private or public school whose presence with a weapon in or around a particular building is authorized by persons legally responsible for the security of the buildings is also exempted from the provisions of this section.

(E) For purposes of this section, the terms "premises" and "property" do not include state or locally owned or maintained roads, streets, or rights-of-way of them, running through or adjacent to premises or property owned, operated, or controlled by a private or public school, college, university, technical college, or other post-secondary institution, which are open full time to public vehicular traffic.

(F) This section does not apply to a person who is authorized to carry concealed weapons pursuant to Article 4, Chapter 31 of Title 23 when upon any premises, property, or building that is part of an interstate highway rest area facility.

HISTORY: 1962 Code Section 16-141.1; 1969 (56) 319; 1993 Act No. 184, Section 47; 1996 Act No. 464, Section 6; 2002 Act No. 274, Section 1, eff May 28, 2002; 2004 Act No. 294, Section 3, eff August 16, 2004; 2009 Act No. 32, Section 2, eff June 2, 2009.



SECTION 16-23-430. *Carrying weapon on school property; concealed weapons.*

(A) It shall be unlawful for any person, except state, county, or municipal law enforcement officers or personnel authorized by school officials, to carry on his person, while on any elementary or secondary school property, a knife, with a blade over two inches long, a blackjack, a metal pipe or pole, firearms, or any other type of weapon, device, or object which may be used to inflict bodily injury or death.

(B) This section does not apply to a person who is authorized to carry a concealed weapon pursuant to Article 4, Chapter 31, Title 23 when the weapon remains inside an attended or locked motor vehicle and is secured in a closed glove compartment, closed console, closed trunk, or in a closed container secured by an integral fastener and transported in the luggage compartment of the vehicle.

(C) A person who violates the provisions of this section is guilty of a felony and, upon conviction, must be fined not more than one thousand dollars or imprisoned not more than five years, or both. Any weapon or object used in violation of this section may be confiscated by the law enforcement division making the arrest.

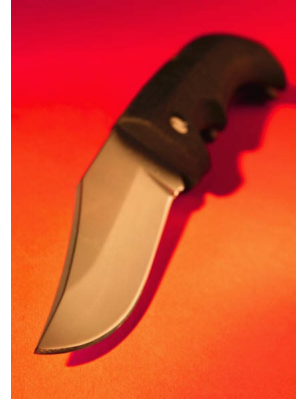
HISTORY: 1962 Code Section 16-141.2; 1971 (57) 535; 1990 Act No. 579, Section 1; 1993 Act No. 184, Section 48; 2009 Act No. 32, Section 1, eff June 2, 2009.

Resources

[South Carolina Code of Law](https://www.scstatehouse.gov/code/statmast.php) – (https://www.scstatehouse.gov/code/statmast.php)

[Title 16 – Chapter 23](https://www.scstatehouse.gov/code/t16c023.php) – (https://www.scstatehouse.gov/code/t16c023.php)

[Back to Table of Contents](#)





Section 2 Fire Safety Report

The **Higher Education Opportunity Act** (Public Law 110-315) became law in August 2008. All United States academic institutions must produce an annual fire safety report outlining fire safety practices, standards, and fire-related on-campus statistics for student housing facilities. The following public disclosure report details all information required by this law related to Greenville Technical College.

[Back to Table of Contents](#)

Campus Fire Safety Annual Compliance Report

General Statement of Front Porch Housing



[Front Porch Housing](https://frontporchhousing.org/) (<https://frontporchhousing.org/>) is owned by Fp Properties LLC, an entity of [Grace Church](https://gracechurchsc.org/) (<https://gracechurchsc.org/>), 2801 Pelham Road, Greenville, SC 29615. Front Porch Housing is located at 1433 Cleveland Street, Greenville, SC 29607. The complex was constructed in 2006 by Greenville Tech Foundation, Inc. on land owned by Greenville Technical College. The buildings and land were sold to Grace Church on May 6, 2022. Front Porch Housing is a two-year supportive housing program designed to help individuals and families in crisis build a firm foundation with the goals of continued sobriety, gainful employment, financial independence, and spiritual maturity.

At the time of sale, Grace Church and Greenville Technical College agreed that Building D would remain as Student Housing through Spring Semester 2023. Extension of this agreement, though not guaranteed, may occur. Unless an extension occurs, this agreement will end in May 2023. Building D is 4 stories with 34 garden-style 2- and 4-bedroom apartments. The building has a large multi-purpose room on the partial ground floor. The total number of bedrooms in the building is 116. The number of beds is variable based on bedroom occupancy.

All buildings in the complex, constructed in 2006, are equipped with integrated fire sprinklers and redundant fire alarm monitoring systems continuously monitored by a contracted fire alarm monitoring center. The Greenville City Fire Department provides fire service. GCFD has a Class I ISO rating.



The primary responding station is GCFD Station 3, located at 20 East Faris Road, 1.6 miles from Front Porch Housing. GCFD Station 5 provides backup response from their station located at 15 Waite Street, 2.9 miles from the complex.

Apartment Building Fire Safety Systems

Building	Fire Detection System (Smoke, Ion, Heat)	Fire Suppression System	Fire Extinguishers Present	Redundant Monitoring System	Fire Drills Each Semester (Minimum)
D	Yes	Full	Yes	Yes	2

Fire Prevention and Safety

Student Housing residents of Front Porch Housing must adhere to complex policies and city and state ordinances and statutes. Contact Front Porch Housing management for more information.

Misuse of Fire Prevention and Control Equipment

It is unlawful for anyone to tamper with, misuse, or destroy any fire prevention and control equipment. "Equipment" includes smoke detectors on the ceilings or walls of each apartment unit, fire alarm stations, evacuation notices, fire drill procedures, or fire extinguishers. If a smoke detector needs service, such as a new battery, contact Front Porch Housing as soon as possible.

Any resident abusing or misusing fire prevention and control equipment will be subject to prosecution. All apartments contain a fire evacuation sheet on the front entrance as required by law. Please do not remove this information.

False alarm

Individuals determined to have caused a false alarm will be subject to eviction and prosecution by the Greenville City Fire Marshal and/or the Greenville Police Department. The College and GTC Police do not have jurisdiction over Front Porch Housing and cannot offer disciplinary action in lieu of prosecution. Identified individuals may be charged all costs of false alarms.



Evacuation Procedures

In case of a fire, please sound the nearest fire alarm and evacuate the building. Evacuation procedures are as follows:

- Know the emergency routes from your room and hall.
- Check to see if your door is hot or has smoke around it. If so, stay in your room and wait to be evacuated by firefighters.
- Shut your door tightly when you leave. Exit your building and follow the directions of staff members.
- DO NOT remain in courtyards, access roads, or near buildings. Stay in the evacuation location until those in authority authorize your return.
- If you are trained in properly using a fire extinguisher and can do so without endangering yourself, please do so, but only after calling the Fire Department. Our

first concern is your safety. Do not attempt to extinguish a fire if it threatens your safety.

Reporting a Fire

Residents reporting a fire should **dial 9-1-1**.

Fire Log

The *Clery Act* requires educational institutions with Student Housing Facilities to maintain two [2] types of Fire Logs for these facilities:

- 60 Day Log
- Crime Logs for the 3 reporting years

Rather than a 60-day and 3-year log, Greenville Technical College

maintains an annual Fire Log on the [Greenville Technical College website](https://www.gvltec.edu/about_greenvilletech/police/crime-logs.html)

(https://www.gvltec.edu/about_greenvilletech/police/crime-logs.html) for the current year, previous year, and at minimum the three (3) year period covered by the current Clery Report, exceeding the requirement. GTC Police Records Division maintains the logs.



The Fire Log records any fire occurring in on-campus student housing. It includes information such as the nature, date, time, and general location of each fire. The Fire Log entry, or an addition to an entry, shall be made within two business days of receiving information.

- The Fire Log shall be open to public inspection during regular business hours from the GTC Police Records Division, Barton Campus, ET/103-124B.
- The current and historical logs dating back to 2019 are also available on the [GTC website](https://www.gvltec.edu/about_greenilletech/police/crime-logs.html) (https://www.gvltec.edu/about_greenilletech/police/crime-logs.html).
- Printed copies of the Fire Logs will be made available within two business days of a request in writing to the GTC Police Records Division.

Follow the procedures found on [pages 11-12](#) (**Annual Security Reports** under the subheading **Crime and Activity Logs**) to request an inspection of the Fire Logs.

Contact Information

Fire – Dial 9-1-1

[Greenville Fire Department Non-emergency](#) – (864) 467-4463

(<https://www.greenvillesc.gov/1161/Fire-Department>)

[Front Porch Housing](#) – (864) 298-0716 (<https://frontporchhousing.org/>)

[Back to Table of Contents](#)

Living Safely in Your Apartment

What you need to do if there is a fire:

- Get out of the apartment
- Once out – STAY OUT! Do not go back in for ANY reason
- Call 9-1-1 from a safe location
- Give the dispatcher as much accurate information as you can.
- Use your fire escape plan. Discuss a meeting place with your roommates in advance and meet there in case of fire
- Try to let neighbors know to get out
- Keep the roads and parking areas open
- If you cannot get out, use a cellular phone to stay in touch with 911 dispatchers, and shine a flashlight or wave a sheet out the window to alert firefighters that you are trapped
- Stay calm

Tips for living safely in Student Housing:

- Make sure you have smoke alarms that work
- Know where the fire extinguishers are located, both inside and outside the apartment
- Do not park in front of fire hydrants
- Have a fire escape plan, and practice it
 - Do not remove emergency information from your front door; it is required by law
 - Contact management if your emergency information is missing from your front door
 - Know at least two ways to get out of your apartment
 - Pick a meeting place outside the apartment building
 - Do not use elevators (they may take you right into the fire.)
- Do not run extension cords under carpets or from room-to-room
 - Extension cords can quickly overheat
 - Extension cords are for temporary use only
- Be aware of residents with disabilities in your building
 - If there is a fire, they may have extra difficulty getting out
 - You may be able to help them, or you can direct firefighters to their apartment

City of Phoenix Fire Department - Adapted

General Tips & Warnings:

- Never pick up a pan that is on fire. If you tip it, the fire will grab hold of whatever it falls onto and spread. If you do not have a lid ready, pour baking soda on the flames, but be careful never to use baking powder because it burns and will add fuel to the fire.
- Do not touch the lid you use to cover the fire for 20 to 30 minutes
- Do not use any powdered baking product (such as flour) other than baking soda when trying to extinguish a grease fire. It may be flammable, and rather than putting out the flames, it might fuel them instead.
- A fire extinguisher can spread flames in a kitchen fire as you try to extinguish them.
- Do not try dousing a kitchen fire with water under any circumstances. Water will not put out a kitchen fire.
- Never move a burning pan. Do not attempt to carry the flaming pan to the sink or outside. The pan will be too hot to transport. The contents are likely to spill when you try to move the pan. Water will only spread the flame. You will end up burning yourself and spreading the fire.



[Back to Table of Contents](#)

Statistics and Reports of On-Campus Student Housing Fires

Yearly Fire Damage Report

2021

Building	Total Fires	Total Number Fire-Related Injuries	Total Number Fire-Related Deaths	Key to Detail Below
A	0	N/A	N/A	N/A
B	0	N/A	N/A	N/A
C	0	N/A	N/A	N/A
D	0	N/A	N/A	N/A

Key	2021 Detail:
	No fires to report

2020

Building	Total Fires	Total Number Fire-Related Injuries	Total Number Fire-Related Deaths	Key to Detail Below
A	0	N/A	N/A	N/A
B	0	N/A	N/A	N/A
C	0	N/A	N/A	N/A
D	0	N/A	N/A	N/A

Key	2020 Detail:
	No fires to report

2019

Building	Total Fires	Total Number Fire-Related Injuries	Total Number Fire-Related Deaths	Key to Detail Below
A	0	N/A	N/A	N/A
B	0	N/A	N/A	N/A
C	0	N/A	N/A	N/A
D	0	N/A	N/A	N/A

Key	2019 Detail:
	No fires to report

[Back to Table of Contents](#)

Glossary of Terms

Fire — any instance of open flame or other burning in a place not intended to contain the burning or in an uncontrolled manner.

Fire drill — a supervised practice of a mandatory evacuation of a building for a fire.

Fire-related injury — any instance in which a person is injured requiring medical treatment as a result of a fire, including an injury sustained from a natural or accidental cause while involved in fire control, attempting rescue, or escaping from the dangers of the fire. The term person may include students, faculty, staff, visitors, firefighters, or others.

Fire-related death — any instance in which a person is killed as a result of a fire, including death resulting from a natural or accidental cause while involved in fire control, attempting rescue, or escaping from the dangers of a fire, or deaths that occur within 1 year of injuries sustained as a result of the fire.

Fire safety system — any mechanism or system related to the detection of a fire, the warning resulting from a fire, or the control of a fire, including

- Sprinklers or other fire extinguishing systems
- Fire detection devices
- Stand-alone smoke alarms
- Devices that alert one to the presence of a fire, such as horns, bells, or strobe lights
- Smoke-control and reduction mechanisms
- Fire doors and walls that reduce the spread of a fire

Value of Property Damage — the estimated value of the loss of the structure and contents, in terms of the replacement cost in like kind and quantity, including contents damaged by fire, related damages caused by smoke, water, and overhaul. However, it does not include indirect loss, such as business interruption.



[Back to Table of Contents](#)

Photo Credits

Cover: Greenville Technical College [J.D. Sutton, C.R. Blake, T.J. Foster, A.N. Walden, scpoliceriders.com] (all)
2: LeadsOnline
5: Greenville Technical College
6: Greenville Technical College Police (all)
9: Microsoft Office Clip Art (all)
10: pexels.com [Pixabay, royalty-free]
16: Greenville Technical College
20: Greenville Technical College
22: Greenville Technical College Police
24: Greenville Technical College
26: Greenville Technical College Police [T.J. Foster]
28: Greenville Technical College
30: Greenville Technical College Police
32: Greenville Technical College
34: Greenville Technical College Police [T.J. Foster]
35: Greenville Technical College (all)
36: Greenville Technical College
39: Microsoft Office Clip Art (all)
40: Microsoft Office Clip Art (Top); Greenville Technical College Police [J.D Sutton, C.R. Blake] (bottom)
41: Microsoft Office Clip Art (all)
43: Greenville Technical College Police [T.J. Foster]/Greenville Technical College Regroup
44: morguefile.com [DodgertonSkillhouse, royalty-free] (top); Greenville Technical College Police (bottom)
45: Greenville Technical College Police
46: Greenville Technical College (top); Microsoft Office Clip Art (bottom)
47: Greenville City Fire Department (top right); Berea Fire Department (middle right); South Greenville Fire District (bottom right)
48: Greenville Technical College Police [G. Payne (top); T.J. Foster (bottom)]
49: Microsoft Office Clip Art (all)
50: Greenville County Emergency Medical Service [GCEMS] (top); Greenville Technical College Police [T.J. Foster] (middle, bottom)
51: Microsoft Office Clip Art
52: Greenville Technical College Police [A.N. Walden] (top); Greenville Technical College Police [J.D. Sutton (middle, bottom)]
53: GTC Environmental Health and Safety/Department of Public Safety (all)
54: South Carolina Law Enforcement Division [SLED] (middle left); Greenville County Sheriff's Office (middle right)
55: Greenville Technical College
56: Microsoft Office Clip Art
57: Microsoft Office Clip Art (all)
58: Microsoft Office Clip Art
59: Microsoft Office Clip Art (all)
60: Microsoft Office Clip Art
61: Microsoft Office Clip Art
62: Microsoft Office Clip Art
63: Microsoft Office Clip Art (all)
64: Microsoft Office Clip Art
65: Microsoft Office Clip Art
66: Greenville Technical College
68: SC Office of the Attorney General, Department of Crime Victim Compensation
69: Greenville County Sheriff's Office (top); Greenville Police (middle right); Greenville Technical College Police [J.D. Sutton, C.R. Blake] (middle left); County of Greenville (bottom)
70: Microsoft Office Clip Art (top); Greenville Technical College Police [T.J. Foster] (bottom)
71: Microsoft Office Clip Art
73: RISE/Greenville Tech Foundation, Inc. (top); Greenville City Fire Department (middle)
74: Greenville Technical College Police [T.J. Foster] (top); Greenville City Fire Department (bottom)
76: Microsoft Office Clip Art
78: Microsoft Office Clip Art

All Microsoft Office Clip Art: Office 2007-2013 Enterprise Edition/Office Online; © 2006-2013 Microsoft Corporation, All Rights Reserved (Used under license, public domain)

morguefile.com: Licensed for free commercial use

pexels.com: Licensed for free commercial use

[Back to Table of Contents](#)



Empowering individuals. Changing lives. Reshaping Communities.

GTC Police

Headquarters: Barton Campus, Building 103, Suite 123/124
506 South Pleasantburg Drive
Greenville, South Carolina 29607

Mailing Address

Post Office Box 5616 Mailstop 1032
Greenville, South Carolina 29606-5616

Emergency Dial 9-1-1

Non-emergency contacts

Police Non-emergency – (864) 250-8001 (x8001)

Fax – (864) 250-8516 (x8516)

police@gvltec.edu

Greenville Technical College transforms students' lives and helps our community thrive by providing a world-class, affordable education to students and building an educated, engaged workforce committed to life-long learning.

College Switchboard

(864) 250-8000