

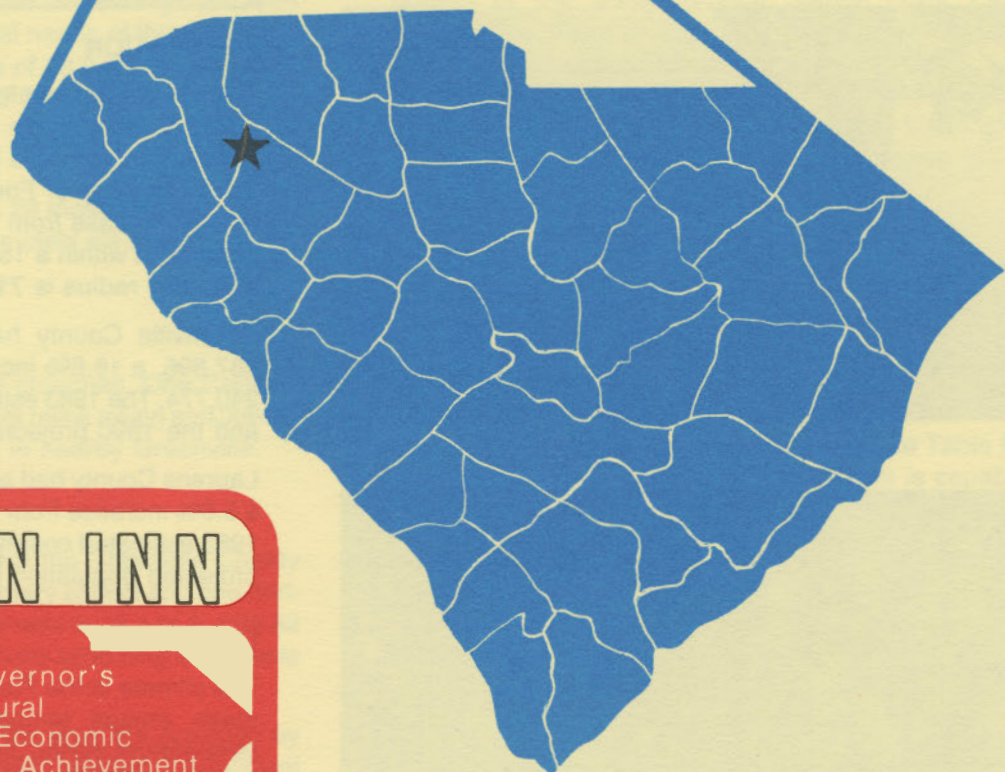
D4925
2.F58
1984
Copy 1

FOUNTAIN INN

south carolina

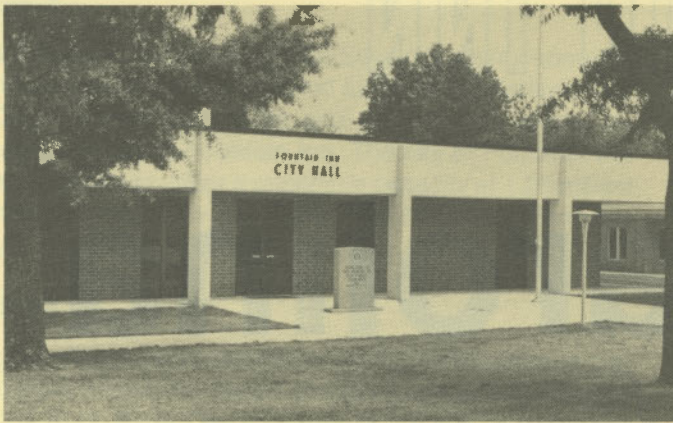


S. C. STATE LIBRARY
DEC 2 1 1984
STATE DOCUMENTS

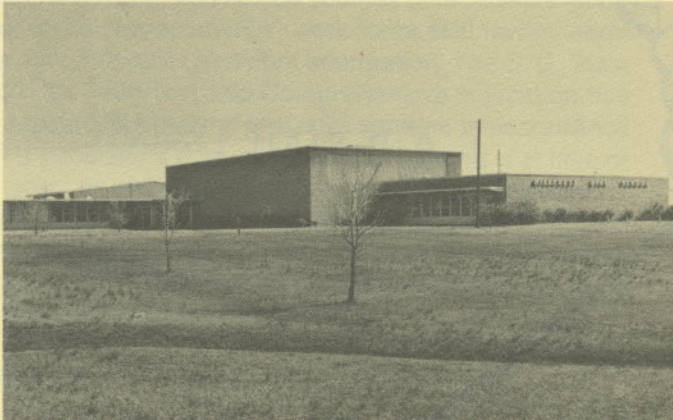


FOUNTAIN INN
IS
A GREAT TOWN

Governor's
Rural
Economic
Achievement
Trophy



Fountain Inn City Hall



Hillcrest High School



The Marquette Metal Products Co.



Cincinnati Milacron

LOCATION

As depicted on the cover, Fountain Inn is in the northwestern section of the state in Greenville and Laurens counties. Charleston, South Carolina's busiest port, is 197 miles southeast. Columbia is 87 miles southeast and Greenville is 13 miles north. Fountain Inn is 158 miles east of Atlanta; 709 miles south of New York; and 2,681 miles east of San Francisco.



POPULATION

The city of Fountain Inn is located in both Greenville and Laurens counties. In 1980, over 80% of the population resided in Greenville County. The 1980 census population of the city of Fountain Inn was 4,226. This was a 24.6% increase from the 1970 population of 3,391. The population within a 15-mile radius is 205,893, and within a 30-mile radius is 710,511.

Greenville County had a 1980 census population of 287,895, a 19.6% increase from the 1970 population of 240,774. The 1983 estimated county population is 297,148 and the 1990 projected population is 347,700.

Laurens County had a 1980 census population of 52,214, a 5.0% increase from the 1970 population of 49,713. The 1983 estimated county population is 53,128 and the 1990 projected population is 55,300.

CLIMATE

The climate in the Fountain Inn area is temperate with a mean annual temperature of 60.6°F. The average temperature during January is 42.3°F, while the average July temperature is 78.3°F. The average relative humidity daily is 78% at 1:00 a.m.; 82% at 7:00 a.m.; 54% 1:00 p.m.; 64% at 7:00 p.m.

The mean annual precipitation in the Fountain Inn area is 47.54 inches and the average growing season is 225 days. The elevation of Fountain Inn is 889 feet above sea level.

COMMUNICATIONS

The News and the *Piedmont*, published daily in nearby Greenville, circulate in the community, and weekly newspapers are published in Laurens and Mauldin. Radio station WFIS-AM is located in the Fountain Inn-Simpsonville area and nine additional AM/FM stations are located in Greenville. Television reception in the community is available from four stations, representing the three major networks and educational television. Telephone service in the community is provided by Southern Bell of Bell-South Corporation.

GOVERNMENT

The community has a mayor-council form of municipal government. The six city council members and the mayor are elected for four-year terms. Greenville County is governed locally by a council-administrator form of government. The 12 council members are elected to two-year terms.

POLICE AND FIRE

The Fountain Inn Police Department has 11 full-time police officers. The department operates four radio equipped patrol cars. The Fountain Inn Fire Department has 25 volunteer firemen who operate four pumper trucks and one tank truck. Fountain Inn's insurance rating is Class 7.

FINANCIAL INSTITUTIONS

Fountain Inn has three banks and one savings and loan association to serve the financial needs of the community. The banks have total assets of \$3.0 billion, while the savings and loan has assets of \$901 million.

HOTELS & MOTELS

Greenville, 13 miles away, has 28 motels with a total of over 2,600 rooms; four of these motels are within 10 miles of Fountain Inn.

CHURCHES

Fountain Inn has 20 Protestant churches. One Catholic church is located in Mauldin (eight miles away) and Jewish houses of worship are located in nearby Greenville.

EDUCATION

Fountain Inn, which is included in the Greenville County School System, has one elementary school and one middle school. The student/teacher ratio is 18.1 to 1, with 88 teachers and 1,594 students. Private schooling is available in nearby Greenville.

Higher education facilities for the area are provided by the Greenville Technical College, Holmes Theological Seminary, Bob Jones University, Furman University and a two-year branch of Clemson University at Greenville TEC. All are located at Greenville, approximately 13 miles away.

MEDICAL SERVICES

Medical services for the community are provided by the 56-bed Hillcrest Hospital. The Hillcrest Hospital is a division of the Greenville Hospital System which has over 1,000 beds. The community has five privately-practicing medical doctors and five privately-practicing dentists.

RECREATION AND CIVIC FACILITIES

Recreation facilities consist of three parks, a recreation center with a year round program, tennis courts and athletic fields. Two country clubs offer a variety of sports facilities. Collegiate spectator sports, concerts, theaters and most forms of recreation and entertainment are available in nearby Greenville.

POWER

Electric power is available to the community and surrounding areas from Duke Power Company and Laurens Electric Cooperative. Duke Power service is supplied to any industrial customer at utilization voltage from standard equipment without additional charge. Duke's industrial rate is among the lowest in the nation. Duke Power Company representatives are available to assist industry in its economic application of electricity and in analyzing their electrical needs and usages.

Laurens Electric Cooperative obtains its power supply from low-cost hydro-electric facilities and Saluda River Electric Cooperative. The Cooperatives in the northwest portion of the state, through Saluda River Electric Cooperative, have arranged for a reliable competitively-priced power supply for the present and future. High voltage interconnections between the Cooperatives and the power supply grid of the Eastern United States assure a continuous source of reliable electric power.

FUELS

Natural gas is supplied by the Fountain Inn Natural Gas System.

WATER

The municipal water supply is provided by the Greenville Water System which obtains water from the Table Rock and North Saluda reservoirs. The system is capable of supplying water at a maximum rate of 97,000,000 gallons per day, with an average daily demand of 42,000,000 gallons. Treated water storage consists of 320,000 gallons in ground storage.

Analysis of water supplied in the community:

Total solids	40 mg/L
Alkalinity	0 mg/L
Calcium	1 mg/L
Hardness	4 mg/L
Iron	.06 mg/L
pH	7.1

SEWER

The Western Carolina Regional Sewer Authority operates 38 waste treatment facilities and 52 pumping stations. The WCRSA serves Greenville and surrounding areas, including the city of Fountain Inn. The city of Fountain Inn has a contract to utilize a maximum capacity of 1.23 million gallons per day. The average flow is 790,000 gallons per day.

LABOR

Because labor information may change in this area, a current labor availability report prepared and kept up to date by the S. C. State Development Board will be furnished to prospective manufacturers at their request. The comprehensive report will include sources of recruitable labor, labor force characteristics, work force skill levels, earnings data and other pertinent information. The S. C. State Board for Technical and Comprehensive Education has the resources to recruit and train workers in accordance with a company's entry criteria. This training is at little or no cost to the employer. A lead-time schedule is developed to coordinate recruiting, testing, selecting, and training. This assures that persons will be able to move from training to their respective jobs at the time the plant is ready for initial production.

TRANSPORTATION

Fountain Inn is served by two interstate highways, I-85 and I-26, one United States highway and two South Carolina highways. The community is served by the Seaboard System Railroad. Fountain Inn is served by 48 authorized motor carriers, 35 of which have terminal facilities in Greenville.

Freight Delivery Times:

To:	By Rail:	By Truck:
Atlanta	2 days	1 day
Baltimore	3 days	3 days
Chicago	4 days	3 days
Houston	6 days	3 days
New York	4 days	4 days
St. Louis	4 days	4 days
San Francisco	6 days	5 days

MAJOR EMPLOYERS

Name	Product or Service	Employees
C & T Manufacturing Co.	Ladies' garments	104
Cincinnati Milacron	Machine tools	110
Dan River, Inc. (2 plants)	Cloth	739
The Marquette Metal Products Co.	Clutches	88
Vicellon — Div. Of Extracorporeal Med. Spec.	Plastic parts — kidney machines	64
Wilson Sporting Goods Co.	Tennis balls	312

The Greenville-Spartanburg Jetport, 12 miles from the community, offers regularly scheduled commercial airline service on Delta, Eastern, U.S. Air, Piedmont, Sunbird and Bankair. Private aircraft utilize the Greenville Downtown Airport, 17 miles away, which has paved and lighted runways of 4,000 and 5,390 feet. Services available at the two airports are flight instruction, charter, rentals, air taxi, major airframe and major powerplant repairs, RBn, 100LL and Jet A fuel, Unicom and Vortac.

FOREIGN TRADE ZONE

A Foreign Trade Zone is located in Summerville, South Carolina, 25 miles from the Port of Charleston and 172 miles from the community. The Foreign Trade Zone allows manufacturers to store, manufacture, or process goods without paying U.S. Customs duties or worrying about quota compliance. This Foreign Trade Zone is served by a multimode transportation network which provides excellent accessibility to market areas.

TAXES

The assessment on industrial property in South Carolina is 10.5% of the market value. New industry is granted a five-year moratorium on general county taxes (with the exception of school taxes). **Laurens County portion:** The city tax rate is \$5.35 per \$100 of assessed value. The county rate is \$11.64 per \$100 of assessed value. The effective city tax rate (tax liability per \$100 of market value) is \$.56. The effective county rate is \$1.22. **Greenville County portion:** The city tax rate is \$5.35 per \$100 of assessed value. The county rate is \$13.02 per \$100 of assessed value. The effective city tax rate is \$.56. The effective county rate is \$1.37. The State has no tax on a manufacturer's inventories, goods-in-process, raw materials or finished goods. Treatment facilities or equipment of manufacturing plants which control water or air pollution are exempt from all property taxation.

INDUSTRIAL SITES

Industrial sites are available in Fountain Inn with a wide range of geographic and topographic features. In all probability, a site that will meet the needs of most industries' requirements has been identified, catalogued, and entered into the State Development Board's Computerized Site Selection System. Detailed site information is available and will be furnished upon request.

For Additional Information Contact:

SOUTH CAROLINA STATE DEVELOPMENT BOARD
P.O. Box 927, Columbia, South Carolina 29202
(803) 758-3145

