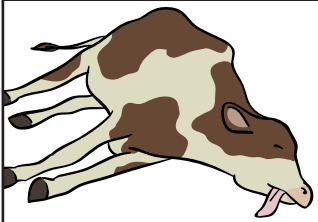
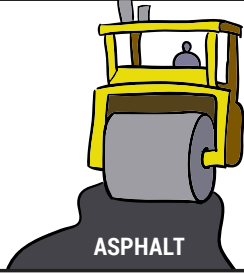


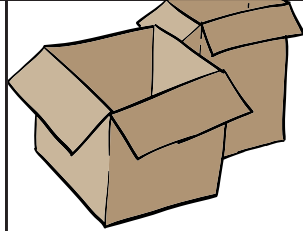
IT IS AGAINST THE LAW TO OPEN BURN
THESE MATERIALS:



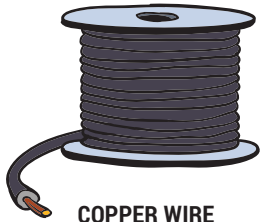
DEAD ANIMALS



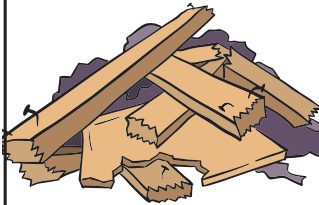
ASPHALT



CARDBOARD



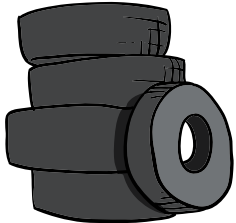
COPPER WIRE



DEMOLITION DEBRIS



HOUSEHOLD CHEMICALS



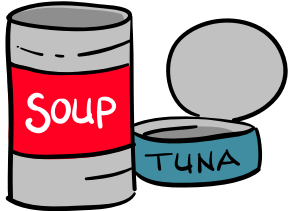
TIRES



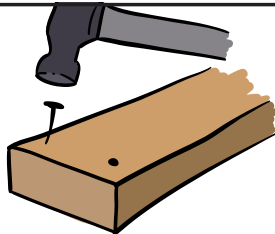
PAINT



PAPER



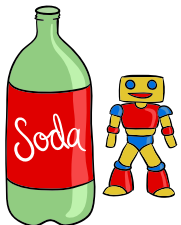
METAL



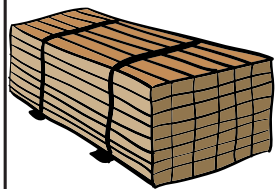
CONSTRUCTION DEBRIS



PETROLEUM



PLASTICS



TREATED WOOD



CR-010813 11/16

LEARN BEFORE YOU BURN



Open Burning

Know the Facts. Know the Laws.

Know the Risks.

www.scdhec.gov/OpenBurning

OPEN BURNING

Open burning is the burning of any material in an open fire or an outdoor container.

Burning trash is illegal in South Carolina. Trash may contain toxic chemicals, and those chemicals are released into the air when they are burned in an open fire.

Smoke and toxic chemicals from open burning pollute the air and can cause health problems for children and adults. These problems can be worse for people with reduced lung function such as asthma.

Small sticks, leaves, grass clippings, and kitchen vegetable waste make great mulch and compost for your garden. Larger stumps and limbs may be collected and used by your county government to produce mulch. Most counties offer mulch either free of charge or for a small cost.

State law requires that you notify the S.C. Forestry Commission before you burn certain vegetative materials.

- If you plan to burn residential yard debris within city limits, contact your local government for local burn ordinances.
- If you plan to burn residential yard debris outside city or town limits, you should call a toll-free number for the county in which you live. A list of these numbers can be found on the internet at www.state.sc.us/forest/fyard.htm.
- If you plan to burn next to woods, brush or grassland call the Forestry Commission at (800) 777-3473 before burning vegetative materials from land clearing or right of way maintenance. For more information, visit www.state.sc.us/forest/fireburn.htm.

Remember, even though you may have notified the Forestry Commission, you must still follow DHEC's regulations for open burning.

If you need to report open burning in your neighborhood, please call your Regional DHEC EQC Office. The numbers can be found at www.scdhec.gov/HomeAndEnvironment/DHECLocations.

For more information on open burning visit www.scdhec.gov/OpenBurning.

IN SOUTH CAROLINA

It's against the law to burn:

- Household garbage and trash
- Paper and cardboard (paper products)
- Petroleum products such as motor and waste heating oils
- Construction debris, demolition debris, or other building materials such as roofing materials, shingles and tar, insulation and duct work
- Tires and other rubber products
- Treated wood or lumber
- Asphalt (asphalt concrete) or tar
- Plastics such as bags, straws, utensils, lids, bottles, cups and toys
- Paints
- Household and farm chemicals
- Metal, such as steel or tin cans or containers
- Copper or electrical wire/cable
- Dead animals.

REDUCE, REUSE, RECYCLE

Here are some clean, easy ways to get rid of garbage:

- Mulch or compost yard waste
- Recycle newspapers, magazines, cardboard, cans, plastics and glass
- Recycle used oil at your local recycling center
- Donate items to a local charity or thrift store.

