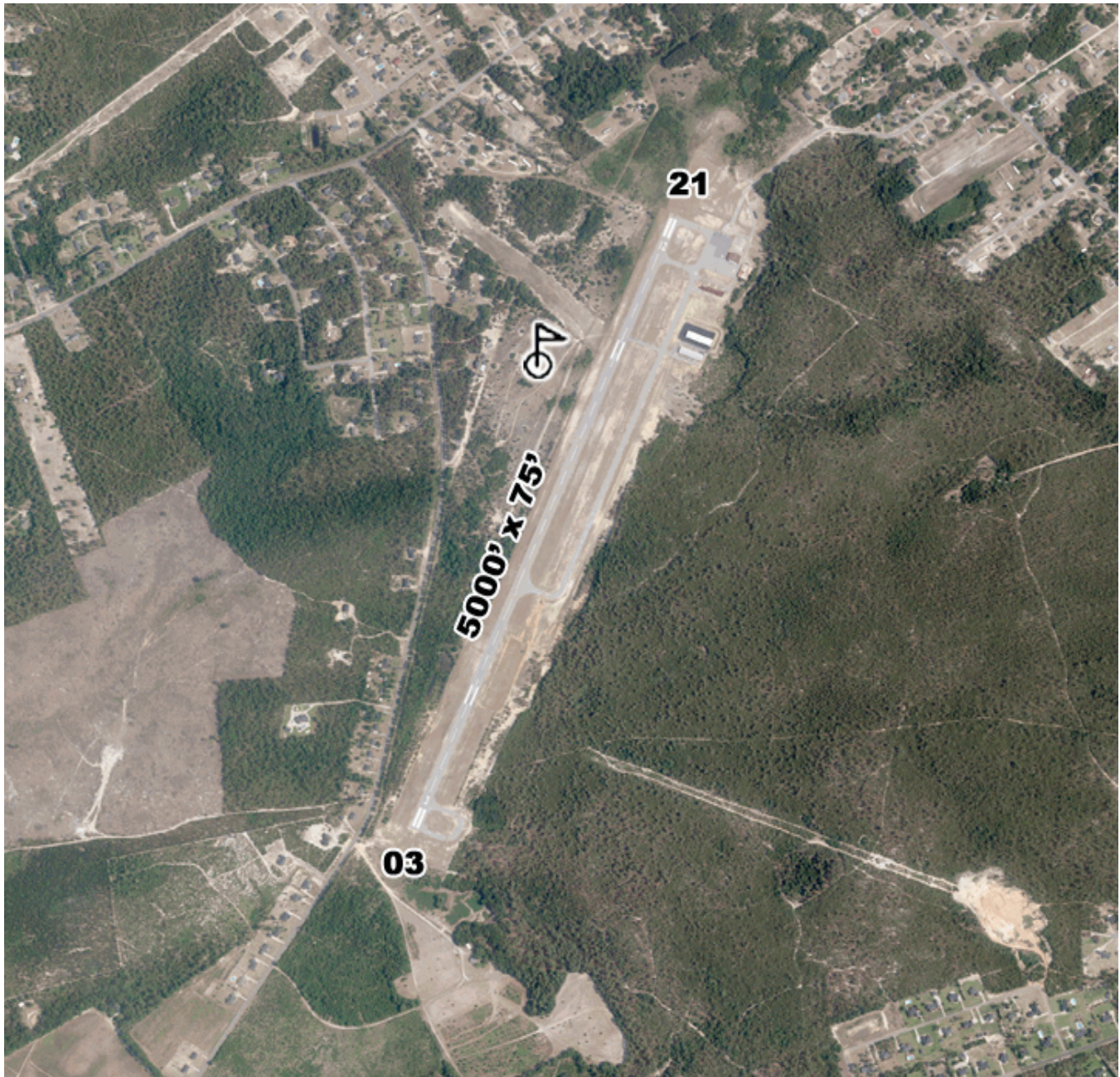




# SOUTH CAROLINA AIRPORTS SYSTEM PLAN

HARTSVILLE RGNL - HVS  
HARTSVILLE, SOUTH CAROLINA

Data Cycle 02/13/2018  
Photo Date 2005



Governing Body  
ARPT ADVISORY BOARD

Manager Hemming Hemmingsen  
Address 1083 HARTSVILLE AIRPORT RD.  
City HARTSVILLE, SC 29550  
Phone (843) 383-1088  
E-mail  
Owner CITY OF HARTSVILLE  
Address PO BOX 1230  
City HARTSVILLE, SC 29550  
Phone 843-383-3007





State Classification III – Business/Recreation (SC-III): Generally located in rural localities these airports serve small business and recreational aircraft. These airports do not typically serve multi-jurisdictional service areas but are generally confined to the communities in which they reside, or located near another airport whose service area is multi-jurisdictional. The SC Airports System Plan has determined that these airports should have runways that are a minimum of 3,600 feet x 75 feet with Airport reference Code (ARC) designations of B-I or B-II. The airport's economic impact to the state is within a range of \$250,000 to \$2 million as defined in the South Carolina Economic Impact of Aviation (May 2006).<sup>1</sup> These airports generally offer the full range of fuels and most aviation services. They have a non-precision approach and are also forecasted to have a growing population of aircraft and annual operations. A future airport profile consists of 5% to 20% of corporate and business use but a higher percentage of recreational use. The airport is not constrained by surrounding incompatible land uses or environmentally sensitive areas, and has adequate expansion capability not only for runways and taxiways but for support facilities as well. Business/Recreation airports should have approach minima of no higher than 400-1 mile.

All airport design standards for Classification III airports shall be based on the FAA Airport Reference Code (ARC) B-I or B-II with the following additions:

- \* Shall have an Airport Layout Plan approved by SCAC,
- \* Runway length shall be 3,600 feet,
- \* Runway width shall be 75 feet,
- \* Runway strength shall be 30,000 pounds dual wheel load,
- \* Runways shall have unobstructed approaches in accordance with FAA AC 150/5300-13,
- \* Airport shall attempt to achieve RNAV (GPS) LNAV instrument approach minimums on the primary Runway of 400 feet and 1 mile,
- \* Runway to taxiway centerline distance shall be 300 feet,
- \* Runway lighting shall consist of Medium Intensity Runway Lights, 2-Box Precision Approach Path Indicator (PAPI), Runway End Identifier Lights (REILS).

<sup>1</sup> Wilbur Smith Associates in association with EDR Group and Franks and Associates (May 2006). South Carolina Economic Impact of Aviation. Prepared for The South Carolina Aeronautics Commission.



# SOUTH CAROLINA AIRPORTS SYSTEM PLAN

HARTSVILLE RGNL - HVS

HARTSVILLE, SOUTH CAROLINA

## Airport Operations and Based Aircraft Forecasts

Year	ITINERANT OPERATIONS					LOCAL OPERATIONS			Total Ops	IFR Ops	Based Aircraft
	Air	Comm	General	Military	ITIN	General	Military	Local			
	Carrier	Air Taxi	Aviation	Ops	Totals	Aviation	Ops	Totals			
2009	0	0	2,700	300	3,000	3,000	0	3,000	6,000	475	15
2014	0	0	2,842	316	3,158	4,400	0	4,400	7,558	500	22
2019	0	0	2,842	316	3,158	4,200	0	4,200	7,358	500	21
2029	0	0	2,956	328	3,284	3,800	0	3,800	7,084	520	19

[Hyper link to Airport Operations \(operations link N/A\)](#)

Base Aircraft for 2017		Annual IFR Flight for 2017		Piston	Turbine
Single Engine	17	0	Single Engine	0	0
Multi Engines	0	0	Multi Engines	0	0
Helicopter	0	0	Helicopter	0	0
Jet	0	0	Jet		
Military	0	0	Unknown		
<b>Base Totals</b>	<b>17</b>	<b>0</b>	<b>IFR Totals</b>		

[Hyper Link to IFR details](#)



# SOUTH CAROLINA AIRPORTS SYSTEM PLAN

HARTSVILLE RGNL - HVS

HARTSVILLE, SOUTH CAROLINA

## Airport Profile

Elevation	364.00' MSL	Latitude:	34-24-11.1000N
Lighting Schedule	SEE RMK	Longitude:	080-07-09.2000W
Magnetic Var	08°W		

## Runway Information

ID	Length	Width	Surface	VGIS	REILS	Edge Lights	Approach Lights	Traffic Pattern
03/21	5000	75	ASPH-F	P2L/P2L	None	MED	None	03 - RH

## Gross Wheel Weight

ID	SW	DW	DTW	DDTW	Surface
03/21	16.0	25.5			ASPH-F

## NAVAIDS

ID	Type	FREQ	Direct/Distant
CTF	VOR/DME	108.20	r155° 16.7 NM to fld
HVS	NDB	341	at fld

## Communications

UNICOM		RCO	ATIS	ATC		WEATHER	
FREQ	CTAF	FREQ	FREQ	FREQ	ID	FREQ	PHONE
122.800	122.800			125.4	SSC	118.225	(843) 339-9625

[Hyperlink to airport drawing diagram](#)

[Hyperlink to airport economic impact](#)



# SOUTH CAROLINA AIRPORTS SYSTEM PLAN

## Capital Improvement Program

Project Description	Project Cost	Federal Share	Non-Primary Entitlements	Discretionary	State	Local
<b>2016</b>						
Parial Parallel Taxiway Paving & Lighting (Design + Construction)	\$566,000 95%	\$537,700	\$150,000	\$387,700	\$14,150 2.5%	\$14,150 2.5%
<b>Totals for 2016</b>	<b>\$566,000</b>	<b>\$537,700</b>	<b>\$150,000</b>	<b>\$387,700</b>	<b>\$14,150</b>	<b>\$14,150</b>
<b>2017</b>						
Perimeter Security Fence (Design + Construction)	\$250,000 95%	\$237,500	\$150,000	\$87,500	\$6,250 2.5%	\$6,250 2.5%
<b>Totals for 2017</b>	<b>\$250,000</b>	<b>\$237,500</b>	<b>\$150,000</b>	<b>\$87,500</b>	<b>\$6,250</b>	<b>\$6,250</b>
<b>2018</b>						
Apron Rehabilitation and Expansion (Design + Construction)	\$675,000 95%	\$641,250	\$150,000	\$491,250	\$16,875 2.5%	\$16,875 2.5%
New Hangar (Design + Construction)	\$700,000 95%	\$665,000	\$0	\$665,000	\$17,500 2.5%	\$17,500 2.5%
<b>Totals for 2018</b>	<b>\$1,375,000</b>	<b>\$1,306,250</b>	<b>\$150,000</b>	<b>\$1,156,250</b>	<b>\$34,375</b>	<b>\$34,375</b>



# SOUTH CAROLINA AIRPORTS SYSTEM PLAN

## Demographic and Business Profile Report

(Data provided for 20 Mile Drive Distance from Airport)

### Total Population and Growth Rate

2000 Total Population	67,165
2008 Total Population	67,474
2013 Total Population	67,583
2000-2008 Annual Growth Rate	0.1%
2008-2013 Annual Growth Rate	0.0%

### Per Capita Income

2000 Per Capita Income	\$15,805
2008 Per Capita Income	\$20,061
2013 Per Capita Income	\$23,118

### Total Households

2000 Total Households	25,888
2008 Total Households	26,256
2013 Total Households	26,501

### Median Household Income

2000 Median HH Income	\$30,101
2008 Median HH Income	\$37,606
2013 Median HH Income	\$43,442

### Median Age

2000 Median Age	36.3
2008 Median Age	38.4
2013 Median Age	40.0

### 2008 Population by Age

Population 0 - 14	20.1%
Population 15 - 24	12.7%
Population 25 - 54	41.1%
Population 55 +	24.4%
Population 18+	75.8%
Population 85+	1.7%

### 2008 Civilian Population 16+ by Employment Status

Employed Civilian Pop 16+	27,241
Unemployed Civilian Pop 16+	3,597
Employment Rate	88.3%
Unemployment Rate	11.7%

### 2008 Employed Civilian Population by Industry

Agriculture/Mining	2.0%
Construction	6.6%
Manufacturing	23.1%
Retail/Wholesale Trade	14.2%
Transportation/Utilities	5.4%
Information	1.0%
Finance/Insurance/Real Estate	6.2%
Professional/Technical	2.2%
Management	0.1%
Accom/Food/Other Services	10.4%
Educational Services	8.8%
Health Care/Social Assistance	11.1%
Public Administration	4.1%
Admin/Support/Waste Svcs.	3.9%
Arts/Entertainment	1.1%

### 2008 Educational Attainment by Degree

<9th Grade	10.1%
Some High School	16.1%
High School Graduate	36.4%
Some College	16.0%
Associate Degree	6.7%
Bachelor's Degree	10.3%
Graduate/Professional Degree	4.6%

### 2008 Employed Civilian Population by Occupation

Management (incl. Farm Mgr.)	6.3%
Professional	10.6%
Sales	10.4%
Office/Administrative Support	12.7%
Life/Physical/Soc. Science/Soc. Svcs.	1.7%
Entertainment/Sports	1.1%
Health Care Pract/Support	10.1%
Protective Services	2.4%
Food Preparation/Serving	4.7%
Maintenance/Installation/Repair	10.3%
Construction/Extraction Services	5.6%
Production	14.4%
Transportation/Moving	8.9%
Farming/Fishing/Forestry	0.7%

### Top Businesses by Number of Employees within 20 Mile Drive Distance.

Company Name	Number of Employees
Darlington County One Stop	2,023
Carolina Pines Regional Med	700
Dixie Products	600
Nucor Steel	455
Progress Energy Robinson Plant	450
A O Smith Water Products	400
Bba Fiberweb	400
Mar Mac Mfg Co Inc	350
Wal-Mart Supercenter	350
Mac'S Pride	300
Manheim Darlington Auto Auctn	300
Stingray Boat	215
Rbc Bearings	205
Chesterfield Lumber Co	200
Darlington Veneer Co Inc	165
Caresouth Carolina	150
Citi Trends	150
South Atlantic Cannery	125
Kentco Heating & Cooling	125
Lee County Disabilities & Spec	120
Pine Needle Express	112
Gibbs Activity Ctr	110
Resource Industries	107
Rexam Beverage Can Americas	107
Ezzel Trucking	100
Estes Express Lines	94
R E Goodson Construction Co	80
Ampak Inc	77
Mc Bee Mfg Co	75
Craig Industries	75
Agrium Us Inc	70
Bi-Lo	68
Mar-Mac Wire Inc	66
Machinery Manufacturing	60
Anderson Brass Co	60

Source: ESRI. 2008 Estimates and Projections. 2000 Census. 2008 InfoUSA Business Data



# SOUTH CAROLINA AIRPORTS SYSTEM PLAN

## 20 Mile Drive Distance Map

