



Cotton/Soybean Insect Newsletter

Volume 7, Issue #8

Edisto Research & Education Center in Blackville, SC

12 July 2012

Pest Patrol Hotline

The information contained herein each week is available via a toll-free hotline. I will update the short message weekly for at least as long as the newsletter runs. Call the free number (877) 285-8525 and select the messages you would like to hear. Select #1 for updates from the Southern Region. Select #3 for the Southeast, and then select #1 to hear my message. Text alerts are also available. The hotline is sponsored by Syngenta.

News from Above the Lakes

Jacob Stokes, county agent covering Clarendon, Florence, and Williamsburg Counties, reported “very little insect pressure here. Limited kudzu bugs concentrated on the outside rows. No plant bugs in cotton and very few aphids.” David DeWitt, county agent covering Lee, Kershaw, and Sumter Counties, reported that he is “not seeing many kudzu bugs...they are scattered around fields but not seeing loaded up on stalks as in earlier beans. These are group fives that have just begun to bloom and have not been sprayed with insecticide. Cotton looks good...rains have been a blessing. Have a few farmers beginning to spray...nothing heavy...some stink bugs in upper Lee County being sprayed with Bidrin this morning. Early cotton setting bolls...most blooming.”

News from Below the Lakes

A local consultant reported yesterday that he had a soybean field near Blackville, SC, that was completely infested with adult kudzu bugs. He said that the population increase happened recently and that the field was already sprayed for them weeks ago. So, we are seeing the new generation coming out of kudzu now. Be on the lookout for populations of adults that can quickly infest fields. Another local consultant also reported that he has already triggered treatment of some cotton fields for stink bugs. He was in the 3rd week of bloom and exceeded our dynamic boll-injury treatment threshold. He is also seeing building populations of spider mites.

News from the Piedmont/Upstate

Chris Talley, county agent covering Anderson, Pickens, and Spartanburg Counties, reported that he has “kudzu bugs for sale if anyone is interested...no other insect pressure is being seen on beans...the cotton I’ve looked at up here looks good as well.” Jay Crouch, county agent covering Saluda, Newberry, Laurens, Fairfield, and Edgefield Counties, reported that the rains have helped and that the “cotton situation [concerning insects is] still quiet. Immature kudzu bug numbers building in some fields, beginning to treat as needed.” Cory Heaton, county agent covering Chester, York, and Lancaster Counties, reported that he is “starting to see kudzu bugs spreading across early beans, with plenty of eggs...starting to see nymphs.”

The Clemson University Cooperative Extension Service offers its programs to people of all ages, regardless of race, color, sex, religion, national origin, disability, political beliefs, sexual orientation, marital or family status and is an equal opportunity employer. Clemson University Cooperating with U.S. Department of Agriculture, South Carolina Counties, Extension Service, Clemson, South Carolina.

Public Service Activities

The mention of any commercial product in this publication does not imply its endorsement by Clemson University over other products not named, nor does the omission imply that they are not satisfactory.



Cotton Situation

As of 9 July 2012, the USDA NASS South Carolina Statistical Office had the cotton crop at about 62% squaring, close to where we were last year at 65%, but ahead of the 5-yr average of 56%. The crop has set bolls on about 10% of our acres, compared with 30% last year and 11% for the 5-yr average. Conditions of the cotton crop are described as 4% excellent, 54% good, 36% fair, 5% poor, and 1% very poor. Soil moisture levels in the state have improved with the recent rains this week, but they were described last week as 18% very short, 52% short, and 29% adequate, and 1% surplus. These are observed/perceived state-wide averages.

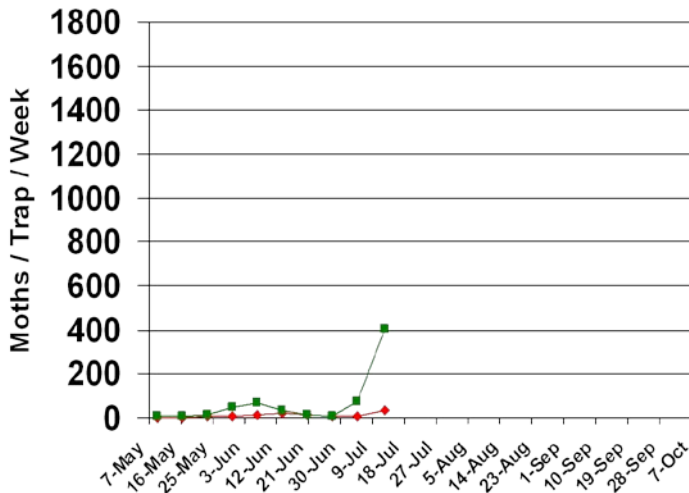
Bollworm & Tobacco Budworm



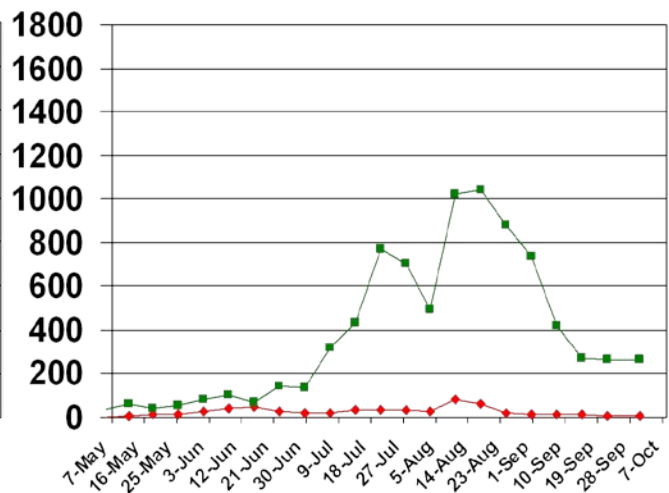
Captures of bollworm (BW) and tobacco budworm (TBW) moths in pheromone traps at EREC this season are shown below, as are the captures from 2011 for reference. **Bollworm captures have increased significantly.** Tobacco budworm continues to be important for our soybean acres and for a very limited number of non-Bt-cotton acres. I provide these data as a measure of moth activity in our local area where I use these data as an indication of moth presence and activity near my research plots. The numbers are not necessarily representative of the species throughout the state.



Pheromone Trap Capture SC - 2012



Pheromone Trap Capture SC - 2011



Soybean Situation

As of 9 July 2012, the USDA NASS South Carolina Statistical Office had our progress at 98% planted, close to the 5-yr average of 99% and very close to where we were last year at 97%. About 96% of planted soybeans have emerged, ahead of where we were last year at 87% and just ahead of the 5-yr average of 92%. Conditions of the soybean crop are described as 1% excellent, 42% good, 45% fair, 11% poor, and 1% very poor. These are observed/perceived state-wide averages.

The Clemson University Cooperative Extension Service offers its programs to people of all ages, regardless of race, color, sex, religion, national origin, disability, political beliefs, sexual orientation, marital or family status and is an equal opportunity employer. Clemson University Cooperating with U.S. Department of Agriculture, South Carolina Counties, Extension Service, Clemson, South Carolina.

Public Service Activities

The mention of any commercial product in this publication does not imply its endorsement by Clemson University over other products not named, nor does the omission imply that they are not satisfactory.

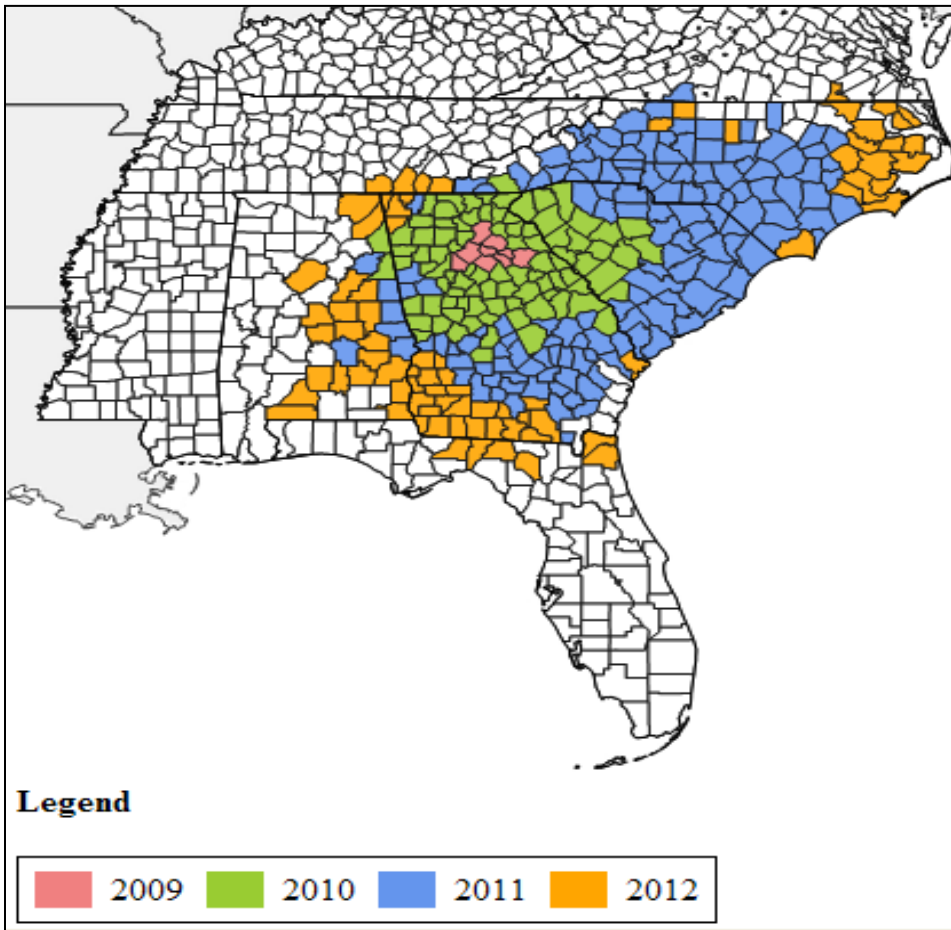


Kudzu Bug/Bean Plataspid

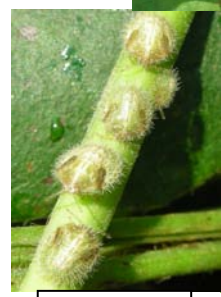
I recorded a presentation on the kudzu bug that can be viewed at the Plant Management Network (PMN) website. It has launched the new presentation in its Focus on Soybean webcast resource. The title is “Observations and Biology of Kudzu Bugs and Their Management in Southeastern Soybeans”. This 12-minute presentation is open access through October 31, 2012. Viewers can also opt to see a four-minute executive summary version of this presentation. This shorter executive summary version is permanently open access courtesy of the United Soybean Board. View these two versions of the presentation at:

<http://www.plantmanagementnetwork.org/edcenter/seminars/soybean/kudzu>.

Here is the latest map of the distribution of the kudzu bug, *Megacocta cribraria*, in the Southeast. Many thanks to Dr. Wayne Gardner (UGA) for updating and supplying this map regularly. There are **7 states** now reporting this invasive species. In order of appearance of the pest: Georgia, South Carolina, North Carolina, Alabama, Virginia, Florida, and Tennessee. Many more counties were added since the last updated map. Georgia and North Carolina will soon join South Carolina as being completely infested with this species.



Adults



Nymphs



Eggs

The Clemson University Cooperative Extension Service offers its programs to people of all ages, regardless of race, color, sex, religion, national origin, disability, political beliefs, sexual orientation, marital or family status and is an equal opportunity employer. Clemson University Cooperating with U.S. Department of Agriculture, South Carolina Counties, Extension Service, Clemson, South Carolina.

Public Service Activities

The mention of any commercial product in this publication does not imply its endorsement by Clemson University over other products not named, nor does the omission imply that they are not satisfactory.



Our recommendations for managing kudzu bugs in soybeans that were put together during the winter months based on our experiences last year can be found at:

http://www.clemson.edu/extension/kudzubugs/pdfs/kudzu_bug_insecticide_soybeans.pdf

Visit our kudzu bug webpage for the latest information on this invasive pest:

<http://www.clemson.edu/extension/kudzubugs/index.html>

Pest Management Handbook - 2012

Insect control recommendations are available online in the 2012 South Carolina Pest Management Handbook at:

<http://www.clemson.edu/extension/rowcrops/pest/index.html>

Need More Information?

For more Extension information: <http://www.clemson.edu/extension/>

For historical cotton/soybean insect newsletters:

http://www.clemson.edu/extension/rowcrops/cotton/pest_management/newsletters/index.html

Sincerely,

Jeremy K. Greene, Ph.D.
Professor – Entomologist



Visit our website at:
<http://www.clemson.edu>

The Clemson University Cooperative Extension Service offers its programs to people of all ages, regardless of race, color, sex, religion, national origin, disability, political beliefs, sexual orientation, marital or family status and is an equal opportunity employer. Clemson University Cooperating with U.S. Department of Agriculture, South Carolina Counties, Extension Service, Clemson, South Carolina.

Public Service Activities

The mention of any commercial product in this publication does not imply its endorsement by Clemson University over other products not named, nor does the omission imply that they are not satisfactory.