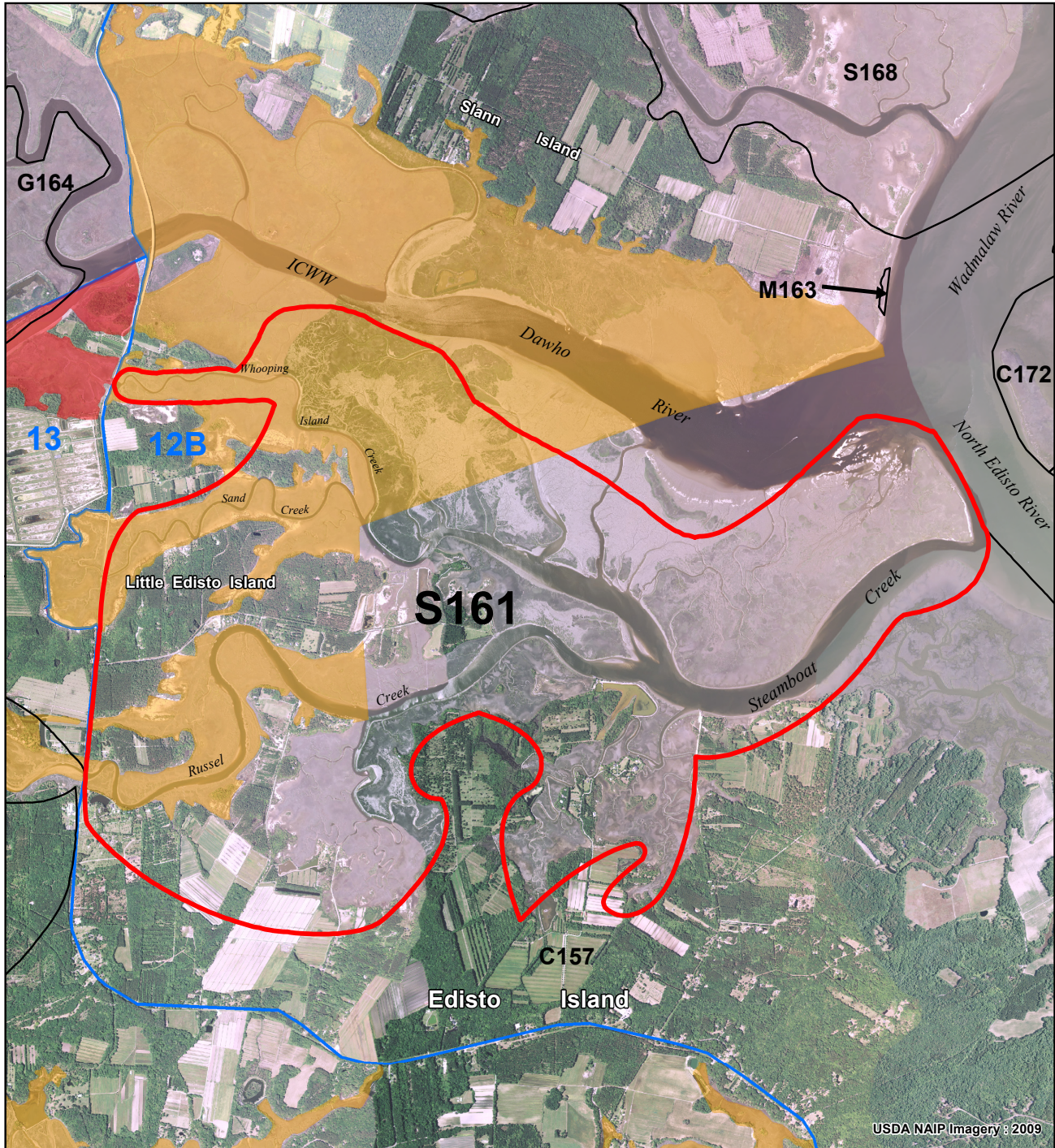


Steamboat Creek S161

S161 is within SCDHEC Shellfish Management Area 12B. These areas are subject to closure at any time. Please call (800)285-1618

SHELLFISH SEASON
2011 - 2012



USDA NAIP Imagery : 2009

Legend

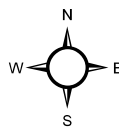
SHELLFISH HARVEST BOUNDARIES

- AREA OF INTEREST
- NEIGHBORING AREAS
- C000 = COMMERCIAL CULTURE PERMIT
- G000 = GRANT PERMIT
- M000 = MARICULTURE PERMIT
- S000 = STATE SHELLFISH GROUND

- SHELLFISH MANAGEMENT AREAS (SCDHEC)

WATER QUALITY (SCDHEC)

- PROHIBITED
- RESTRICTED
- CONDITIONALLY APPROVED



Location: Steamboat Creek, Russel Creek, Whopping Island Creek and Sand Creek County: Charleston

PRODUCED BY:
SOUTH CAROLINA DEPARTMENT OF NATURAL RESOURCES
OFFICE OF FISHERIES MANAGEMENT
SHELLFISH MANAGEMENT SECTION
08/2011

