

South Carolina Department of Probation, Parole & Pardon Services



Annual Statistical Report
Fiscal Year 2007



TABLE OF CONTENTS

SECTION A---TOTAL POPULATION

TABLE 1-A	Total Admissions by Status	3
TABLE 2-A	Total Admissions by Type of Offense	4
TABLE 3-A	Total Admissions by Gender & Race	5
FIGURE 1	Total Admissions by Gender & Race	6
TABLE 4-A	Active Offenders by Level of Supervision	7
FIGURE 2	Active Offenders by Level of Supervision	8
TABLE 5-A	Total Closures by Type	9
TABLE 6-A	Rate per Thousand High Risk Male Population	10
TABLE 7-A	Rate per Thousand High Risk Female Population	11
TABLE 8-A	Offender Drug Testing	12
TABLE 9-A	Total Admissions by Age	13

SECTION B---PROBATION

TABLE 1-B	Probation Admissions by Type of Offense	15
TABLE 2-B	Probation Admissions by Gender & Race	16
TABLE 3-B	Active Probation Offenders by Level of Supervision	17
FIGURE 3	Active Probation Offenders by Level of Supervision	18
TABLE 4-B	Probation Closures by Type	19
TABLE 5-B	Probation Admissions by Age	20

SECTION C---PAROLE

TABLE 1-C	Parole Admissions by Type of Offense	22
TABLE 2-C	Parole Admissions by Gender & Race	23
TABLE 3-C	Active Parole Offenders by Level of Supervision	24
FIGURE 4	Active Parole Offenders by Level of Supervision	25
TABLE 4-C	Parole Closures by Type	26
TABLE 5-C	Parole Admissions by Age	27

SECTION D---YOA

TABLE 1-D	YOA Admissions by Type of Offense	29
TABLE 2-D	YOA Admissions by Gender & Race	30
TABLE 3-D	Active YOA Offenders by Level of Supervision	31
FIGURE 5	Active YOA Offenders by Level of Supervision	32
TABLE 4-D	YOA Closures by Type	33
TABLE 5-D	YOA Admissions by Age	34

SECTION E---VIOLATIONS

TABLE 1-E	Violations by County	36
TABLE 2-E	Closings by Type	37

SUMMARY

CHART 1	Population Characteristics	39
CHART 2	Admissions to SCDPPPS	40
CHART 3	Violent Admission by Program	41



Message from the Director

The Fiscal Year 2006-07 Annual Statistical Report is attached for your review and reference. This report provides a basic statistical representation of the work of more than 770+ employees of this Department including 450+ Agents. While there have been many challenges over the course of the year, I am pleased to report that more than sixty-five out of every hundred offenders successfully completed supervision. The Bureau of Justice Statistics of the U.S. Department of Justice (2001) reported nationally that approximately 62% of 3.9 million offenders had successfully met the conditions of their supervision.

The South Carolina Department of Probation, Parole and Pardon Services operates its offender programs within a clear framework of public safety in supervising the 48,809 offenders who were under the legal jurisdiction of the Department in FY 07. The Department promotes public safety and offender compliance through ensuring that our interventions promote the offender's ability to make positive changes in his or her life. In addition, our interventions are responses focused to address present or potential problems that may interfere with the successful completion of supervision.

The following tables provide a description of the offender population and answer some of the more commonly asked questions regarding the Department's programmatic efforts. Each table is preceded by a short description of its contents.

For the reader who wishes additional information or clarification, please do not hesitate to contact Tony Dukes, Research Director of the Office of Executive Programs at 803-734-3503.

Sincerely,

A handwritten signature in black ink that reads "Samuel B. Glover". The signature is written in a cursive style.

Samuel B. Glover
Director



To the Reader

The reader should be aware that there are different ways of reporting units of data depending upon the purpose. Admissions include only those offenders admitted to SCDPPPS who had no other active cases at the time of admission. Closures information reflects only the last order to close during the fiscal year. Actives represents only those offenders who were active on June 30, 2007.

At the end of FY 2006-07, there were 48,809 offenders who were under the legal jurisdiction of the Department. Legal jurisdiction includes offenders who have been transferred out of state, absconded with active warrants, and others who are not under the active day-to-day supervision of the Department. At the end of the fiscal year 32,436 offenders were under active supervision of the Department.

In addition, due to rounding, some of the totals will not equal 100%. Where possible, missing data or rounding has been indicated.

Section A
Total Population



Total Population

Tables 1-A through 9-A and Figures 1-2, represent admissions to the SC Department of Probation, Parole and Pardon Services (SCDPPPS) over FY 06-07. These tables count admissions to a particular sanction, and include only those offenders admitted to SCDPPPS who had no other active cases at the time of admission. These tables also include only the main case even though an offender may have been admitted with more than one case. In FY 06-07, there were a total of 18,151 admissions. A state and county total is provided for each category of admission. Within the racial categories, due to the small number of offenders classified as "Hispanic, Native American, or Other", they have been grouped together and classified as "Other".

Table 1-A provides information on total admissions by program status¹. The counties of Charleston, Greenville, Richland and Spartanburg contributed the largest number of total admissions, together accounting for 33% of all admissions.

Table 2-A presents information on total admissions by type of offense, violent versus non-violent. Violent refers to those offenses as defined by the Omnibus Crime Act². Total admissions during FY 06-07 were predominately non-violent with very few admissions (5%) for violent offenses.

Table 3-A and Figure 1 illustrates total admissions by gender and race. Admissions overall continue to be predominately male, 81%, with a racial composition of 54% black, 44% white, and 2% other.

Table 4-A and Figure 2 describe all active offenders by level of supervision on June 30, 2007. This total does not include new and unclassified offenders, or indirect supervision offenders, such as those incarcerated on split sentences. The level of supervision

1

Probation status includes Probation, Probation Termination Upon Payment, Suspended During Probation, Split Probation, Monitor for the Court, and NGRI and Parole cases. Parole status includes Parole, Department of Juvenile Justice, Supervised Furlough IIA and early release program, and Community Supervision Program cases. YOA include Youth Offender Act Cases.

2

Murder, Armed Robbery, Attempted Armed Robbery, Kidnaping, Carjacking, Criminal Sexual Conduct 1st and 2nd degree, Criminal Sexual Conduct with a Minor, Assault with Intent to Commit Criminal Sexual Conduct 1st or 2nd degree, Engaging a Child for Sexual Performance, Assault and Battery with Intent to Kill, Voluntary Manslaughter, Drug Trafficking (44-53-370 e), Arson 1st and 2nd degree, Burglary 1st degree, Burglary 2nd degree with Aggravating Circumstances, or Accessory Before the Fact to any of the above crimes.

determines how often the offender is seen by the Agent. Among all offenders, high level supervision represented 23%, standard supervision represented 69%, sex offender supervision represented 3%, followed by intensive supervision at 4%.

Table 5-A shows total closures by type (successful or unsuccessful). Closures include only those offenders in which all cases have completely closed out from SCDPPPS. Only the last order to close during FY 06-07 and within that order only the main case, even though an offender may have had more than one case, is included. The overall success rate for all offenders closing during FY 06-07 was 65%. The unsuccessful rate, 35%, is defined as those offenders whose supervision was revoked due to a technical violation or new offense and those instances when the offender was sentenced to prison on a new offense.

Table 6-A presents the relationship between the number of high risk males (ages 17-34) in a county and the number of those males admitted to community supervision. This table illustrates that statewide, for every one thousand males age 17 to 34, 18.4 were admitted to the supervision of the SCDPPPS. County rates range from a low of 7.6 to a high of 32.7. This number is limited to new admissions for the fiscal year and does not reflect the percentage of active offenders in this age category.

Table 7-A demonstrates the relationship between the number of high risk females (ages 17-34) in a county and the number of those females admitted to community supervision. This table illustrates that statewide, for every one thousand females age 17 to 34, 4.2 were admitted to the supervision of the SCDPPPS. County rates range from a low of 0.0 to a high of 11.1. This number is limited to new admissions for the fiscal year and does not reflect the percentage of active offenders in this age category.

Table 8-A shows drug testing activity during FY 06-07. This table represents the number of individual offenders tested, the number of individuals testing positive, the number of - offenders were tested, and the total number of positive tests.

Table 9-A describes offender admissions by age category.

**S.C. DEPARTMENT OF
PROBATION, PAROLE AND PARDON SERVICES
TOTAL ADMISSIONS BY STATUS
TABLE 1-A**

COUNTY	PROB. ADM.	PERCENT PROB.	PAROLE ADM.	PERCENT PAROLE	YOA ADM.	PERCENT YOA	TOTAL ADM.
ABBEVILLE	84	89%	7	7%	3	3%	94
AIKEN	432	83%	66	13%	25	5%	523
ALLENDALE	26	59%	4	9%	14	32%	44
ANDERSON	771	88%	77	9%	33	4%	881
BAMBERG	54	82%	8	12%	4	6%	66
BARNWELL	55	79%	10	14%	5	7%	70
BEAUFORT	311	87%	28	8%	20	6%	359
BERKELEY	506	84%	40	7%	57	9%	603
CALHOUN	64	90%	1	1%	6	8%	71
CHARLESTON	1,432	82%	117	7%	207	12%	1,756
CHEROKEE	196	82%	20	8%	22	9%	238
CHESTER	106	82%	15	12%	9	7%	130
CHESTERFIELD	159	83%	12	6%	21	11%	192
CLARENDON	120	84%	13	9%	10	7%	143
COLLETON	134	80%	15	9%	18	11%	167
DARLINGTON	154	82%	18	10%	15	8%	187
DILLON	138	78%	19	11%	20	11%	177
DORCHESTER	423	83%	34	7%	50	10%	507
EDGEFIELD	85	83%	11	11%	6	6%	102
FAIRFIELD	107	88%	6	5%	8	7%	121
FLORENCE	543	84%	38	6%	64	10%	645
GEORGETOWN	240	84%	26	9%	20	7%	286
GREENVILLE	1,517	88%	147	8%	69	4%	1,733
GREENWOOD	260	86%	21	7%	20	7%	301
HAMPTON	20	57%	9	26%	6	17%	35
HORRY	796	86%	89	10%	40	4%	925
JASPER	49	68%	12	17%	11	15%	72
KERSHAW	113	76%	17	11%	18	12%	148
LANCASTER	254	87%	19	6%	20	7%	293
LAURENS	251	81%	32	10%	26	8%	309
LEE	39	71%	8	15%	8	15%	55
LEXINGTON	806	86%	85	9%	44	5%	935
MCCORMICK	36	80%	4	9%	5	11%	45
MARION	149	76%	28	14%	20	10%	197
MARLBORO	129	76%	26	15%	14	8%	169
NEWBERRY	199	87%	19	8%	10	4%	228
OCONEE	219	86%	22	9%	13	5%	254
ORANGEBURG	310	80%	41	11%	35	9%	386
PICKENS	311	86%	39	11%	13	4%	363
RICHLAND	951	79%	150	12%	103	9%	1,204
SALUDA	47	72%	11	17%	7	11%	65
SPARTANBURG	1,096	86%	102	8%	83	6%	1,281
SUMTER	352	75%	61	13%	55	12%	468
UNION	173	85%	15	7%	15	7%	203
WILLIAMSBURG	126	77%	17	10%	21	13%	164
YORK	696	79%	117	13%	71	8%	884
TRANSITIONAL ADM.	6	8%	43	57%	27	36%	76
STATE TOTAL	15,045	83%	1,719	9%	1,391	8%	18,155

**S.C. DEPARTMENT OF
PROBATION, PAROLE AND PARDON SERVICES
TOTAL ADMISSIONS BY TYPE OF OFFENSE
TABLE 2-A**

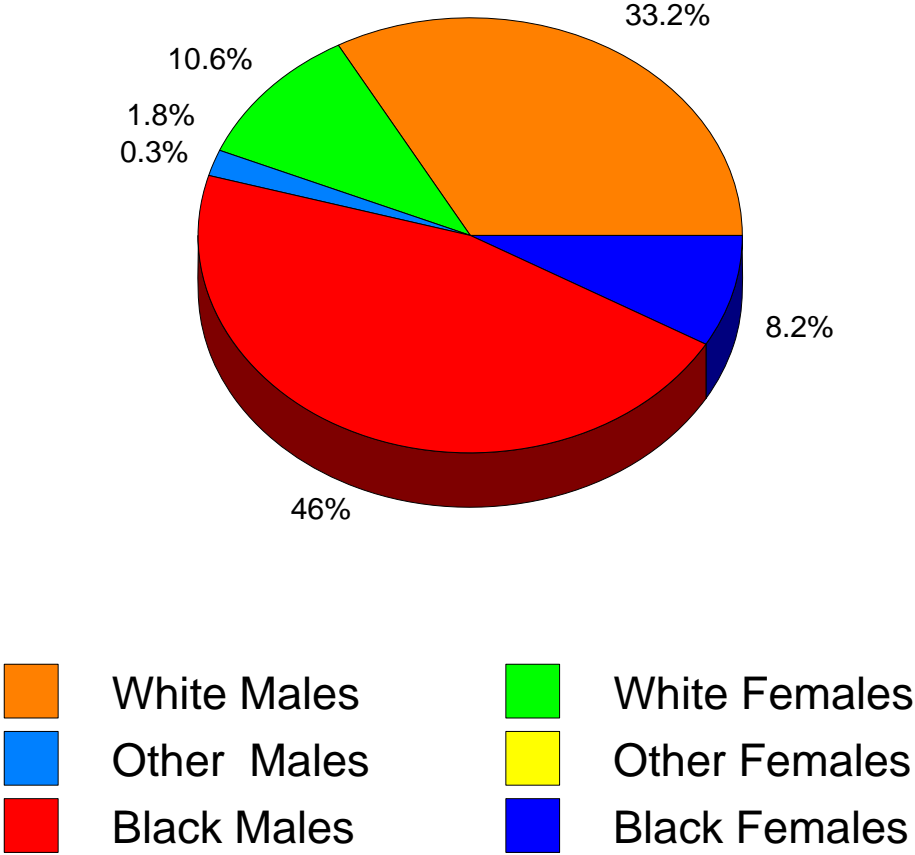
COUNTY	OMNIBUS VIOLENT	PERCENT VIOLENT	NONVIOLENT	PERCENT NONVIOLENT	TOTAL ADM.
ABBEVILLE	3	3%	91	97%	94
AIKEN	38	7%	485	93%	523
ALLENDALE	4	9%	40	91%	44
ANDERSON	51	6%	830	94%	881
BAMBERG	6	9%	60	91%	66
BARNWELL	5	7%	65	93%	70
BEAUFORT	13	4%	346	96%	359
BERKELEY	27	4%	576	96%	603
CALHOUN	1	1%	70	99%	71
CHARLESTON	93	5%	1,663	95%	1,756
CHEROKEE	14	6%	224	94%	238
CHESTER	9	7%	121	93%	130
CHESTERFIELD	1	1%	191	99%	192
CLARENDON	11	8%	132	92%	143
COLLETON	8	5%	159	95%	167
DARLINGTON	13	7%	174	93%	187
DILLON	8	5%	169	95%	177
DORCHESTER	18	4%	489	96%	507
EDGEFIELD	5	5%	97	95%	102
FAIRFIELD	3	2%	118	98%	121
FLORENCE	21	3%	624	97%	645
GEORGETOWN	15	5%	271	95%	286
GREENVILLE	91	5%	1,642	95%	1,733
GREENWOOD	14	5%	287	95%	301
HAMPTON	1	3%	34	97%	35
HORRY	45	5%	880	95%	925
JASPER	4	6%	68	94%	72
KERSHAW	12	8%	136	92%	148
LANCASTER	19	6%	274	94%	293
LAURENS	15	5%	294	95%	309
LEE	3	5%	52	95%	55
LEXINGTON	60	6%	875	94%	935
MCCORMICK	1	2%	44	98%	45
MARION	9	5%	188	95%	197
MARLBORO	11	7%	158	93%	169
NEWBERRY	11	5%	217	95%	228
OCONEE	14	6%	240	94%	254
ORANGEBURG	20	5%	366	95%	386
PICKENS	22	6%	341	94%	363
RICHLAND	88	7%	1,116	93%	1,204
SALUDA	3	5%	62	95%	65
SPARTANBURG	65	5%	1,216	95%	1,281
SUMTER	33	7%	435	93%	468
UNION	6	3%	197	97%	203
WILLIAMSBURG	16	10%	148	90%	164
YORK	52	6%	832	94%	884
TRANSITIONAL ADM.	14	18%	65	82%	79
STATE TOTAL	996	5%	17,162	95%	18,158

**S.C. DEPARTMENT OF
PROBATION, PAROLE AND PARDON SERVICES
TOTAL ADMISSIONS BY GENDER AND RACE
TABLE 3-A
N=18,158**

COUNTY	PERCENT MALE	PERCENT FEMALE	PERCENT BLACK	PERCENT OTHER	PERCENT WHITE
ABBEVILLE	82%	18%	50%	0%	50%
AIKEN	81%	19%	46%	0%	54%
ALLENDALE	100%	0%	95%	0%	5%
ANDERSON	78%	22%	33%	1%	67%
BAMBERG	85%	15%	80%	0%	20%
BARNWELL	81%	19%	66%	0%	34%
BEAUFORT	84%	16%	66%	5%	29%
BERKELEY	82%	18%	45%	3%	52%
CALHOUN	92%	8%	59%	4%	37%
CHARLESTON	86%	14%	69%	2%	29%
CHEROKEE	75%	25%	33%	2%	65%
CHESTER	88%	12%	61%	0%	39%
CHESTERFIELD	79%	21%	67%	2%	31%
CLARENDON	83%	17%	78%	1%	21%
COLLETON	81%	19%	63%	2%	34%
DARLINGTON	77%	23%	63%	1%	36%
DILLON	85%	15%	65%	7%	28%
DORCHESTER	84%	16%	45%	3%	53%
EDGEFIELD	75%	25%	71%	1%	28%
FAIRFIELD	82%	18%	70%	1%	29%
FLORENCE	81%	19%	69%	1%	30%
GEORGETOWN	83%	17%	55%	1%	44%
GREENVILLE	78%	22%	42%	3%	55%
GREENWOOD	83%	17%	56%	1%	43%
HAMPTON	86%	14%	80%	0%	20%
HORRY	80%	20%	38%	3%	59%
JASPER	86%	14%	65%	10%	25%
KERSHAW	77%	23%	51%	2%	47%
LANCASTER	78%	22%	48%	3%	49%
LAURENS	83%	17%	48%	2%	50%
LEE	82%	18%	87%	0%	13%
LEXINGTON	77%	23%	42%	3%	55%
MCCORMICK	76%	24%	73%	0%	27%
MARION	82%	18%	79%	1%	20%
MARLBORO	87%	13%	60%	5%	35%
NEWBERRY	81%	19%	67%	2%	31%
OCONEE	78%	22%	26%	0%	74%
ORANGEBURG	73%	27%	80%	1%	19%
PICKENS	76%	24%	15%	1%	83%
RICHLAND	81%	19%	79%	2%	19%
SALUDA	83%	17%	57%	6%	37%
SPARTANBURG	81%	19%	49%	2%	48%
SUMTER	82%	18%	74%	1%	25%
UNION	71%	29%	44%	0%	56%
WILLIAMSBURG	89%	11%	88%	0%	12%
YORK	83%	17%	46%	3%	52%
TRANSITIONAL ADM.	90%	10%	44%	1%	54%
STATE TOTAL	81%	19%	54%	2%	44%

TOTAL ADMISSIONS BY RACE AND GENDER

FIGURE 1

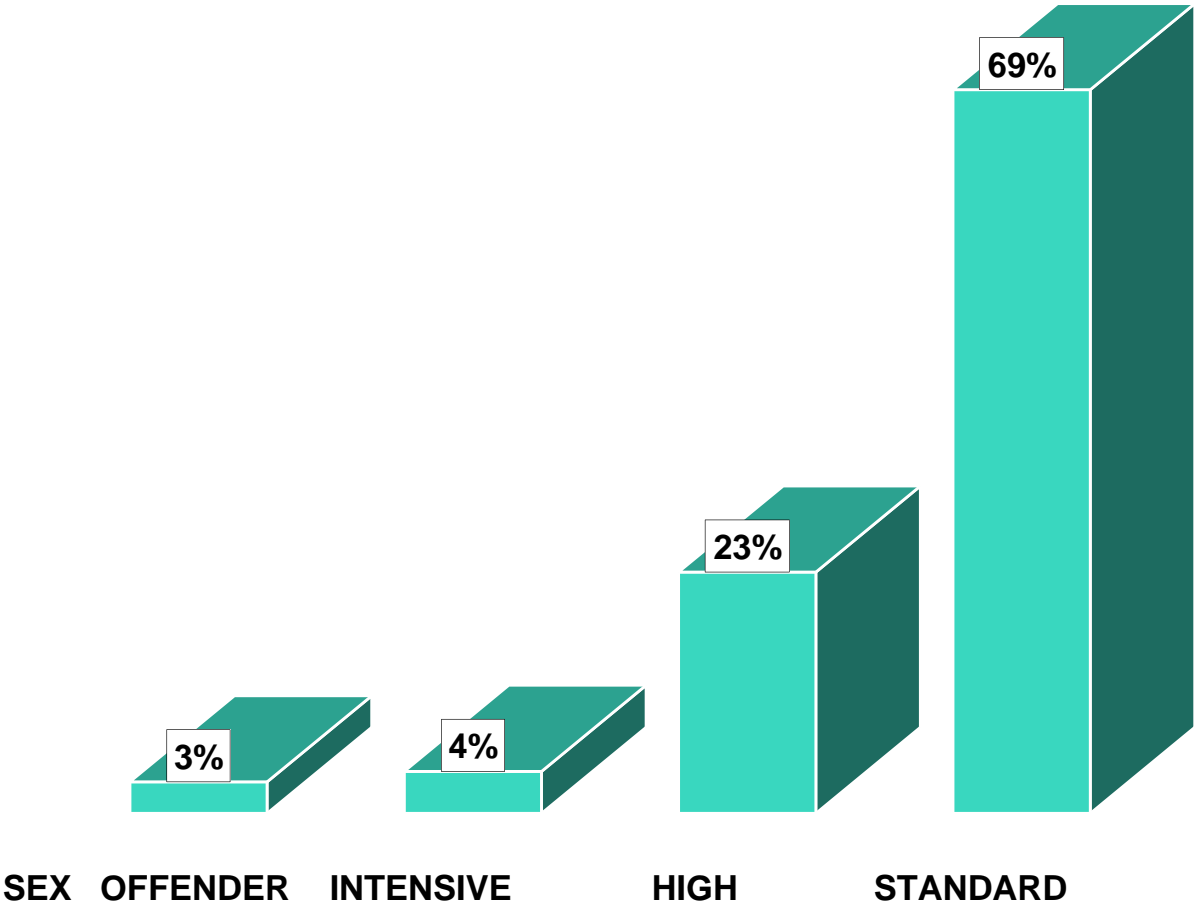


**S.C. DEPARTMENT OF
PROBATION, PAROLE AND PARDON SERVICES
ACTIVE OFFENDERS BY LEVEL OF
SUPERVISION, JUNE 30, 2007
TABLE 4-A**

COUNTY	STANDARD	HIGH	INTENSIVE	SEX OFFENDER	TOTAL
ABBEVILLE	69%	24%	2%	4%	183
AIKEN	75%	19%	2%	4%	1,205
ALLENDALE	66%	28%	1%	5%	85
ANDERSON	70%	22%	4%	4%	1,592
BAMBERG	81%	13%	3%	2%	128
BARNWELL	68%	23%	2%	7%	117
BEAUFORT	75%	20%	2%	3%	537
BERKELEY	74%	19%	2%	5%	1,099
CALHOUN	53%	37%	8%	3%	106
CHARLESTON	52%	40%	5%	3%	2,649
CHEROKEE	63%	28%	4%	5%	464
CHESTER	72%	19%	6%	3%	226
CHESTERFIELD	70%	25%	4%	1%	223
CLARENDON	80%	17%	2%	1%	228
COLLETON	70%	23%	3%	3%	287
DARLINGTON	75%	20%	4%	2%	315
DILLON	83%	10%	5%	2%	198
DORCHESTER	72%	21%	4%	3%	832
EDGEFIELD	70%	23%	3%	4%	242
FAIRFIELD	72%	23%	2%	3%	192
FLORENCE	69%	26%	3%	2%	1,029
GEORGETOWN	74%	21%	2%	3%	423
GREENVILLE	67%	26%	4%	3%	3,407
GREENWOOD	63%	32%	2%	3%	541
HAMPTON	78%	16%	4%	2%	115
HORRY	77%	17%	3%	3%	1,386
JASPER	71%	18%	6%	5%	196
KERSHAW	65%	26%	4%	6%	262
LANCASTER	66%	29%	4%	2%	564
LAURENS	72%	23%	3%	2%	663
LEE	42%	49%	6%	3%	143
LEXINGTON	72%	20%	5%	3%	1,517
MCCORMICK	70%	20%	6%	4%	50
MARION	74%	16%	8%	2%	243
MARLBORO	70%	23%	5%	1%	223
NEWBERRY	62%	34%	2%	2%	402
OCONEE	66%	29%	1%	4%	539
ORANGEBURG	81%	13%	4%	2%	748
PICKENS	66%	26%	3%	5%	782
RICHLAND	78%	16%	4%	2%	2,729
SALUDA	67%	22%	6%	5%	134
SPARTANBURG	65%	29%	4%	2%	2,146
SUMTER	75%	18%	5%	2%	799
UNION	69%	25%	1%	4%	397
WILLIAMSBURG	64%	26%	7%	3%	269
YORK	76%	16%	5%	3%	1,519
RESTITUTION CENTERS	41%	3%	56%	0%	324
STATE TOTAL	69%	23%	4%	3%	
ACTIVE OFFENDERS	22,486	7,583	1,420	969	32,458

ACTIVE OFFENDERS BY LEVEL OF SUPERVISION

FIGURE 2



**S.C. DEPARTMENT OF
PROBATION, PAROLE AND PARDON SERVICES
TOTAL CLOSURES BY TYPE
TABLE 5-A**

COUNTY	SUCCESSFUL	SUCCESSFUL RATE	UNSUCCESSFUL	UNSUCCESSFUL RATE
ABBEVILLE	79	64%	45	36%
AIKEN	274	76%	87	24%
ALLENDALE	24	52%	22	48%
ANDERSON	416	61%	265	39%
BAMBERG	67	81%	16	19%
BARNWELL	43	68%	20	32%
BEAUFORT	180	64%	102	36%
BERKELEY	378	72%	149	28%
CALHOUN	38	60%	25	40%
CHARLESTON	901	64%	499	36%
CHEROKEE	194	71%	78	29%
CHESTER	82	64%	47	36%
CHESTERFIELD	84	56%	67	44%
CLARENDON	85	67%	42	33%
COLLETON	65	59%	45	41%
DARLINGTON	116	57%	86	43%
DILLON	88	62%	53	38%
DORCHESTER	272	69%	122	31%
EDGEFIELD	56	76%	18	24%
FAIRFIELD	57	55%	47	45%
FLORENCE	424	67%	210	33%
GEORGETOWN	164	65%	88	35%
GREENVILLE	1005	64%	563	36%
GREENWOOD	219	64%	124	36%
HAMPTON	40	66%	21	34%
HORRY	544	63%	319	37%
JASPER	50	54%	42	46%
KERSHAW	91	55%	75	45%
LANCASTER	174	68%	81	32%
LAURENS	263	63%	156	37%
LEE	39	64%	22	36%
LEXINGTON	455	71%	182	29%
MCCORMICK	23	64%	13	36%
MARION	90	57%	67	43%
MARLBORO	94	58%	68	42%
NEWBERRY	125	72%	48	28%
OCONEE	161	67%	78	33%
ORANGEBURG	254	73%	95	27%
PICKENS	182	70%	77	30%
RICHLAND	716	59%	500	41%
SALUDA	54	63%	32	37%
SPARTANBURG	700	57%	533	43%
SUMTER	297	56%	236	44%
UNION	98	58%	70	42%
WILLIAMSBURG	92	54%	78	46%
YORK	553	73%	204	27%
TRANSITIONAL ADM.	318	99%	3	1%
STATE TOTAL	10,724	65%	5,820	35%

**S.C. DEPARTMENT OF
PROBATION, PAROLE AND PARDON SERVICES
RATE PER 1,000 HIGH RISK
MALE (ADMISSIONS) POPULATION
TABLE 6-A**

COUNTY	MALE POPULATION AGE 17-34*	SCDPPPS MALES AGE 17-34	RATE PER 1,000 AGE 17-34 OFFENDERS	RANK ORDER RATE PER 1,000 OFFENDERS
ABBEVILLE	2,915	48	16.5	16
AIKEN	15,928	249	15.6	13
ALLENDALE	1,603	35	21.8	33
ANDERSON	18,993	414	21.8	32
BAMBERG	2,087	34	16.3	15
BARNWELL	2,602	36	13.8	10
BEAUFORT	18,413	205	11.1	3
BERKELEY	21,888	351	16.0	14
CALHOUN	1,488	32	21.5	31
CHARLESTON	43,941	1,060	24.1	36
CHEROKEE	6,483	109	16.8	18
CHESTER	3,832	74	19.3	27
CHESTERFIELD	5,029	96	19.1	26
CLARENDON	4,189	77	18.4	23
COLLETON	4,050	100	24.7	39
DARLINGTON	7,570	99	13.1	7
DILLON	3,488	114	32.7	46
DORCHESTER	11,113	292	26.3	41
EDGEFIELD	3,843	47	12.2	5
FAIRFIELD	2,565	66	25.7	40
FLORENCE	14,939	362	24.2	37
GEORGETOWN	5,644	162	28.7	43
GREENVILLE	49,263	750	15.2	12
GREENWOOD	8,089	159	19.7	29
HAMPTON	2,901	22	7.6	1
HORRY	24,916	475	19.1	25
JASPER	3,179	45	14.2	11
KERSHAW	5,560	73	13.1	8
LANCASTER	7,921	149	18.8	24
LAURENS	8,449	154	18.2	22
LEE	2,758	36	13.1	6
LEXINGTON	25,618	454	17.7	19
MCCORMICK	1,404	17	12.1	4
MARION	4,035	122	30.2	45
MARLBORO	3,769	106	28.1	42
NEWBERRY	4,378	108	24.7	38
OCONEE	7,401	132	17.8	20
ORANGEBURG	10,724	193	18.0	21
PICKENS	18,560	165	8.9	2
RICHLAND	49,109	654	13.3	9
SALUDA	2,385	40	16.8	17
SPARTANBURG	31,437	622	19.8	30
SUMTER	13,540	266	19.6	28
UNION	3,254	98	30.1	44
WILLIAMSBURG	3,986	96	24.1	35
YORK	19,844	462	23.3	34
STATE TOTAL	515,083	9,460	18.4	

*DATA FURNISHED BY S.C. STATE DATA CENTER

**S.C. DEPARTMENT OF
PROBATION, PAROLE AND PARDON SERVICES
RATE PER 1,000 HIGH RISK
FEMALE (ADMISSIONS) POPULATION
TABLE 7-A**

COUNTY	FEMALE POPULATION AGE 17-34*	SCDPPPS FEMALES AGE 17-34	RATE PER 1,000 AGE 17-34 OFFENDERS	RANK ORDER RATE PER 1,000 OFFENDERS
ABBEVILLE	3,176	10	3.1	16
AIKEN	17,023	60	3.5	21
ALLENDALE	1,184	0	0.0	1
ANDERSON	19,519	90	4.6	33
BAMBERG	2,270	4	1.8	4
BARNWELL	2,747	8	2.9	13
BEAUFORT	13,976	36	2.6	10
BERKELEY	18,012	65	3.6	23
CALHOUN	1,666	3	1.8	5
CHARLESTON	43,604	141	3.2	17
CHEROKEE	6,665	40	6.0	44
CHESTER	4,079	8	2.0	7
CHESTERFIELD	5,096	20	3.9	28
CLARENDON	3,393	10	2.9	14
COLLETON	4,309	15	3.5	20
DARLINGTON	8,302	20	2.4	8
DILLON	3,802	18	4.7	38
DORCHESTER	11,378	41	3.6	22
EDGEFIELD	2,582	15	5.8	43
FAIRFIELD	2,749	10	3.6	25
FLORENCE	16,331	77	4.7	37
GEORGETOWN	5,966	30	5.0	40
GREENVILLE	49,074	166	3.4	19
GREENWOOD	8,937	35	3.9	27
HAMPTON	2,305	4	1.7	3
HORRY	23,882	97	4.1	29
JASPER	2,337	6	2.6	9
KERSHAW	5,815	21	3.6	24
LANCASTER	7,138	44	6.2	45
LAURENS	8,401	28	3.3	18
LEE	2,245	7	3.1	15
LEXINGTON	26,429	123	4.7	34
MCCORMICK	840	4	4.8	39
MARION	4,490	21	4.7	35
MARLBORO	3,375	17	5.0	41
NEWBERRY	4,353	25	5.7	42
OCONEE	7,204	32	4.4	32
ORANGEBURG	12,373	58	4.7	36
PICKENS	16,862	46	2.7	12
RICHLAND	49,742	135	2.7	11
SALUDA	2,174	4	1.8	6
SPARTANBURG	31,676	133	4.2	31
SUMTER	13,402	51	3.8	26
UNION	3,424	38	11.1	46
WILLIAMSBURG	4,368	6	1.4	2
YORK	21,679	89	4.1	30
STATE TOTAL	510,354	1,911	3.7	

*DATA FURNISHED BY S.C. STATE DATA CENTER

**S.C. DEPARTMENT OF
PROBATION, PAROLE AND PARDON SERVICES
OFFENDER DRUG TESTING
TABLE 8-A**

COUNTY	INDIVIDUAL OFFENDERS TESTED	INDIVIDUALS TESTING POSITIVE	PERCENTAGE OF INDIVIDUAL OFFENDERS TESTING POSITIVE	TOTAL NO. POSITIVE TESTS	NUMBER OF TIMES OFFENDERS WERE TESTED
ABBEVILLE	7	6	85.71%	10	8
AIKEN	512	132	25.78%	232	732
ALLENDALE	70	29	41.43%	44	94
ANDERSON	1088	429	39.43%	721	1731
BAMBERG	80	15	18.75%	19	95
BARNWELL	69	14	20.29%	16	88
BEAUFORT*	346	143	41.33%	264	550
BERKELEY*	420	167	39.76%	284	523
CALHOUN	68	29	42.65%	69	141
CHARLESTON	1047	556	53.10%	1127	1747
CHEROKEE	201	90	44.78%	151	284
CHESTER	99	18	18.18%	22	108
CHESTERFIELD	210	77	36.67%	147	449
CLARENDON	85	27	31.76%	36	108
COLLETON	78	39	50.00%	55	112
DARLINGTON	262	85	32.44%	125	382
DILLON	58	31	53.45%	40	66
DORCHESTER*	290	124	42.76%	205	418
EDGEFIELD	169	56	33.14%	95	250
FAIRFIELD	154	62	40.26%	90	208
FLORENCE*	841	305	36.27%	518	1194
GEORGETOWN	166	79	47.59%	119	250
GREENVILLE*	1596	618	38.72%	1204	2870
GREENWOOD	159	62	38.99%	97	227
HAMPTON	45	17	37.78%	24	54
HORRY	627	213	33.97%	343	874
JASPER	52	14	26.92%	19	82
KERSHAW	219	108	49.32%	200	461
LANCASTER	393	190	48.35%	300	540
LAURENS	413	205	49.64%	445	781
LEE	12	7	58.33%	14	18
LEXINGTON	593	247	41.65%	406	845
MCCORMICK	32	10	31.25%	14	38
MARION	92	54	58.70%	91	139
MARLBORO	128	40	31.25%	52	157
NEWBERRY	105	44	41.90%	77	145
OCONEE	103	56	54.37%	113	153
ORANGEBURG	598	197	32.94%	271	737
PICKENS	116	42	36.21%	71	139
RICHLAND	1535	624	40.65%	1145	2682
SALUDA	139	22	15.83%	28	216
SPARTANBURG	1354	512	37.81%	865	2177
SUMTER	283	186	65.72%	296	409
UNION	96	45	46.88%	77	128
WILLIAMSBURG	178	83	46.63%	154	266
YORK*	859	311	36.20%	456	1178
SPARTANBURG REST. CTR.	190	77	40.53%	115	293
CHARLESTON REST. CTR	265	110	41.51%	179	520
COLUMBIA REST. CTR	403	194	48.14%	335	736
STATE TOTAL	16,905	6,801	40.23%	11,780	26,403

* Includes Satellite Office

**S.C. DEPARTMENT OF
PROBATION, PAROLE AND PARDON SERVICES
TOTAL ADMISSIONS BY AGE**

TABLE 9-A

N = 18,158

COUNTY	Age 24 & Under	Percent 24 & Under	Age 25 & Over	Percent 25 & Over
ABBEVILLE	25	27%	69	73%
AIKEN	147	28%	376	72%
ALLENDALE	16	36%	28	64%
ANDERSON	227	26%	654	74%
BAMBERG	21	32%	45	68%
BARNWELL	19	27%	51	73%
BEAUFORT	133	37%	226	63%
BERKELEY	221	37%	382	63%
CALHOUN	22	31%	49	69%
CHARLESTON	661	38%	1,095	62%
CHEROKEE	68	29%	170	71%
CHESTER	38	29%	92	71%
CHESTERFIELD	56	29%	136	71%
CLARENDON	39	27%	104	73%
COLLETON	62	37%	105	63%
DARLINGTON	53	28%	134	72%
DILLON	66	37%	111	63%
DORCHESTER	172	34%	335	66%
EDGEFIELD	30	29%	72	71%
FAIRFIELD	39	32%	82	68%
FLORENCE	208	32%	437	68%
GEORGETOWN	92	32%	194	68%
GREENVILLE	405	23%	1,328	77%
GREENWOOD	89	30%	212	70%
HAMPTON	13	37%	22	63%
HORRY	271	29%	654	71%
JASPER	32	44%	40	56%
KERSHAW	50	34%	98	66%
LANCASTER	96	33%	197	67%
LAURENS	94	30%	215	70%
LEE	25	45%	30	55%
LEXINGTON	290	31%	645	69%
MCCORMICK	8	18%	37	82%
MARION	73	37%	124	63%
MARLBORO	54	32%	115	68%
NEWBERRY	80	35%	148	65%
OCONEE	78	31%	176	69%
ORANGEBURG	139	36%	247	64%
PICKENS	99	27%	264	73%
RICHLAND	403	33%	801	67%
SALUDA	19	29%	46	71%
SPARTANBURG	357	28%	924	72%
SUMTER	170	36%	298	64%
UNION	76	37%	127	63%
WILLIAMSBURG	51	31%	113	69%
YORK	303	34%	581	66%
TRANSITIONAL ADM.	30	38%	49	62%
STATE TOTAL	5,720	32%	12,438	68%

Section B
Probation



Probation

The Department is charged with the responsibility of supervising those offenders placed on probation by the Court. Probation is a court-ordered community sanction which suspends the imposition of all or part of the original sentence of incarceration. It requires the offender, under SCDPPPS supervision in the community, to adhere to a set of conditions which limit the offender's freedom, reparation to victims if so ordered, and to provide for judicial revocation for violation of those conditions.

Tables 1-B and 2-B represent all probation admissions during FY 06-07. Probation includes regular probation, intensive probation, offenders admitted to probation supervision from a split sentence from prison.

Table 1-B breaks down probation admissions in terms of offense type, violent versus non-violent. For FY 06-07 statewide 2% of all probation admissions were for violent offenses.

Table 2-B provides information on probation admissions by gender and race. Probation admissions were predominately male, 79%, with a racial composition of 51% black, 2% other, and 47% white.

Table 3-B and Figure 3 describe the active probation offender population in terms of level of supervision on June 30, 2007. This table does not include new and unclassified offenders or indirect supervision offenders, such as those incarcerated on split sentences. Among probationers, high level supervision represented 25%, standard supervision represented 71%, sex offender supervision 3%, followed by intensive supervision at 2%.

Table 4-B provides data for probation closures by type (successful or unsuccessful). The overall success rate for probationers (65%) was the same as the success rate for the total offender population (65%).

Table 5-B reflects probation admissions by age category.

**S.C DEPARTMENT OF
PROBATION, PAROLE AND PARDON SERVICES
PROBATION ADMISSIONS BY TYPE OF OFFENSE
TABLE 1-B**

COUNTY	OMNIBUS VIOLENT	PERCENT VIOLENT	NONVIOLENT	PERCENT NONVIOLENT	TOTAL
ABBEVILLE	2	2%	82	98%	84
AIKEN	21	5%	411	95%	432
ALLENDALE	3	12%	23	88%	26
ANDERSON	20	3%	751	97%	771
BAMBERG	2	4%	52	96%	54
BARNWELL	2	4%	53	96%	55
BEAUFORT	7	2%	304	98%	311
BERKELEY	12	2%	494	98%	506
CALHOUN	1	2%	63	98%	64
CHARLESTON	26	2%	1406	98%	1,432
CHEROKEE	5	3%	191	97%	196
CHESTER	2	2%	104	98%	106
CHESTERFIELD	0	0%	159	100%	159
CLARENDON	3	3%	117	98%	120
COLLETON	0	0%	134	100%	134
DARLINGTON	3	2%	151	98%	154
DILLON	3	2%	135	98%	138
DORCHESTER	10	2%	413	98%	423
EDGEFIELD	2	2%	83	98%	85
FAIRFIELD	0	0%	107	100%	107
FLORENCE	6	1%	537	99%	543
GEORGETOWN	4	2%	236	98%	240
GREENVILLE	47	3%	1470	97%	1,517
GREENWOOD	6	2%	254	98%	260
HAMPTON	1	5%	19	95%	20
HORRY	17	2%	779	98%	796
JASPER	1	2%	48	98%	49
KERSHAW	2	2%	111	98%	113
LANCASTER	11	4%	243	96%	254
LAURENS	7	3%	244	97%	251
LEE	1	3%	38	97%	39
LEXINGTON	20	2%	786	98%	806
MCCORMICK	0	0%	36	100%	36
MARION	2	1%	147	99%	149
MARLBORO	2	2%	127	98%	129
NEWBERRY	3	2%	196	98%	199
OCONEE	3	1%	216	99%	219
ORANGEBURG	7	2%	303	98%	310
PICKENS	9	3%	302	97%	311
RICHLAND	26	3%	925	97%	951
SALUDA	0	0%	47	100%	47
SPARTANBURG	21	2%	1075	98%	1,096
SUMTER	9	3%	343	97%	352
UNION	4	2%	169	98%	173
WILLIAMSBURG	8	6%	118	94%	126
YORK	13	2%	682	98%	695
TRANSITIONAL ADM.	1	11%	8	89%	9
STATE TOTAL	355	2%	14,692	98%	15,047

**S.C. DEPARTMENT OF
PROBATION, PAROLE AND PARDON SERVICES
PROBATION ADMISSIONS BY GENDER AND RACE**

**TABLE 2-B
N= 15,047**

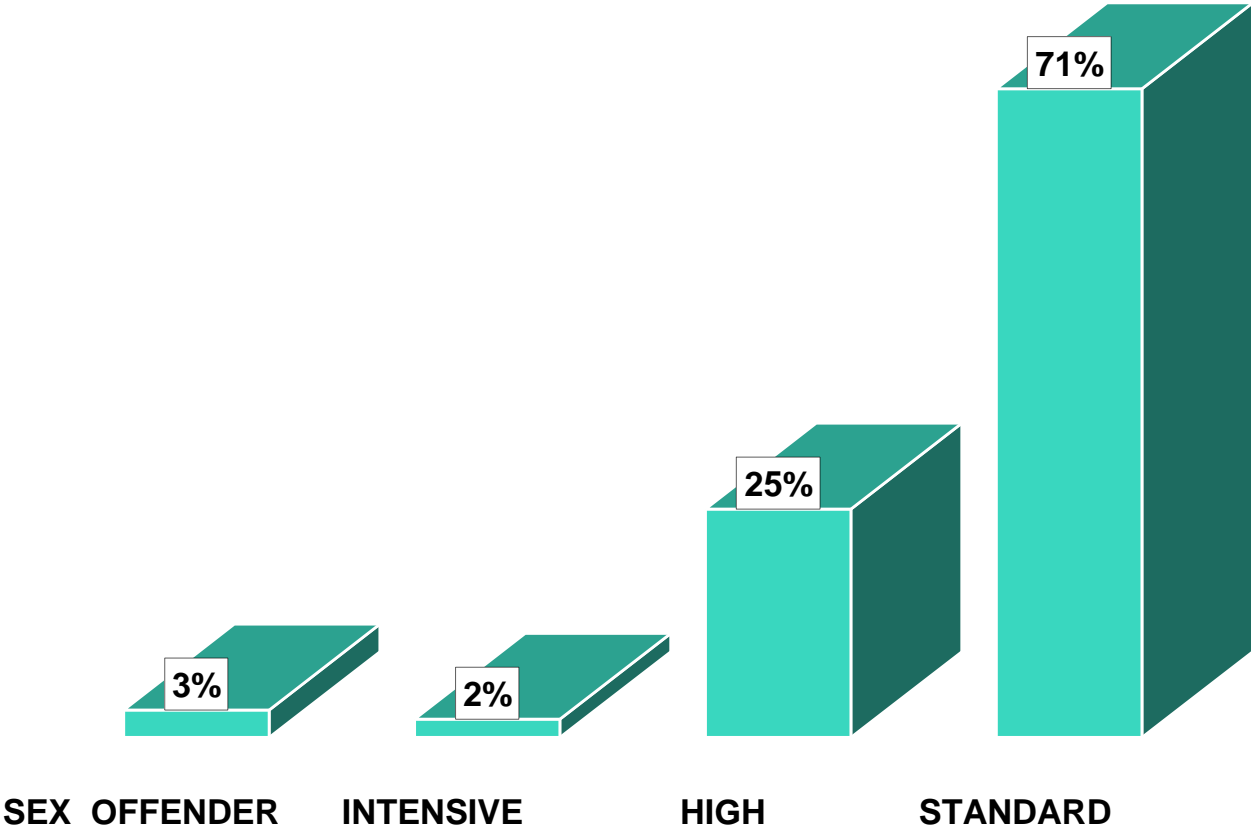
COUNTY	PERCENT MALE	PERCENT FEMALE	PERCENT BLACK	PERCENT OTHER	PERCENT WHITE
ABBEVILLE	80%	20%	46%	0%	54%
AIKEN	78%	22%	44%	0%	56%
ALLENDALE	100%	0%	92%	0%	8%
ANDERSON	77%	23%	31%	1%	69%
BAMBERG	83%	17%	78%	0%	22%
BARNWELL	78%	22%	67%	0%	33%
BEAUFORT	82%	18%	63%	6%	31%
BERKELEY	80%	20%	43%	3%	54%
CALHOUN	91%	9%	59%	5%	36%
CHARLESTON	83%	17%	65%	2%	34%
CHEROKEE	72%	28%	32%	2%	67%
CHESTER	87%	13%	60%	0%	40%
CHESTERFIELD	75%	25%	65%	3%	33%
CLARENDON	79%	21%	78%	0%	23%
COLLETON	78%	22%	63%	3%	34%
DARLINGTON	73%	27%	60%	1%	40%
DILLON	84%	16%	62%	7%	31%
DORCHESTER	83%	17%	42%	3%	55%
EDGEFIELD	75%	25%	67%	1%	32%
FAIRFIELD	79%	21%	68%	1%	31%
FLORENCE	78%	22%	66%	1%	33%
GEORGETOWN	81%	19%	50%	2%	48%
GREENVILLE	77%	23%	40%	4%	56%
GREENWOOD	82%	18%	54%	1%	45%
HAMPTON	85%	15%	75%	0%	25%
HORRY	78%	22%	34%	3%	63%
JASPER	82%	18%	57%	14%	29%
KERSHAW	72%	28%	44%	1%	55%
LANCASTER	75%	25%	47%	3%	50%
LAURENS	82%	18%	46%	2%	52%
LEE	79%	21%	85%	0%	15%
LEXINGTON	75%	25%	41%	3%	56%
MCCORMICK	72%	28%	69%	0%	31%
MARION	77%	23%	74%	1%	24%
MARLBORO	83%	17%	56%	5%	39%
NEWBERRY	79%	21%	65%	3%	32%
OCONEE	75%	25%	23%	0%	77%
ORANGEBURG	69%	31%	79%	1%	20%
PICKENS	74%	26%	14%	1%	85%
RICHLAND	80%	20%	76%	2%	22%
SALUDA	81%	19%	47%	9%	45%
SPARTANBURG	79%	21%	47%	3%	50%
SUMTER	78%	22%	70%	2%	28%
UNION	68%	32%	43%	0%	57%
WILLIAMSBURG	87%	13%	86%	0%	14%
YORK	81%	19%	41%	3%	56%
TRANSITIONAL ADM.	67%	33%	17%	0%	83%
STATE TOTAL	79%	21%	51%	2%	47%

**S.C. DEPARTMENT OF
PROBATION, PAROLE AND PARDON SERVICES
ACTIVE PROBATION OFFENDERS BY LEVEL
OF SUPERVISION, JUNE 30, 2007
TABLE 3-B**

COUNTY	ADMIN	HIGH	INTENSIVE	SEX OFFENDER	TOTAL
ABBEVILLE	69%	26%	1%	4%	158
AIKEN	75%	19%	2%	4%	986
ALLENDALE	72%	23%	0%	5%	64
ANDERSON	71%	25%	1%	3%	1,363
BAMBERG	84%	14%	1%	1%	111
BARNWELL	68%	26%	1%	5%	84
BEAUFORT	76%	20%	2%	2%	457
BERKELEY	76%	18%	1%	4%	924
CALHOUN	54%	40%	3%	2%	87
CHARLESTON	52%	42%	3%	3%	2,131
CHEROKEE	64%	32%	2%	3%	376
CHESTER	74%	22%	1%	3%	184
CHESTERFIELD	73%	26%	0%	1%	179
CLARENDON	78%	18%	3%	1%	188
COLLETON	73%	25%	1%	1%	222
DARLINGTON	75%	23%	1%	1%	241
DILLON	83%	13%	2%	2%	147
DORCHESTER	73%	22%	2%	4%	702
EDGEFIELD	70%	24%	2%	4%	211
FAIRFIELD	71%	24%	1%	3%	168
FLORENCE	69%	28%	2%	1%	820
GEORGETOWN	75%	22%	1%	2%	348
GREENVILLE	68%	28%	2%	2%	2,914
GREENWOOD	64%	33%	1%	2%	457
HAMPTON	80%	18%	0%	1%	87
HORRY	78%	18%	1%	3%	1,162
JASPER	73%	21%	1%	5%	147
KERSHAW	69%	26%	1%	3%	202
LANCASTER	67%	29%	2%	2%	500
LAURENS	73%	25%	0%	2%	550
LEE	42%	56%	0%	2%	104
LEXINGTON	74%	20%	4%	3%	1,301
MCCORMICK	66%	21%	8%	5%	38
MARION	78%	15%	4%	3%	185
MARLBORO	76%	22%	2%	0%	153
NEWBERRY	62%	36%	0%	1%	341
OCONEE	68%	29%	0%	3%	463
ORANGEBURG	82%	14%	2%	2%	557
PICKENS	67%	27%	1%	5%	685
RICHLAND	79%	17%	2%	2%	2,146
SALUDA	74%	18%	4%	5%	106
SPARTANBURG	66%	31%	2%	2%	1,861
SUMTER	77%	19%	2%	2%	592
UNION	71%	25%	0%	4%	353
WILLIAMSBURG	69%	27%	1%	3%	197
YORK	79%	17%	2%	2%	1,202
RESTITUTION CENTERS	94%	6%	0%	0%	124
STATE TOTAL	71%	25%	2%	3%	
ACTIVE OFFENDERS	18,833	6,600	471	674	26,578

ACTIVE PROBATION OFFENDERS BY LEVEL OF SUPERVISION

FIGURE 3



**S.C. DEPARTMENT OF
PROBATION, PAROLE AND PARDON SERVICES
PROBATION CLOSURES BY TYPE
TABLE 4-B**

COUNTY	SUCCESSFUL	SUCCESSFUL RATE	UNSUCCESSFUL	UNSUCCESSFUL RATE
ABBEVILLE	65	59%	45	41%
AIKEN	241	77%	73	23%
ALLENDALE	22	54%	19	46%
ANDERSON	332	58%	237	42%
BAMBERG	56	80%	14	20%
BARNWELL	33	72%	13	28%
BEAUFORT	154	62%	96	38%
BERKELEY	324	72%	123	28%
CALHOUN	37	64%	21	36%
CHARLESTON	785	68%	367	32%
CHEROKEE	172	71%	69	29%
CHESTER	69	63%	40	37%
CHESTERFIELD	65	57%	49	43%
CLARENDON	70	66%	36	34%
COLLETON	58	65%	31	35%
DARLINGTON	93	58%	67	42%
DILLON	67	61%	42	39%
DORCHESTER	236	71%	97	29%
EDGEFIELD	45	75%	15	25%
FAIRFIELD	49	53%	43	47%
FLORENCE	365	68%	172	32%
GEORGETOWN	131	66%	68	34%
GREENVILLE	871	63%	503	37%
GREENWOOD	181	64%	104	36%
HAMPTON	35	66%	18	34%
HORRY	474	62%	295	38%
JASPER	38	54%	33	46%
KERSHAW	76	54%	65	46%
LANCASTER	158	70%	69	30%
LAURENS	228	63%	132	37%
LEE	34	68%	16	32%
LEXINGTON	399	71%	165	29%
MCCORMICK	21	64%	12	36%
MARION	72	59%	51	41%
MARLBORO	70	56%	55	44%
NEWBERRY	99	72%	39	28%
OCONEE	134	66%	68	34%
ORANGEBURG	207	74%	74	26%
PICKENS	160	72%	62	28%
RICHLAND	577	58%	425	42%
SALUDA	43	61%	27	39%
SPARTANBURG	622	58%	451	42%
SUMTER	244	54%	205	46%
UNION	79	56%	61	44%
WILLIAMSBURG	81	56%	63	44%
YORK	451	73%	168	27%
TRANSITIONAL ADM.	238	100%	1	0%
STATE TOTAL	9,061	65%	4,899	35%

**S.C. DEPARTMENT OF
PROBATION, PAROLE AND PARDON SERVICES
PROBATION ADMISSIONS BY AGE*
TABLE 5-B**

COUNTY	Age 24 & Under	Percent 24 & Under	Age 25 & Over	Percent 25 & Over
ABBEVILLE	22	26%	62	74%
AIKEN	117	27%	315	73%
ALLENDALE	8	31%	18	69%
ANDERSON	187	24%	584	76%
BAMBERG	16	30%	38	70%
BARNWELL	12	22%	43	78%
BEAUFORT	110	35%	201	65%
BERKELEY	174	34%	332	66%
CALHOUN	18	28%	46	72%
CHARLESTON	479	33%	953	67%
CHEROKEE	50	26%	146	74%
CHESTER	27	25%	79	75%
CHESTERFIELD	37	23%	122	77%
CLARENDON	30	25%	90	75%
COLLETON	45	34%	89	66%
DARLINGTON	38	25%	116	75%
DILLON	46	33%	92	67%
DORCHESTER	133	31%	290	69%
EDGEFIELD	24	28%	61	72%
FAIRFIELD	31	29%	76	71%
FLORENCE	148	27%	395	73%
GEORGETOWN	69	29%	171	71%
GREENVILLE	338	22%	1179	78%
GREENWOOD	72	28%	188	72%
HAMPTON	6	30%	14	70%
HORRY	219	28%	577	72%
JASPER	21	43%	28	57%
KERSHAW	31	27%	82	73%
LANCASTER	76	30%	178	70%
LAURENS	70	28%	181	72%
LEE	17	44%	22	56%
LEXINGTON	239	30%	567	70%
MCCORMICK	4	11%	32	89%
MARION	54	36%	95	64%
MARLBORO	38	29%	91	71%
NEWBERRY	69	35%	130	65%
OCONEE	62	28%	157	72%
ORANGEBURG	102	33%	208	67%
PICKENS	81	26%	230	74%
RICHLAND	292	31%	659	69%
SALUDA	10	21%	37	79%
SPARTANBURG	281	26%	815	74%
SUMTER	104	30%	248	70%
UNION	64	37%	109	63%
WILLIAMSBURG	31	25%	95	75%
YORK	227	33%	468	67%
TRANSITIONAL ADM.	2	22%	7	78%
STATE TOTAL	4,331	29%	10,716	71%

Section C
Parole



Parole

The Department is charged with the responsibility of supervising those offenders paroled by the SC Board of Pardons and Paroles. Parole is the conditional release of an individual from imprisonment, but not from the legal custody of the state, to complete his/her sentence outside a correctional institution under conditions and provisions of supervision determined by the Board. Should an individual be granted parole, he/she must agree to abide by certain conditions of community supervision. The violation of any of these conditions is sufficient grounds for revocation of parole by the Board, and the imposition of the remainder of the original sentence of incarceration.

Tables 1-C and 2-C pertain to data on all parole case admissions for FY 06-07. Parole includes regular parole, intensive parole, provisional parole, not guilty by reason of insanity (NGRI), Department of Juvenile Justice, early release and community supervision cases.

Table 1-C shows parole admissions by type of offense. A larger percent of parole admissions, 36%, fall into the violent category, as compared to 2% for probation admissions and 2% for YOA admissions.

Table 2-C describes all parole admissions by gender and race. Parole admissions consisted primarily of males, 88%, with a racial composition of 67% black, 2% other, and 31% white.

Table 3-C and Figure 4 describe active parolees by level of supervision on June 30, 2007. This figure does not include new and unclassified offenders. Among parolees, standard supervision offenders represented 66% of the parolee population, followed by high level at 15%. Intensive supervision accounted for 13% of the parolee population and sex offender supervision was 6%.

Table 4-C presents parole case closures by type (successful or unsuccessful). The overall success rate for parolees (82%) was higher than that of probationers (65%).

Table 5-C describes the parole population by age category.

**S.C. DEPARTMENT OF
PROBATION, PAROLE AND PARDON SERVICES
PAROLE ADMISSIONS BY TYPE OF OFFENSE
TABLE 1-C**

COUNTY	OMNIBUS VIOLENT	PERCENT VIOLENT	NONVIOLENT	PERCENT NONVIOLENT	TOTAL
ABBEVILLE	1	14%	6	86%	7
AIKEN	16	24%	50	76%	66
ALLENDALE	1	25%	3	75%	4
ANDERSON	31	40%	46	60%	77
BAMBERG	4	50%	4	50%	8
BARNWELL	3	30%	7	70%	10
BEAUFORT	6	21%	22	79%	28
BERKELEY	15	38%	25	63%	40
CALHOUN	0	0%	1	100%	1
CHARLESTON	61	52%	56	48%	117
CHEROKEE	9	45%	11	55%	20
CHESTER	7	47%	8	53%	15
CHESTERFIELD	1	8%	11	92%	12
CLARENDON	8	62%	5	38%	13
COLLETON	7	47%	8	53%	15
DARLINGTON	10	56%	8	44%	18
DILLON	5	26%	14	74%	19
DORCHESTER	8	24%	26	76%	34
EDGEFIELD	3	27%	8	73%	11
FAIRFIELD	2	33%	4	67%	6
FLORENCE	14	37%	24	63%	38
GEORGETOWN	11	42%	15	58%	26
GREENVILLE	44	30%	103	70%	147
GREENWOOD	8	38%	13	62%	21
HAMPTON	0	0%	9	100%	9
HORRY	28	31%	61	69%	89
JASPER	3	25%	9	75%	12
KERSHAW	10	59%	7	41%	17
LANCASTER	8	42%	11	58%	19
LAURENS	7	22%	25	78%	32
LEE	2	25%	6	75%	8
LEXINGTON	39	46%	46	54%	85
MCCORMICK	1	25%	3	75%	4
MARION	7	25%	21	75%	28
MARLBORO	9	35%	17	65%	26
NEWBERRY	8	42%	11	58%	19
OCONEE	11	50%	11	50%	22
ORANGEBURG	13	32%	28	68%	41
PICKENS	13	33%	26	67%	39
RICHLAND	59	39%	91	61%	150
SALUDA	2	18%	9	82%	11
SPARTANBURG	43	42%	59	58%	102
SUMTER	23	38%	38	62%	61
UNION	2	13%	13	87%	15
WILLIAMSBURG	7	41%	10	59%	17
YORK	37	32%	80	68%	117
TRANSITIONAL ADM.	11	26%	32	74%	43
STATE TOTAL	618	36%	1,101	64%	1,719

**S.C. DEPARTMENT OF
PROBATION, PAROLE AND PARDON SERVICES
PAROLE ADMISSIONS BY GENDER AND RACE
TABLE 2-C
N=1,719**

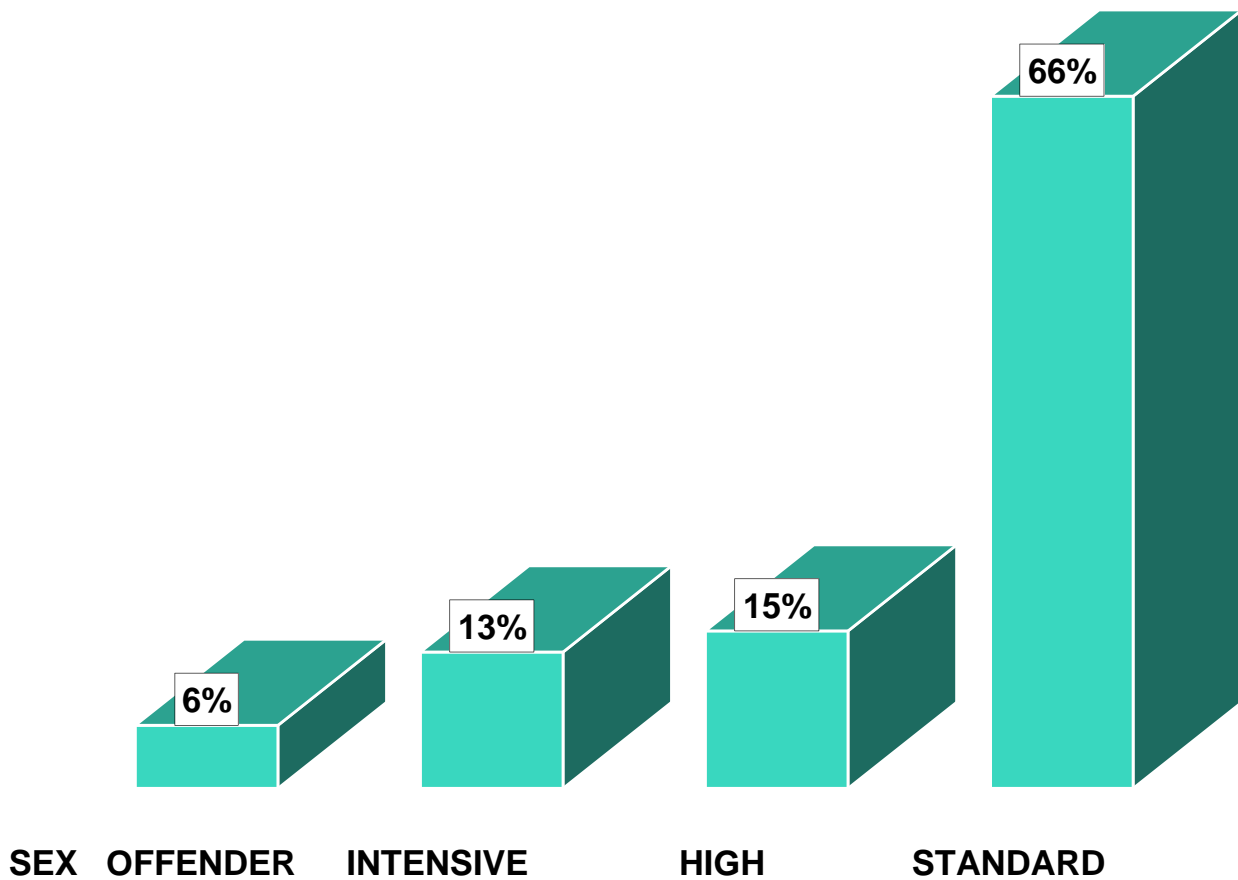
COUNTY	PERCENT MALE	PERCENT FEMALE	PERCENT BLACK	PERCENT OTHER	PERCENT WHITE
ABBEVILLE	100%	0%	86%	0%	14%
AIKEN	92%	8%	55%	0%	45%
ALLENDALE	100%	0%	100%	0%	0%
ANDERSON	84%	16%	50%	1%	50%
BAMBERG	88%	13%	100%	0%	0%
BARNWELL	90%	10%	60%	0%	40%
BEAUFORT	100%	0%	89%	0%	11%
BERKELEY	83%	18%	62%	3%	38%
CALHOUN	100%	0%	0%	0%	100%
CHARLESTON	99%	1%	81%	0%	19%
CHEROKEE	85%	15%	47%	5%	53%
CHESTER	93%	7%	73%	0%	27%
CHESTERFIELD	83%	17%	67%	0%	33%
CLARENDON	100%	0%	75%	8%	25%
COLLETON	93%	7%	73%	0%	27%
DARLINGTON	94%	6%	83%	0%	17%
DILLON	79%	21%	76%	12%	24%
DORCHESTER	88%	12%	50%	0%	50%
EDGEFIELD	64%	36%	82%	0%	18%
FAIRFIELD	100%	0%	83%	0%	17%
FLORENCE	92%	8%	84%	3%	16%
GEORGETOWN	92%	8%	77%	0%	23%
GREENVILLE	80%	20%	56%	2%	44%
GREENWOOD	95%	5%	70%	5%	30%
HAMPTON	78%	22%	89%	0%	11%
HORRY	84%	16%	56%	2%	43%
JASPER	92%	8%	75%	0%	25%
KERSHAW	88%	12%	81%	6%	19%
LANCASTER	95%	5%	58%	0%	42%
LAURENS	75%	25%	59%	0%	41%
LEE	75%	25%	88%	0%	13%
LEXINGTON	87%	13%	53%	0%	47%
MCCORMICK	75%	25%	75%	0%	25%
MARION	96%	4%	93%	0%	7%
MARLBORO	100%	0%	68%	4%	32%
NEWBERRY	89%	11%	74%	0%	26%
OCONEE	95%	5%	55%	0%	45%
ORANGEBURG	85%	15%	83%	0%	18%
PICKENS	85%	15%	30%	5%	70%
RICHLAND	83%	17%	89%	1%	11%
SALUDA	82%	18%	73%	0%	27%
SPARTANBURG	93%	7%	63%	3%	36%
SUMTER	92%	8%	87%	0%	13%
UNION	80%	20%	67%	0%	33%
WILLIAMSBURG	94%	6%	100%	0%	0%
YORK	87%	13%	67%	2%	32%
TRANSITIONAL ADM.	86%	14%	48%	2%	52%
STATE TOTAL	88%	12%	67%	2%	31%

**S.C. DEPARTMENT OF
PROBATION, PAROLE AND PARDON SERVICES
ACTIVE PAROLE OFFENDERS BY LEVEL
OF SUPERVISION, JUNE 30, 2007
TABLE 3-C**

COUNTY	STANDARD	HIGH	INTENSIVE	SEX OFFENDERS	TOTAL
ABBEVILLE	68%	11%	16%	5%	19
AIKEN	72%	14%	10%	4%	146
ALLENDALE	71%	29%	0%	0%	7
ANDERSON	61%	6%	20%	12%	171
BAMBERG	67%	8%	17%	8%	12
BARNWELL	55%	20%	5%	20%	20
BEAUFORT	74%	17%	2%	8%	53
BERKELEY	64%	20%	7%	9%	81
CALHOUN	60%	10%	20%	10%	10
CHARLESTON	59%	21%	12%	8%	249
CHEROKEE	69%	8%	15%	8%	52
CHESTER	62%	7%	24%	7%	29
CHESTERFIELD	63%	21%	11%	5%	19
CLARENDON	88%	4%	0%	8%	26
COLLETON	77%	13%	3%	6%	31
DARLINGTON	83%	6%	9%	2%	53
DILLON	76%	3%	18%	3%	34
DORCHESTER	70%	14%	12%	4%	50
EDGEFIELD	72%	11%	17%	0%	18
FAIRFIELD	77%	15%	8%	0%	13
FLORENCE	70%	17%	7%	6%	137
GEORGETOWN	68%	19%	9%	4%	47
GREENVILLE	59%	19%	16%	6%	348
GREENWOOD	61%	18%	12%	8%	49
HAMPTON	83%	0%	8%	8%	12
HORRY	72%	10%	12%	6%	166
JASPER	67%	7%	22%	4%	27
KERSHAW	60%	14%	12%	14%	42
LANCASTER	56%	21%	18%	6%	34
LAURENS	74%	13%	9%	4%	69
LEE	48%	36%	8%	8%	25
LEXINGTON	62%	19%	14%	5%	158
MCCORMICK	90%	10%	0%	0%	10
MARION	63%	20%	18%	0%	40
MARLBORO	59%	18%	16%	6%	49
NEWBERRY	67%	17%	9%	7%	46
OCONEE	55%	26%	11%	9%	47
ORANGEBURG	81%	5%	7%	6%	110
PICKENS	60%	15%	16%	8%	73
RICHLAND	71%	12%	11%	6%	375
SALUDA	50%	32%	9%	9%	22
SPARTANBURG	64%	17%	16%	3%	217
SUMTER	69%	17%	9%	5%	138
UNION	52%	33%	7%	7%	27
WILLIAMSBURG	53%	26%	17%	4%	47
YORK	64%	10%	19%	8%	220
RESTITUTION CENTERS	83%	0%	17%	0%	6
STATE TOTAL	66%	15%	13%	6%	
ACTIVE PAROLEES	2,396	547	462	229	3,634

ACTIVE PAROLE OFFENDERS BY LEVEL OF SUPERVISION

FIGURE 4



**S.C. DEPARTMENT OF
PROBATION, PAROLE AND PARDON SERVICES
PAROLE CLOSURES BY TYPE
TABLE 4-C**

COUNTY	SUCCESSFUL	SUCCESSFUL RATE	UNSUCCESSFUL	UNSUCCESSFUL RATE
ABBEVILLE	12	100%	0	0%
AIKEN	25	93%	2	7%
ALLENDALE	1	100%	0	0%
ANDERSON	65	81%	15	19%
BAMBERG	7	88%	1	13%
BARNWELL	5	83%	1	17%
BEAUFORT	18	86%	3	14%
BERKELEY	25	78%	7	22%
CALHOUN	1	100%	0	0%
CHARLESTON	53	76%	17	24%
CHEROKEE	15	83%	3	17%
CHESTER	7	88%	1	13%
CHESTERFIELD	9	75%	3	25%
CLARENDON	10	91%	1	9%
COLLETON	5	71%	2	29%
DARLINGTON	15	88%	2	12%
DILLON	12	75%	4	25%
DORCHESTER	22	92%	2	8%
EDGEFIELD	7	100%	0	0%
FAIRFIELD	8	100%	0	0%
FLORENCE	35	80%	9	20%
GEORGETOWN	19	70%	8	30%
GREENVILLE	107	78%	30	22%
GREENWOOD	19	79%	5	21%
HAMPTON	5	71%	2	29%
HORRY	44	85%	8	15%
JASPER	9	90%	1	10%
KERSHAW	13	87%	2	13%
LANCASTER	7	70%	3	30%
LAURENS	25	81%	6	19%
LEE	5	71%	2	29%
LEXINGTON	47	87%	7	13%
MCCORMICK	1	100%	0	0%
MARION	12	71%	5	29%
MARLBORO	17	85%	3	15%
NEWBERRY	16	89%	2	11%
OCONEE	15	79%	4	21%
ORANGEBURG	26	84%	5	16%
PICKENS	15	83%	3	17%
RICHLAND	105	82%	23	18%
SALUDA	4	80%	1	20%
SPARTANBURG	65	70%	28	30%
SUMTER	45	83%	9	17%
UNION	14	78%	4	22%
WILLIAMSBURG	9	69%	4	31%
YORK	57	79%	15	21%
TRANSITIONAL ADMIN.	66	99%	1	1%
STATE TOTAL	1124	82%	254	18%

**S.C. DEPARTMENT OF
PROBATION, PAROLE AND PARDON SERVICES
PAROLE ADMISSIONS BY AGE
TABLE 5-C**

COUNTY	Age 24 & Under	Percent 24 & Under	Age 25 & Over	Percent 25 & Over
ABBEVILLE	1	14%	6	86%
AIKEN	7	11%	59	89%
ALLENDALE	0	0%	4	100%
ANDERSON	11	14%	66	86%
BAMBERG	1	13%	7	88%
BARNWELL	2	20%	8	80%
BEAUFORT	3	11%	25	89%
BERKELEY	3	8%	37	93%
CALHOUN	0	0%	1	100%
CHARLESTON	20	17%	97	83%
CHEROKEE	2	10%	18	90%
CHESTER	2	13%	13	87%
CHESTERFIELD	2	17%	10	83%
CLARENDON	2	15%	11	85%
COLLETON	2	13%	13	87%
DARLINGTON	2	11%	16	89%
DILLON	3	16%	16	84%
DORCHESTER	5	15%	29	85%
EDGEFIELD	0	0%	11	100%
FAIRFIELD	2	33%	4	67%
FLORENCE	4	11%	34	89%
GEORGETOWN	4	15%	22	85%
GREENVILLE	15	10%	132	90%
GREENWOOD	2	10%	19	90%
HAMPTON	3	33%	6	67%
HORRY	17	19%	72	81%
JASPER	1	8%	11	92%
KERSHAW	3	18%	14	82%
LANCASTER	3	16%	16	84%
LAURENS	5	16%	27	84%
LEE	1	13%	7	88%
LEXINGTON	13	15%	72	85%
MCCORMICK	0	0%	4	100%
MARION	1	4%	27	96%
MARLBORO	4	15%	22	85%
NEWBERRY	4	21%	15	79%
OCONEE	6	27%	16	73%
ORANGEBURG	6	15%	35	85%
PICKENS	8	21%	31	79%
RICHLAND	24	16%	126	84%
SALUDA	2	18%	9	82%
SPARTANBURG	11	11%	91	89%
SUMTER	17	28%	44	72%
UNION	2	13%	13	87%
WILLIAMSBURG	2	12%	15	88%
YORK	14	12%	103	88%
TRANSITIONAL ADM.	6	14%	37	86%
STATE TOTAL	248	14%	1471	86%

Section D
Youthful Offender



Youthful Offender Conditional Release

Inmates ages 17 through 24, sentenced under the state's Youthful Offender Act (YOA) to an indeterminate period of incarceration (not to exceed six years) within the S.C. Department of Corrections (SCDC), may be conditionally released prior to that time, based on offense, category, adjustment and evaluation while incarcerated. While under SCDPPPS supervision, these offenders remain under the jurisdiction of SCDC.

Tables 1-D and 2-D present data on all YOA case admissions for FY 06-07.

Table 1-D displays YOA admissions by type of offense. YOA violent admissions at 2% are the same for those admitted to probation at 2%.

Table 2-D illustrates YOA admissions by gender and race. YOA admissions were predominately male (97%) and black (72%).

Table 3-D and Figure 5 describe the active population for YOA conditional release in terms of level of supervision on June 30, 2007. Twenty-one percent (21%) are supervised at a high level. Intensive level supervision accounted for 22%, while 55% are supervised at standard level and 2% at the sex offender level.

Table 4-D shows YOA offenders are more inclined to close unsuccessfully (55%) than parolees (18%).

Table 5-D describes YOA admissions by age category.

**S.C. DEPARTMENT OF
PROBATION, PAROLE AND PARDON SERVICES
YOA ADMISSIONS BY TYPE OF OFFENSE
TABLE 1-D**

COUNTY	OMNIBUS VIOLENT	PERCENT VIOLENT	NONVIOLENT	PERCENT NONVIOLENT	TOTAL
ABBEVILLE	0	0%	3	100%	3
AIKEN	1	4%	24	96%	25
ALLENDALE	0	0%	14	100%	14
ANDERSON	0	0%	33	100%	33
BAMBERG	0	0%	4	100%	4
BARNWELL	0	0%	5	100%	5
BEAUFORT	0	0%	20	100%	20
BERKELEY	0	0%	57	100%	57
CALHOUN	0	0%	6	100%	6
CHARLESTON	6	3%	201	97%	207
CHEROKEE	0	0%	22	100%	22
CHESTER	0	0%	9	100%	9
CHESTERFIELD	0	0%	21	100%	21
CLARENDON	0	0%	10	100%	10
COLLETON	1	6%	17	94%	18
DARLINGTON	0	0%	15	100%	15
DILLON	0	0%	20	100%	20
DORCHESTER	0	0%	50	100%	50
EDGEFIELD	0	0%	6	100%	6
FAIRFIELD	1	13%	7	88%	8
FLORENCE	1	2%	63	98%	64
GEORGETOWN	0	0%	20	100%	20
GREENVILLE	0	0%	69	100%	69
GREENWOOD	0	0%	20	100%	20
HAMPTON	0	0%	6	100%	6
HORRY	0	0%	40	100%	40
JASPER	0	0%	11	100%	11
KERSHAW	0	0%	18	100%	18
LANCASTER	0	0%	20	100%	20
LAURENS	1	4%	25	96%	26
LEE	0	0%	8	100%	8
LEXINGTON	1	2%	43	98%	44
MCCORMICK	0	0%	5	100%	5
MARION	0	0%	20	100%	20
MARLBORO	0	0%	14	100%	14
NEWBERRY	0	0%	10	100%	10
OCONEE	0	0%	13	100%	13
ORANGEBURG	0	0%	35	100%	35
PICKENS	0	0%	13	100%	13
RICHLAND	3	3%	100	97%	103
SALUDA	1	14%	6	86%	7
SPARTANBURG	1	1%	82	99%	83
SUMTER	1	2%	54	98%	55
UNION	0	0%	15	100%	15
WILLIAMSBURG	1	5%	20	95%	21
YORK	2	3%	69	97%	71
TRANSITIONAL ADM.	2	7%	25	93%	27
STATE TOTAL	23	2%	1,368	98%	1,391

**S.C. DEPARTMENT OF
PROBATION, PAROLE AND PARDON SERVICES
YOA ADMISSIONS BY GENDER AND RACE
TABLE 2-D
N=1,391**

COUNTY	PERCENT MALE	PERCENT FEMALE	PERCENT BLACK	PERCENT OTHER	PERCENT WHITE
ABBEVILLE	100%	0%	67%	0%	33%
AIKEN	100%	0%	60%	0%	40%
ALLENDALE	100%	0%	100%	0%	0%
ANDERSON	94%	6%	39%	0%	61%
BAMBERG	100%	0%	75%	0%	25%
BARNWELL	100%	0%	60%	0%	40%
BEAUFORT	95%	5%	75%	0%	25%
BERKELEY	100%	0%	56%	0%	44%
CALHOUN	100%	0%	67%	0%	33%
CHARLESTON	97%	3%	92%	0%	7%
CHEROKEE	95%	5%	36%	0%	64%
CHESTER	100%	0%	44%	0%	56%
CHESTERFIELD	100%	0%	86%	0%	14%
CLARENDON	100%	0%	100%	0%	0%
COLLETON	100%	0%	61%	0%	39%
DARLINGTON	93%	7%	73%	0%	27%
DILLON	100%	0%	80%	5%	15%
DORCHESTER	92%	8%	64%	0%	36%
EDGEFIELD	100%	0%	100%	0%	0%
FAIRFIELD	100%	0%	88%	0%	13%
FLORENCE	94%	6%	88%	0%	13%
GEORGETOWN	100%	0%	75%	0%	25%
GREENVILLE	93%	7%	52%	1%	46%
GREENWOOD	95%	5%	70%	0%	30%
HAMPTON	100%	0%	83%	0%	17%
HORRY	98%	3%	63%	5%	33%
JASPER	100%	0%	91%	0%	9%
KERSHAW	100%	0%	72%	6%	22%
LANCASTER	95%	5%	55%	5%	40%
LAURENS	96%	4%	54%	4%	42%
LEE	100%	0%	100%	0%	0%
LEXINGTON	100%	0%	45%	0%	55%
MCCORMICK	100%	0%	100%	0%	0%
MARION	100%	0%	95%	0%	5%
MARLBORO	100%	0%	93%	0%	7%
NEWBERRY	90%	10%	90%	0%	10%
OCONEE	92%	8%	23%	0%	77%
ORANGEBURG	91%	9%	89%	0%	11%
PICKENS	92%	8%	8%	0%	92%
RICHLAND	91%	9%	89%	0%	11%
SALUDA	100%	0%	100%	0%	0%
SPARTANBURG	99%	1%	63%	0%	37%
SUMTER	98%	2%	85%	2%	13%
UNION	100%	0%	27%	0%	73%
WILLIAMSBURG	100%	0%	90%	0%	10%
YORK	97%	3%	56%	1%	42%
TRANSITIONAL ADM.	100%	0%	48%	0%	52%
STATE TOTAL	97%	3%	72%	1%	28%

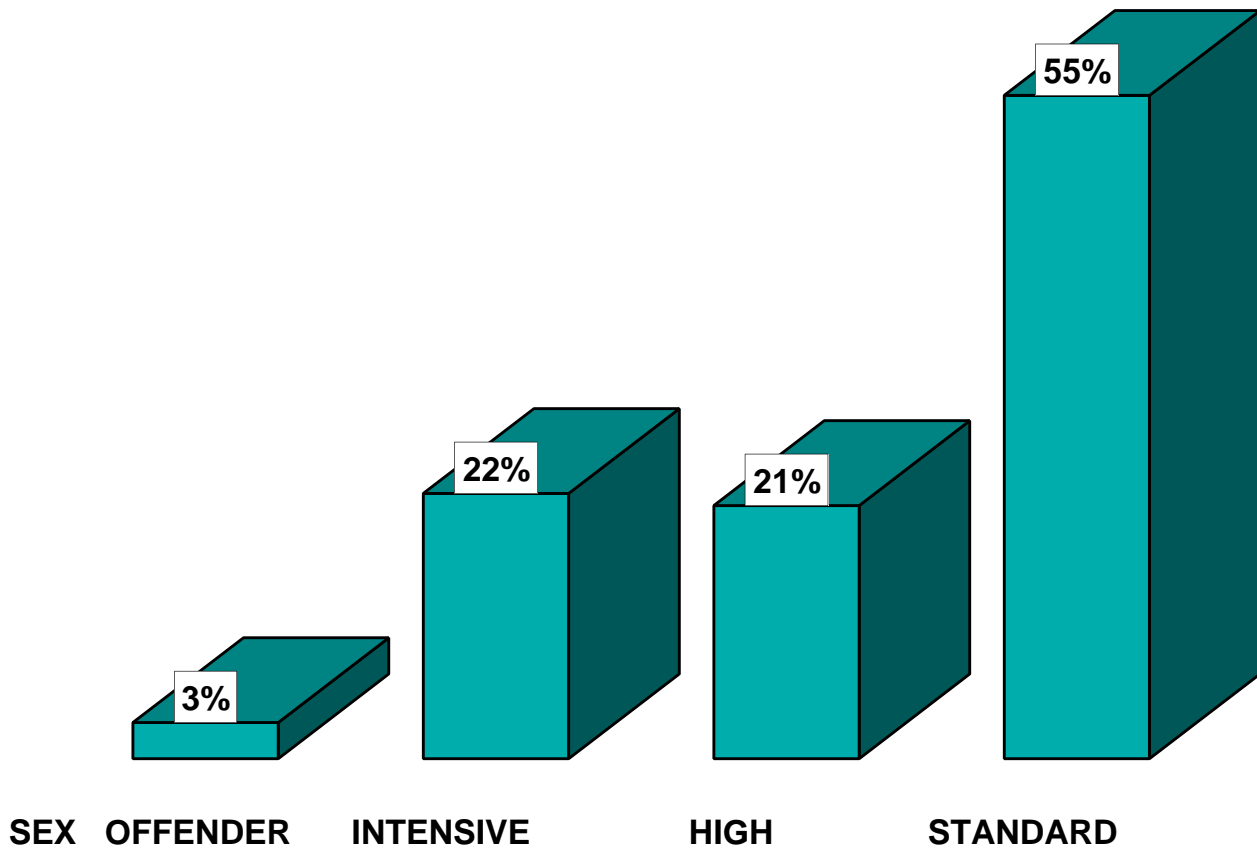
Percent may not equal 100 due to rounding.

**S.C. DEPARTMENT OF
PROBATION, PAROLE AND PARDON SERVICES
ACTIVE YOA OFFENDERS BY LEVEL
OF SUPERVISION, JUNE 30, 2005
TABLE 3-D**

COUNTY	ADMIN	HIGH	INTENSIVE	SEX OFFENDER	TOTAL
ABBEVILLE	83%	17%	0%	0%	6
AIKEN	71%	16%	10%	3%	73
ALLENDALE	36%	50%	7%	7%	14
ANDERSON	62%	12%	21%	5%	58
BAMBERG	60%	0%	40%	0%	5
BARNWELL	92%	8%	0%	0%	13
BEAUFORT	48%	22%	30%	0%	27
BERKELEY	59%	24%	13%	4%	94
CALHOUN	33%	33%	33%	0%	9
CHARLESTON	39%	35%	24%	1%	269
CHEROKEE	44%	17%	19%	19%	36
CHESTER	62%	0%	38%	0%	13
CHESTERFIELD	48%	20%	32%	0%	25
CLARENDON	43%	29%	29%	0%	14
COLLETON	44%	21%	21%	15%	34
DARLINGTON	57%	14%	24%	5%	21
DILLON	88%	0%	12%	0%	17
DORCHESTER	56%	21%	21%	1%	80
EDGEFIELD	62%	31%	8%	0%	13
FAIRFIELD	73%	18%	9%	0%	11
FLORENCE	56%	15%	28%	1%	72
GEORGETOWN	64%	14%	18%	4%	28
GREENVILLE	54%	21%	21%	3%	145
GREENWOOD	57%	29%	6%	9%	35
HAMPTON	63%	13%	25%	0%	16
HORRY	59%	19%	19%	3%	58
JASPER	64%	14%	23%	0%	22
KERSHAW	28%	56%	17%	0%	18
LANCASTER	57%	27%	17%	0%	30
LAURENS	57%	11%	25%	7%	44
LEE	29%	21%	43%	7%	14
LEXINGTON	43%	21%	33%	3%	58
MCCORMICK	50%	50%	0%	0%	2
MARION	33%	22%	44%	0%	18
MARLBORO	48%	43%	10%	0%	21
NEWBERRY	47%	33%	13%	7%	15
OCONEE	48%	38%	7%	7%	29
ORANGEBURG	73%	10%	17%	0%	81
PICKENS	50%	33%	8%	8%	24
RICHLAND	69%	13%	17%	0%	208
SALUDA	17%	50%	33%	0%	6
SPARTANBURG	37%	19%	41%	3%	68
SUMTER	58%	13%	29%	0%	69
UNION	53%	24%	18%	6%	17
WILLIAMSBURG	44%	20%	36%	0%	25
YORK	60%	13%	25%	2%	97
RESTITUTION CENTERS	33%	0%	67%	0%	12
STATE TOTAL	55%	21%	22%	3%	
ACTIVE YOA OFFENDERS	1,126	433	449	56	2,064

ACTIVE YOA OFFENDERS BY LEVEL OF SUPERVISION

FIGURE 5



**S.C. DEPARTMENT OF
PROBATION, PAROLE AND PARDON SERVICES
YOA CLOSURES BY TYPE
TABLE 4-D**

COUNTY	SUCCESSFUL	SUCCESSFUL RATE	UNSUCCESSFUL	UNSUCCESSFUL RATE
ABBEVILLE	2	100%	0	0%
AIKEN	8	40%	12	60%
ALLENDALE	1	25%	3	75%
ANDERSON	19	59%	13	41%
BAMBERG	4	80%	1	20%
BARNWELL	5	45%	6	55%
BEAUFORT	7	70%	3	30%
BERKELEY	29	60%	19	40%
CALHOUN	0	0%	4	100%
CHARLESTON	63	35%	115	65%
CHEROKEE	7	54%	6	46%
CHESTER	6	50%	6	50%
CHESTERFIELD	10	40%	15	60%
CLARENDON	5	50%	5	50%
COLLETON	2	14%	12	86%
DARLINGTON	8	32%	17	68%
DILLON	9	56%	7	44%
DORCHESTER	14	38%	23	62%
EDGEFIELD	4	57%	3	43%
FAIRFIELD	0	0%	4	100%
FLORENCE	24	45%	29	55%
GEORGETOWN	14	54%	12	46%
GREENVILLE	27	47%	30	53%
GREENWOOD	19	56%	15	44%
HAMPTON	0	0%	1	100%
HORRY	26	62%	16	38%
JASPER	3	27%	8	73%
KERSHAW	2	20%	8	80%
LANCASTER	9	50%	9	50%
LAURENS	10	36%	18	64%
LEE	0	0%	4	100%
LEXINGTON	9	47%	10	53%
MCCORMICK	1	0%	1	0%
MARION	6	35%	11	65%
MARLBORO	7	41%	10	59%
NEWBERRY	10	59%	7	41%
OCONEE	12	67%	6	33%
ORANGEBURG	21	57%	16	43%
PICKENS	7	37%	12	63%
RICHLAND	34	40%	52	60%
SALUDA	7	64%	4	36%
SPARTANBURG	13	19%	54	81%
SUMTER	8	27%	22	73%
UNION	5	50%	5	50%
WILLIAMSBURG	2	15%	11	85%
YORK	45	68%	21	32%
TRANSITIONAL ADMIN	14	93%	1	7%
STATE TOTAL	538	45%	667	55%

**S.C. DEPARTMENT OF
PROBATION, PAROLE AND PARDON SERVICES
YOA ADMISSIONS BY AGE
TABLE 5-D**

COUNTY	Age 24 & Under	Percent 24 & Under	Age 25 & Over	Percent 25 & Over
ABBEVILLE	2	67%	1	33%
AIKEN	23	92%	2	8%
ALLENDALE	8	57%	6	43%
ANDERSON	29	88%	4	12%
BAMBERG	4	100%	0	0%
BARNWELL	5	100%	0	0%
BEAUFORT	20	100%	0	0%
BERKELEY	44	77%	13	23%
CALHOUN	4	67%	2	33%
CHARLESTON	162	78%	45	22%
CHEROKEE	16	73%	6	27%
CHESTER	9	100%	0	0%
CHESTERFIELD	17	81%	4	19%
CLARENDON	7	70%	3	30%
COLLETON	15	83%	3	17%
DARLINGTON	13	87%	2	13%
DILLON	17	85%	3	15%
DORCHESTER	34	68%	16	32%
EDGEFIELD	6	100%	0	0%
FAIRFIELD	6	75%	2	25%
FLORENCE	56	88%	8	13%
GEORGETOWN	19	95%	1	5%
GREENVILLE	52	75%	17	25%
GREENWOOD	15	75%	5	25%
HAMPTON	4	67%	2	33%
HORRY	35	88%	5	13%
JASPER	10	91%	1	9%
KERSHAW	16	89%	2	11%
LANCASTER	17	85%	3	15%
LAURENS	19	73%	7	27%
LEE	7	88%	1	13%
LEXINGTON	38	86%	6	14%
MCCORMICK	4	80%	1	20%
MARION	18	90%	2	10%
MARLBORO	12	86%	2	14%
NEWBERRY	7	70%	3	30%
OCONEE	10	77%	3	23%
ORANGEBURG	31	89%	4	11%
PICKENS	10	77%	3	23%
RICHLAND	87	84%	16	16%
SALUDA	7	100%	0	0%
SPARTANBURG	65	78%	18	22%
SUMTER	49	89%	6	11%
UNION	10	67%	5	33%
WILLIAMSBURG	18	86%	3	14%
YORK	62	87%	9	13%
TRANSITIONAL ADM.	22	81%	5	19%
STATE TOTAL	1,141	82%	250	18%

Section E
Violations



Violations

Offenders charged by their supervising Agents with violations of the conditions of supervision are reviewed through an administrative hearing process to determine if probable cause of a violation exists. If a violation is found, a determination is made as to which community sanctions should be imposed, or whether the case should be referred to the Board or the Court for revocation action.

Table 1-E provides data by county on the violation process. Statewide, a total of 7,457 violation hearings were held. At those hearings, 3,965 cases were continued or recommended for continuation, while 3,492 cases were revoked or recommended for revocation.

Table 2-E provides a comparison of changes in active population and the type of closure for FY 03 to FY 07.

**S.C. DEPARTMENT OF
PROBATION, PAROLE AND PARDON SERVICES
VIOLATIONS BY COUNTY
TABLE 1-E**

COUNTY	CASES HEARD	CASES CONTINUED OR RECOMMENDED FOR CONTINUATION	CASES REVOKED OR RECOMMENDED FOR REVOCATION
ABBEVILLE	5	5	0
AIKEN	319	176	143
ALLENDALE	48	20	28
ANDERSON	460	334	126
BAMBERG	37	17	20
BARNWELL	67	28	39
BEAUFORT	46	20	26
BERKELEY	222	102	120
CALHOUN	100	19	81
CHARLESTON	899	277	622
CHEROKEE	108	75	33
CHESTER	36	22	14
CHESTERFIELD	53	24	29
CLARENDON	50	21	29
COLLETON	97	35	62
DARLINGTON	64	30	34
DILLON	47	20	27
DORCHESTER	207	101	106
EDGEFIELD	60	39	21
FAIRFIELD	42	21	21
FLORENCE	229	126	103
GEORGETOWN	85	23	62
GREENVILLE	983	727	256
GREENWOOD	124	73	51
HAMPTON	24	8	16
HORRY	105	61	44
JASPER	75	42	33
KERSHAW	95	55	40
LANCASTER	89	36	53
LAURENS	99	28	71
LEE	16	3	13
LEXINGTON	302	212	90
MCCORMICK	40	21	19
MARION	40	11	29
MARLBORO	41	14	27
NEWBERRY	118	51	67
OCONEE	76	42	34
ORANGEBURG	298	187	111
PICKENS	118	70	48
RICHLAND	503	246	257
SALUDA	56	29	27
SPARTANBURG	518	266	252
SUMTER	149	76	73
UNION	51	29	22
WILLIAMSBURG	55	23	32
YORK	201	120	81
STATE TOTAL	7,457	3,965	3,492

**SC DEPARTMENT OF
PROBATION, PAROLE AND PARDON SERVICES
CLOSING BY TYPE
TABLE 2-E**

	FY 06-07							Total Unsuccessful
	Active Population	Successful	Exp-I ¹	JC-I ²	Rev-C ³	Rev-T ⁴	Rev-TC ⁵	
Probation	26,578	9,061	24	35	603	4,122	115	4,899
Parole	3,634	737	17	0	20	184	9	230
YOA	2,064	538	14	0	81	534	38	667
Other Releases	1,373	387	19	0	0	5	0	24
Total	33,649	10,723	74	35	704	4,845	162	5,820
% Unsuccessful			1.3%	0.6%	12.1%	83.2%	2.8%	

	FY 05-06							Total Unsuccessful
	Active Population	Successful	Exp-I ¹	JC-I ²	Rev-C ³	Rev-T ⁴	Rev-TC ⁵	
Probation	26,462	9,539	42	35	556	4,494	124	5,251
Parole	2,578	871	6	0	25	237	14	282
YOA	2,088	572	5	0	74	613	56	748
Other Releases	1,308	419	15	0	0	7	0	22
Total	32,436	11,401	68	35	655	5,351	194	6,303
% Unsuccessful			1.1%	0.6%	10.4%	84.9%	3.1%	

	FY 04-05							Total Unsuccessful
	Active Population	Successful	Exp-I ¹	JC-I ²	Rev-C ³	Rev-T ⁴	Rev-TC ⁵	
Probation	26,955	9,522	21	24	513	4,399	99	5,056
Parole	2,848	907	8	0	29	235	13	285
YOA	2,191	662	11	0	72	597	40	720
Other Releases	1,047	422	10	0	0	17	0	27
Total	33,041	11,513	50	24	614	5,248	152	6,088
% Unsuccessful			0.8%	0.4%	10.1%	86.2%	2.5%	

	FY 03-04							Total Unsuccessful
	Active Population	Successful	Exp-I ¹	JC-I ²	Rev-C ³	Rev-T ⁴	Rev-TC ⁵	
Probation	27,172	10,835	19	21	504	4,786	89	5,419
Parole	2,840	943	14	0	27	306	7	354
YOA	2,314	499	4	0	85	648	36	773
Other Releases	779	351	5	0	0	21	0	26
Total	33,105	12,628	42	21	616	5,761	132	6,572
% Unsuccessful			0.6%	0.3%	9.4%	87.7%	2.0%	

	FY 02-03							Total Unsuccessful
	Active Population	Successful	Exp-I ¹	JC-I ²	Rev-C ³	Rev-T ⁴	Rev-TC ⁵	
Probation	28,090	11,320	18	34	553	4,650	82	5,337
Parole	2,898	984	13	0	50	322	9	394
YOA	2,104	554	5	0	106	642	62	815
Other Releases	617	328	4	0	0	36	0	40
Total	33,709	13,190	40	34	709	5,650	153	6,586
% Unsuccessful			0.6%	0.5%	10.8%	85.8%	2.3%	

Footnotes:

- ¹ Exp-I - Expired Offender in Institution
- ² JC-I - Judicial Closure in Institution
- ³ Rev-C - Revoke, New Conviction
- ⁴ Rev-T - Revoke, Technical Charges
- ⁵ Rev TC - Revoke, Technical Charges & New Charges Pending

Summary



Summary

Chart 1 summarizes the population characteristics of SCDPPPS offenders by supervision programs, Probation, Parole and YOA as well as offender involvement in drug testing.

The proportion of violent offenses among YOA admissions and probationers during FY 06-07 was the same at 2%, with the percentage of violent offenses for parole admissions at 36%, higher than for any other offender category.

Overall, the most utilized level of supervision was standard (69%), followed by high (23%), intensive (4%) and sex offender (3%) for all cases.

The overall success rate for closures was 65% during the fiscal year. The overall success rate for parolees was 82%. Both probationers (65%) and YOA offenders (45%), had less successful closures rates than parolees.

Of the 16,905 offenders that were tested for drug use while under supervision, 6,801, or 40.23%, tested positive for drugs.

Chart 2 compares the number of admissions for each fiscal year from 1987 to 2007. Admissions decreased for FY 06-07 by 4.8% from the previous fiscal year.

Chart 3 displays violent admissions by program for fiscal year 1993 to 2007. Due to the small number of Department of Juvenile Justice, early release and community release offenders for FY 06-07, they were included in parole. YOA offenders showed a slight increase in violent admissions over the previous fiscal year while the percentage of Parole violent admissions continues to increase.

**S.C. DEPARTMENT OF
PROBATION, PAROLE AND PARDON SERVICES
POPULATION CHARACTERISTICS
CHART 1**

ADMISSIONS

<u>CATEGORY:</u>	Probation		Parole		YOA		Total	
	FY 06	FY 07	FY 06	FY 07	FY 06	FY 07	FY 06	FY 07
<u>RACE:</u>								
BLACK	50%	51%	66%	67%	71%	72%	53%	54%
WHITE	48%	47%	33%	31%	29%	28%	45%	44%
OTHER	2%	2%	1%	2%	1%	1%	2%	2%
<u>GENDER:</u>								
MALE	78%	79%	89%	88%	96%	97%	81%	81%
FEMALE	22%	21%	11%	12%	4%	3%	19%	19%
<u>OFFENSE TYPE:</u>								
VIOLENT	3%	2%	33%	36%	3%	2%	6%	5%
NON-VIOLENT	97%	98%	67%	64%	97%	98%	94%	95%

ACTIVES

<u>LEVEL OF SUPERVISION:</u>	FY 06	FY 07	FY 06	FY 07	FY 06	FY 07	FY 06	FY 07
STANDARD	72%	71%	67%	66%	56%	55%	70%	69%
HIGH RISK	23%	25%	15%	15%	20%	21%	22%	23%
INTENSIVE	2%	2%	12%	13%	21%	22%	4%	4%
SEX OFFENDER	3%	3%	6%	6%	2%	3%	3%	3%

CLOSURES

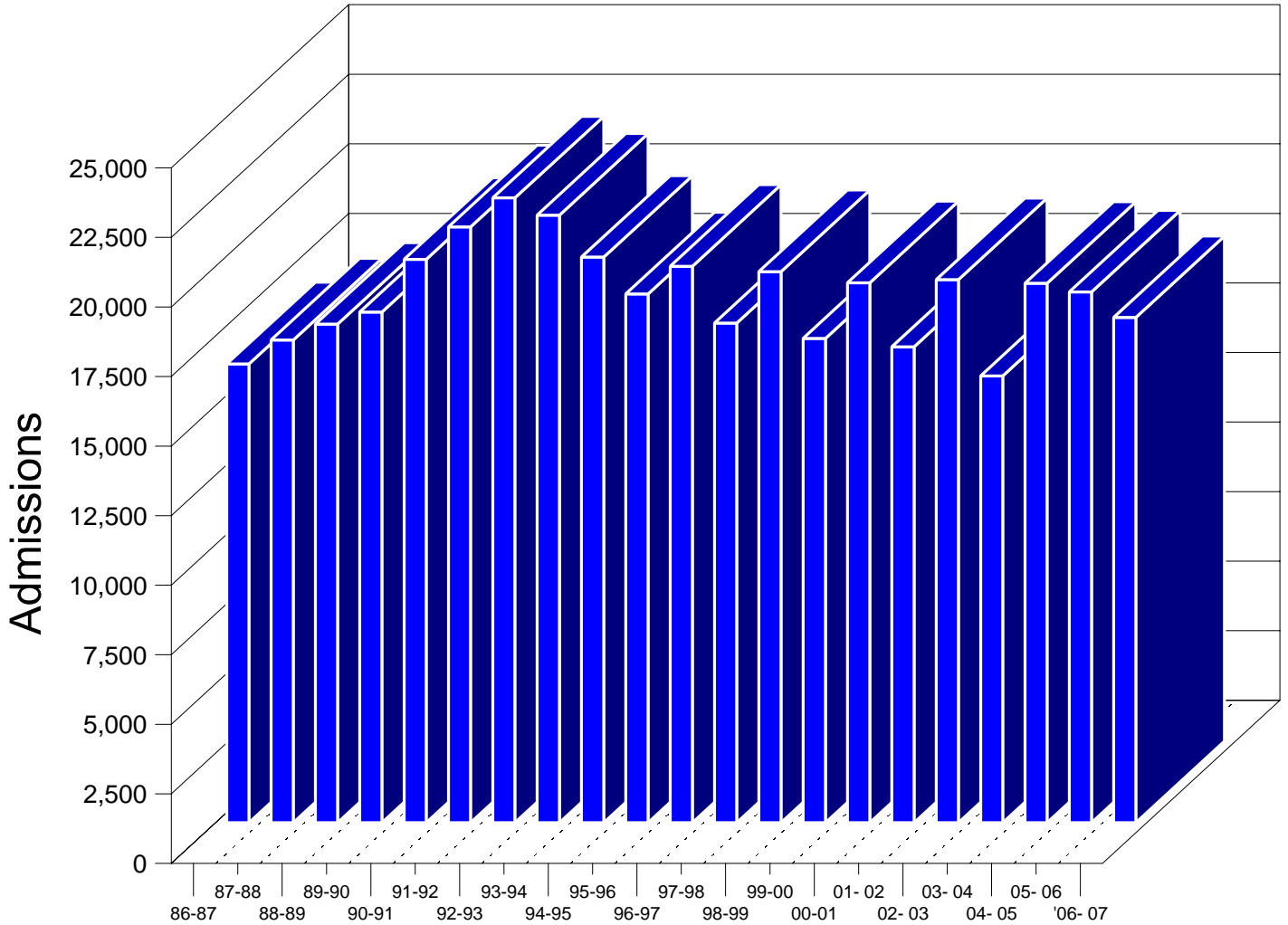
<u>CASE OUTCOME:</u>	FY 06	FY 07	FY 06	FY 07	FY 06	FY 07	FY 06	FY 07
SUCCESSFUL	64%	65%	81%	82%	43%	45%	64%	65%
UNSUCCESSFUL	36%	35%	19%	18%	57%	55%	36%	35%

DRUG TESTING

	<u>FY 06</u>	<u>FY 07</u>
INDIVIDUAL OFFENDERS TESTED	18,352	16,905
INDIVIDUALS TESTING POSITIVE	7,422	6,801
% OF INDIVIDUAL OFFENDERS TESTING POSITIVE	40.44%	40.23%
TOTAL POSITIVE TESTS	12,756	11,780
NUMBER OF TIMES OFFENDERS TESTED	28,804	26,405

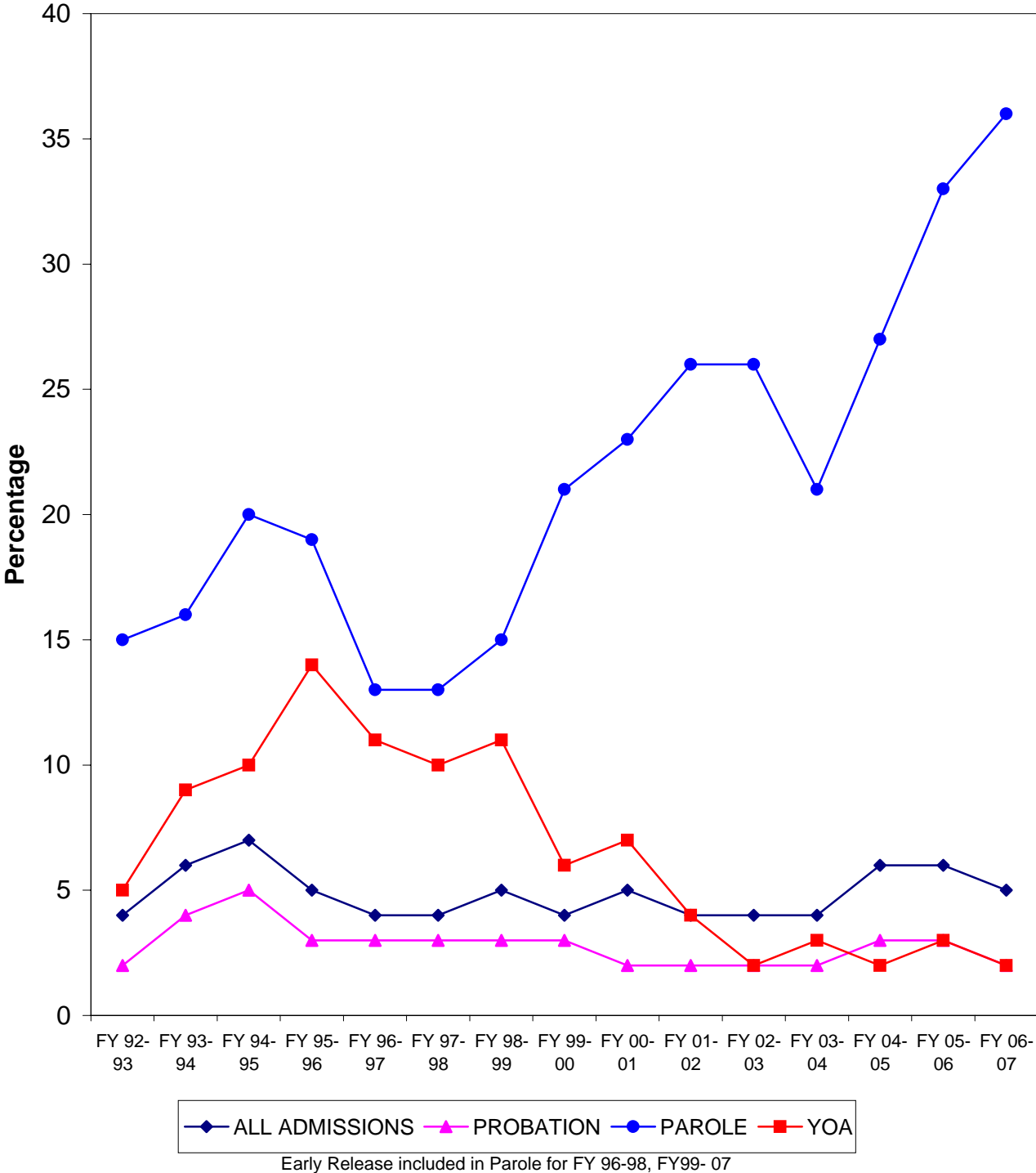
ADMISSIONS COMPARING 1987 - 2007

CHART 2



VIOLENT ADMISSIONS BY PROGRAM AND FISCAL YEAR

Chart 3



S.C. DEPARTMENT OF PROBATION, PAROLE AND PARDON SERVICES

Samuel B. Glover, Director

Office of Executive Programs

Rhonda Grant - Director

Tony Dukes - Research Director

Marchar P. Stagg - Statistical & Research Analyst