

D4925  
2. I81  
copy 1

IVA

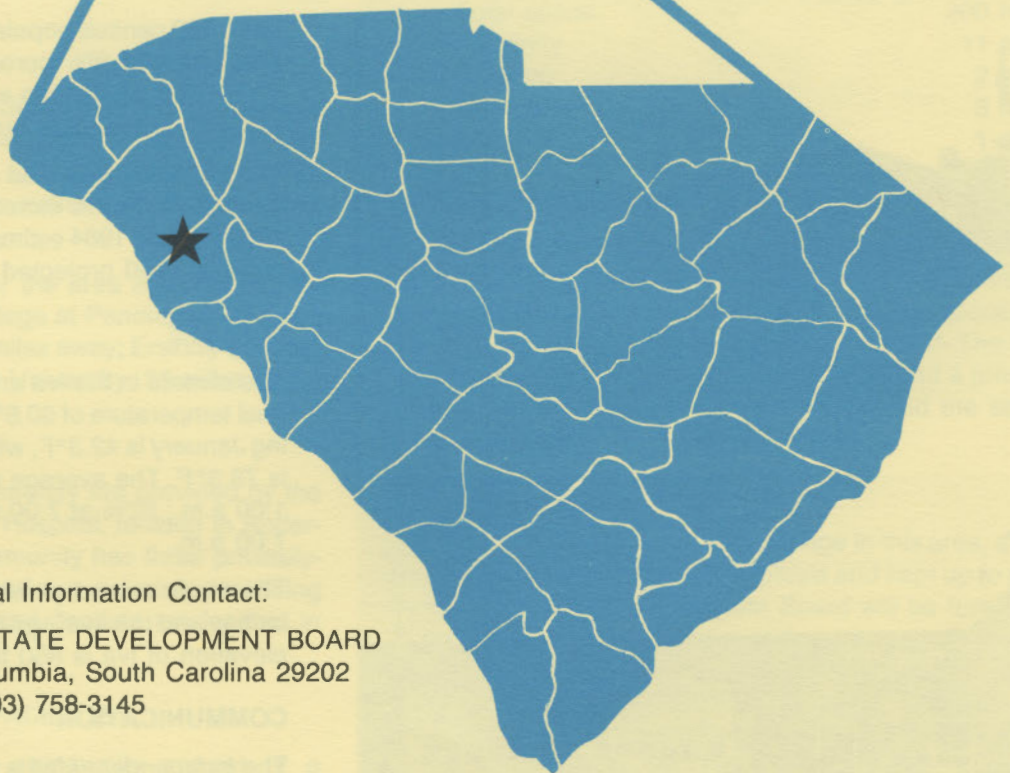
# south carolina



S. C. STATE LIBRARY

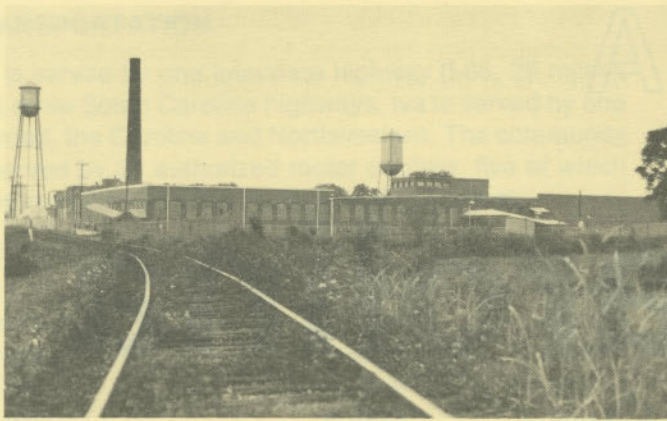
MAR 7 1985

STATE DOCUMENTS



For Additional Information Contact:

SOUTH CAROLINA STATE DEVELOPMENT BOARD  
P. O. Box 927, Columbia, South Carolina 29202  
(803) 758-3145



Jackson Mills



Crescent High School



United States Post Office



Iva Town Hall  
Fire Department

## LOCATION

As depicted on the cover, Iva is in the northwestern section of the state in Anderson County. Charleston, South Carolina's busiest port, is 207 miles southeast. Columbia is 107 miles southeast and Greenville is 43 miles northeast. Iva is 105 miles northeast of Atlanta; 751 miles south of New York; and 2,628 miles east of San Francisco.



## POPULATION

The 1980 census population of the city of Iva was 1,369. This was a 22.9% increase from the 1970 population of 1,114. The population within a 15-mile radius is 92,215 and within a 30-mile radius is 291,631.

Anderson County had a 1980 census population of 133,235, a 26.3% increase from the 1970 population of 105,474. The 1984 estimated county population is 146,803 and the 1990 projected population is 170,100.

## CLIMATE

The climate in the Iva area is temperate with a mean annual temperature of 60.6°F. The average temperature during January is 42.3°F, while the average July temperature is 78.3°F. The average relative humidity daily is 78% at 1:00 a.m.; 82% at 7:00 a.m.; 54% at 1:00 p.m.; 64% at 7:00 p.m.

The mean annual precipitation in the Iva area is 47.54 inches and the average growing season is 225 days. The elevation of Iva is 850 feet above sea level.

## COMMUNICATION

The *Independent-Mail* is published daily in Anderson, the county seat. Radio stations WAIM-AM, WANS-AM/FM and WCKN-FM broadcast from Anderson. Television reception in the community is available from four stations, representing the three major networks. Telephone service in the community is provided by West Carolina Rural Telephone Corporation.

## GOVERNMENT

The community has a mayor-council form of municipal government. The four city council members, including the mayor, are elected for two-year terms. Anderson County is governed locally by a council-administrator, with the five council members elected for two-year terms.

## POLICE AND FIRE

The Iva Police Department has five full-time police officers. The department operates three radio equipped patrol cars. The Iva Fire Department has 30 volunteer firemen who operate three pumper trucks and one tank truck. Iva's insurance rating is Class 5.

## FINANCIAL INSTITUTIONS

Iva has one bank to serve the financial needs of the community. The bank has total assets of \$21.0 million. Additional banks and savings and loan associations are located in Anderson, 17 miles away.

## HOTELS & MOTELS

Iva has one motel with 10 overnight accommodations. There are 13 motels and hotels within 25 minutes driving time of Iva, with a total of 750 overnight accommodations.

## CHURCHES

Iva has seven Protestant churches. Catholic churches and a Jewish house of worship are located in Anderson, 17 miles from Iva.

## EDUCATION

Iva, which is included in Anderson District 3, has one elementary school and one high school. The student/teacher ratio is 16.7 to 1, with 77 teachers and 1,286 students. Private schooling is available in Anderson, 17 miles away.

Higher education facilities for the area are provided by the Tri-County Technical College at Pendleton, 30 miles away; Anderson College, 17 miles away; Erskine College, 17 miles away; and Clemson University, 33 miles away.

## MEDICAL SERVICES

Medical services for the community are provided by the 508-bed Anderson Memorial Hospital, located in Anderson, 17 miles away. The community has three privately-practicing medical doctors and two privately-practicing dentists. Additional doctors and dentists are located in Anderson.

## RECREATION AND CIVIC FACILITIES

Recreation facilities in the community consist of a privately-operated park with a swimming pool and several athletic fields. Nearby Lake Secession provides areas for fishing, boating, swimming, and picnicking. Hartwell Reservoir and Clarks Hill Reservoir, both within 25 miles of Iva, offer areas for picnicking, camping, fishing, boating, swimming, and other forms of water sports. Several 18-hole and nine-hole golf courses are within a 25-mile

radius of the community. The Sumter National Forest provides public hunting areas. Iva is within an hour's drive of resorts in the Blue Ridge Mountains.

## POWER

Electric power is available to the community and surrounding areas from Duke Power Company. Duke Power, the nation's eighth-largest investor-owned operating electric utility, provides installation of service to industrial customers at no cost to the customer in most cases.

Duke Power Company representatives are available to assist industrial prospects at no cost or obligation in analyzing their electricity needs.

## FUELS

Natural gas is supplied by the Piedmont Natural Gas Company.

## WATER

Iva obtains its water supply from the Starr-Iva Water Authority. The Starr-Iva Water Authority has a storage tank with a capacity of 250,000 gallons per day and an average daily demand of 133,000 gallons. In addition, the Town of Iva has a storage tank with a capacity of 100,000 gallons per day. Iva also has an emergency back-up well that is not presently being used. The well can pump 100 gallons per minute.

Analysis of water supplied in the community:

Total solids	200 mg/L
Alkalinity	11 mg/L
Calcium	2 mg/L
Hardness	8 mg/L
Iron	.1 mg/L
pH	7.1

## SEWER

Iva uses two oxidation lagoons to dispose of the community's wastewater. One lagoon has a maximum capacity for 245,000 gpd and a present load of 75,000 gpd. The second lagoon has a capacity of 378,000 gpd and a present load of 78,000. Plans are to further expand the sewer system in 1985.

## LABOR

Because labor information may change in this area, a current labor availability report prepared and kept up to date by the S.C. State Development Board will be furnished to prospective manufacturers at their request. The comprehensive report will include sources of recruitable labor, labor force characteristics, work force skill levels, earnings data and other pertinent information. The S.C. State Board for Technical and Comprehensive Education has the resources to recruit and train workers in accordance with a company's entry criteria. This training is at little or no cost to the employer. A lead time schedule is developed to coordinate recruiting, testing, selecting, and training. This assures that persons will be able to move from training to their respective jobs at the time the plant is ready for initial production.

## TRANSPORTATION

Iva is served by one interstate highway (I-85, 25 miles), and three South Carolina highways. Iva is served by one railroad, the Carolina and Northwestern. The community is served by 34 authorized motor carriers, five of which have terminal facilities in Anderson (17 miles).

### Freight Delivery Times:

To:	By Rail:	By Truck
Atlanta	2 days	1 day
Baltimore	3 days	3 days
Chicago	4 days	3 days
Houston	6 days	3 days
New York	4 days	4 days
St. Louis	4 days	4 days
San Francisco	6 days	5 days

The Anderson County Airport, 17 miles away, offers commuter airline service on Bankair. The Greenville-Spartanburg Jetport, 47 miles away, offers regularly scheduled commercial airline service on Piedmont, Bankair, Eastern, Sunbird, U.S. Air and Delta. Private aircraft utilize the Anderson County Airport, which has a paved and lighted 5,000-foot runway and a paved 5,000-foot runway. Services available at the Anderson County Airport include RBN; major airframe and major powerplant repairs; 100LL, Jet A and A1 fuel; Unicom and Vortac.

## FOREIGN TRADE ZONE

A Foreign Trade Zone is located in Summerville, South

Carolina, 25 miles from the Port of Charleston and 182 miles from the community. The Foreign Trade Zone allows manufacturers to store, manufacture, or process goods without paying U.S. Customs duties or worrying about quota compliance. This Foreign Trade Zone is served by a multimode transportation network which provides excellent accessibility to market areas.

## TAXES

The assessment on industrial property in South Carolina is 10.5% of the market value. New industry is granted a five-year moratorium on general county taxes (with the exception of school taxes). The city tax rate is \$6.20 per \$100 of assessed value. The county rate is \$9.76 per \$100 of assessed value. The effective city tax rate (tax liability per \$100 of market value) is \$.65. The effective county rate is \$1.02. The state has no tax on a manufacturer's inventories, goods-in-process, raw materials or finished goods. Treatment facilities or equipment of manufacturing plants which control water or air pollution are exempt from all property taxation.

## INDUSTRIAL SITES

Industrial sites are available in Iva with a wide range of geographic and topographic features. In all probability, a site that will meet most industries' requirements has been identified, catalogued, and entered into the State Development Board's Computerized Site Selection System. Detailed site information is available and will be furnished upon request.

## MAJOR EMPLOYERS

Name	Product or Service	Employees
Cutters, Inc.	Sample making	44
Iva Mfg. Co.	Blouses, dresses	101
Jackson Mills	Fancy cotton cloth	425

SOUTH CAROLINA STATE LIBRARY



0 01 01 0033932 3