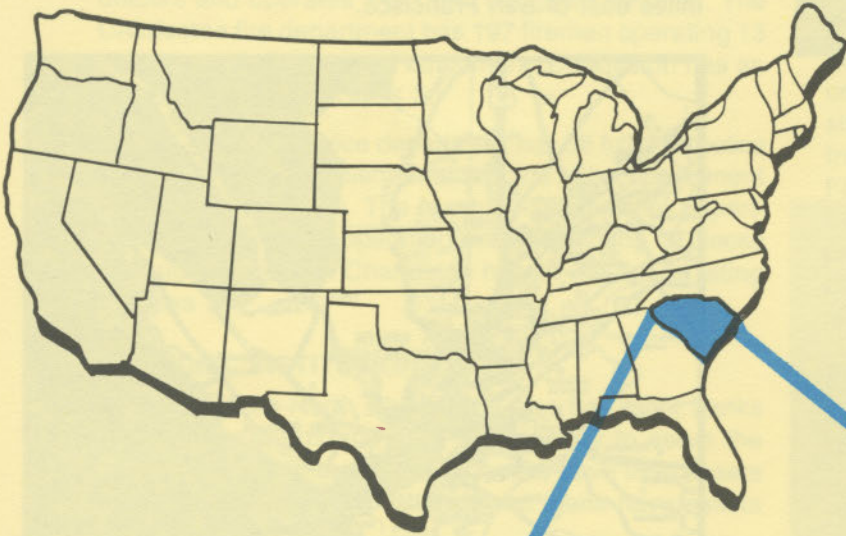


D4925
2.C41
1984
Copy 1

CHARLESTON- NORTH CHARLESTON

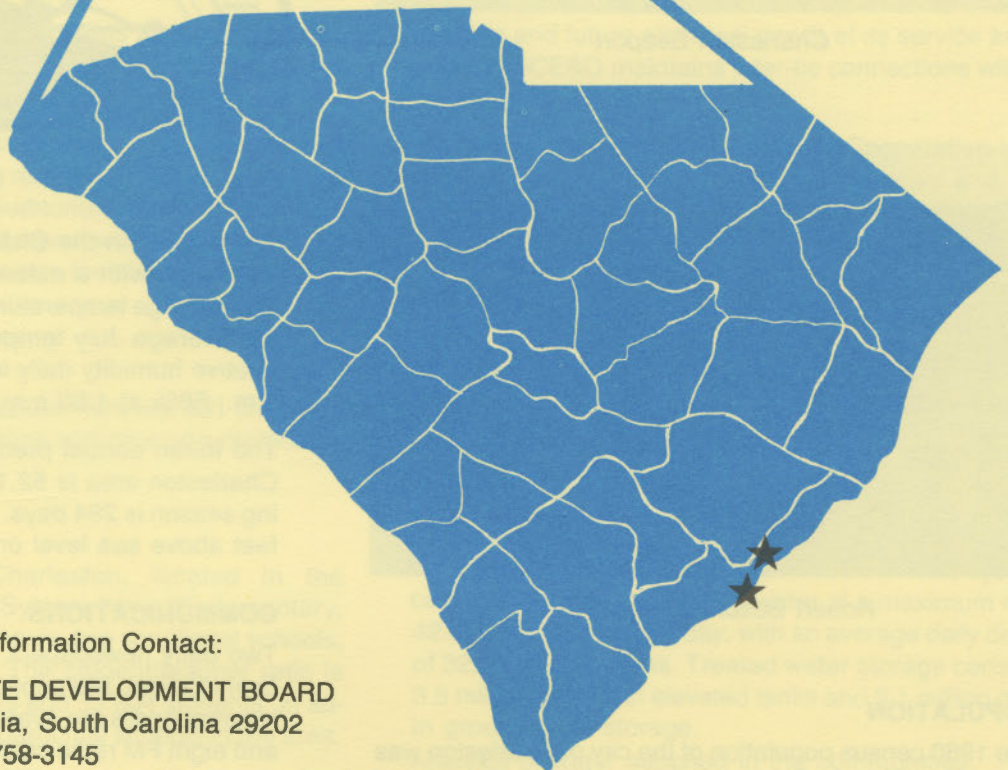
south carolina



S. C. STATE LIBRARY

DEC 2 1 1984

STATE DOCUMENTS

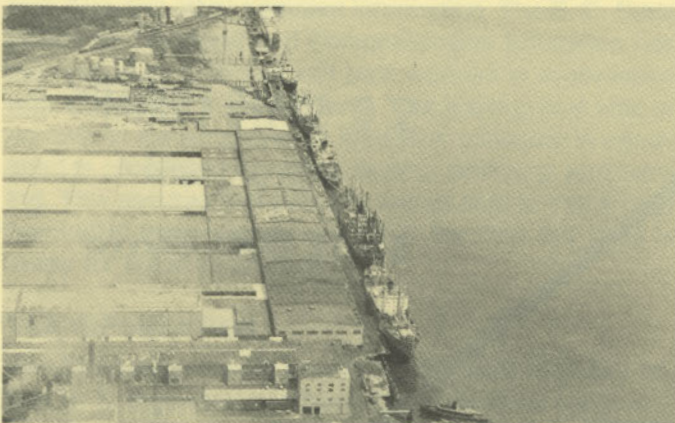


For Additional Information Contact:

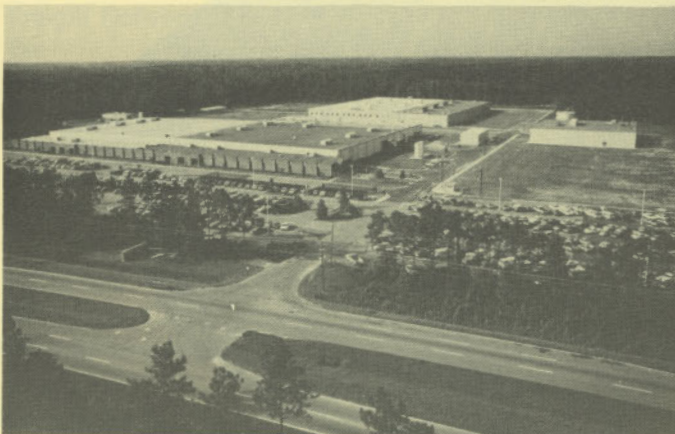
SOUTH CAROLINA STATE DEVELOPMENT BOARD
P. O. Box 927, Columbia, South Carolina 29202
(803) 758-3145



Aerial View of Charleston



Charleston Seaport



Robert Bosch Corporation

POPULATION

The 1980 census population of the city of Charleston was 69,510 and North Charleston was 62,534. The city of Charleston had a 3.8% increase from the 1970 census; the city of North Charleston was unincorporated in 1970 and had a census division population of 19,584. These are the largest cities in the Charleston MSA. The metropolitan area, which is composed of Charleston,

Berkeley and Dorchester Counties, was the second largest in South Carolina according to the 1980 census with a population of 429,705 — a 27.8% increase over the 1970 census population.

LOCATION

As depicted on the cover, the towns of Charleston and North Charleston are located on the Atlantic Coast in the southeastern section of the state. South Carolina's largest port is located in Charleston. These towns are 299 miles east of Atlanta; 766 miles south of New York; and 2,848 miles east of San Francisco.



CLIMATE

The climate in the Charleston-North Charleston area is temperate with a mean annual temperature of 64.7° F. The average temperature during January is 48.6° F, while the average July temperature is 80.2° F. The average relative humidity daily is 86% at 1:00 a.m.; 86% at 7:00 a.m.; 56% at 1:00 p.m.; 74% at 7:00 p.m.

The mean annual precipitation in the Charleston-North Charleston area is 52.12 inches and the average growing season is 294 days. The elevation of Charleston is 20 feet above sea level on the peninsula.

COMMUNICATIONS

Two daily newspapers, *The News and Courier* and *The Evening Post*, are published in Charleston and five weekly newspapers are available in the area. There are ten AM and eight FM radio stations with broadcasting facilities in the Charleston area. TV reception is available from four stations located in the area, representing the three major networks and educational television. There are 24 other stations available through cable television. Telephone service is provided by Southern Bell of Bell South Corporation.

GOVERNMENT

Charleston and North Charleston both have a mayor-council form of municipal government. The twelve council members and the mayor in Charleston and the six council members and the mayor in North Charleston are elected for four-year terms. Charleston County has a council-administrator form of government with nine members elected for four-year terms.

POLICE AND FIRE

The Charleston police department has 212 full-time police officers and operates 140 radio equipped vehicles. The Charleston fire department has 197 firemen operating 13 stations and 17 pieces of equipment. Charleston has an insurance rating of Class 3.

North Charleston police department has 88 full-time police officers and 34 supplemental officers. The department operates 68 vehicles. The North Charleston fire department has 72 firemen operating five stations and 13 pieces of equipment. North Charleston has an insurance rating of Class 3.

FINANCIAL INSTITUTIONS

The Charleston-North Charleston area has eight banks and seven savings and loan associations to serve the financial needs of the area. The banks have total assets of \$9.1 billion while the savings and loans have assets of \$3.4 billion.

HOTELS AND MOTELS

There are over 80 hotels and motels in the Charleston area. Most have swimming pools and dining facilities. Approximately 7,500 rooms are available.

The Gaillard Municipal Auditorium & Exhibiton Hall facilities include six meeting rooms for conference groups of up to 150 persons, an auditorium seating 2,734 persons, and an Exhibition Hall which will accommodate up to 1,500 persons for banquets, functions, or extensive trade exhibits.

CHURCHES

In the central area of Charleston there are 331 churches representing 30 denominations and nine non-denominational groups.

EDUCATION

Charleston and North Charleston, located in the Charleston County School System have 28 elementary, 11 middle and eight high schools, two vocational schools, and three special schools. The student/teacher ratio is 19.7 to 1, with 1,718 teachers and 33,804 students. In addition there are private and parochial schools in the area.

The Citadel, The College of Charleston, the Baptist College at Charleston and the Medical University of South Carolina provide a wide range of educational opportunities for area residents. In addition, Trident Technical College provides the student with technical skills and industry with a valuable source of trained workers.

MEDICAL SERVICES

Medical services for the communities are provided by eight hospitals with 2,772 beds. Five of the eight hospitals are located in Charleston's medical complex, located around the Medical University of South Carolina. The Charleston area is also served by several nursing homes. The communities have 450 physicians and 125 dentists.

RECREATION AND CIVIC FACILITIES

Charleston's location on the beautiful South Carolina coast and its semi-tropical year-round climate offer recreational and cultural activities for all age groups. The community offers a full-time planned recreation program, dramatic theater, museums, opera company, symphony orchestra, 12 golf courses and guided tours of historical sites and landscaped gardens. Four salt-water and three fresh-water beaches are nearby. Francis Marion National Forest provides areas for hunting and camping. SPOLETO FESTIVAL, USA, "the world's most comprehensive arts festival," annually presents music, drama, ballet, films, opera, dance and visual arts to visitors from all over the country.

POWER

Electric power is available to the communities from South Carolina Electric & Gas Company and Berkeley Electric Cooperative. For 1984 SCE&G projects reserve capacity to system coincidental peak of 32%. The company's total generating capacity is 3,959 megawatts. An additional 550 megawatts of coal fired generation is scheduled for 1989. SCE&G plans to have sufficient reserves to meet immediate and future electrical needs of its service area. In addition SCE&G maintains inter-tie connections with four neighboring utilities.

Electric power for Berkeley Electric Cooperative is supplied by Central Electric Power Cooperative and South Carolina Public Service Authority. The generation capacity of plants in operation or under construction totals over 3,000 megawatts with approximately 73% produced from coal. Inter-tie connections are maintained with neighboring power supplies.

FUELS

Natural gas is supplied by South Carolina Electric & Gas Company.

WATER

The communities obtain their municipal water supply from the Edisto River and Back River Reservoir. The system is capable of supplying treated water at a maximum rate of 42.0 million gallons per day, with an average daily demand of 32.0 million gallons. Treated water storage consists of 3.5 million gallons in elevated tanks and 9.1 million gallons in ground level storage.

Analysis of water supplied in the communities:

Total solids	76 mg/L
Alkalinity	23 mg/L
Calcium	9 mg/L
Hardness	26 mg/L
Iron	0.1 mg/L
pH	7.4

SEWER

Charleston's main facility has a capacity of 18.0 million gallons per day and currently averages 10.7 million gallons per day.

North Charleston uses an activated sludge sewage system, which has a design capacity of 18.0 million gallons per day and an average daily flow of 14.0 million gallons.

LABOR

Because labor information may change in this area, a current labor availability report prepared and kept up to date by the S. C. State Development Board will be furnished to prospective manufacturers at their request. The comprehensive report will include sources of recruitable labor, labor force characteristics, work force skill levels, earnings data and other pertinent information. The S. C. State Board for Technical and Comprehensive Education has the resources to recruit and train workers in accordance with a company's entry criteria. This training is at little or no cost to the employer. A lead-time schedule is developed to coordinate recruiting, testing, selecting, and training. This assures that persons will be able to move from training to their respective jobs at the time the plant is ready for initial production.

TRANSPORTATION

The Charleston area is served by Interstate Highway 26, four U. S. highways and three South Carolina highways. The Charleston area is also served by two major railroads: Seaboard System Railroad and Norfolk Southern Railroad Corporation. There are 61 authorized motor carriers in the area; 39 have terminal facilities in the Charleston area.

Freight Delivery Times:

To:	By Rail:	By Truck:
Atlanta	2 days	1 day
Baltimore	3 days	3 days
Chicago	4 days	3 days
Houston	6 days	3 days
New York	4 days	4 days
St. Louis	4 days	4 days
San Francisco	6 days	5 days

The Port of Charleston, with modern dock facilities, offers a 35-foot deep water channel to oceangoing vessels

MAJOR EMPLOYERS

Name
Cummins Engine Co., Inc.
Mobay Chemical Corp.
R-M Industrial Products Co., Inc.
Robert Bosch Corp.
Westvaco Corp.

and connections with all major world ports. It is the largest container port in the South Atlantic and Gulf ranges.

The Charleston International Airport offers regularly scheduled commercial airline service on Delta, Eastern, Bankair, Piedmont and United. Private aircraft utilize the Charleston Executive Airport, seven miles away, which has two paved and lighted 5,000-foot runways. Services available at the airport include flight instruction; charter; major airframe and major powerplant repairs; RBn; 80, 100 and Jet A1 fuel; Vortac and Unicom.

FOREIGN TRADE ZONE

A Foreign Trade Zone is located in Summerville, South Carolina, 25 miles from the Port of Charleston. The Foreign Trade Zone allows manufacturers to store, manufacture, or process goods without paying U. S. Customs duties or worrying about quota compliance. This Foreign Trade Zone is served by a multimode transportation network which provides excellent accessibility to market areas.

TAXES

The assessment on industrial property in South Carolina is 10.5% of the market value. New industry in South Carolina is granted a five-year moratorium on general county taxes (with the exception of school taxes). The Charleston city tax rate is \$10.40 per \$100 of assessed value; the North Charleston city tax rate is \$4.80 per \$100 of assessed value. The county rate is \$13.07 per \$100 of assessed value. The effective city tax rate (tax liability per \$100 of market value) is \$1.09 in Charleston and \$.50 in North Charleston. The effective county rate is \$1.37. The state has no tax on a manufacturer's inventories, goods-in-process, raw materials or finished goods. Treatment facilities or equipment of manufacturing plants which control water or air pollution are exempt from all property taxation.

INDUSTRIAL SITES

Industrial sites are available in the Charleston area with a wide range of geographic and topographic features. In all probability, a site that will meet the needs of most industries' requirements has been identified, catalogued, and entered into the State Development Board's Computerized Site Selection System. Detailed site information is available and will be furnished upon request.

Product or Service	Employees
Diesel engines	777
Dyes, rubber chemicals	477
Heat resistant products	800
Diesel & gasoline injection equipment	780
Kraft linerboard	1,300

