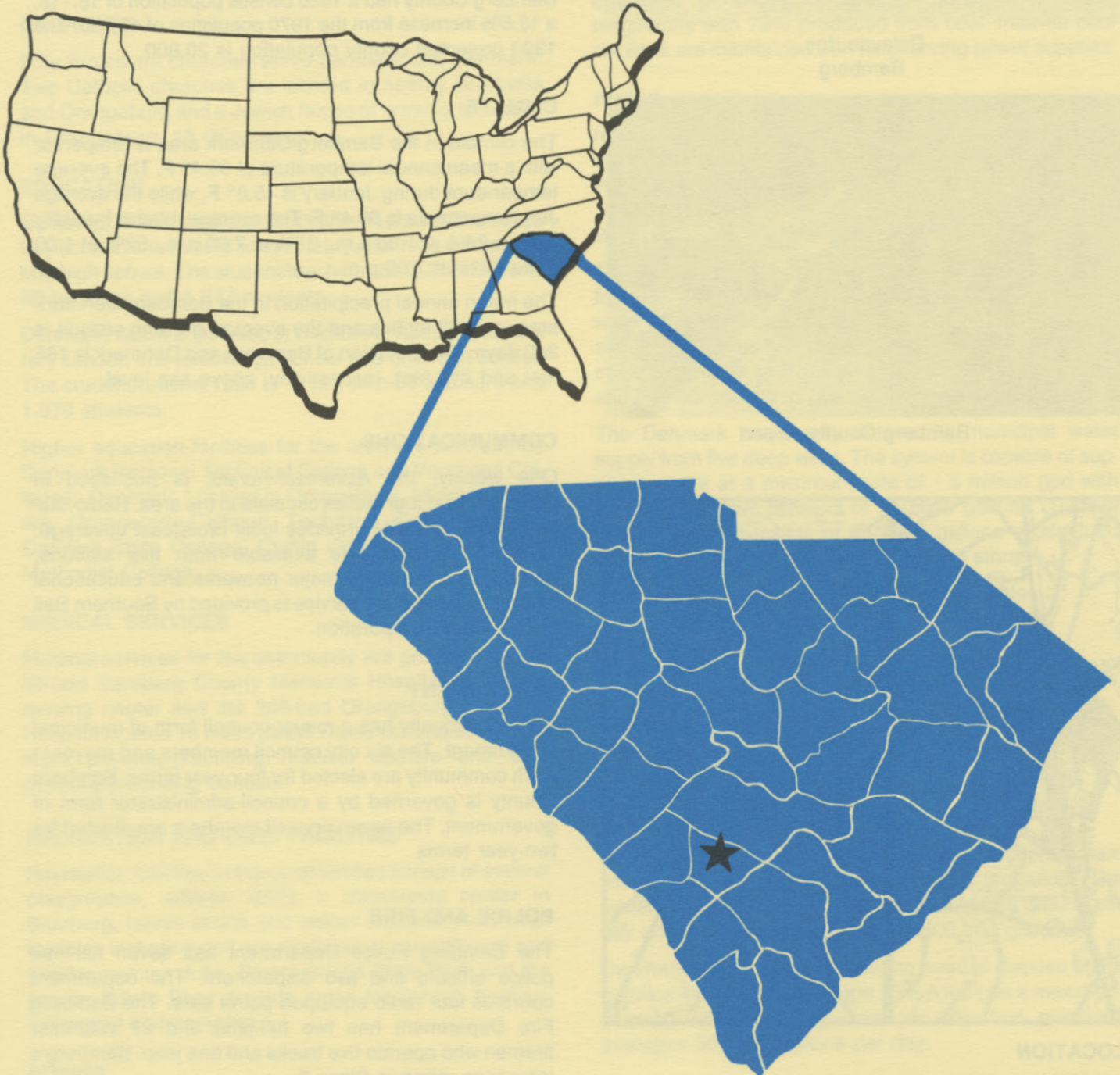


BAMBERG

DENMARK

D4925  
2.B15  
1984

# south carolina

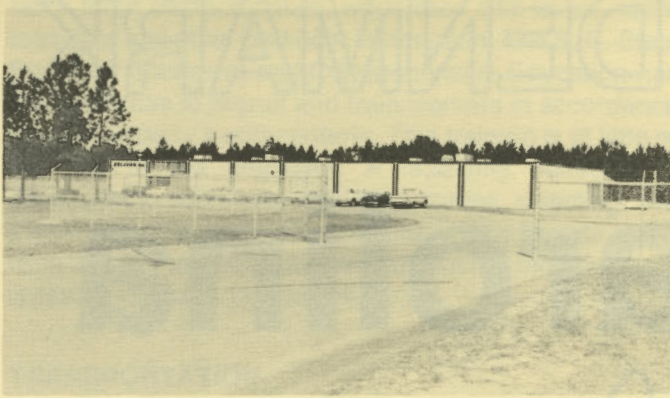


**GREAT TOWNS**

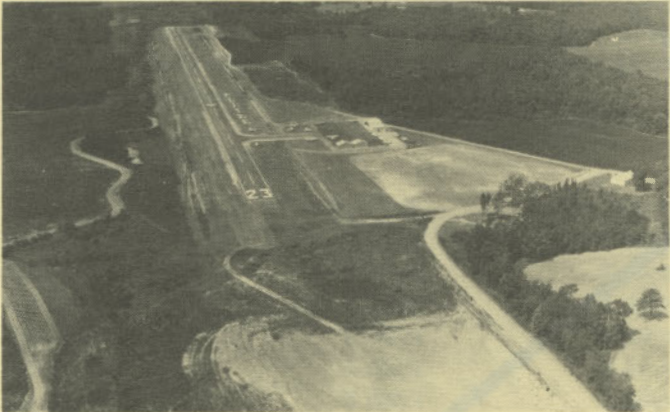
S. C. STATE LIBRARY

JUN 7 1984

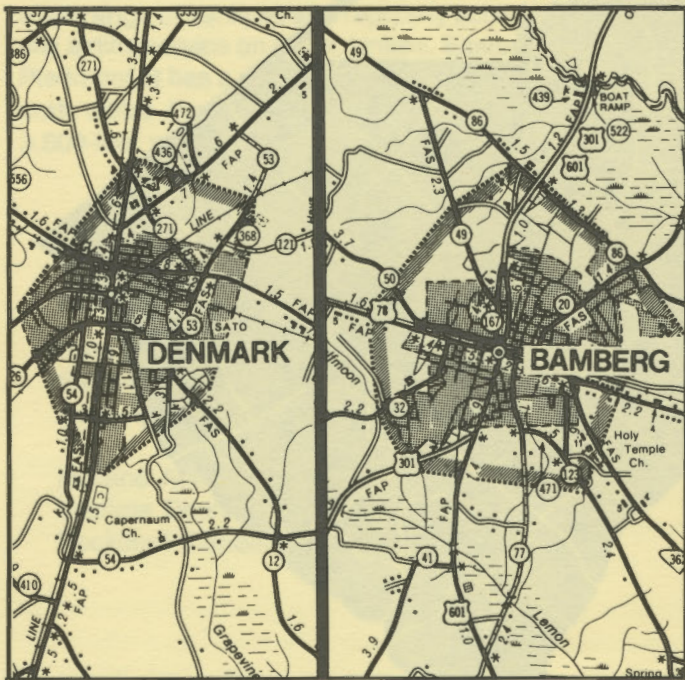
STATE DOCUMENTS



Delavan, Inc.  
Bamberg



Bamberg County Airport



## LOCATION

As depicted on the cover, the towns of Bamberg and Denmark are in the south central section of the state in Bamberg County. Charleston, South Carolina's busiest port, is 86 miles east. Columbia is 56 miles north and Greenville is 156 miles north. These towns are 227 miles east of Atlanta; 750 miles south of New York; and 2,750 miles east of San Francisco.

## POPULATION

The 1980 census population of the city of Bamberg was 3,672 and 4,434 in Denmark. The population of Bamberg increased 7.8% over the 1970 census of 3,406 while the population of Denmark increased 24.2% over the 1970 census of 3,571. The population within a 15-mile radius of Bamberg is 48,881 and within a 15-mile radius of Denmark is 43,662. The population within a 30-mile radius of Bamberg is 160,908 and within a 30-mile radius of Denmark is 142,250.

Bamberg County had a 1980 census population of 18,118, a 13.6% increase from the 1970 population of 15,950. The 1990 projected county population is 20,800.

## CLIMATE

The climate in the Bamberg-Denmark area is temperate with a mean annual temperature of 63.4° F. The average temperature during January is 45.8° F, while the average July temperature is 80.4° F. The average relative humidity daily is 84% at 1:00 a.m.; 87% at 7:00 a.m.; 52% at 1:00 p.m.; 66% at 7:00 p.m.

The mean annual precipitation in the Bamberg-Denmark area is 42.63 inches and the average growing season is 242 days. The elevation of Bamberg and Denmark is 165 feet and 212 feet, respectively, above sea level.

## COMMUNICATIONS

One weekly, the *Advertiser-Herald*, is published in Bamberg, and four dailies circulate in the area. Radio Station WWBD-AM/FM provides local broadcast coverage. Television reception is available from five stations, representing the three major networks and educational television. Telephone service is provided by Southern Bell of Bell South Corporation.

## GOVERNMENT

Each community has a mayor-council form of municipal government. The six city council members and mayor in each community are elected for four-year terms. Bamberg County is governed by a council-administrator form of government. The seven council members are elected for two-year terms.

## POLICE AND FIRE

The Bamberg Police Department has seven full-time police officers and two dispatchers. The department operates four radio equipped patrol cars. The Bamberg Fire Department has two full-time and 27 volunteer firemen who operate five trucks and one jeep. Bamberg's insurance rating is Class 6.

The Denmark Police Department has six full-time and one part-time police officers. The department operates four radio equipped patrol cars. The Denmark Fire Department has two full-time and 25 volunteer firemen who operate three pumper trucks, one tanker, and one ladder truck. Denmark's insurance rating is Class 7.

## FINANCIAL INSTITUTIONS

Two major Columbia headquartered banks with total assets of \$3.4 billion have branches in each community. Two savings and loans with assets of \$75 million serve the financial needs of the area.

## HOTELS & MOTELS

Seven motels with a total of 150 overnight accommodations serve the communities. Banquet and meeting facilities are available in Bamberg.

## CHURCHES

Fifty Protestant churches serve Bamberg and Denmark. Two Catholic churches are located in nearby Blackville and Orangeburg and a Jewish house of worship is located in Orangeburg, 18 miles away.

## EDUCATION

Bamberg, which is included in District #1, has one elementary school, one middle school, one junior high school and one high school. The student/teacher ratio is 21.8 to 1 with 86 teachers and 1,877 students.

Denmark, which is included in District #2, has one elementary school, one junior high school and one high school. The student/teacher ratio is 17 to 1 with 98 teachers and 1,670 students.

Higher education facilities for the area are provided by Denmark Regional Technical College and Voorhees College in Denmark. Located in Orangeburg, 18 miles away, are Orangeburg-Calhoun Technical College, South Carolina State College, Claflin College, and Southern Methodist College.

## MEDICAL SERVICES

Medical services for the community are provided by the 59-bed Bamberg County Memorial Hospital, a 22-bed nursing center and the 286-bed Orangeburg Regional Hospital located 18 miles away. These communities have eight privately-practicing medical doctors and four privately-practicing dentists.

## RECREATION AND CIVIC FACILITIES

Recreation facilities in the communities consist of several playgrounds, athletic fields, a community center in Bamberg, tennis courts and indoor theaters. Additional facilities including golf are available at several local and nearby country clubs. Rivers Bridge State Park and the nearby Edisto River provide areas for fishing, boating, swimming and camping.

## POWER

Electric power is available to the communities and surrounding areas from South Carolina Electric & Gas Company and Edisto Electric Cooperative. For 1984 SCE&G projects reserve capacity to system coincidental peak of 32%. The company's total generating capacity is 3,959 megawatts. An additional 500 megawatts of coal

fired generation is scheduled for 1989. SCE&G plans to have sufficient reserves to meet immediate and future electrical needs of its service area. In addition, SCE&G maintains inter-tie connections with four neighboring utilities.

Electricity is supplied for the town of Bamberg by the Bamberg Board of Public Works.

Electric power for Edisto Electric Cooperative is supplied by Central Electric Cooperative and South Carolina Public Service Authority. The generation capacity of plants in operation or under construction totals over 3,000 megawatts with 73% produced from coal. Inter-tie connections are maintained with neighboring power supplies.

## FUELS

Natural gas is supplied to Denmark by South Carolina Electric & Gas Company. The Bamberg Board of Public Works serves the community of Bamberg.

## WATER

The Bamberg community obtain its municipal water supply from five deep wells. The system is capable of supplying water at a maximum rate of 1.0 million gpd, with an average daily demand of 490,000 gallons. Treated water storage consists of 875,000 gallons in elevated storage and 75,000 gallons in ground storage.

The Denmark community obtains its municipal water supply from five deep wells. The system is capable of supplying water at a maximum rate of 1.5 million gpd with an average daily demand of 450,000 gallons. Treated water storage consists of 450,000 gallons in elevated storage and 125,000 gallons in ground storage.

Analysis of water supplied in the communities:

	Bamberg	Denmark
Total solids	NA	135 mg/L
Alkalinity	39 mg/L	109 mg/L
Calcium	8 mg/L	30 mg/L
Hardness	22 mg/L	82 mg/L
Iron	.4 mg/L	.1 mg/L
pH	7.1	7.8

## SEWER

Bamberg uses a waste treatment and collection system which disposes of the waste by spray irrigation. The system has a maximum capacity of 1.5 million gallons per day and an average daily flow of 800,000 gallons.

Denmark uses a 17-acre oxidation pond to dispose of the community's sanitary sewage. The pond has a maximum capacity of 500,000 gallons per day and presently averages 300,000 gallons per day.

## LABOR

Because labor information may change in this area, a current labor availability report prepared and kept up to date by the S. C. State Development Board will be furnished to prospective manufacturers at their request. The comprehensive report will include sources of recruitable labor,

labor force characteristics, work force skill levels, earnings data and other pertinent information. The S. C. State Board for Technical and Comprehensive Education has the resources to recruit and train workers in accordance with a company's entry criteria. This training is at little or no cost to the employer. A lead-time schedule is developed to coordinate recruiting, testing, selecting, and training. This assures that persons will be able to move from training to their respective jobs at the time the plant is ready for initial production.

**TRANSPORTATION**

These communities are served by two interstate highways, I-26 and I-95, three United States highways and two South Carolina highways. Two railroads, the Seaboard System and the Southern Railway System serve both communities. Thirty-four authorized motor carriers serve Bamberg and Denmark.

**Freight Delivery Times:**

To:	By Rail:	By Truck:
Atlanta	3 days	1 day
Boston	6 days	4 days
Chicago	6 days	3 days
Houston	9 days	3 days
New York	4 days	3 days
St. Louis	6 days	2 days
San Francisco	12 days	5 days

The Columbia Metropolitan Airport, 50 miles away, offers a full range of services and regularly scheduled commercial airline service on Delta, United, Eastern, Bankair and Piedmont. It has a modern air freight terminal. Private aircraft utilize the Bamberg County Airport, which has a 3,600-foot paved runway.

**FOREIGN TRADE ZONE**

A Foreign Trade Zone is located in Summerville, South Carolina, 25 miles from the Port of Charleston and 61 miles from the communities. The Foreign Trade Zone allows manufacturers to store, manufacture or process goods without paying U. S. Customs duties or worrying about quota compliance. This Foreign Trade Zone is served by a multi-mode transportation network which provides excellent accessibility to market areas.

**TAXES**

The assessment on industrial property in South Carolina is 10.5% of the market value. New industry is granted a five-year moratorium on general county taxes (with the exception of school taxes.) The Bamberg city tax rate per \$100 of assessed value is \$5.10 and the county rate is \$10.35. The effective city tax rate (tax liability per \$100 of market value) is \$.54 and the effective county rate is \$1.09. The Denmark city tax rate per \$100 of assessed value is \$7.80 and the county rate is \$11.85. The effective city tax rate is \$.82 and the effective county rate is \$1.24. The state has no tax on a manufacturer's inventories, goods-in-process, raw materials or finished goods. Treatment facilities or equipment of manufacturing plants which control water or air pollution are exempt from all property taxation.

**INDUSTRIAL SITES**

Industrial sites are available in Bamberg and Denmark with a wide range of geographic and topographic features. In all probability, a site that will meet the needs of most industries' requirements has been identified, catalogued, and entered into the State Development Board's Computerized Site Selection System. Detailed site information is available and will be furnished upon request.

**MAJOR EMPLOYERS**

Name	Product or Service	Employees
Bamberg Textile Mills, Inc.	Cotton gauze	278
Delavan, Inc.	Oil burner nozzles	127
	Jet aircraft nozzles	
Holland Atlantic Hitch Co.	Trailer hitches and fifth wheels	80
Lifetime Doors	Flush and folding doors	89
Rockland-Bamberg Industries, Inc.	Coatings, bleaching and printing fabrics	124

For Additional Information Contact:

SOUTH CAROLINA STATE DEVELOPMENT BOARD  
P.O. Box 927, Columbia, South Carolina 29202  
(803) 758-3145

