

SCSL Digital Collections

Commuting Patterns: Richland County

Item Type	Text
Rights	Copyright status determined to be in the public domain on April 27, 2020 by United States Supreme Court ruling (Georgia et al., Petitioners v. Public.Resource.Org, Inc. : 590 U.S. __ (2020))
Download date	2024-08-12 10:55:29
Link to Item	https://dc.statelibrary.sc.gov/handle/10827/40093

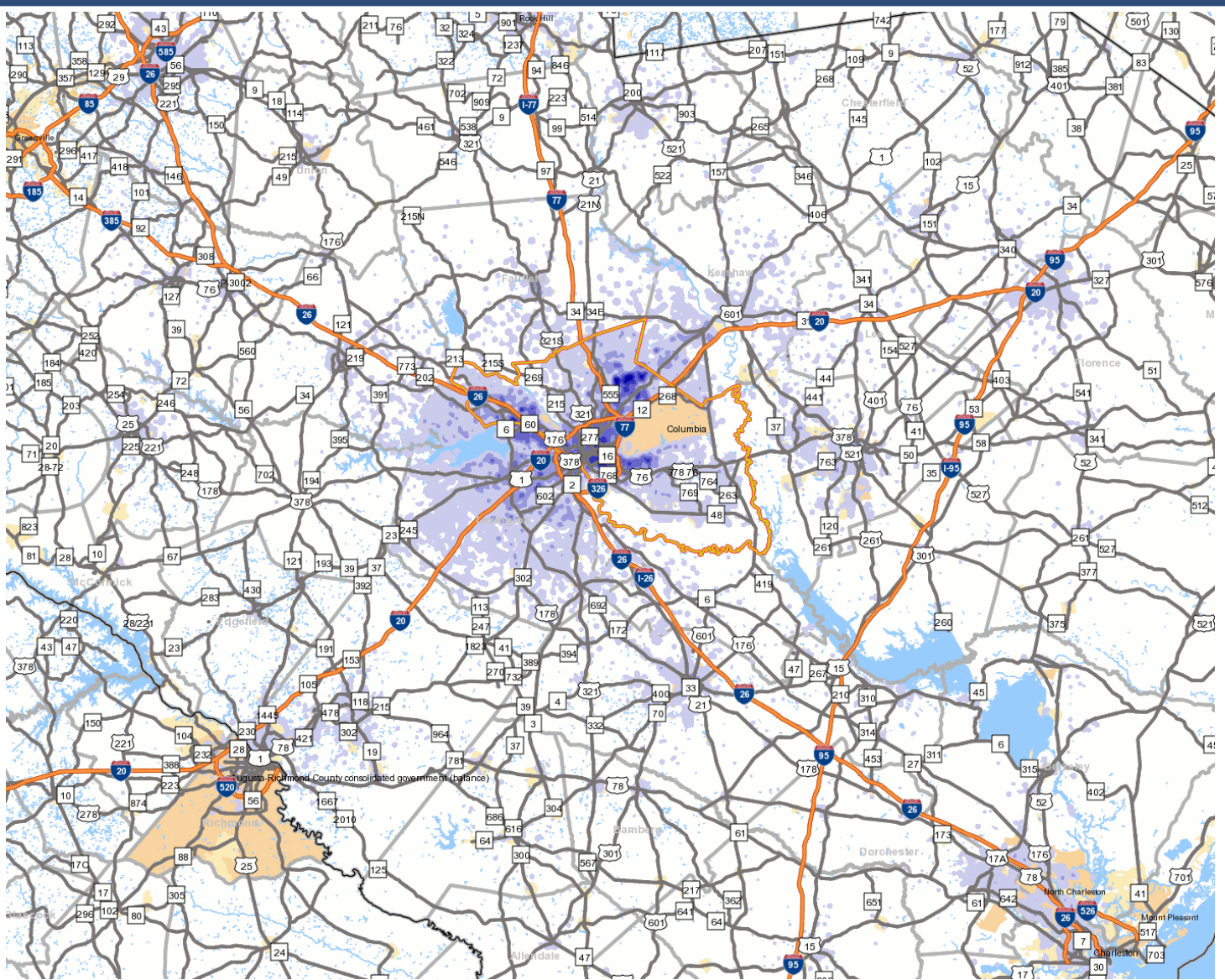
Richland County

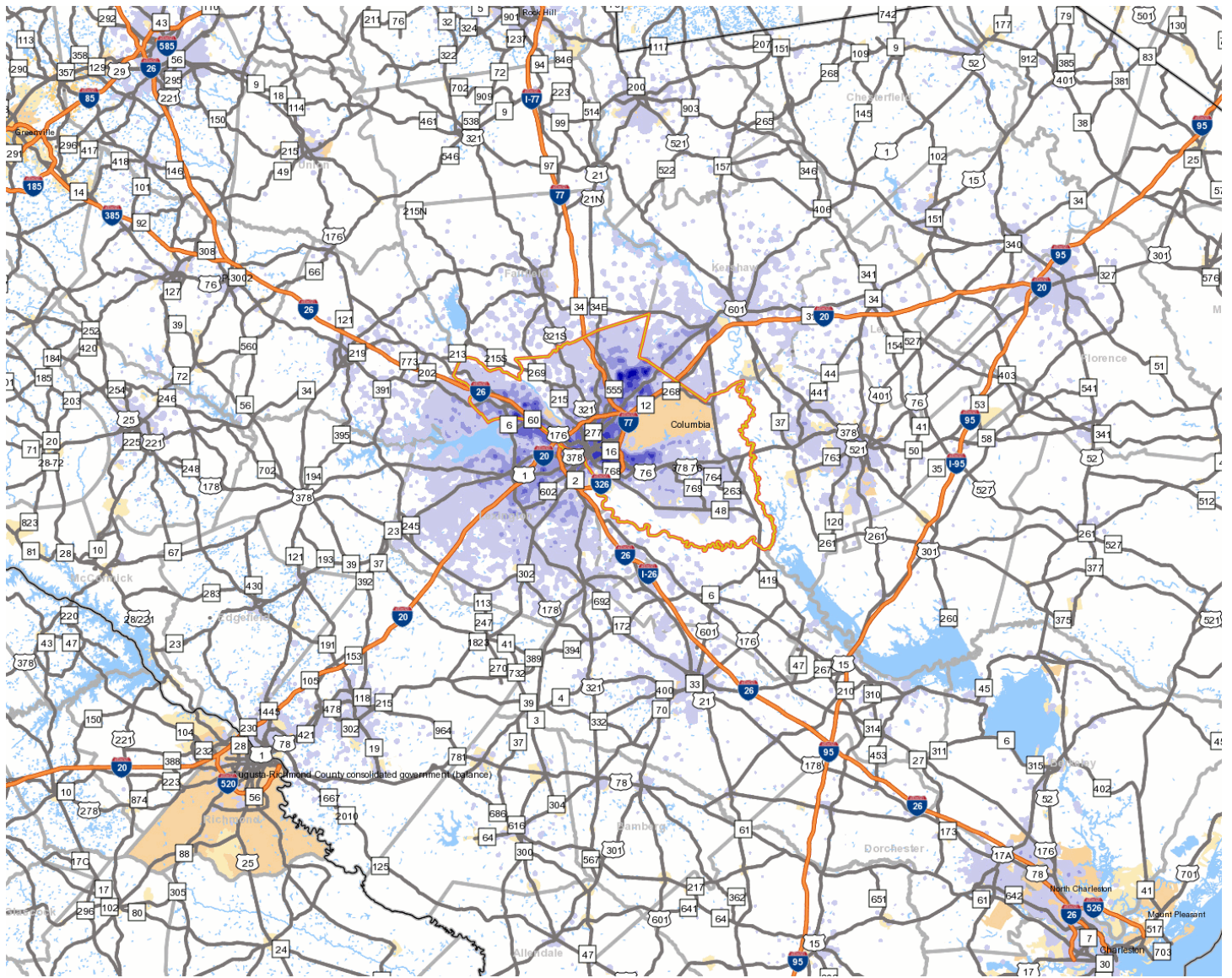
County Seat: Columbia

Website: www.richlandonline.com

Where Workers Who Live in Richland County Work

% of Workers	Work in County	State
63.30%	Richland County	South Carolina
14.40%	Lexington County	South Carolina
3.00%	Greenville County	South Carolina
2.50%	Charleston County	South Carolina
1.60%	Spartanburg County	South Carolina
1.20%	Horry County	South Carolina
1.10%	Sumter County	South Carolina
1.00%	Orangeburg County	South Carolina
1.00%	Kershaw County	South Carolina
0.90%	York County	South Carolina
10.00%	All Other Counties	South Carolina





Where Workers Who Work in Richland County Live

% of Workers	Work In County	State
43.30%	Richland County	South Carolina
20.10%	Lexington County	South Carolina
3.70%	Kershaw County	South Carolina
2.40%	Greenville County	South Carolina
2.20%	Charleston County	South Carolina
1.90%	Sumter County	South Carolina
1.70%	Orangeburg County	South Carolina
1.70%	Horry County	South Carolina
1.70%	Spartanburg County	South Carolina
1.40%	Fairfield County	South Carolina
19.90%	All Other Counties	South Carolina

Source: U.S. Census Bureau (Local Employment Dynamics)