

# SCSL Digital Collections

## Business enterprise program

Item Type	Text
Publisher	South Carolina State Library
Rights	Copyright status undetermined. For more information contact, South Carolina State Library, 1500 Senate Street, Columbia, South Carolina 29201.
Download date	2024-10-05 19:53:38
Link to Item	<a href="http://hdl.handle.net/10827/7835">http://hdl.handle.net/10827/7835</a>

**SC blind licensed business operators manage long-term successful businesses in state and federal locations such as:**

- Ft Jackson
- Along Interstates I-20, I-26 and I-95
- Several State Correctional Facilities
- Locations with County and City Buildings
- Several Vending Routes in cities throughout SC

### **Your Food Service Solution**

The Business Enterprise Program has been in operation since 1966. BEP currently operates more than 100 food service operations in Federal, state municipal and private businesses. Whether an organization is in need of vending machines, coffee bar service, a deli-style operation, a snack bar or a full service cafeteria, The Business Enterprise Program is committed to providing quality food service.

The facilities are managed by Blind Licensed Vendors and are directed by experienced South Carolina Commission for the Blind Business Consultants, managing vending needs of organizations both large and small. The South Carolina Commission for the Blind administers the program and provides on-going administrative and technical support to the Blind Licensed Vendors for the duration of their business careers. Initial stock, equipment and installation, maintenance and management services are provided at no cost to you!

A solid commitment to providing your organization with personalized service and good quality food at competitive prices is the goal of the Business Enterprise Program!

## **Our Mission**

The mission of the South Carolina Commission for the Blind is to provide quality, individualized vocational rehabilitation services, independent living services, and prevention of blindness services to blind and visually impaired consumers leading to competitive employment and social and economic independence.

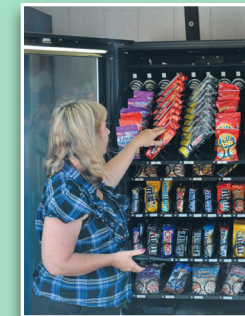
## **District Offices**

Aiken Office .....	803-641-7658
Charleston Office .....	843-852-4225
Columbia Office .....	803-898-8731
Conway Office.....	843-248-2017
Florence Office .....	843-661-4788
Greenville Office .....	864-241-1111
Greenwood Office .....	864-223-3334
Greer Office .....	864-877-2384
Rock Hill Office .....	803-980-8140
Walterboro Office.....	843-539-1156



1430 Confederate Avenue  
Columbia, SC 29201  
1-800-922-2222  
(803) 898-8731  
[www.sccb.state.sc.us](http://www.sccb.state.sc.us)

*In accordance with Title VI of the 1964 Civil Rights Act, Section 504 of the 1973 Rehabilitation Act and the provisions of the 1990 Americans with Disabilities Act, services of the South Carolina Commission for the Blind are provided in a non-discriminatory manner without regard to race, sex, age, color, religion, disability or national origin.*



## **Business Enterprise Program**

***The SC Commission for the Blind puts blind and/or visually impaired individuals where they want to work!*** The Business Enterprise Program (BEP) trains, licenses and places vendors in snack bars, cafeterias, and rest stops throughout the state.

The Business Enterprise Program was established in 1936 under the authorizing legislation of the Randolph-Sheppard Act. This federal regulation provides qualified blind individuals the opportunity to operate businesses on Federal property by granting them priority on such property. Shortly thereafter, all states established a similar law that included state, county and municipal property.

***The Business Enterprise Program works with SCCB Vocational Rehabilitation Counselors and consumers in identifying potential consumers to complete training as Blind Licensed Vendors.***

### ***Eligibility***

In order to qualify, participants must be:

- Legally Blind (have a visual acuity of 20/200 in the better eye or restricted vision field of no more than 20 degrees)
- 18 or older
- Legal resident of U.S. and S.C.

Those who do not meet these qualifications are not eligible for the program.

### ***Do you have what it takes?***

If you are in need of employment, have good mathematical, organizational and public relations skills, are physically able to meet the required day-to-day tasks, and can get to work independently

and safely, then the Business Enterprise Program may be the employment opportunity for you!

### ***Why become a Blind Licensed Vendor?***

- Becoming a Blind Licensed Vendor allows you to become the owner of your very own vending location with assistance and support from the SC Commission for the Blind.
- Blind Licensed Vendors pay no rent or other assessments where vending locations are established.
- Blind Licensed Vendors receive assistance with startup cost.
- The BEP provides employment opportunities and teaches you the skills for maintaining that employment.
- Newly licensed vendors have the chance to eventually become independent business operators.

### ***Job Training***

Training to become a Blind Licensed Vendor consists of 8 weeks of classroom training in courses from state law and policy to customer service and food safety regulations, as well as, 8 weeks of hands on training at various BEP locations. Training is conducted at the SC Commission for the Blind headquarters in Columbia, SC. During training, consumers reside at the Ellen Beach Mack Rehabilitation Center. You may also receive a \$300 stipend for graduating the training course.

### ***Licensure***

Once the training course is completed, you will receive a **Level 1** license and then be eligible to take the ServSafe Exam. Upon passing the ServSafe

exam, you will receive a **Level II** license and a food safety certification. With the Food Safety Certification and 6 more weeks of training for high volume vending, a **Level III** license is issued. Upon successful completion of 8 additional weeks of training in the BEP's cafeteria, a **Level IV** license is issued and the opportunity to bid on **any** of the available vending facilities throughout South Carolina.

### ***Placement***

Upon completing the 8 weeks of training and 8 weeks of On -the-Job training, you may bid for an available vending location.

You will compete with other licensed candidates for a specific vending location.

Selections are based on skills, performance and experience.

Once a bid is submitted for available vending locations, the BEP Vending Committee will conduct an interview and review your business plan. Upon acceptance and approval of a vending location, you will join hundreds of Blind Licensed Vendors around the state and the nation!

### ***Income***

Income potential varies with the location and size of the vending operation.

You will operate the facility as your own business and receive income from the net profits. Income is comparable to the South Carolina average income.