

SCSL Digital Collections

Quick facts, 2009/2010

Item Type	Text
Publisher	South Carolina State Library
Rights	Copyright status undetermined. For more information contact, South Carolina State Library, 1500 Senate Street, Columbia, South Carolina 29201.
Download date	2024-10-08 22:37:05
Link to Item	http://hdl.handle.net/10827/24370



QUICK FACTS

About Our Students during the 2009/2010 Academic Year

Fall Semester 2009

- 59% of students enrolled on a full-time basis; 41% on a part-time basis
- 66% of students were female; 50% were minorities (minorities are considered any ethnicity except Caucasian)

Source: Crystal Student Tracking Report as of 10-12-2009

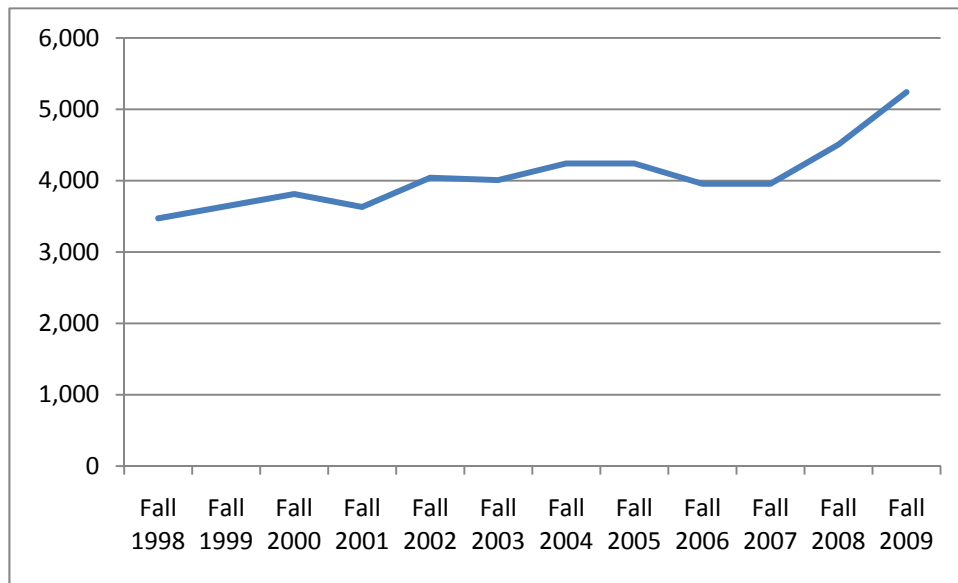
Spring Semester 2010:

- 58% of students enrolled on a full-time basis; 42% on a part-time basis
- 67% of students were female; 52% were minorities (minorities are considered any ethnicity except Caucasian)

Source: Crystal Student Tracking Report as of 2-1-2010

FDTC Historical Information / Trends

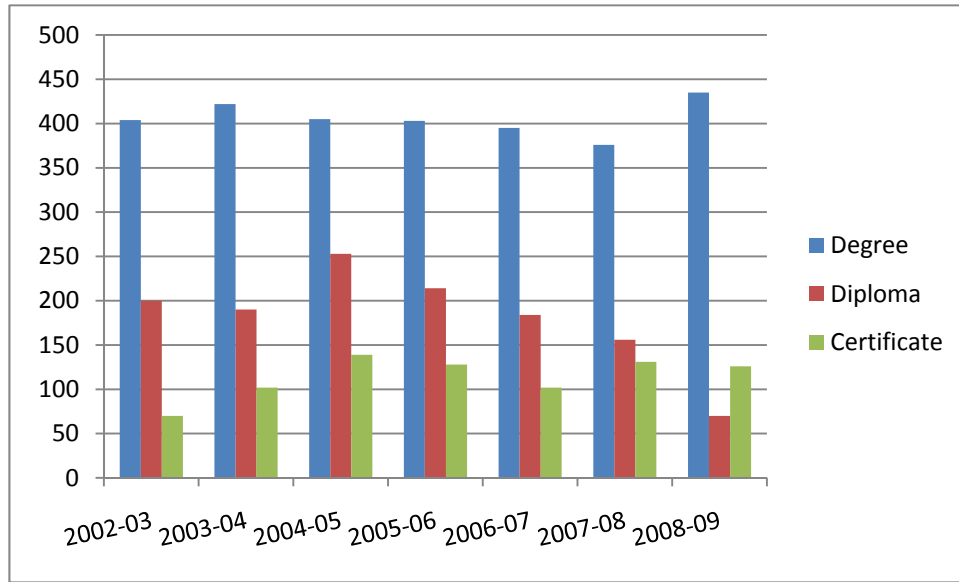
Historical Enrollment											
Fall 1998	Fall 1999	Fall 2000	Fall 2001	Fall 2002	Fall 2003	Fall 2004	Fall 2005	Fall 2006	Fall 2007	Fall 2008	Fall 2009
3,472	3,643	3,814	3,632	4,041	4,009	4,241	4,241	3,957	3,956	4,505	5,242



Source: CHE

Graduates by Award Type

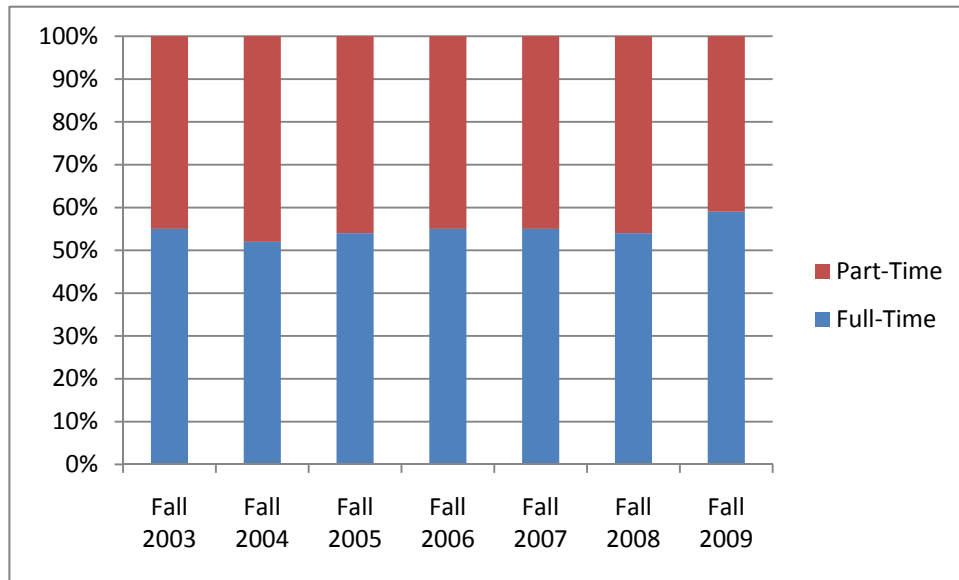
	2002-03	2003-04	2004-05	2005-06	2006-07	2007-08	2008-09
Degree	404	422	405	403	395	376	435
Diploma	200	190	253	214	184	156	70
Certificate	70	102	139	128	102	131	126
Total Graduates	674	714	797	745	681	663	631



Source: CHE

Full-time and Part-Time Student Enrollment: Percentage of Total Enrollment

	Full-Time Students	Part-Time Students
Fall 2003	55%	45%
Fall 2004	52%	48%
Fall 2005	54%	46%
Fall 2006	55%	45%
Fall 2007	55%	45%
Fall 2008	54%	46%
Fall 2009	59%	41%

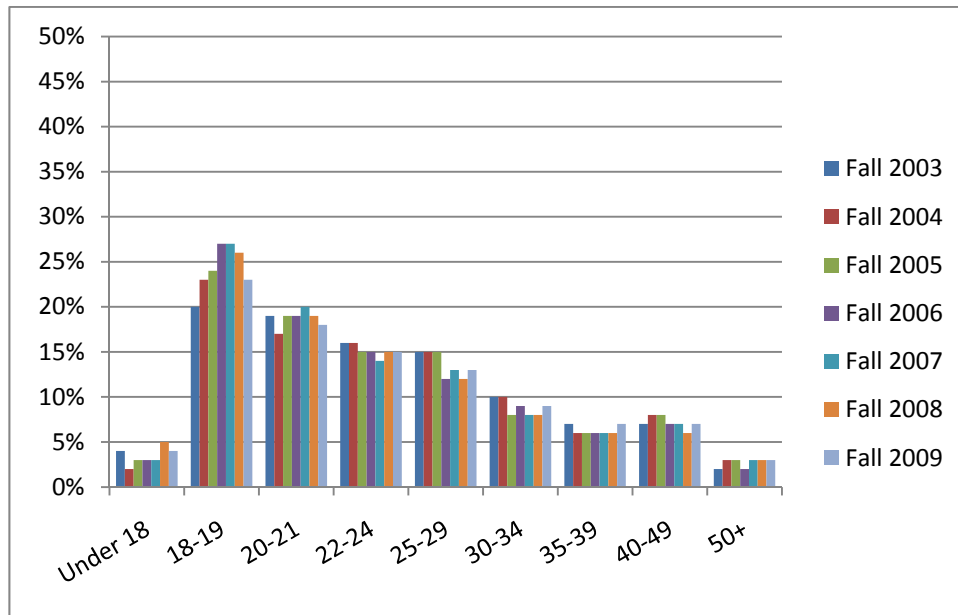


Source: CHE

Student Body Enrollment by Age: Age Group Percentage of Total Enrollment*

	Fall 2003	Fall 2004	Fall 2005	Fall 2006	Fall 2007	Fall 2008	Fall 2009
Under 18	4%	2%	3%	3%	3%	5%	4%
18 – 19	20%	23%	24%	27%	27%	26%	23%
20 – 21	19%	17%	19%	19%	20%	19%	18%
22 – 24	16%	16%	15%	15%	14%	15%	15%
25 – 29	15%	15%	15%	12%	13%	12%	13%
30 – 34	10%	10%	8%	9%	8%	8%	9%
35 – 39	7%	6%	6%	6%	6%	6%	7%
40 – 49	7%	8%	8%	7%	7%	6%	7%
50+	2%	3%	3%	2%	3%	3%	3%

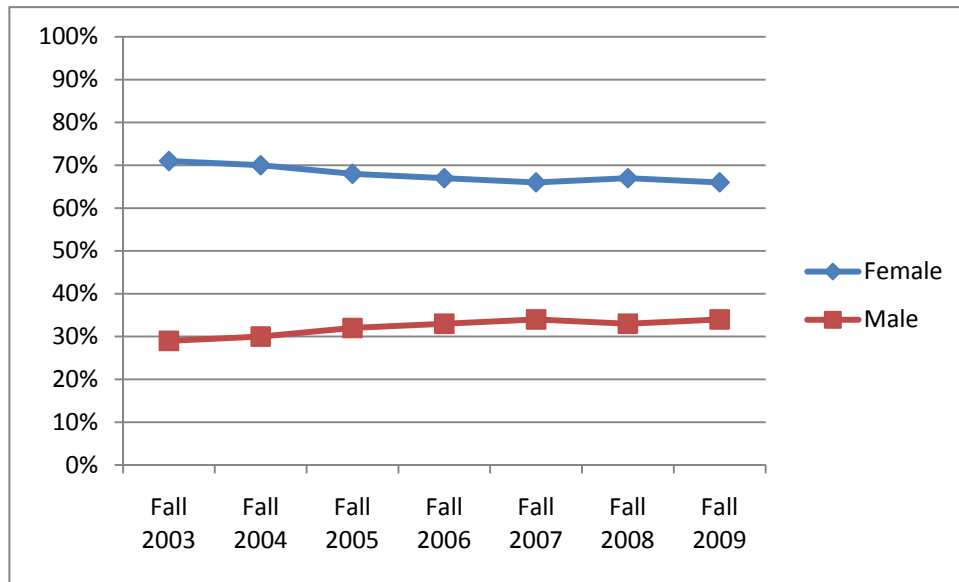
*Totals may not equal 100% due to rounding



Source: CHE

Student Gender: Percent of Total Enrollment

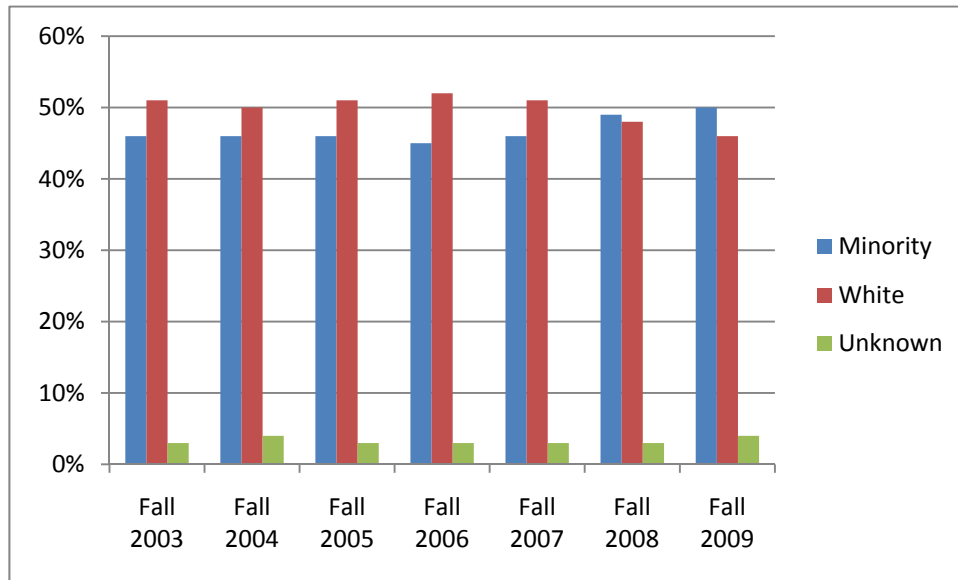
	Fall 2003	Fall 2004	Fall 2005	Fall 2006	Fall 2007	Fall 2008	Fall 2009
Female	71%	70%	68%	67%	66%	67%	66%
Male	29%	30%	32%	33%	34%	33%	34%



Source: CHE

Student Ethnicity: Percent of Total Enrollment

	Fall 2003	Fall 2004	Fall 2005	Fall 2006	Fall 2007	Fall 2008	Fall 2009
Minority	46%	46%	46%	45%	46%	49%	50%
White	51%	50%	51%	52%	51%	48%	46%
Unknown	3%	4%	3%	3%	3%	3%	4%



Source: CHE

Faculty Members by Ethnicity

	2003	2004	2005	2006	2007	2008	2009
Minority	16%	16%	18%	20%	21%	23%	23%
White	84%	84%	82%	80%	79%	77%	77%

Source: FDTC EEO Report

Faculty Members by Gender

	2003	2004	2005	2006	2007	2008	2009
Female	52%	52%	52%	50%	50%	51%	52%
Male	48%	48%	48%	50%	50%	49%	48%

Source: FDTC EEO Report

Student Right-To-Know Information

- Public Law 101-542 as amended by Public Law 102-26, the Higher Education Amendments of 1991 is known as the Student-Right-To-Know and Campus Security Act. This Act requires institutions to produce and make readily available to current students, and to each prospective student enrolling or entering into any financial obligation, the completion or graduation rate of certificate or degree-seeking full-time undergraduate students entering the institution. Each institution will also publish and distribute crime statistics.
- The Florence-Darlington Technical College cohort, instituted by the State Board for Technical and Comprehensive Education in 1991, tracks full-time, first-time students seeking a degree or certificate. The cohort follows a four-year period and reflects a fall-to-fall assessment.
- The completion rates below reflect ONLY members of the cohort who completed a program within 150% of “normal time.” “Normal time” is defined as the amount of time necessary for a student to complete all course requirements for a degree or certificate program. In this instance, 150% of “normal time” equals three years.

<u>Year</u>	<u>Number in Cohort</u>	<u>Cohort Completers within 150% of Normal Time</u>
Fall 2001	549	9%
Fall 2002	587	14%
Fall 2003	601	15%
Fall 2004	699	10%
Fall 2005	723	13%
Fall 2006	733	11%
Fall 2007	789	
Fall 2008	805	

- Total College enrollment and graduates for the same periods are listed below:

<u>Academic Year</u>	<u>Fall Enrollment</u>	<u>Annual Graduates</u>
2001 – 2002	3,632	668
2002 – 2003	4,041	674
2003 – 2004	4,009	714
2004 – 2005	4,241	797
2005 – 2006	4,241	745
2006 – 2007	3,957	681
2007 – 2008	3,956	663
2008 – 2009	4,505	631
2009 – 2010	5,242	