



## Cotton/Soybean Insect Newsletter

Volume 12, Issue #7 Edisto Research & Education Center in Blackville, SC

14 June 2017

### Pest Patrol Alerts

The information contained herein each week is available via text alerts that direct users to online recordings. I will update the short message weekly for at least as long as the newsletter runs. After a new message is posted, a text message is sent to alert users that I have recorded a new update. Users can subscribe for text message alerts for my updates in two easy steps. Step one: register by texting **pestpat7** to 97063. Step two: reply to the confirmation text you receive by texting the letter “y” to complete your registration. Pest Patrol Alerts are sponsored by Syngenta.

### Updates on Twitter

When noteworthy events happen in the field, I will be sending them out quickly via Twitter. If you want to follow those quick updates, follow me at @bugdocisin on Twitter.



### News from Around the State

**Andrew Warner**, county agent in Hampton County, observed some kudzu bugs in soybeans this week (pictured here – female depositing egg mass and adults on plants).



As I mentioned last week, the fungus *Beauveria bassiana* has greatly reduced numbers of kudzu bugs, but they are still here and could be an issue. You have to scout. Andrew also saw a few small caterpillars in the field (probably green cloverworms), and we will spend more time in the coming weeks talking about identifying moths and caterpillars. Also, when out in soybeans now, check for threecornered alfalfa hoppers (TCAH) when you are checking early beans for kudzu bugs and other potential early problems

with insects. As we stated last week, don't just start checking soybeans for insects after bloom. Much happens early, and I think we miss a lot of damage from TCAH early. **Drake Perrow**, producer and consultant near Cameron, SC, reported observing 1 corn earworm (CEW – pictured left in photo) larvae per rowft in peanuts – they might have been mixed with tobacco budworm (TBW – pictured right in photo), so pressure from various species of caterpillars is coming. Because the larvae of CEW and TBW are almost identical with the naked eye, know how to tell the



The Clemson University Cooperative Extension Service offers its programs to people of all ages, regardless of race, color, gender, religion, national origin, disability, political beliefs, sexual orientation, marital or family status and is an equal opportunity employer. Clemson University Cooperating with U.S. Department of Agriculture, South Carolina Counties, Extension Service, Clemson, South Carolina.

*Public Service Activities*

The mention of any commercial product in this publication does not imply its endorsement by Clemson University over other products not named, nor does the omission imply that they are not satisfactory.



moths apart. This is important in soybeans later...not so much for peanuts because I think they were going to use Prevathon, a good choice of insecticide for both species in peanuts. Although the pyrethroids might be losing their effectiveness on CEW, we still might get some control, especially when going after stink bugs later. **Josh Mays**, cotton scout for Rusty Darby up in Chester County, reported that he is finding higher than treatable numbers (6-8 bugs per 20 sweeps) of tarnished plant bugs (TPB) in 7-node cotton with a couple of squares. We will recommend the threshold they use



in the Mid-South of 8 TPB per 100 sweeps (so about 2 or so per 20-25 sweeps would be close to threshold) or about 3 TPB per 6 rowft using a drop cloth. Here are some photos Josh took of the culprits. See our recommendations for insecticides in the 2017 Pest Management Handbook. I put out an efficacy trial for TPB in alfalfa this morning and will report back the results of that. I tested everything we recommend for TPB on cotton. Here is a shot of all of the immatures in that field. There were hundreds in about 25 sweeps.



### Cotton Situation

As of 11 June 2017, the USDA NASS South Carolina Statistical Office estimated that about 95% of the crop has been planted, compared with 90% the previous week, 92% at this time last year, and 93% for the 5-year average. The condition of the crop was described as 31% excellent, 57% good, 12% fair, 0% poor, and 0% very poor.

### Cotton Insects

I stated in the newsletter last week that "...unless you have significant issues with aphids or plant bugs, most cotton will not need insecticide from now until after bloom." That is true, but some of our acres will need to be treated for plant bugs. We already have some areas reporting issues with tarnished plant bugs (TPB) in 7-node cotton, so go scout! Use a sweep net to check for TPBs, and monitor square retention. Plant bugs include TPB, cotton

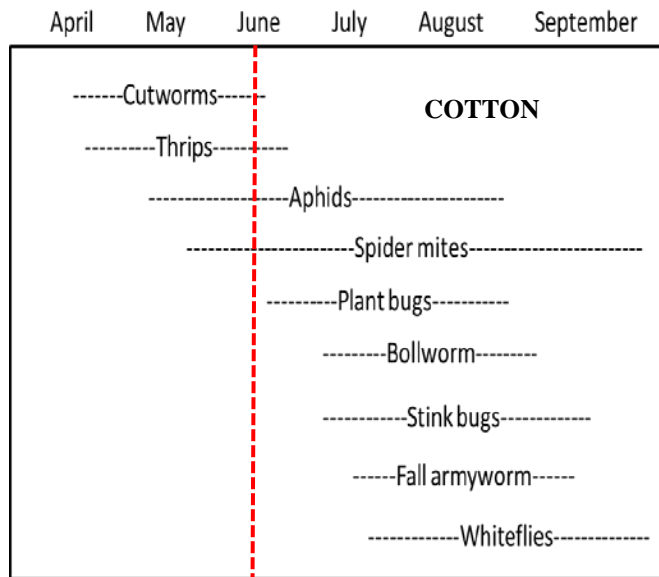
*The Clemson University Cooperative Extension Service offers its programs to people of all ages, regardless of race, color, gender, religion, national origin, disability, political beliefs, sexual orientation, marital or family status and is an equal opportunity employer. Clemson University Cooperating with U.S. Department of Agriculture, South Carolina Counties, Extension Service, Clemson, South Carolina.*

*Public Service Activities*

*The mention of any commercial product in this publication does not imply its endorsement by Clemson University over other products not named, nor does the omission imply that they are not satisfactory.*



fleahoppers, and other mirids, such as the clouded plant bug, so there is a complex of plant bugs that can contribute to early fruit loss. As you monitor square retention, check for plant bugs, and look for reasons why retention dips below 80%. As I mentioned last week, I like to examine the presence or absence of the first position square on the 3<sup>rd</sup> node down from the terminal. If you look at this one position on multiple plants weekly, you can monitor for issues with plant bugs. However, do not use just this method, as you will want to look down in the developing canopy for issues there also and check for TPB with a sweep net or drop cloth. Checking cotton before bloom with a sweep net is what should be done right now.

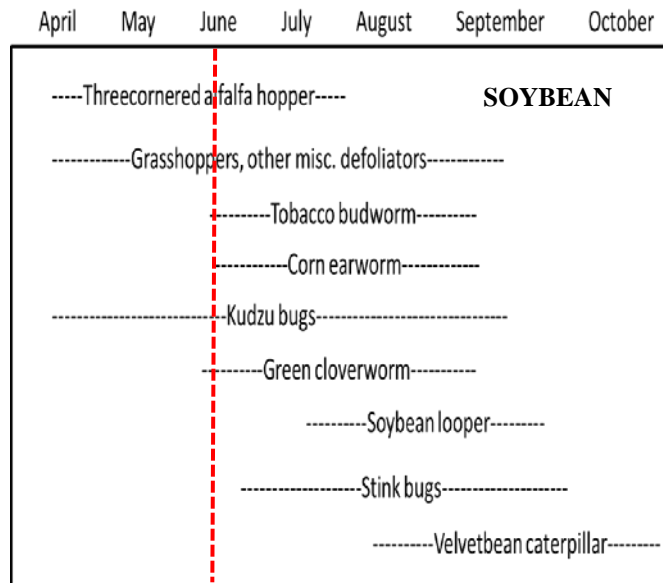


### Soybean Situation

As of 11 June 2017, the USDA NASS South Carolina Statistical Office estimated that about 69% of our soybean crop has been planted, compared with 57% the previous week, 71% at this time last year, and 68% for the 5-year average. About 48% of the crop has emerged, compared with 39% the previous week, 58% at this time last year, and 52% for the 5-year average. These are observed/perceived state-wide averages.

### Soybean Insects

Grasshoppers on young soybeans could still be an issue, so watch establishing stands. Older soybeans need to be checked for stem feeding insects, such as kudzu bugs and threecornered alfalfa hoppers (TCAH). Now is the time to notice TCAH and treat only if numbers of TCAH reach several per rowft or sweep and feeding damage (girdling of stems) is observed. Pyrethroid insecticides typically do a fine job in controlling TCAH. On older soybeans, start looking at defoliation also, and pay attention to the moths taking short flights from row to row while you are walking fields. Deer continue to be an issue on some of our soybeans here and throughout the state, and we will have some information from trials again this season that will show what products repel deer or deter feeding and what products fall short of preventing feeding injury.



*The Clemson University Cooperative Extension Service offers its programs to people of all ages, regardless of race, color, gender, religion, national origin, disability, political beliefs, sexual orientation, marital or family status and is an equal opportunity employer. Clemson University Cooperating with U.S. Department of Agriculture, South Carolina Counties, Extension Service, Clemson, South Carolina.*



## Bollworm & Tobacco Budworm

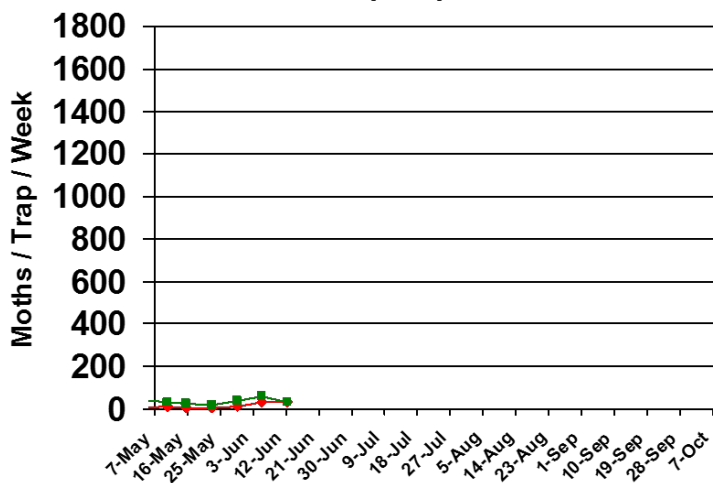


Captures of bollworm (BW) and tobacco budworm (TBW) moths in pheromone traps at EREC this season are shown below, as are the captures from 2016 for reference. Tobacco budworm continues to be important for our soybean acres and for any acres of non-Bt cotton. I provide these

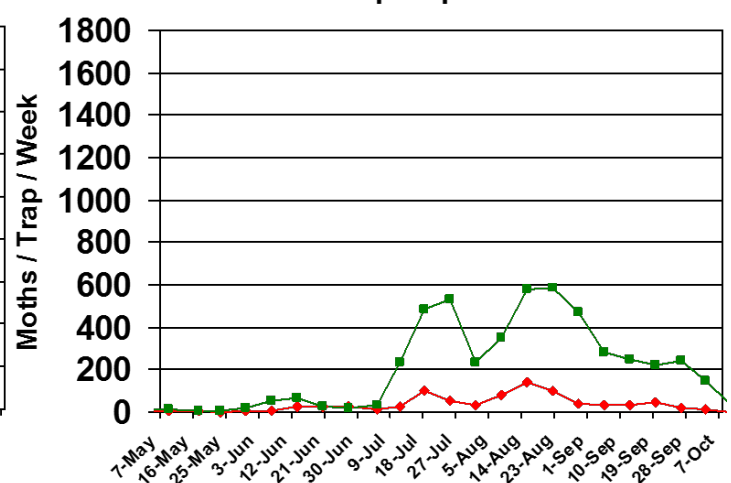
data as a measure of moth presence and activity in our local area near my research plots. The numbers are not necessarily representative of the species throughout the state.



### Pheromone Trap Capture SC - 2017

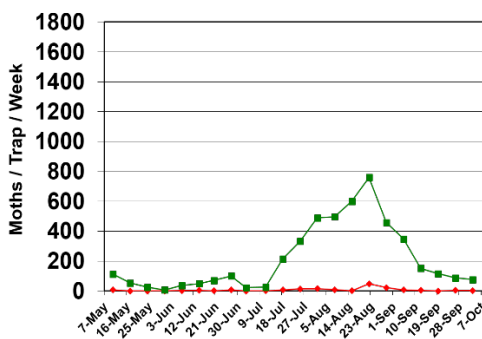


### Pheromone Trap Capture SC - 2016

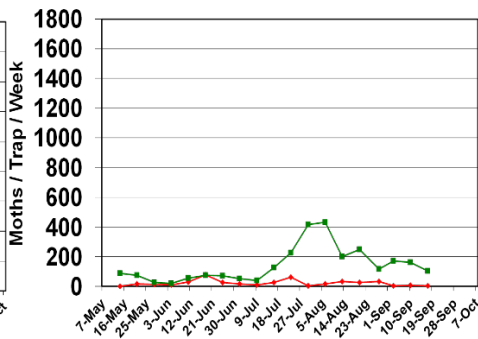


Trap data from 2007-2015 are shown below for reference to other years of trapping data from EREC:

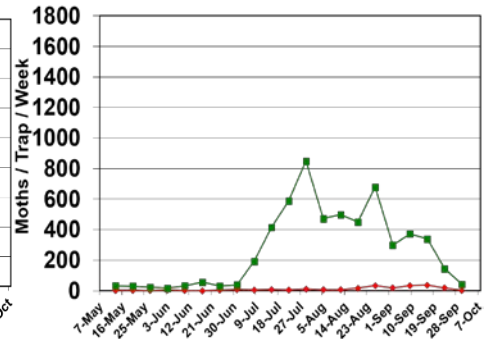
### Pheromone Trap Capture SC - 2007



### Pheromone Trap Capture SC - 2008



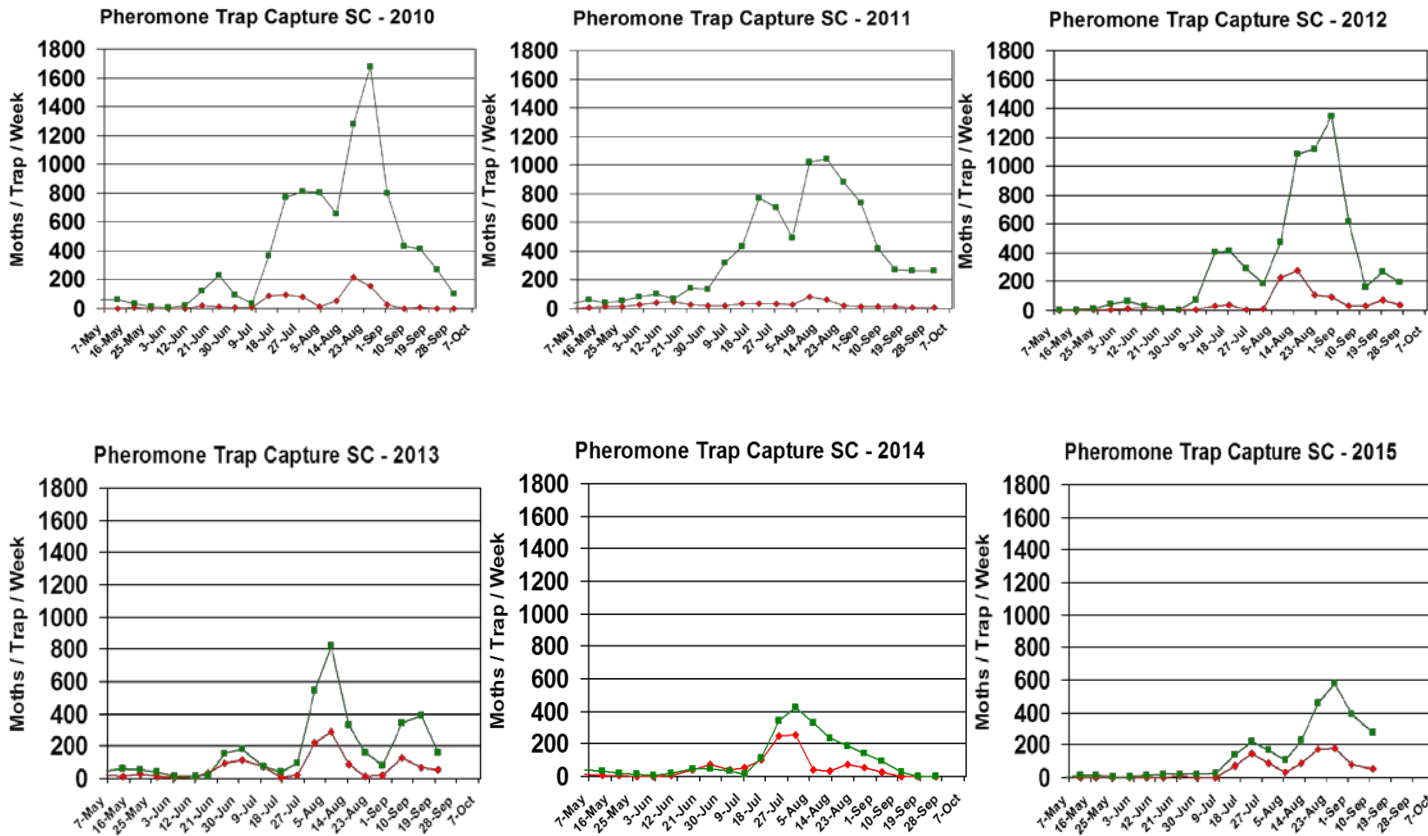
### Pheromone Trap Capture SC - 2009



The Clemson University Cooperative Extension Service offers its programs to people of all ages, regardless of race, color, gender, religion, national origin, disability, political beliefs, sexual orientation, marital or family status and is an equal opportunity employer. Clemson University Cooperating with U.S. Department of Agriculture, South Carolina Counties, Extension Service, Clemson, South Carolina.

Public Service Activities

The mention of any commercial product in this publication does not imply its endorsement by Clemson University over other products not named, nor does the omission imply that they are not satisfactory.



## **Pest Management Handbook – 2017**

Insect control recommendations are available online in the 2017 South Carolina Pest Management Handbook at: <http://www.clemson.edu/extension/agronomy/pest%20management%20handbook.html>

## **Free Mobile Apps: “Calibrate My Sprayer” and “Mix My Sprayer”**



Download our free mobile apps called “Calibrate My Sprayer” and “Mix My Sprayer” that help check for proper calibration of spraying equipment and help you with mixing user-defined pesticides, respectively, in custom units (available in both iOS and Android formats):

<http://www.clemson.edu/extension/mobile-apps/>

## **Need More Information?**

For more Clemson University Extension information: <http://www.clemson.edu/extension/>

For historical cotton/soybean insect newsletters: <http://www.clemson.edu/extension/agronomy/cotton1/newsletters.html>

*The Clemson University Cooperative Extension Service offers its programs to people of all ages, regardless of race, color, gender, religion, national origin, disability, political beliefs, sexual orientation, marital or family status and is an equal opportunity employer. Clemson University Cooperating with U.S. Department of Agriculture, South Carolina Counties, Extension Service, Clemson, South Carolina.*



Sincerely,

A handwritten signature in black ink that reads "Jeremy K. Greene".

Jeremy K. Greene, Ph.D.  
Professor of Entomology



Visit our website at:  
<http://www.clemson.edu>

---

*The Clemson University Cooperative Extension Service offers its programs to people of all ages, regardless of race, color, gender, religion, national origin, disability, political beliefs, sexual orientation, marital or family status and is an equal opportunity employer. Clemson University Cooperating with U.S. Department of Agriculture, South Carolina Counties, Extension Service, Clemson, South Carolina.*

*Public Service Activities*

*The mention of any commercial product in this publication does not imply its endorsement by Clemson University over other products not named, nor does the omission imply that they are not satisfactory.*