

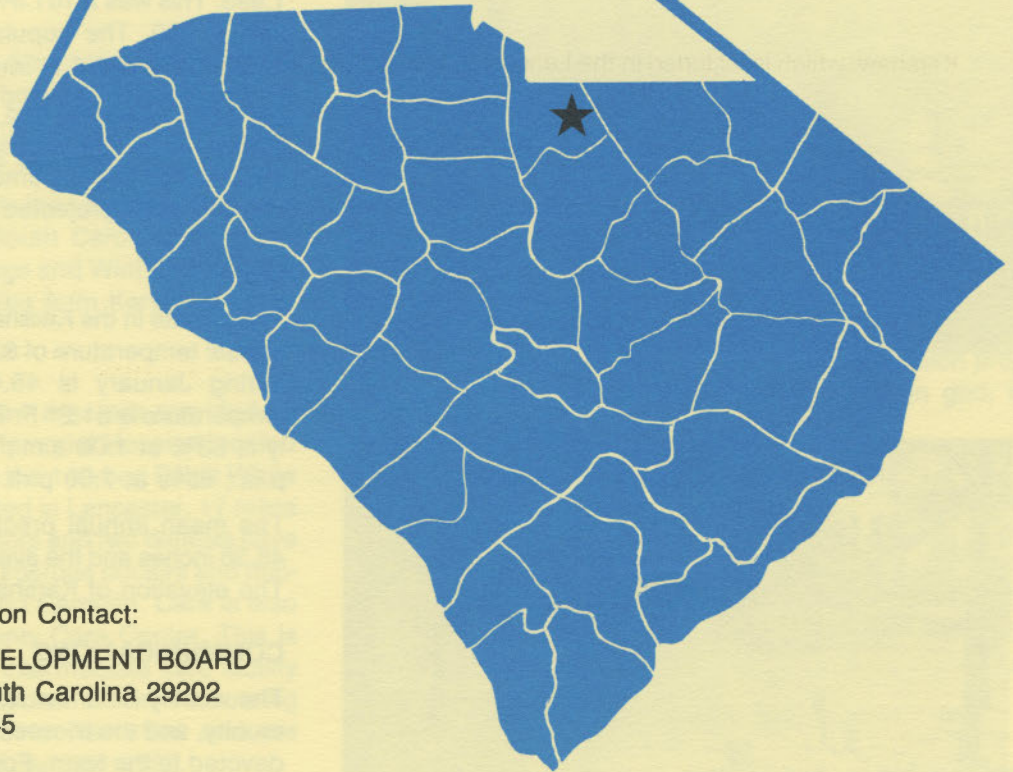
D 4925  
2. K36  
1985  
Copy 1

# KERSHAW

# south carolina



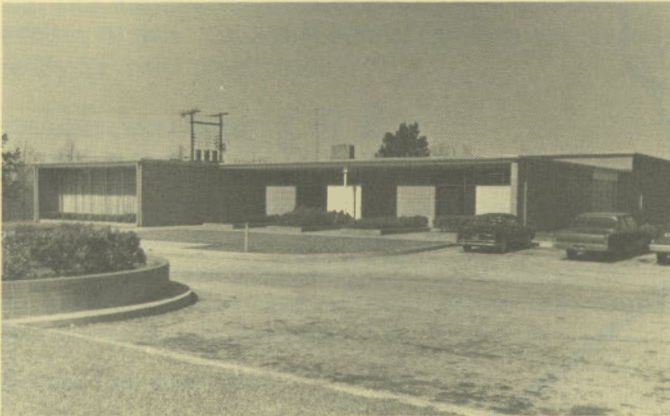
S. C. STATE LIBRARY  
MAY 2 1985  
STATE DOCUMENTS



For Additional Information Contact:  
SOUTH CAROLINA STATE DEVELOPMENT BOARD  
P. O. Box 927, Columbia, South Carolina 29202  
(803) 758-3145



Andrew Jackson High School



Stevens Parks Recreation Center



First Baptist Church



Kershaw Golf Club

## LOCATION

As depicted on the cover, Kershaw is in the north central section of the state in Lancaster County. Charleston, South Carolina's busiest port, is 145 miles south. Columbia is 56 miles southwest and Greenville is 123 miles west. Kershaw is 267 miles east of Atlanta; 642 miles south of New York; and 2,790 miles east of San Francisco.



## POPULATION

The 1980 census population of the city of Kershaw was 1,993. This was a 101.3% increase from the 1970 population of 990. The population within a 15-mile radius is 47,278 and within a 30-mile radius is 178,218.

Lancaster County had a 1980 census population of 53,361, a 23.2% increase from the 1970 population of 43,328. The 1984 estimated county population is 58,028 and the 1990 projected county population is 66,400.

## CLIMATE

The climate in the Kershaw area is temperate with a mean annual temperature of 63.5° F. The average temperature during January is 45.4° F, while the average July temperature is 81.2° F. The average relative humidity daily is 83% at 1:00 a.m.; 87% at 7:00 a.m.; 52% at 1:00 p.m.; 65% at 7:00 p.m.

The mean annual precipitation in the Kershaw area is 46.36 inches and the average growing season is 226 days. The elevation of Kershaw is 500 feet above sea level.

## COMMUNICATIONS

The weekly *Kershaw News-Era* is published in the community, and the tri-weekly *Lancaster News* has a section devoted to the town. Four large dailies are distributed in the community. Radio station WKSC-AM broadcasts from the community. Six television stations representing the three major networks are received in the town. South Carolina Telephone Corporation provides telephone service.

## GOVERNMENT

The community has a mayor-council form of municipal government. The six city council members and the mayor are elected for two-year terms. Lancaster County is governed by a seven-member county council and an administrator. The members are elected to four-year terms.

## POLICE AND FIRE

The Kershaw Police Department has five full-time and two part-time police officers. The department operates two radio equipped patrol cars. The Kershaw Fire Department has 22 volunteer firemen who operate two pumper trucks. Kershaw's insurance rating is Class 6.

## FINANCIAL INSTITUTIONS

Kershaw has two banks and one savings and loan association to serve the financial needs of the community. The banks have total assets of \$2.1 billion, while the savings and loan has assets of \$73 million.

## HOTELS AND MOTELS

Kershaw's two motels have a combined total of 43 overnight accommodations. Camden, 21 miles away, has nine motels with a combined total of 244 rooms.

## CHURCHES

Kershaw has 15 Protestant churches. Places of worship for those of Jewish and Catholic faiths are located in Camden, 21 miles away.

## EDUCATION

Kershaw, which is included in the Lancaster Area 1 School District, has three elementary schools; one middle school; and one high school. The student/teacher ratio is 14.3 to 1, with 120 teachers and 1,713 students.

Higher education facilities include the Lancaster Regional Campus of the University of South Carolina, 17 miles away. The York Technical College and Winthrop College are located in Rock Hill, 39 miles from Kershaw.

## MEDICAL SERVICES

Medical services for the Kershaw area are provided by the 121-bed Kershaw County Memorial Hospital located in Camden, 21 miles away, and the 149-bed Elliott White Springs Memorial Hospital located in Lancaster, 17 miles from the town. Four medical doctors and two dentists have private practices in Kershaw. Numerous doctors and dentists are located in Lancaster and Camden. Care is also provided by the Lancaster County Care Center. This is a County owned and operated intermediate care facility composed of 88 beds. An additional 22 skilled nursing home beds are currently under construction and are scheduled for occupancy as of January 1986.

## RECREATION AND CIVIC FACILITIES

Kershaw has two parks with playgrounds, outdoor cooking and picnic facilities. One park has a swimming pool

and two lighted tennis courts. A privately-sponsored organized recreation program with a full-time director is active in the community. Organized recreation includes bowling, billiards, baseball, softball and swimming. The community also has a recreation center. The Kershaw Country Club offers a nine-hole golf course. Lake Wateree, 15 miles away, provides facilities for fishing, swimming, boating, sailing and water skiing. The 2,300-acre Kershaw County Park is 21 miles away.

## POWER

Electric power is available to the community and surrounding areas from Duke Power Company and Lynches River Electric Cooperative. Duke Power, the nation's eighth-largest investor-owned operating electric utility, provides installation of service to industrial customers at no cost to the customer in most cases.

Duke Power Company representatives are available to assist industrial prospects at no cost or obligation in analyzing their electricity needs.

Electric power for Lynches River Electric Cooperative is supplied by Central Electric Power Cooperative and South Carolina Public Service Authority. The generation capacity of plants in operation or under construction totals over 3,200 megawatts with approximately 73% produced from coal. Interconnections are maintained with all neighboring power suppliers. Sufficient reserves are available to meet immediate and future industrial power requirements. Economic Development Incentive Rates are available for qualifying industries.

## FUELS

Natural gas is supplied by Lancaster County Gas Authority.

## WATER

The Town of Kershaw obtains its municipal water supply from Hanging Rock Creek. The system is capable of supplying water at a maximum rate of 500,000 gpd and has a daily load of 280,000 gallons. Treated water storage consists of 100,000 gallons in elevated storage and 200,000 gallons in ground storage. A water plant expansion project, increasing treatment capacity to 1 million gpd, is scheduled to be completed by late 1985.

Analysis of water supplied in the community:

Total solids	88 mg/L
Alkalinity	48 mg/L
Calcium	3 mg/L
Hardness	14 mg/L
Iron	.08 mg/L
pH	7.6

## SEWER

Kershaw uses activated sludge and a conventional digester to dispose of the community's wastewater. The system is designed to treat 250,000 gpd and currently handles 356,000 gpd. Planning is underway to upgrade system capacity to 500,000 gpd.

## LABOR

Because labor information may change in this area, a current labor availability report prepared and kept up to date by the S. C. State Development Board will be furnished to prospective manufacturers at their request. The comprehensive report will include sources of recruitable labor, labor force characteristics, work force skill levels, earnings data and other pertinent information. The S. C. State Board for Technical and Comprehensive Education has the resources to recruit and train workers in accordance with a company's entry criteria. This training is at little or no cost to the employer. A lead-time schedule is developed to coordinate recruiting, testing, selecting, and training. This assures that persons will be able to move from training to their respective jobs at the time the plant is ready for initial production.

## TRANSPORTATION

Kershaw is served by one interstate highway, I-20 (23 miles), two United States highways and two South Carolina highways. The community is served by the Norfolk Southern Railroad Corporation. Kershaw is served by 33 authorized motor carriers; one of which has terminal facilities in nearby Camden.

### Freight Delivery Times:

To:	By Rail:	By Truck:
Atlanta	2 days	1 day
Baltimore	3 days	3 days
Chicago	4 days	3 days
Houston	6 days	3 days
New York	4 days	4 days
St. Louis	4 days	4 days
San Francisco	6 days	5 days

The Columbia Metropolitan Airport, 53 miles away, offers regularly scheduled commercial airline service on Delta, United, Eastern, Piedmont, Bankair and American. It also has a modern air freight terminal. Private aircraft utilize

## MAJOR EMPLOYERS

Name	Product or Service	Employees
Duracell USA	Dry cell batteries	813
Joslyn Clark Controls, Inc.	Electric motor controls	233
Lehigh-Lancaster Inc.	Galvanizing & fabrication	300
Skyline Ltd.	Children's apparel	84
Springs Industries Inc. (7 plants)	Fabrics, offset printing, sheets	6,473

Lancaster County Airport which has a 6,000-foot paved and lighted runway. Services available at the Lancaster County Airport are RBN, major airframe and major powerplant repairs, 100LL fuel, Unicom and Vortac.

## FOREIGN TRADE ZONE

A Foreign Trade Zone is located in Summerville, South Carolina, 25 miles from the Port of Charleston and 120 miles from the community. The Foreign Trade Zone allows manufacturers to store, manufacture, or process goods without paying U.S. Customs duties or worrying about quota compliance. This Foreign Trade Zone is served by a multimode transportation network which provides excellent accessibility to market areas.

## TAXES

The assessment on industrial property in South Carolina is 10.5% of the market value. New industry is granted a five-year moratorium on general county taxes (with the exception of school taxes). The city tax rate is \$7.60 per \$100 of assessed value. The Lancaster County tax rate is \$16.20 per \$100 of assessed value. The effective tax rate for the town of Kershaw (tax liability per \$100 of market value) is \$.80. The effective county rate is \$1.70. The state has no tax on a manufacturer's inventories, goods-in-process, raw materials or finished goods. Treatment facilities or equipment of manufacturing plants which control water or air pollution are exempt from all property taxation.

## INDUSTRIAL SITES

Industrial sites are available in Kershaw with a wide range of geographic and topographic features. In all probability, a site that will meet the needs of most industries' requirements has been identified, catalogued, and entered into the State Development Board's Computerized Site Selection System. Detailed site information is available and will be furnished upon request.

