

SCSL Digital Collections

Infant mortality and selected birth characteristics : 2017 South Carolina residence data

Item Type	Text
Publisher	South Carolina State Library
Rights	Copyright status undetermined. For more information contact, South Carolina State Library, 1500 Senate Street, Columbia, South Carolina 29201.
Download date	2024-09-11 23:12:04
Link to Item	http://hdl.handle.net/10827/29232

NOVEMBER 2018

Infant Mortality and Selected Birth Characteristics

2017 South Carolina Residence Data

**South Carolina Department of Health
and Environmental Control**

Vital Statistics

2600 Bull Street
Columbia, SC 29201

Phone: (803) 898-3649

Fax: (803) 898-3661

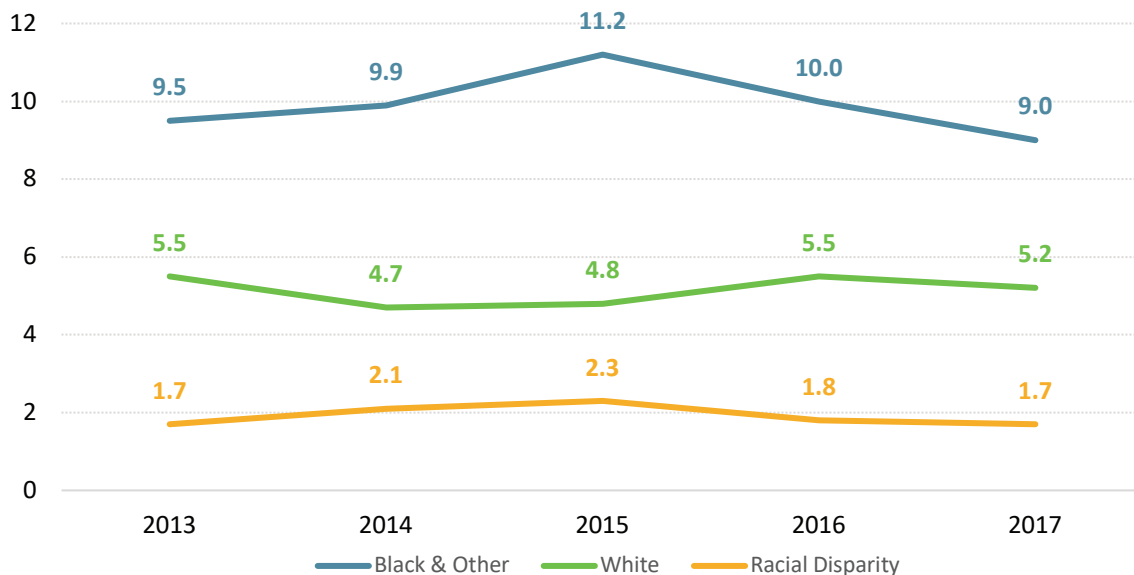


Executive Summary

Infant mortality, defined as the death of a live-born baby before his or her first birthday, is a reflection of the overall state of a population's health. The infant mortality rate is the number of babies who died during the first year of life for every 1,000 live births, and its reduction is a Leading Health Indicator of Healthy People 2020, which has established a national goal of no more than 6.0 infant deaths per 1,000 live births.¹ The South Carolina (SC) Department of Health and Environmental Control (DHEC) collects and monitors infant mortality data in effort to improve the health of mothers and babies in our state.

In SC, the infant mortality rate decreased 7% from 7.0 infant deaths per 1,000 live births in 2016 to 6.5 infant deaths per 1,000 live births in 2017. While the population as a whole has experienced some success, disparities continue to persist when looking at birth outcomes. The infant mortality rate among the minority population in 2017 was 9.0 infant deaths per 1,000 live births, and was 1.7 times higher than in the white population (5.2 infant deaths per 1,000 live births); and the racial disparity trend has not improved over the past 5 years (see Figure below).

Trend in Infant Mortality, by race: 2013-2017 Rate per 1,000 live births



Source: SC DHEC Vital Statistics

While the 2017 infant mortality rates in both the neonatal (less than 28 days after birth) and postneonatal (28-364 days after birth) periods were higher among minorities than whites, notable decreases were seen from 2016 to 2017. Between 2016 and 2017, there was a 15.5% decrease in the neonatal mortality rate in the minority population. This was largely driven by fewer neonatal deaths from preterm birth and low birthweight causes (from 40 deaths in 2016 to 29 deaths in 2017). There was a 16.7% decrease in postneonatal mortality rate in the white population. This was largely driven by fewer postneonatal deaths from birth defects (from 24 deaths in 2016 to 7 deaths in 2017).

The top five leading causes of infant death in 2017 were due to birth defects, disorders related to short gestation and low birthweight, maternal complications of pregnancy, accidents, and Sudden Infant Death Syndrome (SIDS). From 2016 to 2017, there was a 24.7% decrease in the number of infant deaths from birth defects (from 85 deaths in 2016 to 64 deaths in 2017). The number of deaths due to preterm birth/low birthweight decreased by 8.8%, from 57 in 2016 to 52 in 2017. However, the number of infant deaths due to maternal complications of pregnancy increased 70%, from 20 in 2016 to 34 in 2017.

SC made some improvement among several risk factors known to be associated with poor pregnancy and infant outcomes in the past year. Looking at all live births, tobacco use during pregnancy decreased significantly from 9.1% in 2016 to 8.4% in 2017, and receipt of adequate and adequate plus prenatal care increased significantly overall and across all racial groups (see Table 12).

While the overall infant mortality rate in South Carolina dropped slightly from 2016 to 2017, it remains higher than the US rate of 5.9 deaths per 1,000 live births.² DHEC is committed to improving the health of women and infants before, during, and after pregnancy. The agency continues to partner with organizations such as the SC Hospital Association, SC Department of Health and Human Services, and SC Chapter of the March of Dimes to explore and implement innovative strategies that promote improved pregnancy and health outcomes for mothers, babies, and families in our state.

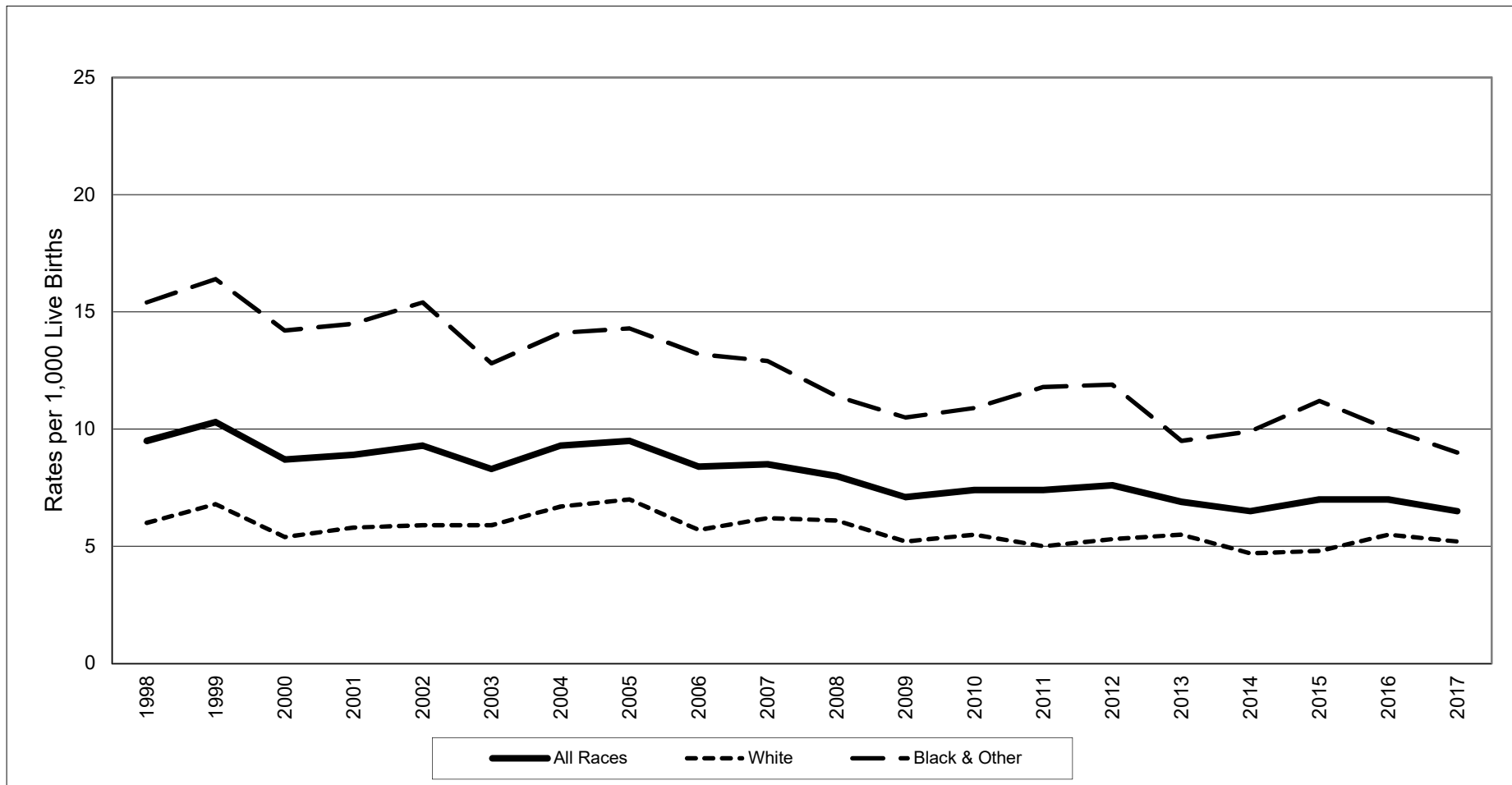
SC has the opportunity to participate in the Collaborative Improvement and Innovation Network, or ColIN, led by the Association of Maternal and Child Health Programs, using the science of quality improvement and collaborative learning to reduce infant mortality as well as disparities in infant mortality by addressing preconception care, perinatal regionalization, smoking cessation, early elective deliveries, and safe sleep environments.

Several other practices and programs that address infant mortality in SC include: hospital and physician emphasis on patient quality and safety; evidence-based maternal and infant home visitation programs; postpartum newborn home visits; March of Dimes funding, research, and education; and the SC Birth Defects Program. DHEC staff and partners work diligently to give all babies their best chance to live a healthy and long life.

References:

1. Healthy People 2020. Washington, DC: US Department of Health and Human Services, Office of Disease Prevention and Health Promotion. Retrieved from <https://www.healthypeople.gov/node/3492/objectives#4825>.
2. Kochanek KD, Murphy SL, Xu JQ, Arias E. Mortality in the United States, 2016. NCHS Data Brief, no 293. Hyattsville, MD: National Center for Health Statistics. 2017.

South Carolina Infant Mortality Rates¹ by Race² Residence Data, 1998-2017



	1998	1999	2000	2001	2002	2003	2004	2005	2006	2007	2008	2009	2010	2011	2012	2013	2014	2015	2016	2017
All Races	9.5	10.3	8.7	8.9	9.3	8.3	9.3	9.5	8.4	8.5	8.0	7.1	7.4	7.4	7.6	6.9	6.5	7.0	7.0	6.5
White	6.0	6.8	5.4	5.8	5.9	5.9	6.7	7.0	5.7	6.2	6.1	5.2	5.5	5.0	5.3	5.5	4.7	4.8	5.5	5.2
Black & Other	15.4	16.4	14.2	14.5	15.4	12.8	14.1	14.3	13.2	12.9	11.4	10.5	10.9	11.8	11.9	9.5	9.9	11.2	10.0	9.0

¹Rates per 1,000 live births

²Race of mother

Source: SC DHEC, Vital Statistics

Table 1.
 Infant Mortality Rates¹ with 95% Confidence Intervals²
 South Carolina, 1998-2017
 (Residence Data)

Year	Number of Live Births	Number of Infant Deaths	Infant Mortality Rate	95% Confidence Intervals
1998	53,833	511	9.5	(8.7, 10.3)
1999	54,706	564	10.3	(9.4, 11.2)
2000	55,964	488	8.7	(7.9, 9.5)
2001	55,748	496	8.9	(8.1, 9.7)
2002	54,453	507	9.3	(8.5, 10.1)
2003	55,461	463	8.3	(7.5, 9.1)
2004	56,543	524	9.3	(8.5, 10.1)
2005	57,538	549	9.5	(8.7, 10.3)
2006	62,191	520	8.4	(7.6, 9.1)
2007	62,933	538	8.5	(7.8, 9.3)
2008	63,077	504	8.0	(7.3, 8.7)
2009	60,682	430	7.1	(6.4, 7.8)
2010	58,325	430	7.4	(6.7, 8.1)
2011	57,338	423	7.4	(6.7, 8.1)
2012	57,100	435	7.6	(6.9, 8.3)
2013	56,743	389	6.9	(6.2, 7.6)
2014	57,631	372	6.5	(5.8, 7.2)
2015	58,135	405	7.0	(6.3, 7.7)
2016	57,337	401	7.0	(6.3, 7.7)
2017	57,030	371	6.5	(5.8, 7.2)

Table 2.
 Infant Mortality Rates¹ with 95% Confidence Intervals²
 South Carolina
 1998-2002, 2003-2007, 2008-2012, 2013-2017
 (Residence Data)

Years	Number of Live Births	Number of Infant Deaths	Infant Mortality Rate	95% Confidence Intervals
1998-2002	274,704	2,566	9.3	(9.0, 9.7)
2003-2007	294,666	2,594	8.8	(8.5, 9.1)
2008-2012	296,522	2,222	7.5	(7.2, 7.8)
2013-2017	286,876	1,938	6.8	(6.5, 7.1)

¹Rates per 1,000 live births

² $r \pm 61.981 (r/n)^{1/2}$, where r = infant mortality rate and n = number of live births

Table 3.
 Infant, Neonatal and Postneonatal Mortality and Mortality Rates¹ by Race²
 South Carolina
 2013, 2014, 2015, 2016 and 2017
 (Residence Data)

Infant Mortality									
	Total			White			Black & Other		
Year	Number of Live Births	Number of Infant Deaths	Rate	Number of Live Births	Number of Infant Deaths	Rate	Number of Live Births	Number of Infant Deaths	Rate
2013	56,743*	389	6.9	37,177	204	5.5	19,513	185	9.5
2014	57,631*	372	6.5	37,923	177	4.7	19,660	195	9.9
2015	58,135*	405*	7.0	38,459	185	4.8	19,611	219	11.2
2016	57,337*	401	7.0	38,264	210	5.5	19,025	191	10.0
2017	57,030*	371*	6.5	37,601	196	5.2	19,385	174	9.0

Neonatal Mortality (<28 days)									
	Total			White			Black & Other		
Year	Number of Live Births	Number of Infant Deaths	Rate	Number of Live Births	Number of Infant Deaths	Rate	Number of Live Births	Number of Infant Deaths	Rate
2013	56,743*	263	4.6	37,177	138	3.7	19,513	125	6.4
2014	57,631*	246	4.3	37,923	113	3.0	19,660	133	6.8
2015	58,135*	265*	4.6	38,459	121	3.1	19,611	143	7.3
2016	57,337*	253	4.4	38,264	117	3.1	19,025	136	7.1
2017	57,030*	239*	4.2	37,601	121	3.2	19,385	117	6.0

Postneonatal Mortality (28-364 days)									
	Total			White			Black & Other		
Year	Number of Live Births	Number of Infant Deaths	Rate	Number of Live Births	Number of Infant Deaths	Rate	Number of Live Births	Number of Infant Deaths	Rate
2013	56,743*	126	2.2	37,177	66	1.8	19,513	60	3.1
2014	57,631*	126	2.2	37,923	64	1.7	19,660	62	3.2
2015	58,135*	140	2.4	38,459	64	1.7	19,611	76	3.9
2016	57,337*	148	2.6	38,264	93	2.4	19,025	55	2.9
2017	57,030*	132	2.3	37,601	75	2.0	19,385	57	2.9

¹Rates per 1,000 live births

²Race of mother

*Includes unknown race

Table 4.
Infant Mortality and Infant Mortality Rates¹
South Carolina and Each County, 2017, 2015-2017, 2012-2014
(Residence Data)

County of Residence	2017		2015-2017		2012-2014	
	Number	Rate	Number	Rate	Number	Rate
South Carolina	371	6.5	1,177	6.8	1,196	7.0
Abbeville	2	8.3	5	7.2	10	13.2
Aiken	24	12.9	45	7.7	39	7.0
Allendale	-	0	2	8.4	3	10.4
Anderson	14	6.1	52	7.6	49	7.3
Bamberg	2	15.7	4	10.6	4	8.7
Barnwell	5	20.7	8	10.9	10	11.1
Beaufort	8	4.0	25	4.1	23	3.7
Berkeley	14	5.2	39	4.8	57	7.3
Calhoun	2	14.1	9	21.7	-	0
Charleston	21	4.4	72	4.9	70	4.9
Cherokee	4	6.0	10	5.0	11	5.5
Chester	-	0	8	7.3	12	10.0
Chesterfield	4	7.9	14	9.3	16	10.2
Clarendon	4	12.5	9	9.3	15	14.1
Colleton	2	4.4	10	7.3	13	9.7
Darlington	6	8.1	23	9.7	18	7.6
Dillon	7	16.4	15	12.2	11	8.5
Dorchester	10	5.4	35	6.4	27	4.9
Edgefield	-	0	3	5.1	8	12.3
Fairfield	2	9.1	7	11.0	7	10.8
Florence	14	8.2	52	10.3	76	14.3
Georgetown	7	13.3	10	6.0	13	7.4
Greenville	41	6.4	110	5.8	106	5.7
Greenwood	8	9.3	26	10.5	18	6.8
Hampton	-	0	4	6.4	7	10.4
Horry	15	4.7	63	6.7	64	7.0
Jasper	6	16.3	12	11.2	4	4.0
Kershaw	1	1.4	12	5.3	17	8.0
Lancaster	2	2.0	19	6.1	23	8.1
Laurens	6	7.6	21	9.0	21	9.5
Lee	4	21.3	6	11.2	3	5.4
Lexington	21	6.6	69	7.1	57	5.9
McCormick	-	0	1	5.9	3	16.5
Marion	5	14.0	15	13.6	15	12.8
Marlboro	1	3.4	13	14.3	7	7.7
Newberry	4	10.1	11	8.4	9	6.8
Oconee	4	5.5	15	6.6	11	4.7
Orangeburg	6	6.3	26	8.9	40	12.7
Pickens	8	6.8	21	5.8	25	6.9
Richland	31	6.7	119	8.2	120	8.4
Saluda	-	0	-	0	7	9.3
Spartanburg	24	6.3	65	5.9	44	4.1
Sumter	8	5.8	32	7.5	24	5.3
Union	-	0	4	4.2	4	4.3
Williamsburg	3	8.5	6	5.8	10	10.0
York	21	7.1	50	5.6	65	7.4

¹Rates per 1,000 live births. Rates calculated with 20 or fewer deaths are unreliable and should be used cautiously.

Table 4-A.
White¹ Infant Mortality and Infant Mortality Rates²
South Carolina and Each County, 2017, 2015-2017, 2012-2014
(Residence Data)

County of Residence	2017		2015-2017		2012-2014	
	Number	Rate	Number	Rate	Number	Rate
South Carolina	196	5.2	591	5.2	578	5.2
Abbeville	-	0	-	0	6	11.6
Aiken	14	11.3	22	5.7	20	5.4
Allendale	-	0	-	0	-	0
Anderson	12	6.7	35	6.4	30	5.7
Bamberg	-	0	-	0	-	0
Barnwell	3	23.4	6	16.1	2	4.9
Beaufort	4	2.7	12	2.7	16	3.6
Berkeley	10	5.1	25	4.2	22	3.9
Calhoun	-	0	2	9.1	-	0
Charleston	4	1.2	24	2.4	32	3.4
Cherokee	3	6.0	8	5.4	8	5.5
Chester	-	0	5	8.2	5	7.8
Chesterfield	1	3.4	7	7.8	12	13.0
Clarendon	2	12.9	4	9.0	5	11.0
Colleton	2	8.1	5	6.5	2	2.8
Darlington	4	10.9	10	8.5	7	5.8
Dillon	2	10.3	5	9.7	2	3.8
Dorchester	4	3.1	18	4.7	15	3.9
Edgefield	-	0	1	3.2	3	8.9
Fairfield	-	0	1	4.4	-	0
Florence	4	5.5	19	8.1	15	5.9
Georgetown	4	13.8	6	6.3	6	6.2
Greenville	24	4.9	67	4.6	66	4.7
Greenwood	3	5.6	10	6.4	8	5.0
Hampton	-	0	-	0	3	10.9
Horry	10	4.1	44	5.9	45	6.2
Jasper	4	17.9	6	9.9	4	7.2
Kershaw	1	2.0	7	4.3	12	7.8
Lancaster	1	1.4	14	6.3	13	6.5
Laurens	4	7.0	11	6.6	15	9.6
Lee	2	45.5	2	15.9	-	0
Lexington	15	6.0	48	6.2	36	4.7
McCormick	-	0	-	0	-	0
Marion	2	15.6	3	8.1	1	2.8
Marlboro	1	8.7	6	15.2	3	8.5
Newberry	1	3.9	3	3.7	5	6.4
Oconee	4	6.0	14	6.8	9	4.3
Orangeburg	2	6.6	5	5.4	7	7.6
Pickens	8	7.6	19	5.7	24	7.3
Richland	8	4.1	34	5.5	28	4.7
Saluda	-	0	-	0	3	5.4
Spartanburg	17	6.0	46	5.6	25	3.2
Sumter	4	6.2	7	3.6	7	3.3
Union	-	0	2	3.2	4	6.7
Williamsburg	-	0	-	0	4	12.0
York	12	5.8	28	4.4	48	7.6

¹Race of mother

²Rates per 1,000 live births. Rates calculated with 20 or fewer deaths are unreliable and should be used cautiously.

Table 4-B.

Black and Other¹ Infant Mortality and Infant Mortality Rates²
 South Carolina and Each County, 2017, 2015-2017, 2012-2014
 (Residence Data)

County of Residence	2017		2015-2017		2012-2014	
	Number	Rate	Number	Rate	Number	Rate
South Carolina	174	9.0	584	10.1	618	10.5
Abbeville	2	26.7	5	23.6	4	16.5
Aiken	9	14.7	22	11.4	19	10.4
Allendale	-	0	2	9.8	3	12.9
Anderson	2	4.0	17	11.9	19	13.1
Bamberg	2	26.0	4	16.9	4	12.7
Barnwell	2	17.7	2	5.5	8	16.3
Beaufort	4	7.4	13	8.3	7	4.1
Berkeley	4	5.6	14	6.4	35	16.1
Calhoun	2	30.8	7	36.1	-	0
Charleston	17	11.3	48	10.1	38	7.6
Cherokee	1	6.0	2	3.9	3	5.4
Chester	-	0	3	6.2	7	12.4
Chesterfield	3	13.8	7	11.6	4	6.3
Clarendon	2	12.0	5	9.6	10	16.4
Colleton	-	0	5	8.3	11	17.6
Darlington	2	5.3	13	11.0	11	9.4
Dillon	5	21.6	10	14.1	9	11.8
Dorchester	6	10.5	17	10.1	12	7.3
Edgefield	-	0	2	7.2	5	16.0
Fairfield	2	14.0	6	14.5	7	16.8
Florence	10	10.4	33	12.2	61	22.0
Georgetown	3	12.6	4	5.7	7	8.9
Greenville	17	11.0	43	9.4	40	9.0
Greenwood	5	15.2	16	17.4	10	9.4
Hampton	-	0	4	10.4	4	10.0
Horry	5	6.8	19	9.2	19	9.9
Jasper	2	13.8	6	12.8	-	0
Kershaw	-	0	5	7.7	5	8.5
Lancaster	1	3.6	5	5.8	10	12.2
Laurens	2	9.0	10	15.1	6	9.2
Lee	2	13.9	4	9.8	3	7.6
Lexington	6	8.5	20	10.1	21	10.5
McCormick	-	0	1	8.8	3	25.9
Marion	3	13.2	12	16.3	14	17.2
Marlboro	-	0	7	13.6	4	7.2
Newberry	3	21.6	8	16.0	4	7.4
Oconee	-	0	1	4.7	2	9.3
Orangeburg	4	6.1	21	10.5	33	14.8
Pickens	-	0	2	5.9	1	3.1
Richland	23	8.5	85	10.2	92	11.0
Saluda	-	0	-	0	4	19.9
Spartanburg	7	7.0	19	6.7	19	6.8
Sumter	4	5.4	25	10.7	17	7.1
Union	-	0	2	6.1	-	0
Williamsburg	3	12.0	6	8.2	6	9.0
York	9	10.3	22	8.8	17	7.0

¹Race of mother²Rates per 1,000 live births. Rates calculated with 20 or fewer deaths are unreliable and should be used cautiously.

Table 5.

Infant, Neonatal and Postneonatal Mortality Rates¹ by Race²
 and Percent Change from 2016 to 2017
 South Carolina
 (Residence Data)

Infant Mortality			
Year	Total	White	Black & Other
2016	7.0	5.5	10.0
2017	6.5	5.2	9.0
Percent Change	-7.1%	-5.5%	-10.0%

Neonatal Mortality			
Year	Total	White	Black & Other
2016	4.4	3.1	7.1
2017	4.2	3.2	6.0
Percent Change	-4.5%	3.2%	-15.5%

Postneonatal Mortality			
Year	Total	White	Black & Other
2016	2.6	2.4	2.9
2017	2.3	2.0	2.9
Percent Change	-11.5%	-16.7%	0.0%

¹Rates per 1,000 live births

²Race of mother

Table 6.
Neonatal Mortality and Neonatal Mortality Rates¹
South Carolina and Each County, 2017, 2015-2017, 2012-2014
(Residence Data)

County of Residence	2017		2015-2017		2012-2014	
	Number	Rate	Number	Rate	Number	Rate
South Carolina	239	4.2	757	4.4	779	4.5
Abbeville	2	8.3	3	4.3	7	9.2
Aiken	14	7.5	28	4.8	27	4.9
Allendale	-	0	2	8.4	3	10.4
Anderson	8	3.5	32	4.7	27	4.0
Bamberg	2	15.7	4	10.6	4	8.7
Barnwell	2	8.3	2	2.7	5	5.6
Beaufort	6	3.0	17	2.8	17	2.8
Berkeley	7	2.6	24	2.9	34	4.3
Calhoun	2	14.1	8	19.3	-	0
Charleston	13	2.7	40	2.7	50	3.5
Cherokee	3	4.5	7	3.5	5	2.5
Chester	-	0	4	3.7	8	6.7
Chesterfield	3	5.9	9	6.0	13	8.3
Clarendon	1	3.1	3	3.1	8	7.5
Colleton	2	4.4	4	2.9	8	6.0
Darlington	4	5.4	9	3.8	8	3.4
Dillon	6	14.1	10	8.1	8	6.2
Dorchester	5	2.7	19	3.5	21	3.8
Edgefield	-	0	2	3.4	5	7.7
Fairfield	1	4.5	4	6.3	6	9.3
Florence	10	5.9	34	6.7	53	10.0
Georgetown	5	9.5	7	4.2	9	5.1
Greenville	28	4.4	69	3.6	71	3.8
Greenwood	5	5.8	18	7.3	14	5.3
Hampton	-	0	2	3.2	3	4.4
Horry	11	3.5	41	4.3	40	4.4
Jasper	3	8.1	9	8.4	4	4.0
Kershaw	-	0	7	3.1	12	5.6
Lancaster	1	1.0	16	5.2	16	5.6
Laurens	5	6.3	15	6.4	15	6.8
Lee	3	16.0	5	9.3	1	1.8
Lexington	12	3.7	42	4.3	40	4.1
McCormick	-	0	1	5.9	1	5.5
Marion	4	11.2	11	9.9	11	9.4
Marlboro	1	3.4	10	11.0	4	4.4
Newberry	1	2.5	6	4.6	7	5.3
Oconee	1	1.4	9	4.0	8	3.5
Orangeburg	6	6.3	25	8.5	25	7.9
Pickens	4	3.4	16	4.4	15	4.1
Richland	21	4.5	79	5.5	73	5.1
Saluda	-	0	-	0	5	6.6
Spartanburg	14	3.7	38	3.4	22	2.1
Sumter	7	5.1	25	5.8	12	2.7
Union	-	0	3	3.2	2	2.1
Williamsburg	3	8.5	4	3.9	6	6.0
York	13	4.4	34	3.8	46	5.2

¹Rates per 1,000 live births. Rates calculated with 20 or fewer deaths are unreliable and should be used cautiously.

Table 6-A.
White¹ Neonatal Mortality and Neonatal Mortality Rates²
South Carolina and Each County, 2017, 2015-2017, 2012-2014
(Residence Data)

County of Residence	2017		2015-2017		2012-2014	
	Number	Rate	Number	Rate	Number	Rate
South Carolina	121	3.2	359	3.1	369	3.3
Abbeville	-	0	-	0	4	7.7
Aiken	8	6.4	14	3.6	12	3.2
Allendale	-	0	-	0	-	0
Anderson	7	3.9	21	3.9	16	3.0
Bamberg	-	0	-	0	-	0
Barnwell	1	7.8	1	2.7	1	2.4
Beaufort	3	2.0	8	1.8	10	2.2
Berkeley	4	2.0	14	2.3	9	1.6
Calhoun	-	0	2	9.1	-	0
Charleston	2	0.6	11	1.1	25	2.7
Cherokee	2	4.0	5	3.4	4	2.7
Chester	-	0	1	1.6	3	4.7
Chesterfield	1	3.4	6	6.7	10	10.8
Clarendon	-	0	1	2.3	1	2.2
Colleton	2	8.1	2	2.6	-	0
Darlington	3	8.2	5	4.2	3	2.5
Dillon	2	10.3	4	7.7	2	3.8
Dorchester	2	1.5	7	1.8	10	2.6
Edgefield	-	0	-	0	1	3.0
Fairfield	-	0	-	0	-	0
Florence	4	5.5	11	4.7	8	3.1
Georgetown	3	10.4	4	4.2	4	4.1
Greenville	18	3.7	41	2.8	45	3.2
Greenwood	3	5.6	9	5.8	7	4.4
Hampton	-	0	-	0	2	7.3
Horry	8	3.3	29	3.9	31	4.3
Jasper	1	4.5	3	5.0	4	7.2
Kershaw	-	0	5	3.1	8	5.2
Lancaster	1	1.4	12	5.4	10	5.0
Laurens	3	5.3	8	4.8	10	6.4
Lee	1	22.7	1	7.9	-	0
Lexington	7	2.8	25	3.3	27	3.5
McCormick	-	0	-	0	-	0
Marion	2	15.6	3	8.1	-	0
Marlboro	1	8.7	4	10.1	1	2.8
Newberry	-	0	1	1.2	4	5.1
Oconee	1	1.5	9	4.4	6	2.9
Orangeburg	2	6.6	5	5.4	3	3.3
Pickens	4	3.8	14	4.2	14	4.2
Richland	5	2.6	22	3.6	19	3.2
Saluda	-	0	-	0	2	3.6
Spartanburg	9	3.2	23	2.8	9	1.1
Sumter	4	6.2	7	3.6	4	1.9
Union	-	0	2	3.2	2	3.3
Williamsburg	-	0	-	0	3	9.0
York	7	3.4	19	3.0	35	5.5

¹Race of mother

²Rates per 1,000 live births. Rates calculated with 20 or fewer deaths are unreliable and should be used cautiously.

Table 6-B.

Black and Other¹ Neonatal Mortality and Neonatal Mortality Rates²
 South Carolina and Each County, 2017, 2015-2017, 2012-2014
 (Residence Data)

County of Residence	2017		2015-2017		2012-2014	
	Number	Rate	Number	Rate	Number	Rate
South Carolina	117	6.0	396	6.8	410	6.9
Abbeville	2	26.7	3	14.2	3	12.4
Aiken	5	8.2	13	6.7	15	8.2
Allendale	-	0	2	9.8	3	12.9
Anderson	1	2.0	11	7.7	11	7.6
Bamberg	2	26.0	4	16.9	4	12.7
Barnwell	1	8.8	1	2.8	4	8.2
Beaufort	3	5.6	9	5.8	7	4.1
Berkeley	3	4.2	10	4.6	25	11.5
Calhoun	2	30.8	6	30.9	-	0
Charleston	11	7.3	29	6.1	25	5.0
Cherokee	1	6.0	2	3.9	1	1.8
Chester	-	0	3	6.2	5	8.9
Chesterfield	2	9.2	3	5.0	3	4.7
Clarendon	1	6.0	2	3.8	7	11.5
Colleton	-	0	2	3.3	8	12.8
Darlington	1	2.7	4	3.4	5	4.3
Dillon	4	17.3	6	8.5	6	7.9
Dorchester	3	5.3	12	7.2	11	6.7
Edgefield	-	0	2	7.2	4	12.8
Fairfield	1	7.0	4	9.7	6	14.4
Florence	6	6.2	23	8.5	45	16.3
Georgetown	2	8.4	3	4.3	5	6.3
Greenville	10	6.5	28	6.1	26	5.9
Greenwood	2	6.1	9	9.8	7	6.6
Hampton	-	0	2	5.2	1	2.5
Horry	3	4.1	12	5.8	9	4.7
Jasper	2	13.8	6	12.8	-	0
Kershaw	-	0	2	3.1	4	6.8
Lancaster	-	0	4	4.6	6	7.3
Laurens	2	9.0	7	10.6	5	7.6
Lee	2	13.9	4	9.8	1	2.5
Lexington	5	7.1	16	8.1	13	6.5
McCormick	-	0	1	8.8	1	8.6
Marion	2	8.8	8	10.9	11	13.5
Marlboro	-	0	6	11.6	3	5.4
Newberry	1	7.2	5	10.0	3	5.6
Oconee	-	0	-	0	2	9.3
Orangeburg	4	6.1	20	10.0	22	9.8
Pickens	-	0	2	5.9	1	3.1
Richland	16	5.9	57	6.9	54	6.5
Saluda	-	0	-	0	3	14.9
Spartanburg	5	5.0	15	5.3	13	4.7
Sumter	3	4.0	18	7.7	8	3.4
Union	-	0	1	3.1	-	0
Williamsburg	3	12.0	4	5.5	3	4.5
York	6	6.9	15	6.0	11	4.5

¹Race of mother²Rates per 1,000 live births. Rates calculated with 20 or fewer deaths are unreliable and should be used cautiously.

Table 7.
Postneonatal Mortality and Postneonatal Mortality Rates¹
South Carolina and Each County, 2017, 2015-2017, 2012-2014
(Residence Data)

County of Residence	2017		2015-2017		2012-2014	
	Number	Rate	Number	Rate	Number	Rate
South Carolina	132	2.3	420	2.4	417	2.4
Abbeville	-	0	2	2.9	3	3.9
Aiken	10	5.4	17	2.9	12	2.2
Allendale	-	0	-	0	-	0
Anderson	6	2.6	20	2.9	22	3.3
Bamberg	-	0	-	0	-	0
Barnwell	3	12.4	6	8.2	5	5.6
Beaufort	2	1.0	8	1.3	6	1.0
Berkeley	7	2.6	15	1.8	23	2.9
Calhoun	-	0	1	2.4	-	0
Charleston	8	1.7	32	2.2	20	1.4
Cherokee	1	1.5	3	1.5	6	3.0
Chester	-	0	4	3.7	4	3.3
Chesterfield	1	2.0	5	3.3	3	1.9
Clarendon	3	9.3	6	6.2	7	6.6
Colleton	-	0	6	4.4	5	3.7
Darlington	2	2.7	14	5.9	10	4.2
Dillon	1	2.3	5	4.1	3	2.3
Dorchester	5	2.7	16	2.9	6	1.1
Edgefield	-	0	1	1.7	3	4.6
Fairfield	1	4.5	3	4.7	1	1.5
Florence	4	2.4	18	3.6	23	4.3
Georgetown	2	3.8	3	1.8	4	2.3
Greenville	13	2.0	41	2.1	35	1.9
Greenwood	3	3.5	8	3.2	4	1.5
Hampton	-	0	2	3.2	4	5.9
Horry	4	1.3	22	2.3	24	2.6
Jasper	3	8.1	3	2.8	-	0
Kershaw	1	1.4	5	2.2	5	2.3
Lancaster	1	1.0	3	1.0	7	2.5
Laurens	1	1.3	6	2.6	6	2.7
Lee	1	5.3	1	1.9	2	3.6
Lexington	9	2.8	27	2.8	17	1.8
McCormick	-	0	-	0	2	11.0
Marion	1	2.8	4	3.6	4	3.4
Marlboro	-	0	3	3.3	3	3.3
Newberry	3	7.5	5	3.8	2	1.5
Oconee	3	4.2	6	2.7	3	1.3
Orangeburg	-	0	1	0.3	15	4.7
Pickens	4	3.4	5	1.4	10	2.8
Richland	10	2.1	40	2.8	47	3.3
Saluda	-	0	-	0	2	2.7
Spartanburg	10	2.6	27	2.4	22	2.1
Sumter	1	0.7	7	1.6	12	2.7
Union	-	0	1	1.1	2	2.1
Williamsburg	-	0	2	1.9	4	4.0
York	8	2.7	16	1.8	19	2.2

¹Rates per 1,000 live births. Rates calculated with 20 or fewer deaths are unreliable and should be used cautiously.

Table 7-A.

White¹ Postneonatal Mortality and Postneonatal Mortality Rates²
 South Carolina and Each County, 2017, 2015-2017, 2012-2014
 (Residence Data)

County of Residence	2017		2015-2017		2012-2014	
	Number	Rate	Number	Rate	Number	Rate
South Carolina	75	2.0	232	2.0	209	1.9
Abbeville	-	0	-	0	2	3.9
Aiken	6	4.8	8	2.1	8	2.2
Allendale	-	0	-	0	-	0
Anderson	5	2.8	14	2.6	14	2.6
Bamberg	-	0	-	0	-	0
Barnwell	2	15.6	5	13.4	1	2.4
Beaufort	1	0.7	4	0.9	6	1.3
Berkeley	6	3.0	11	1.8	13	2.3
Calhoun	-	0	-	0	-	0
Charleston	2	0.6	13	1.3	7	0.7
Cherokee	1	2.0	3	2.0	4	2.7
Chester	-	0	4	6.6	2	3.1
Chesterfield	-	0	1	1.1	2	2.2
Clarendon	2	12.9	3	6.8	4	8.8
Colleton	-	0	3	3.9	2	2.8
Darlington	1	2.7	5	4.2	4	3.3
Dillon	-	0	1	1.9	-	0
Dorchester	2	1.5	11	2.9	5	1.3
Edgefield	-	0	1	3.2	2	5.9
Fairfield	-	0	1	4.4	-	0
Florence	-	0	8	3.4	7	2.8
Georgetown	1	3.5	2	2.1	2	2.1
Greenville	6	1.2	26	1.8	21	1.5
Greenwood	-	0	1	0.6	1	0.6
Hampton	-	0	-	0	1	3.6
Horry	2	0.8	15	2.0	14	1.9
Jasper	3	13.4	3	5.0	-	0
Kershaw	1	2.0	2	1.2	4	2.6
Lancaster	-	0	2	0.9	3	1.5
Laurens	1	1.8	3	1.8	5	3.2
Lee	1	22.7	1	7.9	-	0
Lexington	8	3.2	23	3.0	9	1.2
McCormick	-	0	-	0	-	0
Marion	-	0	-	0	1	2.8
Marlboro	-	0	2	5.1	2	5.7
Newberry	1	3.9	2	2.5	1	1.3
Oconee	3	4.5	5	2.4	3	1.4
Orangeburg	-	0	-	0	4	4.3
Pickens	4	3.8	5	1.5	10	3.0
Richland	3	1.5	12	1.9	9	1.5
Saluda	-	0	-	0	1	1.8
Spartanburg	8	2.8	23	2.8	16	2.0
Sumter	-	0	-	0	3	1.4
Union	-	0	-	0	2	3.3
Williamsburg	-	0	-	0	1	3.0
York	5	2.4	9	1.4	13	2.0

¹Race of mother

²Rates per 1,000 live births. Rates calculated with 20 or fewer deaths are unreliable and should be used cautiously.

Table 7-B.

Black and Other¹ Postneonatal Mortality and Postneonatal Mortality Rates²
 South Carolina and Each County, 2017, 2015-2017, 2012-2014
 (Residence Data)

County of Residence	2017		2015-2017		2012-2014	
	Number	Rate	Number	Rate	Number	Rate
South Carolina	57	2.9	188	3.2	208	3.5
Abbeville	-	0	2	9.4	1	4.1
Aiken	4	6.5	9	4.7	4	2.2
Allendale	-	0	-	0	-	0
Anderson	1	2.0	6	4.2	8	5.5
Bamberg	-	0	-	0	-	0
Barnwell	1	8.8	1	2.8	4	8.2
Beaufort	1	1.9	4	2.6	-	0
Berkeley	1	1.4	4	1.8	10	4.6
Calhoun	-	0	1	5.2	-	0
Charleston	6	4.0	19	4.0	13	2.6
Cherokee	-	0	-	0	2	3.6
Chester	-	0	-	0	2	3.6
Chesterfield	1	4.6	4	6.6	1	1.6
Clarendon	1	6.0	3	5.8	3	4.9
Colleton	-	0	3	5.0	3	4.8
Darlington	1	2.7	9	7.6	6	5.1
Dillon	1	4.3	4	5.6	3	3.9
Dorchester	3	5.3	5	3.0	1	0.6
Edgefield	-	0	-	0	1	3.2
Fairfield	1	7.0	2	4.8	1	2.4
Florence	4	4.1	10	3.7	16	5.8
Georgetown	1	4.2	1	1.4	2	2.5
Greenville	7	4.5	15	3.3	14	3.2
Greenwood	3	9.1	7	7.6	3	2.8
Hampton	-	0	2	5.2	3	7.5
Horry	2	2.7	7	3.4	10	5.2
Jasper	-	0	-	0	-	0
Kershaw	-	0	3	4.6	1	1.7
Lancaster	1	3.6	1	1.2	4	4.9
Laurens	-	0	3	4.5	1	1.5
Lee	-	0	-	0	2	5.1
Lexington	1	1.4	4	2.0	8	4.0
McCormick	-	0	-	0	2	17.2
Marion	1	4.4	4	5.4	3	3.7
Marlboro	-	0	1	1.9	1	1.8
Newberry	2	14.4	3	6.0	1	1.9
Oconee	-	0	1	4.7	-	0
Orangeburg	-	0	1	0.5	11	4.9
Pickens	-	0	-	0	-	0
Richland	7	2.6	28	3.4	38	4.6
Saluda	-	0	-	0	1	5.0
Spartanburg	2	2.0	4	1.4	6	2.1
Sumter	1	1.3	7	3.0	9	3.8
Union	-	0	1	3.1	-	0
Williamsburg	-	0	2	2.7	3	4.5
York	3	3.4	7	2.8	6	2.5

¹Race of mother²Rates per 1,000 live births. Rates calculated with 20 or fewer deaths are unreliable and should be used cautiously.

Table 8.
Leading Causes of Infant Death by Age at Death
South Carolina, 2017
(Residence Data)

Cause of Infant Death (ICD-10 Codes)	Total	Under 1 Day	1-6 Days	7-27 Days	Neonatal (<28 days)	Post-Neonatal (28-364 days)
Total Infant Deaths	371	143	50	46	239	132
Congenital malformations, deformations, etc. (Q00-Q99)	64	30	12	6	48	16
Disorders related to short gestation and low birthweight, NEC (P07)	52	46	3	1	50	2
Fetus and newborn affected by maternal complications of pregnancy (P01)	34	31	2	-	33	1
Accidents (V01-X59, Y85-Y86)	34	-	-	5	5	29
Sudden infant death syndrome (R95)	28	-	-	5	5	23
Newborn affected by complication of placenta, etc. (P02)	13	12	1	-	13	-
Diseases of circulatory system (I00-I99)	11	1	-	-	1	10
Intrauterine hypoxia and birth asphyxia (P20-P21)	8	1	5	2	8	-
Respiratory distress of newborn (P22)	8	1	4	2	7	1
Bacterial sepsis of newborn (P36)	8	1	2	4	7	1
All other causes	111	20	21	21	62	49

Source: SC DHEC, Vital Statistics

Table 8-A.
Leading Causes of White¹ Infant Death by Age at Death
South Carolina, 2017
(Residence Data)

Cause of Infant Death (ICD-10 Codes)	Total	Under 1 Day	1-6 Days	7-27 Days	Neonatal (<28 days)	Post-Neonatal (28-364 days)
Total White Infant Deaths	182	63	31	20	114	68
Congenital malformations, deformations, etc. (Q00-Q99)	37	21	5	4	30	7
Disorders related to short gestation and low birthweight, NEC (P07)	22	17	3	1	21	1
Accidents (V01-X59, Y85-Y86)	20	-	-	2	2	18
Sudden infant death syndrome (R95)	13	-	-	2	2	11
Fetus and newborn affected by maternal complications of pregnancy (P01)	11	9	1	-	10	1
Newborn affected by complication of placenta, etc. (P02)	7	6	1	-	7	-
Intrauterine hypoxia and birth asphyxia (P20-P21)	7	1	4	2	7	-
Diseases of circulatory system (I00-I99)	6	1	-	-	1	5
Neonatal hemorrhage (P50-P52, P54)	6	1	3	2	6	-
Assault (homicide) (X85-Y09, Y87.1)	5	1	-	-	1	4
All other causes	48	6	14	7	27	21

¹ Race of child

Table 8-B.
Leading Causes of Black and Other¹ Infant Death by Age at Death
South Carolina, 2017
(Residence Data)

Cause of Infant Death (ICD-10 Codes)	Total	Under 1 Day	1-6 Days	7-27 Days	Neonatal (<28 days)	Post-Neonatal (28-364 days)
Total Black and Other Infant Deaths	188	80	19	25	124	64
Disorders related to short gestation and low birthweight, NEC (P07)	30	29	-	-	29	1
Congenital malformations, deformations, etc. (Q00-Q99)	27	9	7	2	18	9
Fetus and newborn affected by maternal complications of pregnancy (P01)	23	22	1	-	23	-
Sudden infant death syndrome (R95)	15	-	-	3	3	12
Accidents (V01-X59, Y85-Y86)	14	-	-	3	3	11
Bacterial sepsis of newborn (P36)	7	-	2	4	6	1
Newborn affected by complication of placenta, etc. (P02)	6	6	-	-	6	-
Diseases of circulatory system (I00-I99)	5	-	-	-	-	5
Influenza and pneumonia (J10-J18)	5	-	-	-	-	5
Respiratory distress of newborn (P22)	5	1	2	2	5	-
All other causes	51	13	7	11	31	20

¹ Race of child

Table 8-C.
 Percent Change of Leading Causes of Infant Death
 from 2016 to 2017, South Carolina

Cause of Infant Death Ranked by 2017 Data (ICD-10 Codes)	2016	2017	% Change
Total Infant Deaths	401	371	-7.5%
Congenital malformations, deformations, etc. (Q00-Q99)	85	64	-24.7%
Disorders related to short gestation and low birthweight, NEC (P07)	57	52	-8.8%
Fetus and newborn affected by maternal complications of pregnancy (P01)	20	34	70.0%
Accidents (V01-X59, Y85-Y86)	39	34	-12.8%
Sudden infant death syndrome (R95)	27	28	3.7%
Newborn affected by complication of placenta, etc. (P02)	14	13	-7.1%
Diseases of circulatory system (I00-I99)	9	11	22.2%
Intrauterine hypoxia and birth asphyxia (P20-P21)	6	8	33.3%
Respiratory distress of newborn (P22)	13	8	-38.5%
Bacterial sepsis of newborn (P36)	16	8	-50.0%
All other causes	113	111	-1.8%

Table 9.
Breakdown of Infant Deaths due to Accidents
South Carolina, 2011-2017

	2011	2012	2013	2014	2015	2016	2017	Total (2011-2017)
Accidental suffocation and strangulation in bed (W75, W84)	21	39	21	31	35	33	30	210
Other accidental threats to breathing	2	0	2	3	1	3	1	12
Transportation	3	1	0	3	0	2	1	10
Drowning	1	0	0	1	0	0	0	2
Poison	1	0	0	1	0	0	0	2
Other accidents	2	1	0	1	2	1	2	9
Total	30	41	23	40	38	39	34	245

Table 10.
Breakdown of Sudden Unexplained Infant Deaths
South Carolina, 2011-2017
(Residence Data)

	2011	2012	2013	2014	2015	2016	2017	Total (2011-2017)
Accidental suffocation and strangulation in bed (W75, W84)	21	39	21	31	35	33	30	210
Sudden Infant Death Syndrome (R95)	45	33	35	31	28	27	28	227
Hanging, strangulation, and suffocation, undetermined intent (Y20)	2	1	9	4	4	1	2	23
Other ill-defined and unspecified causes of mortality (R99)	10	12	6	11	11	10	10	70
Total	78	85	71	77	78	71	70	530

Table 11.
Leading Causes of Infant Death and Mortality Rates¹
South Carolina, 2015-2017
(Residence Data)

Table 11. South Carolina Infant Death, Resident Data, 2015-2017, All races

Rank	Cause of death	Number	Rate
Total Infant Deaths.....	1,177	6.8
1	Congenital malformations, deformations, etc. (Q00-Q99).....	221	1.3
2	Disorders related to short gestation and low birthweight (P07).....	188	1.1
3	Accidents (V01-X59,Y85-Y86).....	111	0.6
4	Sudden infant death syndrome (R95).....	83	0.5
5	Fetus and newborn affected by maternal complications of pregnancy (P01)...	78	0.5
6	Newborn affected by complications of placenta, etc. (P02).....	40	0.2
7	Disease of circulatory system (I00-I99).....	29	0.2
8	Respiratory distress of newborn (P22).....	29	0.2
9	Bacterial sepsis of newborn (P36).....	28	0.2
10	Atelectasis (P28.0-P28.1)	21	0.1
10	Assault (Homicide) (X85-Y09, Y87.1)	21	0.1
All Other Causes.....	328	0.1

Table 11-A. South Carolina Infant Death, Resident Data, 2015-2017, White

Rank	Cause of death	Number	Rate
All White Infant Deaths.....	567	5.0
1	Congenital malformations, deformations, etc. (Q00-Q99).....	135	1.2
2	Disorders related to short gestation and low birthweight (P07).....	63	0.6
3	Accidents (V01-X59,Y85-Y86).....	62	0.5
4	Sudden infant death syndrome (R95).....	41	0.4
5	Fetus and newborn affected by maternal complications of pregnancy (P01)...	29	0.3
6	Newborn affected by complications of placenta, etc. (P02).....	22	0.2
7	Disease of circulatory system (I00-I99).....	16	0.1
8	Assault (homicide) (X85-Y09,Y87.1).....	16	0.1
9	Neonatal hemorrhage (P50-P52,P54).....	14	0.1
10	Intrauterine hypoxia and birth asphyxia (P20-P21)	11	0.1
10	Respiratory distress of newborn (P22).....	11	0.1
All Other Causes.....	147	1.3

Table 11-B. South Carolina Infant Death, Resident Data, 2015-2017, Black and Other

Rank	Cause of death	Number	Rate
All Black And Other Infant Deaths.....	608	10.5
1	Disorders related to short gestation and low birthweight (P07).....	125	2.2
2	Congenital malformations, deformations, etc. (Q00-Q99).....	86	1.5
3	Accidents (V01-X59, Y85-Y86).....	49	0.8
4	Fetus and newborn affected by maternal complications of pregnancy (P01)...	48	0.8
5	Sudden infant death syndrome (R95).....	42	0.7
6	Bacterial sepsis of newborn (P36).....	21	0.4
7	Newborn affected by complications of placenta, etc. (P02).....	18	0.3
8	Respiratory distress of newborn (P22).....	18	0.3
9	Atelectasis (P28.0-P28.1)	14	0.2
10	Disease of circulatory system (I00-I99).....	13	0.2
All Other Causes.....	174	3.0

¹Rates per 1,000 live births. Rates calculated with 20 or fewer deaths are unreliable and should be used cautiously.

Table 12.

Comparison of Characteristics for All Live Births, by Race¹
 Z-tests for differences in proportions³
 South Carolina, 2016 to 2017
 (Residence Data)

	2016		2017		Z-TEST	P-VALUE
	Percent	Number	Percent	Number		

MOTHER < 18 YEARS						
TOTAL ²	1.71	981	1.58	902	-1.7183	0.0857
White	1.41	538	1.30	487	-1.3222	0.1861
Black & Other	2.33	443	2.14	415	-1.2445	0.2133

MARITAL STATUS: UNMARRIED						
TOTAL ²	45.14	25,884	45.97	26,219	2.8195	0.0048
White	32.17	12,309	32.87	12,361	2.0740	0.0381
Black & Other	71.26	13,558	71.42	13,845	0.3404	0.7336

OBESE PRIOR TO PREGNANCY						
TOTAL ²	30.19	17,310	31.26	17,830	3.9374	0.0001
White	25.21	9,647	26.21	9,856	3.1524	0.0016
Black & Other	40.23	7,653	41.09	7,966	1.7307	0.0835

TOBACCO USE DURING PREGNANCY						
TOTAL ²	9.11	5,223	8.40	4,791	-4.2382	0.0000
White	10.71	4,099	9.90	3,721	-3.6976	0.0002
Black & Other	5.88	1,119	5.51	1,068	-1.5744	0.1154

HISPANIC MOTHER						
TOTAL ²	8.74	5,013	8.95	5,102	1.2096	0.2264
White	12.20	4,670	12.54	4,715	1.4007	0.1613
Black & Other	1.80	343	2.00	387	1.3886	0.1650

VERY LOW BIRTHWEIGHT						
TOTAL ²	1.81	1,037	1.79	1,020	-0.2554	0.7984
White	1.19	457	1.11	418	-1.0661	0.2864
Black & Other	3.03	577	3.10	600	0.3543	0.7231

LOW BIRTHWEIGHT						
TOTAL ²	9.59	5,497	9.68	5,521	0.5369	0.5913
White	7.34	2,810	7.16	2,694	-0.9504	0.3419
Black & Other	14.10	2,682	14.57	2,824	1.3163	0.1881

¹Race of mother

²Includes unknown race

³Proportions are expressed as percentages

Table 12. (continued)

Comparison of Characteristics for All Live Births, by Race¹
 Z-tests for differences in proportions³
 South Carolina, 2016 to 2017
 (Residence Data)

	2016		2017		Z-TEST	P-VALUE
	Percent	Number	Percent	Number		
PREMATURE BIRTHS (< 37 WEEKS)						
TOTAL ²	11.15	6,391	11.21	6,395	0.3596	0.7191
White	9.53	3,648	9.57	3,599	0.1770	0.8595
Black & Other	14.38	2,736	14.40	2,791	0.0465	0.9629
VERY PREMATURE BIRTHS (< 32 WEEKS)						
TOTAL ²	1.98	1,136	1.92	1,093	-0.7918	0.4285
White	1.37	523	1.26	473	-1.3172	0.1878
Black & Other	3.21	610	3.19	618	-0.1018	0.9189
PREMATURE 32-36 WEEKS BIRTHS						
TOTAL ²	9.17	5,255	9.30	5,302	0.7696	0.4415
White	8.17	3,125	8.31	3,126	0.7345	0.4626
Black & Other	11.17	2,126	11.21	2,173	0.1086	0.9136
KOTELCHUCK INDEX: ADEQUATE, ADEQUATE PLUS						
TOTAL ²	75.36	43,212	76.52	43,638	4.5597	0.0000
White	77.67	29,718	78.62	29,561	3.1716	0.0015
Black & Other	70.82	13,474	72.49	14,052	3.6236	0.0003
KOTELCHUCK INDEX: INADEQUATE						
TOTAL ²	18.69	10,718	17.66	10,074	-4.5096	0.0000
White	16.63	6,362	15.67	5,893	-3.5703	0.0004
Black & Other	22.79	4,336	21.51	4,169	-3.0320	0.0024
< 5 PRENATAL CARE VISITS						
TOTAL ²	5.73	3,286	5.57	3,178	-1.1608	0.2457
White	4.89	1,871	4.68	1,759	-1.3655	0.1721
Black & Other	7.38	1,404	7.29	1,413	-0.3406	0.7334
PRENATAL CARE BEGAN FIRST TRIMESTER						
TOTAL ²	70.70	40,535	71.44	40,740	2.7595	0.0058
White	73.30	28,049	74.14	27,877	2.6127	0.0090
Black & Other	65.53	12,468	66.24	12,841	1.4616	0.1439

¹Race of mother²Includes unknown race³Proportions are expressed as percentages

Table 12-A.

Comparison of Characteristics of Infants who Died, by Race¹
 Z-tests for differences in proportions³
 South Carolina, 2016 to 2017
 (Residence Data)

	2016		2017		Z-TEST	P-VALUE
	Percent	Number	Percent	Number		
MOTHER < 18 YEARS						
TOTAL ²	2.24	9	2.16	8	-0.0833	0.9336
White	2.38	5	1.53	3	-0.6160	0.5379
Black & Other	2.09	4	2.87	5	0.4795	0.6316
MARITAL STATUS: UNMARRIED						
TOTAL ²	60.85	244	59.84	222	-0.2865	0.7745
White	45.71	96	47.96	94	0.4530	0.6506
Black & Other	77.49	148	73.56	128	-0.8719	0.3832
OBESE PRIOR TO PREGNANCY						
TOTAL ²	34.91	140	36.93	137	0.5830	0.5599
White	29.05	61	29.59	58	0.1204	0.9042
Black & Other	41.36	79	45.40	79	0.7782	0.4364
TOBACCO USE DURING PREGNANCY						
TOTAL ²	13.72	55	14.29	53	0.2281	0.8196
White	19.05	40	18.88	37	-0.0437	0.9652
Black & Other	7.85	15	9.20	16	0.4593	0.6460
HISPANIC MOTHER						
TOTAL ²	6.73	27	8.89	33	1.1209	0.2623
White	10.95	23	14.80	29	1.1581	0.2468
Black & Other	2.09	4	2.30	4	0.1333	0.8939
VERY LOW BIRTHWEIGHT						
TOTAL ²	50.62	203	50.40	187	-0.0608	0.9515
White	42.38	89	40.82	80	-0.3196	0.7493
Black & Other	59.69	114	61.49	107	0.3531	0.7240
LOW BIRTHWEIGHT						
TOTAL ²	66.08	265	65.77	244	-0.0927	0.9261
White	59.05	124	58.16	114	-0.1808	0.8565
Black & Other	73.82	141	74.71	130	0.1944	0.8459

¹Race of mother

²Includes unknown race

³Proportions are expressed as percentages

Table 12-A. (continued)

Comparison of Characteristics of Infants who Died, by Race¹
 Z-tests for differences in proportions³
 South Carolina, 2016 to 2017
 (Residence Data)

	2016		2017		Z-TEST	P-VALUE
	Percent	Number	Percent	Number		

PREMATURE BIRTHS (< 37 WEEKS)						
TOTAL ²	67.58	271	65.23	242	-0.6915	0.4893
White	58.10	122	57.14	112	-0.1941	0.8461
Black & Other	78.01	149	74.71	130	-0.7415	0.4584

VERY PREMATURE BIRTHS (< 32 WEEKS)						
TOTAL ²	50.87	204	51.21	190	0.0945	0.9248
White	40.95	86	40.31	79	-0.1325	0.8946
Black & Other	61.78	118	63.79	111	0.3973	0.6912

PREMATURE 32-36 WEEKS BIRTHS						
TOTAL ²	16.71	67	14.02	52	-1.0350	0.3007
White	17.14	36	16.84	33	-0.0821	0.9346
Black & Other	16.23	31	10.92	19	-1.4739	0.1405

KOTELCHUCK INDEX: ADEQUATE, ADEQUATE PLUS						
TOTAL ²	63.34	254	65.23	242	0.5467	0.5846
White	63.81	134	67.86	133	0.8589	0.3904
Black & Other	62.83	120	62.64	109	-0.0362	0.9711

KOTELCHUCK INDEX: INADEQUATE						
TOTAL ²	30.92	124	26.68	99	-1.2981	0.1943
White	29.05	61	26.53	52	-0.5655	0.5718
Black & Other	32.98	63	27.01	47	-1.2421	0.2142

< 5 PRENATAL CARE VISITS						
TOTAL ²	33.17	133	29.65	110	-1.0514	0.2931
White	29.05	61	26.53	52	-0.5655	0.5718
Black & Other	37.70	72	33.33	58	-0.8694	0.3846

PRENATAL CARE BEGAN FIRST TRIMESTER						
TOTAL ²	55.86	224	61.99	230	1.7302	0.0836
White	55.71	117	62.76	123	1.4420	0.1493
Black & Other	56.02	107	61.49	107	1.0605	0.2889

¹Race of mother

²Includes unknown race

³Proportions are expressed as percentages

Table 13.
Multiple Births Trends
South Carolina, 2013-2017
(Residence Data)

Year	Singleton Births	Singleton Deaths	Infant Mortality Rate ¹	Twin Births	Twin Deaths	Infant Mortality Rate ¹	Higher Order (3+) Births	Higher Order (3+) Deaths	Infant Mortality Rate ¹	Total Births ²	Total Deaths ²	Infant Mortality Rate ¹
2013	54,668	326	6.0	2,003	55	27.5	72	6	83.3	56,743	389	6.9
2014	55,548	324	5.8	2,030	44	21.7	53	4	75.5	57,631	372	6.5
2015	56,006	352	6.3	2,085	48	23.0	44	5	113.6	58,135	405	7.0
2016	55,197	344	6.2	2,063	51	24.7	77	6	77.9	57,337	401	7.0
2017	55,028	319	5.8	1,950	42	21.5	52	4	76.9	57,030	371	6.5
Total	276,447	1,665	6.0	10,131	240	23.7	298	25	83.9	286,876	1,938	6.8

¹Rates are per 1,000 births. Rates calculated with 20 or fewer deaths are unreliable and should be used cautiously

²Includes unknown plurality

Table 14.
Infant Mortality Rates¹ by Race² and Birthweight³ Group
South Carolina
2015, 2016, and 2017
(Residence Data)

Infant Mortality for Very Low Birthweight (0-1499 grams)									
	Total			White			Black & Other		
Year	Number of Live Births	Number of Infant Deaths	Rate	Number of Live Births	Number of Infant Deaths	Rate	Number of Live Births	Number of Infant Deaths	Rate
2015	1,046*	213	203.6	444	81	182.4	596	131	219.8
2016	1,037*	203	195.8	457	89	194.7	577	114	197.6
2017	1,020*	187	183.3	418	80	191.4	600	107	178.3

Infant Mortality for Intermediate Low Birthweight (1500-2499 grams)									
	Total			White			Black & Other		
Year	Number of Live Births	Number of Infant Deaths	Rate	Number of Live Births	Number of Infant Deaths	Rate	Number of Live Births	Number of Infant Deaths	Rate
2015	4,503*	77	17.1	2,317	45	19.4	2,178	32	14.7
2016	4,460*	61	13.7	2,353	35	14.9	2,105	27	12.8
2017	4,501*	57	12.7	2,276	34	14.9	2,224	23	10.3

Infant Mortality for Normal Birthweight (2500+ grams)									
	Total			White			Black & Other		
Year	Number of Live Births	Number of Infant Deaths	Rate	Number of Live Births	Number of Infant Deaths	Rate	Number of Live Births	Number of Infant Deaths	Rate
2015	52,571*	111	2.1	35,689	57	1.6	16,835	54	3.2
2016	51,834*	132	2.5	35,450	82	2.3	16,343	50	3.1
2017	51,503*	121	2.3	34,903	81	2.3	16,561	40	2.4

¹Rates per 1,000 live births

²Race of mother

³Does not include missing birthweight

*Includes unknown race

Table 14-A.
 Neonatal Mortality Rates¹ by Race² and Birthweight³ Group
 South Carolina
 2015, 2016, and 2017
 (Residence Data)

Neonatal Mortality for Very Low Birthweight (0-1499 grams)									
	Total			White			Black & Other		
Year	Number of Live Births	Number of Infant Deaths	Rate	Number of Live Births	Number of Infant Deaths	Rate	Number of Live Births	Number of Infant Deaths	Rate
2015	1,046*	184	175.9	444	70	157.7	596	113	189.6
2016	1,037*	176	169.7	457	71	155.4	577	105	182.0
2017	1,020*	158	154.9	418	67	160.3	600	91	151.7

Neonatal Mortality for Intermediate Low Birthweight (1500-2499 grams)									
	Total			White			Black & Other		
Year	Number of Live Births	Number of Infant Deaths	Rate	Number of Live Births	Number of Infant Deaths	Rate	Number of Live Births	Number of Infant Deaths	Rate
2015	4,503*	48	10.7	2,317	34	14.7	2,178	14	6.4
2016	4,460*	29	6.5	2,353	16	6.8	2,105	13	6.2
2017	4,501*	33	7.3	2,276	24	10.5	2,224	9	4.0

Neonatal Mortality for Normal Birthweight (2500+ grams)									
	Total			White			Black & Other		
Year	Number of Live Births	Number of Infant Deaths	Rate	Number of Live Births	Number of Infant Deaths	Rate	Number of Live Births	Number of Infant Deaths	Rate
2015	52,571*	31	0.6	35,689	16	0.4	16,835	15	0.9
2016	51,834*	46	0.9	35,450	28	0.8	16,343	18	1.1
2017	51,503*	46	0.9	34,903	30	0.9	16,561	16	1.0

¹Rates per 1,000 live births

²Race of mother

³Does not include missing birthweight

*Includes unknown race

Table 14-B.
 Postneonatal Mortality Rates¹ by Race² and Birthweight³ Group
 South Carolina
 2015, 2016, and 2017
 (Residence Data)

Postneonatal Mortality for Very Low Birthweight (0-1499 grams)									
	Total			White			Black & Other		
Year	Number of Live Births	Number of Infant Deaths	Rate	Number of Live Births	Number of Infant Deaths	Rate	Number of Live Births	Number of Infant Deaths	Rate
2015	1,046*	29	28.3	444	11	24.8	596	18	30.2
2016	1,037*	27	26.0	457	18	37.7	577	9	15.6
2017	1020*	29	28.4	418	13	31.1	600	16	26.7

Postneonatal Mortality for Intermediate Low Birthweight (1500-2499 grams)									
	Total			White			Black & Other		
Year	Number of Live Births	Number of Infant Deaths	Rate	Number of Live Births	Number of Infant Deaths	Rate	Number of Live Births	Number of Infant Deaths	Rate
2015	4,503*	29	6.4	2,317	11	4.7	2,178	18	8.3
2016	4,460*	33	7.4	2,353	19	8.1	2,105	14	6.7
2017	4,501*	24	5.3	2,276	10	4.4	2,224	14	6.3

Postneonatal Mortality for Normal Birthweight (2500+ grams)									
	Total			White			Black & Other		
Year	Number of Live Births	Number of Infant Deaths	Rate	Number of Live Births	Number of Infant Deaths	Rate	Number of Live Births	Number of Infant Deaths	Rate
2015	52,571*	80	1.5	35,689	41	1.1	16,835	39	2.3
2016	51,834*	86	1.7	35,450	54	1.5	16,343	32	2.0
2017	51,503*	75	1.5	34,903	51	1.5	16,561	24	1.4

¹Rates per 1,000 live births

²Race of mother

³Does not include missing birthweight

*Includes unknown race

Figure 1.
Percentage of Infant Deaths by Birthweight Group
South Carolina, 2015-2017 Residence Data

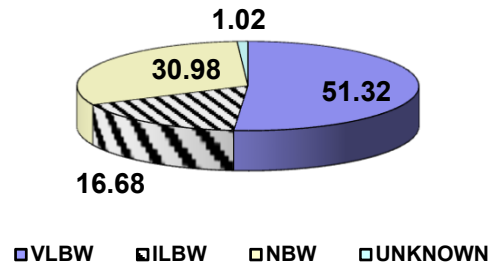


Figure 1-A.
Percentage of White Infant Deaths by Birthweight Group
South Carolina, 2015-2017 Residence Data

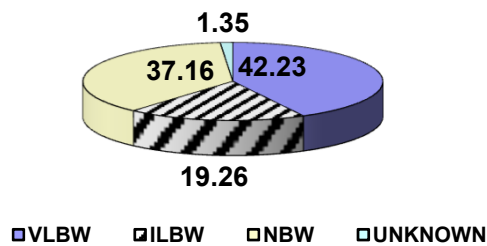


Figure 1-B.
Percentage of Black and Other Infant Deaths by Birthweight Group
South Carolina, 2015-2017
Residence Data

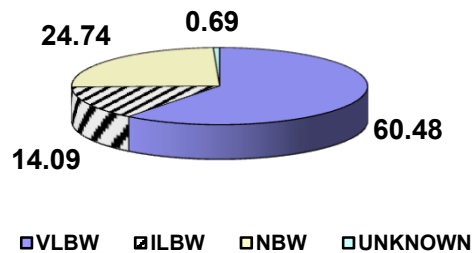
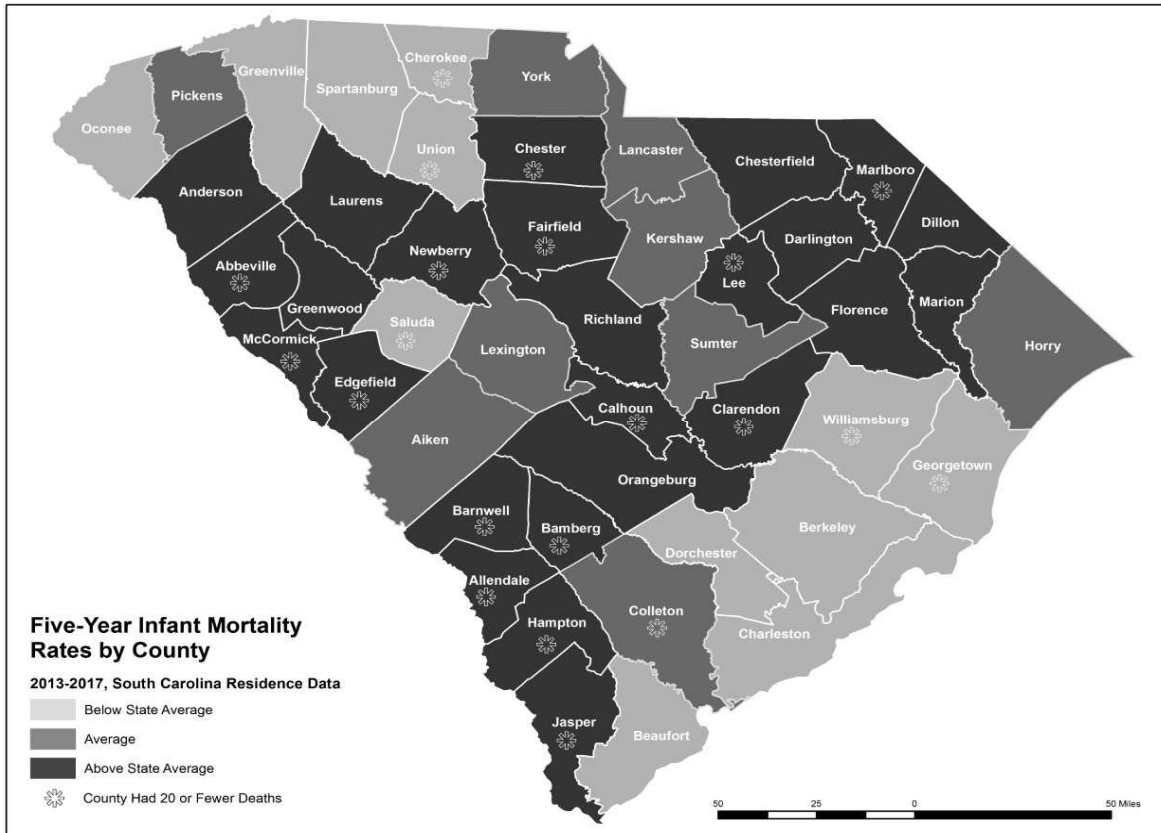


Figure 2.
Five Year Infant Mortality Rates¹ by County
South Carolina
2013-2017
(Residence Data)



Above State Average indicates a rate greater than 7.2.
State Average indicates a rate between 5.8 and 7.2 inclusive.
Below State Average indicates a rate lower than 5.8.

¹Rate per 1,000 live births. Rates calculated with 20 or fewer deaths are unreliable and should be used cautiously.