

# SCSL Digital Collections

## Flu watch (MMWR week 30)

Item Type	Text
Publisher	South Carolina State Library
Rights	Copyright status undetermined. For more information contact, South Carolina State Library, 1500 Senate Street, Columbia, South Carolina 29201.
Download date	2024-10-06 04:14:50
Link to Item	<a href="http://hdl.handle.net/10827/30496">http://hdl.handle.net/10827/30496</a>



# Flu Watch

MMWR Week 30  
July 29-August 4, 2012

Summer Edition

South Carolina Department of Health and Environmental Control  
Division of Acute Disease Epidemiology

*Summary.....1*

*ILINet.....2*

*Positive Confirmatory Tests.....3*

*Positive rapid tests.....4*

*Hospitalizations and deaths....4*

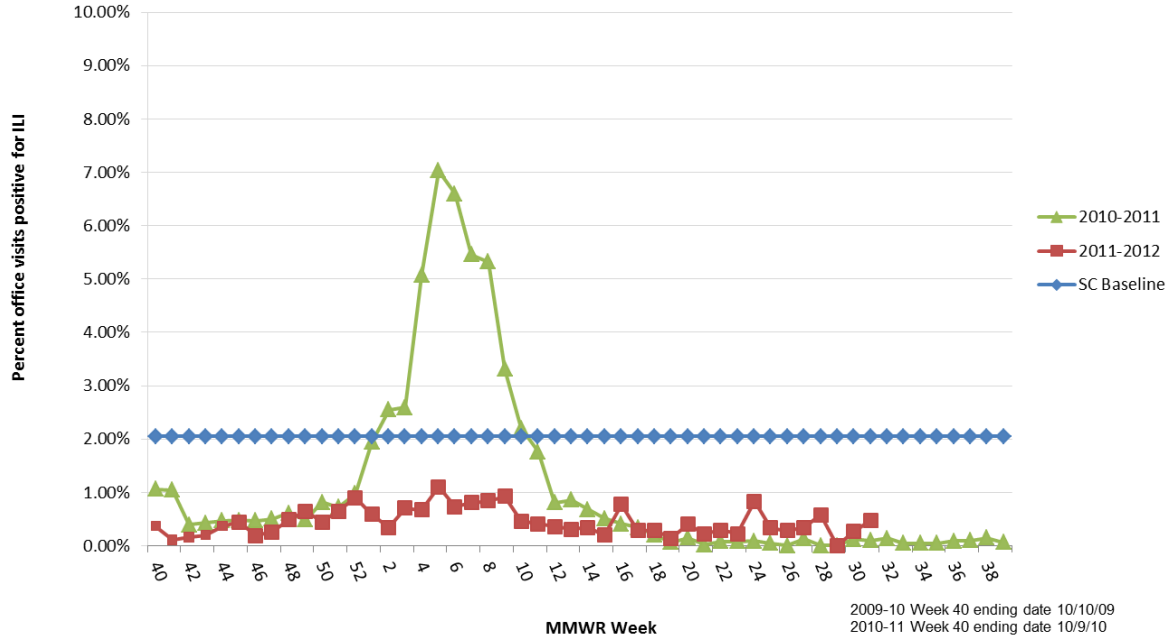
**Current influenza activity level: NO ACTIVITY**

All data are provisional and may change as new reports are received.

**ILI Activity, Positive Confirmatory Tests, Influenza Associated Hospitalizations and Deaths, and Positive Rapid Tests**

	<i>Previous week</i>	<i>Current week</i>	▲	Cumulative (10/2/11-8/4/12)
Visits for ILI to ILINet providers (%)	.27	.48	▲ .21	NA
Positive confirmatory tests	0	0	0	137
Lab confirmed flu hospitalizations	1	0	▼ 1	114
Lab confirmed flu deaths	0	0	0	1
Positive rapid tests	1	0	▼ 1	

**Percentage of Visits for Influenza-like Illness (ILI) Reported by Sentinel Providers in South Carolina  
2010-2011 and 2011-2012 Influenza Seasons**



**ILI Percentage by Geographic Region**

Geographic Region	ILI %	# of Reporters
Upstate-Regions 1 -2	0	4
Midlands-Regions 3-5	.35	4
Coastal-Regions 6-8	1.92	1



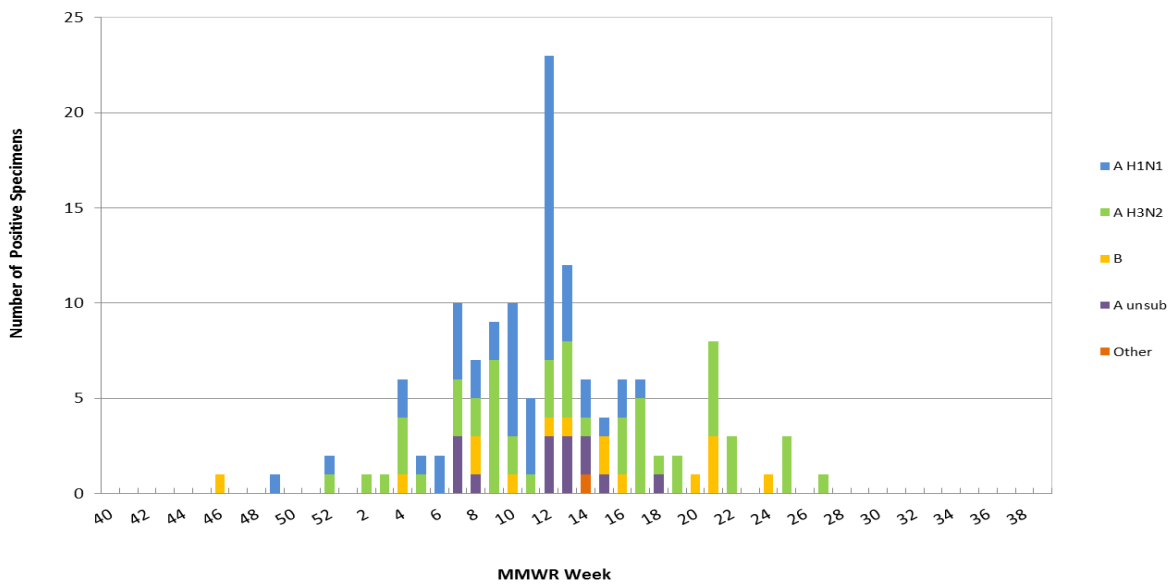
**Positive confirmatory influenza test results\*  
Cumulative (10/2/11–8/4/12)**

	BOL	Other clinical labs
Number of specimens tested	184	NA
Number of positive tests	99	38
Influenza A unsubtype		16
Influenza A H1N1	38	11
Influenza A H3N2	48	7
Influenza B	13	2
Other **		2

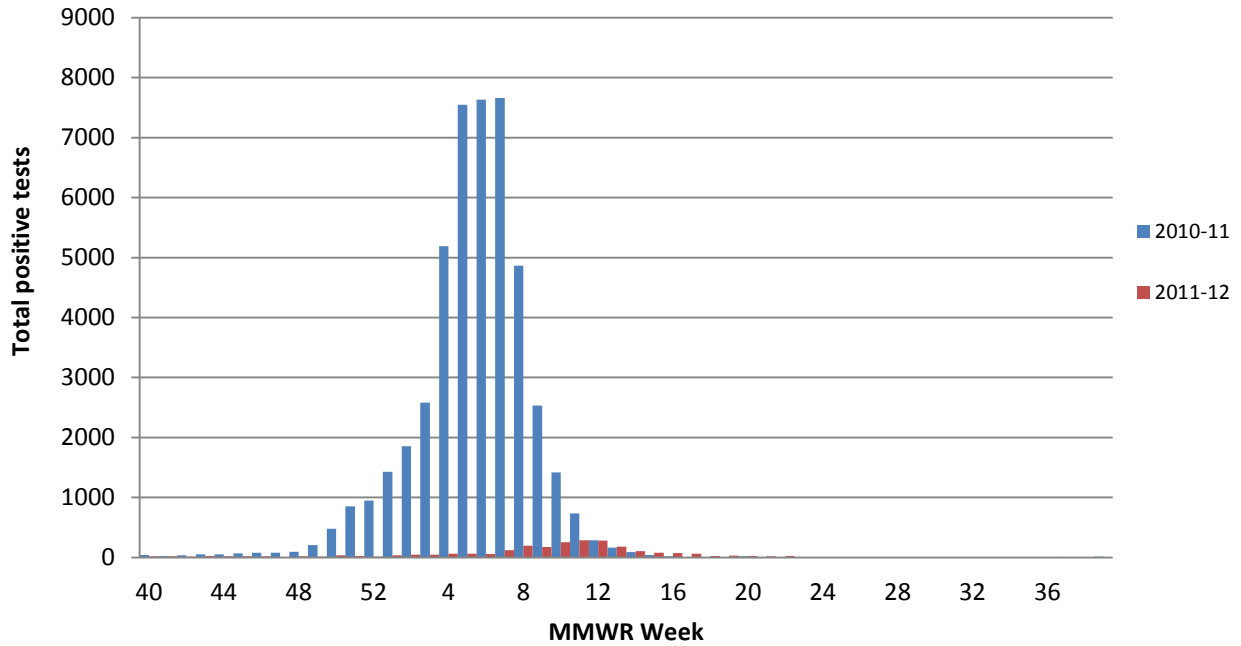
\*Includes culture, PCR, DFA, IFA

\*\*Includes one unknown and one influenza A & B coinfection

**Positive Confirmatory Test Results by MMWR Week  
2011-2012 Influenza Season (N=137)**



## Positive Rapid Tests by MMWR Week 2010-11 vs 2011-12



## Laboratory Confirmed Influenza Case rate/100,000 Hospitalizations (n=114) and Deaths (n=1) by age group October 2, 2011 - August 4, 2012

