

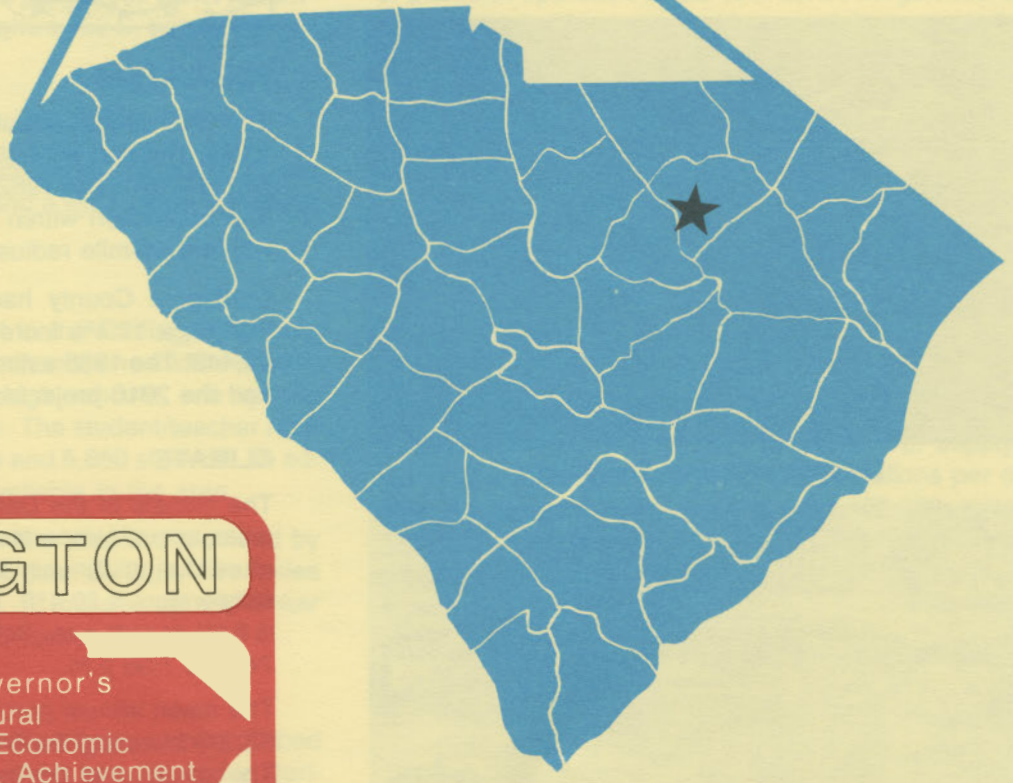
D 4925
2. D16
1985
Copy 1

DARLINGTON

south carolina



S. C. STATE LIBRARY
MAR 14 1986
STATE DOCUMENTS

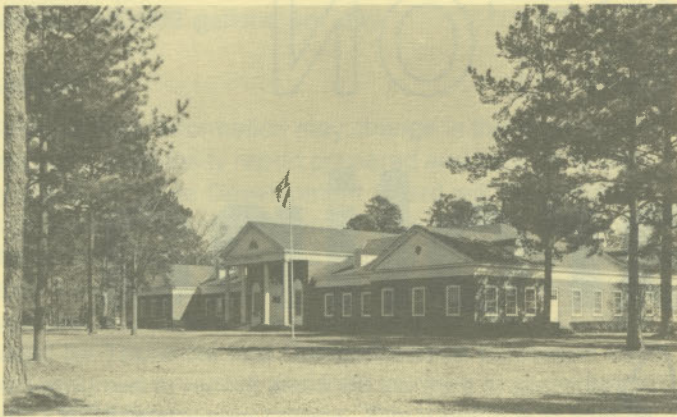


DARLINGTON

IS
A
GREAT
TOWN

Governor's
Rural
Economic
Achievement
Trophy

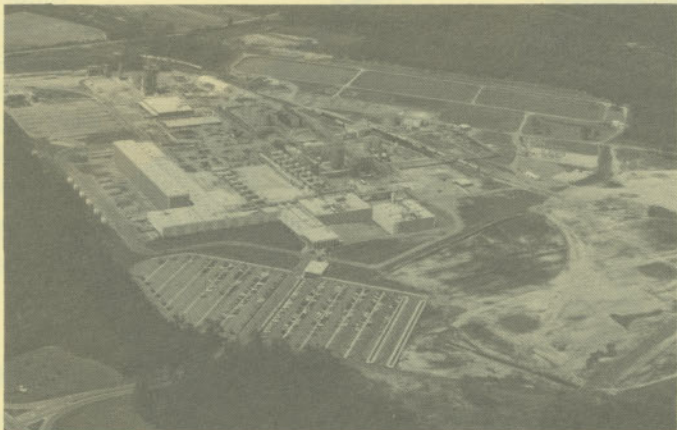
A red graphic of the state of South Carolina with a black star in the center, positioned to the right of the text 'GREAT TOWN'.



Stokes Hall, Francis Marion College



Florence-Darlington Technical College



Darlington County Courthouse



Our Heritage
1812-1983

LOCATION

As depicted on the cover, Darlington, seat of Darlington County, is in the northeastern section of the state. Charleston, South Carolina's busiest port, is 120 miles south. Columbia is 78 miles southwest and Greenville is 174 miles west. Darlington is 292 miles east of Atlanta; 637 miles south of New York; and 2,815 miles east of San Francisco.



POPULATION

The 1980 census population of the city of Darlington was 7,989. This was a 14.3% increase from the 1970 population of 6,990. The 1982 estimated population was 8,104. The population within a 15-mile radius is 111,242 and within a 30-mile radius is 265,452.

Darlington County had a 1980 census population of 62,717, a 17.4% increase from the 1970 population of 53,442. The 1985 estimated county population is 64,600 and the 2010 projected population is 68,000.

CLIMATE

The climate in the Darlington area is temperate with a mean annual temperature of 63.7°F. The average temperature during January is 46.4°F, while the average July temperature is 80.4°F. The average relative humidity daily is 84% at 1:00 a.m.; 84% at 7:00 a.m.; 57% at 1:00 p.m.; 74% at 7:00 p.m.

The mean annual precipitation in the Darlington area is 53.59 inches and the average growing season is 227 days. The elevation of Darlington is 152 feet above sea level.

COMMUNICATIONS

The weekly *News and Press* is published in the city, and the daily *Florence Morning News* is published in Florence, 10 miles away. Three other dailies circulate in the community. Radio stations WDAR-FM and WKGE-AM have

broadcast facilities in the city. Television reception is available from three stations, representing the three major networks and ETV. Cable television service is also available. Telephone service is provided by Southern Bell of BellSouth Corporation.

GOVERNMENT

The community has a mayor-council form of municipal government. The six city council members and the mayor are elected for four-year terms. Darlington County is governed locally by an administrator and a seven-member county council whose members are elected for four-year terms.

POLICE AND FIRE

The Darlington Police Department has 22 full-time police officers. The department operates nine radio equipped patrol cars. The Darlington Fire Department has seven full-time and 23 volunteer firemen who operate five pumper vehicles. Darlington's insurance rating is Class 6.

FINANCIAL INSTITUTIONS

Darlington has three banks and two savings and loan associations to serve the financial needs of the community. The banks have total assets of \$6.4 billion, while the savings and loans have assets of \$69.5 million.

HOTELS AND MOTELS

The community has two motels and one hotel with over 100 overnight accommodations. Numerous motel accommodations are available on Highway 52 S. between Darlington and Florence.

CHURCHES

Darlington has 31 Protestant churches. A Roman Catholic church is located in the city, and a synagogue is located in nearby Florence.

EDUCATION

Darlington, which is included in the Darlington County Schools, has five elementary schools; one middle school; one junior high school; two high schools; one special school; and one career center. The student/teacher ratio is 18.2 to 1, with 321 teachers and 5,850 students. In addition, private schooling is available in the area.

Higher education facilities for the area are provided by the Florence-Darlington Technical College, five miles away; Francis Marion College, 13 miles away; and Coker College in Hartsville, 14 miles away.

MEDICAL SERVICES

The 52-bed Humana Hospital Darlington and the 50-bed Wilson Clinic and Hospital, Inc. are both located in Darlington. The community has 15 privately-practicing medical doctors and eight privately-practicing dentists. Other medical services are available at nearby Florence.

RECREATION AND CIVIC FACILITIES

Recreation facilities in the community consist of one park,

a youth center and three playgrounds with outdoor cooking and game facilities. The city and county have organized recreation programs with full-time directors. The Darlington Country Club has an 18-hole golf course and swimming pool, and annually hosts the Southern 500 Golf Tournament. Seven other private courses are within 15 miles of the city. The Darlington International Raceway and a stock car racing museum are located in the community. Florence, 10 miles away, has museums, theaters and a little theater group.

POWER

Electric power is available to the community and surrounding areas from Carolina Power & Light Company (CP&L) and Pee Dee Electric Cooperative. CP&L has firm generation capacity of 8000 megawatts and forecasts sufficient reserves to accommodate industrial growth in its service area. Economical power from nuclear energy accounts for a major portion of CP&L's generation and serves to keep the company's rates below the national average. Usually CP&L will install, at no cost to the customer, the necessary equipment to supply the electrical requirements. Alternative rate schedules are available to the industrial customer with the most economical rate for a specific application determined by the characteristics of the user's consumption.

Electric power for Pee Dee Electric Cooperative is supplied by Central Electric Power Cooperative and South Carolina Public Service Authority. The generation capacity of plants in operation totals over 2,764 megawatts with approximately 73% produced from coal. Interconnections are maintained with all neighboring power suppliers. Sufficient reserves are available to meet immediate and future industrial power requirements. Economic Development Incentive Rates are available for qualifying industries.

FUELS

Natural gas is supplied by Carolina Pipeline Company and distributed by People's Natural Gas Company.

WATER

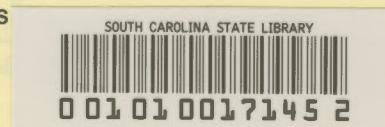
The community obtains its municipal water supply from three deep wells. The system is capable of supplying water at a maximum rate of 2,160,000 gallons per day, with an average daily demand of 1,100,000 gallons. Treated water storage consists of 700,000 gallons in elevated storage and 500,000 gallons in ground reservoirs.

Analysis of water supplied in the community:

Total solids	n/a
Alkalinity	30 mg/L
Calcium	.6 mg/L
Hardness	3 mg/L
Iron	.38 mg/L
pH	6.8

SEWER

Darlington presently utilizes a rapid infiltration wastewater treatment plant. The plant has a daily capacity for



1,600,000 gallons of wastewater. The plant presently handles 900,000 gallons per day.

LABOR

Because labor information may change in this area, a current labor availability report prepared and kept up to date by the S. C. State Development Board will be furnished to prospective manufacturers at their request. The comprehensive report will include sources of recruitable labor, labor force characteristics, work force skill levels, earnings data and other pertinent information. The S. C. State Board for Technical and Comprehensive Education has the resources to recruit and train workers in accordance with a company's entry criteria. This training is at little or no cost to the employer. A lead-time schedule is developed to coordinate recruiting, testing, selecting, and training. This assures that persons will be able to move from training to their respective jobs at the time the plant is ready for initial production.

TRANSPORTATION

Darlington is served by two interstate highways, I-95 and I-20 (both eight miles away), two United States highways, and three South Carolina highways. The community is served by Seaboard System Railroad. Darlington is served by 42 authorized motor carriers, 17 of which have terminal facilities in the Florence-Darlington area.

Freight Delivery Times:

To:	By Rail:	By Truck:
Atlanta	2 days	1 day
Baltimore	3 days	3 days
Chicago	4 days	3 days
Houston	6 days	3 days
New York	4 days	4 days
St. Louis	4 days	4 days
San Francisco	6 days	5 days

The Florence City-County Airport, 10 miles away, offers regularly scheduled commercial airline service on Atlan-

tis, Eastern, Henson-Piedmont and Trans Southern. The Darlington County Airport, eight miles away, has three 5,000-foot paved runways, one of which is lighted. The Darlington airport offers major airframe and major powerplant repairs, RBn and Abvortac. Other aviation services are available at Florence.

FOREIGN TRADE ZONE

A Foreign Trade Zone is located in Summerville, South Carolina, 25 miles from the Port of Charleston and 95 miles from the community. The Foreign Trade Zone allows manufacturers to store, manufacture or process goods without paying U.S. Customs duties or worrying about quota compliance. This Foreign Trade Zone is served by a multimode transportation network which provides excellent accessibility to market areas.

TAXES

The assessment on industrial property in South Carolina is 10.5% of the market value. New industry is granted a five-year moratorium on general county taxes (with the exception of school taxes). The city tax rate is \$8.90 per \$100 of assessed value. The county rate is \$12.05 per \$100 of assessed value. The effective city tax rate (tax liability per \$100 of market value) is \$.93. The effective county rate is \$1.27. The state has no tax on a manufacturer's inventories, goods-in-process, raw materials or finished goods. Treatment facilities or equipment of manufacturing plants which control water or air pollution are exempt from all property taxation.

INDUSTRIAL SITES

Industrial sites are available in Darlington with a wide range of geographic and topographic features. In all probability, a site that will meet the needs of most industries' requirements has been identified, catalogued, and entered into the State Development Board's Computerized Site Selection System. Detailed site information is available and will be furnished upon request.

MAJOR EMPLOYERS

Name	Product or Service	Employees
APAC Carolina, Inc.	Asphalt	120
Burlington Industries (2 plants)	Dyeing and printing fabrics	1,500
James River-Dixie Products	Paper cups, containers	600
Nucor Steel	Steel angles and channels	534
Nytronics Components Group, Inc.	Inductors, resistors	700
Sherman Mfg. Co.	Ladies' dresses	122

For Additional Information Contact:

SOUTH CAROLINA STATE DEVELOPMENT BOARD
P. O. Box 927, Columbia, South Carolina 29202
(803) 758-3145