

Methamphetamine

Admissions

by

Calendar Year

Demographics

Treatment Agency

County of Residence

Federal Block Grant Region

Primary Problem Drug and Alcohol Admissions Comparison

Primary, Secondary, or Tertiary Problem Drug and Alcohol Admissions

Comparison

Miscellaneous Fact Sheet

Run Date: 23 May 2011

SOURCE: This report was produced from the SCDAODAS Substance Abuse Agencies Management Information System (SAAMIS)



S.C. Department of Alcohol & Other Drug Abuse Services

Management Information & Research (MIR)

PO Box 8268

Columbia, S.C. 29202

(803) 896-1206



Methamphetamine Trends

Calendar Years 2001 to 2010

Intakes (Presenting Problem)

Total Intakes: Alcohol + Drug

All Drug Intakes (excluding Alcohol)

Methamphetamine Intakes

% Methamphetamine of all Drug Intakes

2001	2002	2003	2004	2005	2006	2007	2008	2009	2010
34,966	29,015	27,758	28,162	29,459	30,126	30,447	30,352	32,463	32,206
14,797	12,561	12,619	13,299	14,937	15,611	15,398	14,642	14,429	13,300
130	163	264	452	858	748	652	577	549	590
0.4%	0.6%	1.0%	1.6%	2.9%	2.5%	2.1%	1.9%	1.7%	1.8%

Admissions (where drug = Primary, Secondary, or Tertiary Problem)

Total Admissions: Alcohol + Drug

Total Drug Admissions (excluding Alcohol)

Methamphetamine

% Methamphetamine

2001	2002	2003	2004	2005	2006	2007	2008	2009	2010
29,744	26,174	24,855	25,058	26,098	26,796	27,795	28,067	28,726	28,638
7,532	7,033	7,022	7,561	8,473	8,791	9,320	9,388	8,827	8,344
222	316	432	619	1,077	1,057	1,024	909	842	949
2.9%	4.5%	6.2%	8.2%	12.7%	12.0%	11.0%	9.7%	9.5%	11.4%

Admissions (Primary Problem Only)

Total Admissions: Alcohol + Drug

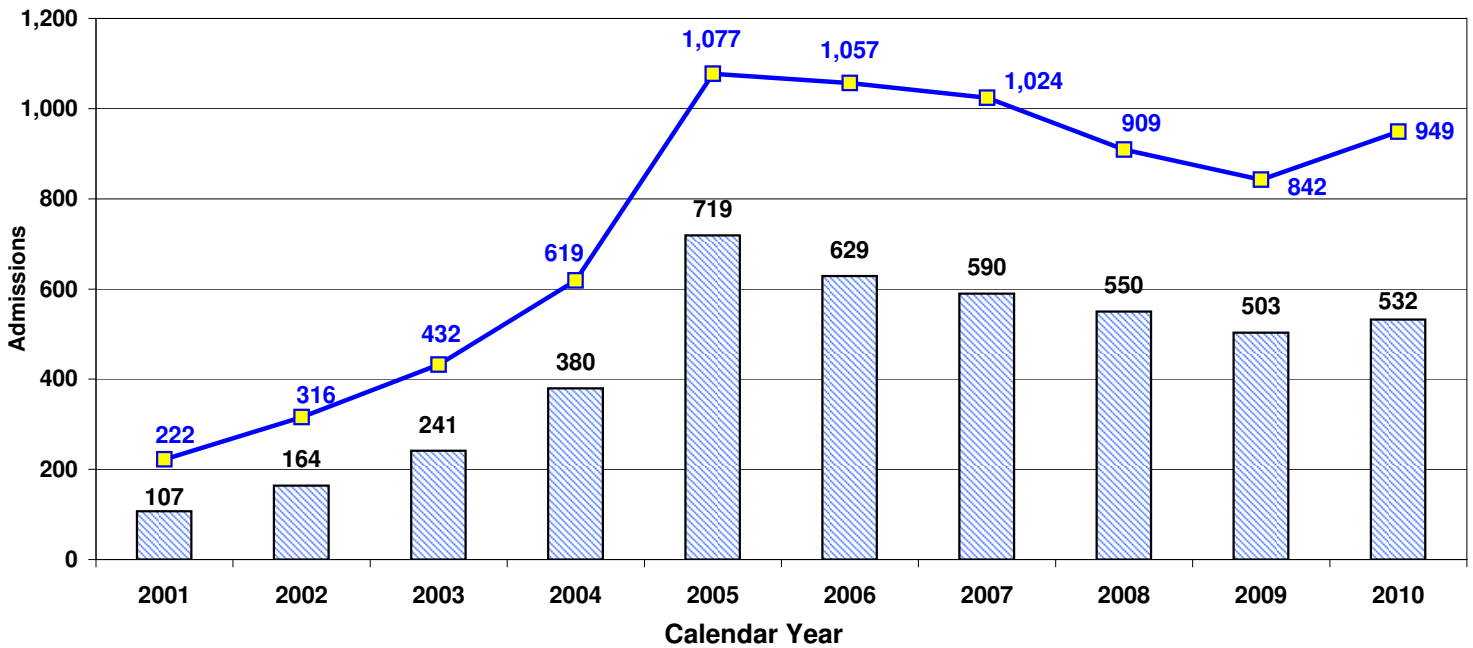
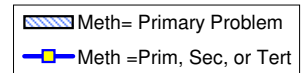
All Drugs (excluding Alcohol)

Methamphetamine

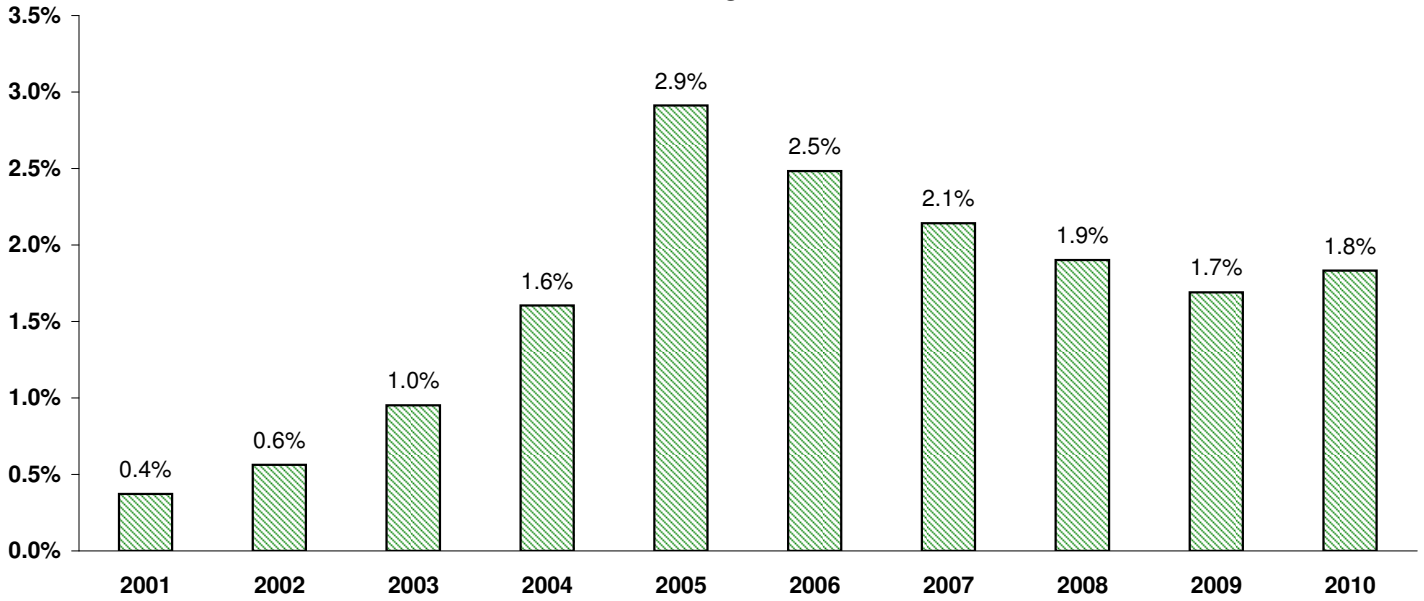
% Methamphetamine

2001	2002	2003	2004	2005	2006	2007	2008	2009	2010
29,656	25,778	24,396	24,646	25,562	26,329	27,348	27,682	28,291	28,336
11,596	10,512	10,402	11,047	12,255	12,791	13,172	12,974	12,334	11,532
107	164	241	380	719	629	590	550	503	532
0.9%	1.6%	2.3%	3.4%	5.9%	4.9%	4.5%	4.2%	4.1%	4.6%

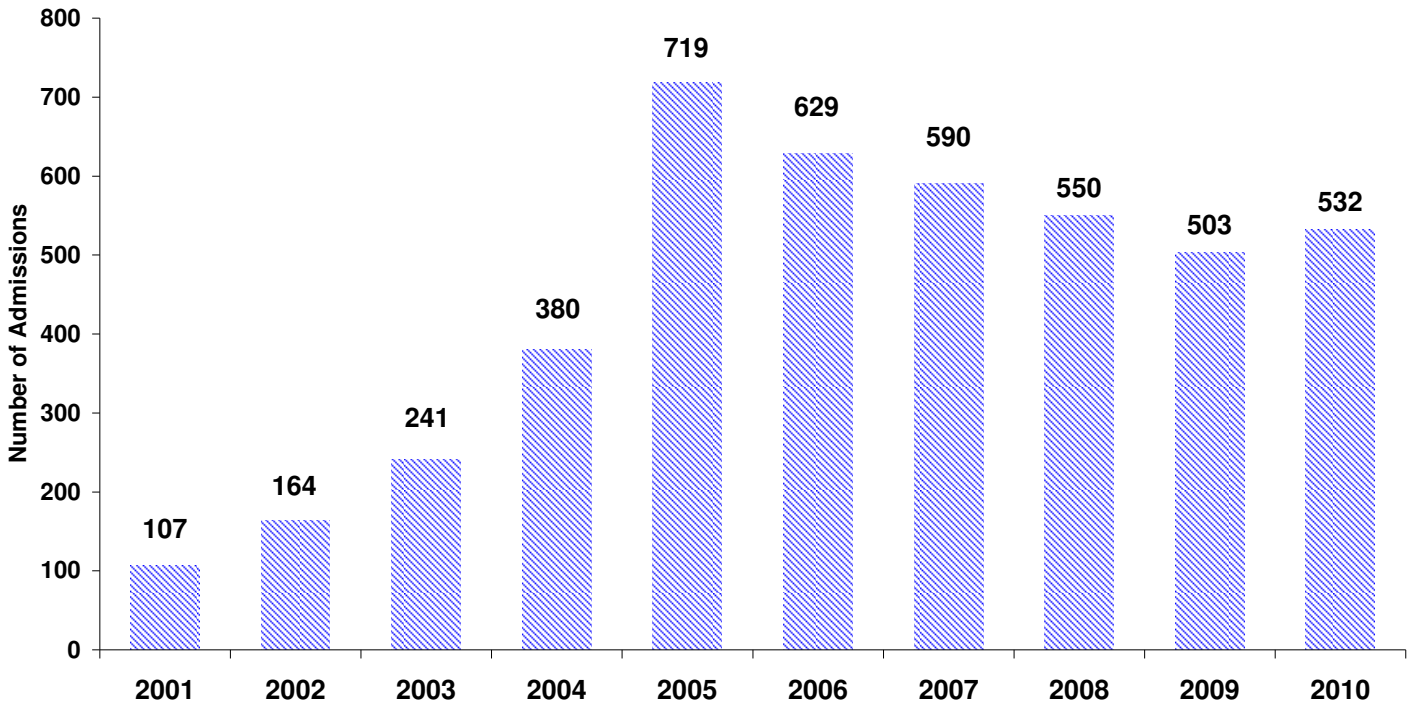
Number of Methamphetamine Admissions by Calendar Year



**Methamphetamine Intakes:
% of Total Drug and Alcohol Intakes**



**Methamphetamine Admissions by Calendar Year
(Primary Problem = Methamphetamine)**



Methamphetamine Admissions: CY 2001 - CY 2010

(Where Methamphetamine = Primary, Secondary, or Tertiary Problem)

Number of Admissions

GENDER	2001	2002	2003	2004	2005	2006	2007	2008	2009	2010
Male	143	183	220	350	523	503	500	431	373	438
Female	79	133	211	269	552	552	521	476	468	511
unknown	0	0	1	0	2	2	3	2	1	0
Total	222	316	432	619	1,077	1,057	1,024	909	842	949

Column Percent Distribution

2001	2002	2003	2004	2005	2006	2007	2008	2009	2010
64.4%	57.9%	50.9%	56.5%	48.6%	47.6%	48.8%	47.4%	44.3%	46.2%
35.6%	42.1%	48.8%	43.5%	51.3%	52.2%	50.9%	52.4%	55.6%	53.8%
0.0%	0.0%	0.2%	0.0%	0.2%	0.2%	0.3%	0.2%	0.1%	0.0%
100.0%	100.0%	100.0%	100.0%	100.0%	100.0%	100.0%	100.0%	100.0%	100.0%

Number of Admissions

RACE	2001	2002	2003	2004	2005	2006	2007	2008	2009	2010
White	211	298	419	602	1039	1025	994	885	824	925
Black	10	11	7	11	23	20	20	14	10	15
Other	0	6	5	6	13	10	7	8	7	9
unknown	1	1	1	0	2	2	3	2	1	0
Total	222	316	432	619	1,077	1,057	1,024	909	842	949

Column Percent Distribution

2001	2002	2003	2004	2005	2006	2007	2008	2009	2010
95.0%	94.3%	97.0%	97.3%	96.5%	97.0%	97.1%	97.4%	97.9%	97.5%
4.5%	3.5%	1.6%	1.8%	2.1%	1.9%	2.0%	1.5%	1.2%	1.6%
0.0%	1.9%	1.2%	1.0%	1.2%	0.9%	0.7%	0.9%	0.8%	0.9%
0.5%	0.3%	0.2%	0.0%	0.2%	0.2%	0.3%	0.2%	0.1%	0.0%
100.0%	100.0%	100.0%	100.0%	100.0%	100.0%	100.0%	100.0%	100.0%	100.0%

Number of Admissions

AGE GROUP	2001	2002	2003	2004	2005	2006	2007	2008	2009	2010
< 12	0	0	0	0	2	1	0	0	0	0
12-17	20	26	39	37	61	60	44	36	23	28
18-24	53	85	122	193	315	262	254	187	179	179
25-34	84	125	159	237	424	434	441	427	387	425
35-44	51	64	91	123	212	245	209	185	185	236
45-64	13	15	20	29	60	53	72	72	66	81
65+	0	0	0	0	1	0	1	0	1	0
unknown	1	1	1	0	2	2	3	2	1	0
Total	222	316	432	619	1,077	1,057	1,024	909	842	949

Column Percent Distribution

2001	2002	2003	2004	2005	2006	2007	2008	2009	2010
0.0%	0.0%	0.0%	0.0%	0.2%	0.1%	0.0%	0.0%	0.0%	0.0%
9.0%	8.2%	9.0%	6.0%	5.7%	5.7%	4.3%	4.0%	2.7%	3.0%
23.9%	26.9%	28.2%	31.2%	29.2%	24.8%	24.8%	20.6%	21.3%	18.9%
37.8%	39.6%	36.8%	38.3%	39.4%	41.1%	43.1%	47.0%	46.0%	44.8%
23.0%	20.3%	21.1%	19.9%	19.7%	23.2%	20.4%	20.4%	22.0%	24.9%
5.9%	4.7%	4.6%	4.7%	5.6%	5.0%	7.0%	7.9%	7.8%	8.5%
0.0%	0.0%	0.0%	0.0%	0.1%	0.0%	0.1%	0.0%	0.1%	0.0%
0.5%	0.3%	0.2%	0.0%	0.2%	0.2%	0.3%	0.2%	0.1%	0.0%
100.0%	100.0%	100.0%	100.0%	100.0%	100.0%	100.0%	100.0%	100.0%	100.0%

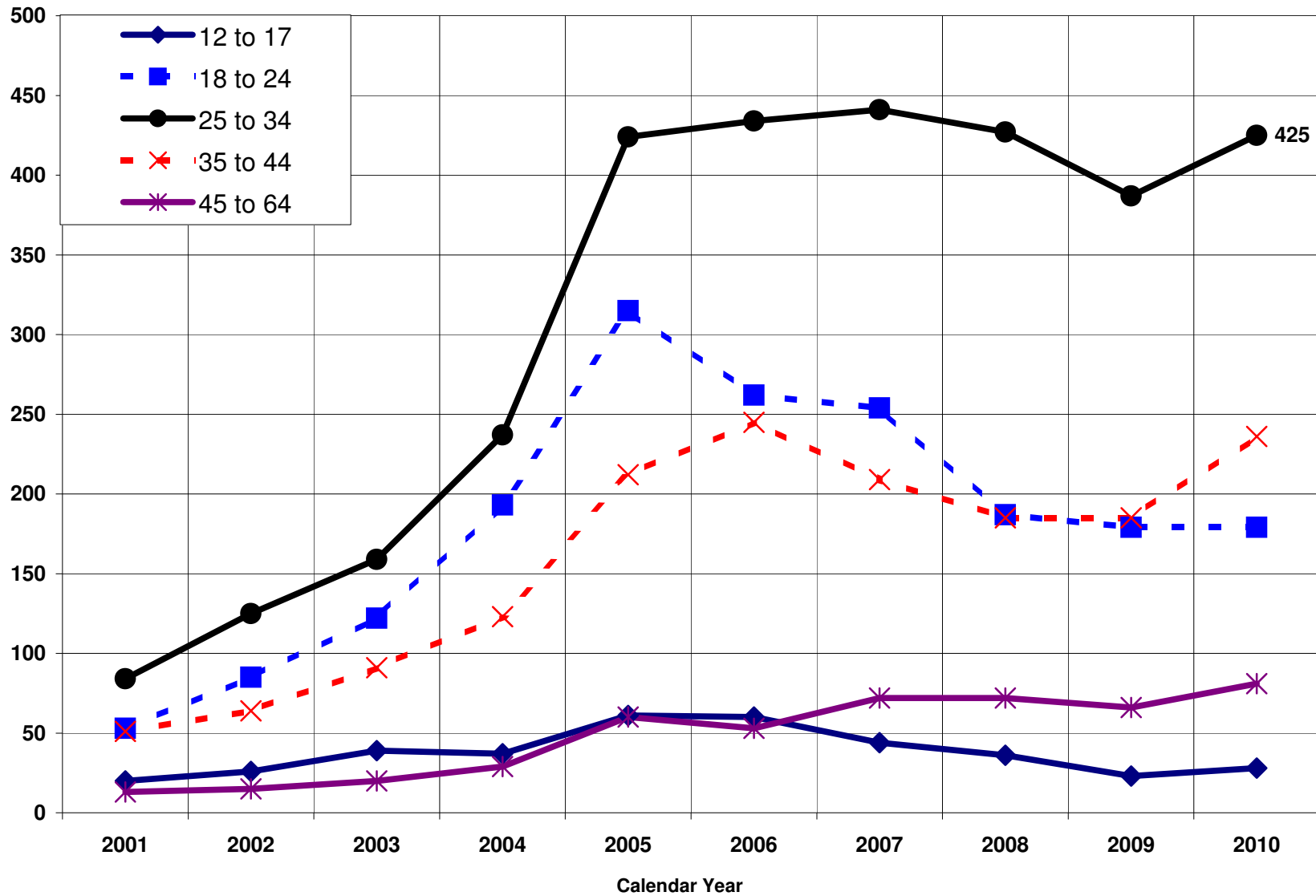
Number of Admissions

	2001	2002	2003	2004	2005	2006	2007	2008	2009	2010
Youth (12-17)	20	26	39	37	61	60	44	36	23	28
Adult	201	289	392	582	1,012	994	977	871	818	921
Total	221	315	431	619	1,073	1,054	1,021	907	841	949

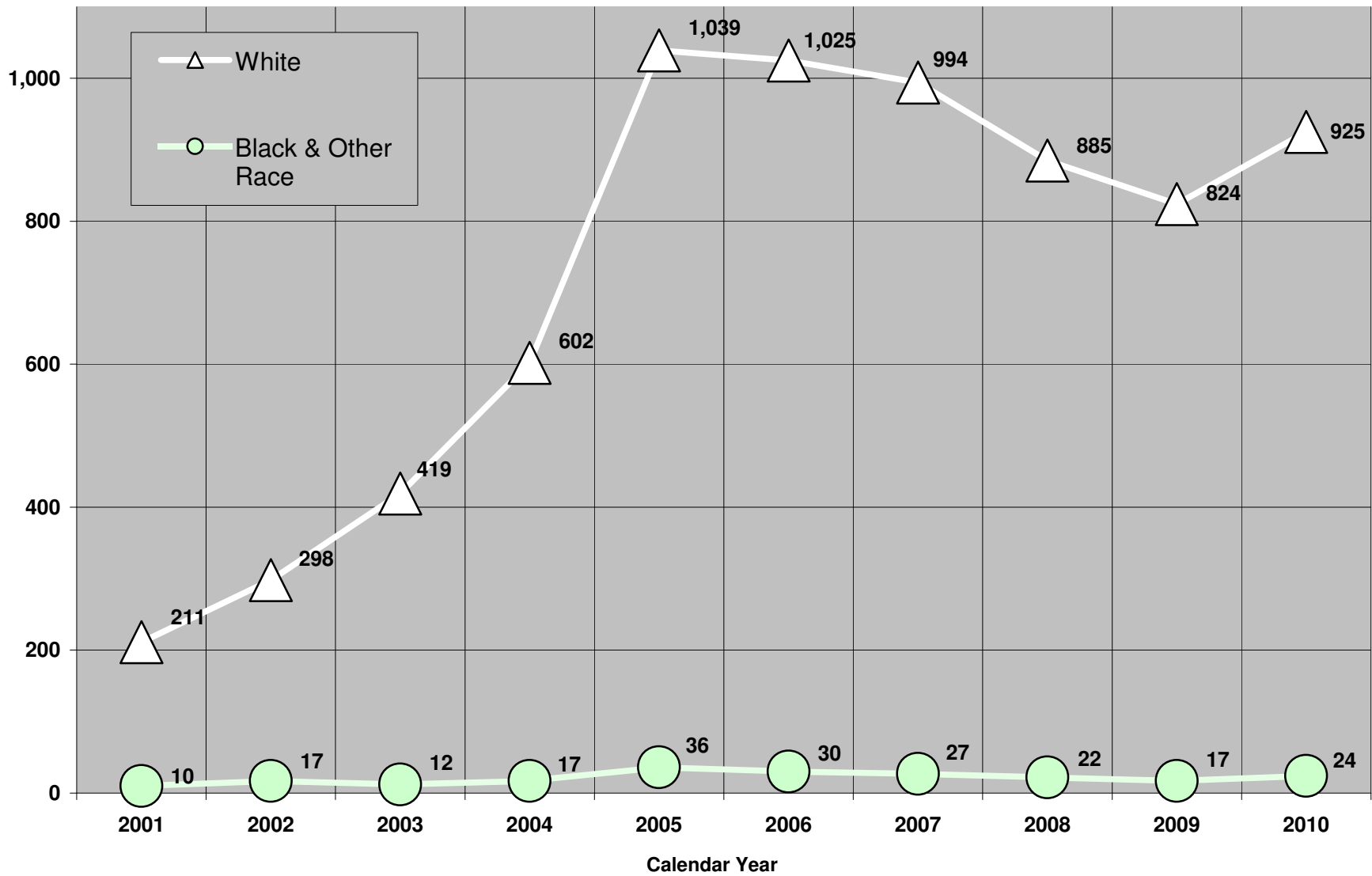
Column Percent Distribution

2001	2002	2003	2004	2005	2006	2007	2008	2009	2010
9.0%	8.3%	9.0%	6.0%	5.7%	5.7%	4.3%	4.0%	2.7%	3.0%
91.0%	91.7%	91.0%	94.0%	94.3%	94.3%	95.7%	96.0%	97.3%	97.0%
100.0%	100.0%	100.0%	100.0%	100.0%	100.0%	100.0%	100.0%	100.0%	100.0%

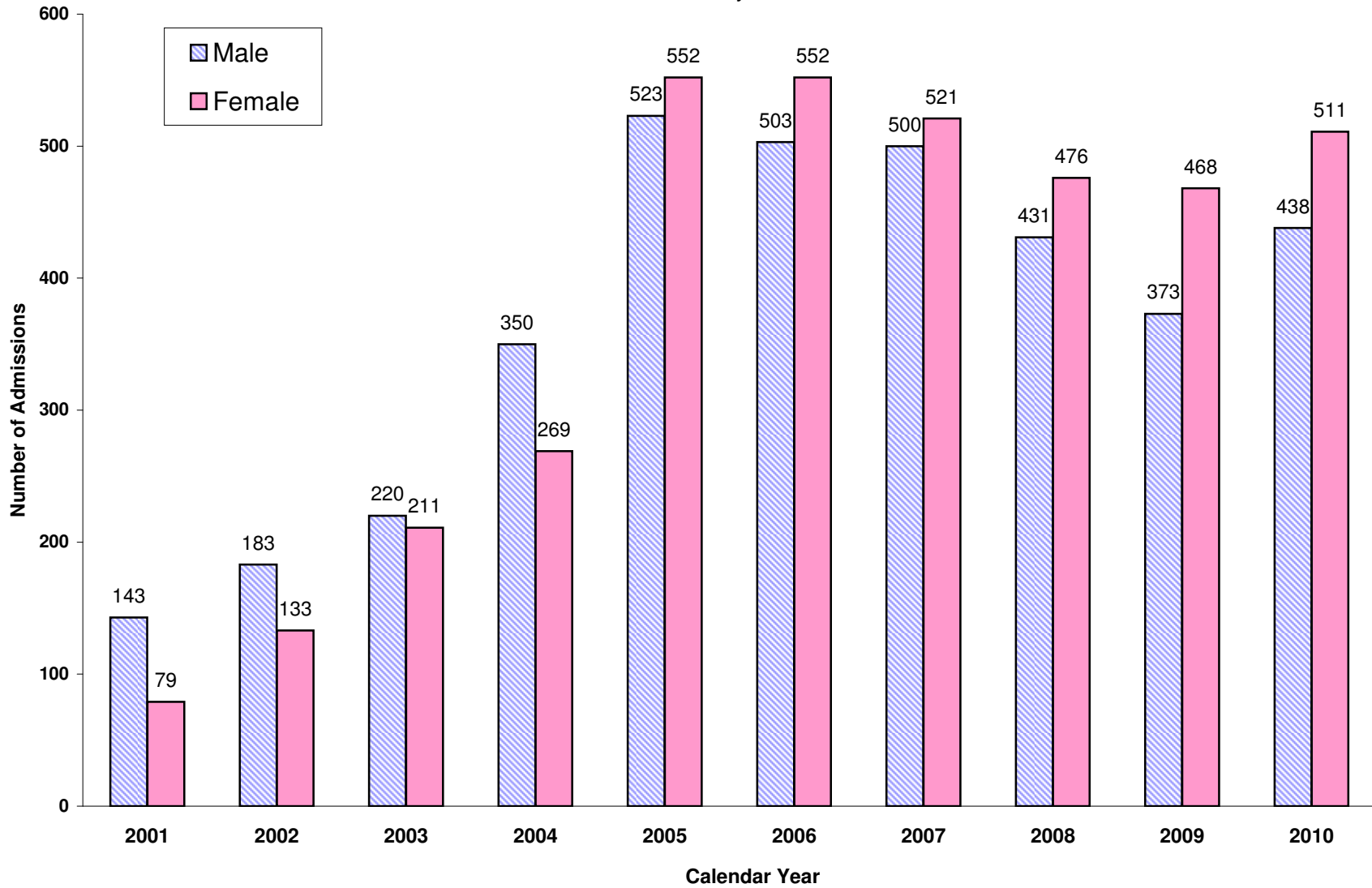
Methamphetamine Admissions by Age Group
 (Where Primary, Secondary, or Tertiary Problem = Methamphetamine)



Methamphetamine Admissions by Race Group
(Where Primary, Secondary, or Tertiary Problem = Methamphetamine)



Number of Methamphetamine Admissions:
(Where Primary, Secondary, or Tertiary Problem = Methamphetamine)
by Gender




**Methamphetamine Admissions by Treatment Agency
by Calendar Year**
(Methamphetamine = Primary, Secondary, or Tertiary Problem)

Agency	2001	2002	2003	2004	2005	2006	2007	2008	2009	2010	% Chg 2009 to 2010
Abbeville			6				7	8	8	16	100.0%
Aiken		8	10	10	48	52	40	32	26	32	23.1%
Anderson-Oconee	42	63	102	155	263	251	241	236	199	180	-9.5%
Barnwell											
Beaufort					6		6				
Berkeley			7	9	8	17	11	8			
Charleston		12	14	21	32	34	28	26	18	21	16.7%
Cherokee	15	16	27	20	36	45	49	33	29	26	-10.3%
Chester											
Chesterfield											
Clarendon											
Colleton				6	8	7		7			
Darlington					6	7					
Dillon											
Dorchester	6	7	15	14	24	31	32	28	39	18	-53.8%
Edgefield											
Fairfield											
Florence			6	7						7	
Georgetown											
Greenville	24	45	49	56	165	251	236	177	199	216	8.5%
Greenwood	27	13	21	16	21	15	35	28	21	46	119.0%
Allendale-Hampton-Jasper											
Horry						6					
Kershaw											
Lancaster											
Laurens		7	14	35	24	29	24	30	34	56	64.7%
Lee											
McCormick											
Marion											
Marlboro											
Newberry		9	9	17	17	7	14	11	13	12	-7.7%
Orangeburg-Bamberg-Calhoun			9	9	8	7		8	8	11	37.5%
Pickens	18	33	46	52	116	76	109	106	96	121	26.0%
Lexington-Richland	14	18	24	40	58	63	54	33	32	66	106.3%
Saluda											
Spartanburg	36	41	47	82	181	106	93	86	78	68	-12.8%
Sumter				6							
Union				7	7			7			
Williamsburg											
York	10	19	11	18	12	19	12	13	6	14	133.3%
Total	222	316	432	619	1,077	1,057	1,024	909	842	949	12.7%

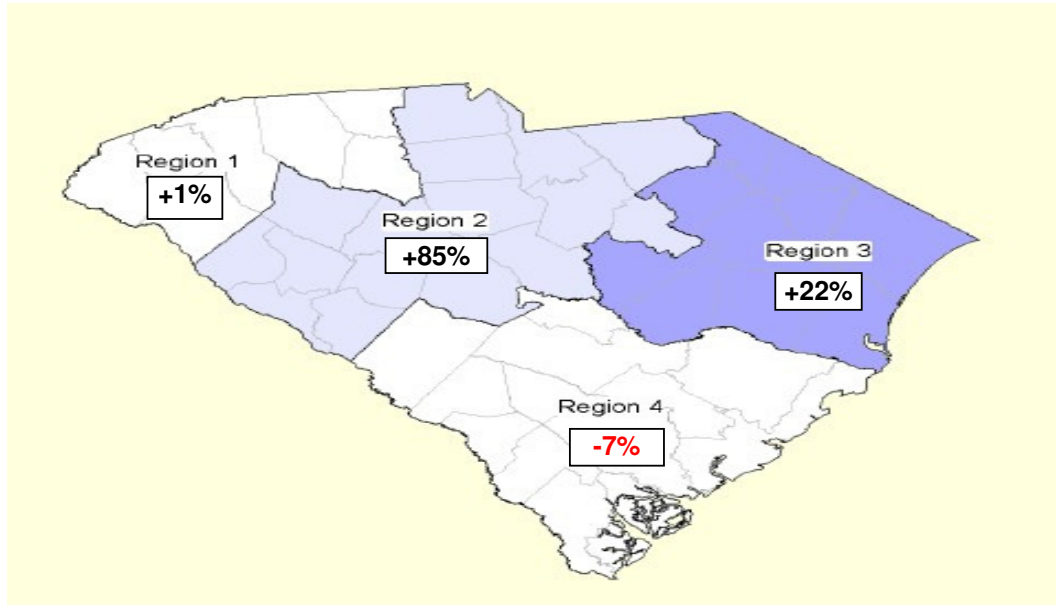
■ = Client counts of 5 or fewer suppressed due to confidentiality policies.

Methamphetamine Admissions by Client's County of Residence
 by Client's County of Residence by Calendar Year
 (Methamphetamine = Primary, Secondary, or Tertiary Problem)

Cty. Code	County of Residence	2001	2002	2003	2004	2005	2006	2007	2008	2009	2010	% Chg 2009 to 2010
01	Abbeville			8	9	8	7	14	9	10	18	80.0%
02	Aiken		9	6	11	48	52	41	33	27	29	7.4%
03	Allendale											
04	Anderson	32	51	83	113	184	209	173	192	153	128	-16.3%
05	Bamberg											
06	Barnwell											
07	Beaufort							6				
08	Berkeley		10		11	9	22	19	12	9		
09	Calhoun											
10	Charleston		7	9	12	23	26	16	16	16	16	0.0%
11	Cherokee	16	18	32	21	38	51	52	34	31	25	-19.4%
12	Chester											
13	Chesterfield											
14	Clarendon											
15	Colleton			6	7	8			7			
16	Darlington			6			7					
17	Dillon											
18	Dorchester			17	18	24	31	33	29	33	17	-48.5%
19	Edgefield											
20	Fairfield											
21	Florence											
22	Georgetown											
23	Greenville	21	32	41	54	162	233	223	174	175	181	3.4%
24	Greenwood	26	15	21	16	22	15	35	28	16	43	168.8%
25	Hampton											
26	Horry				6	8	9				6	
27	Jasper											
28	Kershaw											
29	Lancaster											
30	Laurens		11	21	43	31	39	28	34	46	63	37.0%
31	Lee				6							
32	Lexington	7	9	18	27	42	36	30	18	26	64	146.2%
33	McCormick											
34	Marion											
35	Marlboro											
36	Newberry											
37	Oconee	15	18	23	48	99	67	92	69	63	73	15.9%
38	Orangeburg											
39	Pickens	20	47	55	63	142	89	125	111	108	133	23.1%
40	Richland				9	17	24	20	12	9	12	33.3%
41	Saluda											
42	Spartanburg	30	35	43	74	142	84	67	69	78	80	2.6%
43	Sumter				6		6					
44	Union				9	8			7			
45	Williamsburg											
46	York	10	14	8	15	12	10	8	13		13	
47	Out-Of-State					6						
	Unknown											
	Total	222	316	432	619	1,077	1,057	1,024	909	842	948	12.6%

 = Client counts of 5 or fewer suppressed due to confidentiality policies.

Methamphetamine Admissions by Federal Block Grant Regions
(Methamphetamine = Primary, Secondary, or Tertiary Problem)
Percent Change from CY-2009 to CY-2010



Federal Region	2001	2002	2003	2004	2005	2006	2007	2008	2009	2010	% Chg 2009 to 2010
1- Upstate	136	200	271	372	768	732	732	645	604	611	1.2%
2-Midlands	57	73	90	145	149	145	153	137	120	223	85.8%
3- Pee Dee	8	8	10	31	23	27	11	16	18	22	22.2%
4- Low Country	21	35	61	71	137	153	128	111	100	93	-7.0%
Statewide	222	316	432	619	1077	1057	1024	909	842	949	12.7%

Admissions By Region as Percent of Total Methamphetamine Problem Type Admissions											% Chg 2009 to 2010
Federal Region	2001	2002	2003	2004	2005	2006	2007	2008	2009	2010	
1- Upstate	61.3%	63.3%	62.7%	60.1%	71.3%	69.3%	71.5%	71.0%	71.7%	64.4%	-10.2%
2-Midlands	25.7%	23.1%	20.8%	23.4%	13.8%	13.7%	14.9%	15.1%	14.3%	23.5%	64.9%
3- Pee Dee	3.6%	2.5%	2.3%	5.0%	2.1%	2.6%	1.1%	1.8%	2.1%	2.3%	8.4%
4- Low Country	9.5%	11.1%	14.1%	11.5%	12.7%	14.5%	12.5%	12.2%	11.9%	9.8%	-17.5%
Statewide	100.0%	100.0%	100.0%	100.0%	100.0%	100.0%	100.0%	100.0%	100.0%	100.0%	

1-Upstate

Anderson
 Cherokee
 Greenville
 Oconee
 Pickens
 Spartanburg
 Union

2-Midlands

Abbeville
 Chester
 Edgefield
 Fairfield
 Greenwood
 Kershaw
 Lancaster
 Laurens
 Lee
 Lexington
 Richland
 McCormick
 Newberry
 Saluda
 York

3-Pee Dee

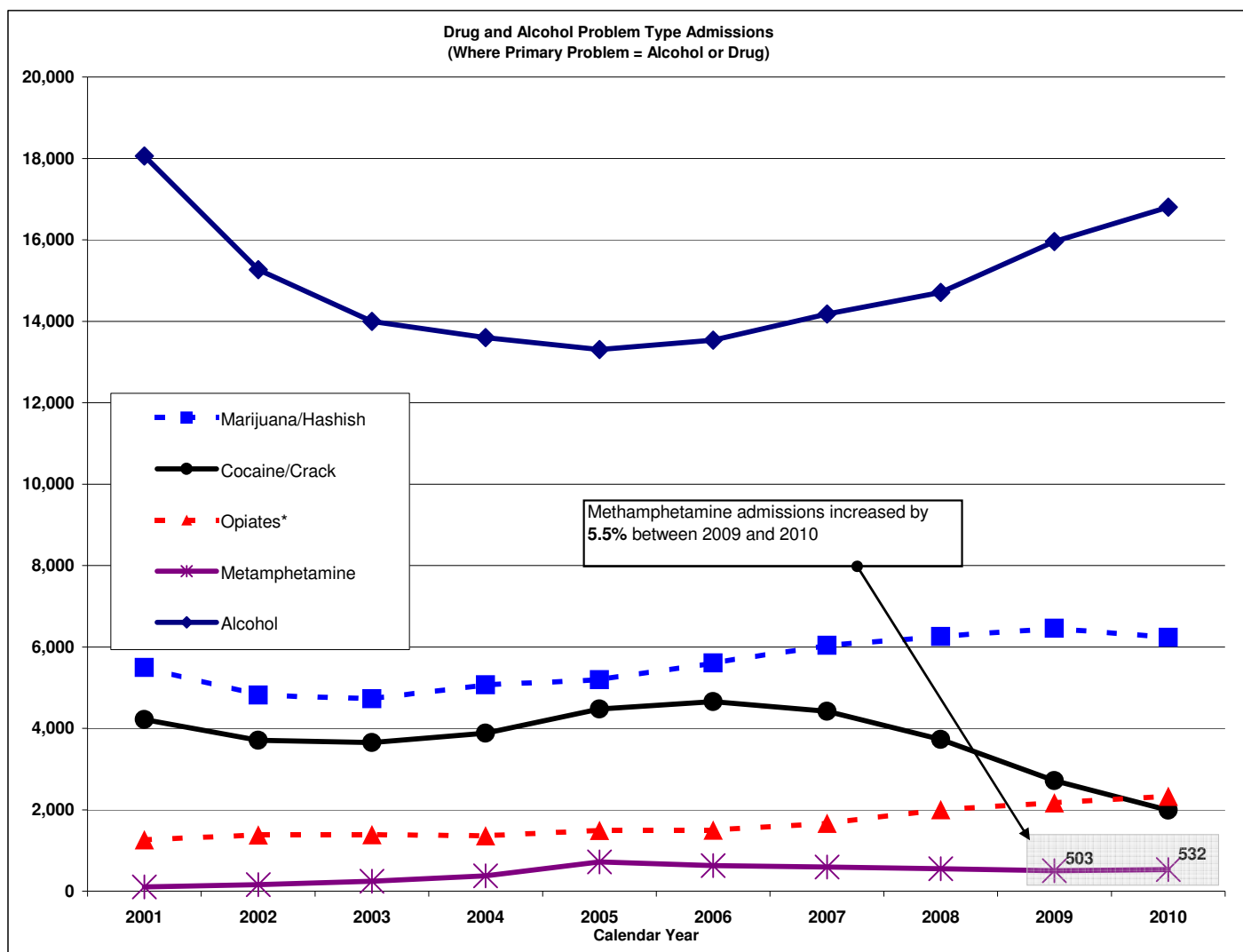
Chesterfield
 Clarendon
 Darlington
 Dillon
 Florence
 Georgetown
 Horry
 Marion
 Marlboro
 Sumter
 Williamsburg

4-Low Country

Aiken
 Allendale
 Bamberg
 Barnwell
 Beaufort
 Berkeley
 Calhoun
 Charleston
 Colleton
 Dorchester
 Hampton
 Jasper
 Orangeburg

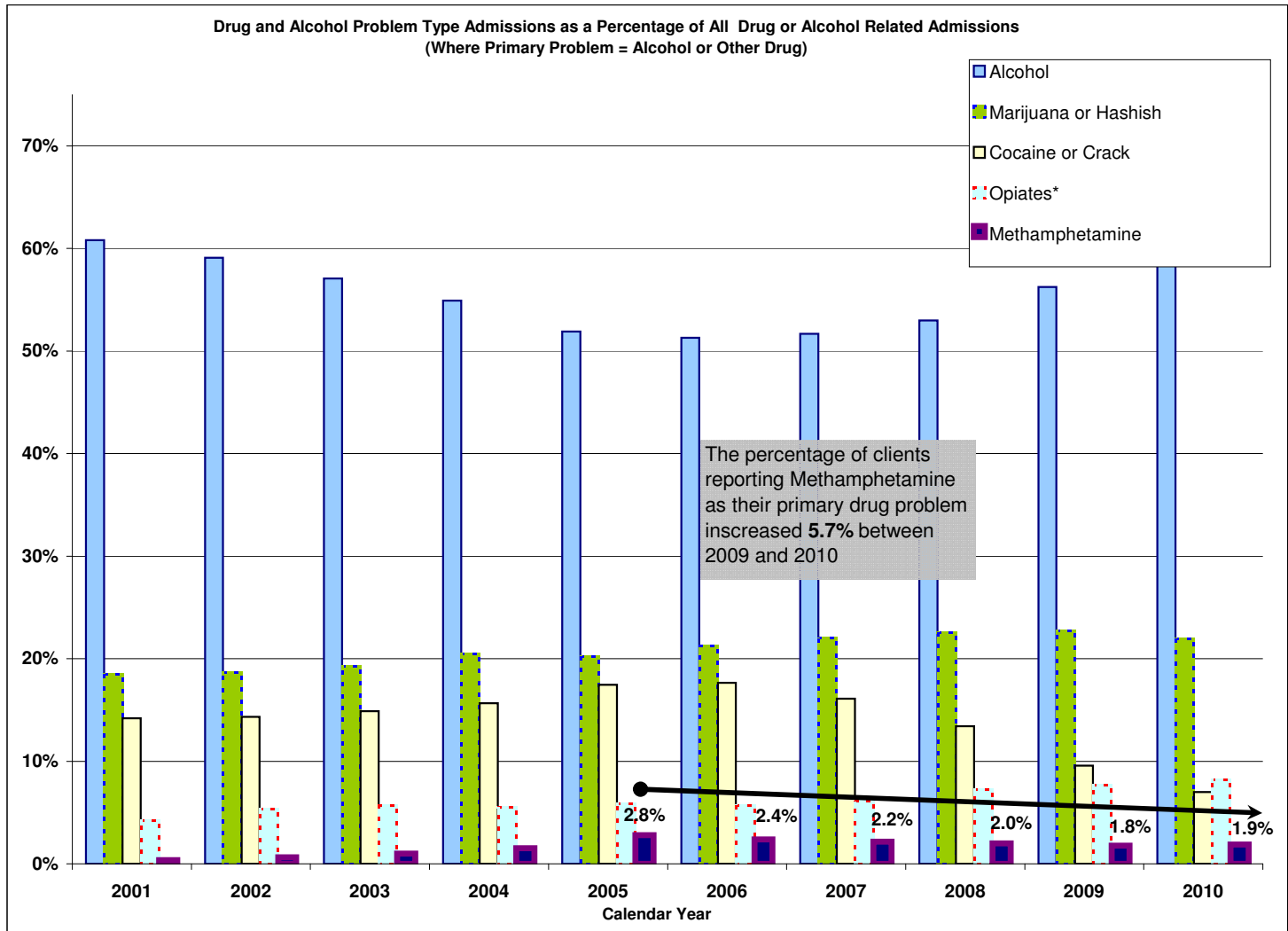
South Carolina Department of Alcohol And Other Drug Abuse Services Admission Trends

DAODAS Admissions By Calendar Year For Drug and Alcohol Problems Only (Primary Problem)										
Primary Problem Type	2001	2002	2003	2004	2005	2006	2007	2008	2009	2010
Heroin	419	433	430	325	338	320	321	355	353	304
Methadone	26	57	38	55	93	65	83	94	105	77
Nicotine	47	61	123	112	76	71	83	81	78	48
Other Opiates & Synthetics	616	589	636	700	802	918	1,050	1,319	1,448	1,603
OxyContin	203	300	287	280	261	195	214	234	267	346
Alcohol	18,060	15,266	13,994	13,599	13,307	13,538	14,176	14,708	15,957	16,804
Barbiturates	8	7	10	13	14	17	6	12	11	5
Methylphenidate	0	0	0	0	0	0	0	2	1	2
Other Sedatives or Hypnotics	130	106	108	101	85	93	127	109	152	135
Metamphetamine	107	164	241	380	719	629	590	550	503	532
Other Amphetamines	75	80	88	71	95	102	72	63	61	51
Other Stimulants	16	6	8	7	12	7	8	5	4	4
Cocaine/Crack	4,215	3,704	3,648	3,878	4,477	4,657	4,416	3,725	2,714	1,990
Marijuana/Hashish	5,495	4,820	4,726	5,067	5,191	5,608	6,036	6,257	6,455	6,232
Hallucinogens except PCP	45	29	20	16	14	15	30	24	18	13
Inhalants	33	41	27	19	20	30	28	22	25	19
Over-the-Counter	9	9	9	6	16	14	19	9	14	6
Benzodiazepine	97	98	93	93	92	104	144	162	175	180
Other Tranquilizers	6	4	2	3	2	1	3	1	1	0
PCP	2	1	0	0	0	0	4	5	0	4
Other Drug	94	64	31	32	23	16	21	26	27	29



Opiates = Heroin, Methadone, Oxycontin, and Other Opiates/Synthetics

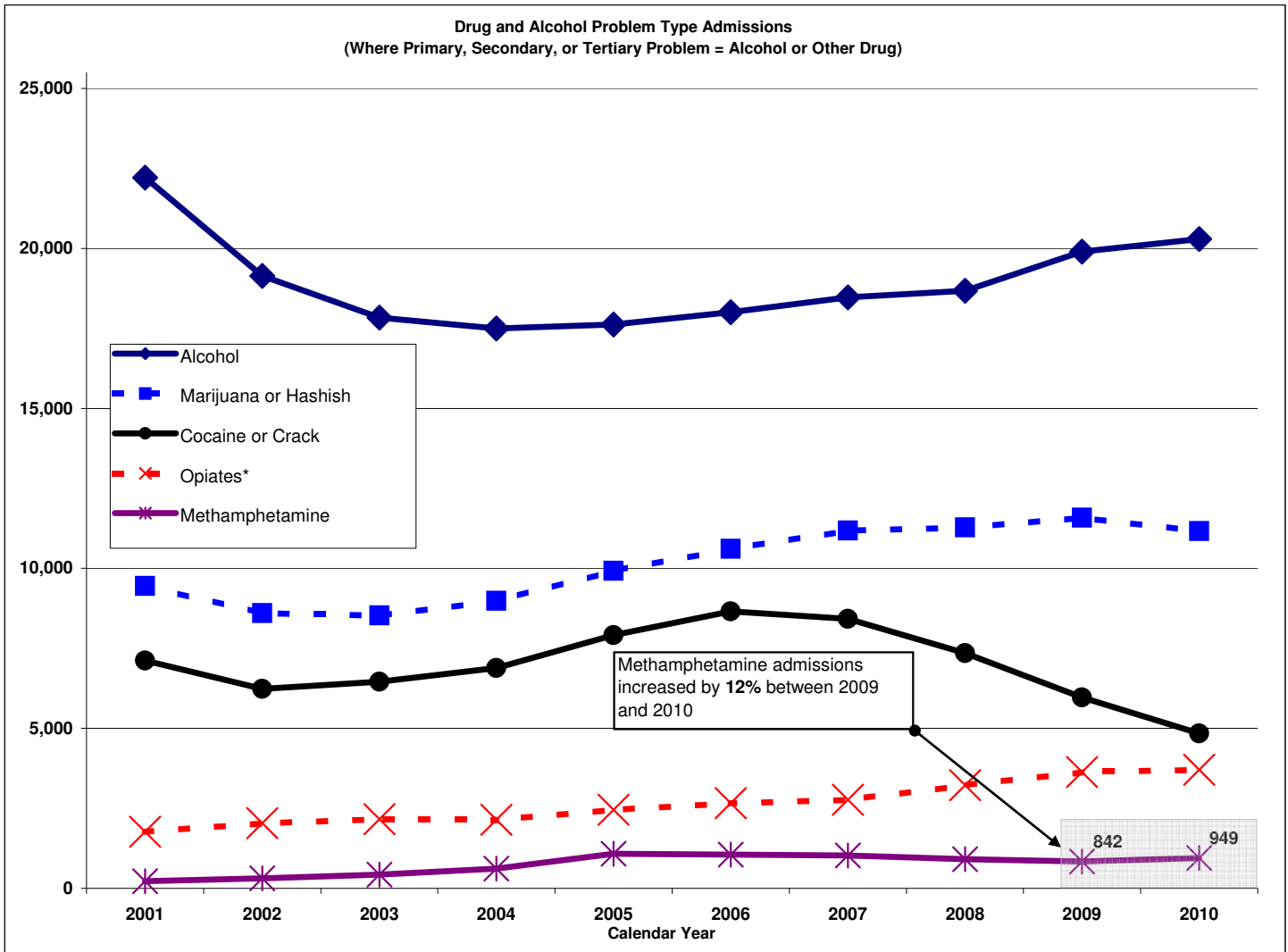
Drug and Alcohol Problem Type Categories as a Percent of Total Drug and Alcohol Problem Admissions (Primary Problem)										
Primary Problem Type	2001	2002	2003	2004	2005	2006	2007	2008	2009	2010
Heroin	1.4%	1.7%	1.8%	1.3%	1.3%	1.2%	1.2%	1.3%	1.2%	1.1%
Methadone	0.1%	0.2%	0.2%	0.2%	0.4%	0.2%	0.3%	0.3%	0.4%	0.3%
Nicotine	0.2%	0.2%	0.5%	0.5%	0.3%	0.3%	0.3%	0.3%	0.3%	0.2%
Other Opiates and Synthetics	2.1%	2.3%	2.6%	2.8%	3.1%	3.5%	3.8%	4.8%	5.1%	5.6%
OxyContin	0.7%	1.2%	1.2%	1.1%	1.0%	0.7%	0.8%	0.8%	0.9%	1.2%
Alcohol	60.8%	59.1%	57.1%	54.9%	51.9%	51.3%	51.7%	53.0%	56.2%	59.2%
Barbiturates	0.0%	0.0%	0.0%	0.1%	0.1%	0.1%	0.0%	0.0%	0.0%	0.0%
Methylphenidate	0.0%	0.0%	0.0%	0.0%	0.0%	0.0%	0.0%	0.0%	0.0%	0.0%
Other Sedatives or Hypnotics	0.4%	0.4%	0.4%	0.4%	0.3%	0.4%	0.5%	0.4%	0.5%	0.5%
Methamphetamine	0.4%	0.6%	1.0%	1.5%	2.8%	2.4%	2.2%	2.0%	1.8%	1.9%
Other Amphetamines	0.3%	0.3%	0.4%	0.3%	0.4%	0.4%	0.3%	0.2%	0.2%	0.2%
Other Stimulants	0.1%	0.0%	0.0%	0.0%	0.0%	0.0%	0.0%	0.0%	0.0%	0.0%
Cocaine or Crack	14.2%	14.3%	14.9%	15.7%	17.5%	17.6%	16.1%	13.4%	9.6%	7.0%
Marijuana or Hashish	18.5%	18.7%	19.3%	20.5%	20.2%	21.2%	22.0%	22.5%	22.8%	22.0%
Hallucinogens except PCP	0.2%	0.1%	0.1%	0.1%	0.1%	0.1%	0.1%	0.1%	0.1%	0.0%
Inhalants	0.1%	0.2%	0.1%	0.1%	0.1%	0.1%	0.1%	0.1%	0.1%	0.1%
Over-the-Counter	0.0%	0.0%	0.0%	0.0%	0.1%	0.1%	0.1%	0.0%	0.0%	0.0%
Benzodiazepine	0.3%	0.4%	0.4%	0.4%	0.4%	0.4%	0.5%	0.6%	0.6%	0.6%
Other Tranquilizers	0.0%	0.0%	0.0%	0.0%	0.0%	0.0%	0.0%	0.0%	0.0%	0.0%
PCP	0.0%	0.0%	0.0%	0.0%	0.0%	0.0%	0.0%	0.0%	0.0%	0.0%
Other Drug	0.3%	0.2%	0.1%	0.1%	0.1%	0.1%	0.1%	0.1%	0.1%	0.1%



Opiates = Heroin, Methadone, Oxycontin, and Other Opiates/Synthetics

South Carolina Department of Alcohol And Other Drug Abuse Services Admission Trends

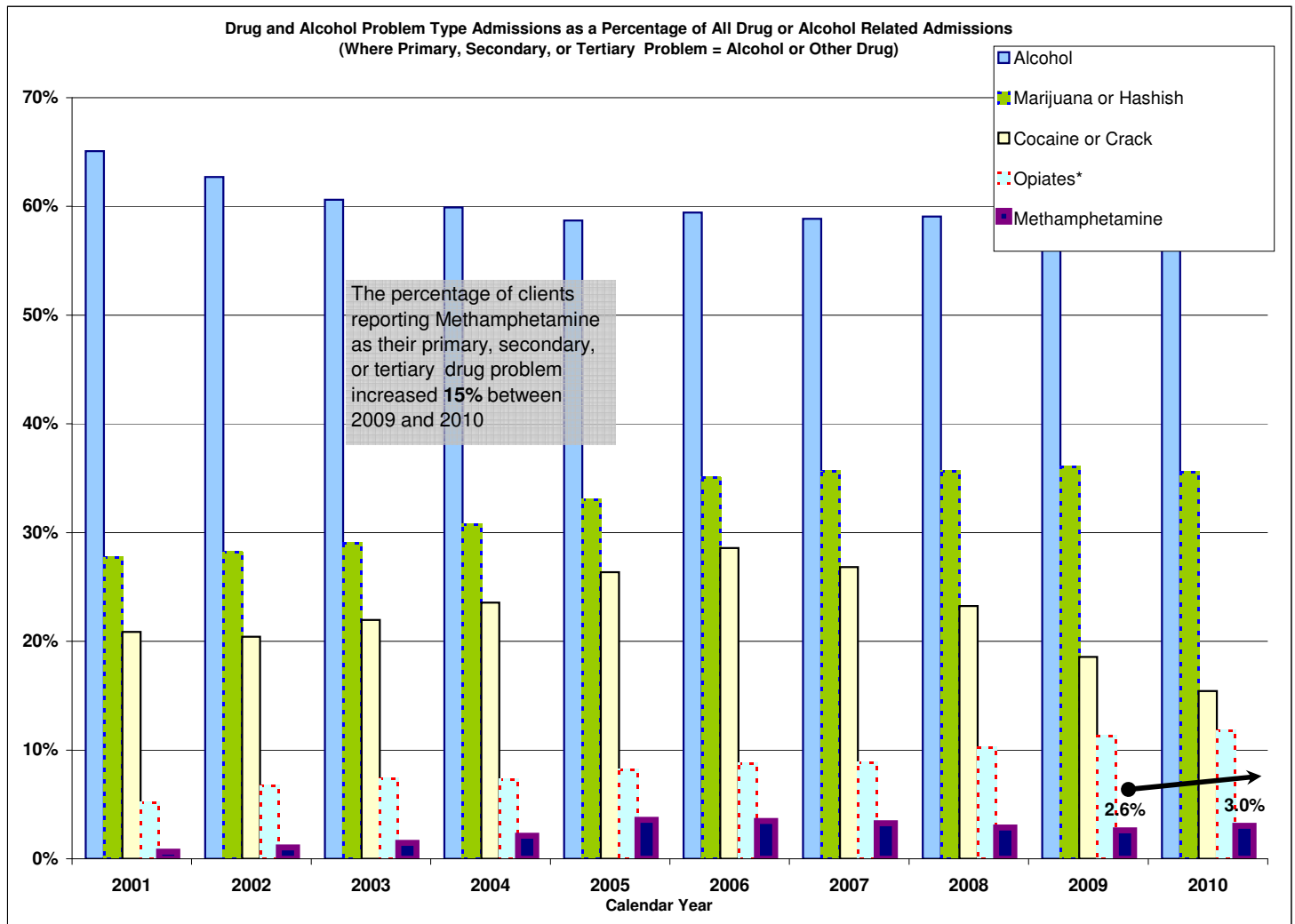
DAODAS Admissions By Calendar Year For Drug and Alcohol Problems Only (Primary, Secondary, or Tertiary Problem Type)										
Prim, Sec, or Tert Problem	2001	2002	2003	2004	2005	2006	2007	2008	2009	2010
Heroin	535	549	579	437	479	486	463	490	491	429
Methadone	46	87	73	85	137	114	132	153	162	117
Nicotine	420	758	2,003	2,822	3,228	3,491	3,735	4,069	3,862	3,509
Other Opiates and Synthetics	969	1,003	1,112	1,209	1,456	1,731	1,856	2,246	2,566	2,686
OxyContin	221	401	399	410	383	329	322	335	413	473
Alcohol	22,212	19,141	17,833	17,497	17,625	18,005	18,475	18,679	19,899	20,294
Barbiturates	15	26	35	35	33	29	24	33	27	19
Methylphenidate	0	0	0	0	0	0	0	11	8	8
Other Sedatives or Hypnotics	448	398	369	339	375	417	456	506	639	632
Methamphetamine	222	316	432	619	1,077	1,057	1,024	909	842	949
Other Amphetamines	186	207	205	191	213	219	196	167	179	188
Other Stimulants	36	24	26	31	30	18	25	18	28	20
Cocaine or Crack	7,119	6,237	6,460	6,885	7,910	8,657	8,422	7,353	5,967	4,843
Marijuana or Hashish	9,448	8,603	8,532	8,984	9,926	10,614	11,183	11,279	11,582	11,164
Hallucinogens except PCP	124	98	67	55	63	75	121	134	110	99
Inhalants	56	66	57	45	44	59	56	44	55	50
Over-the-Counter	20	15	15	20	30	30	47	33	36	26
Benzodiazepine	331	368	374	409	404	521	613	720	836	866
Other Tranquilizers	16	10	14	13	10	5	7	4	9	3
PCP	5	6	2	1	4	1	7	8	2	6
Other Drug	168	91	49	57	59	48	60	64	51	59



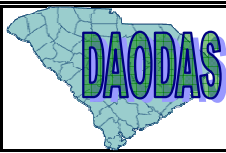
Opiates = Heroin, Methadone, Oxycontin, and Other Opiates/Synthetics

South Carolina Department of Alcohol And Other Drug Abuse Services Admission Trends

Drug and Alcohol Problem Type Categories as a Percent of Total Drug and Alcohol Problem Admissions (Primary, Secondary, or Tertiary Problem Type)										
Prim, Sec, or Tert Problem	2001	2002	2003	2004	2005	2006	2007	2008	2009	2010
Heroin	1.6%	1.8%	2.0%	1.5%	1.6%	1.6%	1.5%	1.5%	1.5%	1.4%
Methadone	0.1%	0.3%	0.2%	0.3%	0.5%	0.4%	0.4%	0.5%	0.5%	0.4%
Nicotine	1.2%	2.5%	6.8%	9.7%	10.8%	11.5%	11.9%	12.9%	12.0%	11.2%
Other Opiates and Synthetics	2.8%	3.3%	3.8%	4.1%	4.8%	5.7%	5.9%	7.1%	8.0%	8.6%
OxyContin	0.6%	1.3%	1.4%	1.4%	1.3%	1.1%	1.0%	1.1%	1.3%	1.5%
Alcohol	65.1%	62.7%	60.6%	59.9%	58.7%	59.4%	58.9%	59.1%	62.0%	64.6%
Barbiturates	0.0%	0.1%	0.1%	0.1%	0.1%	0.1%	0.1%	0.1%	0.1%	0.1%
Methylphenidate	0.0%	0.0%	0.0%	0.0%	0.0%	0.0%	0.0%	0.0%	0.0%	0.0%
Other Sedatives or Hypnotics	1.3%	1.3%	1.3%	1.2%	1.2%	1.4%	1.5%	1.6%	2.0%	2.0%
Methamphetamine	0.7%	1.0%	1.5%	2.1%	3.6%	3.5%	3.3%	2.9%	2.6%	3.0%
Other Amphetamines	0.5%	0.7%	0.7%	0.7%	0.7%	0.7%	0.6%	0.5%	0.6%	0.6%
Other Stimulants	0.1%	0.1%	0.1%	0.1%	0.1%	0.1%	0.1%	0.1%	0.1%	0.1%
Cocaine or Crack	20.9%	20.4%	22.0%	23.6%	26.3%	28.6%	26.8%	23.3%	18.6%	15.4%
Marijuana or Hashish	27.7%	28.2%	29.0%	30.8%	33.1%	35.0%	35.6%	35.7%	36.1%	35.5%
Hallucinogens except PCP	0.4%	0.3%	0.2%	0.2%	0.2%	0.2%	0.4%	0.4%	0.3%	0.3%
Inhalants	0.2%	0.2%	0.2%	0.2%	0.1%	0.2%	0.2%	0.1%	0.2%	0.2%
Over-the-Counter	0.1%	0.0%	0.1%	0.1%	0.1%	0.1%	0.1%	0.1%	0.1%	0.1%
Benzodiazepine	1.0%	1.2%	1.3%	1.4%	1.3%	1.7%	2.0%	2.3%	2.6%	2.8%
Other Tranquilizers	0.0%	0.0%	0.0%	0.0%	0.0%	0.0%	0.0%	0.0%	0.0%	0.0%
PCP	0.0%	0.0%	0.0%	0.0%	0.0%	0.0%	0.0%	0.0%	0.0%	0.0%
Other Drug	0.5%	0.3%	0.2%	0.2%	0.2%	0.2%	0.2%	0.2%	0.2%	0.2%



Opiates = Heroin, Methadone, Oxycontin, and Other Opiates/Synthetics



S.C. SUBSTANCE ABUSE ADMISSIONS

Methamphetamine Admissions Demographics and Other Client Characteristics CY- 2009 and 2010 Combined

	<u>Under 18</u> (N) = 51		<u>18 and OLDER</u> (N) = 1,739		<u>*TOTAL ADMISSIONS</u> (N) = 1,790	
	(n)	%	(n)	%	(n)	%
GENDER						
Male	20	39.2%	791	45.5%	811	45.3%
Female	31	60.8%	948	54.5%	979	54.7%
not reported		0.0%		0.0%	1	0.1%
RACE						
White	47	92.2%	1,702	97.9%	1,749	97.7%
Black	3	5.9%	22	1.3%	25	1.4%
Other	1	2.0%	15	0.9%	16	0.9%
not reported		0.0%		0.0%	1	0.1%
ANY PRIOR ADMISSIONS						
Prior Admissions to Outpatient Services	21	41.2%	761	43.8%	782	43.7%
Prior Admissions to Inpatient Services	10	19.6%	341	19.6%	351	19.6%
Prior Admissions to Detox Services	1	2.0%	208	12.0%	209	11.7%
Employment/Student Status						
Employed Full or Part Time	0	0.0%	366	21.0%	366	20.4%
Student Full or Part Time	47	92.2%	68	3.9%	115	6.4%
Living Arrangements in Past 30 Days						
Homeless	1	2.0%	124	7.1%	125	7.0%
Jail or Correctional Facility	6	11.8%	58	3.3%	64	3.6%
Hospital or Other Residential Setting	10	19.6%	74	4.3%	84	4.7%
Youth or Adult Living Independently	34	66.7%	1,483	85.3%	1,517	84.7%
Other Alcohol or Drug Problems						
Alcohol	19	37.3%	588	33.8%	607	33.9%
Cocaine-Crack	9	17.6%	272	15.6%	281	15.7%
Marijuana	36	70.6%	681	39.2%	717	40.1%
Methamphetamine	51	100.0%	1,739	100.0%	1,790	100.0%
Opiates	5	9.8%	306	17.6%	311	17.4%
Other Drugs	4	7.8%	168	9.7%	172	9.6%
Any Drug Injection Use in Last 30 Days	3	5.9%	154	8.9%	157	8.8%
Emergency Room Use in Last 30 Days						
Treatment for Medical or Physical Problem	0	0.0%	116	6.7%	116	6.5%
Treatment for Mental Health Problem	0	0.0%	19	1.1%	19	1.1%
Treatment for Alcohol or Drug Problem	2	3.9%	62	3.6%	64	3.6%
Treatment for Any of the Above Problems	2	3.9%	176	10.1%	178	9.9%
CRIMINAL JUSTICE						
Percent of clients admitted due to DUI	0	0.0%	197	11.3%	197	11.0%
Arrested in the prior 30 days?	6	11.8%	106	6.1%	112	6.3%
Client's Entry to Services the Result of Arrest	17	33.3%	581	33.4%	598	33.4%
One or More Nights in Jail in the prior 30 days	4	7.8%	125	7.2%	129	7.2%
Arrested in the last 6 months?	19	37.3%	408	23.5%	427	23.9%
Any Type of Self Reported CJ System Contact	32	62.7%	902	51.9%	934	52.2%
SOURCE OF REFERRAL						
AOD Care Provider	6	11.8%	61	3.5%	67	3.7%
Criminal Justice System	20	39.2%	589	33.9%	609	34.0%
Emergency Room or Hospital	1	2.0%	52	3.0%	53	3.0%
Employer / EAP	0	0.0%	0	0.0%	0	0.0%
Individual (Self, Relative, or Friend)	5	9.8%	297	17.1%	302	16.9%
Mental Health Care Provider	1	2.0%	30	1.7%	31	1.7%
Other Community Referral	5	9.8%	36	2.1%	41	2.3%
Other Health Care Provider	0	0.0%	5	0.3%	5	0.3%
School	2	3.9%	0	0.0%	2	0.1%
Social Services	11	21.6%	656	37.7%	667	37.3%

Opiates = Heroin, Methadone, Oxycontin, and Other Opiates/Synthetics

Other Drugs = Barbiturates, Methylphenidate, Other Sedatives, Other Amphetamines, Other Stimulants, Hallucinogens, Inhalants, Over the Counter Drugs, Benzodiazepine, Other Tranquilizers, PCP, and Other Drugs