

L 6165  
1.977

S. C. STATE LIBRARY

JAN 23 1978

STATE DOCUMENTS

**EIGHTH ANNUAL REPORT**

**THE SOUTH CAROLINA  
STATE LIBRARY**

**JULY 1, 1976-JUNE 30, 1977**



PRINTED UNDER THE DIRECTION OF THE  
STATE BUDGET AND CONTROL BOARD

**EIGHTH ANNUAL REPORT**

**THE SOUTH CAROLINA  
STATE LIBRARY**

**JULY 1, 1976-JUNE 30, 1977**



**PRINTED UNDER THE DIRECTION OF THE  
STATE BUDGET AND CONTROL BOARD**

## TABLE OF CONTENTS

LETTER OF TRANSMITTAL .....	3
LIBRARY BOARD AND STAFF .....	5
ORGANIZATION CHART AND DESCRIPTION .....	6
COMPARATIVE SUMMARY: 1943-1976 .....	7
Libraries and Librarians	
Bookstock, Circulation, Population	
Public Library Income	
<b>SOUTH CAROLINA STATE LIBRARY</b>	
Introduction .....	8
Reader Services .....	8
Legislative Reference Service .....	9
Reference and Interlibrary Loan Service .....	10
Government Documents .....	11
Technical Services .....	12
Field Services .....	13
State Aid to Public Libraries .....	14
Federal Aid to South Carolina Libraries .....	14
Film Program .....	15
Continuing Education .....	15
Library Service for the Disadvantaged .....	16
Institutional Library Services .....	17
Library Services to the Blind and Physically Handicapped .....	17
Public Library Construction .....	19
Library Legislation Enacted, 1977 .....	20
Interlibrary Loan Statistics .....	20
Publications of the South Carolina State Library .....	22
Public Library Bookstock, Circulation, and Support .....	23
Expenditures: State Funds .....	24
<b>PUBLIC, COLLEGE AND INSTITUTION LIBRARIES</b>	
Library Board Chairmen .....	29
Directory of South Carolina Public Libraries .....	32
Directory of South Carolina Colleges and Universities .....	34
Directory of State Institutional Libraries .....	36
<b>LIBRARY STATISTICS, 1975-76</b>	
South Carolina State Supported Institutions .....	39
South Carolina Colleges and Universities .....	37
South Carolina Public Libraries .....	41

LETTER OF TRANSMITTAL  
from  
THE SOUTH CAROLINA STATE LIBRARY

*To His Excellency, the Honorable James B. Edwards, Governor of South Carolina, and to The Honorable Members of the General Assembly of South Carolina:*

Dear Sirs:

We have the honor to transmit the report of the South Carolina State Library for the fiscal year ending June 30, 1977.

The fiscal pressures of the past year, and the corresponding reduction of funds for the State Library, made it difficult for the agency to function with its customary efficiency and effectiveness. However, skillful management, plus available federal funds, made it possible for the library to maintain the same level of service as the previous year. We are hopeful that the improved economy of the State will enable us to continue without the need to curtail any services.

The State Library is especially pleased with the County and Institutional libraries, and with the expanded services to the blind. Providing information to State government in greater quantity last year is another indication of the important, but often underrecognized role of the State Library.

Respectfully submitted,

CARLANNA L. HENDRICK,  
*Chairman*

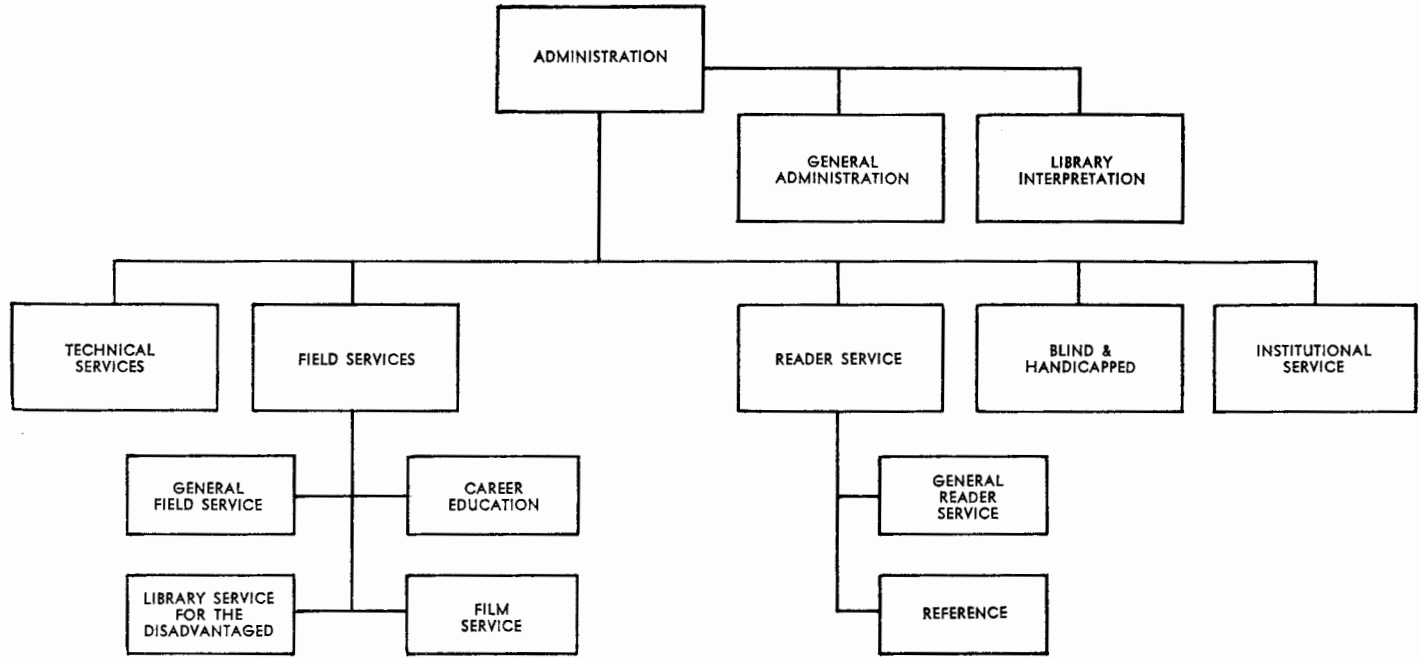
**SOUTH CAROLINA STATE LIBRARY  
BOARD MEMBERS**

*Chairman*—Dr. Carlanna Henderick, Florence  
*Secretary*—Dr. Hugh E. Vincent, Jr., Anderson  
Mr. Lester L. Bates, Jr., Columbia  
Mr. H. Carlisle Bean, Spartanburg  
Mrs. Mildred T. Foster, Gaffney  
Dr. G. Creighton Frampton, Charleston  
Mrs. Thelma Busbee, Cayce

**PROFESSIONAL STAFF**

*Librarian* ..... Estellene P. Walker  
*Deputy Librarian* ..... Betty E. Callaham  
*Director of Field Services* ..... Margie E. Herron  
*Technical Services Librarian* ..... Lois Barbare  
*Director of Reader Services* ..... John H. Landrum  
*Director of Library Services for the  
Blind and Physically Handicapped* ..... James B. Johnson, Jr.  
*Institutional Library Consultant* ..... Theresa C. Mills  
*Interlibrary Loan Librarian* ..... Lea Walsh  
*Documents Librarian* ..... Mary B. Toll  
*Acquisitions Librarian* ..... Mary H. White  
*Field Service Librarian* ..... Anna E. Horn  
*Field Service Librarian* ..... Aileen P. Law  
*Field Service Librarian* ..... Alice I. Nolte  
*Field Service Librarian for  
Audio-Visual Programs* ..... Ronald E. Anderson  
*Assistant Reference Librarian* ..... Anne K. Middleton  
*Assistant Reference Librarian* ..... Edna C. White  
*Assistant Reference Librarian* ..... Jan Pierce  
*Cataloger* ..... Francis S. Hite, Jr.  
*Library Assistant* ..... Frances K. Case  
*Business Manager* ..... Betty Q. Onley

# S. C. State Library



## PUBLIC LIBRARY STATISTICS

### LIBRARIES AND LIBRARIANS

	1943-44	1955-56*	1976-77
No. Regional Libraries .....	1	2	4
No. Counties in Regions .....	2	5	11
No. County Libraries .....	26	34	35
No. Municipal Libraries .....	27	23	1
No. of Counties with County-wide Service .....	27	38	46
No. Professional Librarians .....	26	46	136

### BOOKSTOCK, CIRCULATION, POPULATION

	1943-44	1955-56*	1976-77
Total Bookstock .....	620,550	1,473,132	3,605,538
Per Capita Bookstock .....	.3	.7	1.39
Total Circulation .....	3,726,222	5,318,682	7,582,269
Per Capita Circulation .....	1.96	2.5	2.93
Population .....	1,899,804	2,117,027	2,590,516
With Public Library Service .....	1,020,010	1,663,552	2,590,516

### PUBLIC LIBRARY INCOME

	1943-44	1955-56*	1944-56 % of Increase	1976-77	1956-77 % of increase
<b>Library Income:</b>					
SCSL Appropriation .....	\$ 15,000	\$101,638	578%	\$1,475,074	1,351%
State Aid .....	8,100	55,395	584%	906,681	1,537%
Per County .....	300	1,500		35¢ per capita	
Counties Participating .....	27	38		46	
<b>Local Support:</b>					
Total .....	259,374	845,723	226%	7,049,329	734%
Per Capita .....	13¢	40¢	208%	2.72	580%
<b>Federal Funds: LSCA .....</b>	-0-	-0-		511,533	
<b>Total Public Library Income:</b>					
All Sources .....	274,374	947,361	345%	9,602,278	914%
Per Capita .....	14¢	45¢	221%	3.71	824%

\* Beginning year for Library Services Act program (federal aid to public libraries).

**EIGHTH ANNUAL REPORT**  
**THE SOUTH CAROLINA STATE LIBRARY**

**July 1, 1976 - June 30, 1977**

The South Carolina State Library is charged with the responsibility for the development and coordination of a statewide program of library service. It is the central source of information for State government, State agencies and the public and institutional libraries of the state. The continued progress of the state, the improvement of its government, and the success of its programs depends upon accurate and up-to-date information. By law this agency's responsibilities include all the duties of a general state library and, in addition, the development of a program of statewide library service to meet the needs of the people of the state. To meet this responsibility and the specific responsibilities under the law, the State Library has established the following basic objectives: (1) To provide comprehensive library services and resources to the people of South Carolina giving every individual access to the informational resources of the state. (2) To furnish reference, loan, and research services to State government and State government agencies. The State Library serves government as a major information resource, research facility and as a link to other libraries and specialized data sources throughout the state and nation. In the following report each program designed to accomplish the basic objectives is described and a year's progress reported.

**READER SERVICES**

The Reader Services Department is responsible for providing assistance in the use of the reference and information sources of the State Library. Members of State government and State agencies make direct use of the library's resources. Citizens of the State have access to the library's services through their local public library.

## **REFERENCE AND INFORMATION SERVICE TO STATE GOVERNMENT**

A major reference function of the State Library is to provide research service and educational materials to support the information needs of State government and State agencies. As an information center, the State Library maintains a strong, well-balanced collection of books, periodicals, microforms, and Federal and State documents. This carefully selected collection, available for all State employees at a central location, reduces the need for duplication of expensive research materials within individual State agencies. A highly trained reference staff processes requests for information from State government and State agencies. To obtain information and materials not available locally, the State Library has access to other specialized collections through its participation in the Southeastern Library Network (SOLINET), a computerized bibliographic network of major research libraries throughout the country. Teletypewriter facilities are utilized to transmit information requests rapidly to major research collections.

The reference staff works closely with members of State government and State agency employees to inform them of the library's services. Formal library orientation sessions tailored to the specific information needs of individual departments were held during the past year. Since materials are constantly being added to the collection, the State Library publishes monthly a selective listing of recent materials entitled "New Resources for State Government and Agencies". This current awareness publication is distributed to key personnel in all State agencies and members of the General Assembly during statewide session.

Statistics on library use provide a measure of the effectiveness of the library's services. During 1976-77, State employees and members of State government borrowed 15,781 books, and the reference staff processed 5,156 reference questions.

### **LEGISLATIVE REFERENCE SERVICE**

The State Library maintains a special information service for members of the General Assembly during statewide session. An information specialist from the State Library is present in the State House to receive information requests from the General Assembly. Requests for research are telephoned to the State Library for prompt processing. In addition to serving legislators, the informa-

tion specialist works closely with standing committee researchers of the House and Senate to facilitate their use of the State Library's resources. During the past year a librarian from the State Library participated in a formal orientation of new members of the House of Representatives, explaining the State Library's collection and specialized services available for the General Assembly. In the past year, legislators or their researchers borrowed 375 books and submitted 280 reference questions. The State Library also provided over 1,600 pages of photocopy in response to reference questions.

### REFERENCE AND INTERLIBRARY SERVICE

The State Library is the central unit of the statewide interlibrary loan network designed to supplement and coordinate library resources in South Carolina. The Reference and Interlibrary Loan Service, drawing on the State Library's book collection and specialized sources, works through local libraries to supply South Carolinians with materials and information. Public and State institutional libraries have direct access to the State Library via INWATS; the utilization of telephone service allows interlibrary loan requests to be submitted and processed rapidly. A microfilm copy of the library's card catalog has been placed in thirty-five public libraries throughout South Carolina to enable librarians to quickly determine the holdings of the State Library. During the year, an annual supplement to the catalog was distributed.

To provide the highest level of service, the State Library makes use of other major collections within the State and the nation. The State Library has microfilmed the catalogs of Clemson University and the University of South Carolina to gain access to the resources of the State's two major university libraries. Access to the resources of the nation's libraries, required by more technical or comprehensive requests, is provided by holdings of several major union catalogs and by membership in the Southeastern Library Network (SOLINET). Through SOLINET, the State Library can use its on-line capability to draw on a computerized data base of over three million items and locate titles held by more than 1,100 libraries (including ten South Carolina libraries). Once the locations have been identified, requests for materials can be rapidly transmitted by teletypewriter.

As part of a continuing effort to encourage improvement of library service in South Carolina, the State Library sponsored a

series of reference training workshops. The individual design of these sessions was determined by responses to a needs assessment questionnaire distributed to all public libraries. The workshop series will continue into the coming year.

During 1976-77, the Reference and Interlibrary Loan Service received 4,452 In-WATS calls, answered 4,398 reference requests, and supplied 18,893 books and 11,171 pages of photocopy in reply to interlibrary loan requests.

### GOVERNMENT DOCUMENTS

The South Carolina State documents collection maintained by the State Library is the most comprehensive source for official publications of South Carolina State agencies and government. The existing collection has proved to be invaluable to researchers from this State and others. The documents provide up-to-date statistical information usually not available in other publications and serve as an excellent source for historical research on South Carolina. As new publications are issued, the State Library makes every effort to obtain copies to add to the collection. Since the collection has been in existence since 1970, older documents are added as they become available. During the year 2,442 publications were added to the collection bringing the total number of documents to 18,911. South Carolina is one of the few states which has not enacted State documents depository legislation requiring that all publications be sent to the State Library. Without such legislation, it is difficult to be certain that all current publications are received.

As the State documents collection becomes better known, State agencies are referring individuals to the State Library to use their publications no longer available for distribution, reducing additional publication costs and unnecessary distribution of State publications. The State Library annually compiles and publishes the *Checklist of South Carolina State Publications* which lists publications of State governmental departments received by the State Library during the fiscal year. During the year more than 500 copies of this publication were distributed.

## TECHNICAL SERVICES

The Technical Services Department coordinated the selection and ordered and processed all materials for the State Library collection, including large-type books and audio-visual materials. The bookstock is a one copy, non-fiction collection, except for South Carolina titles. It includes periodicals and newspapers in both paper and microfilm, and services such as ERIC in microfiche. There are separate collections of both Federal and State documents. Additions during the year are as follows:

<i>Item</i>	<i>Additions</i>	<i>Totals</i>
Books .....	7,810	136,367
State documents .....	2,442	18,911
Federal documents .....	5,524	19,011
Microfilm (reels) .....	879	8,070
Microfiche .....	22,024	111,094

The second supplement to the microfilm edition of the State Library's card catalog was prepared and prints sent to holders of the original edition, which included Area Reference Resource Centers and county and regional libraries. This was a cumulative supplement and included all cataloging since the original edition.

In order to facilitate work of the library, the department filmed the index to South Carolina items in The State and the Columbia Record newspapers. The index was prepared by the Richland County Public Library and covers the period from November 1, 1973 through December 31, 1975.

The State Library completed its second year as a member of the Southeastern Library Network (SOLINET) which gives it access by contract to the Ohio College Library Center (OCLC) data base. The cataloging section is connected by direct telephone lines to the data base and all cataloging is being done through the computer terminal, including the ordering of cards. The terminal is available to other departments to locate items needed for reference or interlibrary loan, since all cataloging done through the system shows location of materials.

During the year the department assumed responsibility for ordering and cataloging films for the Film Program. The cataloging records go into the data base, also.

## FIELD SERVICES

The field service program is carried out by a team of public library consultants who serve as liaison between the State Library and the county or regional systems to which they are assigned. They assist librarians and trustees in public libraries throughout the state to work out solutions to problems. Consultants provide ideas and information on such diverse topics as library planning, staff development, public relations, and budget preparations. This year much of the field service staff's time revolved around helping local librarians and their boards to deal with the many changes which are taking place in local government as a result of the new home rule legislation. Through advice on a one-to-one basis, in meetings, and through statewide workshops, the consultants have been effective in the development of public libraries and librarians around the state and in making librarians aware of South Carolina's library needs and ways to meet these needs. Among the responsibilities of the field service staff is supervision of State Aid to county and regional libraries and of local projects funded with Federal funds administered by the State Library. During the year the four field service librarians:

- worked with 39 systems serving all 46 counties of the state
- made 216 field trips
- attended 49 local library board meetings
- monitored library budgets including approximately \$6.3 million in local funds
- administered \$906,681 in State Aid grants to public libraries
- supervised LSCA projects providing approximately \$506,000 in grants-in-aid
- represented the State Library at local, state, and national conferences, conventions, workshops, professional associations, building dedications, civic organizations and other state and local meetings
- provided recruiting, placement, and training services for public librarians.

## **STATE AID TO PUBLIC LIBRARIES**

The program of State Aid to public libraries established in 1943 has been instrumental in the development of the county and regional libraries which now serve the entire state. State Aid is administered by the State Library under regulations which guarantee the wise use of State Aid funds to achieve a higher level of service for the people of the state. The regulations encourage public libraries to employ well qualified staff, develop book collections of high quality and administer the local library program economically and efficiently.

The wise use of both local and State Aid funds has enabled all libraries in the state to achieve a better level of service. Rising library costs and the increased demand for library and information service, point up the need for an increase in State Aid if libraries are to achieve their full potential of service to the people of the state.

## **FEDERAL AID TO SOUTH CAROLINA PUBLIC LIBRARIES**

A major program of the State Library is the administration of funds under the Library Services and Construction Act. The program began in 1956 with funds for the extension and improvement of public library service; in 1966 the program was expanded to include state institutional libraries. Federal funds are used in addition to and not instead of state and local funds. The objective of this program is to remedy the major deficiencies in public and institutional library service; great strides have been made towards realizing this goal. Countywide library service is now available in all of the state's forty-six counties and library service established in all of the state's institutions. Per capita ownership of books has risen dramatically and the number of professional librarians employed in the state in public and institutional libraries has risen to 150. With the aid of federal funds libraries in the state are better housed, better staffed and better stocked than ever before.

A major accomplishment of federal aid has been the coordination of library resources in the state to better serve the people of the state. An active library network provides for the interloan of resources, helps to eliminate expensive duplication of materials, and accomplishes its main objective of providing a good level of service to all South Carolinians whether they live in a remote rural area or in a central city.

In addition to funds under the Library Services and Construction Act, many libraries have been able to secure Federal Revenue Sharing funds at the local level which have been used for library building construction, purchase of bookmobiles, and the improvement of book and materials collections.

The unquestioned success of the program of federal aid to libraries in South Carolina is due largely to careful planning and a consistent program of delegating funds and responsibility to local county, regional and institutional libraries for the development of programs designed to meet local needs.

### **FILM PROGRAM**

Three years ago the State Library, in cooperation with the Instructional Services Center of the University of South Carolina, established a Film Program designed to strengthen and expand the resources of South Carolina public and institutional libraries. All of the films are 16mm informational films for adults and are used by public and institutional libraries to meet the informational needs of library patrons.

The film collection now numbers 656 films with 151 new films being added this year. A catalog of the film collection is provided for ease in using this service.

Forty-one public and institutional libraries participate in the State Library's Film Program. During the year libraries sponsored a total of 3,434 programs and reached an audience of 96,365. These figures represent a 100% increase in usage over the previous fiscal year.

The State Library conducted a two-day film workshop in Columbia in September. The session was designed to explore innovative ways of utilizing films in total library programs. Representatives from 36 of the 41 public and state institutional libraries participating in the State Library's film program attended the workshop.

### **CONTINUING EDUCATION FOR LIBRARIANS**

In an effort to improve personnel performance at all levels, the State Library supports a program of continuing education for the state's public and institutional librarians. Scholarship grants are provided for professional and non-professional librarians—and for public library trustees—to take academic courses in librarianship and to attend seminars and workshops. The scholarship program

was expanded in August, 1976 to include tuition grants to cover courses taken throughout the academic year. During 1976-77, scholarships were awarded to six pre-professional librarians from five county library systems and to one institutional librarian to take basic courses in the areas of reference, book selection, technical services, and children's literature.

The State Library staff were also given training opportunities. A member of the Field Services Staff attended a seminar entitled "Sharing Library Resources," held in Pittsburg in September 1976 and a conference in Detroit in June 1977 on library service for older Americans; the Director of Reader Services participated in a seminar on Executive Development for Library Administrators, held at Miami University in Ohio in August; and three members of the Technical Services Staff attended conferences on SOLINET. Other staff members attended workshops or meetings on films, documents, and service for the blind and physically handicapped.

The State Library in cooperation with the State's Personnel Division sponsored a workshop on Personnel Management for the directors of South Carolina's county and regional library systems. Thirty-five library directors and assistants participated in the two and one-half day program held in March which included discussions on interpersonal communication, classification and compensation, performance appraisal, and staff motivation.

### **LIBRARY SERVICE TO THE DISADVANTAGED**

The State Library, using federal funds under its administration, provides grants-in-aid to county and regional libraries to establish and expand service to urban and rural disadvantaged. This service now reaches over 40% of the target group, the 150,000 urban and rural South Carolinians with income below the poverty level. Twenty-five county and regional libraries participate in this project and receive grants-in-aid which provides special programs and materials to reach the disadvantaged in 32 counties. With grant funds libraries have employed necessary personnel, developed special book and audio-visual collections, provided transportation and purchased equipment needed in order to implement programs specially designed to meet local needs and conditions. Service to the disadvantaged has now become an integral part of the library program in all counties participating in the project.

## **INSTITUTIONAL LIBRARY SERVICE**

The State Library promotes the development and maintenance of quality library service for resident populations of State supported institutions. Assisted by grants-in-aid and consultant services, institutional libraries provide materials and services especially selected for or adapted to the rehabilitation, education, and recreation of residents as part of each institution's total care program.

Of the seventeen institutions served by this project in FY 77, thirteen employ qualified librarians and offer full-service library programs. Two adult correctional libraries provide a wide range of services and materials; other adult correctional facilities through the state receive regularly scheduled visits from the Division's bookmobile. Two juvenile correctional schools have excellent libraries which meet both the educational and recreational needs of their students. Libraries in the State's mental health institutions and in the three centers for the mentally retarded work within the therapeutic and educational programs planned for residents' rehabilitation to offer a variety of specialized materials and programs.

Collections of appropriate paperback books are selected and purchased for three alcohol and drug addictions centers which are too small to supply standard library service for their residents. Through a contract between the State Library and the Florence County Library, both books and the part-time services of a librarian are provided to the South Carolina Crippled Children's Convalescent Center.

## **LIBRARY SERVICES TO THE BLIND AND PHYSICALLY HANDICAPPED**

The South Carolina State Library, Division for the Blind and Physically Handicapped provides free library services to those individuals unable to read conventional print. This service, which consists of books and current magazines in recorded form (disc and tape), braille, and inlarge print, is administered by the South Carolina State Library in cooperation with the Library of Congress. Most readers read recorded books and for them the library supplies a sound reproducer (either a talking book machine or a cassette playback machine). Braille service is provided under a contract with the North Carolina State Library. The service, including postage costs, is free to the readers.

As of June 30, 1977, the library had 4,251 registered readers, an increase of 737 over 1976. The library served a total of 4,855 people during FY 1977. A total of 96,247 books and magazines were borrowed. Many readers received magazines sent directly to their homes by the Library of Congress which do not appear in these figures. A total of 5,062 books were added to the collection.

The project to record South Carolina books continues. An agreement has been made with the University of South Carolina Department of Theatre and Speech and the Department of Media Arts to produce the recordings. The cassette book collection has been improved by the acquisition of master tape copies of popular talking books originally issued on disc.

Service is chiefly a mail order service from Columbia. A quarterly large print newsletter and an In-WATS telephone line serve as major avenues of communication. Each new reader is contacted by their county library to determine if all equipment sent to them arrived safely and if the reader understands how the program operates. In five counties, Anderson, Charleston, Greenville, Richland and Spartanburg, the State Library maintains browsing collections of several hundred recorded books in the county library.

**LSCA LIBRARY CONSTRUCTION (TITLE II)**  
**1976 - 77**

Library	Location	Completed	LSCA Grant	Local	ARDA & RS Grants
Abbeville County Headquarters— Abbeville-Greenwood Reg. Lib. ....	Abbeville .....	Apr. 14, 1969 .....	\$ 38,823	\$ 20,000	
Anderson County Lib. ....	Anderson .....	Nov. 1, 1971 .....	100,000	490,200	\$ 79,800 (ARDA)
Bamberg County Lib.—County Headquarters ABBE Reg. Lib. ....	Bamberg .....	Sept. 3, 1969 .....	50,000	30,042	
Berkeley County Lib. ....	Moncks Corner .....	Oct. 18, 1970 .....	75,000	100,000	
Charleston County Lib. Dart Branch .....	Charleston .....	Aug. 1, 1968 .....	50,000	121,800	
Cherokee County Lib. ....	Gaffney .....	July 31, 1972 .....	75,000	250,100	51,100 (ARDA)
Fairfield County Lib. ....	Winnsboro .....	May 16, 1977 .....	50,000	25,753	193,369 (RS)
Florence County Lib. ....	Florence .....	Authorized .....	100,000	59,412	540,588 (RS)
Greenville County Lib. ....	Greenville .....	Mar. 25, 1970 .....	250,000	1,900,702	250,000 (ARDA)
Greenwood County Headquarters .....	Greenwood .....	Nov. 1, 1976 .....	122,136	399,268	45,000 (RS)
Kershaw County Lib. ....	Camden .....	May 14, 1973 .....	75,000	336,113	
Lancaster County Lib. ....	Lancaster .....	Aug. 21, 1970 .....	75,000	227,632	
Laurens County Lib. Clinton Branch .....	Clinton .....	June 1, 1974 .....	50,000	180,000	
Marion County Lib. ....	Marion .....	Feb. 27, 1976 .....	75,000	105,000	
Newberry-Saluda Reg. Lib. ....	Newberry .....	Sept. 15, 1968 .....	50,000	44,000	
Oconee County Lib. Seneca Branch .....	Seneca .....	July 5, 1968 .....	50,000	35,640	13,860 (ARDA)
Pickens County Lib. ....	Easley .....	Jan. 13, 1970 .....	75,000	51,200	30,000 (ARDA)
Richland County Public Lib. St. Andrews Branch .....	Near Columbia .....	Feb. 2, 1968 .....	50,000	42,938	
S. C. State Library .....	Columbia .....	Nov. 14, 1969 .....	946,192	752,857	
Spartanburg County Lib. Landrum Branch .....	Landrum .....	July 22, 1969 .....	50,000	36,238	
Sumter County Lib. ....	Sumter .....	Mar. 19, 1968 .....	100,000	267,343	
York County Library York Branch .....	York .....	Mar. 15, 1968 .....	50,000	32,442	
York County Library Fort Mill Branch .....	Fort Mill .....	May 28, 1972 .....	50,000	81,950	
			\$2,607,151	\$5,770,060	\$1,010,348

### **LIBRARY LEGISLATION ENACTED, 1977**

- S. C. Acts and Joint Resolutions, 1977; No. 313. An act to amend Act 378 of 1967, as amended, relating to the Clarendon County Library Commission, so as to increase the size of the Commission to ten members.
- S. C. Acts and Joint Resolutions, 1977; No. 389. An act to amend Section 27-100, Code of Laws of South Carolina, 1962, as amended, relating to the fees to be paid to the Clerk of Court of Williamsburg County, so as to further provide for such fees and to provide that fifty cents of the cost of recording each deed and mortgage in the county shall be used for the purpose of maintaining the Williamsburg County Law Library.

**INTERLIBRARY LOAN REQUESTS  
FOR FISCAL YEAR 1976-77**

	Total Requests Received	Reference Requests Received	Books Loaned	Photocopies Sent
<b>Regional Libraries:</b>				
Abbeville-Greenwood .....	140	43	163	81
Aiken-Bamberg-Barnwell-Edgefield .....	441	54	428	128
Allendale-Hampton-Jasper .....	1,068	400	1,459	1,412
Newberry-Saluda .....	95	19	100	22
<b>County Libraries 100,000 and Over:</b>				
Anderson County Library .....	728	173	680	248
Charleston County Library .....	538	85	378	491
Greenville County Library .....	863	70	593	445
Richland County Library .....	481	481	888	104
Spartanburg County Library .....	688	150	569	361
<b>County Libraries 50,000 to 100,000:</b>				
Beaufort County Library .....	423	63	398	224
Berkeley County Library .....	250	38	268	55
Darlington County Library .....	546	15	464	500
Florence County Library .....	826	135	706	152
Horry County Library .....	196	64	185	143
Lexington County Library .....	56	5	51	0
Orangeburg County Library .....	475	120	480	308
Pickens County Library .....	400	154	503	210
Sumter County Library .....	345	95	335	304
York County Library .....	105	9	92	21
<b>County Libraries 25,000 to 50,000:</b>				
Cherokee County Library .....	642	121	620	340
Chester County Library .....	198	87	272	151
Chesterfield County Library .....	1,144	580	1,837	1,131
Colleton County Library .....	294	94	376	302
Dillon County Library .....	378	107	414	146
Dorchester County Library .....	387	150	573	379
Georgetown County Library .....	470	101	475	302
Kershaw County Library .....	547	161	630	196
Lancaster County Library .....	305	38	311	200
Laurens County Library .....	743	191	807	360
Marion County Library .....	113	10	108	47
Marlboro County Library .....	315	36	286	205
Oconee County Library .....	260	101	284	233
Union County Library .....	111	11	110	2
Williamsburg County Library .....	212	54	257	156
<b>County Libraries 25,000 and Under:</b>				
Calhoun County Library .....	580	62	641	402
Fairfield County Library .....	424	165	581	328
Lee County Library .....	99	51	152	132
McCormick County Library .....	138	44	171	62
<b>Municipal and Township Libraries:</b>				
Chapin Memorial Library .....	34	2	29	0
Interlibrary Loans to State Institutions .....	472	29	538	231
Interlibrary Loans to Other Libraries .....	887	30	681	422
Interlibrary Audio-Visual Loans .....			1,278	
<b>SERVICES FOR STATE AGENCIES AND</b>				
STATE GOVERNMENT .....	5,156	5,156	15,781	NA
<b>TOTALS</b> .....	<b>22,573</b>	<b>9,554</b>	<b>35,952</b>	<b>10,936</b>

**SOUTH CAROLINA STATE LIBRARY  
PUBLICATIONS, 1976-77**

- Annual program, Library Services and Construction Act, 1976. iv.  
(unpaged)
- Catalog of filmstrips and recordings, South Carolina State Library,  
1976. 41, 26p.
- Checklist of South Carolina State publications, 1975/76. September  
1976. 61p.
- Large print books: an annotated list. 1977 supplement. 36p.
- New resources for State government and agencies. v. 6, no. 10—v.  
7, no. 9 (July 1976—June 1977)
- News about library services for the blind and physically handi-  
capped. v. 2, nos. 1—4 (July 1976—Apr. 1977)
- News for South Carolina libraries. v. 8, no. 7—v. 9, no. 6 (July  
1976—June 1977).
- Report, 1975/76. 36, [2] p.
- South Carolina State program for library development, 1976-1981,  
supplement. 1976. 37p.

**PUBLIC LIBRARY BOOKSTOCK  
CIRCULATION AND SUPPORT BY COUNTY**

July 1, 1976 - June 30, 1977

County	Per Capita Bookstock	Per Capita Circulation	Total Per Capita Support	Per Capita Support Local Only
Abbeville (see Greenwood)				
Aiken*	1.14	3.50	2.40	1.79
Allendale**	1.44	1.20	1.80	1.23
Anderson	1.31	3.50	3.04	2.58
Bamberg (see Aiken)				
Barnwell (see Aiken)				
Beaufort	1.34	2.11	3.32	2.72
Berkeley	0.86	2.24	2.43	1.56
Calhoun	2.95	3.31	3.61	2.78
Charleston	1.49	2.89	3.79	3.22
Cherokee	1.82	3.32	3.58	3.08
Chester	1.42	3.03	2.73	2.26
Chesterfield	0.99	2.10	2.17	1.42
Clarendon***			2.13	1.78
Colleton	1.92	3.26	2.68	2.19
Darlington	2.11	3.05	3.63	2.93
Dillon	1.77	1.90	2.23	1.45
Dorchester	0.89	1.15	2.07	1.63
Edgefield (see Aiken)				
Fairfield	1.48	1.41	2.39	1.89
Florence	1.17	2.56	3.44	2.24
Georgetown	1.29	1.60	3.64	3.08
Greenville	1.65	4.59	8.71	8.10
Greenwood****	1.62	3.26	2.65	2.10
Hampton (see Allendale)				
Horry	1.57	4.05	3.10	2.55
Jasper (see Allendale)				
Kershaw	2.00	3.36	3.19	2.69
Lancaster	1.22	2.82	3.45	2.93
Laurens	1.60	2.64	2.94	2.45
Lee	1.11	1.57	1.29	0.94*
Lexington	1.37	2.44	2.15	1.63
Marion	1.06	2.56	4.43	3.90
Marlborough	1.15	2.69	1.72	1.24
McCormick	0.97	0.66	1.37	0.73*
Newberry*****	1.33	2.89	2.21	1.59
Oconee	1.81	3.01	2.59	2.07
Orangeburg	0.70	2.15	1.93	1.48
Pickens	1.02	2.71	2.98	2.40
Richland	1.30	3.63	5.85	5.28
Saluda (see Newberry)				
Spartanburg	1.18	2.43	2.84	2.31
Sumter	0.94	2.23	2.59	2.05
Union	0.92	1.14	2.14	1.37
Williamsburg	0.55	0.54	0.87	0.52
York	1.34	2.76	3.40	2.98

- \* Includes Bamberg, Barnwell and Edgefield counties as part of a regional library.
  - \*\* Includes Hampton and Jasper counties as part of a regional library.
  - \*\*\* Served by Sumter County.
  - \*\*\*\* Includes Abbeville.
  - \*\*\*\*\* Includes Saluda County as part of a regional library.
- Since methods of counting circulation vary among counties, circulation figures should not be used for comparison.

**SOUTH CAROLINA STATE LIBRARY,  
STATE EXPENDITURES**

July 1, 1976 - June 30, 1977

Salaries and Wages .....	\$ 440,501.53
Freight, Express and Deliveries .....	63.00
Travel .....	5,213.80
Telegraph and Telephone .....	8,633.82
Repairs .....	2,624.26
Printing, Binding and Advertising .....	4,556.79
Water, Heat, Light and Power .....	2,696.43
Other Contractual Services .....	7,876.56
Professional and Other Fees .....	28.36
Office Supplies .....	6,997.60
Motor Vehicle Supplies .....	2,700.32
Postage .....	3,428.00
Rents—Non State-Owned Real Property .....	4,680.00
Rents—State-Owned Real Property .....	28,324.35
Rents—Equipment .....	2,320.00
Rents—Other .....	738.00
Insurance .....	1,309.71
Contributions and Dues (Dues) .....	766.00
Office Equipment .....	2,000.00
Educational Equipment (Books for reference collection and for loan to individual communities) .....	27,057.40
State Aid .....	906,680.60
Distributions to Subdivisions .....	15,877.00
<b>TOTAL EXPENDITURES</b> .....	<b>\$ 1,475,073.53</b>
Special Account—Books and Equipment .....	\$ 72,329.75
Special Account—Construction of Library .....	76,690.72
<b>TOTAL EXPENDITURES</b> .....	<b>\$ 149,020.47</b>

**SOUTH CAROLINA STATE LIBRARY,  
FEDERAL EXPENDITURES**

**July 1, 1976 - June 30, 1977**

**1977 Funds**

**TITLE I: LIBRARY SERVICES:**

Project I-A—General Administration:	
Travel .....	\$ 174.19
Printing, Binding and Advertising .....	285.43
Office Supplies .....	4.05
	<hr/>
Total Project I-A .....	\$ 463.67
	<hr/>
Project II-A—General Operations:	
Office Supplies .....	\$ -112.30
	<hr/>
Project II-B—Strengthening the State Library	
Agency .....	\$ 15,870.42
	<hr/>
Project III-A—Field Services .....	\$ -1,390.00
	<hr/>
Project III-C—3 Metropolitan Libraries: Resource	
Centers .....	\$ 25,835.95
	<hr/>
Project III-D—Service to the Disadvantaged .....	\$ 66,113.49
	<hr/>
Project IV-A—Library Development .....	\$ 91,783.08
	<hr/>
Project V-A—Book Collection Improvement	
Project .....	\$ 42,753.58
	<hr/>
Project V-D—Periodical Project .....	\$ 26,960.26
	<hr/>
Project VI-A—Institutional Library Services .....	\$ 2,503.23
	<hr/>
Project VII—Film Program .....	\$ 3,499.22
	<hr/>
Project VIII—Service to Persons of Limited English	
Speaking Ability .....	\$ 4,476.94
	<hr/>
<b>TOTAL EXPENDITURES—TITLE I (1977 Funds)</b>	<b>\$ 278,757.54</b>

## TQ 76 Funds

### TITLE I: LIBRARY SERVICES:

Project III-B-3—Career Education: Workshops	\$ 1,292.39
Project III-D—Service for the Disadvantaged	\$ 38,500.00
Project IV-A—Library Development	\$ 113,512.60
Project VI-B—Service to Blind and Physically Handicapped	\$ 5,911.51

TOTAL EXPENDITURES—TITLE I (TQ 76 Funds) \$ 159,216.50

### TITLE III: INTERLIBRARY COOPERATION:

Project III—Area Reference Resource Centers	\$ 3,000.00
Project V—Interlibrary Loan Network	\$ 7,038.42

TOTAL EXPENDITURES—TITLE III (TQ 76 Funds) \$ 10,038.42

TOTAL EXPENDITURES—ALL TITLES (TQ 76 Funds) \$ 169,254.92

## 1976 Funds

### TITLE I: LIBRARY SERVICES:

#### Project I-A—General Administration:

Travel	\$ 62.91
Postage	500.00
Office Equipment	1,047.91
Total Project I-A	\$ 1,610.82

Project II-A—General Operations:	
Salaries .....	\$ 2,774.89
Freight, Express and Deliveries .....	1.85
Travel .....	60.02
Repairs .....	534.44
Printing, Binding and Advertising .....	645.49
Office Supplies .....	683.75
Postage .....	500.00
Rents—Equipment .....	46.65
Rents—Other .....	47.00
Employer Contributions—Health Insurance .....	108.50
Employer Contributions—Retirement .....	128.23
<hr/>	
Total Project II-A .....	\$ 5,530.82
<hr/>	
Project II-B—Strengthening the State Library	
Agency .....	\$ 65,348.17
<hr/>	
Project III-A—Field Services .....	\$ 9,415.00
<hr/>	
Project III-B-3—Career Education:Workshops .....	\$ 1,500.00
<hr/>	
Project III-D—Service to the Disadvantaged .....	\$ 9,963.67
<hr/>	
Project IV-A—Library Development .....	\$ 72,925.56
<hr/>	
Project VI-B—Service to Blind and Physically	
Handicapped .....	\$ 9,662.09
<hr/>	
Project VII—Film Program .....	\$ 76,538.42
<hr/>	
Project VIII—Service to Persons of Limited English	
Speaking Ability .....	\$ 691.62
<hr/>	
TOTAL EXPENDITURES—TITLE I (1976 Funds) \$	253,186.17

<b>TITLE III: INTERLIBRARY COOPERATION:</b>	
Project I—Communications Network .....	\$ 2,082.96
Project II—Intercommunication .....	\$ 1,873.57
Project III—Area Reference Resource Centers .....	\$ 13,541.50
Project V—Interlibrary Loan Network .....	\$ 6,858.54
Project VI—Training for Interlibrary Cooperation	\$ 1,895.00
Project VII—Solinet .....	\$ 4,003.73
<b>TOTAL EXPENDITURES—TITLE III (1976 Funds) .....</b>	<b>\$ 30,255.30</b>
<b>TOTAL EXPENDITURES—ALL TITLES (1976 Funds) .....</b>	<b>\$ 283,441.47</b>
<b>TITLE II: PUBLIC LIBRARY BUILDING CONSTRUCTION .....</b>	<b>\$ 70,380.00</b>
<b>TITLE IV-A: STATE INSTITUTIONAL LIBRARY SERVICES .....</b>	<b>\$ 5,635.58</b>
<b>TOTAL EXPENDITURES—ALL TITLES—ALL FUNDS .....</b>	<b>\$ 807,469.51</b>

## LIBRARY BOARD CHAIRMEN

Library	Chairman	Address
South Carolina State Library	Dr. Carlanna Hendrick	—514 Iris Dr., Florence, S. C. 29501
Abbeville County Library	Mr. Fletcher W. Ferguson	—101 Pine-wood Circle, Abbeville, S. C. 29620
Abbeville-Greenwood Regional Library	Mr. Edgar W. Davis, Jr.	—P. O. Box 1138, Greenwood, S. C. 29646
Aiken-Bamberg-Barnwell-Edgefield Regional Library	Mrs. John F. McLaughlin, Jr.—Ehrhardt	S. C. 29081
Aiken County Library	Mr. Otis L. Baughman, Jr.—Wagener	S. C. 29164
Allendale-Hampton-Jasper Regional Library	Mrs. Charles A. Laffitte, Jr.	—Box 163, Hampton, S. C. 29924
Aiken County Library	Mrs. T. O. Lawton, Sr.—RFD No. 1, Fairfax	S. C. 29827
Anderson County Library	Mr. Harold V. Sullivan	—212 First Federal Building, N. Main St., Anderson, S. C. 29621
Bamberg County Library	Mrs. H. G. Hiers	—Box 186, Bamberg, S. C. 29003
Barnwell County Library	Mrs. W. C. Buist	—Blackville, S. C. 29817
Beaufort County Library	Mr. Rivers L. Varn	—207 Laurens St., Beaufort, S. C. 29902
Berkeley County Library	Mr. J. Russell Cross	—Cross, S. C. 29436
Calhoun County Library	Mrs. Frank M. Wannamaker	—Raysor Drive, St. Matthews, S. C. 29135
Chapin Memorial Library	Dr. Carl E. Compton	—503 Fourth Ave., N. Myrtle Beach, S. C. 29577
Charleston County Library	Mr. Zacharia Gellman	—49 Broad Street, Charleston, S. C. 29401
Cherokee County Library	Mrs. Bright G. Parker	—1010 S. Petty St., Gaffney, S. C. 29340
Chester County Library	Mr. Milburn Richburg	—112 Marquis St., Chester, S. C. 29706
Chesterfield County Library	Mrs. Caroline Goforth	—103 N. Jordan, Bennettsville, S. C. 29512

## LIBRARY BOARD CHAIRMEN—Continued

Library	Chairman	Address
Clarendon County Library—	Mrs. James Hugh McFaddin—	400 Old Georgetown Rd., Manning, S. C. 29102
Colleton County Library—	Mrs. John I. Rogers—	Rt. No. 4, Walterboro, S. C. 29488
Darlington County Library—	Dr. William R. Blakeney—	111 Golf Course Rd., Hartsville, S. C. 29550
Dillon County Library—	Mrs. Joe L. Powell—	Box 218, Latta, S. C. 29565
Dorchester County Library—	Mr. George H. Seago, Jr.—	Box 1196, Summerville, S. C. 29483
Edgefield County Library—	Mrs. B. L. Mims, Jr.—	P. O. Box 98, Edgefield, S. C. 29824
Fairfield County Library—	Mr. Robert J. Fickling—	36 McKay Circle, Winnsboro, S. C. 29180
Florence County Library—	Mrs. William S. Dowis, Jr.—	322 W. Pine St., Florence, S. C. 29501
Georgetown County Library—	Mr. Allen D. Read—	Rt. 4, Box W7, Windsor Plantation, Georgetown, S. C. 29440
Greenville County Library—	Mr. Eugene Gibson—	Greer Federal Savings and Loan, Greer, S. C. 29651
Greenwood City and County Public Library—	Dr. William T. Rice—	Forest Hills, Greenwood, S. C. 29646
Hampton County Library—	Mrs. Charles A. Laffitte, Jr.—	Box 163, Hampton, S. C. 29924
Horry County Library—	Mr. W. Burroughs Woodward—	Rt. 5, Box 98-AB, Conway, S. C. 29526
Jasper County Library—	Mr. Henry Simmons, Sr.—	Rt. 1, Box 45, Hardeeville, S. C. 29927
Kershaw County Library—	Mr. John W. Hash—	500 Chestnut Street, Camden, S. C. 29020
Lancaster County Library—	Miss Elizabeth Wilson—	Box 839, Lancaster, S. C. 29720
Laurens County Library—	Mrs. Georgia B. Thomason—	405 S. Broad St., Clinton, S. C. 29325
Lee County Public Library—	Mrs. Robert S. Latimer, Jr.—	311 Cousar, Bishopville, S. C. 29010

## LIBRARY BOARD CHAIRMEN—Continued

Library	Chairman	Address
Lexington County Circulating Library	Mrs. Colene S. Hook	114 N. Lake Dr., Lexington, S. C. 29072
McCormick County Library	Mrs. John A. McAllister	P. O. Box 531, Mt. Carmel, S. C. 29840
Marion County Library	Dr. Thomas B. Clark	710 Northside Ave., Marion, S. C. 29571
Marlboro County Public Library	Mr. Thomas C. Bristow	Gibson Highway, McColl, S. C. 29570
Newberry-Saluda Regional Library	Mr. Earl Bergen	2221 Wells Park Dr., Newberry, S. C. 29108
Oconee County Library	Mrs. Mildred Spearman	210 Doyle St., Westminster, S. C. 29693
Orangeburg County Free Library	Mrs. James H. Gressette	Columbia Road, Orangeburg, S. C. 29115
Pickens County Library	Dr. Henry G. Lefort	Box 65, Clemson, S. C. 29631
Richland County Public Library	Mrs. Jean Galloway Bissell	P. O. Box 168, Columbia, S. C. 29201
Spartanburg County Library	Mrs. John Davis Smith	331 Connecticut Ave., Spartanburg, S. C. 29302
Sumter County Library	Mr. Robert O. Purdy	526 Mattison Ave., Sumter, S. C. 29150
Union Carnegie Library	Dr. H. L. Sutherland	504 Perrin Ave., Union, S. C. 29379
Williamsburg County Library	Mr. Maurice Joye	Greeleyville, S. C. 29056
York County Library	Mr. Wallace D. Vaughn, Jr.	117 E. Close St., Fort Mill, S. C. 29715

## DIRECTORY OF SOUTH CAROLINA PUBLIC LIBRARIES

LIBRARY	ADDRESS OF HEADQUARTERS	ZIP	PHONE	CHIEF LIBRARIAN
Abbeville-Greenwood Regional Library	North Main St., Greenwood	29648	223-4515	Mrs. Harold McCord, Director
Abbeville County Library	Main and Cherry Sts., Abbeville	29620	459-4009	Mrs. Doris K. Hughes
Aiken-Bamberg-Barnwell-Edgefield Reg. Library	P. O. Box 909, Aiken	29801	648-8961	Josephine Crouch, Director
Aiken County Public Library	224 Laurens St., S.W., Aiken	29801	649-2352	Mrs. Maurine Lackey
Allendale-Hampton-Jasper Reg. Library	435 Newberry St., S.W., Aiken	29810	584-2371	Helen C. DeWitt, Director
Anderson County Library	War Memorial Bldg., Allendale	29621	225-1429	Mr. Carl Stone, Director
Bamberg County Library	202 E. Greenville St., Anderson	29003	245-4280	Mrs. Herman Rice
Barnwell County Library	North St., Bamberg	29812	524-4444	Mrs. William Green Jenkins
Beaufort County Library	Hagood Ave., Barnwell	29902	524-5646	Julie Zachowski
Berkeley County Library	P. O. Box 1048, Beaufort	29461	899-2218	Mrs. Patricia Jackson
Calhoun County Public Library	100 Library St., Moncks Corner	29135	874-3389	Mrs. Shirley W. Boone
Chapin Memorial Library	208 N. Harry C. Raysor Dr., St. Matthews	29577	448-3338	Emily Sanders, Director
Charleston County Library	14th Ave., N., Myrtle Beach	29403	723-1645	Mr. David A. Lyon, IV, Director
Cherokee County Public Library	404 King St., Charleston	29340	489-4381	Mr. William F. Kay
Chester County Free Public Library	Johnson and Rutledge Sts., Gaffney	29706	377-8145	Norris Wootton
Chesterfield County Library	Main and Wylie Sts., Chester	29709	623-7489	Mrs. Alanna T. Bair
Clarendon County Public Library	211 Brooks St., Manning	29102		
Colleton County Memorial Library	P. O. Box 251, Manning	29102		
Darlington County Library	600 Hampton St., Walterboro	29488	549-5621	Mrs. Lila Smoak
Dillon County Library	127 N. Main St., Darlington	29532	393-5864	Mr. Warren Lloyd
Dorchester County Library	Latta	29565	752-5389	
Edgefield County Library	St. George	29477	563-2331	Mrs. E. O. McMahan, Jr.
Fairfield County Library	P. O. Box 68, Edgefield	29824	637-6347	Mrs. M. H. Mims
Florence County Library	Garden & Washington Sts., Winnsboro	29180	635-4971	Mrs. Sarah D. McMaster
Georgetown County Memorial Library	319 S. Irby St., Florence	29501	662-8424	Mrs. Marguerite G. Thompson, Director
Greenville County Library	Drawer D, Georgetown	29440	546-4220	Mrs. Barbara P. Nickel
Horry County Memorial Library	Highmarket St., Georgetown	29601	242-5000	Mr. Larry Nix
Kershaw County Library	300 College St., Greenville	29526	248-4898	Mrs. Catherine Lewis
Lancaster County Library	1008 Fifth Ave., Conway	29020	432-5183	Mr. Alan F. Rost
Laurens County Library	P. O. Box 874, Camden	29720	285-1502	Mrs. Ann Burton Henderson
Lee County Public Library	313 S. White St., Lancaster	29360	984-0596	Mr. William C. Cooper, Director
Lexington County Circulating Library	321 S. Harper St., Laurens	29010	484-5921	Carol Lynn Kirkley
McCormick County Library	Bishopville	29006	532-9223	Mrs. Jane Griffin, Director
Marion County Library	Box 683, McCormick	29835	465-2821	Mrs. Dianne Batchelor
Marlboro County Public Library	101 E. Court St., Marion	29571	423-2244	Mrs. Cynthia Phelps
Newberry-Saluda Regional Library	Bennettsville	29512	479-6201	Mrs. T. Fraser James
Oconee County Library	1300 Friend St., Newberry	29108	276-0854	Catherine Slaughter
	301 S. Spring St., Walhalla	29691	638-5837	Louise L. Marcum

LIBRARY	ADDRESS OF HEADQUARTERS	ZIP	PHONE	CHIEF LIBRARIAN
Orangeburg County Free Library	P. O. Box 1367, Orangeburg	29115	534-1429	Mrs. Beverly R. Ulmer
Pickens County Library	110 W. First Ave., Easley	29640	859-9679	Mr. James Swan
Richland County Public Library	1400 Sumter St., Columbia	29201	799-9084	Mrs. George King, Director
Spartanburg County Library	P. O. Box 2409, Spartanburg	29302	585-2441	Mr. Dennis L. Bruce, Director
Sumter County Library	333 S. Pine St., Spartanburg	29302		
Timrod Library	111 Harvin St., Sumter	29150	773-7273	Mr. Chapman J. Milling, Jr.
Union Carnegie Library	Summerville	29483		Mrs. Joan Swanson
Williamsburg County Library	300 E. South St., Union	29379	427-7140	Mr. Edward Burwell
York County Library	135 Hampton Ave., Kingstree	29556	354-9486	Mrs. Shirley Street
	P. O. Box 32, Rock Hill	29730	328-8402	Mr. Joseph Garcia, Director
	325 S. Oakland Ave., Rock Hill	29730		
South Carolina State Library	1500 Senate Street, Columbia	29201	758-3181	Estellene P. Walker, Librarian
	P. O. Box 11469, Columbia	29211	758-3181	Betty E. Callaham, Deputy Librarian
			758-3181	Margie E. Herron, Director of Field Services
			758-2726	James B. Johnson, Jr., Director, Library Service for Handicapped
			758-3138	Lois Barbare, Technical Services Librarian
			758-3138	John H. Landrum, Director of Reader Services
			758-3138	Mary B. Toll, Documents Librarian
			758-3181	Mrs. Betty Q. Onley, Business Manager

## DIRECTORY OF SOUTH CAROLINA COLLEGES AND UNIVERSITIES

Name of Institution	Address	Zip	Phone	Ext.	Librarian
<b>SENIOR COLLEGES</b>					
Allen University	1530 Harden St., Columbia	29204	254-4165	355	Dorothy J. Johnson
Baptist College of Charleston	P. O. Box 10087, Charleston	29411	797-4718		Thelma Elkins
Benedict College	Blanding & Harden, Columbia	29204	256-4220		Mrs. May S. Johnson
Bob Jones University	Greenville	29614	242-5100	296	L. Gene Elliott
Central Wesleyan College	Central	29630	639-2343	42	Mrs. Martha S. Evatt
Citadel	Charleston	29409	577-6900	2116	Col. James M. Hillard
Clafin College	College Ave., Orangeburg	29115	534-2710	56	Mrs. Louisa S. Robinson
Clemson University	Clemson	29631	656-3026		J. W. Gordon Gourlay
Coastal Carolina	Route 6, Conway	29526	347-3161		D. Lynne Smith
Coker College	Hartsville	29550	332-1381	494	Lloyd J. Putzey
College of Charleston	66 George St., Charleston	29401	772-0181	2030	T. Ellis Hodgkin
Columbia Bible College	P. O. Box 3122, Columbia	29203	754-4100	277	William Fraher Abernathy
Columbia College	Columbia	29203	786-3878		Helen J. Jordan
Converse College	E. Main St., Spartanburg	29301	585-6421	260	James G. Harrison, Jr.
Erskine College	Due West	29639	379-8898		John H. Wilde
Francis Marion College	Florence	29501	669-4121	321	J. Mitchell Reames
Furman University	Greenville	29613	294-2191		Dr. Robert C. Tucker
Lander College	Greenwood	29646	229-8365		Ann T. Hare
Limestone College	Gaffney	29340	489-7151	179	Nina N. Lyon
Lutheran Theol. Southern Seminary	4201 Main St., Columbia	29203	786-6839		Dr. W. Richard Fritz
Medical University of S. C.	171 Ashley Ave., Charleston	29403	792-2374		Warren A. Sawyer
Morris College	N. Main St., Sumter	29150	775-9371	216	Clara B. Gordon
Newberry College	Newberry	29108	276-5010	300	John E. Sukovich
Presbyterian College	Clinton	29325	833-2820	214	Dr. Lennart Pearson
South Carolina State College	College Ave., Orangeburg	29117	536-7045		Barbara J. Williams
University of South Carolina	Columbia	29208	777-3142		Kenneth E. Toombs
USC-Aiken	171 Univ. Parkway, Aiken	29801	648-6851	65	Mrs. Frankie H. Cubbedge
USC-Spartanburg	Spartanburg	29303	578-1800	410	Robert A. Perrin
Voorhees College	Denmark	29042	793-3346	261	Mrs. C. M. Norman
Winthrop College	Rock Hill	29733	323-2131		Shirley M. Tarlton
Wofford College	Spartanburg	29301	585-4821	396	Frank J. Anderson

### JUNIOR COLLEGES

Anderson College	316 Boulevard, Anderson	29621	226-6181	264	Annie Frances Blackman
Clinton Junior College	Rock Hill	29730	327-7402		Mrs. H. B. Wilkes
Friendship Junior College	Box 10750, Rock Hill	29730	327-1186		Kailash C. Patel
North Greenville College	Tigerville	29688	895-1410	72	Edith Sayer
Southern Methodist College	P. O. Box 1027, Orangeburg	29115	534-7826		Marjorie Haile
Spartanburg Methodist College	Spartanburg	29301	576-3911	48	Susan Knox
USC-Beaufort	800 Carteret St., Beaufort	29902	524-6153		Luke Joseph Mallow
USC-Lancaster	Hubbard Drive, Lancaster	29720	285-7471	13	May M. Moore
USC-Salkehatchie	P. O. Box 617, Allendale	29810	584-3446		Sherre L. Harrington
USC-Sumter	Miller Road, Sumter	29150	775-6341		Mrs. Jane Ferguson
USC-Union	P. O. Drawer 729, Union	29379	427-3681		Miss Helen A. Parrish

### TECHNICAL EDUCATION CENTERS

Aiken	P. O. Drawer 696, Aiken	29801	593-9231	76	Mrs. Monette E. Redslob
Beaufort	Beaufort	29902	524-3380	139	Helen B. Fellers
Chesterfield-Marlboro	Drawer 928, Cheraw	29520	537-5286	62	Mrs. Carolyn S. Long
Florence-Darlington	Drawer 8000, Florence	29501	662-8151	223	Lynn Garrote
Greenville	Box 5616, Station B., Greenville	29606	242-3170	321	Martin R. Pautz
Horry-Georgetown	Box 710, Conway	29526	347-3186	35	Sylvia Zack
Midlands—Airport Campus	P. O. Drawer Q, Columbia	29250	796-8401	127	Mrs. Anna Andrews Haltiwanger
Midlands—Beltline Campus	P. O. Drawer Q, Columbia	29250	782-5471	265	Virginia Brooker
Orangeburg-Calhoun	Drawer 1767, Orangeburg	29115	536-0311	296	Margaret F. Huff
Piedmont	Drawer 1208, Greenwood	29646	223-8357	87	Dan Koenig
Spartanburg	Drawer 8386, Spartanburg	29303	576-5770	168	L. Wade Shipman
Sumter	506 N. Guignard Dr., Sumter	29150	773-9371	247	Mrs. Fannie M. Davis
Tri-County	Box 587, Pendleton	29670	646-3227	240	Kaylene B. Wilber
Trident—North Campus	7000 Rivers Ave., Charleston	29405	553-2375	281	Deborah J. Leather
Trident—Palmer Campus	125 Bull St., Charleston	29401	722-0531	35	Mrs. Marion L. Yogel
York	U. S. 21 ByPass, Rock Hill	29730	328-3843	211	Amanda Yu

## LIBRARIES IN STATE INSTITUTIONS

INSTITUTIONS	ADDRESS & ZIP	PHONE	EXT.	LIBRARIAN
Birchwood School	5000 Broad River Road Columbia, South Carolina 29210	758-6422		Mrs. Ann Fayard
Bryan Psychiatric Hospital	P. O. Box 485 Columbia, South Carolina 29202	758-4042		Mrs. Virginia McEachern
Crafts-Farrow State Hospital	7901 Farrow Road Columbia, South Carolina 29203	758-4864		Mrs. Bernetha Flemming
Coastal Center	Jamison Road Ladson, South Carolina 29456	873-5750	240	Mrs. Blanche Fowler
Department of Corrections, Library Services	P. O. Box 21787 Columbia, South Carolina 29221	758-6700	62	Mr. Richard P. Coolidge
Holmesview Center	P. O. Box 7545 Branwood Station Greenville, South Carolina 29610	269-1414		Mr. David Lever, Director
Horger Library, State Hospital	P. O. Drawer 119 Columbia, South Carolina 29202	758-7357		Mrs. Cheryl Kelly
John de la Howe School	McCormick, South Carolina 29835	391-2131	25	Mrs. Myra Creswell
Midlands Center	8301 Farrow Road Columbia, South Carolina 29203	758-4434		
Morris Village	610 Faison Drive Columbia, South Carolina 29203	758-4689		Miss Victoria Smurthwaite
Palmetto Center	P. O. Box 5357 Florence, South Carolina 29501	662-9378		Mr. Robert Stevens, Director
S. C. Crippled Children's Convalescent Center	2310 W. Palmetto Street Florence, South Carolina 29501	758-3468		Mrs. Dorothy Asman, Director
S. C. Schools for the Deaf and the Blind	Cedar Spring Station Spartanburg, South Carolina 29302	585-7711		Mrs. Lewis D. Rouquie
State Park Health Center	Dept. of Health & Environmental Control 2600 Bull Street Columbia, South Carolina 29201	758-4694		Mrs. Evelyn Ruff
Whitten Village	P. O. Box 239 Clinton, South Carolina 29325	833-2733	332	Mr. Hsiu-Yun Keng
William J. Goldsmith Reception & Evaluation Center	3200 Broad River Road Columbia, South Carolina 29210	758-6761		Mrs. Louise Jones
William S. Hall Psychiatric Institute	P. O. Box 119 Columbia, South Carolina 29202	256-9911		Mrs. Neeta Shah
Willow Lane School	4650 Broad River Road Columbia, South Carolina 29202	758-6226		Mrs. Frances F. Shuler
Vocational Rehabilitation Comprehensive Center	1400 Boston Avenue West Columbia, South Carolina 29169	758-8731		Mr. Daniel Hinson

**SOUTH CAROLINA STATE SUPP  
LIBRARY STATISTI**

**OPERATING EXPENSES**

	Residents	Total	Salaries	Books & Other Materials	Audio-Visuals	Other Operating
<b>ADULT CORRECTIONAL INSTITUTIONS</b>						
S. C. Department of Corrections Library . . . . .	5,081(a)	\$72,717.00	\$ 47,387.00	\$ 19,073.00	\$ 3,479.00	\$ 1,478.00
Central Correctional Institution*						
Kirkland Correctional Institution*						
Aiken Youth Correctional Center*						
Givens Youth Correctional Center*						
Women's Correctional Institution*						
Manning Correctional Institution*						
MacDougal Youth Correctional Institution*						
Walden Correctional Institution*						
Wateree River Correctional Institution*						
Goodman Correctional Institution*						
Reception and Evaluation Center*						
Maximum Detention and Retraining Center*						
<b>Youth Services Institutions</b>						
Birchwood School . . . . .	375	16,147.00	13,477.00	2,186.00	484.00	
Willow Lane School . . . . .	200	16,939.07	14,739.00	1,689.00	511.07	
R & E Center . . . . .	230	14,905.00	13,942.00	963.00		
<b>Institutions for the Mentally Retarded</b>						
Coastal Center . . . . .	542	21,816.22	11,434.00	4,139.61	3,911.83	1,521.88
Midlands Center . . . . .	522	19,874.33	15,235.44	2,455.02	1,437.15	2,646.72
Whitten Village . . . . .	2,400	66,731.00	42,272.00	11,981.00	6,758.00	5,720.00
<b>Mental Health Institutions</b>						
Crafts-Farrow State Hospital . . . . .	1,690	34,489.50	26,371.00	5,602.67	1,583.83	932.10
S. C. State Hospital—Horger Library . . . . .	1,684	34,016.00	23,330.00	7,009.33	2,110.67	3,566.00
William S. Hall Institute (b) . . . . .						
<b>Institutions for Physically Handicapped</b>						
S. C. School for the Blind . . . . .	151	11,904.26	10,572.30	1,221.96	110.00	
S. C. School for the Deaf . . . . .	416	16,101.50	13,566.62	2,337.39		
S. C. Crippled Children's Convalescent Center (c) . . . . .	36	2,055.00	2,055.00	481.00		
<b>Special Institutions</b>						
John de la Howe School . . . . .	216	16,699.00	13,769.00	2,083.00	97.00	
State Park Health Center . . . . .	529**	18,222.76	16,191.00	1,955.10		
Holmesview Center (d) . . . . .	240**	400.00		400.00		
Earle E. Morris Village (d) . . . . .	810**	800.00		800.00		
Palmetto Center (d) . . . . .	276**	600.00		600.00		
		\$362,362.64	\$264,341.36	\$64,977.08	\$ 20,482.55	\$ 10,478.88

\* Served by S. C. Department of Corrections Library.

\*\* Represents total residents served annually, not capacity or population of institution.

(a) Total number of residents for all 12 adult correctional centers served.

(b) Library for professional staff only (300 staff members).

(c) Served by Florence County Library under contract between S. C. State Library, Florence County Library and the Co.

(d) No library at the Center. The State Library selects and purchases paperback books for those institutions.



OPERA

	Population of Area Taxed for Support 1970 Census	Total	Salaries
<b>Regional Libraries</b>			
Abbeville-Greenwood	70,798	\$ 182,553.18	\$ 120,802.
Aiken-Bamberg-Barnwell-Edgefield	139,841	323,242.00	213,488.
Allendale-Hampton-Jasper	37,455	64,394.90	29,616.
Newberry-Saluda	43,801	95,576.42	51,175.
<b>County Libraries 100,000 &amp; Over</b>			
Anderson County Library	105,474	309,030.86	151,073.4
Charleston County Library	247,650	906,095.15	468,085.1
Greenville County Library	240,546	1,762,422.00	1,008,370.4
Richland County Library	233,868	1,233,576.67	659,582.3
Spartanburg County Library	173,724	490,582.40	303,834.4
<b>County Libraries 50,000 - 100,000</b>			
Beaufort County Library	51,136	155,212.00	77,295.0
Berkeley County Library	56,199	142,198.89	82,506.4
Darlington County Library	53,442	188,919.70	102,506.6
Florence County Library	69,636	271,250.65	152,174.8
Horry County Memorial Library	69,992	195,752.27	130,894.0
Lexington County Circulating Library	89,012	191,346.09	123,622.2
Orangeburg County Free Library	69,789	181,756.93	72,751.1
Pickens County Library	58,956	173,455.45	107,044.7
Sumter County Library	79,425	219,896.43	134,742.7
York County Library	85,216	234,764.29	118,658.2
<b>County Libraries 25,000 - 50,000</b>			
Cherokee County Public Library	36,791	124,102.00	69,713.0
Chester County Free Public Library	29,811	82,950.69	44,327.4
Chesterfield County Library	33,667	72,470.50	37,957.2
†Clarendon County Library	25,604	18,599.77	.....
Colleton County Memorial Library	27,622	72,010.97	46,052.9
Dillon County Library	28,838	62,874.45	36,097.5
Dorchester County Library	32,276	68,249.57	28,967.6
Georgetown County Memorial Library	33,500	91,586.72	55,015.5
Kershaw County Library	34,727	109,093.91	68,369.9
Lancaster County Library	43,328	105,874.25	50,659.6
Laurens County Library	49,713	145,638.32	82,146.6
Marion County Library	30,270	113,749.41	59,771.5
Marlboro County Public Library	27,151	46,623.03	30,536.6
Oconee County Library	40,728	103,259.63	65,124.7
Union Carnegie Library	29,230	62,783.75	31,009.3
Williamsburg County Library	34,243	23,082.93	8,703.8
<b>County Libraries 25,000 &amp; Under</b>			
Calhoun County Public Library	10,780	38,564.90	22,293.3
Fairfield County Library	19,999	47,811.18	26,937.6
Lee County Public Library	18,323	23,618.18	12,487.0
McCormick County Library	7,955	10,910.39	3,786.3
<b>Municipal &amp; Township Libraries</b>			
Chapin Memorial Library (Included in Horry)		41,415.59	24,739.3
South Carolina State Library			447,820.0
<b>TOTALS</b>	<b>2,590,516</b>	<b>\$ 8,737,096.42</b>	<b>\$ 5,360,739.6</b>

\* All 1976-77 statistics based on 1970 Census.  
 \*\* Grants-in-Aid figures may vary from that shown on local reports because of date of receipt of funds.  
 † Clarendon served by Sumter.  
 ‡ Total LSCA Income, including grants to libraries. County libraries income is from local support only.  
 (5) Special appropriation for Transitional Quarter for Federal fiscal year included.

**SOUTH CAROLINA  
ANNUAL LIBRARY STATEMENT**

**OPERATING EXPENDITURES 1976-77**

Total	Salaries	Books & Periodicals	Audio-Visual Materials	Other Operating Expenses	Capital Outlay	Income 1976-77 Total Budget	Tax Rate Mills	
553.18	\$ 120,802.10	\$ 28,227.76	\$ 5,033.65	\$ 28,489.67	\$ 232,322.24	\$ 187,721.09	2	\$ 39
242.00	213,488.13	57,945.49	2,738.58	49,069.80	..	335,280.53	..	84
394.90	29,616.20	15,615.13	357.48	18,806.09	..	67,000.24	..	20
576.42	51,175.39	23,215.11	938.50	20,247.42	..	97,005.37	..	27
030.86	151,073.80	68,299.73	3,974.83	85,682.50	3,622.25	320,808.89	2	48
095.15	468,085.59	213,303.02	5,043.97	219,662.57	..	939,404.75	..	140
422.00	1,008,370.00	436,848.00	..	317,204.00	18,133.00	2,095,152.00	7	147
576.67	659,582.36	346,071.50	11,018.30	216,904.51	9,854.07	1,369,173.35	..	135
582.40	303,834.00	86,499.40	8,589.00	91,660.00	7,500.00	493,139.40	..	91
212.00	77,295.00	32,622.00	7,636.00	37,659.00	9,621.00	169,715.00	..	30
198.89	82,506.41	39,350.38	3,760.28	16,581.82	..	136,591.94	..	48
919.70	102,506.64	38,219.01	439.62	47,754.43	..	194,146.43	3	37
250.65	152,174.87	47,342.60	3,496.65	68,236.53	201,242.00	308,420.08	..	71
752.27	130,894.09	36,536.88	6,478.03	21,843.27	..	196,456.07	..	42
346.09	123,622.43	33,037.75	..	34,685.91	..	191,411.70	..	46
756.93	72,751.14	38,394.42	1,007.15	19,604.22	4,751.36	134,815.10	..	31
455.45	107,044.71	35,350.81	1,480.49	19,579.44	2,200.52	175,818.71	..	34
896.43	134,742.79	54,556.29	2,413.03	28,184.32	..	205,693.50	..	42
764.29	118,658.26	44,466.26	5,247.92	66,391.85	..	289,543.30	2	35
102.00	69,713.00	26,842.00	640.00	26,907.00	..	131,885.00	1	18
950.69	44,327.48	21,540.64	..	17,082.57	..	83,010.30	2.75	15
470.50	37,957.20	19,912.74	422.86	14,177.70	832.00	72,891.69	..	25
599.77	..	3,314.94	..	15,284.83	..	54,419.72	..	8
010.97	46,052.98	17,076.97	474.07	8,406.95	..	74,010.97	..	13
874.45	36,097.50	19,416.49	1,988.16	5,372.30	..	64,405.27	..	22
249.57	28,967.61	22,295.26	1,995.74	14,990.96	3,492.00	66,767.27	..	14
586.72	55,015.18	32,706.02	836.30	12,029.22	..	121,959.45	..	18
093.91	68,369.15	22,685.26	750.93	17,288.57	1,851.36	110,628.50	..	17
874.25	50,659.67	19,372.79	1,034.34	34,807.45	..	149,614.26	..	22
638.32	82,146.19	32,873.54	1,464.75	29,153.84	6,258.76	146,039.99	..	24
749.41	59,771.58	24,038.09	971.66	28,970.08	7,201.81	133,958.00	4	16
623.03	30,536.80	10,607.21	..	5,479.02	..	46,623.03	..	13
259.63	65,124.72	23,667.83	195.18	14,271.90	..	105,442.41	..	21
783.75	31,009.35	15,476.59	2,206.07	14,091.74	..	62,462.43	..	22
082.93	8,703.86	5,031.23	116.20	9,231.64	..	29,764.24	..	11
564.90	22,293.12	7,166.95	180.08	8,924.75	1,922.63	38,940.56	..	8
611.18	26,937.68	9,696.17	3,160.99	7,816.34	..	47,877.06	3	10
618.18	12,487.00	6,829.85	216.92	4,084.43	..	23,620.76	..	6
910.39	3,786.31	3,348.79	..	3,775.29	..	10,877.05	..	5
415.59	24,739.37	12,504.30	..	4,171.92	..	44,584.25	..	..
..	447,820.00	117,336.00	..	..	..	5,104,089.00	..	..
096.42	\$ 5,380,739.66	\$ 2,140,639.18	\$ 86,307.73	\$ 1,714,565.85	\$ 501,184.00	\$ 10,568,168.66	..	\$ 1,475

of receipt of funds. Includes 75, 76 and 77 funds. No construction Grants included.

on local support only. (Inclusive of Operating Revenue.)

CAROLINA PUBLIC LIBRARIES  
 RY STATISTICS, 1976-77 FISCAL YEAR

BOOKSTOCK				REGISTERED USERS			
Grants-In-Aid	Revenue Sharing (Special)	Total Volumes	Volumes Added	Newspapers	Periodicals	Total	Juvenile
\$ 39,198.00	\$ 900.00	114,834	4,626	6	141	25,544	10,242
84,597.00	..	159,945	10,184	17	330	45,987	..
20,913.00	..	53,958	1,993	6	93	10,513	4,741
27,267.00	3,000.00	58,227	3,029	7	113	11,877	3,728
48,949.00	61,000.00	138,162	10,388	11	229	23,750	5,472
140,959.00	..	368,322	27,410	39	503	74,996	..
147,363.00	9,722.00	397,809	45,166	49	1,260	..	..
185,395.00	..	303,591	50,054	34	989	152,120	40,481
91,089.00	..	205,259	10,294	19	338	36,070	9,270
30,458.00	11,200.00	68,285	5,300	13	157	15,145	..
48,682.00	..	48,400	5,210	4	123	9,157	2,618
37,694.00	..	112,989	4,295	31	337	22,781	8,967
71,677.00	..	104,906	7,536	17	262	37,976	18,219
42,881.00	5,000.00	97,435	5,261	10	281	24,418	..
46,741.00	1,000.00	122,029	6,253	9	180	54,053	27,803
31,871.00	..	48,616	4,443	16	185	16,982	5,074
34,149.00	..	59,986	4,568	10	158	29,582	12,500
42,714.00	..	74,448	7,926	15	187	18,219	5,335
35,984.00	..	114,376	10,220	16	291	22,081	7,687
18,566.00	..	66,895	3,470	7	158	12,595	..
15,676.00	..	42,241	3,747	9	127	9,490	3,751
25,177.00	..	33,448	3,690	7	84	10,906	4,296
8,961.00	..	..	..	..	..	..	..
13,523.00	..	53,087	2,976	5	80	7,481	3,284
22,637.00	..	51,004	2,038	6	144	..	..
14,060.00	..	28,575	2,344	4	95	6,913	3,910
18,868.00	..	43,100	3,021	13	126	6,500	..
17,303.00	..	69,360	3,145	13	164	12,249	..
22,765.00	5,000.00	52,991	2,878	4	125	13,821	4,918
24,149.00	11,000.00	79,499	5,820	10	163	20,000	..
16,033.00	..	32,130	2,240	11	126	8,570	..
13,045.00	..	31,214	1,769	6	77	8,596	1,488
21,234.00	..	73,664	3,488	3	118	9,602	..
22,301.00	550.00	27,027	3,065	6	144	4,745	1,291
11,985.00	..	18,738	570	5	44	4,948	2,391
8,967.00	..	31,821	1,073	6	91	2,870	1,333
10,176.00	..	29,601	1,043	4	89	4,657	..
6,413.00	2,000.00	20,430	974	2	48	4,548	..
5,034.00	..	7,706	605	1	26	1,095	424
..	..	25,063	2,351	13	80	8,679	..
..	..	136,367	..	9	1,473	..	..
\$ 1,475,454.00	\$ 110,372.00	3,605,538	274,463	473	9,739	789,516	189,223

CIRCULATION		INTERLIBRARY LOANS					
Total	Juvenile	Loan Period (Days)	Volumes Lent	Volumes Borrowed	Reference & Reading Aid Transactions	Number of Branches & Stations	Bookmobiles Operated
231,040	87,843	14	..	130	3,169	5	1
489,916	174,760	28	19	529	..	5	1
44,937	19,459	14	..	872	3,169	1	1
126,551	43,783	14	..	83	4,632	2	1
369,577	144,055	14	27	787	5,500	7	1
715,572	291,755	28	23	507	69,545	10	2
1,103,333	..	28	161	694	108,708	7	5
849,180	313,892	21	28	841	86,965	7	1
422,860	165,223	28	36	595	16,370	3	2
108,152	29,700	21	..	354	..	1	1
126,029	37,082	14	..	211	1,650	3	1
162,841	73,760	14	34	482	1,450	4	1
229,490	97,341	14	40	840	17,006	6	2
224,159	51,912	21	7	210	6,377	3	1
217,408	102,883	14	..	48	11,541	5	1
150,251	50,693	14	..	334	..	2	1
160,001	53,440	28	19	362	8,663	4	1
176,986	60,795	14	5	727	4,000	..	1
235,595	95,207	14	2	127	5,057	3	1
122,115	43,257	14	86	506	4,237	1	1
90,158	38,762	14	..	210	3,503	1	1
70,751	31,003	14	1	1,468	457	2	1
89,927	32,889	14	3	268	3,058	..	1
54,799	15,857	21	..	191	..	2	1
37,102	18,838	14	161	375	4,970	1	1
53,592	19,079	14	1	451	..	1	1
116,765	33,883	14	..	634	..	1	1
122,056	44,145	14	..	300	..	..	1
131,173	49,496	28	21	546	..	2	1
77,539	19,198	14	8	120	321	2	1
73,153	29,382	14	..	222	7,825	..	1
122,484	34,214	28	23	198	5,327	3	1
33,181	7,171	28	1	99	137	..	1
18,437	6,718	14	..	165	..	1	..
35,668	20,240	14	..	612	645	1	1
28,126	7,203	14	..	422	1,248	1	1
28,831	8,201	14	..	121	42	..	1
5,289	2,523	14	..	119	600	..	..
91,293	16,650	28	..	..	..	..	..
35,952	..	..	18,893	..	9,554	..	..
7,582,269	2,372,292	..	19,599	15,760	395,726	101	43