

D4925
2.I52535-2
Copy 1

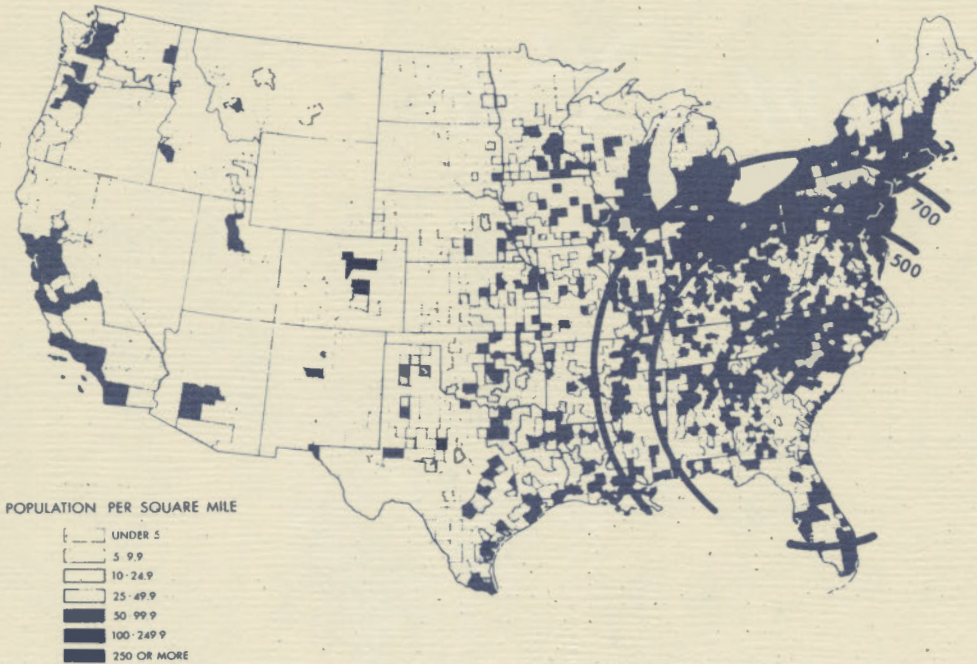
South Carolina Industrial Data Wilson Site



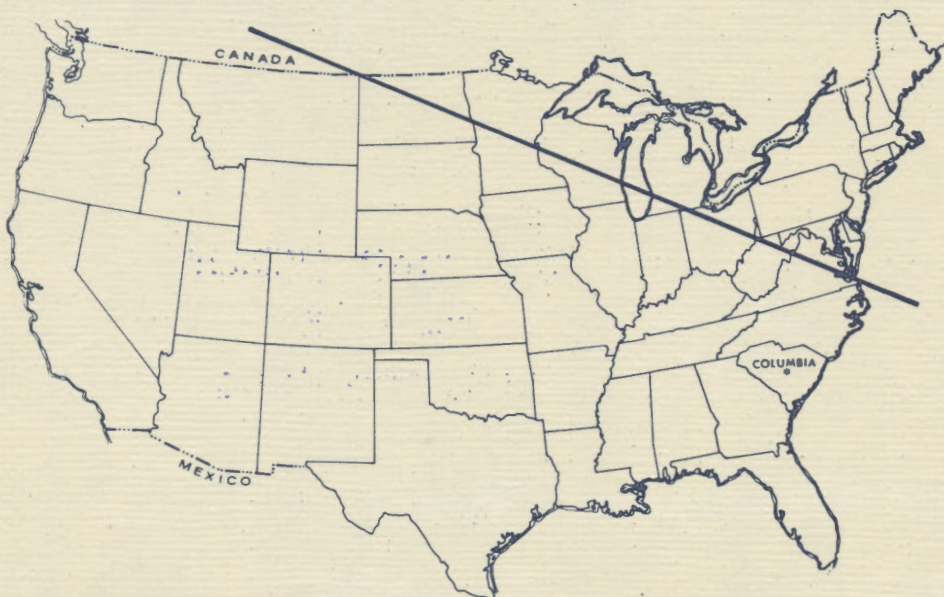
State Development Board
Box 927
Columbia

South Carolina can serve the Nation

From Cover: Columbia, is due South of Cleveland, Ohio, and due East of Los Angeles

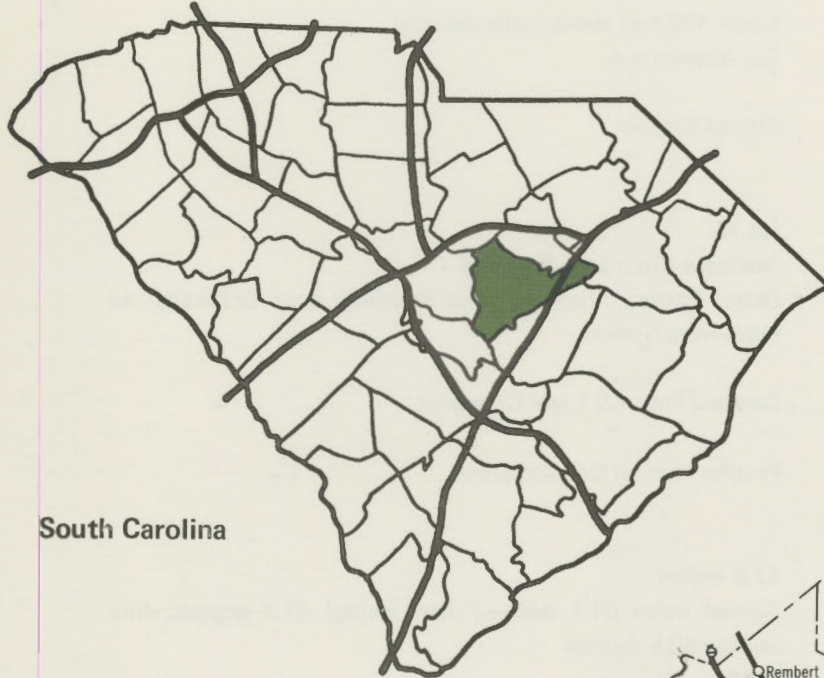


Columbia is within 500 miles of 53 million (27%) and 700 miles of 125 million (62%) of the nations population.

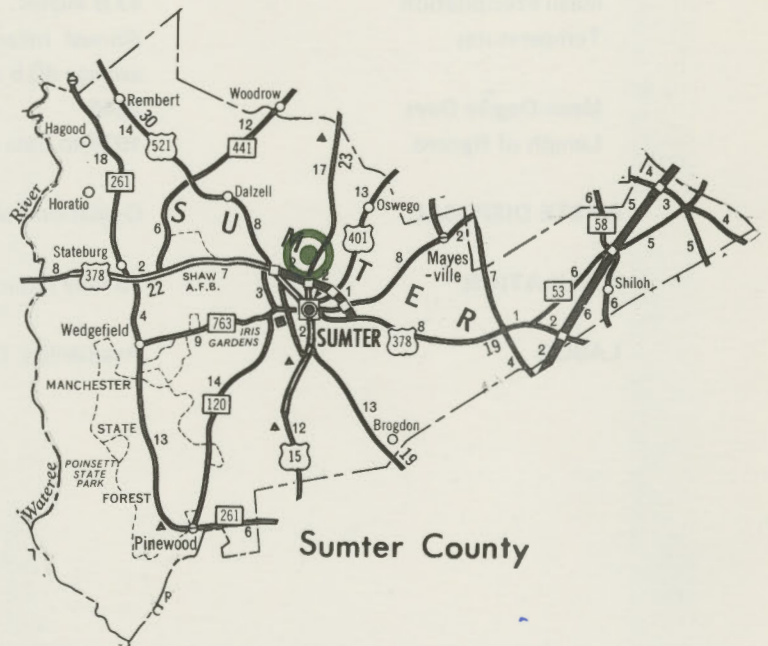


Columbia is closer to 87% of the United States than New York City. This area represents 64% of the nation's population.

Wilson Site



South Carolina



Sumter County



S. C. STATE LIBRARY

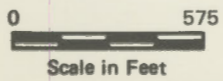
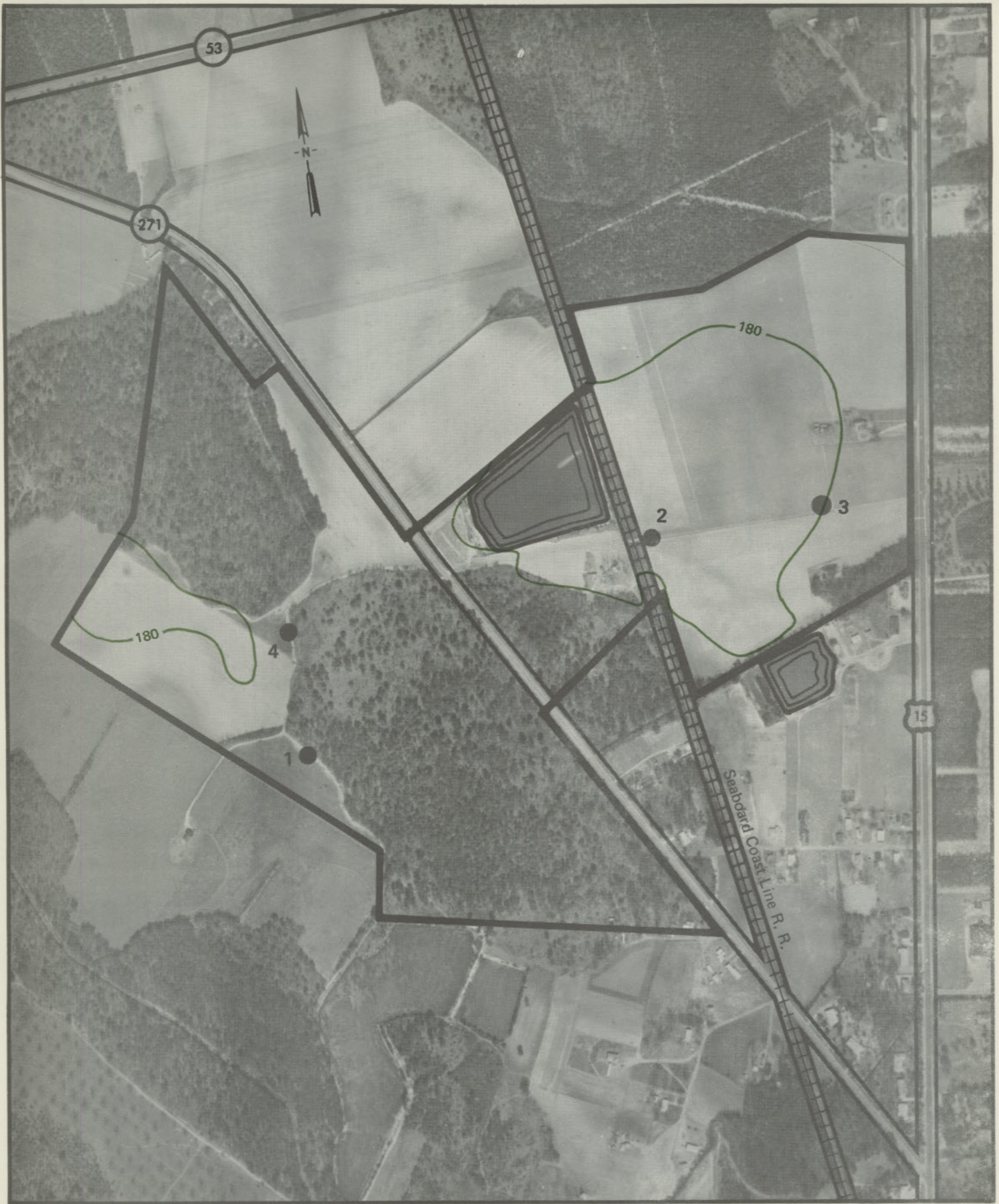
AUG 07 1990

STATE DOCUMENTS

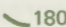

Prepared by
STATE DEVELOPMENT BOARD
In Cooperation with
COASTAL PLAINS REGIONAL COMMISSION

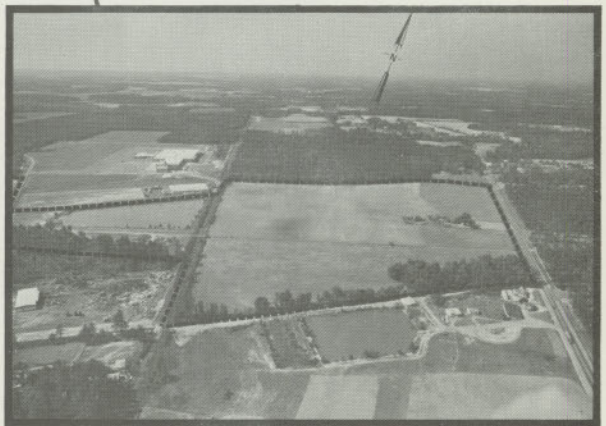
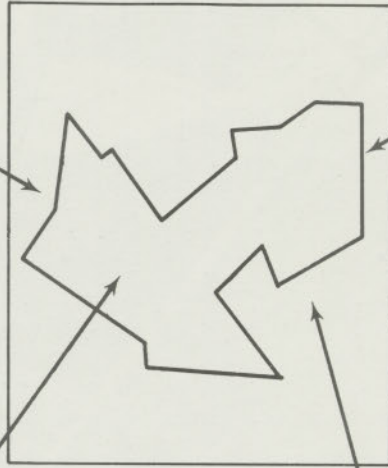
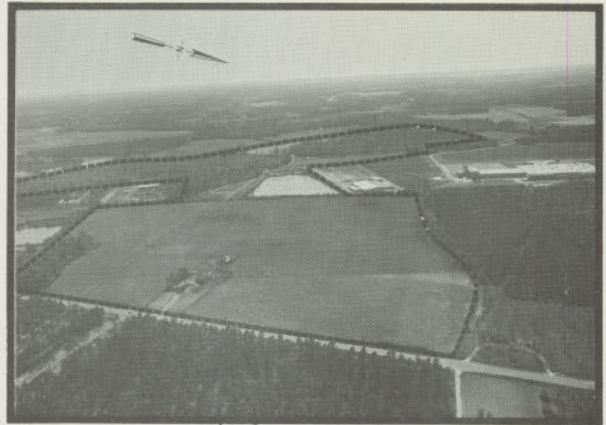
**BASIC INDUSTRIAL SITE DATA
WILSON SITE**

LOCATION OF SITE	1 mile north of Sumter
SITE DESCRIPTION	
Acreage	173 acres, more or less
Topography	Level. 180 feet above mean sea level
Soil Bearing	See Appendix A
WATER SUPPLY	City of Sumter
TRANSPORTATION	
Highway	US 15
Rail	Seaboard Coast Line Railroad
Air	Delta, Eastern, Piedmont and Southern serve Columbia; 44 miles from Sumter
ELECTRIC POWER	Carolina Power & Light Company
NATURAL GAS	Peoples Natural Gas Company
CLIMATE	
Mean Precipitation	47.0 inches
Temperatures	Annual mean 64.1 degrees; Jan. average 47.2 degrees; July average 80.5 degrees
Mean Degree Days	2345
Length of Record	1935 to date
WASTE DISPOSAL	Oxidation ponds
POPULATION	15 mile radius 81,530; 30 mile radius 179,356
LABOR	Availability 15 mile and 30 mile radius. See Appendix B



Wilson Site

-  180 Contours
-  Drill Holes



NOTE: Boundaries on photographs are approximate.

SUMTER CITY DATA

LOCATION

Sumter, the seat of Sumter County, is located in the central section of the state on U. S. 15, 378, 76, 521, 401 and S. C. 120 and 763. The community is 12 miles from Interstate 95 and 20 miles from Interstate 20. New York is 675 miles from Sumter, Chicago is 831 miles and Atlanta is 258 miles.

CLIMATE

The climate in the Sumter area is mild-temperate.

Mean annual temperature	64.1°
Mean maximum temperature	76.2°
Mean minimum temperature	51.9°
12-month average relative humidity	
Daily range:	
1:00 a.m.	83%
7:00 a.m.	87%
1:00 p.m.	51%
7:00 p.m.	65%
Mean annual precipitation	47.02 inches
Average length of growing season	222 days
Elevation	169 feet

POPULATION

Sumter County has a population of 79,425 residents, with 24,435 persons living in Sumter. Over 81,530 persons live within a 15-mile radius of the city, and more than 179,350 live within a 30-mile radius of the community.

LABOR

A current labor availability report will be furnished a prospective manufacturer upon request. This comprehensive report includes sources of recruitable labor, labor force characteristics, work force skill levels, earnings data and other pertinent information. The State Committee for Technical Education will recruit workers based upon the company's entry criteria and train them at no cost to the employer. A lead-time schedule is developed to coordinate recruiting, testing, selecting and training. This assures that persons will be able to move from training to their respective jobs at the time the plant is ready for production.

GOVERNMENT

Sumter has a council-manager form of municipal government. The mayor is elected for a term of four years, and the four councilmen serve four-year staggered terms. City Council appoints the city manager. Sumter County is governed locally by a county commission form of government. The seven members of the commission are elected for four-year alternating terms of office.

FINANCIAL

Sumter has three banks and two savings and loan associations. The National Bank of S. C., the Citizens and Southern National Bank and the S. C. National Bank have combined assets of over \$1.08 billion. First Federal Savings and Loan and Home Federal Savings and Loan have combined assets of \$38,508,090.

TRANSPORTATION

Rail freight service is available in Sumter on Seaboard Coast Line Railroad. Rail passenger service is available at Florence, S. C., 40 miles from the community. Interstate motor freight service is available from 26 authorized carriers, three of which have terminals in the community.

Freight delivery times:

To:	By Rail	By Truck
Atlanta	2 days	1 day
Boston	5 days	2 days
Chicago	4 days	2 days
Houston	6 days	3 days
New York	4 days	2 days
St. Louis	4 days	2 days
San Francisco	6 days	7 days

The Columbia Metropolitan Airport, 44 miles from the community, offers regular scheduled commercial airline service on Delta, Eastern, Piedmont and Southern Airlines. Private aircraft utilize the Sumter Municipal Airport, five miles away, which has a 4,800-foot, paved and lighted runway and a 3,500-foot, lighted turf runway. Among the services offered are instruction, car rentals, charter, major and minor repairs, hangars, tie-downs, 80/87 and 100/130 octane fuel.

FUELS

Natural gas is supplied in Sumter by the Peoples Natural Gas Company. Peoples Natural Gas Company will extend natural gas into an area where consumption warrants investment. Delivery pressures are normally between 5 and 10 psi, depending upon the customer's requirements. Rates for large industrial users are subject to negotiation. The average BTU of gas supplied is 1050 per cubic foot, and the specific gravity is approximately .600. Fifteen bulk stations in the community provide No. 1 and No. 2 fuel oil, with other grades available from Charleston, 100 miles away. The nearest purchase sites are Charleston and Spartanburg, 154 miles away. Freight cost for No. 2 from Charleston to the community is 1.184 cents per gallon, with fuel cost negotiable for transport truck purchases.

POWER

Electric power is supplied by Carolina Power and Light Company. Service is supplied to any industrial customer without regard to maximum or minimum demands.

Depending on demands and load factor, attractive industrial rates are available, normally at 25-30 percent below the national average. Assistance in establishing load requirements is given in order to determine that the customer is served at the most advantageous rate. Accounts are regularly analyzed to assure the lowest rate application.

High load factor service with demands of 1,500 KW or over.
Demand Charge:
First 1,500 KW of Billing Demand for \$3,905.00
Excess over 1,500 KW of Billing Demand @ \$2.22 per KW
Energy Charge:
All kilowatt-hours @ 0.456c per Kwhr

TAXES

The assessment on industrial property in South Carolina is 9.5 percent of the gross plant account. New industry is granted a five-year moratorium on general county taxes, with the exception of school taxes. The county tax rate varies by district from \$12.60 to \$13.50 per \$100 of assessed value. The municipal tax rate is \$5.20 per \$100 of assessed value. The state has no tax on a manufacturer's inventories, goods-in-process, raw materials or finished goods. Treatment facilities or equipment of manufacturing plants which control water or air pollution are exempt from all property taxation.

COMMUNICATIONS

The Sumter Daily Item and the weekly Sumter News are

published in the city. Six large dailies also circulate in the area. Three AM radio stations and one FM broadcast station are located in the community. Seven television stations representing the three major networks can be received in Sumter. A seven-channel cable television service is also available. Telephone service in the community is provided by the General Telephone Company of the Southeast and the Farmers Telephone Cooperative.

WATER AND SEWAGE

Sumter's city water system utilizes 10 deep wells to supply a maximum of 15,000,000 gallons of treated water a day. The peak daily demand on the system is 12,000,000 gallons, with an average daily demand of 6,000,000 gallons. Elevated storage facilities consist of two 250,000-gallon tanks and two 500,000-gallon tanks. Ground level storage facilities have a combined capacity of 3,485,000 gallons.

Analysis of treated water:

Total solids	82.00 ppm
Alkalinity	50.00 ppm
Hardness	41.00 ppm
Iron	0.28 ppm
Chloride	4.00 ppm
pH	7.0

Monthly in-city water rates for all users:

First 3,000 gallons	\$3.50 (minimum bill)
Next 27,000 gallons	.35 per 1,000
Next 70,000 gallons	.30 per 1,000
Next 100,000 gallons	.25 per 1,000
Next 100,000 gallons	.20 per 1,000
Next 200,000 gallons	.15 per 1,000
Next 1,500,000 gallons	.125 per 1,000
Next 3,000,000 gallons	.10 per 1,000
Over 5,000,000 gallons	.08 per 1,000

In-city water rates apply to all industrial users.

Sumter utilizes a trickling filter treatment system within the city and oxidation ponds outside the city. The two trickling filter treatment plants have a combined capacity of 4,000,000 gallons per day, with a peak usage of 4,500,000 gallons per day. Lagoons are constructed as required to serve development outside the city. The residential sewer rate is equal to 50% of the average cost of water used during January, February and March. Industrial plants discharging wastes other than domestic may be charged a special rate.

POLICE AND FIRE

The Sumter Police Department employs 46 full-time police officers, and operates 15 radio-equipped patrol cars and two motorcycles. The department has 33 full-time firemen. The fire department operates seven pumper trucks and one aerial ladder truck. The community has a box alarm system and a Class Six insurance rating.

EDUCATION

Sumter County has 29 public schools with 13,396 elemen-

INDUSTRY

The average monthly manufacturing employment in Sumter County exceeds 7,320. The total manufacturing payroll in the county exceeds \$35.7 million a year. Listed below are some of the industries in the county and the type of products manufactured.

COMPANY	PRODUCT	NO. EMPLOYEES
Campbell Soup Company	Frozen TV chicken dinners	1,922
Williams Furniture	Furniture	1,150
Electric Storage Battery, Inc.	Batteries	550
Santee Print Works	Fabric printing and finishing	500
Pioneer Dress Corp.	Children's dresses	428

tary school students and 8,837 high school students. The county has 521 elementary school teachers and 413 high school teachers. The average expenditure per pupil for the 1969-70 school year in Sumter District 17, which includes the city, was \$568. Private schooling is available at Thomas Sumter Academy (1-12), Wilson Hall (1-12), St. Jude's Catholic School (7-12) and St. Anne's Catholic School (1-6). Higher education facilities in the city include the Sumter Area Technical Education Center, the Sumter Extension of Clemson University and Morris College.

MEDICAL SERVICES

Medical facilities in the community are provided by a 205-bed Tuomey Hospital. Four general hospitals with a combined total of over 1,000 beds are located in Columbia, 44 miles from Sumter. The city has 32 physicians and 15 dentists practicing in the community.

HOTELS AND MOTELS

Sumter has three large motels and several smaller ones providing a combined total of over 350 overnight accommodations. Meeting and banquet facilities are available for groups of up to 500 persons.

RECREATION

Swan Lake Iris Gardens, in the city, is a 128-acre tract of landscaped gardens and lakes. Organized recreation for all age groups is under a full-time director, and utilizes the city's four year-round playgrounds and community centers, 10 summer playgrounds and one public swimming pool. One private golf club and one public golf course serve the community, with another course under construction. Three indoor movie theaters, one outdoor theater, a Little Theater group, Community Concert Association, art gallery, historical sites and professional baseball team provide other entertainment.

CHURCHES

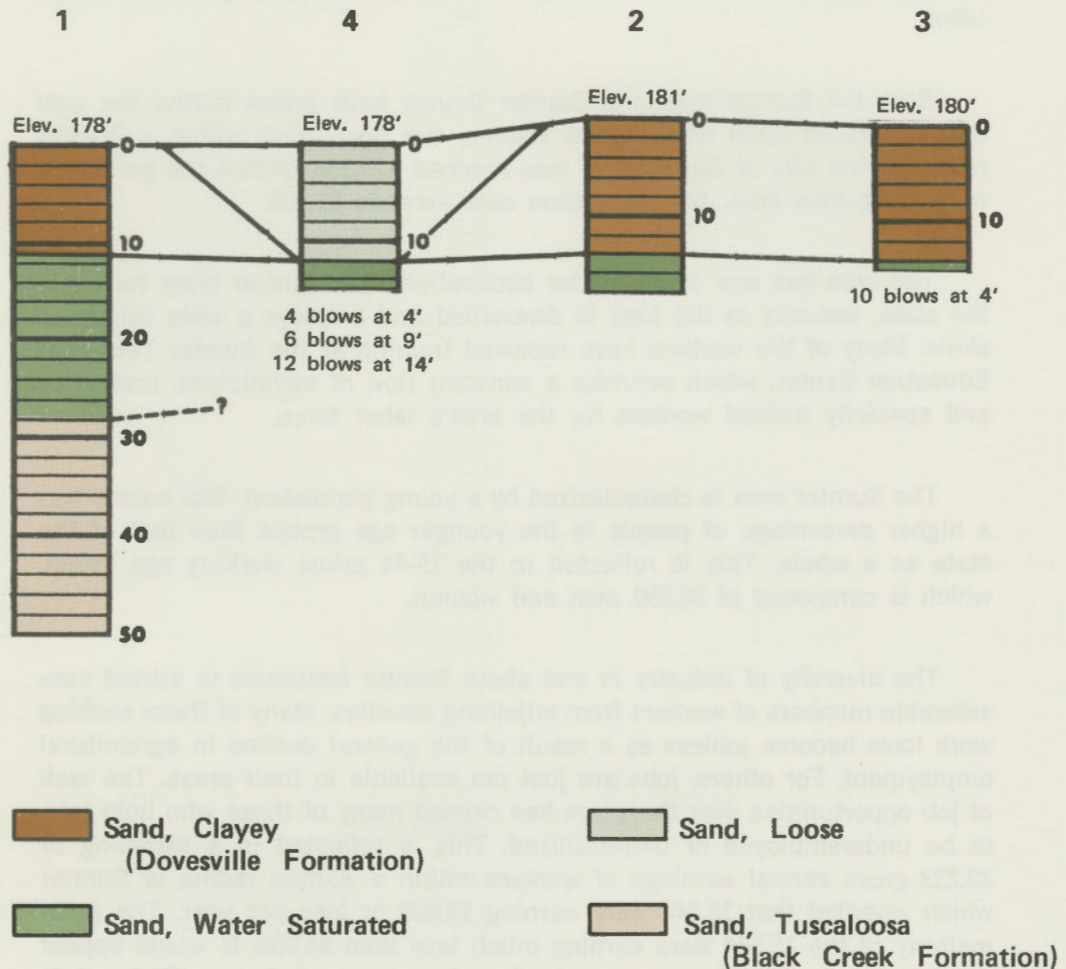
Sumter has over 60 churches representing 20 religious faiths, including Catholic, Jewish and Protestant denominations.

SITE DATA

Sumter has three prime industrial sites. A 26.6-acre rail site is owned by the community and consists of level to slightly rolling land which is sparsely covered with small trees. City water is available at the site, with natural gas and power readily available. A 53.75-acre site with rail accessibility is located within the city on U. S. 76 and U. S. 378, and has all utilities nearby. Cleared acreage in the site totals 15 acres of nearly level terrain. A 508-acre site is located south of the city on U. S. 15 and borders Bethel Branch. All utilities could be made available to the site, except for municipal sewerage. Approximately 100 acres of slightly rolling terrain is cleared.

GEOLOGIC CONDITIONS

Wilson Site



This site is characterized by flat, well drained land which is immediately underlain by the stiff, clayey sands of the Dovesville Formation. This unit is typically very uniform in composition and exhibits bearing values in the range of 2500-4000 pounds per square foot (psf).

The drainage area in the vicinity of hole No. 4 is underlain by a loose, organic sand with a bearing capacity in the range of 1000-1500 psf.

The water table will be encountered in the 10-15 foot interval.

NOTE: The above drilling logs were obtained by auger boring and are indicative of the material present at the particular spot where the borings were made. The soil bearing ranges are based upon standard penetration tests performed at the depths mentioned above. This information is intended to be used as guidance in site selection and plant location; close-spaced drilling should be performed before the site is utilized.

LABOR INFORMATION

APPENDIX B

SUMTER, S. C. AREA

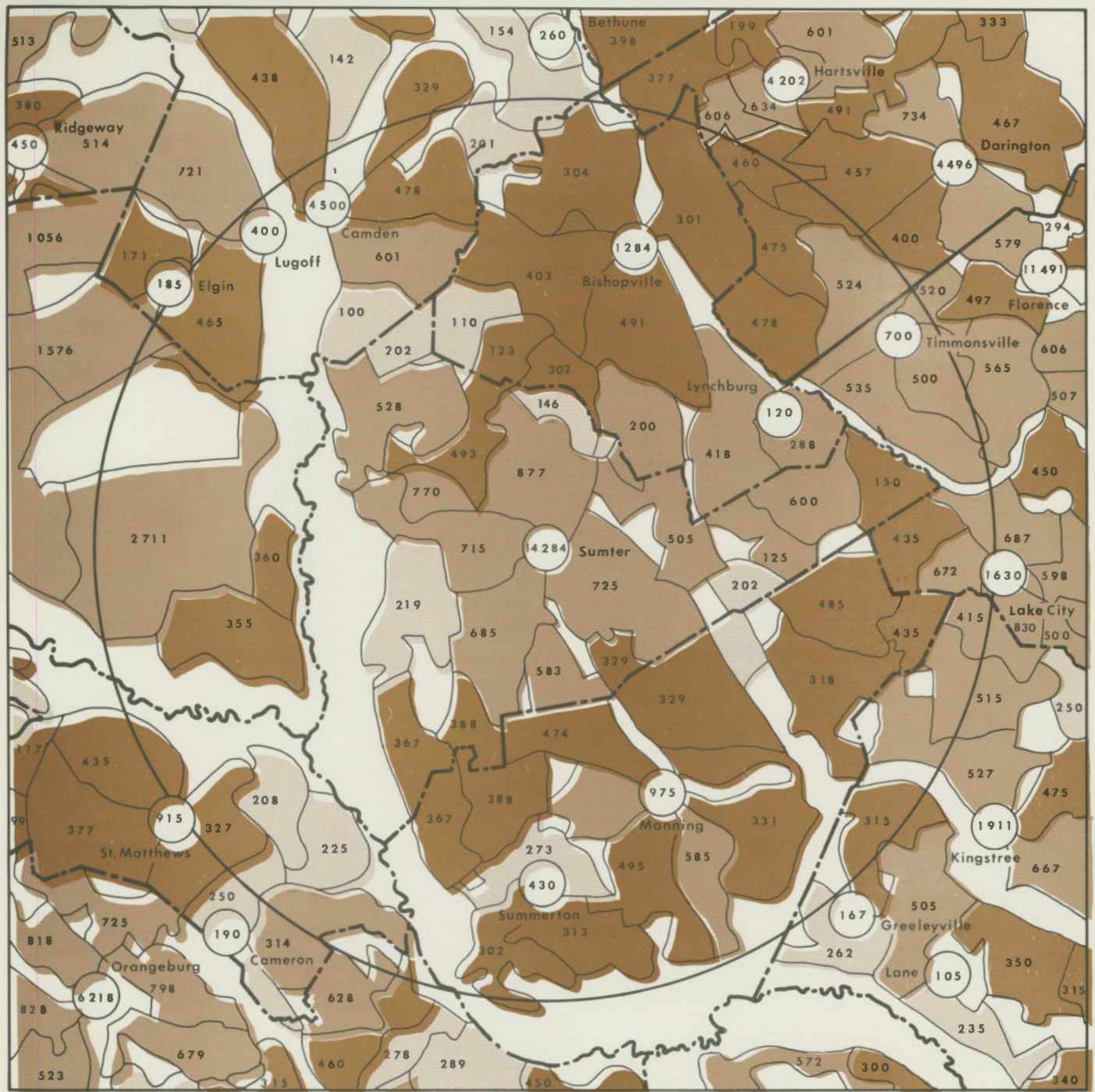
The growth and development of Sumter's industrial complex is the result of intelligent and effective planning; however, the key attraction to the Sumter area has been, and continues to be, the availability of recruitable labor.

Both the Sumter area and Sumter County have grown during the past decade. Based upon new census figures, the population within a 30-mile radius of the city of Sumter has now reached 179,356. Within the prime 15-mile labor-draw area, the population now exceeds 81,500.

The area has one of the better occupationally-balanced labor forces in the state. Industry in the area is diversified and employs a wide variety of skills. Many of the workers have received training at the Sumter Technical Education Center, which provides a constant flow of technicians, craftsmen and specially trained workers for the area's labor force.

The Sumter area is characterized by a young population. The county has a higher percentage of people in the younger age groups than that of the state as a whole. This is reflected in the 19-44 prime working age group, which is composed of 26,250 men and women.

The diversity of industry in and about Sumter continues to attract considerable numbers of workers from adjoining counties. Many of those seeking work have become jobless as a result of the general decline in agricultural employment. For others, jobs are just not available in their areas. The lack of job opportunities over the years has caused many of those who hold jobs to be underemployed or underutilized. This is reflected in a sampling of 23,233 gross annual earnings of workers within a 30-mile radius of Sumter which revealed that 16,344 were earning \$4,000 or less per year. The great majority of the 16,344 were earning much less than \$4,000. It would appear this group would be a prime source of workers to any industry offering full-time employment with more attractive earnings potential.



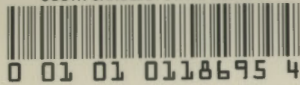
POPULATION DENSITY

30 MILE RADIUS

SUMTER

- 0-299 Families
- 300-499 Families
- 500-Over Families

County Range Per Family 3.0 to 4.1



WATER SUPPLY

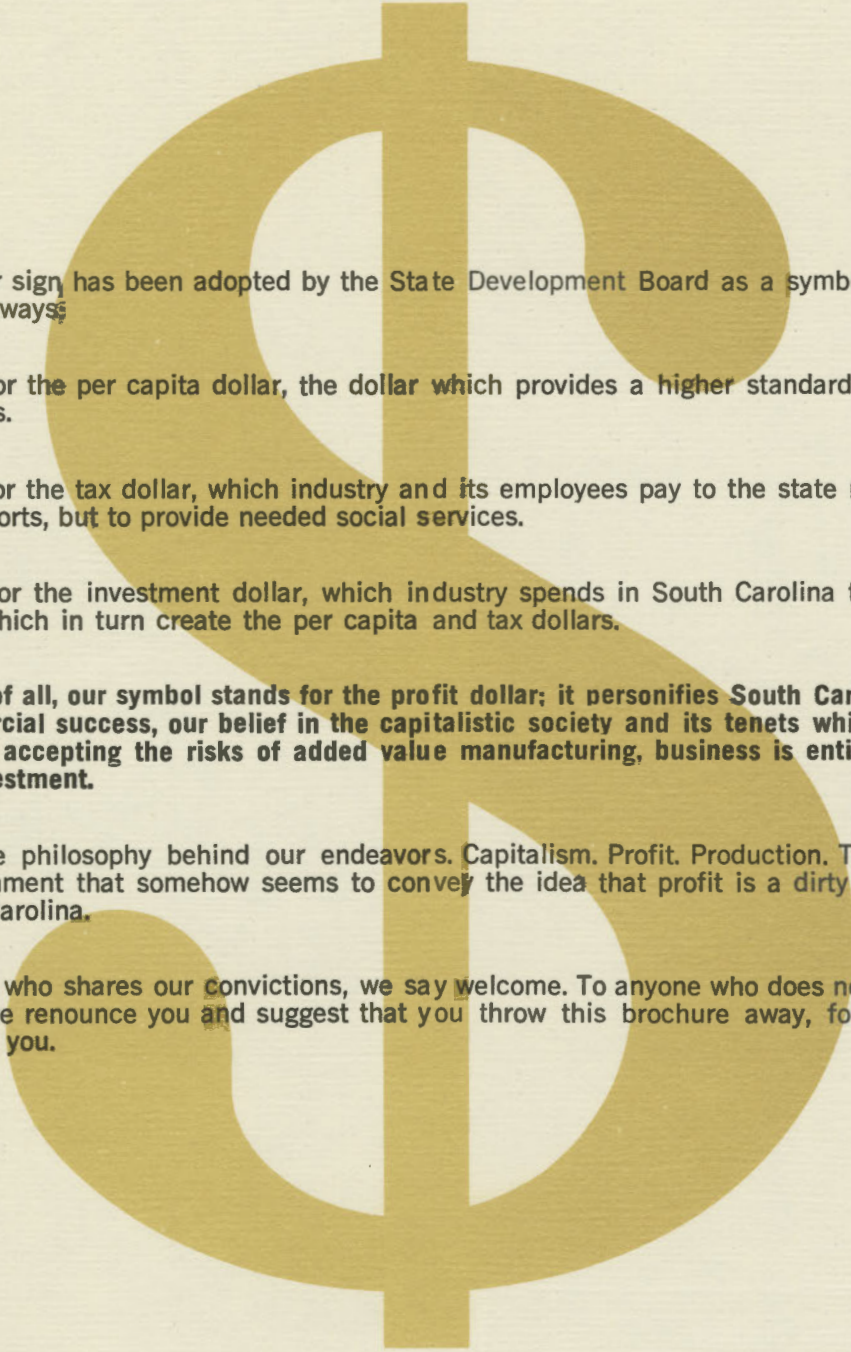
SUMTER

Sumter's city water system utilizes 10 deep wells to supply a maximum of 15,000,000 gallons of treated water a day. The peak daily demand on the system is 12,000,000 gallons, with an average daily demand of 6,000,000 gallons. Elevated storage facilities consist of two 250,000-gallon tanks and two 500,000-gallon tanks. Ground level storage facilities have a combined capacity of 3,485,000 gallons

CHEMICAL ANALYSIS

(parts per million except pH, unless noted)

Total solids	128
Alkalinity	30
Calcium	13.1
Magnesium	1.8
Hardness	4
Iron	0.1
Chloride	26
pH	6.3
Copper	0.1
Zinc	0.1
Mercury	0.1



The gold dollar sign has been adopted by the State Development Board as a symbol which can be interpreted in many ways:

It stands for the per capita dollar, the dollar which provides a higher standard of living for South Carolinians.

It stands for the tax dollar, which industry and its employees pay to the state not only to perpetuate our efforts, but to provide needed social services.

It stands for the investment dollar, which industry spends in South Carolina to create job opportunities, which in turn create the per capita and tax dollars.

But most of all, our symbol stands for the profit dollar; it personifies South Carolina's commitment to commercial success, our belief in the capitalistic society and its tenets which proclaim that in return for accepting the risks of added value manufacturing, business is entitled to a fair return on its investment.

This is the philosophy behind our endeavors. Capitalism. Profit. Production. To anyone trapped in an environment that somehow seems to convey the idea that profit is a dirty word, we say come to South Carolina.

To anyone who shares our convictions, we say welcome. To anyone who does not share similar convictions, we renounce you and suggest that you throw this brochure away, for we will be of no interest to you.