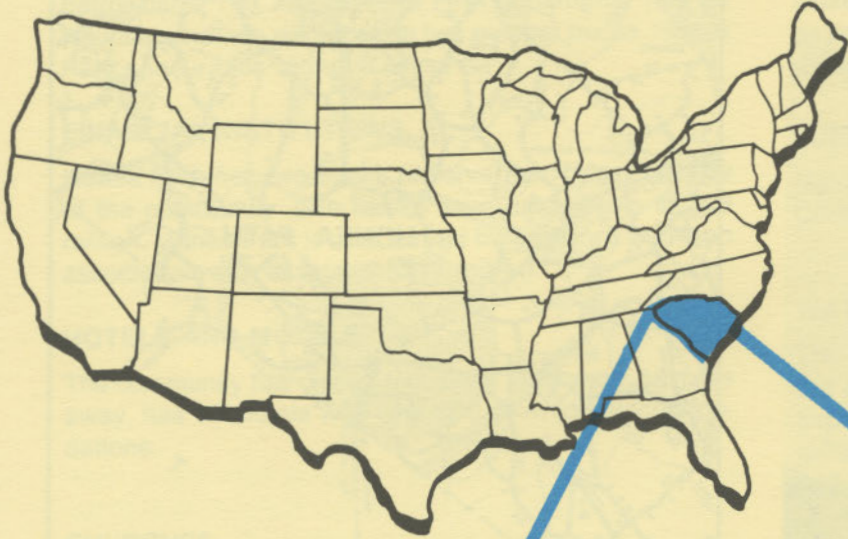


D4925
2.H55
1985
Copy 1

HONEA PATH

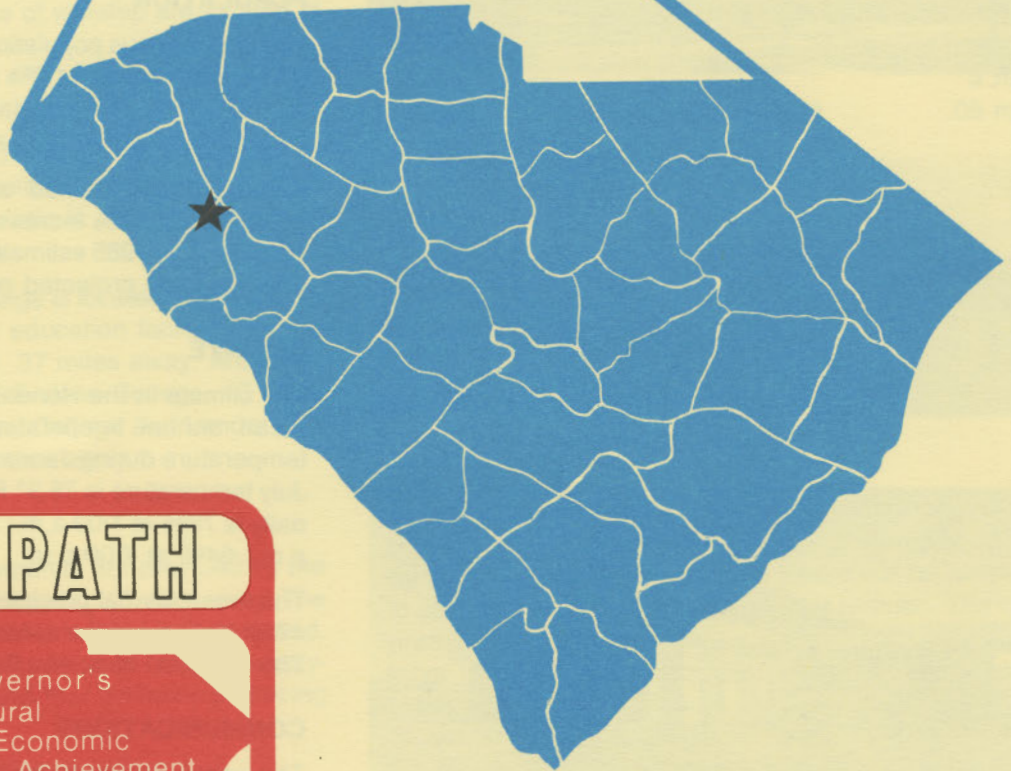
south carolina



S. C. STATE LIBRARY

OCT 3 1 1985

STATE DOCUMENTS



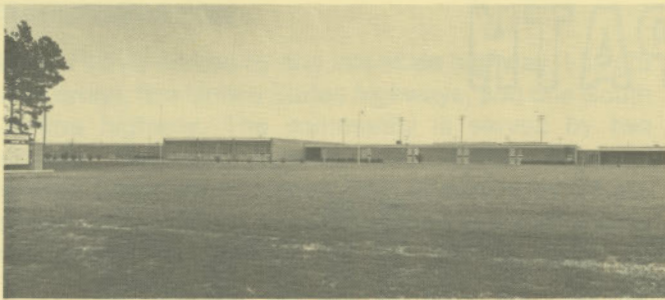
HONEA PATH

IS

A GREAT TOWN

Governor's
Rural
Economic
Achievement
Trophy

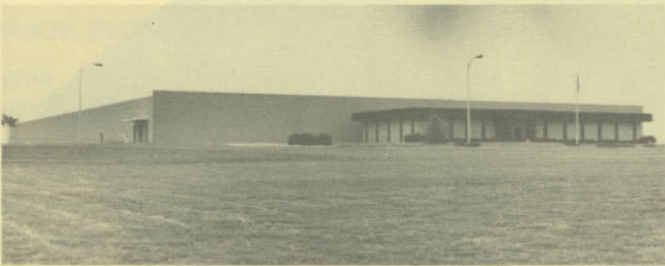
A red graphic of the state of South Carolina, with a white star marking the location of Honea Path. The text "Governor's Rural Economic Achievement Trophy" is written in white across the map.



Belton-Honea Path High School



First Baptist Church



Torrington Company



Anderson County Airport Terminal

LOCATION

As depicted on the cover, Honea Path is in the north-western section of the state in Anderson County. Charleston, South Carolina's busiest port, is 199 miles southeast. Columbia is 99 miles southeast and Greenville is 30 miles northeast. Honea Path is 138 miles northeast of Atlanta; 723 miles south of New York; and 2,661 miles east of San Francisco.



POPULATION

The 1980 census population of the city of Honea Path was 4,114. This was an 11.0% increase from the 1970 population of 3,707. The population within a 15-mile radius is 105,981 and within a 30-mile radius is 567,238.

Anderson County had a 1980 census population of 133,235, a 26.3% increase from the 1970 population of 105,474. The 1985 estimated county population is 150,200 and the 1990 projected population is 170,100.

CLIMATE

The climate in the Honea Path area is temperate with a mean annual temperature of 60.6° F. The average temperature during January is 42.3° F, while the average July temperature is 78.3° F. The average relative humidity daily is 78% at 1:00 a.m.; 82% at 7:00 a.m.; 54% at 1:00 p.m.; 64% at 7:00 p.m.

The mean annual precipitation in the Honea Path area is 47.54 inches and the average growing season is 221 days. The elevation of Honea Path is 810 feet above sea level.

COMMUNICATIONS

The weekly *Honea Path Chronicle* is published in the city, and two dailies circulate in the community. Radio station WRIX-FM provides local broadcast coverage. Television reception in the community is available from four stations, representing the three major networks. Telephone service in the community is provided by Southern Bell of BellSouth Corporation.

GOVERNMENT

The community has a mayor-council form of municipal government. The six city council members and the mayor are elected for four-year terms. Honea Path has a full-time city administrator. Anderson County is governed locally by a council-administrator, with the six council members elected to two-year terms.

POLICE AND FIRE

The Honea Path Police Department has ten full-time police officers. The department operates four radio equipped patrol cars. The Honea Path Fire Department has 21 volunteer firemen who operate two pumper trucks. Honea Path's insurance rating is Class 5.

FINANCIAL INSTITUTIONS

Honea Path has two banks to serve the financial needs of the community. The banks have total assets of \$93 million. Honea Path is also served by a savings and loan association with assets of \$217 million.

HOTELS AND MOTELS

The community has one 12-unit motel. Anderson, 16 miles away, has 15 motels with over 500 overnight accommodations.

CHURCHES

Honea Path has ten Protestant churches. Two Catholic churches and a Jewish house of worship are located in Anderson, 16 miles away.

EDUCATION

Honea Path, which is included in Anderson District 2, has two elementary schools; one middle school; and one high school. The student/teacher ratio is 18.3 to 1, with 110 teachers and 2,010 students.

The Tri-County Technical College is located at Pendleton, 33 miles away. Other higher education facilities for the area are Clemson University, 37 miles away; Anderson College, 16 miles away; and Erskine College, 10 miles away. The Piedmont Technical College and Lander College are in Greenwood, 23 miles away.

MEDICAL SERVICES

Medical services for the community are provided by the 531-bed Anderson Memorial Hospital, 16 miles away. The 375-bed Self Memorial Hospital is located in Greenwood, 23 miles away. The community has five privately-practicing medical doctors and four privately-practicing dentists.

RECREATION AND CIVIC FACILITIES

Recreation facilities in the community consist of two parks with outdoor cooking and picnic facilities, several school playgrounds and athletic fields. Several country clubs and golf courses are located within 29 miles of the city. Lake Hartwell, 20 miles away, and Lake Greenwood, 15 miles

away, provide areas for fishing, boating, swimming and other forms of family recreation. The Sumter National Forest provides public hunting areas. Anderson, 16 miles away, offers theaters, bowling and a little theater group.

POWER

Electric power is available to the community and surrounding areas from Duke Power Company. Duke Power, the nation's eighth-largest investor-owned operating electric utility, provides installation of service to industrial customers at no cost to the customer in most cases.

Duke Power Company representatives are available to assist industrial prospects at no cost or obligation in analyzing their electricity needs.

FUELS

Natural gas is supplied by Piedmont Natural Gas Company.

WATER

The community obtains its municipal water supply from the Belton-Honea Path Water Authority. The system is capable of supplying water at a maximum rate of 4.0 million gpd. Honea Path has an average daily demand of 600,000 gallons. Treated water storage in Honea Path consists of 625,000 gallons in elevated storage.

Analysis of water supplied in the community:

Total solids	320 mg/L
Alkalinity	10 mg/L
Calcium	2.1 mg/L
Hardness	9 mg/L
Iron	.05 mg/L
pH	6.9

SEWER

Honea Path uses four oxidation lagoons to dispose of the community's wastewater. These lagoons have maximum capacities of 420,000; 62,000; 450,000; and 17,000 gallons per day. Average daily flows are 270,000; 37,000; 490,000; and 16,000 gallons, respectively.

LABOR

Because labor information may change in this area, a current labor availability report prepared and kept up to date by the S. C. State Development Board will be furnished to prospective manufacturers at their request. The comprehensive report will include sources of recruitable labor, labor force characteristics, work force skill levels, earnings data and other pertinent information. The S. C. State Board for Technical and Comprehensive Education has the resources to recruit and train workers in accordance with a company's entry criteria. This training is at little or no cost to the employer. A lead-time schedule is developed to coordinate recruiting, testing, selecting, and training. This assures that persons will be able to move from training to their respective jobs at the time the plant is ready for initial production.

TRANSPORTATION

Honea Path is served by one interstate highway, I-85 (25 miles away), two United States highways, and one South Carolina highway. The community is served by two railroads: Seaboard System, and Norfolk Southern Railroad Corporation. Honea Path is served by 36 authorized motor carriers, six of which have terminal facilities in Anderson.

Freight Delivery Times:

To:	By Rail:	By Truck:
Atlanta	2 days	1 day
Baltimore	3 days	3 days
Chicago	4 days	3 days
Houston	6 days	3 days
New York	4 days	4 days
St. Louis	4 days	4 days
San Francisco	6 days	5 days

The Anderson County Airport, 19 miles away, offers commuter service on Bankair. The Greenville-Spartanburg Airport, 50 miles away, offers regularly scheduled commercial airline service on American, Piedmont, Bankair, Eastern, Sunbird, Delta and U.S. Air. Private aircraft also utilize the Anderson County Airport, which has a 5,000-foot paved and lighted runway and a 5,000-foot paved runway. Services available at the Anderson County Airport include RBn; major airframe and major powerplant repairs; 100LL, Jet A and A1 fuel; Unicom; and Vortac.

FOREIGN TRADE ZONE

A Foreign Trade Zone is located in Summerville, South

Carolina, 25 miles from the Port of Charleston and 174 miles from the community. The Foreign Trade Zone allows manufacturers to store, manufacture, or process goods without paying U.S. Customs duties or worrying about quota compliance. This Foreign Trade Zone is served by a multimode transportation network which provides excellent accessibility to market areas.

TAXES

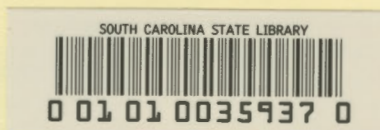
The assessment on industrial property in South Carolina is 10.5% of the market value. New industry is granted a five-year moratorium on general county taxes (with the exception of school taxes). The city tax rate is \$6.40 per \$100 of assessed value. The county rate is \$11.40 per \$100 of assessed value. The effective city tax rate (tax liability per \$100 of market value) is \$.67. The effective county rate is \$1.20. The state has no tax on a manufacturers' inventories, goods-in-process, raw materials or finished goods. Treatment facilities or equipment of manufacturing plants which control water or air pollution are exempt from all property taxation.

INDUSTRIAL SITES

Industrial sites are available in Honea Path with a wide range of geographic and topographic features. In all probability, a site that will meet the needs of most industries' requirements has been identified, catalogued, and entered into the State Development Board's Computerized Site Selection System. Detailed site information is available and will be furnished upon request.

MAJOR EMPLOYERS

Name	Product or Service	Employees
Deseret Medical, Inc.	Surgical rubber gloves	275
Honea Path Shirt Makers, Inc.	Shirts and blouses	175
M. Lowenstein Corp.	Sheeting	583
Milliken and Company	Synthetic fabrics	119
Torrington Company	Screw machine parts	445



For Additional Information Contact:

SOUTH CAROLINA STATE DEVELOPMENT BOARD
P. O. Box 927, Columbia, South Carolina 29202
(803) 758-3145