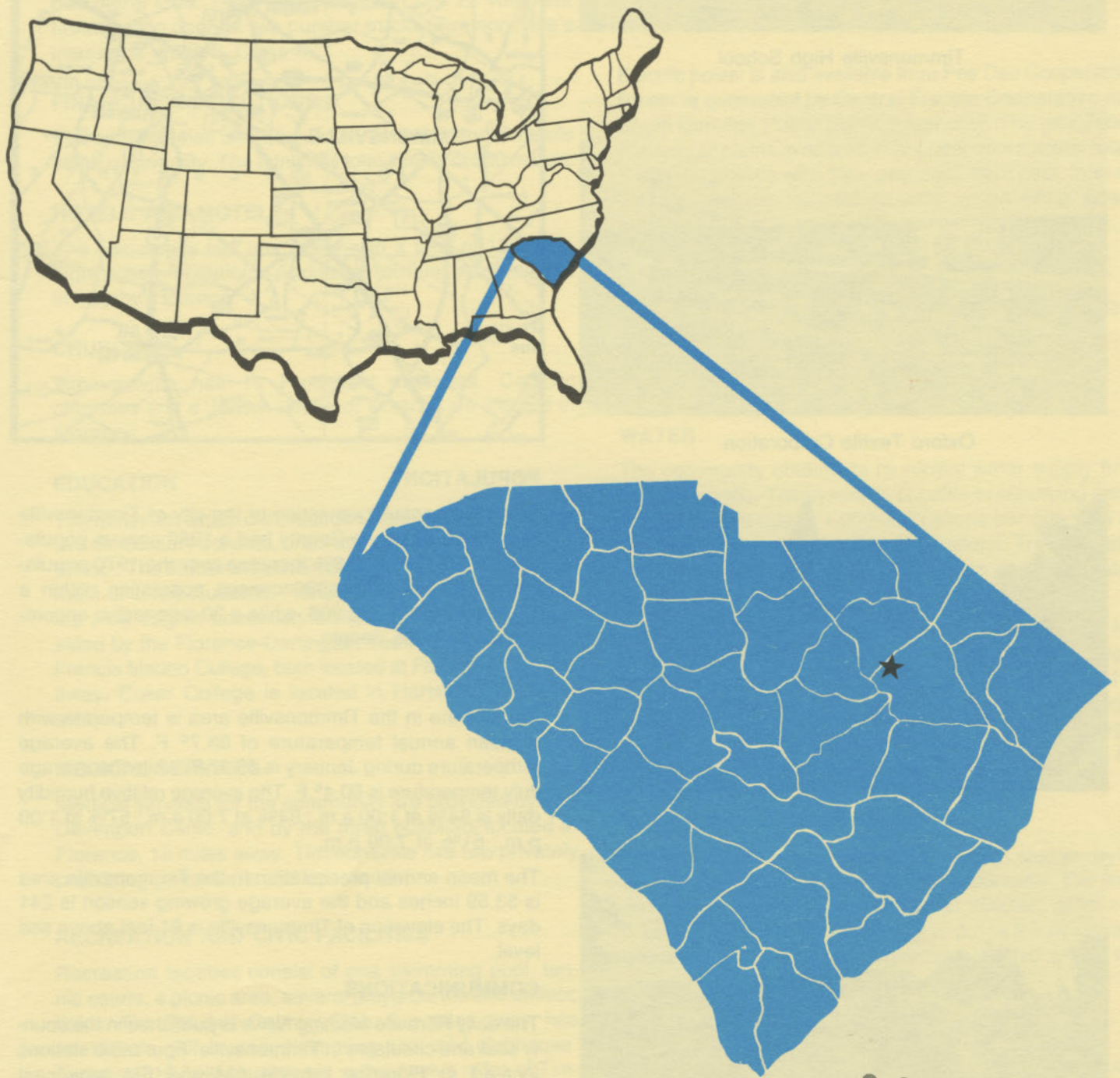


D4925
2.T45

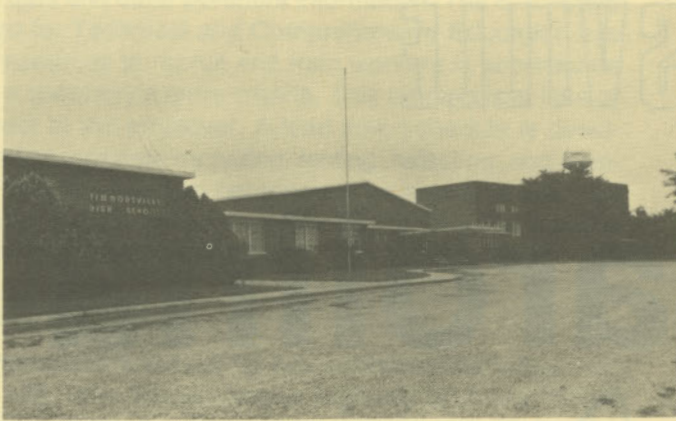
TIMMONSVILLE

south carolina

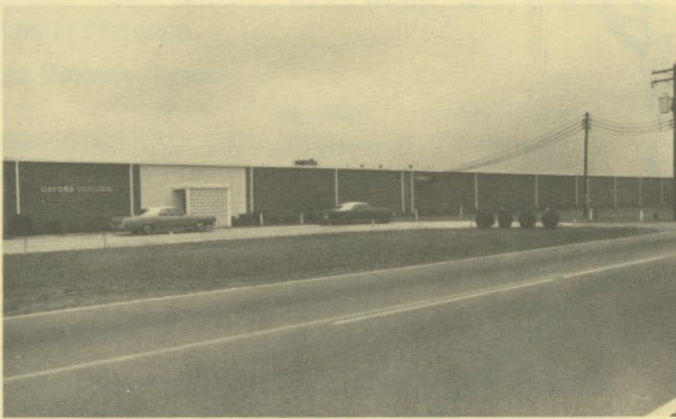


For Additional Information Contact:
SOUTH CAROLINA STATE DEVELOPMENT BOARD
P. O. Box 927, Columbia, South Carolina 29202
(803) 758-3145

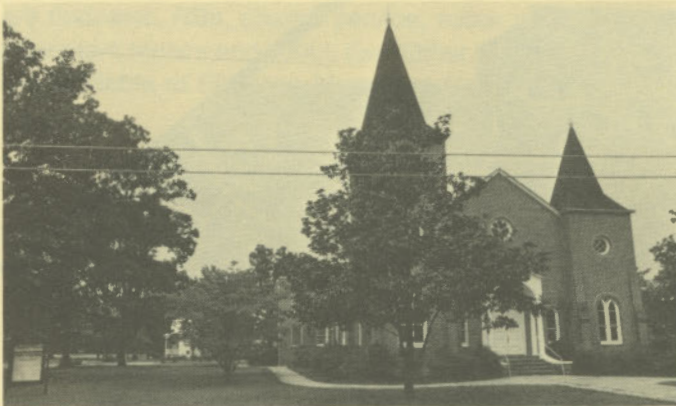
S. C. STATE LIBRARY
FEB 25 1983
STATE DOCUMENTS



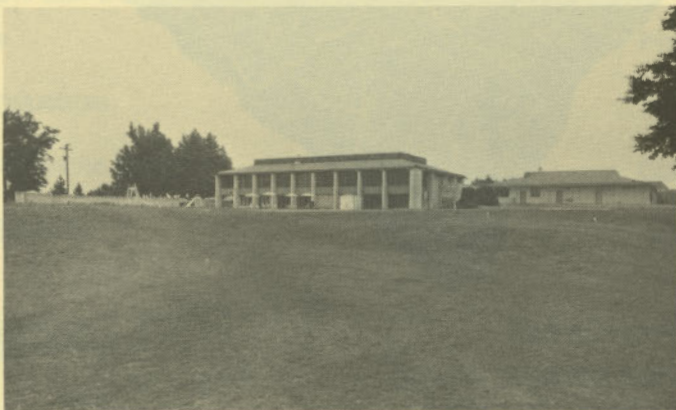
Timmonsville High School



Oxford Textile Corporation



Timmonsville Baptist Church



Oakdale Country Club

LOCATION

As depicted on the cover, Timmonsville is in the north-eastern section of the state in Florence County. Charleston, South Carolina's busiest port, is 110 miles south. Columbia is 71 miles west and Greenville is 172 miles northwest. Timmonsville is 284 miles east of Atlanta; 639 miles south of New York; and 2,807 miles east of San Francisco.



POPULATION

The 1980 census population of the city of Timmonsville was 2,112. Florence County had a 1980 census population of 110,163, a 22.9% increase over the 1970 population of 89,636. The 1980 census population within a 15-mile radius is 106,206, while a 30-mile radius encompasses 263,955 people.

CLIMATE

The climate in the Timmonsville area is temperate with a mean annual temperature of 63.7° F. The average temperature during January is 46.4° F, while the average July temperature is 80.4° F. The average relative humidity daily is 84% at 1:00 a.m.; 84% at 7:00 a.m.; 57% at 1:00 p.m.; 61% at 7:00 p.m.

The mean annual precipitation in the Timmonsville area is 53.59 inches and the average growing season is 241 days. The elevation of Timmonsville is 91 feet above sea level.

COMMUNICATIONS

The daily *Florence Morning News* is published in the county seat and circulates in Timmonsville. Four radio stations located at Florence provide AM and FM broadcast facilities. Television reception in the community is available from four stations, representing the three major networks and educational television. Telephone service is provided by the Southern Bell Telephone and Telegraph Company.

GOVERNMENT

The community has a mayor-council form of municipal government. The six city councilmen and the mayor are elected for four-year terms. Florence County is governed locally by a nine-member council-administrator form of government. Council members are elected for four-year terms.

POLICE AND FIRE

The Timmons ville Police Department has six full-time police officers. The department operates two radio equipped patrol cars. The Fire Department has 22 volunteer firemen who operate two pumper trucks. Timmons ville's insurance rating is Class 8.

FINANCIAL INSTITUTIONS

Timmons ville has one bank to serve the financial needs of the community. The bank has total assets of \$30 million.

HOTELS AND MOTELS

The community has one motel with a total of 120 overnight accommodations. Additional facilities are available in nearby Florence.

CHURCHES

Timmons ville has 15 Protestant churches. Catholic churches and a Jewish house of worship are located in Florence.

EDUCATION

Timmons ville, which is included in Florence District 4, has two elementary schools, one middle school and one high school. The student/teacher ratio is 21.2 to 1, with enrollment of 1,426 students. Private schooling is available in the area. Higher education facilities for the area are provided by the Florence-Darlington Technical College and Francis Marion College, both located at Florence, 12 miles away. Coker College is located in Hartsville, 25 miles away.

MEDICAL SERVICES

Medical services for the community are provided by The Davenport Clinic, and by the three hospitals located in Florence, 12 miles away. Timmons ville has two privately practicing physicians and one dentist.

RECREATION AND CIVIC FACILITIES

Recreation facilities consist of one swimming pool, tennis courts, a picnic area, several playgrounds and athletic fields. The Oakdale Country Club, five miles away, has an 18-hole golf course, swimming pool and clubhouse. Two more 18-hole courses are within twelve miles of Timmons ville. Theaters, bowling alleys, dramatic performances, museums and other forms of recreation and entertainment are provided in Florence, 12 miles from Timmons ville. The area has excellent hunting and fishing. Timmons ville is 80 miles from several coastal resorts.

POWER

Electric power is supplied by Carolina Power & Light Company (CP&L). CP&L has firm generation capacity of 8,000 megawatts and forecasts sufficient reserves to accommodate industrial growth in its service area. Economical power from nuclear energy accounts for a major portion of CP&L's generation and serves to keep the company's rates below the national average. Usually CP&L will install, at no cost to the customer, the necessary equipment to supply the electrical requirements. Alternative rate schedules are available to the industrial customer with the most economical rate for a specific application determined by the characteristics of the user's consumption.

Electric power is also available from Pee Dee Cooperative. Power is generated by Central Electric Cooperative and South Carolina Public Service Authority. The generation capacity of plants in operation or under construction totals 3,435 megawatts with 73% produced from coal. Inter-tie connections are maintained with neighboring power supplies.

FUELS

Natural gas is supplied by the Peoples Natural Gas Company.

WATER

The community obtains its municipal water supply from two deep wells. The system is capable of supplying water at a maximum rate of 1,000,000 gallons per day, with an average daily demand of 360,000 gallons. Treated water storage consists of one 375,000-gallon elevated tank.

Analysis of water supplied in the community:

| | |
|--------------|---------|
| Total solids | NA |
| Alkalinity | 23 mg/L |
| Calcium | NA |
| Hardness | 23 mg/L |
| Iron | .2 mg/L |
| pH | 7.2 |

SEWER

Timmons ville utilizes an Imhoff tank with sludge drying beds to dispose of the community's wastewater. The present system has a daily capacity for 250,000 gallons of wastewater. Plans are underway to put in a new sewage treatment system with completion expected within two years.

LABOR

Because labor information may change in this area, a current labor availability report prepared and kept up to date by the S. C. State Development Board will be furnished to prospective manufacturers at their request. The comprehensive report will include sources of recruitable labor, labor force characteristics, work force skill levels, earn-

ings data and other pertinent information. The S. C. State Board for Technical and Comprehensive Education has the resources to recruit and train workers in accordance with a company's entry criteria. This training is at little or no cost to the employer. A lead-time schedule is developed to coordinate recruiting, testing, selecting, and training. This assures that persons will be able to move from training to their respective jobs at the time the plant is ready for initial production.

TRANSPORTATION

Timmons ville is served by two interstate highways, I-20 and I-95, one United States highway and one South Carolina highway. The community is served by the Seaboard Coast Line Railroad. Timmons ville has 36 authorized motor carriers, 18 of which have terminal facilities in Florence.

Freight Delivery Times:

| To: | By Rail: | By Truck: |
|---------------|----------|-----------|
| Atlanta | 3 days | 1 day |
| Boston | 6 days | 4 days |
| Chicago | 6 days | 3 days |
| Houston | 9 days | 2 days |
| New York | 4 days | 3 days |
| St. Louis | 6 days | 2 days |
| San Francisco | 12 days | 5 days |

The Florence Municipal Airport, 15 miles from the community, offers regularly scheduled commuter airline service on Atlantis Airlines. Private aircraft utilize the Huggins Airpark, one mile away. Services available at the local field are tiedowns, RBn, charter service, minor airframe and powerplant repairs and 100LL fuel. Other aviation services are available at Florence Municipal Airport.

MAJOR EMPLOYERS

| Name | Product or Service | Employees |
|----------------------|--|-----------|
| A-Q Industries | Tricot and warp knit fabrics | 150 |
| Oxford Textile Corp. | Curtains, draperies and bedspreads | 100 |
| Star Systems | Liquid filtering machines, sight glasses | 65 |

FOREIGN TRADE ZONES

There are two Foreign Trade Zones located in South Carolina, one located in Charleston, 110 miles away, and the other located at the Greenville/Spartanburg Jetport, 172 miles away. These Foreign Trade Zones allow manufacturers to store, manufacture or process goods without paying U. S. Customs duties or worrying about quota compliance. Both Foreign Trade Zones are served by a multi-mode transportation network which provides excellent accessibility to market areas.

TAXES

The assessment on industrial property in South Carolina is 10.5% of the market value. New industry is granted a five-year moratorium on general county taxes (with the exception of school taxes). The city tax rate is \$6.73 per \$100 of assessed value. The county rate is \$10.36 per \$100 of assessed value. The effective city tax rate (tax liability per \$100 of market value) is \$.71. The effective county rate is \$1.09. The state has no tax on a manufacturer's inventories, goods-in-process, raw materials or finished goods. Treatment facilities or equipment of manufacturing plants which control water or air pollution are exempt from all property taxation.

INDUSTRIAL SITES

Industrial sites are available in Timmons ville with a wide range of geographic and topographic features. In all probability, a site that will meet the needs of most industries' requirements has been identified, catalogued, and entered into the State Development Board's Computerized Site Selection System. Detailed site information is available and will be furnished upon request.

