

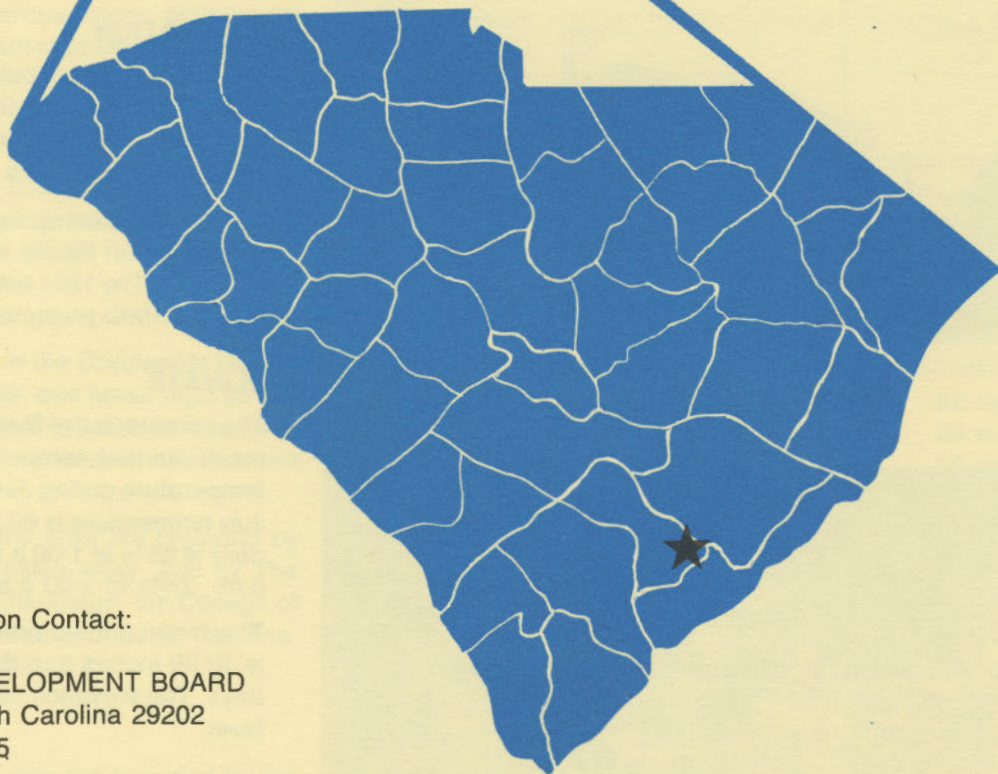
D4925
2.585
1983

SUMMERVILLE

south carolina



S. C. STATE LIBRARY
JAN 16 1984
STATE DOCUMENTS

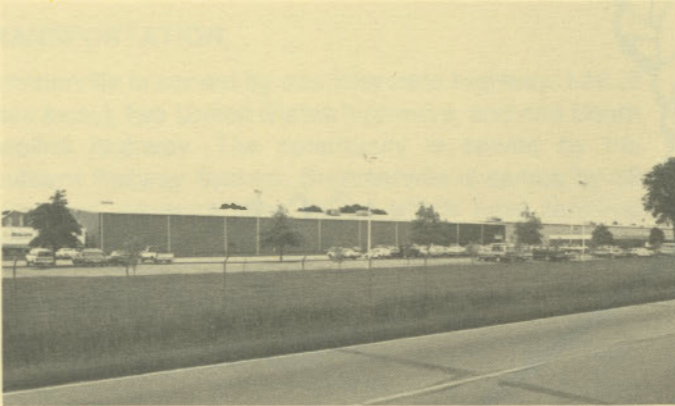


For Additional Information Contact:

SOUTH CAROLINA STATE DEVELOPMENT BOARD
P.O. Box 927 Columbia, South Carolina 29202
(803) 758-3145



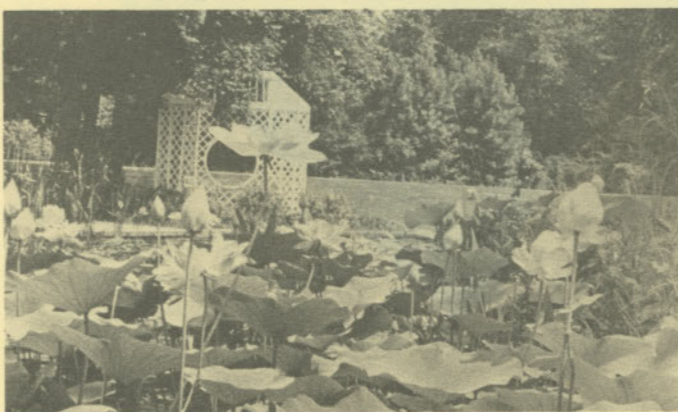
Carolina Trade Zone



Exxon Chemical Americas



Summerville Town Hall



Summerville Town Park

LOCATION

As depicted on the cover, Summerville is in the southeastern section of the state in Dorchester County. Charleston, South Carolina's busiest port, is 15 miles southeast. Columbia is 95 miles northwest and Greenville is 195 miles northwest. Summerville is 278 miles east of Atlanta; 725 miles south of New York; and 2,801 miles east of San Francisco.



POPULATION

The 1980 census population of the city of Summerville was 6,368. This was a 65.9% increase from the 1970 census of 3,839. The population within a 15-mile radius is 166,713, and within a 30-mile radius is 432,530.

Dorchester County had a 1980 census population of 58,266, — an 80.5% increase over the 1970 population of 32,276. The 1981 estimated county population is 60,600 and the 1990 projected population is 89,600.

CLIMATE

The climate in the Summerville area is temperate with a mean annual temperature of 64.7° F. The average temperature during January is 48.6° F, while the average July temperature is 80.2° F. The average relative humidity daily is 86% at 1:00 a.m.; 86% at 7:00 a.m.; 56% at 1:00 p.m.; 74% at 7:00 p.m.

The mean annual precipitation in the Summerville area is 49.99 inches and the average growing season is 239 days. The elevation of Summerville is 71 feet above sea level.

COMMUNICATIONS

The semi-weekly *Journal-Scene* is published in the city, and three large dailies circulate in the area. Radio stations WAZS-AM and WWVZ-FM have broadcast facilities

in the community. Television reception in the community is available from four stations, representing the three major networks and educational television. Telephone service in the community is provided by the Southern Bell Telephone and Telegraph Company.

GOVERNMENT

The community has a council form of municipal government. The town's six city council members and the mayor are elected for four-year terms. Dorchester County is governed locally by a seven-member county council, whose members are elected for four-year terms.

POLICE AND FIRE

The Summerville Police Department has 12 full-time police officers. The department operates seven radio equipped patrol cars. The Summerville Fire Department has 15 full-time and 30 volunteer firemen who operate four pumper trucks and two tankers. Summerville's insurance rating is Class 6.

FINANCIAL INSTITUTIONS

Summerville has three banks and two savings and loan associations to serve the financial needs of the community. The banks have total assets of \$5.2 billion, while the savings and loans have assets of \$996 million.

HOTELS & MOTELS

The community has three motels with a total of 260 overnight accommodations. Numerous other motels are located in the vicinity of the Charleston Municipal Airport, 12 miles away.

CHURCHES

Summerville has 32 Protestant churches and a Catholic church located in the city. A Jewish house of worship is located in Charleston, 20 miles away.

EDUCATION

Summerville, which is included in the Dorchester District 2, has seven elementary schools, one junior high school and two high schools. The student/teacher ratio is 23 to 1, with 477 teachers and 10,959 students. In addition, two private schools serve the area.

Higher education facilities for the area are provided by Trident Technical College, 12 miles away, and by The Citadel, the Baptist College at Charleston, the College of Charleston, and the Medical University of South Carolina, all within 20 miles of Summerville.

MEDICAL SERVICES

Medical services for the community are provided by the North Trident Regional Hospital, located near the city. This modern facility has 220 beds. Other medical facilities are available in nearby Charleston. The community is served by 22 medical doctors and 19 dentists.

RECREATION AND CIVIC FACILITIES

Summerville has two fully-equipped playgrounds open to the public, as well as a football field, 2 baseball parks with lights, and tennis courts, many of which are lighted. The Summerville Community Building is available for use by all groups/organizations within the Greater Summerville Community. Nearby Charleston offers a great variety of cultural activities, as well as water sports.

POWER

Electric power is available to the community and surrounding areas from South Carolina Electric & Gas and Berkeley Electric Cooperative. For 1984 SCE&G projects reserve capacity to system coincidental peak of 32%. The company's total generating capacity is 3,959 megawatts. An additional 500 megawatts of coal fired generation is scheduled for 1989. SCE&G plans to have sufficient reserves to meet immediate and future electrical needs of its service area. In addition, SCE&G maintains inter-tie connections with four neighboring utilities.

Electric power is also available from Berkeley Electric Cooperative. Power is generated by Central Electric Cooperative and South Carolina Public Service Authority. The generation capacity of plants in operation or under construction totals 3,435 megawatts with 73% produced from coal. Inter-tie connections are maintained with neighboring power supplies.

FUELS

Natural gas is supplied by South Carolina Electric & Gas Company.

WATER

The Commissioners of Public Works of Summerville obtain the municipal water supply from the Edisto River. The filter plant is capable of supplying water at a maximum rate of 1 million gpd, with a daily demand of 2.5-3.0 million gallons. A 16-inch main connects Summerville's water system with the 92 million gpd Charleston water system.

Analysis of water supplied in the community:

Total solids	82 mg/L
Alkalinity	28 mg/L
Calcium	10 mg/L
Hardness	29 mg/L
Iron	0.1 mg/L
pH	7.8

SEWER

Summerville has a seven-acre and a 13-acre oxidation pond to dispose of wastewater. The system has been upgraded to use microscreens. The two ponds are interconnected and have a combined daily capacity of 6,000,000 gallons. Daily flows average 2.5 million gallons.

LABOR

Because labor information may change in this area, a cur-

rent labor availability report prepared and kept up to date by the S. C. State Development Board will be furnished to prospective manufacturers at their request. The comprehensive report will include sources of recruitable labor, labor force characteristics, work force skill levels, earnings data and other pertinent information. The S. C. State Board for Technical and Comprehensive Education has the resources to recruit and train workers in accordance with a company's entry criteria. This training is at little or no cost to the employer. A lead-time schedule is developed to coordinate recruiting, testing, selecting, and training. This assures that persons will be able to move from training to their respective jobs at the time the plant is ready for initial production.

TRANSPORTATION

Summerville is served by one interstate highway, I-26 (2 miles away), two United States highways, and one South Carolina highway. The community is served by the Southern Railway System. Summerville is served by 32 authorized motor carriers, 26 of which have terminal facilities in nearby Charleston.

Freight Delivery Times:

To:	By Rail:	By Truck:
Atlanta	3 days	1 day
Boston	6 days	4 days
Chicago	7 days	3 days
Houston	8 days	3 days
New York	4 days	3 days
St. Louis	5 days	2 days
San Francisco	11 days	5 days

Private aircraft utilize the Summerville Airport, two miles away, which has a lighted 3,900-foot turf landing strip. Complete airport facilities are available at Charleston In-

ternational Airport, 12 miles away, with regularly scheduled commercial airline service on Delta, Eastern, Piedmont and Bankair.

FOREIGN TRADE ZONE

There is a Foreign Trade Zone in South Carolina, located here in Summerville. The Foreign Trade Zone allows manufacturers to store, manufacture or process goods without paying U.S. Customs duties or worrying about quota compliance. This Foreign Trade Zone is served by a multi-mode transportation network which provides excellent accessibility to market areas.

TAXES

The assessment on industrial property in South Carolina is 10.5% of the market value. New industry is granted a five-year moratorium on general county taxes with the exception of school taxes. The city tax rate is \$6.80 per \$100 of assessed value. The county rate is \$11.15 per \$100 of assessed value. The effective city tax rate (tax liability per \$100 of market value) is \$.71. The effective county rate is \$1.17. The state has no tax on a manufacturer's inventories, goods-in-process, raw materials or finished goods. Treatment facilities or equipment of manufacturing plants which control water or air pollution are exempt from all property taxation.

INDUSTRIAL SITES

Industrial sites are available in Summerville with a wide range of geographic and topographic features. In all probability, a site that will meet the needs of most industries' requirements has been identified, catalogued, and entered into the State Development Board's Computerized Site Selection System. Detailed site information is available and will be furnished upon request.

MAJOR EMPLOYERS

Name	Product or Service	Employees
Airco Carbon	Graphite electrodes	115
Exxon Chemical Americas	Woven polypropylene fabric	495
Kores Nordic U.S.A.	Ribbons-word processing	190
Robert Bosch Corp.	Fuel injection pumps	691
Wellington Home Products	Chair pads, picnic bags	56
Westvaco	Lumber	147

