

# SCSL Digital Collections

## Commuting Patterns: Chesterfield County

Item Type	Text
Rights	Copyright status determined to be in the public domain on April 27, 2020 by United States Supreme Court ruling (Georgia et al., Petitioners v. Public.Resource.Org, Inc. : 590 U.S.__(2020))
Download date	2024-09-07 10:33:37
Link to Item	<a href="https://dc.statelibrary.sc.gov/handle/10827/40066">https://dc.statelibrary.sc.gov/handle/10827/40066</a>

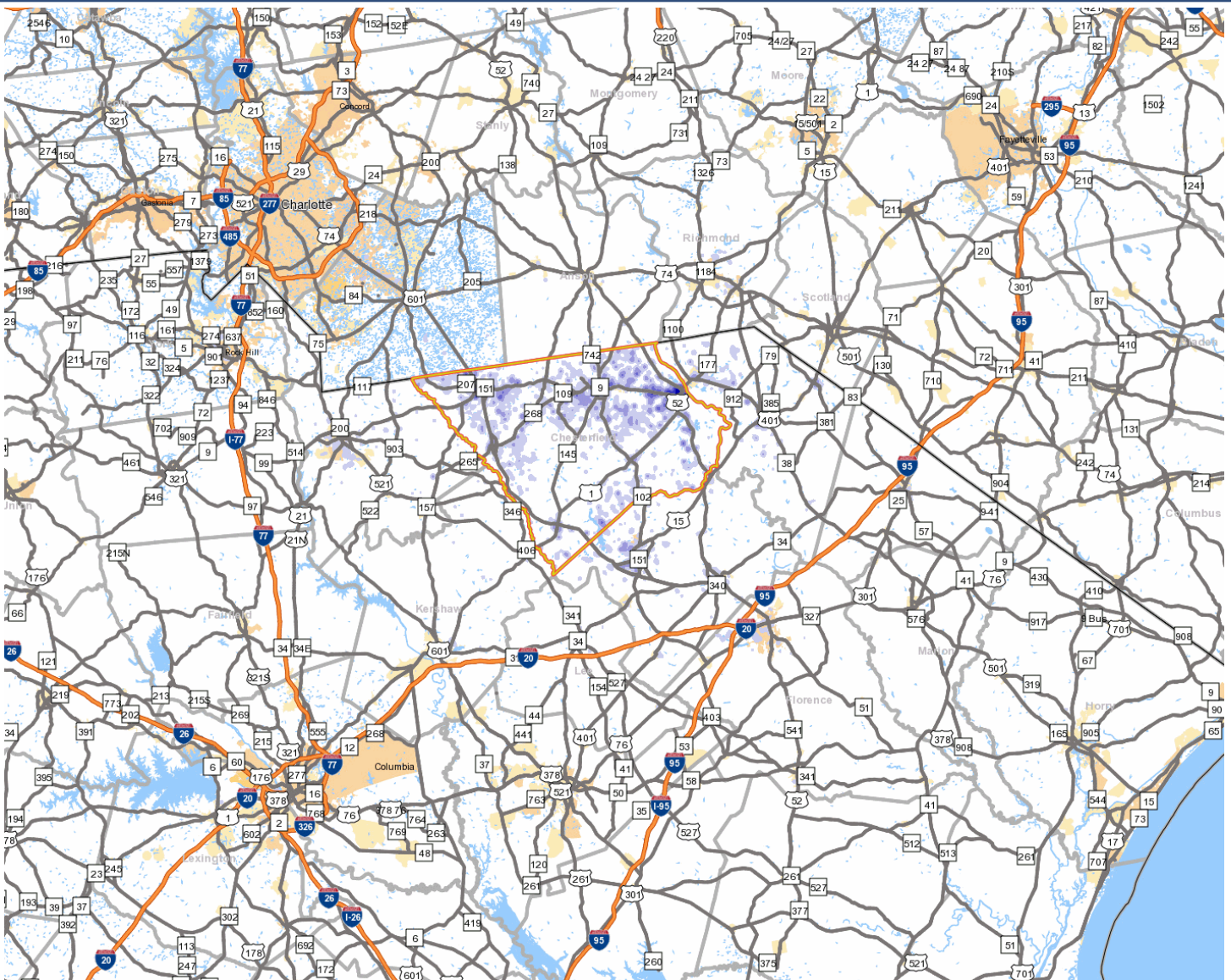
**Chesterfield County**

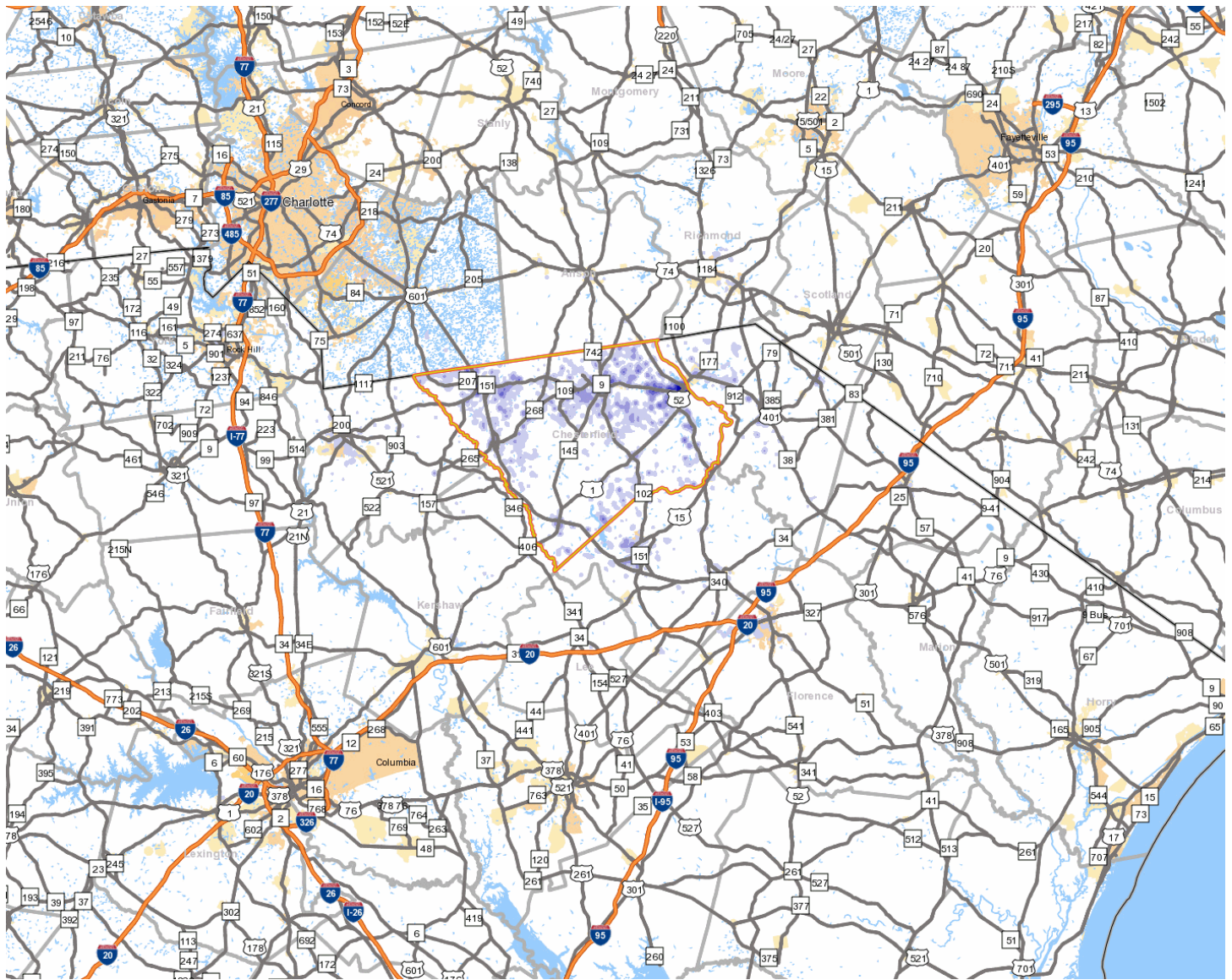
County Seat: Chesterfield

Website: [www.chesterfieldcountysc.com](http://www.chesterfieldcountysc.com)

**Where Workers Who Live in Chesterfield County Work**

% of Workers	Work in County	State
42.80%	Chesterfield County	South Carolina
7.20%	UNION COUNTY	North Carolina
7.20%	Darlington County	South Carolina
5.00%	Richland County	South Carolina
4.60%	MECKLENBURG COUNTY	North Carolina
4.10%	Florence County	South Carolina
3.10%	Marlboro County	South Carolina
2.80%	York County	South Carolina
1.90%	Lancaster County	South Carolina
1.70%	Lexington County	South Carolina
19.70%	All Other Counties	South Carolina





**Where Workers Who Work in Chesterfield County Live**

% of Workers	Work In County	State
52.00%	Chesterfield County	South Carolina
7.30%	Marlboro County	South Carolina
6.80%	Darlington County	South Carolina
3.50%	Lancaster County	South Carolina
2.60%	UNION COUNTY	North Carolina
2.30%	Kershaw County	South Carolina
2.20%	Florence County	South Carolina
2.20%	Horry County	South Carolina
1.50%	Spartanburg County	South Carolina
1.40%	RICHMOND COUNTY	North Carolina
18.30%	All Other Counties	South Carolina

Source: U.S. Census Bureau (Local Employment Dynamics)