

## See it. Report it.

Illegally dumped tires collect rainwater and provide a breeding ground for mosquitoes that transmit illness.

The piles also are a fire hazard. Tire fires – which are extremely difficult to extinguish – release toxic air pollutants and create oil that can contaminate nearby water.

The **See It, Report It** campaign focuses on asking residents to do their part by reporting any illegal tire dumping in their community. All information is held in strict confidence and the caller's identity is not released.

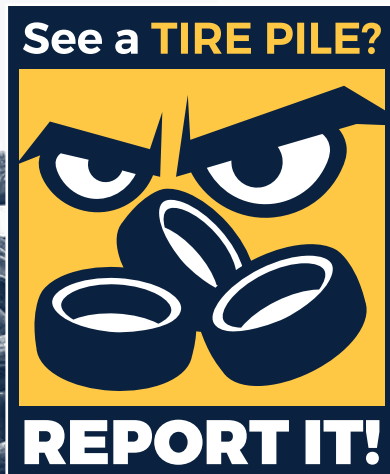
Residents can report a tire pile by calling the number or visiting website below.

**1-877-7LITTER**

**[www.palmettopride.org](http://www.palmettopride.org)**

*(Click on Report a Litterbug.)*

To learn more about the campaign, visit **[www.scdhec.gov/tires](http://www.scdhec.gov/tires)**.



Clarendon County Recycling  
194 Walker Street  
Manning, SC 29102



# RECYCLE YOUR TIRES

**A Guide for  
Clarendon County  
Residents**



**CLARENDON COUNTY RECYCLING**  
**[www.clarendoncounty.sc.gov](http://www.clarendoncounty.sc.gov)**

# Tires must be recycled.

## In South Carolina, IT'S THE LAW.

It's also easy and convenient. Here are your options.

- 1. LEAVE THEM WITH TIRE RETAILER.** When you buy new tires, leave the old tires with the dealer – who has them recycled.
- 2. TAKE THEM TO A CLARENDON COUNTY RECYCLING CENTER.** The county has 12 centers that accept tires from residents. Visit [www.scdhec.gov/recycleheresc](http://www.scdhec.gov/recycleheresc) or call the county's recycling coordinator at **(803) 825-7104** To find the site nearest you. The limit is four tires per visit.

These centers **ARE NOT FOR COMMERCIAL USE**, but only for county residents.



## Clarendon County Recycling Centers

**Sites 1-4** are OPEN Tuesday, Thursday and Saturday from 7 a.m. to 7 p.m.

- 1 FORESTON** – 7598 Brewer Rd., Manning – (803) 505-6607
- 2 OAKDALE** – 10752 Black River Rd., Gable – (803) 382-4143
- 3 PANOLA** – 4773 Governor Richardson Rd., Summerton – (803) 478-9839
- 4 SARDINIA** – 14091 Hwy. 301 N., Sardinia – (803) 505-6020

**Sites 5-6** are OPEN Monday, Wednesday, Friday and Saturday, 7 a.m. to 7 p.m. and Tuesday, Thursday and Sunday, 2 p.m. to 7 p.m.

- 5 JUNE BURN** – 1332 June Burn Rd., Manning – (803) 473-3922
- 6 LANDFILL** – 2475 J.W. Rhames Rd., Manning – (803) 473-5263

**Sites 7-8** are OPEN Monday through Saturday, 7 a.m. to 7 p.m. and Sunday, 2 p.m. to 7 p.m.

- 7 JORDAN** – 1818 Bonanza Crossing Rd., Manning – (803) 478-4645
- 8 DAVIS STATION** – 1618 Moses Dingle Rd., Davis Station – (803) 478-5442

**Sites 9-12** are OPEN Monday, Wednesday, Friday and Saturday, 7 a.m. to 7 p.m. and Sunday, 2 p.m. to 7 p.m.

- 9 BARRINEAU** – 3065 St. James Rd., Barrineau – (843) 389-1750
- 10 CLARENDON HALL** – 2106 Luke Godwin Rd., Summerton – (803) 478-5441
- 11 NORTH SANTEE** – 8009 St. Paul Rd., Summerton – (803) 478-6021
- 12 TURBEVILLE** – 1971 Old Manning Rd., Turbeville – (843) 659-3701

PRINTED ON RECYCLED PAPER OR-2010 1/20

## Why recycle?

Illegally dumped tires pose **health and environmental risks** to residents and communities.

## Attention Landowners

**Don't let anyone dump or store tires on your property.** Landowners could be held liable for cleanup costs.

## Why am I paying a \$2 tire fee?

The law places a \$2 fee on each new tire purchased to fund the management and recycling of tires, reduce illegal dumping and encourage new uses for old tires.



FUNDED BY 