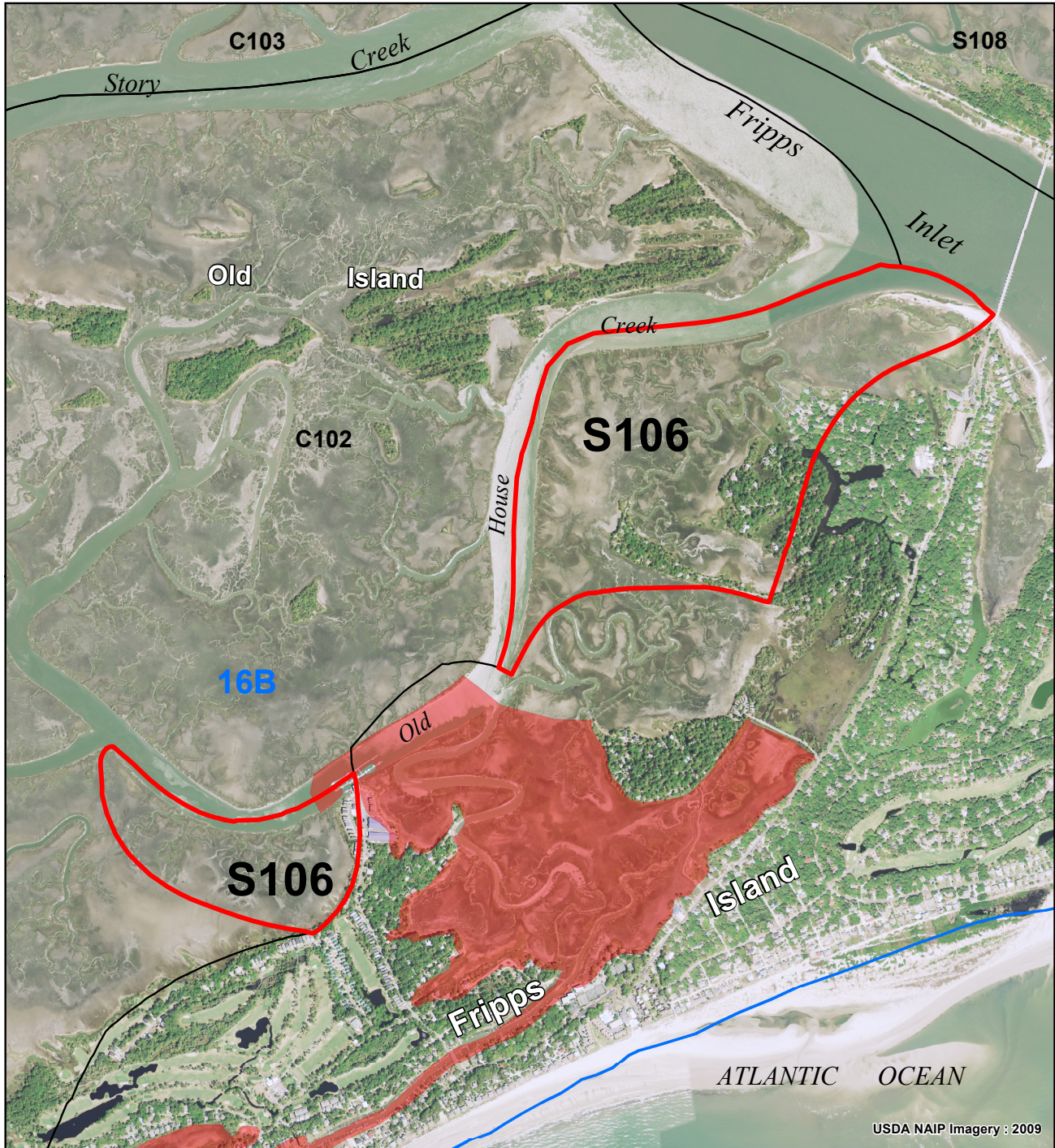


Old House Creek S106

S106 is within SCDHEC Shellfish Management Area 16B. These areas are subject to closure at any time. Please call (800)285-1618

SHELLFISH SEASON
2011 - 2012



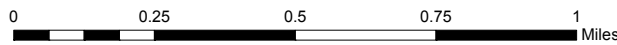
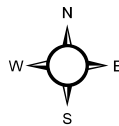
Legend

SHELLFISH HARVEST BOUNDARIES

- AREA OF INTEREST
- NEIGHBORING AREAS
C000 = COMMERCIAL CULTURE PERMIT
S000 = STATE SHELLFISH GROUND
- SHELLFISH MANAGEMENT AREAS (SCDHEC)

WATER QUALITY (SCDHEC)

- PROHIBITED
- RESTRICTED
- CONDITIONALLY APPROVED



Location: Old House Creek
County: Beaufort



PRODUCED BY:
SOUTH CAROLINA DEPARTMENT OF NATURAL RESOURCES
OFFICE OF FISHERIES MANAGEMENT
SHELLFISH MANAGEMENT SECTION
08/2011