

# MARKET BULLETIN

Vol. 99 | Num. 12

June 19, 2025

Est.

1913



## CONGRESSIONAL TOUR VISITS PEE DEE AGRIBUSINESSES

BY CADE MCCONNELL, SCDA

The Palmetto Agribusiness Council and the South Carolina Department of Agriculture recently hosted the 2025 SC Congressional Staff tour. Staffers for the state's U.S. Senators toured agribusinesses in the state's Pee Dee region. The trip allowed staffers access to some of the state's largest agribusinesses and networking opportunities across agencies.

Fifteen Congressional staff members attended the tour alongside Palmetto Agribusiness Council CEO Ronnie Summers, South Carolina Commissioner of Agriculture Hugh Weathers, and members of SCDA, SC Farm Bureau, SC State University, and more.

The tour began with an afternoon at Sonoco Headquarters in Hartsville, where the staffers toured the facility and held talks with Commissioner Weathers and representatives from Sonoco and GreenGasUSA. Sonoco, a global diversified packaging company, recently partnered with GreenGasUSA to capture gaseous methane from its wastewater treatment process and convert it into renewable natural gas.

The second day of the tour began with a trip to Cal-Maine Foods in Bethune. Cal-Maine is the largest producer and distributor of fresh shell eggs in the United States. The Bethune facility serves numerous grocery stores across the state, as well as some in neighboring states. Inside the facility, staffers saw the day-to-day operations of a large-scale egg operation, witnessing how hundreds of thousands of eggs are cleaned, sorted, and transported throughout the facility. Cal-Maine employees and Tre Byars of the South



Carolina Poultry Federation also had time to educate the congressional staff on some of the most pressing issues in the egg industry.

After Cal-Maine, the group headed to McBee for lunch at McLeod Farms. Farmer Kemp McLeod delivered a rousing speech on the history of McLeod and the common hurdles farmers currently face. Then the group headed to the peach orchards and processing facility to see the farm in action.

McLeod Farms is a multi-generational, diversified farm known for its peaches. "McBee is perfect for growing peaches," explained farmer Spencer McLeod. McLeod grows over 50 varieties of peach to ensure consistent availability throughout the summer. Among the ripening peaches, the group watched field teams harvest fruit and learned about the logistics of running a large-scale orchard operation.

This yearly tour offers opportunities for South Carolina farmers and agribusiness professionals to interface directly with members of the legislature. It is an excellent educational experience and a chance to advocate for the ag industry.

## COMMISSIONER'S CORNER



HUGH E. WEATHERS

SOUTH CAROLINA COMMISSIONER OF AGRICULTURE

## STEPPING UP FOR SC PRODUCE

Last week, a group from the Southeast Produce Council visited South Carolina to learn more about our produce industry and some of the farms that make it a success.

The Southeast Training Education Program for Upcoming Produce Professionals, or STEP UPP, is a training education program for upcoming produce professionals. The South Carolina Department of Agriculture hosted the group along with SEPC.

The goal of STEP UPP is to give retail and foodservice produce professionals a greater understanding of the industry through strategic orientation, personal leadership, and hands-on field experience.

This year's group toured:

- Titan Farms in Ridge Spring, the East Coast's largest peach farm, which has recently diversified into produce like peppers
- WP Rawl in Lexington County, the backbone of the state's fresh leafy greens industry
- Coosaw Farms in Fairfax, a grower primarily of blueberries, other berries and watermelon
- Walther Farms near Aiken, a potato grower
- City Roots in Richland County, which grows microgreens
- SCDA's Consumer Protection Division, where the group learned about food safety regulation and testing.

STEP UPP is a part of our agency's market development efforts. Through the Certified South Carolina program, we promote local food and farmers — but where the rubber really hits the road is making sure that consumers can find local food when they want it. Through the market development program, we engage with and educate retail grocery, wholesale, food service, school and institutional professionals, supply them with merchandising materials, and assure that South Carolina produce is meeting their needs.

It's all about increasing consumer awareness and product demand for quality South Carolina agricultural products at local, national, and international levels. We do this through trade shows, retail merchandising, industry engagement and networking events — and opportunities like STEP UPP.

This program has special meaning for South Carolina. Our former marketing director, the late Martin Eubanks, was instrumental in beginning STEP UPP. The Southeast Produce Council honored Martin with a contribution toward the produce farm established in his name at the Governor's School for Agriculture at John De La Howe.

The produce business is all about relationships, and it's wonderful that these young professionals had the opportunity to connect with our growers.

## UPCOMING EVENTS

### Jersey Boys Bottle Feeding Sessions

June 17 – 21 & 24 – 28 • 10 – 11 am & 7 – 8 pm  
Come meet our sweet Jersey calves and help with their favorite part of the day—bottle time! This hands-on, family-friendly experience includes up-close time with our adorable calves, a guided bottle-feeding session, and plenty of cuddles. Perfect for animal lovers of all ages! Price: \$35 per person

### Outside Inn Campground

1074 Woolbright Road, Santee  
stay@outsideinncampground.com • 803-974-8585  
outsideinncampground.com

### Ag & Art Tour

The South Carolina Ag + Art Tour is a free, self-guided tour of farms and markets that feature local artisans at every stop! During the tour, visitors have the opportunity to see first-hand where their food comes from, watch artists in action and purchase their works, enjoy the melodies of local musicians, and learn more about rural life. The tour is the largest free farm and art tour in the nation with over 150,000 visitors participating since 2012. Click the county below to see what farms you can visit for FREE in June!

#### June 21—Georgetown County

agandarttour.com/georgetown

#### June 28—Allendale County & Florence County

agandarttour.com/allendale

agandarttour.com/florence

#### June 28–29—Chester County

agandarttour.com/chester

### 5<sup>th</sup> Annual Newton Blueberry Festival

June 28 • 8 am – 1 pm

The berries will be at their peak sweetness, and the farm will be bustling with fun activities, vendors, and food trucks. Come and stay awhile! We can't wait to see everyone at the farm!

#### Newton Blueberry Farm

7834 Hwy 162, Hollywood  
NewtonBlueberryFarm1968@gmail.com  
843-889-2358

### Watermelon Tastings

June 28 • 8 or 9 am – 1 pm

Visit one of the three State Farmers Markets for a free tasting of watermelon and grab a recipe card! (Greenville Market tasting starts at 8 am; Pee Dee and South Carolina Markets tastings start at 9 am.)

#### Greenville State Farmers Market

1354 Rutherford Road, Greenville

#### South Carolina State Farmers Market

3482 Charleston Hwy, West Columbia

#### Pee Dee State Farmers Market

2513 West Lucas Street, Florence

agriculture.sc.gov/state-farmers-markets

### Candle Making Workshop

June 28 • 12 pm

Enjoy a day in the new art studio at Boondock Farms, learning through hands-on instruction how to make candles. Brought to you by Guest Host Bethanie Shell, from Homestead Flames. You will make an 8 oz candle and a 15 oz candle. The candles will have to settle overnight, and then can be picked up from Boondock Farms. Light snacks and wine! Space is limited and buying a ticket will reserve your spot in the class. See you there!

#### Boondock Farms

755 Foreman Street, Jackson

hello@boondockfarms.com • 706-589-4920

Tickets: [boondockfarms.com/event-details/candle-making-workshop](http://boondockfarms.com/event-details/candle-making-workshop)

### Tri-State Ag Expo

July 16 & 17

A wide variety of exhibitors with all of kinds of agriculture products and equipment will be presented. In addition, Clemson Extension and SCDA will be hosting learning workshops. For more info, check our Facebook page and website.

#### T. Ed Garrison Arena

1101 West Queen Street, Pendleton

tristateagexpo@gmail.com • 864-907-6837

tristateagexpo.com

facebook.com/profile.php?id=61556385459066

## CERTIFIED SOUTH CAROLINA What's In Season

### JUNE

Basil	Eggplant	Peppers (Variety)
Beans (Snap/ Pole/Variety)	Fennel	Plums
Blackberries	Garlic	Radishes
Blueberries	Kale	Strawberries
Bok Choy	Kohlrabi	Summer Squash
Broccoli	Microgreens	Sweet Corn
Cabbage	Mushrooms	Swiss Chard
Cantaloupe	Okra	Tomatoes
Cilantro	Onions	Watermelon
Collards	Parsley	Zucchini
Cucumbers	Peaches	
Edamame	Peas (Snap/ Sugar)	

## Market Bulletin Office

Monday – Friday • 8 AM – 4:30 PM

803-734-2536 • [marketbulletin@scda.sc.gov](mailto:marketbulletin@scda.sc.gov)

[agriculture.sc.gov/market-bulletin](http://agriculture.sc.gov/market-bulletin)

EDITOR Eva Moore

ADS & CIRCULATION  
COORDINATOR Janet Goins

GRAPHIC DESIGNER Stephanie Finnegan

## South Carolina Department of Agriculture Contacts

Commissioner's Office  
803-734-2190

Certified SC Program  
803-734-2207

Market News Recording  
803-737-5900

Consumer Protection  
803-737-9700

Metrology Laboratory  
803-253-4052

Fruit & Vegetable Inspection  
803-737-4588

Milk Safety  
803-667-1161

Hemp Farming Program  
803-734-8339

Produce Safety  
803-753-7267

Market News—Fruit & Vegetable  
803-737-4671

Retail Food Safety  
803-896-0640

Market News—Livestock & Grain  
803-737-4491

Wholesale Food Safety  
803-737-0147

## The South Carolina Market Bulletin

(ISSN 0744-3986)

The *Market Bulletin* is published on the first and third Thursday of each month by the SC Department of Agriculture, Wade Hampton Building, Columbia, SC 29201. Periodicals postage paid at Columbia, SC 29201.

Postmaster, send address changes to:  
SC Market Bulletin, PO Box 11280, Columbia, SC 29211

### POLICIES FOR ADVERTISING

For our full policies, please visit:  
[agriculture.sc.gov/market-bulletin-policies](http://agriculture.sc.gov/market-bulletin-policies)

Only ads pertaining to the production of agricultural products and related items are published. Ads are accepted for South Carolina items, even if the seller lives out of state, provided the item is in state at the time the ad is published and at the time of sale.

Ads are published free of charge and in good faith. The *Market Bulletin* reserves the right to edit and verify ads but assumes no responsibility for their content.

Ads cannot be accepted from agents, dealers, or commercial businesses, including real estate. Sealed bids, legal notices, or consignment sales are not accepted.

### SUBMITTING ADS

No matter the submission method, submissions must include the advertiser's name, complete address with zip code and county, and phone number with area code. While we don't publish the address, we need this information for our records. Do not use all capital letters.

- **Online:** Go to [agriculture.sc.gov/market-bulletin](http://agriculture.sc.gov/market-bulletin). Select "Submit Market Bulletin Ad" and complete the form. If you include your email address, you will receive an automated reminder for a renewal.

- **Mail:** SC Market Bulletin, PO Box 11280, Columbia, SC 29211. You must use 8.5 × 11 inch paper.

- **Email:** Send ads to [marketbulletin@scda.sc.gov](mailto:marketbulletin@scda.sc.gov). Put the words "Market Bulletin ad" in the subject line.

- **Fax:** 803-734-0659

The deadline for submitting ads and notices is noon on Tuesday of the week **before** the publication date.

## NEXT AD DEADLINE

JUNE 24 • 12:00 PM

## SCDA State Farmers Markets

#### SOUTH CAROLINA STATE FARMERS MARKET

3483 Charleston Highway  
West Columbia, SC 29172  
803-737-4664

#### GREENVILLE STATE FARMERS MARKET

1354 Rutherford Road  
Greenville, SC 29609  
864-244-4023

#### PEE DEE STATE FARMERS MARKET

2513 W. Lucas Street  
Florence, SC 29501  
843-665-5154

#### VISIT [AGRICULTURE.SC.GOV](http://AGRICULTURE.SC.GOV)

Click on the State Farmers Markets  
button for more information about  
each location

## SC Market Bulletin Subscription & Renewal Form

Mail completed form with check or money order payable to the SC Department of Agriculture to: SC Market Bulletin, PO Box 11280, Columbia, SC 29211  
To subscribe with a credit card online, visit [agriculture.sc.gov](http://agriculture.sc.gov), click on Market Bulletin, select Subscribe to the Market Bulletin, then follow the prompts.  
Do not send cash in the mail. Non-refundable. Allow 6 – 8 weeks for processing. Subscriptions may only be purchased for up to 2 years.

Name \_\_\_\_\_  Paper: \$15 / 1 year  Electronic: \$10 / 1 year  
\*Active email address required

Address \_\_\_\_\_  Paper & Electronic: \$20 / 1 year  
\*Active email address required

City \_\_\_\_\_ State \_\_\_\_\_ Zip \_\_\_\_\_  New  Renewal

Phone \_\_\_\_\_ Check # \_\_\_\_\_ Renewal ID # \_\_\_\_\_

Email \_\_\_\_\_  This is a gift

6/19/25

## Reminder to Advertisers

Ads are due by noon (12 pm) on the Tuesday after the latest published issue. Any ads received after the deadline will be considered for a subsequent issue.

## AQUACULTURE

### GRASS CARP

\$12; 3-5" Ch Cats, 65¢; 1-3" BG, 65¢; Tilapia \$1.25/\$2.25; 1-3" Irgmth Bass, \$3 ea; more Clay Chappell Richland 803-776-4923

### BLUEGILL

50¢; bass, \$2.50; catfish & redear, \$1; tilapia & crappie, \$2; grass carp, \$10; minnows, \$25 Derek Long Newberry 803-944-3058

### KOI FISH

all colors, \$1/small, \$5-10/lrg Tommy Sherman Laurens 864-546-2778

## CATTLE

### REG BLK ANG COW/ CALF PR

cow B-2/17/20, Yon cow bull calf, B-4/4, \$3200 Angela Fincher Aiken 803-640-4537

### 18 M/O REG ANG BULLS

ready for service, VG growth genetics, SAV b'lines, \$3000 ea Hugh Knight Orangeburg 803-539-4674

### 7 M/O BULL

Dexter cross w/Jersey/ Holstein, fed organic grain & pasture, \$1000 Duane Helfrick Bamberg 803-387-9209

### REG BLK ANG BULLS

exc feet, low input, docile & BSE, \$5000+ Walter Shealy Newberry 803-924-1000

### REG BRANG BULLS

(2) 18-20 m/o, BSE, forage developed, docile, \$2600 ea Keith Thomas Laurens 864-449-0079

### BUCKING BULLS

& calves, Code Blue & Panhandle Slim b'lines, \$800-6500 Phillip Hutchins Lexington 803-422-1329

### REG BLK ANG BULLS

& hefrs, exc EPDs, 13-14 m/o, gentle, Hoover Dam, Yon High Cotton b'lines, \$2500-4000 Bobby Baker Lancaster 803-804-2230

### ANG-AKAUSHI HEFRS

6-7 m/o, \$1950 ea Gene Crim Calhoun 803-609-4571

### 3 F1 HEFRS

wht faced, almost weaned, \$2000 ea Marty Sharpe Lexington 803-529-3196

### 2 FB CHAR HEFRS

B-10/I & 5/24, no papers, \$1600 ea James Caldwell Kershaw 803-438-3455

### 16 MIXED BREED COW/ CALF PRS

1 bred hefr, & 3 1/2 y/o SimAng bull w/no papers, \$62,500 firm Warren Rutland Fairfield 803-429-4138

## FARM EQUIPMENT

ADS MAY NOT BE SUBMITTED BY COMMERCIAL DEALERS. A CURRENT FARM TAG ISSUED BY THE SCDMV IS REQUIRED ON ALL FARM VEHICLES.

### JD FLEX 71 2R PLNTR

\$2400; 3pt disc harrow, 24" discs, \$2400 Edwin Havird Newberry 803-947-8038

### JD 300D BACKHOE/LDR

5985 hrs, \$12,000 Virginia Andrews Chesterfield 704-221-0376

### 8 DISC DRAG HARROWS

discs almost new, w/adj pitch & 3ph, \$400 Bobby Arnold McCormick 864-602-0437

### MF 4R CULT

\$700; Intl 4r vibrating cult, \$700; MF 2r cult, \$450; Ford 2r cult, \$450 Plato Kneece Aiken 803-582-8665

### KYOTI CS 2210 TRACTOR

dsl, used 45 hrs, incl landscape rake, \$9000 Charles Swain Aiken 803-295-2467

### 2 FRT END LDERS

both in GC, w/all mounting hdwe incl, MF L-210, \$4200; MF 236, \$4500 William Shealy Lexington 803-513-3485

### 2R CULT

7 shanks w/10" sweeps, \$425 Kenneth Long Lexington 803-603-7280

### PT-7 HESSTON HAYBIN

\$450; Frontier MS1102 manure sprdr, \$725; 6' rake, 3ph, \$475 F Rowe Newberry 803-271-7768

### 20'x7' ENCL TRL

Tandem axles, loading ramp, new tires, EC, \$6250 Jerry Comeaux Spartanburg 864-992-3869

### '19 KIOTI SUBCOMPACT TRACTOR

w/frt ldr & 4' tiller, \$14,500 Ted Storey Saluda 803-334-0465

### POULTRY HOUSE WASHER

500 gal KMC 4400, \$4500 Ben Harwell Orangeburg 803-570-0022

### 8R FOLDING HOODED SPYR

\$1200; JD 8300 grain drill, \$2800; trl w/bin, \$1200; 4r cult, \$900; more Carl Brown Aiken 803-640-0281

### 3PH DIRT 'SUPER PAN'

\$300 R Adams Darlington 843-393-7280

### '79 INTL HARVESTER 1420

Axial Flow combine, last cut 12 yrs ago, hydrostat/motor good, \$2500 John Wren Orangeburg 803-308-0097

### MF 550 GRAIN HDR

GC, \$245 Bobby Zimmerman Lexington 803-317-8681

### JD 4020

\$13,500; MF 1105, \$15,000; Cat D7E, \$27,000; Ford 3930, \$13,500 Ronald McGraw Lancaster 980-255-8584

### NO-TILL GRAIN DRILL

Great Plains w/coulter cart, EC; & JD 918 flex head, \$10,000 ea Jeffrey Gilmore Chesterfield 843-517-0315

### JD 5065 M

65 hp, rollbar canopy, 2049 hrs, \$25,000 Robert Hurley Laurens 864-981-5352

### BHB BRAND BUSHHOG

10.5', mod 3210, lrg gear boxes, \$6500 orbo Lecil Hembree Spartanburg 864-316-1222

### CASE IH 2022 COTTON PKR

JB module builder, CB boll buggy, \$12,500 Randell Wilson Abbeville 864-378-4924

### MF 165 D

\$7000 obo; 2 Hesston balers, 1 FR & 1 for parts, \$6500 obo; 16' equip trl, \$3500 Rickie Evans Chester 803-209-2714

### VENEER HAY RAKE

side del, shed kept, GC, \$3000 Jackson Cauthen Lancaster 803-323-7797

### 14' DISC HARROW

good blades, \$2200 Gene Weatherford Lee 803-840-4512

### JD 450C CRAWLER DOZER

w/bucket, O/C blade, don't twist, as is, \$9000 obo; 7' boom pole, \$125; more Franklin Brown Charleston 843-224-4711

### IH 820 COMBINE HDR AUGER

15', \$400; 3pt scoop pan, \$125 Charles Nichols Saluda 864-992-9292

### 7' BHB BUSH HOG

EC, \$2500 Carey Wilson Anderson 864-437-9297

### '93 2H GN TRL

w/LQ, needs work, \$9500 orbo Arthur Langley Lexington 803-429-5482

### FORD 3000 TRACTOR

\$6000; btm plow, \$300; 20 disc harrow, \$100 more Gary Seay Spartanburg 864-384-8405

### TAYLOR-WAY DISC HARROW

12", \$2000; 3ph posthole digger, 6", 9", 12" augers, \$300 Kenneth Fleming Chester 803-377-7937

### JD 963 WAGON RUNNING GEAR

complete but needs restoring, \$500 Jimmy Whittle Lexington 803-422-9775

## FARM LABOR

NOTICES ARE ACCEPTED FOR AGRICULTURAL WORK ONLY AND NOT FOR HOUSEWORK, NURSING, OR COMPANIONSHIP NEEDS.

### HERBICIDE APPL AVAIL

for invasive species, site prep, row crop, pasture & hay lands Andrew Williams Greenville 843-534-6195

### SERVICE TRUCK FOR HIRE

truck-tractor repair, metal & welding work John Wren Orangeburg 803-308-0097

### LIGHT TRACTOR WORK

incl bush hogging, discing, cut up & removal of downed trees, light landscaping John Tanner Lexington 803-422-4714

### BEAVER TRAPPING

& exclusion, Aiken Co & surrounding area Joe Leonard Aiken 803-507-4940

### FORESTRY MULCHING

land clearing, wildlife mgmt, ditches, grading, pond digging Jay Lowder Clarendon 803-473-0646

### LIME SPREADING

specialize in TN valley lime, call for prices Drake Kinley Anderson 864-353-9628

### EXCAVATOR WORK

digging, stump removal, brush clearing, cleaning around fields & fences Jason Nichols Saluda 864-992-2753

### HERBICIDE/PESTICIDE APPLS

& seeding by ground or UAV, Ag, forestry & aquatic Joel Cox Spartanburg 864-706-1495

### MOBILE SAWMILLING

30"+ dia & 21'L, drop off up to 52"; land clearing, excavator work, Veteran owned/insured John Smith Pickens 864-982-2249

### FORESTRY MULCHING

& mini X brush cutting up to 8" clearing/dozer/Deere work, pond maint, bldg pads, etc Phillip Hutchins Lexington 803-422-1329

### DOZER/TRACKHOE WORK

land clearing, ditching, ponds, roads, trackhoe, bush hog, bldg pads Fred Morris Florence 843-621-8647

### TREE LIMB TRIMMING

for roads, fence lines, field edges, up to 26', all surrounding cos Damon Archie Chester 803-517-7436

### PASTURE MGMT SERV

spray weeds, treat fire ants, fert & lime, plant pastures, Fescue, Ryegrass, Bermuda, Bahia Kenny Mullis Richland 803-331-6612

### DOZER/TRACKHOE WORK

build & repair ponds, demo, tree removal, land clearing, roads, free est James Hughes Greenwood 864-227-8257

## FARM LAND

FARM LAND MUST BE OFFERED FOR SALE BY THE OWNER, NOT AN AGENT. TRACTS MUST BE AT LEAST 5 ACRES UNDER CULTIVATION, TIMBER, OR PASTURE. OUT-OF-STATE OWNERS—NOT REAL ESTATE AGENTS—MAY SUBMIT ADS FOR LAND IN SC.

### WANT 10+A TO BUY

in Lex Co, with or w/o farm buildings Elmer Fuller Lexington 803-629-0416

### 19.8A CLEARED LAND

w/irrig well/sys, SC Hwy frtgate, fenced, secured entrance, \$210,000 Michelle Hromyak Aiken 803-507-4112

### WANT TO LEASE PASTURE

for reg Ang cows, no bull; or cut & bale hay from Britton Mccarter York 704-913-6083

### 74.8A CALHOUN CO

wooded, 3 creeks w/ culverts, exc hunting, sites for home/pond, map# 044-00-00-016, \$7250/A Rodney Saylor Calhoun 803-260-4153

### 62.7 A LEXINGTON CO

wooded, 2 creeks, big lumber, exc hunting, pond/ home sites, \$5250/A Bobby Livingston Richland 803-518-8702

## EQUINE

THE SELLER MUST PROVIDE A COPY OF A CURRENT NEGATIVE COGGINS TEST WITH THE AD. SCANNED COPIES ARE ACCEPTABLE.

### 21 Y/O BLK TWH

mare, 15.25 h, good trl horse, \$1200  
Beverly Weatherford Lee  
803-840-1685

## FRESH PRODUCE

PRODUCE MUST BE RAW AND NON-PROCESSED. RAW MILK, BUTTER, AND CHEESE PRODUCTS MUST BE PERMITTED BY SCDA. AN EGG LICENSE IS NOT REQUIRED FOR ON-FARM POINTS OF SALE.

### FRESH BLUEBERRIES

\$15/gal  
Deborah Worth  
Aiken  
803-507-1926

### PECANS IN SHELL

\$2/lb; chicken eggs, \$3/dz; duck & guinea eggs, \$5/dz  
Joe Culbertson  
Greenwood  
864-229-5254

### JUMBO QUAIL

& chicken eggs, \$3-4/dz  
Brian Motley  
Kershaw  
803-315-7598

### FARM CHICKEN EGGS

\$4/dz  
Ron Handley  
Georgetown  
843-896-0829

## GARDEN

ADS ARE NOT ACCEPTED FROM COMMERCIAL NURSERIES, WHICH HAVE ANNUAL SALES OF \$5,000.

### BLUBERRY PLANTS

3/\$20; Figs, Pomegranate, Elderberry plants, \$20; grapevines, \$10; Mulberry trees, \$30  
Freeman Noles  
Barnwell  
803-383-4066

### MUSCADINE PLANTS

purple, lrg fruit & hvy bearing, \$5 ea or 5 for \$20  
Brian Gray  
Greenville  
864-908-9777

## HOGS / PIGS

### 18 M/O BLK KUNEKUNE SOW

recently bred, \$250 obo, text preferred  
Glenn Murphey  
Aiken  
864-490-0746

## GOATS / LLAMAS / SHEEP

### 2 Y/O M GOAT

\$150  
Don Patrick  
Dorchester  
843-224-6613

### '25 JACOB LAMBS

rams & ewes, 4 & 2 horned avail, \$150, call/text  
Allan Clark  
Abbeville  
864-314-5226

### ND KIDS & YRLGS

bucks, \$75-125; does, \$175-275  
Deborah Reed  
Orangeburg  
843-312-5018

### KATAHDIN RAMS

B-1/'25, dewormed, grain-fed, on pasture, \$225 ea  
Sam Rikard  
Lexington  
803-892-2630

### (2) 2 Y/O ND BILLIES

uncut, \$100 for both  
Bobby Arnold  
McCormick  
864-602-0437

### 2 1/2 Y/O NUBIAN M

friendly, from reg b'line, \$250  
Brooke Shumpert  
Lexington  
803-206-1499

### 2 MDGA MINI-MANCHA GOATS

gold/wht, CAE/Johnes, B-4/15, doeling, \$175; buckling, w/papers, \$150, w/o papers, \$125  
Gail Cooley  
Anderson  
864-947-8880

### REG MYOTONIC/ FAINTING GOAT KIDS

bucks/does born mid-late Mar, lots of color & moon spots, \$300-400 ea  
James Boatwright  
Spartanburg  
864-430-9943

### KATAHDIN EWES & RAMS

4+ m/o, gentle, hand raised, vac & wormed, \$200+  
Tammy Hodge  
Sumter  
803-983-5041

## HAY & GRAIN

### HQ SQ CB

hvy bales, in barn, \$8; rnd CQ, \$24; 16 bales outside, \$30, take all \$25  
George Mccoy  
Chesterfield  
843-307-8866

### 4x5 FESCUE MIX

net wrap, freshly cut, \$50/bale  
Eugene Robertson  
Lancaster  
803-289-8700

### RND BALES

\$65/shed kept, \$60/outside  
Bobby Zimmerman  
Lexington  
803-317-8681

### 4x5 HQ CB

shed kept, net wrap, 800-900 lbs, \$65  
Nelson Oswald  
Lexington  
803-532-4001

### HQ 5x6 RND COASTAL

wrapped, dry stored, \$180/ton, 5 bale min p-up  
Sally Harrison  
Saluda  
803-622-8597

### '25 SPRING HAY

4x5 rnd, \$35/bale  
Mary A Riddle  
Saluda  
803-727-5844

### OAT & RYE GRASS BLEND

net wrap; twine CB, all shed kept, '24, 4x5, \$60/bale  
Sam Rikard  
Lexington  
803-892-2630

### SQ FESCUE

NR, barn kept, \$7 ea; goat & cow, \$6 ea  
Jerry Butler  
Laurens  
864-697-6343

### RYE STRAW

\$5/bale, barn kept  
Howard McCartha  
Lexington  
803-312-3316

### HQ RND CB

net wrap, shed kept, \$60 ea  
Clayton Leaphart  
Lexington  
803-892-2642

### RND OAT BALES

rained on, \$25/bale  
Jackie Rogers  
Spartanburg  
864-381-5971

### SQ BALE STRAW

\$4: wheat, \$60; oats, \$40, in your 55 gal drum, also avail in bulk bags  
Jeffrey Gilmore  
Chesterfield  
843-517-0315

## Beware of Potential Hay Scams

Farmers are urged to be cautious when selling hay to new clients, especially those from out of state. If possible, verify the check before sending the hay. Speak to the buyer in person to verify all information.

## MISCELLANEOUS

### WALNUT LUMBER

421 bdft, all 1" thick, var widths 4-8", 8'L, \$1500 obro  
Joseph Rister  
Lexington  
803-920-9153

### FARRIER TOOLS

comp w/anvil-stand, misc tack, saddles, harness, antiq, \$5+  
Donald Henson  
Spartanburg  
864-463-4091

### 8x10 WALK-IN COOLER

\$1800  
John Moore  
Abbeville  
864-321-0300

### TOP SOIL/FILL DIRT

\$2/yd; Walnut log, \$100  
R Adams  
Darlington  
843-393-7280

### RND CEDAR POSTS

7' & 8' L, \$4-7 ea; cedar posts, 4"x4"x8', \$7 ea  
Joe Culbertson  
Greenwood  
864-229-5254

### (3) 7500 BU GRAIN BINS

GC, \$10,000 for all 3, lv msg  
John Till  
Orangeburg  
803-707-5646

### WORM CASTINGS FERT

100% organic, SC Certified, no fillers, 30 lb bags, \$20/bag, \$120 for 10 bags  
Maryann Little  
Lexington  
803-530-9219

### CARPENTER BEE TRAPS

5 for \$85, mailed ppd  
William F Timmerman  
Aiken  
803-640-6265

### GARDEN TRACTOR

Cub Cadet 1450, 14 hp  
Kohler (new carb), hydro trans, hyd lift, spare tire, mwr frame, \$375 obo  
Ralph Taylor  
Chester  
803-789-5110

### 4' TUBE GATE

\$45; 7'x3/8" chain, hook on one end, \$25  
Russell Goings  
Union  
864-426-2309

### HDWD LUMBER

boards 1"x12"x8'L, \$4/bdft, 300 bdft min/del, will custom cut for lrg dels  
Ryan Anderson  
Greenville  
864-234-2918

### LIQUID LICK TANK

\$100; Pecan wood, \$10/bundle  
Billy Gallman  
Newberry  
803-276-7171

### 8x10 WALK IN COOLER

w/comp, \$1400  
Franklin Brown  
Charleston  
843-224-4711

### 5 HP ELEC MOTOR

new, bought for grain auger, nvr used, \$750  
Charles Nichols  
Saluda  
864-992-9292

### ALASKAN CHAINSAW MILL

24"W w/14' rails, EC, \$250; chainsaw, Husqvarna 460  
Ranch boss, w/24"bar, \$300  
James Caldwell  
Kershaw  
803-438-3455

### 8' CEDAR RND POSTS

6-3" dia, \$8 ea  
Douglass Britt  
McCormick  
864-391-3334

### COMP TURBO KIT

for JD 4020, \$2500  
Ronnie Judy  
Dorchester  
843-701-6394

### 2H WAGON

\$500; wash pot, \$15; mule drawn hay rake, \$100; more  
Gary Seay  
Spartanburg  
864-384-8405

### 25 CEDAR FENCE POSTS

\$1 ea; antiq Ram water pump, no power needed works on a live stream, \$100  
Earl Berry  
Saluda  
864-445-7143

### OAK FIREWOOD

long bed p/up, del & stack, cut to size, \$150  
Ronald Wright  
Richland  
803-606-1666

### FIREWOOD AND/OR LOGS

hdwd trees on the ground, \$5/load  
Clyde Bridges  
Greenville  
864-354-7619

### MILLER BOBCAT 225G

welder/gen 8000 KW w/ Onan P216G on trl, \$3400 obo; wht oak lumber, 8-20'L, \$3/bdft obo  
Lecil Hembree  
Spartanburg  
864-316-1222

### PLASTIC NURSERY POTS

mostly new, \$2 ea/5 gal, \$1.25 ea/3 gal, 25¢ ea/1 gal  
Carol Elliott  
Richland  
803-261-1666

### 55 GAL FG DRUMS

metal & plastic open top w/top & rings, \$20+; solid top 55 gal, \$20 ea; 275 gal portow tanks, \$60 ea  
Philip Poole  
Union  
864-427-1589

### 6500 BU GRAIN BIN

24' dia w/fan & unloading auger, \$2300  
Carl Brown  
Aiken  
803-640-0281

### 12' GALV FARM GATE

w/wire mesh on bottom half, VGC, \$175  
Jimmy Whittle  
Lexington  
803-422-9775

### JD 2840 HYD PUMP

JD 2155 hood, \$300 ea; JD 2755 fuel tank, \$150  
Robert Hurley  
Laurens  
864-981-5352

### 6 & 8' FENCE POST

\$10; HD Camlock toolbox, \$450; TS toolbox, \$100; TS side toolbox, \$50; more  
Edwin Havird  
Newberry  
803-947-8038

### WASH LINE

mfg by TEW Equip Co, 4 pcs, receiver, washer, dryer, rnd table, made for rnd veg/ fruits, EC, \$5000  
Carey Wilson  
Anderson  
864-437-9297

### OLD COMP FARM BELL

old, #3, \$350; xl farm bell, w/wheel, comp, \$1200; #20 hash pots, \$200 ea; #15, \$150; more  
Perry Masters  
Greenville  
864-561-4792

### ALL-PURPOSE ENG SADDLE

18" collegiate, M tree, brn, girth & stirrup leathers, safety stirrups, \$250  
Patricia Dukes  
Calhoun  
803-606-1140

## PLANTS & FLOWERS

ADS ARE NOT ACCEPTED FROM COMMERCIAL NURSERIES, WHICH HAVE ANNUAL SALES OF \$5,000.

### AZALEAS

Gardenia, Boxwoods, \$6; Tea Olives, \$8; Camellias & Angel Trumpets, limelight hydrangeas, \$20  
Freeman Noles  
Barnwell  
803-383-4066

### MONKEY GRASS

aka Liriope, Hosta, \$4 ea; Iris, Daylily, \$5 ea; Hydrangea, Gardenia, \$10 ea  
Woody Ellenburg  
Pickens  
864-855-2565

### LRG POLONIA TREES

standing, live, makes knot-free wht lumber, \$200/tree, call for appt to view  
Cecil Fulmer  
Lexington  
803-238-1465

### DAYLILIES

\$10; Liriope, Sage, Ageratum, Aloe, 4 O'clocks, Jessamine, other vines, \$3+, no ship  
S R Pound  
Lexington  
803-466-2052

## RABBITS

### FLEMISH GIANT

\$35 ea; Cottontail, \$25 ea  
Joe Culbertson  
Greenwood  
864-229-5254

### LACOTTONTAILS CROSSED

on Mississippi cane cutter, \$12 ea  
Danny Cook  
Newberry  
803-924-6953

### REX

all colors, yng, \$15-20 ea; grown bucks, \$20 ea; does, \$25 ea; LA cottontail grown bucks, \$20 ea; does, \$25 ea  
Philip Poole  
Union  
864-427-1589

POULTRY

**GUINEA FOWL TRIO**

\$45 for all; M African goose, \$35  
Troy Frick  
Lexington  
803-673-6737

**GROWN GUINEAS**

\$20 ea; yng, \$7+; Cochinchina  
bantams, \$10+  
Philip Poole  
Union  
864-427-1589

**PIGEONS**

solid white, Hubble breed  
is raised commercially for  
squab production, \$15+  
R Adams  
Darlington  
843-393-7280

**BOB WHT & TN RED QUAIL**

flight cond, \$6 ea  
Dwight Gilliland  
Saluda  
864-941-0958

**GUINEA KEETS**

many colors & ages \$10+  
ea; Bobwhite quail chicks,  
\$5+ ea  
Mary Jane Vivas  
Edgefield  
803-480-1574

**OE BANTAM CHICKENS**

show qual, var b/lines, &  
Jacobin pigeons, \$50 ea  
James Malphrus  
Dorchester  
843-821-8172

**7+ W/O BABY CHICKS**

RIR, RI wht, Barred Rocks,  
Cinnamon queens, \$15+;  
adult RIR hens, more, \$40+ ea  
John Moore  
Allendale  
864-321-0300

**BUFF ORPINGTON CHICKS**

newly hatched, \$5 ea  
Lee Allen Erbe  
Calhoun  
843-789-9645

**SPECKLED SUSSEX**

SR, good for eggs or meat, 8  
w/o, NPIP, \$25 ea or 5/\$100  
Patricia Dukes  
Calhoun  
803-606-1140

**SEX LINK**

blk Copper Marans, Bob  
Wht & jumbo Coturnix  
quail chicks, \$2-5 ea  
Brian Motley  
Kershaw  
803-315-7598

**PEACHICKS**

\$50+; Royal Palm chicks, \$30  
Ernie Redmond  
Orangeburg  
803-535-8038

**CINNAMON QUEEN PULLETS**

H-3/1, \$25 ea  
Melvin Cannon  
Lexington  
803-315-9099

**1 Y/O RIR ROO**

healthy, \$1, call/text  
Teresa Epting  
Newberry  
803-413-5614

**45 RUNT PIGEONS**

meat type, \$25 ea or \$1000 all  
Thomas Waters  
Colleton  
843-696-6627

**BANTAMS**

Araucana, Blk Rosecomb,  
Mille Fleur, OE Blue, \$9  
ea; Peacocks, \$95 ea; RIR &  
Golden Comet hens, \$15 ea  
Joe Culbertson  
Greenwood  
864-229-5254

**ROYAL PALM TURKEY CHICKS**

5 d/o, \$20 ea firm, lv msg  
David Maciejewski  
Oconee  
864-309-9472

**MALLARD DUCKS**

\$25 ea: baby Mallards, \$6 ea  
Shane Sease  
Bamberg  
803-824-9124

**TURKEYS**

Broad breasted bronze, 2-5  
y/o, \$100/pr, \$150/trio  
Nelson Brawley  
Union  
864-426-1634

SEED

ADS MUST BE ACCOMPANIED BY  
A CURRENT SEED LAB TEST.

**DIXIE LEE PEAS**

cleaned, G-91%, D/H S- 1%,  
D/H S & G, 92%, good for  
deer food plots, \$50/50 lb bag  
Jeffrey Gilmore  
Chesterfield  
843-517-0315

WANT - FARM EQUIPMENT

**MANURE SPREADER**

in good or repairable  
condition  
Benny Goff  
Kershaw  
803-269-8189

**12' LIVESTOCK TRL**

& 2h trl, w/no tack room,  
both BP, used in GC  
Charles Doyle  
Florence  
843-992-6267

**JD 3020-4020**

dsl; JD 158/ldr  
Ronnie Judy  
Dorchester  
843-701-6394

WANT - LIVESTOCK

EACH AD MUST LIST SPECIFIC ANIMALS.

**BEEF CATTLE**

any age or size  
Kenneth Satterfield  
Laurens  
864-304-3172

Review our  
ad policies:

AGRICULTURE.  
SC.GOV/MARKET-  
BULLETIN-POLICIES

WANT - MISCELLANEOUS

**FEED BIN**

upright 6-8 ton w/4 legs,  
some rust or hole okay to  
disassemble for other use  
Talmadge Luker  
Greenwood  
864-941-1703

**PULPWOOD SAW TIMBER**

hdwd pine, all types of  
thinning or clear cut,  
Upstate cos  
Tim Morgan  
Greenville  
864-420-0251

**CANNING JARS**

64 oz, 1/2 gal, standard neck  
(narrow), Mason/Ball/Atlas,  
lv msg  
Adam Finkelstein  
Anderson  
864-348-3026

**CEDAR TREES/LOGS**

scaled w/Doyle scale, 8+  
on small end, 8' min L, 25¢/  
bdft  
Dakota Hollman  
Lexington  
803-687-6382

**ANY SIZE WASH POTS**

syrup kettle, anvils, lrg coffee  
grinder, old lighting rod w/  
balls & weathervane, more  
Perry Masters  
Greenville  
864-561-4792

**FARM BELLS**

syrup kettle, any size  
blksmith anvils  
R Long  
Newberry  
803-924-9039

HOW FARMS CAN GET INVOLVED IN SC'S  
REVOLUTIONARY WAR OBSERVANCES

SC250 INVITES SOUTH CAROLINIANS TO REDISCOVER THE REVOLUTION

BY SC250

Did you know that there were more than 400 battles, skirmishes, and events across South Carolina during the American Revolution?

The South Carolina American Revolution Sestercentennial Commission (SC250) was chartered by the state General Assembly in 2018 to educate residents and visitors about South Carolina's outsized role in America's independence from Britain.

Although many look to July 4, 2026 as the hallmark event of our nation's 250<sup>th</sup> anniversary, SC250's work toward honoring impactful historical events and heroes began several years ago. Each of South Carolina's 46 counties has formed a County 250 committee, giving residents throughout the state a platform to highlight the historical landmarks and tell the stories of heroes in their own communities.

South Carolina's Revolutionary-era history runs as deep as its agricultural roots. The state's agricultural community can get involved with SC250's mission in numerous ways:

- Visiting an American Revolution historical site, many of which are connected to farmland, locally or across South Carolina
- Submitting an American Revolution historical site in support of SC250's heritage tourism and rural economic growth initiatives
- Joining a County 250 committee
- Accessing SC250's educational and genealogical resources as well as grant offerings, including grants for those with historically significant property



More information about these resources can be found at the SC250 website, [SouthCarolina250.com](http://SouthCarolina250.com).

SC250's mission is to celebrate and promote South Carolina's role in the American Revolution by engaging and inspiring South Carolinians and visitors through heritage tourism, rural economic growth initiatives and educational programs.

As excitement builds and interest in America's 250th anniversary grows, SC250 invites all South Carolinians to get involved. To learn more about SC250, upcoming events, and how the Revolutionary War was won in the Palmetto State, visit [SouthCarolina250.com](http://SouthCarolina250.com).



CLEMSON UNIVERSITY  
LAUNCHES STATEWIDE  
EXTENSION  
WILDLIFE DAMAGE  
MANAGEMENT  
PROGRAM

BY JACOB MURRAY,  
CLEMSON COOPERATIVE EXTENSION

Clemson University's Cooperative Extension Service has recently launched a new, statewide Wildlife Damage Management Program to provide resources and science-based solutions for addressing human-wildlife conflicts in South Carolina.

The new program, led by Clemson University's Extension Wildlife Damage Program Director, Dr. Elizabeth A. Bradley, and two Wildlife Damage Extension Associates, Andrew Jamison and Jacob Murray, aims to implement an evidence-based and interdisciplinary approach to reduce wildlife damage caused by common conflict species, including but not limited to feral swine, white-tailed deer, beaver, and coyotes.

Through collaboration with state agriculture and natural resource agencies such as the SC Department of Agriculture, SC Department of Natural Resources, SC Farm Bureau, and others, the new Wildlife Damage Management Program is part of Clemson Extension's commitment to integrating research, education, and outreach to address issues affecting agricultural producers, non-industrial private landowners, and community stakeholders throughout South Carolina.

# LOCAL SHRIMP SEASON OPENED JUNE 2

## FRESH SOUTH CAROLINA SHRIMP SOON AVAILABLE ON DOCKS AGAIN

BY SCDNR | PHOTO BY MICHAEL HRIZUK

South Carolina's commercial shrimp trawling season opened in all legal state waters at 8 am on Monday, June 2, 2025.

"Although we did have a cold snap in late January, white shrimp numbers across South Carolina's estuaries have generally been near the long-term average this winter and spring," said biologist Jeff Brunson of the South Carolina Department of Natural Resources (SCDNR).

In an average year, shrimp season opens in full by late spring, typically after the opening of eight smaller provisional areas in the state's outer waters. This year those provisional areas opened on April 24, allowing shrimpers to begin harvesting some larger white shrimp from farther offshore while still protecting most of the spawning population closer to shore.

SCDNR officials set the opening date for shrimp season each year based on the conditions of the

shrimp themselves. Aboard both commercial and agency vessels, biologists sample and study white shrimp frequently in late spring. One of the things they're looking for is evidence that a majority of female white shrimp have already spawned at least once.

Opening the season too soon — and allowing trawlers to catch too many females that have not had an opportunity to spawn — could reduce the size of the fall white shrimp crop, which are the offspring of the spring white shrimp.

South Carolina's commercial shrimp calendar has historically had three peak periods. In the spring, shrimpers typically capitalize on the influx of roe

white shrimp, large, early-season shrimp that generally fetch higher prices. The summer months are defined by a peak in brown shrimp, which are similar to white shrimp in size and taste. In the fall and into winter, shrimpers bring in a second crop of white shrimp; the offspring of the spring roe shrimp.



Because white shrimp are a short-lived species that are sensitive to cold water temperatures and

unusually wet or dry summers, their numbers can fluctuate dramatically from year to year. However, they're also prolific spawners — which means that the populations can quickly rebound even after a poor year or season.

# USDA'S EFFORTS TO FIGHT NEW WORLD SCREWORM IN MEXICO

BY USDA

(Washington, D.C., May 27, 2025) – U.S. Secretary of Agriculture Brooke L. Rollins provided an update on the U.S. Department of Agriculture's (USDA) ongoing partnership with Mexico to combat the New World Screwworm (NWS). This afternoon, Secretary Rollins held a call with her counterpart in Mexico, Secretary Berdegue, to discuss the ongoing threat of NWS and actions being taken by both countries to contain the threat south of the U.S. border. USDA is working daily with Mexico to make sure the resources, tactics, and tools are in place to effectively eradicate NWS. Additionally, Secretary Rollins announced today the USDA is investing \$21 million to renovate an existing fruit fly production facility in Metapa, Mexico to further the long-term goal of eradicating this insect. When operational, this facility will produce 60-100 million additional sterile NWS flies weekly to push the population further south in Mexico. Given the geographic spread of NWS, this additional production capacity will be critical to our response.

"Our partnership with Mexico is crucial in making this effort a success," said Secretary Rollins. "We are continuing to work closely with Mexico to push NWS away from the United States and out of Mexico. The investment I am announcing today is one of many efforts my team is making around the clock to protect our animals, our farm economy, and the security of our nation's food supply."

Current restrictions on live animal imports from Mexico remain in place, and as previously announced, USDA will continue to evaluate the current suspension every 30 days.

USDA and its partners have used sterile insect technique, or SIT, along with other strategies such as intense surveillance and import controls for decades to eradicate and effectively keep NWS at bay. Currently, U.S. supported sterile insect rearing and dispersal operations in Mexico and Central America have been operating at full production capacity, with up to 44 flights a week releasing 100

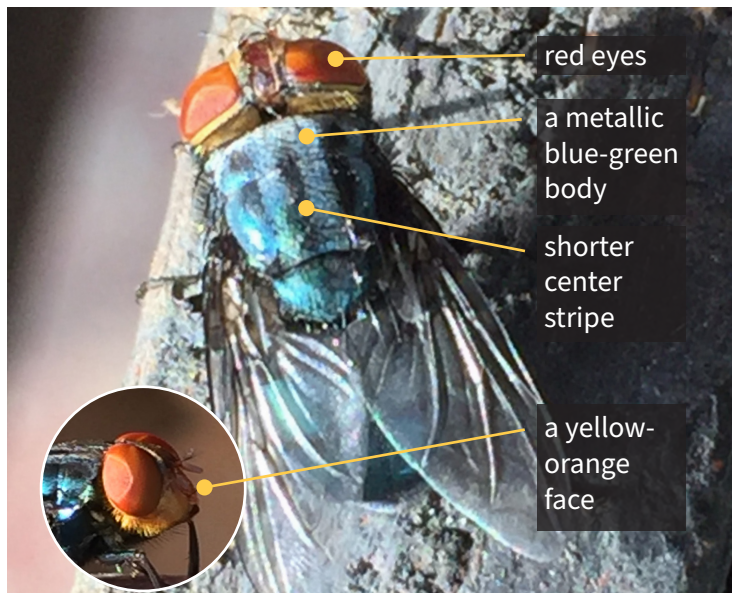
million sterile flies. All flies used today are raised in the Panama - United States Commission for the Eradication and Prevention of Screwworm (COPEG) Facility in Panama. This investment in the Metapa facility in Mexico would allow USDA to double the use of SIT.

Additionally, USDA's Animal and Plant Health Inspection Service (APHIS) and its Mexican counterparts continue to hold ongoing technical calls and meetings on NWS. They are making strong progress toward enhancing surveillance in Mexico, addressing administrative or regulatory roadblocks that could impair an effective response, and ensuring appropriate animal movement controls are in place to prevent further NWS spread. The Mexican delegation joined APHIS in DC last week to discuss these efforts, and APHIS will have a technical team visiting Mexico in the coming weeks to assess the on-the-ground situation and continue working toward key goals around surveillance and animal movement.

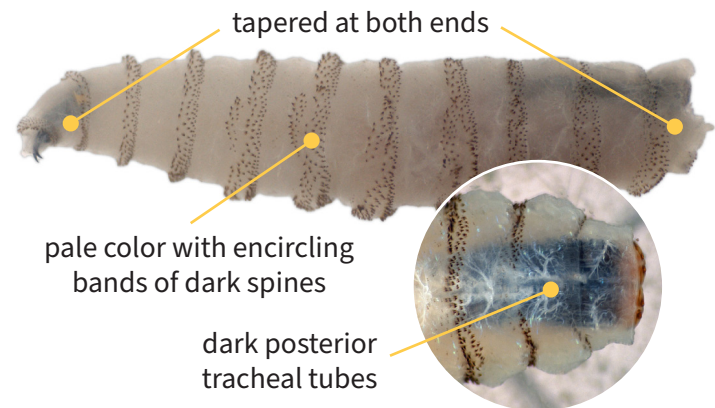
**USDA** Animal and Plant Health Inspection Service  
U.S. DEPARTMENT OF AGRICULTURE

## New World Screwworm

New World screwworm is a devastating pest that can affect livestock, pets, wildlife, occasionally birds, and in rare cases, people. Adult screwworm flies are about the size of a common housefly (or slightly larger).



Screwworm larvae (maggots) burrow into a wound, feeding as they go like a screw driving into wood. The maggots cause extensive damage by tearing at the hosts' tissue with sharp mouth hooks. The wound becomes deeper and larger as more maggots hatch and feed on living tissue.



Scan the QR code to learn more about this pest. Immediately report signs to your State Animal Health Official ([www.usaha.org/saho/](http://www.usaha.org/saho/)) or USDA Area Veterinarian in Charge ([www.aphis.usda.gov/contact/animal-health](http://www.aphis.usda.gov/contact/animal-health))

USDA is an equal opportunity provider, employer, and lender.

APHIS-25-033 | May 2025

# CLEMSON'S 4-H PINCKNEY LEADERSHIP PROGRAM GETS VISIT FROM NATIONAL 4-H COUNCIL

BY MARLON MORGAN, CLEMSON UNIVERSITY

Clemson University began the 4-H Pinckney Leadership program in 2016 as a means of helping middle and high school students develop their leadership abilities and awareness of civic engagement through camps, conferences and a roundup event.

The program has grown to more than 750 youth and adult leaders representing 37 of South Carolina's 46 counties. At this year's 4-H Pinckney Leadership Roundup, the program had the privilege of hosting Jill Bramble, president and CEO of the National 4-H Council, and Natalie Godwin, vice president of corporate communications of the National 4-H Council.

"It just shows the effort South Carolina 4-H as well as Clemson Cooperative Extension has been making to make sure that our young people are prepared not only for the problems that they'll face, but also for the things that they are facing right now. We're making sure our young people are prepared to be not only well-rounded citizens, but also able to contribute to the workforce in the future, whether it's postsecondary school, college or even a trade or career directly after high school," said Rushawnda Olden, director of the 4-H Pinckney Leadership program.

The program was created in honor of the late South Carolina Senator Clementa Pinckney, who was murdered along with eight others at Emanuel AME in Charleston, South Carolina, where he was a senior pastor.

"Senator Pinckney was someone who was a very strong advocate of youth development and of youth leadership development," Olden said. "He was an advocate for 4-H in general. He was a 4-H member in Jasper County and he had a very close relationship with his 4-H agent. What we're doing is continuing his legacy by keeping his principles of leadership, love, community service and civic engagement alive."

In July, Clemson will hold a 4-H Pinckney Leadership Camp for rising seventh and eighth graders at Camp Long in Aiken, South Carolina. Students will participate in leadership workshops, team-building activities and high ropes course, community engagement, traditional camp activities and more.

In both June and July, Clemson will host a 4-H Pinckney Leadership Conference for rising 10<sup>th</sup> and 11<sup>th</sup> graders at the University. The students will participate in:

- Leadership workshops focused on building confidence and communication skills
- Team-building activities to foster collaboration and problem-solving
- Community engagement projects to inspire service and civic responsibility
- Sessions on career and college readiness, including networking and planning for the future
- Experiencing college life on Clemson's campus
- Whitewater rafter for adventure and team-bonding
- And more

If accepted, students must commit to being active in the 4-H Pinckney Leadership program activities throughout the year.

4-H Pinckney Leadership Roundups are held in three locations — Columbia, Florence and Charleston. Youth leaders from diverse backgrounds participate in hands-on student leadership sessions, engage in critical dialogue centered on personal excellence, establish and maintain relationships with likeminded student leaders and connect with professionals from higher education.

The program's success stems from partnership's Olden has been able to cultivate across the state. Those partners are instrumental in spreading the word to youth in their various regions about the Leadership program. One of those partners is Low Country Youth Services in Charleston.

McKendrick Dunn, associate executive director of Low Country Youth Services, learned of the 4-H Pinckney Leadership Roundup when he met Olden at a conference. He approached her about holding a 4-H Pinckney Leadership Roundup in Charleston. Olden said she didn't have local connections there and would need help promoting it.

"Our access to kids and the community was kind of a match," Dunn said. "When we told her we would be her legs on the ground to make the Leadership Roundup happen, she was happy to finally find a partner that she could work with."

"As a result, we brought the first one here in 2024 and it sold out. We put the word out, we made flyers, we went to schools, we used our social media followers. We not only sold out, but we had people waiting to get in."

This year's event, which was held in March, sold out a month ahead, Dunn said. The 4-H Pinckney Leadership Roundup featured speakers from across the state, interactive workshops, networking and a live DJ.

Dunn called working with Olden and her staff a "relationship that was meant to be."

"She's very meticulous when it comes to how she wants that program run and also making sure she had contingencies in place in the event of any issues that come up from registration to speakers to food," Dunn said. "She has a great staff of volunteers who support her and I'd like to think that we are a good complement to her and that staff. When she's here, we look at ourselves as servants to her. We understand this is the program she's owning and facilitating."

---

For more information on the 4-H Pinckney Leadership program, contact Olden at 864-986-1195.

## DPH OFFERS TIPS FOR AVOIDING MOSQUITO BITES THIS SUMMER

BY SC DEPARTMENT OF PUBLIC HEALTH

The South Carolina Department of Public Health (DPH) reminds South Carolinians of several tips to help prevent mosquito bites and eliminate mosquito breeding areas while enjoying time outside this summer.

There are at least 61 different species of mosquitoes in South Carolina, but fortunately not all of them bite people. Often, mosquitoes are simply a nuisance, but some species can pose serious health risks to people and animals by spreading disease.

The most common diseases that could potentially be carried by mosquitoes in South Carolina include: West Nile, Eastern Equine encephalitis, La Crosse encephalitis, Saint Louis encephalitis virus, and dog/cat heartworm. West Nile virus is the most common disease concern for people.

"Learning how to avoid mosquito bites is important to reducing our chances of exposure to mosquito-borne diseases, as is conducting mosquito prevention and control efforts year-round, especially during spring, summer and fall," said Dr. Chris Evans, DPH State Public Health Entomologist.

Although DPH doesn't perform mosquito control, the agency does provide information that helps individuals, communities and local mosquito

control programs take actions to reduce mosquito populations. Mosquito control programs are managed at the local level.

Mosquitoes can develop in water that stands for more than 5 days. DPH recommends following the "7 Ts" to keep your home and yard mosquito-free:

- TIP over anything that can hold water, such as toys, plant saucers or vases. To disrupt mosquito breeding cycles, change water often, even daily, in items like dog bowls and bird baths.
- TOSS or recycle any unwanted yard items that may collect water, such as old tires, junk, or trash.
- TURN over items that can hold water like children's pools, wheelbarrows, or buckets.
- TIGHTEN tarps over items like boats, wood piles, grills, and pools.
- TAKE CARE of your property. Clean out debris from ditches, drains, and gutters. Keep grass cut low and trim or remove overgrown plants.
- TREAT items that can't be drained or emptied with appropriate mosquito control products.
- TEAM UP and talk with neighbors about reducing mosquitoes in and around your home and neighborhood.

DPH works in partnership with the U.S. Centers for Disease Control and Prevention (CDC) to monitor mosquito populations for disease that can

be spread to humans. DPH's mosquito surveillance program includes trapping and testing mosquitoes across the state and monitoring arbovirus activity in birds. Arboviruses include West Nile, which can be spread to humans by mosquitoes.

DPH also conducts surveillance for human cases of disease spread by mosquitoes and notifies local mosquito control programs to recommend they act when it is necessary.

Residents can assist DPH's mosquito-borne virus monitoring by submitting certain species of dead birds for lab testing. DPH's dead bird surveillance program takes place each year from March through November and helps identify where and when there is an increase in West Nile virus activity so additional control measures can be taken.

---

For more information on steps to prevent mosquito bites and eliminate mosquito breeding grounds, visit [dph.sc.gov/mosquitoes](https://dph.sc.gov/mosquitoes). Visit [dph.sc.gov/vbdoutreach](https://dph.sc.gov/vbdoutreach) for educational materials related to vector-borne diseases.

Use DPH's Mosquito-Borne Disease Viewer for the most current case counts of mosquito-borne disease in birds, mosquitoes, and certain animals.



# USDA TO PROVIDE \$1 BILLION TO LIVESTOCK PRODUCERS IMPACTED BY DROUGHT OR WILDFIRE IN 2023 AND 2024

## ASSISTANCE FOR FLOOD-IMPACTED PRODUCERS COMING SUMMER 2025

BY USDA FARM SERVICE AGENCY

U.S. Secretary of Agriculture Brooke L. Rollins today announced the release of Congressionally mandated Emergency Livestock Relief Program (ELRP) payments to cover grazing losses due to eligible drought or wildfire events in 2023 and/or 2024. Secretary Rollins committed on May 7 to release these emergency payments by May 30, and today she is delivering on that commitment ahead of schedule.

The U.S. Department of Agriculture's (USDA) Farm Service Agency (FSA) is leveraging existing Livestock Forage Disaster Program (LFP) data to streamline payment calculations and expedite relief. Emergency relief payments are automatically issued for producers who have an approved LFP application on file for 2023 and/or 2024.

The American Relief Act, 2025, provided funds for emergency relief payments. This program is the first of two programs authorized to assist with eligible losses suffered by livestock producers. FSA will announce additional ELRP assistance for other losses authorized by the Act, including flooding, later this summer.

### ELRP ELIGIBILITY

ELRP payment eligibility requires livestock producers to have suffered grazing losses in a county rated by the U.S. Drought Monitor as having a D2 (severe drought) for eight consecutive weeks or a D3 (extreme drought) or higher level of drought intensity during 2023, 2024 or both calendar years, and have applied and been approved for LFP.

Additionally, producers whose permitted grazing on federally managed lands was reduced due to

wildfire are also eligible for ELRP, if they applied and were approved for LFP in 2023, 2024 or both calendar years.

To streamline and simplify the delivery of ELRP benefits, producers are not required to submit an application for payment; however, they must have the following forms on file with FSA:

- CCC-853, Livestock Forage Disaster Program Application
- Form AD-2047, Customer Data Worksheet.
- Form CCC-902, Farm Operating Plan for an individual or legal entity.
- Form CCC-901, Member Information for Legal Entities (if applicable).
- Form FSA-510, Request for an Exception to the \$125,000 Payment Limitation for Certain Programs (if applicable). This form is required to be on file for both 2023 and 2024 to be eligible for the payment limitation exception.
- SF-3881, Direct Deposit.
- AD-1026, Highly Erodible Land Conservation (HELC) and Wetland Conservation (WC) Certification.

Most producers, especially those who have previously participated in FSA programs, likely have these forms on file. However, those who are uncertain and want to confirm the status of their forms, can contact their local FSA county office.

### ELRP PAYMENT CALCULATION

To expedite payments to eligible livestock producers, determine eligibility, and calculate an ELRP payment, FSA uses livestock inventories and drought-affected forage acreage or restricted

animal units and grazing days due to wildfire already reported by the producer on the CCC-853, Livestock Forage Disaster Program Application form, for 2023, 2024 or both calendar years.

ELRP payments will be equal to the eligible livestock producer's gross LFP calculated payment for the calendar year multiplied by an ELRP 2023 or 2024 payment factor to determine the total gross ELRP payments for 2023 and/or 2024. The initial payment factor for 2023 and 2024 ELRP payments is 35%. If additional funds remain, FSA may issue a second payment.

### SUPPLEMENTAL DISASTER ASSISTANCE TIMELINE

USDA is fully committed to expediting remaining disaster assistance provided by the American Relief Act, 2025. On May 7, we launched our 2023/2024 Supplemental Disaster Assistance public landing page where the status of USDA disaster assistance and block grant rollout timeline can be tracked. The page is updated regularly and accessible through [fsa.usda.gov](https://fsa.usda.gov).

The Act also authorized \$10 billion in economic loss assistance to producers of covered commodities based on 2024 planted and prevented planted acres. To date, USDA has delivered more than \$7.7 billion to producers through the Emergency Commodity Assistance Program (ECAP). The ECAP deadline is Aug. 15, 2025. Contact your local FSA county office for information.

To learn more, visit the ELRP website at [fsa.usda.gov/resources/programs/emergency-livestock-relief-program-elp](https://fsa.usda.gov/resources/programs/emergency-livestock-relief-program-elp).

# HEALTHY LAWNS IN SOUTH CAROLINA: WHY AERATION MATTERS

BY DENISE ATTAWAY, CLEMSON UNIVERSITY

Many homeowners want green, healthy lawns. But keeping grass strong and vibrant can be tricky.

Jackie Jordan, a Clemson Extension area urban horticulture agent, says soil aeration is key. And now is the time to aerate warm-season grasses.

### WHAT IS SOIL AERATION?

Soil aeration involves making small holes in the ground to help air, water and nutrients reach the roots. Over time, soil can get hard and packed down, especially in areas with heavy clay.

“When soil is packed down, or compacted, grass struggles to grow,” says Jordan. “Aeration helps loosen the soil, letting roots get oxygen, water and nutrients.”

### CORE VS. SPIKE AERATION

There are two main ways to aerate soil: core aeration and spike aeration.

Core aeration uses a tool to remove small plugs of soil. This leaves holes about 2 to 3 inches deep. Air and water can reach the roots through these holes. The soil plugs left on the lawn will naturally break down.

The spike aeration method uses solid spikes to poke holes in the soil. This can help in the short term, but may cause more soil compaction later.

“Core aeration is better for long-term lawn health,” Jordan advises. “It helps grass grow thicker and stronger.”



Core aeration uses a tool to remove small plugs of soil so that air and water can reach plant roots.

zoysia and St. Augustine should be aerated in late spring or early summer.

Cool-season grasses like fescue need aeration in the fall.

Jordan suggests aerating at least once a year, especially if the lawn sees a lot of foot traffic. Aerate when there is at least four weeks of good growing weather, before cold or hot temperatures set in, to help the plants recover.

### WHEN TO AERATE

In South Carolina, the best time to aerate lawns depends on the type of grass.

Warm-season grasses like Bermuda, centipede,

### BENEFITS OF SOIL AERATION

Aerating a lawn can offer several benefits, including:

- Loosen compacted or packed soil.
- Improve water and nutrient absorption.
- Encourage deeper root growth.
- Reduce thatch buildup.
- Make lawns more drought-resistant.

“A well-aerated lawn is healthier and more resilient,” Jordan said.

### AERATION COSTS AND TOOLS

Several options are available for people wanting their lawns aerated. Hiring a lawn care company is one option. Prices vary, so compare costs.

Doing it yourself is another option. Tools can be rented or bought. Renting aeration equipment typically costs about \$107 per day.

Manual core aerators are good for small lawns. Larger lawns are best aerated with a power-driven core aerator, which removes soil cores using hollow tubes. These make clean holes and loosen soil faster.

Jordan suggests aerating when the soil is moist, not wet. Make two passes over the lawn, first in one direction, then across.

For more information on lawn care and aeration, visit Clemson Extension's Home & Garden Information Center at [hgic.clemson.edu](https://hgic.clemson.edu).