

REDCLIFFE PLANTATION
181 REDCLIFFE RD
BEECH ISLAND, SC 29842
(803) 827-1473

**Historic
House Tours**
Temporarily
suspended.

For more information on programs
and group rates, please contact the
park.

Park Staff

Park Manager
Michael Scott

Park Interpreter
Chelsea Stutz

Park Technician
Jay Markiewicz

Redcliffe Update

Redcliffe will not be having house tours in the month of June due to the basement work. However, Redcliffe is working to slowly introduce a variety of thematic programs by the end of this month. Many new guidelines and procedures will be put in place for these, notably: staff will be wearing masks to protect you. Please wear a mask to protect them and other program participants. All of these programs will also have a limited number of spaces available, so be sure to check Redcliffe's website for information on registration availability. For more information, please call the park and keep an eye on the SC State Parks Facebook page and website, along with Redcliffe's website, southcarolinaparks.com/redcliffe for updates.

Redcliffe Southern Times

VOLUME 14, ISSUE 12

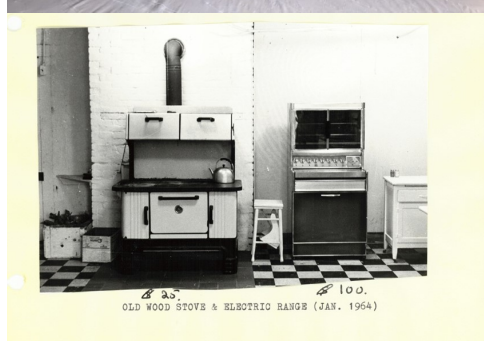
JUNE 2020

New Projects at Redcliffe: The Basement

Though SC State Parks were temporarily closed and house tours are still temporarily suspended, we at Redcliffe have been quite busy! If you visit the grounds and walk by the mansion, you may notice some work happening. Lead paint mitigation and asbestos removal has just begun on the Redcliffe mansion basement. Many who have visited Redcliffe and taken a tour of the structures and grounds know that the basement is not one of the spaces that a Park Ranger will include in the visit. This work is the first step in making the basement a part of future programs and potential tours.

This project will take approximately one month with workers at the site seven days a week. Due to the historic nature of the structure and the mission to preserve the historic architectural features in the home, which is on the National Register of Historic Places, a project of this scale can be much more tedious and time consuming because of necessary precautionary measures. For example, for the protection of the structure, power washers cannot be utilized to remove paint residues, but rather water from pump sprayers or wet rags are alternatives. In the pictures included, one can see that the bricks, created in the 1850's, are one of the many materials covered in lead paint. SC State Parks is taking extra measures to preserve the historic integrity of its structures while making it a safer space for visitors.

The basement space has served various roles over the generations. In the early 1900s, it housed a pantry and kitchen (which was previously in a separate building). The central hall was also used as a dining area in the late 1800s and into the turn of the century. Many of our long term visitors may remember that the Visitor Center and gift shop was previously located in that central hall before the new building for the Visitor Center was completed. A portion of the basement was also at one time an apartment for Patience Crawford, one of the former cooks and caretakers of Redcliffe in the 1930s, and the first African American to live in the Redcliffe mansion. The basement has most recently been utilized for artifact storage. Redcliffe staff will keep the public up to date on the progression of the project and when the mansion will again be available for the public to access on tours.

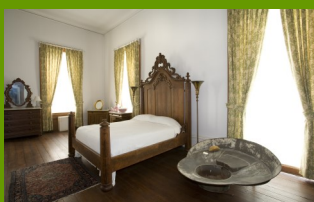
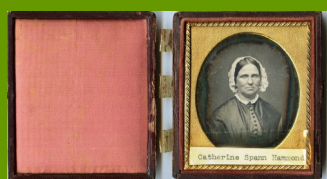


New Projects at Redcliffe: CAP!

Redcliffe Plantation SHS has been awarded the Collections Assessment for Preservation (CAP) grant. The CAP grant “provides small and mid-sized museums with partial funding toward a general conservation assessment. The assessment is a study of all of the institution’s collections, buildings, and building systems, as well as its policies and procedures relating to collections care.” By utilizing this grant Redcliffe will have two separate assessors examine the roughly 4,000 object collection and the mansion. As a result of this assessment, the staff of Redcliffe will receive guidance and recommendations on how to improve and manage our historic structure and collection. Only 75 institutions across the country received the grant this year. The CAP grant will directly benefit Redcliffe’s mission:

To preserve the historic structures, collections, and landscapes of Redcliffe Plantation, the 1859 home of South Carolina Governor James Henry Hammond; and to interpret the cultural history of the plantation from 1855 to 1975 for the public via interpretive programs, exhibits, and special events.

Keep an eye out for updates from Redcliffe staff as the CAP program gets underway.



Artifact(s) of the Month

At this point in Spring, many have their gardens in full bloom. John Shaw Billings and his wife Frederica were especially passionate about theirs. As we spotlighted in the March newsletter, Frederica and John had the beautiful camellias planted which still exist today beside the mansion. If one visits the grounds this month they will also notice that in bloom are several gardenia bushes between the mansion and the Magnolia Allée, also planted by Frederica and John in the 1930s. Frederica’s love for gardening and flowers can be seen in an artifact not currently housed at Redcliffe that staff wanted to share—one of John Shaw Billings’ silent home movies. The Moving Image Research Collections of the University of South Carolina have digitized and made available to the public a few of JSB’s home videos. One of these, titled in the collection “Shaw 306” was created between the years 1948-54 and details various aspects of the couple’s life at their home in New York City. This specific video has footage of Frederica on her garden terrace planting and



watering her garden, along with some Zinnias and Petunias. There are also some interesting scenes of the couple walking their dog, Lucky, in Central Park, Frederica scrapbooking, and the two of them riding around the city in their Rolls-Royce. Another exciting find in the video is the appearance of an artifact currently at Redcliffe—the cast iron garden table. About eight minutes into the home movie, viewers can see the garden table on the couple’s apartment terrace, which they both enjoyed reading at and for using as a foot rest. One cannot see the detail of the table in the video, so additional pictures here show details of the astrological signs surrounding the perimeter of the top. The pictures also show that there is a hinge and lock apparatus underneath the top which would allow it to tilt.

This table was created sometime between 1930-1950 and is actually a copy of a garden table at Balmoral Castle in Scotland. The full home

movie can be watched at the following link. [https://mirc.sc.edu/islandora/object/usc%](https://mirc.sc.edu/islandora/object/usc%20306)



Redcliffe Thanks the Super Smart Girls Club!!

Latina MacIntyre brought her Super Smart Girls Club members out to Redcliffe Plantation in February for an educational tour. The Super Smart Girl's Club is a non-profit youth organization for young girls that provides mentorship and motivation through community service and educational programming. The young ladies were a pleasure to work with and engaged with Park Interpreter Chelsea Stutz about the complex history of Redcliffe. They also got to end the program with a trip to the rooftop! After their tour, the Super Smart Girls raised \$200 from a Krispy Kreme fundraiser and donated those funds to Redcliffe! All funds from a donation will go toward maintaining the historic structures and collection as well as toward site interpretation. The Super Smart Girls have clubs in North and South Carolina and Georgia. More information about this organization can be found at supersmartgirlclub.org. We look forward to working with the Super Smart Girls more in the future!

