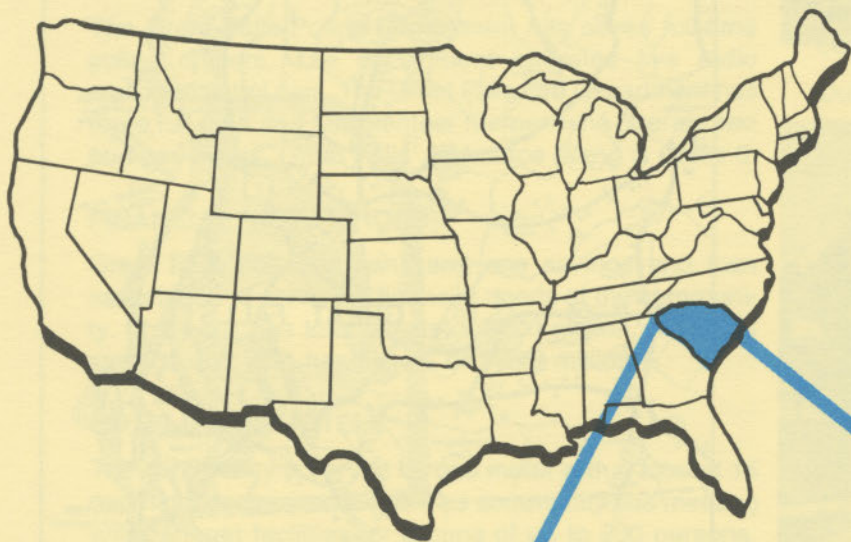


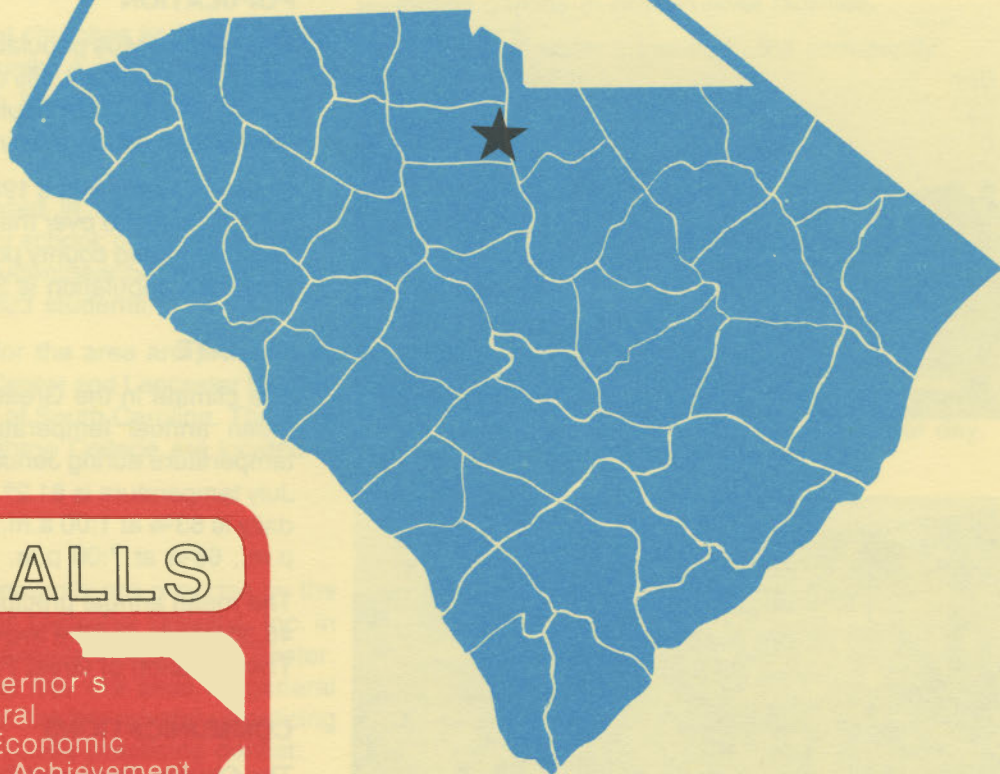
D49a5
2.G63-3
1985
Copy 1

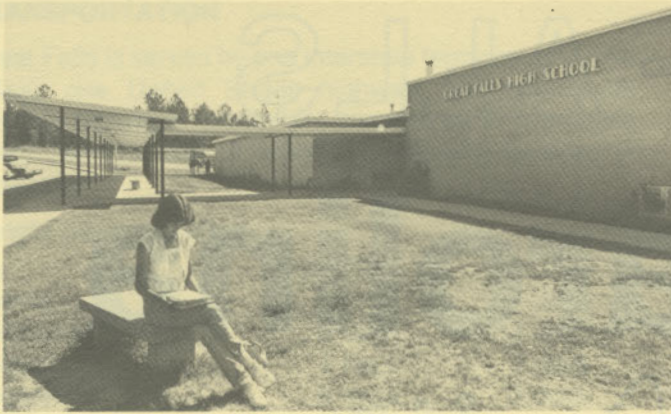
GREAT FALLS

south carolina



S. C. STATE LIBRARY
NOV 19 1985
STATE DOCUMENTS





Great Falls High School



Great Falls Library



United Methodist Church



MCM Industries, Inc. (Electronic Test Center)

LOCATION

As depicted on the cover, Great Falls is in the northcentral section of the state in Chester County. Charleston, South Carolina's busiest port, is 140 miles south. Columbia is 55 miles south and Greenville is 98 miles west. Great Falls is 243 miles east of Atlanta; 658 miles south of New York; and 2,766 miles east of San Francisco.



POPULATION

The 1980 census population of the city of Great Falls was 2,601. This was a 4.6% decrease from the 1970 population of 2,727. The population within a 15-mile radius is 55,675 and within a 30-mile radius is 237,480.

Chester County had a 1980 census population of 30,148, a 1.1% increase over the 1970 population of 29,811. The 1985 estimated county population is 30,500 and the 1990 projected population is 30,700.

CLIMATE

The climate in the Great Falls area is temperate with a mean annual temperature of 63.5° F. The average temperature during January is 45.4° F, while the average July temperature is 81.2° F. The average relative humidity daily is 83% at 1:00 a.m.; 87% at 7:00 a.m.; 52% at 1:00 p.m.; 65% at 7:00 p.m.

The mean annual precipitation in the Great Falls area is 46.36 inches and the average growing season is 226 days. The elevation of Great Falls is 471 feet above sea level.

COMMUNICATIONS

The *Chester News and Reporter* is published twice a week in the county seat and has a section devoted to Great Falls. Three large dailies also circulate in the community. Lancaster, 12 miles away, and Chester, 21 miles away, have AM and FM radio stations. Television reception is available from ten stations, representing the three major networks and ETV. Cable is also available in Great Falls.

Telephone service in the community is provided by the Chester Telephone Company.

GOVERNMENT

The community has a council form of municipal government. The six city council members and the mayor are elected for four-year terms. Chester County is governed locally by a council-supervisor form of government whose five members are elected for four-year terms.

POLICE AND FIRE

The Great Falls Police Department has seven full-time police officers. The department operates five radio equipped patrol cars. The Great Falls Fire Department has three full-time and 18 volunteer firemen who operate two pumper trucks. Great Falls' insurance rating is Class 6.

FINANCIAL INSTITUTIONS

Great Falls has one bank and one savings and loan association to serve the financial needs of the community. The bank has total assets of \$600 million, while the savings and loan has assets of \$68.5 million.

HOTELS AND MOTELS

The community is served by one motel with a total of 15 overnight accommodations. The community has meeting and banquet facilities for groups of up to 200 persons.

CHURCHES

Great Falls has 14 Protestant churches and one Catholic church located in the community. A Jewish house of worship is located in Columbia, 55 miles away.

EDUCATION

Great Falls, which is included in the Chester County Schools, has one elementary school; one middle school; and one high school. The student/teacher ratio is 16.7 to 1, with 79 teachers and 1,323 students.

Higher education facilities for the area are provided by the Chester County Career Center and Lancaster Regional Campus of the University of South Carolina. The York Technical College and Winthrop College are located in Rock Hill, 30 miles away.

MEDICAL SERVICES

Medical services for the community are provided by the 194-bed Elliott White Springs Memorial Hospital, Inc. in Lancaster and the Chester County Hospital in Chester. The Chester County Hospital has 119 beds for general care patients. The community has two privately-practicing medical doctors and one privately-practicing dentist.

RECREATION AND CIVIC FACILITIES

Recreation facilities in the community consist of several fully-equipped parks and playgrounds, two recreation buildings, tennis courts and athletic fields. Republic Golf Course has a nine-hole course. The city has an organized recreation program with supervised recreation for youth

and adults. Springs Park has a pool, bowling alley, skating rink, train rides and a recreation building. Fishing, boating, water skiing, sailing and other water sports can be enjoyed on the Catawba River, Nitrolee Pond and Lake Wateree. A recreation complex with two tennis courts, two ball fields and two all-purpose courts is available for residents.

POWER

Electric power is available to the community and surrounding areas from Duke Power Company. Duke Power, the nation's eighth-largest investor-owned operating electric utility, provides installation of service to industrial customers at no cost to the customer in most cases.

Duke Power Company representatives are available to assist industrial prospects at no cost or obligation in analyzing their electricity needs.

FUELS

Natural gas is supplied by the Chester County Natural Gas Authority.

WATER

The community obtains its municipal water supply from the Chester Metropolitan District. The system is capable of supplying water at a maximum rate of 7.2 million gallons per day, with an average daily demand of 3.5 million gallons. Treated water storage for the system consists of 600,000 gallons in elevated storage facilities and 2.0 million gallons in ground level facilities.

Analysis of water supplied in the community:

Total solids	140 mg/L
Alkalinity	22 mg/L
Calcium	5 mg/L
Hardness	22 mg/L
Iron	.7 mg/L
pH	6.6

SEWER

Great Falls is served by an extended aeration sewer system. The system is capable of treating 1.4 million gpd, and currently averages 635,000 gallons per day.

LABOR

Because labor information may change in this area, a current labor availability report prepared and kept up to date by the S. C. State Development Board will be furnished to prospective manufacturers at their request. The comprehensive report will include sources of recruitable labor, labor force characteristics, work force skill levels, earnings data and other pertinent information. The S. C. State Board for Technical and Comprehensive Education has the resources to recruit and train workers in accordance with a company's entry criteria. This training is at little or no cost to the employer. A lead-time schedule is developed to coordinate recruiting, testing, selecting, and training. This assures that persons will be able to move from training to their respective jobs at the time the plant is ready for initial production.

TRANSPORTATION

Great Falls is served by one interstate highway, I-77 (five miles), one United States highway, and two South Carolina highways. Great Falls is served by 32 authorized motor carriers, one of which has terminal facilities in Lancaster.

Freight Delivery Times:

To:	By Rail:	By Truck:
Atlanta	2 days	1 day
Baltimore	3 days	3 days
Chicago	4 days	3 days
Houston	6 days	3 days
New York	4 days	4 days
St. Louis	4 days	4 days
San Francisco	6 days	5 days

The Columbia Metropolitan Airport, 55 miles from the community, offers regularly scheduled commercial airline service on American, Bankair, Delta, Eastern, People Express, Piedmont and United. Columbia Metropolitan Airport has a modern air freight terminal. Private aircraft utilize the Lancaster County Airport, 12 miles away, which has a paved and lighted 6,000-foot runway. Services available at the Lancaster County Airport are RBN; 100LL fuel; Unicom; Vortac; and major airframe and major powerplant repairs.

FOREIGN TRADE ZONE

A Foreign Trade Zone is located in Summerville, South Carolina, 25 miles from the Port of Charleston and 115

miles from the community. The Foreign Trade Zone allows manufacturers to store, manufacture or process goods without paying U.S. Customs duties or worrying about quota compliance. This Foreign Trade Zone is served by a multimode transportation network which provides excellent accessibility to market areas.

TAXES

The assessment on industrial property in South Carolina is 10.5% of the market value. New industry is granted a five-year moratorium on general county taxes (with the exception of school taxes). The city tax rate is \$7.40 per \$100 of assessed value. The county rate is \$15.95 per \$100 of assessed value. The effective city tax rate (tax liability per \$100 of market value) is \$.78. The effective county rate is \$1.67. The state has no tax on a manufacturer's inventories, goods-in-process, raw materials or finished goods. Treatment facilities or equipment of manufacturing plants which control water or air pollution are exempt from all property taxation.

INDUSTRIAL SITES

Industrial sites are available in Great Falls with a wide range of geographic and topographic features. In all probability, a site that will meet the needs of most industries' requirements has been identified, catalogued, and entered into the State Development Board's Computerized Site Selection System. Detailed site information is available and will be furnished upon request.

MAJOR EMPLOYERS

Name	Product or Service	Employees
Acme Nameplate and Manufacturing, Inc.	Nameplates	100
Cinderella Knitting Mills	Men's and boys' undershirts	355
Duke Power Company	Electricity	121
MCM Industries, Inc.	Printed circuit boards	40

For Additional Information Contact:

SOUTH CAROLINA STATE DEVELOPMENT BOARD
P. O. Box 927, Columbia, South Carolina 29202
(803) 758-3145