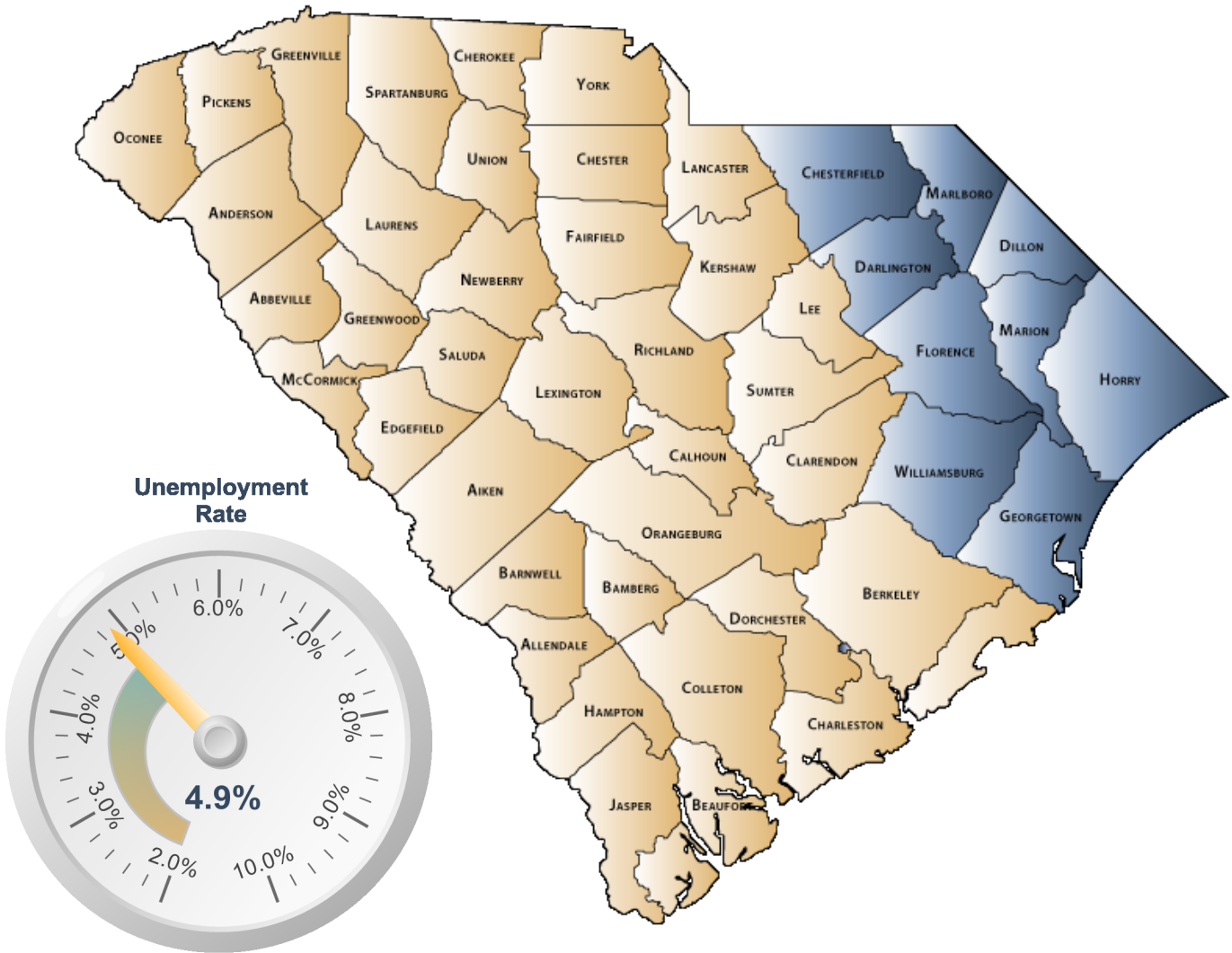


ECONOMIC PROFILE

NESA



S.C. Department of Employment & Workforce
Labor Market Information

1550 Gadsden Street, PO Box 995
Columbia, SC 29202
803-737-2660

www.SCWorkforceInfo.com

<http://www.NESASC.org/>

Updated: 04/21/2017

Table of Contents

1. Economic Data

Annual Unemployment Rates.....	3
Monthly Unemployment Rates.....	4
Area Job Openings.....	5
Unemployment Insurance	
Demographic Data.....	6
Industry Data.....	7
Occupation Data.....	8
Retail Sales.....	9

2. Demographic Data

Population	
Age.....	10
Race.....	11
Gender.....	11
Change.....	12
Employer Data	
Size of Establishments.....	13
Employment by Size of Establishment.....	13
20 Largest Employers.....	14

3. Industry Data

Employment by Industry.....	15
New Startup Firms.....	16
Top Occupational Openings.....	17
New Hires by Industry.....	18
Average Annual Wage by Industry.....	19
Age of Workers by Industry.....	20

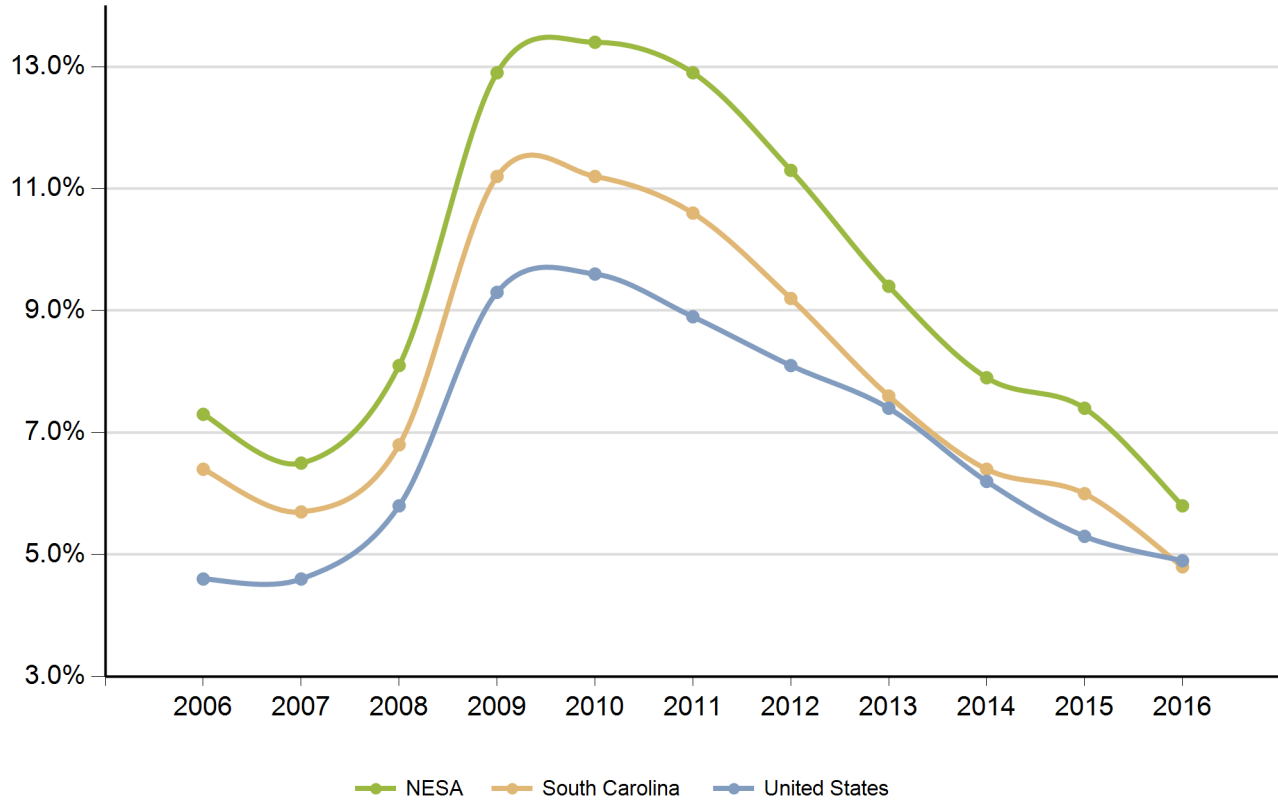
4. Education Data

Educational Attainment.....	21
Graduate Trends.....	22
Educational Institutions.....	23

***Disclaimer: All data provided is an aggregate of the counties' data that comprise the NESAS**

Annual Unemployment Rate (Unadjusted)

Trends

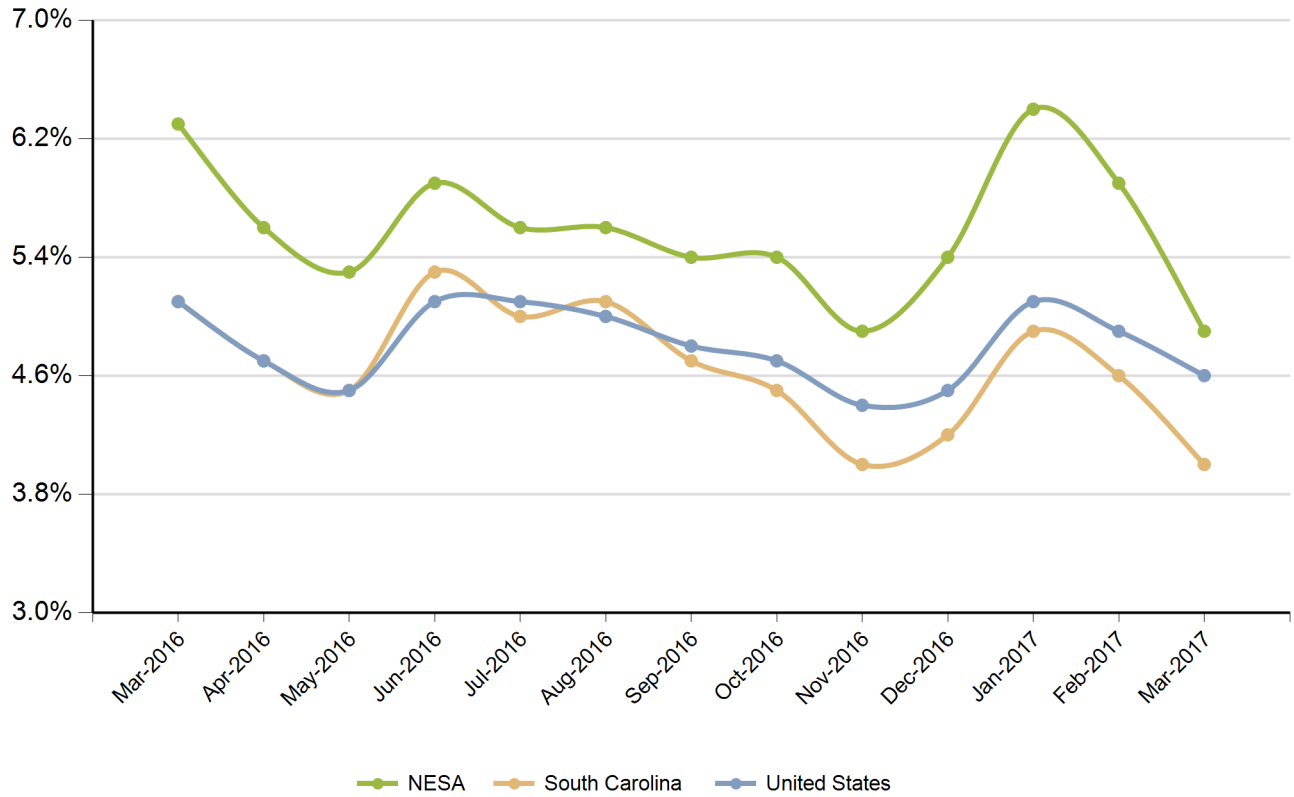


Year	NESA			South Carolina			United States		
	Employed	Unemployed	Unemp Rate	Employed	Unemployed	Unemp Rate	Employed	Unemployed	Unemp Rate
2006	300,854	23,647	7.3%	1,973,337	135,760	6.4%	144,427,000	7,001,000	4.6%
2007	303,143	21,007	6.5%	2,005,686	120,205	5.7%	146,047,000	7,078,000	4.6%
2008	300,152	26,358	8.1%	1,996,409	145,823	6.8%	145,362,000	8,924,000	5.8%
2009	286,394	42,430	12.9%	1,910,670	242,075	11.2%	139,877,000	14,265,000	9.3%
2010	281,991	43,695	13.4%	1,915,045	240,623	11.2%	139,064,000	14,825,000	9.6%
2011	283,764	42,148	12.9%	1,945,900	229,623	10.6%	139,869,000	13,747,000	8.9%
2012	287,126	36,605	11.3%	1,985,618	201,260	9.2%	142,469,000	12,506,000	8.1%
2013	292,338	30,321	9.4%	2,026,666	167,647	7.6%	143,929,000	11,460,000	7.4%
2014	297,803	25,372	7.9%	2,081,511	143,151	6.4%	146,305,000	9,617,000	6.2%
2015	303,456	24,284	7.4%	2,134,637	135,746	6.0%	148,834,000	8,296,000	5.3%
2016	310,566	19,291	5.8%	2,186,740	111,067	4.8%	151,436,000	7,751,000	4.9%

Source: SC Department of Employment & Workforce

Monthly Unemployment Rate (Unadjusted)

Past 13 Months



Period	NESA	South Carolina	United States
Mar-2016	6.3%	5.1%	5.1%
Apr-2016	5.6%	4.7%	4.7%
May-2016	5.3%	4.5%	4.5%
Jun-2016	5.9%	5.3%	5.1%
Jul-2016	5.6%	5.0%	5.1%
Aug-2016	5.6%	5.1%	5.0%
Sep-2016	5.4%	4.7%	4.8%
Oct-2016	5.4%	4.5%	4.7%
Nov-2016	4.9%	4.0%	4.4%
Dec-2016	5.4%	4.2%	4.5%
Jan-2017	6.4%	4.9%	5.1%
Feb-2017	5.9%	4.6%	4.9%
Mar-2017	4.9%	4.0%	4.6%

Source: SC Department of Employment & Workforce

Area Job Openings

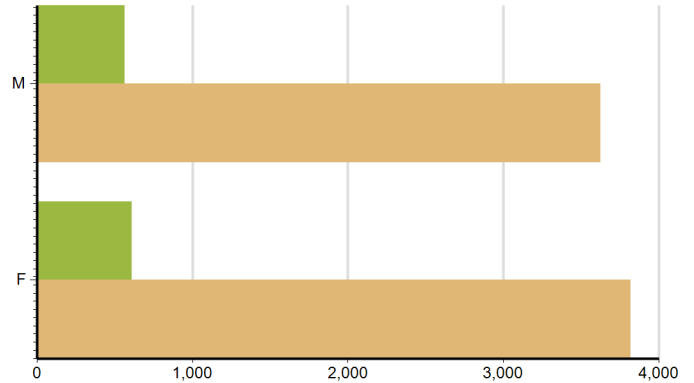
Period	NESAS				South Carolina			
	Employed	Unemployed	Unemp Rate	Job Openings	Employed	Unemployed	Unemp Rate	Job Openings
Mar-2016	306,240	20,649	6.3%	9,448	2,174,229	122,223	5.3%	61,889
Apr-2016	311,953	18,557	5.6%	9,102	2,177,304	119,636	5.2%	67,021
May-2016	316,039	17,800	5.3%	8,185	2,180,526	116,513	5.1%	63,126
Jun-2016	320,670	20,236	5.9%	8,747	2,183,933	113,034	4.9%	61,518
Jul-2016	321,698	18,949	5.6%	8,659	2,187,396	109,596	4.8%	61,572
Aug-2016	318,834	19,005	5.6%	5,134	2,190,670	106,559	4.6%	63,800
Sep-2016	313,740	18,017	5.4%	7,908	2,193,612	104,025	4.5%	61,522
Oct-2016	308,647	17,632	5.4%	7,204	2,196,147	101,772	4.4%	59,888
Nov-2016	308,230	16,040	4.9%	6,710	2,198,274	99,867	4.3%	59,494
Dec-2016	305,137	17,459	5.4%	6,076	2,199,862	98,225	4.3%	55,454
Jan-2017	305,976	20,819	6.4%	6,648	2,209,188	101,455	4.4%	64,254
Feb-2017	308,784	19,450	5.9%	7,254	2,220,060	103,363	4.4%	61,052
Mar-2017	315,449	16,381	4.9%	8,372	2,229,599	103,587	4.4%	59,863

Source: SC Department of Employment & Workforce, The Conference Board's Help Wanted OnLine® Data Series
South Carolina Data is Seasonally Adjusted

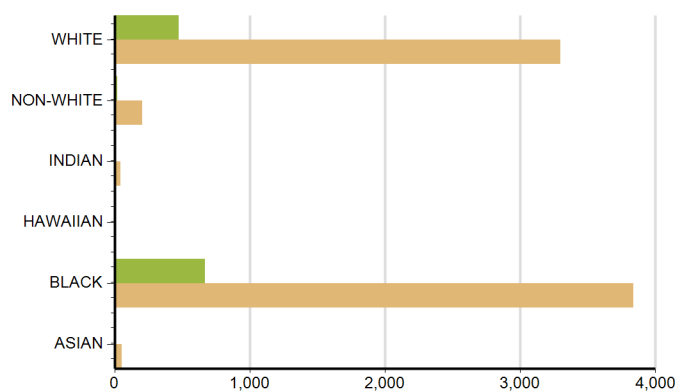
Characteristics of Unemployment Insurance Claimants

March-2017

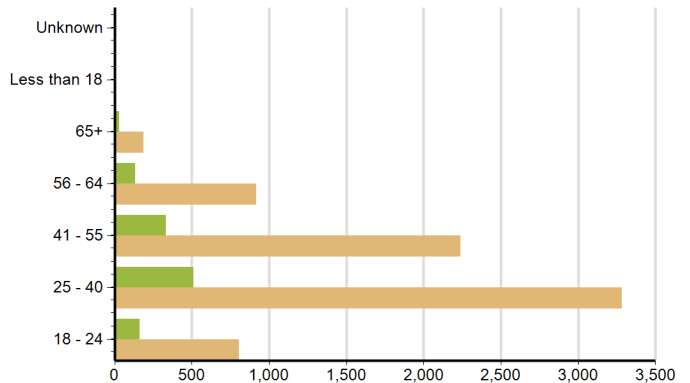
Gender	NESA	South Carolina
Female	610	3,821
Male	565	3,625



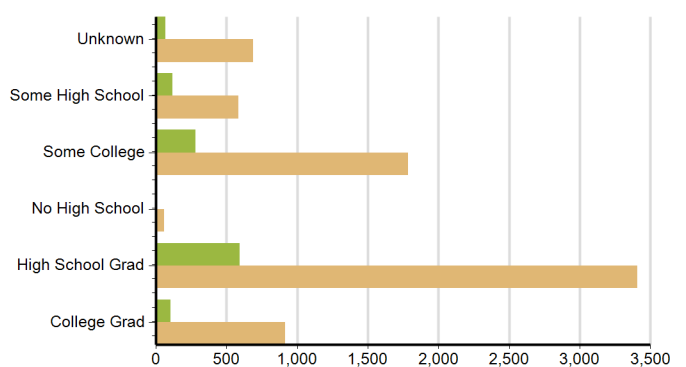
Race	NESA	South Carolina
ASIAN	2	54
BLACK	668	3,838
HAWAIIAN	1	8
INDIAN	6	45
NON-WHITE	22	204
WHITE	476	3,297



Age Group	NESA	South Carolina
18 - 24	162	805
25 - 40	510	3,283
41 - 55	335	2,241
56 - 64	134	918
65+	32	188
Less than 18	1	5
Unknown	1	6



Education	NESA	South Carolina
College Grad	105	917
High School Grad	595	3,408
No High School	10	59
Some College	281	1,786
Some High School	117	586
Unknown	67	690

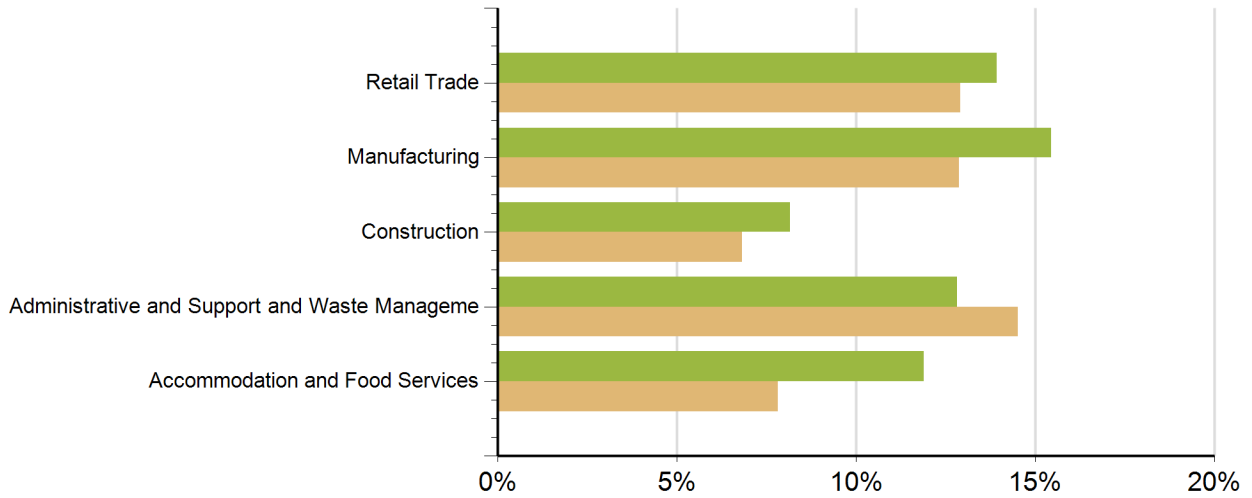


Source: SC Department of Employment & Workforce

Characteristics of Unemployment Insurance Claims by Industry

Industry Groups with Largest Number of Claims

March-2017



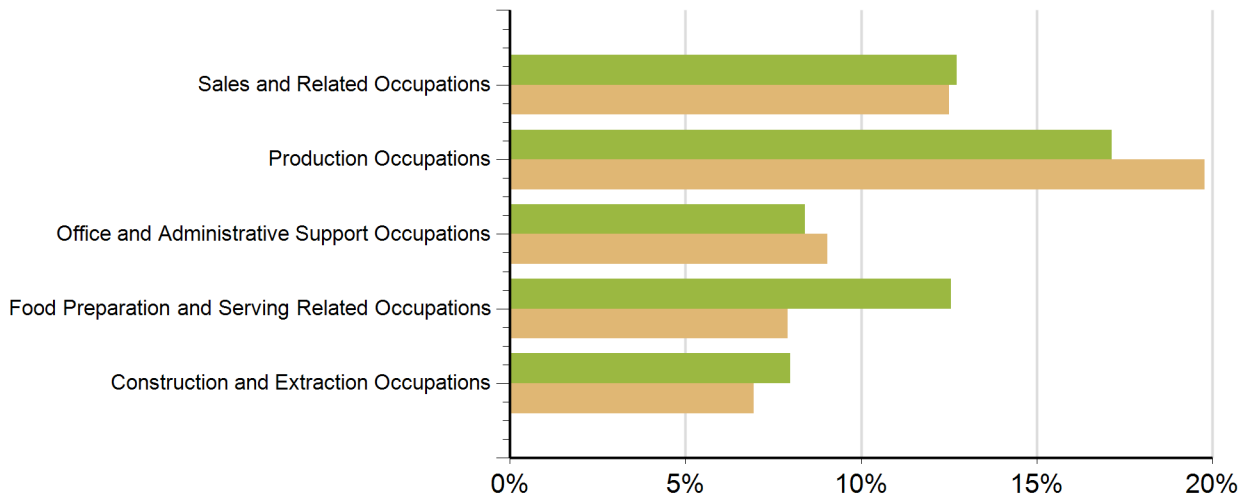
Industry	NESA	South Carolina
Retail Trade	164	963
Finance and Insurance	28	188
Transportation and Warehousing	20	261
Management of Companies and Enterprises	7	26
Wholesale Trade	25	341
Health Care and Social Assistance	87	542
Agriculture, Forestry, Fishing and Hunting	6	46
Construction	96	508
Arts, Entertainment, and Recreation	13	48
Accommodation and Food Services	140	583
Public Administration	25	128
Professional, Scientific, and Technical Services	43	427
Administrative and Support and Waste Management	151	1,083
Other Services (except Public Administration)	24	163
Unknown	112	823
Information	12	132
Real Estate and Rental and Leasing	26	107
Educational Services	16	112
Mining, Quarrying, and Oil and Gas Extraction	1	6
Manufacturing	182	961

Source: SC Department of Employment & Workforce

Characteristics of Unemployment Insurance Claims by Occupation

Occupation Groups with Largest Number of Claims

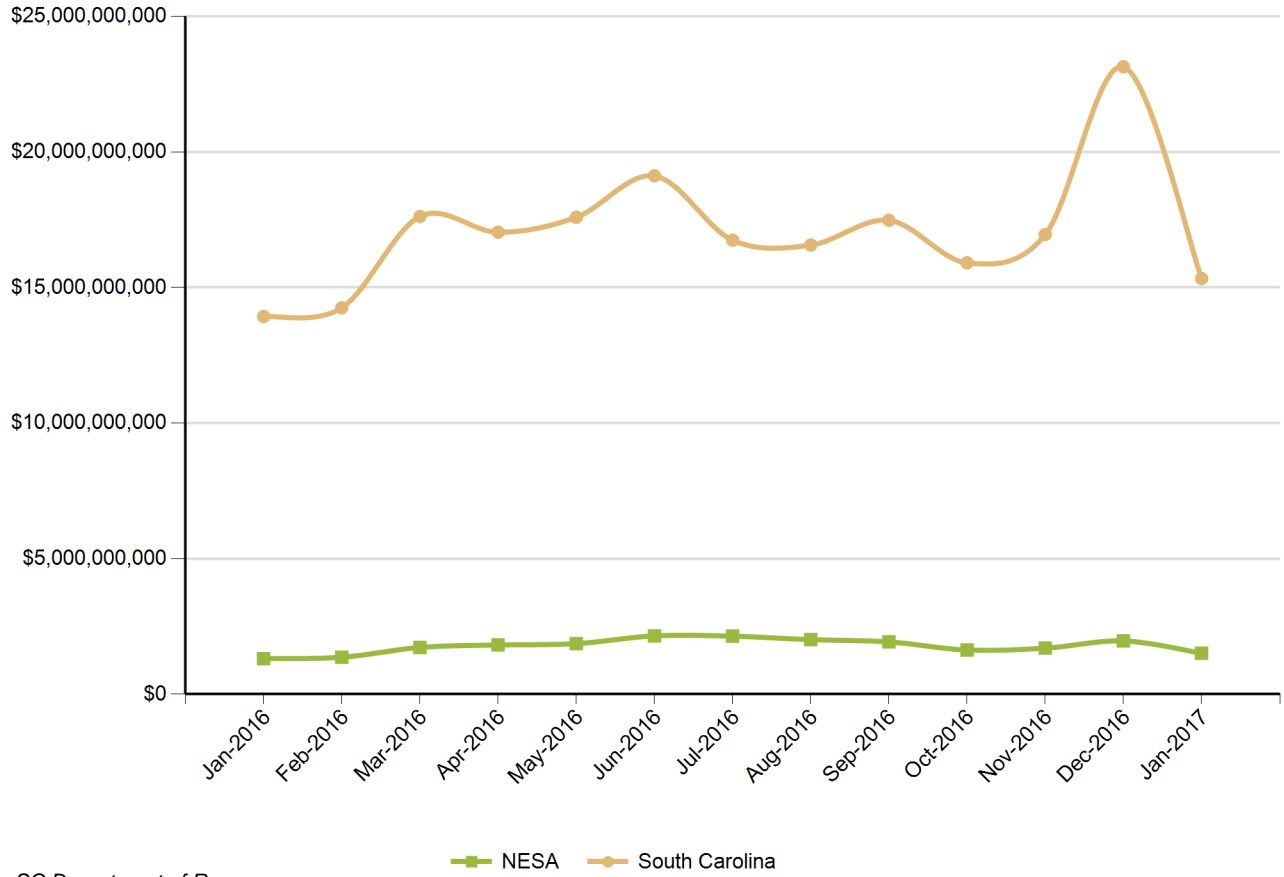
March-2017



Occupation	NESA	South Carolina
Architecture and Engineering Occupations	6	119
Arts, Design, Entertainment, Sports, and Media Occ	12	53
Building and Grounds Cleaning and Maintenance Occu	55	265
Business and Financial Operations Occupations	31	277
Community and Social Service Occupations	6	53
Computer and Mathematical Occupations	11	124
Construction and Extraction Occupations	94	518
Education, Training, and Library Occupations	8	82
Farming, Fishing, and Forestry Occupations	6	32
Food Preparation and Serving Related Occupations	148	590
Healthcare Practitioners and Technical Occupations	35	163
Healthcare Support Occupations	61	335
Installation, Maintenance, and Repair Occupations	42	265
Legal Occupations	4	26
Life, Physical, and Social Science Occupations	1	10
Management Occupations	73	506
Military Specific Occupations	6	32
Office and Administrative Support Occupations	99	675
Personal Care and Service Occupations	17	103
Production Occupations	202	1,476
Protective Service Occupations	10	78
Sales and Related Occupations	150	933
Transportation and Material Moving Occupations	52	319
Unknown	49	427

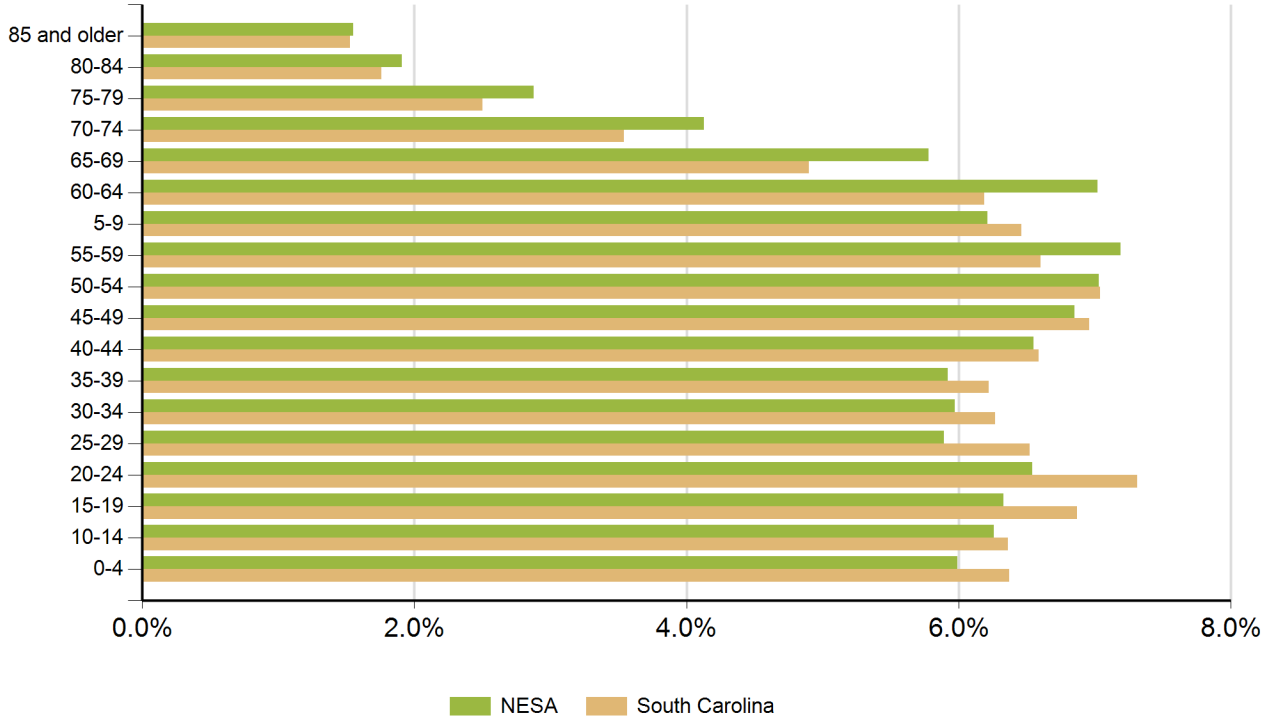
Source: SC Department of Employment & Workforce

Retail Sales



Source: SC Department of Revenue

Population by Age



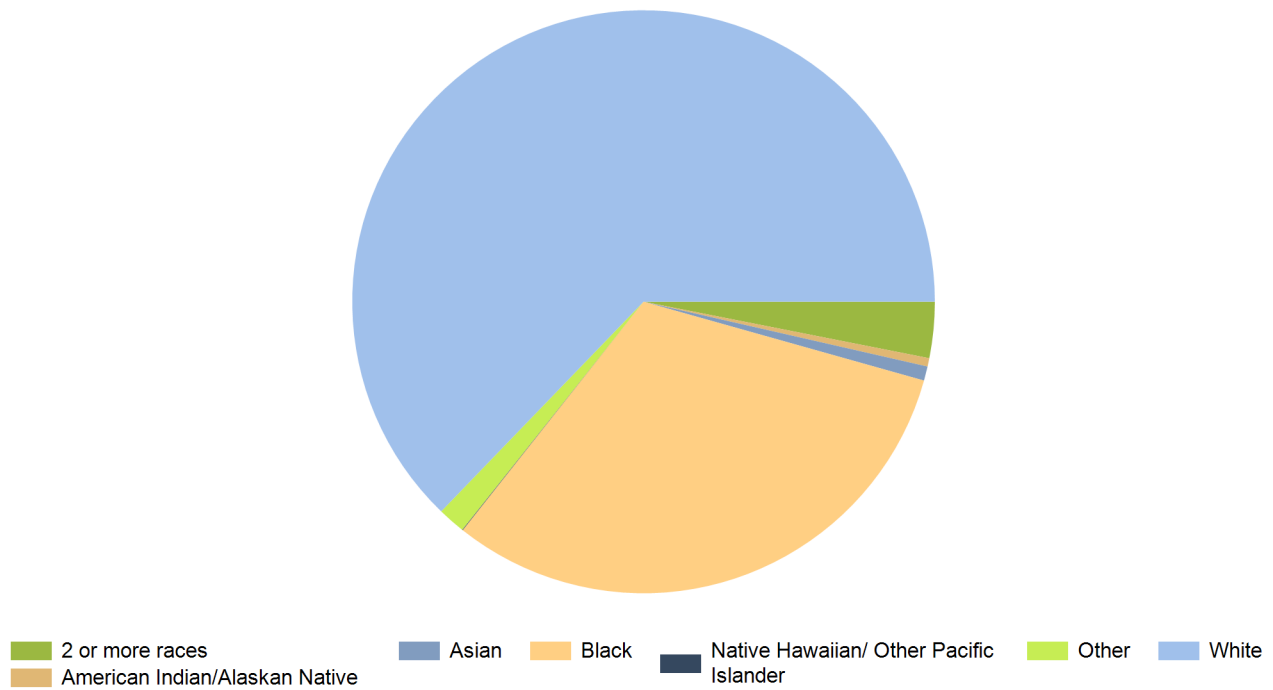
Age Range	NESA	South Carolina	United States
0-4	42,869	298,242	20,052,112
5-9	44,482	302,111	20,409,060
10-14	44,816	297,443	20,672,609
15-19	45,304	321,540	21,715,074
20-24	46,812	342,237	22,099,887
25-29	42,138	305,167	21,243,365
30-34	42,753	293,464	20,467,912
35-39	42,405	291,183	19,876,161
40-44	46,911	308,158	20,998,001
45-49	49,075	325,660	22,109,946
50-54	50,354	329,431	22,396,322
55-59	51,493	309,061	20,165,892
60-64	50,260	289,690	17,479,211
65-69	41,371	229,251	13,189,508
70-74	29,573	165,797	9,767,522
75-79	20,636	117,187	7,438,750
80-84	13,641	82,223	5,781,697
85 and older	11,108	71,757	5,673,565

Source: US Census Bureau, American Community Survey

Population by Race

Race	NESA	%	South Carolina	%	United States	%
White	456,568	62.8%	3,144,146	66.0%	230,592,579	72.0%
Black	227,677	31.3%	1,298,534	27.3%	39,167,010	12.2%
American Indian/Alaskan Native	3,377	0.5%	14,732	0.3%	2,540,309	0.8%
Asian	5,738	0.8%	61,097	1.3%	15,231,962	4.8%
Native Hawaiian/ Other Pacific Islander	236	0.0%	2,128	0.0%	526,347	0.2%
2 or more races	22,584	3.1%	169,670	3.6%	17,464,666	5.5%
Other	11,113	1.5%	74,130	1.6%	14,746,054	4.6%

Source: US Census Bureau, American Community Survey



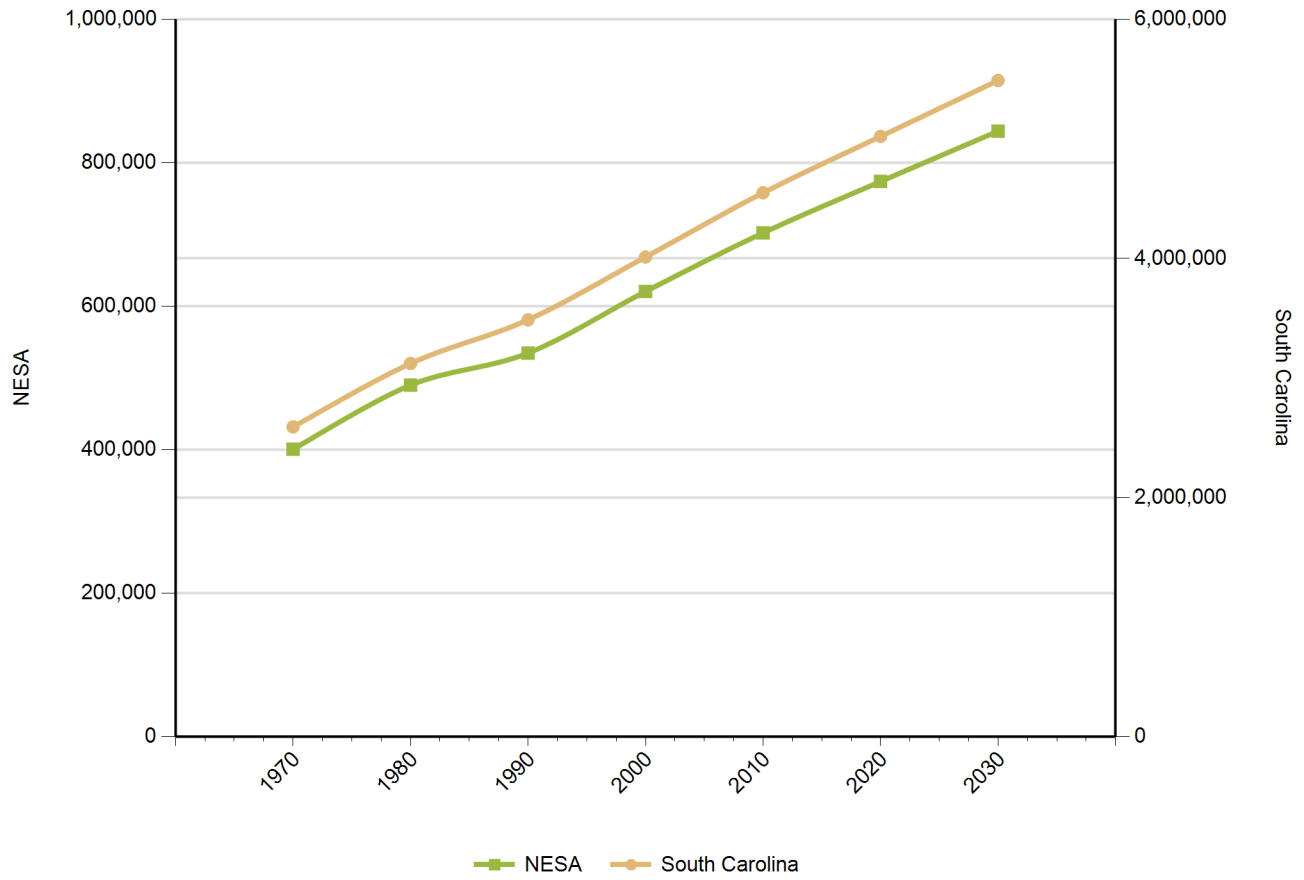
Population by Gender

Gender	NESA	South Carolina	United States
Female	371,406	2,403,297	158,289,182
Male	344,595	2,276,305	153,247,412

Source: US Census Bureau, American Community Survey

Population Change

Historical and Projected



Year	NESA	South Carolina
1970	400,739	2,590,713
1980	490,043	3,121,820
1990	534,669	3,486,310
2000	620,572	4,012,012
2010	702,270	4,549,150
2020	773,900	5,020,400
2030	844,120	5,488,460

Source: US Census Bureau

Employers by Size of Establishment

Employees	NESA	South Carolina
0 to 4	9,120	72,215
5 to 9	3,160	19,964
10 to 19	2,376	14,629
20 to 49	1,662	11,292
50 to 99	600	4,446
100 to 249	338	2,717
250 to 499	82	824
500 to 999	25	376
1000 +	15	286

Employment by Size of Establishment

Employees	NESA	South Carolina
0 to 4	15,128	109,185
5 to 9	21,106	133,038
10 to 19	32,165	199,397
20 to 49	51,113	346,711
50 to 99	41,055	305,282
100 to 249	49,578	411,824
250 to 499	27,648	284,463
500 to 999	17,430	256,747
1000 +	28,424	731,712

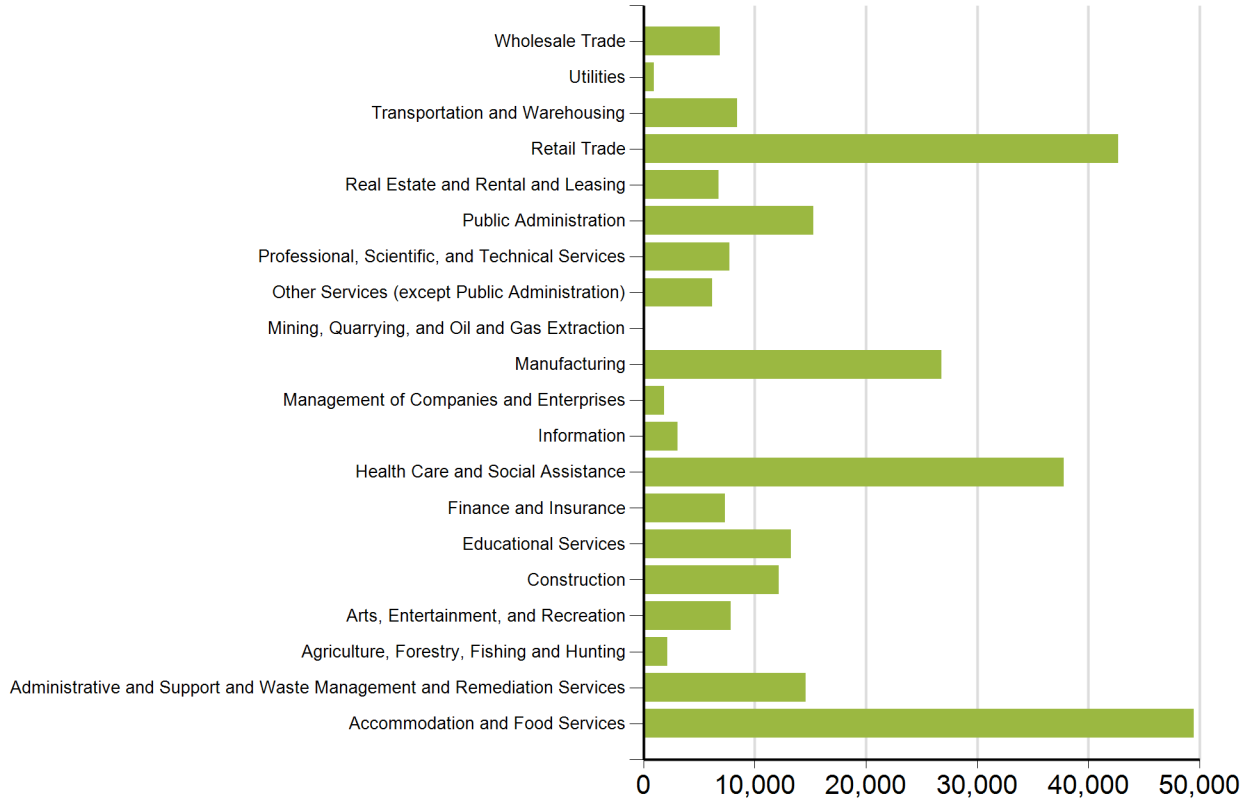
Source: SC Department of Employment & Workforce - Q3 2016

20 Largestest Employers *(Listed Alphabetically)*

Corporation Name
WAL-MART ASSOCIATES INC
HORRY COUNTY DEPARTMENT OF EDUCATIO
MCLEOD REGIONAL MEDICAL CENTER
HORRY COUNTY COUNCIL
FLORENCE PUBLIC SCHOOL DISTRICT #1
SCHAEFFLER GROUP USA INC
FOOD LION LLC
GEORGETOWN HOSPITAL SYSTEM
COASTAL CAROLINA UNIVERSITY
CAROLINAS HOSPITAL SYSTEM
GEORGETOWN COUNTY DEPT OF EDUCATION
WYNDHAM VACATION OWNERSHIP INC
GRAND STRAND REGIONAL MEDICAL CENTE
WAL-MART ASSOCIATES INC.
SONOCO PRODUCTS COMPANY
DARLINGTON COUNTY SCHOOL DISTRICT
SOUTHEAST RESTAURANTS CORPORATION
ASSURANT GROUP
CITY OF MYRTLE BEACH
CONWAY HOSPITAL INC

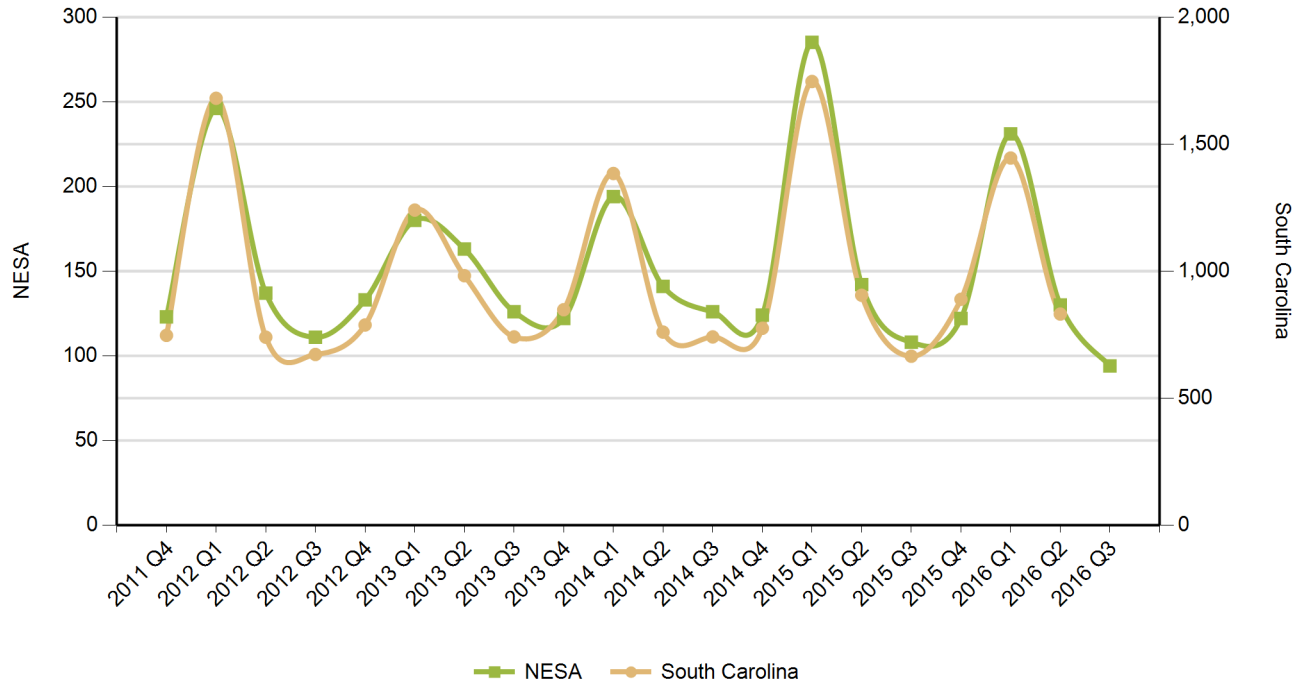
Source: SC Department of Employment & Workforce - Q3 2016

Employment by Industry



Source: SC Department of Employment & Workforce
 Quarterly Census of Employment and Wages (QCEW) - Q3 2016

New Startup Firms



Quarter	NESA	South Carolina
2016 Q3	94	
2016 Q2	130	831
2016 Q1	231	1,445
2015 Q4	122	889
2015 Q3	108	665
2015 Q2	142	905
2015 Q1	285	1,746
2014 Q4	124	775
2014 Q3	126	741
2014 Q2	141	760
2014 Q1	194	1,384
2013 Q4	122	848
2013 Q3	126	741
2013 Q2	163	982
2013 Q1	180	1,240
2012 Q4	133	788
2012 Q3	111	672
2012 Q2	137	740
2012 Q1	246	1,680
2011 Q4	123	747

Note: A firm is included in the count when it does not have a UI Account Number in the previous quarter and has a Setup Date that falls in the quarter displayed.

Source: SC Department of Employment & Workforce

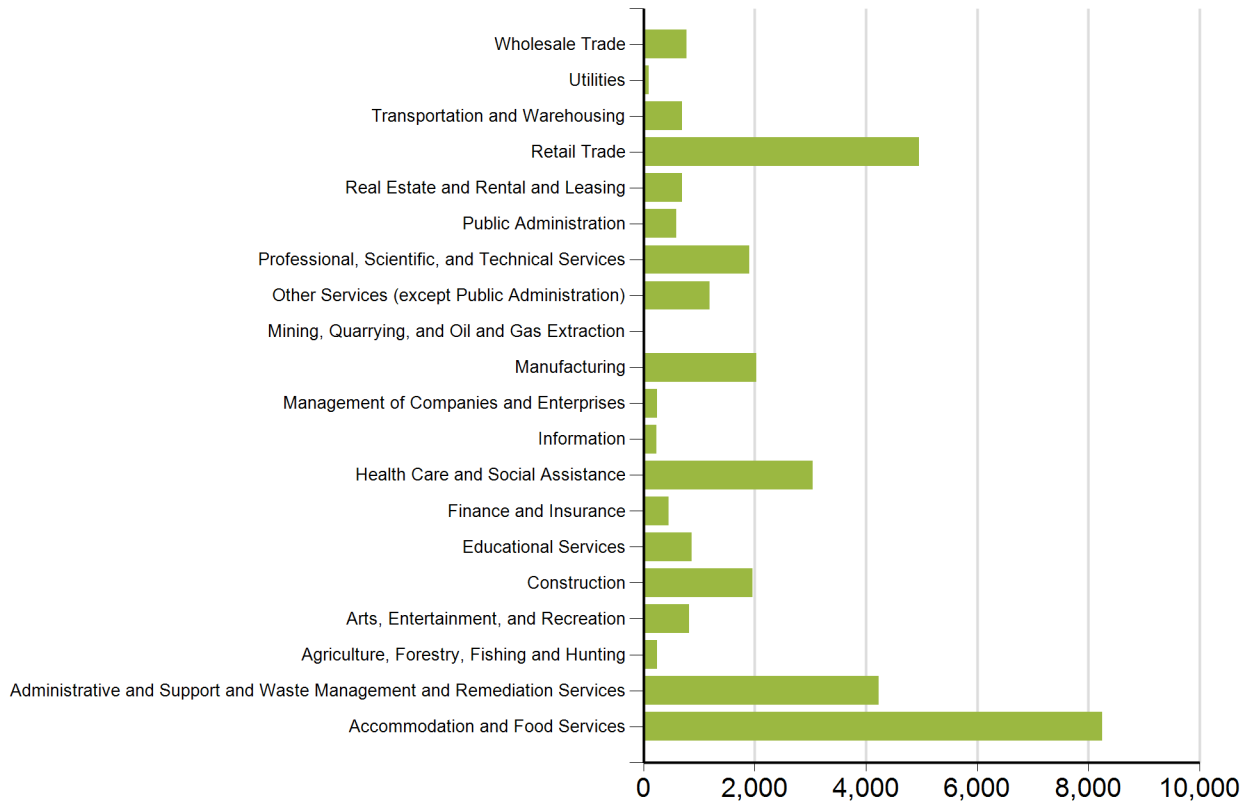
Top 20 Occupational Openings

April 2016

Occupation Name (Soccode)	Job Opening
Registered Nurses (29-1141)	806
Heavy and Tractor-Trailer Truck Drivers (53-3032)	610
Retail Salespersons (41-2031)	268
First-Line Supervisors of Retail Sales Workers (41-1011)	263
First-Line Supervisors of Food Preparation and Serving Workers (35-1012)	238
Maids and Housekeeping Cleaners (37-2012)	210
Maintenance and Repair Workers, General (49-9071)	183
Physical Therapists (29-1123)	160
Hotel, Motel, and Resort Desk Clerks (43-4081)	154
Customer Service Representatives (43-4051)	138
Waiters and Waitresses (35-3031)	135
Landscaping and Groundskeeping Workers (37-3011)	124
Combined Food Preparation and Serving Workers, Including Fast Food (35-3021)	120
Automotive Service Technicians and Mechanics (49-3023)	108
First-Line Supervisors of Office and Administrative Support Workers (43-1011)	105
Janitors and Cleaners, Except Maids and Housekeeping Cleaners (37-2011)	99
Speech-Language Pathologists (29-1127)	98
Occupational Therapists (29-1122)	96
Cooks, Restaurant (35-2014)	94
Medical and Health Services Managers (11-9111)	87

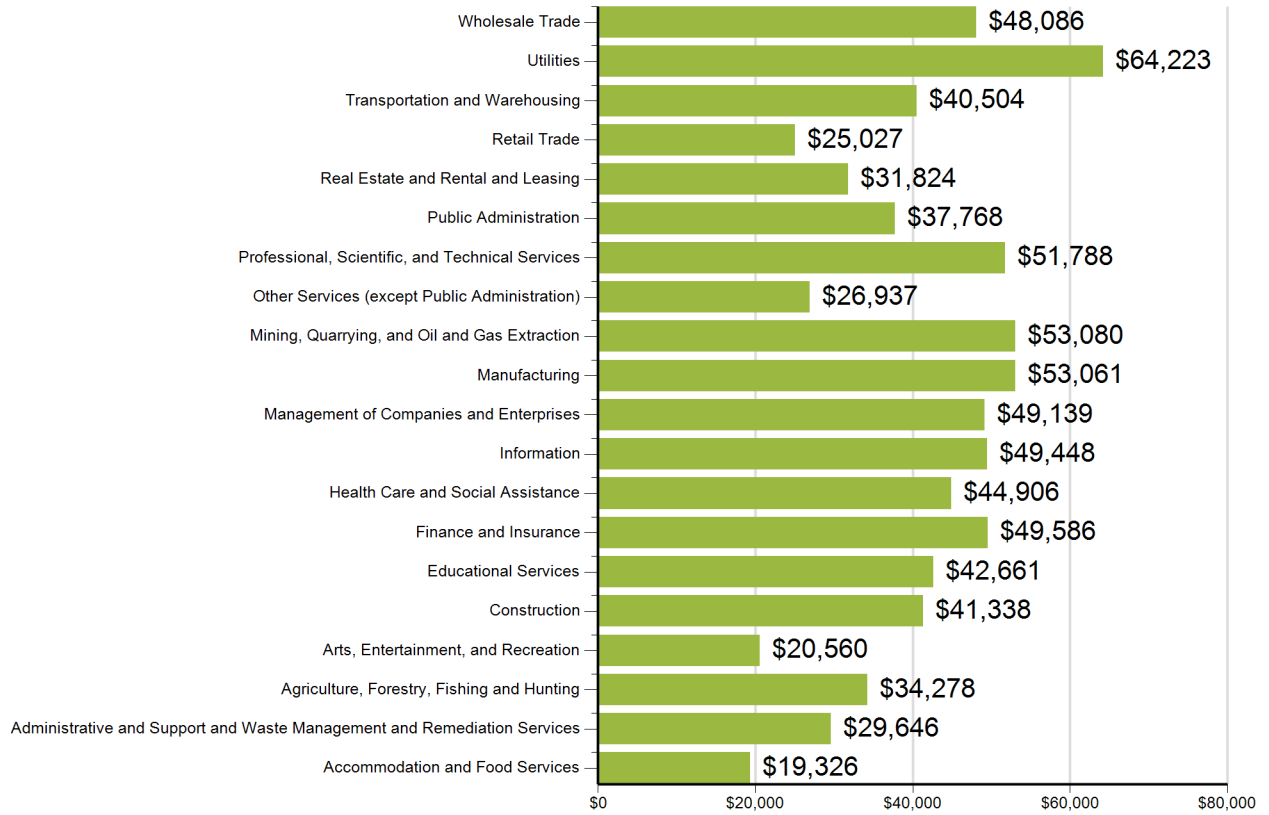
Source: SC Department of Employment & Workforce and The Conference Board's Help Wanted OnLine® Data Series

New Hires by Industry



US Census Bureau, Local Employment Dynamics - Q1 2014

Average Annual Wage by Industry



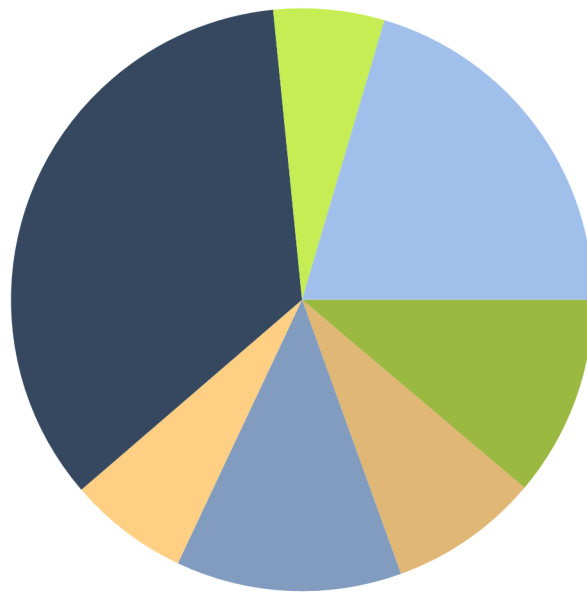
Source: SC Department of Employment & Workforce
 Quarterly Census of Employment and Wages (QCEW) - Q3
 2016

Age of Workers by Industry

Industry	14-18	19-21	22-24	25-34	35-44	45-54	55-64	65+
Total, All Industries	4,251	10,698	14,944	50,091	53,028	54,652	41,830	14,787
Agriculture, Forestry, Fishing and Hunting	8	48	79	263	392	437	358	181
Mining, Quarrying, and Oil and Gas Extraction	0	0	4	21	32	47	29	7
Utilities	0	9	38	353	385	540	332	78
Construction	38	231	403	1,877	2,278	2,326	1,554	549
Manufacturing	48	417	1,015	4,584	6,394	7,636	5,745	999
Wholesale Trade	26	129	265	1,317	1,728	1,882	1,375	543
Retail Trade	1,301	3,183	3,307	7,466	6,337	6,798	5,317	2,503
Transportation and Warehousing	9	203	319	1,067	1,360	1,445	1,082	332
Information	47	88	151	776	911	687	408	108
Finance and Insurance	8	86	326	1,853	1,720	1,532	1,151	415
Real Estate and Rental and Leasing	21	111	219	903	1,015	1,253	1,090	576
Professional, Scientific, and Technical Services	24	134	293	1,641	1,819	1,772	1,345	591
Management of Companies and Enterprises	19	40	81	317	368	428	278	129
Administrative and Support and Waste Management and Remediation	78	632	1,077	3,244	2,896	2,897	2,067	843
Educational Services	21	132	598	3,392	4,873	5,564	5,259	1,468
Health Care and Social Assistance	93	656	1,491	7,372	8,769	8,424	6,598	1,839
Arts, Entertainment, and Recreation	148	298	423	1,116	954	943	932	902
Accommodation and Food Services	2,207	3,876	4,026	8,961	6,458	5,325	3,131	1,315
Other Services (except Public Administration)	72	227	343	1,131	1,289	1,476	1,175	635
Public Administration	19	144	450	2,380	2,924	3,102	2,518	741

Source: US Census Bureau, Local Employment Dynamics - Q1 2014

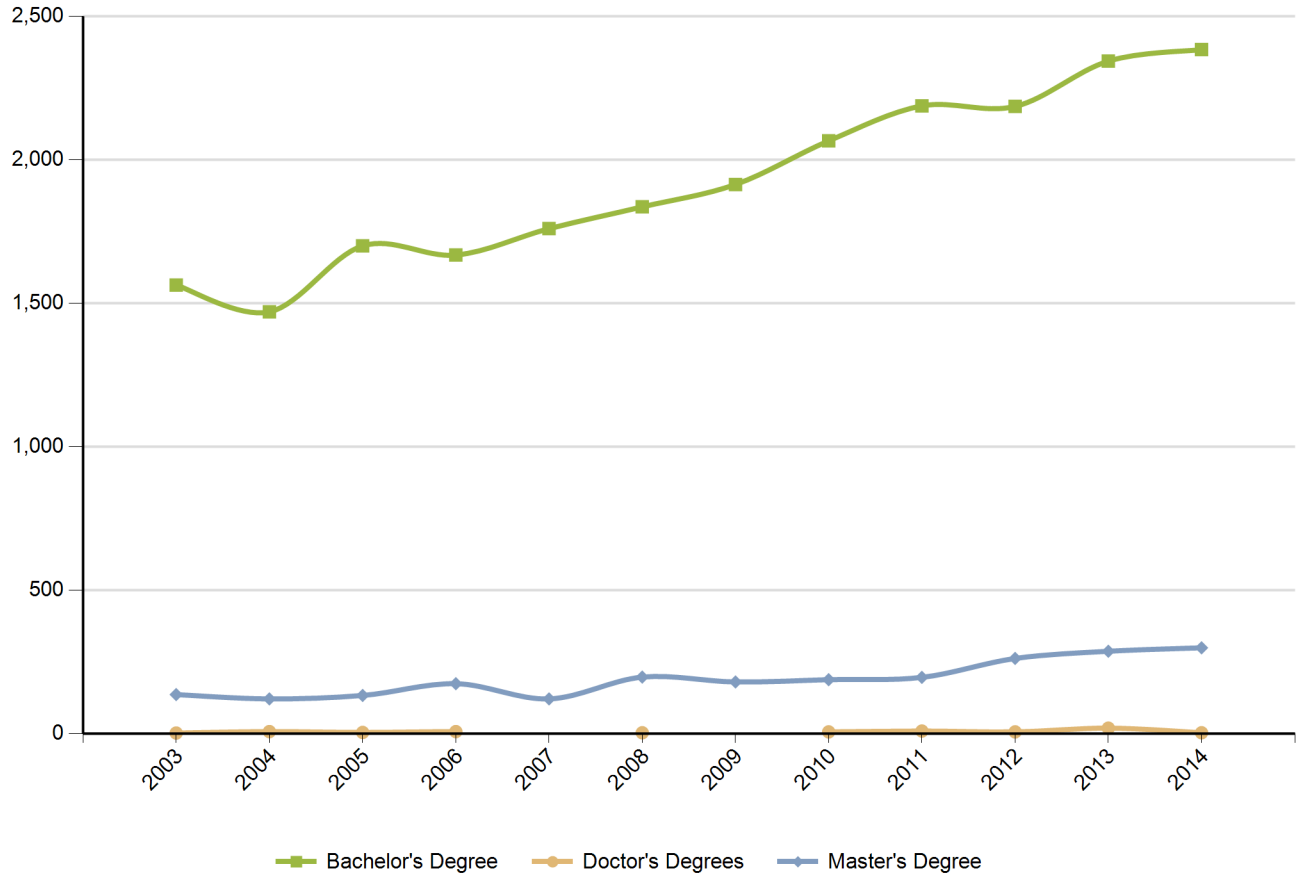
Educational Attainment *(Population 25 Years and Older)*



9th to 12th No Diploma
 Bachelor's Degree
 High School Graduate
 Some College
 Associate's Degree
 Graduate Degree
 Less Than 9th Grade

Source: US Census Bureau, American Community Survey - 2013 5-Year Estimates

Graduate Trends



Source: Institute of Education Sciences (IES), Integrated Postsecondary Education Data System

Educational Institutions

Academy for Careers and Technology
2697 E Hwy 76
Mullins, SC 29574
843.423.1941
<http://www.mcact.org>
2014 Degrees Awarded: 23

Coastal Carolina University
103 Tom Trout Drive
Conway, SC 29526
843.347.3161
<http://www.coastal.edu>
2014 Degrees Awarded: 1785

Florence-Darlington Technical College
2715 W. Lucas Street
Florence, SC 29501
843.661.8324
<http://WWW.FDTC.EDU>
2014 Degrees Awarded: 856

Golf Academy of America-Myrtle Beach
3268 Waccamaw Blvd.
Myrtle Beach, SC 29579
800.342.7342
<http://www.golfacademy.edu>
2014 Degrees Awarded: 180

ITT Technical Institute-Myrtle Beach
9654 North King's Highway, Suite 10
Myrtle Beach, SC 29572
843.497.7820
<http://www.itt-tech.edu>
2014 Degrees Awarded: 49

Kenneth Shuler School of Cosmetology-Florence
2443 West Lucas Street
Florence, SC 29501
843.679.3778
<http://www.kennethshuler.com>
2014 Degrees Awarded: 77

Northeastern Technical College
1201 Chesterfield Hwy.
Cheraw, SC 29520
843.921.6900
<http://www.netc.edu>
2014 Degrees Awarded: 284

Virginia College-Florence
2400 David H. McLeod Blvd
Florence, SC 29501
843.407.2200
<http://www.vc.edu>
2014 Degrees Awarded: 185

Cathedral Bible College
803 Howard Avenue
Myrtle Beach, SC 29577
843.477.1503
<http://www.cathedralministries.org>
2014 Degrees Awarded: 19

Coker College
300 E College Ave
Hartsville, SC 29550
843.383.8000
<http://www.coker.edu>
2014 Degrees Awarded: 245

Francis Marion University
4822 East Palmetto Street
Florence, SC 29506
843.661.1362
<http://www.fmarion.edu>
2014 Degrees Awarded: 655

Horry-Georgetown Technical College
2050 Highway 501 East
Conway, SC 29526
843.347.3186
<http://www.hgtc.edu>
2014 Degrees Awarded: 1582

Jolei's Hair Institute
203 E. Main Street
Olanta, SC 29114
843.396.9010
<http://www.jhisoc.com>
2014 Degrees Awarded: 23

Miller-Motte Technical College-Conway
2541 Highway 501 East
Conway, SC 29526
843.591.1100
<http://www.miller-motte.edu>
2014 Degrees Awarded: 384

Strand College of Hair Design
423 79th Ave N
Myrtle Beach, SC 29572
843.467.2397
<http://www.strandcollege.com>
2014 Degrees Awarded: 22

Williamsburg Technical College
601 Martin Luther King Jr Ave
Kingstree, SC 29556
843.355.4110
<http://www.wiltech.edu>
2014 Degrees Awarded: 127

Source: Institute of Education Sciences (IES), Integrated Postsecondary Education Data System