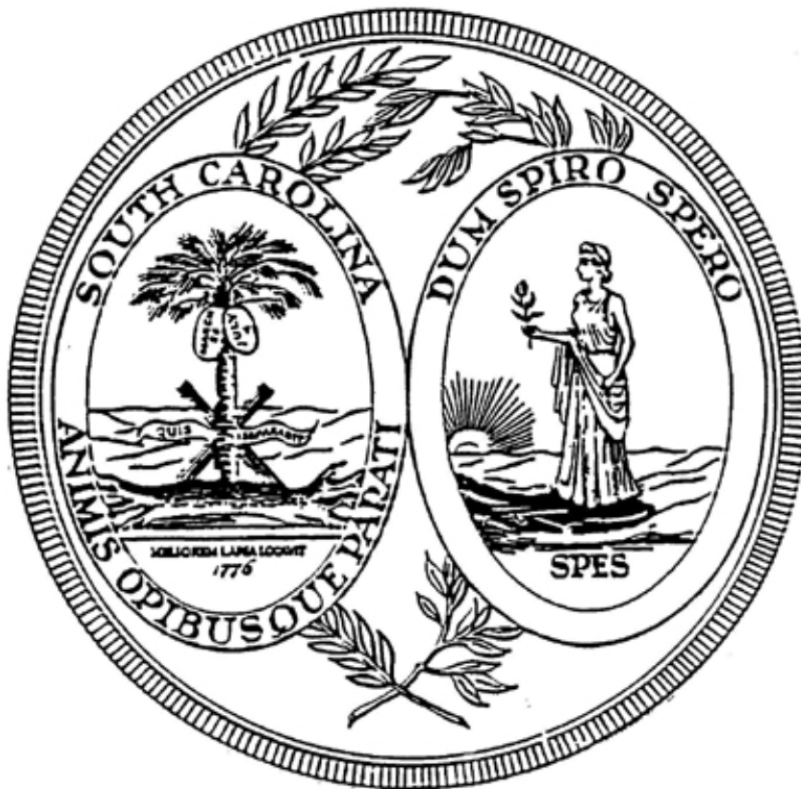


**SOUTH CAROLINA
HIGHER EDUCATION
TUITION GRANTS COMMISSION**



**ANNUAL REPORT
2009-2010**

**SOUTH CAROLINA HIGHER EDUCATION
TUITION GRANTS COMMISSION**

TO: His Excellency, Governor Marshall Clement Sanford,
Chairman, State Budget and Control Board, and the
Members of the South Carolina General Assembly

The South Carolina Higher Education Tuition Grants Commission respectfully submits for consideration its annual report. Included in this report is general data concerning the program and specific data covering the 2009-2010 award year.

Respectfully Yours,

Dr. John Griffith
2009-2010 Chairman
South Carolina Higher Education
Tuition Grants Commission

TABLE OF CONTENTS

	<u>Page</u>
South Carolina Tuition Grants - Philosophy and Purpose.....	3
Commission Members and Staff.....	4
Statutory Authority for the Commission.....	5
History of the Commission.....	5
Program Administered by the Commission.....	5
Public Service Activities and Resources.....	6
2009-2010 Statistical Summary.....	7

APPENDICES:

Appendix A:	Tuition Grants Awards for 2009-2010	9
Appendix B:	Tuition Grants Recipients by County	10
Appendix C:	Tuition Grants Recipients by Ethnic Group	11
Appendix D:	Grants Awarded by Family Income Range	12
Appendix E:	History – Awards, State Funds and Total Funds	13
Appendix F:	History – Average Grants and Average Tuition & Fees	14
Appendix G:	Analysis of Program Administrative Costs	15
Appendix H:	Total Undergraduate Full-time Students	16
Appendix I:	South Carolina Full-time Students	17
Appendix J:	College Fall Headcount Enrollments (Public & Private)	18
Appendix K:	SC Tuition Grants Commission: Organizational Chart	19

SC HIGHER EDUCATION TUITION GRANTS PHILOSOPHY AND PURPOSE

“Whereas, the General Assembly finds that as a result of the rising school population and the continuously rising cost of providing proper facilities for the higher education of young people, there exists in this State an urgent need to use all available educational resources wisely. A lack of higher education facilities is inimical to the welfare and prosperity of all residents of the State and to the continued financial growth of the State;

Whereas, the General Assembly also finds that within the State there exists several accredited independent institutions of higher learning whose facilities could be used effectively in the public interest by providing additional space for students thereby eliminating the need for substantial increases in capital outlay funds; and

Whereas, it is vital to the growth of the State that all qualified residents be offered the opportunity for furthering their education.

To achieve this in the most economical manner, students willing to bear the major cost of their education expenses should be assisted where financial need exists in an effort to make their educational goals more readily attainable.”

-- The Preamble to the Tuition Grants Law

**SOUTH CAROLINA HIGHER EDUCATION
TUITION GRANTS COMMISSION
2009-2010**

COMMISSION MEMBERS

Dr. John Griffith
Chairman
Presbyterian College
Clinton, SC

Dr. David Spittal
Secretary
Central, SC
Southern Wesleyan University

Dr. Charles Young
Vice Chairman
Allen University
Columbia, SC

Dr. Caroline Whitson
Columbia College
Columbia, SC

Dr. David Shi
Furman University
Greenville, SC

Dr. Evans Whitaker
Anderson University
Anderson, SC

Dr. Betsy Fleming
Converse College
Spartanburg, SC

Dr. Robert Wyatt
Coker College
Hartsville, SC

Dr. Garrison Walters
Commission on Higher Education
Columbia, SC

STAFF MEMBERS

Mr. Earl L. Mayo, Jr.Director

Mrs. Katherine H. Harrison.....Deputy Director

Mrs. Toni Cave.....Financial Aid Counselor

Ms. Gena Miles.....Financial Officer

STATUTORY AUTHORITY FOR THE COMMISSION

The General Assembly of the State of South Carolina, during the 1970 session, passed Act 1191 creating the Higher Education Tuition Grants Commission. This Commission was created as a State agency charged with the responsibility for overseeing the operation of the Tuition Grants Program.

HISTORY OF THE COMMISSION

In 1970, the General Assembly passed a bill that created the Higher Education Tuition Grants Commission, an agency that was charged with the responsibility of administering tuition grants to independent college students. The Governor signed the bill on May 1, 1970. The original appropriation was \$5,000. No awards were made the first year. In 1971-72, the program aided 43 students. In 1972-73, a total of 134 students received awards.

The Tuition Grants Program has assisted many needy students since its inception in 1970. Since the beginning of the program, over 340,000 awards have been made.

PROGRAM ADMINISTERED BY THE COMMISSION

The South Carolina Higher Education Tuition Grants Commission has been charged by the General Assembly with the responsibility of administering the Tuition Grants Program. This program allows South Carolina residents who attend participating independent colleges in this state to receive financial assistance from the state if they meet the eligibility requirements of the program.

All grant recipients must be full-time students, of good moral character, must demonstrate financial need, and must meet specified standards of academic merit.

Eligible students may apply their grants only toward tuition and fees at a South Carolina independent college that is non-profit and accredited by the Southern Association of Colleges and Secondary Schools or an independent bachelor's level institution chartered before 1962 whose major campus and headquarters are located within South Carolina. The amount of the grant may not exceed the student's financial need or the total of tuition and fees charged by the college. Also, the amount may not exceed the average annual state subsidy for the students who attend the four-year public colleges in the state.

In September and October of each year, the Tuition Grants Commission distributes information brochures to all South Carolina secondary schools and to eligible colleges. The guidance offices at the secondary schools and the financial aid offices at the colleges distribute these materials to students throughout the state.

2009-2010 ACADEMIC YEAR

The Commission received 31,023 complete applications for grants for the 2009-2010 award year.

The Tuition Grants Program has opened the door of educational opportunity to thousands of South Carolinians. A survey of grant recipients has indicated that, if they had not received tuition grant assistance, many of them would not have gone to college or would have enrolled in one of South Carolina's public colleges at a greater cost to the State.

PUBLIC SERVICE ACTIVITIES

During the 2009-2010 year, Commission staff members participated in five professional programs for parents and students. These financial aid information sessions were conducted throughout the State and were attended by nearly 500 participants. Additionally, during September, the staff participated in five statewide conferences held for high school guidance counselors. Over 500 high school guidance counselors and college admissions officers attended these meetings. During October, the Commission conducted its annual training session for financial aid administrators with over 45 people in attendance. The staff also conducted on-site training workshops for colleges as needed. Executive staff presented Program information at two Board meetings of the South Carolina Independent Colleges and Universities, and at the annual statewide conference of the South Carolina Association of Student Financial Aid Administrators.

On January 31, 2010, the Commission's Executive Director participated in a statewide South Carolina Educational Television (SCETV) broadcast. The January broadcast was the annual SCETV program titled *Finding Money for College*. This two-hour SCETV broadcast was a live interactive telecast focusing on financial aid for postsecondary education.

The Commission's web site (www.sctuitiongrants.com) provides students, parents, and the general public important program information, links to South Carolina's independent colleges, links to federal financial aid information, and links to necessary program documents for students and parents. Additionally, the Commission's web site provides a separate, secure section for college financial aid offices for expediting the processing of program reports. Colleges download information securely via the Internet instead of depending upon hard-copy reports or diskettes to arrive in the mail. This provides the Commission the ability to quickly disburse grant dollars to students.

RESOURCES

The State Appropriation for Tuition Grants in 2009-2010.....	\$21,721,761
State Lottery Funds.....	\$7,766,604
Childrens' Education Endowment Funds.....	\$5,038,141
Interest from Undisbursed Funds.....	\$4,567
Matching Funds through the Federal LEAP Program.....	\$338,235
Matching Funds through the Federal SLEAP Program.....	<u>\$365,991</u>

Total Grants Program Funding..... **\$35,235,299**

Total Administrative Costs for 2009-2010..... **\$308,669

* **Total administrative costs were only 0.87% of the total agency appropriation.**

2009-2010 STATISTICAL SUMMARY

1. Students at twenty-one (**21**) independent colleges in South Carolina were eligible to participate in the Tuition Grants Program during 2009-2010. These colleges enrolled a total of **30,775** full-time undergraduate students. Over 65 percent (**20,114**) were South Carolina residents.
2. Over 24 percent (**24.2%**) of the 2009-2010 total award dollars went to South Carolina residents attending the five historically black colleges that participate in the program.
3. In 2009-2010, almost forty-five percent (**44.82%**) of South Carolina Tuition Grants recipients were minority students. African-American students represented over forty-two percent (**42.08%**) of recipients. As a percentage of recipients, the South Carolina Tuition Grants Program serves more African-American students than any other state-funded program.
4. Over seventy-seven percent (**77.53%**) of SCTG recipients were dependent upon their parents/guardians for financial support. Over twenty-two percent (**22.47%**) were totally independent and relied only on their own income or that of a spouse.
5. Almost sixty-six percent (**65.78%**) of the 2009-2010 SCTG recipients had family incomes of **\$59,999 or less**. The average income for all 2009-2010 Tuition Grant recipients was \$48,609.
6. The average age for all 2009-2010 Tuition Grant recipients was **23.05 years**.
7. The 2009-2010 average private college tuition and fee charge was **\$19,055** per year, not including room, board, or books. The average South Carolina Tuition Grant award for 2009-2010 was **\$2,448** and covered **12.85%** of the average tuition and fees charge.

APPENDICES

	<u>Page</u>
Appendix A: Tuition Grants Awards for 2009-2010	9
Appendix B: Tuition Grants Recipients by County	10
Appendix C: Tuition Grants Recipients by Ethnic Group	11
Appendix D: Grants Awarded by Family Income Range	12
Appendix E: History – Awards, State Funds and Total Funds	13
Appendix F: History – Average Grants & Average Tuition & Fees	14
Appendix G: Analysis of Program Administrative Costs	15
Appendix H: Total Undergraduate Full-time Students	16
Appendix I: South Carolina Full-time Students	17
Appendix J: Fall Headcount Enrollments (Public & Private)	18
Appendix K: Tuition Grants Commission: Organizational Chart	19

APPENDIX A

SOUTH CAROLINA TUITION GRANTS COMMISSION

2009-2010 TUITION GRANTS

<u>College</u>	<u>Freshmen</u>		<u>Sophomores</u>		<u>Juniors</u>		<u>Seniors</u>		<u>Total</u>		<u>Average</u>
	<u>Number</u>	<u>Amount</u>	<u>Number</u>	<u>Amount</u>	<u>Number</u>	<u>Amount</u>	<u>Number</u>	<u>Amount</u>	<u>Number</u>	<u>Amount</u>	
Allen University	128	\$333,032	120	\$320,765	64	\$171,261	56	\$144,292	368	\$969,350	\$2,634
Anderson University	294	\$789,006	260	\$618,013	247	\$577,186	264	\$576,796	1,065	\$2,561,001	\$2,405
Benedict College	283	\$721,078	252	\$673,496	189	\$506,065	248	\$608,715	972	\$2,509,354	\$2,582
Bob Jones University	152	\$400,831	118	\$315,762	154	\$414,695	148	\$383,926	572	\$1,515,214	\$2,649
Charleston Southern	443	\$1,162,681	289	\$764,776	294	\$786,249	298	\$763,855	1,324	\$3,477,561	\$2,627
Claflin University	309	\$829,980	262	\$676,010	205	\$524,697	269	\$655,552	1,045	\$2,686,239	\$2,571
Coker College	158	\$394,236	173	\$373,245	197	\$415,067	265	\$513,338	793	\$1,695,886	\$2,139
Columbia College	166	\$444,757	135	\$350,761	129	\$327,722	157	\$376,365	587	\$1,499,605	\$2,555
Columbia International	38	\$100,885	57	\$155,904	55	\$147,875	44	\$106,181	194	\$510,845	\$2,633
Converse College	106	\$276,011	71	\$185,242	91	\$225,001	81	\$198,820	349	\$885,074	\$2,536
Erskine College	104	\$284,562	77	\$211,925	78	\$214,039	96	\$260,250	355	\$970,776	\$2,735
Furman University	159	\$398,101	146	\$397,909	136	\$364,541	109	\$291,851	550	\$1,452,402	\$2,641
Limestone College	136	\$311,425	209	\$287,605	241	\$301,377	331	\$369,753	917	\$1,270,160	\$1,385
Morris College	175	\$443,162	128	\$325,037	105	\$274,149	143	\$373,253	551	\$1,415,601	\$2,569
Newberry College	254	\$675,249	161	\$422,800	163	\$441,065	133	\$344,341	711	\$1,883,455	\$2,649
North Greenville	294	\$770,547	243	\$645,710	238	\$645,220	285	\$758,382	1,060	\$2,819,859	\$2,660
Presbyterian College	188	\$513,134	136	\$367,273	118	\$324,724	120	\$324,588	562	\$1,529,719	\$2,722
Southern Wesleyan	135	\$311,591	194	\$282,749	184	\$330,305	257	\$355,088	770	\$1,279,733	\$1,662
Spartanburg Methodist	355	\$897,925	198	\$514,906	16	\$32,455	3	\$4,205	572	\$1,449,491	\$2,534
Voorhees College	143	\$375,860	55	\$152,775	66	\$167,650	57	\$134,858	321	\$831,143	\$2,589
Wofford College	160	\$439,010	140	\$383,447	128	\$356,216	134	\$366,707	562	\$1,545,380	\$2,750
TOTAL	4,180	\$10,873,063	3,424	\$8,426,110	3,098	\$7,547,559	3,498	\$7,911,116	14,200	\$34,757,848	\$2,448

APPENDIX B

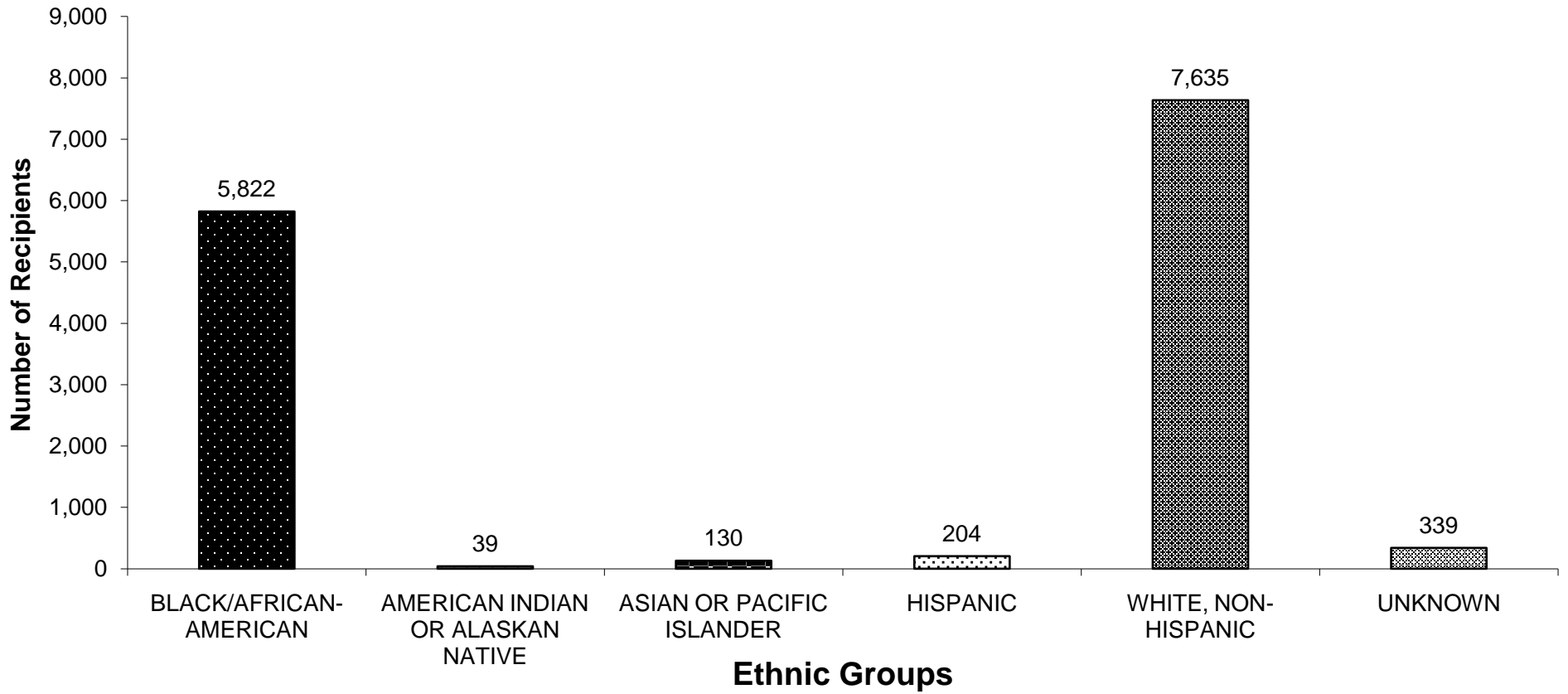
SC TUITION GRANTS RECIPIENTS BY COUNTY

2009-2010

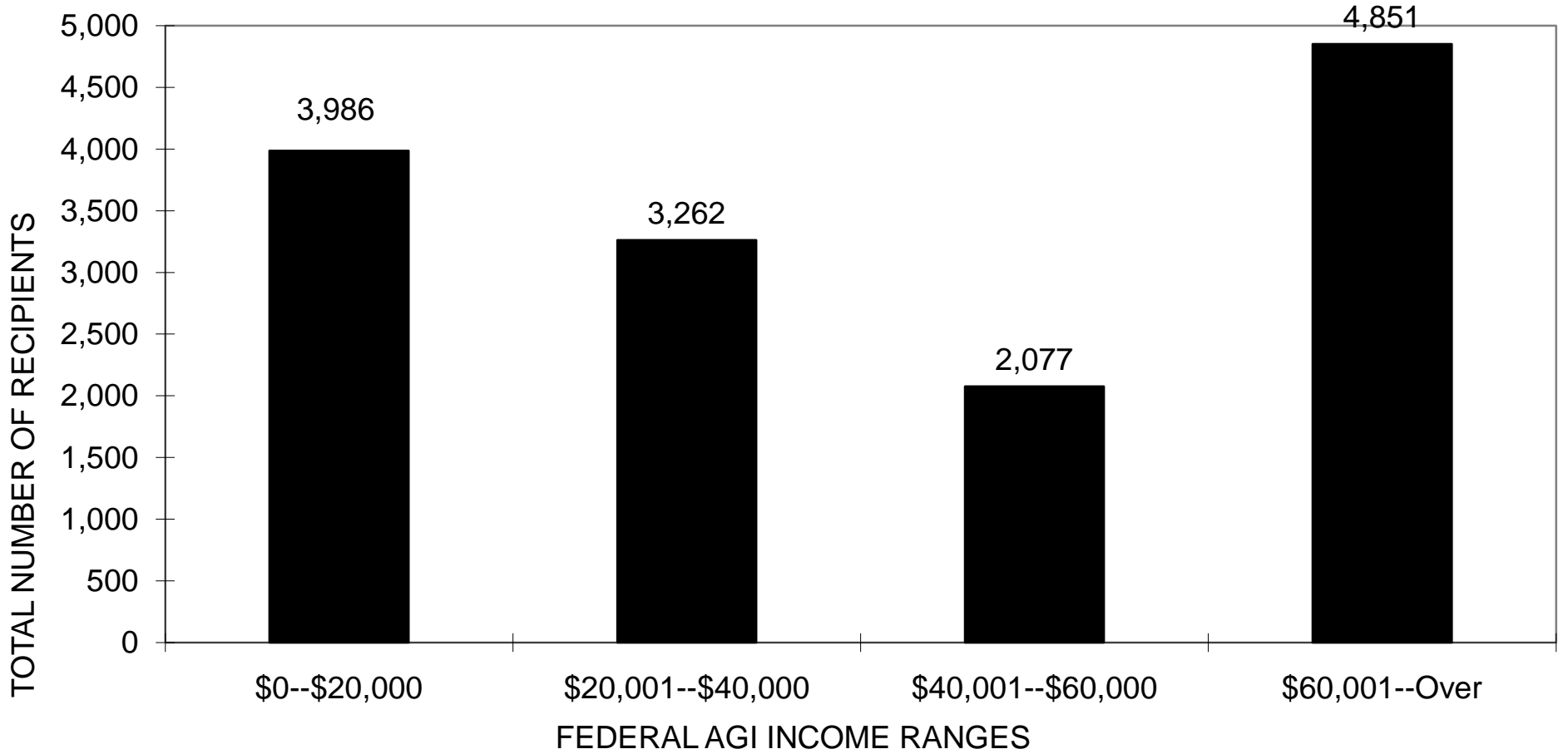
<u>COUNTY</u>	<u>RECIPIENTS</u>	<u>COUNTY</u>	<u>RECIPIENTS</u>
Abbeville	101	Greenwood	161
Aiken	321	Hampton	84
Allendale	40	Horry	246
Anderson	870	Jasper	45
Bamberg	77	Kershaw	220
Barnwell	62	Lancaster	41
Beaufort	161	Laurens	172
Berkeley	763	Lee	55
Calhoun	48	Lexington	871
Charleston	581	Marion	217
Cherokee	288	Marlboro	148
Chester	271	McCormick	20
Chesterfield	89	Newberry	141
Clarendon	137	Oconee	253
Colleton	89	Orangeburg	414
Darlington	339	Pickens	529
Dillon	121	Richland	1004
Dorchester	370	Saluda	24
Edgefield	34	Spartanburg	1019
Fairfield	270	Sumter	359
Florence	475	Union	110
Georgetown	142	Williamsburg	240
Greenville	1,796	York	339

APPENDIX C

SC TUITION GRANTS RECIPIENTS BY ETHNIC GROUP 2009-2010



APPENDIX D
SOUTH CAROLINA TUITION GRANTS BY INCOME
2009-2010



APPENDIX E

SOUTH CAROLINA TUITION GRANTS PROGRAM

AWARDS, STATE FUND AND TOTAL FUNDS HISTORY

(EXCLUDES PROGRAM ADMINISTRATIVE APPROPRIATIONS)

<u>Year</u>	<u>State Appropriation</u>	<u>Total Funds</u>	<u>Number Of Grants</u>
1971-72	\$50,000	\$50,000	43
1972-73	\$150,000	\$150,000	134
1973-74	\$4,000,000	\$4,000,000	3,271
1974-75	\$6,180,000	\$6,398,882	5,186
1975-76	\$7,255,473	\$7,460,840	5,784
1976-77	\$7,332,686	\$7,833,229	7,516
1977-78	\$8,354,749	\$9,085,707	7,758
1978-79	\$9,356,497	\$10,133,140	9,335
1979-80	\$9,907,590	\$10,788,633	7,634
1980-81	\$10,834,659	\$11,700,785	8,479
1981-82	\$12,084,659	\$12,646,350	8,368
1982-83	\$12,184,659	\$12,375,722	7,974
1983-84	\$11,929,149	\$12,577,824	6,974
1984-85	\$12,929,149	\$13,749,800	7,412
1985-86	\$14,629,149	\$15,450,804	7,635
1986-87	\$15,592,839	\$16,379,163	7,795
1987-88	\$15,541,444	\$16,372,303	7,608
1988-89	\$16,189,154	\$17,825,811	7,934
1989-90	\$17,414,241	\$18,191,460	7,242
1990-91	\$17,414,241	\$18,054,069	6,816
1991-92	\$16,790,153	\$16,823,103	6,694
1992-93	\$16,004,273	\$16,583,714	6,606
1993-94	\$15,251,517	\$16,892,826	8,371
1994-95	\$16,346,136	\$17,358,968	8,428
1995-96	\$17,564,872	\$19,034,623	8,950
1996-97	\$20,783,666	\$21,727,055	9,321
1997-98	\$22,074,929	\$22,626,641	9,412
1998-99	\$22,307,633	\$22,582,693	9,800
1999-2000	\$23,115,329	\$23,391,633	9,908
2000-2001	\$24,479,575	\$24,937,077	10,152
2001-2002	\$22,376,550	\$22,971,182	10,864
2002-2003	\$25,650,042	\$26,487,728	11,586
2003-2004	\$25,202,599	\$25,922,255	12,004
2004-2005	\$27,391,853	\$28,277,793	12,025
2005-2006	\$27,572,932	\$28,438,045	11,869
2006-2007	\$31,457,949	\$32,160,551	11,735
2007-2008	\$37,748,012	\$38,451,537	12,461
2008-2009	\$37,783,612	\$38,474,871	12,801
2009-2010	\$34,056,274	\$34,760,500	14,200
Totals	\$673,288,244	\$699,127,317	328,085

APPENDIX F

SOUTH CAROLINA TUITION GRANTS PROGRAM

AVERAGE GRANTS AND AVERAGE TUITION/FEE CHARGES

1974-75 TO 2009-2010

<u>Year</u>	<u>Private Colleges Aver. Tuition/Fee Charges</u>	<u>Average SC Tuition Grant</u>	<u>% Tuition Covered By SCTG</u>	<u>Tuition Gap (Amount Not Covered)</u>
1974-75	\$1,555	\$ 1,233.00	79%	\$322
1975-76	\$1,714	\$ 1,287.00	75%	\$427
1976-77	\$1,901	\$ 1,102.00	58%	\$799
1977-78	\$2,087	\$ 1,148.00	55%	\$939
1978-79	\$2,285	\$ 1,314.00	58%	\$971
1979-80	\$2,486	\$ 1,433.00	58%	\$1,053
1980-81	\$2,765	\$ 1,280.00	46%	\$1,485
1981-82	\$3,089	\$ 1,577.00	51%	\$1,512
1982-83	\$3,403	\$ 1,665.00	49%	\$1,738
1983-84	\$3,691	\$ 1,803.00	49%	\$1,888
1984-85	\$4,099	\$ 1,852.00	45%	\$2,247
1985-86	\$4,464	\$ 1,984.00	44%	\$2,480
1986-87	\$4,706	\$ 2,097.00	45%	\$2,609
1987-88	\$5,161	\$ 2,149.00	42%	\$3,012
1988-89	\$5,607	\$ 2,240.00	40%	\$3,367
1989-90	\$6,160	\$ 2,506.00	41%	\$3,654
1990-91	\$6,583	\$ 2,626.00	40%	\$3,957
1991-92	\$7,058	\$ 2,510.00	36%	\$4,548
1992-93	\$7,406	\$ 2,529.00	34%	\$4,877
1993-94	\$7,972	\$ 2,005.00	25%	\$5,967
1994-95	\$8,440	\$ 1,982.00	24%	\$6,458
1995-96	\$8,935	\$ 2,075.00	23%	\$6,860
1996-97	\$9,467	\$ 2,309.00	24%	\$7,158
1997-98	\$9,967	\$ 2,329.00	23%	\$7,638
1998-99	\$10,561	\$ 2,329.00	22%	\$8,232
1999-2000	\$11,093	\$ 2,317.00	21%	\$8,776
2000-2001	\$11,682	\$ 2,482.00	21%	\$9,200
2001-2002	\$12,292	\$ 2,103.00	17%	\$10,189
2002-2003	\$13,022	\$ 2,255.00	17%	\$10,767
2003-2004	\$13,888	\$ 2,150.00	15%	\$11,738
2004-2005	\$14,698	\$ 2,281.00	15%	\$12,417
2005-2006	\$15,538	\$ 2,411.00	15%	\$13,127
2006-2007	\$16,611	\$ 2,648.00	16%	\$13,963
2007-2008	\$17,281	\$ 3,000.00	17%	\$14,281
2008-2009	\$18,244	\$ 3,006.00	16%	\$15,238
2009-2010	\$19,055	\$ 2,448.00	13%	\$16,934

APPENDIX G

SOUTH CAROLINA TUITION GRANTS COMMISSION *Twenty Year Analysis of Administration Costs*

YEAR	TOTAL DOLLARS	TOTAL ADMIN DOLLARS EXPENDED	ADMIN DOLLARS AS % OF TOTAL DOLLARS	TOTAL APPS PROCESSED	ADMIN COST PER APP.	TOTAL AWARDS	ADMIN COST PER AWARD
2009-2010	\$35,235,299	\$308,669	0.87%	31,023	\$9.95	14,200	\$21.74
2008-2009	\$37,700,369	\$318,897	0.85%	28,447	\$11.21	12,801	\$24.91
2007-2008	\$38,308,382	\$359,600	0.94%	27,206	\$13.22	12,461	\$28.86
2006-2007	\$32,778,861	\$347,621	1.06%	25,747	\$13.50	11,735	\$29.62
2005-2006	\$29,072,576	\$328,791	1.14%	26,097	\$12.60	11,869	\$27.70
2004-2005	\$28,859,988	\$320,583	1.11%	25,823	\$12.41	12,025	\$26.66
2003-2004	\$26,420,914	\$334,153	1.26%	25,419	\$13.15	12,004	\$27.84
2002-2003	\$26,944,463	\$318,359	1.18%	24,872	\$12.80	11,586	\$27.48
2001-2002	\$23,336,626	\$365,444	1.57%	23,122	\$15.81	10,870	\$33.62
2000-2001	\$25,295,026	\$357,949	1.42%	20,821	\$17.19	10,152	\$35.26
1999-2000	\$23,676,565	\$321,964	1.36%	20,185	\$15.95	9,908	\$32.50
1998-1999	\$22,898,136	\$315,443	1.38%	17,896	\$17.63	9,800	\$32.19
1997-1998	\$22,939,247	\$312,606	1.36%	17,354	\$18.01	9,412	\$33.21
1996-1997	\$21,559,158	\$274,658	1.27%	16,385	\$16.76	9,321	\$29.47
1995-1996	\$18,750,903	\$289,121	1.54%	15,671	\$18.45	8,950	\$32.30
1994-1995	\$17,573,050	\$290,817	1.65%	15,430	\$18.85	8,428	\$34.51
1993-1994	\$17,141,330	\$256,240	1.49%	12,852	\$19.94	8,371	\$30.61
1992-1993	\$16,819,992	\$244,014	1.45%	13,054	\$18.69	6,606	\$36.94
1991-1992	\$17,040,282	\$217,179	1.27%	11,118	\$19.53	6,694	\$32.44
1990-1991	\$18,280,311	\$226,242	1.24%	11,075	\$20.43	6,816	\$33.19

APPENDIX H

TOTAL UNDERGRADUATE FULL-TIME STUDENTS AT THE TWENTY-ONE COLLEGES PARTICIPATING IN THE SC TUITION GRANTS PROGRAM (FALL OPENING ENROLLMENT FOR THE LAST TEN YEARS)

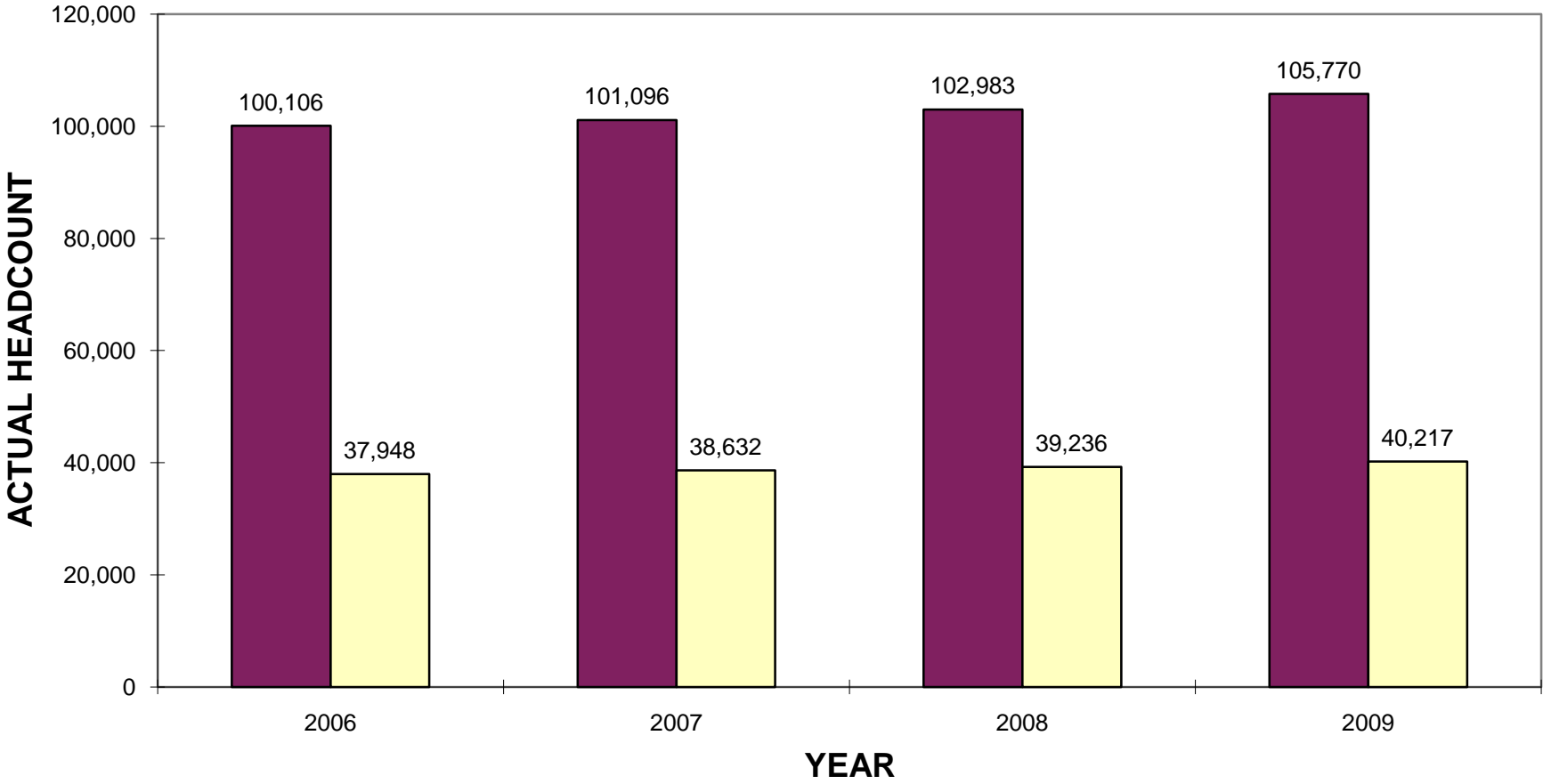
<u>COLLEGE</u>	<u>2000-01</u>	<u>2001-02</u>	<u>2002-03</u>	<u>2003-04</u>	<u>2004-05</u>	<u>2005-06</u>	<u>2006-07</u>	<u>2007-08</u>	<u>2008-09</u>	<u>2009-10</u>
Allen	350	511	573	544	647	617	517	640	703	804
Anderson	1000	1119	1224	1250	1259	1233	1178	1405	1523	1689
Benedict	2820	2837	2866	2717	2676	2491	2467	2558	2831	2934
Bob Jones								3664	3545	3195
Charleston Southern	1913	1946	2435	2075	1897	2213	2262	2395	2348	2377
Claflin	1073	1350	1464	1524	1662	1601	1600	1566	1606	1710
Coker	923	873	915	918	930	904	980	1028	956	993
Columbia	1052	1052	987	923	895	867	1121	984	961	964
Columbia International	517	551	573	564	539	496	430	429	440	504
Converse	658	631	567	595	623	622	639	631	617	594
Erskine	495	572	582	577	604	584	594	567	566	567
Furman	2629	2640	2650	2855	2682	2707	2615	2350	2614	2588
Limestone	1053	1196	1433	1588	1750	1886	2150	2047	1814	2193
Morris	919	953	1034	988	876	843	815	867	893	977
Newberry	647	671	705	716	742	821	832	900	954	1083
North Greenville	1171	1255	1417	1483	1637	1634	1690	1784	1837	1895
Presbyterian	1112	1139	1152	1144	1144	1138	1162	1128	1124	1198
Southern Wesleyan	1640	1879	1896	1819	1923	1906	1724	1714	1604	1649
Spartanburg Methodist	515	578	584	693	721	691	749	757	716	775
Voorhees	600	497	683	836	844	602	660	557	547	671
Wofford	<u>1072</u>	<u>1097</u>	<u>1069</u>	<u>1145</u>	<u>1146</u>	<u>1158</u>	<u>1228</u>	<u>1306</u>	<u>1364</u>	<u>1415</u>
TOTAL STUDENTS	22159	23347	24809	24954	25197	25014	25413	29277	29563	30775

APPENDIX I

SOUTH CAROLINA RESIDENT FULL-TIME STUDENTS AT THE TWENTY-ONE COLLEGES PARTICIPATING IN THE SC TUITION GRANTS PROGRAM (FALL OPENING ENROLLMENT FOR THE LAST TEN YEARS)

<u>COLLEGE</u>	<u>2000-01</u>	<u>2001-02</u>	<u>2002-03</u>	<u>2003-04</u>	<u>2004-05</u>	<u>2005-06</u>	<u>2006-07</u>	<u>2007-08</u>	<u>2008-09</u>	<u>2009-10</u>
Allen	207	217	286	468	322	387	394	494	555	615
Anderson	877	963	1108	1081	1090	1062	959	1187	1271	1413
Benedict	2246	2182	2184	2025	1886	1758	1618	1516	1545	1571
Bob Jones								1040	1031	963
Charleston Southern	1479	1538	1986	1688	1486	1725	1881	1925	1897	1923
Claflin	923	1156	1244	1342	1418	1374	1384	1309	1300	1367
Coker	816	773	805	818	819	771	856	896	841	861
Columbia	997	1001	924	870	829	793	812	883	863	866
Columbia International	219	222	217	184	180	179	155	168	182	259
Converse	456	455	416	424	431	429	423	455	447	437
Erskine	369	448	441	427	403	371	402	413	418	421
Furman	919	818	807	814	786	796	775	707	802	826
Limestone	814	949	1161	1330	1444	1521	1774	1606	1445	1763
Morris	793	813	1034	838	739	708	709	749	759	820
Newberry	550	574	606	598	599	637	638	703	756	877
North Greenville	975	1026	1112	1145	1275	1251	1311	1335	1164	951
Presbyterian	668	660	686	680	667	693	721	718	719	765
Southern Wesleyan	1408	1611	1629	1506	1578	1582	1437	1405	1292	1358
Spartanburg	436	508	526	631	656	637	695	705	655	725
Voorhees	403	285	453	614	632	416	448	382	402	474
Wofford	<u>735</u>	<u>735</u>	<u>698</u>	<u>755</u>	<u>740</u>	<u>741</u>	<u>764</u>	<u>786</u>	<u>805</u>	<u>859</u>
TOTAL STUDENTS	16290	16934	18323	18238	17980	17831	18156	19382	19149	20114

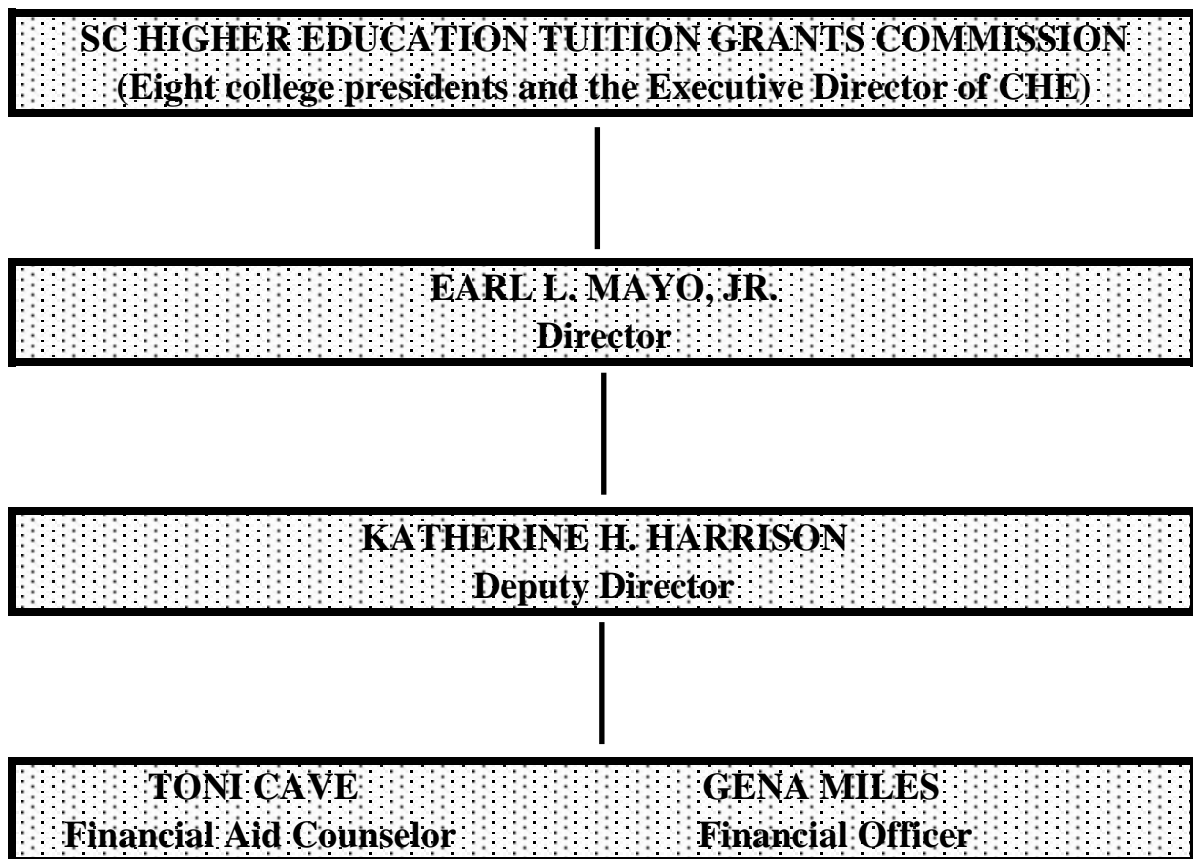
APPENDIX J
COLLEGE FALL HEADCOUNT ENROLLMENTS
PUBLIC SENIOR VS. PRIVATE SENIOR INSTITUTIONS



APPENDIX K

SOUTH CAROLINA HIGHER EDUCATION TUITION GRANTS COMMISSION

ORGANIZATIONAL CHART



Total Number of Documents Printed:	235
Cost Per Unit:	\$2.40
Total Printing Cost - SC Higher	
Education Tuition Grants Commission:	\$564.00