

P9606
1.983
Cop. 3

One Hundred and Fifth Annual Report

of the

**Public Service Commission
of South Carolina**

1982-1983

GUY BUTLER, Chairman
FRED A. FULLER, JR., Vice Chairman
RUDOLPH MITCHELL
CECIL A. BOWERS
MARJORIE AMOS-FRAZIER
CAROLINE H. MAASS
HENRY G. YONCE

}
Commissioners

JAMES H. STILL, Executive Director
ARTHUR G. FUSCO, General Counsel
A. R. GRIFFIN, Director Transportation Division
ROBERT E. McMILLAN, Asst. Director Transportation Division
CHARLES W. BALLENTINE, Director Utilities Division
W. HAROLD GOODING, Assistant Director Utilities Division

PRINTED UNDER THE DIRECTION OF THE
STATE BUDGET AND CONTROL BOARD

S. C. STATE LIBRARY

MAR 29 1984

STATE DOCUMENTS

One Hundred and Fifth Annual Report

of the

**Public Service Commission
of South Carolina**

1982-1983

GUY BUTLER, Chairman
FRED A. FULLER, JR., Vice Chairman
RUDOLPH MITCHELL
CECIL A. BOWERS
MARJORIE AMOS-FRAZIER
CAROLINE H. MAASS
HENRY G. YONCE

}
Commissioners

JAMES H. STILL, Executive Director
ARTHUR G. FUSCO, General Counsel
A. R. GRIFFIN, Director Transportation Division
ROBERT E. McMILLAN, Asst. Director Transportation Division
CHARLES W. BALLENTINE, Director Utilities Division
W. HAROLD GOODING, Assistant Director Utilities Division

**PRINTED UNDER THE DIRECTION OF THE
STATE BUDGET AND CONTROL BOARD**

LETTER OF TRANSMITTAL

OFFICE OF PUBLIC SERVICE COMMISSION

To His Excellency, Richard W. Riley, Governor of South Carolina:

Sir:

We have the honor to transmit herewith the One Hundred and Fifth Annual Report of the Public Service Commission of South Carolina for the year ending June 30, 1983.

Yours respectfully,

GUY BUTLER, Chairman
FRED A. FULLER, JR., Vice Chairman
RUDOLPH MITCHELL
MARJORIE AMOS-FRAZIER
CAROLINE H. MAASS
CECIL A. BOWERS
HENRY G. YONCE
Commissioners

JAMES H. STILL
Executive Director

**ANNUAL REPORT OF THE PUBLIC SERVICE
COMMISSION OF SOUTH CAROLINA**

To the General Assembly of South Carolina:

The Public Service Commission has the honor to respectfully submit for your consideration this its One Hundred and Fifth Annual Report.

Below is the personnel of the present Commission and the Counties comprising the districts:

First District

Marjorie Amos-Frazier Charleston, S. C.
Beaufort, Berkeley, Charleston, Colleton, Dorchester, Hampton,
Jasper

Second District

Henry G. Yonce Columbia, S. C.
Allendale, Bamberg, Barnwell, Calhoun, Lexington, Orangeburg,
Richland

Third District

Guy Butler, Chairman Greenwood, S. C.
Abbeville, Anderson, Aiken, Edgefield, Greenwood, McCormick,
Newberry, Oconee, Pickens, Saluda

Fourth District

Fred A. Fuller, Jr., Vice Chairman Greenville, S. C.
Greenville, Spartanburg

Fifth District

Cecil A. Bowers York, S. C.
Cherokee, Chester, Chesterfield, Fairfield, Kershaw, Lancaster,
Laurens, Sumter, Union, York

Sixth District

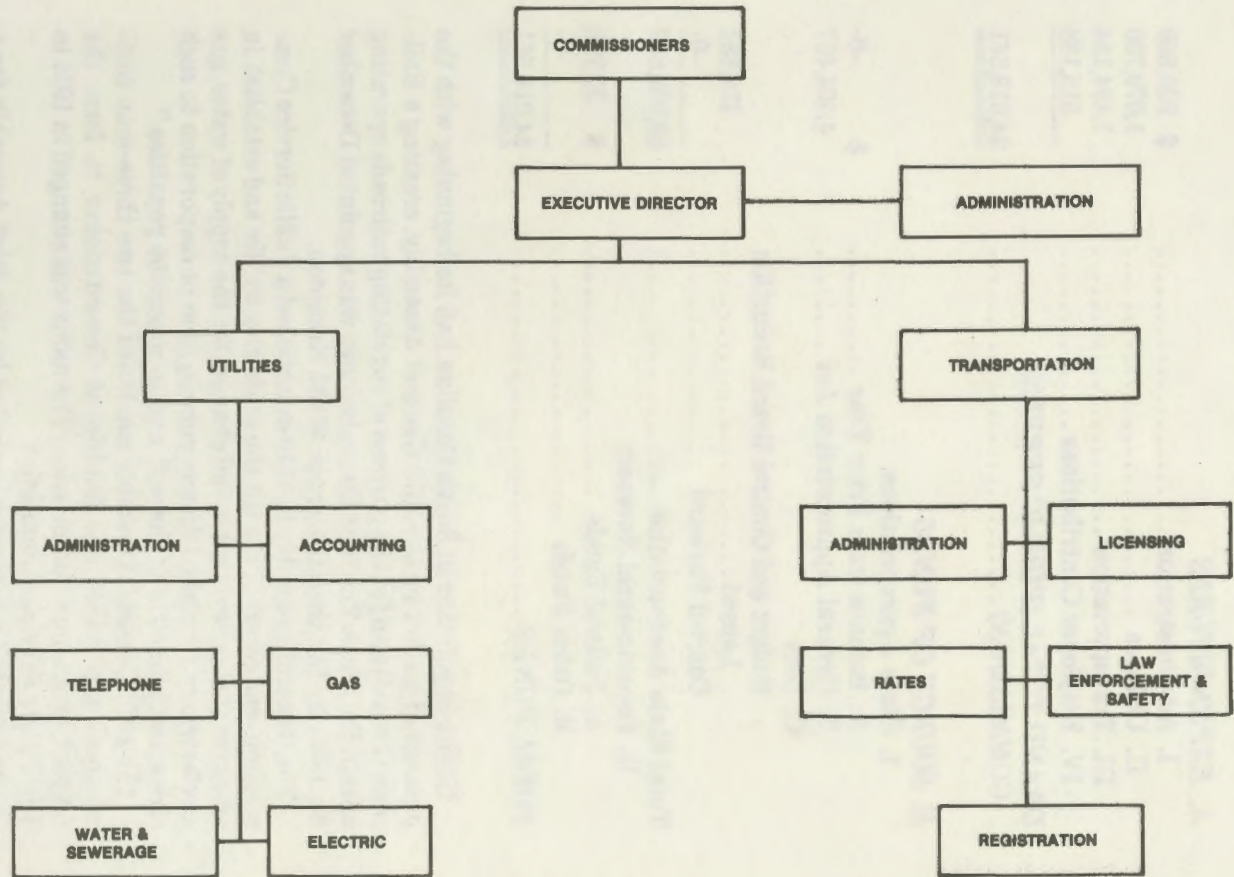
Caroline H. Maass Andrews, S. C.
Clarendon, Darlington, Dillon, Florence, Georgetown, Horry,
Marion, Marlboro, Lee, Williamsburg

At-Large

Rudolph Mitchell Saluda, S. C.
Statewide

TABLE OF CONTENTS

	PAGE
Commissioners	3
Organizational Chart	5
Summary of Expenditures	6
Introduction	6
Utilities Division:	
Administration	6
Gas Department	9
Telecommunications Department	19
Water and Wastewater Department	24
Electric Department	34
Accounting Department	50
Transportation Division:	
Administration	64
Audit Department	64
Certificate Department	68
Enforcement and Safety Department	72
Insurance Department	78
Licensing Department	79
Rails and Tariffs Department	82
Registration Department	86



SUMMARY OF EXPENDITURES

A. EXPENDITURES	
I. Administration	\$ 929,569
II. Utilities	1,079,700
III. Transportation	1,494,154
IV. Employer Contributions	515,138
GRAND TOTAL (PUBLIC SERVICE COMMISSION)	\$4,018,561
 B. SOURCE OF FUNDS	
I. State Appropriations:	
A. Balance from Prior Year	\$ -0-
B. General Appropriation Act	4,404,467
C. Less	
Budget and Control Board Reduction	
Lapsed	418,634
Carried Forward	-0-
Total State Appropriation	\$3,985,833
II. Departmental Revenue:	
A. Federal Funds	\$ 32,728
B. Other Funds	-0-
TOTAL FUNDS	\$4,018,561

Utility regulation in South Carolina had its beginning with the passage of an Act by the 1878 General Assembly, creating a Railroad Commission for the purpose of regulating railroads operating within the State. The first Commissioner was appointed December 24, 1878, by the then Governor Wade Hampton.

The General Assembly in 1910 established a Public Service Commission, empowering it with the authority to "fix and establish in all cities of this State rates and charges for the supply of water, gas or electricity furnished by any person, firm or corporation to such cities, the inhabitants thereof, and to prescribe penalties."

The 1922 General Assembly combined the two three-man commissions and added one additional Commissioner to form the present seven-man Commission. The name was changed in 1934 to The Public Service Commission.

The present Commission is elected by the Joint Assembly for a term of four years, one from each of the six Commission Districts and one Commissioner at-Large.

Authority vested in this body by Statute is to:

1. Regulate and supervise the privately-owned electric utilities as to their rates, charges, services, facilities, practices, accounting procedures, the purchase, sale or lease of utility property and the issuance of securities, as well as administer the Rural Electric Cooperative Act pertaining to territorial boundaries and also administer the Utility Facility Siting and Environmental Protection Act.

2. Approve rates and supervise services of all privately and publicly-owned telephone and telegraph companies as well as radio common carrier companies within the State.

3. Regulate rates and charges, services, facilities, practices and accounting procedures of all intrastate privately-owned gas, water and sewerage companies, and administer the Gas Safety Act enacted by the 1970 General Assembly.

4. Supervise and regulate for-hire motor carriers of persons and property as to authorities, rates, services, charges, schedules, insurance, safety, practices and facilities. Consider applications for Certificates of Public Convenience and Necessity, revoke and suspend same for cause. The Registration and Safety Act, as passed by the 1970 General Assembly, is also administered by this agency. Enforcement of the rules and regulations of the Transportation Division is carried out by uniformed Inspectors in marked patrol cars throughout the State.

During the past fiscal year, the Transportation Division dispensed license tags to 10,839 operating units varying in price from \$7.50 to \$125.00 each, according to payload. The various fees assessed produced a revenue of \$900,226.13.

As of Dec. 31, 1982, fifty-nine electric, gas, telephone, telegraph, and radio common carrier utilities were operating within the State with a total plant investment of 5.9 Billion Dollars generating gross revenues of 2.6 Billion Dollars. The 158 water and sewerage companies operating within the State generated 8.9 Million Dollars of gross revenue.

The monies appropriated for these functions are obtained as follows:

Electric, gas, telephone, telegraph, radio common carrier, water and sewerage companies are assessed on a gross revenue basis for the operation of the Administration and Utilities Divisions. The funds for the operation of the Transportation Division are deducted from the fees collected from the sale of licenses and the assessment of railroads. The remainder is deposited with the State Treasurer for distribution to the cities and towns which amounted

to \$1,018,630.70.

Revenues from the registration of trucks and the sale of identification stickers are used to defray operating expenses appropriated for the administration of the Registration and Safety Act. Any remaining funds are deposited with the State Treasurer.

From the tremendous growth of industry in the State in the past several years, coupled with the expanding economy, as evidenced by the above figures, conservative projections indicate that utility installations will more than double within the next ten years. During the past fiscal year, the Commission processed four hundred and thirty (430) applications; hearings were held thereon when necessary, and Orders issued.

GAS DEPARTMENT

There are six private corporation natural gas utilities serving customers in South Carolina. The rates and services of these utilities are subject to jurisdiction of the Public Service Commission. The natural gas utilities and the communities they serve are listed in the tables included in this report.

Natural gas brought into South Carolina is produced principally in the gas fields of Louisiana and Texas, including the offshore areas in the Gulf of Mexico. During the Fall of 1978, our State started receiving gas from Algeria. Liquefied natural gas was transported from Algeria to a regasification plant and marine terminal located on Elba Island, which is near Savannah, Georgia. However, this plant, operated by Southern Energy Company, presently is not receiving the shipments because the Algerian Government has terminated the contract for the supplies.

Gas is transported to South Carolina by two interstate pipeline companies: Transcontinental Gas Pipeline Company and Southern Natural Gas Company. Transcontinental's pipeline crosses the State in the northwest corner, passing just south of Anderson and Spartanburg, South Carolina, while Southern's pipeline enters and terminates in our State at a point near Aiken. All natural gas consumed in South Carolina is furnished by these two interstate pipelines which furnish gas to natural gas authorities and municipally owned gas utilities, as well as privately owned utilities.

The Federal Energy Regulatory Commission has jurisdiction over rates and services of interstate pipeline companies and the price of natural gas sold by producers to interstate pipelines. These price fluctuations have a direct bearing on the cost of natural gas to the ultimate consumer in South Carolina.

The Commission received a number of complaints regarding services and charges from customers of the gas utilities. One complaint required a special hearing before the Commission.

Many communities in South Carolina are receiving natural gas service through facilities owned by municipalities or gas authorities over which the Commission has no rate or service jurisdiction. However, the South Carolina Gas Safety Act of 1970 vested the Commission with pipeline safety jurisdiction over all gas system operators not subject to Federal Energy Regulatory Commission jurisdiction. Therefore, pipeline safety jurisdiction includes public utilities, municipalities, natural gas authorities, certain facilities operated by interstate companies, certain public housing authorities and others who purchase natural gas through a master

meter for subsequent distribution to individual consumers. As of June 30, 1983, there were forty-one (41) such operators.

During calendar year 1982, representatives of the Commission made 454 inspections of natural gas systems to ensure compliance with the South Carolina Gas Safety Act and the Minimum Federal Safety Standards for Natural Gas Pipelines. One-hundred six (106) violations were found during these visits and, as of December 31, 1982, the Commission Staff verified compliance covering eighty-nine (89) of these violations. The remaining violations necessitate continued monitoring to substantiate that they are corrected and brought into compliance with the Pipeline Safety Standards.

As indicated by the accompanying tables, the demand for natural gas in South Carolina has resulted in sales growth in recent years. Its characteristics as an efficient and pollution-free fuel have created a nationwide demand of such proportions that our existing domestic supply cannot meet the needs.

Agencies of the Federal Government and the State Commission have taken actions designed to increase exploration for new gas reserves within the continental United States and offshore areas. In our State, three companies have been granted Commission approval to engage in exploration activities designed to increase the supply of gas to the companies systems.

All six private gas utilities are operating under the provisions of curtailment plans designed to allocate gas on the basis of priority of service established by such factors as efficiency of use, safety considerations, consumer reliance, and alternate fuel availability.

Two factors showing the pace of activity by natural gas utilities are the average number of customers and the gross plant investment. The growth in total customers served by each privately owned gas utility is shown by one of the accompanying tables. The total of natural gas customers grew from 226,871 in 1978 to 244,044 in 1982 for an increase of 7.57% over the five years.

Six hearings for an increase in rates were held during the fiscal year covered in this report. Rates were also adjusted in accordance with approved purchased gas adjustment clauses which are designed to track changes in rates of interstate pipeline companies. Some of these rate changes were retroactive decreases which resulted in refunds being passed to the customer through billing credits.

GAS OPERATIONS IN SOUTH CAROLINA, JUNE 30, 1983

Name of Utility	Localities Served	Managing Officer	Address
PRIVATELY OWNED PUBLIC UTILITIES			
Jurisdiction — Rates & Service — Pipeline Safety			
Carolina Pipeline Company, Inc. Transmission	Gas transmission lines from near Blacksburg to the Pee Dee Section of South Carolina. Gas transmission lines serve Abbeville County and from Transcontinental's Pipeline to Carlisle and tie lines from Aiken to Chappells, Carlisle to Chappells and Carlisle to Moore and Woodruff	Max Earwood, President	Columbia, S. C.
Carolina Natural Gas Corp. Distribution	Abbeville, Bethune, Bishopville, Calhoun Falls, Camden, Conway, Cheraw, Dillon, Due West, Elgin, Jefferson, Johnsonville, Kingstree, Lake City, Lowndesville, Lugoff, Marion, Mayfield, McBee, Mullins, Myrtle Beach, Pageland, Pamplico, Pontiac, Society Hill, Zion	Max Earwood, President	Columbia, S. C.
Peoples Natural Gas Co. of S. C. Distribution	Darlington, Florence, Hartsville, Sumter	Ronald A. Steinacker, President	Florence, S. C.
Piedmont Natural Gas Co., Inc. Transmission	Gas transmission lines from connection with Transcontinental Gas Pipeline Company to City Gates of Anderson, Greenville, and Spartanburg		
Distribution	Anderson, Belton, Greenville, Honea Path, Inman, Iva, Mauldin, Simpsonville, Spartanburg, Starr, Travelers Rest, Woodruff	John H. Maxheim, President	Charlotte, N. C.

GAS OPERATIONS IN SOUTH CAROLINA, JUNE 30, 1983 — Continued

Name of Utility	Localities Served	Managing Officer	Address
South Carolina Electric & Gas Co. Transmission	Gas transmission lines from near Aiken to city gates of Charleston, Columbia and from near Montmorenci to Allendale, Barnwell, Hampton, and Beaufort Counties		
Distribution	Aiken, Allendale, Andrews, Barnwell, Batesburg, Bath, Beach Island, Beaufort, Blackville, Bowman, Brunson, Burnettetown, Burton, Cayce, Clearwater, Charleston, Columbia, Congaree, Denmark, Dentsville, Edgefield, Elko, Estil, Fairfax, Forest Acres, Gaston, Georgetown, Gloverville, Goose Creek, Graniteville, Hampton, Harleyville, Holly Hill, Irmo, Jackson, James Island, Jedburb, Johnston, Ladson, Langley, Leesville, Lexington, Lincolnville, New Ellenton, North Augusta, North Charleston, Parris Island, Perry, Pine Ridge, Port Royal, Ridge Spring, Ridgeville, South Congaree, Salley, Saluda, St. George, Springdale, Steifeltown, Summerville, Swansea, Varnville, Wagener, Walterboro, Warrenville, West Ashley, West Columbia, Williston, Yemassee	John A. Warren, President	Columbia, S. C.
United Cities Gas Company Distribution	Gaffney	Gene C. Koonce, President	Nashville, Tenn.
GAS AUTHORITIES			
Jurisdiction — Pipeline Safety			
Chester County Natural Gas Authority	Chester, Fort Lawn, Great Falls, Lando	R. E. Neal, Manager	Chester, S. C.
Clinton-Newberry Natural Gas Authority	Clinton, Lydia Mill, Joanna, Whitten Village, Jalapa, Newberry, Kinards	Bob Harris, Manager	Clinton, S. C.
Fort Hill Natural Gas Authority	Catechee, Central, Clemson, Easley, Liberty, Norris, Pelzer, Pendleton, Pickens, Seneca, Walhalla, Westminster, West Pelzer, West Union, Williamston	Howard Mixon, Manager	Easley, S. C.

GAS OPERATIONS IN SOUTH CAROLINA, JUNE 30, 1983 — Continued

Name of Utility	Localities Served	Managing Officer	Address
Lancaster County Natural Gas Authority	Lancaster, Heath Springs, Kershaw	Troy Elmore, Manager	Lancaster, S. C.
York County Natural Gas Authority	Clover, Fort Mill, Rock Hill, York	William Stephenson, Manager	Rock Hill, S. C.
MUNICIPALITIES			
Jurisdiction — Pipeline Safety			
City of Bennettsville	Bennettsville	William Shuford, Supervisor of Gas Department ...	Bennettsville, S. C.
City of Blacksburg	Blacksburg	William Owens, Administrator	Blacksburg, S. C.
City of Orangeburg	Cordova, Orangeburg	Ted M. Johnson, Manager of Public Works	Orangeburg, S. C.
		Tommy Miller, Superintendent of Gas Department .	
City of Winnsboro	Winnsboro	L. C. Greene, City Manager	Winnsboro, S. C.
City of Union	Buffalo, Jonesville, Pacolet, Union	Tom Sherbert, Director of Utilities	Union, S. C.
City of Bamberg	Bamberg & Cope Community	Bruce Ellis, Superintendent of Public Works	Bamberg, S. C.
City of Greenwood	Greenwood, Donalds, Ninety Six, Ware Shoals	Hugh Edwards, Superintendent of Gas Department	Greenwood, S. C.
City of Greer	Greer, Lyman, Duncan	Kenneth Smith, Manager of Public Works	Greer, S. C.
City of Fountain Inn	Fountain Inn	Jack Casey, Superintendent of Gas Department ...	Fountain Inn, S. C.
City of Laurens	Laurens, Gray Court	Sam Wallace, Manager of Public Works	Laurens, S. C.
		Clyde Taylor, Superintendent of Gas Department ..	
HOUSING AUTHORITIES			
Jurisdiction — Pipeline Safety			
Housing Authority of the City of Abbeville	Abbeville, Donalds, Due West, Lowndesville	J. Stuart Land, Executive Director	Abbeville, S. C.
Housing Authority of Aiken	Aiken	Ervin E. Koon, Executive Director	Aiken, S. C.
Housing Authority of Anderson	Anderson	Grady Hodges, Executive Director	Anderson, S. C.
Housing Authority of the City of Columbia	Columbia	William R. Ballou, Administrator	Columbia, S. C.

GAS OPERATIONS IN SOUTH CAROLINA, JUNE 30, 1983 — Continued

Name of Utility	Localities Served	Managing Officer	Address
Housing Authority of Conway	Conway	Howard Collier, Executive Director	Conway, S. C.
Housing Authority of Fort Mill	Fort Mill	Louise M. Starnes, Executive Director	Fort Mill, S. C.
Housing Authority of Gaffney	Gaffney	Joe H. Turner, Executive Director	Gaffney, S. C.
Housing Authority of Greenville	Greenville	John Sutton, Executive Director	Greenville, S. C.
Housing Authority of Lake City	Lake City	Ronald L. Poston, Executive Director	Lake City, S. C.
Housing Authority of Laurens	Laurens	Mr. Alan Thompson, Executive Director	Laurens, S. C.
S. C. Regional Housing Authority No. 1	Belton, Blacksburg, Calhoun Falls, Central, Clover, Cowpens, Edgefield, Fort Mill, Fountain Inn, Heath Springs, Honea Path, Iva, Johnston, Jonesville, Laurens, Liberty, Ninety Six, Pacolet, Pendleton, Saluda, Seneca, Walhalla, Westminster, William- ston, York	William Porter, Executive Director	Laurens, S. C.
S. C. Regional Housing Authority No. 3	Blackville, Denmark, Fairfax, Salley, Wagener, Williston	John M. Smith, Executive Director	Barnwell, S. C.
Housing Authority of Spartanburg	Spartanburg	Frank M. Gooch, Executive Director	Spartanburg, S. C.
Housing Authority of Woodruff	Woodruff	L. G. Casey, Executive Director	Woodruff, S. C.
Housing Authority of York	York	Edwina Burnett, Executive Director	York, S. C.
MASTER METER SYSTEMS Jurisdiction — Pipeline Safety			
Blease Littlefield Trailer Park	Rock Hill	Blease Littlefield	Rock Hill, S. C.
Smith's Trailer Park	Rock Hill	Zollie Smith, Owner	Rock Hill, S. C.
Housing Authority of Rock Hill	Rock Hill	Jim Poore, Executive Director	Rock Hill, S. C.
Housing Authority of Kingstree	Kingstree	Wilson R. Bule, Jr., Executive Director	Kingstree, S. C.

CUSTOMERS SERVED BY NATURAL GAS UTILITIES

Company	Year	Residential	Commercial and Small Industrial	Large Industrial	Sales For Resale	Total Customers
*Carolina Natural Gas Corporation	1982	12,825	2,652	50	-0-	15,527
	1981	12,161	2,587	60	-0-	14,808
	1980	11,422	2,420	50	-0-	13,892
	1979	10,822	2,311	35	-0-	13,168
	1978	12,538	672	-0-	-0-	13,210
*Carolina Pipeline Company, Inc.	1982	-0-	-0-	89	9	98
	1981	-0-	-0-	101	10	111
	1980	-0-	-0-	100	12	112
	1979	-0-	-0-	109	12	121
	1978	-0-	-0-	119	12	131
Peoples Natural Gas Company of South Carolina	1982	5,013	1,061	60	-0-	6,134
	1981	4,483	1,058	58	-0-	5,599
	1980	4,149	1,089	57	-0-	5,295
	1979	4,079	1,122	51	-0-	5,252
	1978	4,018	1,105	45	-0-	5,168
Piedmont Natural Gas Company, Inc.	1982	43,378	5,712	253	-0-	49,343
	1981	42,034	5,631	244	-0-	47,909
	1980	40,316	5,447	240	-0-	46,003
	1979	38,540	5,346	255	-0-	44,141
	1978	38,013	5,287	241	-0-	43,541
South Carolina Electric and Gas Company	1982	156,082	12,518	371	3	168,974
	1981	154,293	12,314	341	2	166,950
	1980	151,597	12,048	347	2	163,994
	1979	149,335	11,885	338	2	162,160
	1978	148,342	11,846	336	2	161,026
United Cities Gas Company	1982	3,530	417	21	-0-	3,968
	1981	3,448	418	21	-0-	3,887
	1980	3,508	396	20	-0-	3,924
	1979	3,401	395	18	-0-	3,814
	1978	3,404	371	20	-0-	3,795

*Figures based on Fiscal Year Ending March 31 of Following Year.

NATURAL GAS SERVICE TO RESIDENTIAL CUSTOMERS

Company	Year	Residential Customers	Residential Gas Sales, MCF	Average Use Per Customer, MCF
*Carolina Natural Gas Corporation	1982	12,825	1,087,407	80.8
	1981	12,161	862,515	70.9
	1980	11,422	899,900	77.9
	1979	10,822	788,078	72.8
	1978	12,538	1,209,460	96.5
Peoples Natural Gas Company of South Carolina	1982	5,013	367,836	73.4
	1981	4,483	378,952	84.5
	1980	4,149	310,601	74.8
	1979	4,079	296,493	72.7
	1978	4,018	327,039	81.4
Piedmont Natural Gas Company, Inc.	1982	49,378	3,771,941	87.0
	1981	42,034	3,890,153	92.5
	1980	40,316	3,910,477	97.0
	1979	38,540	3,588,903	93.1
	1978	38,013	3,801,614	100.1
South Carolina Electric and Gas Company	1982	156,082	8,993,694	57.6
	1981	154,298	10,028,623	64.9
	1980	151,597	9,874,355	65.1
	1979	149,935	9,655,502	64.4
	1978	148,882	10,839,971	72.8
United Cities Gas Company	1982	3,530	254,163	72.0
	1981	3,448	268,949	78.0
	1980	3,508	281,259	80.2
	1979	3,401	270,245	79.4
	1978	3,404	308,268	90.6

*Figures based on Fiscal Year Ending March 31 of Following Year.

NATURAL GAS UTILITIES ANNUAL SALES

Total Sales In DT

Company	1982	1981	1980	1979	1978
*Carolina Natural Gas Corporation	3,452,302	3,126,334	2,989,864	2,744,972	2,692,790
*Carolina Pipeline Company, Inc.	37,302,726	35,139,000	34,452,456	33,524,481	36,897,636
Peoples Natural Gas Co. of S.C.	3,230,409	3,503,229	2,804,369	2,673,481	2,088,180
Piedmont Natural Gas Company, Inc.	16,919,972	17,856,077	17,619,668	15,914,409	11,583,400
South Carolina Electric and Gas Company	39,812,253	48,179,605	48,734,281	51,045,591	48,586,086
United Cities Gas Company	1,383,222	1,538,315	1,453,374	1,564,451	896,223

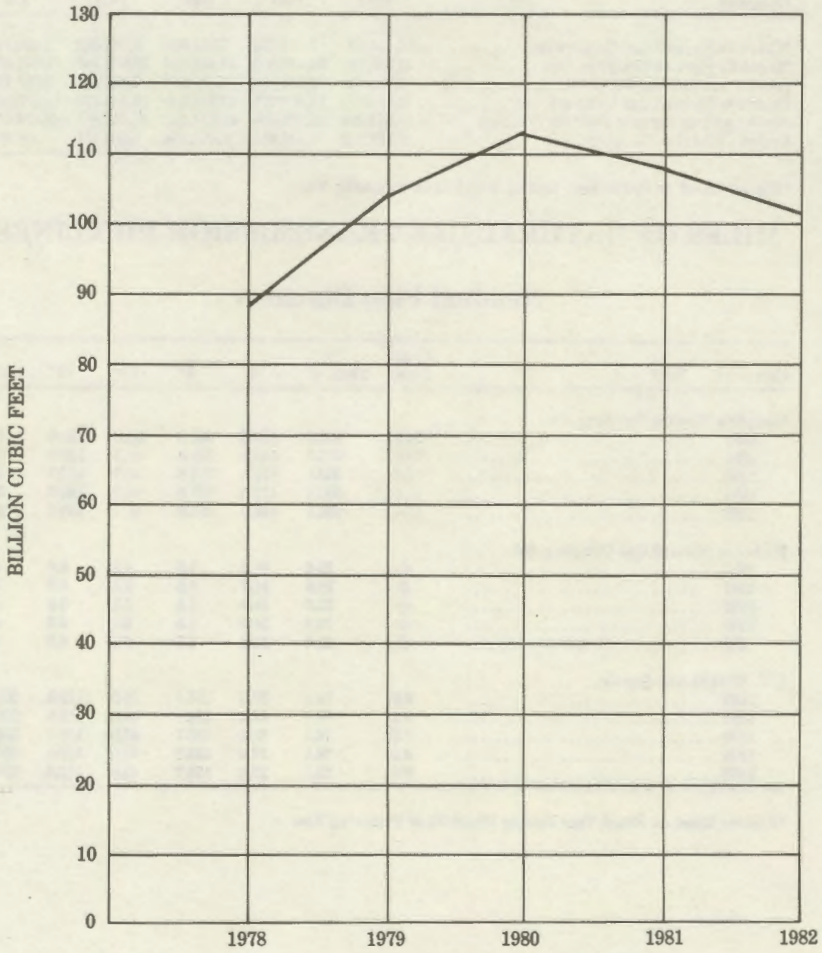
*Figures based on Fiscal Year Ending March 31 of Following Year.

MILES OF NATURAL GAS TRANSMISSION PIPELINES

Nominal Pipe Diameter

Company — Year	2" or Less	2½" Thru 4"	6"	8"	10"	12"	16"
*Carolina Pipeline Company, Inc.							
1982	74.0	240.0	168.0	301.0	114.0	131.0	6.0
1981	19.6	203.1	152.5	321.6	90.7	130.7	5.7
1980	19.6	203.1	152.5	321.6	90.7	130.7	5.7
1979	19.6	203.1	152.5	321.6	90.7	130.7	5.7
1978	18.6	203.1	152.5	321.6	90.7	130.7	5.7
Piedmont Natural Gas Company, Inc.							
1982	-0-	25.6	34.0	1.5	0.1	6.0	-0-
1981	-0-	25.6	34.0	1.5	0.1	6.0	-0-
1980	-0-	25.6	34.0	1.5	0.1	6.0	-0-
1979	-0-	25.6	34.0	1.5	0.1	6.0	-0-
1978	-0-	25.6	34.0	1.5	0.1	6.0	-0-
S. C. Electric and Gas Co.							
1982	0.2	76.1	37.4	132.7	52.0	119.8	200.1
1981	0.2	76.1	37.4	132.7	43.9	119.8	200.1
1980	0.2	76.1	37.4	132.7	43.9	119.8	200.1
1979	0.2	76.1	37.4	132.7	43.9	119.8	200.1
1978	0.2	76.1	37.4	132.7	43.9	119.8	200.1

*Figures based on Fiscal Year Ending March 31 of Following Year.



JURISDICTIONAL NATURAL GAS SALES
1978 THROUGH 1982

TELECOMMUNICATIONS DEPARTMENT

The Telecommunications Department of the Utilities Division is responsible for the work necessary in the regulation of rates and service pertaining to 30 telephone utilities, as well as 17 radio common carrier companies. The Staff of this Department investigates, and makes every effort to resolve all complaints involving rates and service, territorial disputes and requests for boundary changes.

Field inspections of telephone plants in use and under construction are made. When construction is completed, tests and other observations are made to determine the quality and adequacy of service. The Staff also maintains an updated file on all tariffs, territorial maps, and other pertinent data. The exhibits and materials submitted with rate applications are thoroughly reviewed before being introduced at a hearing.

During the fiscal year, the Telecommunications Department processed in excess of 1,000 complaints. The telephone subscribers of today expect better service without delays, failures, or inaccurate billing. Due to these and other reasons, the Staff of the Telecommunications Department perform tests in eighteen (18) central offices during the year to determine the condition of the equipment and grade of service being rendered. These tests, performed by Engineers from this Department, are made to insure that the Commission's minimum service standards are being met.

During the past year most telephone utilities continued to make large investments to improve their outside plant, central office, and toll equipment in an endeavor to cope with the ever expanding telephone industry.

The Commission held 18 formal hearings involving telephone, radio common carrier, and territory during the year and all interested parties were given an opportunity to be heard. In addition, approximately 148 tariff filings covering new service or change in language were reviewed by the Staff and approved by the Commission without formal hearings.

Divestitures and Changes

The past year also saw the beginning of the divestiture of the Bell System, as well as other significant steps toward industry deregulation. Public policy, especially at the Federal level, has resulted in a series of judgments and rulings which we believe will have a major impact on the future of modern telecommunications.

**RADIO COMMON CARRIERS IN SOUTH CAROLINA
ISSUED CERTIFICATES OF PUBLIC
CONVENIENCE AND NECESSITY**

1. ABLE ANSWERING SERVICE
(David Thomy)
Post Office Box 4567
Florence, S. C. 29503
662-7403
Post Office Box 1409
Sumter, S. C. 29150
2. ASTA, INC.
(Marshall R. Roberson)
210 North McDuffie Street
Anderson, S. C. 29621
226-8515
3. CAMDEN MOBILE
COMMUNICATIONS, INC.
(Ms. Merle Park)
1218 Henderson Street
Columbia, S. C. 29201
799-3060
Post Office Box 96
Camden, S. C. 29020
4. EAGLE COMMUNICATIONS, INC.
(Michael L. Laughlin)
118 Newberry Street
Aiken, S. C. 29801
648-3233
5. EVANS COMMUNICATIONS, INC.
(Ms. Merle Park)
1218 Henderson Street
Columbia, S. C. 29201
799-3060
(Mr. Allen L. Guin)
704-372-3444
6. GEORGIA PAGING COMPANY
(Thomas W. Miller)
Post Office Box 23328
Savannah, Georgia 31403
912-236-1396
7. MARCOM SYSTEMS, INC.
(Mr. H. A. Morris, III)
1508 West Blue Ridge
Greenville, S. C. 29611
242-4567
8. MOBILE PHONE OF
CHARLESTON
(Mr. Larry Vincent)
2045 Spalding Drive
N. Charleston, S. C. 29405
747-2337
9. MORRIS COMMUNICATIONS,
INC.
(H. A. Morris, III)
1508 West Blue Ridge
Greenville, S. C. 29611
242-4567
Post Office Box 3527
Myrtle Beach, S. C. 29577
10. NATIONAL PAGE, INC.
(Gene Phillips)
Post Office Box 16775
Greenville, S. C. 29601
239-8000
11. PARKER ELECTRONICS
(Harry L. Parker)
619 Front Street
Georgetown, S. C. 29440
546-9351
12. ROCK HILL MOBILE
COMMUNICATIONS
c/o 2 Way Radio of the Carolinas,
Inc.
(Allen L. Guin)
1932 West Morehead Street
Charlotte, N. C. 28208
704-372-3444
13. STARPAGE COMMUNICATIONS
(Gene H. Kizer)
Post Office Box 552
Irmo, S. C. 29063
781-3750
14. TELEPAGE OF BEAUFORT
(Guy P. McSweeney)
4701 Montgomery Street
Savannah, Georgia 31405
912-354-2225
15. TELEPAGE COMMUNICATIONS,
INC.
(Larry Vincent)
2045 Spaulding Drive
N. Charleston, S. C. 29406
747-2337

TELEPHONE UTILITIES OPERATING IN SOUTH CAROLINA, JUNE 30, 1982

Name of Company	Exchanges	Managing Officer/Addressee	Address
Bluffton Telephone & Appliance Co., Inc.	Bluffton, S. C.	John D. Cantrell, V. Pres.	Bluffton, S. C.
Cheesee Telephone Company	Cheesee, S. C.	Mrs. H. W. Askins, Pres.	Cheesee, S. C.
Chester Telephone Company	Chester, Great Falls, Lewisville, S. C.	J. W. McElwee, Pres.	Chester, S. C.
Continental Telephone Co. of S. C.	Bowman, Elloree, Jackson, Santee, Simpsonville, S. C.	Osborne, Pres.	Simpsonville, S. C.
Farmers Telephone Coop, Inc.	Bishopville Rural, Greeleyville, Lane, Lynchburg, Mayesville, N. Kingstree, N. Manning, N. Summerton, N. Sumter, Pinewood, Scranton, Statesburg, Turbeville, W. Andrews, S. C.		
Fort Mill Telephone Co.	Fort Mill, S. C.	Aubrey Judy, Mgr.	Kingstree, S. C.
General Telephone Co. of the SE	Abbeville, Andrews, Bishopville, Calhoun Falls, Conway, Ehrhardt, Fairfax, Georgetown, Hemingway, Hollywood, Johnsonville, Kingstree, Lake City, Lamar, Laurens, McCormick, Manning, Myrtle Beach, Ocean Drive, Olanta, Olar, Pamplico, Pawleys Island, Shawview Heights, N. Myrtle Beach, Summerton, Sumter, Surfside, Walterboro, Woodruff, Winnsboro, Yemassee, S. C.	F. S. Barnes, Pres.	Rock Hill, S. C.
Hargray Telephone Company, Inc.	Hardeville, Hilton Head Island, S. C.	John McKinney, V. Pres. & Gen. Mgr.	Sumter, S. C.
Heath Springs Telephone Co.	Heath Springs, S. C.	Tony Capici, Mgr.	Hilton Head, S. C.
Home Telephone Company, Inc.	Moncks Corner, Harleyville, Jamestown, Lebanon, Cross, S. C.	W. H. Bridges, Pres.	Heath Springs, S. C.
Horry Telephone Coop, Inc.	Aynor, Horry, Floyds, Loris, Murrells Inlet, Red Hill, Lakewood, S. C.	Robert L. Helmly, Pres.	Moncks Corner, S. C.
Lancaster Telephone Co.	Lancaster, S. C.	R. E. Jamison, Mgr.	Conway, S. C.
Lockhart Telephone Exchange	Lockhart, S. C.	Gene T. Whitlock, Opr. Mgr.	Lancaster, S. C.
McClellanville Telephone Co., Inc.	McClellanville, S. C.	W. F. Tribble, Gen. Mgr.	Lockhart, S. C.
Mid-Carolina Telephone Co.	Landrum, Campobello, S. C.	F. O. Baxter, Mgr.	McClellanville, S. C.
Norway Telephone Company, Inc.	Norway, S. C.	Archie Thomas, Pres.	Matthews, S. C.
Palmetto Rural Telephone Coop., Inc.	Colleton, Cottageville, Hendersonville, Lodge, Williams, S. C.	J. C. Williams, Mgr.	Norway, S. C.
Piedmont Rural Telephone Coop., Inc.	Enoree, Gray Court, Hickory Tavern, Laurens Rural, Waterloo, West End, S. C.	Dan Dandridge, Mgr.	Walterboro, S. C.
Pond Branch Telephone Company	Gilbert, Pelion, Pond Branch, Swanssea, Wagener, S. C.	J. S. Stoddard, Mgr.	Laurens, S. C.
		N. Everett Kneece, V. Pres. and Mgr.	Gilbert, S. C.

TELEPHONE UTILITIES OPERATING IN SOUTH CAROLINA, JUNE 30, 1982 — Continued

Name of Company	Exchanges	Managing Officer/Addressee	Address
Ridge Telephone Company	Ridge Spring, S. C.	E. P. Boatwright, Mgr.	Ridge Spring, S. C.
Ridgeway Telephone Company, Inc.	Ridgeway, S. C.	B. Y. Palmer, Mgr.	Ridgeway, S. C.
Rock Hill Telephone Company	Rock Hill, S. C.	F. S. Barnes, Pres.	Rock Hill, S. C.
Sandhill Telephone Coop., Inc.	Chesterfield, Jefferson, Pageland, Patrick, Ruby, McBee, Bethune, S. C.	John D. Maclaurin, Mgr.	Jefferson, S. C.
South Carolina Telephone Corporation	Lexington, Kershaw, Inman, S. C.	LeRoy Darling, Pres.	Lexington, S. C.
Southern Bell Tel. & Tel. Co.	Aiken, Allendale, Anderson, Bamberg, Barnwell, Bath, Belton, Bennettsville, Blue Ridge, Blacks- burg, Blackville, Blenheim, Camden, Central, Chapin, Charleston, Cheraw, Clemson College, Clinton, Clio, Clover, Columbia, Congaree, Cow- pens, Darlington, Denmark, Dillon, Easley, East- over, Edgefield, Edisto Beach, Florence, Folly Beach, Fountain Inn, Gaffney, Graniteville, Green- ville, Greer, Hartsville, Hickory Grove, Honea Path, Isle of Palms, Joanna, Johnston, Jonesville, Lake View, Lake Wylie, Latta, Leesville, Liberty, Little Mountain, Lyman, Marion, McColl, Mt. Pleas- ant, Mulline, Newberry, New Ellenton, Nichols, North Augusta, Orangeburg, Pacolet, Pelzer, Pen- dleton, Pickens, Piedmont, Prosperity, Seneca, Sharon, Six Mile, Spartanburg, Springfield-Salley, St. George, Society Hill, Sullivan's Island, Summer- ville, Timmonsville, Travelers Rest, Union, Wal- halla, Westminster, Whitmire, Williamston, York, S. C.	H. R. Marsh, V.P. and Gen. Mgr.	Columbia, S. C.
St. Matthews Telephone Co.	St. Matthews, Cameron, Creston, S. C.	R. F. Nickells, Mgr.	St. Matthews, S. C.
St. Stephen Telephone Co.	St. Stephen, Bonneau, S. C.	F. O. Baxter, Mgr.	St. Stephen, S. C.
United Telephone Company of the Carolinas, Inc.	Beaufort, Branchville, Estill, Eutawville, Hampton, Holly Hill, Laurel Bay, Ridgeland, Greenwood, Hodges, Cross Hill, Saluda, Troy, Ware Shoals, Ninety Six, Chappelle, Mountville, S. C.	L. A. Corning, V. Pres.	Bristol, Tenn.
West Carolina Rural Telephone Corp.	Due West, Iva, Plum Branch, Starr, W. Abbeville, S. C.	L. B. Thompson, Mgr.	Abbeville, S. C.
Williston Telephone Company	Williston, North, S. C.	Gene Owens, Mgr.	Williston, S. C.

GROWTH OF TELEPHONE UTILITIES IN SOUTH CAROLINA

Year	Gross Operating Revenue (Millions of Dollars)	Gross Plant Investment (Millions of Dollars)
1966	83.1	394.4**
1967	90.5	446.1**
1968	102.6	500.1**
1969	117.7	561.8**
1970	134.8	634.3**
1971	194.6	683.3**
1972	168.4*	807.1***
1973	182.9*	934.4***
1974	213.9*	1086.6***
1975	340.8	1053.2***
1976	399.5	1304.5***
1977	449.7	1451.6***
1978	492.3	1595.0***
1979	577.5	1779.6***
1980	660.2	1972.9
1981	768.8	2076.9
1982	859.1	2232.5

Includes only South Carolina portion of TOLL REVENUE.

** Includes Plant in Service, held for future use.

*** Includes Plant in Service and under construction.

WATER AND WASTEWATER DEPARTMENT

The majority of water and sewerage utilities operating in the State of South Carolina are owned and operated by municipalities and public water and sewer districts which are exempt, by state statute, from jurisdiction of the Public Service Commission. The City of Anderson is provided water service by a privately owned utility and therefore is regulated by the Public Service Commission.

Efforts to improve efficiency of each company has brought consolidation of many of the smaller companies. As of June 30, 1983, there are 223 water systems and 187 sewerage systems operating under 158 companies regulated by the South Carolina Public Service Commission.

There were eight new water or sewerage utilities granted Certificates of Public Convenience and Necessity during the fiscal year and two water or sewerage utilities that were granted certificated areas under formally organized corporations.

More stringent demands by state and federal agencies, higher operating and maintenance costs, wages and supplies caused eight water and sewerage companies, operating in this state, to apply to the Commission for authority to increase their rates and charges for water and sewerage service.

As prescribed by law and after proper advertisement, public hearings were held on each application for adjustments in water and sewerage rates and charges.

The problems of water and sewerage utilities continue to be problems of the Public Service Commission. The Public Service Commission received a substantial number of customer complaints during the fiscal year. These complaints fell into one of two categories, either service or billing; each complaint was investigated and settled informally, or if necessary, resolved through public hearings.

Prior to issuing a Certificate of Public Convenience and Necessity to a water or sewerage utility, the Commission, among other items, required a performance bond in accordance with Section 58-5-270 of the 1976 Code of Laws of South Carolina as amended, complete cost and rate data, approval of adequate design, and supply potential, plat of proposed area to be served and copy of engineering plans and specifications.

SEWERAGE UTILITIES OPERATING IN SOUTH CAROLINA AS OF JUNE 30, 1983

Name of Utility	Service Area	Managing Officer/Addressee	Address
Alpine Utilities	Woodland Hills West No. 2, Woodland Hills No. 3, Mandel Park, Bonnie Forest, Farndale, Groves S/D, Sherwood Park, S. C. Education Association	J. Donald Dial, Pres.	Columbia, S. C.
Anco Utilities, Inc.	Mellwood Subdivision	Bill Watkins	Lexington, S. C.
Archdale Utilities Corp.	Archdale Subdivision	E. Crosby Lewis, Atty.	Columbia, S. C.
Arlington Development Co.	Arlington Subdivision	Ralph L. Smith, Jr., Pres.	Lugoff, S. C.
Artistic Builders, Inc.	Whispering Pines, Bent Tree S/D	Larry Gibson, Pres.	Easley, S. C.
Augusta Fields Utility System	Augusta Fields Subdivision	G. P. Callison	Greenwood, S. C.
Clyde G. Branham, Inc./Lakewood Development	Lakewood Subdivision	Clyde G. Branham, Pres.	Lugoff, S. C.
Briarcliff Estates	Briarcliff Estates	Robert E. Staton, Atty.	Columbia, S. C.
Brookside Sewer District	Brookside Village Subdivision	Frank Nutt	Spartanburg, S. C.
Buckeye Sewer Company	Lost Creek Subdivision	Oscar Peters, Owner	Columbia, S. C.
Bush River Utilities, Inc.	Vicinity of Dutch Square, Bush River Road	Charles Parnell	Columbia, S. C.
Business Brokers of the South	Mayfield Park Subdivision	David Wallace	Lugoff, S. C.
Capital Utilities Corp.	Four Seasons Centre (Polly Field Area)	John Bowen, Esq.	Columbia, S. C.
Carolina Water Service, Inc.	Laurel Meadows, Rollingwood, Springhill, Oakcrest, Greyland Forest, Woodcastle, Glen Village II, Okatee, Charles Towne, Hollywood Hills, Green Oaks, Pocalla Village, Palmetto Apartments, Lin- colnshire, Whites Creek, Woodsen, Friarsgate, Greensprings, Meadowlake (Parcel F-1, Section A), Mandel Hall, Pocalla Heights, Belk, Oakland Plan- tation, Springlake, Teal on the Ashley, Roosevelt Gardena, Westchester Estates, Kings Grant, Pep- perhill, Meadowood, The Landings, Timbergate, Dutchwood, Harborside, Plantation Ridge, Small- wood Estates, Hidden Valley Mobile Home Park ..	Perry Owens	Northbrook, Ill.
Citizens and Southern Mortgage Co.	Clear Springs Subdivision	Henry Turner	Columbia, S. C.
Club Water Company, Inc.	Berkeley Country Club Estates	Dal H. Felkel	Florence, S. C.
Commodore Utility Corporation	River Hills Plantation	Perry Owens	Northbrook, Ill.
Commonwealth Utility Co., Inc.	Cabin Creek Subdivision	Preston H. Callison, Atty.	Columbia, S. C.
Cornwell Land Company, Inc.	Shandon Subdivision	Jack Cornwell	York, S. C.
Courtenay Utilities, Inc.	Newry & Vicinity		Newry, S. C.

SEWERAGE UTILITIES OPERATING IN SOUTH CAROLINA AS OF JUNE 30, 1983 — Continued

Name of Utility	Service Area	Managing Officer/Addressee	Address
DeBordieu Colony Club, Inc.	DeBordieu Colony Subdivision	Wallace F. Pate	Georgetown, S. C.
Development Service, Inc.	Dutchbrook, vicinity of Dutch Square	L. Arlen Cotter, Pres.	Columbia, S. C.
Dunmovin Utilities, Inc.	Dunmovin Subdivision, Island Estates	Dal H. Felkel	Florence, S. C.
Farrow Terrace Utility Company	Farrow Terrace, Greenview	M. B. Swindler, Owner	Columbia, S. C.
Folly Utilities			Charleston, S. C.
Fort Lawn Development Company	Baker Place Subdivision	Eugene W. Melton, Pres.	Fort Lawn, S. C.
Foxwood Utilities, Inc.	Foxwood Subdivision, Pleasant Hills	Michael Hill, Gen. Mgr.	Fort Mill, S. C.
Fripp Island Sewer Systems, Inc.	Fripp Island Development	Broadus Thomasson	Fripp Island, S. C.
Gatewood Treatment Plant	Gatewood Subdivision	Calhoun Mays, III	Greenwood, S. C.
General Utilities, Inc.	City, Lloydwood	W. E. Sellars, Pres.	Columbia, S. C.
Graniteville Company	Graniteville & Vicinity	Jerry Howell	Graniteville, S. C.
Greystone Utility Corporation	Riverland Development	E. Crosby Lewis, Atty.	Columbia, S. C.
Harken Utility Service, Inc.	Eastwood Acres Subdivision	John Harkin	Orangeburg, S. C.
Hartwell Properties, Inc.	Chickasaw Point Development	Roger A. Hard	Charlotte, N. C.
W. M. Harvey Investment Properties, Inc.	Oakmont Subdivision	W. M. Harvey, Pres.	Orangeburg, S. C.
Highland Forest, Inc. d/b/a Highland Forest Wastewater System	Highland Forest Subdivision	Roger Titus	Greenwood, S. C.
Hilton Head Plantation Utilities, Inc.	Point South Subdivision, Hilton Head Plantation	J. Roy Martin, III	Clover, S. C.
Island Utilities, Inc.	Area East of 41st Street, Isle of Palms	Harry Lightsey, Attorney	Columbia, S. C.
Isle of Palms Water Company	Forest Trail, Isle of Palms	Charles A. Way, Pres.	Iale of Palms, S. C.
Jackson Mills	Jackson Mills Village	Homer Elmore, V. P.	Wellford, S. C.
Kiawah Island Utilities, Inc.	Kiawah Island	Gary S. Pyles	Atlanta, Ga.
Lake Murray Utilities, Inc.	Mallard Bay Subdivision	Albert J. Dooley, Sr., Esq.	Columbia, S. C.
Lake Murray Water and Sewer Corporation	Lands End	Perry Owen	Northbrook, Ill.
Lakewood Utilities, Inc.	Vicinity of Rikard Nursing Home	Johnny T. Johnson	Columbia, S. C.
Leesburg Utilities, Inc.	Yorkshire Extension Subdivision	B. J. Harrington, Pres.	Columbia, S. C.
Litchfield Utility Company	Inlet Point, Salt Marsh Cove, Litchfield Retreat, Litchfield Golf Company	Douglas L. Hinds, Atty.	Georgetown, S. C.
Litco, Inc.	Leawood Subdivision	William J. Lawrence, V. P.	Sumter, S. C.

SEWERAGE UTILITIES OPERATING IN SOUTH CAROLINA AS OF JUNE 30, 1983 — Continued

Name of Utility	Service Area	Managing Officer/Addressee	Address
Lockhart Power Company	Monarch, Otteray Village	W. F. Tribble	Lockhart, S. C.
Locksley Hall, Inc.	Locksley Hall Subdivision	Joseph M. McClellan	Greenwood, S. C.
Long Cove Club Utilities, Inc.	Long Cove Club Development	Joseph H. Webster, III	Hilton Head, S. C.
Lost Wilderness, Inc.	Lost Wilderness Subdivision	Gene C. White, Pres.	Lavonia, Ga.
Lynwood Utility, Inc.	Lynwood Subdivision	Harold Simmons, Pres.	Charleston, S. C.
Marina Colony, Inc.	Marina Colony near Murrells Inlet	William Hagan	Johnsonville, S. C.
Martha Law Utilities, Inc.	Quail Creek Subdivision	J. T. McAlister, Pres.	Columbia, S. C.
Matthews Realty, Inc.	Matown Subdivision	J. S. Matthews	Darlington, S. C.
Mayfield Park Sewer System	Mayfield Park Subdivision	Michael M. Rothbery	Columbia, S. C.
Meadowbrook Water Works, Inc.	Meadowbrook Subdivision,	R. D. Ferguson	Spartanburg, S. C.
Midlands Utilities, Inc.	Dutch Village, Lincolnshire, Raintree Acres, Wash- ington Heights, Vanarsdale, Beliemede, Parkwood, Royal Hills, Westgate, Arborgate, Northwood Es- tates, Windy Hill, Charwood	Charlie Parnell	Lexington, S. C.
Mountain Bay Estates Utility, Co., Inc.	Mountain Bay Estates	Larry Estridge	Atlanta, Ga.
North Pines Utility Company, Inc.	Stonegate Subdivision	Perry Owen	Northbrook, Ill.
Barbara Wiley, Individual, d/b/a Northfall Acres Wastewater System	Northfall Acres Subdivision	Barbara Wiley	Greenwood, S. C.
Oak Grove Estates Utilities, Inc.	Oak Grove Estates Subdivision	S. V. Oxner, Owner	Lexington, S. C.
Old Barnwell Road Utility Company, Inc.	Land of Lakes, Southgate, Wrenwood	Albert Sturkie	Columbia, S. C.
Palmetto Utilities of Spartanburg, Inc.	Linville Hills	Fred Coats	Spartanburg, S. C.
Paris Mountain Utilities	Willows Subdivision	Thurman Bishop, Esq.	Greenwood, S. C.
Piedmont Development of Greenwood	Rivermont West	Walter Keenan	Columbia, S. C.
Pilot Corporation	Pimlico Subdivision	Alton H. Parks	Columbia, S. C.
Pimlico Corporation	Pine Forest Subdivision	Cecil A. Riley, Pres.	Columbia, S. C.
Pine Forest Utilities, Inc.	Pine Valley Estates	Leon D. Todd, Jr.	Conway, S. C.
Leon D. Todd, d/b/a Pine Valley Estates Utility	Pinedale, Ashley Creek Village, Guignard Park	Dan Trotter, Pres.	Sumter, S. C.
Pinedale Utility Company			

SEWERAGE UTILITIES OPERATING IN SOUTH CAROLINA AS OF JUNE 30, 1983 — Continued

Name of Utility	Service Area	Managing Officer/Addressee	Address
Quail Hollow Company	Quail Hollow Subdivision	William F. Austin, Atty.	Columbia, S. C.
R & R Environmental Systems, Inc.	Chambert Forest, Canterbury, The Village Subdivision, Idlewood, River Forest, Briarcreek, Valleybrook, Stonecreek, Trollingwood	David Rivers	Blacksburg, S. C.
Ribaut Insurance Agency	Cherry Hill Estates	Berry L. Johnson, Atty.	Beaufort, S. C.
Rice Corporation	Look-Up-Forest Subdivision	Max M. Rice	Travelers Rest, S. C.
Rock Springs Development Corp.	Rock Springs Development	Ralph L. Smith, Jr.	Lugoff, S. C.
Seabrook Island Utilities Corp.	Seabrook Island Development	Richard T. Collier, Pres.	Johns Island, S. C.
Shelley Enterprises	Shelley Acres Subdivision	William I. Shelley	Myrtle Beach, S. C.
S. C. Utilities, Inc.	Gem Lakes Estates	Hugo S. Sims, III	Orangeburg, S. C.
Southeastern Real Estate Factors, Inc.	Star Cliffe Estates	S. M. White	Sumter, S. C.
Southwoods Utilities	Southwoods Subdivision	Terry Dewar	Rock Hill, S. C.
Stratton Hall Wastewater, Inc.	Stratton Hall Subdivision	F. L. Woodham	Lugoff, S. C.
Swamp Fox Utilities, Inc.	Patriot Place Apts.	Charlie Dorn Smith, Jr.	Turbeville, S. C.
Tall Pines Utilities, Inc.	Tall Pines Subdivision	Charles I. Golbert, Atty.	Charleston, S. C.
Tega Cay Utilities, Inc.	Tega Cay Subdivision	Lee McClurkin, Jr., Pres.	Ft. Lawn, S. C.
Terraceway Service Company, Inc.	Candlewood Parcel A, Prescott Terrace, North 21 Terrace, North 21 Section "E", Star-Lite, Crane Creek, and Candlewood	E. D. Sauls, Pres.	Columbia, S. C.
Tranquil Utilities, Inc.	Tranquil Acres Subdivision	Chris Evans	Ladson, S. C.
Twin Lakes of Sumter, Inc.	Twin Lakes of Sumter Subdivision	Arthur L. Harper	Sumter, S. C.
Utilities, Inc. (Bagnal Bldra.)	Charles Towne Subdivision	M. R. Bagnal, Jr., Mgr.	Columbia, S. C.
Valhalla Company	Woodbranch (Formerly Valhalla S/D)	Robert R. Russell	Columbia, S. C.
Village Utilities, Inc.	Chimney Ridge	T. G. Daniel, Jr., Pres.	Spartanburg, S. C.
Water Oak Utility Company	Madera Subdivision, Westgate and Madera Apartments	Steven E. Schmidt	Hilton Head, S. C.
Wexford Plantation Utility Co.	Moss Creek Plantation	R. Arnold Ellison	Hilton Head, S. C.
Wildewood Utilities, Inc.	Wexford Plantation	C. Heath Manning, Pres.	Columbia, S. C.
Wood Forest Utility Co., Inc.	Wildewood Subdivision	Donald W. Harper, Atty.	York, S. C.
Woodlands Utilities, Inc.	Wood Forest Subdivision	J. D. Dial, Atty.	Columbia, S. C.
	Woodland Hills, Woodland Village Apartments, New South Square Apts., Seven Oaks Elementary School, St. Andrews Union 76 Service Station ...		

WATER UTILITIES OPERATING IN SOUTH CAROLINA AS OF JUNE 30, 1983

Name of Utility	Service Area	Managing Officer/Addressee	Address
A. D. Hare, d/b/a			
A. D. Hare Water Works	Huntington, Pinopolis	A. D. Hare, Owner	Pinopolis, S. C.
Augusta Fields Utility System	Augusta Fields Subdivision	H. D. Bushardt, Pres.	Greenwood, S. C.
B & B Water Works, Inc.	Clifton Community	Betty Blodgett	Clifton, S. C.
Big Rock Water Company	Big Rock Subdivision	George F. Rownes, Atty.	Greenville, S. C.
Blue Ribbon Water Corp.	Willowbrook, Country Oaks and Ridgewood Subdivisions	Bill Hooper	Rock Hill, S. C.
Bobby Joe Solesbee, d/b/a			
Bobby Joe Solesbee Utility Company	Hill Acres Subdivision	Bobby Joe Solesbee	Spartanburg, S. C.
Eugene F. Bobo Well Drilling	Rockview Heights, Centerville, Terrace Properties, Englewood, Forest Park	Eugene F. Bobo, Owner	Anderson, S. C.
Buckeye Water Company, Inc.	Lost Creek, Shadowood Cove	Oscar Peters, Owner	Columbia, S. C.
Calvin Acres Utility Co., Inc.	Calvin Acres	Homer J. Spires	West Columbia, S. C.
Carolina Water Service, Inc.	Laurel Meadows, Rollingwood, Springhill, Oakcrest, Greyland Forest, Woodcastle, Glen Village II, Green Oaks, Hollywood Hills, Meadowlake Hills, Pocalla Village, Carolina Estates, Falcon Ranches, Sycamore Acres, Westside Terrace, Oakwood, Tifton, Botany Acres, Carolina Acres, Grove Park, Plantation Place, Westchester, Arrowood, Blue Ridge Terrace, Indian Pines, Idlewood, Heather- wood, Wrenwood, Spring Lake, Teal on the Ashley, Peachtree Acres, Meadowood, The Landings, Tim- berlake, Carolina Shores, Dutchwood, Harborside, Smallwood Estates, Plantation Ridge	Perry Owens	Northbrook, Ill.
Capital Utilities Corp.	Four Seasons Centre (Folly Field Area)	John Bowen, Esq.	Columbia, S. C.
Cherry Hill Subdivision Water System	Cherry Hill Subdivision	F. L. Burnett, Jr., Pres.	Ninety Six, S. C.
Chinquapin Properites, Inc.	Subdivision No. 1	Calhoun Mays, III	Greenwood, S. C.
Clinton Cotton Mills	Clinton Cotton Mill, Lydia Mill	George H. Cornelson, V.P.	Clinton, S. C.

WATER UTILITIES OPERATING IN SOUTH CAROLINA AS OF JUNE 30, 1983 — Continued

Name of Utility	Service Area	Managing Officer/Addressee	Address
Coates Road Water System, Inc.	J. D. Coates Subdivision	Ralph Brendle	Spartanburg, S. C.
Commodore Utility Corporation	River Hills Plantation	Perry Owens	Northbrook, Ill.
Commonwealth Utility Co., Inc.	Cabin Creek Subdivision	Preston H. Callison, Atty.	Columbia, S. C.
Community Water System	Hollywood Manor	E. Harrison, III	Charleston, S. C.
Cornwell Land Company, Inc.	Shandon Subdivision	Jack Cornwell	York, S. C.
Courtenay Utilities, Inc.	Newry & Vicinity		Newry, S. C.
Crest Water Company, Inc.	Wintercrest, Rawlinson Plantation Carrowoods, Hidden Lake, Olde Farm Place	Melvin B. McKeown, Jr.	York, S. C.
DeBordieu Colony Club, Inc.	DeBordieu Colony Subdivision	Wallace F. Pate	Georgetown, S. C.
Dinkins Water Development Co.	Dinkins Development Subdivision	J. D. Dinkins	Sumter, S. C.
Duke Power Company	Anderson, Vicinity of Clemson and Pendleton, S. C.	John Lomax	Charlotte, N. C.
Dunmovin Utilities, Inc.	Dunmovin Subdivision, Island Estates	Dal H. Felkel	Florence, S. C.
E. B. Stone	E. B. Stone Acres	E. B. Stone	York, S. C.
E & R Partnership	Lake Marion Shores	Rose Marie Oliver	Manning, S. C.
Edenwood Water Company	Edenwood Subdivision	William C. Hawley	West Cola., S. C.
Fairlawn Utilities, Inc.	Fairlawn Subdivision	Peggy C. Sox	Lexington, S. C.
Fork Shoals Water Works	Fork Shoals Village	J. E. Haller	Ware Shoals, S. C.
Foxwood Utilities, Inc.	Foxwood Subdivision, Pleasant Hills	Michael Hill, Gen. Mgr.	Fort Mill, S. C.
GMK Development Corporation	Green Pond Estates	L. A. Holiday	Burton, S. C.
General Utilities	St. Davids Pl., Albene Park, Franklin Park	Preston H. Callison, Atty.	Columbia, S. C.
Gnato's Utility	Gnato's Acres Subdivision	F. H. Waden	High Point, N. C.
Graniteville Company	Graniteville and Vicinity	Jerry Howell	Graniteville, S. C.
Hallmark Shores Water System	Hallmark Shores Subdivision	Lucius O. Porth	Lexington, S. C.
Hartwell Properties, Inc.	Chickasaw Point Development	Roger A. Hard	Charlotte, N. C.

WATER UTILITIES OPERATING IN SOUTH CAROLINA AS OF JUNE 30, 1983 — Continued

Name of Utility	Service Area	Managing Officer/Addressee	Address
Heater Utilities, Inc.	Springfield Acres, Dutch Village, Lincolnshire, Farwood, Raintree Acres, Washington Heights, Charleswood Vanarsdale, Bellemede, Parkwood, Royal Hills, Ballentine Acres, Harmon Estates, South Congaree, Murray Park, Murray Lodge, Dutchman Shore, Indian Cove, Tanya Terrace, Emma Terrace, Lake Village, Melmont Shores, Dutchman Acres, Arrowhead Shores, Charwood, Lexington Estates, Oakland Plantation, Tanglewood, Foxtrail, Windy Hill, Sangaree, Pioneer Shores, Arrowood, Oakridge Hunt Club, Lakewood Estates	Dwayne McDermaid	Columbia, S. C.
Hermitage Water Systems of Lexington, Inc.	The Hermitage Subdivision, Lexington County	Robert D. Hendrix	Lexington, S. C.
Hilton Head Plantation Utilities, Inc.	Point South Subdivision, Hilton Head Plantation Utilites, Inc.	J. Roy Martin, III	Clover, S. C.
Hilton Head Utilities, Inc.	Blue Heron Point, Bram's Point, Spanish Wells, Mariner's Cove, Burke's Beach, Squiresgate, Oak Marsh	Joe Y. Pitta, Pres. G. H. O'Kelley	Hilton Head, S. C. Hilton Head, S. C.
Horse Island Service Corporation	Horse Island, Vue Point Subdivision	B. Hughes, Owner	Anderson, S. C.
Hughes Water System, Inc.	Middleton Shores, Hill & Dale, Sherwood Forest, Clearview Heights, Green Forest, Fieldcrest Acres, Beigewater, Surfside Heights, Lakewood, Town Creek Acres, Edgebrook, Haynie Builders, Lakeland, Normandy Park, Rice Enterprises, Dobbins Estates, Hidden Lake, Nevitt Forest, Oakwood	John S. Coleman, Manager	Greenwood, S. C.
Hyde Park Water Company	Hyde Park Subdivision	William Adams	Moncks Corner, S. C.
Inland Water Company	Rollingwoods Acres	Harry Lightsey, Attorney	Columbia, S. C.
Island Utilities, Inc.	Area East of 41st Street, Isle of Palms	Charles S. Way, Pres.	Isle of Palms, S. C.
Isle of Palms Water Company	Forest Trail S/D, Isle of Palms	J. D. Nicholson, Owner	Greenwood, S. C.
J. D. Nicholson Water Company	Located in the city limits of Greenwood, South Carolina	Gordon D. Kelley	Greenville, S. C.
Kelley, Inc.	Woodmont Estates		

WATER UTILITIES OPERATING IN SOUTH CAROLINA AS OF JUNE 30, 1983 — Continued

Name of Utility	Service Area	Managing Officer/Addressee	Address
Kiawah Island Utilities, Inc.	Kiawah Island	Gary S. Pyles	Atlanta, Ga.
Lake Murray Utilities, Inc.	Murray Hill Estates, Harrisburg	Willie L. Sox, Pres.	Lexington, S. C.
Lake Murray Water and Sewer Corporation	Lands End	Perry Owens	Northbrook, Ill.
Lockhart Power Company	Lockhart, Monarch Villages	W. F. Tribble, Asst. Treasurer	Lockhart, S. C.
Long Cove Club Utilities, Inc.	Long Cove Club Development	Joseph A. Webster, III	Beaufort, S. C.
Lost Wilderness, Inc.	Lost Wilderness Subdivision	Gene C. White, Pres.	Lavonia, Ga.
Marina Colony, Inc.	Marina Colony near Murrells Inlet	William Hagan	Johnsonville, S. C.
Mark Water Works, Inc.	Gray's Hill Subdivision	Ernest G. Mark, Pres.	Beaufort, S. C.
McCombs Water System	McCombs Subdivision	Herbert A. Anderson	Greenwood, S. C.
Mecklenburg Utilities, Inc.	Blackhorse Run	George S. King, Atty.	Columbia, S. C.
Mitchell Saxon Water System	Mitchell Saxon Subdivision	Mitchell Saxon	Spartanburg, S. C.
Mountain Bay Estates Utility, Co., Inc.	Mountain Bay Estates	Gary Merritt	Westminster, S. C.
R. W. Norman, d/b/a Warren Norman and Company	Riverview Subdivision	R. W. Norman	Rock Hill, S. C.
North Pines Utility Company, Inc.	Stonegate Subdivision	Perry Owens	Northbrook, Ill.
Oak Grove Estates Utilities	Oak Grove Estates	S. V. Oxner, Owner	Lexington, S. C.
Old Barnwell Road Utility Co., Inc.	Land of Lakes, Southgate, Walnut Creek	Albert E. Sturkie	Columbia, S. C.
Paris Mountain Utilities	Guignard Park, Ashley Creek, Pinedale, Guignard Park East	Dan Trotter, Pres.	Sumter, S. C.
Pinedale Utility Company	Carolina Springs Golf and Country Club, Inc.	Guy Porter	Fountain Inn, S. C.
Porter Water Co., Inc.	Trollingwood	David Rivers	Blacksburg, S. C.
R & R Environmental Systems, Inc.	River Pines	Donald W. Harper	York, S. C.
River Pines Water Systems, Inc.		Bob Hickman	Santee, S. C.
Santee Cooper Resort, Inc.			
Seabrook Island Utilities Corporation	Seabrook Island Development	Richard T. Collier, Pres.	Johns Island, S. C.

WATER UTILITIES OPERATING IN SOUTH CAROLINA AS OF JUNE 30, 1983 — Continued

Name of Utility	Service Area	Managing Officer/Addressee	Address
South Atlantic Utilities, Inc.	May River Plantation	Mr. Smith	Savannah, Ga.
Southland Utilities, Inc.	Creekwood, Cedarwood	Linda Hickman	Lexington, S. C.
Southwoods Utilities	Southwoods Subdivision	Terry Dewar	Rock Hill, S. C.
J. C. Colinger, d/b/a Springlake Estates Water System	Springlake Subdivision	J. C. Colinger, Owner	York, S. C.
Stephenson Investment Company, Inc.	Stephenson Lakes	H. P. Stephenson	Columbia, S. C.
Taylor Water Works, Inc.	Pine Forest, Pecan Grove	James Taylor, Owner	Ridgeland, S. C.
Tega Cay Utilities, Inc.	Tega Cay Subdivision	Lee McClurkin, Jr., Pres.	Ft. Lawn, S. C.
Trans Tech, Inc.	Wesleywood Subdivision	C. R. Parson	Rock Hill, S. C.
Village Utilities, Inc.	Madera Subdivision, Westgate Apartments, Madera Apartments	T. G. Daniel, Jr.	Spartanburg, S. C.
Water Oak Utility Company	Moss Creek Plantation	William A. Ruth, Atty.	Beaufort, S. C.
Water Systems, Inc.	Oak Shores, Timbergate I and II, Port Bass I and II	Jerry Arrington	Anderson, S. C.
Waterford, Inc.	Waterford Heights	Joseph Haval, Pres.	Pawley's Island, S. C.
West Side Water Company	Hilldale	Robert F. Burgess, Pres.	Sumter, S. C.
Ella Claire L. Mays, Trustee I, d/b/a Westgate Water System	Westgate Subdivision	Calhoun Mays, III	Greenwood, S. C.
Westover Water Company	Westover Subdivision	P. H. Partridge, Jr., Owner	Charleston, S. C.
Wexford Plantation Utility Co.	Wexford Plantation	R. Arnold Ellison	Hilton Head, S. C.
Wood Forest Utility Co., Inc.	Wood Forest Subdivision	Donald W. Harper, Atty.	York, S. C.
Woodlawn Water Company	Woodlawn Subdivision	W. Clayton Thompson	Greenwood, S. C.

ELECTRIC DEPARTMENT

The Electric Department, operating through the Utilities Division, is responsible for providing the Commission with data and information necessary for the regulation of all privately-owned electric utilities operating in South Carolina. This regulation of the electric utilities is designed to provide adequate service at reasonable rates to the people of South Carolina while assuring that these utilities are provided a reasonable return on the fair values of properties devoted to the public service.

The Electric Department also handles service and high bill complaints and during the fiscal year 924 formal complaints were investigated. Numerous other complaints and requests for information were received over the telephone and were handled without formal investigation.

Since its installation in 1976, the toll-free telephone line provided by the Commission has provided a means for customers over the entire State to contact their Commissioner or a member of the Commission Staff to discuss problems, complaints or to request information. During 1982 this was a valuable asset not only to provide the customer easy access, but also to provide the Commission with a consumer's view of what is happening across the State with the electric utility business.

Duke Power Company, Carolina Power and Light Company, and South Carolina Electric and Gas Company, the three major utilities serving the State are planning or building new generating plants, transmission and distribution lines so that adequate electric power will always be available for present customers and those who select to locate within this State.

South Carolina customers are receiving some power from the Clark Hill Project and the Hartwell Project through transmission lines of South Carolina Public Service Authority, Duke Power Company and South Carolina Electric & Gas Company.

The VACAR Group of the Southeastern Electric Reliability Council is a group of electric utilities operating in Virginia, North Carolina and South Carolina and include Carolina Power and Light Company, Duke Power Company, South Carolina Electric & Gas Company, South Carolina Public Service Authority, Virginia Electric & Power Company, as well as several smaller utilities. This Council was formed to increase reliability of the bulk electric power supply of the area served and is one of the national groups which makes up several area councils. These companies exchange information on planning, construction, system loads and other matters affecting the bulk power supply within the area.

The South Carolina electric consumer, after having enjoyed continually decreasing costs from 1931 to 1969, has seen increases in rates throughout the 1970s and early 1980s. The price per KWH in 1982 is about equal to that experienced in 1933. The rapidly increasing cost of money, construction, fuel and other items which go into the cost of providing electric service have dictated the need for the Commission to grant rate increases to the utilities under its regulation. These increases are designed to insure that the Companies will be able to recover the cost to serve the increasing demand. The average South Carolina residential customer paid about 5.78 cents per KWH during 1982, an 11.51% increase over 1981 and compared to the national average of 6.81 cents per KWH.

A chart has been prepared comparing the residential electric consumption and the average price paid by the South Carolina consumers with the average consumption and price paid by the average United States consumer. This chart is printed on one of the following pages.

It is believed that good planning and management have provided South Carolina with adequate electric power in the past and that the organizations which generate and sell electric service in South Carolina will continue to provide adequate power at reasonable rates for the present and future needs of this State. Evidence of this is the fact that new generating facilities are presently under construction by both privately-owned and publicly-owned utilities within the State.

In an effort to reduce the need for more capital for new construction, and to conserve the energy sources we have, all three of the major utilities in the State are presently engaged in Load Management programs to decrease peak demands on the electric systems while providing adequate quality service to the customers. These programs are providing means to slow the rate of increase in the cost of electric service to the customer.

RATES

During 1982 the 708,908 residential customers in South Carolina served by the privately-owned electric utilities paid \$492,121,528 for 8,520,049,946 kilowatt-hours of electricity. The average South Carolina residential customer used 12,019 kilowatt-hours during the year for which he paid \$694.20 an average of 5.78 cents per kilowatt-hour, as compared to the average consumer in the United States who used 8,234 kilowatt-hours for which he paid \$560.50 an average rate of 6.81 cents per kilowatt-hour during 1982.

There are 3,252 large industrial customers of the privately-owned utilities in South Carolina who purchased 14,100,716,600 KWH at an average rate of 3.78 cents per KWH, a rate below the industrial power costs of a large portion of this Nation.

Industries now located within South Carolina and those desiring to move into the State will find that electric power can be secured throughout practically the entire State at reasonable rates.

TERRITORIAL ASSIGNMENT ACT

The General Assembly passed the "Territorial Assignment Act" in 1969 and the Commission, pursuant to the Act has required all "electric suppliers" to file maps with the Commission showing rural electric lines in existence as of July 1, 1969. As of July 1, 1971, mylar maps of all counties in South Carolina had been filed with the Commission and negotiations between the "electric suppliers" was begun.

Territory in practically all of South Carolina has been agreed upon by the "electric suppliers" and Orders approving the assignment of territory have been issued by the Commission.

SITING ACT

The 1971 General Assembly passed an Act to give the Commission authority over "UTILITY FACILITY SITING AND ENVIRONMENTAL PROTECTION" effective January 1, 1972.

The three major utilities are now providing for the Commission, on an annual basis, a report containing a ten-year forecast of loads and resources including probable construction.

INSTALLED GENERATING CAPACITY IN SOUTH CAROLINA — JUNE 1983

	INSTALLED CAPACITY—KILOWATTS				
	Fossil Steam	Internal Combustion Turbine	Nuclear Steam	Hydro	Total
PRIVATELY OWNED					
Carolina Power & Light Company					
Darlington		729,987			729,987
H. E. Robinson	174,000	16,320	665,000		855,320
Total	174,000	746,307	665,000		1,585,307
Duke Power Company					
Boyd's Mill				960	960
Buzzard Roost		196,000		13,200	209,200
Cedar Creek				39,500	39,500
Dearborn				35,600	35,600
Fishing Creek				42,200	42,200
Gaston Shoals				9,140	9,140
Great Falls				24,800	24,800
Holiday's Bridge				3,500	3,500
Jocassee				610,000	610,000
Keowee				140,000	140,000
Lee	323,000	90,000			413,000
Ninety Nine Islands				19,000	19,000
Oconee			2,580,000		2,580,000
Rocky Creek				27,000	27,000
Saluda				2,400	2,400
Urquhart		15,000			15,000
Wateree				71,500	71,500
Wylie				54,000	54,000
Total Duke Power Company	323,000	301,000	2,580,000	1,092,800	4,296,800
Lockhart Power Company					
Lockhart				12,300	12,300
South Carolina Electric & Gas Company*					
Burton		34,950			34,950
Canadys	430,000	16,470			446,470
Coit		32,270			39,270
Columbia				10,600	10,600
Faber Palace		11,150			11,150
Fairfield				511,200	511,200
Hagood	94,000				94,000
Hardeeville		16,070			16,070
McMeekin	252,000				252,000
Neal Shoals				5,200	5,200
Parr Shoals	23,000	74,500		14,880	117,380
Saluda				197,500	197,500
Stevens Creek				18,880	18,880
Urquhart	250,000	35,955			285,955
Wateree	720,000				720,000
Williams	580,000	59,900			639,900
Total South Carolina Electric & Gas Company	2,354,000	288,265		758,260	3,400,525
Total Privately-Owned Utilities	2,851,000	1,385,572	3,245,000	1,863,960	9,294,932

INSTALLED GENERATING CAPACITY IN SOUTH CAROLINA — JUNE 1983 — Continued

	INSTALLED CAPACITY—KILOWATTS				
	Fossil Steam	Internal Combustion Turbine	Nuclear Steam	Hydro	Total
PUBLICLY OWNED					
Abbeville Light & Water		1,000		2,800	3,800
S. C. Public Service Authority					
Georgetown	1,080,000				1,080,000
Grainger	163,000				163,000
Hilton Head		53,000			53,000
Jefferies	446,000			133,000	579,000
Myrtle Beach		111,000			111,000
Spillway				2,000	2,000
Total S. C. Public Service Authority					
Authority	1,689,000	164,000		135,000	1,988,000
Total Publicly Owned	1,689,000	165,000		137,800	1,991,800
TOTALS	4,540,000	1,516,642	3,245,000	2,002,860	11,304,502

NOTES:

*S. C. E. & G. has a 6,000 KW portable gas-turbine driven generator available anywhere on system.
Half of Clark Hill capacity of 280,000 KW (hydro) and half of Hartwell capacity of 264,000 KW (hydro) is allocated to preference customers in South Carolina.

RESIDENTIAL ELECTRIC SERVICE PRIVATELY- OWNED ELECTRIC UTILITIES OPERATING IN SOUTH CAROLINA 1982

Company	Kilowatt Hours	No. of Customers	Revenues (\$)	Avg. Rate */KWH	KW-Hr. Per Custo- mer	Avg. Annual Bill (\$)
Carolina Power & Light Company .	1,294,068,000	103,543	74,048,431	5.722	12,498	715.15
Clinton Mills	4,398,182	594	254,320	5.782	7,404	428.15
Duke Power Co.	3,551,886,000	290,645	182,703,000	5.144	12,221	628.61
Heath Springs Light & Power Co.	7,383,764	750	347,599	4.708	9,845	463.47
Lockhart Power Co. .	42,729,000	4,328	2,279,059	5.334	9,873	526.58
South Carolina Electric & Gas Co.	3,619,585,000	309,048	232,489,119	6.423	11,712	752.28
Total	8,520,049,946	708,908	492,121,528	5.776	12,019	694.20

**SALE OF ELECTRIC POWER IN SOUTH CAROLINA
BY PRIVATELY-OWNED ELECTRIC UTILITIES
1982**

Class of Service	Kilowatt Hours Sold	No. of Customers	Revenue (\$)
Residential	8,520,049,946	708,908	492,121,528
Commercial and Small Power	6,089,724,825	107,568	316,496,338
Municipal and Street Lighting	460,119,098	3,684	22,948,685
Industrial	14,100,716,600	3,252	533,201,538
Municipal for Resale	2,176,859,000	20	78,782,514
REA Cooperatives	1,223,122,484	15	46,199,147
Total to Ultimate Customers	32,570,091,953	823,447	1,489,749,700
Other Electric Utilities Non-Associated	175,721,000	3	6,763,678
Total Electric Sales	32,745,812,953	823,450	1,496,513,378
Other Electric Revenue	4,564,786
Total	32,745,812,953	823,450	1,501,078,164

DOMESTIC SERVICE STATISTICAL COMPARISON OF MAJOR ELECTRIC UTILITY COMPANIES OPERATING IN SOUTH CAROLINA

Company — Year	Kw.-Hr.	Revenue	Customers	Average Rate Cents Per Kw.-Hr.	Average Annual Use — Kw.-Hr. Per Customer	Average Annual Revenue Per Customer
Carolina Power & Light Co.						
1932	7,503,977	\$ 458,117.80	10,204	6.105	735	\$ 44.90
1935	10,939,600	494,500.60	11,731	4.520	933	43.15
1940	26,657,500	758,002.18	18,196	2.843	1,465	41.66
1945	48,237,700	1,329,294.05	28,763	2.756	1,677	46.22
1950	126,559,100	2,955,714.87	49,809	2.344	2,541	59.34
1955	234,196,700	4,903,122.93	68,850	2.094	3,726	78.01
1960	350,927,000	6,790,603.09	69,435	1.985	5,054	97.80
1965	486,304,700	8,597,603.38	73,664	1.768	6,602	116.71
1970	840,720,400	13,642,890.57	82,366	1.623	10,207	165.64
1975	1,072,963,827	31,416,152.00	92,596	2.928	11,587	229.28
1976	1,118,047,400	37,988,225.00	91,656	3.295	11,522	400.33
1977	1,211,151,816	45,743,779.00	95,844	3.776	12,631	476.95
1978	1,241,806,715	47,954,668.00	97,180	3.862	12,778	493.49
1979	1,226,900,288	48,717,621.00	98,819	3.971	12,416	493.00
1980	1,362,446,803	53,880,674.00	100,335	4.285	13,579	581.86
1981	1,326,054,000	70,442,925.00	102,239	5.312	12,970	689.00
1982	1,294,068,000	74,048,431.00	103,543	5.722	12,498	715.15
Duke Power Company						
1932	13,514,460	756,738.60	22,376	5.599	604	33.82
1935	19,625,277	844,898.07	27,481	4.509	714	32.20
1940	46,718,561	1,479,019.03	41,771	3.166	978	30.96
1945	81,857,603	2,356,200.83	66,674	2.896	1,220	35.34
1950	267,271,888	5,952,778.21	100,973	2.226	2,648	58.95
1955	539,349,847	11,227,917.90	135,157	2.062	3,991	83.07
1960	813,239,146	16,026,582.48	155,543	1.971	5,228	103.04
1965	1,168,815,918	21,478,962.00	175,944	1.837	6,643	122.08
1970	2,023,344,799	34,946,803.00	210,073	1.727	9,632	166.36
1975	2,824,847,000	84,049,250.00	251,187	2.975	11,246	334.61
1976	2,973,011,973	95,627,346.00	255,538	3.117	11,499	369.88
1977	3,238,529,338	108,620,140.00	263,320	3.354	12,276	411.74
1978	3,362,377,947	120,089,777.00	267,637	3.571	12,653	448.62
1979	3,304,227,000	130,744,000.00	274,033	3.957	12,058	477.11
1980	3,577,197,000	144,639,000.00	280,843	4.043	12,737	515.02
1981	3,611,197,000	156,521,000.00	286,910	4.334	12,586	545.54
1982	3,551,886,000	182,703,000.00	290,645	5.144	12,221	628.61
S. C. Electric & Gas Co.						
1932	6,458,056	405,256.12	11,821	6.275	570	35.80
1935	9,198,808	447,109.20	12,624	4.862	729	35.42
1940	20,296,986	729,725.95	19,007	3.595	1,068	38.39
1945	34,698,968	1,049,036.75	25,481	3.023	1,362	41.17
1950	238,937,234	6,200,949.96	97,699	2.595	2,446	63.47
1955	519,258,250	12,457,586.00	138,337	2.399	2,754	90.05
1960	850,217,186	18,394,089.73	161,482	2.164	5,265	113.91
1965	1,281,895,086	25,858,455.05	188,343	2.017	6,806	137.29
1970	2,250,612,558	42,866,987.00	228,417	1.904	9,853	187.67
1975	2,893,003,110	106,388,964.00	263,711	3.676	10,970	403.24
1976	3,057,045,173	111,059,716.00	270,235	3.631	11,320	410.20
1977	3,357,119,335	135,853,698.00	276,398	4.047	12,146	491.55
1978	3,481,128,857	150,998,796.00	283,732	4.338	12,269	532.23
1979	3,379,731,419	158,102,640.00	290,684	4.678	11,627	543.90
1980	3,743,532,358	187,748,480.00	297,580	5.015	12,580	630.92
1981	3,705,039,000	221,066,564.00	304,124	5.967	12,182	726.89
1982	3,619,585,000	232,489,119.00	309,048	6.423	11,712	752.28
South Carolina Power Co*						
1932	9,620,311	621,449.38	14,741	6.460	653	42.16
1935	14,974,732	678,156.78	16,482	4.529	909	41.15
1940	38,604,381	1,163,738.56	25,007	3.015	1,544	46.54
1945	80,091,232	2,117,962.35	36,658	2.640	2,185	57.78

* NOTE: South Carolina Power Co. was absorbed by South Carolina Electric & Gas Company as of March 31, 1950.

**SOUTH CAROLINA PUBLIC SERVICE COMMISSION ELECTRIC DEPT.
RESIDENTIAL ELECTRIC BILL COMPARISON PRIVATELY OWNED POWER COMPANIES AS
OF JUNE 30, 1983**

KWH/MONTH	Carolina Power & Light Co.		Clinton Mills	Duke Power Company		Heath Springs L&P Co.	S. C. Electric & Gas Co.		Lockhart Power Co.
	Res. 45* 4-31-83	Res. 45**	Res. 3-1-81	R 6-1-83	R/WH	Res. 3-25-71	8+ 2-1-83	8+ +	R 8-18-82
Minimum	6.15	6.15	2.80	5.05	5.05	1.00	7.10	7.10	5.00
100	12.16	12.16	7.52	10.19	9.61	6.87	13.46	13.46	9.21
250	21.17	21.17	14.60	17.90	16.45	15.06	23.00	23.00	15.54
500	36.20	36.20	26.02	30.75	27.85	21.42	38.90	38.90	26.08
750	51.22	51.22	37.34	43.59	39.24	32.13	54.80	54.80	36.62
1000	66.24	64.34	48.66	56.44	50.64	42.83	71.89	69.42	47.16
1500	96.29	89.64	70.26	84.89	79.09	64.25	106.67	98.01	70.30
2000	126.33	114.94	87.56	113.33	107.53	85.66	141.44	126.61	93.44
3000	186.42	165.54	122.15	170.22	164.42	123.49	210.99	183.80	139.72
4000	246.51	216.14	156.75	227.11	221.31	171.32	280.54	240.99	186.00
5000	306.60	266.74	191.34	284.01	278.21	214.15	350.09	298.18	232.28

* Billing Months of July - October.

** Billing Months of November - June.

+ Billing Months of June - September.

+ + Billing Months of October - May.

ELECTRIC GENERATION ACCOUNT OF PRIVATELY- OWNED ELECTRIC UTILITIES OPERATING IN SOUTH CAROLINA 1982

	Kilowatt Hours
Fossil Steam Generation	12,782,268,000
IC Turbine Generation	25,279,000
Nuclear Steam Generation	12,958,613,000
Hydro Generation	1,620,806,956
Total Generation	27,386,961,956
Total Purchased	188,390,270
Net Total Generation and Purchased	27,525,352,226

SALE TO MUNICIPALITIES FOR RESALE 1982

Municipality	Company	Kilowatt Hours	Revenue (\$)	Avg. Rate Cents Per KWH
Abbeville	Duke Power Company	30,688,000	1,054,815	3.44
Bennettsville	Carolina Power & Light	75,912,000	3,126,534	4.12
Camden	Carolina Power & Light	126,208,000	5,240,377	4.15
Clemson	Duke Power Company	75,203,000	2,622,872	3.49
Clinton	Duke Power Company	87,327,000	3,249,031	3.72
Due West	Duke Power Company	8,782,000	325,616	3.71
Easley	Duke Power Company	144,480,000	5,143,488	3.56
Gaffney	Duke Power Company	119,898,000	4,118,737	3.44
Greenwood	Duke Power Company	165,655,000	5,898,866	3.56
Greer	Duke Power Company	109,273,000	3,735,829	3.42
Laurens	Duke Power Company	68,446,000	2,430,852	3.55
McCormick	S. C. Electric & Gas Co.	14,918,000	585,528	3.92
Newberry	Duke Power Company	108,822,000	3,963,419	3.64
Orangeburg	S. C. Electric & Gas Co.	477,936,000	17,271,067	3.61
Prosperity	Duke Power Company	5,744,000	209,820	3.65
Rock Hill	Duke Power Company	316,518,000	11,154,598	3.52
Seneca	Duke Power Company	84,122,000	3,035,537	3.61
Union	Lockhart Power Company	92,218,000	3,191,797	3.46
Westminster	Duke Power Company	21,741,000	805,010	3.70
Winnsboro	S. C. Electric & Gas Co.	42,473,000	1,618,721	3.81
Total		2,176,359,000	78,782,514	3.62

ORGANIZATIONS FURNISHING RETAIL ELECTRIC SERVICE IN URBAN AND RURAL AREAS OF SOUTH CAROLINA AS OF JUNE 30, 1983

Privately Owned Utilities

Privately Owned Electric Companies	Managing Officer	Address
Carolina Power & Light Co.	Sherwood Smith, Pres.	Raleigh, N. C.
Clinton Mills	R. M. Vance, Pres.	Clinton, S. C.
Duke Power Co.	Douglas W. Booth, Pres.	Charlotte, N. C.
Heath Springs Light & Power Co.	W. H. Bridges, Pres.	Heath Springs, S. C.
Lockhart Power Co.	L. S. Anderson, Mgr.	Lockhart, S. C.
S. C. Elec. & Gas Co.	John Warren, Pres.	Columbia, S. C.

Rural Electric Cooperatives

Publicly Owned (Federally Financed) Electric System	Managing Officer	Address
Aiken Elec. Co-op., Inc.	Hammie L. Chaplin, Mgr.	Aiken, S. C.
Berkeley Elec. Co-op., Inc.	E. E. Strickland, Mgr.	Moncks Corner, S. C.
Black River Elec. Co-op., Inc.	C. H. Leaird, Mgr.	Sumter, S. C.
Blue Ridge Elec. Co-op., Inc.	Charles Dalton, Mgr.	Pickens, S. C.
Broad River Elec. Co-op., Inc.	Robert C. Carroll, Mgr.	Gaffney, S. C.
Central Elec. Power Co-op., Inc.*	P. T. Allen, Mgr.	Columbia, S. C.
Coastal Elec. Co-op., Inc.	Larry Bruce, Mgr.	Walterboro, S. C.
Edisto Elec. Co-op., Inc.	Robert A. Smith, Mgr.	Bamberg, S. C.
Fairfield Elec. Co-op., Inc.	E. L. Ayers, Mgr.	Winnsboro, S. C.
Horry Elec. Co-op., Inc.	Charlie Webster, Mgr.	Conway, S. C.
Laurens Elec. Co-op., Inc.	David Wasson, Mgr.	Laurens, S. C.
Little River Elec. Co-op., Inc.	J. L. White, Mgr.	Abbeville, S. C.
Lynches River Elec. Co-op., Inc.	Lynn M. Lanier, Mgr.	Pageland, S. C.
Marlboro Elec. Co-op., Inc.	Willie L. Craig, Mgr.	Bennettsville, S. C.
Mid-Carolina Elec. Co-op., Inc.	Jack F. Wolfe, Jr., Mgr.	Lexington, S. C.
Newberry Elec. Co-op., Inc.	M. Larry Longshore, Mgr.	Newberry, S. C.
Palmetto Elec. Co-op., Inc.	George F. Carnes, Mgr.	Ridgeland, S. C.
Pee-Dee Elec. Co-op., Inc.	Robert W. Williams, Jr., Mgr.	Darlington, S. C.
Saluda River Elec. Co-op., Inc.*	Henry M. Faris, Mgr.	Laurens, S. C.
Santee Elec. Co-op., Inc.	James E. Player, Mgr.	Kingstree, S. C.
S. C. Public Service Authority	William C. Mescher, Mgr.	Moncks Corner, S. C.
Tri-County Elec. Co-op., Inc.	Robert G. Wannamaker, Mgr.	St. Matthews, S. C.
York County Elec. Co-op., Inc.	R. O. Williams, Mgr.	York, S. C.

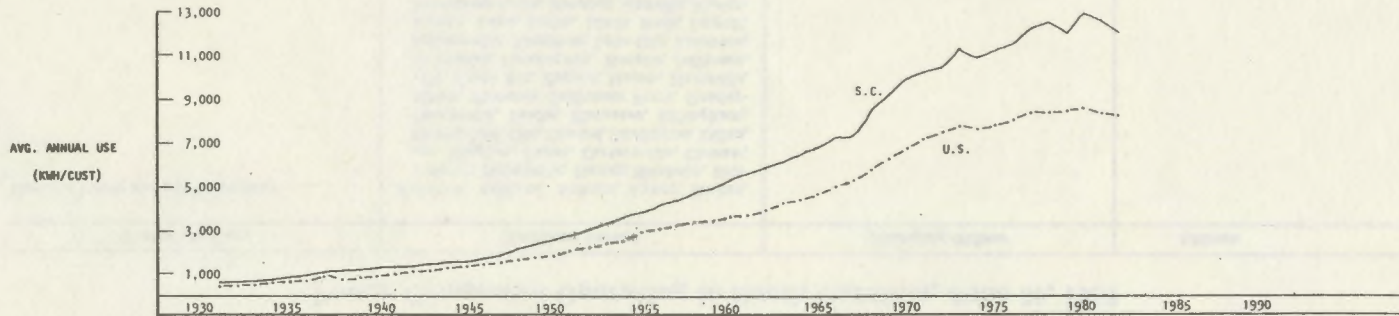
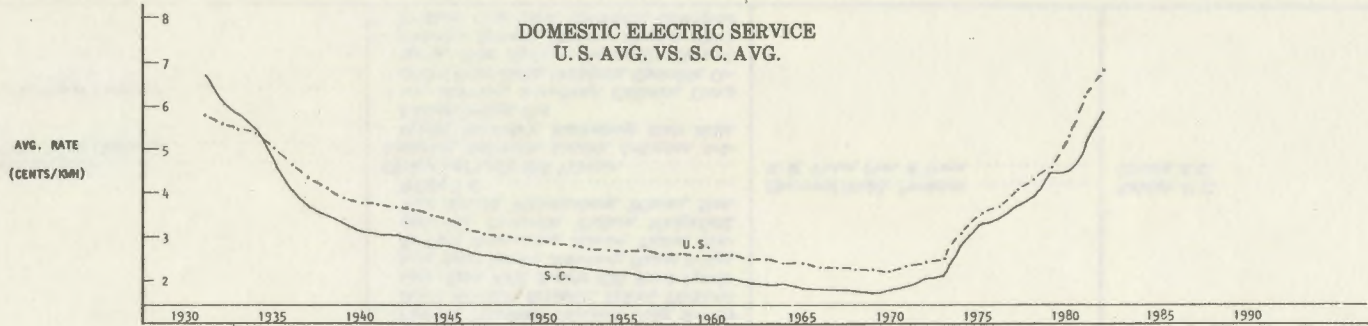
* Wholesale Electric Supplier

Municipalities

Municipally Owned Utilities	Department	Managing Office
Abbeville	Water and Electric Plant	James C. Godsey, Mgr.
Bamberg	Public Works	James B. Roberts, Dir.
Bennettsville	Electric and Water Plant	Billy Gibson, Supt.
Camden	Dept. of Utilities	Terry Williams, Supt.
Clinton	Light and Water Plant	Homer L. Martin, Supt.
Due West	Electric Light Dept.	C. H. Hawthorne, Supt.
Easley	City Light and Water Plant	Richard S. Hale, Supt.
Gaffney	Board of Public Works	H. F. Crater, Mgr.
Georgetown	Board of Public Works	W. L. Hewitt, Util. Mgr.
Greenwood	Commission of Public Works	C. E. Grubb, Mgr.
Greer	Commission of Public Works	Kenneth Smith, Mgr.
Laurens	Commission of Public Works	Sam R. Wallace
McCormick	Commission of Public Works	Eaken Cochran, Dir.
Newberry	Robert Shealy, Supt.
Orangeburg	Water and Light Plant	Ted Johnson, Mgr.
Prosperity	Commission of Public Works	Arthur Podmore, Supt.
Rock Hill	Max Holland, City Mgr.
Seneca	Light and Water Plant	Jerry Balding, Supt.
Union	Commission of Public Works	T. D. Sherbert, Jr., Dir.
Westminster	Commission of Public Works	Sam Stribling, Supt.
Winnsboro	Light and Water Dept.	John C. Shirley, Supt.

YEAR	KWH	CENTS
1931	600	6.700
32	632	6.042
33	634	5.778
34	695	5.415
35	801	4.576
36	899	4.035
37	1,011	3.731
38	1,081	3.536
39	1,145	3.270
1940	1,203	3.123
41	1,260	3.070
42	1,312	3.025
43	1,450	2.957
44	1,509	2.846
45	1,551	2.804
46	1,691	2.753
47	1,844	2.654
48	2,094	2.524
49	2,319	2.458
1950	2,547	2.387
51	2,755	2.321
52	3,002	2.343
53	3,262	2.310
54	3,571	2.254
55	3,844	2.211
56	4,181	2.165
57	4,300	2.141
58	4,696	2.097
59	4,899	2.077
1960	5,212	2.046
61	5,504	2.022
62	5,766	1.999
63	6,063	1.964
64	6,399	1.932
65	6,706	1.904
66	7,158	1.868
67	7,162	1.852
68	8,391	1.800
69	9,020	1.775
1970	9,819	1.788
71	10,070	1.947
72	10,287	2.076
73	11,214	2.154
74	10,847	2.783
75	11,178	3.266
76	11,449	3.419
77	12,249	3.713
78	12,443	3.942
79	11,901	4.263
1980	12,792	4.500
81	12,465	5.184
82	12,038	5.779

AVERAGE ANNUAL USAGE
AND
AVERAGE COST PER K.W.H.
RESIDENTIAL SERVICE
THREE LARGE PRIVATELY OWNED UTILITIES



Power Companies Operating in South Carolina, June 30, 1983

Power Company	Territory Served	Managing Officer	Address
Carolina Power and Light Company	Andrews, Ashland, Auburn, Aynor, Bethea, Bethune, Bishopville, Blaney, Blenheim, Britton, Brogdon, Cades, Cartersville, Cheraw, Chesterfield, Clio, Coward, Darlington, Dillon, Dovesville, Drake, Ebenezer, Effingham, Elliott, Florence, Gallivants Ferry, Greeleyville, Green Sea, Hagood, Hamer, Hartsville, Heineman, Hemingway, Horatio, Jefferson, Johnsonville, Kingstree, Lake City, Lakeview, Lamar, Lane, Latta, Little Rock, Lugoff, Lynchburg, Lydia, Manning, Manville, Marion, Mars Bluff, Mayesville, McBee, McColl, Motbridge, Mt. Croghan, Mullins, Nesmith, New Zion, Nichols, North Mullins, Oates, Olanta, Oswego, Pageland, Pamplico, Patrick, Paxville, Pinewood, Rembert, Ruby, Salters Depot, Sardinia, Scranton, Sellers, Shannontown, Shaw AFB, Society Hill, South Lynchburg, South Marion, Stateburg, Stokes Bridge, St. Paul, Summerton, Sumter, Tatum, Timmonsville, Turbeville, Wallace, Wedgefield, West Marion, Williamsburg, Winona, Zion, Willis, S. C.	Sherwood Smith, President	Raleigh, N. C.
Clinton Mills	Clinton and Lydia Mill Villages	R. M. Vance, Pres. & Treas.	Clinton, S. C.
Duke Power Company	Anderson, Antreville, Arcadia, Arlington, Arkwright, Barksdale, Blacksburg, Blair Mills, Bolling Springs, Bon		
Duke Power Company	Avon, Brandon, Broadway, Calhoun, Camp Sevier, Campobello, Crampton, Cashville, Catawba, Cedar Springs, Centerville, Central, Cherokee Springs, Chesnee, Chester, Chick Springs, City View, Clevedale, Cleveland		

<p>Heath Springs Light & Power Company</p>	<p>Clifton Mills, Clinton, Clover, Cokesbury, Cold Point, Concord, Conestee, Converse, Cowpens, Crescent, Cross Hill, Deans Station, Delphia, Disputanta, Donalds, Drayton, Duncan, East Gaffney, Edgemoor, Elgin, Enoree, Equinox Mills, Eureka Mills, Evansville, Fairforest, Fairmount, Filbert, Fingerville, Flat Rock, Flat Woods, Fork Shoals, Fort Lawn, Fort Mill, Fountain Inn, Gaffney, Glendale, Glenn Springs, Gluck Mill, Gowansville, Gramling, Grassy Pond, Gray Court, Gray's Gin, Great Falls, Greenville, Greer, Harris, Haynes, Hickory Grove, Hickory Tavern, Hillcrest, Hodges, Holly Springs, Honea Path, Inman, Iva, King's Creek, La France, Lancaster, Lando, Landrum, Langford Station, Laurens, Leslie, Lewis Turnout, Level Land, Liberty, Lone Oak, Lowrya, Lyman, Madden, Marietta, Mascot, Maud, Mauldin, Mayo, McConnellsville, Midway, Monaghan, Moore, Mountville, Mountain Creek, Mt. Gallagher, New Prospect, Newry, Ninety-Six, Norris, Ora, Orrville, Owings, Pacolet, Pauline, Pelham, Pelzer, Pendleton, Pickens, Piedmont, Popular Springs, Princeton, Reidsville, Renfrew, Richburg, Rodman, Roebuck, Salem Church, Sandy Springs, Saxon, Sedalia, Sharon, Sigsbee, Simpsonville, Six Mile, Smyrna, Spartanburg, Springdale, Starr, Switzer, Taylors, Tigerville, Tirzah, Townville, Travelers Rest, Trough Shoals, Tucsapan, Una, Valley Falls, Verdery, Walhalla, Ware Shoals, Waterloo, Watts Mill, Wellford, West Greenville, West Pelzer, West Union, White Stone, Whitmire, Whitney, Woodruff, York</p> <p>Heath Springs, Pleasant Hill, S. C.</p>	<p>Douglas W. Booth, President</p> <p>W. H. Bridges, President</p>	<p>Charlotte, N. C.</p> <p>Heath Springs, S. C.</p>
--	---	--	---

Power Companies Operating in South Carolina, June 30, 1983—Continued

Power Company	Territory Served	Managing Officer	Address
Lockhart Power Company	Adamsburg, Cross Anchor, Cross Keys, Jonesville, Lockhart, Monarch, Pacolet Mills, Sedalia, S. C.	L. S. Anderson, Mgr.	Lockhart, S. C.
South Carolina Electric & Gas Co.	Arden, Ballentine, Batesburg, Blythewood, Bowman, Cameron, Carlisle, Cayce, Chapin, Chappells, College Place, Columbia, Cordova, Creston, Edgewold, Edgewood, Elloree, Forest Acres, Fort Motte, Gadsden, Gaston, Dentsville, Eastover, Eau Claire, Gilbert, Hopkins, Hyatts, Irmo, Jenkinsville, Johnston, Leesville, Lexington, Little Mountain, Livingston, Lykesland, Monetta, Neeses, North, Norway, Parler, Parr, Peak, Pelion, Perry, Pomaria, Pontiac, Red Bank, Ridge Springs, Ridgeway, Ridgewood, Rion, Rockton, Rowesville, Royster, Salley, Saluda, Santuc, Seivern, Shelton, St. Matthews, Summit, Swansea, Trenton, Wagener, Ward, West Columbia, White Rock, Woolford, S. C.	John Warren, President	Columbia, S. C.
South Carolina Electric and Gas Company Successor to South Carolina Power Company ...	Adams Run, Aiken, Allendale, Ashley Junction, Ashley Phosphate, Awendaw, Bamberg, Barnwell, Bath, Beech Island, Beaufort, Belvedere, Berry Hill, Blackville, Bluffton, Bordeaux, Boyer, Branchville, Brunson, Burnettetown, Burton, Calhoun Falls, Canadys, Charleston, Cherokee, Chicora, Clark's Hill, Clearwater, Connors, Cooper Yard, Coosawatchie, Cope, Cottageville, Crockettville, Dale, Denmark, Dorchester, Drayton Hall, Dunbarton, Dupont, Early Branch, Edgefield, Edisto Island,		

<p>South Carolina Public Service Authority (Santee-Cooper)</p>	<p>Ehrhardt, Elko, Ellenton, Estill, Eutawville, Fairfax, Furman, Garnett, Gloverville, Goodrich, Govan, Grahamville, Graniteville, Green Pond, Hampton, Hanahan, Hardeeville, Harleyville, Hendersonville, Holly Hill, Horse Pond, Isle Of Palms, James' Island, Jedburg, John's Island, Johnstown, Kline, Langley, Lincolnville, Lodge, Luray, Madison, Magnolia, Maryville, McClellanville, Meggetts, Myers, Midland Park, Miley, Modoc, Montmorenci, Mt. Carmel, Mt. Pleasant, North Augusta, North Charleston, Olar, Parksville, Plum Branch, Pocotaligo, Port Royal, Pritchardville, Ravenel, Reevesville, Rosinville, Ridgeland, Ridgeville, Round, Ruffin, Scotia, Seiglinville, Sheldon, Six Mile, Smoaks, Snellings, Springfield, St. Andrew's Parish, St. George, Sullivan's Island, Summerville, Switzerland, Sycamore, Ten Mile, Tillma, Troy, Ulmers, Vance, Varnville, Vaucuse, Walterboro, Warrentonville, White Pond, Williams, Willington, Williston, Windsor, Yemassee, Yonges Island, S. C.</p> <p>Atlantic Beach, Burgess, Conway, Cherry Grove Beach, Crescent Beach, Floral Beach, Ingram Beach, Loris, Little River, Moncks Corner, Myrtle Beach, Murrell's Inlet, Ocean Drive Beach, Socastee, Wampee, St. Stephen, S. C. .</p>	<p>John Warren, President</p> <p>William C. Mescher, President</p>	<p>Columbia, S. C.</p> <p>Moncks Corner, S. C.</p>
--	---	--	--

ACCOUNTING DEPARTMENT

The Accounting Department is composed of fourteen Accountants who report to the Accounting Manager.

The Accounting Department's primary function is to examine the books and records of Utility Companies which are requesting an increase or change in rates. A Rate Case examination implements principles and procedures based upon regulatory laws and in this respect differs from audits conducted by a Utility Company's Public Accountants. After the examination, the Staff makes adjustments in the Company's operations to achieve a "normalized" test year. Staff's Exhibits and Testimony are directed toward the Company's operations and Staff's Adjustments. Based on the Staff's report and Company information the Commissioners are able to determine an equitable rate of return on the Company's investment.

The Staff utilizes computer software equipment to perform arithmetic calculations, special analyses, and statistical sampling. The Accounting Staff implements the software in the examination of Utility Company's accounting records for Rate Case Audits. The software is an effective and efficient means to sample the Utility's expenses and plant additions in order to verify compliance with this Commission's policies and procedures.

The Staff also insures that proper cutoffs of the test year are implemented as well as substantiating that revenues, expenses, and rate items are allocated according to proper jurisdiction. Employing these procedures, Staff verifies the Utility's operations and verifies the books and records to the filing and related Exhibits.

Emphasis is placed upon policies and procedures and the instructions thereto, as stated in the Chart of Accounts for the various types of Utilities. The Chart of Accounts outlines which revenues, expenses, and asset accounts that will ultimately determine the Utilities' Rate of Return on Rate Base.

After completing the examination, a Report is prepared with Exhibits and a written explanation of each of the Exhibits. Copies are distributed to each Commissioner, the Company, Intervenors, members of the Staff, and other Parties of Record. A member of the Staff will testify and submit the Report into evidence during the Hearing.

The Department also reviews the changing prices attributable to fuel prices. Specifically electric companies utilize a fuel adjustment clause and gas companies use a purchased gas adjustment clause. The Department semiannually monitors fuel costs, performs au-

mits, prepares reports and participates in formal hearings before the Commission centering around escalating fuel costs. Audits related to refunds from gas suppliers back to S. C. jurisdictional ratepayers are also conducted. Accounting Personnel employ the computer software mentioned above after sampling parameters are established by the lead auditor.

The Accounting Department administers the Gross Receipts Tax for Regulatory Expenses paid on an annual basis by the Utilities serving customers in South Carolina. The Utilities are required to report their Revenues received with the State. Tax Assessments are based on these Revenues.

RATE CASES DURING 1982-1983

**UTILITIES DIVISION
ACCOUNTING DEPARTMENT**

AUDITS PERFORMED, July 1, 1982 - June 30, 1983

Description	No.	Type
A. D. Hare	1	Rate Case
Alpine Utilities	1	Rate Case
Archdale Utilities	1	Rate Case
Carolina Natural Gas	1	Rate Case
Carolina Water Service	1	Rate Case
Chinquapin Water	1	Rate Case
Commodore Utilities	1	Rate Case
Cornwell Land Company	1	Rate Case
CP&L	2	Refund
CP&L	2	FAC
CP&L	1	Rate Case
Duke Power Company	1	Rate Case
Duke Power Company	2	FAC
Duke Power Company—Water	1	Rate Case
Farmers Telephone Coop	1	Rate Case
Foxwood Utilities	1	Rate Case
Heater Utilities	1	Rate Case
Hughes Water Company	1	Rate Case
Isle of Palms Water	1	Refund
Kiawah Island Utilities	1	Rate Case
Lakewood Utilities	1	Rate Case
Lockhart Power Co.	1	Rate Case
Lockhart Power—Water	1	Rate Case
Oak Grove Utilities	1	Rate Case

RATE CASES DURING 1982-1983

**UTILITIES DIVISION
ACCOUNTING DEPARTMENT**

AUDITS PERFORMED, July 1, 1982 - June 30, 1983

Description	No.	Type
Peoples Natural Gas	1	Sup. Ref.
Peoples Natural Gas	1	Refund
Peoples Natural Gas	1	Rate Case
Piedmont Natural Gas	2	Rate Case
Piedmont Natural Gas	1	Sup. Ref.
Pleasant Hills Water Co.	1	Rate Case
Porter Water System	1	Rate Case
Sandhill Telephone	1	Rate Case
SCE&G	1	Rate Case
SCE&G	2	Refund
SCE&G	2	FAC
SCE&G	1	Sale of Facilities
SCE&G—Gas	1	Rate Case
Southern Bell	1	Rate Case
St. Stephens Telephone	1	Rate Case
Stephenson Investment Co.	1	Rate Case
United Cities Gas	1	PGA
Valhalla Company	1	Rate Case
Village Utilities	1	Rate Case
Wayne Environmentals, Inc.	1	Rate Case
Williston Telephone	1	Rate Case

The Accounting Department has prepared tables showing Operating Revenues, Operating Expenses, Net Operating Income, State and Local Taxes Paid, and Gross Plant in Service for Electric and Gas Utilities for the years 1978-1982. Operating Revenues, Operating Expenses, Net Operating Income, and Gross Plant in Service is shown for Telephone Utilities for the years 1981-1982 and for Mobile Communications Companies for the year 1982. Operating Revenues, Operating Expenses, and Net Operating Income are shown for Water and Sewerage Utilities for the year 1982.

The Tables are as follows:

TABLE A.—Privately Owned Electric Utilities Operating in South Carolina. Selected Statistics for South Carolina only. For the Years Ended December 31, 1979-1982.

TABLE B—Gas Utilities Operating in South Carolina. Selected Statistics for South Carolina only. For the Fiscal and Calendar Years Ended 1979-1982.

TABLE C—Telephone and Telegraph Utilities Operating in South Carolina. Selected Statistics for South Carolina only. For the Years Ended December 31, 1981-1982.

TABLE D—Mobile Communications Utilities in South Carolina. Selected Statistics for South Carolina only. For Fiscal and Calendar Year 1982.

TABLE E—Water Utilities Operating in South Carolina. Selected Statistics for South Carolina only. For Fiscal and Calendar Year 1982.

TABLE F—Sewerage Utilities Operating in South Carolina. Selected Statistics for South Carolina only. For Fiscal and Calendar Year 1982.

TABLE A

**PRIVATELY-OWNED ELECTRIC UTILITIES OPERATING IN SOUTH CAROLINA
SELECTED STATISTICS FOR SOUTH CAROLINA ONLY
FOR THE YEARS ENDED DECEMBER 31, 1979-1982**

Company	Gross Operating Revenues	Operating Expenses	Net Operating Income	Total State And Local Taxes Paid	Gross Plant In Service
	\$	\$	\$	\$	\$
Carolina Power and Light Company					
1979	148,579,008	116,990,969	31,588,039	7,774,558	388,638,619
1980	173,055,476	134,026,898	39,028,578	7,680,271	439,151,256
1981	219,465,755	172,773,257	46,692,498	6,570,063	459,892,657
1982	233,209,873	205,516,225	27,693,648	9,194,310	495,176,497
Clinton Mills, Inc.					
1979	207,845	236,992	(29,147)	245	309,253
1980	227,182	258,429	(31,247)	247	311,216
1981	241,569	254,894	(13,325)	252	314,309
1982	272,476	302,663	(30,187)	242	318,237
Duke Power Company					
1979	443,582,000	368,939,000	74,643,000	33,890,698	1,170,857,000
1980	504,888,000	419,319,000	85,569,000	32,987,084	1,241,360,000
1981	585,661,000	495,522,000	90,139,000	31,963,696	1,567,345,000
1982	650,554,000	539,867,000	110,687,000	23,479,957	1,568,497,000

Company	Gross Operating Revenues	Operating Expenses	Net Operating Income	Total State And Local Taxes Paid	Gross Plant In Service
	\$	\$	\$	\$	\$
Heath Springs Light and Power Company					
1979	404,588	397,921	6,667	11,933	364,403
1980	494,000	467,986	26,013	13,862	380,415
1981	543,947	547,265	(3,318)	11,498	419,038
1982	641,548	623,633	17,915	11,789	444,403
Lockhart Power Company					
1979	8,002,285	7,443,947	558,338	175,883	10,227,742
1980	8,021,625	7,635,462	386,163	192,274	11,335,877
1981	8,915,412	8,628,510	286,902	172,570	11,082,155
1982	9,007,902	8,395,961	611,941	183,838	11,375,186
South Carolina Electric & Gas Company					
1979	403,869,831	326,179,003	77,690,828	22,481,196	1,117,409,058
1980	470,764,573	384,014,470	86,750,103	25,841,703	1,159,775,180
1981	569,090,447	453,929,875	115,160,572	28,120,844	1,194,431,647
1982	590,044,479	448,398,150	141,646,329	29,245,002	1,236,928,849
Totals					
1979	1,004,645,557	820,187,832	184,457,725	64,334,513	2,687,806,075
1980	1,157,450,856	945,722,245	211,728,610	66,715,441	2,851,813,944
1981	1,383,918,130	1,131,655,801	252,262,329	66,833,923	3,233,484,806
1982	1,483,730,278	1,203,103,632	280,626,646	62,115,138	3,312,740,172

TABLE B

**GAS UTILITIES OPERATING IN SOUTH CAROLINA
SELECTED STATISTICS FOR SOUTH CAROLINA ONLY
FOR THE YEARS ENDED DECEMBER 31, 1979-1982**

Company	Gross Operating Revenues	Operating Expenses	Net Operating Income	Total State and Local Taxes Paid	Gross Plant In Service
	\$	\$	\$	\$	\$
Carolina Pipeline Company*					
1979	103,052,225	97,308,550	5,743,675	863,959	33,431,547
1980	102,760,609	97,609,324	5,331,285	969,947	34,001,901
1981	133,965,788	128,801,892	5,163,896	976,729	38,018,325
1982	76,292,272	73,254,723	3,037,549	1,563,385	39,633,549
Peoples Natural Gas Company of South Carolina					
1979	8,413,613	8,104,719	308,894	170,132	4,544,965
1980	9,980,806	9,654,726	326,080	167,874	5,210,741
1981	14,811,932	14,445,859	366,073	184,253	6,036,391
1982	15,930,746	15,559,073	371,673	246,837	7,229,503
Piedmont Natural Gas Company					
1979	47,128,631	43,026,034	4,102,597	1,185,067	43,750,254
1980	62,587,430	58,394,495	4,192,935	615,174	47,166,726
1981	78,065,316	73,790,572	4,274,744	1,331,966	54,818,590
1982	78,822,081	74,632,132	4,189,949	1,443,450	57,418,362

Company	Gross Operating Revenues	Operating Expenses	Net Operating Income	Total State and Local Taxes Paid	Gross Plant In Service
	\$	\$	\$	\$	\$
South Carolina Electric & Gas Company					
1979	138,385,964	132,832,911	5,553,053	2,994,289	135,857,189
1980	157,643,449	149,288,823	8,354,626	4,364,170	141,722,331
1981	188,167,415	183,577,562	4,589,853	6,201,344	150,669,411
1982	266,388,612	257,332,654	9,055,958	5,397,752	210,397,803
United Cities Gas Company					
1979	4,475,322	4,075,221	400,101	91,502	2,983,475
1980	5,191,702	4,822,009	369,694	134,235	3,232,761
1981	6,926,402	6,439,222	487,180	120,132	3,436,159
1982	6,594,270	6,319,066	275,204	122,870	3,692,376
Carolina Natural Gas Corporation*					
1979	9,887,764	9,342,515	545,249	486,465	10,298,126
1980	11,395,076	10,874,158	420,918	199,650	11,363,792
1981	14,986,243	14,174,592	811,651	191,576	13,408,528
1982	9,769,268	9,217,617	551,651	201,984	14,252,433
Totals					
1979	311,343,519	294,689,950	16,653,569	5,791,414	230,865,556
1980	349,559,072	330,743,535	18,995,538	6,451,050	242,693,252
1981	436,923,096	421,229,699	15,691,397	9,006,000	266,387,404
1982	453,797,249	436,315,265	17,481,984	8,976,278	332,624,026

*Nine (9) Month Period Reflected For 1982 Due To Change In Reporting Period.

TABLE C

**TELEPHONE AND TELEGRAPH UTILITIES OPERATING IN SOUTH CAROLINA
SELECTED STATISTICS FOR TOTAL SOUTH CAROLINA OPERATIONS
FOR THE YEARS ENDED DECEMBER 31, 1981 - 1982**

Company	Gross Operating Revenues		Operating Expenses		Net Operating Income (Loss)		Gross Plant In Service	
	1981	1982	1981	1982	1981	1982	1981	1982
	\$	\$	\$	\$	\$	\$	\$	\$
Bluffton Telephone Company	1,115,922	862,184	827,753	704,083	288,169	158,146	2,050,662	3,086,419
Cheanee Telephone Company, Inc.	796,879	946,015	674,292	789,311	122,587	156,704	3,965,760	4,469,311
Chester Telephone Company	3,815,832	3,864,317	2,699,835	3,115,269	615,997	749,048	12,305,521	13,461,760
Continental Telephone Co. of S. C.	4,561,260	5,368,496	3,969,044	4,288,474	592,216	1,080,022	13,458,887	14,567,399
Farmers Telephone Corporation	12,610,162	14,019,518	10,350,061	12,078,407	2,260,101	1,941,111	59,272,149	64,675,448
Fort Mill Telephone Company	2,553,910	3,209,171	2,186,217	2,586,116	367,693	623,055	8,290,991	9,440,087
General Telephone Co. of Southeast	62,187,410	68,562,088	49,011,541	54,072,092	13,175,869	14,489,946	162,144,858	173,710,556
Hargray Telephone Company	9,889,888	11,835,632	6,682,235	8,423,303	2,767,653	3,412,329	23,713,412	26,853,732
Heath Springs Telephone Co.	217,603	257,895	155,338	189,784	62,265	68,111	728,834	781,757
Home Telephone Company	4,298,682	5,246,286	3,499,348	4,192,803	799,334	1,053,483	17,997,659	19,964,568
Horry Telephone Cooperative	7,469,759	8,213,814	5,346,373	6,594,598	2,123,386	1,619,216	36,313,887	39,836,448
Lancaster Telephone Company	6,212,993	6,906,866	5,158,436	5,735,731	1,054,557	1,171,135	19,107,798	20,590,876
Lockhart Telephone Company	165,070	183,363	143,791	154,601	21,279	28,762	571,499	580,099
McClellanville Telephone Company	468,531	499,076	367,366	421,693	101,165	77,383	1,272,564	1,658,983
Mid-Carolina Telephone Company	720,391	816,802	551,055	643,107	169,336	168,695	2,726,222	2,843,181
Norway Telephone Company	174,943	207,673	125,023	137,165	49,915	70,508	589,140	619,405
Palmetto Telephone Cooperative	2,569,845	2,900,612	1,698,497	1,763,966	871,348	1,136,646	15,216,588	15,743,560
Piedmont Telephone Cooperative	2,028,606	2,289,275	1,682,198	1,801,326	346,408	487,949	13,409,357	13,872,792
Pond Branch Telephone Company	2,765,442	2,519,485	2,126,358	2,224,264	639,084	295,221	9,735,285	10,867,733
Ridge Telephone Company	362,838	399,529	298,923	341,831	63,910	57,698	1,728,804	1,728,870
Ridgeway Telephone Company	297,177	353,394	218,993	259,364	78,184	94,030	1,235,201	1,369,101
Rock Hill Telephone Company	12,741,148	13,987,068	10,708,313	11,654,260	2,087,830	2,332,808	37,023,023	39,924,257
Sand Hill Telephone Company	2,676,377	3,142,113	1,678,185	1,857,148	998,192	1,284,965	13,723,148	15,131,185
South Carolina Telephone Corporation	5,978,893	7,556,311	4,511,424	5,465,590	1,467,469	2,090,721	25,724,568	28,057,580
Southern Bell Telephone & Telegraph	588,435,114	655,075,216	476,073,196	531,284,618	112,361,918	123,790,598	1,469,065,125	1,569,746,006
St. Matthews Telephone Company	1,098,951	1,289,561	825,343	915,608	273,608	373,958	5,066,322	5,618,069
St. Stephen Telephone Company	1,081,716	1,415,950	871,473	1,067,122	210,243	348,823	4,100,550	4,360,119
United Telephone of the Carolinas	29,162,538	33,706,498	22,162,334	25,810,889	6,999,704	7,896,609	98,873,234	106,736,015
West Carolina Rural Telephone Co-op.	1,822,299	2,129,375	1,817,502	1,434,314	504,797	695,061	11,973,645	12,432,575
Williston Telephone Company	1,480,188	1,314,233	1,158,729	1,106,814	321,409	207,419	5,509,945	5,793,401
TOTALS	768,760,317	859,077,766	617,024,691	691,118,601	151,735,626	167,969,165	2,076,899,638	2,232,521,292

TABLE D

**MOBILE COMMUNICATIONS OPERATING IN SOUTH CAROLINA
SELECTED STATISTICS FOR SOUTH CAROLINA OPERATIONS ONLY
FOR THE YEAR ENDED DECEMBER 31, 1982**

Company	Gross Operating Revenues	Operating Expenses	Net Operating Income (Loss)	Gross Plant In Service
	\$	\$	\$	\$
Able Communications, Inc.	406,376	336,725	69,651	775,047
Asta, Inc.	337,773	321,297	16,476	238,509
Camden Mobile Communications, Inc.	16,247	12,479	3,768	27,411
Columbia Telephone Answering Service	165,783	160,333	5,450	159,747
Eagle Communications, Inc.	63,832	68,343	(4,511)	134,125
Evans Communications, Inc.	619,525	562,610	56,915	818,909
Georgia Paging Company (1)	623,356	495,089	128,267	1,074,775
Mobile Phone of Charleston, Inc.	76,015	68,565	7,450	203,986
Morris Communications, Inc.	1,962,893	1,769,436	193,457	1,840,656
Parker Electronics	140,093	127,211	12,882	101,062
Rock Hill Mobile Communications, Inc.	15,018	18,684	(3,666)	8,872
Telepage of Beaufort, Inc.	41,607	36,941	4,666	33,055
Telepage of South Carolina	729,294	568,075	161,219	511,497
TOTALS	<u>5,197,812</u>	<u>4,545,788</u>	<u>652,024</u>	<u>5,927,651</u>

(1) Georgia and South Carolina Combined Operations

TABLE E
WATER UTILITIES OPERATING IN SOUTH CAROLINA
SELECTED STATISTICS FROM
ANNUAL REPORTS — S. C. ONLY
FOR FISCAL AND CALENDAR YEAR, 1982

Company	Gross Operating Revenue	Operating Expense	Net Operating Income or (Loss)
	\$	\$	\$
A. D. Hare Water Works and Pump Service	35,161	47,109	(11,948)
1 Augusta Fields Utility System, Inc.	6,982	5,712	1,270
B & B Water Works, Inc.	N/A	N/A	N/A
Bobby Joe Solesbee Utility Corporation	1,450	1,716	(266)
Bobo Well and Pump Company	15,811	29,531	(13,720)
Blue Ribbon Water Corporation	17,051	16,717	334
2 Buckeye Water Co., Inc.	2,992	7,683	(4,641)
2 Carolina Water Service, Inc.	629,032	510,243	118,789
Clinton Mills, Inc.	18,787	89,136	(70,349)
Coates Road Water System, Inc.	975	1,901	(926)
2 Commodore Utility Corporation	142,302	74,092	68,210
2 Cornwell Land Company, Inc.	3,830	5,788	(1,958)
Crest Water Company	18,242	18,899	(657)
2 DeBordieu Corporation	13,812	9,263	4,549
Dinkins Water System	8,697	9,516	(819)
Duke Power Company	2,395,853	2,045,271	350,582
E & R Partnership	22,049	16,841	5,208
E. B. Stone Utility Company	1,479	582	897
Edenwood Water Company, Inc.	57,828	55,489	2,339
Fairlawn Utilities, Inc.	2,015	3,490	(1,475)
Fork Shoals Water Works	1,971	2,742	(771)
2 Foxwood Utilities, Inc.	17,645	19,324	(1,679)
Gnato Acres	288	264	24
2 Graniteville Company	43,996	63,340	(19,344)
Hallmark Shores Water System	N/A	N/A	N/A
Heater Utilities, Inc.	551,755	525,073	26,682
Hermitage Utility Company, Inc.	N/A	N/A	N/A
Hermitage Water Systems of Lexington, Inc.	2,226	2,226	-0-
2 Hilton Head Plantation Utilities, Inc.	173,795	315,033	(141,238)
Hilton Head Utilities, Inc.	24,833	62,171	(37,338)
Horse Island Service Corporation	1,705	4,788	(3,083)
Hughes Water Systems, Inc.	119,770	183,917	(14,147)
Hyde Park Water Works	4,677	2,487	2,190
2 Island Utilities, Inc.	98,038	121,976	(23,938)
2 Isle of Palms Water Company, Inc.	302,586	254,422	48,164
Kelley, Inc.	13,669	17,665	(3,996)
2 Kiawah Island Utility Company, Inc.	235,958	341,810	(105,852)
Lake Chinquapin Water Commission, Inc.	2,825	2,517	308
Lake Murray Utilities, Inc.	6,885	7,913	(1,028)
2 Lake Murray Water and Sewer Corporation	13,210	13,069	141
2 Lockhart Power Company	71,347	68,208	3,139
2 Long Cove Club Utilities, Inc.	4,627	24,341	(19,714)
2 Lost Wilderness, Inc.	N/A	N/A	N/A
2 Marina Colony, Inc.	4,320	4,250	70
Mark Water Works, Inc.	541	1,255	(714)
McCombs Water System	N/A	N/A	N/A
Meadowbrook Water Works, Inc.	N/A	N/A	N/A
Mecklenburg Utilities, Inc.	9,991	11,689	(1,798)
Mitchell Saxon Water Systems	640	676	(36)
1 Mountain Bay Estates Utility Company, Inc.	36,050	27,775	8,275
Nicholson Water Company	4,926	4,301	625
2 North Pines Utility Company, Inc.	19,961	16,380	3,581
2 Oak Grove Estates Utilities, Inc.	20,559	19,156	1,403
2 Old Barnwell Road Utility Company, Inc.	24,743	18,456	6,287
2 Pinedale Utility Company, Inc.	3,305	15,230	(11,925)
Porter Water Company	5,484	9,394	(3,910)
River Pines Water System, Inc.	7,739	5,699	2,040
2 Seabrook Utility Company	87,458	225,205	(137,747)
Smith Water Works	N/A	N/A	N/A
Southland Utilities, Inc.	N/A	N/A	N/A

Company	Gross Operating Revenue	Operating Expense	Net Operating Income or (Loss)
	\$	\$	\$
Springlake Estates Water System	1,375	338	1,037
Stephenson Investment Company, Inc.	2,520	751	1,769
Taylor Waterworks, Inc.	460	973	(513)
2 Tega Cay Utilities, Inc.	79,886	117,852	(37,966)
Trans Tech, Inc.	N/A	N/A	N/A
1 Village Utilities, Inc.	N/A	N/A	N/A
Warren Norman & Company	28,945	25,294	3,651
Waterford, Inc.	1,210	5,939	(4,729)
Water Oak Utility Company, Inc.	31,969	26,196	5,773
Water Systems, Inc.	44,332	55,317	(10,985)
Wayne Environmentals, Inc.	9,584	46,492	(36,908)
Westover Water Company	N/A	N/A	N/A
West Side Water Company	N/A	N/A	N/A
1 Woodforest Utility Company, Inc.	13,498	19,939	(6,441)
Woodlawn Subdivison Water Company, Inc.	2,940	1,430	1,510
TOTALS	<u>5,528,490</u>	<u>5,592,202</u>	<u>(63,712)</u>

N/A — Not Available

(1) — Combined Water and Sewerage

(2) — Sewerage Operations Reported separately

TABLE F

**SEWERAGE UTILITIES OPERATING
IN SOUTH CAROLINA
SELECTED STATISTICS FROM
ANNUAL REPORTS — S. C. ONLY
FOR FISCAL YEAR AND CALENDAR YEAR, 1982**

Company	Gross Operating Revenue	Operating Expense	Net Operating Income or (Loss)
	\$	\$	\$
Alpine Utilities, Inc.	318,614	346,665	(28,051)
Anco Utilities, Inc.	4,145	3,940	205
Archdale Utilities Corporation	N/A	N/A	N/A
Arlington Development Company	-0-	20,000	(20,000)
Artistic Builders, Inc.	18,572	18,421	151
Briarcliff Estates	25,219	16,131	9,088
Brookside Sewer District	29,367	11,845	17,522
Buckeye Sewer Co., Inc.	1,680	8,768	(7,088)
Bush River Service Company, Inc.	15,645	27,125	(11,480)
Bush River Utilities, Inc.	108,000	99,000	9,000
Business Brokers of the South, Inc.	1,498	5,977	(4,479)
2 Carolina Water Service, Inc.	1,061,414	863,546	197,868
Commodore Utility Corporation	111,616	106,730	4,886
2 Cornwell Utility Corporation	2,701	5,007	(2,306)
Debordieu Corporation	12,431	8,837	3,594
Development Service, Inc.	92,539	90,017	2,522
East-Bluff Sewage Company, Inc.	33,343	39,790	(6,447)
Farrow Terrace Utility Company	5,511	6,273	(762)
Folly Utilities, Inc.	N/A	N/A	N/A
Fort Lawn Development Company, Inc.	4,226	4,779	(553)
2 Foxwood Utilities, Inc.	7,068	10,796	(3,728)
Fripp Island Sewer Systems, Inc.	41,160	46,372	(5,212)
General Utilities, Inc.	21,020	28,167	(7,147)
2 Graniteville Company, Inc.	44,497	60,678	(16,181)
Greystone Utility Corporation	41,661	35,477	6,184
Harkin Utility Service, Inc.	2,952	2,570	382
Highland Forest Wastewater System	4,500	12,900	(8,400)
Hilton Head Plantation Utilities, Inc.	128,384	302,349	(173,965)
2 Island Utilities, Inc.	80,067	79,083	984
2 Isle of Palms Water Co.	49,495	46,516	2,979
Jackson Mills	2,969	19,235	(16,276)
2 Kiawah Island Utility, Inc.	153,045	101,977	51,068
2 Lake Murray Water and Sewer Corporation	17,842	25,562	(7,720)
Lakewood Devel. Inc.	1,788	2,686	(898)
Leesburg Utilities Company, Inc.	19,212	22,857	(3,645)
2 Lockhart Power Company	15,906	15,556	350
Locksley Hall, Inc.	-0-	-0-	-0-
2 Long Cove Club Utilities, Inc.	5,887	40,491	(34,604)
2 Lost Wilderness, Inc.	N/A	N/A	N/A
2 Marina Colony, Inc.	4,320	4,250	70
Matthews Realty, Inc.	4,699	6,485	(1,786)
Midlands Utility, Inc.	202,532	187,128	15,404
North Fall Acres Sewer System	4,666	6,538	(1,872)
2 North Pines Utility Company, Inc.	18,691	16,361	2,330
2 Oak Grove Estates Utilities, Inc.	14,934	18,335	(3,401)
2 Old Barnwell Road Utility Company, Inc.	34,438	35,933	(1,495)
Pilot Corporation	2,538	2,716	122
2 Pinedale Utility Company, Inc.	16,340	9,492	7,348
Pine Forest Utilities, Inc.	N/A	N/A	N/A
Pine Valley Estates Utility	N/A	N/A	N/A
Quail Hollow Company	45,904	35,760	10,144
R & R Environmental Systems	99,071	108,646	(4,575)
Ribaut Insurance Agency, Inc.	3,087	7,936	(4,849)
Rice Corporation	312	---	312
Rock Springs Development Corporation	N/A	N/A	N/A
S. C. Utilities, Inc.	16,178	36,336	(20,158)
2 Seabrook Utility Company	87,458	64,143	23,315
Shelley Enterprises, Inc.	N/A	N/A	N/A

Company	Gross Operating Revenue	Operating Expense	Net Operating Income or (Loss)
	\$	\$	\$
Stratton Hall Wastewater, Inc.	N/A	N/A	N/A
Tall Pines Utilities Corporation	47,231	42,271	4,960
2 Tega Cay Utilities, Inc.	79,896	90,158	(10,272)
Terraceway Service Corporation	88,578	116,600	(28,022)
Twin Lakes of Sumter, Inc.	5,112	13,087	(7,975)
Utilities, Inc.	23,750	25,319	(1,569)
Valhalla Company	20,379	17,579	2,900
Water Oak Utility Company, Inc.	20,529	16,749	4,080
Wayne Environmentals, Inc.	9,223	93,891	(84,668)
Wildwood Utilities, Inc.	25,123	66,518	(41,395)
Woodland Utilities, Inc.	51,899	51,782	117
TOTALS	<u>3,411,942</u>	<u>3,605,136</u>	<u>(193,194)</u>

N/A - Not Available

(2) - Water Operations Reported separately.

TRANSPORTATION DIVISION

The functions of this Division are to enforce the *South Carolina Motor Vehicle Carrier Law, 1976*, as amended, and the Commission's *Rules and Regulations Pertaining to Motor Carriers*. The Law provides for the regulations, supervision and control of persons, firms, corporations, etc., operating motor vehicles used in the business of transporting persons or property for compensation over the highways of the State, and imposes license fees to cover the cost of administration.

The Transportation Division consists of the following Departments:

1. Audit Department
2. Certificate Department
3. Enforcement and Safety Department
4. Insurance Department
5. Licensing Department
6. Rates, Rails and Rail Safety Department
7. Registration Department

AUDIT DEPARTMENT

1982-83

This department performs audits of regulated motor carriers operating within South Carolina to insure that the carriers are operating in accordance with the Rules and Regulations of the Commission. These audits require a knowledge of various rate structures as there are various types of commodity groupings which are enumerated below:

(1) COMMODITIES IN GENERAL

This group includes property and commodities generally, except (a) commodities in bulk in tank trucks, (b) explosives, radioactive materials, and other dangerous materials, and (c) household goods.

(2) HEAVY COMMODITIES

This group includes machinery, property, and equipment of such length, weight, bulk, or other unusual characteristics as to require special vehicles or facilities for handling, such as heavy road machinery, heavy textile, electrical, or shop machinery, large tanks, boilers, structural steel, pipe, monuments, grave vaults, bank vaults, houses, and other property of such unusual nature as to require special services or special

facilities, such as dismantling or resetting machinery, or the use of hoist, rigging, skidding, or other similar devices in moving or placing.

(3) **PETROLEUM AND PETROLEUM PRODUCTS, LIQUID, IN BULK IN TANK TRUCKS**

Petroleum products are defined as those derived from the main stream of the crude oil and natural gas, containing only the elements of carbon and hydrogen, and unaltered by the addition of any atom or atoms of elements other than those of said carbon and hydrogen.

(4) **LIQUID REFRIGERATED PRODUCTS IN BULK**

This group includes milk, cream, fruit juices, beverages, and other perishable liquid products which require transportation in vehicles provided with temperature controls.

(5) **SOLID REFRIGERATED PRODUCTS**

This group includes property of a perishable nature such as fish, meats, meat products, fruits, vegetables, dairy products, and other commodities which require refrigeration while in transit.

(6) **AGRICULTURAL COMMODITIES**

This group includes, but is not limited to, unmanufactured farm, dairy, and orchard products, including wheat, corn, oats, peanuts, potatoes, melons, fruits, vegetables, cotton seed, cotton seed meal in hulls, cotton in bales, seeds, feeds, eggs, leaf tobacco, soybeans, and other farm produce.

(7) **DRY FERTILIZER AND DRY FERTILIZER MATERIALS**

This group includes ordinary commercial fertilizer, fish scrap, lime, manure, and related soil fertilization materials, provided applications for authority to haul only bagged fertilizer and dry fertilizer in bulk in Killebrew trucks will be approved without hearing subject to written complaint within 30 days.

(8) **FOREST PRODUCTS**

This group includes logs, poles, pilings, pulpwood, cores, cross ties, slabs, fence posts, and other raw products of the forest. It does not include finished or processed products derived from such raw products nor does it include commodities considered to be building materials.

(9) **BUILDING MATERIALS**

This group includes rough or dressed lumber, flooring, plywood, weather boarding, sheathing, roofing, cut stone, slats, tile, brick, cement, cinder blocks, and other building materials usually transported on flat bed trucks.

(10) **LIVESTOCK AND POULTRY**

This group includes horses, mules, cattle, hogs, sheep, other livestock, and poultry.

(11) **EXPLOSIVES AND OTHER DANGEROUS ARTICLES**

This group includes explosives, flammable liquids, flammable solids, oxidizing materials, compressed gases and poisons, and radioactive materials, the handling and transportation of which requires a knowledge of the danger involved.

(12) **MOTOR VEHICLES**

This group includes transportation of automobiles, trucks, tractors, trailers (except mobile homes), chassis, and other motor vehicles, whether wholly or partially assembled.

(13) **DUMP TRUCK OPERATIONS**

This group includes the transportation of sand, gravel, dirt, fill dirt, coal, rocks, hot and cold plant-mixed asphalt, and other materials in bulk in dump trucks, provided that applications for debris will be approved without hearing subject to written complaint within 30 days.

(14) **HOUSEHOLD GOODS**

This group includes personal effects and property used or to be used in a dwelling when a part of the equipment or supply of such dwelling; furniture, fixtures, equipment and the property of stores, offices, museums, institutions, hospitals, or other establishments when a part of the stock, equipment, or supply of such stores, offices, museums, institutions, hospitals, or other establishments; and articles including objects of art, displays and exhibits, which because of their unusual nature or value require specialized handling and equipment usually employed in moving household goods.

(15) **ARMORED CAR OPERATIONS**

This group includes the transportation of commodities of unusual value transported in armored motor vehicles under the protection of armed guards.

(16) **OTHER SPECIFIC COMMODITIES**

Under this group number and caption, the applicant should describe any other commodities, not included in any of the foregoing groups, which it proposes to transport.

The objective of auditing carriers for rate increase applications is to determine whether the carriers' operating revenues and expenses were properly reported. This is accomplished by reviewing the work done by external and internal auditors by selecting several carriers and verifying that these billings were in accordance

with approved rate schedules, by determining whether unbilled revenues were booked, and that the practice was consistent with preceding periods and that the expenses associated with the earning of these revenues were properly reported. A report is prepared reflecting the preceding and is submitted into evidence during the rate hearing along with the testimony of one of the auditors.

The Audit Department received several complaints regarding services performed for the public by a common carrier as well as complaints filed by one carrier against another. Each complaint was handled without necessity of a formal hearing.

There were no applications for rate increases submitted during the fiscal year. During the same time period, the department audited 278 carriers and recommended 92 tickets for violations. These carriers had diverse authority covering the entire state of South Carolina with numerous carriers having interstate authority as well.

Pursuant to the Commission's rules and regulations, the Audit Department receives and maintains Annual Reports of Class D, E and F Motor Carriers which totaled 695 during the fiscal year. Gross revenue of the carriers ranged from \$288,448,000 to \$2,000.00. Failure to file an Annual Report results in a "Rule to Show Cause" being issued against the carrier as well as a fine.

CERTIFICATE DEPARTMENT

The Certificate Department of the Transportation Division processes all Applications to acquire new authority, amend existing authority, transfer authority from one carrier to another, suspend authority, and to cancel authority.

There are presently 1344 motor carriers holding intrastate authority granted by this Commission, as follows:

Class	No. of Carriers	Type of Carrier
A	54	Common carrier transporting passengers over regular routes and on regular schedules.
B	1	Common carrier transporting passengers not over regular routes or on regular schedules.
C	272	Common carrier — taxicabs and charter buses not operating over regular routes or on regular schedules.
D	13	Common carrier transporting property over regular routes and on regular schedules.
E	821	Common carrier transporting property over irregular routes and on irregular schedules.
F	183	Contract carrier transporting property over irregular routes and on irregular schedules.

Notices of Filing (which must be published in newspapers of general coverage in the affected service areas) are prepared on Applications for Classes A, Charter C, D, E, and F, for new authority, and to transfer or amend existing authority. Notices of Filing were prepared on 127 Applications during this fiscal year, and 28 public hearings were held, as indicated below:

HEARINGS HELD DURING 1982-83 FISCAL YEAR

Matters Heard	DISPOSITION				
	Number of Hearings	Approved	Denied	Continued	Pending
Class C Charter					
For New Certificate	2		1	1	
To Amend Certificate	1				1
Class E					
For New Certificate	22	14	4	3	1
To Amend Certificate	3	3			
Petition for Rule to Show Cause	2	2			
Fiscal Year Totals	28	17	5	4	2

Applications for Class A (Restricted) and Class C (Taxicab) Certificates do not usually require Notices of Filing, or hearings. It is usual procedure for each of these Applications, after going through the acceptance process, to be presented to the Commission for a decision.

The Certificate Department processed and issued 506 Orders during the fiscal year. The majority of the Orders involved the issuance of Certificates of Public Convenience and Necessity, which are only issued after the motor carrier has filed all applicable insurance, rates, and fees for license tags.

There were 511 Certificates of Public Convenience and Necessity processed during the fiscal year, as outlined below:

CERTIFICATES PROCESSED DURING 1982-83 FISCAL YEAR

Class of Certificates	New	Amended	Transferred	Cancelled	Suspended	Total Certificates Processed
Class A	7			34	2	43
Class C	64	3		58	4	129
Class D				2		2
Class E	132	26	13	77	10	258
Class F	37	20		21	1	79
Fiscal Year Totals	240	49	13	192	17	511

MOTOR CARRIER TRANSACTIONS 1982-1983

	Monthly Total	New Authority Granted	Amended	Cancelled	Suspended	Suspension Lifted	Transferred	Transfer of Stock Sale	Leased	Denied	Withdrawn	Reinstated	Reconsidered	Corrected	Dismissed	Rescinded
July	33	23	1	1	2	3	3
August	20	13	3	2	2
September	48	26	3	14	3	1	1
October	38	14	2	11	3	1	..	3	2	1	1
November	145	18	3	118	1	1	3	1
December	21	11	1	2	1	2	1	..	2	1
January	42	23	6	2	1	1	1	3	3	2
February	21	16	2	..	1	1	1	..
March	61	36	6	8	7	1	2	1
April	66	23	6	31	1	1	2	1	1	..
May	32	23	5	1	1	1	1
June	52	32	13	3	1	1	2
Fiscal Year Totals	579	258	61	191	17	2	6	3	..	8	9	4	2	1	14	13

MOTOR CARRIER TRANSACTIONS BY CLASS 1982-1983

	Total Transactions	New Authority Granted	Amended	Cancelled	Suspended	Suspension Lifted	Transferred	Transfer of Stock Sale	Leased	Denied	Withdrawn	Reinstated	Reconsidered	Corrected	Dismissed	Rescinded
Class A	44	6	..	34	2	1	1
Class B
Class C	144	66	5	58	4	2	3	1	..	2	3
Class D	2	2
Class E	307	144	32	77	10	..	6	3	..	5	8	4	1	1	8	8
Class F	82	42	14	20	1	1	3	1
Fiscal Year Totals	579	258	61	191	17	2	6	3	..	8	9	4	2	1	14	13

ENFORCEMENT AND SAFETY 1982-1983

The enforcement of Motor Vehicle Carrier Law of the State, Section 58-23-10 through 58-23-60 of the *South Carolina Code of Laws*, 1976, as amended, is carried out by the staff of thirty-nine Inspectors stationed throughout the State. During the Fiscal Year 1982-1983, these Inspectors made a total of 6,614 arrests with a total of \$215,945.00 in fines.

All of the Inspectors are certified by the South Carolina State Law Enforcement Division, and all have attended or will have attended in the near future the South Carolina Criminal Justice Academy as required by law. They wear uniforms and patrol in marked cars with two-way radios. The patrol cars are also equipped with C.B. radios which are used to contact other law enforcement agents and to assist the public. Their duties and responsibilities are to insure that the motor carriers under the jurisdiction of the Public Service Commission comply with the *South Carolina Motor Vehicle Carrier Law* and the Commission's *Rules and Regulations Pertaining to Motor Carriers*. The Inspectors investigate suspected violations, issue warrants of arrest, initiate legal proceedings for violations, and work with the regulated carriers and with the public in helping them comply with the law. The Inspectors made 4,253 regulatory arrests with \$145,585.00 in regulatory fines during the fiscal year.

The Commission's Safety Program was started in 1971, and we now have fourteen Safety Inspectors stationed throughout South Carolina who specialize in Safety work. They conduct safety surveys of motor vehicles on Highways and at terminals of for-hire carriers, express companies and bus lines. During the Fiscal Year 1982-1983, the Safety Inspectors made 4,148 Safety Inspections from which 744 vehicles were placed out-of-service, and 2,361 Safety Arrests were made with \$70,360.00 in Safety Fines.

ENFORCEMENT REPORT FISCAL YEAR 1982-1983

	No Intrastate Authority	Operating Out of Scope of SCFSC Authority	No Interstate Authority (Interstate Carrier Domiciled in SC)	PSC Tag Violation (Intrastate)	PSC Tag Violation (Interstate)	No Registered Certified Interstate Authority	No Registered Exempt Interstate Authority	No Certificated Cab Card	No Exempt Cab Card	No Certificated Identification Stamp	No Exempt Identification Stamp
July 1982	11	2	0	2	6	33	35	56	32	62	20
August 1982	8	5	2	14	27	23	9	80	23	69	13
September 1982	12	5	4	15	35	28	9	84	24	75	14
October 1982	10	3	1	15	25	41	20	82	28	87	16
November 1982	16	6	2	8	26	42	23	74	40	87	17
December 1982	13	6	1	5	16	33	24	63	20	62	16
January 1983	12	3	1	9	20	26	28	58	27	65	8
February 1983	12	7	0	12	21	23	18	127	28	230	43
March 1983	13	2	1	12	14	29	24	103	27	111	11
April 1983	7	2	1	15	18	27	15	65	20	62	15
May 1983	6	10	2	10	11	25	16	57	35	65	9
June 1983	8	2	4	9	11	31	14	65	51	70	17
	Sec. 58-23-20	Sec. 58-23-40	Sec. 58-23-80, R. 103-152	Sec. 58-23-40, R. 103-154	Sec. 58-23-80, R. 103-152	Sec. 58-23-640, R. 103-251	Sec. 58-23-640, R. 103-261	Sec. 58-23-640, R. 103-253-5	Sec. 58-23-640, R. 103-263-4	Sec. 58-23-640, R. 103-257-1	Sec. 58-23-640, R. 103-267-1
Fiscal Year Totals	128	53	19	126	230	360	235	914	355	1,045	199

ENFORCEMENT REPORT FISCAL YEAR 1982-1983

	Failure to Observe Road Control Signs	No Lease on Vehicle	No Lease on File	No Identification Markings on Vehicle	Violation of Classified Drivers License	No Waybill or Bill of Lading	Improper Displayed PSC Tag	No Rates on File	Improper Rates	No Annual Report on File	Improper Exempt Cab Card
July 1982	18	3	0	5	4	0	0	0	7	1	
August 1982	9	2	0	5	2	2	0	7	0	2	
September 1982	5	0	0	0	2	2	0	1	0	2	
October 1982	21	2	0	2	1	1	0	1	0	2	
November 1982	17	2	0	1	1	0	0	38	0	2	
December 1982	25	2	2	1	2	2	0	3	0	0	
January 1983	20	1	0	1	3	2	0	5	0	0	
February 1983	16	1	0	1	0	0	2	3	0	0	
March 1983	35	5	1	4	0	2	0	22	0	1	
April 1983	29	5	0	0	0	1	1	4	2	0	
May 1983	29	1	0	3	2	2	0	7	24	0	
June 1983	33	2	0	3	2	0	1	3	8	2	
	Sec. 56-5-960	Sec. 55-23-80, R. 103-222-1	Sec. 55-23-80, R. 103-222-1	Sec. 55-23-80, R. 103-153-1	Sec. 56-1-130	Sec. 55-23-80, R. 103-162	Sec. 55-23-80, R. 103-154	Sec. 55-23-1010, R. 103-190	Sec. 55-23-1010, R. 103-200	Sec. 55-23-80, R. 103-231	Sec. 55-23-640, R. 103-263-4
Fiscal Year Totals	257	26	3	26	19	14	4	2	92	46	11

ENFORCEMENT REPORT FISCAL YEAR 1982-1983

	Reproduction of Certified Cab Card	Improper Certificated Cab Card	No Interstate Insurance on File	No Public Liability and Property Damage Insurance on File	No Cargo Insurance on File	Violation of Buy and Sell Law	No Contract on File	Speeding (Wreckless Driving)	Wreckless Driving	Improper Bills of Lading	No Route Plan
July 1982	1	6	1	0	0	0	0	0	0	0	1
August 1982	2	6	0	0	0	2	0	0	1	0	0
September 1982	3	16	0	0	0	0	0	0	0	1	0
October 1982	0	2	1	0	0	2	2	0	1	0	0
November 1982	0	2	1	0	0	0	0	0	0	0	0
December 1982	1	9	1	0	0	0	0	0	0	0	0
January 1983	0	2	0	0	1	0	0	0	0	0	0
February 1983	1	4	0	1	1	0	0	0	0	0	0
March 1983	2	2	0	1	0	0	0	0	0	0	0
April 1983	0	4	0	1	0	0	0	0	0	0	0
May 1983	0	1	1	0	0	0	0	1	0	0	0
June 1983	0	0	3	0	1	0	0	0	0	0	0
	Sec. 53-23-640, R. 103-256-1	Sec. 53-23-640, R. 103-253-4	Sec. 53-23-640, R. 103-254-1	Sec. 53-23-910, R. 103-170	Sec. 53-23-910, R. 103-173	Sec. 53-23-30	Sec. 53-23-1010, R. 103-190	Sec. 53-5-4410	Sec. 53-5-2920	Sec. 53-23-20, R. 103-159	Sec. 53-23-80, R. 397.9
Fiscal Year Totals	10	54	8	3	3	4	2	1	2	1	1

**ENFORCEMENT REPORT
FISCAL YEAR 1982-1983**

	Monthly Totals	Total Amount in Fines
July 1982	306	\$ 11,230.00
August 1982	312	\$ 10,610.00
September 1982	340	\$ 11,310.00
October 1982	367	\$ 13,360.00
November 1982	405	\$ 14,430.00
December 1982	307	\$ 10,800.00
January 1983	292	\$ 9,930.00
February 1983	551	\$ 17,277.00
March 1983	422	\$ 14,310.00
April 1983	294	\$ 10,070.00
May 1983	317	\$ 10,745.00
June 1983	340	\$ 11,513.00
	4,253	\$145,585.00

1982-1983 FISCAL YEAR SAFETY REPORT

Month	Safety Inspections	Out of Service Vehicles	Safety Arrests	Amount in Fines
July, 1982	510	41	403	\$12,085.00
August, 1982	558	68	275	\$ 8,175.00
September, 1982	419	58	224	\$ 6,245.00
October, 1982	432	106	184	\$ 5,615.00
November, 1982	364	66	183	\$ 5,520.00
December, 1982	280	48	141	\$ 4,235.00
January, 1983	237	73	183	\$ 5,370.00
February, 1983	226	46	107	\$ 3,220.00
March, 1983	250	44	165	\$ 5,275.00
April, 1983	241	46	123	\$ 3,720.00
May, 1983	274	74	168	\$ 4,970.00
June, 1983	357	74	205	\$ 5,980.00
Fiscal Year Totals	4,148	744	2,361	\$70,360.00

TRANSPORTATION DIVISION COMPARATIVE ARREST REPORT

Fiscal Year	Regulatory Arrests	Amount in Regulatory Fines	Safety Inspections	Safety Arrests	Amount in Safety Fines	Total Arrests (Regulatory & Safety)	Total Amount in Fines (Regulatory & Safety)
1978-1979	3,884	\$190,027.75	6,509	3,462	\$103,027.00	7,346	\$233,054.75
1979-1980	3,780	\$124,633.00	3,913	2,683	\$ 81,093.00	6,463	\$205,726.00
1980-1981	5,152	\$172,854.00	4,666	4,430	\$132,392.25	9,582	\$305,246.25
1981-1982	4,603	\$160,913.75	5,035	4,422	\$131,480.75	9,638	\$292,394.50
1982-1983	4,253	\$145,585.00	4,148	2,361	\$ 70,360.00	6,614	\$215,945.00

INSURANCE DEPARTMENT

Section 58-23-10 through 58-23-60, Motor Vehicle Carrier Law of the State of South Carolina, South Carolina Code of Laws, 1976 as amended, under SubArticle VI, Sections 103-170 through 103-180 of the Rules and Regulations Pertaining to Motor Carriers, states that all for-hire intrastate motor carriers of persons or property who are under the jurisdiction of the South Carolina Public Service Commission, must obtain and keep current, on file with the Commission, Public Liability and Property Damage Insurance and Cargo Insurance in at least the minimum limits of liability as prescribed by the Commission.

All Interstate Commerce Commission regulated motor carriers must register with the Commission and also have evidence of Public Liability and Property Damage Insurance on file with the Commission before operating into or through the State of South Carolina.

Insurance filings are accepted only from those insurance companies licensed to do business in the State of South Carolina by the South Carolina Department of Insurance and only on forms as prescribed by the Commission.

The functions of the Insurance Department are to receive and accept insurance filings on these for-hire intrastate and interstate motor carriers. There are approximately four thousand five hundred (4,500) or more filings on intrastate motor carriers and approximately twenty-five thousand (25,000) filings on interstate motor carriers. The Insurance Department receives and reviews about twenty-five hundred (2,500) insurance filings or modifications of filings each month.

The Insurance Department notifies these regulated carriers and Inspectors in their respective districts, of an impending thirty (30) day notice of cancellation and if other coverage has not been filed within that time limit, a letter to cease operation is also sent to the motor carrier and Inspectors approximately five days prior to the cancellation date of the insurance.

Before any motor carrier may commence operating, insurance must be on file with the Commission and must be kept current in order to continue such operations. A motor carrier's authority may be revoked or cancelled by the Commission for failure of the motor carrier to keep insurance on file.

Before any license tags or identification stamps can be issued, the Insurance Department must check each application to see that the proper insurance is on file before releasing the tags or stamps.

LICENSING DEPARTMENT

Carriers operating within the State of South Carolina on an intrastate basis, and carriers based in South Carolina operating on an interstate basis have, over the years, purchased licenses and paid fees as indicated by the table below.

Statement Showing Receipt and Deposits to the Credit of the State Treasurer, Cost of Administration and Balance for Distribution to Cities and Towns During the Period July 1, 1982 thru June 30, 1983

PUBLIC SERVICE COMMISSION LICENSE TAGS ISSUED:

Class A Licenses	109	
Class B Licenses	2	
Class C Licenses	982	
Class D Licenses	218	
Class E Licenses	8,532	
Class F Licenses	<u>996</u>	
Total License Tags Issued	10,839	
TOTAL FEES (Net)		\$ 900,226.13
Receipts from S. C. Tax Commission		
(Motor Vehicle Registrations)		\$1,274,037.00
Total License and Registration Fees		<u>\$2,174,263.13</u>
Less Cost of Administration		<u>\$1,155,632.43</u>
Balance for Distribution to Cities and Towns		\$1,018,630.70

With the growth of the motor carrier industry in this State, together with the better enforcement of the Motor Carrier Law made possible by increased enforcement facilities, the work of this division has rapidly increased, as evidenced by revenue receipts as shown in the following, through the fiscal year 1962-1963. However, beginning in 1962 the General Assembly for three successive years, passed legislation which reduced license fees for Class D, E and F Certificate Holders by twenty-five percent per year. This reduction is shown in the revenue as collected since that time along with a portion of the motor vehicle registration fees collected by the South Carolina Tax Commission and credited to the Motor Transportation Fund beginning with the fiscal year 1962-1963.

March 10 through December 31, 1928	\$ 15,200.00
Calendar Year 1929	20,845.99
Calendar Year 1930	39,013.32
Calendar Year 1931	57,310.17
Calendar Year 1932	57,471.26
Calendar Year 1933	63,951.14
Calendar Year 1934	81,300.07
Fiscal Year 1934-1935	86,060.40
Fiscal Year 1935-1936	103,841.91
Fiscal Year 1936-1937	155,945.57
Fiscal Year 1937-1938	212,950.38
Fiscal Year 1938-1939	254,590.53
Fiscal Year 1939-1940	250,728.20
Fiscal Year 1940-1941	281,796.84
Fiscal Year 1941-1942	304,648.97
Fiscal Year 1942-1943	387,572.37
Fiscal Year 1943-1944	389,184.76
Fiscal Year 1944-1945	392,010.25
Fiscal Year 1945-1946	403,790.99
Fiscal Year 1946-1947	466,040.56
Fiscal Year 1947-1948	516,065.26
Fiscal Year 1948-1949	547,532.85
Fiscal Year 1949-1950	561,256.58
Fiscal Year 1950-1951	613,772.53
Fiscal Year 1951-1952	647,230.50
Fiscal Year 1952-1953	670,693.67
Fiscal Year 1953-1954	689,120.74
Fiscal Year 1954-1955	691,751.77
Fiscal Year 1955-1956	755,682.91
Fiscal Year 1956-1957	786,403.41

Fiscal Year 1957-1958	770,190.33
Fiscal Year 1958-1959	800,455.10
Fiscal Year 1959-1960	846,898.69
Fiscal Year 1960-1961	841,078.71
Fiscal Year 1961-1962	870,505.50
Fiscal Year 1962-1963	1,128,437.74
Fiscal Year 1963-1964	900,044.65
Fiscal Year 1964-1965	707,454.95
Fiscal Year 1965-1966	793,226.08
Fiscal Year 1966-1967	847,703.71
Fiscal Year 1967-1968	895,700.40
Fiscal Year 1968-1969	973,913.12
Fiscal Year 1969-1970	1,033,553.27
Fiscal Year 1970-1971	1,084,739.49
Fiscal Year 1971-1972	1,171,000.28
Fiscal Year 1972-1973	1,350,164.33
Fiscal Year 1973-1974	1,228,220.53
Fiscal Year 1974-1975	1,492,578.42
Fiscal Year 1975-1976	1,508,338.54
Fiscal Year 1976-1977	1,627,335.19
Fiscal Year 1977-1978	1,726,752.39
Fiscal Year 1978-1979	1,922,268.15
Fiscal Year 1979-1980	2,020,630.09
Fiscal Year 1980-1981	2,102,895.93
Fiscal Year 1981-1982	2,178,011.92
Fiscal Year 1982-1983	2,174,263.13

RATES, RAILS, & RAIL SAFETY DEPARTMENT

The Rates, Rails & Rail Safety Department handles and investigates applications and matters involving rates, fares, charges, practices, and facilities of the regulated transportation companies in South Carolina.

The Rates, Rails & Rail Safety Department supervises and maintains a current file of freight, passenger and express tariffs and makes analyses and studies necessary for the Commission's general supervision of the regulated transportation companies. All regulated transportation companies are required to file and receive approval by the Commission for tariffs setting forth all rates, charges, classification, rules, regulations and practices for South Carolina intrastate transportation. The tariff files contain approximately 2,800 current tariffs for which approximately 56,000 supplements and reissues are received annually.

All cases requiring a public hearing are handled on the Commission's Formal Docket. Such cases result from protests filed by interested parties against petitions or applications by the various regulated carriers seeking authority to discontinue or change an existing service, complaints or protests filed against existing or proposed rates, fares, charges or practices of such carriers, and investigations instituted by the Commission upon complaint or its own motion. Formal Docket cases concluded during the 1982-83 fiscal year are as follows:

Motor Carrier	<u>6</u>	
	6	Total Formal Docket Cases

In some cases matters may be settled or adjusted informally without the necessity of a public hearing, and are handled on the Commission's Informal Docket. Such cases generally involve discontinuance or abandonment of certain minor services or facilities which have become obsolete or for which little, if any, public need continues to exist, such as spur tracks, sidings, removal of old or unused depot buildings at non-agency stations and other like matters, where no protests nor objections are made by interested parties after due notice has been given. Informal Dockets concluded during the 1982-83 fiscal year are divided as follows:

Railroad	680	
Motor Vehicle	<u>400</u>	
	1,080	Total Informal Cases

RAILROAD COMPANIES OPERATING IN SOUTH CAROLINA
Year Ending December 31, 1982

Line Haul Companies	Principal Officers	Official Address
Clinchfield Railroad Company	R. D. Sanborn, President	Jacksonville, Florida
Columbia, Newberry & Laurens Railroad	Richard Spence, President	Jacksonville, Florida
Greenville & Northern Railway Co.	M. P. Silver, President	Boston, Massachusetts
Hampton & Branchville Railroad Co.	W. Norris Lightsey, President	Hampton, S. C.
Lancaster & Chester Railroad	J. B. Bethea, Jr., President	Lancaster, S. C.
Carolina & Northwestern Railroad	H. H. Hall, President	Washington, D. C.
Pickens Railroad Co.	Jane Gillespie, President	Pickens, S. C.
Seaboard System Railroad	Paul Funkhouse, President	Jacksonville, Florida
Southern Railway Co.	H. H. Hall, President	Washington, D. C.
Ware Shoals Railroad Co.	K. E. Wilber, President	Ware Shoals, S. C.
Terminal Companies		
Northern Charleston Terminal Co.	Henry R. Moore, President	Atlanta, Georgia

**RAILWAY OPERATING REVENUES
AND OPERATING EXPENSES
For Year Ending December 31, 1982**

Reporting Company	Operating Revenue	Operating Expenses
Carolina & Northwestern Railroad	44,594,000	32,419,000
Clinchfield Railroad	100,637,000	91,338,000
Columbia, Newberry & Laurens Railroad	6,041,803	4,661,768
Greenville & Northern Railway	229,678	428,401
Hampton & Branchville Railroad	855,716	478,079
Lancaster & Chester Railroad	1,628,395	1,472,396
Pickens Railroad	227,000	268,000
Seaboard System Railroad	1,191,311	1,176,918,000
Southern Railway	1,024,371	925,209
Ware Shoals Railroad	(121,398)	-0-

**RAIL INCOME
For Year Ending December 31, 1982**

Reporting Company	Net Railway Operating Income	Net Income After Fixed Charges & Other Deductions
Carolina & Northwestern Railroad	12,175,000	7,480,000
Clinchfield Railroad	9,299,000	11,326,000
Columbia, Newberry & Laurens Railroad	1,380,035	1,050,300
Greenville & Northern Railway	(199,723)	(195,175)
Hampton & Branchville Railroad	877,637	451,960
Lancaster & Chester Railroad	155,999	461,360
Pickens Railroad	(41,000)	(1,747,000)
Seaboard System Railroad	14,393,000	22,189,000
Southern Railway	99,162,000	78,780,000
Ware Shoals Railroad	79,215	42,051

The Rail Safety program was initiated to enforce the safety rules and regulations of the State of South Carolina. The program was certified by the Federal Railroad Administration in 1980 pursuant to the Federal Railroad Safety Act of 1970 (45U.S.C. 435 (d) and 49 C.F.R. 212.33). The program has decreased rail accidents in the State by implementation of various safety programs. The most notable improvements were in construction of road beds, addition of new cross ties, and 110 pound welded rail. The program consists of a Motor Power and Equipment Inspector, Operating Practice Inspector and a Track Inspector. The Motor Power and Equipment Inspector is responsible for the inspection and safety compliance of the thousands of pieces of rolling stock of the railroads. The Track Inspector is responsible for all phases of Track inspection and safety compliance for the 2730 miles of track in South Carolina. The Operating Practice Inspector is responsible for checking compliance with rules regarding operations by all railroad personnel. During the fiscal year 1982-1983, there were 10,290 equipment inspections, 1,931 turnout inspections, 440 record inspections, 31 crossing inspections, 1,410 derail inspections and 2,526 miles of track inspected. This resulted in 1,006 equipment violations and 421 track related violations. The total fines assessed was \$420,000.

**MILEAGE OF ROAD OPERATED IN
SOUTH CAROLINA
(Single or First Main Track)
Year Ending December 31, 1982**

Name of Railroad	Number of Miles
Carolina & Northwestern Railroad	53.00
Clinchfield Railroad	18.00
Columbia, Newberry & Laurens Railroad	94.00
Greenville & Northern Railway	14.67
Hampton & Branchville	21.35
Lancaster & Chester Railroad	28.99
Pickens Railroad	9.30
Seaboard System Railroad	1,610.00
Southern Railway	896.00
Ware Shoals Railroad	6.30
Total	2,730.28

**MILES OF ROAD AND YARD SWITCHING TRACKS
(ALL TRACKS)
Year Ending December 31, 1982**

TERMINAL COMPANIES

Name of Terminal Company	Number of Miles
North Charleston Terminal Company	<u>17.00</u>
Total	17.00

The Commission has jurisdiction over city bus transportation operated by the Duke Power Company in Anderson and Spartanburg, and the South Carolina Electric and Gas Company in Charleston and Columbia, South Carolina.

Shown below is a comparison of passengers transported for 1981 and 1982, which shows an decrease of 1.6% for this year.

	Passengers Transported	
	1981	1982
Duke Power Company		
Anderson	208,528	204,328
Spartanburg	<u>779,047</u>	<u>649,831</u>
Totals	<u>987,575</u>	<u>854,159</u>
South Carolina Electric & Gas Co.		
Columbia	6,588,909	6,548,458
Charleston	<u>6,001,223</u>	<u>5,961,468</u>
Totals	<u>12,590,132</u>	<u>12,509,926</u>
Combined Totals	13,577,707	13,364,085

REGISTRATION DEPARTMENT

Registration of Certificated and Exempt Commodity Interstate Motor Carriers (Public Law 89-170 — Section 58-23-640)

On April 16, 1971, The South Carolina Motor Vehicle Carrier Law was amended by adding Section 58-23-640 governing the operation of Interstate Carriers certificated by the Interstate Commerce Commission and Interstate exempt commodity carriers. Section 58-23-640 authorized the South Carolina Public Service Commission to promulgate rules and regulations pursuant to this Act. The Rules promulgated complied with the standards as recommended and approved by the National Association of Regulatory Utility Commissioners and the Interstate Commerce Commission.

Carriers coming under this category are charged a registration fee of \$25.00, with amendments to the authority as registered \$10.00. Mobile Home Transporters are charged one-half the amendment fee or \$5.00. All motor carriers operating into or through South Carolina under Section 58-23-640 must purchase an identification stamp at \$1.00 per vehicle.

Under the same Section, all exempt carriers operating into or through South Carolina must file a letter with this Commission setting forth their exemption. Fees are identical to those of Certificated Carriers. Funds derived from such fees and charges are retained by the Commission and expended by it to control and police illegal transportation and promote safety on the highways.

During the period of July 1, 1982 through June 30, 1983, 1,372 Certificated carriers registered their authority with this Commission. Prior registrants were 5,644 making a total of 7,016 Certificated carrier registrations. There were 1,068 registrants of additional authority with this Commission. For the same period 1,520 motor carriers registered letters of exemption. Prior registrants were 18,574 making a total of 20,094 registered Exempt Carriers.

Revenues from Certificated Carriers	\$445,124.00
Revenues from Exempt Carriers	\$ 58,900.00
Total Revenue from 7-1-82 through 6-30-83	\$504,024.00