

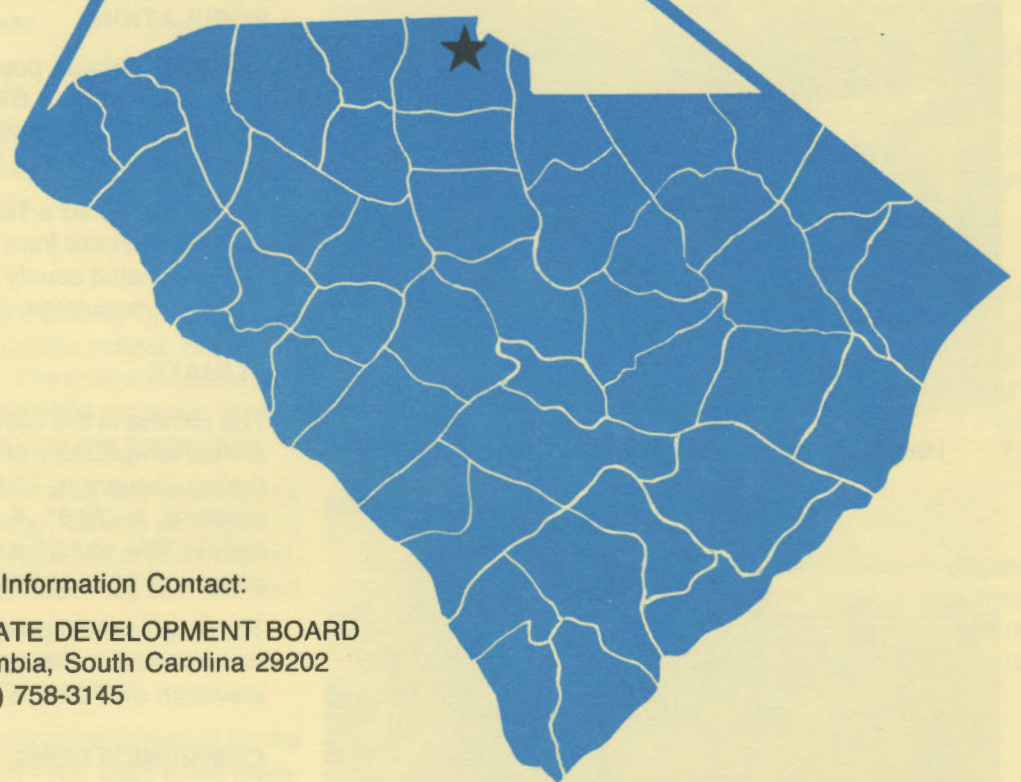
D4925
2.C54-2

CLOVER

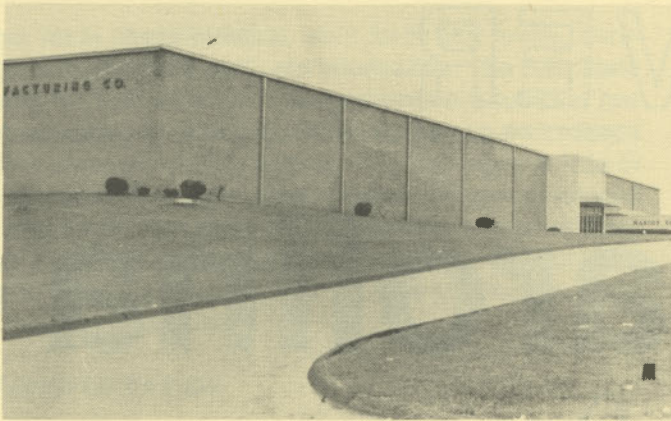
south carolina



S. C. STATE LIBRARY
FEB 13 1984
STATE DOCUMENTS



For Additional Information Contact:
SOUTH CAROLINA STATE DEVELOPMENT BOARD
P. O. Box 927, Columbia, South Carolina 29202
(803) 758-3145



Marion Yarns



Clover Presbyterian Church



Health Center and Magistrate's Court Building



Kinard Elementary School

LOCATION

As depicted on the cover, Clover is in the northern section of the state in York County. Charleston, South Carolina's busiest port, is 200 miles southeast. Columbia is 90 miles south and Greenville is 79 miles west. Clover is 241 miles northeast of Atlanta; 627 miles south of New York; and 2,764 miles east of San Francisco.



POPULATION

The 1980 census population of the city of Clover was 3,451. This was a 1.6% decrease from the 1970 population of 3,506. The population within a 15-mile radius is 153,102 and within a 30-mile radius is 880,243.

York County had a 1980 census population of 106,720, a 25.2% increase from the 1970 population of 85,216. The 1981 estimated county population is 109,300 and the 1990 projected population is 135,000.

CLIMATE

The climate in the Clover area is temperate with a mean annual temperature of 60.5° F. The average temperature during January is 42.1° F, while the average July temperature is 78.5° F. The average relative humidity daily is 76% at 1:00 a.m.; 83% at 7:00 a.m.; 54% at 1:00 p.m.; and 61% at 7:00 p.m.

The mean annual precipitation in the Clover area is 42.72 inches and the average growing season is 220 days. The elevation of Clover is 800 feet above sea level.

COMMUNICATIONS

The weekly *Clover Herald* is published in the community, and five dailies circulate in the area. Broadcast radio coverage for the community is provided by WBZK, which transmits on 1,150 kilohertz with 1,000 watts of power. Television reception is available from eight stations,

representing the three major networks. Telephone service is provided by the Southern Bell Telephone and Telegraph Company.

GOVERNMENT

The community has a mayor-council form of municipal government. The six city council members, including the mayor, are elected for four-year terms. The county has a council-manager form of government. The seven county council members are elected for four-year terms.

POLICE AND FIRE

The Clover Police Department has ten full-time police officers. The department operates three radio equipped patrol cars. The Clover Fire Department has 18 volunteer firemen who operate two pumper trucks. Clover's insurance rating is Class 8.

FINANCIAL INSTITUTIONS

Clover has two banks and one savings and loan association to serve the financial needs of the community. The banks have total assets of \$2.2 billion, while the savings and loan has assets of \$157 million.

HOTELS AND MOTELS

The community has one motel with a total of 8 overnight accommodations. Additional motels are located in York, eight miles from Clover, in Rock Hill, 21 miles away and in Gastonia, N.C., 12 miles away

CHURCHES

Clover has 18 Protestant churches. A Catholic church is located in York, eight miles away, and a Jewish house of worship is located in Gastonia, 12 miles away.

EDUCATION

Clover, which is included in York County District 2, has three elementary schools, one middle school, one junior high school and one high school. The student/teacher ratio is 19.1 to 1 with 146 teachers and 2906 students. Private schooling is available 12 miles from the community.

Higher education facilities for the area are provided by the York County Technical College, Clinton College and Winthrop College, all located in Rock Hill, 21 miles away. Gaston College is located in Gastonia, N.C., 12 miles from Clover.

MEDICAL SERVICES

Medical services for the community are provided by the 51-bed Divine Saviour Hospital in York, eight miles away. The Piedmont Medical Center in Rock Hill, 21 miles away, has 273 beds. Other medical facilities are located in Gastonia, N.C., 12 miles from Clover. The community has 3 privately-practicing medical doctors and 3 privately-practicing dentists.

RECREATION AND CIVIC FACILITIES

Recreation facilities in the community consist of three mini-playgrounds, a small park, football stadium, little league football and baseball, three school playgrounds and tennis courts. Lake Wylie, 10 miles away, provides public boat landings and water sports recreation facilities. Kings Mountain State Park provides facilities for fishing, boating, swimming, camping and picnicking. Local band concerts are held periodically at Kings Mountain. The Springlake Country Club has an 18-hole golf course and a swimming pool and tennis courts. Carwinds, 20 miles away, offers an amusement park and campground.

POWER

Electric power is available to the community and surrounding areas from Duke Power Company. Duke Power service is supplied to any industrial customer at utilization voltage from standard equipment without additional charge. Duke's industrial rate is among the lowest in the nation.

Duke Power Company representatives are available to assist industry in its economic application of electricity and in analyzing their electrical needs and usages.

FUELS

Natural gas is supplied by the York County Gas Authority.

WATER

The Town of Clover obtains its municipal water supply from deep wells. The system has a maximum capacity for 800,000 gpd and an average demand of 48,000 gallons per day. Treated water storage consists of 250,000 gallons in elevated storage and 300,000 gallons in ground storage.

Analysis of water supplied in the community:

Total solids	23 mg/L
Alkalinity	88 mg/L
Calcium	50 mg/L
Hardness	150 mg/L
Iron	.3 mg/L
pH	7.2

SEWER

Clover uses trickling filters and activated sludge to dispose of the community's wastewater. The two systems have a maximum daily capacity for 285,000 gallons and 100,000 gallons with a daily flow of 160,000 gallons and more than 100,000 gallons respectively.

LABOR

Because labor information may change in this area, a current labor availability report prepared and kept up to date by the S.C. State Development Board will be furnished to prospective manufacturers at their request. The comprehensive report will include sources of recruitable labor,

labor force characteristics, work force skill levels, earnings data and other pertinent information. The S.C. State Board for Technical and Comprehensive Education has the resources to recruit and train workers in accordance with a company's entry criteria. This training is at little or no cost to the employer. A lead time schedule is developed to coordinate recruiting, testing, selecting, and training. This assures that persons will be able to move from training to their respective jobs at the time the plant is ready for initial production.

TRANSPORTATION

Clover is served by one interstate highway, I-85 (13 miles), one United States highway and one South Carolina highway. The community is served by one railroad — the Carolina and Northwestern, a branch of the Southern Railway System. Clover is served by 31 authorized motor carriers, 3 of which have terminal facilities in Gastonia.

Freight Delivery Times:

To:	By Rail:	By Truck:
Atlanta	2 days	1 day
Boston	6 days	3 days
Chicago	6 days	3 days
Houston	9 days	4 days
New York	4 days	3 days
St. Louis	5 days	3 days
San Francisco	12 days	5 days

Charlotte's Douglas Municipal Airport, 20 miles away, offers regularly scheduled commercial airline service on Delta, Eastern, Piedmont, Southern, Ozark, U.S. Air and Atlantis. Private aircraft utilize the Gastonia Municipal Airport, nine miles away, which has a 3,500-foot paved and lighted runway. The Rock Hill Airport, 20 miles away, has a paved and lighted 5,000-foot runway. Services available at the two small airports are charter flights, hangars, RBn,

MAJOR EMPLOYERS

Name
American Thread Co.
Clover Knits, Inc.
Klear-Knit, Incorporated
Marion Yarns
Pharr Yarns
Siebe Norton Company

flight instruction, 100, 100LL and Jet A fuel, Unicom, Vortac, and major airframe and major powerplant repairs.

FOREIGN TRADE ZONE

A Foreign Trade Zone is located in Summerville, South Carolina, 25 miles from the Port of Charleston and 175 miles from the community. The Foreign Trade Zone allows manufacturers to store, manufacture, or process goods without paying U.S. Customs duties or worrying about quota compliance. This Foreign Trade Zone is served by a multimode transportation network which provides excellent accessibility to market areas.

TAXES

The assessment on industrial property in South Carolina is 10.5% of the market value. New industry is granted a five-year moratorium on general county taxes (with the exception of school taxes). The city tax rate is \$8.20 per \$100.00 of assessed value. The county rate is \$12.91 per \$100 of assessed value. The effective city tax rate (tax liability per \$100 of market value) is \$.86. The effective county rate is \$1.35. The state has no tax on a manufacturer's inventories, goods-in-process, raw materials or finished goods. Treatment facilities or equipment of manufacturing plants which control water or air pollution are exempt from all property taxation.

INDUSTRIAL SITES

Industrial sites are available in Clover with a wide range of geographic and topographic features. In all probability, a site that will meet the needs of most industries' requirements has been identified, catalogued, and entered into the State Development Board's Computerized Site Selection System. Detailed site information will be furnished upon request.

Product or Service	Employees
Yarn	251
Knit fabrics	65
Men's knit shirts	400
Yarn	180
Carpet yarn	545
Rubber gloves	110

