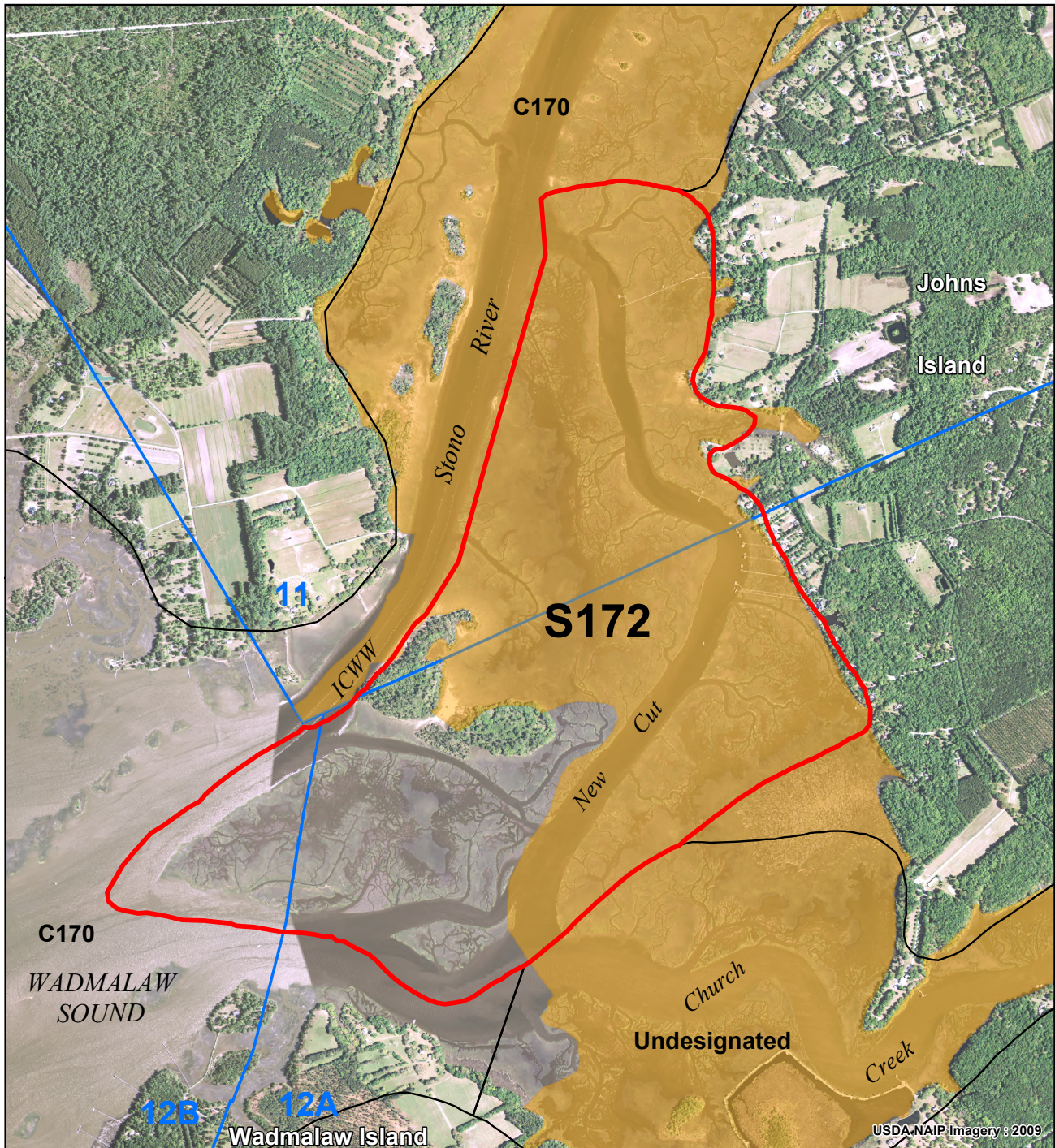


New Cut S172

S172 is within SCDHEC Shellfish Management Area 11, 12A, and 12B. These areas are subject to closure at any time. Please call (800)285-1618

SHELLFISH SEASON
2011 - 2012



Legend

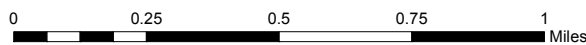
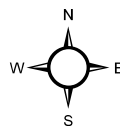
SHELLFISH HARVEST BOUNDARIES

- AREA OF INTEREST
- NEIGHBORING AREAS
C000 = COMMERCIAL CULTURE PERMIT
S000 = STATE SHELLFISH GROUND

- SHELLFISH MANAGEMENT AREAS (SCDHEC)

WATER QUALITY (SCDHEC)

- PROHIBITED
- RESTRICTED
- CONDITIONALLY APPROVED



Location: New Cut
County: Charleston

PRODUCED BY:
SOUTH CAROLINA DEPARTMENT OF NATURAL RESOURCES
OFFICE OF FISHERIES MANAGEMENT
SHELLFISH MANAGEMENT SECTION
08/2011

