

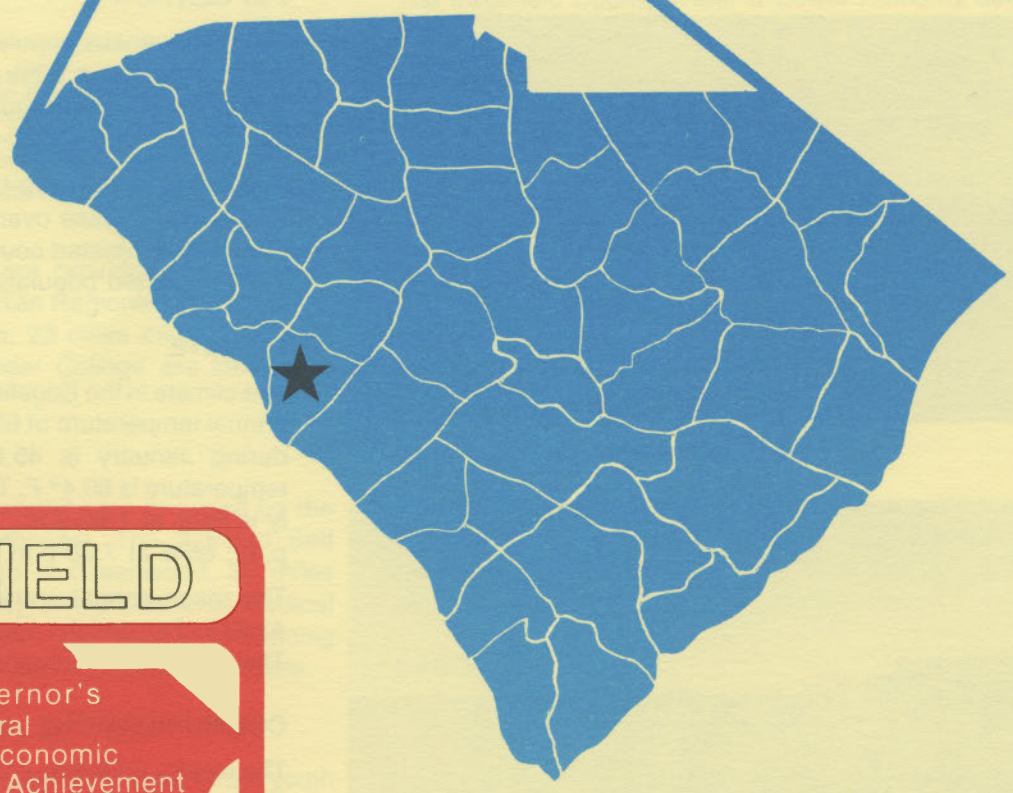
D 4925
2.E23
1984
Copy 1

EDGEFIELD

south carolina




S. C. STATE LIBRARY
JAN 25 1985
STATE DOCUMENTS



EDGEFIELD

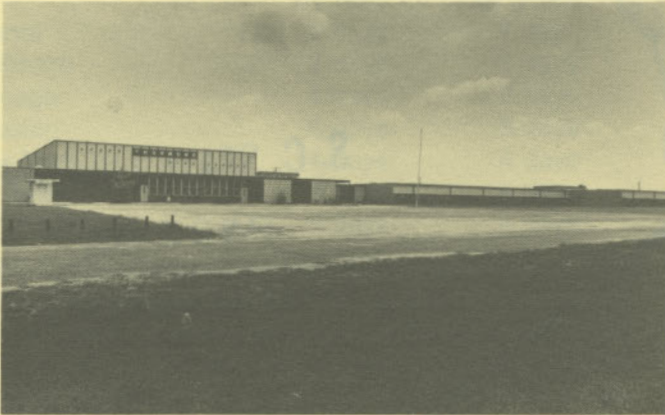
IS
A
GREAT
TOWN

Governor's
Rural
Economic
Achievement
Trophy

A red outline of the state of South Carolina, positioned behind the text of the Governor's Rural Economic Achievement Trophy.



Edgfield Municipal Building



Strom Thurmond High School



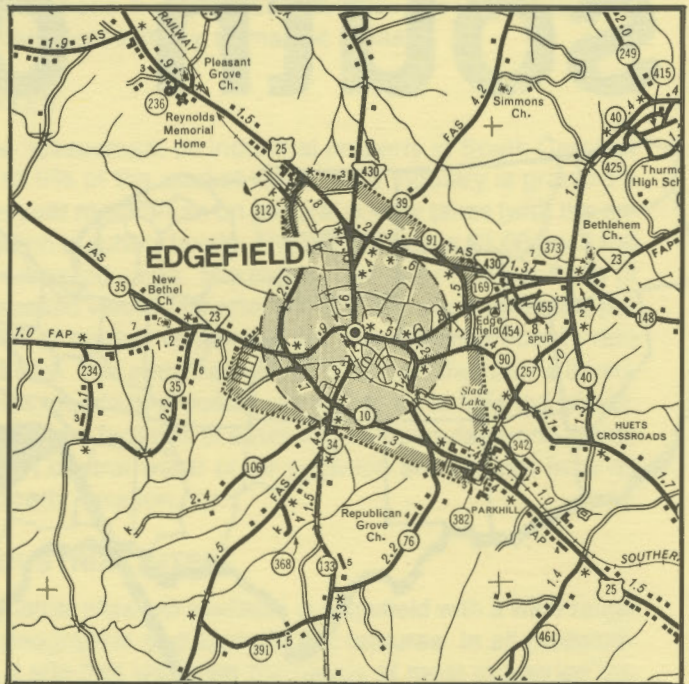
Pine Ridge Country Club



Carolina Production Enterprises

LOCATION

As depicted on the cover, Edgfield, seat of Edgfield County, is in the western section of the state. Charleston, South Carolina's busiest port, is 148 miles southeast. Columbia is 57 miles east and Greenville is 86 miles north. Edgfield is 165 miles east of Atlanta; 749 miles south of New York; and 2,688 miles east of San Francisco.



POPULATION

The 1980 census population of the city of Edgfield was 2,713. This was a 1.3% decrease from the 1970 population of 2,750. The population within a 15-mile radius is 32,739 and within a 30-mile radius is 318,891.

Edgfield County had a 1980 census population of 17,528, an 11.7% increase over the 1970 population of 15,692. The 1983 estimated county population is 18,037 and the 1990 projected population is 19,800.

CLIMATE

The climate in the Edgfield area is temperate with a mean annual temperature of 63.4° F. The average temperature during January is 45.8° F, while the average July temperature is 80.4° F. The average relative humidity daily is 84% at 1:00 a.m.; 87% at 7:00 a.m.; 52% at 1:00 p.m.; 66% at 7:00 p.m.

The mean annual precipitation in the Edgfield area is 42.63 inches and the average growing season is 246 days. The elevation of Edgfield is 530 feet above sea level.

COMMUNICATIONS

The weekly *Edgfield Advertiser* and the *Edgfield Citizen-News* are published in the community, and five dailies circulate in the area. Radio Station WJES-AM, located in Johnston, nine miles away, provides local broadcast coverage. Television reception in the community is available from six stations, representing the three major networks and educational television. Telephone service is provided by Southern Bell of BellSouth Corporation.

GOVERNMENT

The community has a mayor-council form of municipal government. The six city council members and mayor are elected for four-year terms. Edgefield County is governed locally by a council-administrator form of government. The four council members are elected for two-year terms.

POLICE AND FIRE

The Edgefield Police Department has six full-time police officers. The department operates four radio equipped patrol cars. The Edgefield Fire Department has 28 volunteer firemen who operate two pumper trucks. Edgefield's insurance rating is Class 6.

FINANCIAL INSTITUTIONS

Edgefield has two banks and one savings and loan association to serve the financial needs of the community. The banks have total assets of \$3.7 billion, while the savings and loan has assets of \$277 million.

HOTELS AND MOTELS

The community has three motels and one hotel with over 50 overnight accommodations.

CHURCHES

Edgefield has six Protestant churches and one Catholic church located in the community. A Jewish house of worship is located in Augusta, 28 miles away.

EDUCATION

Edgefield, which is included in Edgefield County Schools, has one elementary school. The student/teacher ratio is 16.9 to 1, with 1,050 students and 62 teachers. A high school is available in nearby Johnston and private schooling is available in the area.

Higher education facilities are provided by the Aiken Technical College and the Aiken Regional Campus of the University of South Carolina, 23 miles away. Piedmont Technical College and Lander College are located in Greenwood, 32 miles away.

MEDICAL SERVICES

Medical services in the community are provided by the 40-bed Edgefield County Hospital. The 375-bed Self Memorial Hospital is located in Greenwood, 32 miles away. Augusta, 28 miles away, offers additional medical facilities. The community has eight privately-practicing medical doctors and two privately-practicing dentists.

RECREATION AND CIVIC FACILITIES

Recreation facilities in the community consist of two youth centers, a swimming pool, and several tennis courts. The Pine Ridge Country Club, four miles away, has an 18-hole championship golf course, pool, tennis courts and fishing lakes. Nearby Clarks Hill Reservoir and several public recreation areas offer camping, fishing, boating, swimming and picnic facilities. The Sumter National Forest pro-

vides a wide variety of wild game and fowl, as well as areas for camping, swimming, picnicking and fishing.

POWER

Electric power is available to the community and surrounding areas from South Carolina Electric & Gas Company and Aiken Electric Cooperative. During 1985, SCE&G projects a system reserve of 38.2% with an existing generating capacity of 3,959 megawatts. SCE&G is committed to having sufficient reserves to meet the immediate and future energy requirements of its service area. Being a major exporter of electric power, SCE&G maintains inter-tie connections with five neighboring utilities.

Electric power for Aiken Electric Cooperative is supplied by Central Electric Power Cooperative and South Carolina Public Service Authority. The generation capacity of plants in operation or under construction totals over 3,000 megawatts with 73% produced from coal. Inter-tie connections are maintained with neighboring power supplies.

FUELS

Natural gas is supplied by South Carolina Electric & Gas Company. SCE&G representatives are available to assist and advise industry on matters relating to natural gas for industrial applications.

WATER

The Edgefield County Water & Sewer Authority obtains the water supply from the Savannah River. Capacity of the system is 4.0 million gallons per day and usage averages 1.25 million gallons per day. Treated water storage consists of 1.2 million gallons in elevated storage, and 1.3 million gallons in ground storage.

Analysis of water supplied in the community:

Total solids	36 mg/L
Alkalinity	17 mg/L
Calcium	10 mg/L
Hardness	31 mg/L
Iron	.05 mg/L
pH	6.9

SEWER

Edgefield is served by the Edgefield County Water and Sewer Authority's Brooks Avenue Plant. The plant has a maximum capacity of 400,000 gallons per day and an average daily flow of 385,000 gallons.

LABOR

Because labor information may change in this area, a current labor availability report prepared and kept up to date by the S. C. State Development Board will be furnished to prospective manufacturers at their request. The comprehensive report will include sources of recruitable labor, labor force characteristics, work force skill levels, earnings data and other pertinent information. The S. C. State Board for Technical and Comprehensive Education has the resources to recruit and train workers in accordance

with a company's entry criteria. This training is at little or no cost to the employer. A lead-time schedule is developed to coordinate recruiting, testing, selecting, and training. This assures that persons will be able to move from training to their respective jobs at the time the plant is ready for initial production.

TRANSPORTATION

Edgefield is served by one interstate highway, I-20 (15 miles), one United States highway and two South Carolina highways. The community is served by the Norfolk Southern Railroad Corporation. Edgefield is served by 35 authorized motor carriers.

Freight Delivery Times:

To:	By Rail:	By Truck:
Atlanta	2 days	1 day
Baltimore	3 days	3 days
Chicago	4 days	3 days
Houston	6 days	3 days
New York	4 days	4 days
St. Louis	4 days	4 days
San Francisco	6 days	5 days

The Columbia Metropolitan Airport, 50 miles from the community, offers regularly scheduled commercial airline service on Delta, Eastern, Bankair, Piedmont and United. Delta, Atlantic Southeast, Piedmont and Atlantis service Augusta, 28 miles from Edgefield. Private aircraft utilize the Aiken Municipal Airport, 23 miles away, which has a 5,000-foot lighted and paved runway and a 3,800-foot paved runway. Services offered include RBn, major airframe and major powerplant repairs, 100LL and Jet A fuel, Unicom and Vortac.

MAJOR EMPLOYERS

Name	Product or Service	Employees
The Crest Mfg. Co.	Auto accessories	110
Edgefield Yarns, Inc.	Combed cotton yarns	150
Carolina Production Enterprises	Electric heaters	104
Star Fibers, Inc.	Processed man-made fibers	209
Tranter Mfg. Co. — Flexoplate Div.	Cooling radiators for transformers	125

FOREIGN TRADE ZONE

A Foreign Trade Zone is located in Summerville, South Carolina, 25 miles from the Port of Charleston and 123 miles from the community. The Foreign Trade Zone allows manufacturers to store, manufacture, or process goods without paying U.S. Customs duties or worrying about quota compliance. This Foreign Trade Zone is served by a multimode transportation network which provides excellent accessibility to market areas.

TAXES

The assessment on industrial property in South Carolina is 10.5% of the market value. New industry is granted a five-year moratorium on general county taxes (with the exception of school taxes). The city tax rate is \$8.00 per \$100 of assessed value. The county rate is \$11.99 per \$100 of assessed value. The effective city tax rate (tax liability per \$100 of market value) is \$.84. The effective county rate is \$1.26. The state has no tax on a manufacturer's inventories, goods-in-process, raw materials or finished goods. Treatment facilities or equipment of manufacturing plants which control water or air pollution are exempt from all property taxation.

INDUSTRIAL SITES

Industrial sites are available in Edgefield with a wide range of geographic and topographic features. In all probability, a site that will meet the needs of most industries' requirements has been identified, catalogued, and entered into the State Development Board's Computerized Site Selection System. Detailed site information is available and will be furnished upon request.

For Additional Information Contact:

SOUTH CAROLINA STATE DEVELOPMENT BOARD
 P. O. Box 927, Columbia, South Carolina 29202
 (803) 758-3145

