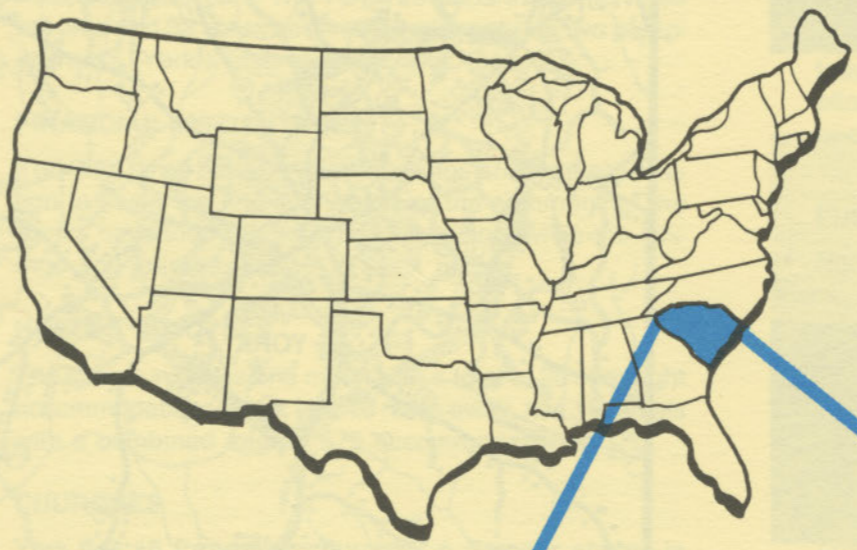


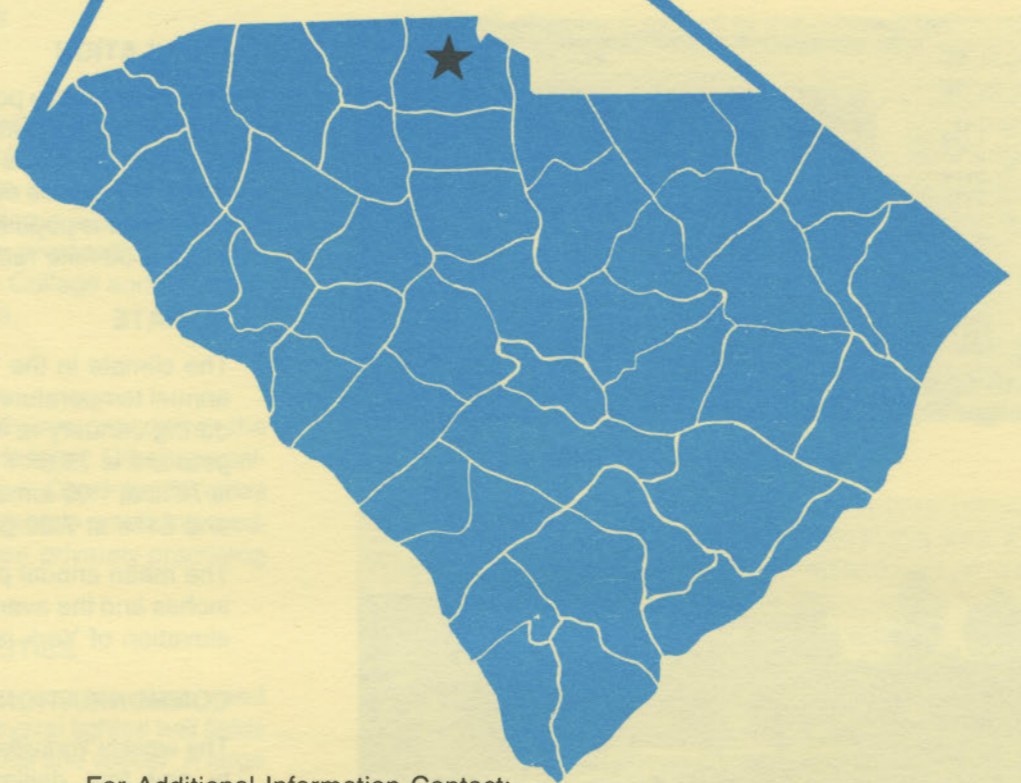
D4925  
2.Y56

YORK

# south carolina



S. C. STATE LIBRARY  
JAN 28 1983  
STATE DOCUMENTS



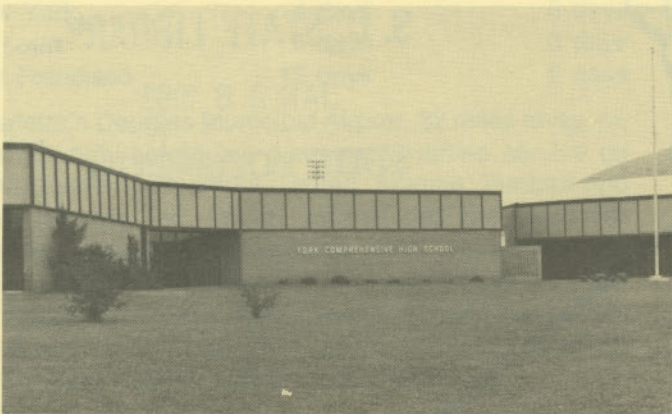
For Additional Information Contact:

SOUTH CAROLINA STATE DEVELOPMENT BOARD  
P. O. Box 927, Columbia, South Carolina 29202  
(803) 758-3145





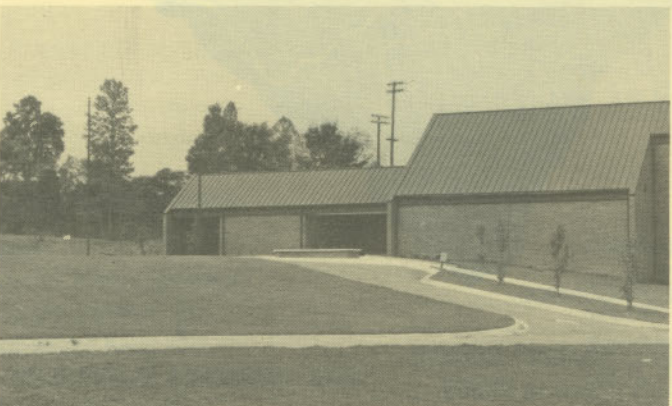
York City Hall



York Comprehensive High School



York County Courthouse



York Recreation Center

## LOCATION

As depicted on the cover, York, seat of York County, is in the northern section of the state. Charleston, South Carolina's busiest port, is 187 miles southeast. Columbia is 77 miles south and Greenville is 79 miles west. York is 231 miles northeast of Atlanta; 639 miles south of New York; and 2,754 miles east of San Francisco.



## POPULATION

The 1980 census population of the city of York was 6,412. This was a 26.2% increase from the 1970 census of 5,081. York County had a 1980 census population of 106,720, a 25.2% increase over the 1970 population of 85,216. The 1980 census population within a 15-mile radius is 94,383, while a 30-mile radius encompasses 646,242 people.

## CLIMATE

The climate in the York area is temperate with a mean annual temperature of 60.5° F. The average temperature during January is 42.1° F, while the average July temperature is 78.5° F. The average relative humidity daily is 76% at 1:00 a.m.; 83% at 7:00 a.m.; 54% at 1:00 p.m.; and 61% at 7:00 p.m.

The mean annual precipitation in the York area is 46.68 inches and the average growing season is 220 days. The elevation of York is 758 feet above sea level.

## COMMUNICATIONS

The weekly *Yorkville Enquirer* is published in the community and four dailies circulate in the area. Broadcast coverage for the community is provided by WBZK Radio Station, which transmits on 980 kilohertz with 1,000 watts of power. Television reception in the community is available from eight stations, representing the three major networks. Telephone service in the community is provided by the Southern Bell Telephone Company.



## GOVERNMENT

The community has a council-manager form of municipal government. The six city councilmen and the mayor are elected for two-year terms. The county has a council-manager form of government. The seven member county council is elected for two-year terms.

## POLICE AND FIRE

The York Police Department has 13 full-time and one part-time police officers. The department operates three radio equipped patrol cars. The York Fire Department has three full-time and 32 volunteer firemen who operate two pump-trucks. York's insurance rating is Class 7.

## FINANCIAL INSTITUTIONS

York has three banks and one savings and loan association to serve the financial needs of the community. The banks have total assets of \$551.5 million, while the savings and loan has assets of \$131 million.

## HOTELS & MOTELS

The community has one motel with a total of 26 overnight accommodations. Rock Hill, 16 miles away, has 10 motels with a combined total of 675 accommodations.

## CHURCHES

York has 16 Protestant churches. A Catholic church is located in the city, and a Jewish house of worship is located in Charlotte, 32 miles away.

## EDUCATION

York, which is included in York District #1, has two elementary schools; one middle school; and one high school. The student/teacher ratio is 20.7 to 1, with 154 teachers and 3,190 students. Private schooling is available. Higher education facilities for the area are provided by the York County Technical College, Clinton College and Winthrop College — all located in Rock Hill.

## MEDICAL SERVICES

Medical services for the community are provided in the city by the 51-bed Divine Saviour Hospital. Other specialized medical treatment facilities are in Charlotte, 32 miles away. The community has seven privately-practicing medical doctors, one surgeon and three privately-practicing dentists.

## RECREATION AND CIVIC FACILITIES

York has a well-rounded recreation program, supervised by a full-time recreation director. Several lighted ball fields are used for football, baseball, softball and soccer. A large new recreation center and two schools provide space for exercise classes, basketball and volleyball. The city has a large swimming pool with adjoining lighted tennis courts. Public and private tennis courts meet tournament specifications. Spring Lake Country Club offers members and guests a championship caliber 18 hole golf course, driving range, tennis courts and swimming pool. A public golf

course is a 20 minute drive from York. Lake Wylie, 10 miles away, offers public boat landings, fishing, camping and water sports recreation facilities. The Tar Sand Hunting Preserve is located eight miles away. Cultural presentations are available at Rock Hill, 16 miles away.

## POWER

Electric power is supplied by Duke Power Company. Service is supplied to any industrial customer at utilization voltage from standard Duke Power Company equipment without additional charge. Duke's industrial rate is among the lowest in the nation. Duke Power Company representatives are available to assist industry in its economic application of electricity and in analyzing their electrical needs and usages.

## FUELS

Natural gas is supplied by York County Gas Authority.

## WATER

The community obtains its municipal water supply from one 75-acre impounded lake and two small lakes totaling 15 acres. The system is capable of supplying water at a maximum rate of 2,400,000 gallons per day, with a daily demand of 950,000 gallons per day. Treated water storage consists of 850,000 gallons in elevated tanks, and one 300,000 gallon clear well.

Analysis of water supplied in the community:

Total solids	82 mg/L
Alkalinity	40 mg/L
Calcium	6 mg/L
Hardness	26mg/L
Iron	.1 mg/L
pH	8.3

## SEWER

York uses an aerated plant with an accentuated base sludge with a daily capacity of 1.5 million gallons of wastewater. The average daily flow is 700,000 gpd.

## LABOR

Because labor information may change in this area, a current labor availability report prepared and kept up to date by the S. C. State Development Board will be furnished to prospective manufacturers at their request. The comprehensive report will include sources of recruitable labor, labor force characteristics, work force skill levels, earnings data and other pertinent information. The S. C. State Board for Technical and Comprehensive Education has the resources to recruit and train workers in accordance with a company's entry criteria. This training is at little or no cost to the employer. A lead-time schedule is developed to coordinate recruiting, testing, selecting, and training. This assures that persons will be able to move from training to their respective jobs at the time the plant is ready for initial production.



## TRANSPORTATION

York is served by two interstate highways, I-85 (25 miles) and I-77 (15 miles), one United States Highway, and three South Carolina Highways. The community is served by one railroad, the Carolina and Northwestern, a subsidiary of the Southern Railway System. York has 32 authorized motor carriers, two of which have terminal facilities in the community.

### Freight Delivery Times:

To:	By Rail:	By Truck:
Atlanta	2 days	1 day
Boston	6 days	3 days
Chicago	6 days	3 days
Houston	9 days	3 days
New York	4 days	3 days
St. Louis	5 days	3 days
San Francisco	12 days	5 days

Charlotte's Douglas Municipal Airport, 32 miles away, offers regularly scheduled commercial airline service on Delta, Eastern, Piedmont, United, Atlantis, Sunbird and Altair Airlines, Inc. Private aircraft use the Rock Hill Municipal Airport, 12 miles away, which has a 5,000-foot paved and lighted runway. Services available at the Rock Hill Airport are charter flights, hangars, flight instruction, Jet A and 100 LL fuel, RBn, major airframe and major power plant repairs, Unicom and Vortac.

## FOREIGN TRADE ZONES

There are two Foreign Trade Zones located in South Carolina, one located in Charleston, 187 miles away, and

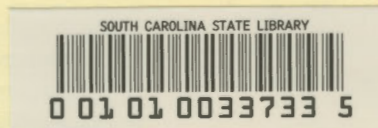
the other located at the Greenville/Spartanburg Jetport, 79 miles away. These Foreign Trade Zones allow manufacturers to store, manufacture or process goods without paying U. S. Customs duties or worrying about quota compliance. Both Foreign Trade Zones are served by a multi-mode transportation network which provides excellent accessibility to market areas.

## TAXES

The assessment on industrial property in South Carolina is 10.5% of the market value. New industry is granted a five-year moratorium on general county taxes (with the exception of school taxes). The city tax rate is \$10.00 per \$100 of assessed value. The county rate is \$19.48 per \$100 of assessed value. The effective city tax rate (tax liability per \$100 of market value) is \$1.05. The effective county rate is \$2.05. The state has no tax on a manufacturer's inventories, goods-in-process, raw materials or finished goods. Treatment facilities or equipment of manufacturing plants which control water or air pollution are exempt from all property taxation.

## INDUSTRIAL SITES

Industrial sites are available in York with a wide range of geographic and topographic features. In all probability, a site that will meet the needs of most industries' requirements has been identified, catalogued, and entered into the State Development Board's Computerized Site Selection System. Detailed site information is available and will be furnished upon request.



## MAJOR EMPLOYERS

Name	Product or Service	Employees
Cannon Mills Company	Terry Towels	1,175
Sullivan-Carson, Inc.	Woven Fabrics	125
Edgewater Mfg. Co.	Seamless Rolled Rings	75
Carolina Filters, Champion Labs	Oil & Air Filters	125
Jones and Lamson, Waterbury-Ferrell	Optical Comparators	200
Rockwell International	Truck Axles	100