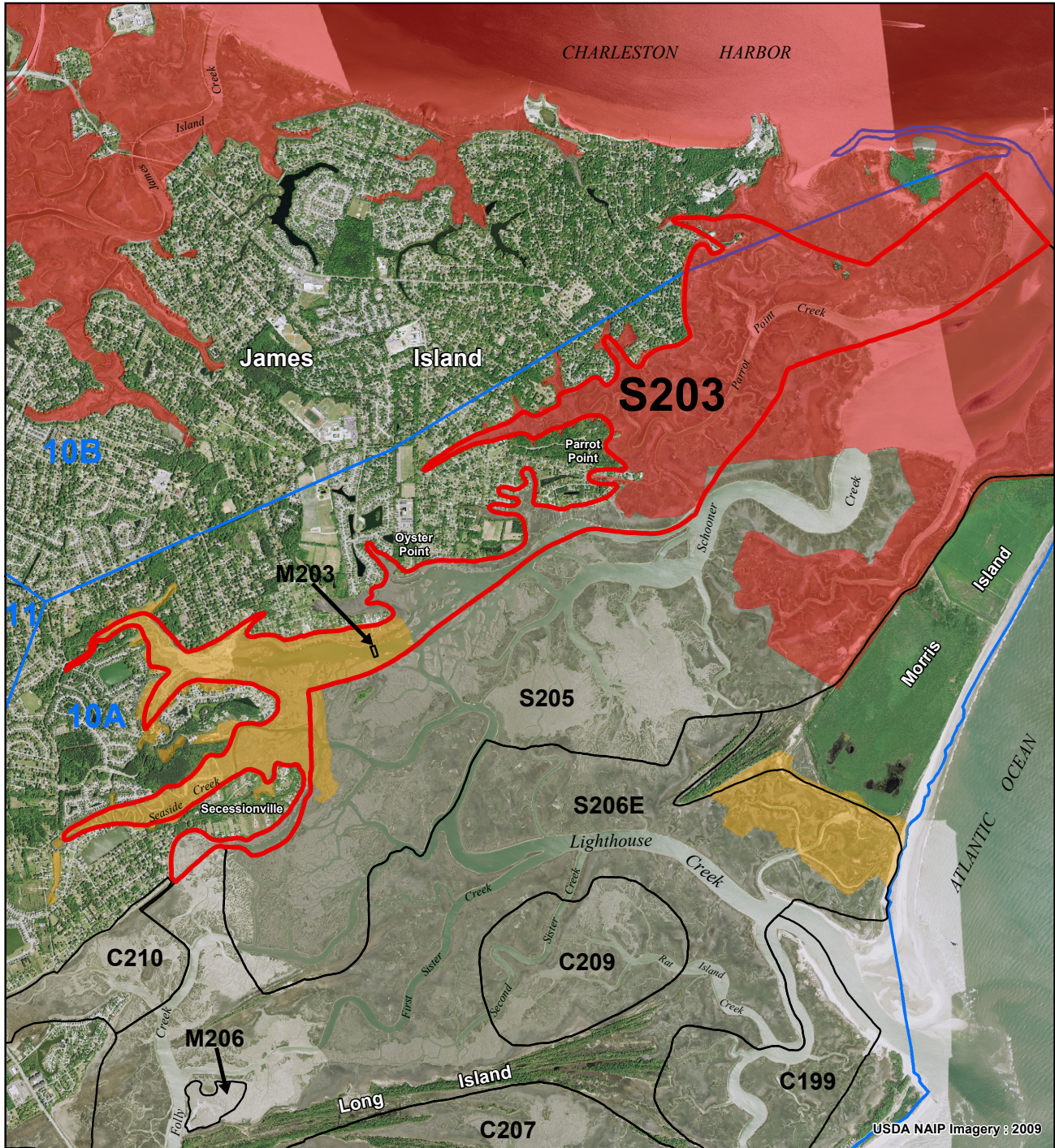


Clark Sound S203

S203 is within SCDHEC Shellfish Management Areas 10A and 10B. These areas are subject to closure at any time. Please call (800)285-1618

SHELLFISH SEASON
2011 - 2012



Legend

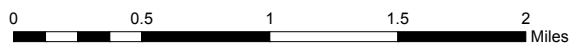
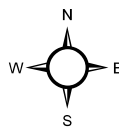
SHELLFISH HARVEST BOUNDARIES

- AREA OF INTEREST
- NEIGHBORING AREAS
- C000 = COMMERCIAL CULTURE PERMIT
- M000 = MARICULTURE PERMIT
- S000 = STATE SHELLFISH GROUND

- SHELLFISH MANAGEMENT AREAS (SCDHEC)

WATER QUALITY (SCDHEC)

- PROHIBITED
- RESTRICTED
- CONDITIONALLY APPROVED



Location: Upper Clark Sound
County: Charleston



PRODUCED BY:
SOUTH CAROLINA DEPARTMENT OF NATURAL RESOURCES
OFFICE OF FISHERIES MANAGEMENT
SHELLFISH MANAGEMENT SECTION
08/2011