

HISTORIC SITE TOURS

Thursday - Monday
11am, 1pm, & 3pm
\$10 for adults, \$6 for
seniors, \$5 for children
6-16. Children five and
under are free.

For more information on
programs and group tours,
please contact the park.

PARK STAFF

PARK MANAGER
Chelsea Stutz

PARK INTERPRETER
Ashley Rust

CURATOR
Jordan Stenger

MAINTENANCE RANGER
Craig Norris

ASSISTANT PARK RANGERS
Lauren Jackson
Matthew Morrow
Nora Phillips
Courtney Wilson

PARK UPDATE

Please plan your trip with regard to
the weather forecast. Our structures
do not have climate control, so if it's
warm outside it's warm in our
buildings! If you visit, please dress
for the weather as there is also a
portion of the tour outside.

If you have questions about our tours
or would like to schedule a large
group, please give us a call!

REDCLIFFE PLANTATION
181 REDCLIFFE ROAD
BEECH ISLAND, SC 29842
(803) 827 1473

VOLUME 19, ISSUE 9

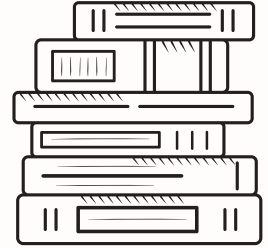
APRIL 2024

REDCLIFFE

SOUTHERN TIMES

Simply Bookish!

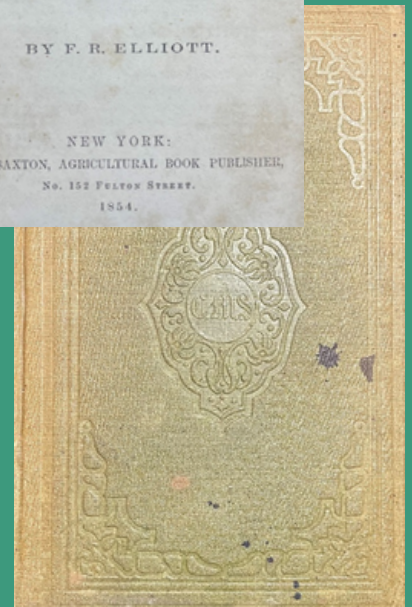
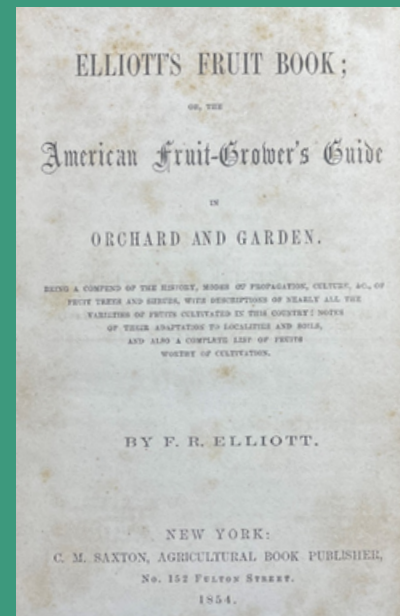
Redcliffe has the largest collection in State Park
Service, and over half is made up of books!
Over 2,000 books, three centuries, and
numerous family members are represented in
the collection. Let's take a look at a few and see
how four generations of the Hammond family
are represented in the library.



A Book that James Henry Hammond Used: Elliot's Fruit Book

Although James Henry
Hammond started the
library at Redcliffe and
certainly owned several of
the books still in the
collection today, many of
the books were added by
later generations of the
Hammond family.
However, there is one
book in particular that is
especially relevant to
Hammond.

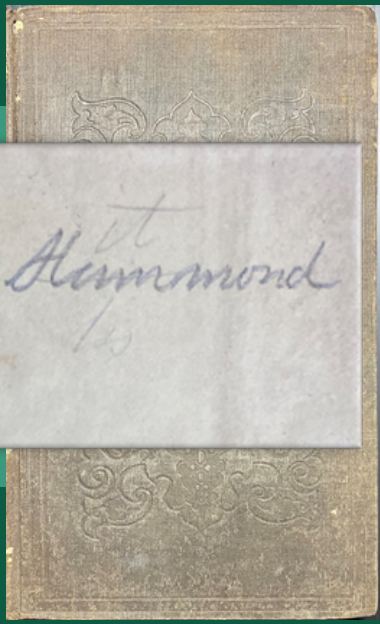
His copy of *Elliott's Fruit
Book*, was a guide for
growing fruit trees and
managing orchards.
Helpfully, it included a list
of fruiting trees and vines
suitable for cultivation. It
was published in 1858,
during the development of
Redcliffe into an
experimental agriculture
site. Hammond likely saw
his goal of turning
Redcliffe into a successful
orchard and vineyard as a
real possibility based on
the contents of this book.



A Book that Emily Cumming Used:

Floral Biography

An interest in plants continues with a book owned by Emily Cumming Hammond, the second generation to live at Redcliffe. Given to Emily by her mother Julia, the book *Floral Biography; Or Chapters on Flowers*, takes a different approach to plants. Instead of writing about the plants themselves, it focuses on what the flowers represent and any memories associated with them. This book truly reflects a popular trend of the Victorian Era, being literate in the language of flowers.




Emily C Hammond
185

A Book that Katherine Hammond Used:

Poems

While books on agriculture and plants are certainly favored by several generations of the Hammond family, another genre makes up a good portion of the collection, poetry. Katherine Hammond Billings owned this copy by William Cullen Bryant titled simply, *Poems*. It was given to her by her mother Emily in 1889, and with Bryant's popularity as a poet, Katherine likely enjoyed this book just as many others did in the 19th century.

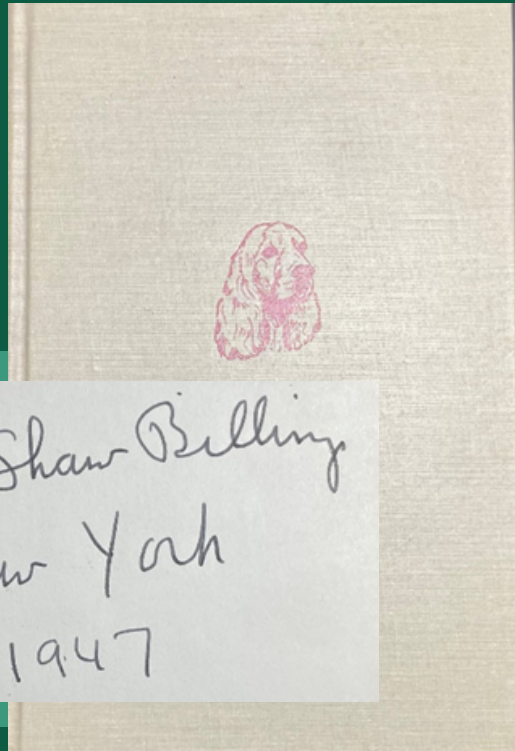


Katherine J Hammond
From Her Mother
Redcliffe
Vt
Sp 24th 1889

A Book that John Shaw Billings III Used:

Training Your Spaniel

Redcliffe's fourth and final owner John Shaw Billings moved permanently to Redcliffe in 1954, and brought with him a love of reading. While he too shared a love of poems like his mother Katherine, he also read books that were meant to help his everyday life. One book in particular, *Training Your Spaniel*, he purchased in 1947 not long after a new addition was added to his family. Lucky the spaniel was a beloved pet, but judging by the presence of this book in the collection, John and Frederica needed some help training Lucky!

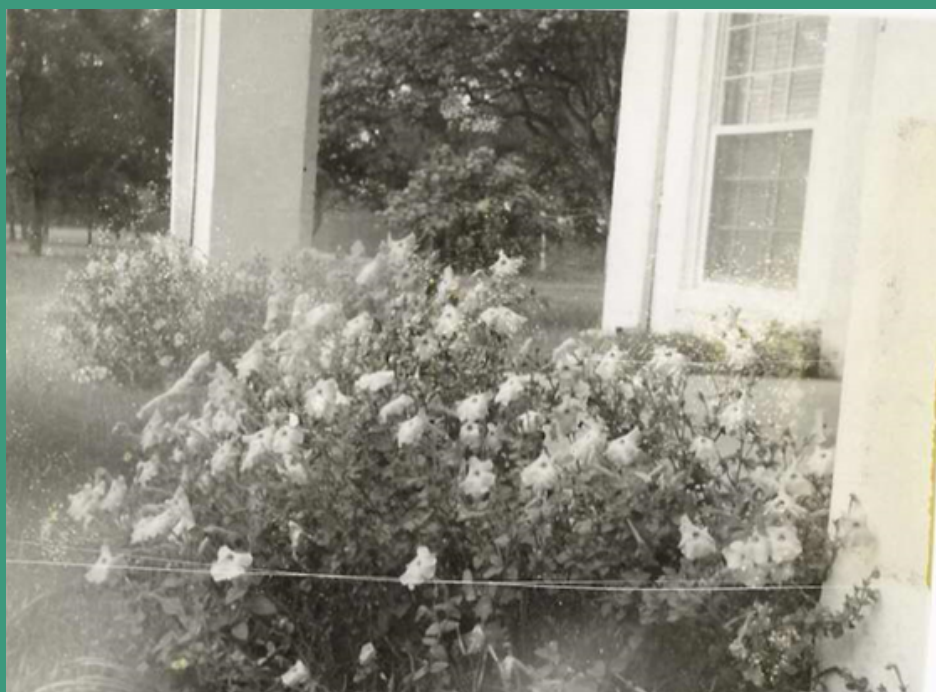


John Shaw Billings
New York
1947

We hope you have enjoyed this tour of the Redcliffe library!

ARTIFACT FLOWER OF THE MONTH

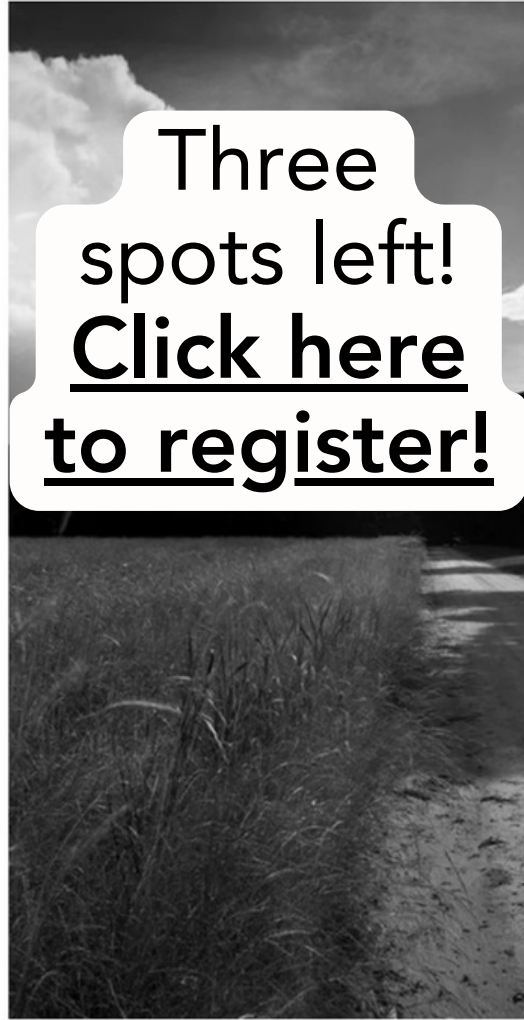
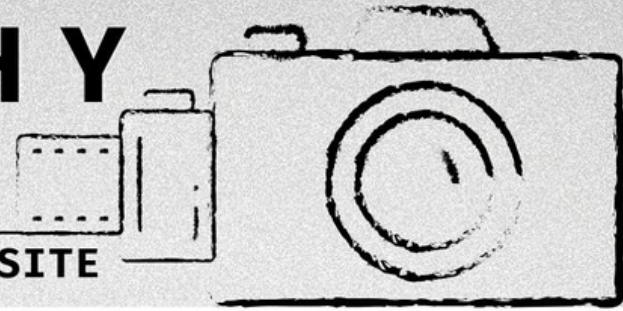
Spring has sprung! For many people that means more time spent in the garden preparing flowerbeds and vegetables for the summer growing season. At Redcliffe, Frederica loved growing flowers and these were her petunias photographed in April, 1956. The same petunias can be seen today, reseeding themselves year after year. Happy Spring!



Fun Facts: Petunias originated in South America. They are in the nightshade family, the same family of plants that includes potatoes, tomatoes, and tobacco. The name petunia comes from a French take on the Tupi-Guarani word “pétun,” which means tobacco. Other words you may know that originate from this South American language are jaguar, piranha, and ipecac.

PHOTOGRAPHY WORKSHOP

REDCLIFFE PLANTATION STATE HISTORIC SITE



Three
spots left!
[Click here](#)
[to register!](#)

IMAGES ©MARK ALBERTIN @ ALBERTINFILMPHOTOGRAPHY.COM

SATURDAY & SUNDAY, APRIL 20-21

9AM - 5PM

Join film photographer Mark Albertin at Redcliffe Plantation to learn how to use analog cameras. This workshop is a two-day offering with all supplies and instruction provided by Mark. Saturday will be spent at Redcliffe with instruction on how to use film cameras and techniques for successful photos followed by a site exploration to practice photography skills on the structures and environment at Redcliffe. Sunday's portion of this workshop will be held at Mark's photo developing work room in Augusta, GA. All participants will leave with improved photography skills, knowledge of how to take and process film photography, and a developed 8x10 photograph from their exploration of Redcliffe. Registration Required. Space is very limited! \$150 per person. Adults only. 9am-5pm each day.

