

MARLBORO COUNTY

D 4925
2.m16-2
1985
copy 1

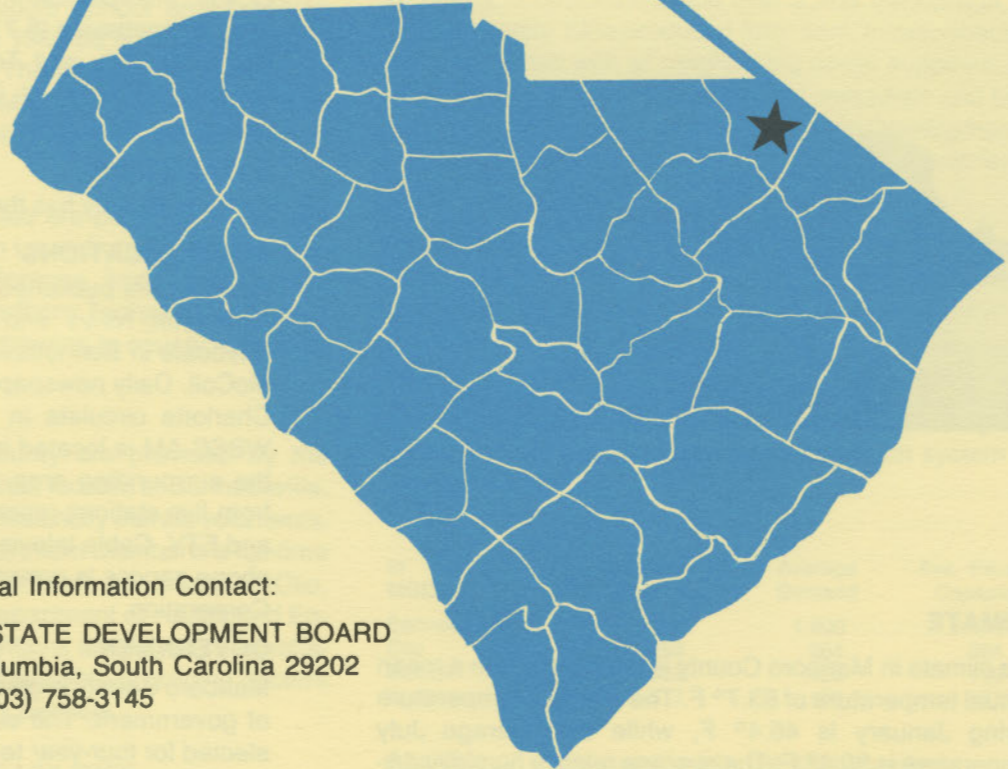
south carolina



S. C. STATE LIBRARY

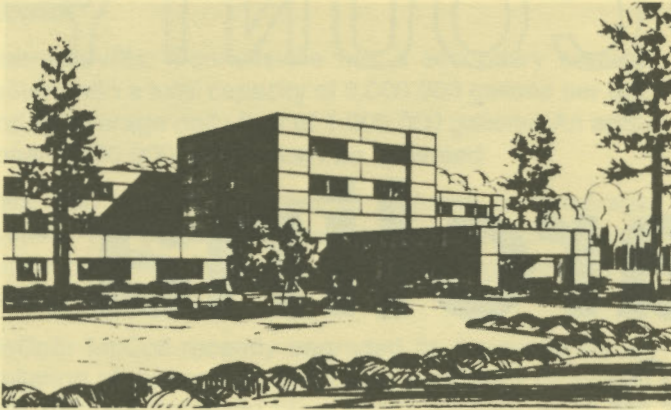
MAR 14 1986

STATE DOCUMENTS



For Additional Information Contact:

SOUTH CAROLINA STATE DEVELOPMENT BOARD
P. O. Box 927, Columbia, South Carolina 29202
(803) 758-3145



Marlboro Park Hospital



Chesterfield-Marlboro Technical College



Marlboro Country Club

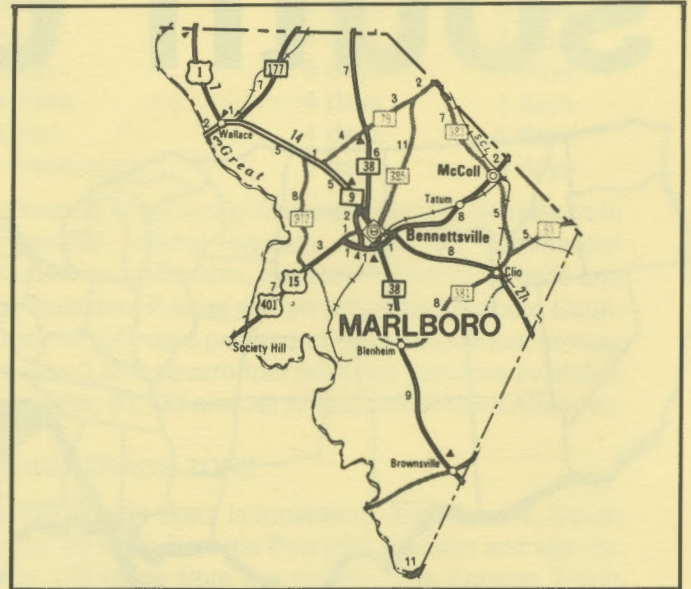
CLIMATE

The climate in Marlboro County is temperate with a mean annual temperature of 63.7° F. The average temperature during January is 46.4° F, while the average July temperature is 80.4° F. The average relative humidity daily is 84% at 1:00 a.m.; 84% at 7:00 a.m.; 57% at 1:00 p.m.; 74% at 7:00 p.m.

The mean annual precipitation in the county is 53.59 inches and the average growing season is 216 days. The elevation above sea level for the communities in the county ranges from 157 feet in Bennetttsville to 185 feet in McColl.

LOCATION

Marlboro County is located in the northeastern section of the state and forms the boundary line with North Carolina on the north and northeast. Bennetttsville, the county seat and largest town in the county, is 99 miles from Columbia and 90 miles from Charlotte, North Carolina.



POPULATION

Marlboro County had a 1980 census population of 31,634 which was a 16.5% increase over the 1970 population of 27,151. Incorporated towns in Marlboro County in 1980 were Bennetttsville (8,774), Blenheim (202), Clio (1,031), McColl (2,677), and Tatum (101). The 1985 estimated county population is 32,900 and the 2010 projected population is 38,500.

GREAT TOWN

Marlboro County has the GREAT TOWN of Bennetttsville.

COMMUNICATIONS

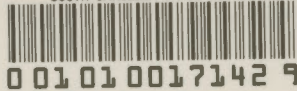
Newspapers published in the county include the weekly *Fine Print News* and twice weekly *Marlboro Herald-Advocate* in Bennetttsville; and the weekly *Messenger* in McColl. Daily newspapers from Columbia, Florence and Charlotte circulate in the communities. Radio station WBSC-AM is located in Bennetttsville and is received in the surrounding area. Television reception is available from five stations representing the three major networks and ETV. Cable television service is also available. Telephone service is provided by Southern Bell of BellSouth Corporation.

GOVERNMENT

Marlboro County is governed by a council-supervisor form of government. The eight members and supervisor are elected for four-year terms. The incorporated municipalities are each governed by their own councils.

LAW ENFORCEMENT

The county area is under the jurisdiction of the sheriff and ten deputies. Bennetttsville, Clio and McColl each have an independent police force. A communications system ties in all enforcement agencies in the county and towns.



FIRE

Marlboro County has seven separate fire departments. Bennettsville, Blenheim, Clio City, Clio Rural, McColl, Wallace and Brightsville, served by volunteers, except in Bennettsville, which is served by volunteers and full-time firemen. These departments have reciprocal agreements for mutual assistance in case of need. Insurance classifications range from 4-8.

FINANCIAL INSTITUTIONS

There are three banks and two savings and loans in Bennettsville, one bank in McColl, and one bank in Clio, to serve the financial needs of the communities. The banks have total assets of \$5.6 billion, while the savings and loans have assets of \$853 million.

HOTELS AND MOTELS

Bennettsville has three motels with a total of 116 overnight accommodations.

CHURCHES

There are 23 churches in Bennettsville and ten in McColl representing most of the major religious faiths, including Baptist, Methodist, Presbyterian, Mormon, Episcopal, Church of God, Holiness and Catholic. A synagogue is located in Hamlet, North Carolina, 18 miles away.

EDUCATION

Marlboro County is a single education district with 11 elementary schools, one middle school and five high schools. Total enrollment in 1985-86 is 7,486 students, with a teaching staff of 428. The student/teacher ratio is 17.5 to 1. A private school, Marlboro Vocational School and the Child Development Center are located in Bennettsville.

Higher education opportunities are provided by St. Andrews Presbyterian College in Laurinburg, North Carolina, Francis Marion College in Florence, and Coker College in Hartsville. Chesterfield-Marlboro Technical College in Cheraw also offers technical training to county residents.

MEDICAL SERVICES

Medical services for the county are provided by the 111-bed Marlboro Park Hospital, located in Bennettsville. Local rescue squads are professionally trained volunteers. Marlboro County Health Department maintains a full-time office in Bennettsville, and part-time operations in Clio, Blenheim and McColl. The Department of Health and Environmental Control also maintains an office in Bennettsville. Marlboro County has 20 privately-practicing doctors and eight privately-practicing dentists.

RECREATION AND CIVIC FACILITIES

Marlboro County Recreation Department plans and develops activities for the entire county. It sponsors sports leagues, clinics, classes and other events. Lake Wallace, a 500-acre man-made lake, located in Bennettsville, provides swimming, boating, fishing, and other family recrea-

tional facilities. Hunters can enjoy dove shooting, duck hunting and abundant deer, quail, and small game. Two country clubs provide 9-hole golf courses, while world famous Pinehurst is only an hour's drive, and the Grand Strand courses are less than two hours distance. Athletic entertainment is provided by Lindsay Park and two additional parks.

POWER

Electric power is available to the community and surrounding areas from Carolina Power & Light Company (CP&L) and Marlboro Electric Cooperative. CP&L has firm generation capacity of 8000 megawatts and forecasts sufficient reserves to accommodate industrial growth in its service area. Economical power from nuclear energy accounts for a major portion of CP&L's generation and serves to keep the company's rates below the national average. Usually CP&L will install, at no cost to the customer, the necessary equipment to supply the electrical requirements. Alternative rate schedules are available to the industrial customer with the most economical rate for a specific application determined by the characteristics of the user's consumption.

The city of Bennettsville purchases electricity from CP&L for resale to residential, commercial and small industrial customers in the city area.

Electric power for Marlboro Electric Cooperative is supplied by Central Electric Power Cooperative and South Carolina Public Service Authority. The generation capacity of plants in operation totals over 2,764 megawatts with approximately 73% produced from coal. Interconnections are maintained with all neighboring power suppliers. Sufficient reserves are available to meet immediate and future industrial power requirements. Economic Development Incentive Rates are available for qualifying industries.

FUELS

Natural gas is purchased from Carolina Pipeline Company by the City of Bennettsville for resale in the city area.

WATER

The water systems in Marlboro County serve specific areas and are supplied by deep wells. Each system has storage capacity.

In MGD	Design Capacity	Average Demand	Ave. Excess Capacity
Bennettsville	4.000	1.800	2.200
Clio	.288	.264	.024
McColl	.562	.423	.139
Wallace	.317	.150	.167

Analysis of water supplied to the communities:

(mg/L)	Ben.	Clio	McColl	Wallace
Ttl. solids	N/A	22.0	180.0	54.0
Alkalinity	41.0	3.0	144.0	2.0
Calcium	0.9	2.1	1.9	0.6
Hardness	7.0	10.0	10.0	14.0
Iron	0.07	0.4	0.2	0.1
pH	7.2	5.2	9.2	4.8

SEWER

Bennettsville: Bennettsville has a secondary sewage system with a total capacity of 3,000,000 gallons per day and an average daily flow of 1,000,000 gallons. An additional 1,000,000 gallons can be activated.

Clio: Clio is in the process of updating its sewerage system. The predominant soil permits the utilization of septic tanks for industries without a large volume of sewage discharge.

McColl: McColl recently upgraded its sewerage by installation of an aeration plant with a capacity of 40,000 gpd, chlorine treatment plant with a capacity of 15,000 gpd and an oxidation pond with a capacity of 280,000 gpd. The oxidation pond has an excess capacity of 180,000 gpd. The aeration plant has an excess capacity of 25,000 gpd.

LABOR

A current labor availability report will be furnished to prospective manufacturers at their request. The comprehensive report will include sources of recruitable labor, labor force characteristics, work force skill levels, earnings data and other pertinent information. The South Carolina State Board for Technical and Comprehensive Education has the resources to recruit and train workers in accordance with a company's entry criteria. This training is at little or no cost to the employer. A lead time schedule is developed to coordinate recruiting, testing, selecting, and training. This assures that persons will be able to move from training to their respective jobs at the time the plant is ready for initial production.

INDUSTRIAL SITES

Industrial sites are available in the county with a wide range of geographic and topographic features. In all probability, a site that will meet the needs of most industries' requirements has been identified, catalogued and entered into the State Development Board's Computerized Site Selection System. Detailed site information is available and will be furnished upon request.

TRANSPORTATION

Marlboro County is served by two U.S. highways and nine South Carolina highways. Interstate I-95 crosses the southern tip of the county and is 21 miles from Bennetts-

MAJOR EMPLOYERS

Name	Location	Product or Service	Employees
Becker Sand & Gravel Co.	Bennettsville	Sand & gravel	57
Emerson Electric Co.	Bennettsville	Electric products	350
Hanes Hosiery	Bennettsville	Hosiery	473
Mohasco Corp. — Oak River Mill	Bennettsville	Carpet yarn	588
J.P. Stevens & Co., Inc. (2 plants)	Wallace	Fabrics	757
United Technologies, Inc. (2 plants)	Bennettsville	Wire assemblies	804

ville. I-20, via I-95, is an additional 20 miles. The county is served by the Seaboard System Railroad. There are 40 authorized motor carriers serving the communities of the county.

Freight Delivery Times:

To:	By Rail:	By Truck:
Atlanta	2 days	1 day
Baltimore	3 days	3 days
Chicago	4 days	3 days
Houston	6 days	3 days
New York	4 days	4 days
St. Louis	4 days	4 days
San Francisco	6 days	5 days

The Florence City-County Municipal Airport, 38 miles from Bennettsville, offers regularly scheduled commercial airline service on Eastern, Henson/Piedmont, Atlantis and Trans Southern. Private aircraft utilize the Marlboro County Airport which has a paved and lighted 5,000-foot runway and a new 3,500-square-foot terminal. Services available include RBn; 80,100 and Jet A fuel; Unicom and Abvortac.

FOREIGN TRADE ZONE

A Foreign Trade Zone is located in Summerville, South Carolina, 25 miles from the Port of Charleston and approximately 173 miles from the county. The Foreign Trade Zone allows manufacturers to store, manufacture, or process goods without paying U.S. Customs duties or worrying about quota compliance. This Foreign Trade Zone is served by a multimode transportation network which provides excellent accessibility to market areas.

TAXES

The assessment on industrial property in South Carolina is 10.5% of the fair market value. New industry is granted a five-year moratorium on ordinary county taxes, with the exception of school taxes. The county tax rate is \$13.10 per \$100 of assessed value, an effective rate of \$1.38 per \$100 of market value. The community tax rates and effective rates per \$100 of value are: Bennettsville \$7.40 and \$.78, Blenheim \$4.00 and \$.42, Clio \$7.00 and \$.74, McColl \$10.00 and \$1.05, and Tatum \$2.00 and \$.21. The state has no tax on a manufacturer's inventories, goods-in-process, raw materials or finished goods. Treatment facilities or equipment of manufacturing plants which control water or air pollution are exempt from all property taxation.