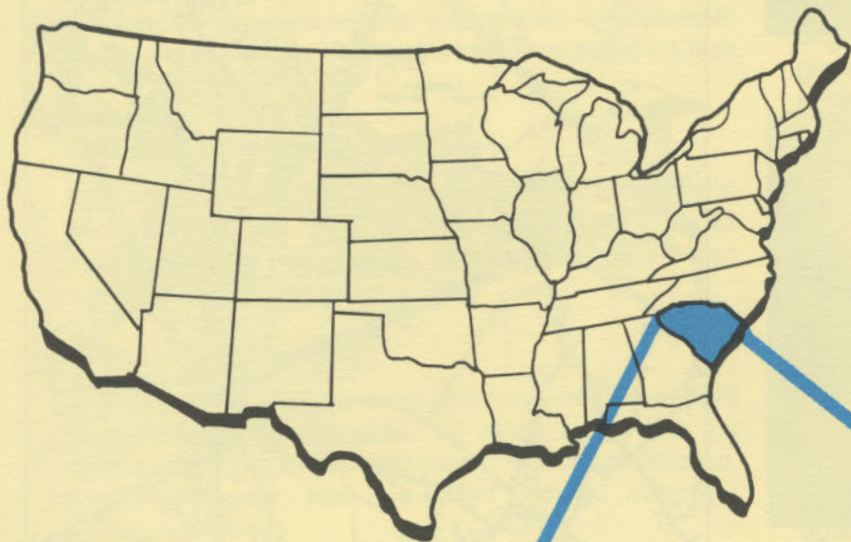


D4925
2.B16
1985
Copy 1

BARNWELL

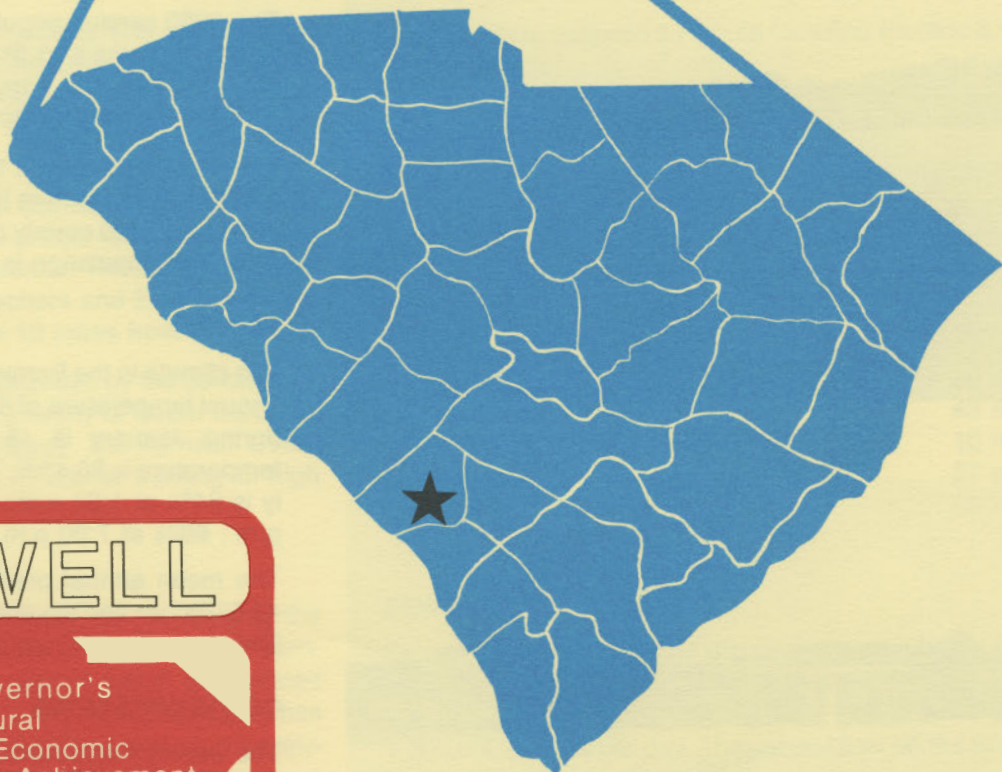
south carolina

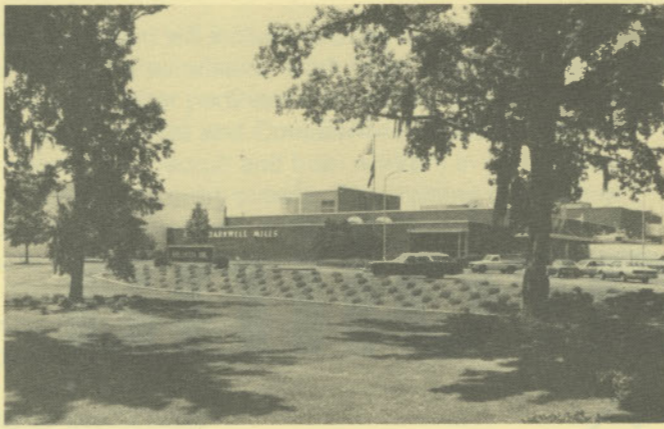


S. C. STATE LIBRARY

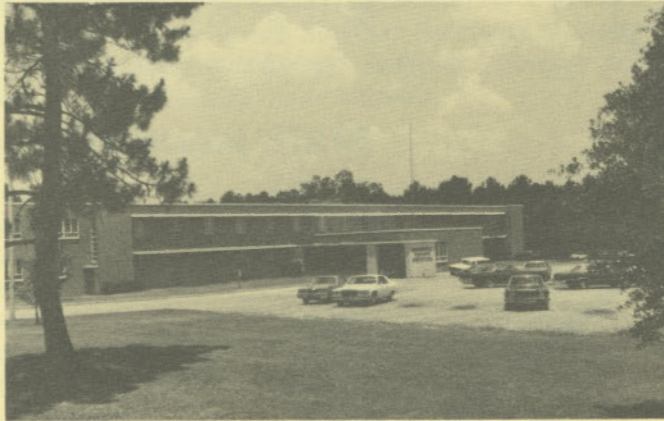
SEP 24 1985

STATE DOCUMENTS





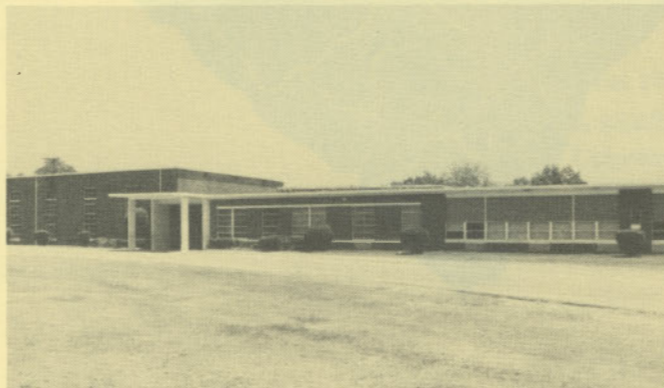
Milliken & Co. — Barnwell Mill



Barnwell County Hospital



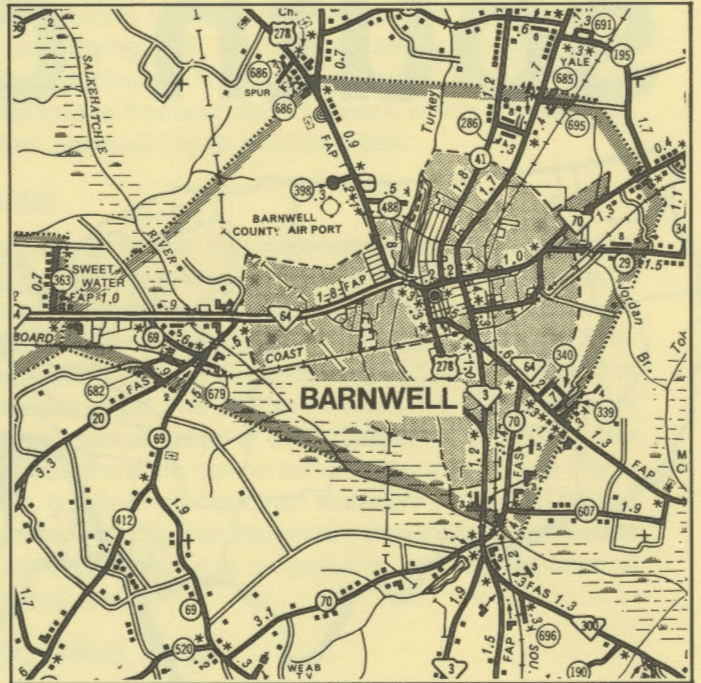
Lake Edgar Brown



Barnwell Elementary School

LOCATION

As depicted on the cover, Barnwell, seat of Barnwell County, is in the southwestern section of the state. Charleston, South Carolina's busiest port, is 99 miles east. Columbia is 59 miles north and Greenville is 143 miles northwest. Barnwell is 189 miles east of Atlanta; 754 miles south of New York; and 2,729 miles east of San Francisco.



POPULATION

The 1980 census population of the city of Barnwell was 5,572. This was a 25.5% increase from the 1970 population of 4,439. The population within a 15-mile radius is 31,928 and within a 30-mile radius is 116,276.

Barnwell County had a 1980 census population of 19,868, a 15.7% increase from the 1970 population of 17,176. The 1985 estimated county population is 21,300 and the 1990 projected population is 23,200.

CLIMATE

The climate in the Barnwell area is temperate with a mean annual temperature of 63.4° F. The average temperature during January is 45.8° F, while the average July temperature is 80.4° F. The average relative humidity daily is 84% at 1:00 a.m.; 87% at 7:00 a.m.; 52% at 1:00 p.m.; 66% at 7:00 p.m.

The mean annual precipitation in the Barnwell area is 42.63 inches and the average growing season is 237 days. The elevation of Barnwell is 187 feet above sea level.

COMMUNICATIONS

The weekly *People-Sentinel* is published in the city, and three large dailies circulate in the area. WBAW-AM/FM provides local radio coverage. Television reception is available from five stations, representing the three major networks. An educational television station is located in the community. Home cable television offers 13 channels. Telephone service is provided by Southern Bell of BellSouth Corporation.

GOVERNMENT

The community has a council form of municipal government. The six city council members and the mayor are elected for four-year terms. Barnwell County is governed locally by a five-member county council, whose members are elected for four-year terms.

POLICE AND FIRE

The Barnwell Police Department has 11 full-time police officers. The department operates six radio equipped patrol cars. The Barnwell Fire Department has two full-time and 25 volunteer firemen who operate three pumper trucks and one tanker. Barnwell's insurance rating is Class 7.

FINANCIAL INSTITUTIONS

Barnwell has three banks and one savings and loan to serve the financial needs of the community. The banks have total assets of \$5.3 billion, while the savings and loan has assets of \$323 million.

HOTELS AND MOTELS

The community has one motel with a total of 16 overnight accommodations. Allendale, 17 miles away, has six motels with a total of over 350 rooms. The city of Williston, nine miles away, has one motel with 30 overnight accommodations.

CHURCHES

Barnwell has 16 Protestant churches and one Catholic church located in the city. A Jewish house of worship is located in Aiken, 35 miles away.

EDUCATION

Barnwell, which is included in Barnwell District 45, has one elementary school, one middle school, one high school, and one development center. The student/teacher ratio is 17.8 to 1, with 134 teachers and 2,383 students. Private schooling is available 10 miles from Barnwell.

Higher education facilities are provided by the Salkehatchie Regional Campus of the University of South Carolina, located in Allendale, 17 miles away. The Barnwell County Vocational Center provides vocational training for high school students and adults.

MEDICAL SERVICES

Medical services for the community are provided by the 61-bed Barnwell County Hospital and the 40-bed Barnwell County Nursing Home, both of which are located within the corporate limits of the city. The community has five privately-practicing medical doctors and six privately-practicing dentists.

RECREATION AND CIVIC FACILITIES

Barnwell has a full-time recreational director. Recreation facilities consist of an 18-hole golf course, lighted tennis and basketball courts, several baseball fields and playgrounds and a city park. Lake Edgar Brown, located

in the city, provides for fishing, boating, picnicking and water skiing. The Barnwell State Park, seven miles away, has public fishing, swimming, nature trails, picnicking, camping, and cabins for rent. Deer, quail, dove and rabbit abound throughout the county for the hunting enthusiast; good fishing is also available in the Barnwell area.



POWER

Electric power is available to the community and surrounding areas from South Carolina Electric & Gas Company and Edisto Electric Cooperative. During 1985, SCE&G projects a system reserve of 38.2% with an existing generating capacity of 3,959 megawatts. SCE&G is committed to having sufficient reserves to meet the immediate and future energy requirements of its service area. Being a major exporter of electric power, SCE&G maintains inter-tie connections with five neighboring utilities.

Electric power for Edisto Electric Cooperative is supplied by Central Electric Power Cooperative and South Carolina Public Service Authority. The generation capacity of plants in operation or under construction totals over 3,200 megawatts with approximately 73% produced from coal. Interconnections are maintained with all neighboring power suppliers. Sufficient reserves are available to meet immediate and future industrial power requirements. Economic Development Incentive Rates are available for qualifying industries.

FUELS

Natural gas is supplied by South Carolina Electric & Gas Company.

WATER

The community obtains its municipal water supply from 11 deep wells. The system is capable of supplying water at a maximum rate of 4.75 million gallons per day, with an average daily demand of 4.0 million gallons. Water storage consists of 425,000 gallons in elevated storage.

Analysis of water supplied in the community:

Total solids	80 mg/L
Alkalinity	43 mg/L
Calcium	10 mg/L
Hardness	27 mg/L
Iron	.05 mg/L
pH	6.6

SEWER

Barnwell's treated sewage disposal system utilizes trickling filters with digester, clarifiers and sedimentation basins. The system has a design flow capacity for 1,000,000 gallons per day. The current flow on the system is 660,000 gallons per day.

LABOR

Because labor information may change in this area, a current labor availability report prepared and kept up to date by the S. C. State Development Board will be furnished to prospective manufacturers at their request. The com-

prehensive report will include sources of recruitable labor, labor force characteristics, work force skill levels, earnings data and other pertinent information. The S. C. State Board for Technical and Comprehensive Education has the resources to recruit and train workers in accordance with a company's entry criteria. This training is at little or no cost to the employer. A lead-time schedule is developed to coordinate recruiting, testing, selecting, and training. This assures that persons will be able to move from training to their respective jobs at the time the plant is ready for initial production.

TRANSPORTATION

Barnwell is served by one United States highway and three South Carolina highways. The community is served by two railroads: The Norfolk Southern Railroad Corporation and the Seaboard System Railroad. Barnwell is served by 36 authorized motor carriers.

Freight Delivery Times:

To:	By Rail:	By Truck:
Atlanta	2 days	1 day
Baltimore	3 days	3 days
Chicago	4 days	3 days
Houston	6 days	3 days
New York	4 days	4 days
St. Louis	4 days	4 days
San Francisco	6 days	5 days

The Columbia Metropolitan Airport, 53 miles away, offers regularly scheduled commercial airline service on American, Delta, Eastern, People Express, United, Bankair, and Piedmont. Private aircraft utilize the Barnwell County Airport, one mile away, which has a paved and lighted runway of 5,118 feet and a paved runway of 5,272 feet. Services available at the Barnwell County Air-

port are flight instruction, hangars, tiedowns, Unicom, Vortac, RBn, and 100LL and jet fuel.

FOREIGN TRADE ZONE

A Foreign Trade Zone is located in Summerville, South Carolina, 25 miles from the Port of Charleston and 74 miles from the community. The Foreign Trade Zone allows manufacturers to store, manufacture or process goods without paying U.S. Customs duties or worrying about quota compliance. This Foreign Trade Zone is served by a multimode transportation network which provides excellent accessibility to market areas.

TAXES

The assessment on industrial property in South Carolina is 10.5% of the market value. New industry is granted a five-year moratorium on general county taxes (with the exception of school taxes). The city tax rate is \$5.74 per \$100 of assessed value. The county rate is \$15.40 per \$100 of assessed value. The effective city tax rate (tax liability per \$100 of market value) is \$.60. The effective county rate is \$1.62. The state has no tax on a manufacturer's inventories, goods-in-process, raw materials or finished goods. Treatment facilities or equipment of manufacturing plants which control water or air pollution are exempt from all property taxation.

INDUSTRIAL SITES

Industrial sites are available in Barnwell with a wide range of geographic and topographic features. In all probability, a site that will meet the needs of most industries' requirements has been identified, catalogued, and entered into the State Development Board's Computerized Site Selection System. Detailed site information is available and will be furnished upon request.

MAJOR EMPLOYERS

Name	Product or Service	Employees
Burlington Industries — Carpet Division	Synthetic carpet yarn	146
Carolina Metals, Inc.	Depleted uranium metal derbies	62
Milliken & Company — Barnwell Mill	Weaving and finishing	470
Riteway Machine & Specialty Co., Inc.	Fabrication; tool and die	60
Shuron Textron	Ophthalmic lenses	315

For Additional Information Contact:

SOUTH CAROLINA STATE DEVELOPMENT BOARD
 P. O. Box 927, Columbia, South Carolina 29202
 (803) 758-3145