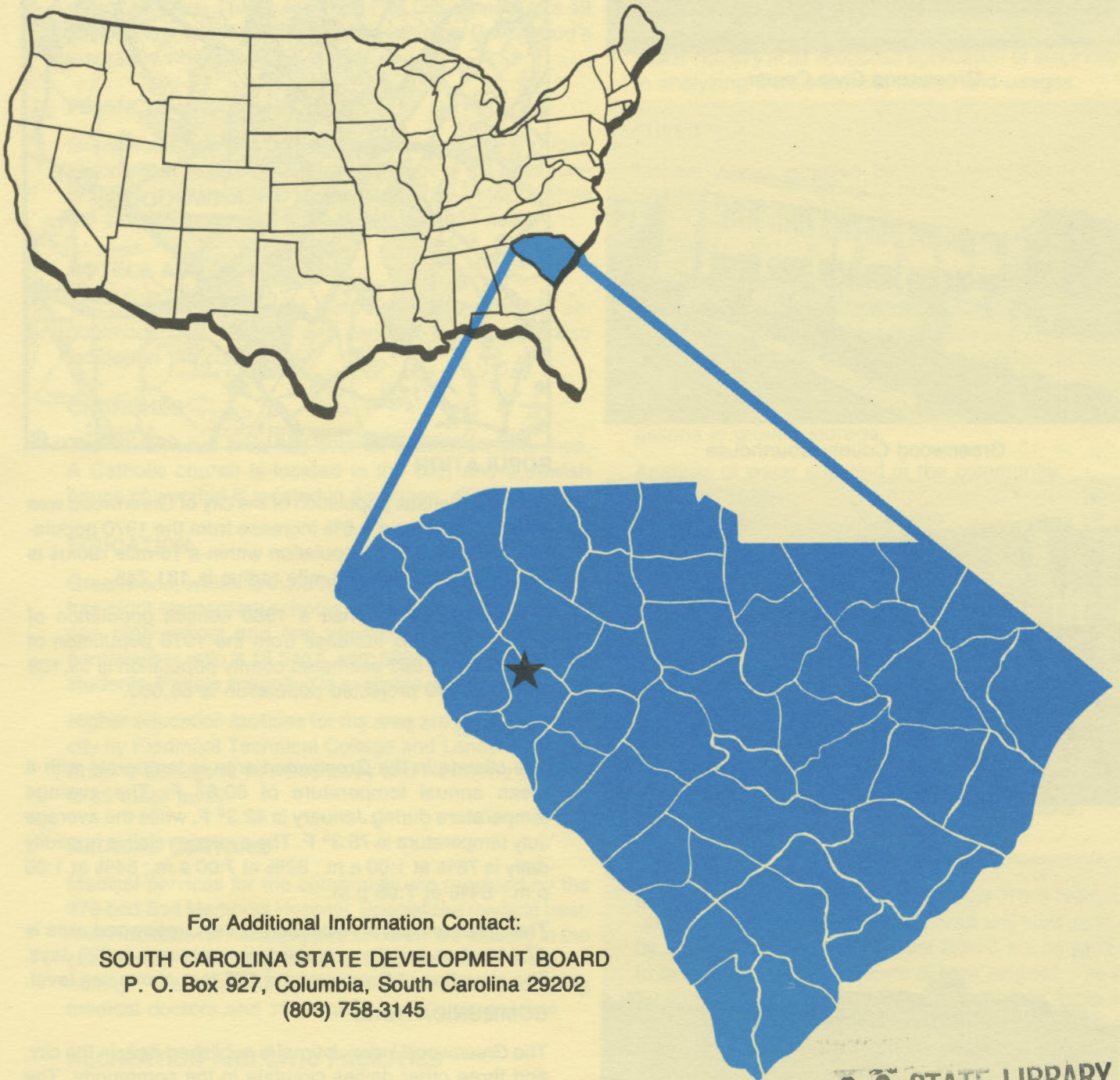


D4925  
2.G63-2  
1984  
Copy 1

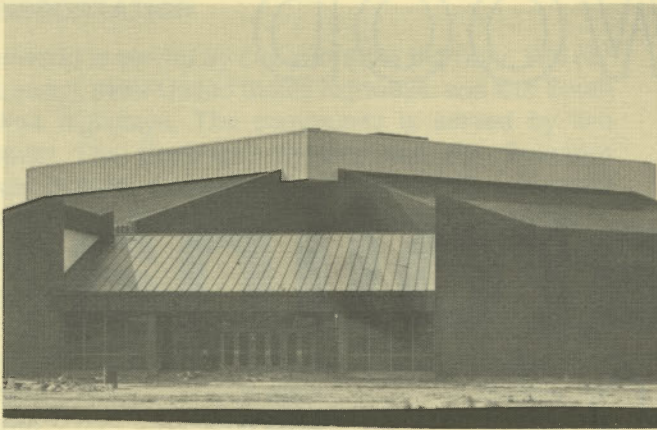
# GREENWOOD

## south carolina

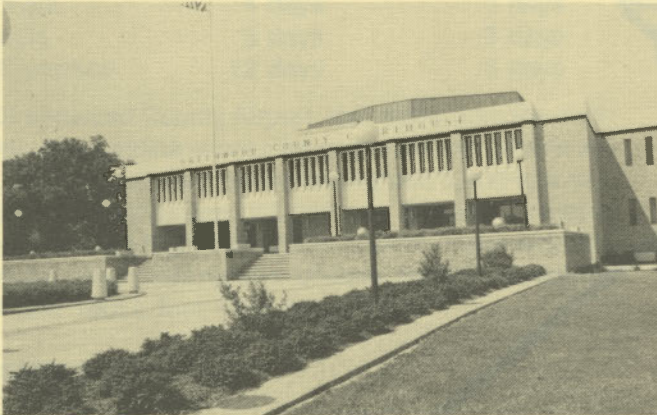


For Additional Information Contact:  
SOUTH CAROLINA STATE DEVELOPMENT BOARD  
P. O. Box 927, Columbia, South Carolina 29202  
(803) 758-3145

S. C. STATE LIBRARY  
JUN 19 1984  
STATE DOCUMENTS



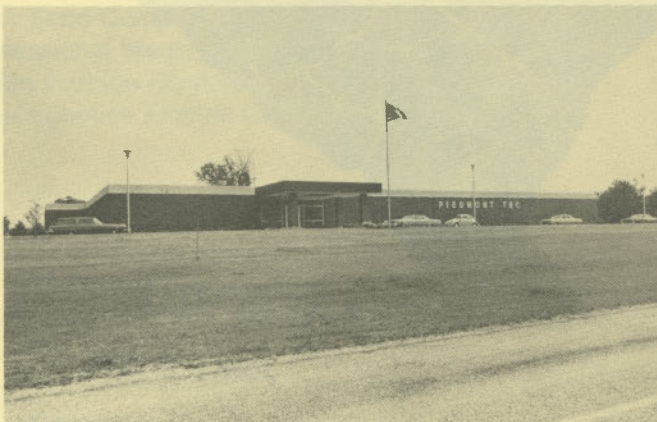
Greenwood Civic Center



Greenwood County Courthouse



Greenwood Municipal Building



Piedmont Technical College

## LOCATION

As depicted on the cover, Greenwood, seat of Greenwood County, is in the western section of the state. Charleston, South Carolina's busiest port, is 175 miles southeast. Columbia is 74 miles east and Greenville is 53 miles north. Greenwood is 220 miles east of Atlanta; 753 miles south of New York; and 2,743 miles east of San Francisco.



## POPULATION

The 1980 census population of the city of Greenwood was 21,613. This was a 2.6% increase from the 1970 population of 21,069. The population within a 15-mile radius is 75,564 and within a 30-mile radius is 181,745.

Greenwood County had a 1980 census population of 57,847, a 26.4% increase from the 1970 population of 49,686. The 1983 estimated county population is 59,108 and the 1990 projected population is 68,000.

## CLIMATE

The climate in the Greenwood area is temperate with a mean annual temperature of 60.6° F. The average temperature during January is 42.3° F, while the average July temperature is 78.3° F. The average relative humidity daily is 78% at 1:00 a.m.; 82% at 7:00 a.m.; 54% at 1:00 p.m.; 64% at 7:00 p.m.

The mean annual precipitation in the Greenwood area is 47.54 inches and the average growing season is 229 days. The elevation of Greenwood is 575 feet above sea level.

## COMMUNICATIONS

The *Greenwood Index-Journal* is published daily in the city, and three other dailies circulate in the community. The city has four radio stations, WGSW-AM, WCRS-AM, WSCZ-FM and WMTY-AM. Television reception in the community is available from six stations, representing the three major networks. Cable television service is also available in the city. Telephone service in the community is provided by the United Telephone Company of the Carolinas, Inc.

## GOVERNMENT

The community has a council-manager form of municipal government. The six city council members and the mayor are elected for two-year terms. Greenwood County is governed locally by a five-member county council, whose members are elected for two-year terms.

## POLICE AND FIRE

The Greenwood Police Department has 45 full-time police officers. The department operates 24 radio equipped patrol vehicles. The Greenwood Fire Department has 49 full-time firemen and 11 firefighting vehicles. Greenwood's insurance rating is Class 4.

## FINANCIAL INSTITUTIONS

Greenwood has five banks and three savings and loan associations to serve the financial needs of the community. The banks have total assets of over \$5.1 billion, while the savings and loans have assets of \$324 million.

## HOTELS AND MOTELS

The community has eight motels with 395 overnight accommodations. Meeting and banquet facilities are also located in the community.

## CHURCHES

The Greenwood area has over 60 Protestant churches. A Catholic church is located in the city, and a Jewish house of worship is located in Anderson, 45 miles away.

## EDUCATION

Greenwood, which is included in Greenwood District 50, has eight elementary schools, three junior high schools, one high school and one vocational school. The student/teacher ratio is 16.5 to 1, with 503 teachers and 8,320 students. Private schooling is available in the community.

Higher education facilities for the area are provided in the city by Piedmont Technical College and Lander College. Erskine College is 18 miles away and Newberry College is 35 miles away.

## MEDICAL SERVICES

Medical services for the community are provided by the 375-bed Self Memorial Hospital. Specialized medical treatment facilities for handicapped children are located in the community. A nursing home is also located in the community. The community has 102 privately-practicing medical doctors and 18 privately-practicing dentists.

## RECREATION AND CIVIC FACILITIES

Recreation facilities in the county include 24 playgrounds, two public swimming pools and two recreation centers with organized programs. Three 18-hole championship golf courses and two nine-hole golf courses are in the immediate vicinity of the city. Nearby Lake Greenwood offers facilities for boating, fishing and water sports. Mountain resorts are within a two-hour drive of the city. A

Y.M.C.A. is available in Greenwood. A new Greenwood Civic Center is also located in the city.

## POWER

Electric power is available to the community and surrounding areas from Duke Power Company. Duke Power service is supplied to any industrial customer at utilization voltage from standard equipment without additional charge. Duke's industrial rate is among the lowest in the nation.

Duke Power Company representatives are available to assist industry in its economic application of electricity and in analyzing their electrical needs and usages.

## FUELS

Natural gas is supplied by the Commission of Public Works.

## WATER

The Greenwood Commission of Public Works obtains the municipal water supply from nearby Lake Greenwood. The system is capable of supplying water at a maximum rate of 15.5 million gallons per day, with an average daily demand of 7.2 million gallons. Treated water storage consists of 1.3 million gallons in elevated tanks and 3.0 million gallons in ground storage.

Analysis of water supplied in the community:

Total solids	76 mg/L
Alkalinity	18 mg/L
Calcium	4 mg/L
Hardness	34 mg/L
Iron	0.1 mg/L
pH	7.6

## SEWER

The Greenwood Metropolitan Sewer District utilizes two wastewater treatment plants of the trickling filter type to dispose of sanitary sewage. The combined total capacity of these two plants is 9.5 million gallons per day, and the combined total daily flow is 7.1 million gallons.

## LABOR

Because labor information may change in this area, a current labor availability report prepared and kept up to date by the S. C. State Development Board will be furnished to prospective manufacturers at their request. The comprehensive report will include sources of recruitable labor, labor force characteristics, work force skill levels, earnings data and other pertinent information. The S. C. State Board for Technical and Comprehensive Education has the resources to recruit and train workers in accordance with a company's entry criteria. This training is at little or no cost to the employer. A lead-time schedule is developed to coordinate recruiting, testing, selecting, and training. This assures that persons will be able to move from training to their respective jobs at the time the plant is ready for initial production.

## TRANSPORTATION

Greenwood is served by one interstate highway, I-26 (27 miles away), three United States highways, and four South Carolina highways. The community is served by two railroads: The Seaboard System and the Southern Railway System. Greenwood is served by 43 authorized motor carriers, three of which have terminal facilities in the area.

### Freight Delivery Times:

To:	By Rail:	By Truck:
Atlanta	2 days	1 day
Boston	6 days	3 days
Chicago	6 days	3 days
Houston	9 days	4 days
New York	4 days	3 days
St. Louis	5 days	3 days
San Francisco	12 days	5 days

The Greenwood County Airport, four miles from the community, offers airline service for corporate and private aircraft. The airport has a paved and lighted 5,000-foot runway and a paved runway of 5,212 feet. Services available at the airport are flight instruction, charter, major airframe and major powerplant repairs, Unicom, hangars, tiedowns, Jet A and 100LL fuel, RBn and Vortac.

## FOREIGN TRADE ZONE

A Foreign Trade Zone is located in Summerville, South Carolina, 25 miles from the Port of Charleston and 150

miles from the community. The Foreign Trade Zone allows manufacturers to store, manufacture, or process goods without paying U.S. Customs duties or worrying about quota compliance. This Foreign Trade Zone is served by a multimode transportation network which provides excellent accessibility to market areas.

## TAXES

The assessment on industrial property in South Carolina is 10.5% of the market value. New industry is granted a five-year moratorium on general county taxes (with the exception of school taxes). The city tax rate is \$9.50 per \$100 of assessed value. The county rate is \$13.35 per \$100 of assessed value. The effective city tax rate (tax liability per \$100 of market value) is \$1.00. The effective county rate is \$1.40. The state has no tax on a manufacturer's inventories, goods-in-process, raw materials or finished goods. Treatment facilities or equipment of manufacturing plants which control water or air pollution are exempt from all property taxation.

## INDUSTRIAL SITES

Industrial sites are available in Greenwood with a wide range of geographic and topographic features. In all probability, a site that will meet the needs of most industries' requirements has been identified, catalogued, and entered into the State Development Board's Computerized Site Selection System. Detailed site information is available and will be furnished upon request.

## MAJOR EMPLOYERS

Name	Product or Service	Employees
Capsugel/Warner Lambert	Gelatin capsules	450
Cincinnati Milacron, Inc.	Industrial robots	205
Greenwood Mills (8 plants)	Textiles	3,440
Greenwood Packing Plant	Pork & beef products	520
McGraw-Edison Co.	Capacitors & metal housed devices	300
Monsanto Fibers & Intermediates Co.	Nylon 66	1,600
Moore Business Forms	Business forms	247
Neptune Measurement Co.	Meters	240
Park Seed Company	Packaged seed, bulbs	400
Professional Medical Products, Inc.	Medical & surgical products	665
Union Carbide Corporation	Capacitors	390
Westinghouse Electric Corporation	Switchgear assemblies	221

