

D4925  
2.585-2  
1985  
Copy 1

# SUMTER

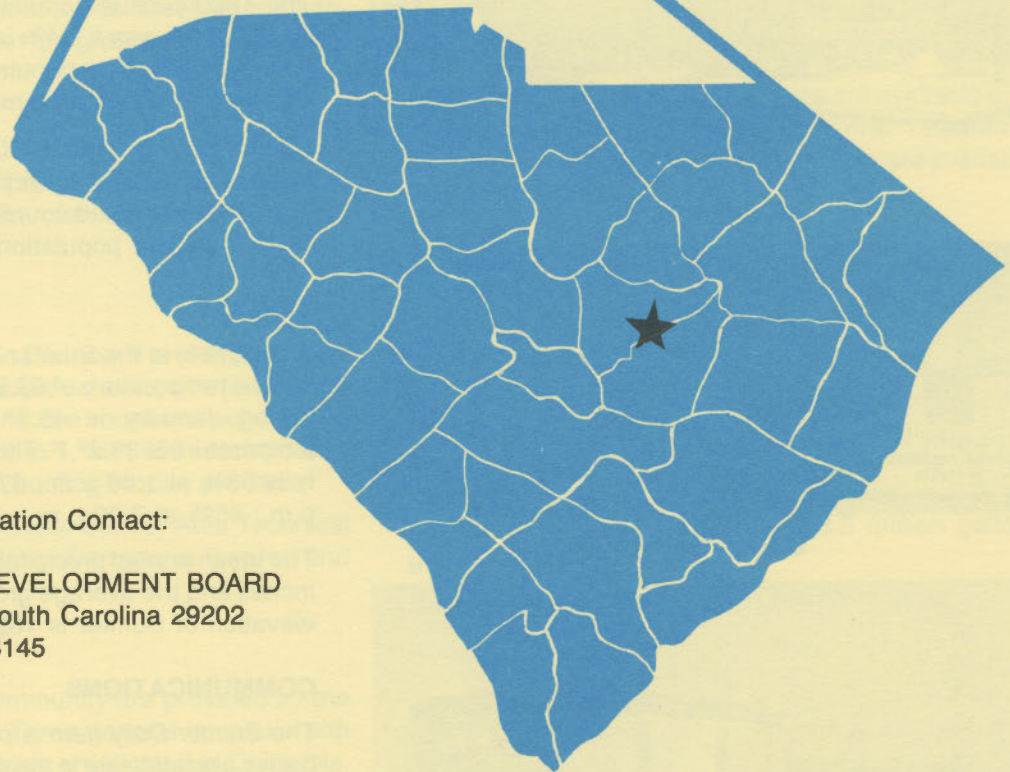
# south carolina



S. C. STATE LIBRARY

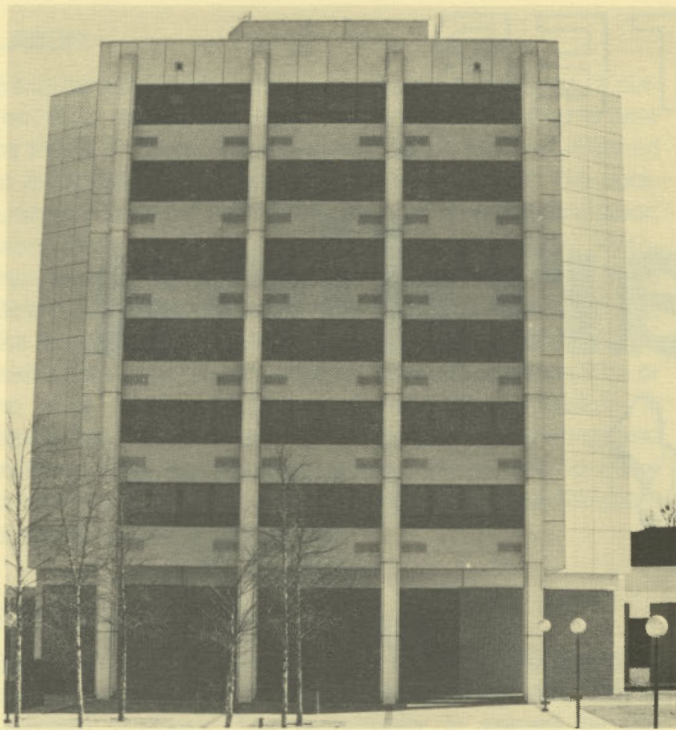
DEC 1 1 1985

STATE DOCUMENTS



For Additional Information Contact:

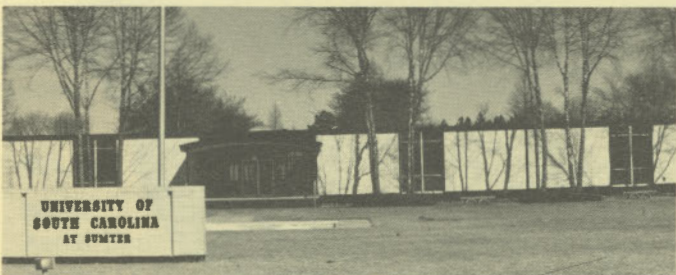
SOUTH CAROLINA STATE DEVELOPMENT BOARD  
P.O. Box 927, Columbia, South Carolina 29202  
(803) 758-3145



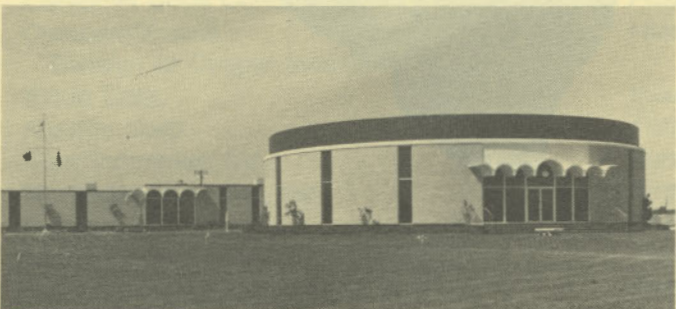
City-County Office Complex



Tuomey Hospital



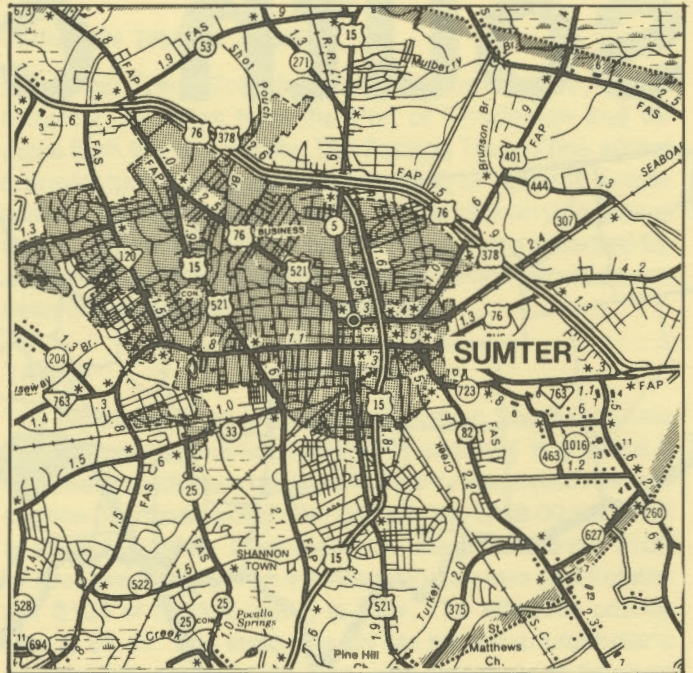
USC at Sumter



Sumter Area Technical College

## LOCATION

As depicted on the cover, Sumter, seat of Sumter County, is in the central section of the state. Charleston, South Carolina's busiest port, is 94 miles south. Columbia is 44 miles west and Greenville is 145 miles northwest. Sumter is 257 miles east of Atlanta; 675 miles south of New York; and 2,780 miles east of San Francisco.



## POPULATION

The 1980 census population of the city of Sumter was 24,890. This was a 1.4% increase from the 1970 population of 24,555. The population within a 15-mile radius is 89,164 and within a 30-mile radius is 201,798.

Sumter County had a 1980 census population of 88,243, an 11.1% increase from the 1970 population of 79,425. The 1985 estimated county population is 92,300 and the 1990 projected population is 98,900.

## CLIMATE

The climate in the Sumter area is temperate with a mean annual temperature of 63.5° F. The average temperature during January is 45.4° F, while the average July temperature is 81.2° F. The average relative humidity daily is 83% at 1:00 a.m.; 87% at 7:00 a.m.; 52% at 1:00 p.m.; 65% at 7:00 p.m.

The mean annual precipitation in the Sumter area is 43.36 inches and the average growing season is 225 days. The elevation of Sumter is 169 feet above sea level.

## COMMUNICATIONS

The *Sumter Daily Item* is published in the city. Six large dailies also circulate in the area. Two AM and two FM radio stations are located in the community. Five television stations representing the three major networks and ETV can be received in Sumter. WRJA-TV, an ETV channel, operates in Sumter. A 23-channel cable television service is available. Telephone service is provided by the General Telephone Company of the Southeast and the Farmers Telephone Cooperative, Inc.

## GOVERNMENT

The community has a council-manager form of municipal government. The four city council members and the mayor are elected for four-year terms. Sumter County is governed locally by a seven-member council-administrator, whose members are elected for four-year terms.

## POLICE AND FIRE

Both the City of Sumter and Sumter County law enforcement personnel are headquartered in a modern Law Enforcement Center. The city operates with 57 full-time police officers with 16 additional officers in reserve. The Sheriff's Department operates with 52 full-time officers and 11 officers in reserve.

Sumter County which includes the City of Sumter has a county-wide consolidated fire department which operates six pumper trucks and two ladder trucks with 60 full-time and 300 volunteer firemen. Squads respond to calls nearest them. Sumter's insurance rating is Class 2.

## FINANCIAL INSTITUTIONS

Sumter has four banks and two savings and loan associations to serve the financial needs of the community. The banks have total assets of over \$6.2 billion, while the savings and loans have assets of \$1.9 billion.

## HOTELS & MOTELS

Sumter has four large motels providing a combined total of over 450 overnight accommodations. Additional facilities are available within 25 miles. Meeting and banquet facilities are available for groups of up to 4500 persons.

## CHURCHES

Sumter has 100 churches representing 20 religious faiths, including Roman Catholic, Jewish and Protestant denominations.

## EDUCATION

Sumter, which is included in Districts 2 and 17, has nine elementary schools; two middle schools; one junior high school; four high schools; and one vocational school. The student/teacher ratio is 18.3 to 1, with 690 teachers and 12,613 students. Private schooling is also available.

Higher education facilities include Sumter Area Technical College, the University of South Carolina at Sumter, and Morris College.

## MEDICAL SERVICES

Medical services for the community are provided by the 235-bed Tuomey Hospital. Three general hospitals with a combined total of 1,323 beds are located in Columbia, 44 miles from Sumter. The community has 80 privately-practicing medical doctors and 23 privately-practicing dentists.

## RECREATION AND CIVIC FACILITIES

The Sumter County Exhibition Center is used as a multi-

purpose facility for the public. Swan Lake Iris Gardens, in the city, is a 168-acre tract of landscaped gardens and lakes. Organized recreation for all age groups is under a full-time director, and utilizes the city's four year-round playgrounds and community centers, 10 summer playgrounds and one public swimming pool. Three 18-hole golf courses are located in the vicinity of the city. Three indoor movie theaters, one outdoor theater, a Little Theater Group, Community Concert Association, art gallery, museum, historical sites, YMCA, and YWCA provide other recreation and entertainment.

## POWER

Electric power is available to the community and surrounding areas from Carolina Power & Light Company (CP&L) and Black River Electric Cooperative. CP&L has firm generation capacity of 8,000 megawatts and forecasts sufficient reserves to accommodate industrial growth in its service area. Economical power from nuclear energy accounts for a major portion of CP&L's generation and serves to keep the company's rates below the national average. Usually CP&L will install, at no cost to the customer, the necessary equipment to supply the electrical requirements. Alternative rate schedules are available to the industrial customer with the most economical rate for a specific application determined by the characteristics of the user's consumption.

Electric power for Black River Electric Cooperative is supplied by Central Electric Cooperative and South Carolina Public Service Authority. The generation capacity of plants in operation or under construction totals over 3,200 megawatts with approximately 73% produced from coal. Interconnections are maintained with all neighboring power suppliers. Sufficient reserves are available to meet immediate and future industrial power requirements. Economic Development Incentive Rates are available for qualifying industries.

## FUELS

Natural gas is supplied by the Peoples Natural Gas Company.

## WATER

Sumter's city water system uses deep wells to supply water at a maximum rate of 9.0 million gallons per day. The average daily demand on the system is 7.0 million gallons. Treated water storage consists of 2.0 million gallons in elevated storage and 3.5 million gallons in ground storage.

Analysis of water supplied in the community:

Total solids	80 mg/L
Alkalinity	61 mg/L
Calcium	24 mg/L
Hardness	64 mg/L
Iron	.12 mg/L
pH	8.6

## SEWER

Sumter presently utilizes an activated sludge facility with a design capacity of 6.0 million gpd and an average daily flow of 5.56 million gallons.



## LABOR

Because labor information may change in this area, a current labor availability report prepared and kept up to date by the S. C. State Development Board will be furnished to prospective manufacturers at their request. The comprehensive report will include sources of recruitable labor, labor force characteristics, work force skill levels, earnings data and other pertinent information. The S. C. State Board for Technical and Comprehensive Education has the resources to recruit and train workers in accordance with a company's entry criteria. This training is at little or no cost to the employer. A lead-time schedule is developed to coordinate recruiting, testing, selecting, and training. This assures that persons will be able to move from training to their respective jobs at the time the plant is ready for initial production.

## TRANSPORTATION

Sumter is served by one interstate highway, I-95 (ten miles away), four United States highways and one South Carolina highway. The community is served by the Seaboard System Railroad. Sumter is served by 50 authorized motor carriers, five of which have terminal facilities in the community.

### Freight Delivery Times:

To:	By Rail:	By Truck:
Atlanta	2 days	1 day
Baltimore	3 days	3 days
Chicago	4 days	3 days
Houston	6 days	3 days
New York	4 days	4 days
St. Louis	4 days	4 days
San Francisco	6 days	5 days

The Columbia Metropolitan Airport, 44 miles from the community, offers regularly scheduled commercial airline service on Delta, American, United, Eastern, People Express, Bankair and Piedmont. The airport has full commercial facilities and a modern air freight terminal.

## MAJOR EMPLOYERS

Name	Product or Service	Employees
Acme Strapping Corp.	Tools, strapping machines	90
Becton Dickinson Vacutainer Systems	Disposable medical-surgical instruments	650
Bendix Corporation	Automotive drum brake assemblies	260
Campbell Soup Company	Frozen convenience foods	912
Crescent/Xcelite, Division of Cooper Industries	Hand tools	515
Exide Corp.	Industrial batteries	431
Kaydon Corp.	Turntable bearings	118
Korn Industries, Inc.	Furniture, lumber	573
Montague, B.L. Co., Inc.	Engineered conveyors, steel fabricators	300
Pioneer, Ltd.	Children's and ladies' apparel	650
Santee Print Works	Textiles	850
Westinghouse Electric Corp.	Electrical distribution equipment	221
Williams Furniture Co.	Furniture	878

Sumter Municipal Airport, five miles from downtown Sumter, offers commuter service on Bankair. Private aircraft also utilize the Sumter Municipal Airport, which has a 4,800-foot paved and lighted runway. Services available at the Sumter Municipal Airport include RBn, major airframe and major powerplant repairs, 100LL and Jet A fuel, Unicom and Vortac.

## FOREIGN TRADE ZONE

A Foreign Trade Zone is located in Summerville, South Carolina, 25 miles from the Port of Charleston and 69 miles from the community. The Foreign Trade Zone allows manufacturers to store, manufacture, or process goods without paying U.S. Customs duties or worrying about quota compliance. This Foreign Trade Zone is served by a multimode transportation network which provides excellent accessibility to market areas.

## TAXES

The assessment on industrial property in South Carolina is 10.5% of the market value. New industry is granted a five-year moratorium on general county taxes (with the exception of school taxes). The city tax rate is \$8.00 per \$100 of assessed value. The county tax rate is \$14.16 per \$100 of assessed value. The effective city tax rate (tax liability per \$100 of market value) is \$.84. The effective county rate is \$1.49. The state has no tax on a manufacturer's inventories, goods-in-process, raw materials or finished goods. Treatment facilities or equipment of manufacturing plants which control water or air pollution are exempt from all property taxation.

## INDUSTRIAL SITES

Industrial sites are available in Sumter with a wide range of geographic and topographic features. In all probability, a site that will meet the needs of most industries' requirements has been identified, catalogued, and entered into the State Development Board's Computerized Site Selection System. Detailed site information is available and will be furnished upon request.