

SCSL Digital Collections

Harbor River Bridge replacement Beaufort County project update 2020 - Summer

Item Type	Text
Publisher	South Carolina State Library
Rights	Copyright status determined to be in the public domain on April 27, 2020 by United States Supreme Court ruling (Georgia et al., Petitioners v. Public.Resource.Org, Inc. : 590 U.S.___(2020))
Download date	2024-11-06 15:02:18
Link to Item	https://dc.statelibrary.sc.gov/handle/10827/34982



HARBOR RIVER BRIDGE REPLACEMENT

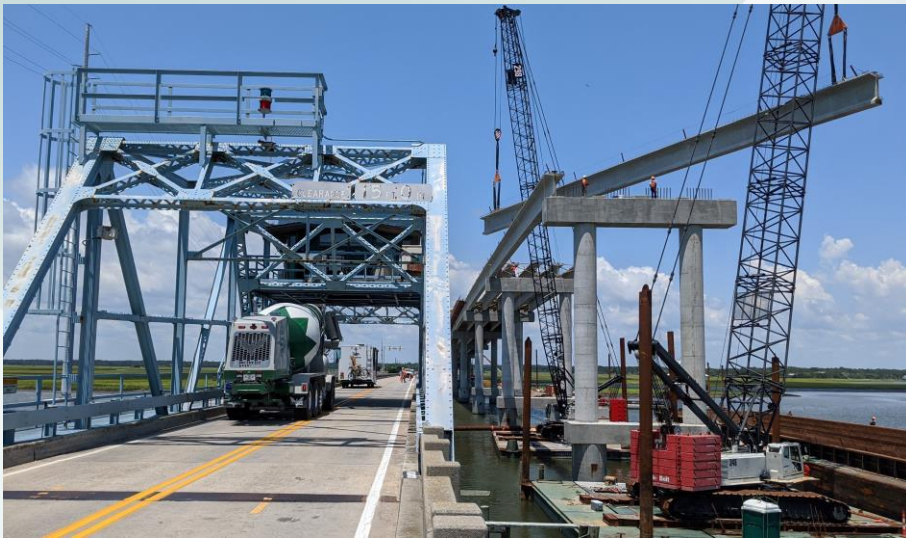
Beaufort County



Project Update 2020 – Summer

PROJECT INFORMATION

SCDOT is constructing a new high-level fixed-span bridge and removing the swing-span bridge along US 21 (Sea Island Parkway) over the Harbor River in Beaufort County. The bridge provides the only means for vehicular access from the mainland to Harbor Island, Hunting Island, and Fripp Island. The proposed 3,340' long and 65' tall fixed span bridge, which can be seen in the rendering to the right, will replace the current swing-span bridge that was originally constructed between 1938 and 1940.



CURRENT ACTIVITIES

SCDOT's design-build contractor is making significant progress on the project. Bridge construction activity has shifted away from St. Helena Island and is now focused in the waterway and on the Harbor Island high-level approach. Motorists can observe that all bridge beams are in place on the west half of the bridge as they continue to be delivered by barge and lifted into place. Concrete bridge deck construction is following closely behind beam placement and is now approaching the channel. Driven pile foundations are being completed while column and cap construction continues on the piers leading from the channel to Harbor Island.

PROJECT MILESTONES

Embankment Construction

Extra embankment has been placed on both approaches to reduce long-term settlement. The extra material will be removed before the roadway pavement is constructed.

Construction Causeway

Land access to the temporary barge causeway has been shifted from St. Helena Island to Harbor Island.

Substructure Construction

All drilled shaft foundations have been completed, and the remaining driven pile foundations are being completed on the east end. Pier columns and caps are 70% complete.

Superstructure Construction

Half of the bridge beams have been set and have reached the navigation channel, and 40% of the bridge deck concrete has been placed.

US 21 Harbor River Bridge Replacement Project updates are prepared regularly.

Next Project Update: 2020 Q4

SCDOT's Project Page:

<https://www.scdot.org/inside/harbor-river-bridge.aspx>

For project related inquiries, contact Sarah Gaffney at GaffneySH@scdot.org.

