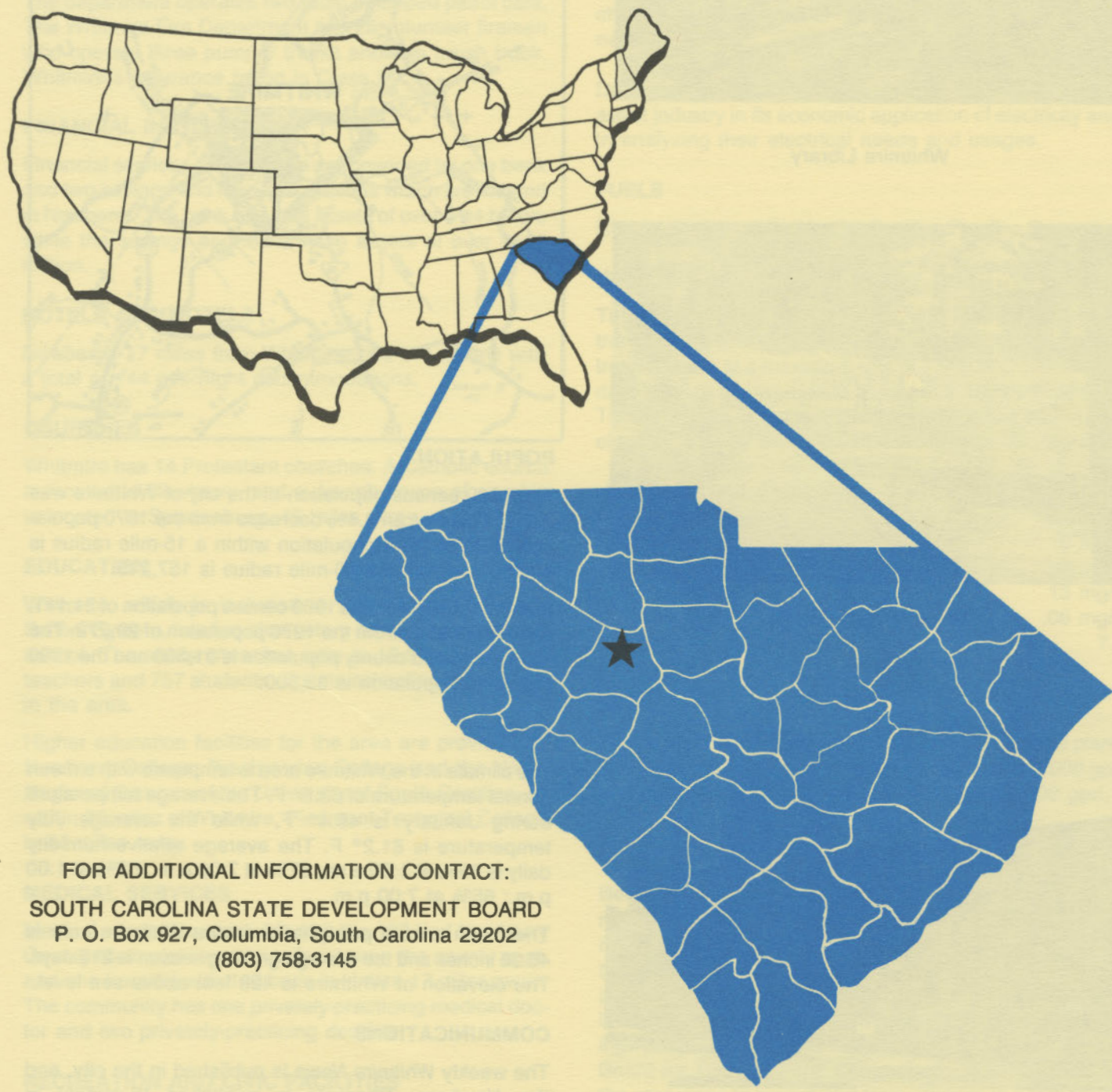


D4925  
2.W44  
1984

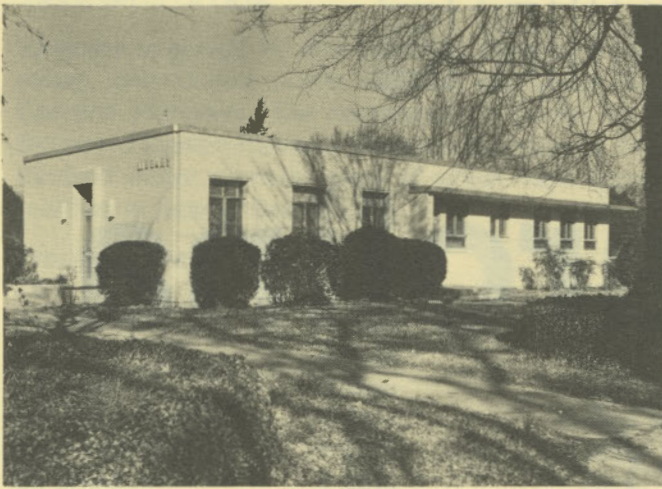
# WHITMIRE

## south carolina



FOR ADDITIONAL INFORMATION CONTACT:  
SOUTH CAROLINA STATE DEVELOPMENT BOARD  
P. O. Box 927, Columbia, South Carolina 29202  
(803) 758-3145

S. C. STATE LIBRARY  
JUN 7 1984  
STATE DOCUMENTS



Whitmire Library



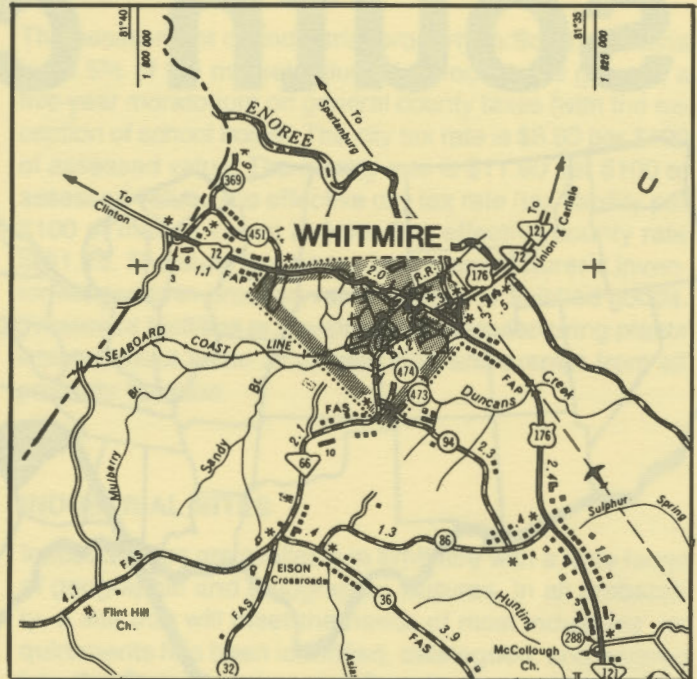
Whitmire Golf Course



J. P. Stevens & Co., Inc.  
Whitmire Plant

## LOCATION

As depicted on the cover, Whitmire is in the central section of the state in Newberry County. Charleston, South Carolina's busiest port, is 170 miles southeast. Columbia is 55 miles southeast and Greenville is 51 miles northwest. Whitmire is 191 miles east of Atlanta; 698 miles south of New York; and 2,714 miles east of San Francisco.



## POPULATION

The 1980 census population of the city of Whitmire was 2,038. This was an 8.4% decrease from the 1970 population of 2,226. The population within a 15-mile radius is 46,650 and within a 30-mile radius is 157,215.

Newberry County had a 1980 census population of 31,111, a 6.3% increase from the 1970 population of 29,273. The 1981 estimated county population is 31,300 and the 1990 projected population is 33,300.

## CLIMATE

The climate in the Whitmire area is temperate with a mean annual temperature of 63.5° F. The average temperature during January is 45.4° F, while the average July temperature is 81.2° F. The average relative humidity daily is 83% at 1:00 a.m.; 87% at 7:00 a.m.; 52% at 1:00 p.m.; 65% at 7:00 p.m.

The mean annual precipitation in the Whitmire area is 46.36 inches and the average growing season is 216 days. The elevation of Whitmire is 428 feet above sea level.

## COMMUNICATIONS

The weekly *Whitmire News* is published in the city, and the *Newberry Observer* is published tri-weekly in Newberry. Three dailies circulate in the city. Radio stations WKDK and WKMG have AM broadcast facilities in Newberry, 17 miles away. Television reception is available from 10 stations, representing the three major networks. Telephone service is provided by Southern Bell of Bell South Corporation.

## GOVERNMENT

The community has a mayor-council form of municipal government. The six city council members and the mayor are elected for two-year terms. Newberry County is governed locally by a council-administrator form of government whose seven council members are elected for four-year terms.

## POLICE AND FIRE

The Whitmire Police Department has five full-time officers. The department operates two radio equipped patrol cars. The Whitmire Fire Department has 26 volunteer firemen who operate three pumper trucks and one brush truck. Whitmire's insurance rating is Class 8.

## FINANCIAL INSTITUTIONS

Financial services for Whitmire are provided by one bank and two savings and loan associations which are located in Newberry. The bank has total assets of over \$1.4 billion, while the savings and loans have assets of over \$513 million.

## HOTELS AND MOTELS

Newberry, 17 miles from Whitmire, has two motels with a total of 144 overnight accommodations.

## CHURCHES

Whitmire has 14 Protestant churches. A Catholic church is located in Newberry, and a Jewish house of worship is located in Spartanburg, 45 miles away.

## EDUCATION

Whitmire, which is included in the Newberry County School System, has two elementary schools and one high school. The student/teacher ratio is 18.5 to 1, with 41 teachers and 757 students. Private schooling is available in the area.

Higher education facilities for the area are provided by Newberry College, Presbyterian College and the Union Regional Campus of the University of South Carolina, all within 25 miles of Whitmire. Piedmont Technical College is 44 miles away.

## MEDICAL SERVICES

Medical services are provided by the 102-bed Newberry County Memorial Hospital in Newberry, the county seat, and one hospital with 143 beds in Union, 17 miles away. The community has one privately-practicing medical doctor and two privately-practicing dentists.

## RECREATION AND CIVIC FACILITIES

Recreation facilities in the community consist of tennis courts, two playgrounds and a park equipped for outdoor cooking. The Whitmire Golf Course has a nine-hole course. Nearby Lake Murray and Lake Greenwood provide areas for fishing, boating, sailing, swimming and other forms of water sports. Collegiate spectator sports,

art exhibits, concerts and dramatic performances are available in several communities within a 25-mile radius. Whitmire is within a three-hour drive of coastal resorts and mountain resorts.

## POWER

Electric power is available to the community and surrounding areas from Duke Power Company. Duke Power service is supplied to any industrial customer at utilization voltage from standard equipment without additional charge. Duke's industrial rate is among the lowest in the nation.

Duke Power Company representatives are available to assist industry in its economic application of electricity and in analyzing their electrical needs and usages.

## FUELS

Natural gas is supplied by the Carolina Pipeline Company.

## WATER

The community obtains its municipal water supply from the Enoree River. The filter plant is capable of supplying treated water at a maximum rate of 1,000,000 gallons per day, with an average daily demand of 500,000 gallons. Treated water storage consists of 595,000 gallons in elevated storage and 370,000 gallons in ground storage.

Analysis of water supplied in the community:

Total solids	62 mg/L
Alkalinity	18 mg/L
Calcium	3 mg/L
Hardness	13 mg/L
Iron	.06 mg/L
pH	7.2

## SEWER

Whitmire utilizes an extended-aeration type disposal plant. The treatment plant has a design capacity of 600,000 gpd and currently is handling approximately 400,000 gpd.

## LABOR

Because labor information may change in this area, a current labor availability report prepared and kept up to date by the S. C. State Development Board will be furnished to prospective manufacturers at their request. The comprehensive report will include sources of recruitable labor, labor force characteristics, work force skill levels, earnings data and other pertinent information. The S. C. State Board for Technical and Comprehensive Education has the resources to recruit and train workers in accordance with a company's entry criteria. This training is at little or no cost to the employer. A lead-time schedule is developed to coordinate recruiting, testing, selecting, and training. This assures that persons will be able to move from training to their respective jobs at the time the plant is ready for initial production.

## TRANSPORTATION

Whitmire is served by one interstate highway, I-26 (13 miles), one United States highway and three South Carolina highways. The community is served by the Seaboard System Railroad. Whitmire is served by 34 authorized motor carriers, eight of which have terminal facilities in nearby Spartanburg.

### Freight Delivery Times:

To:	By Rail:	By Truck:
Atlanta	3 days	1 day
Boston	6 days	4 days
Chicago	6 days	3 days
Houston	9 days	3 days
New York	4 days	3 days
St. Louis	6 days	2 days
San Francisco	12 days	5 days

The Columbia Metropolitan Airport, 55 miles away, offers regularly scheduled commercial airline service on Delta, Eastern, United, Bankair, Piedmont and Wheeler. It has a modern air freight terminal. Private aircraft utilize the Newberry Municipal Airport, 17 miles away, which has a 3,500-foot paved and lighted runway. Services available at the Newberry Municipal Airport include flight instruction, rental, RBn, 100LL fuel, Unicom and Vortac.

## FOREIGN TRADE ZONE

A Foreign Trade Zone is located in Summerville, South Carolina, 25 miles from the Port of Charleston and 145 miles from the community. The Foreign Trade Zone allows

manufacturers to store, manufacture, or process goods without paying U.S. Customs duties or worrying about quota compliance. This Foreign Trade Zone is served by a multimode transportation network which provides excellent accessibility to market areas.

## TAXES

The assessment on industrial property in South Carolina is 10.5% of the market value. New industry is granted a five-year moratorium on general county taxes (with the exception of school taxes). The city tax rate is \$8.60 per \$100 of assessed value. The county rate is \$11.90 per \$100 of assessed value. The effective city tax rate (tax liability per \$100 of market value) is \$.90. The effective county rate is \$1.25. The state has no tax on a manufacturer's inventories, goods-in-process, raw materials or finished goods. Treatment facilities or equipment of manufacturing plants which control water or air pollution are exempt from all property taxation.

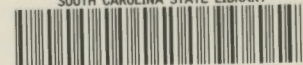
## INDUSTRIAL SITES

Industrial sites are available in Whitmire with a wide range of geographic and topographic features. In all probability, a site that will meet the needs of most industries' requirements has been identified, catalogued, and entered into the State Development Board's Computerized Site Selection System. Detailed site information will be furnished upon request.

## MAJOR EMPLOYERS

Name	Product or Service	Employees
Louis Rich Co.	Frozen turkey products	732
NI (Norris Industries)	Wheel covers	450
Oxford of Whitmire	Shirt collars	37
Riegel Textile Corp.	Towels, dishcloths, pot holders	323
Shakespeare Co. — Elect. & Fiberglas Div.	Communication and electric utility products	120
J. P. Stevens & Co., Inc.	Cotton and polyester fabric	919

SOUTH CAROLINA STATE LIBRARY



0 01 01 0033740 0