
Introduction

This report provides summary data for high school seniors taking the Scholastic Assessment Test known as SAT-I. Students take the test to provide colleges with information about how well they are prepared for a college-level curriculum. The SAT-I is the revised version of the Scholastic Aptitude Test (SAT). A description of this test can be located in appendix B of this report.

Students taking the SAT do not include all the students in a particular high school. Neither the State nor school districts are involved in funding or selecting the students who take this test. Instead, the SAT is administered by the College Board, a private company, and students register to take the test directly with the College Board. High schools provide registration forms and information to students about the test.

This report reflects reported scores for seniors who anticipated graduating in 2000. If a student takes the SAT as a junior, his or her scores are not reported until the following school year—the student’s senior year. If students take the SAT more than once, the most recent score is used in the summary score report.

Data are summarized for seniors in the nation, in South Carolina, in the eighty-six school districts and in the high schools in the State. The national and state summaries include seniors enrolled in both public and private high schools. School district and high school data summaries in this report include only public schools in the State.

The reporting of data summarized for students with twenty or more credits refers to students who have reported that their high school curriculum would include twenty or more academic credits. Academic courses, as recognized by the College Board, include credits in six academic areas: English, mathematics, natural science, foreign/classical languages, social science/history, and arts and music.

The scoring scale was recentered in spring 1995. The data in this summary report reflect the new, recentered scale. Data for the prior years for all students also are reported using the recentered scale.

Data are also available on the Department of Education’s home page on the Internet <<http://www.myschools.com>>.

Making Comparisons of SAT Scores for Groups of Students

There are some comparisons of SAT scores for groups of students that can be made fairly:

- comparisons across time (over years),
- comparisons between verbal and mathematical abilities, and
- comparison with the national average.

In the same way that a statement one makes can be taken out of context and used to imply something that goes beyond what was intended, a problem often occurs with test scores. It is unfair to compare scores across states, school districts, or schools without taking context into account.

A publication of the College Board, *Guidelines on the Uses of College Board Test Scores and Related Data*, discusses this topic. Factors beyond instruction affecting group performance results on the SAT are

- the participation rates (the percentage of students tested during the school year);
- the number of academic courses taken;
- the type of academic courses taken in high school;
- students' family backgrounds;
- the educational level of students' parents;
- the grade retention rates;
- the attrition or dropout rates;
- the graduation rates;
- the pupil/teacher ratios;
- the teachers' credentials;
- the expenditures per student; and
- the minority enrollment.

The participation rate for students in South Carolina is high, while number of academic courses tends to be low.

Background Information

Students who take the SAT complete a demographic questionnaire, but some students do not respond to all the questions. The following table indicates the percentage of students who provided their ethnicity.

	Ethnicity	
	Indicated	89%
Not Indicated	11%	2,476

The SAT is administered in October, November, December, January, March, April, May, and June of each year. October of the senior year is the most popular time for students to take the test. Students may take the test more than once; the most recent score is used in the computation of the average SAT score. Test registration forms are available at the local high schools.

Year of Most Recent SAT Scores for Current Graduating Seniors						
Year of Most Recent SAT Administration	South Carolina			Nation		
	Number Tested	Percent Tested	Composite Score	Number Tested	Percent Tested	Composite Score
Senior year	17,486	79	972	925,036	72	1002
Junior year	4,323	20	991	342,972	27	1068
Sophomore year	182	1	911	7,355	1	1039
Freshman year	18	0	837	957	0	1001
Total	22,009	100	974	1,276,320	100	1020

Replace with Chart:

Percentage of South Carolina Public School Students

Recentering the SAT Score Reporting Scale

The traditional SAT score reporting scale is a conversion of the raw score to a scale score that was anchored to a 1941 norm, or reference group, and established over fifty years ago. At the time the scale was established, a score of 500 was average. With a range of 200 to 800, scores of 400 to 600 were in the middle of the SAT score range. However, the 1941 population of ten thousand students who took the test consisted of a relatively small group and was an elite segment of the academic system. The original scale was representative of the students taking the test at that time but is not representative of the nation now, particularly the million-plus population applying for college today.

Beginning with 1996 SAT scores, recentering reset the midpoint of the score range at 500, the middle of the 200-to-800 scale based on the 1993 population, the new reference group. As a result, the recentered verbal and math scores can be examined on a comparable scale. On the original scale, a 424 verbal score was comparable to a 478 math score. Recentering eliminated confusion about differences in math and verbal scores. The meaning of “average” performance is now easier to understand. The use of 500 as average is again meaningful. Student scores are interpreted in percentiles that are comparisons of scores with the scores of others taking the test.

For additional information, see *The New SAT and Balancing the Scales*, a brochure published by the College Board’s Southern Regional Office. The College Board’s Internet home page contains additional information <<http://www.collegeboard.org/index.html>>.

Public School Students Meeting SAT Requirement for College Tuition Assistance (at four-year college or university)

Students with Scores of 1050 or Higher*

	All Students	Female	Males	African Americans	Whites
Percent	36.0	32.3	40.9	11.4	46.8
Number	6,643	3,405	3,238	550	5,087
Tested	18,463	10,545	7,918	4,839	10,879

*For entering college freshmen in 2001, the LIFE Scholarship requirement is a score of at least 1,050. See appendix F for additional details.

Performance for South Carolina and the Nation

The average SAT verbal score in South Carolina increased by 2 points between 2000 and 2001, from 484 to 486. The national average verbal score increased by 1 point, from 505 to 506. The average SAT math score in South Carolina increased by 6 points, from 482 to 488. Nationally, math scores remained the same, 514.

	South Carolina	Nation
Verbal		
Change in verbal from last year	+2	+1
Change in verbal from 1997 to 2001	+7	+1
Mathematics		
Change in math from last year	+6	0
Change in math from 1997 to 2001	+14	+3
Composite score gain from 1997 to 2001	+21	+4

South Carolina typically has the lowest average SAT scores (public and private schools) among the states. This year, the College Board released SAT averages by state for public schools. A table below provides the SAT averages for states in which public schools have similar performance to South Carolina on SAT.

State	Tested	Verbal	Math	Composite
Delaware	3,784	480	477	957
Georgia	42,958	486	486	972
Hawaii	4,754	463	488	951
North Carolina	39,065	491	499	990
Rhode Island	5,454	490	492	982
South Carolina	18,458	486	489	975
Texas	98,173	490	498	988

A complete list of the SAT public high school results by state is included in Appendix G.

State Results

The SAT is primarily used in twenty-three states and the District of Columbia as a college admissions test. The percentage of seniors who elect to take the SAT ranges from a low of 51 percent in California and Alaska to a high of 82 percent in Connecticut. The SAT states are listed below in participation rate order.

Average SAT Scores by State 2001				
	Participation Rate	Verbal	Math	Composite Score
Connecticut	82%	509	510	1019
New Jersey	81%	499	513	1012
Massachusetts	79%	511	515	1026
New York	77%	495	505	1000
New Hampshire	72%	520	516	1036
Rhode Island	71%	501	499	1000
Pennsylvania	71%	500	499	999
Vermont	69%	511	506	1017
Maine	69%	506	500	1006
Virginia	68%	510	501	1011
Delaware	67%	501	499	1000
Maryland	65%	508	510	1018
North Carolina	65%	493	499	992
Georgia	63%	491	489	980
Indiana	60%	499	501	1000
South Carolina	57%	486	488	974
D.C.	56%	482	474	956
Oregon	55%	526	526	1052
Florida	54%	498	499	997
Washington	53%	527	527	1054
Texas	53%	493	499	992
Hawaii	52%	486	515	1001
Alaska	51%	514	510	1024
California	51%	498	517	1015

Source: College Board, 2001

Appendix C provides data for all states.

State Participation Rate

States with Highest Participation Rates in 2001

State	Participation Rate	Verbal	Math	Composite Score
Connecticut	82%	509	510	1019
New Jersey	81%	499	513	1012
Massachusetts	79%	511	515	1026
New York	77%	495	505	1000
New Hampshire	72%	520	516	1036

States with Lowest Participation Rates in 2001

State	Participation Rate	Verbal	Math	Composite Score
Utah	5%	575	570	1145
Iowa	5%	593	603	1196
South Dakota	4%	577	582	1159
North Dakota	4%	592	599	1191
Mississippi	4%	566	551	1117

Analysis of South Carolina Data

When the 2001 performance is compared with 1997 performance, the average verbal score has increased 7 points in South Carolina, as compared to no change within that time period for the nation. The average math score increased by 14 points in South Carolina, as compared to an increase of 3 points for the nation.

South Carolina and National Average SAT Scores 1997–2001						
	South Carolina			Nation		
			Composite			Composite
Year	Verbal	Math	Score	Verbal	Math	Score
1997	479	474	953	505	511	1016
1998	478	473	951	505	512	1017
1999	479	475	954	505	511	1016
2000	484	482	966	505	514	1019
2001	486	488	974	506	514	1020
1997–01	+7	+14	+21	1	+3	+4

A comparison of scores by national quarter shows the gap in performance by ethnicity. The table below, as well as the chart on the following page, illustrates the differences.

Performance in Each National Quarter in 2001*				
<small>(South Carolina Public School Students)</small>				
	Lower Quarter	Lower Middle	Upper Middle	Upper Quarter
All students	31	27	26	15
African-American females	60	26	11	3
African-American males	57	25	14	3
White females	21	30	32	18
White males	16	26	33	24
National (all students)	25	25	25	25

*Percentages may not add up to 100 due to rounding.

INSERT GRAPH PAGE

Data by Gender

The average SAT verbal score for females in South Carolina remained the same between 2000 and 2001, 482. The average SAT math score for females increased by 6 points between 2000 and 2001, from 469 to 475.

The average SAT verbal score for males in South Carolina increased by 5 points between 2000 and 2001, from 487 to 492. The average SAT math score for males increased by 6 points between 2000 and 2001, from 500 to 506.

	South Carolina		Nation	
	Male	Female	Male	Female
Verbal				
Change in verbal from last year	+5 (487 to 492)	0 (482 to 482)	+2 (507 to 509)	-2 (504 to 502)
Mathematics				
Change in math from last year	+6 (500 to 506)	+6 (469 to 475)	0 (533 to 533)	0 (498 to 498)

From 1997 to 2010 the average SAT composite score for males increased 22 points; the composite score for females increased 23 points.

Average SAT Scores and Point Change South Carolina and Nation by Gender								
Subgroup	Test	1997	1998	1999	2000	2001	1997-01 State Change	2001 Nation
Females	Verbal	475	474	476	482	482	+7	502
	Math	459	460	461	469	475	+16	498
Males	Verbal	484	483	484	487	492	+8	509

Math	492	491	494	500	506	+14	533
------	-----	-----	-----	-----	-----	-----	-----

* Average SAT scores converted to recentered scale for comparison purposes.

Data by Educational Level of Parents

Students indicate the educational level of their parents when completing the SAT registration application.

Parental Educational Levels Reported by Students High School Diploma or Less Reported in Percentages					
South Carolina			Nation		
All			All		
<u>1999</u>	<u>2000</u>	<u>2001</u>	<u>1999</u>	<u>2000</u>	<u>2001</u>
43	42	40	38	37	36

Data by Ethnicity

In 2001, a larger percentage of South Carolina seniors elected to take the SAT compared to the national percentage.

	South Carolina		Nation	
	<u>#</u>	<u>%</u>	<u>#</u>	<u>%</u>
Graduating seniors Tested	22,008	57	1,276,320	45
African Americans	5,341	N/A	120,506	N/A
Whites	13,084	N/A	703,724	N/A
Other categories of ethnicity*	1,108	N/A	249,786	N/A

*Note: Not all students respond to questions about themselves, so subtotals for ethnicity do not sum to the total tested.

African-American students continue to make lower scores on the SAT than white students. The average verbal score for African-American students was 420 and 514 for white students. The average mathematics score was 421 for African-American students and 515 for white students.

	South Carolina		Nation	
	African Americans	Whites	African Americans	Whites
Verbal				
Change in verbal from last year	+1 (419 to 420)	+2 (512 to 514)	-1 (434 to 433)	+1 (528 to 529)
Mathematics				
Change in math from last year	+7 (414 to 421)	+5 (510 to 515)	0 (426)	+1 (530 to 531)

The average SAT verbal score for African-American students increased by 1 point between 2000 and 2001, from 419 to 420. The average SAT math score increased by 7 points, 414 to 421.

The average SAT verbal score for white students increased by 2 points to 514 between 2000 and 2001. The average SAT math score increased by 5 points, from 510 to 515.

From 1997 to 2001 African-American students' scores increased by 19 points, from 822 to 841 in the average SAT composite score, while the average SAT composite score for white students increased by 19, to 1,029 points.

Average SAT Scores and Point Change								
South Carolina and Nation by Ethnic Group								
Ethnic Group	Test	1997	1998	1999	2000	2001	1997-01 State Change	2001 Nation
African-American	Verbal	415	414	415	419	420	5	433
	Math	407	407	407	414	421	14	426
White	Verbal	508	508	509	512	514	6	529
	Math	502	502	504	510	515	13	531

South Carolina								
	2000				2001			
	#	%	Verbal	Math	#	%	Verbal	Math
American Indian	127	1	473	464	115	1	470	482
Asian American	399	2	493	545	439	2	490	539
African-American	5,512	27	419	414	5,341	27	420	421
Mexican American	79	0	471	481	84	0	461	462
Puerto Rican	69	0	504	495	63	0	497	484
Other Hispanic	114	1	496	492	137	1	496	490
White	13,537	67	512	510	13,084	67	514	515
Other	268	1	493	480	270	1	496	486
No response	2,574	*	472	469	2,476	*	483	483

* Not included in calculating percentages.

Nation								
	2000				2001			
	#	%	Verbal	Math	#	%	Verbal	Math
American Indian	7,658	1	482	481	7,622	1	481	479
Asian American	96,717	9	499	565	102,312	10	501	566
African-American	119,591	11	434	426	120,506	11	433	426
Mexican American	44,921	4	453	460	46,849	4	451	458
Puerto Rican	14,147	1	456	451	14,074	1	457	451
Other Hispanic	38,804	4	461	467	40,249	4	460	465
White	712,105	66	528	530	703,724	66	529	531
Other	38,634	4	508	515	38,680	4	503	512
No response	187,701	*	495	509	202,304	*	497	510

* Not included in calculating percentages.

Data by Class Rank

Seniors who self-report high class ranks in high school have higher scores than other seniors. Students in South Carolina who reported themselves in the top 10 percent of their class had an SAT average verbal score of 567 and an average SAT math score of 576.

Scores by Class Rank				
	Verbal		Math	
	South Carolina	Nation	South Carolina	Nation
Top tenth	567	588	576	607
Second tenth	506	526	512	540
Second fifth	470	490	474	497
Third fifth	436	454	434	452

Data by Grade Point Average

High School Grade Point Average	South Carolina SAT Test Takers		South Carolina SAT Mean Scores		Nation SAT Test Takers		Nation SAT Mean Scores	
	Number	Percent	Verbal	Math	Number	Percent	Verbal	Math
A+ (97–100)	1,178	6	588	595	76,687	7	609	626
A (93–96)	3,157	16	548	555	181,665	17	566	581
A- (90–92)	2,846	15	520	524	184,609	17	540	552
B (80–89)	9,582	49	466	467	510,176	47	482	486
C (70–79)	2,694	14	419	417	125,247	12	428	425
D, E, or F (below 70)	62	0	402	394	3,907	0	403	404
No response	2,490				194,029			

Districts above the National Average

The SAT is reported for high school seniors for each of the eighty-six school districts in South Carolina. Not all students in a district take the SAT; the percentage of students tested, by district, ranged from a low of 24 percent in Marion District Three to a high of 75 percent in Lexington District Five and York District Four in 2001.

In 2001, nine school districts with average SAT composite scores exceeded the national average SAT composite score of 1020.

District	2000			2001		
	Percent Tested	Number Tested	Composite Score	Percent Tested	Number Tested	Composite Score
Kershaw	45	225	1005	46	206	1021
Lexington 1	71	617	1045	66	595	1060
Lexington 5	79	746	1056	75	676	1063
Pickens	54	445	1014	54	413	1026
Spartanburg 6	55	291	1007	58	313	1043
Spartanburg 7	68	288	1018	61	274	1026
York 2	53	119	1005	56	132	1022
York 3	54	419	1012	53	356	1021
York 4	77	242	1036	75	197	1047

In addition to the average SAT scores for students by school district, the chart in appendix D provides the district average SAT scores for those students reporting that they expect to take twenty or more academic credits.

Private Schools

Data are not available for individual private schools. The state data by type of high school are provided here:

Type of High School	Students Tested	Composite Scores
Public	18,458	975
Private	2,264	1025
religiously affiliated	1,116	1039
independent	1,148	1011

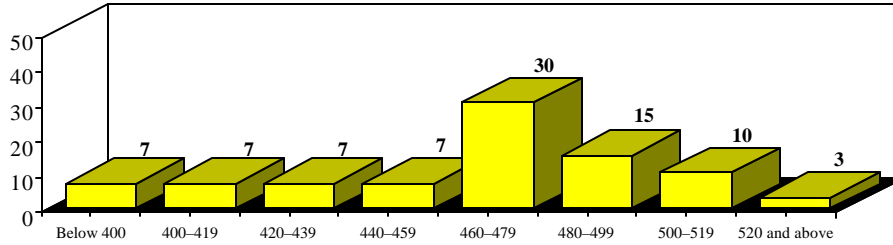
Not indicated

1,287

[data not compiled]

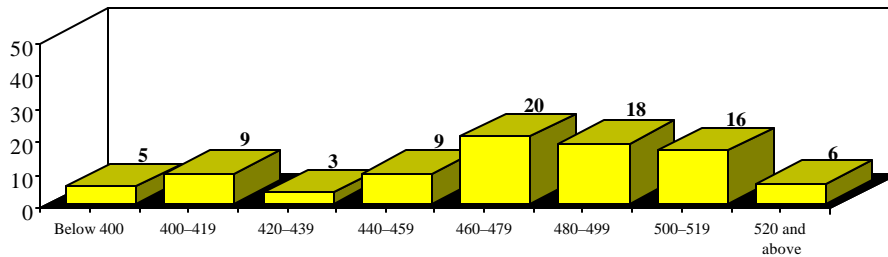
District Average SAT Scores

**Number of South Carolina School Districts in
SAT Score Intervals
Verbal, 2001**



National Average Score: 506 State Average Score: 486

**Number of South Carolina School Districts in
SAT Score Intervals
Math, 2001**



National Average Score: 514 State Average Score: 488

High Schools above the National Average

The SAT is reported for high school seniors by high school. In South Carolina, the percentage of seniors who elected to take the SAT ranges from a low of 18 percent at North Central High School in the Kershaw School District to a high of 100 percent at Academic Magnet High School in the Charleston School District.

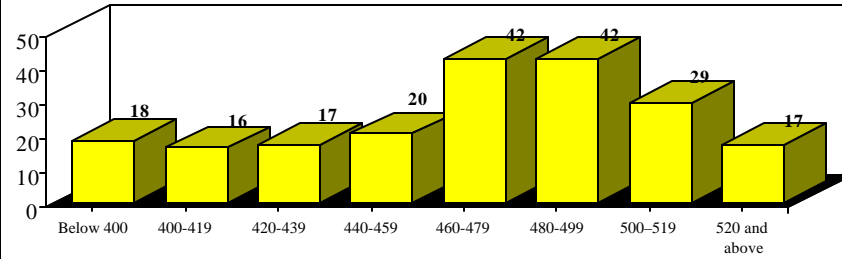
In 2001, twenty-nine public high schools, the Governor's School for Science and Math, and the Governor's School for the Arts and Humanities had average SAT composite scores that exceeded the 2001 national average SAT composite score of 1020.

Composite District	School	2000			2001		
		Tested %	Composite #	Score	Tested %	Composite #	Score
Aiken	Silver Bluff High	64	207	1007	68	181	1032
Aiken	South Aiken High	68	201	1043	73	194	1054
Berkeley	Hanahan High	32	49	1029	31	39	1080
Charleston	Charleston School of the Arts				95	62	1058
Charleston	Academic Magnet High	100	94	1213	100	104	1210
Chester	Great Falls Middle/High	22	13	1005	26	13	1049
Darlington	Mayo High For Math/Science	97	87	1030	93	70	1041
Greenville	Eastside High	83	210	1067	88	200	1063
Greenville	Riverside High	87	245	1089	92	232	1093
Greenville	Southside High	64	129	995	43	77	1059
Horry	Aynor High	30	38	1020	22	22	1035
Kershaw	Camden High	41	87	1042	43	82	1053
Lexington 1	Gilbert High	59	80	1036	63	80	1023
Lexington 1	Lexington High	77	494	1048	87	430	1076
Lexington 1	Pelion High	50	43	1021	31	34	1039
Lexington 2	Brookland Cayce High	54	127	1011	56	158	1028
Lexington 5	Chapin High	77	141	1058	71	139	1063
Lexington 5	Irmo High	84	331	1056	89	293	1052
Lexington 5	Dutch Fork High	74	274	1056	65	242	1076
Pickens	D W Daniel High	81	150	1058	71	128	1065
Pickens	Liberty High	38	43	1003	34	34	1035
Richland 1	Dreher High	76	181	1041	86	180	1030
Richland 1	A C Flora High	59	139	1002	64	124	1043
Richland 2	Richland Northeast High	66	230	1034	68	238	1041
Spartanburg 6	Dorman High	55	291	1007	58	313	1043
Spartanburg 7	Spartanburg High	68	288	1018	74	274	1026
York 2	Clover High	53	119	1005	56	132	1022

York 3	Northwestern High	66	280	1040	69	244	1031
York 4	Fort Mill High	77	242	1036	75	197	1047
	Gov.Sch.For Science & Math		60	1342		59	1337
	Gov.Sch For the Arts & Hum.					112	1128

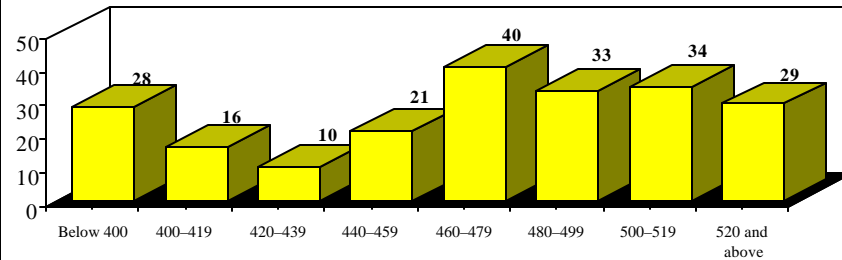
High School Average SAT Scores

**Number of South Carolina High Schools in
SAT Score Intervals
Verbal, 2001**



National Average Score: 506 State Average Score: 486

**Number of South Carolina High Schools in
SAT Score Intervals
Math, 2001**



National Average Score: 514 State Average Score: 488