

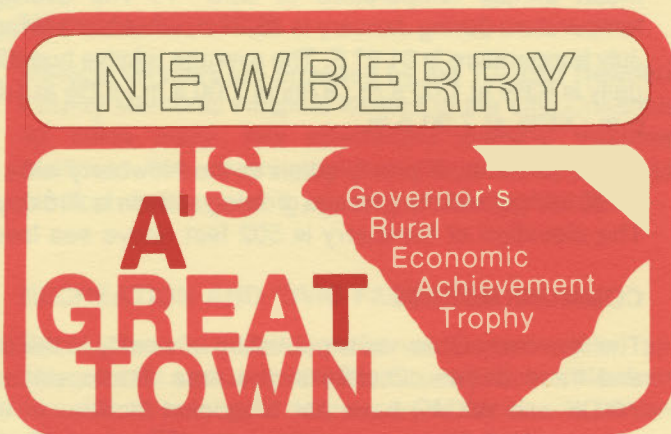
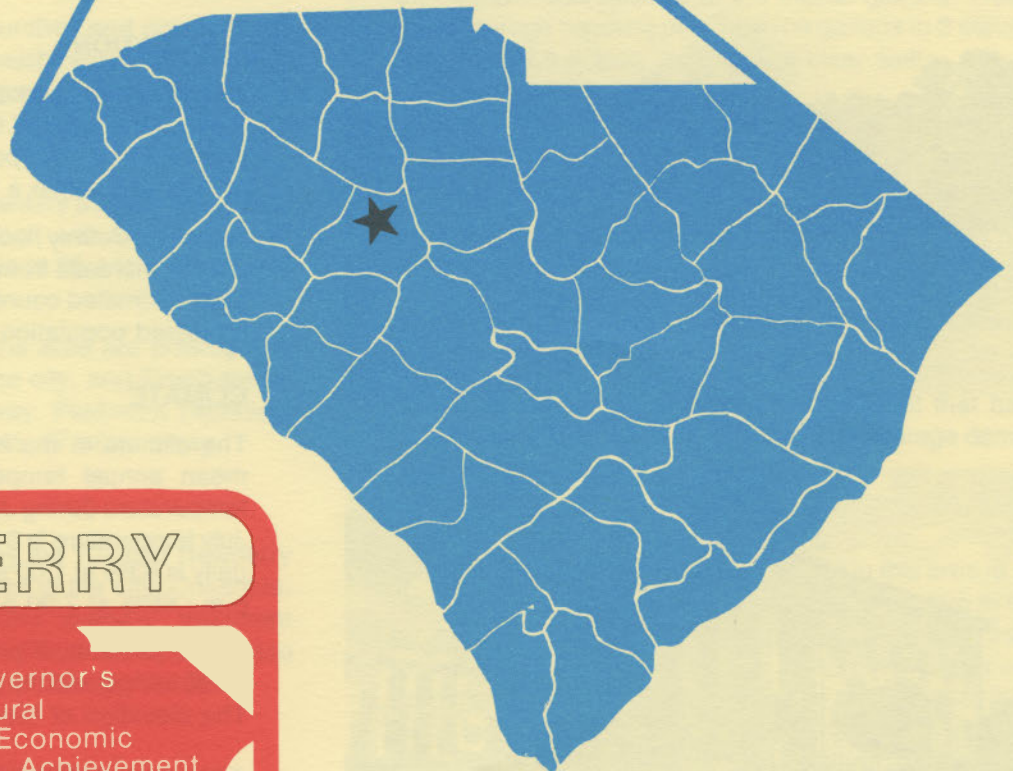
D4925
2.N38

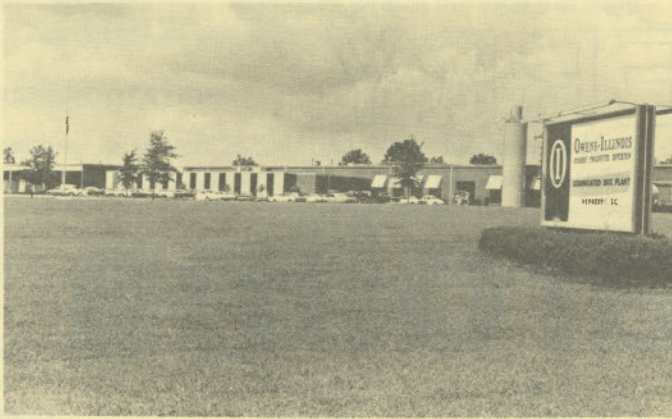
NEWBERRY

south carolina



S. C. STATE LIBRARY
SEP 14 1983
STATE DOCUMENTS





Owens-Illinois, Forest Products Division



Newberry College



Newberry Country Club



Community Hall

LOCATION

As depicted on the cover, Newberry, seat of Newberry County, is in the central section of the state. Charleston, South Carolina's busiest port, is 153 miles southeast. Columbia is 42 miles southeast and Greenville is 60 miles northwest. Newberry is 187 miles east of Atlanta; 725 miles south of New York; and 2,710 miles east of San Francisco.



POPULATION

The 1980 census population of the city of Newberry was 9,866. This was a 7.0% increase from the 1970 population of 9,218. The population within a 15-mile radius is 35,006 and within a 30-mile radius is 174,186.

Newberry County had a 1980 census population of 31,111, a 6.3% increase from the 1970 population of 29,273. The 1981 estimated county population is 31,300 and the 1990 projected population is 33,300.

CLIMATE

The climate in the Newberry area is temperate with a mean annual temperature of 63.5° F. The average temperature during January is 45.4° F, while the average July temperature is 81.2° F. The average relative humidity daily is 83% at 1:00 a.m.; 87% at 7:00 a.m.; 52% at 1:00 p.m.; 65% at 7:00 p.m.

The mean annual precipitation in the Newberry area is 46.36 inches and the average growing season is 216 days. The elevation of Newberry is 502 feet above sea level.

COMMUNICATIONS

The *Newberry Observer* is published tri-weekly in the city and three dailies circulate in the area. Radio stations WKDK and WKMG have AM broadcast facilities in the community. Television reception is available from 10 stations, representing the three major networks and educa-

tional television. Cable television is available in the city. Telephone service is provided by the Southern Bell Company.

GOVERNMENT

The community has a mayor-council-manager form of municipal government. The six city council members and the mayor are elected for four-year terms. Newberry County is governed locally by a county council and a manager. Council members are elected for four-year terms.

POLICE AND FIRE

The Newberry Police Department has 25 full-time police officers. The department operates 10 radio equipped patrol cars. The Newberry Fire Department has 14 full-time and 20 volunteer firemen who operate 5 pumper trucks. Newberry's insurance rating is Class 6.

FINANCIAL INSTITUTIONS

Newberry has 3 branch banks and 2 branch savings and loan associations to serve the financial needs of the community. The banks have total assets of \$5.0 billion, while the savings and loans have assets of \$513 million.

HOTELS AND MOTELS

The community has two motels with a total of 162 overnight accommodations.

CHURCHES

Newberry has 36 Protestant churches and one Catholic church located in the city. A Jewish house of worship is located in Columbia, 42 miles away.

EDUCATION

Newberry is served by four elementary schools, one junior high school and one high school, with one vocational center. The student/teacher ratio is 20.4 to 1 with 3,082 students and 151 teachers.

Higher education facilities for the area are provided by Newberry College, located in the city, and Presbyterian College in Clinton, 21 miles away. Piedmont Technical College is located in Greenwood, 37 miles away.

MEDICAL SERVICES

Medical services are provided by the 102-bed Newberry County Memorial Hospital located in the city. Columbia, 42 miles away, has specialized medical treatment facilities. The community has 20 privately-practicing medical doctors and 8 privately-practicing dentists.

RECREATION AND CIVIC FACILITIES

Recreation facilities consist of seven parks and playgrounds and one pool. The Country Club of Newberry has an 18-hole golf course, pool, tennis courts and clubhouse. The city operates two youth centers and supervised recreation programs. Nearby Lake Murray and Lake

Greenwood provide areas for fishing, boating and other water sports. Dreher Island State Park provides family recreation facilities. Newberry College offers collegiate spectator sports, dramatic performances and other forms of entertainment. Beach and mountain resorts are within a three-hour drive.

POWER

Electric power is supplied by Duke Power Company through the city of Newberry. Service is supplied to any industrial customer at utilization voltage from standard Duke Power Company equipment without additional charge. Duke's industrial rate is among the lowest in the nation. Duke Power Company representatives are available to assist industry in its economic application of electricity and in analyzing their electrical needs and usages.

Electric power is also available from Newberry Electric Cooperative. Power is generated by Central Electric Cooperative and South Carolina Public Service Authority. The generation capacity of plants in operation or under construction totals 3,435 megawatts with 73% produced from coal. Inter-tie connections are maintained with neighboring power supplies.

WATER

The community obtains its municipal water supply from the Saluda River. The filter plant is capable of supplying water at a maximum rate of 5.2 million gallons per day, with an average demand of 2.6 million gallons. Treated water storage consists of 1.5 million gallons in 3 elevated tanks and 2.5 million gallons in 4 clear wells.

Analysis of water supplied in the community:

Total solids	62 mg/L
Alkalinity	34 mg/L
Calcium	4 mg/L
Hardness	34 mg/L
Iron	0.1 mg/L
pH	7.9

SEWER

Newberry utilizes an activated sludge plant that has a design capacity of 3.2 million gpd with an average demand of 2.3 million gpd.

LABOR

Because labor information may change in this area, a current labor availability report prepared and kept up to date by the S. C. State Development Board will be furnished to prospective manufacturers at their request. The comprehensive report will include sources of recruitable labor, labor force characteristics, work force skill levels, earnings data and other pertinent information. The S. C. State Board for Technical and Comprehensive Education has the resources to recruit and train workers in accordance with a company's entry criteria. This training is at little or no cost to the employer. A lead-time schedule is developed to coordinate recruiting, testing, selecting, and training. This assures that persons will be able to move

from training to their respective jobs at the time the plant is ready for initial production.

TRANSPORTATION

Newberry is served by one interstate highway, I-26 (4 miles), two United States highways and 10 South Carolina highways. The community is served by two railroads: The Seaboard Systems and the C, N&L (a branch of the Norfolk Southern Railway System). Newberry has 34 authorized motor carriers to serve the community.

Freight Delivery Times:

To:	By Rail:	By Truck:
Atlanta	3 days	1 day
Boston	6 days	4 days
Chicago	6 days	3 days
Houston	9 days	2 days
New York	4 days	3 days
St. Louis	6 days	2 days
San Francisco	12 days	5 days

The Columbia Metropolitan Airport, 42 miles from the community, offers regularly scheduled commercial airline service on Delta, Eastern, Piedmont and Bankair and a modern air freight terminal. Private aircraft use the Newberry Municipal Airport, two miles away, which has a paved and lighted 3,500-foot runway. Services available at the local airport are flight instruction, rental, Unicom, major airframe repairs, 80 fuel, RBn and Vortac.

FOREIGN TRADE ZONE

There is a Foreign Trade Zone located in Charleston,

South Carolina, 153 miles away. The Foreign Trade Zone allows manufacturers to store, manufacture, or process goods without paying U.S. Customs duties or worrying about quota compliance. This Foreign Trade Zone is served by a multi-mode transportation network which provides excellent accessibility to market areas.

TAXES

The assessment on industrial property in South Carolina is 10.5% of the market value. New industry is granted a five-year moratorium on general county taxes (with the exception of school taxes). The city tax rate is \$5.50 per \$100 of assessed value. The county rate is \$11.90 per \$100 of assessed value. The effective city tax rate (tax liability per \$100 of market value) is \$.58. The effective county rate is \$1.25. The state has no tax on a manufacturer's inventories, goods-in-process, raw materials or finished goods. Treatment facilities or equipment of manufacturing plants which control water or air pollution are exempt from all property taxation.

INDUSTRIAL SITES

Industrial sites are available in Newberry with a wide range of geographic and topographic features. In all probability, a site that will meet the needs of most industries' requirements has been identified, catalogued, and entered into the State Development Board's Computerized Site Selection System. Detailed site information is available and will be furnished upon request.

MAJOR EMPLOYERS

Name	Product or Service	Employees
Champion Building Products	Plywood, lumber	600
Damon International	Dress & sport shirts	450
Forest Products Corp.	Corrugated containers	137
Kendall Co.	Cheesecloth, diapers, tobacco fabrics	572
Norris-Ni Industries	Wheel covers — automobile industry	450
Shakespeare	Glass fiber, electric utility products	125

For Additional Information Contact:

SOUTH CAROLINA STATE DEVELOPMENT BOARD
P. O. Box 927, Columbia, South Carolina 29202
(803) 758-3145

