

P9606

1,985
Copy 3

One Hundred and Seventh Annual Report

of the

**Public Service Commission
of South Carolina**

1984-1985

FRED A. FULLER, JR., Chairman
CECIL A. BOWERS, Vice Chairman
RUDOLPH MITCHELL
MARJORIE AMOS-FRAZIER
CAROLINE H. MAASS
HENRY G. YONCE
GUY BUTLER

Commissioners

S. C. STATE LIBRARY

APR 8 1986

STATE DOCUMENTS

JAMES H. STILL, Executive Director
ARTHUR G. FUSCO, General Counsel
A. R. GRIFFIN, Director Transportation Division
OSCAR E. COATES, Asst. Director Transportation Division
CHARLES W. BALLENTINE, Director Utilities Division
W. HAROLD GOODING, Assistant Director Utilities Division

PRINTED UNDER THE DIRECTION OF THE
STATE BUDGET AND CONTROL BOARD

One Hundred and Seventh Annual Report

of the

**Public Service Commission
of South Carolina**

1984-1985

FRED A. FULLER, JR., Chairman
CECIL A. BOWERS, Vice Chairman
RUDOLPH MITCHELL
MARJORIE AMOS-FRAZIER
CAROLINE H. MAASS
HENRY G. YONCE
GUY BUTLER

Commissioners

JAMES H. STILL, Executive Director
ARTHUR G. FUSCO, General Counsel
A. R. GRIFFIN, Director Transportation Division
OSCAR E. COATES, Asst. Director Transportation Division
CHARLES W. BALLENTINE, Director Utilities Division
W. HAROLD GOODING, Assistant Director Utilities Division

**PRINTED UNDER THE DIRECTION OF THE
STATE BUDGET AND CONTROL BOARD**

LETTER OF TRANSMITTAL

OFFICE OF PUBLIC SERVICE COMMISSION

To His Excellency, Richard W. Riley, Governor of South Carolina:

Sir:

We have the honor to transmit herewith the One Hundred and Seventh Annual Report of the Public Service Commission of South Carolina for the year ending June 30, 1985.

Yours respectfully,

FRED A. FULLER, JR., Chairman
CECIL A. BOWERS, Vice Chairman
RUDOLPH MITCHELL
MARJORIE AMOS-FRAZIER
CAROLINE H. MAASS
HENRY G. YONCE
GUY BUTLER
Commissioners

JAMES H. STILL
Executive Director

**ANNUAL REPORT OF THE PUBLIC SERVICE
COMMISSION OF SOUTH CAROLINA**

To the General Assembly of South Carolina:

The Public Service Commission has the honor to respectfully submit for your consideration this its One Hundred and Seventh Annual Report.

Below is the personnel of the present Commission and the Counties comprising the districts:

First District

Marjorie Amos-Frazier Charleston, S. C.
Beaufort, Berkeley, Charleston, Colleton, Dorchester, Hampton,
Jasper

Second District

Henry G. Yonce Columbia, S. C.
Allendale, Bamberg, Barnwell, Calhoun, Lexington, Orangeburg,
Richland

Third District

Guy Butler Greenwood, S. C.
Abbeville, Anderson, Aiken, Edgefield, Greenwood, McCormick,
Newberry, Oconee, Pickens, Saluda

Fourth District

Fred A. Fuller, Jr., Chairman Greenville, S. C.
Greenville, Spartanburg

Fifth District

Cecil A. Bowers, Vice Chairman Camden, S. C.
Cherokee, Chester, Chesterfield, Fairfield, Kershaw, Lancaster,
Laurens, Sumter, Union, York

Sixth District

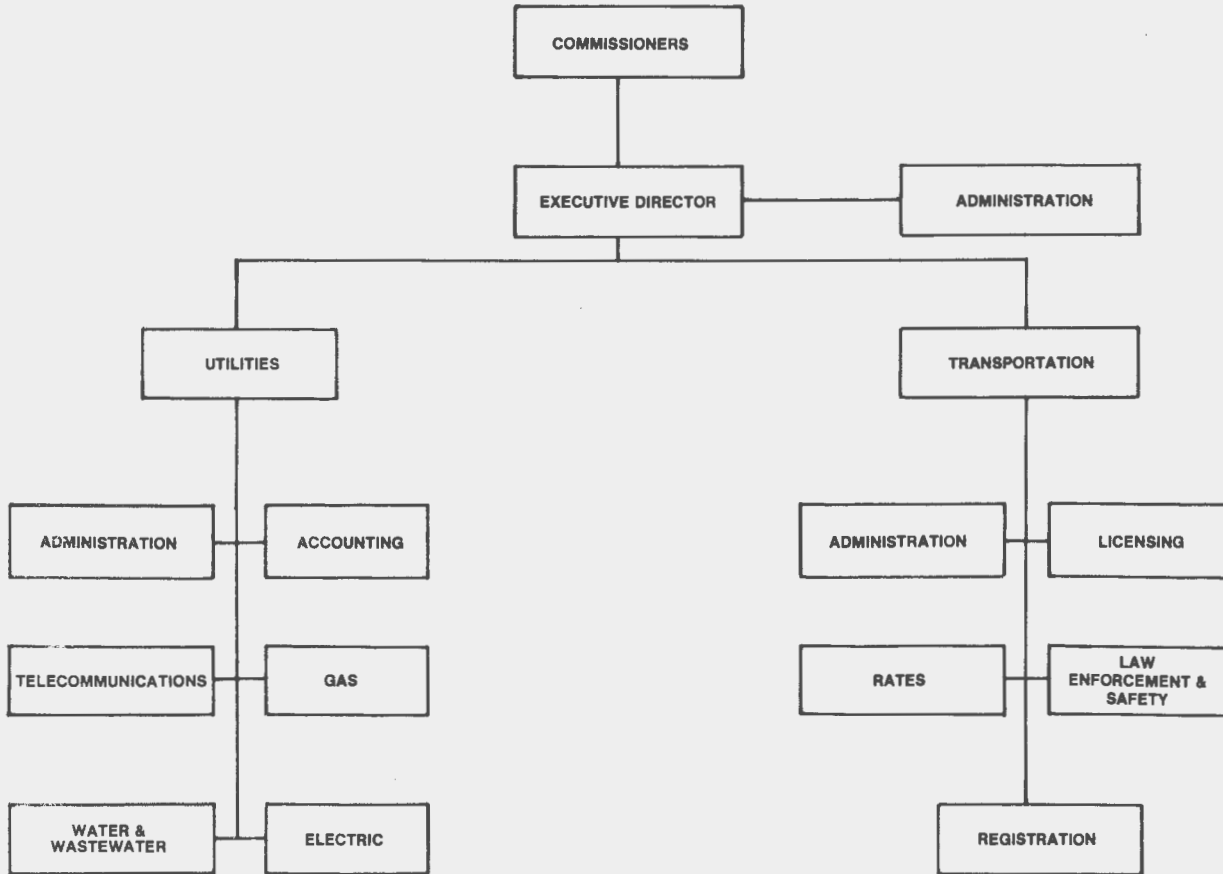
Caroline H. Maass Andrews, S. C.
Clarendon, Darlington, Dillon, Florence, Georgetown, Horry,
Marion, Marlboro, Lee, Williamsburg

At-Large

Rudolph Mitchell Saluda, S. C.
Statewide

TABLE OF CONTENTS

	PAGE
Commissioners	3
Organizational Chart	5
Summary of Expenditures	6
Introduction	6
Utilities Division:	
Administration	8
Accounting Department	9
Electric Department	26
Gas Department	42
Telecommunications Department	52
Water and Wastewater Department	59
Transportation Division:	
Administration	69
Certificate Department	69
Enforcement and Safety Department	72
Insurance Department	78
Licensing Department	79
Rails and Tariffs Department	86
Registration Department	87



SUMMARY OF EXPENDITURES

<i>A. EXPENDITURES</i>	
I. Administration	\$1,095,379
II. Utilities	1,308,047
III. Transportation	1,807,827
IV. Employer Contributions	621,446
<i>GRAND TOTAL (PUBLIC SERVICE COMMISSION)</i>	<i>\$4,832,699</i>
 <i>B. SOURCE OF FUNDS</i>	
I. State Appropriations:	
A. Balance from Prior Year	\$ -0-
B. General Appropriation Act	4,991,817
C. Less	
Budget and Control Board Reduction	
Lapsed	182,638
Carried Forward	-0-
Total State Appropriation	\$4,809,179
II. Departmental Revenue:	
A. Federal Funds	\$ 23,520
B. Other Funds	-0-
<i>TOTAL FUNDS</i>	<i>\$4,832,699</i>

Utility regulation in South Carolina had its beginning with the passage of an Act by the 1878 General Assembly, creating a Railroad Commission for the purpose of regulating railroads operating within the State. The first Commissioner was appointed December 24, 1878, by the then Governor Wade Hampton.

The General Assembly in 1910 established a Public Service Commission, empowering it with the authority to "fix and establish in all cities of this State rates and charges for the supply of water, gas or electricity furnished by any person, firm or corporation to such cities, the inhabitants thereof, and to prescribe penalties."

The 1922 General Assembly combined the two three-man commissions and added one additional Commissioner to form the present seven-man Commission. The name was changed in 1934 to The Public Service Commission.

The present Commission is elected by the Joint Assembly for a term of four years, one from each of the six Commission Districts and one Commissioner at-Large.

Authority vested in this body by Statute is to:

1. Regulate and supervise the privately-owned electric utilities as to their rates, charges, services, facilities, practices, accounting procedures, the purchase, sale or lease of utility property and the issuance of securities, as well as administer the Rural Electric Cooperative Act pertaining to territorial boundaries and also administer the Utility Facility Siting and Environmental Protection Act.

2. Approve rates and supervise services of all privately and publicly-owned telephone and telegraph companies as well as radio common carrier companies within the State.

3. Regulate rates and charges, services, facilities, practices and accounting procedures of all intrastate privately-owned gas, water and sewerage companies, and administer the Gas Safety Act enacted by the 1970 General Assembly.

4. Supervise and regulate for-hire motor carriers of persons and property as to authorities, rates, services, charges, schedules, insurance, safety, practices and facilities. Consider applications for Certificates of Public Convenience and Necessity, revoke and suspend same for cause. The Registration and Safety Act, as passed by the 1970 General Assembly, is also administered by this agency. Enforcement of the rules and regulations of the Transportation Division is carried out by uniformed Inspectors in marked patrol cars throughout the State.

During the past fiscal year, the Transportation Division dispensed license tags to 12,319 operating units varying in price from \$7.50 to \$125.00 each, according to payload. The various fees assessed produced a revenue of \$1,098,605.42.

As of Dec. 31, 1984, fifty-seven electric, gas, telephone, telegraph, and radio common carrier utilities were operating within the State with a total plant investment of 7.7 Billion Dollars generating gross revenues of 3.3 Billion Dollars. The 147 water and sewerage companies operating within the State generated 9.0 Million Dollars of gross revenue.

From the tremendous growth of industry in the State in the past several years, coupled with the expanding economy, as evidenced by the above figures, conservative projections indicate that utility installations will more than double within the next ten years. During the past fiscal year, the Commission processed six hundred and sixty-two (662) applications; hearings were held thereon when necessary, and Orders issued.

UTILITIES DIVISION

The function of the Utilities Division of the Public Service Commission is to perform the necessary duties related to the regulation of utilities under the jurisdiction of the Commission. The management staff plans, coordinates, directs and supervises the work of its five departments as shown below:

- I. Accounting Department
- II. Electric Department
- III. Gas Department
- IV. Telecommunications Department
- V. Water and Wastewater Department

The activities of this Division for the fiscal year 1984-1985, affecting the various utility groups, are summarized by each Department on the following pages of this report. Eight hundred and four orders were issued through this Division during the fiscal year, and public hearings were held in connection with one hundred of these.

I. ACCOUNTING DEPARTMENT

The Accounting Department is composed of eighteen Accountants who report to the Accounting Manager.

The Accounting Department's primary function is to examine the books and records of Utility Companies which are requesting an increase or change in rates. A Rate Case examination implements principles and procedures based upon regulatory laws and in this respect differs from audits conducted by a Utility Company's Public Accountants. After the examination, the Staff makes adjustments in the Company's operations to achieve a "normalized" test year. Staff's Exhibits and Testimony are directed toward the Company's operations and Staff's Adjustments. Based on the Staff's report and Company information the Commissioners are able to determine an equitable rate of return on the Company's investment.

The Staff also insures that proper cutoffs of the test year are implemented as well as substantiating that revenues, expenses, and rate items are allocated according to proper jurisdiction. Employing these procedures, Staff verifies the Utility's operations and verifies the books and records to the filing and related Exhibits.

Emphasis is placed upon policies and procedures and the instructions thereto, as stated in the Chart of Accounts for the various types of Utilities. The Chart of Accounts outlines which revenues, expenses, and asset accounts that will ultimately determine the Utilities' Rate of Return on Rate Base.

After completing the examination, a Report is prepared with Exhibits and a written explanation of each of the Exhibits. Copies are distributed to each Commissioner, the Company, Intervenors, members of the Staff, and other Parties of Record. A member of the Staff will testify and submit the Report into evidence during the Hearing.

The Department also reviews the changing prices attributable to fuel prices. Specifically electric companies utilize a fuel adjustment clause and gas companies use a purchased gas adjustment clause. The Department semiannually monitors fuel costs, performs audits, prepares reports and participates in formal hearings before the Commission centering around escalating fuel costs. Audits related to refunds from gas suppliers back to S. C. jurisdictional ratepayers are also conducted. Accounting Personnel employ the computer software mentioned above after sampling parameters are established by the lead auditor.

The Accounting Department administers the Gross Receipts Tax for Regulatory Expenses paid on an annual basis by the Utilities serving customers in South Carolina. The Utilities are required to report their Revenues received with the State. Tax Assessments are based on these Revenues.

UTILITIES DIVISION
ACCOUNTING DEPARTMENT
AUDITS PERFORMED
YEAR ENDED JUNE 30, 1985

Description	Number
I. Gas Companies	
Rate Cases	
Peoples Natural Gas Company	1
Compliance Audits	
Piedmont Natural Gas Company	1
South Carolina Electric and Gas Company	1
Rate Reduction	
South Carolina Electric and Gas Company	1
United Cities Gas Company	1
Explorations	
Piedmont Natural Gas Company	2
United Cities Gas Company	2
Refunds	
Carolina Pipeline	3
Piedmont Natural Gas Company	1
South Carolina Electric and Gas Company	2
Special Audits	
South Carolina Electric and Gas Company	1
II. Electric Companies	
Rate Cases	
Carolina Power and Light Company	1
Fuel Hearings	
Carolina Power and Light Company	2
Duke Power Company	2
South Carolina Electric and Gas Company	2
Special Audits	
South Carolina Electric and Gas Company	1
Refunds	
South Carolina Electric and Gas Company	1

III. Telephone

Rate Cases

Continental Telephone	1
General Telephone Company of the Southeast	1
Southern Bell Telephone & Telegraph Company ..	1

Compliance Audits

AllTel-South Carolina, Inc.....	1
American Telephone and Telegraph Company	1
Fort Mill Telephone	1
Hargray Telephone Company	1
Home Telephone Company	1
Lancaster Telephone	1
Palmetto Rural Telephone	1
Rock Hill Telephone	1
United Telephone Company of the Carolinas	3

Asset Transfer

Deregulation of Customer Premise Equipment	1
Southern Bell Telephone and Telegraph	1

Special Audit

Bellcore	1
Southern Bell Telephone and Telegraph	1

IV. Mobile Phone

Compliance Audits

Morris Communications	1
-----------------------------	---

V. Water and Sewer Companies

Rate Cases

B & B Water Works	1
Dunmovin Utilities	1
Fripp Island Utilities	1
Hilton Head Island Utility	1
Kiawah Island Utility	1
Tega Cay Utilities, Inc.	1
Tranquil Utilities, Inc.	1

Compliance Audits

Anco Utilities, Inc.	1
Blacksgate-East Water System	1
Buckeye Water and Sewer Company	1
Bush River Utilities, Inc.	1
Business Brokers of the South	1

Edenwood Water Company, Inc.	1
Elgin Estates Water Corporation	1
Fairlawn Utilities, Inc.	1
General Utilities, Inc.	1
Hallmark Shores Water Company	1
Hermitage Water Systems, Inc.	1
Lake Murray Utilities, Inc.	1
Midlands Utilities, Inc.	1
Oak Grove Estates Utility, Inc.	1
Pilot Corporation	1
Quail Hollow Company	1
Shelley Enterprises, Inc.	1
Stephenson Finance, Inc.	1
Utilities, Inc.	1
Valhalla Company	1
Wildewood Utilities, Inc.	1
Woodland Utilities, Inc.	1

VI. Transportation

Rate Cases

General Commodities	1
Liquid Petroleum Gas	1

Compliance Audits

A-1 Transfer and Storage, Inc.	1
A and B Trucking Inc.	1
Barbara C. Ard	1
Arrow Moving and Storage Inc.	1
Aultman Trucking Co., Inc.	2
Azalea Moving & Storage Inc.	1
Bettie Bacot Homes Inc.	1
Bivens Moving & Storage	2
Bowman Gin Company Inc.	1
Henry L. Branning, Sr. and Henry L. Branning, Jr. DBA Branning and Son	1
Brock Moving and Storage Co., Inc.	1
Bryson Industrial Services, Inc.	1
Builders Transport, Inc.	1
Caston M. Davis DBA Camden Recycle	1
Carolina Mobile Homes Services Inc.	1
Bobby Catoe DBA B. L. Catoe Trucking Co.	1
Chason Trucking Co., Inc.	1
Checker Parcel Services, Inc.	1
D and W Mobile Home Movers, Inc.	1

St. Julian Devine	1
Dorchester Mobile Homes	1
Escue Warehouse Co., Inc.	1
Joel Grubb DBA G & S Transport	1
Green's Moving and Storage	1
Ben Griffin DBA Griffin Trucking	2
Fred Hayes Mobile Home Moving	1
Heckle's Moving & Storage Inc.	1
J & C Moving & Storage Inc.	1
Jackson Enterprises of Sumter, Inc.	1
W. M. Jackson Jr. DBA Jackson's Transfer	1
Sammie James, III.	1
Johnson Moving Services, Inc.	1
Keene Transport Inc.	1
M. L. King & Sons Inc.	1
M & M Transfer Inc.	1
Charles R. McElhaney	1
Morris Van Lines, Inc.	1
Jack Pagett DBA Pagett's Mobile Home Transport	1
Palmetto Moving & Storage Inc.	1
Calvin L. Osteen DBA Piedmont Transfer and Storage Company	1
R & S Mobile Home Movers	1
Ricky Cary Jones and S. C. Jones DBA SCJ Mobile Home Service and Repair	1
Charles H. Powers DBA Salvage Disposal Company	1
The Herman L. Shealy Co., Inc.	1
Singleton Moving and Storage Inc.	1
Jerry T. Goodwin and Linda L. Goodwin DBA Southern Sales Company	1
Stanton Cleaning, Inc.	1

The Accounting Department has prepared tables showing Operating Revenues, Operating Expenses, Net Operating Income, State and Local Taxes Paid, and Gross Plant in Service for Electric and Gas Utilities for the years 1981-1984. Operating Revenues, Operating Expenses, Net Operating Income, and Gross Plant in Service is shown for Telephone Utilities for the years 1983-1984 and for Mobile Communications Companies for the year 1984. Operating Revenues, Operating Expenses, and Net Operating Income are shown for Water and Sewerage Utilities for the year 1984.

The Tables are as follows:

TABLE A — Privately Owned Electric Utilities Operating in South Carolina. Selected Statistics for South Carolina only. For the Years Ended December 31, 1981-1984.

TABLE B — Gas Utilities Operating in South Carolina. Selected Statistics for South Carolina only. For the Fiscal and Calendar Years Ended 1981-1984.

TABLE C — Telephone and Telegraph Utilities Operating in South Carolina. Selected Statistics for South Carolina only. For the Years Ended December 31, 1983-1984.

TABLE D — Mobile Communications Utilities in South Carolina. Selected Statistics for South Carolina only. For Fiscal and Calendar Year 1984.

TABLE E — Water Utilities Operating in South Carolina. Selected Statistics for South Carolina only. For Fiscal and Calendar Year 1984.

TABLE F — Sewerage Utilities Operating in South Carolina. Selected Statistics for South Carolina only. For Fiscal and Calendar Year 1984.

TABLE A

**PRIVATELY-OWNED ELECTRIC UTILITIES OPERATING IN SOUTH CAROLINA
SELECTED STATISTICS FOR SOUTH CAROLINA ONLY
FOR THE YEARS ENDED DECEMBER 31, 1981-1984**

Company	Gross Operating Revenues	Operating Expenses	Net Operating Income	Total State And Local Taxes Paid	Gross Plant In Service
	\$	\$	\$	\$	\$
Carolina Power and Light Company					
1981	219,465,755	172,773,257	46,692,498	6,570,063	459,892,657
1982	233,209,873	205,516,225	27,693,648	9,194,310	495,176,497
1983	269,890,955	217,386,905	52,504,050	10,222,171	561,932,108
1984	286,403,249	229,281,662	57,121,587	9,367,344	615,172,448
Clinton Mills, Inc.					
1981	241,569	254,894	(13,325)	252	314,309
1982	272,476	302,663	(30,187)	242	318,237
1983	261,566	306,730	(45,164)	273	318,237
1984	274,872	315,631	(40,759)	270	318,237
Duke Power Company					
1981	585,661,000	495,522,000	90,139,000	31,963,696	1,567,345,000
1982	650,554,000	539,867,000	110,687,000	23,479,957	1,568,497,000
1983	674,366,000	560,155,000	114,211,000	28,342,392	1,721,810,000
1984	794,327,000	637,398,000	156,929,000	38,846,735	2,072,619,000

Company	Gross Operating Revenues	Operating Expenses	Net Operating Income	Total State And Local Taxes Paid	Gross Plant In Service
	\$	\$	\$	\$	\$
Heath Springs Light and Power Company					
1981	543,947	547,265	(3,318)	11,498	419,038
1982	641,548	623,633	17,915	11,789	444,403
1983	688,781	672,049	16,732	13,069	466,017
1984	661,537	648,180	13,357	17,311	468,074
Lockhart Power Company					
1981	8,915,412	8,628,510	286,902	172,570	11,082,155
1982	9,007,902	8,395,961	611,941	183,838	11,375,186
1983	9,779,354	9,264,467	514,887	221,261	11,630,558
1984	9,854,477	9,152,685	701,792	213,010	12,080,486
South Carolina Electric & Gas Company					
1981	569,090,447	453,929,875	115,160,572	28,120,844	1,194,431,647
1982	590,044,479	448,398,150	141,646,329	29,245,002	1,236,928,849
1983	634,126,807	495,217,738	138,909,069	28,208,322	1,290,303,723
1984	746,745,280	573,920,749	172,824,531	32,474,730	2,354,870,325
Totals					
1981	1,383,918,130	1,131,655,801	252,262,329	66,838,923	3,233,484,806
1982	1,483,730,278	1,203,103,632	280,626,646	62,115,138	3,312,740,172
1983	1,589,113,463	1,283,002,889	306,110,574	67,007,488	3,586,460,643
1984	1,838,266,415	1,450,716,907	387,549,508	80,919,400	5,055,528,570

TABLE B

**GAS UTILITIES OPERATING IN SOUTH CAROLINA
SELECTED STATISTICS FOR SOUTH CAROLINA ONLY
FOR THE YEARS ENDED DECEMBER 31, 1981-1984**

Company	Gross Operating Revenues	Operating Expenses	Net Operating Income	Total State And Local Taxes Paid	Gross Plant In Service
	\$	\$	\$	\$	\$
Carolina Natural Gas Corporation					
1981	14,986,243	14,174,592	811,651	191,576	13,408,528
1982	9,769,268	9,217,617	551,651	201,984	14,252,433
1983	17,959,187	17,028,000	931,187	(634,597)	15,175,654
1984	19,930,655	18,179,545	1,751,110	458,500	15,971,335
Carolina Pipeline Company					
1981	133,965,788	128,801,892	5,163,896	976,729	38,018,325
1982	76,292,272	73,254,723	3,037,549	1,563,385	39,633,549
1983	109,062,732	107,315,776	1,746,956	(1,014,907)	40,018,805
1984	126,813,780	122,406,678	4,407,102	917,958	43,132,985
Peoples Natural Gas Company of South Carolina					
1981	14,811,932	14,445,859	366,073	184,253	6,036,391
1982	15,930,746	15,559,073	371,673	246,837	7,229,503
1983	17,008,275	16,411,455	596,820	261,417	8,037,367
1984	16,631,256	16,175,964	455,292	810,764	8,988,457

Company	Gross Operating Revenues	Operating Expenses	Net Operating Income	Total State And Local Taxes Paid	Gross Plant In Service
	\$	\$	\$	\$	\$
Piedmont Natural Gas Company					
1981	78,065,316	73,790,572	4,274,744	1,331,966	54,818,590
1982	78,822,081	74,632,132	4,189,949	1,443,450	57,418,362
1983	82,912,745	77,717,068	5,195,677	1,805,699	57,778,963
1984	93,577,675	88,211,123	5,366,552	1,762,990	60,795,658
South Carolina Electric & Gas Company					
1981	188,167,415	183,577,562	4,589,853	6,201,344	150,669,411
1982	266,388,612	257,332,654	9,055,958	5,397,752	210,397,803
1983	337,282,519	323,416,803	13,865,716	5,513,846	221,615,827
1984	378,490,955	349,235,851	29,255,104	7,686,763	282,389,782
United Cities Gas Company					
1981	6,926,402	6,439,222	487,180	120,132	3,436,159
1982	6,594,270	6,319,066	275,204	122,870	3,692,376
1983	7,946,040	7,486,445	459,595	132,810	3,853,447
1984	8,696,124	8,258,014	438,110	71,191	4,243,660
Totals					
1981	436,923,096	421,229,699	15,693,397	9,006,000	266,387,404
1982	453,797,249	436,315,265	17,481,984	8,976,278	332,624,026
1983	572,171,498	549,375,547	22,795,951	6,064,268	346,480,063
1984	644,140,445	602,467,175	41,673,270	11,708,166	415,521,877

TABLE C

**TELEPHONE AND TELEGRAPH UTILITIES OPERATING IN SOUTH CAROLINA
SELECTED STATISTICS FOR TOTAL SOUTH CAROLINA OPERATIONS
FOR THE YEARS ENDED DECEMBER 31, 1983-1984**

Company	Gross Operating Revenues 1984	Operating Expenses 1984	Net Operating Income (Loss) 1984	Gross Plant In Service 1984
	\$	\$	\$	\$
AllToll South Carolina, Inc. ⁽²⁾	9,171,624	6,468,331	2,703,293	34,077,797
Bluffton Telephone Company	1,560,884	1,093,740	467,144	4,647,982
Chesnee Telephone Company, Inc.	1,200,501	978,849	221,652	4,718,880
Chester Telephone Company	5,249,505	4,060,187	1,189,318	16,491,455
Continental Telephone Co. of S. C.	5,628,713	4,552,820	1,075,893	16,520,742
Farmers Telephone Corporation	16,254,515	12,772,949	3,481,566	75,772,446
Fort Mill Telephone Company	4,070,325	3,326,913	743,412	11,147,439
General Telephone Co. of Southeast	75,750,904	63,084,626	12,666,278	223,617,163
Hargray Telephone Company	15,551,155	11,270,382	4,280,773	38,766,536
Heath Springs Telephone Co.	298,152	220,039	78,113	880,983
Home Telephone Company	7,102,284	5,659,989	1,442,295	21,754,555
Horry Telephone Cooperative	11,972,828	8,553,188	3,419,640	48,381,204
Lancaster Telephone Company	8,410,104	6,782,091	1,628,013	21,808,556
Lockhart Telephone Company	187,103	150,841	36,262	589,542
McClellanville Telephone Company	581,263	469,140	112,123	1,918,962
Mid-Carolina Telephone ⁽³⁾				
Norway Telephone Company ⁽⁴⁾	N/A	N/A	N/A	N/A
Palmetto Telephone Cooperative	3,696,133	1,976,722	1,719,411	20,329,994
Piedmont Telephone Cooperative	2,960,753	2,396,839	563,914	16,222,158
Pond Branch Telephone Company	3,149,247	2,647,700	501,547	12,737,135
Ridge Telephone Company	451,671	382,104	69,567	1,852,373
Ridgeway Telephone Company	472,736	354,627	118,109	1,742,998
Rock Hill Telephone Company	19,199,655	15,458,697	3,740,958	41,948,004
Sand Hill Telephone Company	4,082,508	2,317,027	1,765,481	16,423,195
Southern Bell Telephone & Telegraph	541,327,069	436,757,334	104,569,735	1,487,764,875
St. Matthews Telephone Company	1,547,341	1,186,021	361,320	6,405,884
St. Stephen Telephone Company	1,607,087	1,201,346	405,741	5,787,391
Telecommunications Systems, Inc. ⁽⁵⁾				
United Telephone of the Carolinas	40,573,931	32,675,917	7,898,014	115,947,683
West Carolina Rural Telephone Co-op.	2,401,269	1,599,007	802,262	13,658,944
Williston Telephone Company	1,653,252	1,352,523	300,729	7,187,517
TOTALS	786,112,512	629,749,949	156,362,563	2,269,102,393

⁽²⁾ South Carolina Telephone Corporation in 1982⁽³⁾ Mid Carolina merged with AllToll South Carolina, Inc.⁽⁴⁾ Information is not available⁽⁵⁾ Have not received the annual report

TABLE D

**MOBILE COMMUNICATIONS OPERATING IN SOUTH CAROLINA
SELECTED STATISTICS FOR SOUTH CAROLINA OPERATIONS ONLY
FOR THE YEAR ENDED DECEMBER 31, 1984**

Company	Gross Operating Revenues	Operating Expenses	Net Operating Income (Loss)	Gross Plant In Service
	\$	\$	\$	\$
Able Communications, Inc.	N/A	N/A	N/A	N/A
Asta, Inc.	349,399	353,216	(3,817)	244,075
Camden Mobile Communications, Inc.	N/A	N/A	N/A	N/A
Columbia Telephone Answering Service	N/A	N/A	N/A	N/A
Eagle Communications, Inc.	93,742	65,096	28,646	166,381
Evans Communications, Inc.	N/A	N/A	N/A	N/A
Georgia Paging Company ⁽¹⁾	N/A	N/A	N/A	N/A
Marcom Systems, Inc.	N/A	N/A	N/A	N/A
Mobile Phone of Charleston, Inc.	196,042	368,249	(172,207)	188,866
Morris Communications, Inc.	3,045,568	2,778,393	267,175	3,187,125
National Page, Inc.	195,734	204,477	(8,743)	653,529
Parker Electronics	174,370	175,508	(1,138)	126,785
Rock Hill Mobile Communications, Inc.	N/A	N/A	N/A	N/A
Telepage of Beaufort, Inc.	25,714	40,180	(14,466)	33,056
Telepage Communications	<u>1,302,823</u>	<u>1,564,651</u>	<u>(261,828)</u>	<u>2,079,561</u>
TOTALS	<u>5,383,392</u>	<u>5,549,770</u>	<u>(166,378)</u>	<u>6,679,378</u>

⁽¹⁾ Georgia and South Carolina Combined Operations
N/A -- Not Available

TABLE E

**WATER UTILITIES OPERATING IN SOUTH CAROLINA
SELECTED STATISTICS FROM
ANNUAL REPORTS — S. C. ONLY
FOR FISCAL AND CALENDAR YEAR, 1984**

Company	Gross	Operating	Net Operating
	Operating	Expense	Income or (Loss)
	Revenue		
	\$	\$	\$
A. D. Hare Water Works and Pump Service	59,608	63,666	(4,058)
1 Augusta Fields Utility System, Inc.	6,792	5,442	1,350
B & B Water Works, Inc.	N/A	N/A	N/A
Bobby Joe Solesbee Utility Corporation	N/A	N/A	N/A
Bobo Well and Pump Company	N/A	N/A	N/A
Blackgate East Water Systems Inc.	3,515	2,378	1,137
Blue Ribbon Water Corporation	N/A	N/A	N/A
2 Buckeye Water Co., Inc.	12,693	13,575	(882)
2 Carolina Water Service, Inc.	940,243	736,502	203,741
Clinton Mills, Inc.	18,956	90,670	(71,714)
Coates Road Water System, Inc.	1,344	1,884	(540)
2 Cornwell Land Company, Inc.	N/A	N/A	N/A
Crest Water Company	N/A	N/A	N/A
2 DeBordieu Corporation	18,598	19,850	(1,252)
Dinkins Water System	N/A	N/A	N/A
Duke Power Company	3,325,344	2,450,368	874,976
E & R Partnership	N/A	N/A	N/A
E. B. Stone Utility Company	N/A	N/A	N/A
Edenwood Water Company, Inc.	82,368	63,760	18,608
Elgin Estates-Water Corporation	636	3,125	(2,489)
Fairlawn Utilities, Inc.	2,195	2,847	(652)
Fork Shoals Water Works	N/A	N/A	N/A
2 Foxwood Utilities, Inc.	19,263	26,126	(6,863)
Gnato Acres	384	509	(125)
Graniteville Company	N/A	N/A	N/A
Hallmark Shores Water System	10,520	11,509	(989)
Hartwell Utilities, Inc.	14,233	29,390	(15,157)
Heater Utilities, Inc.	662,876	632,923	29,953
Hermitage Utility Company, Inc.	N/A	N/A	N/A
Hermitage Water Systems of Lexington, Inc.	2,258	1,231	1,027
2 Hilton Head Plantation Utilities, Inc.	273,025	317,920	(44,895)
Hilton Head Utilities, Inc.	26,420	69,351	(42,931)
Horse Island Service Corporation	2,763	5,644	(2,881)
Hughes Water Systems, Inc.	N/A	N/A	N/A
Hunters Glen Water System	8,163	26,478	(18,315)
Hyde Park Water Works	5,275	4,175	1,100
2 Island Utilities, Inc.	238,123	232,462	5,661
2 Isle of Palms Water Company, Inc.	336,713	289,463	47,250
Kelley, Inc.	N/A	N/A	N/A
2 Kiawah Island Utility Company, Inc.	N/A	N/A	N/A
Lake Chinquapin Water Commission, Inc.	N/A	N/A	N/A
Lake Murray Utilities, Inc.	7,998	7,582	416
Lake Murray Water and Sewer Corporation	N/A	N/A	N/A
2 Lockhart Power Company	92,846	85,628	7,218
2 Long Cove Club Utilities, Inc.	N/A	N/A	N/A
Lost Wilderness, Inc.	N/A	N/A	N/A
Mark Water Works, Inc.	N/A	N/A	N/A
McCombs Water System	-0-	-0-	-0-
Meadowbrook Water Works, Inc.	N/A	N/A	N/A
Mecklenburg Utilities, Inc.	N/A	N/A	N/A
Mitchell Saxon Water Systems	600	277	323
1 Mountain Bay Estates Utility Company, Inc.	71,620	87,756	(16,136)
Nicholson Water Company	3,325	3,029	296
2 Oak Grove Estates Utilities, Inc.	24,217	13,685	10,532
2 Old Barnwell Road Utility Company, Inc.	30,619	25,602	5,017
2 Pinedale Utility Company, Inc.	1,804	10,243	(8,439)
Porter Water Company	5,109	8,548	(3,439)
Rice Corporation	-0-	-0-	-0-
River Pines Water System, Inc.	9,596	7,572	2,024
Santee-Cooper Resort, Inc.	32,565	22,508	10,057

Company	Gross Operating Revenue	Operating Expense	Net Operating Income or (Loss)
	\$	\$	\$
Seabrook Utility Company	N/A	N/A	N/A
Smith Water Works	N/A	N/A	N/A
Southland Utilities, Inc.	17,312	19,615	(2,303)
Springlake Estates Water System	N/A	N/A	N/A
Stephenson Finance, Inc.	3,957	1,699	2,258
Taylor Waterworks, Inc.	N/A	N/A	N/A
2 Tega Cay Utilities, Inc.	N/A	N/A	N/A
Trans Tech, Inc.	N/A	N/A	N/A
Village Utilities, Inc.	N/A	N/A	N/A
Warren Norman & Company	N/A	N/A	N/A
Waterford, Inc.	N/A	N/A	N/A
1 Water Oak Utility Company, Inc.	73,028	55,369	17,659
Water Systems, Inc.	48,925	52,066	(3,141)
Wayne Environmentals, Inc.	N/A	N/A	N/A
Westover Water Company	N/A	N/A	N/A
West Side Water Company	N/A	N/A	N/A
Woodforest Utility Company, Inc.	15,050	14,521	529
Woodlawn Subdivision Water Company, Inc.	2,820	1,356	1,464
TOTALS	<u>6,513,699</u>	<u>5,518,304</u>	<u>995,395</u>

N/A – Not Available

1) – Combined Water and Sewerage

2) – Sewerage Operations reported separately

**SEWERAGE UTILITIES OPERATING
IN SOUTH CAROLINA
SELECTED STATISTICS FROM
ANNUAL REPORTS — S. C. ONLY
FOR FISCAL YEAR AND CALENDAR YEAR, 1984**

Company	Gross Operating Revenue	Operating Expense	Net Operating Income or (Loss)
	\$	\$	\$
Alpine Utilities, Inc.	525,714	660,988	(135,274)
Anco Utilities, Inc.	53,697	47,083	6,614
Archdale Utilities Corporation	N/A	N/A	N/A
Arlington Development Company	N/A	N/A	N/A
Artistic Builders, Inc.	17,075	18,383	(1,308)
Briarcliff Estates	N/A	N/A	N/A
Brookside Sewer District	39,625	13,831	25,794
Buckeye Sewer Co., Inc.	6,662	7,876	(1,214)
Bush River Utilities, Inc.	134,256	120,317	13,939
Business Brokers of the South, Inc.	4,108	11,759	(7,651)
2 Carolina Water Service, Inc.	N/A	N/A	N/A
Capital Utility Corporation	189,112	226,380	(37,268)
2 Cornwell Utility Corporation	N/A	N/A	N/A
Debordieu Corporation	16,738	19,366	(2,628)
Development Service, Inc.	98,982	91,227	7,755
East-Bluff Sewage Company, Inc.	N/A	N/A	N/A
Farrow Terrace Utility Company	N/A	N/A	N/A
Folly Utilities, Inc.	N/A	N/A	N/A
Fort Lawn Development Company, Inc.	4,265	9,094	(4,829)
2 Foxwood Utilities, Inc.	13,353	15,023	(1,670)
Fripp Island Sewer Systems, Inc.	49,255	94,534	(45,279)
General Utilities, Inc.	N/A	N/A	N/A
2 Graniteville Company, Inc.	N/A	N/A	N/A
Greystone Utility Corporation	39,872	38,691	1,181
Harkin Utility Service, Inc.	N/A	N/A	N/A
Hartwell Utilities, Inc.	N/A	N/A	N/A
Highland Forest Wastewater Treatment Plant ...	4,340	20,218	(15,878)
Hilton Head Plantation Utilities, Inc.	188,784	652,372	(463,588)
2 Island Utilities, Inc.	138,440	84,363	54,077
Isle of Palms Water Co.	336,713	289,463	47,250
Jackson Mills	2,970	-0-	2,970
2 Kiawah Island Utility, Inc.	N/A	N/A	N/A
Lakewood Development Inc.	1,948	2,793	(845)
Leesburg Utilities Company, Inc.	20,143	20,670	(527)
2 Lockhart Power Company	16,118	15,482	636
1 Locksley Hall, Inc.	N/A	N/A	N/A
2 Long Cove Club Utilities, Inc.	3,433	21,902	(18,469)
Lost Wilderness, Inc.	N/A	N/A	N/A
Matthews Realty, Inc.	N/A	N/A	N/A
Midlands Utility, Inc.	201,762	204,766	(3,004)
North Fall Acres Sewer System	N/A	N/A	N/A
2 North Pines Utility Company, Inc.	N/A	N/A	N/A
2 Oak Grove Estates Utilities, Inc.	17,340	12,025	5,315
Old Barnwell Road Utility Company, Inc.	46,951	50,954	(4,003)
Pilot Corporation	2,829	5,441	(2,612)
2 Pinedale Utility Company, Inc.	5,768	3,318	2,450
Pine Forest Utilities, Inc.	N/A	N/A	N/A
Pine Valley Estates Utility	N/A	N/A	N/A
Plaza Utilities Inc.	-0-	3,725	(3,725)
Quail Hollow Company	47,662	36,193	11,469
R & R Environmental Systems	N/A	N/A	N/A
Ribaut Insurance Agency, Inc.	3,319	10,112	(6,793)
Rice Corporation	144	-0-	144
Rock Springs Development Corporation	N/A	N/A	N/A
S. C. Utilities, Inc.	N/A	N/A	N/A

Company	Gross Operating Revenue	Operating Expense	Net Operating Income or (Loss)
	\$	\$	\$
Seabrook Utility Company	N/A	N/A	N/A
Shelley Enterprises, Inc.	N/A	N/A	N/A
Stratton Hall Wastewater, Inc.	N/A	N/A	N/A
Tall Pines Utilities Corporation	N/A	N/A	N/A
2 Tega Cay Utilities, Inc.	N/A	N/A	N/A
Terraceway Service Corporation	75,982	105,617	(29,635)
Twin Lakes of Sumter, Inc.	5,526	16,622	(11,096)
Utilities, Inc.	37,772	29,412	8,360
Valhalla Company	64,839	23,663	41,176
Water Oak Utility Company, Inc.	73,028	55,369	17,659
Wayne Environmentals, Inc.	N/A	N/A	N/A
Wildwood Utilities, Inc.	N/A	N/A	N/A
Woodforest Utility Company, Inc	9,907	9,789	118
Woodland Utilities, Inc.	50,153	45,339	4,814
TOTALS	<u>2,548,585</u>	<u>3,094,160</u>	<u>(545,575)</u>

N/A – Not Available

2) – Water Operations reported separately.

II. ELECTRIC DEPARTMENT

The Electric Department, operating through the Utilities Division, is responsible for providing the Commission with data and information necessary for the regulation of all privately-owned electric utilities operating in South Carolina. This regulation of the electric utilities is designed to provide adequate service at reasonable rates to the people of South Carolina while assuring that these utilities are provided an opportunity to earn a reasonable rate of return on the fair values of properties devoted to the public service.

The Electric Department also handles service and high bill complaints and during the fiscal year 871 formal complaints were investigated. Numerous other complaints and requests for information were received over the telephone and were handled without formal investigation.

Since its installation in 1976, the toll-free telephone line provided by the Commission has provided a means for customers throughout the entire State to contact their Commissioner or a member of the Commission Staff to discuss problems, complaints or to request information. During 1984 this was a valuable asset not only to provide the customer easy access, but also to provide the Commission with a consumer's view of what is happening across the State with the electric utility business.

Carolina Power and Light Company, Duke Power Company, and South Carolina Electric and Gas Company, the three major utilities serving the State, are planning or building new generating plants, transmission and distribution lines so that adequate electric power will always be available for present customers and those who select to locate within the State.

South Carolina customers are receiving some power from the Clark Hill Project and the Hartwell Project through the transmission lines of the South Carolina Public Service Authority, Duke Power Company and South Carolina Electric and Gas Company.

The VACAR Group of the Southeastern Electric Reliability Council is a group of electric utilities operating in Virginia, North Carolina and South Carolina and include Carolina Power and Light Company, Duke Power Company, South Carolina Electric & Gas Company, South Carolina Public Service Authority, Virginia Electric & Power Company, as well as several smaller utilities. This Council was formed to increase reliability of bulk electric power supply of the area served and is one of the national groups which makes up several area councils. These companies exchange information on planning, construction, system loads and other matters affecting the bulk power supply within the area.

The South Carolina electric consumer, after having enjoyed continually decreasing costs from 1931 to 1969, has seen increases in rates throughout the 1970s and early 1980s. The price per KWH in 1982 was about equal to that experienced in 1933. The rapidly increasing cost of money, construction, fuel and other items which go into the cost of providing electric service have dictated the need for the Commission to grant rate increases to the utilities under its regulation. These increases are designed to insure that the Companies will be able to recover the cost to serve the increasing demand. The average South Carolina residential customer paid about 6.633 cents per KWH during 1984, a 10.59% increase over 1983 and compared to the national average of 7.53 cents per KWH.

A chart has been prepared comparing the residential electric consumption and the average price paid by the South Carolina consumers with the average consumption and price paid by the average United States consumer. This chart is printed on one of the following pages.

It is believed that good planning and management have provided South Carolina with adequate electric power in the past and that the organizations which generate and sell electric power in South Carolina will continue to provide adequate power at reasonable rates for the present and future needs of this State. Evidence of this is the fact that new generating facilities are presently under construction by both privately-owned and publicly-owned utilities within the State.

In an effort to reduce the need for more capital for new construction, and to conserve the energy sources we have, all three of the major utilities in the State are presently engaged in Load Management programs to decrease peak demands on the electric systems while providing adequate quality service to the customers. These programs are providing means to slow the rate of increase in the cost of electric service to the customer.

RATES

During 1984 the 739,330 residential customers in South Carolina served by the privately-owned electric utilities paid \$601,291,470 for 9,065,377,745 kilowatt-hours of electricity. The average South Carolina residential customer used 12,262 kilowatt-hours during the year for which he paid \$813.29, an average of 6.633 cents per kilowatt-hour, as compared to the average consumer in the United States who used 8,496 kilowatt-hours for which he paid \$640.12, an average rate of 7.53 cents per kilowatt-hour during 1984.

There are 3,316 large industrial customers of the privately-owned utilities in South Carolina who purchased 15,712,871,160 KWH at an average rate of 4.10 cents per KWH, a rate below the industrial power costs of a large portion of this Nation.

Industries now located within South Carolina and those desiring to move into the State will find that electric power can be secured throughout practically the entire State.

TERRITORIAL ASSIGNMENT ACT

The General Assembly passed the "Territorial Assignment Act" in 1969 and the Commission, pursuant to the Act has required all "electric suppliers" to file maps with the Commission showing rural electric lines in existence as of July 1, 1969. As of July 1, 1971, mylar maps of all counties in South Carolina had been filed with the Commission and negotiations between the "electric suppliers" was begun.

Territory in most all of South Carolina has been agreed upon by the "electric suppliers" and Orders approving the assignment of the territory have been issued by the Commission.

SITING ACT

The 1971 General Assembly passed an Act to give the Commission authority over "UTILITY FACILITY SITING AND ENVIRONMENTAL PROTECTION" effective January 1, 1972.

The three major utilities are now providing for the Commission, on an annual basis, a report containing a ten-year forecast of loads and resources including probable construction.

INSTALLED GENERATING CAPACITY IN SOUTH CAROLINA — JUNE 1985

	INSTALLED CAPACITY—KILOWATTS				
	Fossil Steam	Internal Combustion Turbine	Nuclear Steam	Hydro	Total
PRIVATELY OWNED					
Carolina Power & Light Company					
Darlington		729,987			729,987
H. B. Robinson	174,000	16,320	665,000		855,320
Total	174,000	746,307	665,000		1,585,307
Duke Power Company					
Boyd's Mill				960	960
Buzzard Roost		196,000		13,200	209,200
Catawba			1,145,000		1,145,000
Cedar Creek				39,500	39,500
Dearborn				35,600	35,600
Fishing Creek				42,200	42,200
Gaston Shoals				9,140	9,140
Great Falls				24,800	24,800
Holiday's Bridge				3,500	3,500
Jocassee				610,000	610,000
Keowee				140,000	140,000
Lee	370,000	90,000			460,000
Ninety Nine Islands				19,000	19,000
Oconee			2,580,000		2,580,000
Rocky Creek				27,000	27,000
Saluda				2,400	2,400
Urquhart		15,000			15,000
Wateree				71,500	71,500
Wylie				54,000	54,000
Total Duke Power Company	370,000	301,000	3,725,000	1,092,800	5,488,800
Lockhart Power Company					
Lockhart				12,300	12,300
South Carolina Electric & Gas Company*					
Burton		34,950			34,950
Canadys	430,000	16,470			446,470
Coit		39,270			39,270
Columbia				10,600	10,600
Faber Palace		11,150			11,150
Fairfield				511,200	511,200
Hagood	94,000				94,000
Hardeeville		16,070			16,070
McMeekin	252,000				252,000
Neal Shoals				5,200	5,200
Parr Shoals	28,000	74,500		14,880	117,380
Saluda				197,500	197,500
Stevens Creek				18,880	18,880
Summer			600,000		600,000
Urquhart	250,000	35,955			285,955
Wateree	720,000				720,000
Williams	580,000	59,900			639,900
Total South Carolina Electric & Gas Company	2,354,000	288,265	600,000	758,260	4,000,525
Total Privately-Owned Utilities	2,898,000	1,335,572	4,990,000	1,863,360	11,086,932

INSTALLED GENERATING CAPACITY IN SOUTH CAROLINA — JUNE 1985 — Continued

	INSTALLED CAPACITY—KILOWATTS				
	Fossil Steam	Internal Combustion Turbine	Nuclear Steam	Hydro	Total
PUBLICLY OWNED					
Abbeville Light & Water		1,000		2,800	3,800
S. C. Public Service Authority					
Cross	500,000				500,000
Georgetown	1,080,000				1,080,000
Grainger	163,000				163,000
Hilton Head		53,000			53,000
Jefferies	446,000			133,000	579,000
Myrtle Beach		111,000			111,000
Spillway				2,000	2,000
Summer			300,000		300,000
Total S. C. Public Service Authority	2,189,000	164,000	300,000	135,000	2,788,000
Total Publicly Owned	2,189,000	165,000	300,000	137,800	2,791,800
TOTALS	5,087,000	1,500,572	5,290,000	2,001,160	13,878,732

NOTES:

*S. C. E. & G. has a 6,000 KW portable gas-turbine driven generator available anywhere on system.
 Half of Clark Hill capacity of 280,000 KW (hydro) and half of Hartwell capacity of 264,000 KW (hydro) is allocated to preference customers in South Carolina.

RESIDENTIAL SERVICE PRIVATELY-OWNED ELECTRIC UTILITIES OPERATING IN SOUTH CAROLINA 1984

Company	Kilowatt Hours	No. of Customers	Revenues (\$)	Avg. Rate Cents Per KWH	KW-Hr. Per Custo- mer	Avg. Annual Bill (\$)
Carolina Power & Light Company .	1,354,291,000	107,414	90,535,547	6.685	12,608	842.87
Clinton Mills	4,434,605	597	268,892	6.063	7,428	450.41
Duke Power Co.	3,735,912,000	301,259	210,968,000	5.647	12,401	700.29
Heath Springs Light & Power Co. .	7,656,140	749	378,556	4.944	10,222	505.42
Lockhart Power Co. .	44,247,000	4,399	2,461,207	5.562	10,058	559.49
South Carolina Electric & Gas Co. .	3,918,837,000	324,912	296,679,268	7.571	12,061	913.11
Total	9,065,377,745	739,330	601,291,470	6.633	12,262	813.29

**SALE OF ELECTRIC POWER IN SOUTH CAROLINA
BY PRIVATELY-OWNED ELECTRIC UTILITIES
1984**

Class of Service	Kilowatt Hours Sold	No. of Customers	Revenue (\$)
Residential	9,065,377,745	739,330	601,291,470
Commercial and Small Power	6,579,953,493	114,149	389,838,023
Street Lighting	494,705,723	3,694	28,339,647
Industrial	15,712,871,160	3,316	644,404,385
Total Retail Sales	31,852,908,121	860,487	1,663,873,525
Municipal for Resale	2,297,781,000	20	92,076,960
REA Cooperatives	1,032,203,000	4	45,724,995
Total to Ultimate Customers	35,182,892,121	860,513	1,801,675,480
Other Electric Revenue	29,439,230
Total	35,182,892,121	860,513	1,831,114,710
*Other Electric Utilities			
Non-Associated	176,135,000	3	7,315,094

* These figures are included in Total Retail Sales.

DOMESTIC SERVICE STATISTICAL COMPARISON OF MAJOR ELECTRIC UTILITY COMPANIES OPERATING IN SOUTH CAROLINA

Company — Year	Kw.-Hr.	Revenue	Customers	Average Rate Cents Per Kw.-Hr.	Average Annual Use — Kw.-Hr. Per Customer	Average Annual Revenue Per Customer
Carolina Power & Light Co.						
1932	7,503,977	\$ 458,117.80	10,204	6.105	735	\$ 44.90
1935	10,939,600	494,500.60	11,731	4.520	933	43.15
1940	26,657,500	758,002.18	18,196	2.843	1,465	41.66
1945	48,237,700	1,329,294.05	28,763	2.756	1,677	46.22
1950	126,559,100	2,955,714.87	49,809	2.344	2,541	59.34
1955	234,196,700	4,903,122.93	68,850	2.094	3,726	78.01
1960	350,927,000	6,790,603.09	69,435	1.935	5,054	97.80
1965	486,304,700	8,597,603.38	73,664	1.768	6,602	116.71
1970	840,720,400	13,642,890.57	82,366	1.623	10,207	165.64
1975	1,072,963,827	31,416,152.00	92,596	2.928	11,587	229.28
1976	1,118,047,400	37,988,225.00	91,656	3.295	11,522	400.33
1977	1,211,151,816	45,743,779.00	95,844	3.776	12,631	476.95
1978	1,241,806,715	47,954,668.00	97,180	3.862	12,778	493.49
1979	1,226,900,288	48,717,621.00	98,819	3.971	12,416	493.00
1980	1,362,446,803	58,380,674.00	100,335	4.285	13,579	581.86
1981	1,326,054,000	70,442,925.00	102,239	5.312	12,970	689.00
1982	1,294,068,000	74,048,431.00	103,543	5.722	12,498	715.15
1983	1,336,998,000	86,177,580.00	105,579	6.446	12,663	816.24
1984	1,354,291,000	90,535,547.00	107,414	6.685	12,608	842.87
Duke Power Company						
1932	13,514,460	756,738.60	22,376	5.599	604	33.82
1935	19,625,277	844,898.07	27,481	4.509	714	32.20
1940	46,718,561	1,479,019.03	41,771	3.166	978	30.96
1945	81,357,603	2,356,200.83	66,674	2.896	1,220	35.34
1950	267,271,888	5,952,778.21	100,973	2.226	2,648	58.95
1955	539,349,847	11,227,917.90	135,157	2.082	3,991	83.07
1960	813,239,146	16,026,582.48	155,543	1.971	5,228	103.04
1965	1,168,815,918	21,478,962.00	175,944	1.837	6,643	122.08
1970	2,023,344,799	34,946,803.00	210,073	1.727	9,632	166.36
1975	2,824,847,000	84,049,250.00	251,187	2.975	11,246	334.61
1976	2,973,011,973	95,627,346.00	255,538	3.117	11,499	369.88
1977	3,238,529,338	108,620,140.00	263,820	3.354	12,276	411.74
1978	3,362,377,947	120,089,777.00	267,637	3.571	12,563	448.62
1979	3,304,227,000	130,744,000.00	274,033	3.957	12,058	477.11
1980	3,577,197,000	144,639,000.00	280,843	4.043	12,737	515.02
1981	3,611,197,000	156,521,000.00	286,910	4.334	12,586	545.54
1982	3,551,886,000	182,703,000.00	290,645	5.144	12,221	628.61
1983	3,665,149,000	192,393,000.00	295,041	5.249	12,423	652.09
1984	3,735,912,000	210,968,000.00	301,259	5.647	12,401	700.29
S. C. Electric & Gas Co.						
1932	6,458,056	405,256.12	11,321	6.275	570	35.80
1935	9,198,808	447,109.20	12,624	4.862	729	35.42
1940	20,296,986	729,725.95	19,007	3.595	1,068	38.39
1945	34,698,968	1,049,036.75	25,481	3.023	1,362	41.17
1950	238,937,234	6,200,949.96	97,699	2.595	2,446	63.47
1955	519,258,250	12,457,586.00	138,337	2.399	2,754	90.05
1960	850,217,186	18,394,089.73	161,482	2.164	5,265	113.91
1965	1,281,895,086	25,858,455.05	188,343	2.017	6,806	137.29
1970	2,250,612,558	42,866,987.00	228,417	1.904	9,853	187.67
1975	2,893,003,110	106,338,964.00	263,711	3.676	10,970	403.24
1976	3,057,045,173	111,059,716.00	270,235	3.631	11,320	410.20
1977	3,357,119,335	135,853,698.00	276,398	4.047	12,146	491.55
1978	3,481,128,857	150,998,796.00	283,732	4.338	12,269	532.23
1979	3,379,731,419	158,102,640.00	290,684	4.678	11,627	543.90
1980	3,743,532,858	187,748,480.00	297,580	5.015	12,580	630.92
1981	3,705,039,000	221,066,564.00	304,124	5.967	12,182	726.89
1982	3,619,585,000	232,489,119.00	309,048	6.423	11,712	752.28
1983	3,786,899,000	248,917,249.00	315,341	6.573	12,009	789.36
1984	3,918,837,000	296,679,268.00	324,912	7.571	12,061	913.11
South Carolina Power Co*						
1932	9,620,311	621,449.38	14,741	6.660	653	42.16
1935	14,974,782	678,156.78	16,482	4.529	909	41.15
1940	38,604,381	1,163,738.56	25,007	3.015	1,544	46.54
1945	80,091,232	2,117,962.35	36,658	2.640	2,185	57.78

* NOTE: South Carolina Power Co. was absorbed by South Carolina Electric & Gas Company as of March 31, 1950.

**SOUTH CAROLINA PUBLIC SERVICE COMMISSION ELECTRIC DEPT.
RESIDENTIAL ELECTRIC BILL COMPARISON PRIVATELY OWNED POWER COMPANIES AS
OF JUNE 30, 1985**

KWH/MONTH	Carolina Power & Light Co.		Duke Power Company	S. C. Electric & Gas Co.		Heath Springs L&P Co.	Lockhart Power Co.
	Res. 56* 4-1-85	Res. 56**	R/WH 6-1-85	8+ 5-1-85	8++	Res. 3-25-71	R 1-18-84
Minimum	6.50	6.50	5.95	6.50	6.50	1.00	5.00
100	13.31	13.31	11.35	13.60	13.60	12.13	11.34
250	23.53	23.53	19.45	24.24	24.24	17.57	20.86
500	40.56	40.56	32.95	41.98	41.98	28.31	36.71
750	57.59	57.59	46.46	59.71	59.71	40.18	52.57
1000	74.62	72.62	59.96	78.65	76.16	52.04	68.42
2000	142.74	130.74	126.87	155.61	140.67	99.51	136.34
3000	210.86	188.86	193.78	232.57	205.18	146.98	204.26
4000	278.10	246.98	260.69	309.53	269.69	194.45	272.18
5000	347.10	305.10	327.60	386.49	334.20	241.92	340.10

- * Billing Months of July-October.
- ** Billing Months of November-June.
- + Billing Months of June-September.
- ++ Billing Months of October-May.

NOTE: Clinton Mills application to transfer its electric and water systems to the City of Clinton was approved by the Commission on November 21, 1984.

**ELECTRIC GENERATION ACCOUNT OF PRIVATELY-
OWNED ELECTRIC UTILITIES OPERATING IN
SOUTH CAROLINA 1984**

	Kilowatt Hours
Fossil Steam Generation	11,102,117,000
IC Turbine Generation	8,543,000
Nuclear Steam Generation	21,831,075,000
Hydro Generation	2,068,682,600
Total Generation	35,010,417,600
Total Purchased	214,670,450
Net Total Generation and Purchased	35,225,088,050

**SALE TO MUNICIPALITIES FOR RESALE
1984**

Municipality	Company	Kilowatt Hours	Revenue (\$)	Avg. Rate Cents Per KWH
Abbeville	Duke Power Company	29,330,000	1,111,173	3.79
Bennettsville	Carolina Power & Light	76,429,000	3,754,169	4.91
Camden	Carolina Power & Light	132,678,000	6,598,785	4.97
Clemson	Duke Power Company	80,099,000	2,869,800	3.58
Clinton	Duke Power Company	89,486,000	3,469,610	3.88
Due West	Duke Power Company	8,525,000	331,596	3.89
Easley	Duke Power Company	145,583,000	5,719,949	3.93
Gaffney	Duke Power Company	125,355,000	4,561,767	3.64
Greenwood	Duke Power Company	167,004,000	6,286,695	3.76
Greer	Duke Power Company	108,115,000	4,066,074	3.76
Laurens	Duke Power Company	68,120,000	2,526,318	3.71
McCormick	S. C. Electric & Gas Co.	14,960,000	691,750	4.62
Newberry	Duke Power Company	119,831,000	4,594,575	3.83
Orangeburg	S. C. Electric & Gas Co.	530,496,000	22,408,881	4.22
Prosperity	Duke Power Company	6,025,000	221,527	3.68
Rock Hill	Duke Power Company	337,356,000	12,787,523	3.79
Seneca	Duke Power Company	94,122,000	3,583,001	3.81
Union	Lockhart Power Company	95,637,000	3,516,868	3.68
Westminster	Duke Power Company	22,298,000	865,495	3.88
Winnsboro	S. C. Electric & Gas Co.	46,332,000	2,111,404	4.56
Total		2,297,781,000	92,076,960	4.01

**ORGANIZATIONS FURNISHING RETAIL ELECTRIC
SERVICE IN URBAN AND RURAL AREAS OF
SOUTH CAROLINA AS OF JUNE 30, 1985**

Privately Owned Utilities

Privately Owned Electric Companies	Managing Officer	Address
Carolina Power & Light Co.	Sherwood Smith, Pres.	Raleigh, N. C.
Duke Power Co.	Douglas W. Booth, Pres.	Charlotte, N. C.
Heath Springs Light & Power Co.	W. H. Bridges, Pres.	Heath Springs, S. C.
Lockhart Power Co.	L. S. Anderson, Mgr.	Lockhart, S. C.
S. C. Elec. & Gas Co.	John Warren, Pres.	Columbia, S. C.

Rural Electric Cooperatives

Publically Owned (Federally Financed) Electric System	Managing Officer	Address
Aiken Elec. Co-op., Inc.	Hammie L. Chaplin, Mgr.	Aiken, S. C.
Berkeley Elec. Co-op., Inc.	E. E. Strickland, Mgr.	Moncks Corner, S. C.
Black River Elec. Co-op., Inc.	C. H. Leaird, Mgr.	Sumter, S. C.
Blue Ridge Elec. Co-op., Inc.	Charles Dalton, Mgr.	Pickens, S. C.
Broad River Elec. Co-op., Inc.	Robert C. Carroll, Mgr.	Gaffney, S. C.
Central Elec. Power Co-op., Inc.*	P. T. Allen, Mgr.	Columbia, S. C.
Coastal Elec. Co-op., Inc.	Larry Bruce, Mgr.	Walterboro, S. C.
Edisto Elec. Co-op., Inc.	Robert A. Smith, Mgr.	Bamberg, S. C.
Fairfield Elec. Co-op., Inc.	E. L. Ayers, Mgr.	Winnboro, S. C.
Horry Elec. Co-op., Inc.	Charlie Webster, Mgr.	Conway, S. C.
Laurens Elec. Co-op., Inc.	David Wasson, Mgr.	Laurens, S. C.
Little River Elec. Co-op., Inc.	J. L. White, Mgr.	Abbeville, S. C.
Lynches River Elec. Co-op., Inc.	Lynn M. Lanier, Mgr.	Pageland, S. C.
Marlboro Elec. Co-op., Inc.	Willie L. Craig, Mgr.	Bennettsville, S. C.
Mid-Carolina Elec. Co-op., Inc.	Jack F. Wolfe, Jr., Mgr.	Lexington, S. C.
Newberry Elec. Co-op., Inc.	M. Larry Longshore, Mgr.	Newberry, S. C.
Palmetto Elec. Co-op., Inc.	Tom Upshaw, Mgr.	Ridgeland, S. C.
Pee-Dee Elec. Co-op., Inc.	Robert W. Williams, Jr., Mgr.	Darlington, S. C.
Saluda River Elec. Co-op., Inc.*	Joseph W. Mulholland, Mgr.	Laurens, S. C.
Santee Elec. Co-op., Inc.	Ed Whetsell, Mgr.	Kingstree, S. C.
S. C. Public Service Authority	William C. Mescher, Mgr.	Moncks Corner, S. C.
Tri-County Elec. Co-op., Inc.	Robert G. Wannamaker, Mgr.	St. Matthews, S. C.
York County Elec. Co-op., Inc.	R. O. Williams, Mgr.	York, S. C.

* Wholesale Electric Supplier

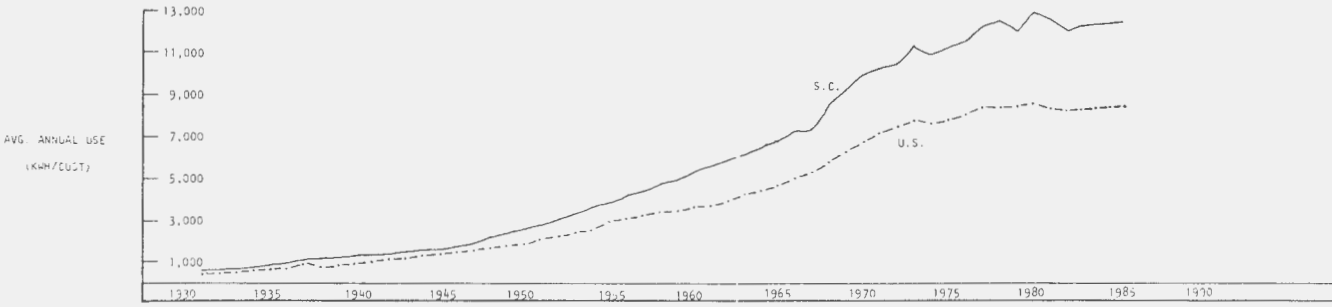
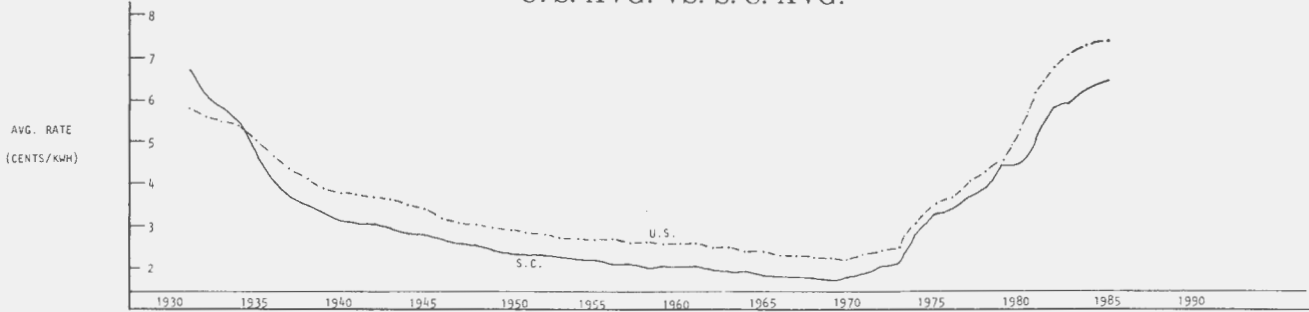
Municipalities

Municipally Owned Utilities	Department	Managing Office
Abbeville	Water and Electric Plant	James C. Godsey, Mgr.
Bamberg	Public Works	James B. Roberts, Dir.
Bennettsville	Electric and Water Plant	Billy Gibson, Supt.
Camden	Dept. of Utilities	Terry Williams, Supt.
Clinton	Light and Water Plant	Charles Harris, Supt.
Due West	Electric Light Dept.	C. H. Hawthorne, Supt.
Easley	City Light and Water Plant	Richard S. Hale, Supt.
Gaffney	Board of Public Works	H. F. Crater, Mgr.
Georgetown	Board of Public Works	W. L. Hewitt, Util. Mgr.
Greenwood	Commission of Public Works	C. E. Grubb, Mgr.
Greer	Commission of Public Works	Kenneth Smith, Mgr.
Laurens	Commission of Public Works	Sam R. Wallace
McCormick	Commission of Public Works	Eaken Cochran, Dir.
Newberry	Commission of Public Works	Steve D. Reeves, Supt.
Orangeburg	Water and Light Plant	Ted Johnson, Mgr.
Prosperity	Commission of Public Works	Arthur Podmore, Supt.
Rock Hill	Commission of Public Works	Max Holland, City Mgr.
Seneca	Light and Water Plant	Jerry Balding, Supt.
Union	Commission of Public Works	T. D. Sherbert, Jr., Dir.
Westminster	Commission of Public Works	Sam Stribling, Supt.
Winnboro	Light and Water Dept.	John C. Shirley, Supt.

<u>YEAR</u>	<u>KWH</u>	<u>CENTS</u>
1931	600	6.700
32	632	6.042
33	634	5.778
34	695	5.415
35	801	4.576
36	899	4.035
37	1,011	3.731
38	1,081	3.536
39	1,145	3.270
1940	1,203	3.123
41	1,260	3.070
42	1,312	3.025
43	1,450	2.957
44	1,509	2.846
45	1,551	2.804
46	1,691	2.753
47	1,844	2.654
48	2,094	2.524
49	2,319	2.458
1950	2,547	2.387
51	2,755	2.321
52	3,002	2.343
53	3,262	2.310
54	3,571	2.254
55	3,844	2.211
56	4,181	2.165
57	4,300	2.141
58	4,696	2.097
59	4,899	2.077
1960	5,212	2.046
61	5,504	2.022
62	5,766	1.999
63	6,063	1.964
64	6,399	1.932
65	6,706	1.904
66	7,158	1.868
67	7,162	1.852
68	8,391	1.800
69	9,020	1.775
1970	9,819	1.788
71	10,070	1.947
72	10,287	2.076
73	11,214	2.154
74	10,847	2.783
75	11,178	3.266
76	11,449	3.419
77	12,249	3.713
78	12,443	3.942
79	11,901	4.263
1980	12,792	4.500
81	12,465	5.184
82	12,038	5.779
83	12,276	6.000
84	12,281	6.640

AVERAGE ANNUAL USAGE
 AND
 AVERAGE COST PER K.W.H.
 RESIDENTIAL SERVICE
 THREE LARGE PRIVATELY OWNED UTILITIES

DOMESTIC ELECTRIC SERVICE U. S. AVG. VS. S. C. AVG.



Power Companies Operating in South Carolina, June 30, 1985

Power Company	Territory Served	Managing Officer	Address
Carolina Power and Light Company	Andrews, Ashland, Auburn, Aynor, Bethea, Bethune, Bishopville, Blaney, Blenheim, Britton, Brogdon, Cades, Cartersville, Cheraw, Chesterfield, Clio, Coward, Darlington, Dillon, Dovesville, Drake, Ebenezer, Effingham, Elliott, Florence, Gallivants Ferry, Greeleyville, Green Sea, Hagood, Hamer, Hartsville, Heineman, Hemingway, Horatio, Jefferson, Johnsonville, Kingtree, Lake City, Lakeview, Lamar, Lane, Latta, Little Rock, Lugoff, Lynchburg, Lydia, Manning, Manville, Marion, Mars Bluff, Mayesville, McBee, McColl, Motbridge, Mt. Croghan, Mullins, Nesmith, New Zion, Nichols, North Mullins, Oates, Olanta, Oswego, Pageland, Pamplico, Patrick, Paxville, Pinewood, Rembert, Ruby, Salters Depot, Sardinia, Scranton, Sellers, Shannontown, Shaw AFB, Society Hill, South Lynchburg, South Marion, Stateburg, Stokes Bridge, St. Paul, Summerton, Sumter, Tatum, Timmonsville, Turbeville, Wallace, Wedgefield, West Marion, Williamsburg, Winona, Zion, Willis, S. C.	Sherwood Smith, President	Raleigh, N. C.
Duke Power Company	Anderson, Antreville, Arcadia, Arlington, Arkwright, Barksdale, Blacksburg, Blair Mills, Boiling Springs, Bon		
Duke Power Company	Avon, Brandon, Broadway, Calhoun, Camp Sevier, Campobello, Crampton, Cashville, Catawba, Cedar Springs, Centerville, Central, Cherokee Springs, Chesnee, Chester, Chick Springs, City View, Clevedale, Cleveland		

Power Companies Operating in South Carolina, June 30, 1985—Continued

<p>Heath Springs Light & Power Company</p>	<p>Clifton Mills, Clinton, Clover, Cokesbury, Cold Point, Concord, Conestee, Converse, Cowpens, Crescent, Cross Hill, Deans Station, Delphia, Disputanta, Donalds, Drayton, Duncan, East Gaffney, Edgemoor, Elgin, Enoree, Equinox Mills, Eureka Mills, Evansville, Fairforest, Fairmount, Filbert, Fingerville, Flat Rock, Flat Woods, Fork Shoals, Fort Lawn, Fort Mill, Fountain Inn, Gaffney, Glendale, Glenn Springs, Gluck Mill, Gowansville, Gramling, Grassy Pond, Gray Court, Gray's Gin, Great Falls, Greenville, Greer, Harris, Haynes, Hickory Grove, Hickory Tavern, Hillcrest, Hodges, Holly Springs, Honea Path, Inman, Iva, King's Creek, La France, Lancaster, Lando, Landrum, Langford Station, Laurens, Leslie, Lewis Turnout, Level Land, Liberty, Lone Oak, Lowrys, Lyman, Madden, Marietta, Mascot, Maud, Mauldin, Mayo, McConnellsville, Midway, Monaghan, Moore, Mountville, Mountain Creek, Mt. Gallagher, New Prospect, Newry, Ninety-Six, Norris, Ora, Orrville, Owings, Pacolet, Pauline, Pelham, Pelzer, Pendleton, Pickens, Piedmont, Popular Springs, Princeton, Reidsville, Renfrew, Richburg, Rodman, Roebuck, Salem Church, Sandy Springs, Saxon, Sedalia, Sharon, Sigsbee, Simpsonville, Six Mile, Smyrna, Spartanburg, Springdale, Starr, Switzer, Taylors, Tigerville, Tirzah, Townville, Travelers Rest, Trough Shoals, Tucapan, Una, Valley Falls, Verdery, Walhalla, Ware Shoals, Waterloo, Watts Mill, Wellford, West Greenville, West Pelzer, West Union, White Stone, Whitmire, Whitney, Woodruff, York</p> <p>Heath Springs, Pleasant Hill, S. C.</p>	<p>Douglas W. Booth, President</p> <p>W. H. Bridges, President</p>	<p>Charlotte, N. C.</p> <p>Heath Springs, S. C.</p>
------------------------------------------------------	--------------------------------------------------------------------------------------------------------------------------------------------------------------------------------------------------------------------------------------------------------------------------------------------------------------------------------------------------------------------------------------------------------------------------------------------------------------------------------------------------------------------------------------------------------------------------------------------------------------------------------------------------------------------------------------------------------------------------------------------------------------------------------------------------------------------------------------------------------------------------------------------------------------------------------------------------------------------------------------------------------------------------------------------------------------------------------------------------------------------------------------------------------------------------------------------------------------------------------------------------------------------------------------------------------------------------------------------------------------------------------------------------------------------------------------------------------------------------------------------------------------------------------------------------------------------------------------------------------------	--------------------------------------------------------------------------------	-----------------------------------------------------

Power Companies Operating in South Carolina, June 30, 1985 — Continued

Power Company	Territory Served	Managing Officer	Address
Lockhart Power Company	Adamsburg, Cross Anchor, Cross Keys, Jonesville, Lockhart, Monarch, Pacolet Mills, Sedalia, S. C.	L. S. Anderson, Mgr.	Lockhart, S. C.
South Carolina Electric & Gas Co.	Arden, Ballentine, Batesburg, Blythewood, Bowman, Cameron, Carlisle, Cayce, Chapin, Chappells, College Place, Columbia, Cordova, Creston, Edgewold, Edgewood, Elloree, Forest Acres, Fort Motte, Gadsden, Gaston, Dentsville, Eastover, Eau Claire, Gilbert, Hopkins, Hyatts, Irmo, Jenkinsville, Johnston, Leesville, Lexington, Little Mountain, Livingston, Lykesland, Monetta, Neeses, North, Norway, Parler, Parr, Peak, Pelion, Perry, Pomaria, Pontiac, Red Bank, Ridge Springs, Ridgeway, Ridgewood, Rion, Rockton, Rowesville, Royster, Sallee, Saluda, Santuc, Seivern, Shelton, St. Matthews, Summit, Swansea, Trenton, Wagner, Ward, West Columbia, White Rock, Woolford, S. C.	John Warren, President	Columbia, S. C.
South Carolina Electric and Gas Company Successor to South Carolina Power Company ...	Adams Run, Aiken, Allendale, Ashley Junction, Ashley Phosphate, Awendaw, Bamberg, Barnwell, Bath, Beech Island, Beaufort, Belvedere, Berry Hill, Blackville, Bluffton, Bordeaux, Boyer, Branchville, Brunson, Burnettetown, Burton, Calhoun Falls, Canadys, Charleston, Cherokee, Chicora, Clark's Hill, Clearwater, Connors, Cooper Yard, Coosawatchie, Cope, Cottageville, Crockettville, Dale, Denmark, Dorchester, Drayton Hall, Dunbarton, Dupont, Early Branch, Edgefield, Edisto Island,		

	<p>Ehrhardt, Elko, Ellenton, Estill, Eutawville, Fairfax, Furman, Garnett, Gloverville, Goodrich, Govan, Grahamville, Graniteville, Green Pond, Hampton, Hanahan, Hardeeville, Harleyville, Hendersonville, Holly Hill, Horse Pond, Isle Of Palms, James' Island, Jedburg, John's Island, Johnstown, Kline, Langley, Lincolnville, Lodge, Luray, Madison, Magnolia, Maryville, McClellanville, Meggetts, Myers, Midland Park, Miley, Modoc, Montmorenci, Mt. Carmel, Mt. Pleasant, North Augusta, North Charleston, Olar, Parksville, Plum Branch, Pocotaligo, Port Royal, Pritchardville, Ravenel, Reevesville, Rosinville, Ridgeland, Ridgeville, Round, Ruffin, Scotia, Seiglinville, Sheldon, Six Mile, Smoaks, Snellings, Springfield, St. Andrew's Parish, St. George, Sullivan's Island, Summerville, Switzerland, Sycamore, Ten Mile, Tillma, Troy, Ulmers, Vance, Varnville, Vacluse, Walterboro, Warrentonville, White Pond, Williams, Willington, Williston, Windsor, Yemassee, Yongs Island, S. C.</p>	<p>John Warren, President</p>	<p>Columbia, S. C.</p>
<p>South Carolina Public Service Authority (Santee-Cooper)</p>	<p>Atlantic Beach, Burgess, Conway, Cherry Grove Beach, Crescent Beach, Floral Beach, Ingram Beach, Loris, Little River, Moncks Corner, Myrtle Beach, Murrell's Inlet, Ocean Drive Beach, Socastee, Wampee, St. Stephen, S. C. .</p>	<p>William C. Mescher, President</p>	<p>Moncks Corner, S. C.</p>

III. GAS DEPARTMENT

There are six private corporation natural gas utilities serving customers in South Carolina. The rates and services of these utilities are subject to jurisdiction of the Public Service Commission. The natural gas utilities and the communities they serve are listed in the tables included in this report.

Natural gas brought into South Carolina is produced principally in the gas fields of Louisiana and Texas, including the offshore areas in the Gulf of Mexico. During the Fall of 1978, our State started receiving gas from Algeria. Liquefied natural gas was transported from Algeria to a regasification plant and marine terminal located on Elba Island, which is near Savannah, Georgia. However, this plant, operated by Southern Energy Company, presently is not receiving the shipments because the Algerian Government has terminated the contract for the supplies.

Gas is transported to South Carolina by two interstate pipeline companies: Transcontinental Gas Pipeline Company and Southern Natural Gas Company. Transcontinental's pipeline crosses the State in the northwest corner, passing just south of Anderson and Spartanburg, South Carolina, while Southern's pipeline enters and terminates in our State at a point near Aiken. All natural gas consumed in South Carolina is furnished by these two interstate pipelines which furnish gas to natural gas authorities and municipally owned gas utilities, as well as privately owned utilities.

The Federal Energy Regulatory Commission has jurisdiction over rates and services of interstate pipeline companies and the price of natural gas sold by producers to interstate pipelines. These price fluctuations have a direct bearing on the cost of natural gas to the ultimate consumer in South Carolina.

The Commission received a number of complaints regarding services and charges from customers of the gas utilities. Each complaint was investigated and handled informally without necessity of a special hearing.

Many communities in South Carolina are receiving natural gas service through facilities owned by municipalities or gas authorities over which the Commission has no rate or service jurisdiction. However, the South Carolina Gas Safety Act of 1970 vested the Commission with pipeline safety jurisdiction over all gas system operators not subject to Federal Energy Regulatory Commission jurisdiction. Therefore, pipeline safety jurisdiction includes public utilities, municipalities, natural gas authorities, certain facilities operated by interstate companies, certain public housing

authorities and others who purchase natural gas through a master meter for subsequent distribution to individual consumers. As of June 30, 1985, there were thirty-seven (37) such operators.

During calendar year 1984, representatives of the Commission made 418 inspections of natural gas systems to ensure compliance with the South Carolina Gas Safety Act and the Minimum Federal Safety Standards for Natural Gas Pipelines. One hundred seventy-six (176) violations were found during these visits and, as of December 31, 1984, the Commission Staff verified compliance covering one hundred forty (140) of these violations. The remaining violations necessitate continued monitoring to substantiate that they are corrected and brought into compliance with the Pipeline Safety Standards.

Agencies of the Federal Government and the State Commission have taken actions designed to increase exploration for new gas reserves within the continental United States and offshore areas. In our State, three companies have been granted Commission approval to engage in exploration activities designed to increase the supply of gas to the companies systems.

All six private gas utilities are operating under the provisions of curtailment plans designed to allocate gas on the basis of priority of service established by such factors as efficiency of use, safety considerations, consumer reliance, and alternate fuel availability.

Two factors showing the pace of activity by natural gas utilities are the average number of customers and the gross plant investment. The growth in total customers served by each privately owned gas utility is shown by one of the accompanying tables. The total of natural gas customers grew from 233,220 in 1980 to 249,341 in 1984 for an increase of 6.91% over the five years.

One (1) hearing for an increase in rates was held during the fiscal year covered in this report. Rates were also adjusted in accordance with approved purchased gas adjustment clauses which are designed to track changes in rates of interstate pipeline companies. Some of these rate changes were retroactive decreases which resulted in refunds being passed to the customer through billing credits.

Many industrial natural gas consumers in our State have means to use alternate fuels to meet their energy needs. Most industrial consumers are very sensitive to energy prices and will normally utilize the lowest cost fuel available. The Commission has approved procedures for all its natural gas companies to alleviate losses of industrial sales because of the pricing competition of alternate fuels.

GAS OPERATIONS IN SOUTH CAROLINA, JUNE 30, 1985

Name of Utility	Localities Served	Managing Officer	Address
PRIVATELY OWNED PUBLIC UTILITIES			
Jurisdiction — Rates & Service — Pipeline Safety			
Peoples Natural Gas Co. of S. C.	Darlington, Florence, Hartsville, Sumter	Ronald A. Steinacker, President	Florence, SC
Piedmont Natural Gas Co., Inc. Transmission	Gas transmission lines from connection with Trans- continental Gas Pipeline Company to City Gates of Anderson, Greenville, and Spartanburg	John H. Maxheim, President	Charlotte, NC
Distribution	Anderson, Belton, Greenville, Honea Path, Inman, Iva, Mauldin, Simpsonville, Spartanburg, Starr, Trav- elers Rest, Woodruff		
South Carolina Electric & Gas Distribution	Abbeville, Aiken, Allendale, Andrews, Barnwell, Batesburg, Bath, Beach Island, Beaufort, Bethune, Bishopville, Blackville, Bowman, Brunson, Burnet- teton, Burton, Calhoun Falls, Camden, Cayce, Clearwater, Charleston, Cheraw, Columbia, Cong- aree, Conway, Denmark, Dentsville, Dillon, Due West, Edgefield, Elgin, Elko, Estill, Fairfax, Forest Acres, Gaston, Georgetown, Gloverville, Goose Creek, Graniteville, Hampton, Harleyville, Holly Hill, Irmo, Jackson, James Island, Jedburg, Jeffer- son, Johnsonville, Johnston, Kingstree, Ladson, Lake City, Langley, Leesville, Lexington, Lin- colnville, Lowndesville, Lugoff, Marion, Mayfield, McBee, Mullins, Myrtle Beach, New Ellenton, North Augusta, North Charleston, Pageland, Pamplico, Parris Island, Perry, Pine Ridge, Pontiac, Port Royal, Ridge Spring, Ridgeville, Society Hill, South Congaree, Salley, Saluda, St. George, Springdale, Steifeltown, Summerville, Swansea, Varnville, Wagener, Walterboro, Warrenville, West Ashley, West Columbia, Williston, Yemassee, Zion	John A. Warren, President and Chief Operating Officer	Columbia, SC

GAS OPERATIONS IN SOUTH CAROLINA, JUNE 30, 1985 — Continued

Name of Utility	Localities Served	Managing Officer	Address
South Carolina Pipeline Corp. Transmission	Gas transmission lines from near Aiken to city gates of Charleston, Columbia and from near Montmorenci to Allendale, Barnwell, Hampton and Beaufort Counties. Gas transmission lines from near Blacksburg to the Pee Dee Section of South Carolina. Gas transmission lines serve Abbeville County and from Transcontinental's Pipeline to Carlisle and tie lines from Aiken to Chappells, Carlisle to Chappells and Carlisle to Moore and Woodruff ...	Max Earwood, President	Columbia, SC
45 United Cities Gas Company Distribution	Gaffney	Gene C. Koonce, President	Nashville, TN
GAS AUTHORITIES Jurisdiction — Pipeline Safety			
Chester County Natural Gas Authority	Chester, Fort Lawn, Great Falls, Lando	R. E. Neal, Manager	Chester, SC
Clinton-Newberry Natural Gas Authority	Clinton, Joanna, Jalapa, Newberry, Kinards, Prosperity, Whitmire	Bob Harris, Manager	Clinton, SC
Fort Hill Natural Gas Authority	Cateechee, Central, Clemson, Easley, Liberty, Norris, Pelzer, Pendleton, Pickens, Seneca, Walhalla, Westminster, West Pelzer, West Union, Williams- ton	Howard Mixon, Manager	Easley, SC
Lancaster County Natural Gas Authority	Lancaster, Heath Springs, Kershaw	Troy Elmore, Manager	Lancaster, SC

GAS OPERATIONS IN SOUTH CAROLINA, JUNE 30, 1985 — Continued

Name of Utility	Localities Served	Managing Officer	Address
York County Natural Gas Authority	Clover, Fort Mill, Rock Hill, York	William Stephenson, Manager	Rock Hill, SC
MUNICIPALITIES			
Jurisdiction — Pipeline Safety			
City of Bennettsville	Bennettsville	William Shuford, Supervisor of Gas Department ...	Bennettsville, SC
City of Blacksburg	Blacksburg	Mr. Reed Love, Administrator	Blacksburg, SC
City of Orangeburg	Cordova, Orangeburg	Mr. Tommy Miller, Superintendent	Orangeburg, SC
City of Winnsboro	Winnsboro	L. C. Greene, Manager	Winnsboro, SC
City of Union	Buffalo, Jonesville, Pacolet, Union	Tom Sherbert, Director of Utilities	Union, SC
City of Bamberg	Bamberg, Cope Community	Bruce Ellis, Superintendent of Public Works	Bamberg, SC
City of Greenwood	Greenwood, Donalds, Ninety Six, Ware Shoals	Gerry O. Crawford, Manager	Greenwood, SC
City of Greer	Greer, Lyman, Duncan	Kenneth Smith, Manager	Greer, SC
City of Fountain Inn	Fountain Inn	Paul Gault, Mayor	Fountain Inn, SC
City of Laurens	Laurens, Gray Court	Coleman Smoak, Manager	Laurens, SC
HOUSING AUTHORITIES			
Jurisdiction — Pipeline Safety			
Housing Authority of the City of Abbeville	Abbeville, Donalds, Due West, Lowndesville	J. Stuart Land, Executive Director	Abbeville, SC
Housing Authority of Aiken	Aiken	Ervin E. Koon, Executive Director	Aiken, SC
Housing Authority of Anderson	Anderson	Ms. Jean Mullikin, Executive Director	Anderson, SC

GAS OPERATIONS IN SOUTH CAROLINA, JUNE 30, 1985 — Continued

Name of Utility	Localities Served	Managing Officer	Address
Housing Authority of the City of Columbia	Columbia	William R. Ballou, Administrator	Columbia, SC
Housing Authority of Gaffney	Gaffney	Joe Turner, Executive Director	Gaffney, SC
Housing Authority of Greenville	Greenville	John Sutton, Executive Director	Greenville, SC
Housing Authority of Kingstree	Kingstree	Wilson R. Buie, Jr., Executive Director	Kingstree, SC
Housing Authority of Laurens	Laurens	Alan Thompson, Executive Director	Laurens, SC
S. C. Regional Housing Authority No.1	Belton, Blacksburg, Calhoun Falls, Central, Clover, Cowpens, Edgefield, Fort Mill, Fountain Inn, Heath Springs, Honea Path, Iva, Johnston, Jonesville, Laurens, Liberty, Ninety Six, Pacolet, Pendleton, Saluda, Seneca, Walhalla, Westminster, Williams-ton, York	William Porter, Executive Director	Laurens, SC
S. C. Regional Housing Authority No. 3	Blackville, Denmark, Fairfax, Salley, Wagener, Williston	John Smith, Exec. Dir.	Barnwell, SC
Housing Authority of Spartanburg	Spartanburg	Frank Gooch, Executive Director	Spartanburg, SC
Housing Authority of Rock Hill	Rock Hill	Jim Poore, Executive Director	Rock Hill, SC
Housing Authority of Woodruff	Woodruff	L. G. Casey, Executive Director	Woodruff, SC
MASTER METER SYSTEMS			
Jurisdiction — Pipeline Safety			
Blease Littlefield Trailer Park	Rock Hill	E. B. Shuler, Owner	Rock Hill, SC
Crescent Manor Apartments	Columbia	Alvin H. Ginn, Jr., Manager	Columbia, SC
Smith's Trailer Park	Rock Hill	Zollie Smith, Owner	Rock Hill, SC

CUSTOMERS SERVED BY NATURAL GAS UTILITIES

Company	Year	Residential	Commercial and Small Industrial	Large Industrial	Sales For Resales	Total Customers
Carolina Natural Gas Corporation	1984	12,933	2,870	50	-0-	15,853
	1983	12,606	2,806	50	-0-	15,462
	1982	12,825	2,652	50	-0-	15,527
	1981	12,161	2,587	60	-0-	14,808
	1980	11,422	2,420	50	-0-	13,892
Carolina Pipeline Company, Inc.	1984	-0-	-0-	90	10	100
	1983	-0-	-0-	93	9	102
	1982	-0-	-0-	89	9	98
	1981	-0-	-0-	101	10	111
	1980	-0-	-0-	100	12	112
Peoples Natural Gas Company of South Carolina	1984	5,716	1,114	60	-0-	6,890
	1983	5,621	1,088	58	-0-	6,767
	1982	5,013	1,061	60	-0-	6,134
	1981	4,483	1,058	58	-0-	5,599
	1980	4,149	1,089	57	-0-	5,295
Piedmont Natural Gas Company, Inc.	1984	45,024	6,017	278	-0-	51,319
	1983	44,236	5,848	274	-0-	50,358
	1982	43,378	5,712	253	-0-	49,343
	1981	42,034	5,631	244	-0-	47,909
	1980	40,316	5,447	240	-0-	46,003
South Carolina Electric and Gas Company	1984	157,754	12,992	392	3	171,141
	1983	156,969	12,671	393	3	170,036
	1982	156,082	12,518	371	3	168,974
	1981	154,293	12,314	341	2	166,950
	1980	151,597	12,048	347	2	163,994
United Cities Gas Company	1984	3,549	467	22	-0-	4,038
	1983	3,520	424	22	-0-	3,966
	1982	3,530	417	21	-0-	3,968
	1981	3,448	418	21	-0-	3,887
	1980	3,508	396	20	-0-	3,924

NATURAL GAS SERVICE TO RESIDENTIAL CUSTOMERS

Company	Year	Residential Customers	Residential Gas Sales, MCF	Average Use Per Customer, MCF
Carolina Natural Gas Corporation*	1984	12,933	854,922	66.1
	1983	12,606	806,131	63.9
	1982	12,825	1,037,407	80.9
	1981	12,161	862,515	70.9
	1980	11,422	899,300	78.7
Peoples Natural Gas Company of South Carolina	1984	5,716	368,643	64.4
	1983	5,621	347,135	65.2
	1982	5,013	367,836	73.4
	1981	4,483	378,952	84.5
	1980	4,149	310,601	74.9
Piedmont Natural Gas Company, Inc.	1984	45,024	3,789,091	84.1
	1983	44,236	3,750,296	84.8
	1982	43,378	3,771,941	87.0
	1981	42,034	3,890,153	92.5
	1980	40,316	3,910,477	97.0
South Carolina Electric and Gas Company	1984	157,754	9,492,046	60.2
	1983	156,969	9,338,289	59.4
	1982	156,082	8,993,694	57.6
	1981	154,293	10,028,623	65.0
	1980	151,597	9,874,355	65.1
United Cities Gas Company	1984	3,549	266,435	75.0
	1983	3,520	259,772	73.8
	1982	3,530	254,163	72.0
	1981	3,448	268,949	78.0
	1980	3,508	281,259	80.2

*Sales are in DT.

NATURAL GAS UTILITIES ANNUAL SALES

Total Sales In MCF

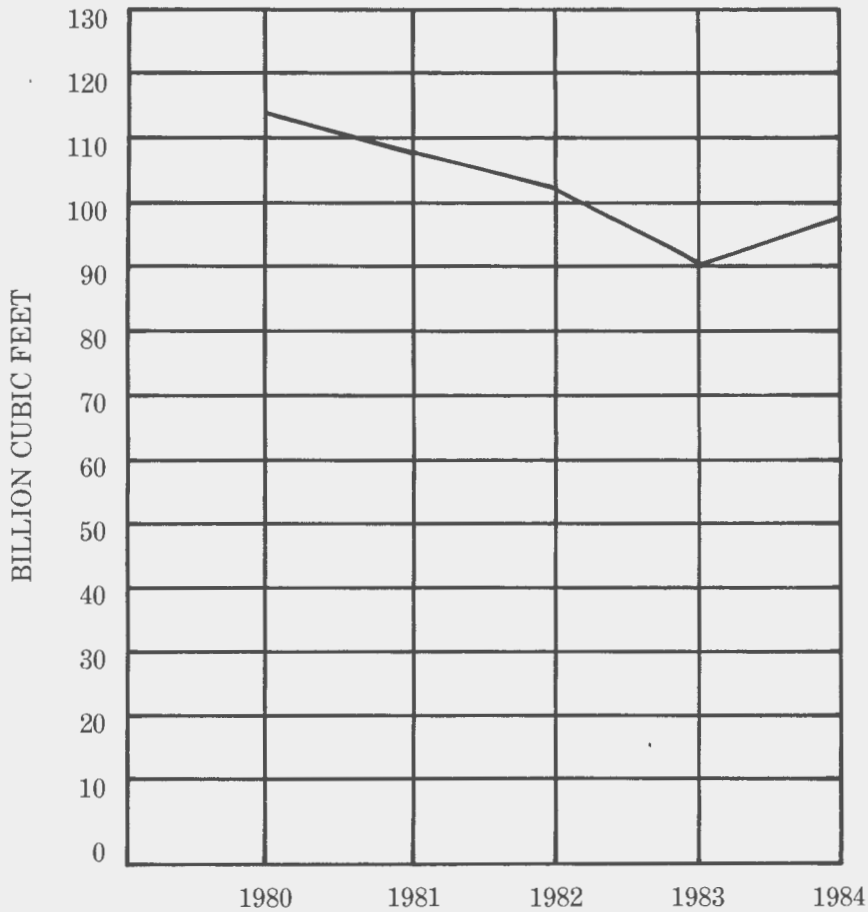
Company	1984	1983	1982	1981	1980
Carolina Natural Gas Corporation*	3,307,098	3,131,910	3,452,302	3,126,334	2,989,864
Carolina Pipeline Company, Inc.*	28,401,057	24,517,414	37,302,726	35,139,000	34,452,456
Peoples Natural Gas Co. of S.C.	2,987,178	3,008,328	3,230,409	3,503,229	2,804,369
Piedmont Natural Gas Company, Inc.	17,202,822	15,511,551	16,919,972	17,856,077	17,619,668
South Carolina Electric and Gas Company	44,340,299	41,768,534	39,812,253	48,179,605	48,734,281
United Cities Gas Company	1,648,824	1,521,200	1,383,222	1,538,315	1,453,374

*Sales are in DT.

MILES OF NATURAL GAS TRANSMISSION PIPELINES

Nominal Pipe Diameter

Company	Year	4in. or over					
		Unknown	less	thru 10in.	thru 20in.	thru 28in.	28in.
Carolina Pipeline Company, Inc.	1984	-0-	314.0	591.0	137.0	-0-	-0-
	1983	-0-	314.0	583.0	137.0	-0-	-0-
	1982	-0-	314.0	583.0	137.0	-0-	-0-
	1981	-0-	222.7	564.3	136.4	-0-	-0-
	1980	-0-	222.7	564.3	136.4	-0-	-0-
Piedmont Natural Gas Company, Inc.	1984	-0-	12.0	37.0	6.0	-0-	-0-
	1983	-0-	12.0	37.0	6.0	-0-	-0-
	1982	-0-	12.0	37.0	6.0	-0-	-0-
	1981	-0-	12.0	37.0	6.0	-0-	-0-
	1980	-0-	12.0	37.0	6.0	-0-	-0-
S. C. Electric and Gas Co.	1984	-0-	80.0	264.0	390.0	-0-	-0-
	1983	-0-	76.0	223.0	320.0	-0-	-0-
	1982	-0-	76.3	221.7	319.9	-0-	-0-
	1981	-0-	76.3	214.0	319.9	-0-	-0-
	1980	-0-	76.3	214.0	319.9	-0-	-0-



**JURISDICTIONAL NATURAL GAS SALES
1980 THROUGH 1984**

IV. TELECOMMUNICATIONS DEPARTMENT

The Telecommunications Department of the Utilities Division is responsible for the work necessary in the regulation of rates, compliance with tariffs, and quality of service pertaining to thirty (30) telephone utilities, fifteen (15) radio common carrier companies, as well as eleven (11) companies that are certificated to provide long distance services.

The Departmental Staff use such methods as performance evaluations, extensive files, and constant contact with the general public to stay abreast of the ever changing environment of the telecommunications industry.

To be able to better serve the needs of the customer, who expects better service without delays, failures, or inaccurate billing, the Staff is constantly monitoring the operations of the Companies that are regulated. These services and procedural evaluations are in the form of central office inspections, cable tests, safety inspections, complaint visits, and business office compliance audits. Sixty-one (61) central office and safety inspections were performed during the year to determine the condition of equipment and the grade of service being rendered. The Staff performed eight (8) compliance audits to determine the level of compliance with the various tariffs and regulations set forth by the Commission. Also, the Staff made twenty-eight (28) visits to customer locations to try to settle filed complaints. These ninety-seven (97) inspections are a vital part of the Department's overall function.

The Staff maintains an updated file on all tariffs, territorial maps, and other pertinent data. The exhibits and materials submitted with rate applications are thoroughly reviewed before being introduced at hearings. The Department was involved in forty-four (44) formal hearings involving telecommunication companies. In addition, seventy-six (76) tariff filings covering new service or change in language were reviewed by the Staff and approved by the Commission.

During the fiscal year, the Department processed in excess of 1,100 complaints. The Staff investigates and makes every effort to resolve all complaints involving rates and service, territorial disputes, and requests for boundary changes. This contact with the public is very vital to maintaining Departmental credibility, as well as a satisfactory grade of service.

During the past year, many changes continued to occur in the telecommunications industry. Further deregulation at the Federal Level has resulted in a series of judgments and rulings which will

have a major impact on the future of the world of modern telecommunications. The telecommunication companies have continued to make large investments to improve their central offices, outside plant, and toll equipment in an endeavor to cope with the ever expanding and changing telecommunications industry. This altered period has been laced with new concepts, new regulations, and a demand for innovative ideas from the Telecommunications Department Staff to stay abreast of these futuristic changes.

REGULATED TELECOMMUNICATIONS UTILITIES OPERATING IN SOUTH CAROLINA, JUNE 30, 1985

Name of Company	Exchange/Operating Areas	Managing Officer/Addressee	Address
AllTel Carolina, Inc.	Landrum, Campobello, S. C.	Mr. Archie A. Thomas, Pres.	Matthews, N. C.
AllTel South Carolina, Inc.	Lexington, Kershaw, Inman, S. C.	Mr. Rex Newman, Pres.	Lexington, S. C.
Bluffton Telephone & Appliance Co., Inc.	Bluffton, S. C.	Mr. John D. Cantrell, V. Pres.	Bluffton, S. C.
Chesnee Telephone Company	Chesnee, S. C.	Mrs. H. W. Askins, Pres.	Chesnee, S. C.
Chester Telephone Company	Chester, Great Falls, Lewisville, S. C.	Mr. J. W. McElwee, Pres.	Chester, S. C.
Continental Telephone Co. of S. C.	Bowman, Elloree, Jackson, Santee, Simpsonville, S. C.	Mr. E. L. Osborne, State Mgr.	Simpsonville, S. C.
Farmers Telephone Coop, Inc.	Bishopville Rural, Greeleyville, Lane, Lynchburg, Mayesville, N. Kingstree, N. Manning, N. Summerton, N. Sumter, Pinewood, Scranton, Statesburg, Turbeville, W. Andrews, S. C.	Mr. Aubrey Judy, Mgr.	Kingstree, S. C.
Fort Mill Telephone Co.	Fort Mill, S. C.	Mr. F. S. Barnes, Pres.	Rock Hill, S. C.
General Telephone Co. of the SE	Abbeville, Andrews, Bishopville, Calhoun Falls, Conway, Ehrhardt, Fairfax, Georgetown, Hemingway, Hollywood, Johnsonville, Kingstree, Lake City, Lamar, Laurens, McCormick, Manning, Myrtle Beach, Ocean Drive, Olanta, Olar, Pamplico, Pawleys Island, Shawview Heights, N. Myrtle Beach, Summerton, Sumter, Surfside, Walterboro, Woodruff, Winnsboro, Yemassee, S. C.	Mr. J. W. Turner, V. Pres. & Gen. Mgr.	Myrtle Beach, S. C.
Hargray Telephone Company, Inc.	Hardeeville, Hilton Head Island, S. C.	Mr. Tony Capici, Mgr.	Hilton Head, S. C.
Heath Springs Telephone Co.	Heath Springs, S. C.	Mr. W. H. Bridges, Pres.	Heath Springs, S. C.
Home Telephone Company, Inc.	Moncks Corner, Harleyville, Jamestown, Lebanon, Cross, S. C.	Mr. Robert L. Helmly, Pres.	Moncks Corner, S. C.
Horry Telephone Coop, Inc.	Aynor, Horry, Floyds, Loris, Murrells Inlet, Red Hill, Lakewood, S. C.	Mr. R. E. Jamison, Mgr.	Conway, S. C.
Lancaster Telephone Co.	Lancaster, S. C.	Mr. Gene T. Whitlock, Opr. Mgr.	Lancaster, S. C.
Lockhart Telephone Exchange	Lockhart, S. C.	Mr. L. S. Anderson, Gen. Mgr.	Lockhart, S. C.
McClellanville Telephone Co., Inc.	McClellanville, S. C.	Mr. F. O. Baxter, Mgr.	McClellanville, S. C.
Norway Telephone Company, Inc.	Norway, S. C.	Mr. J. C. Williams, Mgr.	Norway, S. C.
Palmetto Rural Telephone Coop., Inc.	Colleton, Cottageville, Hendersonville, Lodge, Williams, S. C.	Mr. Dan Dandridge, Mgr.	Walterboro, S. C.
Piedmont Rural Telephone Coop., Inc.	Enoree, Gray Court, Hickory Tavern, Laurens Rural, Waterloo, West End, S. C.	Mr. J. S. Stoddard, Mgr.	Laurens, S. C.
Pond Branch Telephone Company	Gilbert, Pelion, Pond Branch, Swansea, Wagener, S. C.	Mr. N. Everett Kneece, V. Pres. and Mgr.	Gilbert, S. C.

**REGULATED TELECOMMUNICATIONS UTILITIES
OPERATING IN SOUTH CAROLINA, JUNE 30, 1985 — Continued**

Name of Company	Exchange/Operating Areas	Managing Officer/Addressee	Address
Ridge Telephone Company	Ridge Spring, S. C.	Mr. E. P. Boatwright, Mgr.	Ridge Spring, S. C.
Ridgeway Telephone Company, Inc.	Ridgeway, S. C.	Mr. J. M. McElwee, Mgr.	Chester, S. C.
Rock Hill Telephone Company	Rock Hill, S. C.	Mr. F. S. Barnes, Pres.	Rock Hill, S. C.
Sandhill Telephone Coop., Inc.	Chesterfield, Jefferson, Pageland, Patrick, Ruby, McBee, Bethune, S. C.	Mr. John D. McLaurin, Mgr.	Jefferson, S. C.
Southern Bell Tel. & Tel. Co.	Aiken, Allendale, Anderson, Bamberg, Barnwell, Bath, Belton, Bennettsville, Blue Ridge, Blacks- burg, Blackville, Blenheim, Camden, Central, Chapin, Charleston, Cheraw, Clemson University, Clinton, Clio, Clover, Columbia, Congaree, Cow- pens, Darlington, Denmark, Dillon, Easley, East- over, Edgefield, Edisto Beach, Florence, Folly Beach, Fountain Inn, Gaffney, Graniteville, Green- ville, Greer, Hartsville, Hickory Grove, Honea Path, Isle of Palms, Joanna, Johnston, Jonesville, Lake View, Lake Wylie, Latta, Leesville, Liberty, Little Mountain, Lyman, Marion, McColl, Mt. Pleas- ant, Mullins, Newberry, New Ellenton, Nichols, North Augusta, Orangeburg, Pacolet, Pelzer, Pen- dleton, Pickens, Piedmont, Prosperity, Seneca, Sharon, Six Mile, Spartanburg, Springfield-Salley, St. George, Society Hill, Sullivan's Island, Summ- erville, Timmonsville, Travelers Rest, Union, Wal- halla, Westminster, Whitmire, Williamston, York, S. C.	Mr. H. C. Henry, Jr., V.P. and Gen. Mgr.	Columbia, S. C.
St. Matthews Telephone Co.	St. Matthews, Cameron, Creston, S. C.	Mr. R. F. Nickells, Mgr.	St. Matthews, S. C.
St. Stephen Telephone Co.	St. Stephen, Bonneau, S. C.	Mr. F. O. Baxter, Mgr.	St. Stephen, S. C.
United Telephone Company of the Carolinas, Inc.	Beaufort, Branchville, Estill, Eutawville, Hampton, Holly Hill, Laurel Bay, Ridgeland, Greenwood, Hodges, Cross Hill, Saluda, Troy, Ware Shoals, Ninety Six, Chappells, Mountville, S. C.	Mr. L. A. Corning, V. Pres.	Bristol, Tenn.
West Carolina Rural Telephone Corp.	Due West, Iva, Plum Branch, Starr, W. Abbeville, S. C.	Mr. L. B. Thompson, Mgr.	Abbeville, S. C.
Williston Telephone Company	Williston, North, S. C.	Mr. Gene Owens, Mgr.	Williston, S. C.

**RADIO COMMON CARRIERS IN SOUTH CAROLINA
ISSUED CERTIFICATES OF PUBLIC
CONVENIENCE AND NECESSITY**

1. ABLE COMMUNICATIONS
(Mr. David Thomy)
Post Office Box 4567
Florence, S. C. 29503
665-5000
2. ASTA, INC.
(Dr. Marshall R. Roberson)
P. O. Box 743
Anderson, S. C. 29622
226-8515
3. CAMDEN MOBILE
COMMUNICATIONS, INC.
(Ms. Merle Park)
1218 Henderson Street
Columbia, S. C. 29201
799-3060
Post Office Box 96
Camden, S. C. 29020
4. EAGLE COMMUNICATIONS, INC.
(Mr. Jim Prestwood)
118 Newberry Street
Aiken, S. C. 29801
648-3233
5. EVANS COMMUNICATIONS, INC.
(Ms. Merle Park)
1218 Henderson Street
Columbia, S. C. 29201
799-3060
6. GEORGIA PAGING
COMPANY
3131 Bull Street
Savannah, Georgia 31405
912-236-1396
7. MARCOM SYSTEMS, INC.
(Mr. H. A. Morris, III)
415 B. N. Pleasantburg Drive
Greenville, S. C. 29607
242-4567
8. MOBILE PHONE OF
CHARLESTON
d/b/a Telepage Communications
418 E. Bay Street
Charleston, S. C. 29403
723-4339
9. MORRIS COMMUNICATIONS,
INC.
(Mr. H. A. Morris, III)
415 B. N. Pleasantburg Drive
Greenville, S. C. 29607
242-4567
Post Office Box 3527
Myrtle Beach, S. C. 29577
10. NATIONAL PAGE, INC.
(Mr. Gene Phillips)
Post Office Box 16775
Greenville, S. C. 29601
239-8000
11. PARKER ELECTRONICS
(Mr. Harry L. Parker)
619 Front Street
Georgetown, S. C. 29440
546-9351
12. ROCK HILL MOBILE
COMMUNICATIONS
c/o 2 Way Radio of the Carolinas,
Inc.
(Mr. Allen L. Guin)
1932 West Morehead Street
Charlotte, N. C. 28208
704-372-3444
13. STARPAGE COMMUNICATIONS
(Mr. Gene H. Kizer)
Post Office Box 552
Irmo, S. C. 29063
781-3750
14. TELEPAGE OF BEAUFORT
3131 Bull Street
Savannah, Georgia 31405
912-236-1396
15. TELEPAGE OF SOUTH
CAROLINA
d/b/a Telepage Communications
418 E. Bay Street
Charleston, S. C. 29403
723-4339

**COMPANIES CERTIFICATED TO PROVIDE
LONG DISTANCE TELECOMMUNICATIONS
SERVICES IN SOUTH CAROLINA**

1. Mr. B. C. Morrow
Assistant Vice President-
Regulatory Relations
AT&T Communications
Post Office Box 2148
Charlotte, NC 28211
2. Mr. Oscie O. Brown, III
Director, Rates and Tariffs
Telecommunications Systems, Inc.
Post Office Box 7308
Columbia, SC 29202
3. MCI Telecommunications
Corporation
400 Perimeter Center Terrace, NE
Suite 400
Atlanta, GA 30346
4. Mr. James E. MaGee
GTE-SPRINT Communications
Corporation
1828 L. Street, NW
Suite 500
Washington, DC 20036
5. Mr. John O'Boyle
Vice President
United States Transmission
Systems, Corp.
100 Plaza Drive — 4th Floor
Seacaucus, NJ 07096
6. Mr. Cam Lanier
Director
Southern Tel, Inc.
61 Perimeter Park
Atlanta, GA 30341
7. Mr. John G. Spindler, Jr.
National Telephone Systems, Inc.
14 New Orleans Road — Suite 15
Post Office Drawer 7018
Hilton Head Island, SC 29938
8. Ms. Kathryn Jarvis
President and General Manager
Jarvis Long Distance, Inc.
14 Vanderhorst Street
Charleston, SC 29403
9. Mr. Cam Lanier
President
Interstate Communications, Inc.
910 First Avenue
West Point, GA 31833
10. Mr. James S. MacLeod
Managing Officer
Telamarketing Communications
Post Office Box 928
Evanville, IN 47706
11. Mr. Charles S. Houser
Vice President-General Manager
Tel/Man, Inc.
Post Office Box 2729
Greenville, SC 29602

GROWTH OF TELEPHONE UTILITIES IN SOUTH CAROLINA

Year	Gross Operating Revenue (Millions of Dollars)	Gross Plant Investment (Millions of Dollars)
1966	83.1	394.4**
1967	90.5	446.1**
1968	102.6	500.1**
1969	117.7	561.8**
1970	134.8	634.3**
1971	194.6	683.3**
1972	168.4*	807.1***
1973	182.9*	934.4***
1974	213.9*	1086.6***
1975	340.8	1053.2***
1976	399.5	1304.5***
1977	449.7	1451.6***
1978	492.3	1595.0***
1979	577.5	1779.6***
1980	660.2	1972.9
1981	768.8	2076.9
1982	859.1	2232.5
1983	869.9	2329.8
1984	786.1	2269.1

Includes only South Carolina portion of TOLL REVENUE.

** Includes Plant in Service, held for future use.

*** Includes Plant in Service and under construction.

V. WATER AND WASTEWATER DEPARTMENT

The majority of water and sewerage utilities operating in the State of South Carolina are owned and operated by municipalities and public water and sewer districts which are exempt, by state statute, from jurisdiction of the Public Service Commission. The City of Anderson is provided water service by a privately owned utility and therefore is regulated by the Public Service Commission.

Efforts to improve efficiency of each company has brought consolidation of many of the smaller companies. As of June 30, 1985, there are 237 water systems and 204 sewerage systems operating under 153 companies regulated by the South Carolina Public Service Commission.

There were 8 new water or sewerage utilities granted Certificates of Public Convenience and Necessity during the fiscal year and 8 water or sewerage utilities that were granted certificated areas under formally organized corporations.

More stringent demands by state and federal agencies, higher operating and maintenance costs, wages and supplies caused 10 water and sewerage companies, operating in this state, to apply to the Commission for authority to increase their rates and charges for water and sewerage service.

As prescribed by law and after proper advertisement, public hearings were held on each application for adjustments in water and sewerage rates and charges.

The problems of water and sewerage utilities continue to be problems of the Public Service Commission. The Public Service Commission received a substantial number of customer complaints during the fiscal year. These complaints fell into one of two categories, either service or billing; each complaint was investigated and settled informally, or if necessary, resolved through public hearings.

Prior to issuing a Certificate of Public Convenience and Necessity to a water or sewerage utility, the Commission, among other items, required a performance bond in accordance with Section 58-5-270 of the 1976 Code of Laws of South Carolina as amended, complete cost and rate data, approval of adequate design, and supply potential, plat of proposed area to be served and copy of engineering plans and specifications.

WATER UTILITIES OPERATING IN SOUTH CAROLINA AS OF JUNE 30, 1985

Name of Utility	Service Area	Managing Officer/Addressee	Address
A. D. Hare, d/b/a			
A. D. Hare Water Works	Huntington, Pinopolis	A. D. Hare, Owner	Pinopolis, SC
Augusta Fields Utility System	Augusta Fields Subdivision	H. D. Bushardt, Pres.	Greenwood, SC
B & B Water Works, Inc.	Clifton Community, Converse	Betty Blodgett	Clifton, SC
Melvin W. Faile d/b/a Barney Rhett			
Circle Water System	Barney Rhett Circle Subdivision	Donald W. Harper, Esq.	Rock Hill, SC
Big Rock Water Company	Big Rock Subdivision	George F. Townes, Atty.	Greenville, SC
Blackgate-East Water System, Inc.	Blackgate-East Subdivision	Charles E. Augustine	Newberry, SC
Blue Ribbon Water Corp.	Willowbrook, Country Oaks and Ridgewood Subdivisions, Shandon, Foxwood, Pleasant Hill	Bill Hopper	Rock Hill, SC
Bobby Joe Solesbee, d/b/a			
Bobby Joe Solesbee Utility Company	Hill Acres Subdivision	Bobby Joe Solesbee	Spartanburg, SC
Eugene F. Bobo Well Drilling	Rockview Heights, Englewood, Centerville School ..	Eugene F. Bobo, Owner	Anderson, SC
Buckeye Water Company, Inc.	Lost Creek, Shadowood Cove	Oscar F. Peters, Owner	Columbia, SC
Calvin Acres Utility Co., Inc.	Calvin Acres	Homer J. Spires	West Columbia, SC
Carolina Water Service, Inc.	Laurel Meadows, Rollingwood, Springhill, Oakcrest, Greyland Forest, Woodcastle, Glen Village II, Green Oaks, Meadowlake Hills, Hollywood Hills, Pocalla Village, Carolina Estates, Falcon Ranches, Sycamore Acres, Westside Terrace, Oakwood, Blue Ridge Terrace, Indian Pines, Idlewood, Heatherwood, Wrenwood, Spring Lake, Teal on the Ashley, Peachtree Acres, Meadowood, The Landings, Timberlake, Carolina Shores, Dutchwood, Harborside, Smallwood Estates, Plantation Ridge, Stonegate, Lands End, Black Horse Run	Perry Owens	Northbrook, Ill.
Capital Utilities Corp.	Four Seasons Centre (Folly Field Area)	John Bowen, Esq.	Columbia, SC
Cherry Hill Subdivision Water System	Cherry Hill Subdivision	F. L. Burnett, Jr., Pres.	Ninety Six, SC
Coastal Utilities, Inc.	Windmill Harbour	Leon Gilbert	Hilton Head, SC

WATER UTILITIES OPERATING IN SOUTH CAROLINA AS OF JUNE 30, 1985 — Continued

Name of Utility	Service Area	Managing Officer/Addressee	Address
Coates Road Water System, Inc.	J. D. Coates Subdivision	Ralph Brendle	Spartanburg, SC
Commonwealth Utility Co., Inc.	Cabin Creek Subdivision	Preston H. Callison, Esq.	Columbia, SC
Community Water System	Hollywood Manor	E. Harrison, III	Charleston, SC
Cornwell Land Company, Inc.	Shandon Subdivision	Jack Cornwell	York, SC
Courtenay Utilities, Inc.	Newry & Vicinity	Wayne Dorr	Newry, SC
Crest Water Company, Inc.	Wintercrest, Rawlinson Plantation, Carrowoods, Hidden Lake, Olde Farm Place, Hickory Hill	Melvin B. McKeown, Jr.	York, SC
DeBordieu Colony Club, Inc.	DeBordieu Colony Subdivision	Wallace F. Pate	Georgetown, SC
Dinkins Water Development Co.	Dinkins Development Subdivision	J. D. Dinkins	Sumter, SC
Duke Power Company	Anderson, Vicinity of Clemson and Pendleton, SC, Middleton Shores	E. O. Ferrell	Anderson, SC
Dunmovin Utilities, Inc.	Dunmovin Subdivision, Island Estates	Chris Evans	Summerville, SC
E. B. Stone	E. B. Stone Acres	E. B. Stone	York, SC
E & R Partnership	Lake Marion Shores	Rose Marie Oliver	Manning, SC
Eagle Point Water Co., Inc.	Eagle Point Subdivision	Joseph H. Moore	Manning, SC
Edenwood Water Company	Edenwood Subdivision	William C. Hawley	West Cola., SC
Fairlawn Utilities, Inc.	Fairlawn Subdivision	Peggy C. Sox	Lexington, SC
Fork Shoals Water Works	Fork Shoals Village	J. E. Haller	Ware Shoals, SC
General Utilities	St. Davids Pl., Franklin Park, Albene Park	Preston H. Callison, Esq.	Columbia, SC
Gnato's Utility	Gnato's Acres Subdivision	F. H. Waden	High Point, NC
Graniteville Company	Graniteville and Vicinity	Jerry Howell	Graniteville, SC
Hallmark Shores Water Company	Hallmark Shores Subdivision	Lucius Porth	Lexington, SC
Harbor Island Utilities, Inc.	Harbor Island	R. Arnold Ellison, Jr.	Hilton Head, SC
Hartwell Properties, Inc.	Chicksaw Point Development	Roger A. Hard	Charlotte, NC

WATER UTILITIES OPERATING IN SOUTH CAROLINA AS OF JUNE 30, 1985 — Continued

Name of Utility	Service Area	Managing Officer/Addressee	Address
Heater Utilities, Inc.	Springfield Acres, Dutchwood Village, Farrowood, Raintree Acres, Washington Heights, Charleswood, Vanarsdale, Bellemede, Parkwood, Royal Hills, Ballentine Acres, Harmon Estates, South Congaree, Murray Park, Murray Lodge, Dutchman Shores, Indian Cove, Tanya Terrace, Emma Terrace, Lake Village, Melmont Shores, Dutchman Acres, Arrowhead Shores, Charwood, Lexington Estates, Oakland Plantation, Tanglewood, Foxtrail, Windy Hill, Sangaree, Pioneer Shores, Arrowood, Oakridge Hunt Club, Lakewood Estates, Lexington Farms	Ron Matthews	Columbia, SC
Heritage Utilities, Inc.	Heritage Village, USA	C. Dukes Scott, Esq.	Columbia, SC
Hermitage Water Systems of Lexington, Inc.	The Hermitage Subdivision	Robert D. Hendrix	Lexington, S. C.
Hilton Head Plantation Utilities, Inc.	Point South, Hilton Head Plantation	J. Roy Martin, III	Clover, SC
Hilton Head Utilities, Inc.	Blue Heron Point, Bram's Point, Spanish Wells, Mariner's Cove, Burke's Beach, Squiresgate, Oak Marsh	Joe Y. Pitts, Pres.	Hilton Head, SC
Horse Island Service Corporation	Horse Island, Vue Point Subdivision	G. H. O'Kelley	Hilton Head, SC
Hughes Water System, Inc.	Hill & Dale, Sherwood Forest, Clearview Heights, Green Forest, Fieldcrest Acres, Calhoun Acres, Purdy Shores, Bridgewater, Surfside Heights, Lakewood, Clark Estates, Purdy Plantation, Town Creek Acres, Edgebrook, Haynie Builders, Normandy Park, Rice Enterprises, Dobbins Estates, Hidden Lake, Nevitt Forest, Oakwood	B. Hughes, Owner	Anderson, SC
Hunters Glen Water System, Inc.	Hunter's Glen Subdivision	Eugene Fleischer, President	Augusta, GA
Hyde Park Water Company	Hyde Park	John S. Coleman, Manager	Greenwood, SC
Inland Water Company	Rollingwoods Acres	William Adams	Moncks Corner, SC
Island Utilities, Inc.	Area East of 41st Street, Isle of Palms	Lucas Padgett, Esq.	Charleston, SC
Isle of Palms Water Company	Forest Trail S/D, Isle of Palms	Charles S. Way, Pres.	Isle of Palms, SC

WATER UTILITIES OPERATING IN SOUTH CAROLINA AS OF JUNE 30, 1985 — Continued

69

Name of Utility	Service Area	Managing Officer/Addressee	Address
Kiawah Island Utilities, Inc.	Kiawah Island	Tom Duncan	Kiawah Island, SC
Lake Chinquapin Properties, Inc.	Subdivision No. 1	Calhoun Mays, III	Greenwood, SC
Lake Murray Utilities, Inc.	Murray Hill Estates, Harrisburg	Willie L. Sox, Pres.	Lexington, SC
Lake Princeton Water Company	Lake Princeton Subdivision	Charles T. Kinard	Lexington, SC
Lake Wylie Community Utilities	Southwoods Subdivision	John C. Malpeli, III, Owner	Lake Wylie, SC
Land Point Subdivision Water System	Land Point Subdivision	J. O. Brasington, Owner	Columbia, SC
Lockhart Power Company	Lockhart, Monarch Villages	W. F. Tribble, Asst. Treas.	Lockhart, SC
Long Cove Club Utilities, Inc.	Long Cove Club Development	Joseph A. Webster, III	Beaufort, SC
Lost Wilderness, Inc.	Lost Wilderness Subdivision	Gene C. White, Pres.	Lavonia, GA
Marina Colony, Inc.	Marina Colony near Murrells Inlet	William Hagan	Johnsonville, SC
Mark Water Works, Inc.	Gray's Hill Subdivision	Ernest G. Mark, Pres.	Beaufort, SC
Meadowbrook Water Works, Inc.	Meadowbrook Subdivision	R. D. Ferguson	Spartanburg, SC
Mitchell Saxon Water System	Mitchell Saxon Subdivision	Mitchell Saxon	Spartanburg, SC
Mountain Bay Estates Utility, Co., Inc.	Mountain Bay Estates	Gary Merritt	Westminster, SC
R. W. Norman, d/b/a Warren Norman and Company	Riverview Subdivision	R. W. Norman	Rock Hill, SC
Oak Grove Estates Utilities	Oak Grove Estates	S. V. Oxner, Owner	Lexington, SC
Old Barnwell Road Utility Co., Inc.	Land of Lakes, Southgate, Walnut Creek	Albert E. Sturkie	Columbia, SC
Paris Mountain Utilities	Altamont Forest Subdivision	J. W. Hiller, Jr.	Greenville, SC
Park Utilities, Inc.	Victorian Lakes Mobile Home Park, Rolling Meadows Mobile Home Park of West Columbia, Hermitage Farms Mobile Home Park of Camden	Paul R. Bouknight, Owner	Columbia, SC
Pinebrook of Spartanburg	Pinebrook Subdivision	J. P. Hellams, Jr.	Spartanburg, SC
Pinedale Utility Company	Guignard Park, Ashley Creek, Pinedale, Guignard Park East	Dan Trotter, Pres.	Sumter, SC
Point South Utilities	Point South	James Taylor, President	Yemassee, SC
Porter Water Co., Inc.	Carolina Springs Golf and Country Club, Inc.	Guy Porter	Fountain Inn, SC
River Pines Water Systems, Inc.	River Pines	Donald W. Harper, Esq.	York, SC
Rose Hill Utility Company, Inc.	Rose Hill Plantation	R. Arnold Ellison, Jr.	Hilton Head, SC
Santee-Cooper Resort, Inc.	Santee Cooper Resort	Bob Hickman	Santee, SC
Seabrook Island Utilities Corporation	Seabrook Island Development	Richard T. Collier, Pres.	Johns Island, SC

WATER UTILITIES OPERATING IN SOUTH CAROLINA AS OF JUNE 30, 1985 — Continued

Name of Utility	Service Area	Managing Officer/Addressee	Address
South Atlantic Utilities, Inc.	May River Plantation	Mr. Smith	Savannah, GA
Southland Utilities, Inc.	Creekwood, Cedarwood	Linda Hickman	Lexington, SC
J. C. Cloniger, d/b/a Springlake Estates Water System	Springlake	J. C. Cloniger, Owner	York, SC
Stephenson Investment Company, Inc.	Stephenson Lakes	H. P. Stephenson	Columbia, SC
TCU, Inc.	Tega Clay Subdivision	F. William Hargrove	Fort Mill, SC
Taylor Water Works, Inc.	Pine Forest, Pecan Grove	James Taylor, Owner	Ridgeland, SC
Trans Tech, Inc.	Wesleywood	C. R. Parson	Rock Hill, SC
United Utilities Companies, Inc.	Woodmont Estates, Colonial Acres, Cove Inlet, Dean Springs, Farmington Acres, Ponderosa, Seaton Acres Triangle, Wendy Lane, Woodlawn Park ...	David G. Ingalls, Esq.	Spartanburg, SC
Village Utilities, Inc.	Madera Subdivision, Westgate Apartments, Madera Apartments	T. G. Daniel, Jr.	Spartanburg, SC
Warner Water Works, Inc.	Pinehurst McCombs Subdivision	W. Erwin Warner	Abbeville, SC
Water Oak Utility Company	Moss Creek Plantation	William A. Ruth, Esq.	Beaufort, SC
Water Systems, Inc.	Oak Shores, Timbergate I and II, Port Bass I and II	Jerry Arrington	Anderson, SC
Waterford, Inc.	Waterford Heights	Joseph Haval, Pres.	Pawley's Island SC
West Side Water Company	Hilldale	Robert F. Burgess, Pres.	Sumter, SC
Ella Claire L. Mays, Trustee I, d/b/a Westgate Water System	Westgate Subdivision	Calhoun Mays, III	Greenwood, SC
Westover Water Company	Westover Subdivision	P. H. Partridge, Jr., Owner	Charleston, SC
Wexford Plantation Utility Co.	Wexford Plantation, Central Park, Commercial Subdivision	R. Arnold Ellison, Esq.	Hilton Head, SC
Win-Mar Utilities, Inc.	The Gathering Subdivision	Arthur T. Meeder, Esq.	Hilton Head, SC
Woodlawn Water Company	Woodlawn Subdivision	W. Clayton Thompson	Greenwood, SC

SEWERAGE UTILITIES OPERATING IN SOUTH CAROLINA AS OF JUNE 30, 1985

Name of Utility	Service Area	Managing Officer/Addressee	Address
Alpine Utilities	Woodland Hills West No. 2, Woodland Hills No. 3, Mandel Park, Bonnie Forest, Farndale, Groves S/D, Outlet Pointe, Sherwood Park, S. C. Education Assoc. Sheraton Hotel	J. Donald Dial, Pres.	Columbia, SC
Anco Utilities, Inc.	Mellwood Subdivision	Bill Watkins	Lexington, SC
Archdale Utilities Corp.	Archdale Subdivision	F. Crosby Lewis, Esq.	Columbia, SC
Arlington Development Co.	Arlington Subdivision	Ralph L. Smith, Jr., Pres.	Lugoff, SC
Artistic Builders, Inc.	Whispering Pines, Bent Tree S/D	Larry Gibson, Pres.	Easley, SC
Augusta Fields Utility System	Augusta Fields Subdivision	G. P. Callison	Greenwood, SC
Blue Ribbon Water Corp.	Willowbrook, Country Oaks, Ridgewood, Shandon, Foxwood, Pleasant Hills	Bill Hopper	Rock Hill, SC
Clyde G. Branham, Inc./Lakewood Development	Lakewood Subdivision	Clyde G. Branham, Pres.	Lugoff, SC
Briarcliff Estates	Briarcliff Estates	Brenda Waltz	Columbia, SC
Brookside Sewer District	Brookside Village Subdivision	Frank Nutt	Spartanburg, SC
Buckeye Sewer Company	Lost Creek Subdivision	Oscar Peters, Owner	Columbia, SC
Bush River Utilities, Inc.	Vicinity of Dutch Square, Bush River Road	Charles Parnell	Columbia, SC
Business Brokers of the South	Mayfield Park	David Wallace	Lugoff, SC
Capital Utility Corp.	Four Seasons Centre (Folly Field Area)	John Bowen, Esq.	Columbia, SC
Carolina Water Service, Inc.	Lands End, Stonegate, River Hills Plantation, Laurel Meadows, Rollingwood, Springhill, Oakcrest, Greyland Forest, Woodcastle, Glen Village II, Okatee, Charles Towne, Hollywood Hills, Green Oaks, Pocalla Village, Palmetto Apartments, Lincolnshire, Whites Creek, Woodsen, Friarsgate, Greensprings, Meadowlake (Parcel F-1, Section A), Mandel Hall, Pocalla Heights, Belk, Oakland Plantation, Springlake, Teal on the Ashley, Roosevelt Gardens, Westchester Estates, Kings Grant, Pepperhill, Meadowood, The Landings, Timbergate, Dutchwood, Harborside, Plantation Ridge, Smallwood Estates, Hidden Valley Mobile Home Park, Shadowood Cove	Perry Owens	Northbrook, IL
Catawba General Service Corp.	Carowood, Country Oaks	Jeffrey E. Gover	York, SC
Citizens and Southern Mortgage Co.	Clear Springs	Henry Turner	Columbia, SC
Coastal Utilities, Inc.	Windmill Harbour	Leon Gilbert	Hilton Head, SC
Commonwealth Utility Co., Inc.	Cabon Creek	Preston H. Callison, Esq.	Columbia, SC
Courtenay Utilities, Inc.	Newry & Vicinity	Wayne Dorr	Newry, SC

SEWERAGE UTILITIES OPERATING IN SOUTH CAROLINA AS OF JUNE 30, 1985 — Continued

Name of Utility	Service Area	Managing Officer/Addressee	Address
DeBordieu Colony Club, Inc.	DeBordieu Colony	Wallace F. Pate	Georgetown, SC
Development Service, Inc.	Dutchbrook, vicinity of Dutch Square	L. Arlen Cotter, Pres.	Columbia, SC
Dunmovin Utilities, Inc.	Dunmovin Subdivision, Island Estates	Chris Evans	Summerville, SC
Folly Utilities	Town of Folly Beach	Robert G. Irick	Charleston, SC
Fort Lawn Development Company	Baker Place	Eugene W. Melton, Pres.	Fort Lawn, SC
Fripp Island Sewer Systems, Inc.	Fripp Island Development	Broadus Thompson	Fripp Island, SC
Gatewood Treatment Plant	Gatewood Subdivision	Calhoun Mays, III	Greenwood, SC
General Utilities, Inc.	Lloydwood	W. E. Sellars, Pres.	Columbia, SC
Graniteville Company, Inc.	Graniteville & Vicinity	Jerry Howell	Graniteville, SC
Greenwood Savings and Loan Association	Highland Forest Subdivision	Thomas W. Jackson	Greenwood, SC
Harbor Island Utilities, Inc.	Harbor Island	R. Arnold Ellison, Jr.	Hilton Head, SC
Harkin Utility Service, Inc.	Eastwood Acres Subdivision	John Harkin	Orangeburg, SC
Hartwell Properties, Inc.	Chickasaw Point Development	Roger A. Hard	Charlotte, NC
W. M. Harvey Investment Properties, Inc.	Oakmont	W. M. Harvey, Pres.	Orangeburg, SC
Heritage Utilities, Inc.	Heritage Village, USA	C. Dukes Scott, Esq.	Columbia, SC
Hilton Head Plantation Utilities, Inc.	Point South S/D, Hilton Head Plantation	J. Roy Martin, III	Clover, SC
Island Utilities, Inc.	Area East of 41st Street, Isle of Palms	Harry Lightsey, Esq.	Columbia, SC
Isle of Palms Water Company	Forest Trail, Isle of Palms	Charles A. Way, Pres.	Isle of Palms, SC
Jackson Mills	Jackson Mills Village	Homer Elmore, V. Pres.	Wellford, SC
Kiawah Island Utilities, Inc.	Kiawah Island	Tom Duncan	Kiawah Island, SC
Lake Murray Utilities, Inc.	Mallard Bay	Albert J. Dooley, Sr., Esq.	Columbia, SC
Lakewood Utilities, Inc.	Vicinity of Rikard Nursing Home	Johnny T. Johnson	Columbia, SC
Lake Wylie Community Utilities	Southwoods Subdivision	John C. Malpeli, III, Owner	Lake Wylie, SC
Leesburg Utilities, Inc.	Yorkshire Extension	B. J. Harrington, Pres.	Columbia, SC
Litchfield Utility Company	Inlet Point, Salt Marsh Cove, Litchfield Retreat, Litchfield Golf Company	Douglas L. Hinds, Esq.	Georgetown, SC
Liteo, Inc.	Leawood	William J. Lawrence, V. Pres.	Sumter, SC
Lockhart Power Company	Monarch, Ottaray Village	W. F. Tribble	Lockhart, SC

SEWERAGE UTILITIES OPERATING IN SOUTH CAROLINA AS OF JUNE 30, 1985 — Continued

Name of Utility	Service Area	Managing Officer/Addressee	Address
Long Cove Club Utilities, Inc.	Long Cove Club Development	Joseph H. Webster, III	Hilton Head, SC
Lost Wilderness, Inc.	Lost Wilderness Subdivision	Gene C. White, Pres.	Lavonia, GA
Lynwood Utility, Inc.	Lynwood	Harold Simmons, Pres.	Charleston, SC
Marina Colony, Inc.	Marina Colony near Murrell's Inlet	William Hagan	Johnsonville, SC
Martha Law Utilities, Inc.	Quail Creek	J. T. McAlister, Pres.	Columbia, SC
Matthews Realty, Inc.	Matown Subdivision	J. S. Matthews	Darlington, SC
Mayfield Park Sewer System	Mayfield Park	Michael M. Rothbery	Columbia, SC
Joseph M. McClellan	Locksley Hall	Joseph M. McClellan	Greenwood, SC
Meadowbrook Water Works, Inc.	Meadowbrook Subdivision,	R. D. Ferguson	Spartanburg, SC
Midlands Utilities, Inc.	Dutch Village, Lincolnshire, Raintree Acres, Wash- ington Heights, Varnarsdale, Bellemede, Park- wood, Royal Hills, Westgate, Arborgate, Northwood Estates, Windy Hill, Charwood	Charlie Parnell	Lexington, SC
Mountain Bay Estates Utility, Co., Inc.	Mountain Bay Estates	Larry Estridge	Atlanta, GA
C. T. McDade d/b/a Northfall Acres Wastewater System	Northfall Acres Subdivision	C. T. McDade, Owner	Hodges, SC
Oak Grove Estates Utilities, Inc.	Oak Grove Estates	S. V. Oxner, Owner	Lexington, SC
Old Barnwell Road Utility Company, Inc.	Land of Lakes, Southgate, Wrenwood	Albert Sturkie	Columbia, SC
Palmetto Utilities of Spartanburg, Inc.	Linville Hills	Fred Coats	Spartanburg, SC
Paris Mountain Utilities	Altamont Forest	Joe W. Hiller, Jr.	Greenville, SC
Park Utilities	Victorian Lakes Mobile Home Park, Rolling Meadows Mobile Home Park of West Columbia, Hermitage Farms Mobile Home Park of Camden	Paul R. Bouknight, Owner	Columbia, SC
Piedmont Development of Greenwood	Willows Subdivision	Thurman Bishop, Esq.	Greenwood, SC
Piedmont Utilities Corp.	Heatherwood, Eastbriar	Oscar F. Molin, Jr., Pres.	Seneca, SC
Pilot Corporation	Rivermont West	Walter Keenan	Columbia, SC
Pimlico Corporation	Pimlico Subdivision	Alton H. Parks	Charleston, SC
Pinebrook of Spartanburg	Pinebrook Subdivision	J. P. Hellams, Jr.	Spartanburg, SC
Leon D. Todd, d/b/a Pine Valley Estates Utility	Pine Valley Estates	Leon D. Todd, Jr.	Conway, SC
Pinedale Utility Company	Pinedale, Ashley Creek Village, Guignard Park	Dan Trotter, Pres.	Sumter, SC
Point South Utilities	Point South	James Taylor, Pres.	Yemassee, SC
Quail Hollow Company	Quail Hollow Subdivision	William F. Austin, Esq.	Columbia, SC

SEWERAGE UTILITIES OPERATING IN SOUTH CAROLINA AS OF JUNE 30, 1985 — Continued

Name of Utility	Service Area	Managing Officer/Addressee	Address
Ribaut Insurance Agency	Cherry Hill Estates	Berry L. Johnson, Esq.	Beaufort, SC
Rice Corporation	Look-Up Forest Subdivision	Max M. Rice	Travelers Rest, SC
Rock Springs Development Corp.	Rock Springs Development	Ralph L. Smith, Jr.	Lugoff, SC
Rose Hill Utility Company, Inc.	Rose Hill Plantation	R. Arnold Ellison, Jr.	Hilton Head, SC
Seabrook Island Utilities Corp.	Seabrook Island Development	Richard T. Collier, Pres.	Johns Island, SC
Shelley Enterprises	Shelley Acres	William I. Shelley	Myrtle Beach, SC
S. C. Utilities, Inc.	Gem Lakes Estates	Hugo Sims, III	Orangeburg, SC
Southeastern Real Estate Factors, Inc.	Star Cliffe Estates	S. M. White	Sumter, SC
Swamp Fox Utilities, Inc.	Patriot Place Apts.	Charlie Dorn Smith, Jr.	Turbeville, SC
TCU, Inc.	Tega Cay, Snapper Point	F. William Hargrove	Fort Mill, SC
Tall Pines Utilities, Inc.	Tall Pines	Charles I. Golbert, Esq.	Charleston, SC
Terraceway Service Company, Inc.	Candlewood Parcel A, Prescott Terrace, North 21 Terrace, North 21 Section "E", Star-Lite, Crane Creek, and Candlewood		
Tranquil Utilities, Inc.	South Tranquil Acres	E. D. Sauls, Pres.	Columbia, SC
Twin Lakes of Sumter, Inc.	Twin Lakes of Sumter Subdivision	Chris Evans	Summerville, SC
United Utilities Companies, Inc.	Chambert Forest, Canterbury, The Village, Idlewood, River Forest, Briarcreek, Valleybrook, Stonecreek, Trollingwood, Fairwood	Arthur L. Harper	Sumter, SC
Utilities, Inc.	Charles Towne, Mountainbrook, Caughman Road School	David Ingalls, Esq.	Spartanburg, SC
Valhalla Company	Woodbranch (Formerly Valhalla S/D)	M. R. Bagnal, Jr., Mgr.	Columbia, SC
Village Utilities, Inc.	Chimney Ridge	Robert R. Russell	Columbia, SC
Water Oak Utility Company	Madera Subdivision, Westgate and Madera Apartments	T. G. Daniel, Jr., Pres.	Spartanburg, SC
Wexford Plantation Utility Co.	Moss Creek Plantation	Steven E. Schmidt	Hilton Head, SC
Wildewood Utilities, Inc.	Wexford Plantation, Central Park, Commercial Subdivision	R. Arnold Ellison	Hilton Head, SC
Win-Mar Utilities, Inc.	Wildewood Subdivision	C. Heath Manning, Pres.	Columbia, SC
Woodlands Utilities, Inc.	The Gatherings	Arthur T. Meeder, Esq.	Hilton Head, SC
	Woodland Hills, Woodland Village Apartments, New South Square Apts., Seven Oaks Elementary School, St. Andrews Union 76 Service Station	J. Donald Dial, Esq.	Columbia, SC

TRANSPORTATION DIVISION

The functions of this Division are to enforce the *South Carolina Motor Vehicle Carrier Law, 1976*, as amended, and the Commission's *Rules and Regulations Pertaining to Motor Carriers*. The Law provides for the regulations, supervision and control of persons, firms, corporations, etc., operating motor vehicles used in the business of transporting persons or property for compensation over the highways of the State, and imposes license fees to cover the cost of administration.

The Transportation Division consists of the following Departments:

1. Certificate Department
2. Enforcement and Safety Department
3. Insurance Department
4. Licensing Department
5. Rails and Rail Safety Department
6. Rates and Tariffs Department
7. Registration Department

CERTIFICATE DEPARTMENT

The Certificate Department of the Transportation Division processes all Applications to acquire new authority, amend existing authority, transfer authority from one carrier to another, suspend authority, and to cancel authority.

There are presently 1,507 motor carriers holding intrastate authority granted by this Commission, as follows:

Class	No. of Carriers	Type of Carrier
A	44	Common carrier transporting passengers over regular routes and on regular schedules.
B	1	Common carrier transporting passengers not over regular routes or on regular schedules.
C	267	Common carrier — taxicabs and charter buses — not operating over regular routes or on regular schedules.
D	11	Common carrier transporting property over regular routes and on regular schedules.
E	988	Common carrier transporting property over irregular routes and on irregular schedules.
F	196	Contract carrier transporting property over irregular routes and on irregular schedules.

Notices of Filing (which must be published in newspapers of general coverage in the affected service areas) are prepared on Applications for Classes A, Charter C, D, E, and F, for new authority, and to transfer or amend existing authority. Notices of Filing were prepared on 235 Applications during this fiscal year, and 25 public hearings were held, as indicated below:

HEARINGS HELD DURING 1984-85 FISCAL YEAR

Matters Heard	DISPOSITION					
	Number of Hearings	Approved	Denied	Dismissed	Continued	Pending
Class A-Restricted						
For New Certificate	1			1		
Class C Charter						
For New Certificate	1	1				
Class E						
For New Certificate	20	16	1		2	1
Petition for Rule to Show Cause	3	2				1
Fiscal Year Totals	25	19	1	1	2	2

Applications for Class A (Restricted) and Class C (Taxicab) Certificates do not usually require Notices of Filing, or hearings. It is usual procedure for each of these Applications, after going through the acceptance process, to be presented to the Commission for a decision.

The Certificate Department processed and issued 547 Orders during the fiscal year. The majority of the Orders involved the issuance of Certificates of Public Convenience and Necessity, which are only issued after the motor carrier has filed all applicable insurance, rates, and fees for license tags.

There were 547 Certificates of Public Convenience and Necessity processed during the fiscal year, as outlined below:

CERTIFICATES PROCESSED DURING 1984-85 FISCAL YEAR

Class of Certificates	New	Amended	Transferred	Cancelled	Suspended	Total Certificates Processed
Class A	7				13	20
Class B					1	1
Class C	35	6			61	109
Class D					1	1
Class E	216	44	7		78	369
Class F	18	7			15	47
Fiscal Year Totals	276	57	7	169	38	547

MOTOR CARRIER TRANSACTIONS 1984-1985

	Monthly Total	New Authority Granted	Amended	Cancelled	Suspended	Suspension Lifted	Transferred	Transfer of Stock Sale	Leased	Denied	Withdrawn	Reinstated	Reconsidered	Corrected	Dismissed	Rescinded
July	48	34	10	..	1	1	1	1
August	40	35	3	1	1
September	50	25	7	3	3	2	6	4
October	64	31	2	13	9	1	..	1	2	2	3
November	32	17	2	5	7	1
December	30	13	2	8	3	..	1	1	..	1	1	..
January	42	23	3	4	6	..	1	1	2	2	..
February	53	31	8	7	2	1	1	1	2
March	34	23	..	4	5	..	1	..	1
April	62	40	6	5	3	1	1	1	2	3	..
May	110	38	6	56	2	1	2	1	4
June	42	27	2	1	2	1	1	8
Fiscal Year Totals	607	337	51	106	38	2	9	7	0	3	10	4	2	0	15	23

MOTOR CARRIER TRANSACTIONS BY CLASS 1984-1985

	Total Transactions	New Authority Granted	Amended	Cancelled	Suspended	Suspension Lifted	Transferred	Transfer of Stock Sale	Leased	Denied	Withdrawn	Reinstated	Reconsidered	Corrected	Dismissed	Rescinded
Class A	24	9	..	13	1	1	..
Class B	1	1
Class C	122	39	4	61	7	..	1	1	5	4
Class D	0
Class E	405	261	39	26	24	1	8	6	..	3	7	3	2	..	7	18
Class F	55	28	8	5	7	1	3	2	1
Fiscal Year Totals	607	337	51	106	38	2	9	7	..	3	10	4	2	..	15	23

ENFORCEMENT AND SAFETY 1984-1985

The enforcement of Motor Vehicle Carrier Law of the State, Section 58-23-10 through 58-23-60 of the *South Carolina Code of Laws*, 1976, as amended, is carried out by the staff of thirty-nine Inspectors stationed throughout the State. During the Fiscal Year 1984-1985, these Inspectors made a total of 7,923 arrests with a total of \$294,314.00 in fines.

All of the Inspectors are certified by the South Carolina State Law Enforcement Division, and all have attended or will have attended in the near future the South Carolina Criminal Justice Academy as required by law. They wear uniforms and patrol in marked cars with two-way radios. The patrol cars are also equipped with C.B. radios which are used to contact other law enforcement agents and to assist the public. Their duties and responsibilities are to insure that the motor carriers under the jurisdiction of the Public Service Commission comply with the *South Carolina Motor Vehicle Carrier Law* and the Commission's *Rules and Regulations Pertaining to Motor Carriers*. The Inspectors investigate violations, issue warrants of arrest, initiate legal proceedings for violations, and work with the regulated carriers and with the public in helping them comply with the law. The Inspectors made 4,891 regulatory arrests with \$188,029.00 in regulatory fines during the fiscal year.

The Commission's Safety Program was started in 1971, and we now have twenty-nine Safety Inspectors stationed throughout South Carolina who specialize in Safety work. They conduct safety surveys of motor vehicles on Highways and at terminals of for-hire and private carriers, express companies and bus lines. During the Fiscal Year 1984-1985, the Safety Inspectors made 5,975 Safety Inspections from which 1,436 vehicles were placed out-of-service, and 3,032 Safety Arrests were made with \$106,285.00 in Safety Fines.

On March 13, 1985 House Bill 2043 giving the Public Service Commission authority in relation to safety on Private Carriers was passed by the Senate. This Bill was signed into law by the Governor on March 19, 1985.

ENFORCEMENT REPORT FISCAL YEAR 1984-1985

	No Intrastate Authority	Operating Out of Scope of SCPSC Authority	No Interstate Authority (Interstate Carrier Domiciled in SC)	PSC Tag Violation (Intrastate)	PSC Tag Violation (Interstate)	No Registered Certificated Interstate Authority	No Registered Exempt Interstate Authority	No Certificated Cab Card	No Exempt Cab Card	No Certificated Identification Stamp	No Exempt Identification Stamp
July 1984	4	0	3	9	19	35	21	134	89	149	39
August 1984	13	4	7	11	35	33	9	65	17	79	10
September 1984	8	0	1	3	25	21	14	57	7	65	15
October 1984	16	0	3	13	33	61	13	71	11	93	19
November 1984	10	1	8	16	41	38	31	77	29	83	13
December 1984	19	0	1	8	14	19	4	49	11	40	6
January 1985	4	0	2	8	14	30	17	57	21	65	15
February 1985	6	0	3	5	17	46	15	195	30	376	50
March 1985	12	3	3	12	27	41	26	148	32	233	31
April 1985	19	2	3	20	22	32	15	82	36	106	23
May 1985	9	5	2	23	22	39	28	81	32	114	28
June 1985	7	1	3	16	25	32	20	65	60	74	28
	Sec. 58-23-20	Sec. 58-23-40	Sec. 58-23-80, R. 103-152	Sec. 58-23-40, R. 103-154	Sec. 58-23-80, R. 103-152	Sec. 58-23-640, R. 103-251	Sec. 58-23-640, R. 103-261	Sec. 58-23-640, R. 103-253-5	Sec. 58-23-640, R. 103-263-4	Sec. 58-23-640, R. 103-257-1	Sec. 58-23-640, R. 103-267-1
Fiscal Year Totals	127	16	39	144	294	427	213	1,081	375	1,477	277

**ENFORCEMENT REPORT
FISCAL YEAR 1984-1985**

July 1984	10	No Annual Report on File
August 1984	2	Improper Exempt Cab Card
September 1984	0	Reproduction of Certificated Cab Card
October 1984	0	Improper Certificated Cab Card
November 1984	0	No Interstate Insurance on File
December 1984	0	No Public Liability and Property Damage Insurance on File
January 1985	0	No Cargo Insurance on File
February 1985	0	Violation of Buy and Sell Law
March 1985	0	Improper Shipping Papers
April 1985	3	Driving Under the Influence
May 1985	0	Improper Bills of Lading
June 1985	0	

Fiscal Year Totals	14	Sec. 58-23-80, R. 103-231
	8	Sec. 58-23-640, R. 103-263-4
	4	Sec. 58-23-640, R. 103-256-1
	29	Sec. 58-23-640, R. 103-253-4
	36	Sec. 58-23-640, R. 103-254-1
	13	Sec. 58-23-910, R. 103-170
	14	Sec. 58-23-910, R. 103-173
	0	Sec. 58-23-30
	0	Sec. 58-23-80, R. 177-18.A
	0	Sec. 56-5-2930
	9	Sec. 58-23-20, R. 103-159

**ENFORCEMENT REPORT
FISCAL YEAR 1984-1985**

	Monthly Totals	Total Amount in Fines
July 1984	539	\$ 18,085.00
August 1984	333	\$ 13,708.00
September 1984	263	\$ 10,225.00
October 1984	371	\$ 15,532.00
November 1984	378	\$ 15,195.00
December 1984	188	\$ 7,065.00
January 1985	251	\$ 9,955.00
February 1985	781	\$ 29,266.00
March 1985	602	\$ 23,280.00
April 1985	390	\$ 15,858.00
May 1985	424	\$ 16,155.00
June 1985	371	\$ 13,705.00
Fiscal Year Totals	4,891	\$188,029.00

1984-1985 FISCAL YEAR SAFETY REPORT

Month	Safety Inspections	Out of Service Vehicles	Safety Arrests	Amount in Fines
July, 1984	435	113	462	\$ 14,320.00
August, 1984	532	106	294	\$ 10,155.00
September, 1984	565	123	239	\$ 8,560.00
October, 1984	601	125	328	\$ 11,615.00
November, 1984	419	75	265	\$ 10,370.00
December, 1984	208	21	113	\$ 4,075.00
January, 1985	312	58	175	\$ 6,260.00
February, 1985	228	44	154	\$ 5,600.00
March, 1985	332	59	221	\$ 7,935.00
April, 1985	844	181	244	\$ 8,655.00
May, 1985	661	207	263	\$ 9,250.00
June, 1985	838	324	274	\$ 9,490.00
Fiscal Year Totals	5,975	1,436	3,032	\$106,285.00

TRANSPORTATION DIVISION COMPARATIVE ARREST REPORT

Fiscal Year	Regulatory Arrests	Amount in Regulatory Fines	Safety Inspections	Safety Arrests	Amount in Safety Fines	Total Arrests (Regulatory & Safety)	Total Amount in Fines (Regulatory & Safety)
1980-1981	5,152	\$172,854.00	4,666	4,430	\$132,392.25	9,582	\$305,246.25
1981-1982	4,603	\$160,913.75	5,035	4,422	\$131,480.75	9,638	\$292,394.50
1982-1983	4,253	\$145,585.00	4,148	2,361	\$ 70,360.00	6,614	\$215,945.00
1983-1984	4,373	\$146,987.00	5,142	2,897	\$ 86,768.00	7,270	\$233,755.00
1984-1985	4,891	\$188,029.00	5,975	3,032	\$106,285.00	7,923	\$294,314.00

INSURANCE DEPARTMENT

Section 58-23-10 through 58-23-60, Motor Vehicle Carrier Law of the State of South Carolina, South Carolina Code of Laws, 1976 as amended, under SubArticle VI, Sections 103-170 through 103-180 of the Rules and Regulations Pertaining to Motor Carriers, states that all for-hire intrastate motor carriers of persons or property who are under the jurisdiction of the South Carolina Public Service Commission, must obtain and keep current, on file with the Commission, Public Liability and Property Damage Insurance and Cargo Insurance in at least the minimum limits of liability as prescribed by the Commission.

All Interstate Commerce Commission regulated motor carriers must register with the Commission and also have evidence of Public Liability and Property Damage Insurance on file with the Commission before operating into or through the State of South Carolina.

Insurance filings are accepted only from those insurance companies licensed to do business in the State of South Carolina by the South Carolina Department of Insurance and only on forms as prescribed by the Commission.

The functions of the Insurance Department are to receive and accept insurance filings on these for-hire intrastate and interstate motor carriers. There are approximately eight thousand (8,000) or more filings on intrastate motor carriers and approximately thirty-four thousand (34,000) filings on interstate motor carriers. The Insurance Department receives and reviews about ten thousand (10,000) insurance filings or modifications of filings each month.

The Insurance Department notifies these regulated carriers and Inspectors in their respective districts, of an impending thirty (30) day notice of cancellation of their insurance and if other coverage has not been filed within that time limit, they must cease operation on the date stated in such letter.

Before any motor carrier may commence operating, insurance must be on file with the Commission and must be kept current in order to continue such operations. A motor carrier's authority may be revoked or cancelled by the Commission for failure of the motor carrier to keep insurance on file.

Before any license tags or identification stamps can be issued, the Insurance Department must check each application to see that the proper insurance is on file before releasing the tags or stamps.

The Insurance Department receives and prepares all new ap-

plications for authority on Class C (Taxicab), Class A (Restricted), Class E-Interstate and Class F-Interstate for insurance and license tag fees. Once in compliance, these applications are then given to the proper Department for docketing and Commission decision. The Insurance Department processed approximately two hundred twenty-five (225) of these applications for the period of 1984-1985.

LICENSING DEPARTMENT

Carriers operating within the State of South Carolina on an intrastate basis, and carriers based in South Carolina operating on an interstate basis have, over the years, purchased licenses and paid fees as indicated by the table below.

Statement Showing Receipt and Deposits to the Credit of the State Treasurer, Cost of Administration and Balance for Distribution to Cities and Towns During the Period July 1, 1984 thru June 30, 1985

PUBLIC SERVICE COMMISSION LICENSE TAGS ISSUED:		
Class A Licenses	92	
Class B Licenses	2	
Class C Licenses	1,126	
Class D Licenses	205	
Class E Licenses	9,810	
Class F Licenses	<u>1,084</u>	
Total License Tags Issued	12,319	
TOTAL FEES (Net)		\$1,098,605.42
Receipts from S. C. Tax Commission (Motor Vehicle Registrations)		\$1,511,637.00
TOTAL LICENSE AND REGISTRATION FEES		\$2,610,242.42

With the growth of the motor carrier industry in this State, together with the better enforcement of the Motor Carrier Law made possible by increased enforcement facilities, the work of this division has rapidly increased, as evidenced by revenue receipts as shown in the following, through the fiscal year 1962-1963. However, beginning in 1962 the General Assembly for three successive years, passed legislation which reduced license fees for Class D, E and F Certificate Holders by twenty-five percent per year. This reduction is shown in the revenue as collected since that time along with a portion of the motor vehicle registration fees collected by the South Carolina Tax Commission and credited to the Motor Transportation Fund beginning with the fiscal year 1962-1963.

March 10 through December 31, 1928	\$ 15,200.00
Calendar Year 1929	20,845.99
Calendar Year 1930	39,013.32
Calendar Year 1931	57,310.17
Calendar Year 1932	57,471.26
Calendar Year 1933	63,951.14
Calendar Year 1934	81,300.07
Fiscal Year 1934-1935	86,060.40
Fiscal Year 1935-1936	103,841.91
Fiscal Year 1936-1937	155,945.57
Fiscal Year 1937-1938	212,950.38
Fiscal Year 1938-1939	254,590.53
Fiscal Year 1939-1940	250,728.20
Fiscal Year 1940-1941	281,796.84
Fiscal Year 1941-1942	304,648.97
Fiscal Year 1942-1943	387,572.37
Fiscal Year 1943-1944	389,184.76
Fiscal Year 1944-1945	392,010.25
Fiscal Year 1945-1946	403,790.99
Fiscal Year 1946-1947	466,040.56
Fiscal Year 1947-1948	516,065.26
Fiscal Year 1948-1949	547,532.85
Fiscal Year 1949-1950	561,256.58
Fiscal Year 1950-1951	613,772.53
Fiscal Year 1951-1952	647,230.50
Fiscal Year 1952-1953	670,693.67
Fiscal Year 1953-1954	689,120.74
Fiscal Year 1954-1955	691,751.77
Fiscal Year 1955-1956	755,682.91
Fiscal Year 1956-1957	786,403.41

Fiscal Year 1957-1958	770,190.33
Fiscal Year 1958-1959	800,455.10
Fiscal Year 1959-1960	846,898.69
Fiscal Year 1960-1961	841,078.71
Fiscal Year 1961-1962	870,505.50
Fiscal Year 1962-1963	1,128,437.74
Fiscal Year 1963-1964	900,044.65
Fiscal Year 1964-1965	707,454.95
Fiscal Year 1965-1966	793,226.08
Fiscal Year 1966-1967	847,703.71
Fiscal Year 1967-1968	895,700.40
Fiscal Year 1968-1969	973,913.12
Fiscal Year 1969-1970	1,033,553.27
Fiscal Year 1970-1971	1,084,739.49
Fiscal Year 1971-1972	1,171,000.28
Fiscal Year 1972-1973	1,350,164.33
Fiscal Year 1973-1974	1,228,220.53
Fiscal Year 1974-1975	1,492,578.42
Fiscal Year 1975-1976	1,508,338.54
Fiscal Year 1976-1977	1,627,335.19
Fiscal Year 1977-1978	1,726,752.39
Fiscal Year 1978-1979	1,922,268.15
Fiscal Year 1979-1980	2,020,630.09
Fiscal Year 1980-1981	2,102,895.93
Fiscal Year 1981-1982	2,178,011.92
Fiscal Year 1982-1983	2,174,263.13
Fiscal Year 1983-1984	2,286,431.15
Fiscal Year 1984-1985	2,610,242.42

RAILS AND RAIL SAFETY

The Rail Safety program was initiated to enforce the safety rules and regulations of the State of South Carolina. The program was certified by the Federal Railroad Administration in 1980 pursuant to the Federal Railroad Safety Act of 1970 (45 U.S.C. 435 (d) and 49 C.F.R. 212.33). The program consists of a Chief, a Motor Power and Equipment Inspector, an Operating Practice Inspector and a Track Inspector. The Motor Power and Equipment Inspector is responsible for the inspection and safety compliance of the thousands of pieces of rolling stock of the railroads. The Track Inspector is responsible for all phases of Track inspection and safety compliance for the 2300 plus miles of track in South Carolina.

The Operating Practice Inspector checks for rule violations. The Rails and Rail Safety Department investigates train derailments to determine a cause, investigates crossing accidents where a train or railroad vehicle and a pedestrian or vehicle are involved, and also checks general complaints from the public.

RAILROAD COMPANIES OPERATING IN SOUTH CAROLINA
Year Ending December 31, 1984

Line Haul Companies	Principal Officers	Official Address
Greenville & Northern Railway Co.	M. P. Silver, President	Boston, Massachusetts
Hampton & Branchville Railroad Co.	W. Norris Lightsey, President	Hampton, SC
Lancaster & Chester Railroad	J. B. Bethea, Jr., President	Lancaster, SC
Carolina & Northwestern Railroad	H. H. Hall, President	Washington, DC
Pickens Railroad Co.	Jane Gillespie, President	Pickens, SC
Seaboard System Railroad	Paul Funkhouse, President	Jacksonville, Florida
Southern Railway Co.	H. H. Hall, President	Washington, DC
Terminal Companies		
North Charleston Terminal Co.	Henry R. Moore, President	Atlanta, GA

RAILWAY OPERATING REVENUES AND OPERATING EXPENSES

For Year Ending December 31, 1984

Reporting Company	Operating Revenue	Operating Expenses
Carolina & Northwestern Railroad	46,220,000	30,199,000
Greenville & Northern Railway	265,451	390,368
Hampton & Branchville Railroad	544,414	385,943
Lancaster & Chester Railroad	2,082,996	1,540,845
Pickens Railroad	124,000	115,000
Seaboard System Railroad	2,746,793	2,364,580
Southern Railway	1,144,015	953,018

RAIL INCOME

For Year Ending December 31, 1984

Reporting Company	Net Railway Operating Income	Net Income After Fixed Charges & Other Deductions
Carolina & Northwestern Railroad	16,363,000	8,666,000
Greenville & Northern Railway	(124,917)	(112,747)
Hampton & Branchville Railroad	391,193	158,471
Lancaster & Chester Railroad	121,679	717,330
Pickens Railroad	9,000	(4,530,000)
Seaboard System Railroad	382,213,000	264,774,000
Southern Railway	190,997,000	127,084,000

**MILEAGE OF ROAD OPERATED IN
SOUTH CAROLINA
(Single or First Main Track)
Year Ending December 31, 1984**

Name of Railroad	Number of Miles
Carolina & Northwestern Railroad	53.00
Greenville & Northern Railway	14.67
Hampton & Branchville	21.35
Lancaster & Chester Railroad	28.99
Pickens Railroad	9.30
Seaboard System Railroad	1,656.00
Southern Railway	896.00
Total	2,679.31

**MILES OF ROAD AND YARD SWITCHING TRACKS
(ALL TRACKS)
Year Ending December 31, 1984
TERMINAL COMPANIES**

Name of Terminal Company	Number of Miles
North Charleston Terminal Company	17.00
Total	17.00

RATES AND TARIFFS DEPARTMENT

The Rates, Rails & Rail Safety Department handles and investigates applications and matters involving rates, fares, charges, practices, and facilities of the regulated transportation companies in South Carolina.

The Rates, Rails & Rail Safety Department supervises and maintains a current file of freight, passenger and express tariffs and makes analyses and studies necessary for the Commission's general supervision of the regulated transportation companies. All regulated transportation companies are required to file and receive approval by the Commission for tariffs setting forth all rates, charges, classification, rules, regulations and practices for South Carolina intrastate transportation. The tariff files contain approximately 3,490 current tariffs for which approximately 78,250 supplements and reissues are received annually.

All cases requiring a public hearing are handled on the Commission's Formal Docket. Such cases result from protests filed by interested parties against petitions or applications by the various regulated carriers seeking authority to discontinue or change an existing service, complaints or protests filed against existing or proposed rates, fares, charges or practices of such carriers, and investigations instituted by the Commission upon complaint or its own motion. Formal Docket cases concluded during the 1984 fiscal year are as follows:

Motor Carrier	<u>12</u>	
	12	Total Formal Docket Cases

In some cases matters may be settled or adjusted informally without the necessity of a public hearing, and are handled on the Commission's Informal Docket.

Informal Dockets concluded during the 1983-84 fiscal year are divided as follows:

Railroad	725	
Motor Vehicle	<u>471</u>	
	1,196	Total Informal Cases

REGISTRATION DEPARTMENT

Registration of Certificated and Exempt Commodity Interstate Motor Carriers (Public Law 89-170 — Section 58-23-640)

On April 16, 1971, The South Carolina Motor Vehicle Carrier Law was amended by adding Section 58-23-640 governing the operation of Interstate Carriers Certificated by the Interstate Commerce Commission and Interstate Exempt commodity carriers. Section 58-23-640 authorized the South Carolina Public Service Commission to promulgate rules and regulations pursuant to this Act. The Rules promulgated complied with the standards as recommended and approved by the National Association of Regulatory Utility Commissioners and the Interstate Commerce Commission.

Carriers coming under this category are charged a registration fee of \$25.00, with amendments to the authority as registered \$10.00. Mobile Home Transporters are charged one-half the amendment fee or \$5.00. All motor carriers operating into or through South Carolina under Section 58-23-640 must purchase an identification stamp at \$5.00 per vehicle.

Under the same Section, all exempt carriers operating into or through South Carolina must file a letter with this Commission setting forth their exemption. Fees are identical to those of Certificated Carriers. Funds derived from such fees and charges are retained by the Commission and expended by it to control and police illegal transportation and promote safety on the highways.

Due to cancellation of Certificated Carriers and Exempt Carriers a re-count was made and found that we have 7,335 Certificated Carriers registered and 8,280 Exempt Carriers registered. During the period of July 1, 1984 through June 30, 1985, 1,928 Certificated Carriers registered their authority with this Commission making a total of 9,263. There were 538 registrants of additional authority. For the same period we have 1,220 Exempt Motor Carrier register letter of exemption, making a total of 9,500.

Revenues from Certificated Carriers	\$2,131,950.00
Revenues from Exempt Carriers	\$ 108,390.00
Less Uncollected Sources	\$ 860.00
Total Revenue from 7-1-84 through 6-30-85	\$2,239,480.00