

P9606
1.977
cop-3

S. C. STATE LIBRARY

FEB 17 1978

STATE DOCUMENTS
Ninety-Ninth Annual Report

of the

Public Service Commission
of South Carolina

1976-1977

GUY BUTLER, Chairman
FRED A. FULLER, JR., Vice-Chairman
F. JULIAN LEAMOND
RUDOLPH MITCHELL
J. LEWIS MOSS
J. HENRY STUCKEY
HENRY G. YONCE

} Commissioners

JAMES H. STILL, Executive Director
ROBERT T. BOCKMAN, General Counsel
J. T. SMITH, Director Transportation Division
ROBERT E. McMILLAN, Asst. Director Transportation Division
CHARLES W. BALLENTINE, Director Utilities Division
W. HAROLD GOODING, Assistant Director Utilities Division

PRINTED UNDER THE DIRECTION OF THE
STATE BUDGET AND CONTROL BOARD

Ninety-Ninth Annual Report

of the

Public Service Commission of South Carolina

1976-1977

GUY BUTLER, Chairman
FRED A. FULLER, JR., Vice-Chairman
F. JULIAN LEAMOND
RUDOLPH MITCHELL
J. LEWIS MOSS
J. HENRY STUCKEY
HENRY G. YONCE

Commissioners

JAMES H. STILL, Executive Director
ROBERT T. BOCKMAN, General Counsel
J. T. SMITH, Director Transportation Division
ROBERT E. McMILLAN, Asst. Director Transportation Division
CHARLES W. BALLENTINE, Director Utilities Division
W. HAROLD GOODING, Assistant Director Utilities Division

PRINTED UNDER THE DIRECTION OF THE
STATE BUDGET AND CONTROL BOARD

LETTER OF TRANSMITTAL

OFFICE OF PUBLIC SERVICE COMMISSION

To His Excellency, James B. Edwards, Governor of South Carolina:

Sir:

We have the honor to transmit herewith the Ninety-Ninth Annual Report of the Public Service Commission of South Carolina for the year ending June 30, 1977.

Yours respectfully,

GUY BUTLER, Chairman
FRED A. FULLER, JR., Vice-Chairman
F. JULIAN LEAMOND
RUDOLPH MITCHELL
J. LEWIS MOSS
J. HENRY STUCKEY
HENRY G. YONCE

Commissioners

JAMES H. STILL
Executive Director

ANNUAL REPORT OF THE PUBLIC SERVICE
COMMISSION OF SOUTH CAROLINA

To the General Assembly of South Carolina:

The Public Service Commission has the honor to respectfully submit for your consideration this its Ninety-Ninth Annual Report.

Below is the personnel of the present Commission and the Counties comprising the seven districts:

First District

F. Julian Leamond Charleston, S. C.
Berkeley, Charleston, Clarendon, Colleton, Dorchester

Second District

Rudolph Mitchell Saluda, S. C.
Aiken, Allendale, Bamberg, Barnwell, Beaufort, Edgefield, Hampton, Jasper, Saluda

Third District

Guy Butler, Chairman Greenwood, S. C.
Abbeville, Anderson, Greenwood, McCormick, Newberry, Oconee, Pickens

Fourth District

Fred A. Fuller, Jr., Vice-Chairman Greenville, S. C.
Greenville, Laurens, Spartanburg, Union

Fifth District

J. Lewis Moss York, S. C.
Cherokee, Chester, Chesterfield, Fairfield, Kershaw, Lancaster, York

Sixth District

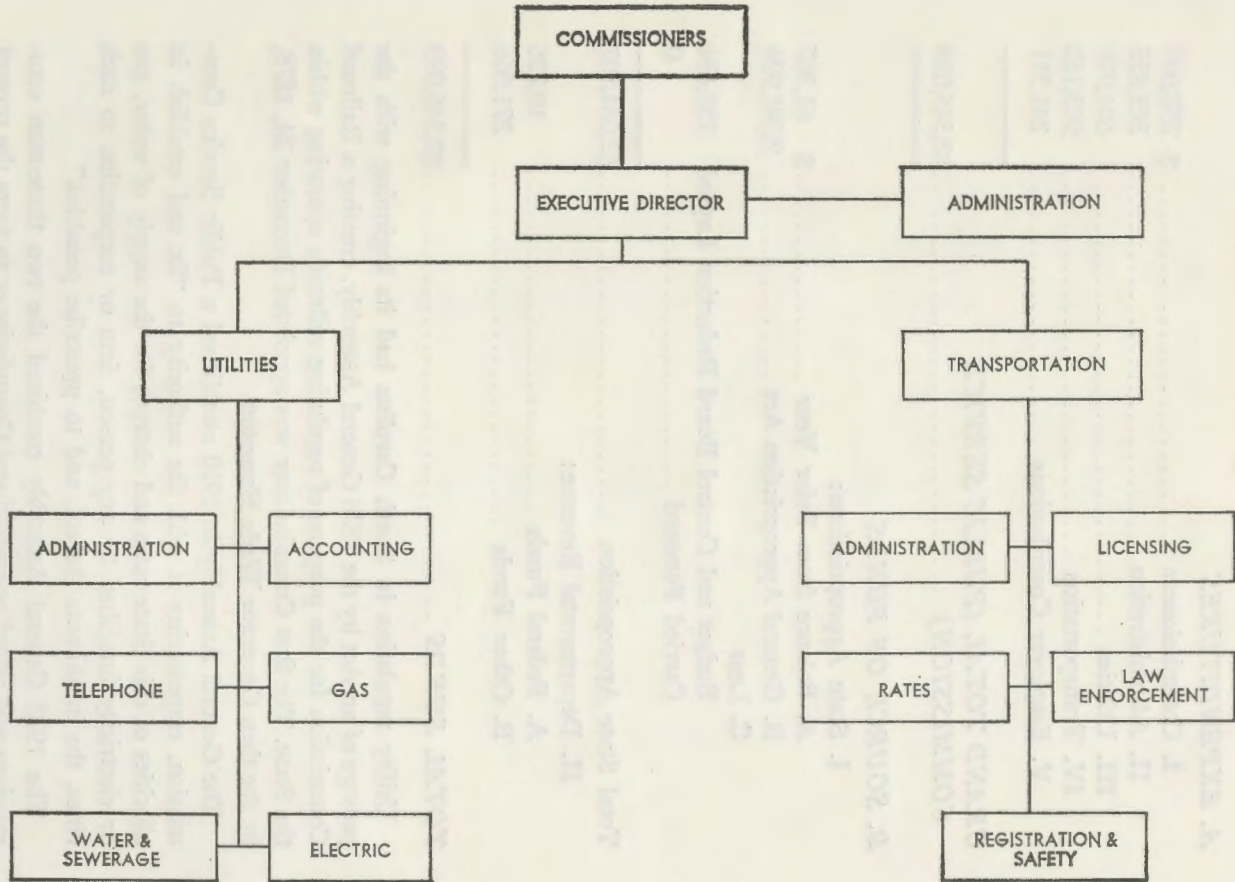
J. Henry Stuckey Kingstree, S. C.
Darlington, Dillon, Florence, Georgetown, Horry, Marion, Marlboro, Williamsburg

Seventh District

Henry G. Yonce Columbia, S. C.
Calhoun, Lee, Lexington, Orangeburg, Richland, Sumter

TABLE OF CONTENTS

	PAGE
Commissioners	3
Organizational Chart	5
Summary of Expenditures	6
Introduction	6
Utilities Division:	
Administration	8
Gas Department	38
Water and Sewerage Department	56
Telephone and Telegraph Department	49
Electric Department	22
Accounting Department	9
Transportation Division:	
Administration	65
Licensing Department	68
Enforcement Department	71
Audit Department	73
Rails and Tariffs Department	74
Registration and Safety Department	79



SUMMARY OF EXPENDITURES

A. EXPENDITURES

I. Commissioners	\$ 292,664
II. Administration	303,855
III. Utilities	604,917
IV. Transportation	903,152
V. Employer Contributions	241,511
GRAND TOTAL (PUBLIC SERVICE	
COMMISSION)	\$2,346,099

B. SOURCE OF FUNDS

I. State Appropriations:	
A. Balance from Prior Year	\$ 61,367
B. General Appropriation Act	2,241,924
C. Less	
Budget and Control Board Reduction Lapsed	238,484
Carried Forward	0
Total State Appropriation	
	\$2,064,807
II. Departmental Revenue:	
A. Federal Funds	10,226
B. Other Funds	271,066
TOTAL FUNDS	
	\$2,346,099

Utility regulation in South Carolina had its beginning with the passage of an Act by the 1878 General Assembly, creating a Railroad Commission for the purpose of regulating railroads operating within the State. The first Commissioner was appointed December 24, 1878, by the then Governor Wade Hampton.

The General Assembly in 1910 established a Public Service Commission, empowering it with the authority to "fix and establish in all cities of this State rates and charges for the supply of water, gas or electricity furnished by any person, firm or corporation to such cities, the inhabitants thereof, and to prescribe penalties."

The 1922 General Assembly combined the two three-man commissions and added one additional Commissioner to form the present seven-man Commission. The name was changed in 1934 to The Public Service Commission.

The present Commission is elected by the Joint Assembly for a term of four years, one from each of the seven Commission Districts.

Authority vested in this body by Statute is to:

1. Regulate and supervise the privately-owned electric utilities as to their rates, charges, services, facilities, practices, accounting procedures, the purchase, sale or lease of utility property and the issuance of securities, as well as administer the Rural Electric Cooperative Act pertaining to territorial boundaries and also administer the Utility Facility Siting and Environmental Protection Act.

2. Approve rates and supervise services of all privately and publicly-owned telephone and telegraph companies as well as radio common carrier companies within the State.

3. Regulate rates and charges, services, facilities, practices and accounting procedures of all intrastate privately-owned gas, water and sewerage companies, and administer the Gas Safety Act enacted by the 1970 General Assembly.

4. Supervise and regulate for-hire motor carriers of persons and property as to authorities, rates, services, charges, schedules, insurance, safety, practices and facilities. Consider applications for Certificates of Public Convenience and Necessity, revoke and suspend same for cause. Issue drivers' permits. The Registration and Safety Act, as passed by the 1970 General Assembly, is also administered by this agency. Enforcement of the rules and regulations of the Transportation Division by uniformed Inspectors in marked patrol cars throughout the State.

During the past fiscal year, the Transportation Division dispensed license tags to 9,274 operating units varying in price from \$7.50 to \$125.00 each, according to payload and issued 13,892 drivers' permits. The various fees assessed produced a revenue of \$1,627,335.00.

As of June 30, 1977, fifty-seven electric, gas, telephone, telegraph, and radio common carrier utilities were operating within the State with a total plant investment of 3.7 Billion Dollars generating gross revenues of 1.3 Million Dollars. The 172 water and sewerage companies operating within the State generated 3.7 Million Dollars of gross revenue.

The monies appropriated for these functions are obtained as follows:

Electric, gas, telephone, telegraph, radio common carrier, water and sewerage companies are assessed on a gross revenue basis for

the operation of the Administration and Utilities Divisions. The funds for the operation of the Transportation Division are deducted from the fees collected from the sale of licenses and the assessment of railroads. The remainder is deposited with the State Treasurer for distribution to the cities and towns, which amounted to \$947,095.

Revenues from the registration of trucks and the sale of identification stickers are used to defray operating expenses appropriated for the administration of the Registration and Safety Act. Any remaining funds are deposited with the State Treasurer.

From the tremendous growth of industry in the State in the past several years, coupled with the expanding economy, as evidenced by the above figures, conservative projections indicate that utility installations will more than double within the next ten years. During the past fiscal year, the Commission processed eight hundred and seventy-seven (877) applications; hearings were held thereon when necessary, and Orders issued.

UTILITIES DIVISION

The function of the Utilities Division of The Public Service Commission is to perform the necessary duties related to the regulation of utilities under the jurisdiction of the Commission. The administrative staff plans, coordinates, directs and supervises the work of its five departments as shown below.

- I. Accounting Department
- II. Electric Department
- III. Gas Department
- IV. Telephone and Telegraph Department
- V. Water and Sewerage Department

The activities of this Division for the fiscal year 1976-77, affecting the various utility groups, are summarized by each Department on the following pages of this report. Two hundred and twenty-five Orders were issued through this Division during the fiscal year, and public hearings were held in connection with one hundred and six of these.

ACCOUNTING DEPARTMENT

The Accounting Department consists of eleven Accountants who report to an Accounting Manager. During the fiscal year, two additional Accountants were added to the Staff.

The primary function of the Accounting Department is to audit the Utility Company after all required data on its request is received and accepted for filing. A Rate Case Audit differs somewhat from audits conducted by a Utility's outside auditors in that Accounting principles and procedures must be based upon regulatory law.

All Rate Cases must be based upon operations of a "normalized" test year and exhibits and testimony for the rate case are based primarily on this requirement. The Company makes adjustments to test year data in order to arrive at a more meaningful basis for the Commissioners to decide upon an equitable rate of return on the Company's investment. These adjustments made by the Company are closely examined for propriety by the Staff, which will make additional adjustments when appropriate, in order to arrive at a more "normalized" year.

Where the Utility is computerized, the Staff uses a computer audiotape to aid in the examination of the records relative to the test year. At the same time sampling of expenses and plant additions are made to verify compliance with this Commission's policies and procedures. Further assurance is made as to proper cut offs of the test year and the revenue, expenses and rate base items are allocated according to proper jurisdiction. After all the checks are made, the books and records are compared to the filing and related Exhibits.

Various controls are reviewed with the proper department. Emphasis is placed upon policies and procedures, and the instructions thereto, stated in the Chart of Accounts for the various types of Utilities. The Chart of Accounts outlines which revenues, expenses and asset accounts that will ultimately determine the Utilities' Rate of Return on Rate Base.

Upon completion of the Audit, the Staff prepares its report. Copies are distributed to each Commissioner, the Company, protestors, members of the Staff and other parties of record. During the hearing, a member of the Staff will testify and submit the report into evidence.

Due to the changes in the level of gas and coal costs, the Accounting Staff has incurred additional areas of responsibility in relation to the Fuel Adjustment Clauses of Electric Utilities and the various

clauses utilized by Gas Utilities. The audit of these clauses requires sampling techniques to verify refunds or additional changes made on the customers' bills. This area of auditing is now performed by the Special Studies Section of the Accounting Department every six months on the larger Utilities.

Another function of the Department is the administration of the Gross Receipts Tax for Regulatory Expenses paid annually by Utilities serving customers in South Carolina. Each Utility must report their revenues received within the State and it is on this basis that the tax assessment is made.

RATE CASES DURING 1976-1977

1. A. D. Hare Water Works
2. Abraham Thomy d/b/a/ Able Mobile Telephone Service
3. Carolina Pipeline Company
4. Carolina Power and Light Company
5. Carolina Water Works
6. Cashion Water Works
7. Citizens and Southern Mortgage Company
8. Clark Estates Water Works
9. Clinton Mills
10. Crest Water Company, Inc.
11. Development Services, Inc.
12. Duke Power Company
13. Eagle Aviation, Inc.
14. Fort Lawn Development Company
15. Gene Bobo Well and Pump Company
16. Glendale Water Corporation
17. Hargray Telephone Company, Inc.
18. Heater Utilities, Inc.
19. Hermitage Water System of Lexington, Inc.
20. Highland Forest Waste Water System
21. Horry Telephone Cooperative, Inc.
22. Hughes Well Drilling and Pump Company, Inc.
23. Hughes Water Systems, Inc.
24. Jungle Shores Water Company, Inc.
25. Kiawah Island Utilities, Inc.
26. Ladson Utilities, Inc.
27. Leesburg Utilities Company, Inc.
28. Lockhart Power Company
29. Marion Colony, Inc.

30. Mid-Carolina Electric Cooperative
31. Morris Communications, Inc.
32. North Pimlico Corporation
33. Old Barnwell Road Utility Company, Inc.
34. Otranto Land Company
35. Peoples Natural Gas Company
36. Piedmont Natural Gas Company
37. Pond Branch
38. Ribaut Insurance Agency, Inc.
39. Ridge Telephone Company
40. South Carolina Utilities, Inc.
41. South Carolina Electric and Gas Company
42. Southern Bell
43. Standard Water Corporation
44. Storm Branch Sewer, Inc.
45. Tega Cay Utilities, Inc.
46. Telepage of South Carolina
47. Terraceway Service Company
48. Trolley Enterprises, Inc.
49. W. M. Harvey Investment
50. Wastewater System
51. Water Distributors, Inc.

The Electric utilities are required to have the approval of the Commission on financing with maturity date of more than one year.

The following is a list of the various securities applied for and authority granted for issuance thereof:

Carolina Power and Light Company
Raleigh, North Carolina

To issue and sell 500,000 additional shares of Common Stock, without par value, pursuant to an automatic dividend reinvestment plan.

To issue and sell 3,500,000 additional shares of Common Stock, without par value.

**Duke Power Company
Charlotte, North Carolina**

To issue and sell 1,500,000 additional shares of Common Stock, without par value, under Stock Purchase Savings Program for employees.

To issue and sell 5,500,000 additional shares of Common and Preferred Stock, without par value.

To issue and sell 500,000 shares of new Preferred Stock \$100 par value, the net proceeds to go toward financing the cost of construction of additions to its electric plant.

To issue and sell \$100,000,000 principal amount of first and refunding mortgage bonds, series due 2006. The net proceeds to go toward financing the cost of construction of additions to its electric plant.

To issue and sell 300,000 additional shares of Common Stock, without par value, the net proceeds to go toward financing the cost of construction of additions to its electric plant.

**South Carolina Electric and Gas Company
Columbia, South Carolina**

To issue and sell additional shares of cumulative Preferred Stock with a par value of \$100.00 per share.

To issue and sell \$50,000,000 of its First and Refunding Mortgage Bonds.

The Accounting Department has prepared tables showing operating revenues, operating expenses, net operating income, state and local taxes paid, and gross plant in service for South Carolina operations only, for Electric, Gas, Telephone and Telegraph, Mobile Communications, Water and Sewerage Utilities operating in South Carolina.

The Tables are as follows:

TABLE A—Privately Owned Electric Utilities Operating in South Carolina. Selected Statistics for South Carolina only. For the Years Ended December 31, 1973-1976.

TABLE B—Gas Utilities Operating in South Carolina. Selected Statistics for South Carolina only. For the Years Ended December 31, 1973-1976.

TABLE C—Telephone and Telegraph Utilities Operating in South Carolina. Selected Statistics for South Carolina only. For the Years Ended December 31, 1975-1976.

TABLE D—Mobile Communications Utilities in South Carolina. Selected Statistics for South Carolina only. For Fiscal and Calendar Year 1976.

TABLE E—Water Utilities Operating in South Carolina. Selected Statistics for South Carolina only. For Fiscal and Calendar Year 1976.

TABLE F—Sewerage Utilities Operating in South Carolina. Selected Statistics for South Carolina only. For Fiscal and Calendar Year 1976.

TABLE A

**PRIVATELY-OWNED ELECTRIC UTILITIES OPERATING IN SOUTH CAROLINA
SELECTED STATISTICS FOR SOUTH CAROLINA ONLY
FOR THE YEARS ENDED DECEMBER 31, 1973-1976**

<i>Company</i>	<i>Gross Operating Revenues</i>	<i>Operating Expenses</i>	<i>Net Operating Income</i>	<i>Total State and Local Taxes Paid</i>	<i>Gross Plant In Service</i>
Carolina Power and Light Company	\$	\$	\$	\$	\$
1973	61,600,167	43,341,957	18,258,210	3,330,856	200,042,489
1974	82,794,407	59,939,528	22,854,879	4,036,760	212,283,510
1975	97,789,137	76,304,750	21,484,387	5,152,204	284,353,782
1976	116,912,875	64,252,937	52,659,938	8,863,976	298,822,835
Clinton Mills					
1973	105,547	124,016	(18,469)	170	167,257
1974	103,671	158,804	(55,133)	169	168,215
1975	134,818	167,830	(33,012)	166	168,527
1976	171,557	172,233	(676)	193	175,065
Duke Power Company					
1973	179,909,103	145,446,608	34,462,495	13,704,150	698,407,927
1974	247,592,583	201,111,892	46,480,691	15,322,978	950,910,328
1975	254,780,000	198,658,000	56,122,000	14,583,000	910,049,000
1976	339,627,000	200,530,000	139,097,000	12,855,000	1,060,241,000
Heath Springs Light and Power Company					
1973	196,368	177,320	19,048	6,175	283,646
1974	221,275	211,869	9,406	11,431	286,259
1975	258,829	244,963	13,866	12,183	287,224
1976	284,084	267,223	16,861	14,248	300,699

Lockhart Power Company

1973	3,666,815	3,463,879	202,936	146,182	8,163,984
1974	4,219,886	3,952,804	267,082	110,777	8,392,121
1975	4,875,192	4,546,994	328,198	125,067	8,569,071
1976	6,022,509	5,122,195	900,314	362,698	8,872,037

South Carolina Electric and Gas Company

1973	162,650,346	126,428,297	36,222,049	13,563,510	714,361,369
1974	228,856,317	186,536,687	42,319,630	14,639,198	741,344,509
1975	263,773,207	212,040,260	51,732,947	16,828,122	770,703,869
1976	275,891,390	181,931,412	93,959,978	21,911,083	797,056,067

Totals

1973	408,128,346	318,982,077	89,146,269	30,751,043	1,621,426,672
1974	563,788,139	451,911,584	111,876,555	34,121,313	1,913,384,942
1975	621,611,183	491,962,797	129,648,386	36,700,742	1,974,131,473
1976	738,909,415	452,276,000	286,633,415	44,007,198	2,165,467,703

TABLE B

**GAS UTILITIES OPERATING IN SOUTH CAROLINA
SELECTED STATISTICS FOR SOUTH CAROLINA ONLY
FOR THE YEARS ENDED DECEMBER 31, 1973-1976**

<i>Company</i>	<i>Gross Operating Revenues \$</i>	<i>Operating Expenses \$</i>	<i>Net Operating Income \$</i>	<i>Total State and Local Taxes Paid \$</i>	<i>Gross Plant In Service \$</i>
Carolina Pipeline Company					
1973	34,901,989	31,688,577	3,213,412	602,521	40,735,127
1974	36,383,829	32,634,796	3,749,033	962,289	41,396,208
1975	39,633,633	35,796,561	3,837,072	1,338,776	44,323,747
1976	41,609,124	32,244,469	9,364,655	3,504,000	42,090,772
Peoples Natural Gas of South Carolina					
1973	2,201,718	2,003,579	198,139	33,997	3,310,064
1974	2,819,472	2,540,380	279,092	77,109	3,496,979
1975	2,973,625	2,742,246	231,379	108,380	3,579,674
1976	3,541,615	2,779,633	761,982	126,600	3,982,196
Piedmont Natural Gas Company					
1973	18,432,866	15,536,977	2,895,889	898,528	37,103,770
1974	20,762,086	17,668,754	3,093,332	885,155	35,871,486
1975	20,359,969	17,700,895	2,659,074	667,672	36,518,599
1976	22,968,000	16,438,000	6,530,000	25,400	40,291,000
South Carolina Electric and Gas Company					
1973	39,692,618	34,030,303	5,662,315	1,955,160	105,707,441
1974	48,750,008	41,399,568	7,350,440	2,032,122	109,767,381
1975	55,378,788	47,505,828	7,872,960	2,489,951	112,771,146
1976	71,948,122	52,690,018	19,258,104	4,182,691	127,887,125

United Cities Gas Company						
1973	1,303,854	1,192,535	111,319	70,895	2,184,803
1974	1,459,842	1,331,130	128,712	59,696	2,296,988
1975	1,555,775	1,374,511	181,264	69,170	2,412,543
1976	1,442,039	1,021,163	420,876	57,547	2,564,542
Totals						
1973	96,533,045	84,451,971	12,081,074	3,561,101	189,041,205
1974	110,175,237	95,574,628	14,600,609	4,016,371	192,829,042
1975	119,901,790	105,120,041	14,781,749	4,673,949	199,605,709
1976	141,508,900	105,173,283	36,335,617	7,896,238	216,815,635

TABLE C

**TELEPHONE AND TELEGRAPH UTILITIES OPERATING IN SOUTH CAROLINA
SELECTED STATISTICS FOR TOTAL SOUTH CAROLINA OPERATIONS
FOR THE YEARS ENDED DECEMBER 31, 1975-1976**

Company	Gross Operating Revenues		Operating Expenses		Net Operating Income or (Loss)		Gross Plant In Service	
	1975	1976	1975	1976	1975	1976	1975	1976
	\$	\$	\$	\$	\$	\$	\$	\$
Bluffton Telephone Company	214,681	300,309	168,336	229,762	46,345	70,547	893,755	1,151,095
Chesnee Telephone Company	383,501	465,579	343,058	421,538	40,443	44,041	2,397,011	2,523,671
Chester Telephone Company, Inc.	1,987,015	2,158,837	1,506,185	1,640,073	480,830	518,764	7,843,046	8,407,222
Continental Telephone Company of South Carolina	2,022,393	2,346,154	1,553,786	1,781,200	468,607	564,954	8,671,631	9,454,129
Farmers' Telephone Cooperative	4,570,408	5,530,337	3,669,100	4,299,078	901,308	1,231,258	24,433,969	27,162,353
Fort Mill Telephone Company	1,153,865	1,353,381	934,498	1,076,178	219,367	277,203	5,112,820	5,327,954
General Telephone Company of South Carolina	30,050,124	34,971,000	22,522,943	26,079,763	7,527,181	8,891,237	101,689,154	109,080,124
Hargray Telephone Company, Inc.	2,290,052	3,136,790	1,677,219	2,264,126	612,833	872,664	7,696,472	12,141,263
Heath Springs Telephone Company	111,618	132,352	80,011	91,183	31,607	41,169	341,064	366,181
Home Telephone Company	1,810,398	2,174,447	1,321,766	1,582,021	488,632	592,426	9,350,147	12,672,869
Horry Telephone Cooperative	2,823,006	3,681,511	2,453,016	3,038,813	369,990	642,699	20,126,831	22,999,394
Inman Telephone Company, Inc.	701,287	797,870	517,956	597,090	183,331	200,780	2,804,340	3,092,164
Lancaster Telephone Company	2,998,208	3,581,791	2,559,453	3,022,379	438,755	559,412	10,158,057	11,113,402
Lockhart Telephone Company	89,668	105,015	62,525	85,432	27,143	19,583	340,087	344,856
McClellanville Telephone Company	190,413	221,435	162,549	175,800	27,864	45,635	889,926	916,362
Mid-Carolina Telephone Company	417,125	460,628	317,023	339,331	100,102	121,297	16,306,606	17,516,587
Norway Telephone	83,291	110,440	56,557	67,883	26,734	42,557	348,935	365,334
Palmetto Telephone Cooperative	1,004,822	1,229,635	881,697	1,161,980	123,125	67,656	8,858,969	10,459,775
Piedmont Telephone Cooperative	1,090,157	1,247,059	858,188	947,679	231,969	299,380	8,792,456	9,354,573
Pond Branch Telephone Company	850,456	982,805	705,154	815,967	145,302	166,838	4,965,952	7,186,566
Ridge Telephone Company	192,658	211,597	168,583	182,831	24,075	28,766	1,207,106	1,307,049
Ridgeway Telephone Company	145,077	163,674	97,993	112,290	47,484	51,384	685,163	787,896
Rock Hill Telephone Company	6,290,048	7,712,319	5,148,520	6,313,576	1,141,528	1,398,743	24,837,241	25,521,856
Sandhill Telephone Company	1,410,088	1,666,728	910,591	1,013,270	499,497	653,458	7,431,990	7,784,699
Southern Bell Telephone and Telegraph Company	259,940,914	303,872,541	214,881,563	248,671,538	45,059,351	55,201,003	797,953,204	878,782,528
St. Matthews Telephone Company	642,850	715,389	441,357	510,995	201,493	204,394	3,141,486	3,432,481
St. Stephen Telephone Company	501,966	559,766	366,460	428,542	135,506	131,223	1,997,300	2,063,045
United Telephone Company/Carolinas	13,256,363	15,604,303	9,617,588	11,482,698	3,638,775	4,121,605	52,889,365	57,259,353
West Carolina Telephone Cooperative	857,974	904,747	653,636	728,813	204,338	175,934	5,111,327	5,562,707
Williston Telephone Cooperative	678,372	768,977	498,004	609,589	180,368	159,388	4,252,901	4,489,968
South Carolina Telephone Corporation	1,591,940	2,590,410	1,249,648	1,974,632	342,292	615,778	9,953,877	12,703,655
Western Union1	N/A	263,765	N/A	226,111	N/A	37,654	N/A	720,559
Totals	340,350,738	400,021,591	276,384,563	321,972,161	63,966,175	78,049,430	1,151,482,188	1,272,051,670

* Total Company Operations.

1 South Carolina Income apportioned by Plant In Service in South Carolina.

TABLE D

**MOBILE COMMUNICATIONS OPERATING IN SOUTH CAROLINA
SELECTED STATISTICS FOR SOUTH CAROLINA OPERATIONS ONLY
FOR THE YEAR ENDED DECEMBER 31, 1976**

<i>Company</i>	<i>Gross Operating Revenues \$</i>	<i>Operating Expenses \$</i>	<i>Net Operating Income (or Loss) \$</i>	<i>Gross Plant In Service \$</i>
Able Thomy d/b/a/ Able Answering Service	52,340.00	55,853.00	(3,513.00)	81,917.00
All Services, Inc.	63,388.73	63,388.73	—0—	N/A
Camden Mobile Communications	3,105.00	5,658.09	(2,553.09)	N/A
Columbia Telephone Answering and Radio Paging Services, Inc.	135,714.58	135,714.58	—0—	N/A
Eagle Aviation	—0—	—0—	—0—	N/A
Evans Radio Company	150,885.65	116,513.53	34,372.12	168,825.44
Morris Communication, Inc.	574,917.35	543,600.06	31,317.29	366,391.13
Myrtle Beach Radiotelephone and Paging Service	79,504.15	63,743.34	15,760.81	162,131.45
Parker Electronics	69,068.00	74,415.00	(5,347.00)	112,528.26
Rock Hill Mobile Communications	1,216.66	1,216.66	—0—	N/A
Telepage of South Carolina	103,654.00	90,108.00	13,546.00	12,660.00
Totals	<u>1,233,794.12</u>	<u>1,150,210.99</u>	<u>83,583.13</u>	<u>904,453.28</u>

N/A Not Available.

TABLE E

**WATER UTILITIES OPERATING IN
IN SOUTH CAROLINA
SELECTED STATISTICS FROM ANNUAL REPORTS
SOUTH CAROLINA ONLY
FOR FISCAL YEAR AND CALENDAR YEAR, 1976**

<i>Company</i>	<i>Gross Operating Revenues</i>	<i>Operating Expenses</i>	<i>Net Operating Income or (Loss)</i>
	\$	\$	\$
Brookgreen Water Corporation	12,111.00	13,220.94	(1,109.94)
1 Carolina Water Service	382,105.00	311,933.00	70,172.00
Chinquapin Properties, Inc.	5,569.50	4,797.54	771.96
Clinton Mills	19,609.05	40,789.24	(21,180.19)
Clover Hill Water System	14,869.63	3,993.48	10,876.15
2 Commodore Utility Corporation	79,408.00	67,568.00	11,840.00
2 Davis Utilities, Inc.	39,505.07	28,462.82	11,042.25
1 DeBordieu Colony Club, Inc.	8,088.00	3,026.00	5,062.00
Dinkins Water Company	5,039.82	4,918.41	121.41
Duke Power Company	911,335.00	1,237,213.00	(325,878.00)
2 Edenwood Water Company	41,717.00	40,621.00	1,096.00
2 Glendale Water Corporation	93,580.00	113,932.00	(20,352.00)
Hare, A. D. Water Works	58,120.82	55,074.60	3,046.22
1 Heater Utilities, Inc.	245,302.89	214,056.47	31,246.42
Hughes Well Drilling and Pump	70,647.15	97,159.30	(26,512.15)
Isle of Palms	102,061.00	102,061.00	—0—
1 Joanna Water and Sewer Company	65,400.75	50,442.82	14,957.93
1 Lake Murray Water and Sewer	8,458.00	4,649.00	3,809.00
Lockhart Power Company (Lockhart Village)	14,934.00	15,255.00	(321.00)
(Monarch Village)	36,351.00	38,619.00	(2,268.00)
1 Oak Grove Utilities Corporation	10,486.91	6,613.57	3,873.34
1 Seabrook Utilities Corporation	17,120.28	26,734.17	(9,613.89)
2 Tacoma Utilities, Inc.	16,647.08	17,975.23	(1,328.15)
2 Tranquil Utilities	20,094.00	19,832.00	262.00
United Merchants & Manufacturers	8,421.43	—0—	8,421.43
Valley Park Water System	14,106.95	11,811.27	2,295.68
Water Company of Edisto Beach	24,893.28	18,496.95	6,396.33
Water Distributors	147,107.00	147,107.00	—0—
1 Westoe Plantation Land Company	7,104.00	4,918.00	2,186.00
Westside Water Company	17,067.36	17,067.36	—0—
	<u>2,497,260.97</u>	<u>2,718,348.17</u>	<u>(221,087.20)</u>
Other Water Utilities	72,151.21	94,463.68	(22,312.47)
Totals	<u><u>2,569,412.18</u></u>	<u><u>2,812,811.85</u></u>	<u><u>(243,399.67)</u></u>

1 Revenues reported separately on Sewerage Report.

2 Combined Revenue (Sewerage) not broken down.

TABLE F

**SEWERAGE UTILITIES OPERATING IN
SOUTH CAROLINA
SELECTED STATISTICS FROM ANNUAL REPORTS
SOUTH CAROLINA ONLY
FOR FISCAL YEAR AND CALENDAR YEAR, 1976**

<i>Company</i>	<i>Gross Operating Revenues</i>	<i>Operating Expenses</i>	<i>Net Operating Income or (Loss)</i>
	\$	\$	\$
Alpine Utilities	155,511.32	131,876.86	23,634.46
2 Aqua Water Company	7,820.00	7,820.00	—0—
Artistic Builders	5,307.45	3,401.27	1,906.18
Brookside Sewer District	6,925.00	6,925.00	—0—
Bush River Utilities	9,970.00	15,279.00	(5,309.00)
1 Carolina Water Service	119,612.00	150,144.00	(30,532.00)
Consolidated Utilities, Inc.	7,710.00	15,016.00	(7,306.00)
Country Club Sewer	6,608.58	4,449.62	2,158.96
1 DeBordieu Colony Club	13,004.00	2,600.00	10,404.00
Delta Investment Company	10,356.00	10,345.00	11.00
Development Service, Inc.	61,819.23	42,631.95	19,187.28
Environmental Specialist	20,010.05	19,431.49	578.56
Farrow Terrace	6,368.50	6,134.33	234.17
2 General Utilities	21,860.74	16,626.14	5,234.60
Sedgefield Sewerage	27,559.00	43,853.74	(16,294.74)
Fripp Island Development	13,500.00	6,557.95	6,942.05
Greenhurst Utility Company	7,958.00	7,958.00	—0—
1 Heater Utility	117,063.30	142,786.29	(25,722.99)
2 Holly Utilities	10,813.91	10,813.91	—0—
James Island Plantation	11,816.49	9,700.19	2,116.30
1 Joanna Water and Sewer	45,466.27	49,978.87	(4,512.60)
Ladson Utility	17,292.61	23,166.58	(5,873.97)
1 Lake Murray Water and Sewer	6,246.00	8,699.00	(2,453.00)
Leesburg Utility, Inc.	9,917.50	12,714.67	(2,797.17)
Lynwood Utility, Inc.	10,171.47	8,182.13	1,989.34
2 Mt. Gilead Realty Company	5,000.00	5,000.00	—0—
1 Oak Grove Estates Utility	7,171.50	6,642.09	529.41
Ohio Construction and Engineering	5,934.10	5,934.10	—0—
Otranto Land Company	26,774.88	25,533.18	1,241.70
Pimlico Utilities Company	11,346.08	28,026.02	(16,679.94)
1 Pinedale Utility Company	7,605.26	7,880.70	(275.44)
Quail Hollow Company	25,524.00	10,945.00	14,579.00
2 Seabrook Utility Corporation	17,120.28	12,000.00	5,120.28
St. James Utilities	29,688.00	29,688.00	—0—
Tall Pines Utilities, Inc.	46,119.00	10,097.00	36,022.00
2 Terraceway Service Company	91,334.06	119,017.69	(27,683.63)
Utilities, Inc.	5,274.50	8,267.74	(2,993.24)
1 Westoe Plantation Land Corporation	9,042.00	4,918.00	4,124.00
2 Wikoff Utilities, Inc.	12,691.68	13,359.72	(668.04)
1 Woodland Utility	16,075.00	9,924.52	6,150.48
Woodside—Woodview	22,792.00	17,134.44	5,657.56
	<u>1,070,879.76</u>	<u>1,071,460.19</u>	<u>(580.43)</u>
Other Sewer Utilities	88,184.98	140,847.54	(52,662.56)
	<u>1,159,064.74</u>	<u>1,212,307.73</u>	<u>(53,242.99)</u>

1 Revenues reported separately on Water Report.
2 Combined Revenue (Water) not broken down.

ELECTRIC DEPARTMENT

The Electric Department is responsible for providing the Commission with data and information necessary for the regulation of the privately-owned Electric Utilities operating in South Carolina. The Commission requires the Electric Utilities under its jurisdiction to provide adequate service at reasonable rates that provide the Utilities with not more than a reasonable return on the fair values of properties devoted to the public service.

The Electric Department also handles service and high bill complaints and during the fiscal year 324 formal complaints were investigated. Numerous other complaints and requests for information were received over the telephone and were handled without a formal investigation.

In September of 1976 the Commission installed a toll free line so consumers throughout the State could call the Commission free of charge and register complaints or request information. The Electric Department received over 150 WATS line calls during the fiscal year.

Each of the three large electric utilities are planning and building new generating plants, transmission and distribution lines so that adequate electric power will always be available for present customers and any others that may locate in this State.

South Carolina customers are receiving some power from the Clark Hill Project and Hartwell Project through transmission lines of South Carolina Public Service Authority, Duke Power Company and South Carolina Electric & Gas Company.

The major utilities operating in South Carolina as well as neighboring utilities in Georgia and North Carolina are connected by numerous high voltage transmission lines and, in case of emergency, power is transmitted between the interconnected companies affording the ultimate consumer a better and more continuous supply of power.

The VACAR Group of the Southeastern Electric Reliability Council is a group of electric utilities operating in Virginia, North Carolina and South Carolina. The Reliability Council, Regional and National, was formed to increase the reliability of the bulk electric power supply of the National and the several Area Councils.

Carolina Power and Light Company, Duke Power Company, South Carolina Electric and Gas Company, South Carolina Public Service Authority, Virginia Electric and Power Company and several smaller utilities are in the VACAR Group and these companies exchange information on planning, construction, system loads and other matters affecting the bulk power supply of this area.

The South Carolina residential electric consumer, after having enjoyed continually decreasing costs from 1931 to 1969, has now begun to feel the effects of inflation. Due to the rapidly increasing costs of money, fuel and other items that go into the cost of providing electric service, the Commission has granted the electric utilities under its supervision increases in rates in order that the companies can continue to provide adequate electric service. In spite of these increases, the average South Carolina residential consumer pays an average of 3.42 cents per KWH, compared to the National average rate of 3.45 cents per KWH.

A chart has been prepared comparing the residential electric consumption and the average price paid by the South Carolina consumers with the average consumption and average price paid by the average United States consumer. This chart is printed on one of the following pages.

It is believed that there is no power shortage in South Carolina, and further that the organizations in South Carolina that generate and sell electric service will provide adequate power at reasonable rates for the present and future needs of this State. In fact, at this time, there are new generating facilities under construction by both privately-owned and publicly-owned utilities within the State.

It is interesting to note that generating stations constructed in recent years by South Carolina Utilities have been among the most efficient in the United States and recently Duke Power Company was reported to have the second most efficient generating system in this Country, as well as the most efficient generating unit.

RATES

On January 20, 1977, the Commission Staff filed a petition with the Commission to request a generic hearing concerning reserve capacity, load management techniques, time-of-day pricing, peak load pricing, and other current rate designs being considered among utilities across the nation.

It is believed that much valuable testimony was received during the two-week proceeding from South Carolina Electric and Gas Company, Duke Power Company, Carolina Power and Light Company and various interested parties that were in attendance and presented testimony.

During 1976 the 628,761 residential customers in South Carolina served by the privately-owned electric utilities paid \$246,115,800 for

7,198,655,601 kilowatt-hours. The average South Carolina customer used 11,499 kilowatt-hours during the year, for which he paid a total of \$391.43 at an average rate of 3.42 cents per kilowatt-hour, as compared to the average customer throughout the United States, who used 8,360 kilowatt-hours for which he paid a total of \$297.24 at an average rate of 3.45 cents per kilowatt-hour during 1976.

The average rate paid in South Carolina is lower than the average rate paid by all residential customers in the United States, including those customers in the Tennessee Valley and other areas where publicly-owned power is provided. In South Carolina, if Santee-Cooper residential statistics were included with those of the privately-owned utilities, the South Carolina average rate probably would be even lower.

There are 2,738 large industrial customers of the privately-owned utilities in South Carolina who purchased 13,179,074,051 kilowatt-hours at an average rate of 1.93 cents per kilowatt-hour, which is below the power rates in a large part of this Nation.

Industries now located within South Carolina and other industries desiring reasonable electric power rates will find that electric power can be secured throughout practically the entire State at very reasonable rates.

RURAL ELECTRIFICATION

The growth of rural electrification in South Carolina has been very rapid. There are now nearly half a million rural and suburban electric customers in South Carolina receiving central station service; that is, they are served by the same generating stations that serve the urban customers. It is believed that practically every rural and suburban home in South Carolina that desires electric service now has or can secure electric service. Of course, there are isolated cases where several miles of line would be required to serve a single home far removed from other homes, or even a fishing shack or a river, and where the cost of providing service is greatly out of proportion to the use to be made of electric service.

The big job left to be done is in connecting those customers living on present lines, who for various reasons, have not secured electric service and those new customers who build new homes adjacent to present lines and in increasing the capacity of present lines to take care of the greatly increased loads due to the use of more and more time saving and money-saving convenient electric appliances.

The Commission and Staff have always worked with all potential electric consumers and have helped thousands of them to secure central station electric service.

RURAL TERRITORY ACT

The General Assembly passed the "Rural Territory Act" in 1969 and the Commission, pursuant to the Act has required all "Electric Suppliers" to file maps with the Commission showing rural electric lines in existence as of July 1, 1969. As of July 1, 1971, mylar maps of all counties in South Carolina had been filed with the Commission and negotiations between the several "Electric Suppliers" was begun.

Territory in practically all of South Carolina has been agreed upon by the "Electric Suppliers", and Orders approving the allocation of territory have been issued by the Commission.

SITING ACT

The 1971 General Assembly passed an Act to give the Commission authority over "UTILITY FACILITY SITING AND ENVIRONMENTAL PROTECTION" effective January 1, 1972.

The larger utilities are now advising the Commission of planned construction within the next ten years and of probable construction within the next twenty years.

Engineers in the Electric Department perform such other duties as assigned by the Commission.

A number of statistical tables and charts are included in this report to show the growth and health of the electrical utilities under jurisdiction of this Commission.

INSTALLED GENERATING CAPACITY IN SOUTH CAROLINA—JUNE 30, 1976

	INSTALLED CAPACITY-KILOWATTS				
	Fossil Steam	Internal Combustion Turbine	Nuclear Steam	Hydro	Total
PRIVATELY-OWNED					
Carolina Power & Light Company					
Darlington County		630,000			630,000
H. B. Robinson	203,635	16,320			219,955
H. B. Robinson			768,681		768,681
Total	203,635	646,320	768,681		1,618,636
Duke Power Company					
Boyd's Mill				220	220
Buzzard Roost	16,100	196,000		13,200	225,300
Cedar Creek				39,500	39,500
Dearborn				35,600	35,600
Fishing Creek				42,200	42,200
Gaston Shoals				8,000	8,000
Great Falls				24,800	24,800
Greenwood	34,000				34,000
Holiday's Bridge				805	805
Jocassee				610,000	610,000
Keowee				140,000	140,000
Lee	376,000	90,000			466,000
Ninety Nine Islands				19,700	19,700
Oconee I, II, III			2,598,000		2,598,000
Rocky Creek				27,000	27,000
Saluda				550	550
Tiger	28,600				28,600
Urquhart		40,000			40,000
Wateree				71,500	71,500
Wylie				55,000	55,000
Total Duke Power Company	454,700	326,000	2,598,000	1,088,075	4,466,775
Lockhart Power Company					
Lockhart	5,000			12,300	17,300
South Carolina Electric & Gas Co.*					
Beaufort		33,000			33,000
Canadys	473,000	16,000			489,000
Charleston		11,000			11,000
Coit		40,000			40,000
Columbia Canal				10,600	10,600
Dreher Shoals-Lake Murray				216,000	216,000
Hagood	94,000				94,000
Hardeeville		16,000			16,000
McMeekin	258,000				258,000
Neal Shoals				4,500	4,500
Parr Shoals	70,000	70,000		14,880	154,880
Stevens Creek				18,880	18,880
Urquhart	260,000	26,000			286,000
Wateree	776,000				776,000
Williams	611,000	60,000			671,000
Total South Carolina Electric & Gas Company	2,536,000	232,000		264,860	3,032,860
Total Privately-Owned Utilities	3,199,235	1,254,320	3,366,681	1,365,235	9,185,571
PUBLICLY-OWNED					
Abbeville					
		1,000		2,800	3,800
S. C. Public Service Authority					
Georgetown	280,000				280,000
Hilton Head		20,000			20,000
Jefferies	413,000			123,000	540,000
Myrtle Beach		62,000			62,000
Wilson Landing				1,920	1,920
Total	692,000	82,000		129,920	903,920
Central Electric Power Cooperative					
Granger	170,000				170,000

INSTALLED GENERATING CAPACITY IN SOUTH CAROLINA—June 30, 1976—Continued

	INSTALLED CAPACITY-KILOWATTS				Total
	Fossil Steam	Internal Combustion Turbine	Nuclear Steam	Hydro	
Hilton Head		20,000			20,000
Total	170,000	20,000			190,000
Total Publicly-Owned	862,000	103,000		132,720	1,097,720
TOTALS	4,061,835	1,357,320	3,306,681	1,497,955	10,283,291

NOTES:

* S. G. E. & G. Co. has a 6,000 KW portable gas-turbine driven generator available anywhere on system.

Half of Clark Hill capacity of 280,000 KW (hydro) and half of Hartwell capacity of 264,000 KW (hydro) is allocated to preference customers in South Carolina.

RESIDENTIAL ELECTRIC SERVICE PRIVATELY- OWNED ELECTRIC UTILITIES OPERATING IN SOUTH CAROLINA 1976

Company	Kilowatt Hours	No. of Customers	Revenue	Avg. Rate Cents Per KW-Hr.	KW-Hr. Per Customer	Average Annual Bill
Carolina Pwr. & Light Co.	1,119,047,400	94,656	\$ 37,988,225	3.395	11,822	\$401.33
Clinton Mills	4,250,698	620	159,880	3.762	6,856	257.87
Duke Power Company	2,973,011,973	258,538	95,627,346	3.217	11,499	369.88
Heath Springs Lt. & Pwr. Co.	6,450,976	693	192,369	2.982	9,309	277.59
Lockhart Power Company	36,879,361	4,019	1,088,264	2.951	9,176	270.78
S. C. Electric & Gas Co.	3,059,015,193	270,235	111,059,716	3.631	11,320	410.98
Total	7,198,655,601	628,761	\$246,115,800	3.419	11,449	\$391.43

SALE OF ELECTRIC POWER IN SOUTH CAROLINA BY PRIVATELY-OWNED ELECTRIC UTILITIES IN 1976

Class of Service	Kilowatt Hours Sold	No. of Customers	Revenue
Residential	7,198,655,601	628,761	\$246,115,800
Commercial and Small Power	4,937,771,965	142,520	146,362,609
Municipal and Street Lighting	432,178,580	3,352	11,815,829
Industrial	13,179,074,051	2,738	254,352,062
Municipal for Resale	1,770,617,745	32	33,690,860
REA Cooperatives	832,587,876	11	15,698,760
Total to Ultimate Consumers	28,350,885,818	777,414	\$708,035,921
Other Electric Companies	695,113,237	6	14,108,857
Total Electric Sales	29,009,999,030	777,420	\$722,144,781
Other Electric Revenue			3,981,498
TOTAL	29,009,999,030	777,420	\$726,126,279

DOMESTIC SERVICE STATISTICAL COMPARISON OF MAJOR ELECTRIC UTILITY COMPANIES OPERATING IN SOUTH CAROLINA

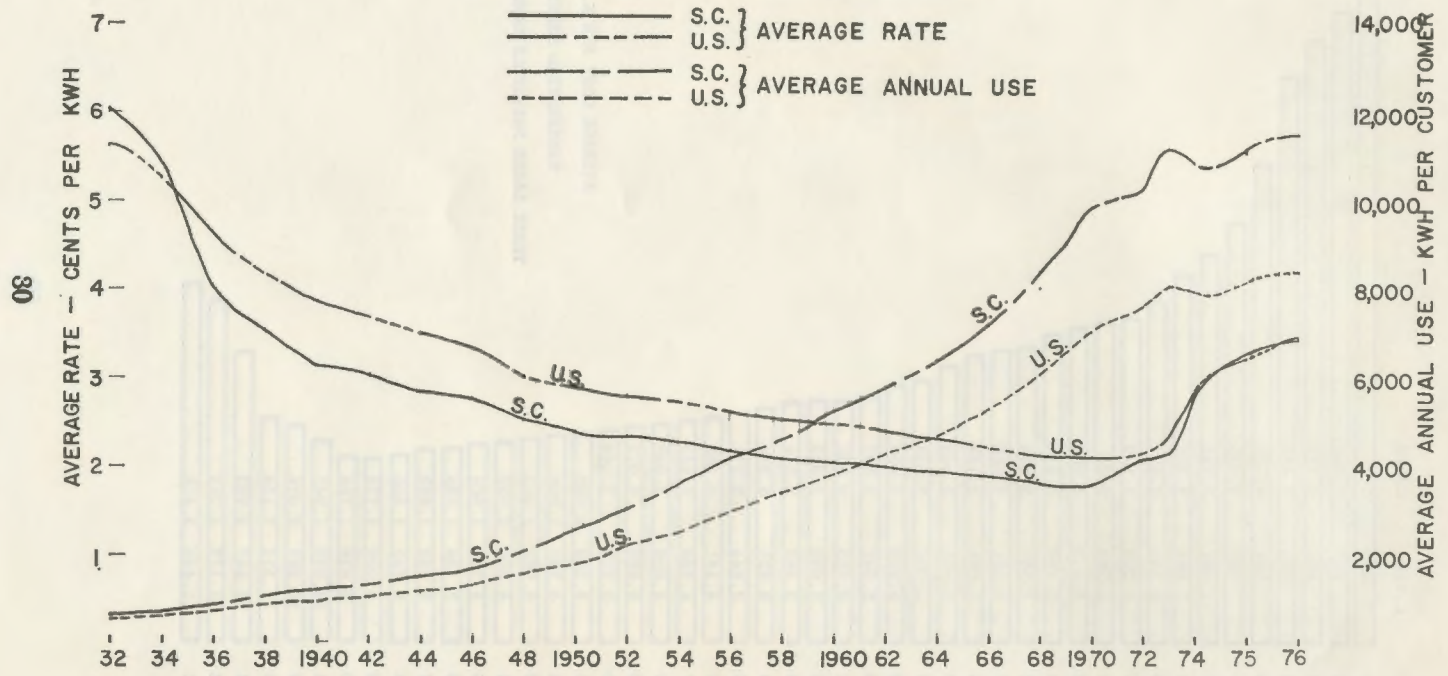
Company — Year	Kw.-Hr.	Revenue	Customers	Average Rate Cents Per Kw.-Hr.	Average Annual Use—Kw.-Hr. Per Customer	Average Annual Revenue Per Customer
Carolina Power & Light Co.						
1932	7,503,977	\$ 458,117.80	10,204	6.105	735	\$ 44.90
1935	10,939,600	494,500.60	11,731	4.520	933	43.15
1940	26,657,500	753,002.18	18,198	2.843	1,465	41.66
1945	45,237,700	1,329,294.05	28,763	2.756	1,677	46.22
1950	129,559,100	2,955,714.87	49,809	2.344	2,541	59.34
1955	234,196,700	4,903,122.93	68,850	2.004	3,726	78.01
1960	350,927,000	6,790,603.09	69,435	1.935	5,054	97.80
1965	486,304,700	8,597,603.38	73,664	1.768	6,602	116.71
1970	840,720,400	13,642,890.57	82,366	1.623	10,207	165.64
1971	883,171,700	15,912,029.84	84,223	1.798	10,509	183.92
1972	915,621,200	17,631,414.17	86,745	1.947	10,555	205.56
1973	1,037,779,354	20,402,309.00	89,266	1.965	11,025	223.56
1974	1,023,836,334	25,927,980.00	91,687	2.532	11,167	282.79
1975	1,072,963,827	31,416,152.00	92,596	2.928	11,587	333.28
1976	1,118,047,400	37,983,225.00	91,656	3.395	11,522	400.33
Duke Power Company						
1932	13,514,460	756,738.60	22,376	5.599	604	33.82
1935	19,625,277	844,898.07	27,481	4.509	714	32.20
1940	46,718,561	1,479,019.03	41,771	3.166	978	30.96
1945	81,357,603	2,356,200.83	66,674	2.896	1,220	35.34
1950	267,371,888	5,952,778.21	100,973	2.226	2,648	58.95
1955	539,349,847	11,227,917.90	135,157	2.082	3,991	83.07
1960	812,239,146	16,026,582.48	155,543	1.971	5,228	103.04
1965	1,168,315,918	21,478,962.00	175,944	1.837	6,643	122.08
1970	2,022,344,799	34,946,803.00	210,073	1.727	9,632	166.36
1971	2,207,345,950	42,610,368.00	219,865	1.930	10,040	193.80
1972	2,353,417,524	46,595,143.00	231,812	1.981	10,148	201.00
1973	2,623,582,954	54,466,533.00	238,933	2.075	10,982	227.96
1974	2,690,828,697	69,800,173.00	248,335	2.594	10,835	281.07
1975	2,824,847,000	84,049,250.00	251,187	2.975	11,246	334.61
1976	2,973,011,973	95,627,346.00	255,638	3.117	11,499	369.83
B. C. Electric & Gas Co.						
1932	6,458,056	405,256.12	11,321	6.275	570	35.80
1935	9,198,808	447,109.20	12,624	4.862	729	35.42
1940	20,296,936	729,725.95	19,007	3.895	1,068	38.59
1945	34,698,993	1,049,036.75	25,481	3.023	1,362	41.17
1950	233,937,234	6,200,949.96	97,699	2.695	2,446	63.47
1955	519,258,250	12,457,586.00	138,357	2.399	3,754	90.05
1960	850,217,188	18,394,089.73	161,482	2.164	5,265	113.91
1965	1,281,895,086	25,858,455.05	188,343	2.017	6,806	137.29
1970	2,250,612,558	42,866,987.00	228,417	1.904	9,853	187.67
1971	2,374,439,931	47,937,478.00	238,828	2.018	9,942	200.72
1972	2,460,673,482	54,500,773.00	238,345	2.215	10,324	288.66
1973	2,797,439,551	64,155,109.00	247,753	2.293	11,291	258.95
1974	2,765,982,211	84,643,036.00	257,417	3.060	10,754	328.82
1975	2,893,005,110	106,338,964.00	263,711	3.676	10,970	403.24
1976	3,057,045,173	111,059,716.00	270,235	3.631	11,320	410.20
South Carolina Power Co.*						
1933	9,620,311	621,449.33	14,741	6.460	653	42.16
1935	14,974,732	678,156.78	16,483	4.529	909	41.15
1940	38,604,381	1,163,738.56	25,007	3.015	1,544	46.54
1945	80,091,322	2,117,962.35	36,658	2.640	2,185	57.78

*NOTE: South Carolina Power Co. was absorbed by South Carolina Electric & Gas Company as of March 31, 1960.

YEAR	K. W. H.	CENTS
1931	600	6.7
32	632	6.042
33	634	5.778
34	695	5.415
35	801	4.576
36	899	4.035
37	1,011	3.731
38	1,081	3.536
39	1,145	3.27
1940	1,203	3.123
41	1,260	3.07
42	1,312	3.025
43	1,450	2.957
44	1,509	2.846
45	1,551	2.804
46	1,691	2.753
47	1,844	2.654
48	2,094	2.524
49	2,319	2.458
1950	2,547	2.387
51	2,755	2.321
52	3,002	2.343
53	3,262	2.310
54	3,571	2.254
55	3,844	2.211
56	4,181	2.165
57	4,300	2.141
58	4,696	2.097
59	4,899	2.077
1960	5,212	2.046
61	5,504	2.022
62	5,766	1.999
63	6,063	1.964
64	6,399	1.932
65	6,706	1.904
66	7,158	1.868
67	7,462	1.852
68	8,391	1.800
69	9,020	1.775
1970	9,819	1.788
71	10,070	1.947
72	10,287	2.076
73	11,214	2.154
74	10,847	2.783
75	11,178	3.266
76	11,449	3.419

AVERAGE COST PER K.W.H.
 RESIDENTIAL SERVICE
 THREE LARGE PRIVATELY OWNED UTILITIES

DOMESTIC ELECTRIC SERVICE U.S. AVERAGE VS S.C. AVERAGE



**SOUTH CAROLINA PUBLIC SERVICE COMMISSION ELECTRIC DEPT.
RESIDENTIAL ELECTRIC BILL COMPARISON PRIVATELY OWNED POWER COMPANIES AS
OF JUNE 30, 1977**

KW. Hrs. Per Month	Carolina Power & Light Co.			Clinton Mills	Duke Power Company			Heath Springs Light & Power Co.		S. C. Electric & Gas Co.		Lockhart Power Co.	
	R-2W*** 10-1-76	R-3W 10-1-76	R-4U 10-1-76	Res. 3-8-76	RA* 3-1-76	RW 3-1-76	R 3-1-76	Res. 10-6-60	R-L-WH 10-6-60	8 12-13-76	8** 12-13-76	RA* 1-10-75	R 1-10-75
Minimum	\$ 5.00	\$ 4.55	\$ 4.40	\$ 4.33	\$ 4.80	\$ 4.60	\$ 4.27	\$ 1.00	\$ 1.00	\$ 3.87	\$ 3.87	\$ 3.00	\$ 3.00
100	8.25	7.80	7.65	5.33	5.77	5.57	5.24	5.57	4.97	8.42	8.42	4.89	4.89
250	13.12	12.67	12.52	10.58	10.55	9.95	10.42	10.87	10.33	14.74	14.74	9.36	10.87
500	20.32	19.87	20.57	19.04	17.79	17.34	19.75	19.66	16.53	23.65	23.65	15.83	15.83
750	26.89	26.44	28.57	27.43	25.47	25.27	29.67	28.46	22.52	32.55	32.55	21.79	21.79
1,000	34.00	33.75	36.17	35.82	33.13	33.18	39.59	37.25	28.50	41.46	41.46	27.75	27.75
1,500	48.50	48.75	51.16	51.86	47.54	48.55	58.75	54.84	40.46	61.65	56.25	38.93	39.18
2,000	58.79	63.74	66.16	64.85	58.78	63.19	75.87	72.43	52.43	82.16	70.63	48.60	50.60
3,000	79.33	93.73	96.15	90.82	81.26	92.47	106.40	107.61	76.36	123.19	99.39	67.95	73.45
4,000	99.97	123.72	126.14	116.79	103.75	121.76	131.97	142.79	100.29	164.22	123.15	87.30	96.30
5,000	120.56	153.71	156.13	142.76	126.24	151.05	161.25	177.97	124.22	205.25	156.91	106.65	119.15

NOTE: Purchase Power or Fuel Adjustments included where applicable.

* All Electric Customer.

** All Electric Service for Months of October through June, otherwise use Rate 8.

*** November through June billing.

**ELECTRIC GENERATION ACCOUNT OF
PRIVATELY-OWNED ELECTRIC UTILITIES
OPERATING IN SOUTH CAROLINA 1976**

	Kilowatt Hours
Steam Generation	12,355,532,000
Hydro Generation	1,850,389,400
Gas Turbine Generation	113,334,000
Nuclear Generation	17,849,702,000
Total	32,168,957,400
Purchased	1,916,018,857
Total Generation and Purchased	34,084,976,257

**SALES TO MUNICIPALITIES FOR RESALE
1976**

Municipality	Company	Kilowatt Hours	Revenue	Avg. Rate Cents Per Kw. Hr.
Abbeville	Duke Power Company	21,429,613	\$ 408,103	1.91
Bennettsville	Carolina Power & Light Co.	62,897,000	1,348,010	2.14
Camden	Carolina Power & Light Co.	106,964,000	2,329,559	2.18
Clemson	Duke Power Company	67,404,960	1,235,782	1.83
Clinton	Duke Power Company	71,418,240	1,330,905	1.86
Due West	Duke Power Company	7,117,200	149,198	2.10
Easley	Duke Power Company	114,733,096	2,101,914	1.83
Gaffney	Duke Power Company	101,277,527	1,842,384	1.82
Greenwood	Duke Power Company	127,893,337	2,424,165	1.90
Greer	Duke Power Company	91,135,298	1,686,945	1.85
Laurens	Duke Power Company	49,778,077	934,571	1.88
McCormick	S. C. Electric & Gas Co.	12,401,600	251,707	2.03
Newberry	Duke Power Company	76,843,800	1,421,979	1.85
Orangeburg	S. C. Electric & Gas Co.	381,456,000	7,436,964	1.95
Prosperity	Duke Power Company	4,745,925	105,037	2.21
Rock Hill	Duke Power Company	262,016,666	4,771,545	1.82
Seneca	Duke Power Company	69,811,200	1,294,442	1.85
Union	Lockhart Power Company	83,525,900	1,466,965	1.76
Westminster	Duke Power Company	20,439,840	390,241	1.91
Winnsboro	S. C. Electric & Gas Co.	37,320,000	759,884	2.04
TOTAL		1,770,609,279	\$33,690,300	1.90

**Organizations Furnishing Retail Electric Service in
Urban and Rural Areas of South Carolina as of
June 30, 1977 Privately Owned Utilities**

Privately Owned Electric Companies	Managing Officer	Address
Carolina Power & Light Co.	Sherwood Smith, Pres.	Raleigh, N. C.
Clinton Mills	R. M. Vance, Pres.	Clinton, S. C.
Duke Power Co.	B. B. Parker, Pres.	Charlotte, N. C.
Heath Springs Light & Power Co.	W. H. Bridges, Pres.	Heath Springs, S. C.
Lockhart Power Co.	L. S. Anderson, Mgr.	Lockhart, S. C.
S. C. Elec. & Gas Co.	Virgil Summer, Pres.	Columbia, S. C.

Rural Electric Cooperatives

Publicly Owned (Federally Financed) Electric System	Managing Officer	Address
Aiken Co. Elec. Co-op., Inc.	Hammie L. Chaplin, Mgr.	Aiken, S. C.
Berkeley Elec. Co-op., Inc.	Robert L. Wingard, Mgr.	Moncks Corner, S. C.
Black River Elec. Co-op., Inc.	Jack Anderson, Mgr.	Sumter, S. C.
Blue Ridge Elec. Co-op., Inc.	A. J. Hurt, Mgr.	Pickens, S. C.
Broad River Elec. Co-op., Inc.	Robert C. Carroll, Mgr.	Gaffney, S. C.
Coastal Elec. Co-op., Inc.	Larry Bruce, Mgr.	Waterboro, S. C.
Edisto Elec. Co-op., Inc.	Robert A. Smith, Mgr.	Bamberg, S. C.
Fairfield Elec. Co-op., Inc.	E. L. Ayers, Mgr.	Winnboro, S. C.
Horry Elec. Co-op., Inc.	H. O. Stogner, Mgr.	Conway, S. C.
Laurens Elec. Co-op., Inc.	David Wasson, Mgr.	Laurens, S. C.
Little River Elec. Co-op., Inc.	J. L. White, Mgr.	Abbeville, S. C.
Lynchess River Elec. Co-op., Inc.	Herbert Leaird, Mgr.	Pageland, S. C.
Marlboro Elec. Co-op., Inc.	Robert B. Awbrey, Mgr.	Bennettsville, S. C.
Mid-Carolina Elec. Co-op., Inc.	Jack F. Wolfe, Jr., Mgr.	Lexington, S. C.
Newberry Elec. Co-op., Inc.	M. Larry Longshore, Mgr.	Newberry, S. C.
Palmetto Elec. Co-op., Inc.	R. Bruce Moysey, Mgr.	Ridgeland, S. C.
Pee Dee Elec. Co-op., Inc.	Robert W. Williams, Jr.	Darlington, S. C.
Santee Elec. Co-op., Inc.	James E. Player, Mgr.	Kingstree, S. C.
S. C. Public Service Authority ..	William C. Mescher, Mgr.	Moncks Corner, S. C.
Saluda River Elec. Co-op., Inc. ..	Henry M. Faris, Mgr.	Laurens, S. C.
Tri-County Elec. Co-op., Inc.	Howard Wilson, Mgr.	St. Matthews, S. C.
York County Elec. Co-op., Inc. ..	R. O. Williams, Mgr.	York, S. C.

Municipalities

Municipally Owned Utilities	Department	Managing Officer
Abbeville	Water and Electric Plant	Derrill Driggers, Supt.
Bamberg	Public Works	James B. Roberts, Dir.
Bennettsville	Electric and Water Plant	Harold Pettit, Supt.
Camden	Dept. of Utilities	A. L. Young, Supt.
Clinton	Light and Water Plant	Homer L. Martin, Supt.
Due West	Electric Light Department	O. H. Hawthorne, Supt.
Easley	City Light and Water Plant	Richard S. Hale, Supt.
Gaffney	Board of Public Works	H. F. Orater, Supt.
Georgetown	Board of Public Works	W. L. Hewitt, Util. Mgr.
Greenwood	Commissioners of Public Works ..	O. E. Grubb, Mgr.
Greer	Commission of Public Works	Kenneth Smith, Mgr.
Laurens	Commission of Public Works	Sam R. Wallace, Mgr.
McCormick	Commission of Public Works	Harold Browne, Supt.
Newberry	Robert Shealy, Supt.
Orangeburg	Water and Light Plant	Alan M. Johnstone, Supt.
Prosperity	Commission of Public Works	Arthur Podmore
Rock Hill	Max Holland, City Mgr.
Seneca	Light and Water Plant	Jerry Balding, Supt.
Union	Commission of Public Works	T. D. Sherbert, Jr., Dir.
Westminster	Commission of Public Works	Sam Stribling, Supt.
Winnboro	Light and Water Dept.	John C. Shirley, Supt.

Power Companies Operating in South Carolina, June 30, 1977

Power Company	Territory Served	Managing Officer	Address
Carolina Power and Light Company	Andrews, Ashland, Auburn, Aynor, Bethea, Bethune, Bishopville, Blaney, Blenheim, Britton, Brogdon, Cades, Cartersville, Cheraw, Chesterfield, Clio, Coward, Darlington, Dillon, Dovesville, Drake, Ebenezer, Effingham, Elliott, Florence, Gallivants Ferry, Greeleyville, Green Sea, Hagood, Hamer, Hartsville, Heine-man, Hemingway, Horatio, Jefferson, Johnsonville, Kingstree, Lake City, Lakeview, Lamar, Lane, Latta, Little Rock, Lugoff, Lynchburg, Lydia, Man-ning, Manville, Marion, Mars Bluff, Mayesville, McBee, McColl, Motbridge, Mt. Croghan, Mullins, Nesmith, New Zion, Nichols, North Mullins, Oates, Olanta, Oswego, Pageland, Pamplico, Patrick, Paxville, Pinewood, Rembert, Ruby, Salters Depot, Sardinia, Scrant-on, Sellers, Shannontown, Shaw AFB, Society Hill, South Lynchburg, South Marion, Stateburg, Stokes Bridge, St. Paul, Summerton, Sumter, Tatum, Timmonsville, Turbeville, Wallace, Wedgefeld, West Marion, Williams-burg, Winona, Zion, Willis, S. C.	Sherwood Smith, President	Raleigh, N. C.
Clinton Mills	Clinton and Lydia Mill Villages	R. M. Vance, Pres. & Treas.	Clinton, S. C.
Duke Power Company	Anderson, Antreville, Arcadia, Arling-ton, Arkwright, Barksdale, Blacksburg, Blair Mills, Boiling Springs, Bon Avon, Brandon, Broadway, Calhoun, Camp Sevier, Campobello, Crampton, Cashville, Catawba, Cedar Springs, Centerville, Central, Cherokee Springs, Chesnee, Chester, Chick Springs, City		

View, Clevedale, Cleveland, Clifton Mills, Clinton, Clover, Cokesbury, Cold Point, Concord, Conestee, Converse, Cowpens, Crescent, Cross Hill, Deans Station, Delphia, Disputanta, Donalds, Drayton, Duncan, East Gaffney, Edgemoor, Elgin, Enoree, Equinox Mills, Eureka Mills, Evansville, Fairforest, Fairmount, Filbert, Fingerville, Flat Rock, Flat Woods, Fork Shoals, Fort Lawn, Fort Mill, Fountain Inn, Gaffney, Glendale, Glenn Springs, Gluck Mill, Gowansville, Gramling, Grassy Pond, Gray Court, Gray's Gin, Great Falls, Greenville, Greer, Harris, Haynes, Hickory Grove, Hickory Tavern, Hillcrest, Hodges, Holly Springs, Honea Path, Inman, Iva, King's Creek, La France, Lancaster, Lando, Landrum, Langford Station, Laurens, Leslie, Lewis Turnout, Level Land, Liberty, Lone Oak, Lowrys, Lyman, Madden, Marietta, Mascot, Maud, Mauldin, Mayo, McConnellsville, Midway, Monaghan, Moore, Mountville, Mountain Creek, Mt. Gallagher, New Prospect, Newry, Ninety-Six, Norris, Ora, Orrville, Owings, Pacolet, Pauline, Pelham, Pelzer, Pendleton, Pickens, Piedmont, Popular Springs, Princeton, Reidsville, Renfrew, Richburg, Rodman, Roebuck, Salem Church, Sandy Springs, Saxon, Seditalia, Sharon, Sigabee, Simpsonville, Six Mile, Smyrna, Spartanburg, Syringdale, Starr, Switzer, Taylors, Tigerville, Tizah, Townville, Travelers Rest, Trough Shoals, Tucapan, Una, Valley Falls, Verdery, Walhalla, Ware Shoals, Waterloo, Watts Mill, Wellford, West Greenville, West Pelzer, West Union, White Stone, Whitmire, Whitney, Woodruff, York.

B. B. Parker, President

Charlotte, N. C.

Power Companies Operating in South Carolina, June 30, 1977—Continued

Power Company	Territory Served	Managing Officer	Address
Heath Springs Light & Power Company ..	Heath Springs, Pleasant Hill, S. C.	W. H. Bridges, President	Heath Springs, S. C.
Lockhart Power Company	Adamsburg, Cross Anchor, Cross Keys, Jonesville, Lockhart, Monarch, Paolet Mills, Sedalia, S. C.	L. S. Anderson, Mgr.	Lockhart, S. C.
South Carolina Electric & Gas Co.	Arden, Ballentine, Batesburg, Blythewood, Bowman, Cameron, Carlisle, Cayce, Chapin, Chappells, College Place, Co- lumbia, Cordova, Creston, Edgewold, Edgewood, Ellores, Forest Acres, Fort Motte, Gadsden, Gaston, Dentsville, Eastover, Eau Claire, Gilbert, Hopkins, Hyatts, Irmo, Jenkinsville, Johnston, Leesville, Lexington, Little Mountain, Livingston, Lykesland, Monetta, Neeses, North, Norway, Parler, Parr, Peak, Pelion, Perry, Pomaria, Pontiac, Red Bank, Ridge Springs, Ridgeway, Ridge- wood, Rion, Rockton, Rowesville, Roy- ster, Salley, Saluda, Santuc, Seivern, Shelton, St. Matthews, Summit, Swan- sea, Trenton, Wagener, Ward, West Co- lumbia, White Rock, Woolford, S. C.	Virgil Summer, President	Columbia, S. C.
South Carolina Electric and Gas Company Successor to South Carolina Power Company	Adams Run, Aiken, Allendale, Ashley Junction, Ashley Phosphate, Awenday, Bamberg, Barnwell, Bath, Beech Island, Beaufort, Belvedere, Berry Hill, Black- ville, Bluffton, Bordeaux, Boyer, Branch- ville, Brunson, Burnettetown, Burton, Calhoun Falls, Canadys, Charleston, Cherokee, Chicora, Clark's Hill, Clearwater, Connors, Cooper Yard, Coosawatchie, Cope, Cottageville, Crocketville, Dale, Denmark, Dor- chester, Drayton Hall, Dunbarton, Dupont, Early Branch, Edgefield,		

South Carolina Electric and Gas Company
 Successor to South Carolina Power
 Company

Edisto Island, Ehrhardt, Elko, Ellenton,
 Estill, Eutawville, Fairfax, Furman,
 Garnett, Gloverville, Goodrich, Govan,
 Grahamville, Graniteville, Green Pond,
 Hampton, Hanahan, Hardeeville, Harley-
 ville, Hendersonville, Holly Hill, Horse
 Pond, Isle of Palms, James' Island,
 Jedburg, John's Island, Johnstown,
 Kline, Langley, Lincolnville, Lodge,
 Luray, Madison, Magnolia, Maryville,
 McClellanville, Meggetts, Myers, Mid-
 land Park, Miley, Modoc, Montmorenci,
 Mt. Carmel, Mt. Pleasant, North Au-
 gusta, North Charleston, Olar, Parks-
 ville, Plum Branch, Pocotaligo, Port
 Royal, Pritchardville, Ravenel, Reeves-
 ville, Rossville, Ridgeland, Ridgeville,
 Round, Ruffin, Scotta, Seiglinville,
 Sheldon, Six Mile, Smoaks, Snellings,
 Springfield, St. Andrew's Parish, St.
 George, Sullivan's Island, Summerville,
 Switzerland, Sycamore, Ten Mile, Tilma,
 Troy, Ulmers, Vance, Varnville, Van-
 cluse, Walterboro, Warrentonville, White
 Pond, Williams, Willington, Williston,
 Windsor, Yemassee, Yonges Island, S. C.

Virgil Summer, President

Columbia, S. C.

South Carolina Public Service Authority
 (Santee Cooper)

Atlantic Beach, Burgess, Conway, Cherry
 Grove Beach, Crescent Beach, Floral
 Beach, Ingram Beach, Loris, Little
 River, Moncks Corner, Myrtle Beach,
 Murrell's Inlet, Ocean Drive Beach,
 Socastee, Wampee, St. Stephen, S. C.

William C. Mescher, President

Moncks Corner, S. C.

GAS DEPARTMENT

There are five private corporation natural gas utilities serving customers in South Carolina. The rates and services of these utilities are subject to jurisdiction of the Public Service Commission. The natural gas utilities and the communities they serve are listed in the tables included in this report.

Natural gas brought into South Carolina is produced principally in the gas fields of Louisiana and Texas, including the offshore areas in the Gulf of Mexico. The gas is transported to South Carolina by two interstate pipeline companies: Transcontinental Gas Pipe Line Company and Southern Natural Gas Company. Transcontinental's pipeline crosses the State in the northwest corner passing just south of Anderson and Spartanburg, South Carolina, while Southern's pipeline terminates at a point near Aiken, South Carolina. All natural gas consumed in South Carolina is furnished by these two interstate pipelines which furnish gas to natural gas authorities and municipally owned gas utilities as well as the privately owned utilities.

The Federal Power Commission has jurisdiction over rates and services of interstate pipeline companies and the price of natural gas sold by producers to interstate pipelines. These price fluctuations have a direct bearing on the cost of natural gas to the ultimate consumer in South Carolina. During the past year, the Public Service Commission has participated in several proceedings before the Federal Power Commission to protect the interests of the people and the gas utilities in South Carolina.

The Commission received a number of complaints regarding services and charges from customers of the gas utilities. Each inquiry was investigated and handled informally without necessity of a special hearing.

Many communities in South Carolina are receiving natural gas service through facilities owned by municipalities or gas authorities over which the Commission has no rate or service jurisdiction. However, the South Carolina Gas Safety Act of 1970 vested the Commission with pipeline safety jurisdiction over all gas system operators not subject to Federal Power Commission jurisdiction. Therefore, pipeline safety jurisdiction includes public utilities, municipalities, natural gas authorities, certain public housing authorities and others who purchase natural gas through a master meter for subsequent distribution to individual consumers. As of June 30, 1977, there were 41 such operators.

During calendar year 1976, representatives of the Commission made 382 inspections of natural gas systems to insure compliance with the South Carolina Gas Safety Act and the Minimum Federal Safety Standards for Natural Gas Pipelines. Eighty-seven violations were found during these visits and as of December 31, 1976, the Commission Staff verified compliance covering seventy-two of these violations. The remaining violations necessitate continued monitoring to substantiate that they are corrected and brought into compliance with the Pipeline Safety Standards.

As indicated by the accompanying tables, the demand for natural gas in South Carolina has resulted in sales growth in recent years, but due to the present dwindling supplies, this growth is being adversely affected. Its characteristics as an efficient and pollution-free fuel have created a nationwide demand of such proportions that our existing domestic supply cannot meet the needs. Most gas utilities have been forced to curtail expansion of their residential, industrial, and commercial "firm gas" market. Some limitations have also been placed on segments of the industrial "interruptible gas" market. During the fiscal year covered in this report, the Commission held extensive hearings and conferences concerning the increasing curtailments of natural gas to our utilities.

All five private gas utilities are operating under the provisions of curtailment plans designated to allocate gas on the basis of priority of service established by such factors as efficiency of use, safety considerations, consumer reliance, and alternate fuel availability.

The dwindling supplies have forced the utilities to construct additional liquefied petroleum gas and liquefied natural gas peaking facilities to meet customer demands.

Agencies of the Federal Government and State Commission have taken actions designed to increase exploration for new gas reserves within the continental United States and offshore areas. In our State, two companies have been granted Commission approval to engage in exploration activities designed to increase the supply of gas to the company's system.

Two factors showing the pace of activity by natural gas utilities are the average number of customers and the gross plant investment. The growth in total customers served by each privately owned gas utility is shown by one of the accompanying tables. The total of natural gas customers grew from 202,671 in 1972 to 224,533 in 1976 for an increase of 11% over the five years.

Three hearings for increases in rates were held during the fiscal year covered in this report. Rates were also adjusted in accordance with approved purchased gas adjustment and curtailment tracking adjustment clauses in the tariffs. These fluctuations resulted from changes in rates of interstate pipeline companies and curtailments of gas supplies. Some of these rate changes were retroactive decreases which resulted in refunds being passed to the customer through billing credits.

GAS OPERATIONS IN SOUTH CAROLINA, JUNE 30, 1977

Name of Utility	Localities Served	Managing Officer	Address
PRIVATELY OWNED PUBLIC UTILITIES			
Jurisdiction—Rates & Service —Pipeline Safety			
Carolina Pipeline Co., Transmission	Gas transmission lines from near Blacksburg to the Pee Dee section of South Carolina. Gas transmission lines serve Abbeville County and from Transcontinentals pipeline to Carlisle and tie lines from Aiken to Chappells, Carlisle to Chappells and Carlisle to Moore and Woodruff.		
Distribution	Abbeville, Bethune, Bishopville, Calhoun Falls, Camden, Conway, Cheraw, Dillon, Due West, Elgin, Jefferson, Johnsonville, Kingstree, Lake City, Lowndesville, Lugoff, Marion, Mayfield, McBee, Mullins, Myrtle Beach, Pageland, Pamplico, Pontiac, Society Hill, Zion	John A. Warren, Pres.	Columbia, S. C.
Peoples Natural Gas Co. of S. C. Distribution	Darlington, Florence, Hartsville, Sumter	Marion D. Lucas, Pres.	Florence, S. C.
Piedmont Natural Gas Co., Inc. Transmission	Gas transmission lines from connection with Transcontinental Gas Pipeline Company to city gates of Anderson, Greenville, and Spartanburg, South Carolina.		
Distribution	Anderson, Belton, Greenville, Honea Path, Inman, Iva, Mauldin, Simpsonville, Spartanburg, Starr, Travelers Rest, Woodruff	J. David Pickard, Pres.	Charlotte, N. C.

GAS OPERATIONS IN SOUTH CAROLINA, JUNE 30, 1977—Continued

Name of Utility	Localities	Managing Officer	Address
South Carolina Electric & Gas Transmission	Gas transmission lines from near Aiken, to city gates of Charleston, Columbia, and from near Montmorenci to Allendale, Barnwell, Hampton, and Beaufort Counties.		
Distribution	Aiken, Allendale, Andrews, Barnwell, Batesburg, Bath, Beach Island, Beaufort, Blackville, Bowman, Brunson, Burnetttown, Burton, Cayce, Clearwater, Charleston, Columbia, Congaree, Denmark, Dentsville, Edgefield, Elko, Estill, Fairfax, Forest Acres, Gaston, Georgetown, Gloverville, Goose Creek, Graniteville, Hampton, Harleyville, Holly Hill, Irmo, Jackson, James Island, Jedburg, Johnston, Ladson, Langley, Leesville, Lexington, Lincolnville, New Ellenton, North Augusta, North Charleston, Parris Island, Perry, Pine Ridge, Port Royal, Ridgeland, Ridge Spring, Ridgeville, S. Congaree, Salley, Saluda, St. George, Springdale, Steifeltown, Summerville, Swansea, Varnville, Wagner, Walterboro, Warrenville, W. Ashley, W. Columbia, Williston, Yemassee	Virgil C. Summer, President	Columbia, S. C.
United Cities Gas Co., Distribution ...	Gaffney	John H. Maxheim, Pres.	Nashville, Tenn.
GAS AUTHORITIES Jurisdiction—Pipeline Safety			
Chester County Natural Gas Authority ..	Great Falls, Fort Lawn, Lando	R. E. Neal, Manager	Chester, S. C.
Clinton-Newberry Natural Gas Authority	Clinton, Liddi Mill, Joanna, Whitten Village, Jalapa, Newberry, Kinards	Bob Harris, Manager	Clinton, S. C.
Fort Hill Natural Gas Authority	Cateechee, Central, Clemson, Easley, Liberty, Norris, Pelzer, Pendleton, Pickens, Seneca, Walhalla, Westminster, W. Pelzer, W. Union, Westminster	Howard Nixon, Mgr.	Easley, S. C.

Lancaster County Natural Gas Authority	Lancaster, Heath Springs, Kershaw	Troy Elmore, Mgr.	Lancaster, S. C.
York County Natural Gas Authority	Rock Hill and Fort Mill	O. K. Stafford, Mgr.	Rock Hill, S. C.
MUNICIPALITIES			
Jurisdiction—Pipeline Safety			
City of Bennettsville	Bennettsville	J. W. Douglas, Supt. of Gas Dept.	Bennettsville, S. C.
City of Blacksburg	Blacksburg	William Byars, Adm.	Blacksburg, S. C.
City of Orangeburg	Orangeburg and Cordova	Alan Johnstone, Mgr. of Public Works .. Thomas Fairey, Supt. of Gas	Orangeburg, S. C.
City of Winnsboro	Winnsboro	Phillip Burns, City Manager Jesse Wallace, Supt. of Gas	Winnsboro, S. C.
City of Union	Buffalo, Jonesville, Pacolet, Union	Tom Sherbert, Director Utilities	Union, S. C.
City of Bamberg	Cope Community and Bamberg	James Roberts, Supt. of Public Works .. V. L. Beechum, Supt. of Gas	Bamberg, S. C.
City of Greenwood	Greenwood, Donalds, Ninety Six, Ware Shoals	Hugh Edwards, Supt. of Gas	Greenwood, S. C.
City of Greer	Greer, Lyman, Duncan	Kenneth Smith, Mgr. of Public Works .. Richard Gredler, Supt. of Gas	Greer, S. C.
City of Fountain Inn	Fountain Inn	Jack Casey, Supt. of Gas	Fountain Inn, S. C.
City of Laurens	Laurens, Gray Court	Sam Wallace, Mgr. of Public Works .. Gerry Sheppard, Supt. of Gas	Laurens, S. C.
HOUSING AUTHORITIES			
Jurisdiction—Pipeline Safety			
Housing Authority of the City of Abbeville	Donalds, Due West, Lowndesville, Abbeville	J. Stuart Land, Exec. Director	Abbeville, S. C.
Housing Authority of Aiken	Aiken	Ervin E. Koon, Exec. Director	Aiken, S. C.
Housing Authority of Anderson	Anderson	Wm. R. Prater, Exec. Director	Anderson, S. C.
Housing Authority City of Columbia	Columbia	William R. Ballou, Administrator	Columbia, S. C.
Housing Authority of Conway	Conway	Shaulter V. Allen, Executive Director ..	Conway, S. C.
Housing Authority of Fort Mill	Fort Mill	Louise M. Bonetti, Executive Director ..	Fort Mill, S. C.

GAS OPERATIONS IN SOUTH CAROLINA, JUNE 30, 1977—Continued

Name of Utility	Localities	Managing Officer	Address
Housing Authority City of Gaffney	Gaffney	Joe H. Turner, Executive Director	Gaffney, S. O.
Housing Authority, City of Greenville	Greenville	R. G. Chamblee, Executive Director ..	Greenville, S. O.
Housing Authority, City of Lake City	Lake City	R. H. Jennings, Executive Director	Lake City, S. O.
Housing Authority, City of Laurens	Laurens	Ms. Katharine Dixon, Exec. Director ..	Laurens, S. O.
S. O. Regional Housing Authority No. 1	Belton, Blacksburg, Calhoun Falls, Central, Clover, Cowpens, Edgefield, Fort Mill, Fountain Inn, Heath Springs, Honea Path, Iva, Johnston, Jonesville, Laurens, Liberty, Ninety Six, Pacolet, Pendleton, Saluda, Seneca, Walhalla, Westminster, Williamston, York	Fred H. Fridy, Assistant Secretary	Laurens, S. O.
S. O. Regional Housing Authority No. 3	Blackville, Denmark, Fairfax, Salley, Wagener, Williston	John M. Smith, Executive Director	Barnwell, S. O.
Housing Authority of City of Spartanburg	Spartanburg	Frank M. Gooch, Executive Director ..	Spartanburg, S. O.
Housing Authority of Union	Union	Fred A. Cogdell, Executive Director ..	Union, S. O.
Housing Authority of Woodruff	Woodruff	L. G. Casey, Executive Director	Woodruff, S. O.
Housing Authority of York	York	James Poore, Executive Director	Rock Hill, S. O.
MASTER METER SYSTEMS Jurisdiction—Pipeline Safety			
Blease Littlefield Trailer Park	Rock Hill	Blease Littlefield	Rock Hill, S. O.
Bridges Welding Co. and Trailer Park ...	Gaffney	Larry Bridges	Gaffney, S. O.
Carver Apartments	Myrtle Beach	H. W. Ragin, Manager	Myrtle Beach, S. O.
Charles Brothers Trailer Park	Rock Hill	Jim Charles	Rock Hill, S. O.
Cherry Hill Apts.	Conway	Franklin Dewitt, Attorney	Conway, S. O.

NATURAL GAS SERVICE TO RESIDENTIAL CUSTOMERS

Company — Year	Residential Customers	Residential Gas Sales, MCF	Average Use Per Customer, MCF
*Carolina Pipeline Co.			
1976	12,631	1,411,777	111.7
1975	12,905	966,559	74.9
1974	12,047	954,514	79.2
1973	11,361	982,213	86.5
1972	11,026	1,131,233	102.6
Peoples Natural Gas Co. of S. C.			
1976	4,079	273,489	67.0
1975	4,042	227,928	56.4
1974	4,088	221,710	54.9
1973	4,309	242,730	56.3
1972	4,869	232,532	53.2
Piedmont Natural Gas Co., Inc.			
1976	37,621	3,647,015	96.9
1975	38,543	3,221,919	83.6
1974	36,244	3,130,420	86.4
1973	34,855	3,500,582	100.4
1972	33,300	3,430,292	103.0
S. C. Electric & Gas Co.			
1976	147,146	10,972,514	74.6
1975	145,091	8,920,026	61.5
1974	143,152	8,830,791	61.6
1973	137,795	9,932,444	72.1
1972	131,274	9,094,488	69.3
United Cities Gas Co.			
1976	3,335	315,454	93.2
1975	3,333	275,377	82.6
1974	3,373	280,292	83.1
1973	3,137	289,365	92.2
1972	3,142	296,917	94.5

* Figures based on Fiscal Year Ending March 31 of Following Year.

CUSTOMERS SERVED BY NATURAL GAS UTILITIES

Company — Year	Residential	Commercial & Small Industrial	Large Industrial	Sales For Resale	Total Customers
*Carolina Pipeline Co.					
1976	12,631	532	91	9	13,263
1975	12,905	304	118	9	13,336
1974	12,047	370	125	9	12,551
1973	11,361	372	119	9	11,861
1972	11,026	334	116	9	11,485
Peoples Natural Gas Co.					
1976	4,070	1,147	41	0	5,275
1975	4,042	1,144	44	0	5,230
1974	4,088	1,144	40	0	5,222
1973	4,300	1,235	39	0	5,583
1972	4,369	1,291	35	0	5,695
Piedmont Natural Gas Co.					
1976	37,621	5,325	248	0	43,194
1975	35,543	5,442	244	1	44,230
1974	36,244	5,355	240	1	41,840
1973	32,779	5,245	237	1	40,338
1972	33,300	5,336	237	1	39,874
S. C. Electric & Gas Co.					
1976	147,146	12,057	306	2	159,011
1975	145,091	12,060	297	2	157,450
1974	143,152	12,232	298	2	155,684
1973	137,795	11,919	295	2	150,011
1972	131,274	11,500	289	2	143,065
United Cities Gas Company					
1976	3,385	383	22	0	3,790
1975	3,333	401	22	0	3,756
1974	3,373	359	21	0	3,753
1973	3,137	376	15	0	3,523
1972	3,142	355	55	0	3,552

* Figures based on Fiscal Year Ending March 31 of Following Year.

NATURAL GAS UTILITIES ANNUAL SALES

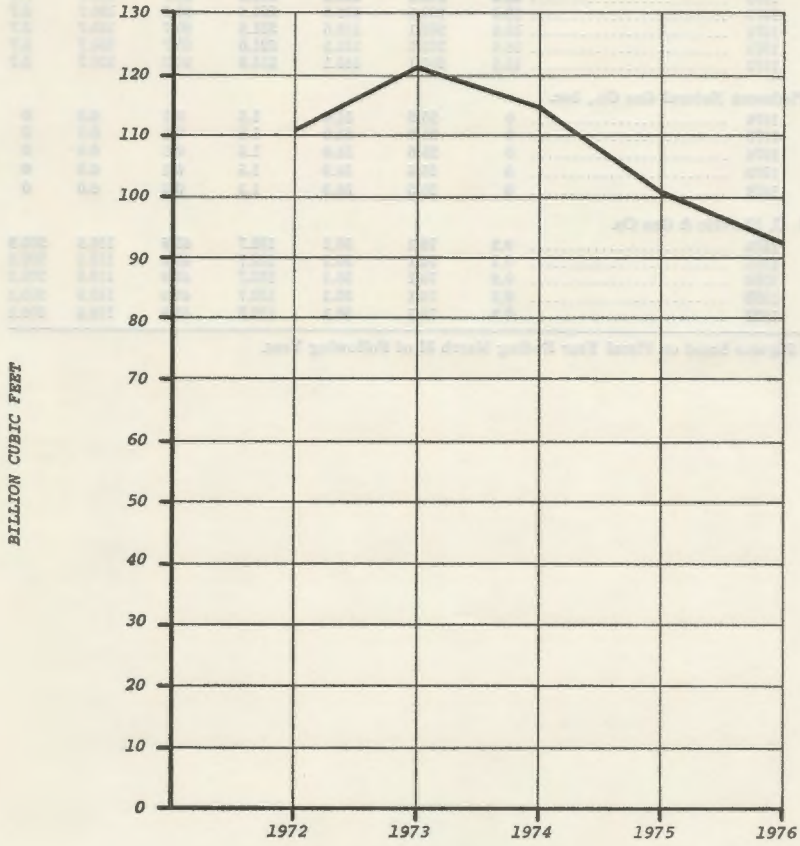
Total Sales in MCF

	1976	1975	1974	1973	1972
*Carolina Pipeline Co.	29,816,617	33,194,645	43,824,428	51,020,341	41,622,597
Peoples Natural Gas Co. of S. C.	2,053,874	2,105,131	2,300,591	1,940,952	1,908,544
Piedmont Natural Gas Co., Inc. ...	11,990,417	13,509,716	19,441,125	22,224,104	23,481,535
S. C. Electric & Gas Co.	47,721,440	45,533,565	47,722,101	44,225,204	42,062,466
United Cities Gas Co.	691,371	1,076,748	1,562,541	1,641,549	1,670,706

* Figures based on Fiscal Year Ending March 31 of Following Year.

MILES OF NATURAL GAS TRANSMISSION PIPELINES
Nominal Pipe Diameter

Year	1972	1973	1974	1975	1976
1972	110	121	115	100	93



JURISDICTIONAL NATURAL GAS SALES
1972 THROUGH 1976

MILES OF NATURAL GAS TRANSMISSION PIPELINES

Nominal Pipe Diameter

Company — Year	2" or Less	2½" Thru 4"	6"	8"	10"	12"	16"
*Carolina Pipeline Company							
1976	18.6	203.1	152.5	321.6	90.7	130.7	5.7
1975	18.6	203.1	152.5	321.6	90.7	130.7	5.7
1974	18.6	203.1	152.5	321.6	90.7	130.7	5.7
1973	18.6	203.1	152.5	321.6	90.7	130.7	5.7
1972	18.6	203.1	145.1	215.9	90.7	130.7	5.7
Piedmont Natural Gas Co., Inc.							
1976	0	25.6	34.0	1.5	0.1	6.0	0
1975	0	25.6	34.0	1.5	0.1	6.0	0
1974	0	25.6	34.0	1.5	0.1	6.0	0
1973	0	25.5	34.0	1.5	0.1	6.0	0
1972	0	25.5	34.0	1.5	0.1	6.0	0
S. O. Electric & Gas Co.							
1976	0.2	76.1	36.1	132.7	43.9	119.8	200.2
1975	0.2	76.1	36.1	132.7	43.9	119.8	200.2
1974	0.2	76.1	36.1	132.7	43.9	119.8	200.2
1973	0.2	76.1	36.1	132.7	43.9	119.8	200.2
1972	0.2	76.1	36.1	132.7	43.9	119.8	200.2

* Figures based on Fiscal Year Ending March 31 of Following Year.



TELEPHONE AND TELEGRAPH DEPARTMENT

The Telephone and Telegraph Department of the Utilities Division is responsible for the work necessary in the regulation of rates and services pertaining to 31 telephone utilities, one telegraph utility, as well as 14 radio common carrier companies. The Staff of this department investigates, and makes every effort to resolve all complaints involving rates and service, territorial disputes and requests for boundary changes.

Field Inspections of telephone plant in use and under construction are made. When construction is completed, tests and other observations are made to determine the quality and adequacy of service. The Staff also maintains an updated file on all tariffs, territorial maps, and other pertinent data. The exhibits and materials submitted with rate applications are thoroughly reviewed before being introduced at a hearing.

During the fiscal year, the Telephone and Telegraph Department processed in excess of 540 complaints. The telephone subscribers of today expect better service without delays, failures, or inaccurate billing. Due to these and other reasons, the Staff of the Telephone Department performed tests in forty-two (42) central offices during the year to determine the condition of the equipment and grade of service being rendered. These tests, performed by Engineers from this department, are made to insure that the Commission's minimum service standards are being met.

During the past year most telephone utilities, continued to make large investments to improve their outside plant, central office, and toll equipment in an endeavor to cope with the ever expanding telephone industry.

The Commission held 10 formal hearings involving telephone, radio common carrier, territory, and merger matters during the year and all interested parties were given an opportunity to be heard. A decision was rendered on all 10 hearings. In addition, approximately 670 tariff filings covering new service or change in language were reviewed by the Staff and approved by the Commission without formal hearings.

We are showing below some of the more notable Telephone Utility accomplishments which occurred during the period of July 1, 1976, through June 30, 1977.

Southern Bell Telephone and Telegraph Company started or completed the following:

Building rearrangements began on the Greenville downtown building to provide space for a No. 1A ESS to replace existing dial equipment in the downtown building.

Construction started on a building to house a 2B ESS which will replace the Step-by-Step equipment in the Mt. Pleasant exchange.

Construction started on a building to house a new No. 2B ESS which will replace the Step-by-Step equipment in the Isle of Palms and Sullivans Island exchanges.

Installation of the Pickens No. 2B ESS began.

Installation of the Mullins No. 2 ESS began.

Installation began on the second addition to the Spartanburg No. 1 ESS which will replace the remaining Step-by-Step equipment in downtown Spartanburg.

Chapin-Little Mountain No. 2 ESS replacing Step-by-Step equipment was placed in service.

The second addition to the Senate Street No. 1 ESS replacing the remaining Step-by-Step equipment in the Columbia downtown office was placed in service.

Extended Area Service established between Chapin and Columbia.

Installation began on the first TSPS operator unit in Greenville, S. C.

Installation began on the downtown Charleston No. 1 ESS which will replace the existing dial equipment in the downtown office.

The second TSPS operator unit was placed in service in Columbia. (Dentsville Office)

Construction started on the York building addition to house a 2B ESS which will replace the Step-by-Step equipment.

Mullins No. 2 ESS replacing Step-by-Step equipment was placed in service.

Pickens No. 2B ESS replacing Step-by-Step equipment was placed in service.

Educational Television during the school year ending June 15, 1977 was as follows:

Public Schools	250
School District Offices	17
Higher Education	23
Technical Education Centers	18
Hospitals	31
Police Departments	16
Miscellaneous	21
TOTAL	376

GROWTH OF TELEPHONE UTILITIES IN SOUTH CAROLINA

Year	Gross Operating Revenue (Millions of Dollars)	Gross Plant Investment (Millions of Dollars)	Total No. of Telephones (Thousands)
1966	83.1	394.4**	850.3
1967	90.5	446.1**	900.7
1968	102.6	500.1**	982.6
1969	117.7	561.8**	1072.0
1970	134.8	634.3**	924.6
1971	194.6	683.3**	1139.3
1972	168.4*	807.1***	1250.6
1973	182.9*	934.4***	1370.8
1974	213.9*	1086.6***	1451.9
1975	340.8	1053.2***	1529.2
1976	399.5	1304.5***	1600.9

* Includes only South Carolina portion of Toll Revenue.

** Includes Plant in Service, held for future use.

*** Includes Plant in Service and under construction.

TELEPHONE UTILITIES OPERATING IN SOUTH CAROLINA, JUNE 30, 1976

Name of Company	Exchanges	Managing Officer/Addressee	Address
Bluffton Telephone & Appliance Co., Inc.	Bluffton, S. C.	John D. Cantrell, V-Pres.	Bluffton, S. C.
Chesnee Telephone Company	Chesnee, S. C.	Mrs. H. W. Askins, Pres.	Chesnee, S. C.
Chester Telephone Company	Chester, Great Falls, Lewisville, S. C.	J. M. McElwee, Pres.	Chester, S. C.
Continental Telephone Co. of S. C.	Bowman, Elloree, Jackson, Santee, Simpsonville, S. C.	C. K. Rice, Pres.	Simpsonville, S. C.
Farmers Telephone Coop, Inc.	Bishopville Rural, Greeleyville, Lane, Lynchburg, Mayesville, N. Kingstree, N. Manning, N. Summerton, N. Sumter, Pinewood, Scranton, Statesburg, Turbeville, W. Andrews, S. C.	Aubrey Judy, Mgr.	Kingstree, S. C.
Fort Mill Telephone Co.	Fort Mill, S. C.	F. S. Barnes, Pres.	Rock Hill, S. C.
General Telephone Co. of the SE	Abbeville, Andrews, Bishopville, Calhoun Falls, Conway, Ehrhardt, Fairfax, Georgetown, Hemingway, Hollywood, Johnsonville, Kingstree, Lake City, Lamar, Laurens, McCormick, Manning, Myrtle Beach, Ocean Drive, Olanta, Olar, Pamplico, Pawleys Island, Shawview Heights, N. Myrtle Beach, Summerton, Sumter, Surfside, Walterboro, Woodruff, Winnsboro, Yemassee, S. C.	C. R. Tarrant, V-Pres. & Gen. Mgr.	Sumter, S. C.
Hargray Telephone Company, Inc.	Hardeville, Hilton Head Island, S. C.	Tony Capici, Mgr.	Hilton Head, S. C.
Heath Springs Telephone Co.	Heath Springs, S. C.	W. H. Bridges, Pres.	Heath Springs, S. C.
Home Telephone Company, Inc.	Moncks Corner, Harleyville, Jamestown, Lebanon, Cross, S. C.	Robert L. Helmly, Pres.	Moncks Corner, S. C.
Horry Telephone Coop., Inc.	Aynor, Horry, Floyds, Loris, Murrells Inlet, Red Hill, Lakewood, S. C.	R. E. Jamison, Mgr.	Conway, S. C.
Inman Telephone Company, Inc.	Inman, S. C.	Jerry Covil, Mgr.	Inman, S. C.
Lancaster Telephone Co.	Lancaster, S. C.	Gene T. Whitlock, Opr. Mgr.	Lancaster, S. C.
Lockhart Telephone Exchange	Lockhart, S. C.	W. F. Tribble, Gen. Mgr.	Lockhart, S. C.
McClellanville Telephone Co., Inc.	McClellanville, S. C.	Gary Torbett, Mgr.	McClellanville, S. C.
Mid-Carolina Telephone Co.	Landrum, Campobello	R. O. Trainor, Mgr.	Tryon, N. C.
Norway Telephone Company, Inc.	Norway, S. C.	J. C. Williams, Mgr.	Norway, S. C.
Palmetto Rural Telephone Coop., Inc.	Colleton, Cottageville, Hendersonville, Lodge, Williams, S. C.	Dan Dandridge, Mgr.	Walterboro, S. C.
Piedmont Rural Telephone Coop., Inc.	Enoree, Gray Court, Hickory Tavern, Laurens Rural, Waterloo, West End, S. C.	J. S. Stoddard, Mgr.	Laurens, S. C.

Name of Company	Exchanges	Managing Officer/Addressee	Address
Pond Branch Telephone Company	Gilbert, Pelion, Pond Branch, Swansea, Wagener, S. O.	N. Everett Kneece, V-Pres. and Mgr.	Gilbert, S. C.
Ridge Telephone Company	Ridge Spring, S. O.	E. P. Boatwright, Mgr.	Ridge Spring, S. C.
Ridgeway Telephone Company, Inc.	Ridgeway, S. C.	B. Y. Palmer, Mgr.	Ridgeway, S. C.
Rock Hill Telephone Company	Rock Hill, S. O.	F. S. Barnes, Pres.	Rock Hill, S. C.
Sandhill Telephone Coop., Inc.	Chesterfield, Jefferson, Pageland, Patrick, Ruby, McBee, Bethune, S. O.	John D. McLaurin, Mgr.	Jefferson, S. C.
South Carolina Telephone Corporation ..	Lexington, Kershaw	LeRoy Darling, Pres.	Lexington, S. C.
Southern Bell Tel & Tel Co.	Aiken, Allendale, Anderson, Bamberg, Barnwell, Bath, Belton, Bennettsville, Blue Ridge, Blacksburg, Blackville, Blenheim, Camden, Central, Chapin, Charleston, Cheraw, Clemson College, Clinton, Olo, Clover, Columbia, Congaee, Cowpens, Darlington, Denmark, Dillon, Easley, Eastover, Edgefield, Edisto Beach, Florence, Folly Beach, Fountain Inn, Gaffney, Graniteville, Greenville, Greer, Hartsville, Hickory Grove, Honea Path, Isle of Palms, Joanna, Johnston, Jonesville, Lake View, Lake Wylie, Latta, Leesville, Liberty, Little Mountain, Lyman, Marion, McColl, Mt. Pleasant, Mullins, Newberry, New Ellenton, Nichols, North Augusta, Orangeburg, Pacolet, Pelzer, Pendleton, Pickens, Piedmont, Prosperity, Seneca, Sharon, Six Mile, Spartanburg, Springfield-Salley, St. George, Society Hill, Sullivan's Island, Summerville, Timmons ville, Travelers Rest, Union, Walhalla, Westminster, Whitmire, Williamston, York, S. O.	H. R. Marsh, V.P. and Gen. Mgr.	Columbia, S. C.
St. Matthews Telephone Co.	St. Matthews, Cameron, Creston, S. C.	R. F. Nickells, Mgr.	St. Matthews, S. C.
St. Stephen Telephone Co.	St. Stephen, Bonneau, S. O.	F. O. Baxter, Mgr.	St. Stephen, S. C.
United Telephone Company of the Carolinas, Inc.	Beaufort, Branchville, Estill, Eutawville, Hampton, Holly Hill, Laurel Bay, Ridgeland, Greenwood, Hodges, Cross Hill, Saluda, Troy, Ware Shoals, Ninety Six, Chappels, Mountville, S. O.	John Kirby, Vice Pres.	Southern Pines, N. C.
West Carolina Rural Telephone Coop. ...	Due West, Iva, Plum Branch, Starr, W. Abbeville, S. O.	L. B. Thompson, Mgr.	Abbeville, S. C.
Williston Telephone Company	Williston, North, S. O.	W. E. Knotts, Mgr.	Williston, S. C.

**RADIO COMMON CARRIERS IN SOUTH CAROLINA
ISSUED CERTIFICATES OF PUBLIC
CONVENIENCE AND NECESSITY**

Able Answering Service
P. O. Box 1409
Sumter, South Carolina 29150

Aiken Mobile Communications, Inc.
639 Rutledge Street
Camden, South Carolina 29020

All Services, Inc.
1255-B Savannah Highway
Charleston, South Carolina

ASTA, Inc.
1302 S. McDuffie Street
Anderson, South Carolina 29621

Camden Mobile Communications, Inc.
1105 Broad Street
Camden, South Carolina 29020

Columbia Telephone Answering Service
1520 Bull Street
Columbia, South Carolina

Communication Technical Sales, Inc.
2021 Rosewood Drive
Columbia, South Carolina

Eagle Aviation
Columbia Metropolitan Airport
West Columbia, South Carolina 29169

Evans Radio Company, Inc.
1515 Bull Street
Columbia, South Carolina

Morris Communications, Inc.
103 Pickens Street
Greenville, South Carolina 29611

Myrtle Beach Communications
325 53rd Avenue
North Myrtle Beach, South Carolina 29582

Harry L. Parker
dba Parker Electronics
P. O. Drawer H
Georgetown, South Carolina 29440

Rock Hill Mobile Communications, Inc.
P. O. Box 470
Rock Hill, South Carolina 29730

Tele-Page
2400 Decker Boulevard
Columbia, South Carolina

WATER AND SEWERAGE DEPARTMENT

The majority of water and sewerage utilities operating in the State of South Carolina are owned and operated by municipalities and public water and sewer districts which are exempt, by state statute, from jurisdiction of the Public Service Commission. The cities of Anderson, St. George, and Walterboro are provided water service by privately owned utilities and therefore are regulated by the Public Service Commission.

Efforts to improve efficiency of each company has brought consolidation of many of the smaller companies. As of June 30, 1977, there are 215 water systems, and 213 sewerage systems operating under 172 companies regulated by the South Carolina Public Service Commission.

There were 24 new water or sewerage utilities granted Certificates of Public Convenience and Necessity during the fiscal year and 2 water or sewerage utilities that were granted certificated areas under formally organized corporations.

More stringent demands by state and federal agencies, higher operating and maintenance costs, wages and supplies caused 21 water and sewerage companies, operating in this state, to apply to the Commission for authority to increase their rates and charges for water and sewerage service.

As prescribed by law and after proper advertisement, public hearings were held on each application for adjustments in water and sewerage rates and charges.

The problems of water and sewerage utilities continue to be problems for the Public Service Commission. The Public Service Commission received a substantial number of customer complaints during the fiscal year. These complaints fell into one of two categories, either service or billing; each complaint was investigated and settled informally, or if necessary, resolved through public hearings.

Prior to issuing a Certificate of Public Convenience and Necessity to a water or sewerage utility, the Commission, among other things, requires a performance bond in accordance with Section 58-149 of the 1962 Code of Laws of South Carolina as amended, complete cost and rate data, approval of adequate design, and supply potential, plat of proposed area to be served and copy of engineering plans and specifications.

WATER UTILITIES OPERATING IN SOUTH CAROLINA AS OF JUNE 30, 1977

Name of Utility	Service Area	Managing Officer/Addressee	Address
A. D. Hare, d/b/a A. D. Hare	Huntington Place Subdivision and Pinopolis	A. D. Hare, Owner	Pinopolis, S. C.
Water Works	Elm Village Subdivision	John Marcotsis, Owner	Summerville, S. C.
Aqua Company	Augusta Fields Subdivision	H. D. Bushardt, President	Greenwood, S. C.
Augusta Fields Utility System	Big Rock Subdivision	George F. Rownes, Attorney	Greenville, S. C.
Big Rock Water Company	Hill Acres Subdivision	Bobby Joe Solesbee	Spartanburg, S. C.
Bobby Joe Solesbee, d/b/a Bobby Joe Solesbee Utility Company	Rockview Heights, Centerville Terrace Properties, Cloverdale, Englewood, Lake Crest, Avondale, Woodhaven Estates, Forest Park, Chateau Acres	Eugene F. Bobo, Owner	Anderson, S. C.
Eugene F. Bobo Well Drilling Company ..	Bon Aire Subdivision	Joe H. Bonds, Owner	Clinton, S. C.
Bon Aire Development Water Co.	Brookgreen North Subdivision	D. C. Jackson	Florence, S. C.
Brookgreen Water Company	Laurel Meadows, Rollingwood, Harborside, Springhill, Oakcrest, Grayland Forest, Kings Grant, Glen Village II, Hollywood Hills, Meadowlake Hills, Pocalla Vil- lage, Carolina Estates, Falcon Ranches, Sycamore Acres, Westside Terrace, Oak- wood, Tifton, Botany Acres, Carolina Acres, Grove Park, Plantation Place, Westchester, Arrowood, Blue Ridge Ter- race, Indian Pines, Idlewood, Heather- wood, Briarcliffe, Garden City area ...	Millard Shriver	West Columbia, S. C.
Carolina Water Service, Inc.	Cedarwood Subdivision	John M. Summers	West Columbia, S. C.
Cedarwood Utilities, Inc.	Cherry Hill Subdivision	F. L. Burnett, Jr., President	Ninety Six, S. C.
Cherry Hill Subdivision Water System ...	Subdivision No. 1	Marion H. Davis, Manager	Greenwood, S. C.
Chinquapin Properties, Inc.	Clarke Estates Subdivision	James Parker	Gainesville, Georgia
Clarke Estates Water System	Clinton Cotton Mill and Lydia Mill	George H. Cornelson, V. P.	Clinton, S. C.
Clinton Cotton Mills	Clover Hill Subdivision	Coy Miller, Jr.	Anderson, S. C.
Clover Hill Water System	Berkeley Country Club Estates	James Preacher	Charleston, S. C.
Club Water Company, Inc.	River Hills Plantation, Point South Sub- division, Hilton Head Plantation	J. Roy Martin, III	Clover, S. C.
Commodore Utility Corporation	Cabin Creek Subdivision	Preston H. Callison, Attorney	Columbia, S. C.
Commonwealth Utility Co., Inc.	Hollywood Manor	Raymond A. Knight, Jr.	Charleston, S. C.
Community Water System	Creekwood Subdivision	V. George Lander	Lexington, S. C.
Creekwood Utilities			

WATER UTILITIES OPERATING IN SOUTH CAROLINA AS OF JUNE 30, 1977—Continued

Name of Utility	Service Area	Managing Officer/Addressee	Address
Orest Water Company, Inc.	Wintercrest Subdivision	Melvin B. McKeown, Jr.	York, S. C.
DeBordieu Colony Club, Inc.	DeBordieu Colony Subdivision	Wallace F. Pate	Georgetown, S. C.
Delta Water Company	Mobile Homes Estates, Pinehill Acres, Stratton Capers, Belmont, Tranquil Acres, University Park	James Preacher	Charleston, S. C.
Dinkins Water Development Co.	Dinkins Development	J. A. Dinkins, Manager	Sumter, S. C.
Duke Power Company	Anderson, vicinity of Clemson and Pendle- ton, S. C., Stonewall Woods	Carl Horn, President	Charlotte, N. C.
Dunmovin Utilities, Inc.	Dunmovin Subdivision, Island Estates Sub- division, Orleans Woods, Cedar Springs	James Preacher	Charleston, S. C.
Edenwood Water Company	Edenwood Subdivision	William C. Hawley	West Columbia, S. C.
Fairlawn Utilities, Inc.	Fairlawn Subdivision	Peggy C. Sox	Lexington, S. C.
Fork Shoals Water Works	Fork Shoals Village	J. E. Haller, Assistant Treasurer	Ware Shoals, S. C.
Foxwood Utilities Inc.	Foxwood Subdivision	Michael Hill, General Manager	Fort Mill, S. C.
General Utilities	Grustark, Albene Park, Lloydwood Subdivisions	Preston H. Callison, Attorney	Columbia, S. C.
Glendale Water Corporation	Tara Village, Park City Mobile Home Park	H. F. Grantham, Jr.	Florence, S. C.
GMK Development Corporation	Green Pond Estates	Oliver S. Melton	Port Royal, S. C.
Gnato's Utility	Gnato's Acres Subdivision	F. H. Waden	High Point, N. C.
Hallmark Shores Water Systems	Hallmark Shores Subdivision	Lucius O. Porth	Lexington, S. C.
Heater Utilities, Inc.	Springfield Acres, Dutch Village, Lincoln- shire, Farrowood, Raintree Acres, Wash- ington Heights, Charleswood, Vanars- dale, Bellemede, Parkwood, Royal Hills, Ballentine Acres, Harmon Estates, South Congaree, Murray Park, Murray Lodge, Dutchman Shores, Indian Cove, Tanya Terrace, Emma Terrace, Lake Village, Glen Village, Dublin Village, Melmont Shores, Dutchman Acres, Arrowhead Shores, Charwood, Lexington Estates, Oakland Plantation, Tanglewood, Fox- trail Subdivisions	Percy McNeil	Columbia, S. C.
Hermitage Utility Company	The Hermitage Subdivision	B. M. Thompson, Jr., Attorney	Hilton Head Island, S. C.
Hilton Head Water Company	Blue Heron Point, Bram's Point, Spanish Wells, Mariner's Cove, Burke's Beach ..	Joe Y. Pitts, President	Hilton Head Island, S. C.

Holly Utilities Company	Ashcroft Hall Subdivision	Delbert Goforth, Manager	Charleston, S. C.
Horse Island Service Corporation	Horse Island and Vue Point Subdivision ..	G. H. O'Kelley	Hilton Head Island, S. C.
Hughes Well Drilling & Pump Co.	Middleton Shores, Hill & Dale, Sherwood Forest, Clearview Heights, Green Forest, Fieldcrest Acres, Beigewater, Suriside Heights, Lakewood, Town Creek Acres, Edgebrook, Pinecrest, Haynie Builders, Lakeland, Normandy Park, Leon Drive, Dobbins Estates, Hidden Lake Sub- divisions, Pine Forest Subdivision, and Nevitt Forest Subdivision	B. M. Hughes, Owner	Anderson, S. C.
Hyde Park Water Company	Hyde Park Subdivision	John S. Coleman, Manager	Greenwood, S. C.
Island Water Company	Rollingwoods Acres Subdivision	W. W. Eller, President	Ladson, S. C.
Isle of Palms Water Company	Forest Trail Subdivision, Isle of Palms ..	Charles S. Way, President	Isle of Palms, S. C.
J. C. Cloniger, d/b/a Springlake Estates Water System	Spring Lake Subdivision	J. C. Cloniger, Owner	York, S. C.
J. D. Nicholson Water Company	Located in the city limits of Greenwood, S. C.	J. D. Nicholson, Owner	Greenwood, S. C.
Charles Kellett & Son, Inc.	Woodlawn Park Subdivision	Charles Kellett	Greenville, S. C.
Kiawah Island Utilities, Inc.	Kiawah Island	Gary G. Pyles	Atlanta, Georgia
Lake Marion Shores	Oliver Subdivision	Howard Oliver, Owner	Summerton, S. C.
Lake Murray Utilities, Inc.	Murray Hill Estates, Harrisburg Sub- division	Willie L. Sox, President	Lexington, S. C.
Lake Murray Water Corporation	Watergate Subdivision	Millard Shriver	W. Columbia, S. C.
Litchfield Plantation Public Service Co.	Litchfield Plantation Subdivision	Al Mozley	Georgetown, S. C.
Lockhart Power Company	Lockhart and Monarch Villages	W. F. Tribble, Assistant Treasurer ..	Lockhart, S. C.
Lofton A. Ivey Water Company	Barber Street Subdivision	Lofton A. Ivey	Union, S. C.
Lost Wilderness, Inc.	Lost Wilderness Subdivision	Gene O. White, President	Lavonia, Georgia
Marina Colony, Inc.	Marina Colony near Murrells Inlet	William Hagan	Johnsonville, S. C.
Mark Water Works, Inc.	Gray's Hill Subdivision	Ernest G. Mark, President	Beaufort, S. C.
McCombs Water System	McCombs Subdivision	Herbert E. Anderson	Greenwood, S. C.
Meadowbrook Water Works, Inc.	Meadowbrook Subdivision and Hollings Marina Subdivision	R. D. Ferguson	Spartanburg, S. C.
Mountain Bay Estates Utility Co., Inc. ..	Mountain Bay Estates	Larry Estridge	Atlanta, Georgia
Mt. Gilead Realty Company	Mt. Gilead Subdivision	W. B. Norwood	Murrells Inlet, S. C.
North Pines Utility Company, Inc.	Stonegate Subdivision	J. Allen Shumaker	Columbia, S. C.
Oak Grove Estates Utilities	Oak Grove Estates Subdivision	S. V. Oxner, Owner	Lexington, S. C.
Ohio Construction and Engineering	Madera Subdivision	T. G. Daniel, Jr.	Spartanburg, S. C.
Old Barnwell Road Utility Co., Inc.	Land of Lakes, Southgate Subdivision ..	Albert E. Sturkie	Columbia, S. C.
Roy A. Owen Water System	Adjacent to Greenwood	Roy A. Owen, Owner	Greenwood, S. C.
Palmetto Utilities Corporation	Oakdale Subdivision and Country Club of South Carolina	Billy F. Burnett, Vice President	Florence, S. C.
Peachtree Water Company, Inc.	Peachtree Acres	John Hydrick, Attorney	West Columbia, S. C.
Peoples Water Service of South Carolina .	St. George and Walterboro	G. L. B. Rivers, Attorney	Charleston, S. C.

WATER UTILITIES OPERATING IN SOUTH CAROLINA AS OF JUNE 30, 1977—Continued

Name of Utility	Service Area	Managing Officer/Addressee	Address
The Peoples Agency	Partridge Woods	Henry V. Boyce, Manager	Beaufort, S. C.
Pinedale Utility Company	Guignard Park, Ashley Creek and Pinedale Subdivisions	Dan Trotter, President	Sumter, S. C.
Platt Water Company	Lakewood Plantation, Deerfield Plantation	V. F. Platt, Jr.	Surfside Beach, S. C.
Prize Point Utility Company	Charleswood Estate Subdivision and Farrowoods Subdivision	George Alley, Attorney	Columbia, S. C.
Providence Water System	Harris Subdivision	Mrs. A. M. Harris	Dalzell, S. C.
Pumpkin Center Water Works	Pumpkin Center	R. E. Coleman, Manager	Pacolet, S. C.
R. W. Norman, d/b/a Warren Norman & Co.	Riverview Subdivision	R. W. Norman	Rock Hill, S. C.
Regency Utilities, Inc.	Dorchester Regency Subdivision	Arnold Goodstein, Attorney	Dorchester, S. C.
Reynolds Water Works, Inc.	Clifton Community	Shirley H. Reynolds	Clifton, S. C.
Rice Corporation	Look-Up-Forest Subdivision	Max M. Rice	Travelers Rest, S. C.
Rock Bluff Utilities, Inc.	Rock Bluff Subdivision	Roscoe M. Hinson, President	Kingstree, S. C.
Seabrook Utilities Corporation	Seabrook Island Development	Richard T. Collier, President	Johns Island, S. C.
Stephenson Investment Co., Inc.	Stephenson Lakes Subdivision	H. P. Stephenson	Columbia, S. C.
Taylor Waterworks, Inc.	Pine Forest, Pecan Grove Subdivision	James Taylor, Owner	Ridgeland, S. C.
Tega Oay Utilities, Inc.	Tega Oay Subdivision	Lee McClurkin, Jr., President	Ft. Lawn, S. C.
Tranquil Utilities	Tranquil Acres Subdivision	Walter Wilkins	Ladson, S. C.
Trolley Enterprises	Millwood Subdivision	Edward A. Riley, Secretary	Summerville, S. C.
Trollingwood Water and Sewerage Utilities	Trollingwood Subdivision	Michael B. Hall, Planning Coordinator	Greenville, S. C.
United Merchants & Mig., Inc.	Midland Valley Estates	J. Lester Thompson, Manager	Bath, S. C.
Water Distributors, Inc.	Belvedere Ridge Subdivision, Bradley Terrace Subdivision, and Bradleyville area	Robert Harris, Manager	Belvedere, S. C.
Westoe Plantation Land Dev. Co.	Sprucewood Subdivision	Granville S. Way, Jr.	Summerville, S. C.
Westover Water Company	Westover Subdivision	P. O. Partridge, Jr., Owner	Greenwood, S. C.
West Side Water Company	Hill Dale Subdivision	Robert F. Burgess, President	Sumter, S. C.
White Sands Water Company	Adjacent to Hodges	G. P. Callison, Secretary	Greenwood, S. C.
Wikoff Utilities Corporation	Wikoff Development Sub.	Phillip L. Lambert, Treasurer	Fort Mill, S. C.
Woodlawn Water Company	Woodlawn Subdivision	W. Clayton Thompson	Greenwood, S. C.

SEWERAGE UTILITIES OPERATING IN SOUTH CAROLINA AS OF JUNE 30, 1977

Name of Utility	Service Area	Managing Officer/Addressee	Address
Alpine Utilities, Inc.	Woodland Hills West No. 2, Woodland Hills No. 3, Mandel Park Subdivision, Bonnie Forest, Farmdale, Groves Subdivision, Sherwood Park, S. C. Education Association	J. Donald Dial, President	Columbia, S. C.
Aqua Company	Elm Village Subdivision	John Marcotsis	Summerville, S. C.
Arlington Development Co.	Arlington Subdivision	Ralph L. Smith, Jr., President	Lugoff, S. C.
Artistic Builders, Inc.	Whispering Pines, Bent Tree Subs.	Larry Gibson, President	Easley, S. C.
Ashley Utilities, Inc.	Ashley Forest Estates Subdivision	William S. Branton, President	Summerville, S. C.
Augusta Fields Utility System	Augusta Fields Subdivision	G. P. Callison	Greenwood, S. C.
Barbara Wiley, Individual, d/b/a Northfall Acres Wastewater System	Northfall Acres Subdivision	Barbara Wiley	Greenwood, S. C.
Bondale, Inc.	Bondale Subdivision	G. Ray Harris, President	Spartanburg, S. C.
Clyde G. Branham, Inc.	Lakewood Subdivision	Clyde G. Branham, President	Lugoff, S. C.
Briarcliffe Estates	Briarcliffe Estates Subdivision	Robert E. Staton, Attorney	Columbia, S. C.
Briarcreek Utilities	Briarcreek Subdivision	F. W. Sossamon, President	Gaffney, S. C.
Bush River Utilities, Inc.	Vicinity Dutch Square, Bush River Rd. ..	Neal MacGiehan, President	Greenville, S. C.
Business Brokers of the South	Mayfield Park Subdivision	Michael M. Rothberg	Columbia, S. C.
Carolina Water Service, Inc.	Laurel Meadows, Rollingwood, Harborside, Springhill, Oakcrest, Grayland Forest, Kings Grant, Glen Village II, Hollywood Hills, Meadowlake Hills, Pocalla Village, Palmetto Apartments, Lincolnshire, White's Creek, Stratton Hall, Woodsen, Friaragate, Greensprings, Meadowlake (Parcel F-1, Section A), Mandel Hall, Pocalla Heights, Belk, Oakland Plantation	Millard Shriver	West Columbia, S. C.
Clover Hill Water System	Clover Hill Subdivision	Richard Rulhe, Attorney	Anderson, S. C.
Club Water Company, Inc.	Berkley Country Club Estates	James Preacher	Charleston, S. C.
Colonial Realty and Construction Co.	Lakeview Manor Subdivision	J. E. Gremillion, President	Spartanburg, S. C.
Commodore Utility Corp.	Hilton Head Plantation	J. Roy Martin, III	Clover, S. C.
Commonwealth Utility Co., Inc.	Cabin Creek Subdivision	Preston Oallison, Attorney	Columbia, S. C.
Community Sewerage System	Oakcrest & Hollywood Manor Subs.	Raymond K. Knight, Jr.	Charleston, S. C.
Consolidated Utilities, Inc.	Bendemeer Subdivision	Tom Jenkins, President	Columbia, S. C.
Consolidated Utility Services, Inc.	Okatee Subdivision	John F. Murphree, President	Moncks Corner, S. C.
Country Club Sewer, Inc.	Country Club Heights	Steve Melton, President	Lancaster, S. C.
DeBordieu Colony Club, Inc.	DeBordieu Colony Subdivision	Wallace F. Pate	Georgetown, S. C.

SEWERAGE UTILITIES OPERATING IN SOUTH CAROLINA AS OF JUNE 30, 1977—Continued

Name of Utility	Service Area	Managing Officer/Addressee	Address
Delta Investment Company, Inc.	Dunston Hills and North Pines Suba.	Earle W. Kirkwood, President	Columbia, S. C.
Delta Water Company	Stratton Capers, Belmont, Tranquil Acres, Mobile Home Estates	James Preacher	Charleston, S. C.
Development Service, Inc.	Dutchbrook Subdivision and vicinity of Dutch Square	L. Arlen Cotter, President	Columbia, S. C.
Dorchester Land Development	Oakdale Subdivision	Edward A. Knight, President	Summerville, S. C.
Dunmovin Utilities, Inc.	Dunmovin Subdivision, Island Estates Sub- division, Farmington, Whitehouse Plan- tation, Landsdown	James Preacher	Charleston, S. C.
East Lake City Utilities	Martha Law Subdivision	Howell A. Wilson, Attorney	Lake City, S. C.
Edenwood Water Company, Inc.	Edenwood Subdivision	William C. Hawley	Columbia, S. C.
Farrow Terrace Utility Company	Farrow Terrace, Greenview, Highland For- est Subdivisions	M. B. Swindler, Owner	Columbia, S. C.
Foxwood Utilities, Inc.	Foxwood Subdivision	Michael Hill, General Manager	Fort Mill, S. C.
Fripp Island Development Corporation ..	Fripp Island Development	L. E. Terrell, III, Director of Operations ..	Fripp Island, S. C.
General Utilities, Inc.	Washington Park and Lloydwood Subs. ..	W. E. Sellars, President	Columbia, S. C.
G & K, a Partnership	Sedgefield Subdivision Ext.	Joseph Griffith, Partner	Charleston, S. C.
Glendale Water Corporation	Tara Village and Park City Subs.	H. F. Grantham, Jr., President	Florence, S. C.
Gordon Frams, Inc.	Hillbrook Forest Subdivision	John F. Dunbar, Vice President	Spartanburg, S. C.
Greenhurst Utility Co., Inc.	Greenhurst Subdivision	J. W. Miles, President	Charleston, S. C.
Greystone Utility Corporation	Riverland Development Subdivision	E. Crosby Lewis	Columbia, S. C.
Heater Utilities, Inc.	Springfield Acres, Dutch Village, Lincoln- shire, Farrowood, Raintree Acres, Wash- ington Heights, Charleswood, Vanars- dale, Bellemede, Parkwood, Royal Hills, Westgate, Arborgate, Northwood Estates ..	Percy McNeill	Columbia, S. C.
Holly Utilities	Ashcroft Hall Subdivision	I. M. Goldberg, Attorney	Charleston, S. C.
Isle of Palms Water Co.	Forest Trail Subdivision, Isle of Palms ..	Charles S. Way, President	Isle of Palms, S. C.
Jackson Mills	Jackson Mills Village	Homer Elmore, Vice President	Wellford, S. C.
James Island Plantation Service	Lawton Bluff Subdivision	Thomas L. Read, Manager	Charleston, S. C.
William A. James Realty Co.	Ramsev Acres Subdivision	William A. James	Myrtle Beach, S. C.
Kiawah Island Utilities, Inc.	Kiawah Island	Gary G. Pyles	Atlanta, Georgia
Ladson Utilities, Inc.	College Park Subdivision	Gordon Darby	Charleston, S. C.
Leesburg Utilities, Inc.	Yorkshire Extension Subdivision	Charles Kiser, President	Columbia, S. C.
Leon D. Todd, d/b/a Pine Valley Estates Utility	Pine Valley Estates Subdivision	Leon D. Todd, Jr.	Conway, S. C.
Litchfield Plantation Public Service Co. ..	Litchfield Plantation Subdivision	Al Mozley	Georgetown, S. C.

Litchfield Utility Company	Inlet Point, Salt Marsh Cove, Litchfield Retreat, Litchfield Golf Company	Douglas L. Hinds, Attorney	Georgetown, S. C.
Litco, Inc.	Leawood Subdivision	William J. Lawrence, Vice President ..	Sumter, S. C.
Lockhart Power Company	Monarch and Otteray Village	W. F. Tribble	Lockhart, S. C.
Locksley Hall, Inc.	Locksley Hall Subdivision	Joseph M. McClellan	Greenwood, S. C.
Lost Wilderness, Inc.	Lost Wilderness Subdivision	Gene C. White, President	Lavonia, Georgia
Lynwood Utility, Inc.	Lynwood Subdivision	Harold Simmons, President	Charleston, S. C.
Major Homes, Inc.	Meadow Park Subdivision	John Holman, President	Anderson, S. C.
Marina Colony, Inc.	Marina Colony near Murrell's Inlet	William Hagan	Johnsonville, S. C.
Martha Law Utilities, Inc.	Quail Creek Subdivision	J. T. McAlister, President	Columbia, S. C.
Meadowbrook Water Works, Inc.	Meadowbrook Subdivision	R. D. Ferguson	Spartanburg, S. C.
Mountain Bay Estates Utility Co., Inc.	Mountain Bay Estates	Larry Etridge	Atlanta, Georgia
Mt. Gilead Realty Company	Mt. Gilead Subdivision	W. B. Norwood, President	Murrells Inlet, S. C.
National Holding Company	Farrow Hills Subdivision	J. T. Swindler	Columbia, S. C.
North Brookdale Sewerage Co.	North Brookdale Subdivision	Fred R. Fanning, Attorney	Orangeburg, S. C.
North Pimlico Corporation	Pimlico Subdivision	Alton H. Parks, Acting Agent	Charleston, S. C.
North Pines Utility Company, Inc.	Stonagate Subdivision	J. Allen Shumaker	Columbia, S. C.
Northsprings, Inc.	Northsprings Subdivision	Edwin H. Cooper, Jr., Attorney	Columbia, S. C.
Frank M. Nutt	Brookside Village Mobile Home Sub.	Frank M. Nutt	Moore, S. C.
Oak Grove Estates Utilities, Inc.	Oak Grove Estates Subdivision	S. V. Oxner, Owner	Lexington, S. C.
Ohio Construction and Engineering Co.	Madera Subdivision	T. G. Daniel, Jr., President	Spartanburg, S. C.
Old Barnwell Road Utility Company, Inc.	Land of Lakes, Southgate Subdivision	Albert E. Sturkie	Columbia, S. C.
Oliver Enterprises of Charleston, Inc.	Westchester Estates, Kings Grant and Pepper Hill Subdivisions	Jerry R. Oliver	Charleston, S. C.
Otranto Land Company	Otranto, Otranto Sectors, I, II, III, IV, and Otranto Villas	A. J. Combs	Charleston, S. C.
Patton's Environmental Associates	Canterbury and The Village Subdivisions ..	Ray Patton, President	Greenville, S. C.
Piedmont Development of Greenwood	Willows Subdivision	W. H. Dyer, President	Greenwood, S. C.
Pine Forest Utilities, Inc.	Pine Forest Subdivision	Cecil A. Riley, President	Columbia, S. C.
Pinedale Utility Company	Pinedale, Ashley Creek Village, and Guignard Park Subdivisions	Dan Trotter, President	Sumter, S. C.
Platt Water Company, Inc.	Deerfield Plantation Subdivision	V. F. Platt, Jr.	Surfside Beach, S. C.
Prize Point Utility Company	Charleswood Estates and Farrowoods Subdivision	George I. Alley, Attorney	Columbia, S. C.
Quail Arbor Estates Corp.	Quail Arbor Estates	Edward A. Knight, President	Summerville, S. C.
Quail Hollow Company	Quail Hollow Subdivision	William F. Austin, Attorney	Columbia, S. C.
Queensboro Sewerage Corp.	Queensboro Subdivision	Joseph P. Griffith, President	Charleston, S. C.
R.A.E. Associates, Inc.	Eastwood Acres Subdivision	Frederick L. Evan, Gen. Mgr.	Orangeburg, S. C.
Regency Utilities, Inc.	Dorchester Regency Subdivision	Arnold Goodstein, Attorney	Charleston, S. C.
Ribaut Insurance Agency	Cherry Hill Estates Subdivision	Barry L. Johnson, Attorney	Beaufort, S. C.
Rice Corporation	Look-Up-Forest Subdivision	Max M. Rice	Travelers Rest, S. C.
Rock Springs Development Corp.	Rock Springs Development Subdivision ..	Ralph L. Smith, Jr.	Lugoff, S. C.
Rowland and Lynch	Linville Subdivision	Raymond C. Eubanks, Attorney	Spartanburg, S. C.
Seabrook Utilities Corp.	Seabrook Island Development	Richard T. Collier, President	Johns Island, S. C.

SEWERAGE UTILITIES OPERATING IN SOUTH CAROLINA AS OF JUNE 30, 1977—Continued

Name of Utility	Service Area	Managing Officer/Addressee	Address
Shelley Enterprises, Inc.	Shelley Acres Subdivision	William I. Shelley	Myrtle Beach, S. C.
St. James Utility, Inc.	St. James Estates Subdivision	Arnold Goodstein, Attorney	Charleston, S. C.
Smokerise Utilities, Inc.	Smokerise Subdivision	J. W. Keistler, Jr.	Rock Hill, S. C.
S. C. Utilities, Inc.	Gem Lakes Estates Subdivision	Hugo S. Sims, III	Orangeburg, S. C.
George H. Hamrick, Jr., President	Southeastern Real Estate Factors, Inc.	Star Cliffe Estates Subdivision	Lancaster, S. C.
Springfield Utility Company	Springfield No. 8 Subdivision, Willowoods and Ferndale Subdivision	Jim Smith, President	Spartanburg, S. C.
Storm Branch Sewers, Inc.	Belvedere Ridge Subdivision, Shady Ridge, Bradley Terrace, Pinecrest	William A. Trotter, President	Augusta, Georgia
Sunnyhill, Inc.	Sunnyhill Subdivision	Sheddie Tetterton	Camden, S. C.
Sunset Lagoon, Inc.	Stratton Hall Subdivision	Augustus R. Graydon, Attorney	Columbia, S. C.
Tacoma Utilities, Inc.	Crane Forest Subdivision	Michael H. Quinn	Columbia, S. C.
Tall Pines Utilities, Inc.	Tall Pines Plantation	Charles I. Goldberg, Attorney	Charleston, S. C.
Tega Cay Utilities, Inc.	Tega Cay Subdivision	Lee McClurkin, Jr., President	Fort Lawn, S. C.
Terraceway Service Co., Inc.	Candlewood Parcel A, Prescott Terrace, North 21 Terrace, North 21 Section "E", Meadowlake, Star-Lite, Crane Creek, Meadowlake—Sections "C-1", "D", and "E" Candlewood	E. D. Sauls, President	Columbia, S. C.
Tranquil Utilities, Inc.	Tranquil Acres Subdivision	Walter Wilkens	Ladson, S. C.
Trolley Enterprises	Millwood, Rose Hill Extension and Wood-lawn Subdivisions	Edward A. Riley, Secretary	Summerville, S. C.
Trollingwood Water & Sewer Utilities ...	Trollingwood Subdivision	Michael B. Hall, Planning Coordinator ..	Greenville, S. C.
Twin Lakes of Sumter, Inc.	Twin Lakes of Sumter Subdivision	Arthur L. Harper	Sumter, S. C.
Utilities, Inc. (Bagnal Bldrs.)	Charles Towne Subdivision	M. R. Bagnal, Jr., Manager	Columbia, S. C.
Utilities Services, Inc.	Edinburg Subdivision	Preston Callison, Attorney	Columbia, S. C.
Universal Utilities Corp.	Grayland Forest Subdivision	Millard Shriver	West Columbia, S. C.
Valley Dale Utility Co.	Idlewood, and River Forest Subdivisions ..	Quenton L. Wood	Spartanburg, S. C.
W. M. Harvey Investment Properties, Inc.	Oakmont Subdivision	W. M. Harvey, President	Orangeburg, S. C.
Water Distributors, Inc.	Belvedere Terrace	Robert H. Harris, Vice President	Belvedere, S. C.
Wedgfield Plantation Pub. Serv. Co.	Wedgfield Subdivision	Douglas L. Hinds, Attorney	Georgetown, S. C.
Westoe Plantation Land Develop. Co.	Sprucewood Subdivision	Granville S. Way, Jr.	Summerville, S. C.
Wikoff Utilities Corp.	Wikoff Development Subdivision	Phillip L. Lambert, Treasurer	Fort Mill, S. C.
Wildewood Utilities, Inc.	Wildewood Subdivision	C. Heath Manning, President	Columbia, S. C.
William A. James Realty Co., Inc.	Ramsey Acres Subdivision	William A. James	Myrtle Beach, S. C.
Woodlands Utilities, Inc.	Woodlands Hills Subdivision	J. D. Dial, Attorney	Columbia, S. C.
Woodside-Woodview Utility Co.	Woodside-Woodview Manor	Laurence O. Stoney, Attorney	Charleston, S. C.

TRANSPORTATION DIVISION

Administration—The duty of this Division is to enforce the Motor Vehicle Carrier Law of the State, Sections 58-23-10 - 58-23-60 of the South Carolina Code of Laws, 1976, as amended. The Law provides for the regulation, supervision and control of persons, firms, corporations, etc., operating motor vehicles used in the business of transporting persons or property for compensation over the highways of the State, and impose license fees to cover the cost of administration.

During the period of this report, fifty-five (55) hearings were held in connection with motor transportation matters.

In connection with Class E (motor freight service over irregular routes), forty-one applications for Certificates were heard, of which twenty-five were granted, and three denied. Eleven applications to amend Class E Certificates were heard, of which ten were granted and one denied. Two applications to transfer Class E Certificates were heard and granted.

Twelve applications for Class F (motor freight service under contract) Certificates were heard, of which ten were granted. Two applications to amend Class F Certificates were heard and granted.

Two applications for Class C (taxi cabs and charter buses) Certificates were heard and granted .

A Rule to Show Cause why Certificates of Public Convenience and Necessity should not be revoked for failure to comply with the Motor Vehicle Carrier Law of South Carolina was issued against eighty-two carriers, resulting as follows: Rules against one Restricted Class A Certificate holder was dismissed, one Certificate was suspended, six Certificates were cancelled, and eight Certificates were revoked. Rule against one Class C Certificate holder was dismissed, one Certificate was suspended, three Certificates were cancelled, and nine Certificates were revoked. Rule against one Restricted Class B Certificate holder was suspended. Rules against four Class E Certificate holders, Restricted Interstate Commerce Only, were dismissed, and two Certificates were revoked. Rules against fourteen Class E Certificate holders were dismissed, two Certificates were suspended, and eleven Certificates were revoked. Rules against four Class F Certificate holders were dismissed, three Certificates were suspended, and ten Certificates were revoked. Rule against one Class F Certificate holder, Restricted to Interstate Commerce Only, was revoked.

A second Rule to Show Cause why Certificates of Public Convenience and Necessity should not be revoked for failure to comply

with the Motor Vehicle Carrier Law of South Carolina was issued against one-hundred and thirteen carriers, resulting as follows: Rules against six Restricted Class A Certificate holders were dismissed, one Certificate was cancelled, and six Certificates were revoked. Rule against one Class A Certificate holder was revoked. Rule against two Class C Certificate holders were dismissed, one Certificate was cancelled, and seven Certificates were revoked. Rules against four Class E Certificate holders, Restricted to Interstate Commerce Only, were dismissed, and eleven Certificates were revoked. Rules against thirty-seven Class E Certificate holders were dismissed, one Certificate was suspended, and twelve Certificates were revoked. Rules against two Class D Certificate holders, Restricted to Interstate Commerce Only, were revoked. Rules against eight Class F Certificate holders were dismissed, one Certificate was suspended, and ten Certificates were revoked. Rules against two Class F Certificate holders, Restricted to Interstate Commerce Only, were dismissed, and one Certificate was revoked.

In addition to matters which were disposed of after public hearing, five hundred and fifty-five Orders were issued disposing of motor transportation matters without hearings.

In connection with Class A Carriers (regular route bus); twenty-one Restricted Class A Certificates were granted, thirteen Certificates were cancelled, five Certificates were suspended, four Certificates were amended and one Certificate was transferred.

In connection with Class B Carriers (regular route bus irregular schedule); one Certificate was granted, and one Certificate was cancelled.

In connection with Class C Carriers; ninety-seven Certificates were granted, one hundred and fifty Certificates were cancelled, six Certificates were suspended, seven Certificates were amended, and One Certificate was transferred.

In connection with Class E Carriers, thirty-four Certificates were granted, twenty Certificates were cancelled, twenty-four Certificates were suspended, twelve Certificates were amended, twenty-seven Certificates were transferred, three applications for Class E Certificates were denied, eight applications were dismissed, four applications to amend Class E Certificates were dismissed, seven Petitions for Rehearing were denied, two stock transfer were approved, four applications for lease of authority were granted, two applications for reinstatement of Class E Certificates were granted, and one application was denied, one Class E Certificate was corrected. Twenty-seven

Class E Certificates, Restricted to Interstate Commerce Only, were granted, three Certificates were cancelled, and one Certificate was transferred.

In connection with Class F Carriers; four Certificates were granted, twenty-two Certificates were cancelled, nine Certificates were suspended, two Certificates were transferred, twelve Certificates were amended, three applications to amend Class F Certificates were dismissed, five applications for Class F Certificates were dismissed, one Certificate was reinstated, and one suspension was lifted. Four Class F Certificates, Restricted to Interstate Commerce Only, were granted.

In connection with Class D Carriers (regular route bus regular schedule); one Certificate was cancelled, one Certificate was transferred, and one Certificate was suspended. One Class D, Restricted to Interstate Commerce Only, was granted, and one Certificate was suspended.

Sections 58-1451 and 58-1452 which provide for the South Carolina Public Service Commission to issue drivers permits were repealed, and the Bill to be filed with the Legislature.

The Transportation Division has jurisdiction over city bus transportation where the bus service supersedes electric street railway transportation. This gives the Commission jurisdiction over city bus transportation in Anderson, Charleston, Columbia and Spartanburg, S. C.

Gasoline and diesel buses were operated in South Carolina by the Duke Power Company at Anderson and Spartanburg, and by the South Carolina Electric and Gas Company at Charleston and Columbia, S. C.

During the year 1976, the above named bus companies transported 11,412,051 passengers as compared to 11,460,619 in 1975. This was a decrease of 48,568 passengers in 1976 compared to 1975. (The 48,568 shows a 4% drop in total passengers for 1976).

During the fiscal year 1976-77, a number of changes were made in bus routes and schedules in order to make the most economical use of the facilities of various bus transportation companies operating in this State.

LICENSING DEPARTMENT

Carriers operating within the State of South Carolina on an intra-state basis, and carriers based in South Carolina operating on an interstate basis have, over the years, purchased licenses and paid fees as indicated by the table below.

Statement Showing Receipt and Deposits to the Credit of the State Treasurer, Cost of Administration and Balance for Distribution to Cities and Towns during the Period July 1, 1976, thru June 30, 1977

Revenue Receipts:		
Class A Licenses	\$ 136,938.42	
Class B Licenses	697.52	
Class C Licenses	21,525.75	
Class D Licenses	30,118.85	
Class E Licenses	584,960.25	
Class F Licenses	48,568.00	
*Drivers Permits	27,748.00	
Forfeited Appearance Bonds	50.00	
<hr/>		
Total Fees (Gross)	\$ 850,606.20	
Less Fees Refunded	789.50	
Less Uncollectable Items on Hand	486.60	1,276.10
Total Fees (Net)		849,330.19
Receipts from S. C. Tax Commission		
(Motor vehicle registrations)	778,005.00	
Total License and Registration fees	1,627,335.19	
Cost of Administration	680,239.39	
Balance for Distribution to Cities and Towns	947,095.80	
Total		\$1,627,335.19

APPEARANCE AND CASH BOND ACCOUNT:

On hand July 1, 1976	\$ 2,900.00
Collected	8,350.00
Total	11,250.00
Less Bonds Refunded & Forfeited	4,850.00
Balance on hand June 30, 1977	6,400.00

* The General Assembly of the State of South Carolina repealed Section 58-1451 through 58-1453, Code of Laws of South Carolina, 1962, Relating to Drivers' Permits required by The Public Service Commission, effective May, 13, 1977.

With the growth of the motor carrier industry in this State, together with the better enforcement of the Motor Carrier Law made possible by increased enforcement facilities, the work of this Division has rapidly increased, as evidenced by revenue receipts as shown in the following, through the fiscal year 1962-1963. However, beginning in 1962 the General Assembly for three successive years, passed legislation which reduced license fees for Class D, E and F Certificate holders by twenty-five per cent per year. This reduction is shown in the revenue as collected since that time along with a portion of the motor vehicle registration fees collected by the South Carolina Tax Commission and credited to the Motor Transportation Fund beginning with the fiscal year 1962-1963.

March 10 through December 31, 1928	\$ 15,200.00
Calendar year 1929	20,845.99
Calendar year 1930	39,013.32
Calendar year 1931	57,310.17
Calendar year 1932	57,471.26
Calendar year 1933	63,951.14
Calendar year 1934	81,300.07
Fiscal year 1934-1935	86,060.40
Fiscal year 1935-1936	103,841.91
Fiscal year 1936-1937	155,945.57
Fiscal year 1937-1938	212,950.38
Fiscal year 1938-1939	254,590.53
Fiscal year 1939-1940	250,728.20
Fiscal year 1940-1941	281,796.84
Fiscal year 1941-1942	304,648.97
Fiscal year 1942-1943	387,572.37
Fiscal year 1943-1944	389,184.76
Fiscal year 1944-1945	392,010.25
Fiscal year 1945-1946	403,790.99
Fiscal year 1946-1947	466,040.56
Fiscal year 1947-1948	516,065.26
Fiscal year 1948-1949	547,532.85
Fiscal year 1949-1950	561,256.58
Fiscal year 1950-1951	613,772.53
Fiscal year 1951-1952	647,230.50
Fiscal year 1952-1953	670,693.67
Fiscal year 1953-1954	689,120.74
Fiscal year 1954-1955	691,751.77
Fiscal year 1955-1956	755,682.91
Fiscal year 1956-1957	786,403.41
Fiscal year 1957-1958	770,190.33
Fiscal year 1958-1959	800,455.10
Fiscal year 1959-1960	846,898.69
Fiscal year 1960-1961	841,078.71
Fiscal year 1961-1962	870,505.50
Fiscal year 1962-1963	1,128,437.74
Fiscal year 1963-1964	900,044.65
Fiscal year 1964-1965	707,454.95
Fiscal year 1965-1966	793,226.08
Fiscal year 1966-1967	847,703.71
Fiscal year 1967-1968	895,700.40

Fiscal year 1968-1969	973,913.12
Fiscal year 1969-1970	1,033,553.27
Fiscal year 1970-1971	1,084,739.49
Fiscal year 1971-1972	1,171,000.28
Fiscal year 1972-1973	1,350,164.33
Fiscal year 1973-1974	1,228,220.53
Fiscal year 1974-1975	1,492,578.42
Fiscal year 1975-1976	1,508,338.54
Fiscal year 1976-1977	1,627,335.19

ENFORCEMENT AND SAFETY

1976 - 1977

The enforcement of the Motor Vehicle Carrier Law of the State, Sections 58-1401 through 58-1501 of the *South Carolina Code of Laws, 1962*, as amended, is carried out by the staff of thirty-six Inspectors stationed throughout the State. During the Fiscal Year 1976-1977, these Inspectors made a total of 4,518 arrests with a total of \$123,105 in fines.

All of the Inspectors are certified by the South Carolina State Law Enforcement Division, and all have attended or will have attended in the near future the South Carolina Police Academy as required by law. They wear uniforms and patrol in marked cars with two-way radios. Their duties and responsibilities are to insure that the motor carriers under the jurisdiction of the Public Service Commission comply with the *South Carolina Motor Vehicle Carrier Law* and the Commission's *Rules and Regulations Pertaining to Motor Carriers*. The Inspectors investigate suspected violations, issue warrants of arrest, initiate legal proceedings for violations, and work with the regulated carriers and with the public in helping them comply with the law. The Inspectors made 3,110 regulatory arrests with \$89,385 in regulatory fines during the fiscal year.

The Commission's Safety Program was started in 1971, and we now have nine Safety Inspectors who specialize in safety work stationed throughout South Carolina. They conduct safety surveys of motor vehicles on highways and at terminals of for-hire carriers, express companies and bus lines. During the Fiscal Year 1976-1977, the Safety Inspectors made 8,056 safety inspections from which 162 vehicles were placed out-of-service, and 1,408 safety arrests were made with \$33,720 in safety fines.

COMPARATIVE ARREST REPORT

Fiscal Year	Regulatory Arrests	Amount in Regulatory Fines	Safety Inspections	Safety Arrests	Amount in Safety Fines	Total Arrests (Regulatory and Safety)	Total Amount in Fines (Regulatory and Safety)
1973-1974	3,018	\$80,400	1,751	371	\$ 8,850	3,389	\$ 89,250
1974-1975	2,015	\$58,089	3,300	570	\$14,315	2,585	\$ 72,404
1975-1976	2,271	\$67,895	3,895	740	\$18,505	3,011	\$ 86,400
1976-1977	3,110	\$89,385	8,056	1,408	\$33,720	4,518	\$123,105

1976 - 1977 FISCAL YEAR

SAFETY REPORT

Month	Safety Inspections	Out of Service Vehicles	Safety Arrests	Amount In Fines
JULY, 1976	455	2	37	\$ 915
AUG., 1976	711	16	85	\$ 2,220
SEPT., 1976	804	21	206	\$ 4,015
OCT., 1976	657	15	95	\$ 2,075
NOV., 1976	556	4	86	\$ 2,200
DEC., 1976	466	12	84	\$ 2,225
JAN., 1977	571	7	97	\$ 2,490
FEB., 1977	799	10	113	\$ 2,835
MARCH, 1977	849	26	185	\$ 4,625
APRIL, 1977	784	9	146	\$ 3,220
MAY, 1977	716	23	182	\$ 3,350
JUNE, 1977	688	17	142	\$ 3,550
FISCAL YEAR TOTALS	8,056	162	1,408	\$33,720

AUDIT DEPARTMENT ANNUAL REPORT

1976 - 1977

On July 1, 1975, an Audit Department was formed in the Transportation Division. The purpose of this department is to perform audits of regulated carriers operating within South Carolina to see that the carriers are operating in accordance with the Rules and Regulations of the Commission.

During the fiscal year ending June 30, 1977, 127 audits were performed as follows:

1. Scope of operations and rate compliance audits112
2. Rate increase application audits 15

Violations of the Commission's Rules and Regulations found during audits are turned over to the Enforcement Department. There were 71 violations reported to the Enforcement Department this year.

ANNUAL REPORT FOR RAILS AND TARIFFS DEPARTMENT

The personnel of the Rails and Tariffs Department handles and investigates all applications and cases involving rates, fares, charges, practices, services and facilities of the regulated transportation companies in South Carolina. The Chief of this Department prepares, reports and final orders for the Commission. He also serves as the State program coordinator for conducting the investigative and surveillance activities in connection with the railway track standards prescribed by the Federal Railroad Safety Act of 1970.

The Rails and Tariffs Department supervises and maintains a current file of freight, passenger and express tariffs and makes analyses and studies necessary for the Commission's general supervision of the regulated transportation companies. All regulated transportation companies are required to file and receive approval of the Commission for Tariffs setting forth all rates, charges, classification, rules, regulations and practices for South Carolina intrastate transportation. The tariff file contains approximately 1,424 current tariffs for which approximately 11,500 supplements and reissues are received annually.

All cases requiring a public hearing are handled on the Commission's Formal Docket. Such cases result from protests filed by interested parties against petitions or applications by the various regulated carriers seeking authority to discontinue or change an existing service; complaints or protests filed against existing or proposed rates, fares, charges or practices of such carriers; investigations instituted by the Commission upon complaint or its own motion. Formal docket cases concluded during the 1976 fiscal year were divided as follows:

Railroad	5
Motor Vehicles	13

—
18 Total Formal Docket Cases

In some cases, matters may be settled or adjusted informally, without the necessity of a public hearing, and are handled on the Commission's Informal Docket. Such cases generally involve discontinuance or abandonment of certain minor services or facilities which have become obsolete or for with little, if any, public need continues to exist; such as spur tracks, sidings, removal of old or unused depot buildings at non-agency stations and other like matter, where no

protests nor objections are made by interested parties after due notice has been given. Informal Dockets concluded during the 1976 fiscal year are divided as follows:

Railroad	175
Motor Vehicle	290

465 Total Informal Cases

The South Carolina Railroads are assessed for the support of the Rails and Tariffs Department. For the Fiscal Year ending June 1977, the Railroads were assessed \$47,812.

Healthy competition continues to exist between and within most modes of transportation, with each concentrating their efforts upon the type and nature of traffic each is inherently suited to handle. Continued efforts are being made by the transportation companies to keep abreast of new and improved operating equipment and service facilities which are designed to provide the public with improved equipment and efficient service at reasonable rates and charges.

RAILWAY OPERATING REVENUES, OPERATING EXPENSES AND OPERATING RATIOS

For Year Ending December 31, 1976

Reporting Company	Operating Revenue	Operating Expenses	Operating Ratio
Olinchfield Railroad	\$ 50,182,000	\$ 31,496,000	62.78
Columbia, Newberry & Laurens Railroad	3,527,025	1,514,689	42.94
Greenville & Northern Railway	266,914	250,584	105.23
Hampton & Branchville Railroad	235,712	221,187	93.83
Lancaster & Chester Railroad	728,150	511,885	70.30
Norfolk Southern Railway	32,286,000	23,972,000	74.25
Pickens Railroad	1,980,830	1,642,849	82.93
Rockton & Rion Railway ⁰	—	—	—
Seaboard Coast Line Railroad	728,435,000	549,107,000	75.33
Southern Railway	654,581,000	488,912,000	74.69
Ware Shoals Railroad	67,783	68,608	101.22

* The Rockton & Rion is a Common Carrier by Railroad in South Carolina Intrastate Commerce Only.

Operating Ratios are percentages relationship of Operating Expenses to Operating Revenues. Figure shown are for operations in State and Interstate Commerce.

RAIL INCOME
Year Ending December 31, 1976

Name of Reporting Company	Net Railway Operating Income	Net Income After Fixed Charges & Other Deductions
Clinchfield Railroad	\$12,739,000	\$ See note (1)
Columbia, Newberry & Laurens Railroad	548,742	459,177
Greenville & Northern Railway	(73,207)	13,192
Hampton & Branchville Railroad	(27,808)	(34,674)
Lancaster & Chester Railroad	(22,913)	233,588
Norfolk Southern Railway	3,051,000	2,164,000
Pickens Railroad	601,544	364,581
Rockton & Rion Railway	(3,389)	(4,994)(2)
Seaboard Coast Line Railroad	56,397,000	85,373,000
Southern Railway	72,586,000	92,549,000
Ware Shoals Railroad	(4,997)	(3,633)

NOTE (1) (Clinchfield Railroad)

The Clinchfield Railroad Company is the operating Company for Lessees:
Seaboard Coast Line Railroad Company
Louisville and Nashville Railroad Company

Its Income after fixed charged and other deductions is transfered to Lessees. Income Account for the Year 1976 shows \$9,298,000 as "Income Transferred to other Companies".

NOTE (2) Rockton and Rion is a South Carolina Intrastate Carrier Only.

RAILWAY TAX ACCURALS
Year Ending December 31, 1976

Railroad	Total Railway Tax Accruals	All U.S. Govt. Taxes	South Carolina Taxes
Clinchfield Railroad	\$ 5,270,000	\$ 2,897,000	\$ 72,000
Columbia, Newberry & Laurens R.R.	698,514	542,116	156,397
Greenville & Northern Railway	49,723	32,560	17,163
Hampton & Branchville Railroad	35,904	26,144	9,760
Lancaster & Chester Railroad	211,489	163,070	48,399
Norfolk Southern Railway	3,288,000	2,596,000	\$4,000
Pickens Railroad	224,575	17,440	83,154
Rockton & Rion Railway	407	—	407
Seaboard Coast Line Railroad	68,263,000	54,497,000	2,286,000
Southern Railway	66,808,000	50,066,000	2,069,000
Ware Shoals Railroad	6,267	—	6,267

U. S. Government Taxes include income, old age, retirement, unemployment, insurance and other United States Taxes.
South Carolina Taxes include income, property, sales, gross receipts and licene taxes.

**MILEAGE OF ROAD OPERATED IN
SOUTH CAROLINA**

(Single or First Main Track)

Year Ending December 31, 1976

Name of Railroad	Number of Miles
Olinchfield Railroad Co.	18.02
Columbia, Newberry & Laurens Railroad Co.	74.85
Greenville & Northern Railway Co.	14.00
Hampton & Branchville Railroad Co.	17.00
Lancaster & Chester Railroad Co.	28.99
Norfolk Southern Railway Co.	58.48
Pickens Railroad Co.	9.30
Rockton & Rion Railway Co.	12.00
Seaboard Coast Line Railroad Co.	1,765.84
Southern Railway Co.	999.65
Ware Shoals Railroad Co.	5.17
Total	3,003.28

MILES OF ROAD AND YARD SWITCHING TRACKS

(All Tracks)

Year Ending December 31, 1976

TERMINAL COMPANIES

Name of Terminal Company	Number of Miles
North Charleston Terminal Company	19.00
South Carolina Public Railways Commission	10.99
Spartanburg Terminal Company	1.00
Total	30.99

RAILROAD COMPANIES OPERATING IN SOUTH CAROLINA

December 31, 1976

Line Haul Companies	Principal Officers	Official Address
Olinchfield Railroad Co.	T. D. Moore, Jr., General Manager	Erwin, Tennessee 37650
Columbia, Newberry & Laurens Railroad Co.	Prime F. Osborn, President	Jacksonville, Florida 32202
Greenville & Northern Railway Co.	S. M. Pinsley, President	Boston, Mass. 02109
Hampton & Branchville Railroad Co.	W. Norris Lightsey, President	Hampton, S. C. 29924
Lancaster & Chester Railway Co.	T. B. Bethea, Jr., President	Lancaster, S. C. 29720
Norfolk Southern Railway Co.	W. Graham Claytor, Jr., President	Washington, D. C. 20005
Pickens Railroad Co.	O. Monroe, President	Pickens, S. C. 29671
Rockton & Rion Railway Co.	D. B. Wendling, President	Rockville, Md. 20850
Seaboard Coast Line Railroad Co.	W. Thomas Rice, President	Richmond, Va. 23219
Southern Railway Co.	W. Graham Claytor, Jr., President	Washington, D. C. 20005
Ware Shoals Railroad Co.	K. E. Wilber, President	Ware Shoals, S. C. 29692
Terminal Companies		
South Carolina Public Railways Commission	W. J. Betz, General Manager	Charleston, S. C. 29402
Spartanburg Terminal Co.	J. B. Clark, President	Jacksonville, Fla. 32202
North Charleston Terminal Co.	Henry R. Moore, President	Atlanta, Georgia 30304

REGISTRATION DEPARTMENT

Registration of Certificated and Exempt Commodity Interstate Motor

Public Law 89-170

South Carolina Code Section 58-1444

On April 16, 1971, the South Carolina Motor Vehicle Carrier Law was amended by adding Section 58-1444 governing the operation of interstate carriers certificated by the Interstate Commerce Commission and exempt commodity carriers. Section 58-1444 authorized the South Carolina Public Service Commission to promulgate rules and regulations pursuant to this Act. The Rules promulgated complied with the standards as recommended and approved by the National Association of Regulatory Utility Commissioners and the Interstate Commerce Commission.

Carriers coming under this category are charged a registration fee of \$25.00, any amendment to the authority as registered \$10.00. Mobile Home Transporters are charged one-half the amendment fee or \$5.00. All trucks operating into or through South Carolina under Section 58-1444 must purchase an identification stamp at \$1.00 per truck.

Under the same Section, all exempt commodity carriers operating into or through South Carolina must file a letter with this Commission setting forth the exempt commodities to be transported. These fees are identical to those of Certificated carriers. All funds derived from such fees and charges are to be retained by the Commission and expended by it to control and police illegal transportation and promote safety on the highway.

During the period of July 1, 1976, through June 30, 1977, 227 Certificated carriers registered their authority with this Commission. Prior registrants were 1,867 making a total of 2,094 registered Certificated carriers. There were 595 registrants of additional authority with this Commission. For the same period 1,681 Exempt

carriers registered their letters of exemption. Prior registrants were 8,284 making a total of 9,965 registered Exempt carriers.

Balance From Previous Years	\$217,428.48
Revenues From Certificated Carriers	\$214,066.00
Revenues From Exempt Carriers	67,248.00
Total Revenue from 7-1-76 through 6-30-77	281,314.00
<hr/>	
Total	\$498,742.48
Expenditures this Division	271,066.09
<hr/>	
Balance carried forward to 1977-1978	\$227,676.39

The enforcement of this Law and check of all trucks on the road for safety purposes are done by Inspectors in the field.