

ENROLLMENT GUIDE

2012-2013



COASTAL CAROLINA
UNIVERSITY

Ready, set, enroll!

New Student Guide to Enrolling in Coastal Carolina University

Congratulations on your acceptance to Coastal Carolina University! You should be very proud of your accomplishments both in and out of the classroom that have led to your acceptance and your decision to pursue a baccalaureate degree. This guide is designed to assist you with the enrollment process at Coastal Carolina University and to ease your transition to college life.

If you or your parents have questions along the way, the Office of Admissions staff is available to assist you. Call us at 800-277-7000, email admissions@coastal.edu, or pose a question on the Coastal Carolina Admissions page on Facebook at www.facebook.com/CoastalAdmissions. We wish you the best that the University has to offer.

THE ENROLLMENT PROCESS

1. PAY YOUR ENROLLMENT FEE

The \$100 enrollment fee holds your place in the class. You must also pay your fee before you can apply for housing or sign up for an Orientation session. To enroll today:

- Go to www.coastal.edu/admissions/deposit.html.
- CLICK on the Enroll Now link.
- ENTER the username you received by letter after you applied to the University and the password you selected during set-up. CLICK Submit. If you have not set up your password, go to www.coastal.edu/search/setup. If you have lost or misplaced this letter, please contact the Office of Admissions at 843-349-2290 or 843-349-2028 (Monday through Friday, 8:30 a.m. to 4:30 p.m.).
- VERIFY that your contact information is correct. If accurate, select the payment type and CLICK Submit. If your contact information is incorrect, please email the corrected information with your name and address to enroll@coastal.edu. You may now proceed by selecting the payment type.
- ENTER your credit card or check information and CLICK Submit.
- PRINT or write down the payment reference number and keep it for your records.

Please pay your enrollment fee no later than May 1, 2012, if you are planning to attend for the fall semester. We will be glad to accept your fee prior to May 1. If you decide not to attend Coastal Carolina University and have paid your enrollment fee, you may request a refund of your enrollment fee by writing to the Vice President for Enrollment Services prior to the appropriate deadline for the term. **No refunds will be honored after these deadlines:**

- **Fall Semester—May 1**
- **Spring Semester—December 15**

2. APPLY FOR UNIVERSITY HOUSING

Just \$150 (\$50 is the application fee and \$100 is the advance housing fee) completes your housing application and gives you priority for assignment to our communities if you submit your application before our June 1, 2012, priority deadline. All first and second-year students are required to live in university-operated housing. Transfer students and students who are married, are veterans, are parents, or live with their own parent or guardian are not required to live in university-operated housing. We highly encourage transfer and local students to consider living with us. We aim to accommodate all other interested students after placing required students. All students who believe they are exempt from the housing requirement must apply for an exemption through the Office of University Housing at www.coastal.edu/housing.

Ready, set, enroll!

COMPLETE YOUR HOUSING APPLICATION CHECKLIST:

- PAY your enrollment fee.
- Go to www.coastal.edu/housing.
- CLICK on the online Housing Application link.
- ENTER your CCU username and CLICK submit. If you have not set up your password, go to www.coastal.edu/search/setup. If you are unsure about your username please contact the Office of Admissions at 843-349-2290 or 843-349-2028 (Monday through Friday, 8:30 a.m. to 4:30 p.m.).
- SELECT the term for which you need housing and CLICK Submit.
- The housing application will appear and you will be asked to CHOOSE your housing and meal plan preferences. After making your selections, CLICK submit.
- ENTER your credit card or check information and CLICK submit.
- PRINT or write down the payment reference number and keep it for your records.

Housing assignments are made on a first-come, first-served basis, and no assignments will be offered until a completed application with the required \$150 housing fee is paid online and the enrollment fee has been received by the Office of Admissions. Application and advance housing fees are not refundable. Requests to change the preferences you submitted in your housing application may only be made until June 1, 2012. Visit the University Housing website (www.coastal.edu/housing/specialrequests) to request a change to your application preferences.

3. SIGN UP FOR ORIENTATION

Orientation is required for all new freshman and transfer students. Additional information about the Orientation program is on page 3. To register for an Orientation session:

- PAY your enrollment fee.
- Go to www.coastal.edu/admissions/orientation.html.
- CLICK on the Register for Orientation link.
- Verify your contact information and select a session date.
- ENTER names of up to two guests and CLICK Submit.
- ENTER your credit card or check information and CLICK Submit.
- PRINT or write down the payment reference number and keep it for your records.

4. RETURN YOUR IMMUNIZATION FORM

Every student entering a South Carolina college or university is required to provide an immunization record prior to enrollment. Please download the Health History/Immunization Form from the Student Health Services' website: http://www.coastal.edu/health/i_requirements.html. Return the completed form to Student Health Services. The completed form is due by August 1 for the fall term and by December 15 for the spring term. If you have any questions regarding immunization requirements, please call Student Health Services at 843-349-6543.

You need to know.

TO ENSURE THAT YOUR ACCEPTANCE TO COASTAL CAROLINA UNIVERSITY REMAINS IN EFFECT, FRESHMEN MUST:

1. Successfully complete the requirements for graduation from an accredited secondary school.
2. Successfully complete the 19 core courses required for admission to Coastal Carolina University.
3. Provide a final official transcript of high school credits prior to enrollment to confirm that Coastal Carolina University prerequisite course requirements have been met. The graduation date must be posted on the transcript.
4. Prior to enrolling at the University, provide an official college transcript if you have received any college credit from another institution.
5. Provide official Advanced Placement (AP) score reports from the College Board if you have AP credit(s).
6. Provide official International Baccalaureate (IB) test scores if you have IB credit(s).
7. Prior to enrolling at the University, provide proof of citizenship or legal presence in the United States.

TO ENSURE THAT YOUR ACCEPTANCE TO COASTAL CAROLINA UNIVERSITY REMAINS IN EFFECT, TRANSFER STUDENTS MUST:

1. Earn a minimum cumulative 2.0 grade point average on all course work taken prior to entering Coastal Carolina University.
2. Ensure that all final, official transcripts are forwarded to Coastal Carolina University as soon as you complete your final semester. Your financial aid, advisement, registration and other aspects of enrollment are affected by your admission status.
3. Prior to enrolling at the University, provide proof of citizenship or legal presence in the United States.

ORIENTATION

Orientation is designed to introduce you to the campus, faculty and staff, and academic programs and policies; allow you to meet and develop friendships with other students; and to help you become familiar with your University. Summer Orientation and Welcome Week are required for all new freshmen. Transfer students are also required to attend Orientation because academic advising and registration occur at this time.

SUMMER ORIENTATION

Summer Orientation sessions for freshmen last two days and take place in June and July. Transfer Orientation sessions are one day and occur in June, July and August. During Orientation, you will meet with your academic dean and department chair and receive your fall class schedule. All new students are required to attend Summer Orientation. Freshman students stay one night in a campus residence hall. There is also a corresponding Orientation program for families that will address their concerns regarding academic requirements, advisement, health and safety, and the many services available to you.

Summer Orientation dates for students enrolling in the fall 2012 semester will be made available by February 1, 2012. You will receive more information on the Orientation program and how to register for an Orientation session at a later date. If you have additional questions regarding Orientation, please call 843-349-2027 or go to www.coastal.edu/admissions/orientation.html.

Please note that the \$100 enrollment fee must be received by the Office of Admissions before you can register for Orientation. Do not make flight reservations or other travel plans until you receive a written confirmation of your Orientation session.

The Freshman Orientation fee is \$140 and includes the cost of meals, session materials and one night lodging (students only) in a University residence hall as well as session materials and lunch for families. The fee allows students to bring up to **two guests**.

The Transfer Orientation fee is \$70 and includes the cost of session materials, lunch and other items. The fee allows students to bring up to **two guests**.

Orientation fees are non-refundable.

You need to know.

WELCOME WEEK

Welcome Week begins on move-in day, and consists of several days of fun and educational activities designed to welcome new students to the University and help them make a successful transition. As part of the First-Year Experience, Welcome Week features The Big Read; New Student Convocation; social events; residence hall meetings; and presentations on campus involvement, academic expectations, student services and more. All new freshmen are required to attend Welcome Week.

TUITION PAYMENT

If you advance register at Orientation prior to August 2, 2012, tuition payment will be required prior to the start of the fall semester to guarantee your enrollment. Failure to pay on the appropriate deadline will result in the cancellation of your course schedule. For payment deadlines, go to www.coastal.edu/studentaccounts.

Students have the ability to provide authorization to parents and guardians for tuition billing information by granting access through WebAdvisor on the Student Menu at "Allow WebAdvisor for Parents & Guardians."

All student bills are posted online and updated in real-time with any changes to financial aid, student registration, housing and payments. See the Office of Student Accounts calendar at www.coastal.edu/studentaccounts/calendar.html for bill availability and payment deadlines.

INSTALLMENT PAYMENT PLAN

Coastal Carolina University offers a three-payment Installment Payment Plan to assist students in paying for the cost of attendance. The student's balance is divided, after financial aid is applied, into three equal installments (Example: Aug. 1, Sept. 1, Oct. 1). A small set-up fee must be paid with the first installment. Additional information on the Installment Payment Plan is available from the Office of Student Accounts, by calling 843-349-2245, or at www.coastal.edu/studentaccounts/tuition.html.

EXPENSES

Per Semester Cost Based on 2011-2012 Rates	South Carolina Resident	Out-of-State Resident
*Tuition (full-time student = 12 to 18 credits)	\$4,880	\$10,780
*On-campus Room and Board (standard room)	\$3,850	\$3,850

Note: Other fees may be applicable based on course schedule and student activities. See www.coastal.edu/studentaccounts/fees.html for other fees and updates to fee schedules.

**These expenses are subject to change for the 2012-2013 academic year. Room and Board costs are based on a double occupancy room on the main campus.*

STUDENT AUTHORIZED THIRD-PARTY ACCESS TO BILLS AND EMAIL NOTICES

Parents or other third parties may be provided secure access to student billing and payment processes by the student. Student authorization is required for third-party access. With access, email notifications related to billing will be issued to the third party and student. For more information, see www.coastal.edu/studentaccounts/webparent.html.

Financial Aid & Scholarships, etc.

FINANCIAL AID AND SCHOLARSHIPS

THE THREE TYPES OF FINANCIAL AID:

1. Grants and Scholarships - Financial gifts that normally do not need to be repaid.
2. Loans - Borrowed funds that must be repaid.
3. Federal College Work-Study and Institutional Work-Study Programs that provide on-campus employment opportunities that enable students to earn a portion of their educational expenses.

**Note: The total of all scholarships and financial aid awards cannot exceed the cost of attendance as determined by the Financial Aid and Scholarships (FAS) office.*

UNIVERSITY SPONSORED SCHOLARSHIPS

Coastal Carolina University is committed to the highest standards of academic excellence and recognizes accomplished freshman and transfer students through its merit-based and application-based scholarship programs.

Freshman applicants admitted to the University are automatically considered for the following merit-based scholarships: President's Scholarship, Provost's Scholarship, and Coastal Scholar Freshman Award (criteria for each of these awards follows). Students admitted by January 1 will receive priority consideration for the University's merit-based scholarships.

Scholarships are awarded for the academic year beginning with the fall semester (exception for spring-entering recipients). To receive a University scholarship, a student must be enrolled full-time (minimum of 12 credit hours). Awards range from \$1,000 to \$11,000 (based on 2011 recipients). Merit-based scholarships awarded to freshmen are renewable for up to a total of four years of full-time study at Coastal Carolina University (maximum of eight semesters), provided the renewal criteria are met each year by the recipient. Freshmen will be notified prior to April 15 if they have qualified for a merit scholarship.

Transfer applicants admitted to the University are automatically considered for the Coastal Scholar Transfer Award, provided funding is available. All transcripts from secondary institutions must be received by June 1 for priority consideration. Scholarships are awarded for the academic year beginning with the fall semester (exception for spring-entering recipients). To receive a Coastal Scholar Transfer Award, a student must be enrolled full-time (minimum of 12 credit hours).

As there are a limited number of scholarships available (contingent upon available funding) in each category, not all students who meet the minimum criteria will be awarded a scholarship. Eligible students are encouraged to apply for admission early in order to receive priority scholarship consideration.

All scholarship recipients are required to complete the Free Application for Federal Student Aid (FAFSA) in order for FAS to determine an accurate cost of attendance for each student. The total monetary value for all scholarships and financial aid awards cannot exceed the cost of attendance as determined by FAS.

For additional information concerning scholarships, call 843-349-2308, visit CCU's website at www.coastal.edu/financialaid/scholar.html or email scholar@coastal.edu.

Note: Students may only receive financial assistance from **one of the following sources: President's, Provost's, Coastal Scholar Freshman, Coastal Scholar Transfer, Admissions Scholar, Phi Theta Kappa, PGM Scholarship Program, or the Academic Common Market. Out-of-state students may not receive tuition waiver(s) for more than the difference between in-state and out-of-state tuition costs.*

Financial Aid & Scholarships, etc.

PRESIDENT'S SCHOLARSHIP

In-state freshmen earning the President's Scholarship receive a \$4,000 annual scholarship. To qualify, admitted students must present a minimum cumulative high school GPA of 3.5 and a minimum SAT (critical reading and math combined) of 1,250 or composite ACT of 27.

Out-of-state freshmen earning the President's Scholarship receive a \$7,500 annual scholarship. To qualify, admitted students must present a minimum cumulative high school GPA of 3.5 and a minimum SAT (critical reading and math combined) of 1,300 or composite ACT of 29.

PROVOST'S SCHOLARSHIP

In-state freshmen earning the Provost's Scholarship receive a \$2,000 annual scholarship. To qualify, admitted students must present a minimum cumulative high school GPA of 3.5 and a minimum SAT (critical reading and math combined) of 1,200 or composite ACT of 26.

Out-of-state freshmen earning the Provost's Scholarship receive a \$6,500 annual scholarship. To qualify, admitted students must present a minimum cumulative high school GPA of 3.5 and a minimum SAT (critical reading and math combined) of 1,200 or composite ACT of 26.

COASTAL SCHOLAR FRESHMAN AWARD

In-state freshmen earning the Coastal Scholar Freshman Award receive a \$1,000 annual scholarship. To qualify, admitted students must present a minimum cumulative high school GPA of 3.5 and a minimum SAT (critical reading and math combined) of 1,100 or composite ACT of 24.

Out-of-state freshmen earning the Coastal Scholar Freshman Award receive a \$4,000 annual scholarship. To qualify, admitted students must present a minimum cumulative high school GPA of 3.5 and a minimum SAT (critical reading and math combined) of 1,150 or composite ACT of 25.

PERFORMANCE AWARDS

Students fully admitted into the B.A. Music program, the B.F.A. Theatre Arts or Musical Theatre program, the B.A. Graphic Design program, or the B.A. Art Studio program may be eligible for a \$1,000 - \$4,000 annual performance award. Faculty recommendation for this award is based upon an audition or portfolio review within the applicable program. Funding is limited.

COASTAL SCHOLAR TRANSFER AWARD

In-state transfers earning the Coastal Scholar Transfer Award receive a \$1,000 - \$1,500 annual scholarship. To qualify, admitted students must have earned a minimum of 30 transferable credit hours from their previous institution(s). Admitted students who present a minimum cumulative collegiate GPA of 3.25 – 3.49 receive \$1,000 annually. Admitted students who present a minimum cumulative collegiate GPA of 3.50 – 4.00 receive \$1,500 annually.

Out-of-state transfers earning the Coastal Scholar Transfer Award receive a \$4,000 - \$6,500 annual scholarship. To qualify, admitted students must have earned a minimum of 30 transferable credit hours from their previous institution(s). Admitted students who present a minimum cumulative collegiate GPA of 3.25 – 3.49 receive \$4,000 annually. Admitted students who present a minimum cumulative collegiate GPA of 3.50 – 4.00 receive \$6,500 annually.

PHI THETA KAPPA SCHOLARSHIP

The Phi Theta Kappa (PTK) Scholarship is a \$1,000 award conferred annually to four (4) admitted transfer students on a first-apply, first-receive basis. To qualify, admitted transfers must have earned a minimum of 30 transferable credit hours from their previous institution(s), present a minimum cumulative collegiate GPA of 3.0, and submit documentation of active membership in PTK to the Office of Financial Aid & Scholarships. (Recipients of a Coastal Scholar Transfer Award may not receive a PTK Scholarship).

APPLICATION-BASED SCHOLARSHIPS

Coastal Carolina University offers additional application-based scholarships that are awarded to eligible newly admitted and current students. These awards are based on overall high academic achievement, financial need, community service, and/or leadership. Specific criteria for each award are listed in the

Financial Aid & Scholarships, etc.

Application-based Scholarship Guide that is available on the web at www.coastal.edu/financialaid/scholar.html, typically in early December each year.

To be considered for application-based scholarships as a new freshman or transfer student, you must be admitted to Coastal Carolina University and submit a completed 2012-2013 Scholarship Application via WebAdvisor by March 1, 2012.

The Financial Aid Application Process

Through student financial aid programs, Coastal Carolina University makes every effort to assist students in financing their education. All students interested in receiving Title IV financial assistance, including all Coastal Carolina University academic scholarships, are to do the following:

1. Complete the Free Application for Federal Student Aid (FAFSA) form.

Collect and prepare 2011 IRS tax returns (student and, in most cases, parent) as soon as possible. Be sure to keep a copy of the federal tax returns for your records. Complete and submit the 2012-2013 FAFSA using the 2011 federal tax returns. To ensure quicker processing, apply online. You will need a PIN number, which you and one parent can apply for at www.pin.ed.gov. Upon receipt of this PIN number, you may then complete the FAFSA online at www.fafsa.gov. Coastal Carolina University's school code is 003451. If you need assistance, call 800-4FED-AID or call CCU at 843-349-2313.

2. Provide additional information as requested.

Some students are selected by the federal government for a process called "verification." If selected for verification, you will be asked to provide additional information such as a signed copy of the student's and the parent's federal income tax returns.

3. The FAFSA is required for a Federal Stafford loan.

To apply, go to www.coastal.edu/financialaid/loanstaff.html.

Most loans take a minimum of six weeks to process before loan proceeds are available to the student. Important note: The entire Financial Aid Application process must be completed for each year in which financial assistance is required.

4. To apply for a Federal Parent PLUS loan or a private loan, please go online to www.coastal.edu/financialaid/loanstaff.html.

FINANCIAL AID AWARD NOTIFICATION

A financial aid award cannot be made until a student is fully admitted as a degree-seeking student to Coastal Carolina University and has completed the entire financial aid application process. The amount of financial assistance available to a student is based on the difference between the student's cost of attendance (educational and reasonable living expenses) and the student's estimated family contribution (as determined by federal methodology through the FAFSA).

Financial aid awards for the academic year are made beginning in March for students who have completed the entire financial aid application process. Once this process is complete, students can access their financial aid awards on Student WebAdvisor at webadvisor.coastal.edu by using the username and password they were issued upon applying to the University. All revisions will be sent through Coastal Carolina University email available at <http://mail.coastal.edu>.

PROGRAMS OF FINANCIAL AID

While it isn't possible to provide a complete listing of all forms of financial aid that are available to Coastal Carolina University students, the major types of federal and South Carolina financial aid are:

• FEDERAL PELL GRANTS

Awards made by the federal government to undergraduate students who have exceptional financial need as determined by federal government methodology. The maximum award for the 2011-2012 grant award year was \$5,550. This amount is set by Congress annually.

Financial Aid & Scholarships, etc.

• FEDERAL SUPPLEMENTAL EDUCATIONAL OPPORTUNITY GRANTS

Awards made by the institution from limited federal funds to undergraduate students who have exceptional financial need as determined by the federal government. Since funding by the federal government for this grant is limited, not all eligible students will receive this award. Students who complete the financial aid application process early will be considered first for these funds. Eligible students are typically awarded \$500-\$1,500 per year (based on level of need).

• FEDERAL COLLEGE WORK-STUDY (CWS)

A CWS Award will be made by the institution, utilizing limited federal funds, for students with demonstrated need as determined by the federal government. Students are paid an hourly wage and receive paychecks bi-monthly. Typically, Coastal Carolina University students who receive a CWS Award under this program work nine to 16 hours a week. Since funding by the federal government for this program is limited, not all eligible students will receive a CWS Award. Students who have completed the financial aid application process early will be considered first for the CWS Awards. All student jobs are posted on the Human Resources website at www.coastal.edu/hreo/workplace/studentjobs.

• TEACH GRANT

The Teacher Education Assistance for College and Higher Education (TEACH) Grant Program provides up to \$4,000 per year to undergraduate and graduate students. In exchange for receiving a TEACH Grant, the student must agree to serve as a full-time teacher in a high-need field in an elementary or secondary school that serves low-income students for at least four years within eight calendar years of completing the program of study. If a student fails to complete this service obligation, all TEACH Grants received will convert to a Federal Direct Unsubsidized Stafford Loan.

• FEDERAL DIRECT STAFFORD STUDENT AND PARENT LOANS

These loans are supported by the federal government. Eligibility for these loans is certified by the institution the student is attending. The student must be enrolled at least half-time (six credit hours) to receive a loan. Lending limits for these loans are based on a student's class level. Complete the FAFSA to apply. A master promissory note and entrance loan counseling are required. Please visit www.coastal.edu/financialaid/loanhome.html for instructions.

The annual limits are as follows:

	DEPENDENT STUDENTS	HOURS	INDEPENDENT STUDENTS
FRESHMEN	\$5,500	0-29	\$9,500
SOPHOMORES	\$6,500	30-59	\$10,500
JUNIORS	\$7,500	60-89	\$12,500
SENIORS	\$7,500	90+	\$12,500

Fixed Interest Rate: 3.4 percent (subsidized) and 6.8 percent (unsubsidized)

Term of Loan: Up to 10 years

The fees for these loans and the repayment terms depend on the type of loan the student receives.

Subsidized Stafford Loans

To qualify: A student must demonstrate financial need as determined by the federal government.

Repayment: The government pays the interest while the student is enrolled at the institution and for six months following graduation, withdrawal or less than half-time enrollment. The student then becomes responsible for repaying the loan.

Unsubsidized Stafford Loans

To qualify: A student does not have to demonstrate financial need.

Repayment: The federal government does not pay the interest while the student is enrolled at the institution. The student can either pay the interest while in school or allow it to accrue until graduation, withdrawal or less than half-time enrollment and then start repaying the loan including all accrued interest.

Financial Aid & Scholarships, etc.

Federal Plus Loans

PLUS (Parent Loan for Undergraduate Students) is a federal loan program for parents of dependent students who need to borrow funds to assist their students with educational expenses. A parent may borrow up to the cost of attendance (educational and reasonable living expenses) minus other estimated financial resources that are available to the student. The parent must meet established credit criteria to receive a loan. To apply, go to www.coastal.edu/financialaid/loanplus.html.

Fixed Interest Rate: 7.9 percent

Repayment: Begins 60 days after final loan disbursement of the loan period.

Term of Loan: 10 years

FINANCIAL AID AVAILABLE TO SC STUDENTS

SOUTH CAROLINA NEED-BASED GRANTS PROGRAM

Awards are made by the institution from limited funds to undergraduate students who have demonstrated need as determined by the federal government. Students who complete the University's financial aid application process early will be considered first for these funds. The FAFSA must be completed.

PALMETTO FELLOWS, PALMETTO LIFE & SOUTH CAROLINA HOPE SCHOLARSHIPS

These programs are administered by the South Carolina Commission on Higher Education and are merit-based scholarship programs. Coastal Carolina University will notify all students who meet eligibility criteria for these scholarships. Please contact your high school counselor for the latest information or updates on these scholarships or visit www.che.sc.gov.

SOUTH CAROLINA TEACHER'S LOAN

Students must be education majors. Loans are repaid by the state if students teach in a critical needs school and/or a critical subject area in South Carolina. Contact Financial Aid and Scholarships at CCU for an application and additional information or visit www.scstudentloan.org. Areas of critical need are determined annually by the S.C. Department of Education.

PAYMENT OF FEES

The student must pay the amount due for tuition, fees, and room and board prior to the beginning of each term. Most scholarships, grants or loans which are awarded, except work-study, are credited to the student's account after the student has started attending classes at Coastal Carolina University. The student must pay the balance to the Office of Student Accounts if the financial aid award is not sufficient to cover the amount due.

QUESTIONS ABOUT FINANCIAL AID?

If you have questions concerning financial aid at Coastal Carolina University, contact the FAS office at 843-349-2313. The office hours are 8:30 a.m. to 4:30 p.m., Monday through Friday. Email: finaid@coastal.edu. Most questions can be answered by visiting our website: www.coastal.edu/financialaid.

RESIDENCY FOR TUITION AND FEE PURPOSES

Upon your admission to Coastal Carolina University, your residency status for tuition and fee purposes was established and conveyed to you in your admission letter. Once residency is established, you may ask for a review of your status by completing the Application for Classification as a South Carolina Resident (Domiciliary) for Tuition and Fee Purposes. The deadline for completing and returning your Residency Application and documentation that supports your claim for in-state tuition is three weeks prior to the beginning of the term for which you are requesting residency. Only completed forms with all documentation will be reviewed. If you have any questions regarding residency for tuition and fee purposes, new students should contact the Office of Admissions at 843-349-2151 and continuing students should contact the Office of the Registrar at 843-349-2019.

Campus Living

University Housing

Coastal Carolina University maintains 56 residence halls, which house approximately 3,400 students in nine different communities. Accommodations range from apartment-style to traditional semi-suite style living. Students living in the residence halls are required to participate in one of the meal plans available from Campus Dining Services. All residence halls have central heat/air conditioning, cable television hookups and Internet connections. Housing agreements extend for an entire academic year (fall and spring semesters). Each area is staffed by a Resident Director (RD) and Resident Assistants (RAs), who serve as information resources, community builders and mediators.

Living in university-operated housing is one of the most important parts of the Coastal Carolina University student experience. During the first two years as a student at CCU, residents are members of a fun and vibrant community of learners focused on their safety and success. All first and second-year students are required to live in university-operated housing (for more information on exemptions to the housing requirement please visit www.coastal.edu/housing).

Traditionally, students spend more time in their residence halls than anywhere else on campus and are more likely to find success and continue their pursuit of higher education if they live in residence halls. In their new homes, students are challenged, supported and educated by the natural diversity and daily exchange that surrounds them. By living in university-operated housing, students will join others who are expanding their learning experiences beyond the classroom. Students have the opportunity to make new friends, develop an appreciation and respect for differences, and learn important skills that will help them in their personal and professional relationships throughout their lives.

As students move into the residence halls, they are encouraged to make their halls their homes and not just places where they sleep after classes. Students can do this in two ways: by personalizing their spaces with pictures and posters, and by becoming active and positive members of their communities. Creating a home takes time and effort, but the team of professional and student staff in University Housing offers students many opportunities to be involved in healthy and fun communities that foster living and learning skills as well as creative and critical thinking. Students can make connections in their residential environment by participating in the Residence Hall Association (RHA) and through Foundations Initiative programming including Cornerstone, which is University Housing's comprehensive approach to forming the all-important connections between residents during the first six weeks of the academic year.

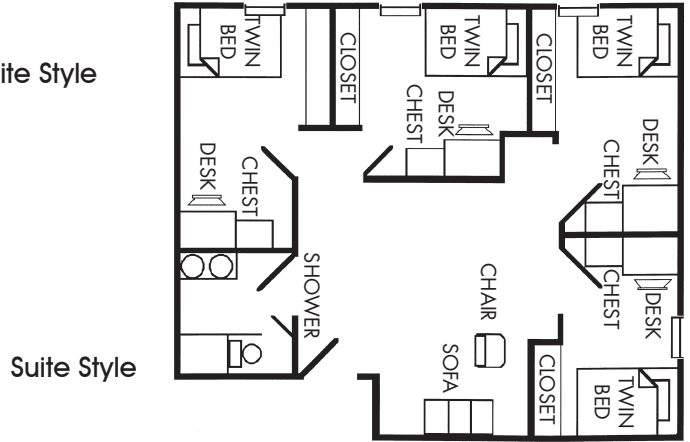
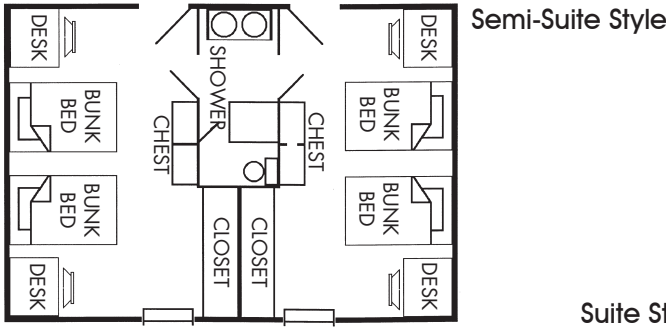
RESIDENCE LIFE OPTIONS

RONALD R. INGLE AND RONALD G. EAGLIN HALLS

Ingle Hall houses approximately 400 students and Eaglin Hall houses approximately 350 students; both communities are reserved for first-year students only. Both halls offer traditional semi-suite and suite-style rooms. The majority of the rooms in both halls are in semi-suites, which consist of two bedrooms connected by a semi-private bathroom. Five residents, two on one side of the semi-suite and three on the other, share the adjoining bathroom. Each room is furnished with an extra-long twin bed, a desk and chair, and a dresser for each resident. Additionally, there are a limited number of suites where four students share a bathroom and common living area, but have single, or private, bedrooms. Each of these suites is furnished with a bed, a desk and chair, a dresser, plus a common area sofa. Both Ingle and Eaglin halls are wired for direct Internet access. An all-you-care-to-eat dining facility is located between these two residence hall buildings.

Campus Living

Ronald R. Ingle and Ronald G. Eaglin Halls



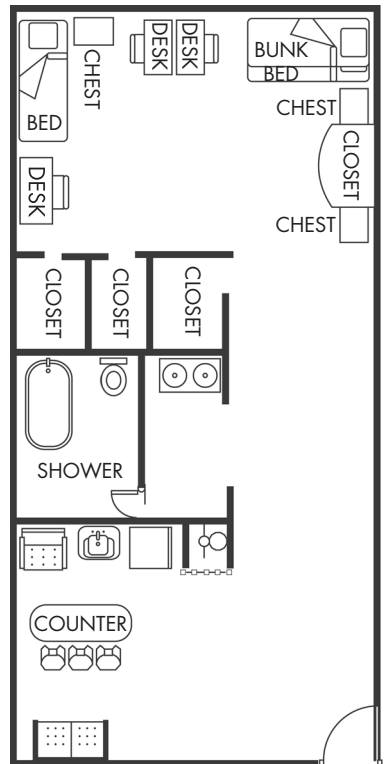
AZALEA AND MAGNOLIA HALLS

Azalea and Magnolia halls are suite-style efficiency units that accommodate approximately 140 students in total. Each unit accommodates three students who share one large bedroom. Each apartment is furnished with a refrigerator, sofa, kitchen counter, stools, extra-long twin beds, three desks and chairs, three chests of drawers, closet space and a bathroom. In addition, units in these halls also have a full-size stove and wireless Internet access.

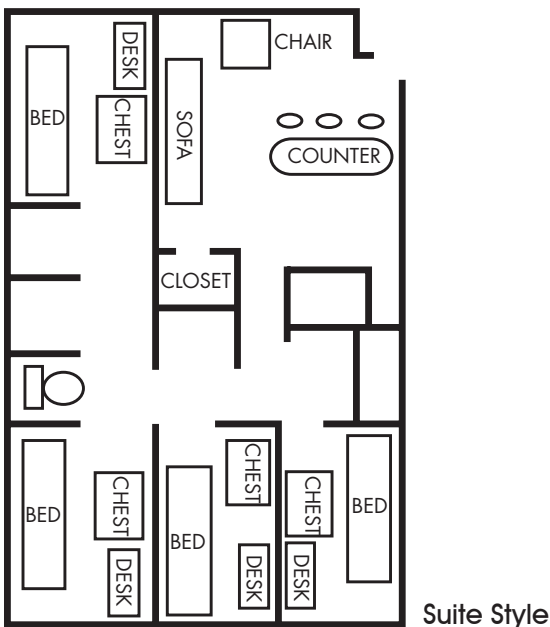
DOGWOOD, OAK, CYPRESS, ELM, MAPLE AND PALMETTO HALLS

Dogwood, Oak, Cypress, Elm, Maple and Palmetto halls are suite-style living units accommodating approximately 400 students open to first-year students. Each suite offers three or four single occupancy, or private, bedrooms off of a common room and shared bathroom and is wired for direct Internet access. In addition, each suite also is furnished with a refrigerator, sofa, bar stools, extra-long twin beds, desks, chairs, chests of drawers and built-in closet space.

Azalea and Magnolia Halls



Dogwood, Oak, Cypress, Elm, Maple & Palmetto Halls



Campus Living

UNIVERSITY PLACE APARTMENTS

All University Place (UP) Apartment units open into a common open-air hallway. One, two, three and four-bedroom apartments offer single occupancy and double occupancy bedrooms. Each of the bedrooms has a bed (full beds in single rooms and extra-long twin beds in double rooms), a chest of drawers, a desk and chair for each resident and one closet. The living room has a sofa and TV stand. The kitchen has a full-size refrigerator, microwave, dishwasher and stove and each unit also has a washer and dryer.

University Place Apartments are conveniently located one-half mile from campus. UP houses approximately 2,200 students in 46 apartment-style buildings. There are two activity houses, each equipped with an exercise and fitness center, outdoor pool, hot tub and social/lounge room with a wide screen plasma TV. In addition, UP also features basketball and volleyball courts, air hockey and foosball tables, outdoor grills and plenty of picnic tables.

University Place Apartments



Two Bedrooms



Four Bedrooms

HOUSING FEES

Housing fees vary based on the building, or community, and bedroom type you are assigned. Triple rooms, whether temporarily or permanently assigned, are always the least expensive. Double rooms are an excellent option for most students, and single bedrooms are available on a first-come, first-served basis and are the most costly option. A complete list of current housing rates is available at www.coastal.edu/studentaccounts/fees.html. Please keep in mind that rates are set by the Coastal Carolina University Board of Trustees and Student Housing Foundation Board of Directors during the spring semester of each year for the following year. The 2012-2013 housing rates will be made available as soon as possible.

LIVING LEARNING COMMUNITIES

Coastal Carolina University offers a number of living learning communities. These communities allow students who share a common interest to live and learn together. These communities are partnerships between University Housing and Student Affairs offices or academic departments designed to provide students who elect to participate greater access to each other and faculty and staff in the partner area. Students wishing to participate can select a living learning community in their housing application or indicate that they have no preference.

RESIDENCE HALL ASSOCIATION (RHA)

The Residence Hall Association (RHA) provides student leaders in the residence halls yet another opportunity to get involved and, most importantly, serves as the official voice of residents living in university-operated housing. RHA puts on student-led activities, makes policy recommendations, and operates a large programming budget. RHA leaders are elected each year to be representatives of their communities for the academic year and to promote good academic performance and behavior.

Campus Living

RESIDENCE HALL STAFF

RESIDENT DIRECTORS

Resident Directors (RDs) are professional staff members who serve as mentors and administrators in the residence halls. Each RD supervises a team of student staff members called Resident Assistants. RDs are responsible for working collaboratively with residents and staff to foster the safety and success of the entire residence hall community. RDs live in their community alongside residents and remain accessible beyond the normal business day to assist students with a variety of academic and personal issues.

RESIDENT ASSISTANTS AND ASSISTANT RESIDENT DIRECTORS

Resident Assistants (RAs) are upperclassmen who live in the residence halls and work for University Housing offering a wide range of services to students. RA responsibilities include providing fun and educational programs, enforcing policies, designing bulletin boards, helping residents adjust to the college experience, and serving in an on-call capacity during the evenings and weekends. RAs serve in one of the premier student leadership positions on campus and are asked to be peer role models and resources for all residents and students. Assistant Resident Directors (ARDs) are experienced student staff members who serve as liaisons between the RAs and RDs. Like RAs, an ARD is always on-call to help residents.

DESK ASSISTANTS

Desk Assistants (DAs) are student staff working in each community as resources for residents needing assistance with a lock-out, maintenance request, or getting information about University Housing and any other campus office. Community desks are open late into the evening to provide residents assistance on their schedules. Most importantly, DAs are asked to observe and report safety and security concerns within their community.

MAINTENANCE TECHNICIANS AND CUSTODIANS

Each community is served by professional maintenance and custodial staff. These staff members work collaboratively with the resident students and staff to maintain safe, clean, and comfortable facilities designed to achieve academic and personal success. Maintenance and custodial staff are critical members of the residence hall community without whose work and partnership our goals would not be achievable.

VACATION BREAKS

All university-operated housing (including University Place Apartments) are closed during Thanksgiving, winter and spring breaks. During these times, all residents are required to vacate the residence halls. Students are permitted to leave personal belongings in their rooms, but are encouraged to take valuables home.

FACILITIES AND SERVICES

FURNISHINGS

Central heat and air conditioning, cable television hookup, window coverings (in most cases, miniblinds) and carpeted floors are provided at no additional fee. These services are included in the total cost of room and board for the academic year.

INTERNET ACCESS

Students living in the residence halls have the capability of directly connecting to the campus computer network. This allows each student 24-hour unlimited access. Directions for getting connected to the University's computer network can be found on the Student Computing Services page at www.coastal.edu/scs.

LAUNDRY

Laundry facilities are provided free of charge and are available to all students living in the residence halls. Students can go online and see which machines are available and/or track their laundry through each cycle. University Place residents are expected to use the washers and dryers in their apartments.

Campus Living

MAIL SERVICE

Upon arrival at Coastal Carolina University, all students residing in university-operated housing are assigned a mail box in Sands Hall at 107 Founders Drive. This is a full service post office. You are able to purchase stamps and envelopes, send and receive packages, and more. Mail Services is open Monday through Friday from 7:30 a.m. to 5 p.m. and Saturdays from 10 a.m. to 2 p.m. (August-May schedule). All students receiving packages are notified by email and by a mail pick-up slip in their mailboxes. Packages not signed for within 30 days will be returned to sender. For summer hours and other information visit www.coastal.edu/mailservices.

PARKING

Students living in the residence halls may bring and park their cars on campus. Parking permits must be purchased at the Office of Student Accounts or online at www.coastal.edu/safety. Vehicles must be registered at the CCU Department of Public Safety by furnishing the proper information. All students are encouraged to utilize the shuttle service that is provided by the University. Most residents find this service is the best way to get around campus, and as we move towards becoming a more environmentally conscious campus, utilization of public transportation is important.

CODE OF STUDENT CONDUCT

The Code of Student Conduct is administered through the Office of Student Conduct. Students are expected to be responsible for their actions at Coastal Carolina University and are held accountable through the conduct process. Conduct officers in this office and in University Housing serve as administrators of the disciplinary process. The University adheres to sanctions for students found in violation of the alcohol and other drug policies. The Code of Student Conduct serves as a tool to protect the University community from behavior that is detrimental to values stated in the University's mission statement. Anyone with questions may contact the Office of Student Conduct at 843-349-4161.

CINO CARD

The CINO Card is the official ID at Coastal Carolina University. Every student, staff and faculty member is issued a CINO Card. The first CINO Card issued is free. After that, there is a \$20 replacement card fee for lost, stolen and/or damaged cards. Only one CINO Card, per participant, may be valid at any time.

The CINO Card is required to check out books, to use the P.E. Center, to obtain tickets for games and performances, and for class attendance. Also, if you are living in the Ingle and Eaglin residence halls, you will use the card to gain access to buildings. The CINO Card has some additional optional features like meal plans and CINO Cash. CINO Cash is a debit card system. It is used similar to a check card in which money is deducted from an established balance. CINO Cash may be used for on-campus purchases at dining locations and many non-food locations for products and services. CINO Cash can also be used at many off-campus locations. An updated list of on-campus and off-campus CINO Cash locations can be found on the CINO Card website at www.coastal.edu/cinocard.

DINING SERVICES

All freshmen and sophomores living in campus housing are required to select a meal plan, which is included in the room and board fee. There are four locations on the main campus which provide dining services to the entire campus community. Hicks Dining Hall is located between Ingle and Eaglin Halls and serves all-you-care-to-eat buffet-style breakfast, lunch and dinner as well as late night pizza. The CINO Grille, located in the Lib Jackson Student Center, features Quizno's Subs, sushi (made on the premises), BenePizzeria and Pasta, Grille Works (burgers and fries), and a wide variety of Grab'n-Go items. Java City, located in Kimbel Library, is a full-service espresso bar offering a complete line of hot and iced coffee beverages, smoothies, delicious pastries, and a wide selection of Grab'n-Go items. The Ingle Hall convenience store provides all the basics for life on campus plus snacks and soft drinks.

There are four locations off the main campus that provide food service. The UP Café located at University Place, features a grill, deli, hot buffet, and salad bar. The UP Convenience Store offers an array of bottled beverages, snacks and kitchen staples. Quail Creek Snack Bar, located at Quail Creek Golf Club, features burgers, sandwiches, fries, breakfast items, snacks and beverages. The Coastal Science Center Snack Bar offers Grab'n-Go items, hot dogs, nachos, soup and a wide assortment of snacks and hot and cold beverages.

Dining Services

MEAL PLANS FOR RESIDENTIAL STUDENTS

(REQUIRED FOR ALL FRESHMEN & SOPHOMORE RESIDENTIAL STUDENTS)

Students living in campus housing may choose one of the following meal plans:

THE UNLIMITED MEAL PLAN WITH \$50 DECLINING BALANCE

- Unlimited all-you-can-eat meals, which allow you to dine as many times as you like during any given meal period at Hicks Dining Hall or UP Café.
- Meal equivalency can be used at CINO Grille or Quail Creek Snack Bar (up to 19 meal equivalencies per week in lieu of dining at Hicks Dining Hall or UP Café).
- \$50 Dining Dollars to be used at any of our dining locations.

THE BRONZE PLAN WITH \$100 DECLINING BALANCE

- Fifteen (15) all-you-can-eat meals per week at Hicks Dining Hall or UP Café.
- Meal equivalency can be used at CINO Grille or Quail Creek Snack Bar (up to 15 meal equivalencies per week in lieu of dining at Hicks Dining Hall or UP Café).
- \$100 Dining Dollars to be used at any of our dining locations.

THE GREEN PLAN WITH \$175 DECLINING BALANCE

- Ten (10) all-you-can-eat meals per week at Hicks Dining Hall or UP Café.
- Meal equivalency can be used at CINO Grille or Quail Creek Snack Bar (up to 10 meal equivalencies per week in lieu of dining at Hicks Dining Hall or UP Café).
- \$175 Dining Dollars to be used at any of our dining locations.

THE BLUE MEAL PLAN WITH \$225 DINING DOLLARS

- Eight (8) all-you-can-eat meals per week at Hicks Dining Hall or UP Café.
- Meal equivalency can be used at CINO Grille or Quail Creek Snack Bar (up to 8 meal equivalencies per week in lieu of dining at Hicks Dining Hall or UP Café).
- \$225 Dining Dollars to be used at any of our dining locations.

MEAL PLANS FOR COMMUTER STUDENTS

ANY 50 MEALS WITH \$200 DINING DOLLARS

- Fifty (50) all-you-can-eat meals per semester at Hicks Dining Hall or UP Café.
- Meal equivalency can be used at CINO Grille or Quail Creek Snack Bar.
- \$200 Dining Dollars to be used at any of our dining locations.

ANY 50 MEALS

- Fifty (50) all-you-can-eat meals per semester at Hicks Dining Hall or UP Café.
- Meal equivalency can be used at CINO Grille or Quail Creek Snack Bar.

All meal plans offered to residential students are also offered to commuter students.

DINING SERVICES POLICIES

1. All freshman and sophomores living on campus are required to have one of the four meal plans listed, which is included in the room and board fee.
2. The meal plans begin on the first day residence halls open and end on the day after the last day of exams.
3. The dining halls are closed for breaks and holidays when the residence halls are closed.
4. Authorized changes in meal plans are permitted through the third Wednesday after move-in day for both the fall and spring semester. Changes can be made at the Office of Student Accounts.
5. To use any meal plan, you must present your Coastal Identification Card (CINO Card) to the cashier each time you dine at the food facilities. IDs are not transferable and may not be passed, sold or loaned to others. CINO card office hours are Monday through Friday from 9 a.m. to 4:30 p.m.
6. Lost IDs should be reported to the CINO Card office immediately in person or by calling 843-349-6435.
7. All food purchased in the Hicks Dining Hall must be eaten in the dining hall and may not be taken out, with the exception of a piece of fruit or an ice cream cone.

Dining Services

DINING SERVICES LOCATIONS

HICKS DINING HALL

Hicks Dining Hall is located between Ingle and Eaglin residence halls. You will be able to enjoy all-you-can-eat dining at its best. Flame-grilled entrees, freshly baked pizza, an abundant salad bar, vegetarian selections and delicious home-made desserts are offered for your dining pleasure.

Hours of operation:

Monday through Friday:

Breakfast	7 to 10 a.m.	Continental	10 to 11 a.m.
Lunch	11 a.m. to 2:30 p.m.	Lite Lunch	2:30 to 4:45 p.m.
Dinner	4:45 to 8 p.m. (Mon. - Fri.)	Late Night	8 to 11 p.m. (Sun. - Thurs.)

Saturday and Sunday:

Brunch	10:30 a.m. to 2:30 p.m.	Lite Lunch	2:30 to 4:45 p.m.
Dinner	4:45 to 7 p.m.		

UP CAFÉ

UP Café is Coastal Carolina's newest dining facility featuring convenient Grab'n-Go meal plan options. Choose from a grill combo, deli combo, hot buffet options and/or a great salad!

Hours of operation:

Monday - Friday: 7 a.m. to 11 p.m. Saturday & Sunday: 10:30 a.m. to 11 p.m.

Hot Buffet available:

Monday - Friday: Breakfast 7 a.m. to 10 a.m. Lunch 11 a.m. to 2 p.m.
Monday - Thursday: Dinner 5 to 8 p.m.

CINO GRILLE

The CINO Grille is located in the Lib Jackson Student Center. This dining facility features Quizno's Subs, Sushi (made on the premises), BenePizzeria and Pasta, Grille Works burgers, soups, salads and a wide variety of Grab'n-Go items.

Hours of operation:

Monday - Thursday: 7:30 a.m. to 9 p.m. Friday: 7:30 a.m. to 7 p.m.
Saturday: 1 to 5 p.m. Sunday: 6 to 10 p.m.

JAVA CITY

Located in Kimbel Library, Java City offers gourmet coffees, smoothies and a wide variety of Grab'n-Go items. Open Monday through Thursday, 7:30 a.m. to midnight; Friday, 7:30 a.m. to 5 p.m.; Saturday, 12 p.m. to 5 p.m.; and Sunday, 1 p.m. to midnight.

UP CONVENIENCE STORE

Located at University Place, the UP C-Store provides everything you need to stock your in-room fridge, plus tasty snacks and refreshing beverages. Open Monday through Friday, 8 a.m. to 11 p.m. and Saturday and Sunday, 3 p.m. to 11 p.m.

INGLE CONVENIENCE STORE

Located in Ingle Hall, this location provides all the basics for life on campus: snacks, soft drinks, laundry detergents and other essentials. Open Monday through Thursday, 8 a.m. to midnight; Friday, 8 a.m. to 6 p.m.; and Saturday and Sunday, 3 p.m. to 11 p.m.

COASTAL SCIENCE CENTER SNACK BAR

Located at the entrance of the Coastal Science Center, the snack bar offers Grab'n-Go items. Open Monday through Thursday, 7:30 a.m. to 3 p.m. and Friday, 7:30 a.m. to 2 p.m.

QUAIL CREEK SNACK BAR

Located at Quail Creek Golf Club, this location offers burgers, sandwiches, fries and plenty of snacks and beverages. Open Monday through Sunday, 7 a.m. to 6 p.m.

**Hours are subject to change.*

Student Services

OTHER SERVICES

CAREER SERVICES CENTER

The Career Services Center provides career counseling and assessment to assist students in preparing for their post-graduate careers. All University 110 students take the Discover online career assessment, which evaluates each student's interests, abilities and values as they relate to the world of work. Freshmen also attend a Career Services workshop designed to help them correctly interpret their Discover results and participate in class assignments designed to help them identify career goals and make an informed decision concerning a college major. A major part of the college journey includes experiential education that helps students narrow their career choices and gain valuable experience in their chosen fields. Students can participate in job-shadowing and internships, both of which may be arranged through the Career Services Center. Workshops on job search strategies, interviewing skills, resume development and career networking are also offered.

Information concerning on-campus student jobs can be found on the Human Resources website (www.coastal.edu/hreo/workplace/studentjobs). Jobs for students in the local community; full-time position listings in the local community, the southeast region and nationwide; and internship opportunities can be found on the Chants JobLink, located on the Career Services website (www.coastal.edu/career). The Career Services website also contains many features, links and videos for students including information on typical careers particular majors tend to enter and topics such as identifying career goals, selecting an internship, developing a resume and selecting a college major. The website also provides valuable information for parents including tips on enhancing their student's educational experience and information about the Parent's Career Services Network.

The Career Services Center is located in Indigo House at 104 Thomas Trout Drive in the center of the main campus. Hours are 8 a.m. to 5 p.m., Monday through Friday. For an appointment, call 843-349-2341, use the "Contact Us" feature on the website at www.coastal.edu/career or stop by the center.

STUDENT HEALTH SERVICES

Located across the street from Baxley Hall (east side of University Blvd.), Student Health Services offers all Coastal Carolina University students quality primary medical care and health education services, with an emphasis on wellness and healthy lifestyles. You are invited to seek care from our dedicated team of professionals who are available to assess your health care needs. We encourage you to make an appointment for non-emergencies, visit us to pick up health and wellness resources or access our website for many other resources at www.coastal.edu/health. For additional information or to make an appointment, please call 843-349-6543.

COUNSELING SERVICES

Counseling Services assists students in defining and accomplishing their personal and academic goals. Priorities include: 1) treating mental health concerns, 2) preventing psychological difficulties, 3) educating students to live emotionally and behaviorally healthy lives, and 4) contributing to a healthy campus environment. Services include individual, couples and group counseling; psychiatric services; crisis intervention; assessment; nutritional counseling; drug and alcohol education; referrals; and consultation. Counseling Services adheres to standard professional procedure regarding confidentiality of information, and records are not part of any other University records system. Professional staff members and student peer educators from SHORE (Students Helping Others Reach Excellence) also present psycho-educational programming through presentations to classes, clubs, teams, etc., and sponsor prevention efforts such as alcohol awareness week and depression screenings. For appointments or more information, visit the Student Health Counseling Services building at 204 University Blvd., call 843-349-2305, or go to <http://www.coastal.edu/counseling>.

Student Services

OTHER SERVICES

ACCESSIBILITY AND DISABILITY SERVICES

Students with physical, psychological or learning disabilities receive reasonable accommodations and assistance through this service. With appropriate documentation, the Coordinator of Accessibility and Disability Services and the student will determine accommodations needed to assist the student in taking full advantage of his/her Coastal Carolina University educational opportunities. To access services and accommodations, students should obtain documentation of the disability and send to the Coordinator of Accessibility and Disability Services, Coastal Carolina University, P.O. Box 261954, Conway, SC 29528-6054 or fax to 843-349-2718. More information is available at www.coastal.edu/disabilityservices or by calling 843-349-2341.

DEPARTMENT OF PUBLIC SAFETY

The Coastal Carolina University Department of Public Safety provides on-campus service 24 hours per day, seven days per week. The department's major responsibility is the protection of students, faculty, staff and the general public who visit the campus. State laws and University regulations are enforced at all times. For more information, call 843-349-2177 or visit www.coastal.edu/safety.

VEHICLES

All vehicles on campus or at the residence halls must be registered with the Department of Public Safety and must display a valid parking decal. All students, including freshmen, are allowed to have vehicles on campus. Decals may be purchased at the Office of Student Accounts or online at www.coastal.edu/safety. Vehicles not registered or improperly parked on campus are subject to parking tickets, being towed or being immobilized with a "wheel lock."

TRANSPORTATION

Coastal Rapid Public Transit Authority provides public transportation on a regularly scheduled basis throughout the Conway-Myrtle Beach area. A bus stop is located beside Kearns Hall on University Boulevard.

The Student Shuttle also provides free service with stops at University Place, the Edwards College of Humanities and Fine Arts Building, the Lib Jackson Student Center and the Coastal Science Center.

AIRPORT

Myrtle Beach International Airport provides service to the Myrtle Beach region through several major air carriers. The airport code is MYR. Transportation from the airport to the campus is available by taxi service.



Get Involved!

STUDENT ACTIVITIES & CAMPUS RECREATION

Getting involved in campus activities is an essential aspect of a successful University experience. More than 140 clubs and organizations are open to students at Coastal Carolina University including academic, special interest, religious and sport clubs and honor societies. Whether you are interested in community service projects, athletics, Greek life, media or student government, Coastal Carolina University has an organization to fit your needs. Student clubs and organizations are listed on the Web at www.coastal.edu/osal/clubslist.html. Operational procedures and regulations for student organizations can be found in the Student Organization Handbook and on the web at www.coastal.edu/osal/forms.html. Any student interested in forming a new organization should contact the Office of Student Activities and Leadership in the Lib Jackson Student Center, Room 215.

The Department of Campus Recreation offers a host of recreational, fitness, outdoor and competitive sports opportunities to Coastal Carolina University students. Facilities and programs are constantly growing and adapting to meet the campus community's ever-changing recreational needs. The Student Recreation and Convocation Center (SRCC) is a 127,685 square-foot facility equipped with a 30-foot climbing wall, three group exercise studios, an indoor track, and weight training and cardio areas. The SRCC, which will open in early 2012, also holds the outdoor recreation rental center. In the Williams-Brice Recreation Center, there are three basketball courts and a six-lane, 25-yard swimming pool with a zero-depth entry instructional area. Outdoor facilities include a recreation field complex with five fields available for student use and lighted tennis courts.

Programs offered include intramural sports, group exercise, sport clubs, informal recreation, community programs, aquatics and outdoor adventures. Most programs are offered at little or no cost to University students. Everyone is encouraged to take full advantage of these incredible opportunities to improve mental, physical and social well-being. For more information contact the Department of Campus Recreation at 843-349-2802. For full details on any of the above mentioned programs, find us on the web at www.coastal.edu/recreation.

HOMECOMING

Each fall the Homecoming tradition at Coastal Carolina University is highlighted by a week-long schedule of exciting events for students. Some of these events include the annual talent show, the step show, Chant Fest, pep rally, elections for the Homecoming Court, the President's 5K Cup Race, a golf tournament and many more fun activities for students. The Homecoming events culminate when students, alumni and the community attend a Chanticleer football game that includes the presentation of the Homecoming King and Queen.

EXPERIENCE COASTAL CAROLINA UNIVERSITY

Visit our website or schedule a visit to the campus to see for yourself how Coastal Carolina University can put you on the path to success: www.coastal.edu/admissions/visits.html.

To schedule a campus visit, please call 843-349-2026 or 800-277-7000 or register online. We offer daily tours, Saturday tours and Discovery Day programs. Please inform us if you or a family member needs special accommodations during your visit.

Campus Visits

DAILY TOURS

Tours take place Monday through Friday (except holidays), leaving the Rotunda in Baxley Hall at 9:30 a.m. and 2 p.m. (September through April) and 9:30 a.m. only (May through August).

SATURDAY TOURS

In the event that your schedule cannot accommodate a weekday visit or Discovery Day program, tours are offered on select Saturdays. Please note that these programs are offered on a space-available basis; attendance is limited and reservations are required. Check-in is at 9 a.m. and the tour begins at 9:30 a.m. and ends at 11 a.m. An admissions counselor will be available after the tour, but no additional faculty or staff are present.

Fall

September 17, 2011
October 1, 2011
October 29, 2011
November 12, 2011
December 3, 2011

Spring

January 28, 2012
February 18, 2012
March 3, 2012

DISCOVERY DAYS

If you come to a Discovery Day program, you will have the chance to tour the campus, talk with current students, learn about academic programs, and meet other students who are choosing Coastal Carolina University. Admissions and financial aid counselors are available after the program to answer questions. Registration begins at 9 a.m. and the program begins at 9:30 a.m. The program will end at 12:30 p.m.

March 24, 2012
April 14, 2012



ENROLLMENT QUESTIONS

WHEN IS MY ENROLLMENT FEE DUE?

You should pay the \$100 enrollment fee no later than May 1, 2012. We will be glad to accept your fee as soon as you have decided that Coastal Carolina University is for you. We typically receive the first freshman enrollment fee in September.

HOW DO I CHANGE MY MAJOR?

If you need to change your major, please contact the Office of Admissions immediately. You can write, fax a letter to 843-349-6436 or email: admissions@coastal.edu.

WHEN DO I REGISTER FOR CLASSES?

The Freshman Advising Center staff creates course schedules for all new freshmen. New freshmen must take the math and foreign language placement tests on the Internet at least two weeks before attending their Summer Orientation sessions or they may not receive a schedule. New transfer students will meet with their department chairs or another adviser at Orientation and obtain their class schedules.

AM I REQUIRED TO ATTEND ORIENTATION?

All new freshmen and transfers are required to attend Orientation. Sessions provide you with the information you need to make a smooth transition to life at Coastal Carolina University. Orientation is also your chance to make connections with new and returning students.

WHEN WILL I GET A COASTAL EMAIL ACCOUNT?

All new students receive a Coastal Carolina University email account upon payment of the \$100 enrollment fee. A letter will be sent via U.S. Mail to your home address that contains your user name, temporary password and the web address of Coastal Carolina University's account setup page. The first time you log into the system, you will be prompted to create a security question and provide the answer. Enter a question to which only you will know the answer. Once you have successfully set up your security question and answer, you will be prompted to specify your password. In order to keep your account private, do not share your security question, answer or password with anyone. Please check your CCU email regularly as official University communications will be sent to you through this address.

WHAT HAPPENS IF I FORGET MY ACCOUNT PASSWORD?

If you forget your password, you may reset it at www.coastal.edu/search/password. You will be prompted for your Social Security number, birth date and the answer to the security question you provided. Once you have successfully entered this information, you will be presented with a change password page. If you forget both your user name and password, you can receive a new temporary password by visiting the Office of the Registrar with proper photo identification.

HOW DO I GET COLLEGE CREDIT FOR AP CLASSES OR COLLEGE CLASSES?

To receive AP credit, a student must receive at least a 3 on the AP exam. Please have your scores sent to Coastal Carolina University (5837), Office of the Registrar, P.O. Box 261954, Conway, SC 29528-6054. If you have taken college courses, contact the school you attended and request that an official transcript be sent to the Coastal Carolina University, Office of Admissions, P.O. Box 261954, Conway, SC 29528-6054.

To receive IB credit, a student must receive at least a 4 on the higher-level exam. Please have your scores sent to Coastal Carolina University, Office of the Registrar, P.O. Box 261954, Conway, SC 29528-6054.

MAY I PURCHASE HEALTH INSURANCE THROUGH THE UNIVERSITY?

For students who do not have health insurance, it is available for a very reasonable cost through Pearce & Pearce Inc., underwritten by Mutual of Omaha Insurance Company. Students may obtain the insurance brochure at Student Health Services, visit the Pearce & Pearce website at www.studentinsurance.com, or call toll free 888-722-1668.

Frequently Asked Questions

FAQ

WHEN DO I HAVE TO TURN IN MY IMMUNIZATION FORM?

Every student entering a South Carolina college or university is required to provide an immunization record. All students attending Coastal Carolina University are required to meet University immunization requirements prior to registration; a copy of your immunization record must be provided to Student Health Services prior to your enrollment. If you have any questions regarding immunization requirements, please call Student Health Services at 843-349-6543 or fax your immunization records to 843-349-6546. More information about immunization requirements can be found at www.coastal.edu/health/i_requirements.html. For fall enrollment, completed forms are due by August 1. For spring enrollment, completed forms are due by December 15.

ARE COMPUTERS REQUIRED FOR ANY MAJORS?

All students enrolling in Computer Science 130, 140 and 150 are required to have their own notebook computers. It is recommended that graphic design majors acquire a MacBook or MacBook Pro.

UNIVERSITY HOUSING QUESTIONS

WHEN IS MY HOUSING APPLICATION (AND THE ASSOCIATED FEES) DUE?

As soon as possible! All housing assignments are made on a first-come, first-served basis based on the date your housing application is received, so the best way to get a preference is to apply early. The priority deadline for completing the housing application for first-year students is June 1.

MAY I REQUEST A SPECIFIC ROOMMATE?

Students may request specific roommates, and requests will be honored as much as possible; however, requests must be mutual, and there is no guarantee a request will be honored.

WHEN DO I RECEIVE MY HOUSING ASSIGNMENT?

Housing assignments will be made available online during the summer prior to your arrival on campus. Students are encouraged to call their roommates and get to know them before they move in together. Students also find this is a good time to make any arrangements as to what each of them will bring and what they might be able to share.

WHEN CAN I MOVE INTO MY ROOM?

First-year students move into their rooms a few days before classes begin in order to participate in Welcome Week programming designed to connect them to the Coastal Carolina University community. Specific move-in dates and times can be found at www.coastal.edu/housing.

CAN FRESHMEN HAVE CARS ON CAMPUS?

Yes, we allow freshmen to have cars on campus. To obtain your parking decal, visit the Office of Student Accounts or purchase online at www.coastal.edu/safety.

ARE THERE COMPUTER HOOKUPS IN THE RESIDENCE HALLS?

Yes, Internet access is available to all students living on campus via our computer network. Depending on the residence hall in which you live, you may or may not have wireless access immediately available. Instructions for getting connected to the University's computer network can be found on the student technology page at www.coastal.edu/scs.

WHAT IS THE COST OF THE FOUR MEAL PLANS?

Coastal Carolina University has four meal plans to choose from: Bronze, Green, Unlimited, and Blue. Each meal plan has a specific number of meals per week associated with it and offers the student a declining balance of dining dollars for use at eateries around campus. The current plan prices can be found at www.coastal.edu/aramark.

FINANCIAL AID QUESTIONS

WHAT DO I DO IF I HAVEN'T HEARD ANYTHING ABOUT FINANCIAL AID?

Contact the FAS office immediately at 843-349-2313 and ask about the status of your award. Students can access their financial aid awards on Student WebAdvisor at webadvisor.coastal.edu.

WHEN IS PAYMENT DUE?

For payment deadlines, visit the Student Accounts website at www.coastal.edu/studentaccounts.

WHAT HAPPENS IF MY FINANCIAL AID WILL NOT BE AVAILABLE BY THE TIME BILLS ARE DUE?

Payment deadlines are available on the Student Accounts website at www.coastal.edu/studentaccounts.

If you have not applied for financial aid or your payment is due, you must pay the charges for the semester from personal funds. If you are awarded financial aid at a later date, you will receive a refund check, if applicable.



Directory

COASTAL CAROLINA UNIVERSITY DIRECTORY

If you have questions about your enrollment at Coastal Carolina University, please consult the following directory and contact the appropriate office for assistance.

AREA CODE: 843

University Operator (for any number not listed).....	347-3161
Accessibility and Disability Services.....	349-2341
Admissions.....	349-2170
Academic/Advising.....	349-2934
Athletics.....	349-2820
Bookstore.....	349-2360
Campus Tours.....	349-2026
Career Services.....	349-2341
Counseling Services.....	349-2305
Dean of Students.....	349-2302
Dining Services.....	349-2255
Financial Aid.....	349-2313
Health Services.....	349-6543
Honors Program.....	349-2267
International Student Programs and Services.....	349-2684
Mail and Postal Services.....	349-2156
Multicultural Student Services.....	349-2863
Orientation.....	349-2027
Public Safety.....	349-2177
Registrar.....	349-2019
Residency for Tuition Purposes (new students).....	349-2151
Scholarship Office.....	349-2308
Student Accounts.....	349-2245
Student Activities.....	349-2301
Student Employment.....	349-2358
University Housing.....	349-6400
Veteran Affairs.....	349-2464



800-277-7000
www.coastal.edu

admissions@coastal.edu (admissions information)
finaid@coastal.edu (financial aid information)
housing@coastal.edu (university housing information)
scholar@coastal.edu (scholarship information)

Note: Information in this publication is subject to change without notification.

COASTAL CAROLINA UNIVERSITY

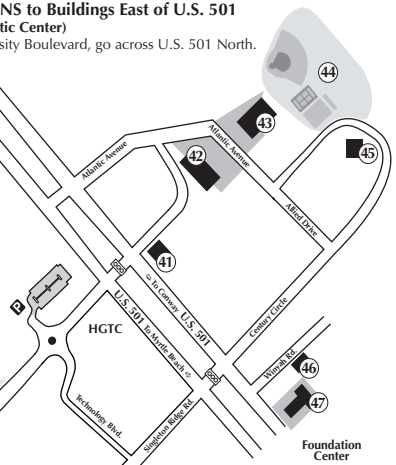
P.O. Box 261954 • Conway, South Carolina 29528-6054 • 843-347-3161 • www.coastal.edu

- | | | |
|---|--|--|
| <ul style="list-style-type: none"> 1 Bill Baxley Hall
(Rotunda - Welcome Center / Bookstore) 2 Kingston Hall (Admissions / Financial Aid) 3 Evergreen (Office of Student Accounts) 4 Lib Jackson Student Center / CINO Grille 5 Spadoni Park / Graham Family Bell Tower 6 Wheelwright Auditorium 7 Kimbel Library 8 R. Cathcart Smith Science Center 9 Eldred E. Prince Building / University College 10 Edward M. Singleton Building 11 Spadoni College of Education / Kearns Hall 12 Athenum Hall (Public Safety / Alumni Relations / Office for Philanthropy) 13 Indigo House (Career Services Center) 14 Laurel Hall (Photography) 15 Thomas W. and Robin W. Edwards College of Humanities and Fine Arts 16 E. Craig Wall Sr. College of Business Administration 17 The Woods Residence Halls <ul style="list-style-type: none"> 17A. Oak 17B. Cypress 17C. Maple 17D. Dogwood 17E. Elm 17F. Palmetto | <ul style="list-style-type: none"> 18 Ronald R. Ingle Hall
(University Housing) 19 Fred W. Hicks Dining Hall 20 Ronald G. Eaglin Hall
(University Housing) 21 Student Recreation and Convocation Center 22 Sands Hall
(U.S. Post Office / Credit Union) 23 Facilities Planning and Management Complex <ul style="list-style-type: none"> 23A. Facilities Administration / Transportation / Projects and Planning 24 Track and Field Facility 25 Arcadia Hall (Athletic Administration) 26 Hampton Hall (Video / Media Services) 27 Kimbel Arena 28 Williams-Brice Recreation Center 29 Baseball / Softball Hitting Facility 30 Joseph W. Holliday Tennis Practice Courts 31 Charles L. Watson Baseball Stadium / Vrooman Field 32 Softball Field 33 Billy Nichols Tennis Center 34 Athletic Practice Fields | <ul style="list-style-type: none"> 35 Adkins Fieldhouse 36 Brooks Stadium / Benton Field 37 Soccer Field 38 The Gardens Residence Halls <ul style="list-style-type: none"> 38A. Azalea 38B. Magnolia 39 Lackey Chapel 40 Student Health Center 41 Human Resources and Equal Opportunity / Payroll 42 Burroughs & Chapin Center for Marine and Wetland Studies 43 Coastal Science Center
(Printing Services) 44 Intramural Fields 45 Atlantic Hall
(Procurement / Shipping and Receiving) 46 University Band Hall 47 Foundation Center / Community Partnerships 48 Quail Creek Golf Club at Coastal Carolina University 49 University Place |
|---|--|--|

CAMPUS MAP

DIRECTIONS to Buildings East of U.S. 501 (in the Atlantic Center)

From University Boulevard, go across U.S. 501 North.



DIRECTIONS to the FOUNDATION CENTER

From University Boulevard on the main campus, turn right onto U.S. 501. Go 0.6 miles (.96 km) to the first traffic light (in front of Lowe's) and turn left onto Century Circle. Cross the railroad tracks and take the first right on Whistle Stop Road; go one block to Winyah Road and turn right to cross the railroad tracks again. The Foundation Center and the University Band Hall are located on the left.

DIRECTIONS to UNIVERSITY PLACE

From University Boulevard on the main campus, turn left onto S.C. 544. Go 0.25 miles (.4 km) to the first traffic light and turn right.

